



Updated Announcement 16 December 2024

Artemis Resources Ltd (**ASX/AIM:ARV**) ('**ARV**' or '**the Company**') refers to the announcement dated 16 December 2024 titled '**Corporate Presentation December 2024**' (Announcement).

The Company advises that the attached updated Announcement contains further information on slide 13 regarding sample ID details and also includes a cautionary statement relating to the same sample.

This announcement was approved for release by the Executive Director.

For further information contact Mr George Ventouras / Executive Director
info@artemisresources.com.au



Artemis Resources Ltd
Level 2, 10 Ord Street West Perth WA 6005
P O Box 86 West Perth WA 6872
www.artemisresources.com.au



Exploring for Gold in a Tier 1 Jurisdiction Western Australia

Corporate Presentation December 2024

ASX:ARV | AIM:ARV

DISCLAIMER

This presentation (the “Presentation”) has been prepared by Artemis Resources Limited (“ARV” or the “Company”). This Presentation contains general and background information about ARV’s activities current as at the date of the Presentation, and (i) does not purport to be completed; and (ii) should not be considered to be comprehensive or to comprise all the information that an investor should consider when making an investment decision. The information is provided in summary form, has not been independently verified, and should not be considered to be comprehensive or complete. The Company is not responsible for providing updated information and assumes no responsibility to do so. The contents of this Presentation have not been reviewed, authorised or otherwise approved by the UK Financial Conduct Authority (“FCA”), the Australian Securities and Investments Commission (“ASIC”), the Australian Securities Exchange (“ASX”) or any other regulatory body. Reliance on this Presentation for the purpose of engaging in any investment activity may expose an individual to a significant risk of losing all of the property or other assets invested. If you are in doubt about the content of this Presentation and/or any action you should take, you are strongly recommended to seek your own independent financial advice immediately from your stockbroker, lawyer, accountant or other independent financial adviser authorised by the FCA, ASIC or the ASX (as applicable). This Presentation contains both historical facts and statements relating to the Company’s current plans, estimates, objectives, and strategies which are forward-looking statements. Such forward-looking statements involve known and unknown risks, uncertainties and other important factors beyond the Company’s control that could cause the actual results, performance, or achievements of the Company to be materially different from future results, performance or achievements expressed or implied by such forward-looking statements. Accordingly, any reliance you place on such forward-looking statements will be at your sole risk and the Company expressly disclaims any obligation or undertaking to disseminate any updates or revisions to any forward-looking statements contained in this Presentation to reflect any changes in its expectations with regard thereto or any change in events, conditions or circumstances on which any statement is based. The information contained in this Presentation is subject to change without notice. No representation or warranty, express or implied, is given as to the accuracy, completeness or fairness of the information or opinions contained in this Presentation and no liability is accepted by the Company or any of its directors, members, officers, employees, agents, or advisers for any such information or opinions. The Company’s nominated adviser and broker in the United Kingdom, WH Ireland Limited (“WH Ireland”), who is regulated by the Financial Conduct Authority, advise the Company and no one else (whether or not a recipient of these slides) in relation to the Company and will not be responsible to anyone, other than the Company, for providing the protections afforded to customers of the Brokers respectively nor for providing advice in relation to the Company. WH Ireland has not authorised the contents of these slides or any of them. This Presentation is for distribution in or from the UK only to persons authorised or exempted within the meaning of those expressions under FSMA 2000 or any order made under it or to those persons to whom these slides may be lawfully distributed pursuant to the Financial Services and Markets Act 2000 (Financial Promotion) Order 2005 (“Financial Promotion Order”) as amended, including Investment Professionals as defined in article 19(5) and high net worth entities as defined in article 49(2) of the Financial Promotion Order. Additionally, this Presentation is also for distribution in or from Australia only to persons to whom an offer of securities may be made without a disclosure document (as defined in the Australian Corporations Act 2001 (Cth) (“Corporations Act”) on the basis that such persons are exempt from the disclosure requirements of Part 6D.2 in accordance with Section 708(8) or 708(11) of the Corporations Act. Persons who do not fall within any of these definitions should not rely on these slides nor take any action upon them. This Presentation and the information contained in it do not constitute a prospectus or disclosure document and does not form any part of an offer of, or invitation to apply for, securities. Neither this Presentation, nor any part of it, nor the fact of its use, should form the basis of, or be relied on in connection with, any contract or commitment or investment decision.

Some or all of the information contained in these slides and the Presentation (and any other information which may be provided) may be inside information relating to the securities of the Company within the meaning of the Criminal Justice Act 1993 and the Market Abuse Regulation (EU/596/2014) as it forms part of UK law by virtue of the European Union (Withdrawal) Act 2018, as amended (MAR). Recipients of this information shall not disclose any of this information to another person or use this information or any other information to deal, or to recommend or induce another person to deal in the securities of the Company on any exchange (or attempt to do so). Recipients of this information shall ensure that they comply or any person to whom they disclose any of this information complies with this paragraph and also with MAR. The term “deal” is to be construed in accordance with the Criminal Justice Act 1993 and with MAR. This Presentation does not constitute an offer to sell, or a solicitation to buy securities in any jurisdiction in which such offer or solicitation is unlawful. In particular, this Presentation is not, subject to certain exceptions, for distribution in or into the United States, Canada, the Republic of South Africa, the Republic of Ireland or Japan. The Company’s shares have not been and will not be registered under the United States Securities Act of 1933, as amended, nor under the securities legislation of any state of the United States or any province or territory of Canada, the Republic of South Africa, the Republic of Ireland or Japan or in any country, territory or possession where to do so may contravene local securities laws or regulations. Accordingly, ARV’s shares are not, subject to certain exceptions, to be offered or sold directly or indirectly in or into the United States, Canada, the Republic of South Africa, the Republic of Ireland or Japan or to any national, citizen or resident of the United States, Canada, the Republic of South Africa or Japan.

The information in this report that relates to Exploration Results was prepared/compiled by Mr Adrian Hell BSc (Hons), a Competent Person who is a member of the Australasian Institute of Mining and Metallurgy (MAusIMM). Mr Hell is a technical consultant to Artemis Resources Ltd. Mr Hell has sufficient experience that is relevant to the style of mineralisation and type of deposit under consideration and to the activity being undertaken to qualify as a Competent Person as defined in the 2012 Edition of the ‘Australasian Code for Reporting of Exploration Results, Mineral Resources and Ore Reserves’. Mr Hell consents to the inclusion in this report of the matters based on his information in the form and context in which it appears.

The information in this report that relates to Mineral Resources complies with the 2012 Edition of the Australasian Code for Reporting of Exploration Results, Mineral Resources and Ore Reserves (“The JORC Code”) and has been compiled and assessed under the supervision of Ms Janice Graham MAusIMM (CPGeo) MAIG and Dr Simon Dominy FAusIMM(CPGeo) FAIG(RPGeo) FGS(CGEOl). Ms Graham is an employee of Snowden Optiro. Dr Dominy is a consultant to Artemis Resources Ltd. Ms Graham and Dr Dominy have sufficient experience relevant to the styles of mineralisation and type of deposits under consideration and to the activity being undertaken to individually qualify as a Competent Person as defined in The JORC Code. Ms Graham and Dr Dominy consent to the inclusion in the report of the matters based on this information in the form and context in which it appears.

To the extent that this announcement contains references to prior exploration results and Mineral Resource Estimates for the Carlow Gold/Copper Project which have been cross referenced to previous market announcements made by the Company, unless explicitly stated, no new information is contained. The Company confirms that it is not aware of any new information or data that materially affects the information included in the relevant market announcements and, in the case of estimates of Mineral Resources, that all material assumptions and technical parameters underpinning the estimates in the relevant market announcements continue to apply and have not materially changed.

Artemis Resources acknowledges and pays respect to the Traditional Owner groups upon whose lands we operate.

We recognise the unique cultural heritage of Aboriginal people and their continued connection to lands, waters and communities.

We pay our respects to all Aboriginal people, and to Elders past, present and emerging.

COMPANY SNAPSHOT

ASX:ARV | AIM:ARV

MARKET CAP

A~\$18m*

ISSUED SHARES

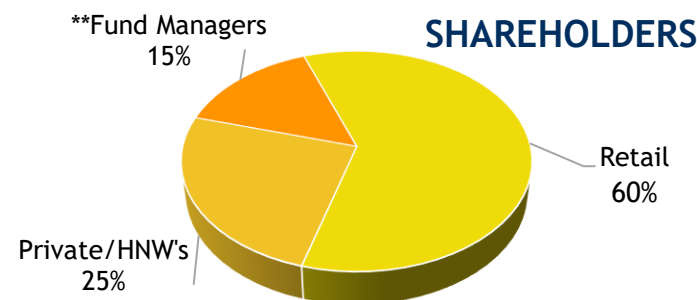
~2,488m*

SHARE PRICE

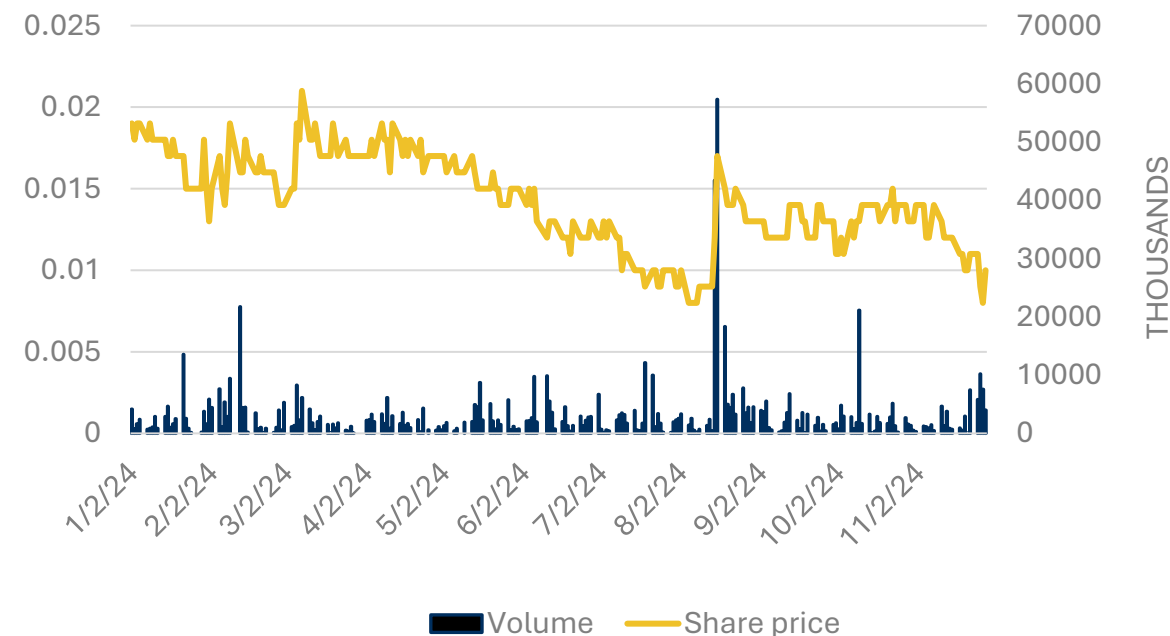
A\$0.007*

INVESTMENTS

ASX:GRE - 6.75m shares (8.12%)



*Subject to current placement,
assumes price of \$0.007
**Jupiter Asset Management ~8%



BOARD OF DIRECTORS



- Guy Robertson - Non Exec Chairman. 30 years of experience as a Director, CFO and Company Secretary.



- George Ventouras - Executive Director. More than 30 years of business, marketing & Corporate experience



- Vivienne Powe. - Non-Exec Director. Metallurgical engineer with over 30 years industry experience.



- Liz Henson - Non Exec Director. International lawyer with over 35 years of global experience.



- Julian Hanna - Technical Director elect - Geologist with more than 40 years' experience

NEW MANAGEMENT AND TECHNICAL TEAM

Experienced team boosted with high calibre mining experts with track record of discoveries and successful exits (+\$1b value)



➤ **George Ventouras - Executive Director**

Over 30 years of business, marketing & corporate management

General Manager Corporate at Apollo Consolidated gold company acquired by Ramelius Resources for ~\$180m

Director experience on multiple ASX listed companies.



➤ **Julian Hanna - Technical Director Elect**

Geologist with more than 40 years' experience in gold, base metals and nickel exploration, project development and mining including a number of major discoveries in WA and Africa.

Co-founder and MD of Western Areas for 12 years (IGO acquired Western Areas for >\$1b). Western Areas became one of Australia's largest UG nickel miners, awarded Digger of the Year 2008, Diggers and Dealers.

MD of MOD Resources for 7 years exploring Kalahari Copper Belt in Botswana with two major discoveries (Sandfire acquired MOD for \$167m in 2019). Director, Growth & External Affairs at Sandfire 2020-2022.



➤ **Ian O'Grady - Senior Technical Advisor**

Exploration geologist with >40 years' experience in the base and precious metal exploration and resource development. Senior exploration managerial positions in Sandfire Resources, St Barbara Mining & Sons of Gwalia. Responsible for all resource development and geological feasibility studies on the De Grussa and Monty Cu-Au VMS deposits for Sandfire. Directed geological due diligence for the acquisition of the Spanish MATSA VMS operations for Sandfire.



➤ **Grant Boxer- Senior Technical Advisor**

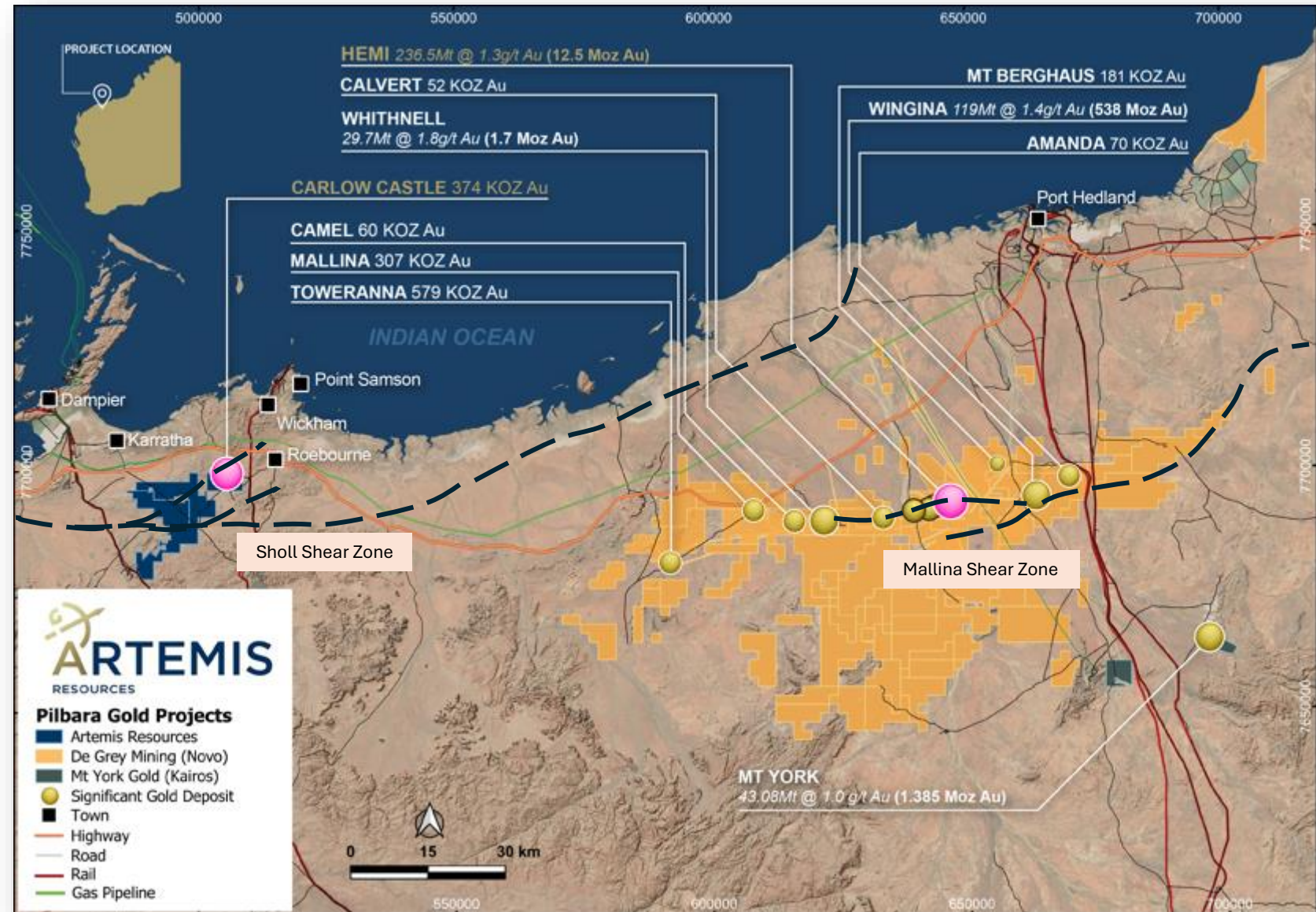
Senior geologist with over 40 years' experience in exploration and mining geology with CRA Exploration, Argyle Diamonds, Rio Tinto Exploration undertaking exploration and evaluation activities for diamonds and other commodities in Australia and overseas. Also worked with Ausquest, Conquest Mining, Zambesi Resources and Chalice Gold.



NORTH PILBARA - AN EMERGING GOLD PROVINCE

KARRATHA GOLD PROJECT

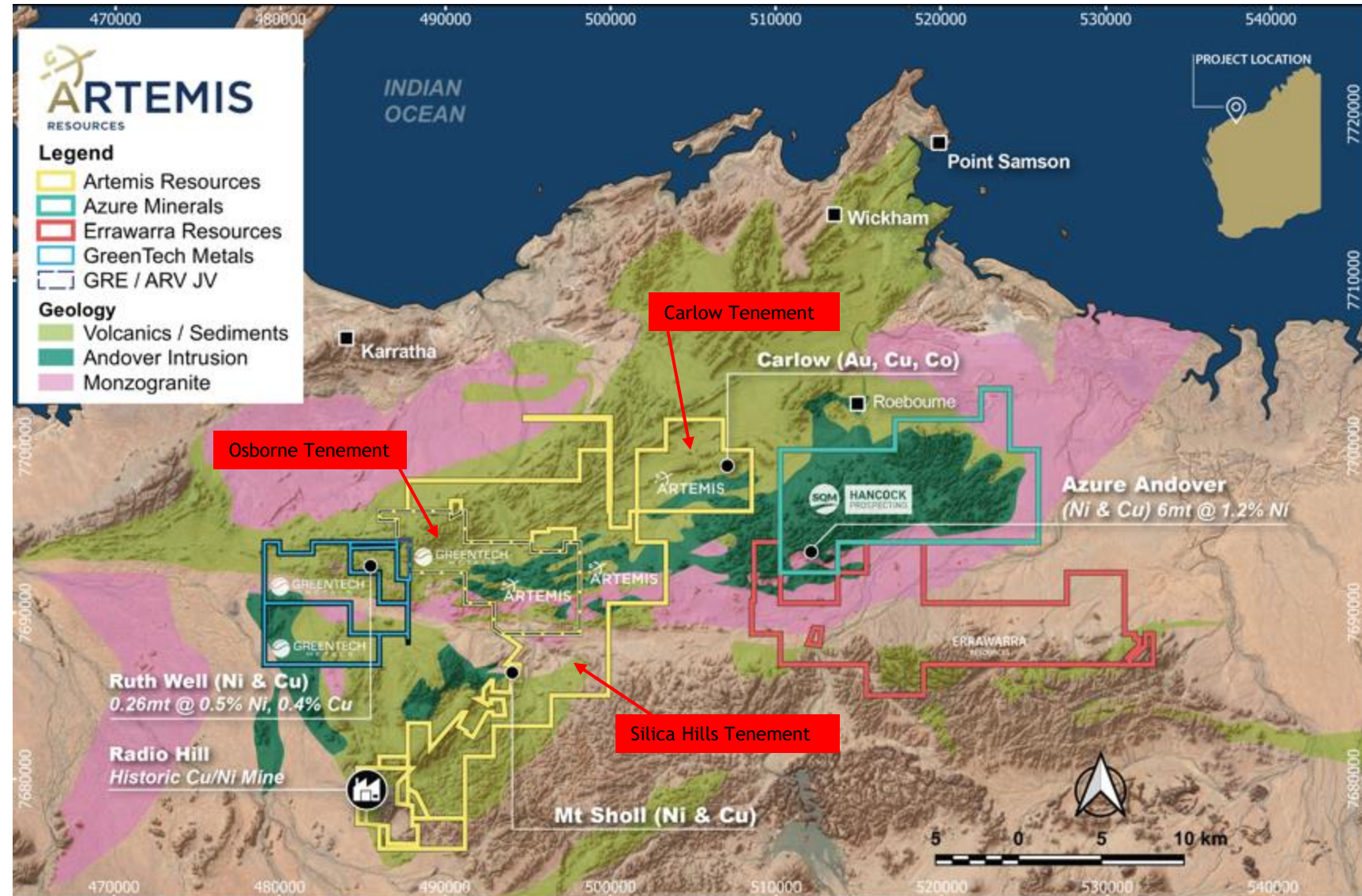
- ~20moz gold discovered to date across northern Pilbara
- Numerous gold occurrences across northern Pilbara region
- Significant gold/copper resources plus satellite targets, big regional upside
- Artemis has dominant position along 20km mineralised structural corridor
- Structural corridor includes thrusts, shear zones, folds and intrusions
- Major structures + major disruptions = drivers of gold mineralisation



KARRATHA GOLD PROJECT - 100% OWNED

TENEMENT WIDE POTENTIAL - >200km²

- Dominant landholding in an emerging Tier 1 commodity hub.
- Close to Karratha - a logistics / administrative centre and Dampier port - only 2 hours flight from Perth.
- Existing mineral resource 374Koz Au* - open pit potential plus high grade open at depth.
- Radio Hill processing plant with tailings dams, water and power. Fully permitted and licensed
- Experienced technical team - exploration, resource growth, feasibility studies, mining.
- Using industry-best exploration techniques with structural focus.

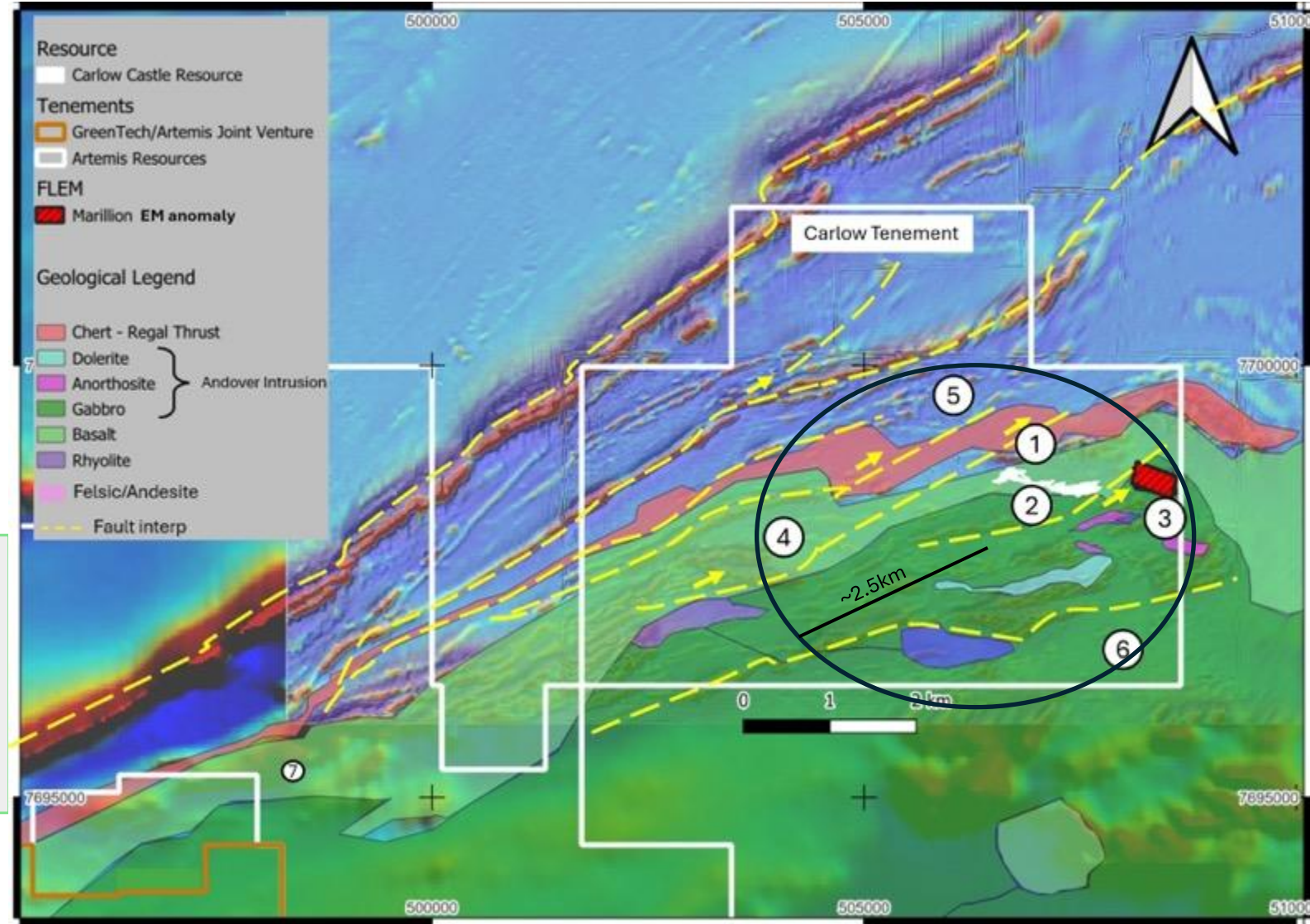


PRIORITY TARGETS

UNIQUE STRUCTURAL SETTING PROSPECTIVE FOR GOLD, SILVER AND COPPER

- Wide, highly prospective, underexplored structural corridor (up to 6km wide) centered around Regal Thrust
- Disruption of corridor with major structures interpreted along north margin of Andover Intrusion
- Multiple surface gold occurrences within quartz/Fe veins with related alteration along structural corridor
- Priority targets:

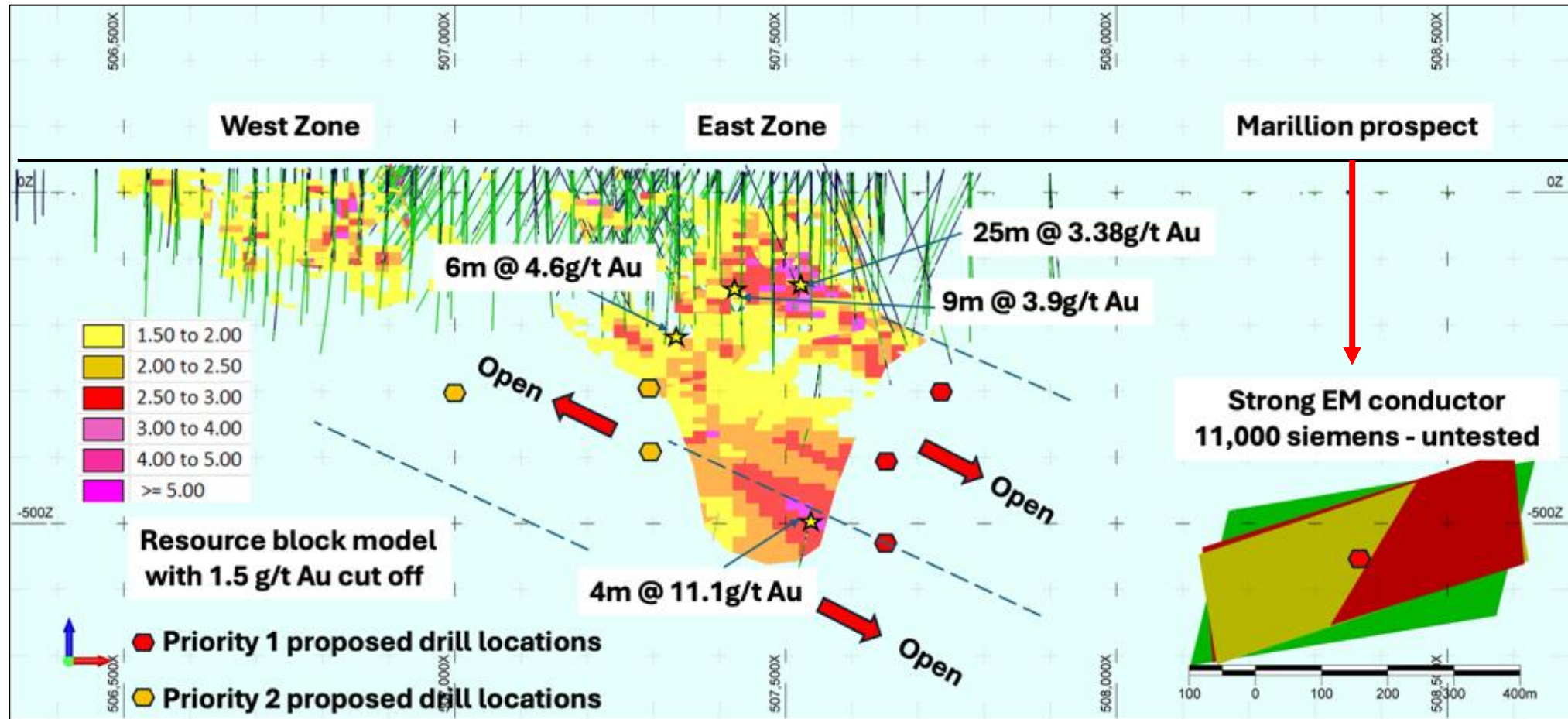
1. Carlow pit – review potential development options
2. Carlow deeps – drill test high grade Au extensions
3. Marillion – drill large highly conductive EM anomaly
4. Europa – drill 2.5km geophysical/structural target
5. Titan – drill test source of surface gold/silver veins
6. Thorpe – follow up high grade Au/Cu sampling
7. Sing Six – drill test source of gold veins at surface



1,2 & 3) CARLOW & MARILLION TARGETS - proposed drilling

EXISTING MINERAL RESOURCE WITH SIGNIFICANT GROWTH POTENTIAL

Total Inferred Mineral Resource of 8.74Mt consisting of: Gold 374,000oz @ 1.3 g/t - Copper 64,000t @ 0.73 - Cobalt 8,000t @ 0.09%

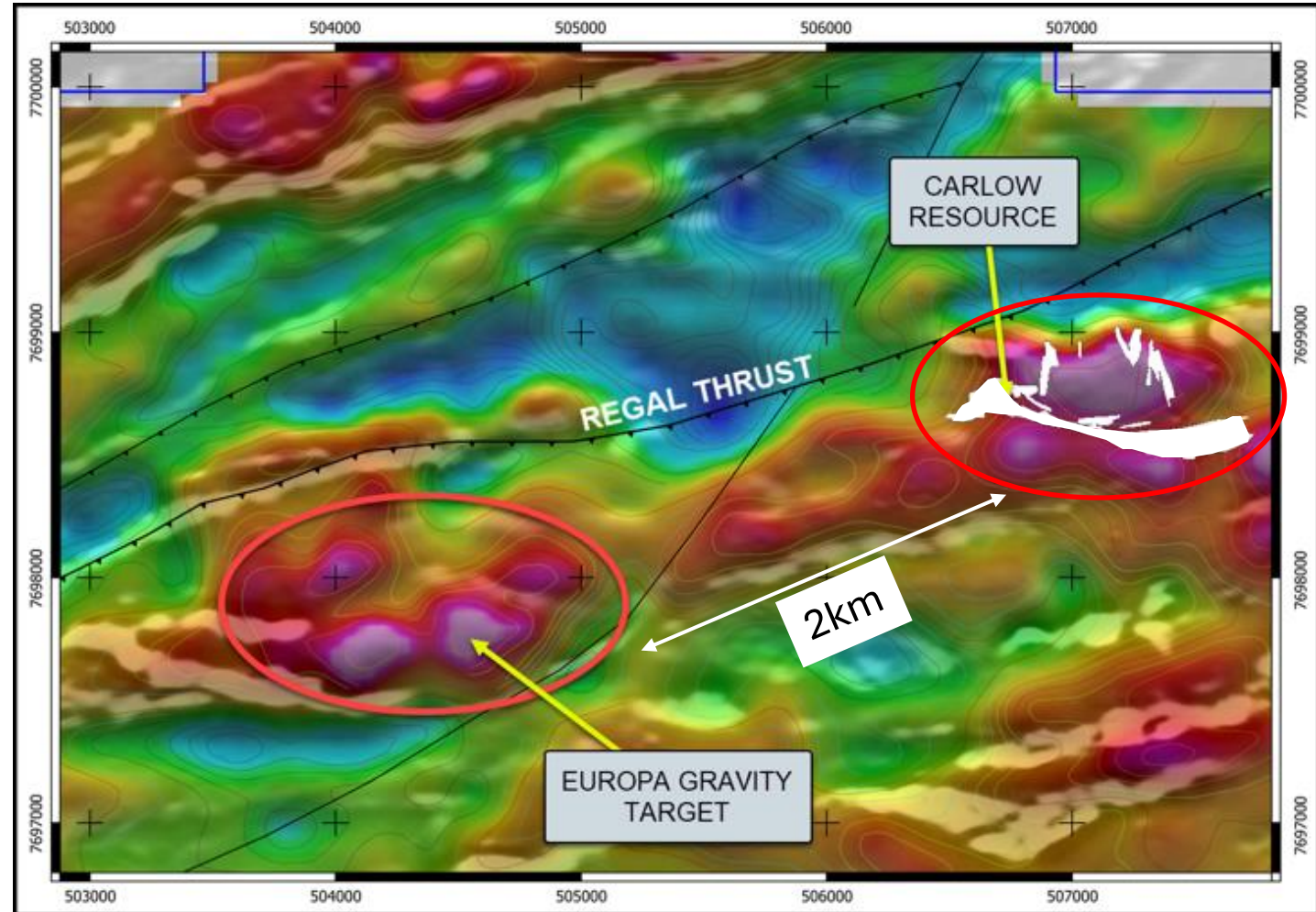


4) EUROPA TARGET - 2km W of Carlow Castle Resource

KARRATHA GOLD PROJECT

Similar structural setting and geophysical signature to Carlow

- Europa approximately 2km west and along strike from Carlow Au-Cu-Co deposit
- 2km long gravity anomaly on south side of Regal Thrust within prospective sequence
- Structural setting and gravity signature interpreted to be similar to Carlow, may represent potential buried mineral system
- Europa anomaly mostly below calcrete and shallow transported cover, likely to mask any geochemical response at surface
- Anomalous copper (>100ppm) in soil samples on northern margin of Europa gravity anomaly where outcrop exposed
- EM anomaly identified along northern margin of Europa - detailed mapping underway and additional sampling planned before drilling

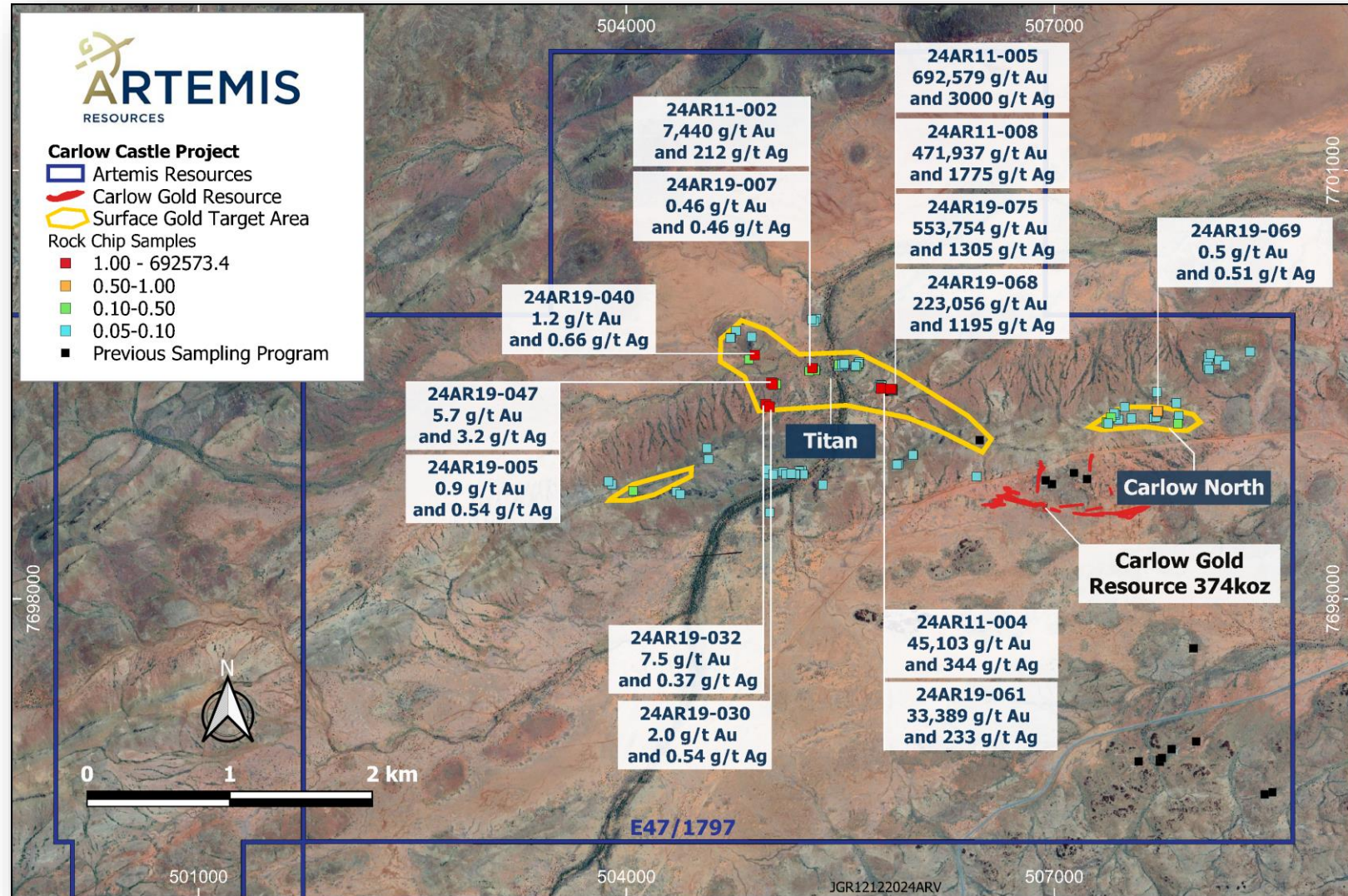


5) TITAN GOLD TARGET - 2km NW of Carlow Castle Resource

KARRATHA GOLD PROJECT

Potential for Multiple Vein Gold System

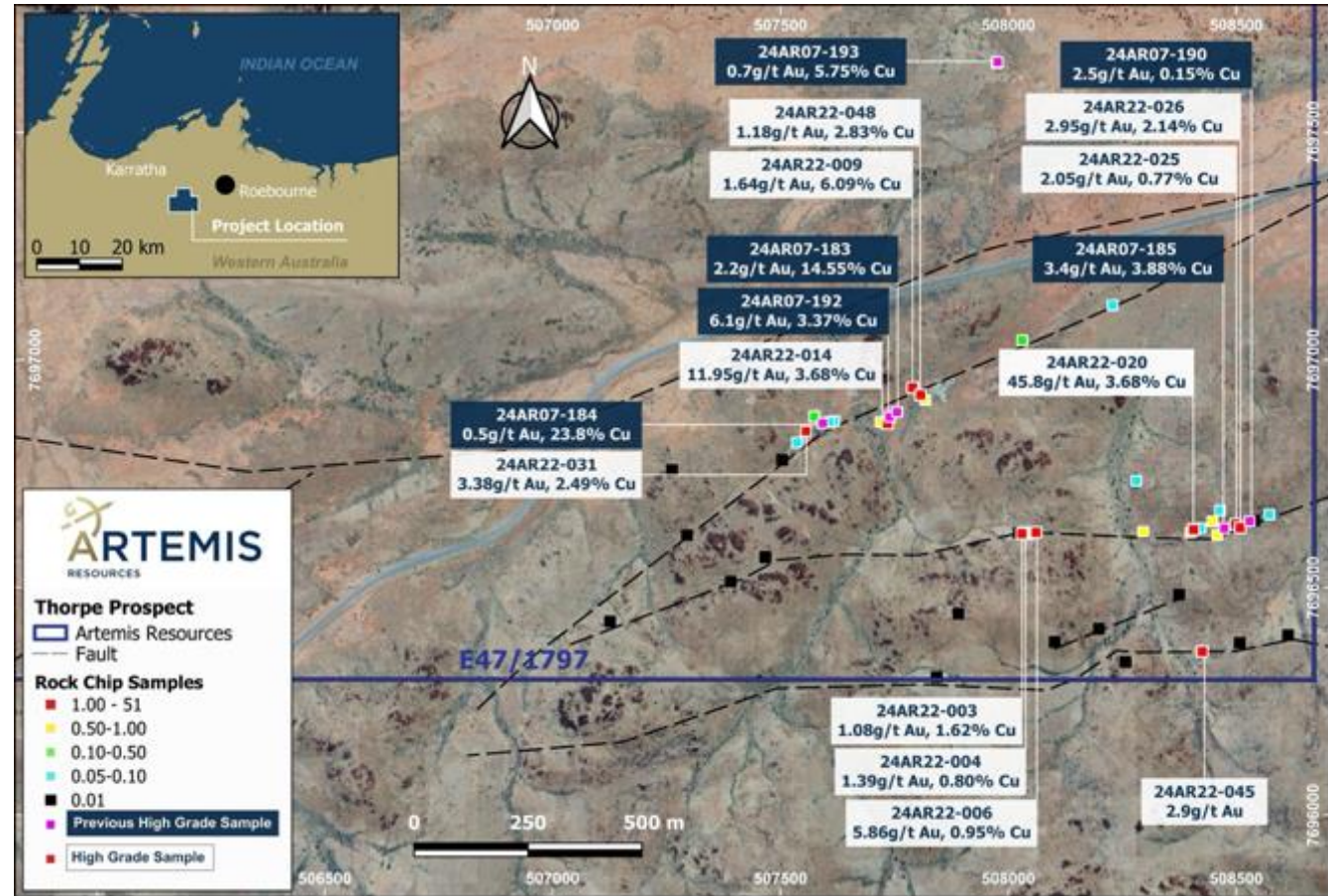
- Multiple surface gold/silver occurrences in quartz/ironstone veins at surface
- High grade samples extend in NW zone
- 10.4oz gold bar produced from ~300kg surface material
- Tracked for ~700m and remains open
- **High-Grade** rock chip assay results include:
 - 692,579g/t Au & 3,000g/t Ag (24AR11-005)
 - 553,754g/t Au & 1,305g/t Ag (24AR19-075)
 - 471,937g/t Au & 1,775g/t Ag (24AR11-008)
 - 223,056g/t Au & 1,195g/t Ag (24AR19-068)
 - 45,103g/t Au & 344g/t Ag (24AR11-004)
 - 33,389g/t Au & 233g/t Ag (24AR19-061)
 - 7,440g/t Au & 212g/t Ag (24AR11-002)



6) CHAPMAN / THORPE TARGET - SE of Carlow Castle

KARRATHA GOLD PROJECT

- Rock chip samples at Thorpe have defined extent of outcropping gold bearing veins, 2-3km south of Carlow.
- 52 samples sent to the laboratory for assaying for gold and other elements. Results included:
 - 45.8 g/t Au, 3.7% Cu & 38.6 g/t Ag (24AR22-020)
 - 12 g/t Au, 1.1% Cu & 3.7 g/t Ag (24AR22-014)
 - 5.9 g/t Au, 1.0% Cu & 17.8 g/t Ag (24AR22-006)
- Assay results from veins sampled along interpreted structures, each trending NE-SW and E-W for ~2km.
- High-grade gold/copper zones defined along two of these structures over approximately 500m length.
- Mineralisation associated with stockwork quartz-iron oxide veining within shear and fault structures with veins ranging in width from centimetres up to ~12m.
- Initial sampling program returned high grade results:
 - 6.1 g/t Au and 3.37% Cu (24AR07-192)
 - 3.4 g/t Au and 3.88% Cu (24AR07-185)



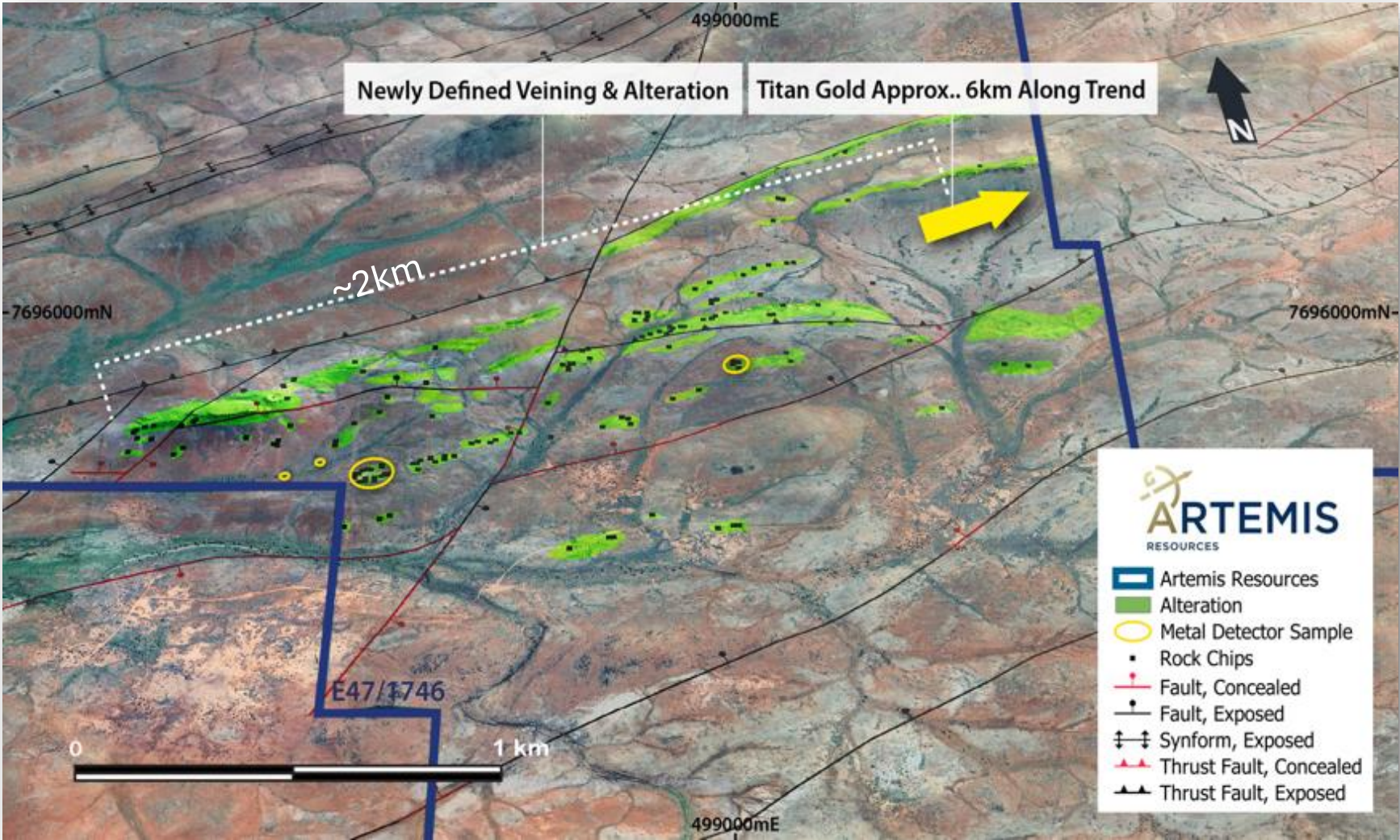
7) SING SIX - SING WELL TARGET

KARRATHA GOLD PROJECT

- Field mapping and rock chip sampling completed at Sing Six & Sing Well Prospects
- Visible gold identified in outcropping quartz/Fe veins
- Multiple vein zones identified across 2km long NE-SW trend
- Sing Six/Sing Well ~6km along trend from Titan gold target



Visible gold in iron oxide vein located at Sing Six prospect



Sample ID	Location		Weight gm	Visual Gold Estimate (%)	Vein Type (major minerals)
	mN	mE			
24AR26-206	7695292	498044	38	2	Iron oxide-quartz

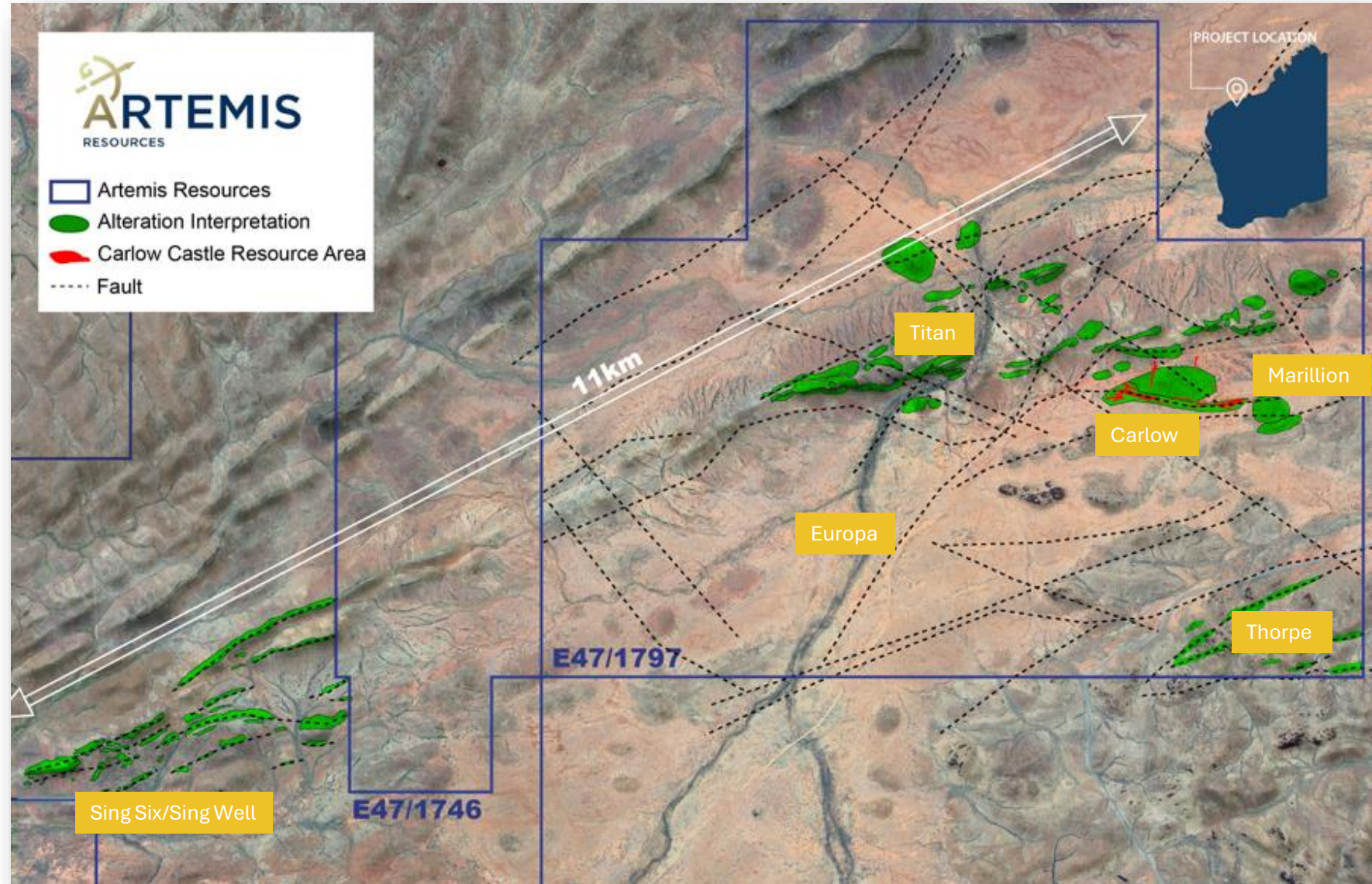
Cautionary statement: Visual estimates of mineral abundance should never be considered a proxy or substitute for laboratory analyses where concentrations or grades are the factor of principal economic interest. Visual estimates also potentially provide no information regarding impurities or deleterious physical properties Cautionary statement: Visual estimates of mineral abundance should never be considered a proxy or substitute for laboratory analyses where concentrations or grades are the factor of principal economic interest. Visual estimates also potentially provide no information regarding impurities or deleterious physical properties relevant to valuations. A number of vein rock chip samples were selected based on presence of visible gold during the sampling programs.

Refer to ASX Announcement dated 4 April 2023.
Refer to ASX Announcement dated 6 December 2021
Refer to ASX Announcement dated 17 October 2024

ALTERATION INTERPRETED TO EXTEND >11km

KARRATHA GOLD PROJECT

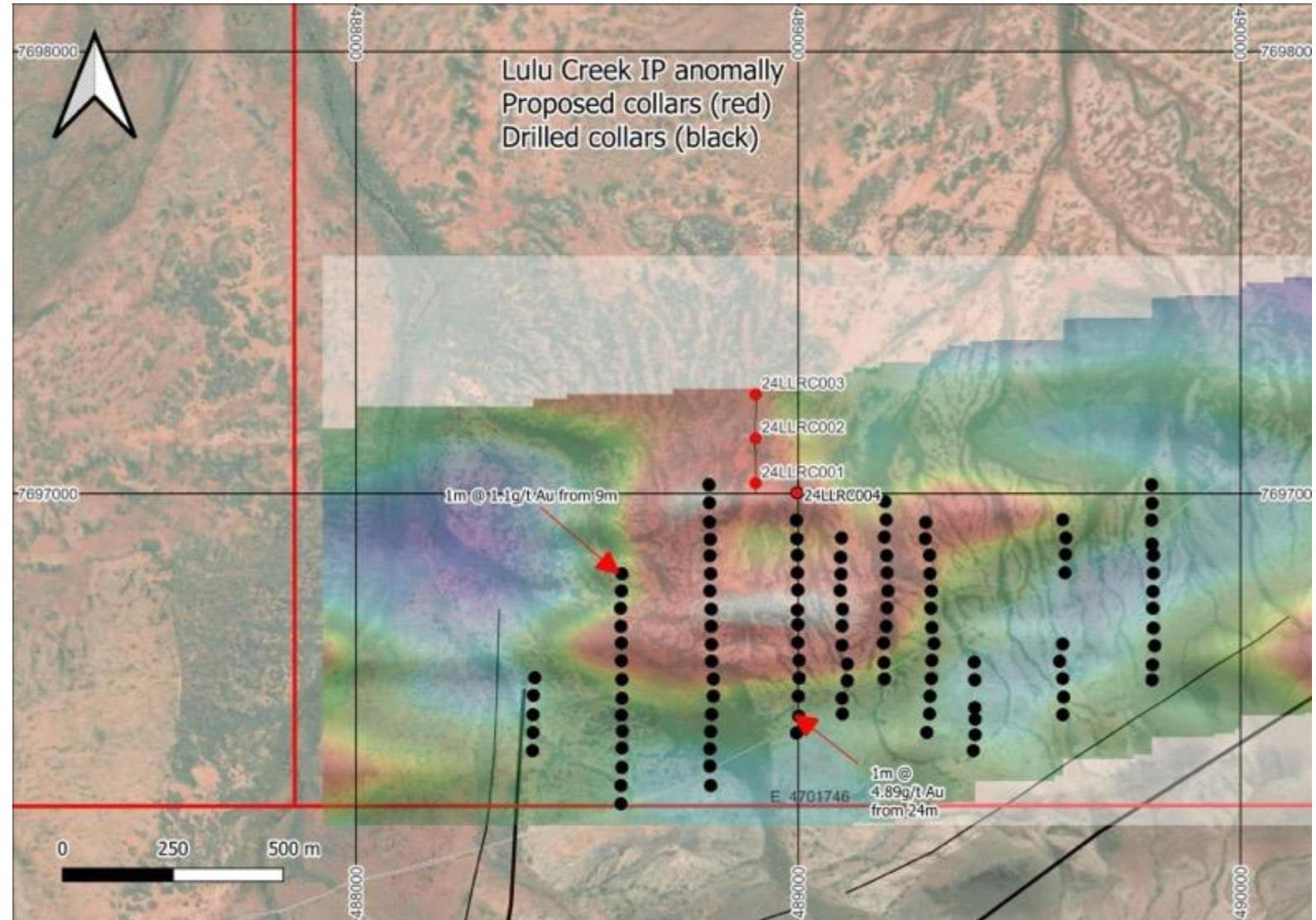
- 11km long zone of alteration haloes - appears related to vein hosted gold mineralisation
- Potential for further extensions of alteration zones by surface mapping and sampling
- Additional prospects yet to be defined with significant potential upside
- Geological and structural mapping in progress on Carlow tenement. Focus on defining:
 - Alterations
 - Structures
 - Intrusions
 - Host rocks



LULU CREEK

KARRATHA GOLD PROJECT

- 20km west of Carlow deposit on north side of regional structural corridor
- Previous drill results included:
 - ✓ **1m @ 4.89 g/t Au** and 13.7 g/t Ag from 24m in CWRC011
 - ✓ **1m @ 1.15 g/t Au** from 9m in CWRC017¹
- Drilling to date has been shallow, with a maximum hole depth 50m
- Three IP chargeability anomalies detected from dipole-dipole survey
- Government grant to test potential for intrusive related gold system (IRGS).
- 5 RC holes drilled for total 1,450m
- Drilling complete, assay results pending



RADIO HILL PROCESSING PLANT

KARRATHA PROJECT AREA

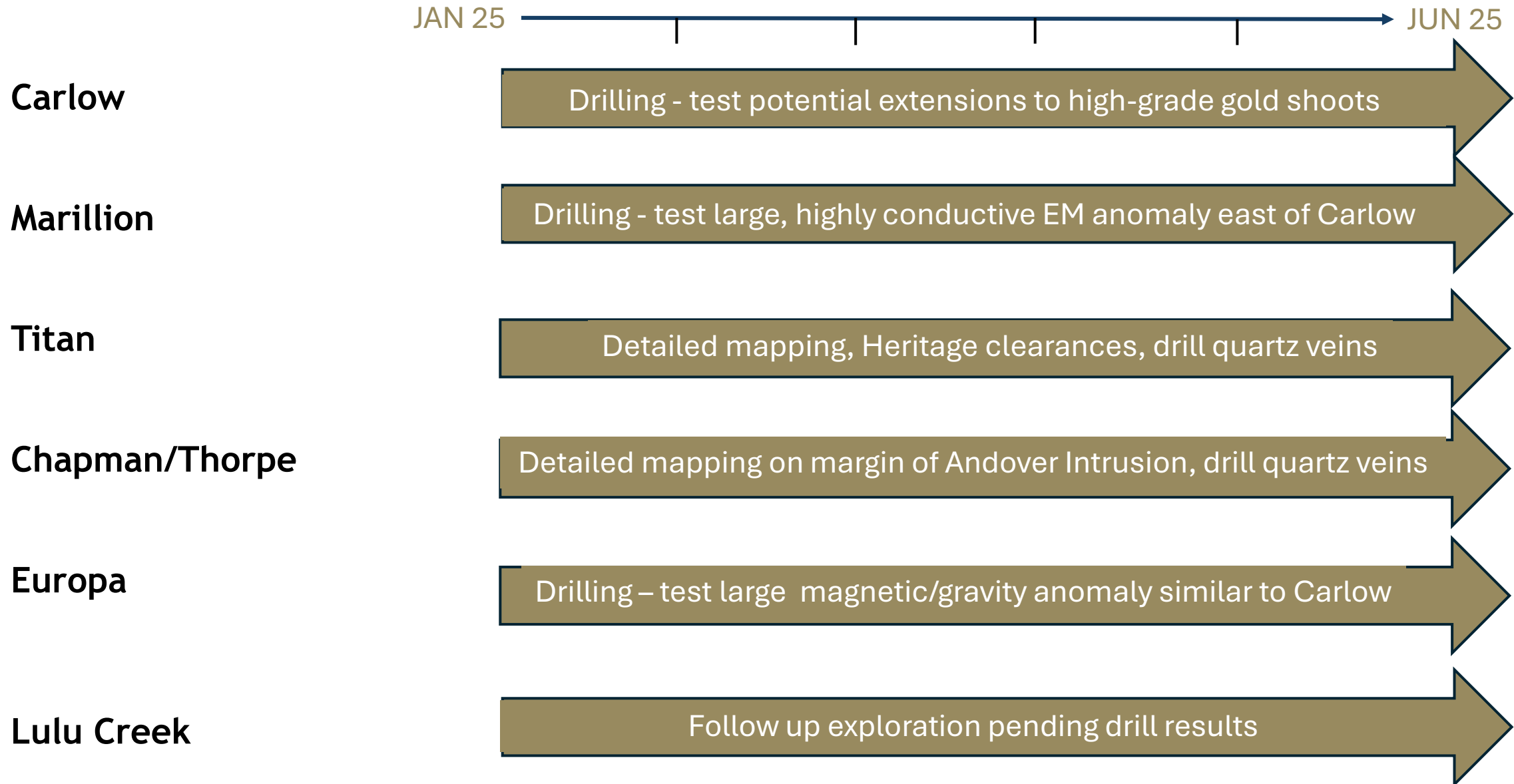
**100% Owned Processing Plant on
granted Mining Lease**

OVERVIEW

- 450,000 tpa plant on care and maintenance
- Located ~35km south of Karratha, adjacent to a major road, accommodation and other facilities
- Situated on a granted mining lease
- Significant associated plant infrastructure (power/water/accommodation) and spares inventory
- Three tailings storage facilities



Exploration



WHY INVEST?

New proven discovery team enhances chances of significant value generation via exploration drilling

Rapid identification of multiple gold targets within 6km wide prospective structural corridor

374Koz Au Carlow deposit – solid base for resource extensions

Further prospectivity across strategic tenement package >200km²



High priority exploration program with additional targets yet to be discovered

Karratha Lithium Project

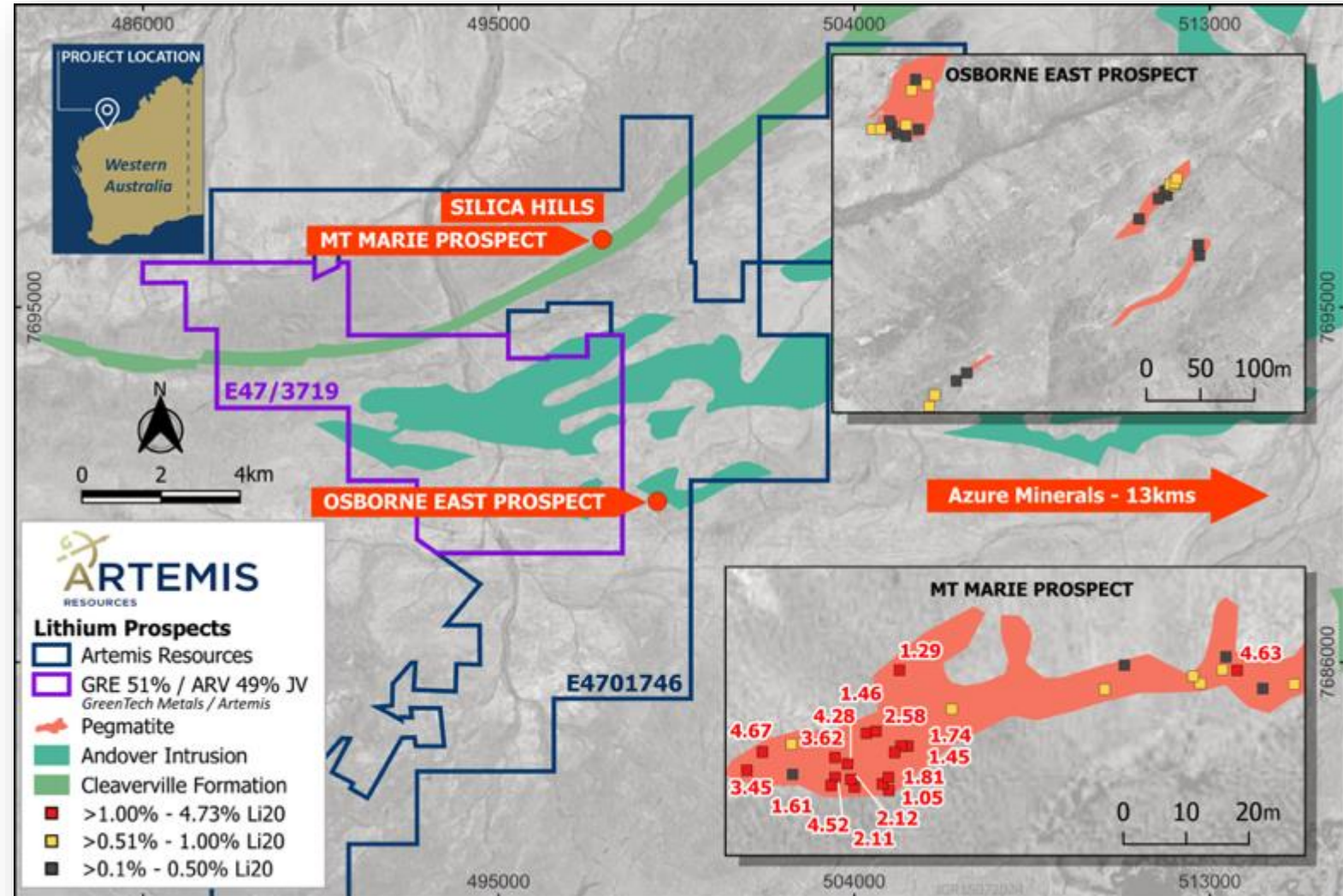
KARRATHA LITHIUM PROJECT

MT MARIE

- Assays have returned up to **4.67% Li_2O** pegmatite hosted mineralization; multiple results above **4% Li_2O**
- **XRD analysis confirms spodumene** mineralogy
- **Large, coarse spodumene crystals** highlights prospectivity

OSBORNE EAST

- Assays return multiple rock chips above **0.50% Li₂O**



OSBORNE LITHIUM JV (ARV 49% / GRE 51%)

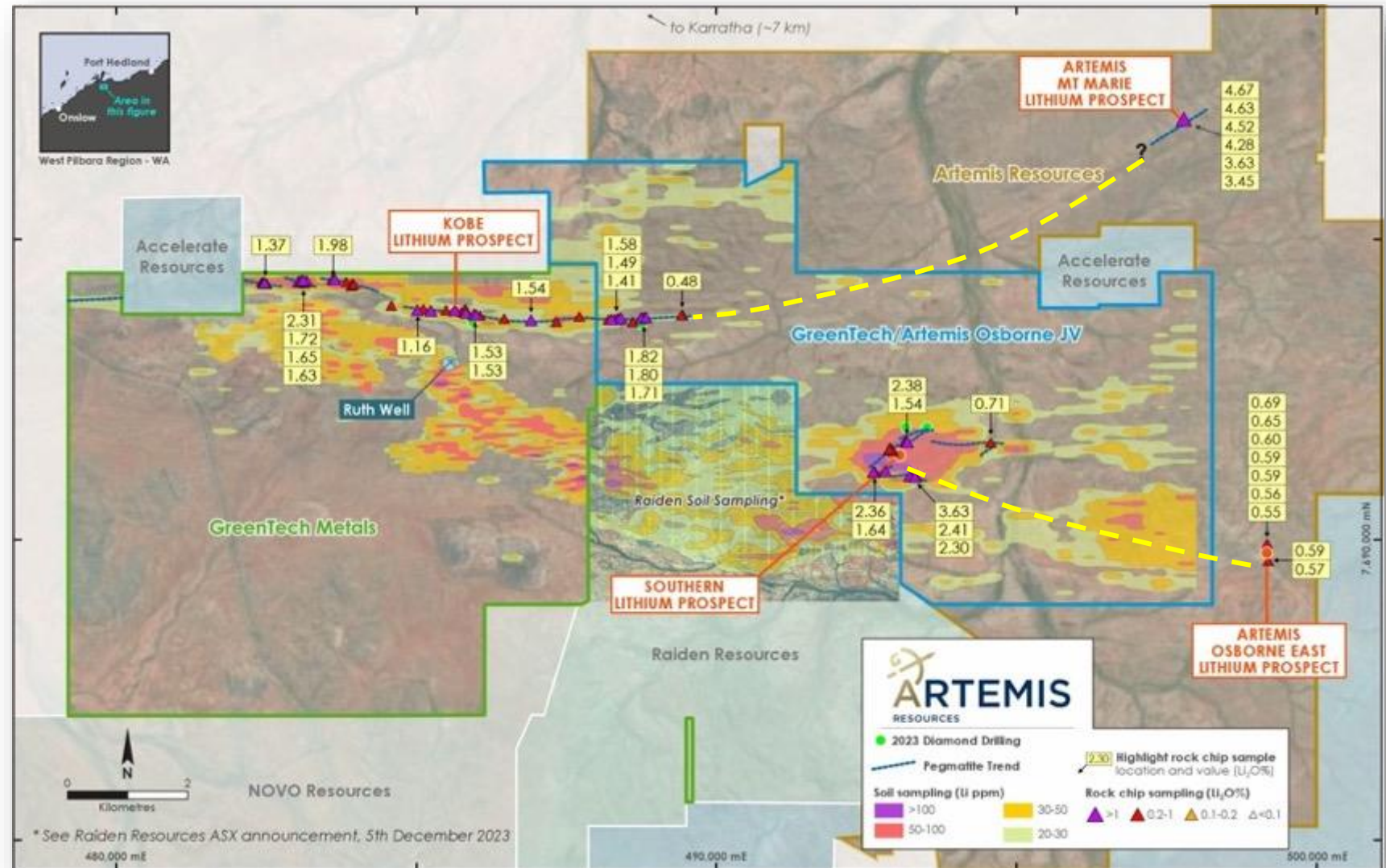
KARRATHA LITHIUM PROJECT

KOBE TREND

- 7.5km lithium pegmatite trend identified (Kobe Trend) extends eastwards onto the Osborne JV tenement by 1.5km
- Mineralisation confirmed as spodumene with widths up to 4m

SOUTHERN TREND

- 4km lithium pegmatite trend identified (Southern Trend)
- Mineralisation confirmed as spodumene with widths up to 40m
- Grades persist over strike length
- Multiple programs of works and heritage clearances approved for maiden RC drilling program

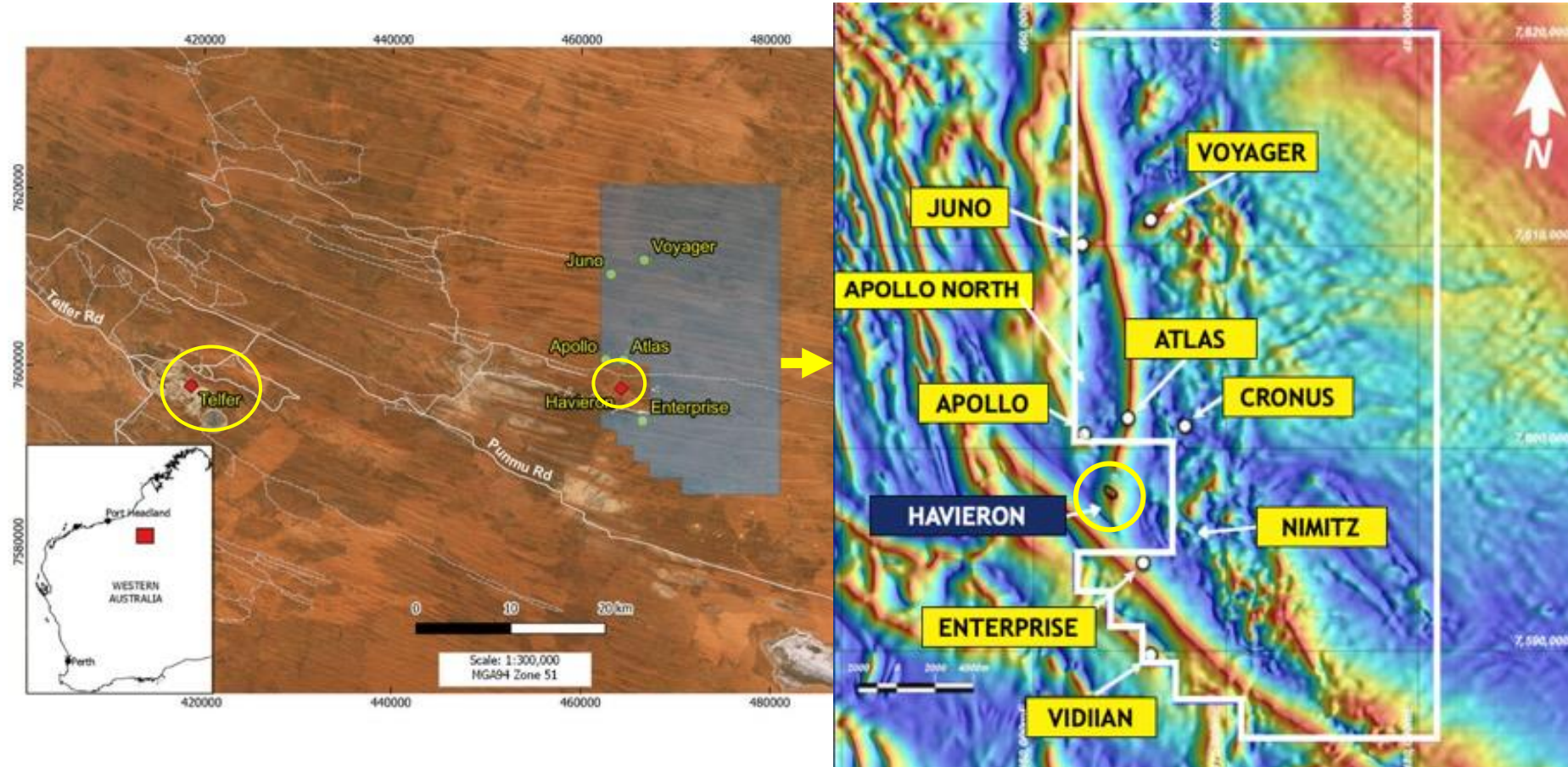


Paterson's Gold-Copper Project

PATERSON CENTRAL Au/Cu PROJECT

EAST PILBARA PROJECT

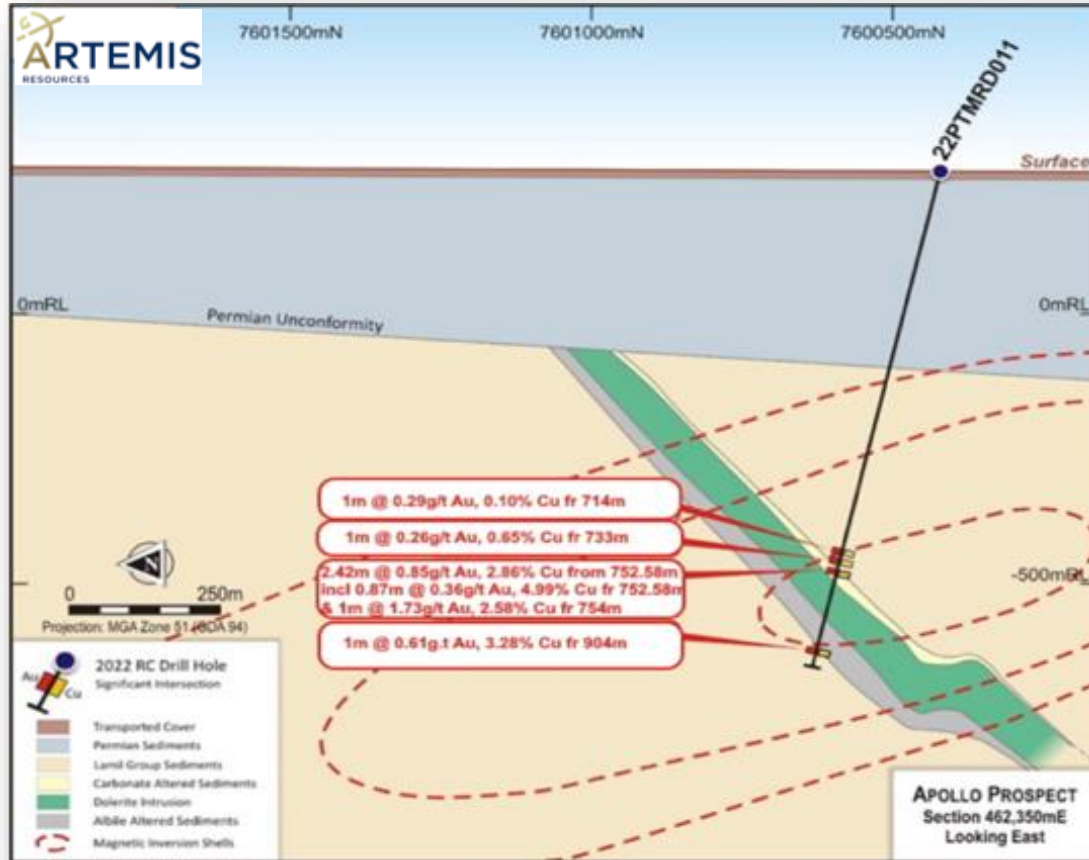
- 100% owned ~600km² exploration license covering the Paterson Central prospects
- Located adjacent to the world-class **8.4Moz AuEq Havieron** deposit owned by Greatland Gold
- Only ~45km from the Telfer mine
- Multiple targets generated using geological, magnetic, gravity, seismic, structural and geochemical datasets
- Previous drilling intercepted same lithotypes and similar mineralisation as Havieron
- These lithotypes are typical of a 'near-miss' at Havieron
- New target identified: **Apollo North**
- Process underway to farm out



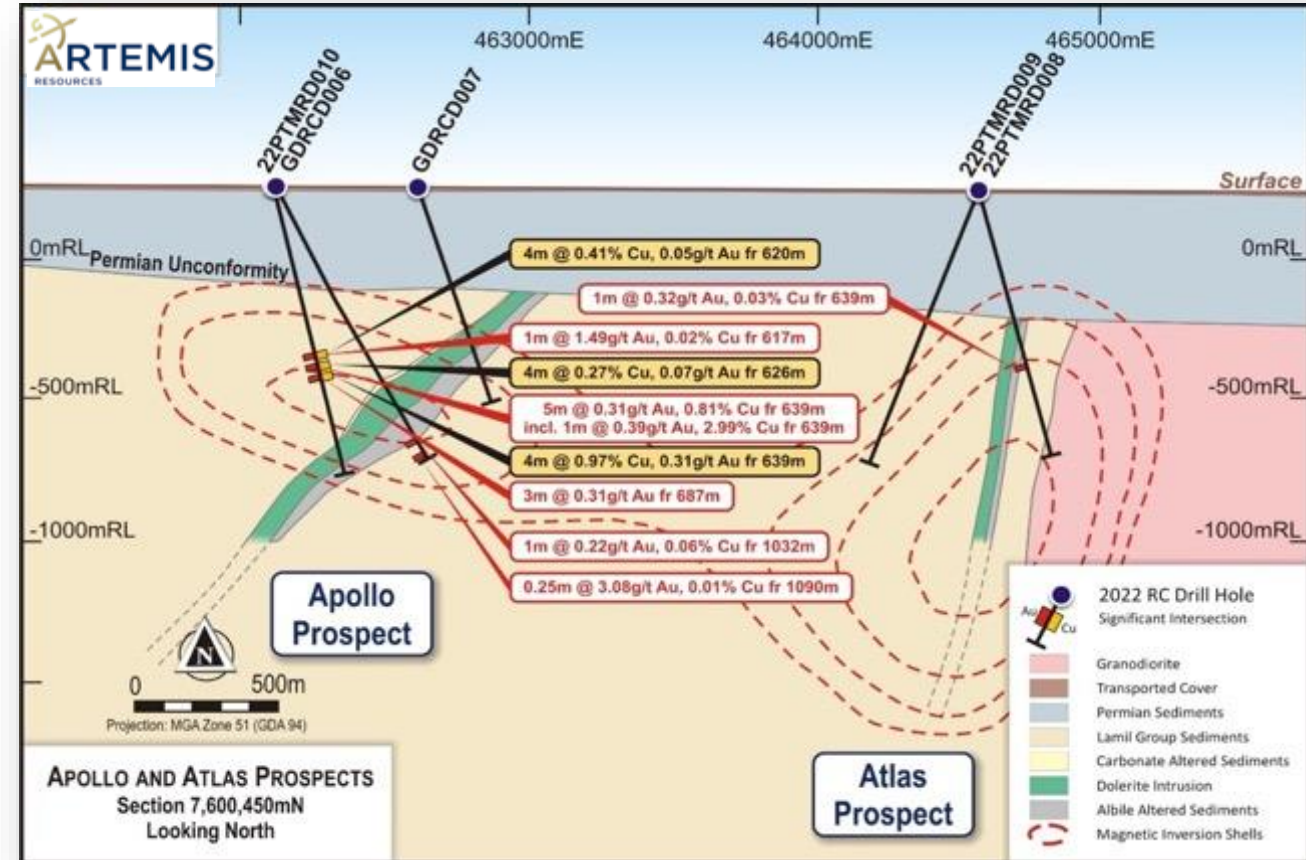
High potential greenfield exploration opportunity located adjacent to the world-class 8.4Moz AuEq Havieron discovery

ATLAS & APOLLO SIGNIFICANT INTERCEPTS

EAST PILBARA PROJECT



- Significant intercepts within drill hole 22PTMRD011 include **2.42m @ 0.85g/t Au and 2.86% Cu** from 752.58m, including:
 - 0.87m @ 0.36g/t Au and **4.99% Cu** from 752.58m;
 - 1m @ **1.73g/t Au and 2.58% Cu** from 754m; and
 - 1m @ 0.61g/t Au and **3.28% Cu** from 904m



- Significant intercepts within drill hole 22PTMRD010 include **5m @ 0.32g/t Au and 0.81% Cu** from 639m, including¹:
 - 1m @ 0.39g/t Au and **2.99% Cu** from 639m



CONTACT

George Ventouras - Executive Director

E: info@artemisresources.com.au

W: artemisresources.com.au



ASX:ARV | AIM:ARV | FRA:ATY | USOTC:ARTTF

APPENDIX: MINERAL RESOURCE

Greater Carlow Mineral Resource by weathering state^{1,2,3}

Domain	Tonnes (Mt)	AuEq (g/t)	Au (g/t)	Cu (%)	Co (%)	Au (oz)	Cu (t)	Co (t)
Oxide	1.29	1.5	0.8	0.59	0.07	34,000	8,000	1,000
Transition	1.49	2.0	1.2	0.84	0.09	56,000	13,000	1,000
Fresh	5.96	2.8	1.5	0.73	0.10	285,000	44,000	6,000
Total	8.74	2.5	1.3	0.73	0.09	374,000	64,000	8,000

Greater Carlow Mineral Resource by area above a cut-off of 0.7g/t AuEq^{1,3}

Domain	Tonnes (Mt)	AuEq (g/t)	Au (g/t)	Cu (%)	Co (%)	Au (oz)	Cu (t)	Co (t)
Main	6.33	2.4	1.3	0.70	0.08	271,000	44,300	5,100
Quod Est	0.19	3.2	1.5	0.85	0.24	9,000	1,600	450
Crosscut	0.73	2.2	0.7	0.99	0.09	16,000	7,300	650
Total	7.25	2.4	1.3	0.73	0.09	296,000	53,200	6,200

Greater Carlow Mineral Resource by area above a cut-off of 2.0g/t AuEq^{2,3}

Domain	Tonnes (Mt)	AuEq (g/t)	Au (g/t)	Cu (%)	Co (%)	Au (oz)	Cu (t)	Co (t)
Main	1.09	3.1	1.9	0.57	0.11	66,000	6,250	1,200
Crosscut	0.39	3.1	1.0	1.14	0.14	12,500	5,560	550
Total	1.49	3.1	1.6	0.72	0.12	78,500	10,700	1,750

Gold Equivalent formula

The gold equivalent formula used in the calculation of an Au Eq grade uses the following parameters:
It is the Competent Persons' view that all elements contributing to the gold equivalent calculation have the potential to be extracted and sold.

Oxide	Au Eq. equation = Au (g/t) + Cu(%) x 0.86 + Co(%) x 2.31
Transitional	Au Eq equation = Au (g/t) + Cu(%) x 0.81 + Co(%) x 2.17
Fresh	Au Eq equation = Au (g/t) + Cu(%) x 1.31 + Co(%) x 3.96

Significant inputs to the Mineral Resource

Parameter	Input value
Overall slope angles	Oxide 40°, Transition 45°, Fresh 50°
Processing cost	A\$50/t
Gold recoveries	Oxide 96%, Transitional 93.5%, Fresh 93%
Copper recoveries	Oxide 61%, Transitional 56%, Fresh 90.5%
Cobalt recoveries	Oxide 47%, Transitional 43%, Fresh 78%
Mining costs	A\$2.70/t + 0.5c/t per m below 30mRL, thereafter add Transitional A\$0.25/t and Fresh A\$0.50/t. OP strip ratio 12:1
NSRs (incl. payability, royalty and treatment and refining costs)	Gold: 94%, Copper 84%, Cobalt 41%
Gold price	A\$2,600/oz
Copper price	A\$12,699/t
Cobalt price	A\$90,478/t
Au royalty (in dore)	2.5%
Au royalty (in concentrate)	5%
Cu royalty	5%
Co royalty	5%

- 1 Reported above a cut-off of 0.7g/t AuEq within an optimised pit shell (current as at 13 October 2022).
- 2 Reported above a cut-off of 2.0g/t AuEq for underground using MSO shapes (current as at 13 October 2022).
- 3 The Resource is classified as an Inferred Mineral Resource in accordance with the JORC Code, 2012. All tonnes are dry metric tonnes. Figures may not compute due to rounding.