

Thursday, 19 December 2024

ROCK SAMPLING AND FIELD INVESTIGATION OF HISTORICAL COPPER WORKINGS - TWIN PEAKS PROJECT

NT Minerals Limited (ASX: NTM) ('NT Minerals', 'NTM' or 'the Company') is pleased to provide an update from its second field program at the Twin Peaks Project, located in the Murchison Province, WA. This program, conducted in mid-December, investigated the Twin Peaks copper workings and a coincident gravity/magnetic anomaly at the Premiership Prospect.

The field program was curtailed due to significant rainfall through the Murchison-Gascoyne region. NT Minerals intends to return in the new year to complete the planned reconnaissance and sampling program.

KEY POINTS

- Field reconnaissance of copper workings at Twin Peaks (Figure 1) and Ringing Bell Lode with reported historical production totalling 85 tonnes of copper, averaging 16% copper (refer ASX:NTM 29 July 2024).
- Sampling of porphyritic rocks near copper workings to establish a genetic relationship between felsic intrusive rocks and copper mineralisation in the area.
- 12 rock chip samples collected, including 3 samples with malachite mineralisation.
- 54 soil samples collected at Premiership Gravity Target.

NTM Managing Director Rodney Illingworth commented,

"The completion of the second field program at Twin Peaks has provided exciting rock chip and soil samples for analysis. This work, which was suspended prematurely, focussed on several priority areas which the Company believes will advance its understanding and enhance the prospectivity of the area and assist in planning a significant exploration program in the first half of 2025."



Figure 1: Twin Peaks Main Shaft with abundant malachite-stained rocks surrounding the shaft collar.

Historical Copper Workings – Twin Peaks Main Shaft and Ringing Bell Lode

The Twin Peaks Main Shaft copper workings comprise the Main Shaft (to an estimated depth of 30m) and a series of surface pittings aligned in a southwest orientation over a distance of 330 metres. The Ringing Bell Lode is comprised of a single shaft and shallow pittings aligned in a north-south orientation. Location of these historical copper workings is shown in Figure 2.

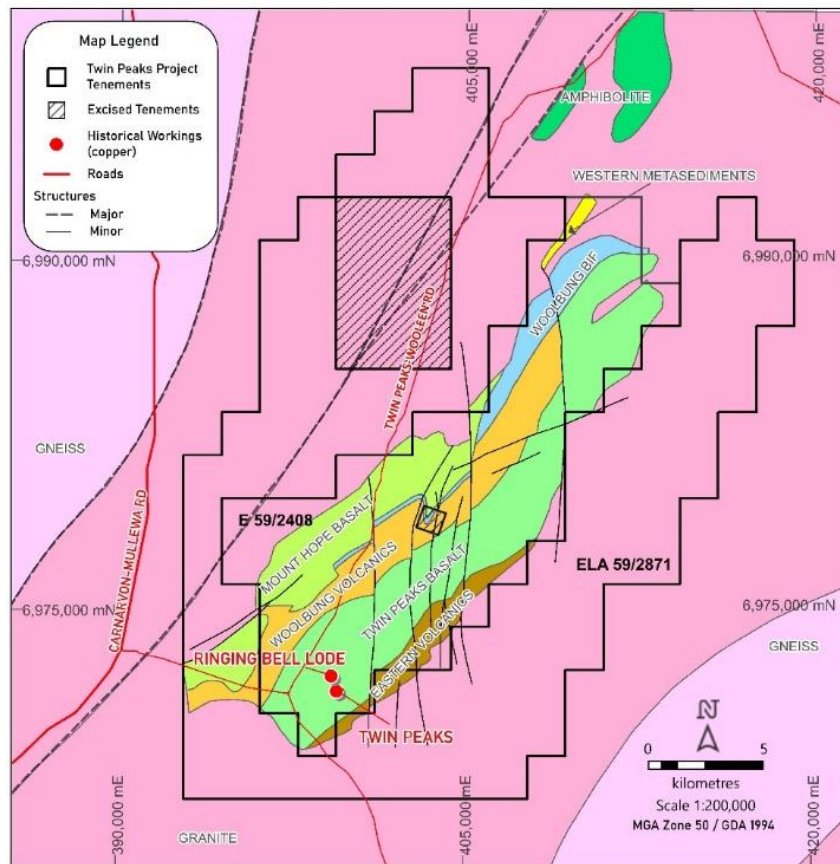


Figure 2: Twin Peaks Project Geology Plan with location of the Twin Peaks and Ringing Bell Lode Workings.

The workings typically display abundant float material of malachite-stained weathered meta-basalt and foliated porphyry around the main shaft and surface pittings (refer Figure 3). Alteration is dominantly observed as silica/carbonate of the host rocks, a peripheral chlorite/epidote zone has been documented historically but was not readily observed in the field.

Previous explorers had noted several occurrences of outcropping porphyry intrusive rocks within the vicinity of the copper workings and along a north-south trend. Field investigations could not accurately determine the location of some of these occurrences. Where porphyry rocks were identified in outcrop, they were rock chip sampled for multi-element analysis.

In total, 12 rock-chip samples were collected from the vicinity of the historical copper workings (refer Figure 4), comprising malachite mineralisation, porphyry, meta-basalt, schist and meta-sediment.

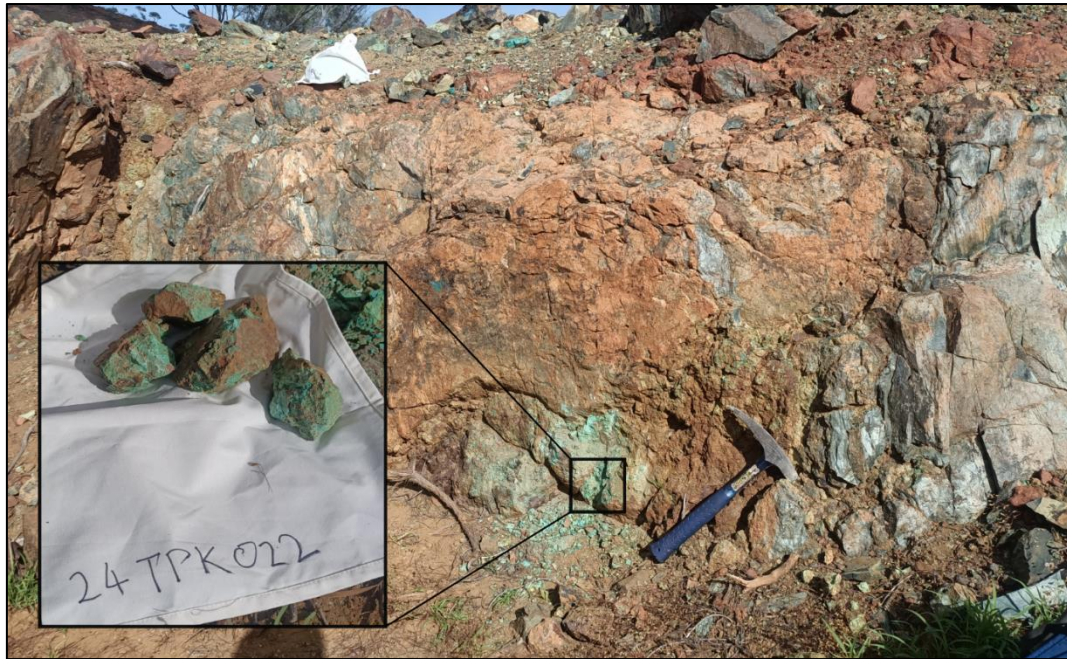


Figure 3: Twin Peaks Main Shaft Trend - in situ malachite staining of country rock.

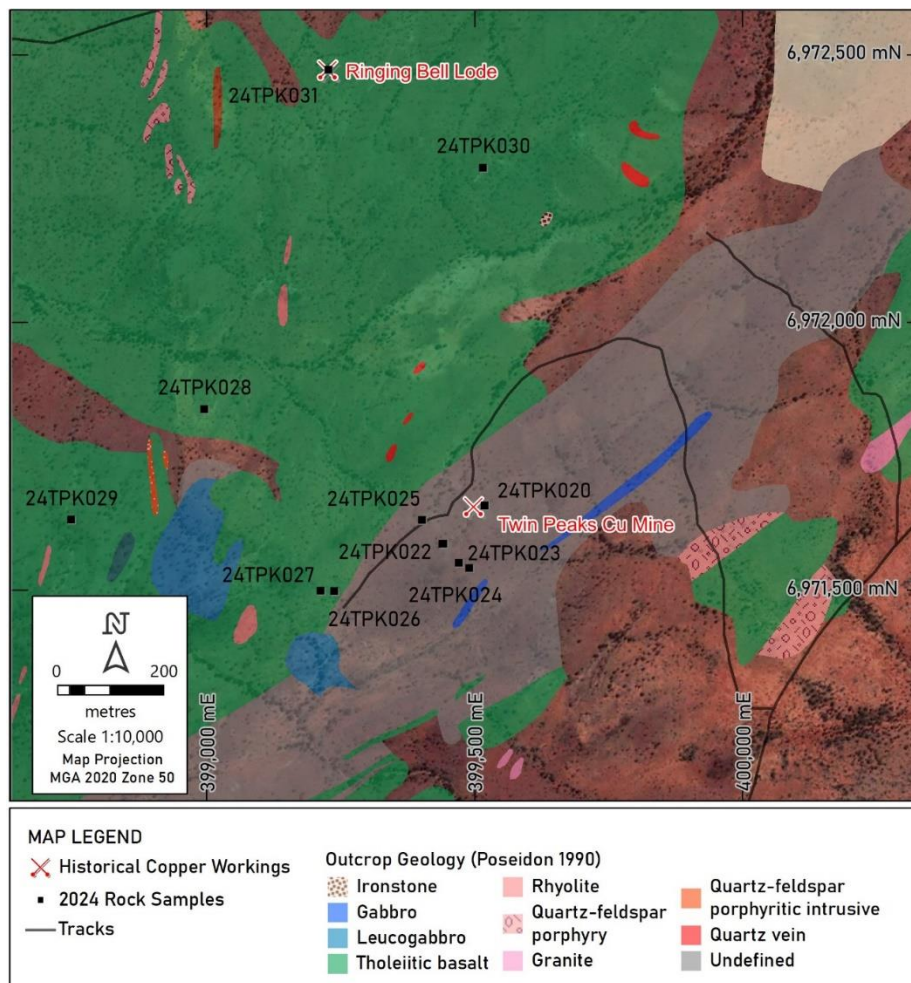


Figure 4: Rock-chip sampling location at Historical Copper Workings in relation to outcrop geology, Poseidon 1990.

Premiership Gravity Target

Located 7km southwest of the Woolbung Peak Hematite Open Pit, the Premiership Target is a 900-metre-long, northeast-trending gravity anomaly with a coincident linear magnetic high. Historical exploration, including surface soil geochemistry and RAB drilling, was conducted to the east but was largely ineffective, stopping in lateritic material or underlying clays.

Four soil sampling traverses spaced 360 meters apart with samples collected every 80 metres were planned to cover the extent of the gravity anomaly, for a total of 84 soil samples. From the program planned, only 2 and a half lines were completed, with total of 54 samples collected, refer Figure 5.

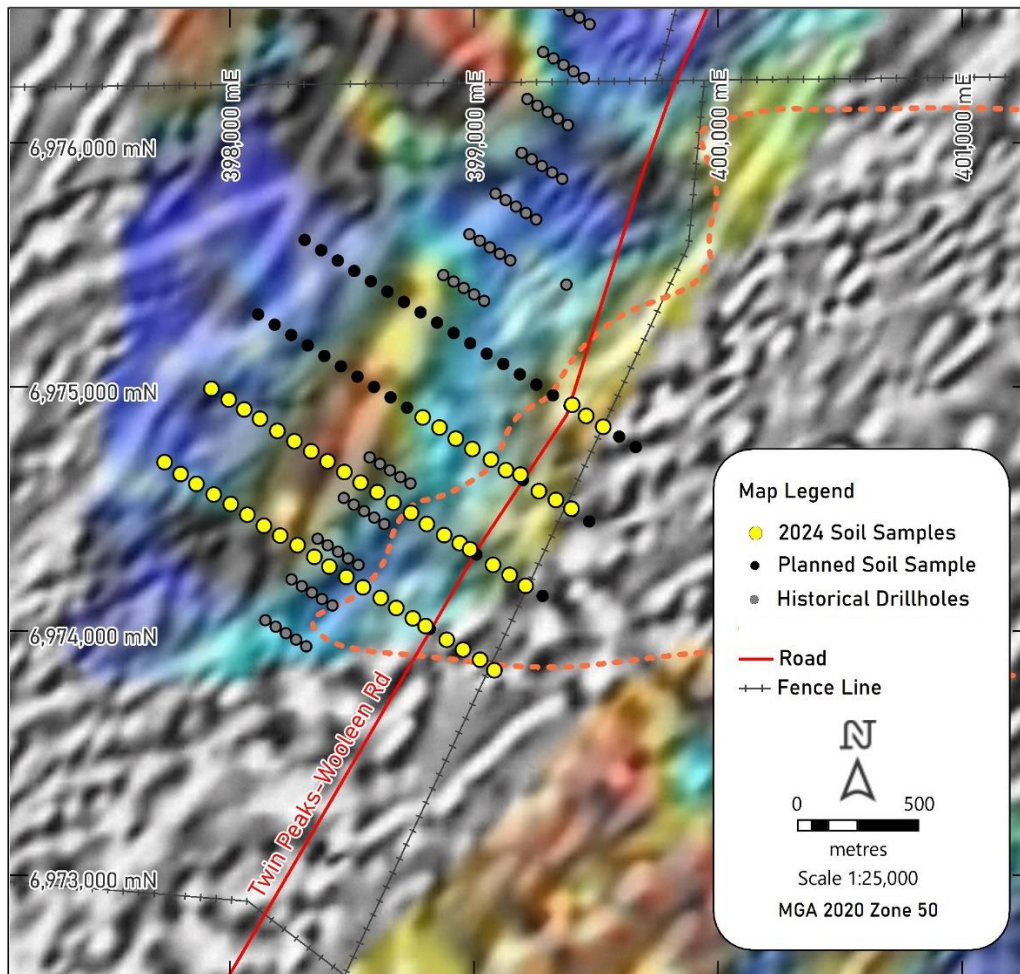


Figure 5: Premiership Gravity/Magnetic Target – Soil Sample Locations.
(Image: Gravity_up50_1vd_nesun_rbw draped on Magnetics_TMI_2vdagcrtp_gsc)

-ENDS-

This announcement was approved and authorised for issue by the Board of NT Minerals.

Investor Enquiries

Stephen Moloney
Corporate Storytime
stephen@corporatestorytime.com
+61 403 222 052

Competent Person's Statement

The information in this release that relates to Exploration Results or Mineral Resources is based on, and fairly represents, information compiled by Mr. Greg Wilson, a Member of the Australian Institute of Mining and Metallurgy. Mr. Wilson is a Consulting Geologist providing services to NT Minerals Limited and a participant in NT Minerals Limited Incentive Awards Plan. Mr. Wilson has sufficient experience, which is relevant to the style of mineralisation and type of deposit under consideration, and to the activity he is undertaking, to qualify as a Competent Person as defined in the 2012 Edition of the 'Australasian Code for Reporting of Exploration Results, Mineral Resources and Ore Reserves'. Mr. Wilson consents to the inclusion of the matters based on his information in the form and context in which it appears.

Disclaimer

This announcement contains certain forward-looking statements. Forward looking statements include but are not limited to statements concerning NT Minerals Limited's ('NTM's) planned exploration program and other statements that are not historical facts including forecasts, production levels and rates, costs, prices, future performance, or potential growth of NTM, industry growth or other trend projections. When used in this announcement, the words such as "could", "plan", "estimate", "expect", "intend", "may", "potential", "should", and similar expressions are forward-looking statements. Such statements are not a guarantee of future performance and involve unknown risks and uncertainties, as well as other factors which are beyond the control of NTM. Actual results and developments may differ materially from those expressed or implied by these forward-looking statements depending on a variety of factors. Nothing in this announcement should be construed as either an offer to sell or a solicitation of an offer to buy or sell securities.