

## ASX ANNOUNCEMENT

11<sup>th</sup> February 2025

### Exploration Licence Granted for High-Grade Manganese Project in Pilbara

Following the Company's 18 June 2024 announcement 'Historical Data Review on New Nullagine Project Confirms High Grade Manganese of up to 45.7%', the Company provides the following update.

#### HIGHLIGHTS

- E45/6949 application granted, covering 68 blocks in the highly prospective Pilbara mineral field
- Historical rock chip samples indicate high-grade manganese, with assays up to 45.7% Mn\*<sup>1</sup>
- Limited historical exploration presents significant upside potential
- Tenure includes key geological formations associated with high-grade manganese deposits

**Great Dirt Resources Limited (ASX:GR8) ("Great Dirt" or "the Company")** is pleased to announce that exploration licence E45/6949, part of the Nullagine Project, has been officially granted by the Department of Energy, Mines, Industry Regulation and Safety.

The Nullagine Project comprising E45/6949 and E45/6950 is located in the East Pilbara region of Western Australia, approximately 50km northeast of Consolidated Minerals' high-grade Woodie Woodie manganese mine and 400 km southeast of Port Hedland. E45/6949 spans approximately 218km<sup>2</sup> and is considered highly prospective for manganese mineralisation.

**Managing Director Marty Helean commented:** "We are pleased to confirm the grant of exploration license E45/6949 in the highly prospective Pilbara mineral field. This zero cost accretion of valuable manganese tenure reinforces our commitment to delivering shareholder value. We look forward to advancing exploration efforts and providing further updates in due course. The team at Great Dirt continue to look for value accretive assets, across various commodities, that would complement our current projects."

\*<sup>1</sup>ASX Announcement 18 June 2024.

### Exploration Potential

Great Dirt compiled and reviewed historical exploration data on its newly acquired Nullagine Project, located approximately 50km northeast of Consolidated Minerals' Woodie Woodie manganese mine.

Tenement E45/6949 is highly prospective for manganese, with historical rock chip samples returning assays of up to 45.7% Mn. Historical exploration results, including high-grade manganese outcrops and coincident geophysical anomalies, suggest strong potential for significant discoveries.

The tenement hosts the stratigraphically significant Pinjian Chert and Carawine Dolomite, the primary host rocks for Woodie Woodie style manganese mineralisation.

Consolidated Minerals Pty Ltd ("ConsMin") operates the high-grade, open pit Woodie Woodie manganese mine. The Woodie Woodie operation comprises open-pit mining across several pits and a 1.6mtpa processing plant. Manganese ore has been mined at Woodie Woodie since the early 1950's and was the first bulk commodity exported from Port Hedland, 14 years before iron ore. Woodie Woodie has historically produced a high-grade manganese ore with a high manganese content, high manganese to iron ratio, low phosphorus and hard, competent nature. The ore is produced from high grade fault hosted deposits located on or near the unconformity between the Neoproterozoic Carawine Dolomite and the Paleoproterozoic Pinjian Chert breccia and sedimentary units of the overlying Manganese Group.

### Pending Exploration Licences

#### Nullagine Project

Application E45/6950 is currently subject to Objection 706373, lodged by Pilbara Manganese Pty Ltd, the holder of EL45/351. The objection is scheduled for a hearing on March 14, 2025. In an effort to facilitate a resolution, Great Dirt has formally requested to engage in discussions to address the objection and has submitted a request for an access agreement. The company remains committed to working collaboratively with all stakeholders to achieve a mutually beneficial outcome.

Aboriginal Heritage Protection Agreement for E45/6950 was signed in Q3 2024.

#### Pilbara Tenure Adjacent to Wildcat Resources

Application E45/6863 has successfully completed the native title advertising period, which concluded on February 4, 2025, without any objections. In alignment with this progress, Great Dirt has executed an Access Agreement for N050091 (Indigenous-held E45/6863) with Strelley Pastoral Pty Ltd, ensuring the necessary permissions for access and exploration effective 30<sup>th</sup> January 2025. Based on the current timeline and regulatory processes, Great Dirt anticipates that the application will be granted in the first quarter of 2025.

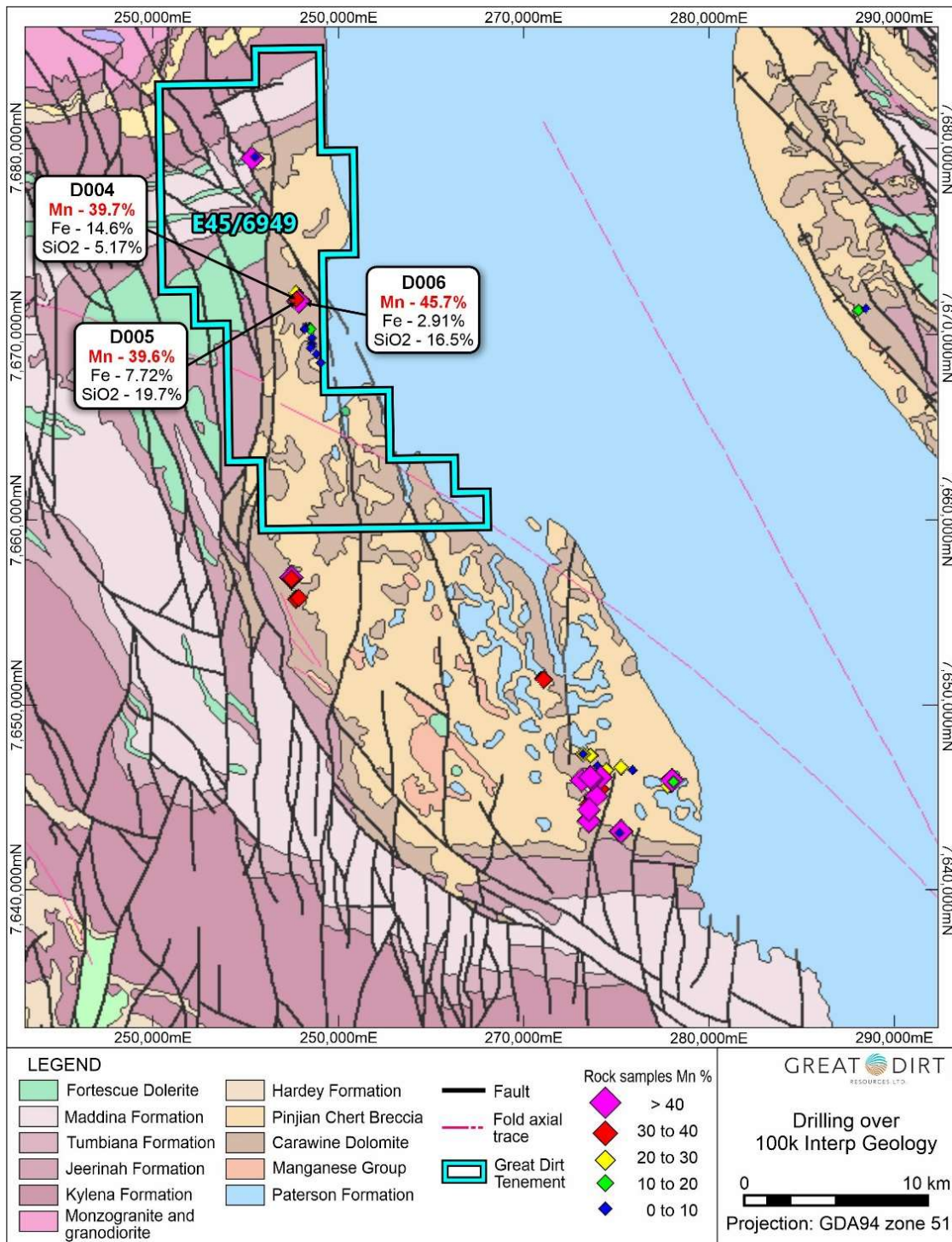


Figure 1: Geological map of Tenement E45/6949 with historical rock chip sampling (See ASX Announcement dated 18 June 2024 for reference of historically reported exploration results).

Great Dirt remains committed to advancing its highly prospective manganese tenements and will continue to provide updates as exploration progresses.

**Authorised for release to the ASX by the Board of Great Dirt Resources LTD.**

**For further information, please visit or contact:**



[www.greatdirt.com.au](http://www.greatdirt.com.au)



[info@greatdirt.com.au](mailto:info@greatdirt.com.au)



## About Great Dirt Resources Ltd

Great Dirt's **Doherty and Basin Projects** are contained within EL 9527, located near the Barraba township, in northern NSW. These projects are prospective for high-grade manganese, with both projects having produced metallurgical and battery grade manganese historically. The Doherty Project comprises the old Doherty and Junior Mines, plus other workings and occurrences of manganese. The Basin Project contains several smaller manganese workings.

From 1941, for two decades, mines of the Doherty Project produced around 9,000 tonnes of battery and metallurgical grade manganese, both from opencut and underground operations. The battery grade ore was delivered to Eveready in Sydney for use in dry cell batteries, the metallurgical grade ore was purchased by BHP for use in steel production.

Great Dirt believes that historical work, while having discovered manganese, is unlikely to have located all sources in the area. Floaters, large rock fragments in the soil profile, of high-grade manganese ore reported outside known mine areas are a direct indication of unidentified manganese mineralisation. Additionally, notes on the mineral occurrences of the area refer to extensions and deposits along strike that were not mined.

A program of modern, systematic, geochemical and geophysical surveys will test known targets and their extents and could locate previously unrecognised blind deposits. Subsurface geophysical methods and drilling is likely to yield further targets that could be developed into projects to produce metallurgical and battery grade manganese.

Great Dirt has significantly expanded its manganese exploration portfolio following the acquisition of two tenements (E45/6949 and E45/6950 – the '**Nullagine Project**'), ~ 50km northeast of Consolidated Minerals Woodie Woodie manganese mine, in the Shire of East Pilbara, Western Australia.

Following a successful ballot application, Great Dirt has expanded its WA portfolio to include a position in one of the most prominent lithium regions in Western Australia and worldwide. Tenement E45/6863 – '**Pilbara Project**' is located approximately 43km from Pilbara Minerals (ASX:PLS), Pilgangoora Lithium Project, one of the largest hard-rock lithium deposits in the world.



## Competent Person's Statement

Information in this announcement that relates to exploration results is based on and fairly represents information and supporting documentation prepared and compiled by Mr Michael Leu, who is a Member of the Australian Institute of Geoscientists and a Member of the Australasian Institute of Mining and Metallurgy. Mr Leu is the geological consultant for Great Dirt Resources Ltd. Mr Michael Leu has sufficient experience, which is relevant to the style of mineralisation and type of deposit under consideration and to the activity which he is undertaking to qualify as a Competent Person, as defined in the 2012 Edition of the Australasian Code for Reporting Exploration Results, Mineral Resources and Ore Reserves. Mr Michael Leu consents to the inclusion in the announcement of the matters based on this information in the form and context in which it appears.

## No New Information

Except where explicitly stated, this announcement contains references to prior exploration results, all of which have been cross-referenced to previous market announcements made by the Company. The Company confirms that it is not aware of any new information or data that materially affects the information included in the relevant market announcements.

## Forward Looking Statement

This report contains forward looking statements concerning the projects owned by Great Dirt Resources Ltd. If applicable, statements concerning mining reserves and resources may also be deemed to be forward looking statements in that they involve estimates based on specific assumptions. Forward-looking statements are not statements of historical fact and actual events and results may differ materially from those described in the forward-looking statements as a result of a variety of risks, uncertainties and other factors. Forward looking statements are based on management's beliefs, opinions and estimates as of the dates the forward looking statements are made and no obligation is assumed to update forward looking statements if these beliefs, opinions, and estimates should change or to reflect other future developments.