

# Barton Gold

ASX:BGD FRA:BGD3 OTCQB:BGDFF

South Australia's  
**1.7 Moz Au Growth Platform**

6 March 2025 | Corporate Presentation

*Perseverance Mine, Tarcoola Project*



# Important Notices

---

## Disclaimer

This document has been approved by the Board of Barton Gold Holdings Limited (ACN 633 442 618) (together with its affiliates, "Barton" or the "Company") and has been prepared for the exclusive use of the party to whom Barton delivers this document (the "Recipient"). The information contained in this document has been prepared in good faith by Barton. However, no representation or warranty, either express or implied, is made as to the accuracy, completeness, adequacy or reliability of the information contained in this document. This document contains only a synopsis of more detailed information in relation to the matters described herein and accordingly no reliance may be placed for any purpose whatsoever on the sufficiency or completeness of such information as presented herein. This document should not be regarded by the Recipient as a substitute for the exercise of its own judgment and the Recipient should conduct its own due diligence in respect of the contents of this document. To the maximum extent permitted by law Barton, its directors, officers, employees, advisers, agents and related bodies corporate ("Barton Gold Group") disclaim any or all liability for any loss or damage which may be suffered by any person as a result of the use of, or reliance upon, anything contained within or omitted from this document (regardless of whether the loss or damage arises in connection with any negligence, default, lack of care or misrepresentation by the Barton Gold Group or any other cause in connection with the provision of this document or the purported reliance on this document or the information contained in it). To the extent that any provisions in this Important Notices section may be construed as being a contravention of any law of the State or the Commonwealth, such provisions should be read down, severed or both as the case may require and the remaining provisions shall continue to have full force and effect.

This document has been prepared solely for informational purposes. This document does not constitute a prospectus and is not to be construed as a solicitation or an offer to buy or sell any securities, or related financial instruments, in any jurisdiction. The Recipient should not construe the contents of this document as legal, tax, accounting or investment advice or a recommendation. This document does not purport to contain all of the information a Recipient would require to make an informed decision whether to invest in the Company. Specifically, this document does not purport to contain all the information that investors and their professional advisers would reasonably require to make an informed assessment of the Company's assets and liabilities, financial position and performance, profits, losses and prospects. The Recipient must not rely on the information set out in this document and must make its own independent assessment and consult its own legal counsel, tax and financial advisors concerning any matter described herein. This document does not purport to be all-inclusive or to contain all of the information that the Recipient may require. No investment, divestment or other financial decisions or actions should be based solely on the information in this document. The distribution of this document may be restricted by law in certain jurisdictions.

This document must be treated as strictly confidential and must not be copied, reproduced, distributed, quoted, referred to or distributed to others at any time, in whole or in part, without the prior written consent of Barton.

## Cautionary Statement Regarding Forward-Looking Information

The figures, valuations, forecasts, estimates, opinions and projections contained herein involve elements of subjective judgment and analysis and assumption. Barton does not accept any liability in relation to any such matters, or to inform the Recipient of any matter arising or coming to the company's notice after the date of this document which may affect any matter referred to herein. Any opinions expressed in this material are subject to change without notice, including as a result of using different assumptions and criteria. This document may contain forward-looking statements. Forward-looking statements are often, but not always, identified by the use of words such as "seek", "anticipate", "believe", "plan", "expect", "target" and "intend" and statements that an event or result "may", "will", "should", "would", "could", or "might" occur or be achieved and other similar expressions. Forward-looking information is subject to business, legal and economic risks and uncertainties and other factors that could cause actual results to differ materially from those contained in forward-looking statements. Such factors include, among other things, risks relating to property interests, the global economic climate, commodity prices, sovereign and legal risks, and environmental risks. Forward-looking statements are based upon estimates and opinions at the date the statements are made. Barton undertakes no obligation to update these forward-looking statements for events or circumstances that occur subsequent to such dates or to update or keep current any of the information contained herein. Any estimates or projections as to events that may occur in the future (including projections of revenue, expense, net income and performance) are based upon the best judgment of Barton from information available as of the date of this document. There is no guarantee that any of these estimates or projections will be achieved. Actual results will vary from the projections and such variations may be material. Nothing contained herein is, or shall be relied upon as, a promise or representation as to the past or future. Any reliance placed by the Recipient on this document, or on any forward-looking statement contained in or referred to in this document will be solely at the Recipient's own risk. The Barton Gold Group expressly disclaims any and all liability relating or resulting from the use of all or any part of this document or any of the information contained herein.

## Date and Currency

This document is dated 6 March 2025 ("Preparation Date") and is based on the Company's prospectus dated 14 May 2021 ("Prospectus") for an offer to acquire fully paid ordinary shares ("Shares") in the capital of the Company ("Offer"), updated for the results of the Offer, and Barton ASX announcements as from the date of the Prospectus. A copy of the Prospectus is available for download at [www.bartongold.com.au](http://www.bartongold.com.au) or [www.asx.com.au](http://www.asx.com.au). The delivery of this document at any time after the Preparation Date does not imply the information contained in it is correct at any time after the Preparation Date. Delivery of this document does not imply, and is not to be relied upon as a representation or warranty that: (i) there has been no change since the Preparation Date in the business, operations, financial condition, prospects, creditworthiness, status or affairs of the Company or any of the Company's related bodies corporate or affiliates; or (ii) the information contained in this document remains correct and not misleading at any time after the Preparation Date. The information in this document should be considered dynamic and may change over time. Subject to its obligations at law, Barton has no responsibility or obligation to update this document or inform the recipient of any matter arising or coming to their notice after the Preparation Date which may affect any matter referred to in the document. All dollar values expressed in this document are Australian dollars (\$, A\$, or AUD).



# 1.7 Moz SA Developer

Strategic 'first mover' with permitted infrastructure in a proven gold district



## Leading the re-emergence of South Australian gold

- South Australia: 25% of Australian gold, 2.5% of production <sup>(1)</sup>
- ~5,000km<sup>2</sup> tenements (1.25m acres), & region's only gold mill
- Targeting district scale discoveries & 150kozpa production



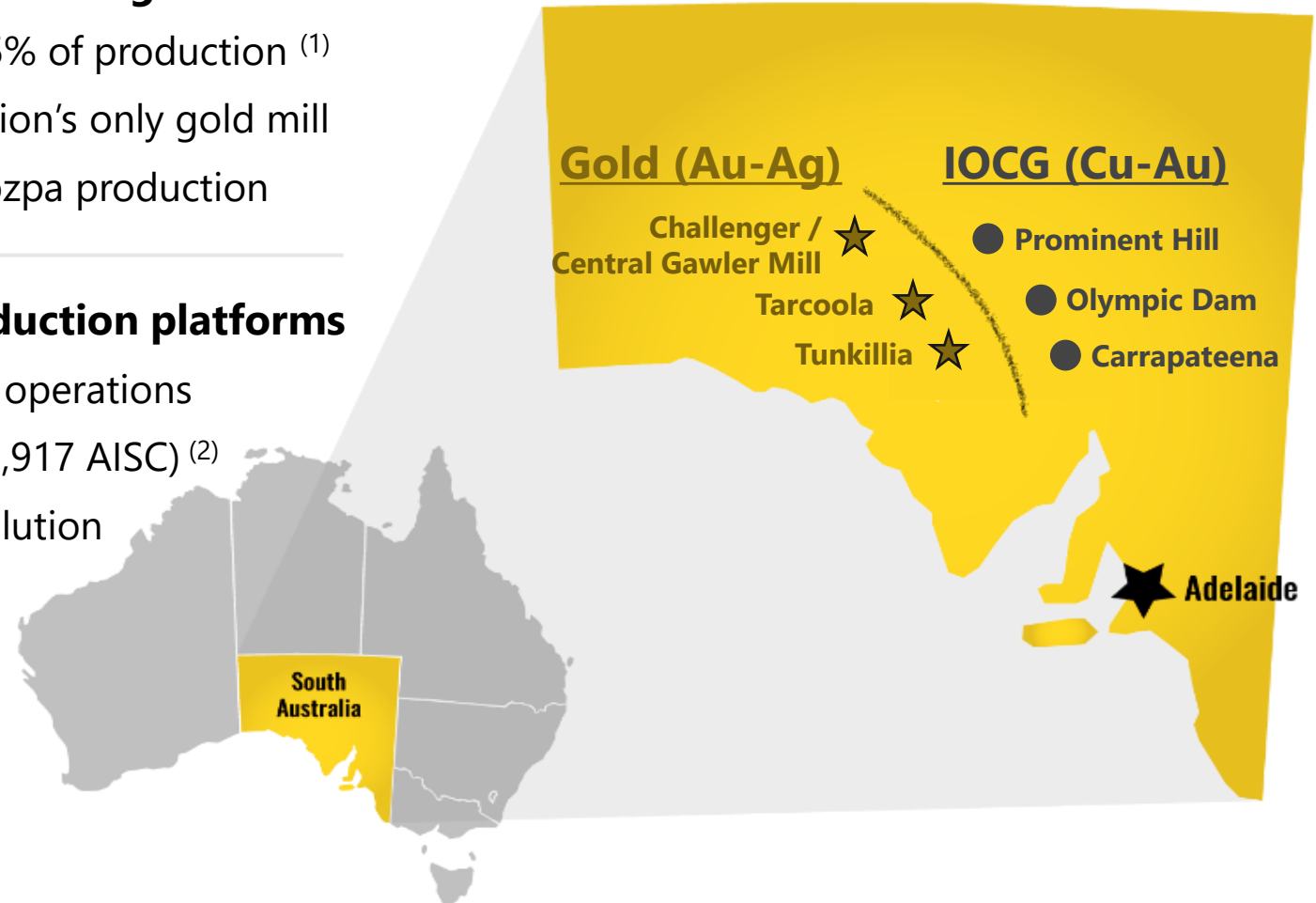
## Staged approach: near & long-term production platforms

- Stage 1: transition existing mill and MLs → operations
- Stage 2: add Tunkillia (~130Kozpa Au @ \$1,917 AISC) <sup>(2)</sup>
- Large-scale result w/ lower cost, risk and dilution



## Key catalysts:

- ✓ **Tunkillia JORC Resources upgrade** <sup>(3)</sup>
- 2) Tunkillia Optimised Scoping Study**
- 3) Stage 1 restart options / timeline**



1 Government of South Australia – Dept for Energy & Mining, Geoscience Australia

2 Refer to Annexures and ASX announcement dated 16 July 2024

3 Refer to ASX announcement dated 4 March 2025

# Capital Structure

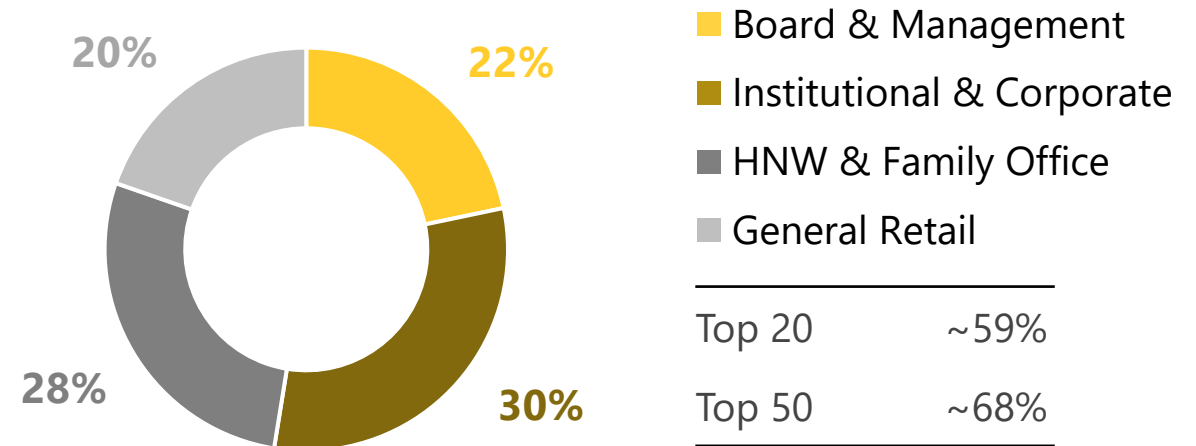
(\$AUD)

Shares on issue <sup>(1)</sup>	218.8 million
Market Cap (\$0.28 / share) <sup>(2)</sup>	\$61 million
<b>Cash</b> <sup>(3)</sup>	<b>\$9.2 million</b>
<b>Enterprise Value</b> <sup>(4)</sup>	<b>\$52 million</b>
Options on issue <sup>(1)</sup>	25.9 million
Debt	Nil

- **Steady consolidation** of BGD shares by domestic and international institutions and HNW investors
- **Low-dilution** track record with over \$12m capital generated internally since BGD's June 2021 IPO <sup>(6)</sup>
- **Commercialisation focus** for 2025, targeting key catalysts for near- and long-term platforms

Strong funding position with register consolidating around aligned management and reliable progress

## Share Distribution <sup>(5)</sup>



COLLINS ST ASSET MANAGEMENT  MERK  IXIOS Asset Management

BALLINGAL INVESTMENT ADVISORS

CUMULUS WEALTH

MERCER | STREET  
CAPITAL PARTNERS, LLC

PRIMERO



OTC QB

BÖRSE  
FRANKFURT

1 Refer to ASX announcement dated 11 December 2024

2 As at ASX market close on 5 March 2025; subject to rounding

3 As at 13 Jan 2025; Barton also has another \$4.5m restricted cash posted as security for rehabilitation bank guarantees

4 Market cap less cash and nil debt, subject to rounding

5 Estimate based upon Company analysis as at 8 Nov 2024

6 Refer to ASX announcement dated 24 January 2025





# Experienced Leadership

Strong SA and gold pedigree

## Board of Directors



**Ken Williams | Non-Executive Chair**

- ~30 years in mining, aviation & financial services
- Former CFO Normandy Mining (Newmont Australia)



**Alexander Scanlon | Managing Director & CEO**

- ~20 years in principal investments & resources
- Founder of Barton Gold, former MD PARQ Capital



**Christian Paech | Non-Executive Director**

- ~30 years in private & public legal practice
- Former Santos Ltd General Counsel & CoSec



**Graham Arvidson | Non-Executive Director**

- ~20 years in mechanical engineering & CPMet
- Study, design & operation of multiple gold assets



**Jade Cook | Company Secretary**

- ~10 years' experience in Company Secretarial roles
- Chartered Secretary assisting multiple ASX entities

## Senior Management



**Nicola Frazer | Chief Financial Officer**

- ~25 years in South Australian mining & oil / gas
- Former Normandy / Newmont & Beach Energy corporate



**Kim Russell | General Manager, Development**

- ~30 years development / operations of large-scale mines
- Former Rex Minerals, Harmony Gold & Pilbara Minerals



**David Wilson | General Manager, Projects**

- ~40 years in mining & project management
- Former Normandy Chief Surveyor & Technical Supervisor



**Marc Twining | General Manager, Exploration**

- ~25 years in resources exploration & development
- Former Normandy / Newmont exploration geologist



**Ian Garsed | Principal Geologist**

- ~30 years in gold / IOCG discovery & Resources definition
- Former MIM, Minotaur Exploration & South32 Sr Geologist



# Dual Platforms

## Stage 1: Leverage Central Gawler Mill

- Leverage the region's only gold mill to transition → operations and cashflow
- Existing fully-permitted infrastructure with MLs & Native Title Mining Agreements <sup>(1)</sup>
- **Minimal ozs required; reviewing open pits, TSFs, UG and stockpiles**

## Stage 2: Expand to ~150kozpa Au

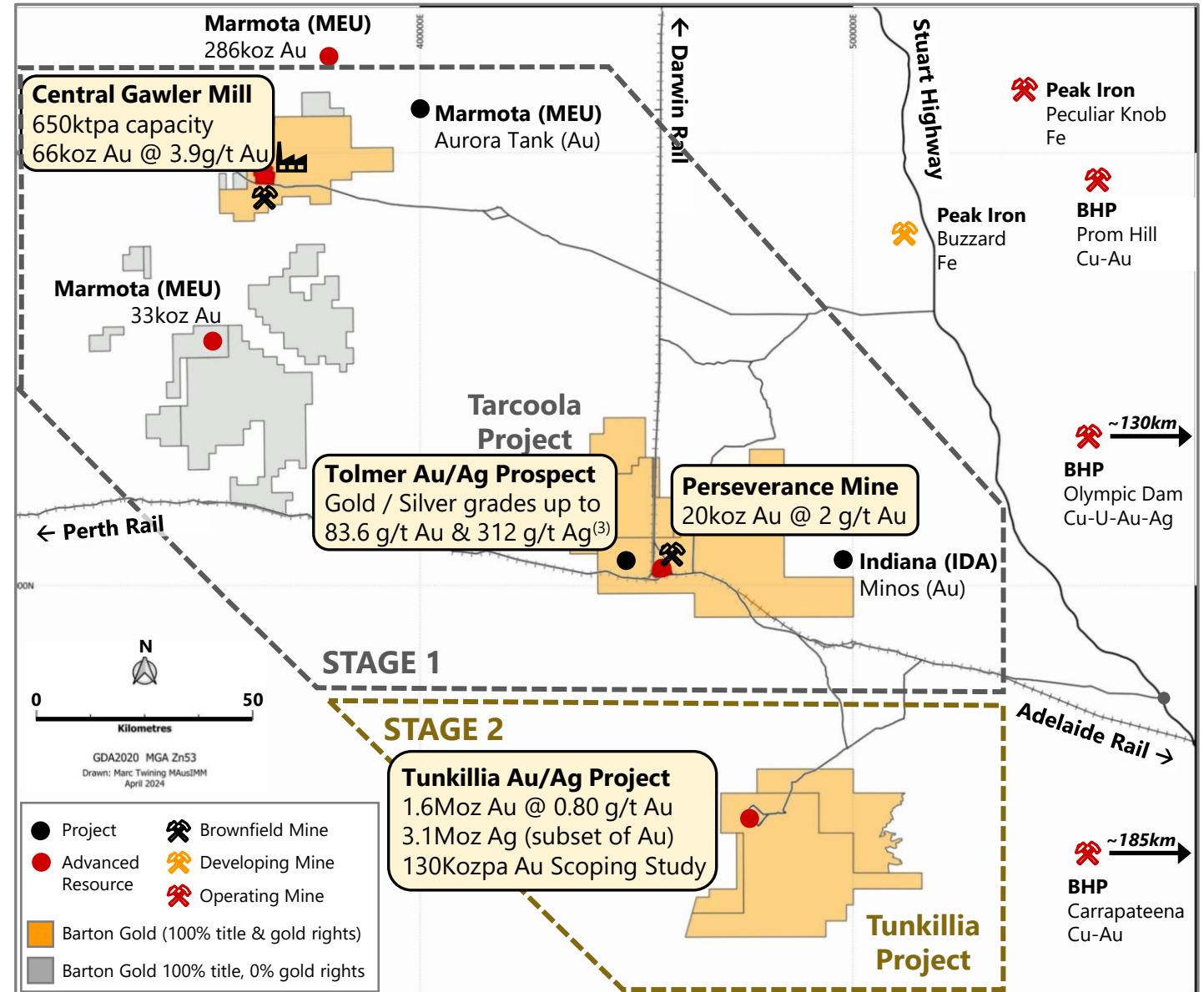
- Develop Tunkillia with new 5Mtpa open pit + mill → large-scale, efficient growth
- Own the region's only two gold mills and anchor long-term regional development
- **Scoping Study: competitive 130koz Au per annum @ A\$1,917 / oz Au AISC** <sup>(2)</sup>

<sup>1</sup> Refer to Prospectus

<sup>2</sup> Refer to ASX announcement dated 16 July 2024

<sup>3</sup> Refer to ASX announcements dated 27 August 2024 & 30 January 2025

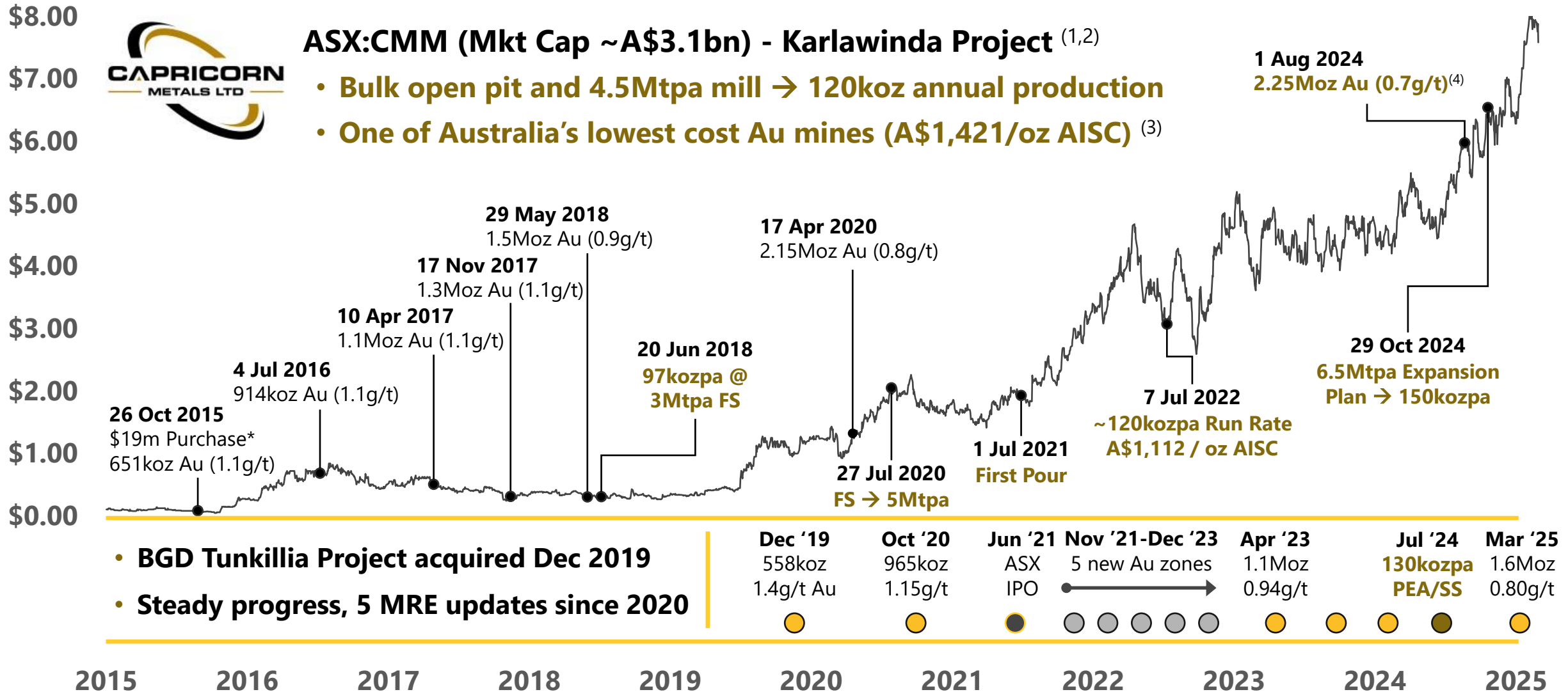
Large-scale destination with small-scale, low-risk start





# Following the Leader

Large-scale capital and operating efficiencies are the path to lower costs and higher profits



\* Based upon CMM price of \$0.11 per share (as adjusted) on 26 Oct 2015; Market Cap as at 8 Nov 2024  
1 Market data at 8 Nov 2024, for each event refer to BGD or CMM ASX Announcements of the same date;  
2 All \$ figures are AUD; AISC = All In Sustaining Cost; figures subject to rounding

3 Refer to CMM announcement dated 1 Aug 2024, by reference to FY 2024 AISC performance  
4 CMM 1 Aug 2024 MRE comprised of 1.97Moz Au in Indicated and 0.29Moz Au in Inferred categories

# Tunkillia Scale Platform



## Rapidly expanded → 1.6Moz gold & 3.1Moz silver

- 5 new gold zones + 5 MRE upgrades since Oct 2020 <sup>(2)</sup>
- **Historical data and new tech → efficient growth**
- **Scoping Study: ~130kozpa Au & 311kozpa Ag <sup>(3)</sup>**



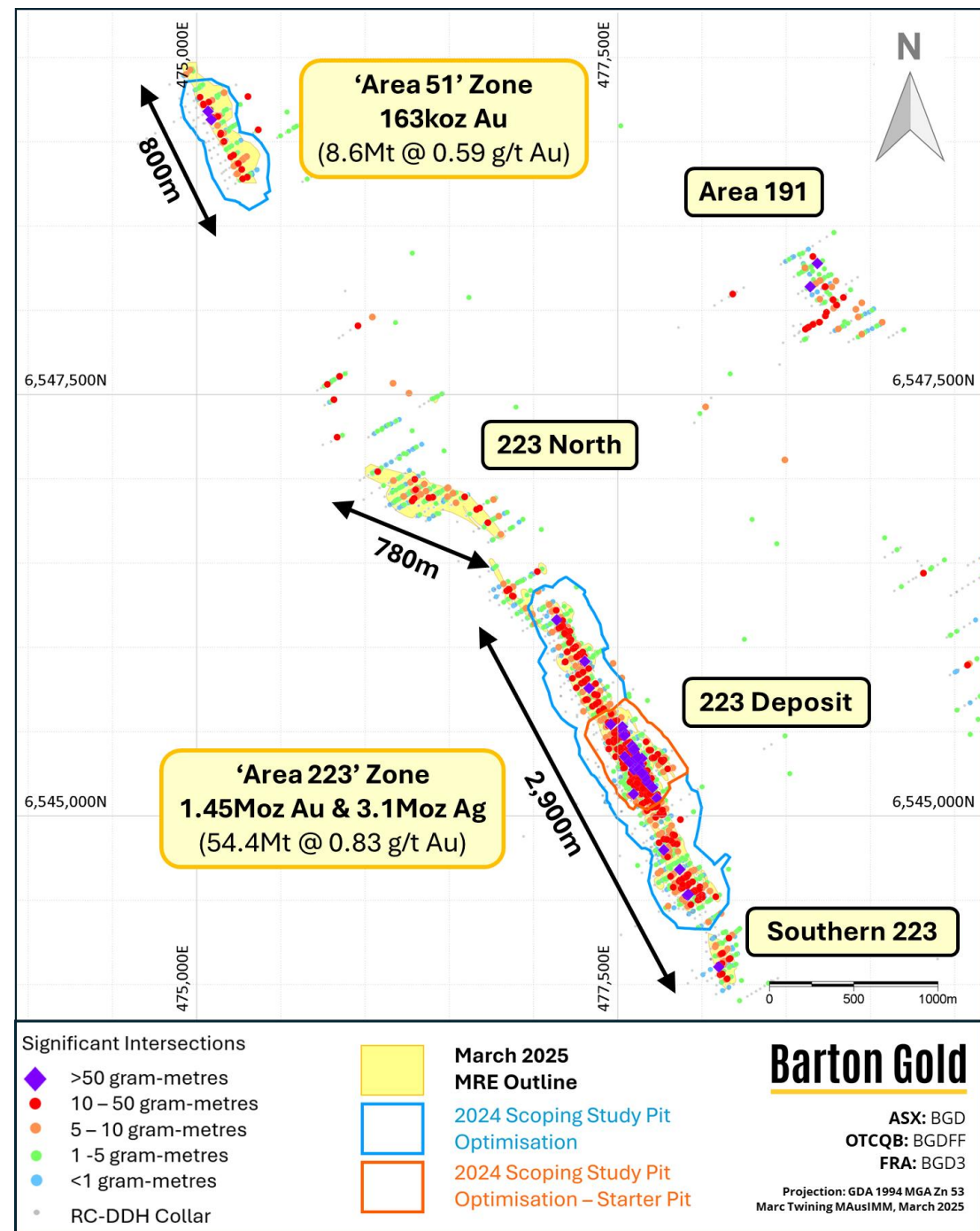
## Robust 5Mtpa 'base case' with upside potential

- Efficiencies available in comminution, power supply
- **Optimised Scoping Study underway for H1 2025**
- **+20km untested major shear zone along strike**

1 Company analysis of historical gold price and Tunkillia drilling data

2 Refer to Prospectus and ASX announcements dated 3/8/15 Nov 2021, 5 Sep 2022, 26 Apr, 15/21 Nov & 11 Dec 2023, 4 Mar 2024 & 4 Mar 2025

3 Refer to ASX announcement dated 16 July 2024

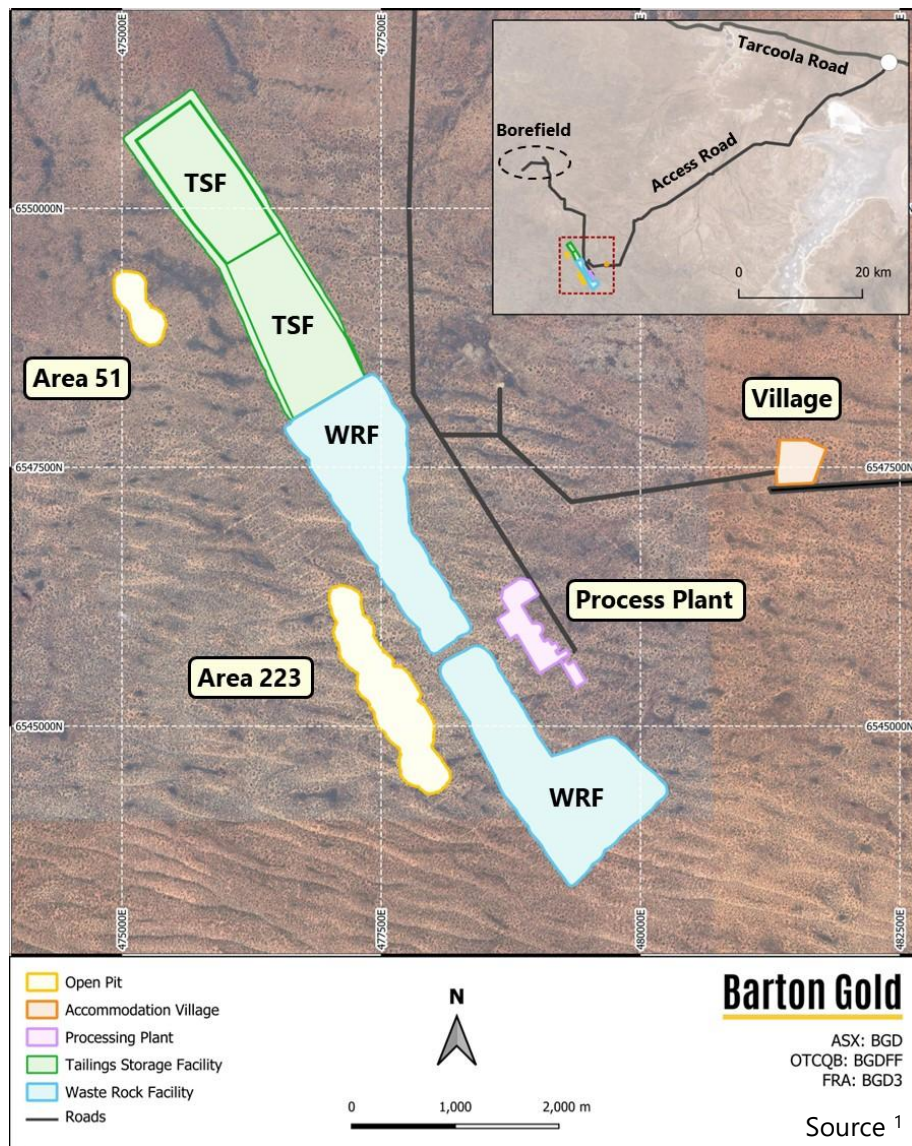






# Tunkillia Initial Scoping Study

Validates scale strategy and highlights optimisation targets



## Key outcomes: <sup>(1)</sup>

**5 Mtpa**  
throughput

**6.4 years**  
mining

**130kozpa**  
payable Au

**311kozpa**  
payable Ag

**A\$1,917**  
AISC / oz Au

**A\$1.3 bn**  
LoM EBITDA

**A\$512m**  
NPV<sub>7.5%</sub>

**40% IRR**  
(unlevered)

**1.9 years**  
payback

**A\$1,626**  
cash / oz Au

**Preliminary test** to solve for capex, opex & mine design @ 5Mtpa

**Conservative assumptions** demonstrate robust economic baseline

**Equity IRR & payback** driven by higher-grade 180Koz Au 'Starter Pit'

**1<sup>st</sup> Quartile AISC** versus reporting global and Australian operations <sup>(2)</sup>

→ **Optimised Scoping Study (OSS) ongoing: de-risk project model, extend LoM & improve NPV / Capex (pre-30 June completion)**

→ **Material efficiencies identified & JORC Resources expanded <sup>(3)</sup>; Mining Lease Application studies to start after OSS publication**

1 Refer to ASX announcement dated 16 July 2024

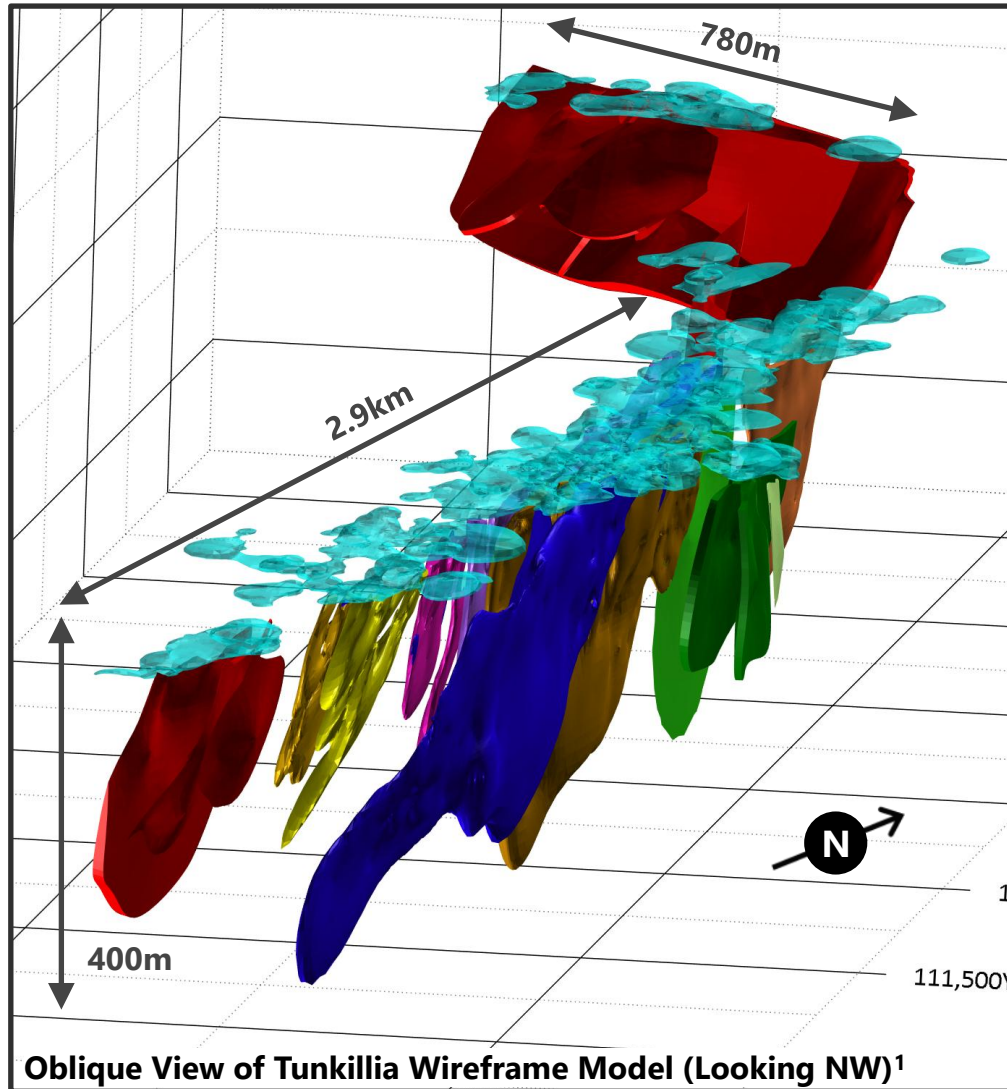
2 World Gold Council / Aurum Analytics – Global / ANZ Gold Operations (respective) (Q3 2024)

3 Refer to ASX announcements dated 24 Feb & 4 March 2025

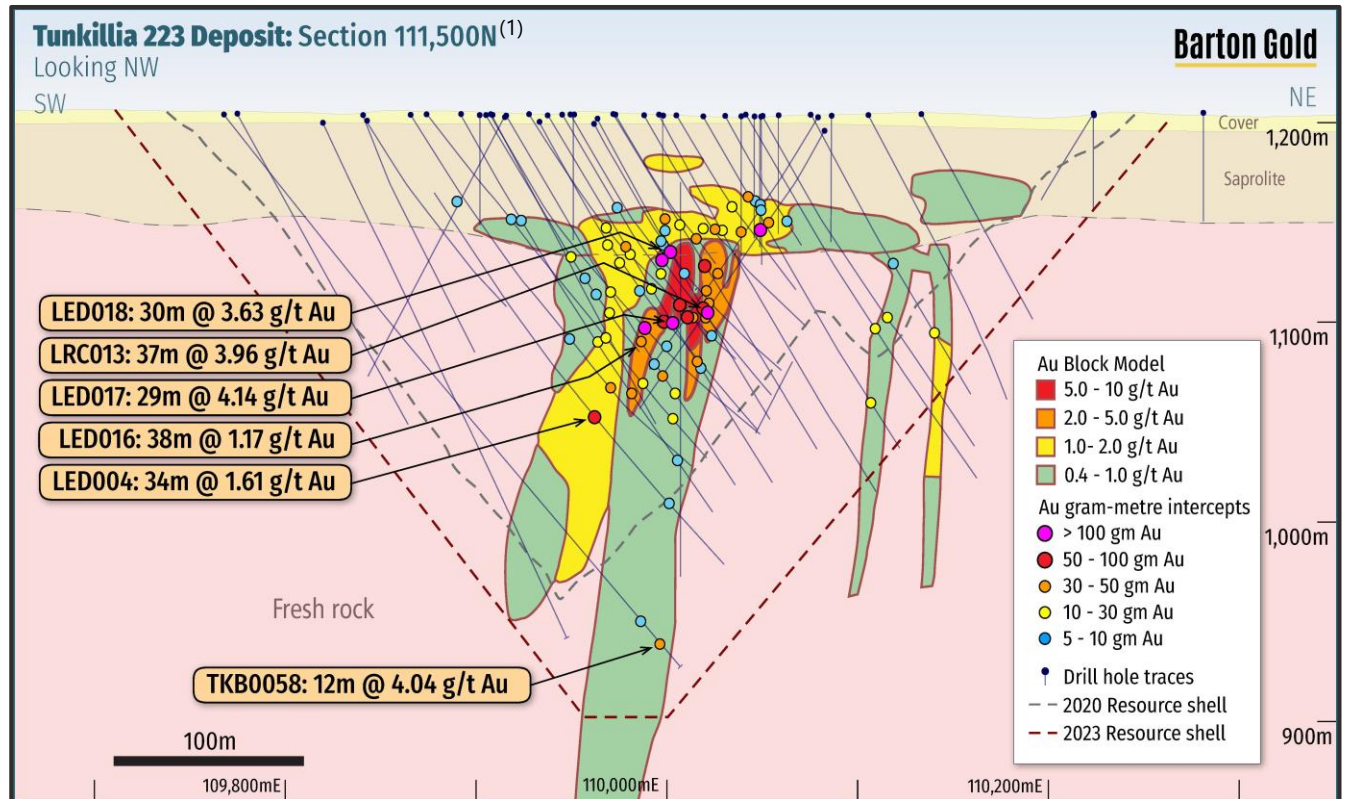


# Tunkillia Main Deposit

Attractive characteristics with higher-grade central core and shallow supergene zone



- ~80% of MRE tonnes & gold ounces within 200m of surface <sup>(1)</sup>
- ~**300m long higher-grade core** = valuable '**Starter Pit**' <sup>(1)</sup>
- +200koz Au in shallow (~35m deep) oxide / transitional layer <sup>(1)</sup>



<sup>1</sup> Refer to ASX announcements dated 11 December 2023 & 4 March 2025



# **Tunkillia** Staged Mine Design

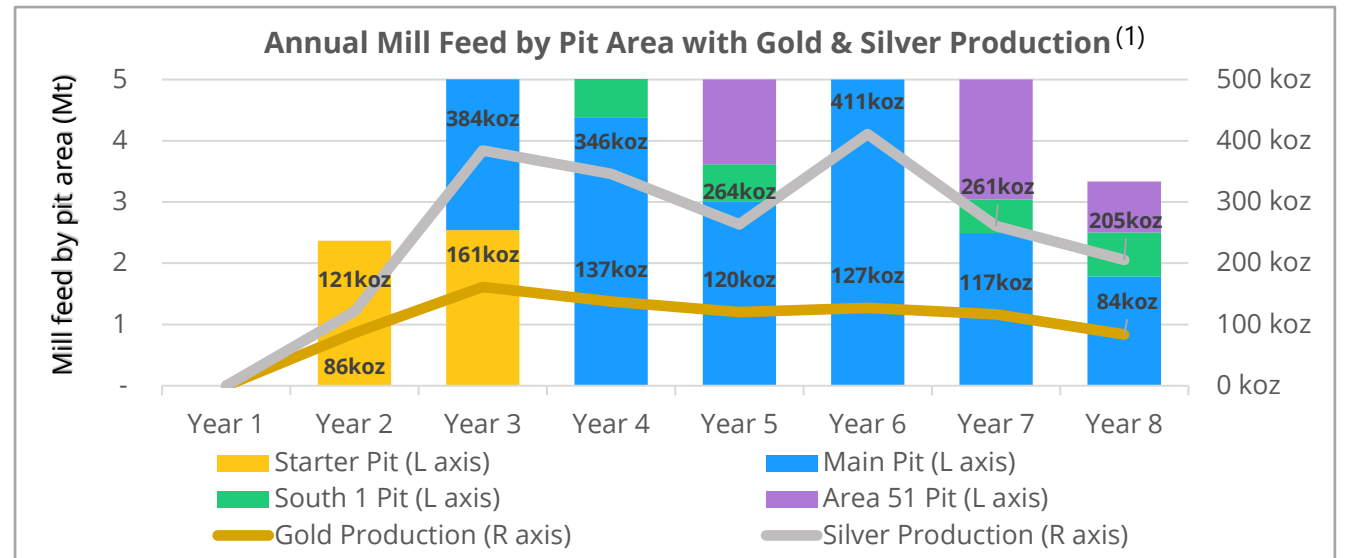
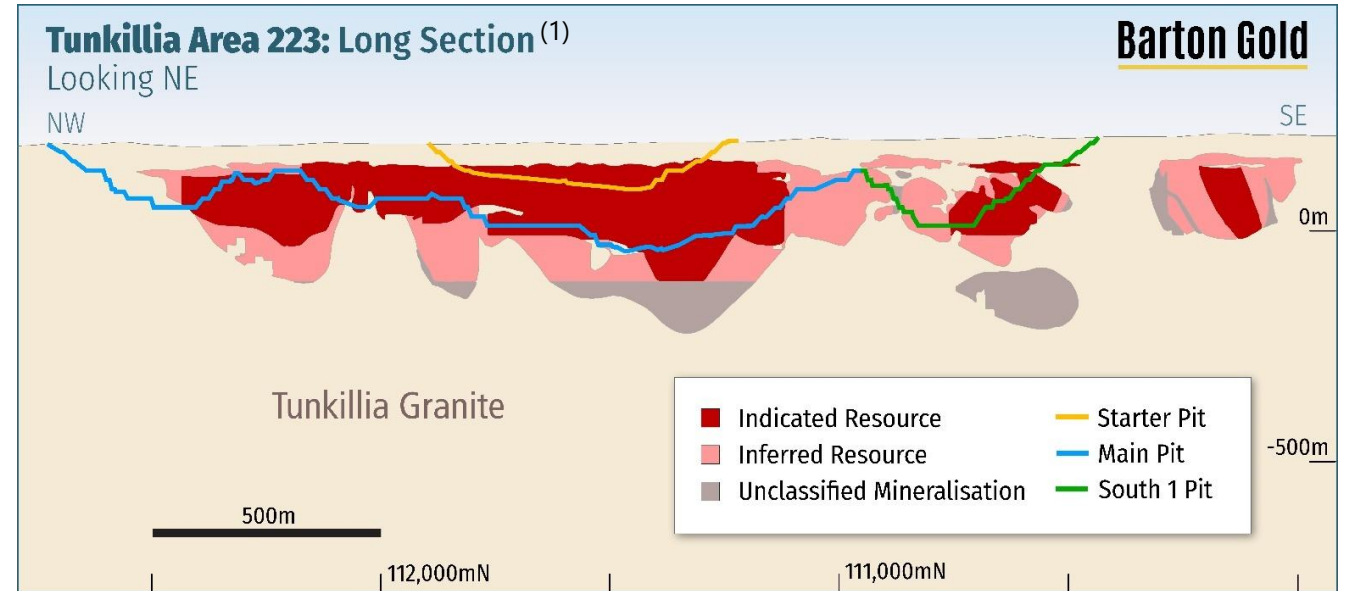
LoM extension opportunities,  
with high-value 'Starter' pit

## High-value 'Starter Pit': <sup>(1)</sup>

- First 18 months de-risks development plan
- 180koz @ A\$1,235/oz = A\$400m gross FCF

## Ongoing OSS analyses indicate:

- **Main mineralisation / pit depth extension**
- **Accelerated oxide throughput rate (softer)**



	Units	LoM Avg	'Starter' Pit
Mill throughput	Mtpa	5.0	4.9
Gold Grade	g/t Au	0.93	1.26
Silver Grade	g/t Ag	2.52	3.32
Payable Gold	oz	130,000	180,670
Payable Silver	oz	311,000	419,953
Revenue	A\$/oz Au	\$3,500	\$3,500
<b>Cash cost<sup>2</sup></b>	<b>A\$/oz Au</b>	<b>\$1,874</b>	<b>\$1,235</b>
<b>Cash margin<sup>2</sup></b>	<b>A\$/oz Au</b>	<b>\$1,626</b>	<b>\$2,265</b>

1 Refer to ASX announcement dated 16 July 2024

2 Excluding pre-strip, net of Ag by-product credit

# Tunkillia District Scale Potential

20km+ of untested strike  
on a major shear system



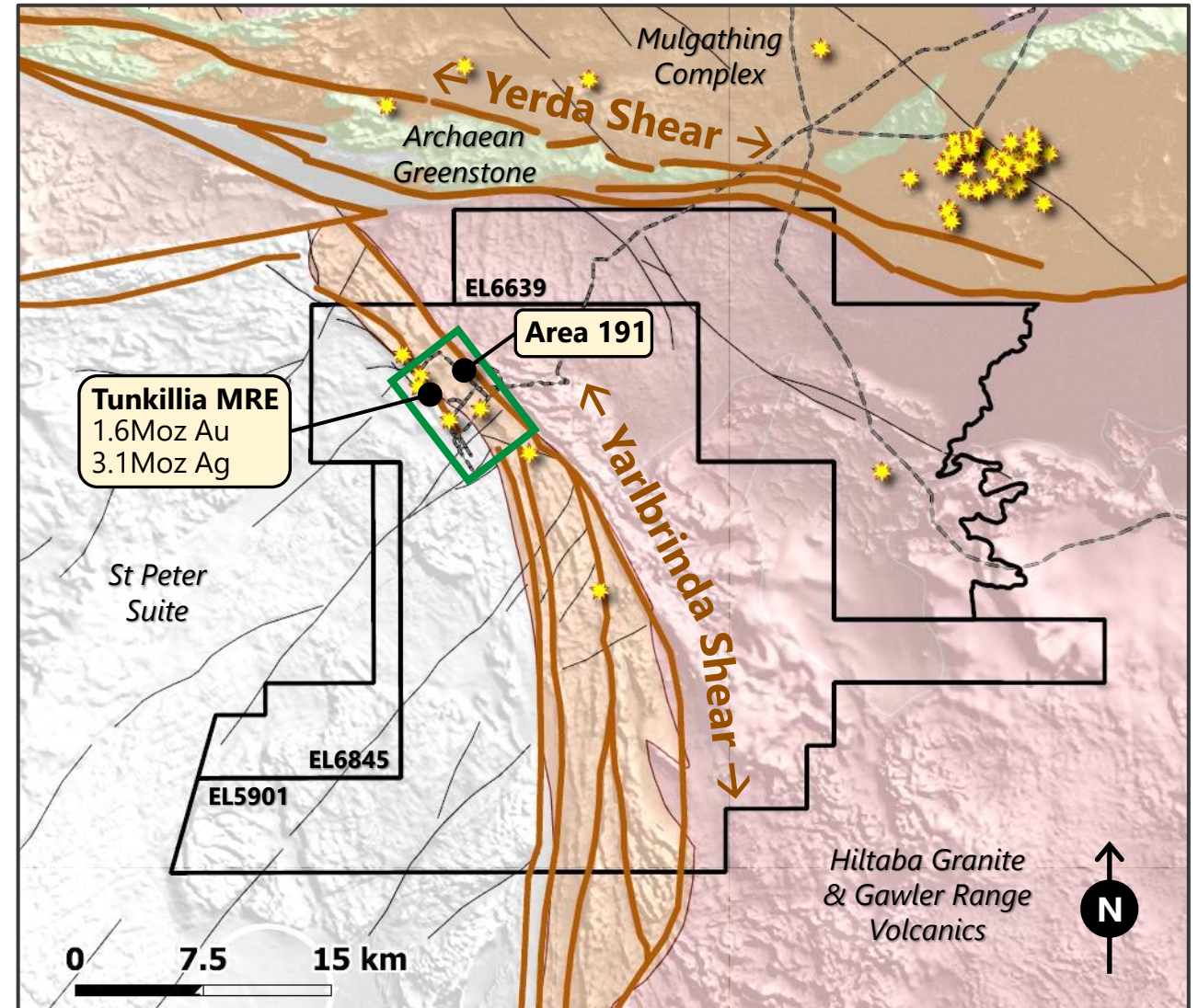
## District scale geology

- Major geological 'triple point' <sup>(1)</sup>
- Kms-wide Kalgoorlie style shear zone <sup>(2)</sup>
- Potential for significant fluid flows



## Early days: majority untested

- Current focus ~10% of shear margins
- Current Resources in ~5km cluster
- **Large-scale anomalies along strike**
- **+20km untested strike along shear**



1 Refer to ASX announcement dated 26 Apr 2023

2 Refer to Prospectus and ASX announcement dated 26 Apr 2023





# Tarcoola High-Grade History

Potential high-grade 'Stage 1' feed and future 'Stage 2' blend



## ML6455: the home of SA gold

- 1893 gold rush (~1893 – 1950) produced 77koz Au @ 37.5 g/t Au <sup>(1)</sup>
- Produced open pit ore @ ~3.8 g/t Au → Central Gawler Mill during 2018 <sup>(1)</sup>



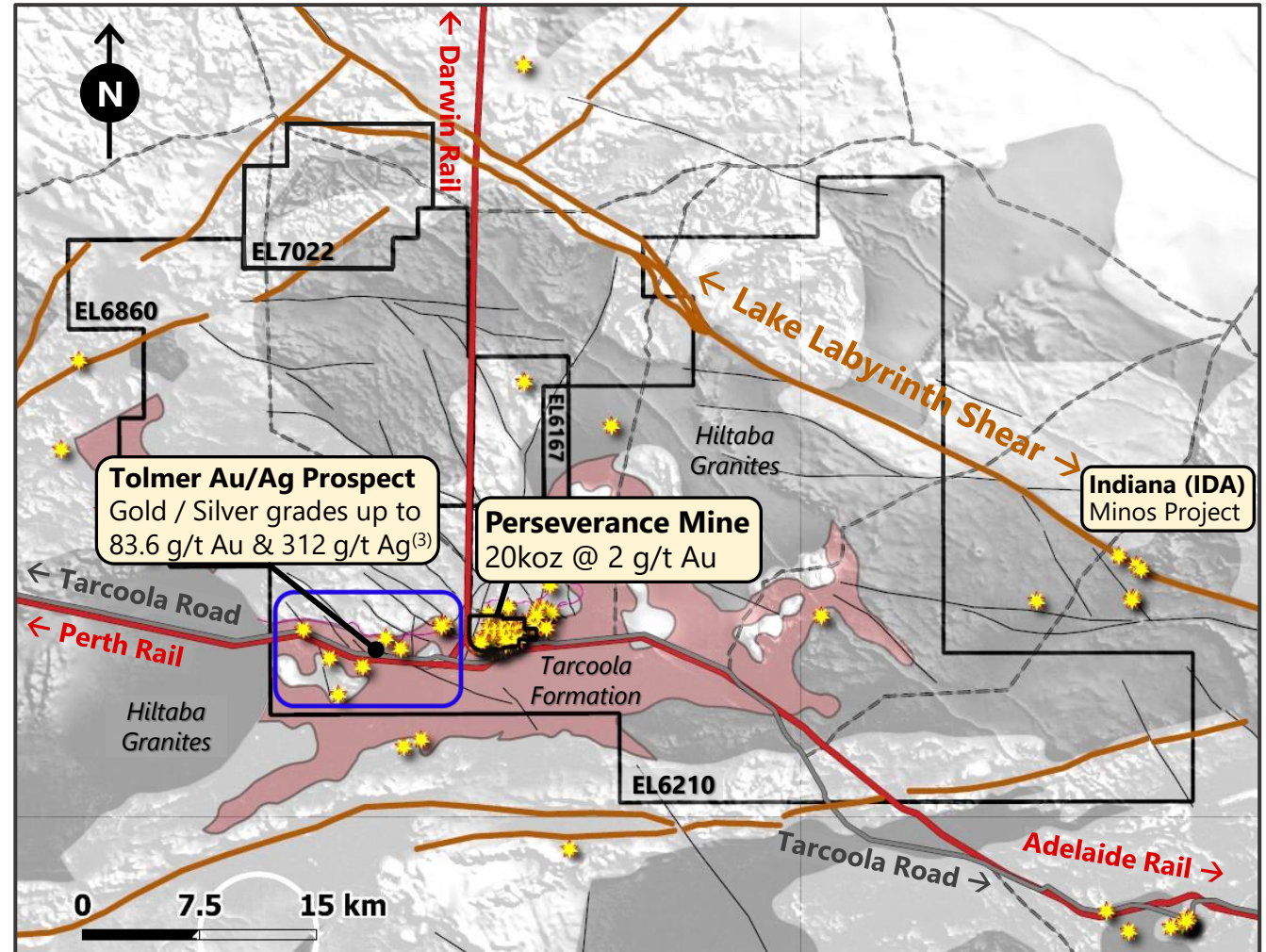
## Perseverance open pit mine

- Shallow open pit, fully permitted ML
- **20koz Au → 'Stage 1' feed option** <sup>(2)</sup>



## High-grade Tarcoola Goldfield

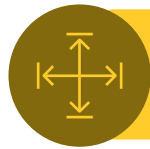
- Historically under-explored
- **New structural model developed**
- **New high-grade Au-Ag discovery** <sup>(3)</sup>



1 Refer to Prospectus

2 Refer to ASX announcement dated 3 July 2024

3 Refer to ASX announcement dated 27 August 2024 & 30 January 2025



# Tarcoola Perseverance Mine

Extensions = high-value ounces  
for existing fully permitted mill

## Fully permitted mine

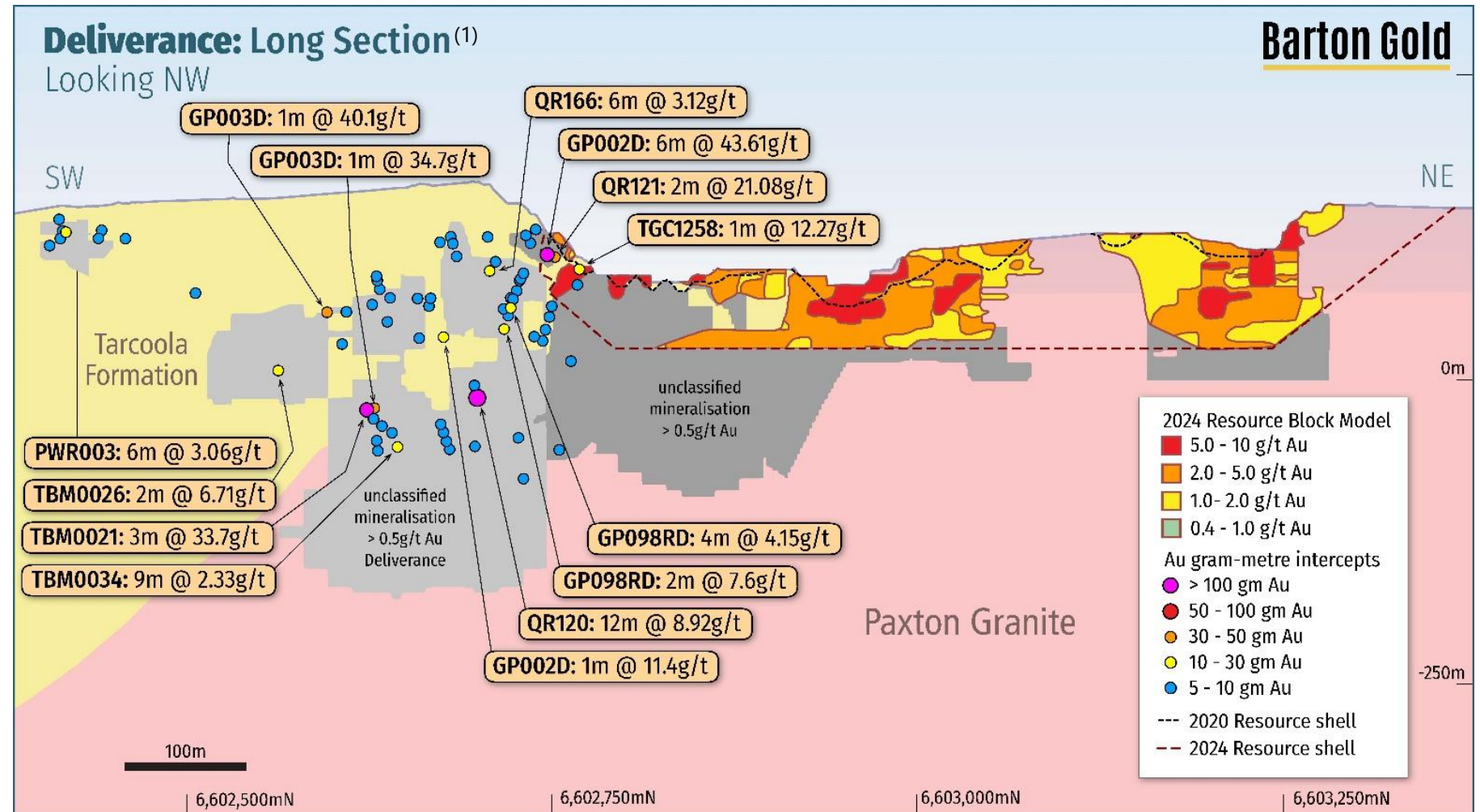
- Native Title approval and permits in place
- Operated 2017-2018

## High-value ounces <sup>(1)</sup>

- Pit floor: ~20koz Au
- Stockpile: ~10koz Au

## Extension potential <sup>(1)</sup>

- Grey areas modelled but not JORC classified
- **Recent drilling may convert additional open pit Resources**

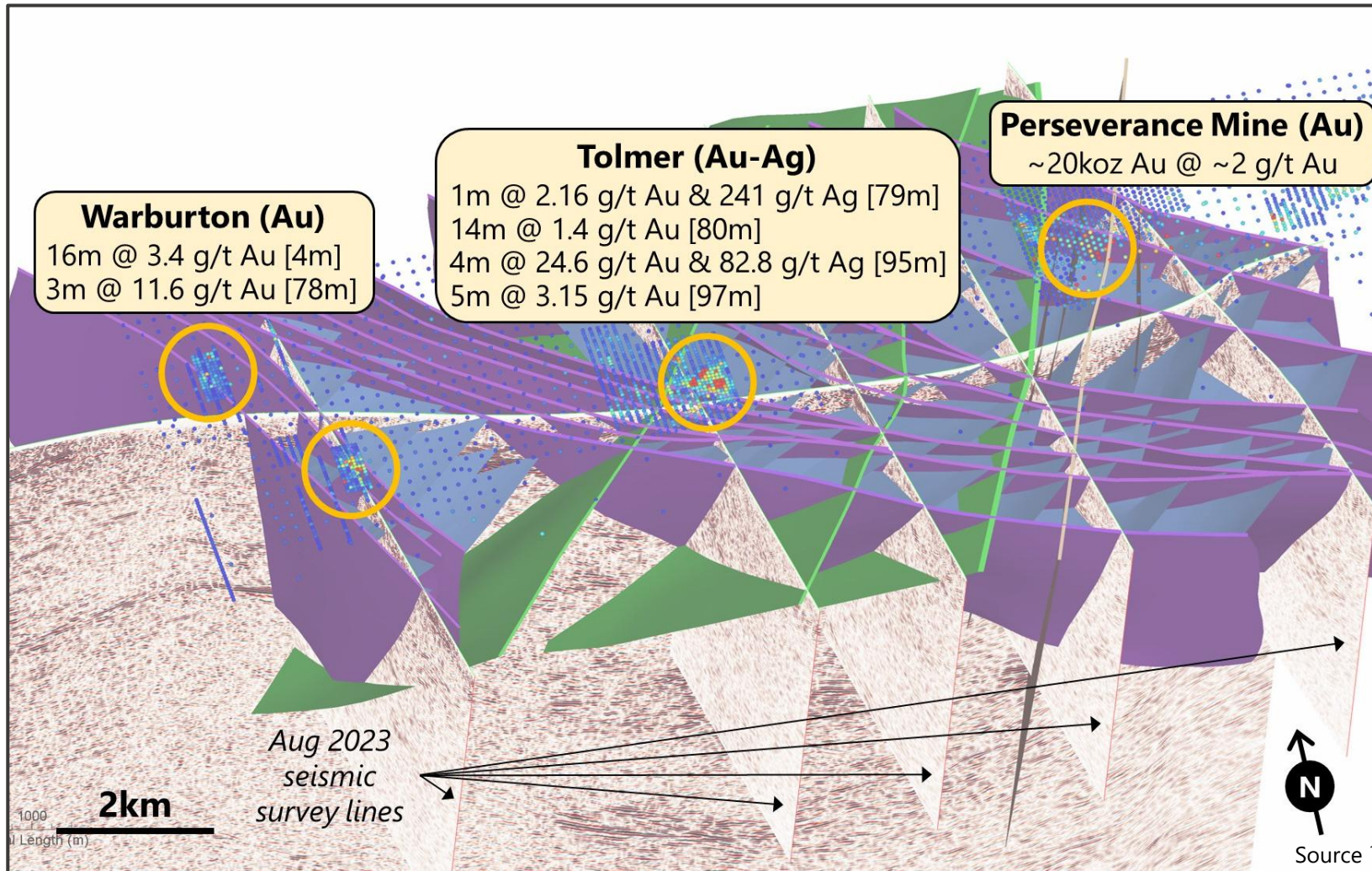


<sup>1</sup> Refer to ASX announcement dated 3 July 2024



# Tarcoola Emerging Platform

New model for historical high-grade goldfield → 1<sup>st</sup> discovery



New regional model (Nov 2023) <sup>(1)</sup>

Structures mapped under ~15km historical high-grade gold field

First time since 1893 that gold occurrences can be put into a consistent structural framework

### Significant opportunity:

- Previously unknown structures
- Identify mineralisation controls
- Confirm new mineralisation for 'Stage 1' / 'Stage 2' platforms

**Tolmer drilling confirms new gold-silver system with quartz veining in broader alteration** <sup>(1)</sup>

<sup>1</sup> Refer to Prospectus and ASX announcements dated 10 Mar and 28 Nov 2023, 3 July 2024, 27 August 2024 and 30 January 2025





# Key Targets

Consistent progress = pathway to S1 operations and staged growth

## Stage 1 | Central Gawler Mill

CY 2025

CY 2026

Restart options analyses



Engineering & Resource drilling



Commissioning & production



## Stage 2 | Tunkillia Project

Optimised Scoping Study



MLA studies (environmental)



Feasibility tender / studies



## Corporate | Commercialisation

Asset / platform monetisation



Technical alliances & partnerships



Project finance & agreements



- Continued focus on cost-efficient project studies and commercialisation
- Asset monetisation → \$12 million additional non-dilutive cash since IPO <sup>(1)</sup>

<sup>1</sup> Refer to ASX announcement dated 24 January 2025



Perseverance open pit mine





# Summary

Platform & performance → Value



**Strategic platform** includes fully-permitted infrastructure



**Advancing consistently** with near-term 'Stage 1' options



**Well capitalized** with fully aligned, experienced leadership



**Multiple catalysts** and frequent news



**Accessible** in AUD, USD and EUR on Australian, US and German markets



OTC

QB

BÖRSE  
FRANKFURT





# Barton Gold

## Contact



### **Barton Gold**

Level 4, 12 Gilles Street  
Adelaide SA 5000

[contact@bartongold.com.au](mailto:contact@bartongold.com.au)

[www.bartongold.com.au](http://www.bartongold.com.au)



### **Alexander Scanlon** Managing Director & CEO

[a.scanlon@bartongold.com.au](mailto:a.scanlon@bartongold.com.au)

+61 425 226 649



### **Jade Cook** Company Secretary

[cosec@bartongold.com.au](mailto:cosec@bartongold.com.au)

+61 8 9322 1587





# JORC (2012) Mineral Resources <sup>(1)</sup>

Gold JORC Resources		Zone	Indicated			Inferred			TOTAL		
			MT	g/t Au	koz Au	MT	g/t Au	koz Au	MT	g/t Au	koz Au
Tunkillia (100%)*											
Area 223	Oxide		0.73	1.09	26	0.53	0.72	12	1.26	0.93	38
	Transitional		3.13	1.07	108	3.70	0.77	92	6.83	0.91	200
	Fresh		25.6	0.89	733	20.7	0.72	479	46.3	0.81	1,212
			29.5	0.91	867	24.9	0.73	583	54.4	0.83	1,450
Area 51	Oxide		--	--	--	0.19	0.86	5	0.19	0.86	5
	Transitional		--	--	--	1.45	0.64	30	1.45	0.64	30
	Fresh		1.11	0.80	29	5.81	0.53	99	6.92	0.57	128
			1.11	0.80	29	7.45	0.56	134	8.55	0.59	163
	Total Tunkillia		30.6	0.91	896	32.4	0.69	717	62.9	0.80	1,612
Tarcoola (100%)*											
Perseverance Pit	Oxide		--	--	--	0.00	0.62	--	0.00	0.62	0
	Transitional		0.01	1.34	0	0.01	1.00	0	0.01	1.14	1
	Fresh		0.18	2.12	12	0.11	1.89	7	0.30	2.03	19
			0.19	2.10	13	0.12	1.83	7	0.31	1.99	20
Stockpiles	Oxides		--	--	--	0.17	1.20	7	0.17	1.20	7
	Fresh		--	--	--	0.06	1.40	3	0.06	1.40	3
			--	--	--	0.23	1.30	10	0.23	1.30	10
			0.19	2.10	13	0.35	1.48	17	0.54	1.70	30
Challenger (100%)*	Above 215 RL Fault		--	--	--	0.32	4.10	43	0.32	4.10	43
	Challenger Deeps (below 90m RL)		--	--	--	0.21	3.50	23	0.21	3.50	23
	Total Challenger		--	--	--	0.53	3.90	66	0.53	3.90	66
TOTAL			30.8	0.92	909	33.2	0.75	799	64.0	0.83	1,707

Silver JORC Resources		Zone	Indicated			Inferred			TOTAL		
			MT	g/t Ag	koz Ag	MT	g/t Ag	koz Ag	MT	g/t Ag	koz Ag
Tunkillia (100%)*											
Area 223	Oxide	--	--	--	1.24	1.10	40	1.24	1.10	40	
	Transitional	--	--	--	5.32	1.30	230	5.32	1.30	230	
	Fresh	--	--	--	28.0	3.10	2,800	28.0	3.10	2,800	
TOTAL			--	--	--	34.5	2.80	3,070	34.5	2.80	3,070

(1) Tables show complete JORC Mineral Resources Estimate (MRE) for each Project on a 100% basis.

Figures are subject to rounding, tonnages are dry-metric tonnes, and all Mineral Resources classified as 'Inferred' are approximate.

Gold cut-off grades applied are:

- 0.3 g/t Au (Tunkillia Area 223)
- 0.3 g/t Au (Tunkillia Area 51)
- 0.5 g/t Au (Tarcoola Perseverance)
- 0.4 g/t Au (Tarcoola Stockpiles)
- 2.0 g/t Au (Challenger)

Silver is considered as a by-product and is reported as a subset of the reported gold MRE, and has only been reported where the block model reports >0.3g/t Au.

Silver resources are reported only as Inferred resources independent of the block model classification for gold. Mineral Resources are reported using a gold price of A\$3,500 / ounce.

(1) Refer to Prospectus and ASX announcements dated 14 October 2021, 26 April 2023, 1 September 2023, 11 December 2023, 4 March 2024, 3 July 2024 and 4 March 2025 for further details of Barton's JORC (2012) Mineral Resources inventory.



# Competent Persons Statements

The information relating to Exploration Results and Mineral Resources in this presentation is extracted from the Company's Prospectus dated 14 May 2021 (Prospectus) and Barton ASX announcements as cross-referenced in the body of this presentation. A copy of the Prospectus is available for download at [www.bartongold.com.au](http://www.bartongold.com.au) or [www.asx.com.au](http://www.asx.com.au). Following publication of the Prospectus, the Company published details of updated Mineral Resource Estimates (including in respect of the Company's attributable ownership where a project is not wholly owned) on 14 October 2021 and 1 September 2023 (for the Western Gawler Craton Joint Venture Project, in which the Company no longer has any interest) and 26 April 2023, 11 December 2023, 4 March 2024 and 4 March 2025 (for the Tunkillia Project) and 3 July 2024 (for the Tarcoola Project). The Company confirms that the form and context in which the applicable Competent Persons' findings are presented have not been materially modified from the relevant market announcement. The Company confirms that it is not aware of any new information or data that materially affects the Exploration Results and Mineral Resource information included in previous announcements and, in the case of estimates of Mineral Resources, that all material assumptions and technical parameters underpinning the estimates in the previous announcements continue to apply and have not materially changed.

The Scoping Study referred to in this Presentation is a preliminary technical and economic study of Tunkillia's potential viability. It is based on low level technical and economic assessments insufficient to support the estimation of Ore Reserves. Further exploration and evaluation work and appropriate studies are required before Barton will be in a position to estimate any Ore Reserves or to provide any assurance of an economic development case. All material assumptions underpinning the production targets and forecast financial information derived from the production targets continue to apply and have not materially changed.

## Competent Persons (Tarcoola)

The information in this presentation that relates to the estimate of open pit Mineral Resources for the Tarcoola Gold Project is based upon, and fairly represents, information and supporting documentation compiled by Mr Ian Taylor BSc (Hons). Mr Taylor is an employee of Mining Associates Pty Ltd and has acted as an independent consultant on Barton Gold's Tarcoola Gold Project, South Australia. Mr Taylor is a Fellow and certified Professional of the Australian Institute of Mining and Metallurgy (FAusIMM (CP Geo) 110090) and has sufficient experience with the style of mineralisation, the deposit type under consideration and to the activity being undertaken, to qualify as a Competent Person as defined in the 2012 Edition of the "Australasian Code for Reporting of Exploration Results, Mineral Resources and Ore Reserves" (The JORC Code).

The information in this presentation that relates to the estimate of stockpile Mineral Resources for the Tarcoola Gold Project is based upon, and fairly represents, information and supporting documentation compiled by Dr Andrew Fowler MAusIMM CP (Geo). Dr Fowler is an employee of Mining Plus Pty Ltd and has acted as an independent consultant on Barton Gold's Tarcoola Gold Project, South Australia. Dr Fowler is a Member of the Australian Institute of Mining and Metallurgy (AusIMM) and has sufficient experience with the style of mineralisation, the deposit type under consideration and to the activity being undertaken, to qualify as a Competent Person as defined in the 2012 Edition of the "Australasian Code for Reporting of Exploration Results, Mineral Resources and Ore Reserves" (The JORC Code).

The information in this presentation that relates to Exploration Results for the Tarcoola Gold Project prior to 15 Nov 2021 (including drilling, sampling, geophysical surveys and geological interpretation) is based upon, and fairly represents, information and supporting documentation compiled by Mr Colin Skidmore BSc Hons (Geology) MAppSc. Mr Skidmore is an employee of Mining Plus Pty Ltd and has acted as an independent consultant on Barton Gold's Tarcoola Gold Project, South Australia. Mr Skidmore is a Member of the Australian Institute of Geoscientists (AIG Member 05415)) and has sufficient experience with the style of mineralisation, the deposit type under consideration and to the activity being undertaken, to qualify as a Competent Person as defined in the 2012 Edition of the "Australasian Code for Reporting of Exploration Results, Mineral Resources and Ore Reserves" (The JORC Code).

The information in this presentation that relates to new Exploration Results for the Tarcoola Gold Project after 15 Nov 2021 (including drilling, sampling, geophysical surveys and geological interpretation) is based upon, and fairly represents, information and supporting documentation compiled by Mr Marc Twining BSc Hons (Geology). Mr Twining is a full-time employee of Barton Gold Holdings Ltd, and is a Member of the Australasian Institute of Mining & Metallurgy (AusIMM Member 112811) and has sufficient experience with the style of mineralisation, the deposit types under consideration and to the activity being undertaken, to qualify as a Competent Person as defined in the 2012 Edition of the "Australasian Code for Reporting of Exploration Results, Mineral Resources and Ore Reserves" (The JORC Code).

## Competent Person (Tunkillia)

The information in this presentation that relates to the estimate of Mineral Resources for the Tunkillia Gold Project (including drilling, sampling, geophysical surveys and geological interpretation) is based upon, and fairly represents, information and supporting documentation compiled by Mr Ian Taylor BSc (Hons). Mr Taylor is an employee of Mining Associates Pty Ltd and has acted as an independent consultant on Barton Gold's Tunkillia Gold Project, South Australia. Mr Taylor is a Fellow and certified Professional of the Australian Institute of Mining and Metallurgy (110090) and has sufficient experience with the style of mineralisation, the deposit type under consideration and to the activity being undertaken, to qualify as a Competent Person as defined in the 2012 Edition of the "Australasian Code for Reporting of Exploration Results, Mineral Resources and Ore Reserves" (The JORC Code).

The information in this presentation that relates to Exploration Results for the Tunkillia Gold Project prior to 15 Nov 2021 (including drilling, sampling, geophysical surveys and geological interpretation) is based upon, and fairly represents, information and supporting documentation compiled by Mr Colin Skidmore BSc Hons (Geology) MAppSc. Mr Skidmore is an employee of Mining Plus Pty Ltd and has acted as an independent consultant on Barton Gold's Tunkillia Gold Project, South Australia. Mr Skidmore is a Member of the Australian Institute of Geoscientists (AIG Member 05415)) and has sufficient experience with the style of mineralisation, the deposit type under consideration and to the activity being undertaken, to qualify as a Competent Person as defined in the 2012 Edition of the "Australasian Code for Reporting of Exploration Results, Mineral Resources and Ore Reserves" (The JORC Code).

The information in this presentation that relates to new Exploration Results for the Tunkillia Gold Project after 15 Nov 2021 (including drilling, sampling, geophysical surveys and geological interpretation) is based upon, and fairly represents, information and supporting documentation compiled by Mr Marc Twining BSc Hons (Geology). Mr Twining is a full-time employee of Barton Gold Holdings Ltd, and is a Member of the Australasian Institute of Mining & Metallurgy (AusIMM Member 112811) and has sufficient experience with the style of mineralisation, the deposit types under consideration and to the activity being undertaken, to qualify as a Competent Person as defined in the 2012 Edition of the "Australasian Code for Reporting of Exploration Results, Mineral Resources and Ore Reserves" (The JORC Code).

## Competent Person (Challenger)

The information in this presentation that relates to the estimate of Mineral Resources for the Challenger Mine is based upon, and fairly represents, information and supporting documentation compiled by Mr Dale Sims, a Competent Person, who is a Chartered Professional Fellow of the Australasian Institute of Mining and Metallurgy (AusIMM) and a Member of the Australian Institute of Geoscientists (AIG). Mr Sims is the principal of Dale Sims Consulting Pty Ltd and an independent consultant engaged by Barton Gold for this work and has sufficient experience that is relevant to the style of mineralisation and type of deposit under consideration and to the activity being undertaken to qualify as Competent Person as defined in the 2012 edition of the "Australasian Code for Reporting of Exploration Results, Mineral Resources and Ore Reserves" (The JORC Code).