



## Kal East – Boundary Mining Commenced Ahead of Schedule

Black Cat Syndicate Limited (“**Black Cat**” or “**the Company**”) is pleased to provide an update on the More Gold, Sooner strategy at the 100% owned Kal East Gold Operation (“**Kal East**”).

### HIGHLIGHTS (All figures in A\$ unless otherwise stated)

- Mining at the Boundary open pit has commenced ahead of schedule with ground clearing complete and pre-strip of waste underway. The open pit is expected to have a 4 to 5 month life with the potential to extend via a cut back to the south.
- Ore from Myhree and Boundary will transition to Black Cat’s newly acquired 1.2Mtpa Lakewood processing facility (“**Lakewood**”), subject to Completion on 31 March 2025<sup>1</sup>.
- Open pit mining continues to progress safely and remains ahead of schedule:
  - Operations are forecast to be completed in October 2025, 3 months ahead of schedule.
  - Two dig fleets are operating between the pits with a 200t excavator pre-stripping waste at Boundary.
  - The Myhree strip ratio reduces from 19:1 (average to date) to 6:1 for the remainder of the pit, increasing margins.
  - ~140k tonnes of ROM stockpiles are currently on hand.
- Following recovery of start-up costs, the first \$30M of cashflow will be received by Black Cat. Thereafter, Black Cat will share profits with MMS<sup>2</sup>.



**Figure 1:** The Myhree/Boundary operation (looking north) with Myhree ROM ore stockpiles in the foreground.

Black Cat’s Managing Director, Gareth Solly, said: “*With the Lakewood acquisition, subject to Completion, we have accelerated mining at Boundary with ground clearing complete and pre-strip well underway.*”

*Overall material movements at Myhree are ~80% complete, while >55% of gold is still to be mined. We are now entering into the sweet spot and expect to see strong cashflow throughout the next two quarters. All part of our plan to produce more gold, sooner.”*

<sup>1</sup> BC8 ASX announcement 25/02/25

<sup>2</sup> BC8 ASX announcement 20/05/24



## Kal East – Boundary Mining Commenced Ahead of Schedule

### Boundary

Boundary topsoil stripping and pre-stripping are now underway in preparation for initial grade control drilling in March and April 2025.

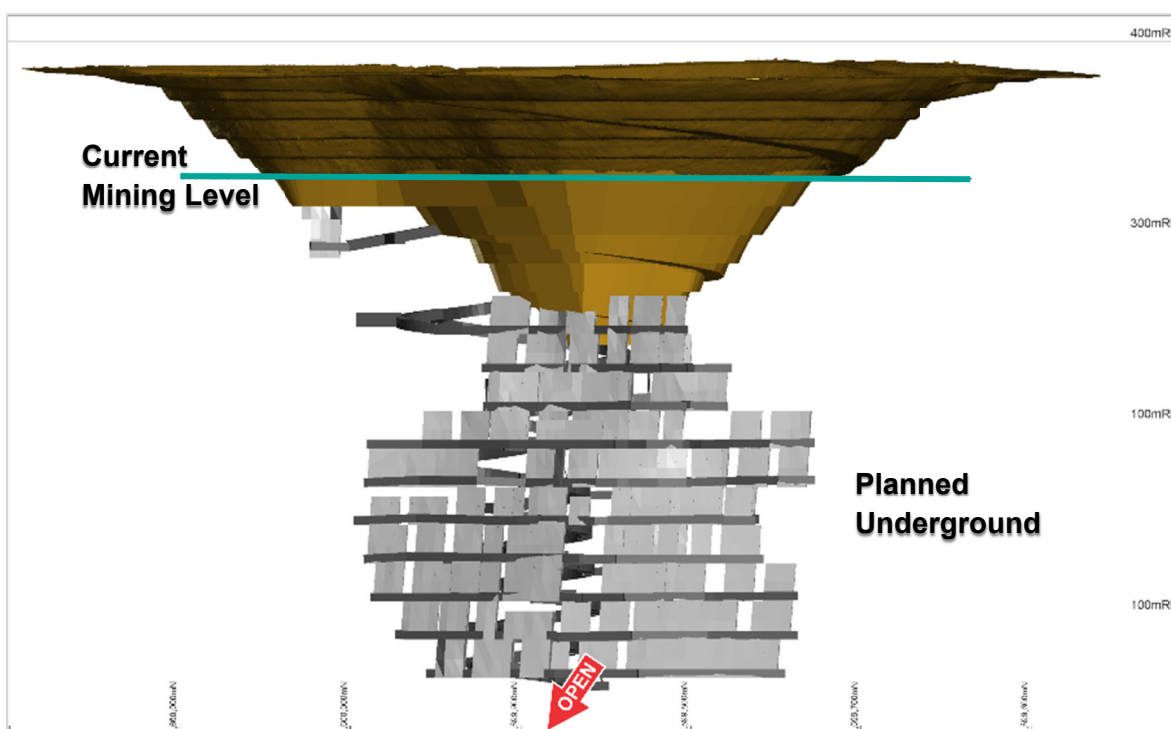


*Figure 2: Boundary waste stripping in the foreground, with Myhree in the background (to the south).*

### Myhree

Myhree has produced ~375kt out of the planned ~700kt of Ore. To date, ~4Mbcm of waste has been removed from the pit, with only ~0.8Mbcm remaining, a significant reduction in line with the decreasing footprint of the open pit at depth. The June and September 2025 quarters are expected to be strongly cashflow positive in line with a shrinking strip ratio.

Grades are also forecast to increase as the pit deepens and Ore becomes less oxidised. Ore stockpiles continue to grow ahead of haulage to Lakewood.



*Figure 3: Long section of Myhree showing the current position of mining within the designed pit. The planned underground is shown in grey.*

## Kal East – Boundary Mining Commenced Ahead of Schedule

---

### PLANNED ACTIVITIES

As at the date of this announcement, the proposed activities and timing for the Company over the coming months includes:

Ongoing	Underground drilling at Paulsens
Mar 2025	Commencement of mining activities at Kal East (dewatering, re-optimisations, approvals)
Mar 2025	Commencement of drilling activities at Kal East (Majestic, Fingals etc)
Mar - Oct 2025	Ongoing mining at Myhree/Boundary open pits
31 Mar 2025	Completion of Lakewood acquisition
Apr 2025 - Ongoing	Processing of Ore at Lakewood processing facility
10 Apr 2025	General Meeting

For further information, please contact:

Gareth Solly  
Managing Director  
+61 458 007 713  
[admin@bc8.com.au](mailto:admin@bc8.com.au)

This announcement has been approved for release by the Board of Black Cat Syndicate Limited.

# Kal East – Boundary Mining Commenced Ahead of Schedule

## ABOUT BLACK CAT SYNDICATE (ASX: BC8)

Black Cat is a gold producer with operating mines and processing facilities at two of its three 100% owned operations. Gold production occurs at:

**Paulsens:** comprises ~3,200km<sup>2</sup> of tenure located ~180km west of Paraburdoo in WA. Paulsens consists of an operational underground mine, 450ktpa processing facility, 128-person camp and other related infrastructure. Gold production restarted in December 2024 and will move to full production during 2025. Paulsens has a regional Resource of 4.3Mt @ 4.0g/t Au for 548koz and significant exploration and growth potential.

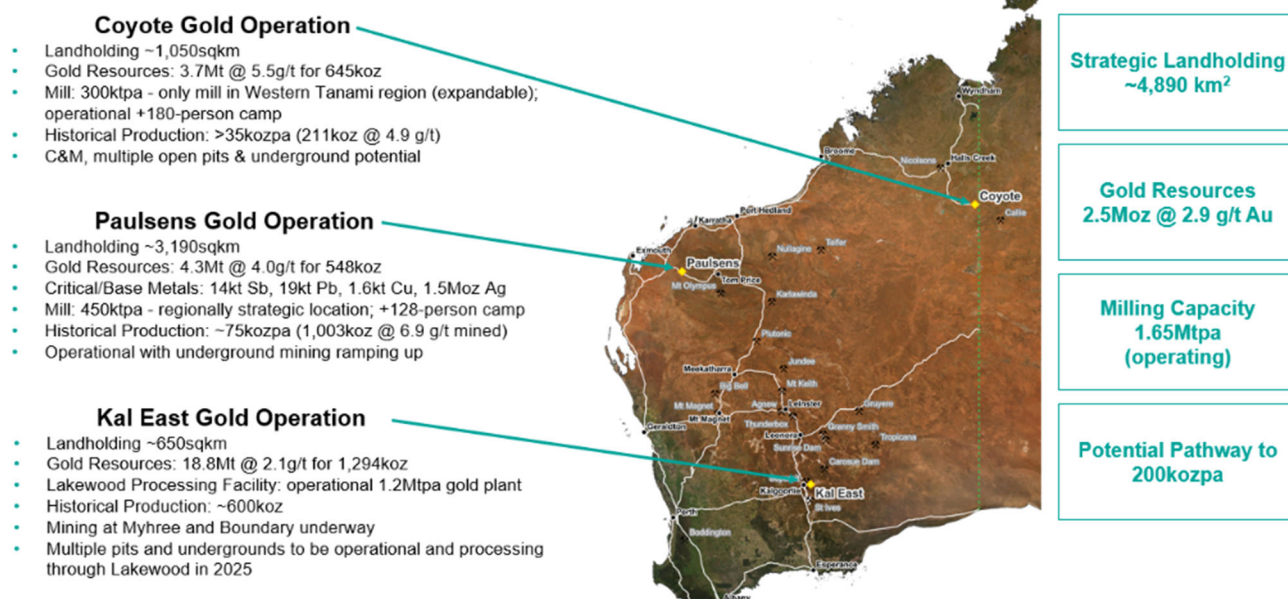
**Kal East:** comprises ~650km<sup>2</sup> of highly prospective ground to the east of the world class mining centre of Kalgoorlie, WA. Kal East contains a Resource of 18.8Mt @ 2.1g/t Au for 1,294koz, including a preliminary JORC 2012 Reserve of 3.7Mt @ 2.0 g/t Au for 243koz. A turn-key funding, development & processing arrangement to mine and mill the Myhree and Boundary open pit deposits is underway<sup>3</sup>.

Black Cat entered into a binding agreement in February 2025 to purchase the Lakewood Processing Facility, ~6km east of Kalgoorlie. The processing facility, a conventional CIL gold circuit with current throughput of 1.2Mtpa, will commence processing Black Cat's open pit and underground Ores during 2025.

In addition to the significant regional exploration potential at Paulsens and Kal East, the Company also has two major organic growth projects at:

**Coyote:** located in Northern Australia, ~20km on the WA side of the WA/NT border, on the Tanami Highway. Coyote has substantial built infrastructure including an airstrip, underground mine, 300ktpa processing facility, +180-person camp and other related infrastructure. The operation is currently on care and maintenance and has a Resource of 3.7Mt @ 5.5g/t Au for 645koz with numerous high-grade targets in the surrounding area.

**Mt Clement:** is part of the Paulsens Gold Operation and is located 30km to the south of the operating gold processing plant. Mt Clement is a polymetallic deposit and currently the 4<sup>th</sup> largest deposit in Australia of the critical mineral antimony. Significant upside potential for Resource growth and discovery of antimony, gold, silver and base metals exists at the project which will be aggressively explored in the coming years.



## COMPETENT PERSON'S STATEMENT

Where the Company refers to the exploration results, Mineral Resources, and Reserves in this report (referencing previous releases made to the ASX), it confirms that it is not aware of any new information or data that materially affects the information included in that announcement and all material assumptions and technical parameters underpinning the Mineral Resource and Reserve estimates with that announcement continue to apply and have not materially changed.

The Company confirms that all material assumptions underpinning the production targets, or the forecast information derived from the production targets, included in the original ASX announcements dated, 8 May 2024, 9 May 2024 and 15 May 2024 continue to apply and have not materially changed.

<sup>3</sup> BC8 ASX announcement 20/05/24

# Kal East – Boundary Mining Commenced Ahead of Schedule

## APPENDIX A - JORC 2012 GOLD RESOURCE TABLE - BLACK CAT (100% OWNED)

Mining Centre		Measured Resource			Indicated Resource			Inferred Resource			Total Resource		
		Tonnes ('000)	Grade (g/t Au)	Metal ('000 oz)	Tonnes ('000)	Grade (g/t Au)	Metal ('000 oz)	Tonnes ('000)	Grade (g/t Au)	Metal ('000 oz)	Tonnes ('000)	Grade (g/t Au)	Metal ('000 oz)
<b>Kal East</b>													
Bulong	Myhree/Boundary OP	-	-	-	903	2.7	78	300	1.8	17	1,203	2.5	95
	Myhree/Boundary UG	-	-	-	230	4.6	34	585	3.8	71	815	4.0	105
	Other Open Pits	-	-	-	97.5	2.5	7.8	1,079.40	1.8	61.8	1,176.80	1.8	69.6
	Other Underground	-	-	-	-	-	-	351.6	3.2	35.7	351.6	3.2	35.7
	Sub Total	-	-	-	1,230	3.0	120	2,316	2.5	185	3,546	2.7	305
Mt Monger	Open Pit	13	3.2	1	7,198	1.8	407	6,044	1.5	291	13,253	1.6	699
	Underground	-	-	-	1,178	4.5	169	710	4.6	104	1,888	4.5	274
	Sub Total	-	-	-	8,375	2.1	576	6,754	1.8	395	15,142	2.0	972
Rows Find	Open Pit	-	-	-	-	-	-	148	3.6	17	148	3.6	17
<b>Kal East Resource</b>		<b>13</b>	<b>3.2</b>	<b>1</b>	<b>9,605</b>	<b>2.3</b>	<b>696</b>	<b>9,219</b>	<b>2.0</b>	<b>597</b>	<b>18,836</b>	<b>2.1</b>	<b>1,294</b>
<b>Coyote Gold Operation</b>													
Coyote Central	Open Pit	-	-	-	608	2.8	55	203	3.0	19	811	2.9	75
	Underground	-	-	-	240	23.4	181	516	10.5	175	757	14.6	356
	Sub Total	-	-	-	849	8.7	236	719	8.4	194	1,568	8.5	430
Bald Hill	Open Pit	-	-	-	560	2.8	51	613	3.2	63	1,174	3.0	114
	Underground	-	-	-	34	2.7	3	513	5.0	82	547	4.8	84
	Sub Total	-	-	-	594	2.8	54	1,126	4.0	145	1,721	3.6	198
Stockpiles		-	-	-	375	1.4	17	-	-	-	375	1.4	17
<b>Coyote Resource</b>		<b>-</b>	<b>-</b>	<b>-</b>	<b>1,818</b>	<b>5.3</b>	<b>307</b>	<b>1,845</b>	<b>5.7</b>	<b>339</b>	<b>3,664</b>	<b>5.5</b>	<b>645</b>
<b>Paulsens Gold Operation</b>													
Paulsens	Underground	159	10.8	55	827	9.6	254	348	8.6	97	1,334	9.5	406
	Stockpile	11	1.6	1	-	-	-	-	-	-	11	1.6	1
	Sub Total	170	10.2	56	827	9.6	254	348	8.6	97	1,345	9.4	407
Mt Clement	Open Pit	-	-	-	-	-	-	1,249	1.5	61	1,249	1.5	61
	Underground	-	-	-	-	-	-	492	0.3	5	492	0.3	5
	Sub Total	-	-	-	-	-	-	1,741	1.2	66	1,741	1.2	66
Belvedere	Underground	-	-	-	95	5.9	18	44	8.3	12	139	6.6	30
Northern Anticline	Open Pit	-	-	-	-	-	-	523	1.4	24	523	1.4	24
Electric Dingo	Open Pit	-	-	-	98	1.6	5	444	1.2	17	542	1.3	22
<b>Paulsens Resource</b>		<b>170</b>	<b>10.2</b>	<b>56</b>	<b>1,019</b>	<b>8.4</b>	<b>277</b>	<b>3,100</b>	<b>2.2</b>	<b>216</b>	<b>4,289</b>	<b>4.0</b>	<b>548</b>
<b>TOTAL Resource</b>		<b>183</b>	<b>9.7</b>	<b>57</b>	<b>12,442</b>	<b>3.2</b>	<b>1,280</b>	<b>14,164</b>	<b>2.5</b>	<b>1,152</b>	<b>26,789</b>	<b>2.9</b>	<b>2,488</b>

### Notes on Resources:

- The preceding statements of Mineral Resources conforms to the 'Australasian Code for Reporting of Exploration Results Mineral Resources and Ore Reserves (JORC Code) 2012 Edition'.
- All tonnages reported are dry metric tonnes.
- Data is rounded to thousands of tonnes and thousands of ounces gold. Discrepancies in totals may occur due to rounding.
- Resources have been reported as both open pit and underground with varying cut-offs based off several factors discussed in the corresponding Table 1 which can be found with the original ASX announcements for each Resource.
- Resources are reported inclusive of any Reserves.
- Paulsens Inferred Resource includes Mt Clement Eastern Zone Au of 7koz @ 0.3g/t Au accounting for lower grades reported.

The announcements containing the Table 1 Checklists of Assessment and Reporting Criteria relating for the 2012 JORC compliant Resources are:

### Kal East Gold Project

- Boundary, Trump, Myhree – Black Cat ASX announcement on 9 October 2020 "Strong Resource Growth Continues including 53% Increase at Fingals Fortune"
- Strathfield – Black Cat ASX announcement on 31 March 2020 "Bulong Resource Jumps by 21% to 294,000 oz"
- Majestic – Black Cat ASX announcement on 25 January 2022 "Majestic Resource Growth and Works Approval Granted"
- Sovereign, Imperial – Black Cat ASX announcement on 11 March 2021 "1 Million Oz in Resource & New Gold Targets"
- Jones Find – Black Cat ASX announcement 04 March 2022 "Resource Growth Continues at Jones Find"
- Crown – Black Cat ASX announcement on 02 September 2021 "Maiden Resources Grow Kal East to 1.2Moz"
- Fingals Fortune – Black Cat ASX announcement on 23 November 2021 "Upgraded Resource Delivers More Gold at Fingals Fortune"
- Fingals East – Black Cat ASX announcement on 31 May 2021 "Strong Resource Growth Continues at Fingals".
- Trojan – Black Cat ASX announcement on 7 October 2020 "Black Cat Acquisition adds 115,000oz to the Fingals Gold Project".
- Queen Margaret, Melbourne United – Black Cat ASX announcement on 18 February 2019 "Robust Maiden Mineral Resource Estimate at Bulong"
- Anomaly 38 – Black Cat ASX announcement on 31 March 2020 "Bulong Resource Jumps by 21% to 294,000 oz"
- Wombola Dam – Black Cat ASX announcement on 28 May 2020 "Significant Increase in Resources - Strategic Transaction with Silver Lake"
- Hammer and Tap, Rowe's Find – Black Cat ASX announcement on 10 July 2020 "JORC 2004 Resources Converted to JORC 2012 Resources"

### Coyote Gold Operation

- Coyote OP&UG – Black Cat ASX announcement on 16 January 2022 "Coyote Underground Resource increases to 356koz @ 14.6g/t Au – One of the highest-grade deposits in Australia"
- Sandpiper OP&UG, Kookaburra OP, Pebbles OP, Stockpiles, SP (Coyote) – Black Cat ASX announcement on 25 May 2022 "Coyote & Paulsens High-Grade JORC Resources Confirmed"



# Kal East – Boundary Mining Commenced Ahead of Schedule

## Paulsens Gold Operation

- Paulsens UG – Black Cat ASX announcement on 31 October 2023 "24% Resource Increase, Paulsens Underground - 406koz @ 9.5g/t Au"
- Paulsens SP – Black Cat ASX announcement on 19 April 2022 "Funded Acquisition of Coyote & Paulsens Gold Operations - Supporting Documents"
- Belvedere UG – Black Cat ASX announcement on 21 November 2023 "Enhanced Restart Plan for Paulsens"
- Mt Clement – Black Cat ASX announcement on 24 November 2022 "High-Grade Au-Cu-Sb-Ag-Pb Resource at Paulsens"
- Merlin, Electric Dingo – Black Cat ASX announcement on 25 May 2022 "Coyote & Paulsens High-Grade JORC Resources Confirmed"

## APPENDIX B - JORC 2012 POLYMETALLIC RESOURCES - BLACK CAT (100% OWNED)

Deposit	Resource Category	Tonnes ('000 t)	Grade					Contained Metal				
			Au (g/t)	Cu (%)	Sb (%)	Ag (g/t)	Pb (%)	Au (koz)	Cu (kt)	Sb (kt)	Ag (koz)	Pb (kt)
Western	Inferred	415	-	0.4	0.2	76.9	-	*	1.6	0.7	1,026	-
	<b>Total</b>	<b>415</b>	-	<b>0.4</b>	<b>0.2</b>	<b>76.9</b>	-	<b>*</b>	<b>1.6</b>	<b>0.7</b>	<b>1,026</b>	-
Central	Inferred	532	-	-	-	-	-	*	-	-	-	-
	<b>Total</b>	<b>532</b>	-	-	-	-	-	<b>*</b>	-	-	-	-
Eastern	Inferred	794	-	-	1.7	17.0	2.4	*	-	13.2	434	18.7
	<b>Total</b>	<b>794</b>	-	-	<b>1.7</b>	<b>17.0</b>	<b>2.4</b>	<b>*</b>	-	<b>13.2</b>	<b>434</b>	<b>18.7</b>
<b>Total</b>		<b>1,741</b>	-	-	-	-	-	<b>*</b>	<b>1.6</b>	<b>13.9</b>	<b>1,460</b>	<b>18.7</b>

### Notes on Resources:

1. The preceding statements of Mineral Resources conforms to the 'Australasian Code for Reporting of Exploration Results Mineral Resources and Ore Reserves (JORC Code) 2012 Edition'.
2. All tonnages reported are dry metric tonnes.
3. Data is rounded to thousands of tonnes and thousands of ounces/tonnes for copper, antimony, silver, and lead. Discrepancies in totals may occur due to rounding.
4. Resources have been reported as both open pit and underground with varying cut-offs based off several factors discussed in the corresponding Table 1 which can be found with the original ASX announcements for each Resource.
5. Resources are reported inclusive of any Reserves.
6. Gold is reported in the previous table for Mt Clement, and so is not reported here. A total of 66koz of gold is contained within the Mt Clement Resource.

The announcements containing the Table 1 Checklists of Assessment and Reporting Criteria relating for the 2012 JORC compliant Reserves are:

### Paulsens Gold Operation

- Mt Clement – Black Cat ASX announcement on 24 November 2022 "High-Grade Au-Cu-Sb-Ag-Pb Resource at Paulsens"

## APPENDIX C - JORC 2012 GOLD RESERVE TABLE - BLACK CAT (100% OWNED)

	Proven Reserve			Probable Reserve			Total Reserve		
	Tonnes ('000s)	Grade (g/t Au)	Metal ('000s oz)	Tonnes ('000s)	Grade (g/t Au)	Metal ('000s oz)	Tonnes ('000s)	Grade (g/t Au)	Metal ('000s oz)
<b>Kal East</b>									
Myhree Open Pit	-	-	-	545	2.4	46	545	2.4	46
Boundary Open Pit	-	-	-	120	1.5	6	120	1.5	6
Other Open Pits	-	-	-	2,623	1.7	141	2,584	1.7	142
<b>Sub total Open Pits</b>	-	-	-	<b>3,288</b>	<b>1.8</b>	<b>193</b>	<b>3,288</b>	<b>1.8</b>	<b>193</b>
<b>Underground</b>	-	-	-	<b>437</b>	<b>3.6</b>	<b>50</b>	<b>437</b>	<b>3.6</b>	<b>50</b>
<b>Kal East Reserve</b>	-	-	-	<b>3,725</b>	<b>2.0</b>	<b>243</b>	<b>3,725</b>	<b>2.0</b>	<b>243</b>
<b>Paulsens Gold Operation</b>									
Underground	93	4.5	14	537	4.3	74	631	4.3	87
<b>Paulsens Reserve</b>	93	4.5	14	537	4.3	74	631	4.3	87
<b>TOTAL Reserves</b>	<b>93</b>	<b>4.5</b>	<b>14</b>	<b>4,262</b>	<b>2.3</b>	<b>317</b>	<b>4,356</b>	<b>2.4</b>	<b>330</b>

### Notes on Reserve:

1. The preceding statements of Mineral Reserves conforms to the 'Australasian Code for Reporting of Exploration Results Mineral Resources and Ore Reserves (JORC Code) 2012 Edition'.
2. All tonnages reported are dry metric tonnes.
3. Data is rounded to thousands of tonnes and thousands of ounces gold. Discrepancies in totals may occur due to rounding.
4. Cut-off Grade:
  - o Open Pit - The Ore Reserves are based upon an internal cut-off grade greater than or equal to the break-even cut-off grade.
  - o Underground - The Ore Reserves are based upon an internal cut-off grade greater than the break-even cut-off grade.
5. The commodity price used for the Revenue calculations for Kal East was AUD \$2,300 per ounce.
6. The commodity price used for the Revenue calculations for Paulsens was AUD \$2,500 per ounce.
7. The Ore Reserves are based upon a State Royalty of 2.5% and a refining charge of 0.2%.

The announcements containing the Table 1 Checklists of Assessment and Reporting Criteria relating for the 2012 JORC compliant Reserves are:

### Kal East Gold Project

- Black Cat ASX announcement on 03 June 2022 "Robust Base Case Production Plan of 302koz for Kal East"

### Paulsens Gold Operation

- Black Cat ASX announcement on 10 July 2023 "Robust Restart Plan for Paulsens"