

2 April 2025

Company Announcements Platform
ASX Limited
20 Bridge Street
SYDNEY NSW 2000

Dear Sir / Madam

Investor Presentation – April 2025

In accordance with Gold Road Resource Limited's Continuous Disclosure Policy, enclosed is a copy of the Investor Presentation – April 2025 which is being released to the ASX Market Announcements Platform.

This release has been authorised by the Managing Director & CEO.

Yours faithfully

Gold Road Resources Limited

Keely Woodward
Joint Company Secretary

.....
ASX Code GOR

.....
ABN 13 109 289 527
.....

COMPANY DIRECTORS

Tim Netscher

Chairman

Duncan Gibbs

Managing Director & CEO

Brian Levelt

Non-Executive Director

Maree Arnason

Non-Executive Director

Denise McComish

Non-Executive Director

Julie Jones

General Counsel &

Joint Company Secretary

Keely Woodward

Joint Company Secretary

.....
CONTACT DETAILS

Principal & Registered Office

Level 2, 26 Colin St

West Perth WA 6005

www.goldroad.com.au

perth@goldroad.com.au

T +61 8 9200 1600

F +61 8 6169 0784
.....



For further information, please visit www.goldroad.com.au or contact:

Gold Road Resources

Brian Massey

General Manager – Investor Relations & Corporate Development

InvestorRelations@goldroad.com.au

Tel: +61 8 9200 1600

Media Enquiries

Peter Klinger

Purple

pklinger@purple.au

Tel: +61 411 251 540



**GOLD
ROAD**
RESOURCES

AUSTRALIAN ROADSHOW

INVESTOR PRESENTATION | 02 APRIL 2025

DISCLAIMER IMPORTANT NOTICES

Nature of this document: The purpose of this presentation is to provide general information about Gold Road Resources Limited (the 'Company' or 'Gold Road' or 'GOR'). This document has been prepared by the Company and, unless otherwise stated herein, the information in this presentation is based on the Company's own information and estimates. In attending this presentation or viewing this document you agree to be bound by the following terms and conditions. Information in this document should be read in conjunction with other announcements made by the Company to the Australian Securities Exchange and available at www.goldroad.com.au or www.asx.com.

Not an offer: This presentation is for information purposes only and does not constitute or form any part of any offer or invitation to sell or issue, or any solicitation of any offer to purchase or subscribe for, any securities in the Company in any jurisdiction. This presentation and its contents must not be distributed, transmitted or viewed by any person in any jurisdiction where the distribution, transmission or viewing of this document would be unlawful under the securities or other laws of that or any other jurisdiction.

Not financial product advice: Information in this Presentation does not constitute financial product, legal, tax or investment advice and is not a recommendation to investors or potential investors in relation to holding, purchasing or selling securities in the Company. This presentation, and the information contained within, does not take into account the individual investment objectives, financial situation and particular needs of any recipient. You may wish to seek independent legal, financial and taxation advice before taking any action based on the information contained in this presentation. Neither the Company nor any of its related bodies corporate is licensed to provide financial product advice in respect of the Company's securities or any other financial products.

Forward-looking statements: Certain statements in the presentation are or may be "forward-looking statements" and represent the Company's intentions, projections, expectations or beliefs concerning, among other things, future operating and exploration results or the Company's future performance. The words "anticipate", "believe", "expect", "project", "forecast", "estimate", "likely", "intend", "outlook", "should", "could", "may", "target", "plan" and other similar expressions are intended to identify forward-looking statements. The projections, estimates and beliefs contained in such forward-looking statements necessarily involve known and unknown risks and uncertainties, and are necessarily based on assumptions, which may cause the Company's actual performance, results and achievements in future periods to differ materially from any express or implied estimates or projections. Accordingly, readers are cautioned not to place undue reliance on forward-looking statements. Relevant factors which may affect the Company's actual performance, results and achievements include changes in commodity price, foreign exchange fluctuations and general economic conditions, increased costs and demand for production inputs, the speculative nature of exploration and project development, diminishing quantities or grades of reserves, political and social risks, changes to laws and regulations, environmental conditions, and recruitment and retention of personnel.

Disclaimer: No representation or warranty, express or implied, is made by the Company that the material contained in this presentation will be achieved or prove to be correct. To the maximum extent permitted by, each of the Company, its directors, officers, employees, advisers and agents expressly disclaims any responsibility for the accuracy, fairness, sufficiency or completeness of the material contained in this presentation, or any opinions or beliefs contained in this document, and excludes all liability whatsoever (including in negligence) for any loss or damage which may be suffered by any person as a consequence of, or in connection with, any information in this presentation or any error or omission there from. The Company is under no obligation to update or keep current the information contained in this presentation or to correct any inaccuracy or omission which may become apparent, or to furnish any person with any further information. Any opinions expressed in the presentation are subject to change without notice.

DISCLAIMER IMPORTANT NOTICES

Listing Rules Compliance Statement: The information in this presentation that relates to:

1. Exploration Results for Gruyere Underground are extracted from the Company's ASX announcement entitled 'Gruyere Underground Initial Drilling Results' released to the ASX on 28 March 2025 which is available on the Company's website www.goldroad.com.au;
2. Mineral Resource and Ore Reserve estimates, production targets, and forecast financials for Gilmour are extracted from the Company's ASX announcement entitled 'Gilmour Gold Project PFS & Maiden Ore Reserve' released to the ASX on 20 January 2025 which is available on the Company's website www.goldroad.com.au;
3. Mineral Resource and Ore Reserve estimates for Gruyere Joint Venture are extracted from the Company's ASX announcement entitled '2024 Annual Mineral Resource and Ore Reserve Statement' released to the ASX on 23 January 2025 which is available on the Company's website www.goldroad.com.au;
4. Mineral Resource estimate for Gruyere underground is extracted from the Company's ASX announcement entitled 'Annual 2022 Mineral Resource and Ore Reserve Statement' released to the ASX on 31 January 2023 which is available on the Company's website www.goldroad.com.au,

and in each case, the Company confirms that it is not aware of any new information or data that materially affects the information included in the market announcements and that all material assumptions and technical parameters underpinning the Mineral Resource estimates and Ore Reserve estimates in the market announcements continue to apply and have not materially changed. The Company confirms that the form and context in which the competent persons' findings are presented have not been materially modified from the original market announcements.

Refer to the Appendices to this Presentation for the table of Ore Reserve estimates and Mineral Resource estimates.

Unverified information: This presentation may contain information (including information derived from publicly available sources) that has not been independently verified by the Company.

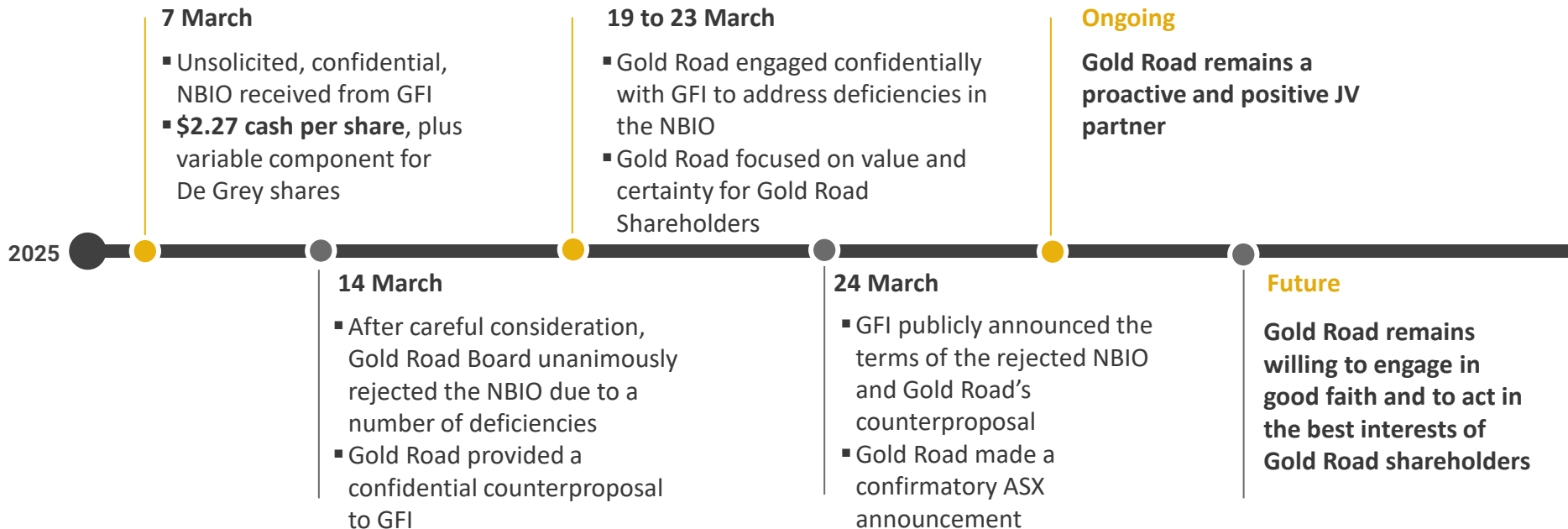
Non-IFRS Financial Information: The Company results are reported under International Financial Reporting Standards ('IFRS'). This presentation also includes non-IFRS information including EBITDA, free cash flow and underlying profit. The non-IFRS information has not been subject to audit or review by the Company's external auditors and recipients are cautioned not to place undue reliance on any non-IFRS financial measures included in this presentation.

Financial information: All financial information is expressed in Australian dollars (AUD, \$ or A\$) unless stated otherwise. A number of figures, amounts, percentages, estimates, calculations of value and fractions in the presentation are subject to the effect of rounding. Accordingly, the actual calculation of these figures may differ from the figures set out in this presentation.

Authorised release: This presentation has been approved for release by Duncan Gibbs, Managing Director & CEO.

Timeline of Engagement

The Gold Road Board unanimously determined that the proposal outlined in Gold Fields Limited's (GFI) Non-binding Indicative Offer (NBIO) was not in the best interests of Gold Road shareholders as it was opportunistic and undervalued Gold Road and rejected the NBIO



► Gold Road Position on GFI NBIO

GFI NBIO materially undervalues Gold Road and is highly opportunistic
GFI has not addressed deficiencies in its NBIO

Materially Undervalues Gold Road

- GOR provided a counterproposal at the price implied for Gruyere in the NBIO, this counterproposal was rejected by GFI
- **If the price is not good enough for GFI, why should it be good enough for Gold Road shareholders?**

Highly Opportunistic

- Timing of NBIO follows the under performance of Gruyere through March quarter
- Currently work underway on Gruyere Underground, a potentially considerable value driver

Gold Road Engaged with GFI to Address Deficiencies

- Gold Road engaged confidentially and in good faith with GFI in an attempt to address deficiencies prior to the public release of the rejected NBIO by GFI
- Floating value structure; timing and funding uncertainty of NBIO

Gold Road Portfolio

Portfolio focused on Sustainable Value Creation for Gold Road Shareholders

Gruyere Joint Venture (50%)	Gruyere OP and Golden Highway	<ul style="list-style-type: none">One of the largest Australian gold mine; Open pit reserve life until 2032⁵CY25 guidance: 325-355 koz; \$2,400-2,600/oz AISC⁵Gruyere Open Pit resource of 6.05 Moz Resource (100% basis)⁵Golden Highway resources of 0.96 Moz (100% basis)⁵, flexible start from 2027⁵
	Gruyere Underground	<ul style="list-style-type: none">Scoping study being finalised¹Underground Inferred resource of 1.79 Moz (50%)⁴18 month, 60,000m drill program, with 4-5 rigs underway¹Initial drill results confirm extension at depth¹
GFI Royalty & Yamarna (100%)	1.5% NSR Royalty	<ul style="list-style-type: none">Uncapped 1.5% NSR over GFI 50% share of Gruyere production⁷Expected to commence in 2026; Trigger = >2 Moz cumulative production⁷
	Yamarna Mine	<ul style="list-style-type: none">Gilmour PFS²: ~\$231-354 million NPV; 5yr life; ~50 kozpa; ~276 koz resource; with further infill and extension drilling; flexible start from ~2026²
Growth & Investment	Balance Sheet & Investments	<ul style="list-style-type: none">\$174 million¹⁰ cash and equivalents; Nil debt drawn; \$300 million debt facilities available; Unhedged⁸Consistent dividends paid. Franking credits of ~\$150 million¹⁰De Grey stake value of ~\$898 million³; significant shareholder value creation
	Exploration Portfolio	National Portfolio: Western Australia, South Australia, Queensland

¹ See ASX announcement dated 28 March 2025 "Gruyere Underground Initial Drilling Results"

² See ASX announcement dated 20 January 2025 "Gilmour Gold Project PFS & Maiden Ore Reserve" cautionary statement and forward-looking statement on pages 1, 2 and 10

³ Based on mark to market value of listed investments as at 28 March 2025

⁴ See ASX announcement dated 31 March 2023 "Annual 2022 Mineral Resource and Ore Reserve Statement"

⁵ See ASX announcement dated 28 January 2025 "Gruyere Guidance, Outlook and Growth"

⁶ See ASX announcement dated 23 January 2025 "2024 Annual Mineral Resource and Ore Reserve Statement"

⁷ See ASX announcements dated 7 November 2016 "Gruyere Gold Project to be developed in JV with Gold Fields" and 31 March 2025 "2024 Annual Report"

⁸ See ASX announcement dated 29 January 2025 "December 2024 Quarterly Report"

⁹ Cash & Equivalents (as at 31 December 2024) represents Cash, Bullion, and Doré

¹⁰ See ASX announcement dated 21 February 2025 "2024 Annual Financial Results"



World-Class Gold Mine & Strong Business



**Safe & Sustainable
Production**
LTIFR : ZERO¹



CY25 Guidance⁶:
325-355koz*
A\$2,400-2,600/oz AISC⁺



CY24 Free Cash Flow \$92M²
CY24 NPAT \$143M²
CY24 EBITDA \$294M²



Debt Free, Hedge Free
Cash & Equivalents \$174M³



H2 24 Dividend of 1.5cps
Dividend paid every half year
since 2020



Investment Portfolio
valued at \$909M⁴



Gilmour Maiden OR⁵
Gilmour PFS shows
Significant Value



Gruyere Underground⁶
Drilling Commenced

*100% basis. *Gold Road Attributable AISC

¹ Lost Time Injury Frequency Rate (LTIFR) over 12 months for Gold Road only

² See ASX announcement dated and 21 February 2025

³ Cash & Equivalents (as at 31 December 2024) represents Cash, Bullion, and Doré

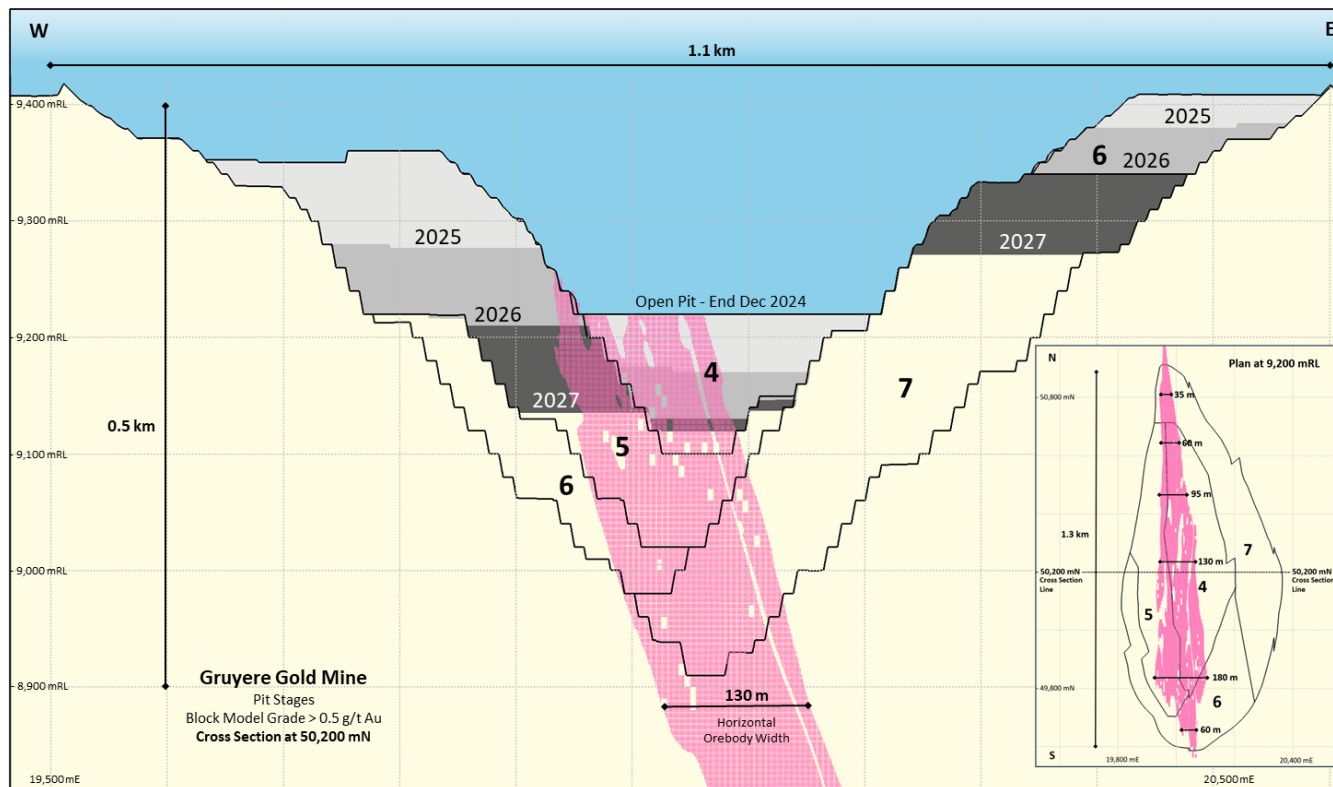
⁴ Listed Investments at Market value as at 28 March 2025 (ASX:DEG, YRL & ICL)

⁵ See ASX announcement 20 January 2025 and the cautionary statement and forward-looking statement on pages 1, 2 and 10 respectively of that announcement.

⁶ See ASX announcements 28 January 2025

Gruyere Open Pit 3-Year Outlook

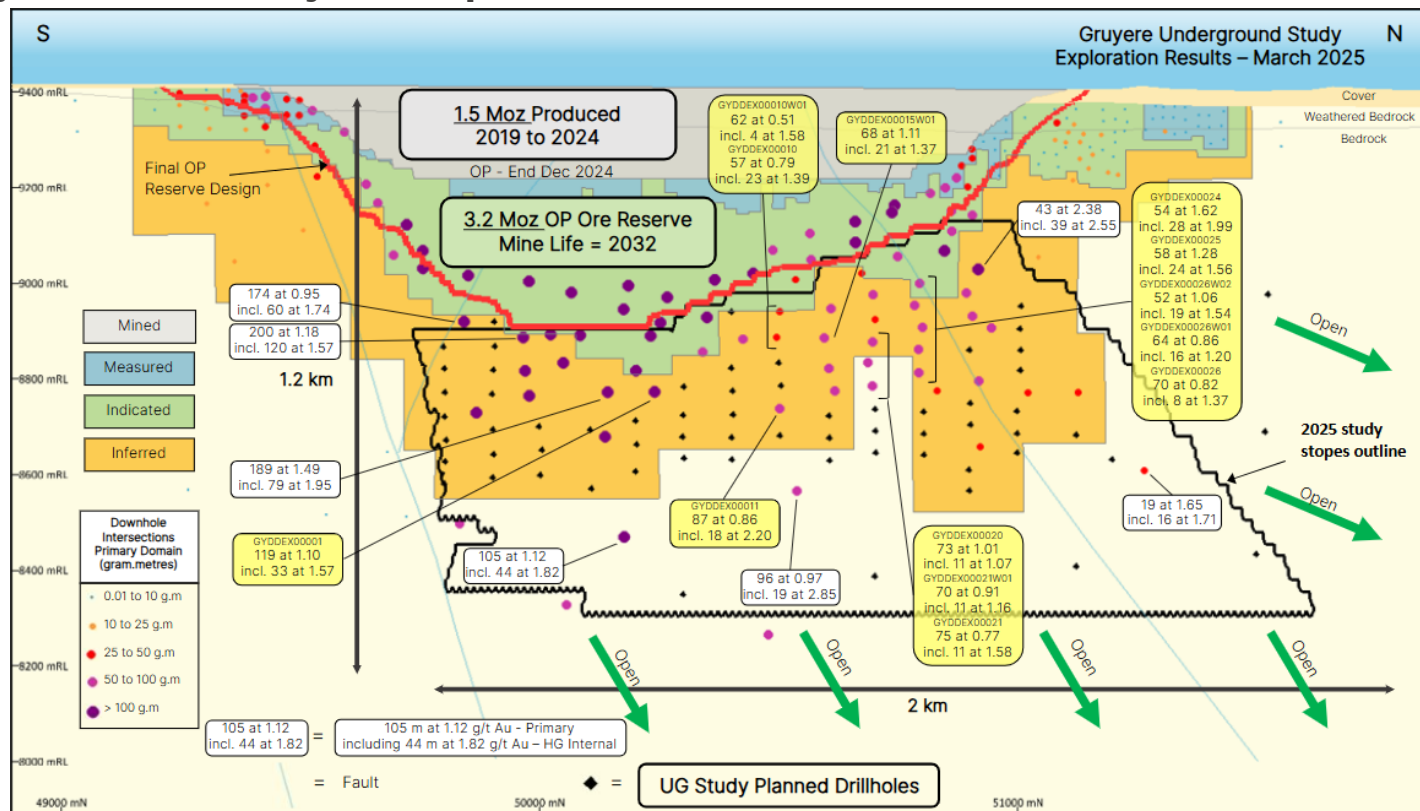
Increased Grade and Material Movements



See ASX announcement dated 28 January 2025 "Gruyere Guidance, Outlook and Growth" 100% basis unless otherwise stated. Gold Road operates to a calendar financial year. Refer to Gold Road's quarterly reports.

Gruyere Underground

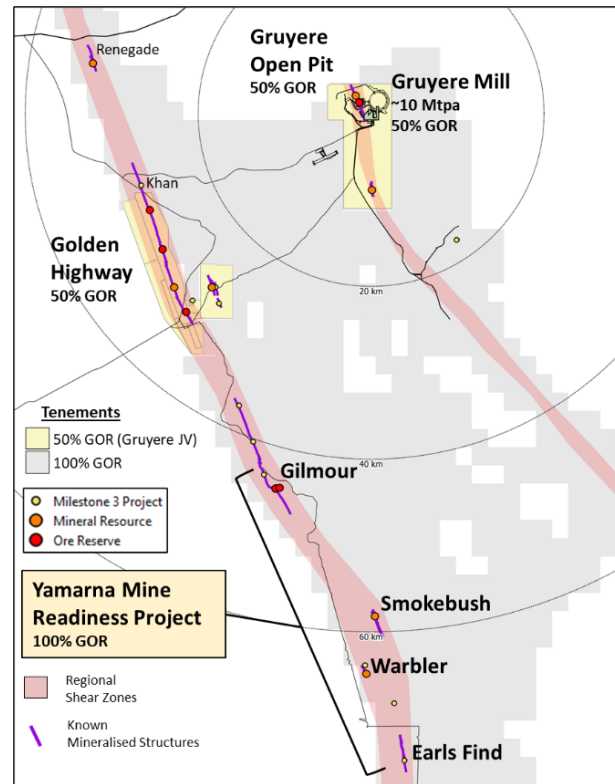
Initial drilling results confirm the quality, consistency and continuity of the Gruyere Ore Body at depth



Yamarna Mine Readiness Project

PFS and Maiden Ore Reserve in 100% owned asset adding significant potential value for Shareholders

- PFS demonstrates a 5-year project:
 - Life of mine free cash flow of **\$377 million¹**
 - NPV₅ of **\$231 million¹** at a gold price of A\$3,500/oz
 - ~50 koz pa at average AISC A\$2,004/oz
 - Establishment Capex of **\$36 million**
- **High-grade Ore Reserve of 0.19 Moz at 4.10 g/t Au**
- Infill and extension drilling planned for Q2 2025
- Targeting - shovel ready from late 2026



Location of Gruyere Mill in relation to Yamarna Mine Readiness Project

Growing Reserves & Resources

Attributable Growth after Mining Depletion of +5%



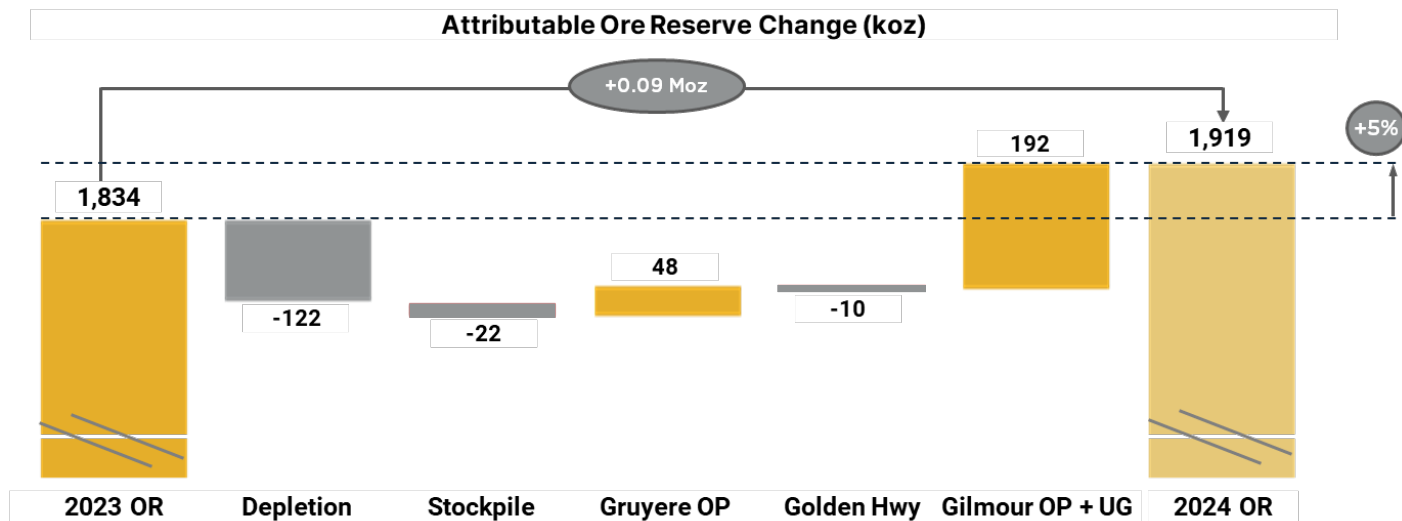
Ore Reserve Growth of +86 koz (+5%)

- Addition of Gilmour +192 koz
- Improvements and updates to Gruyere +48 koz¹



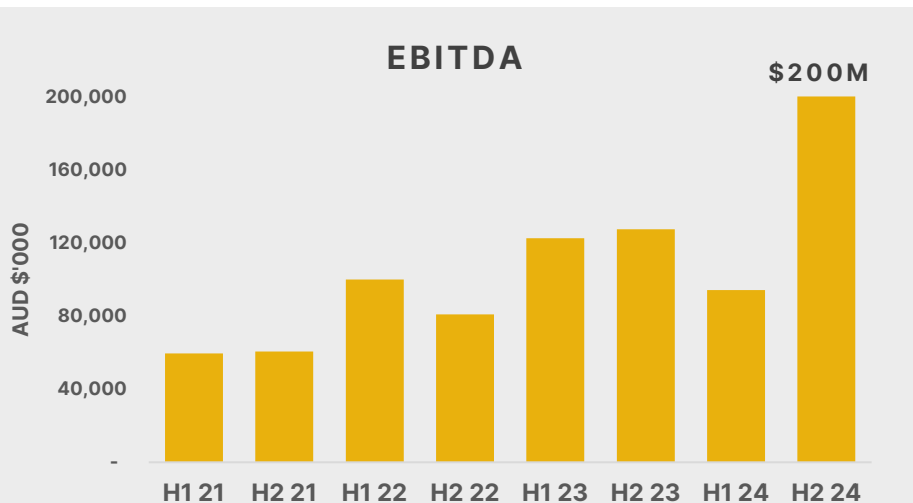
Resource Growth of +312 koz (+6%)

- Improvements and updates to Gruyere +561 koz²
- New drilling and updates to Golden Hwy +149 koz³

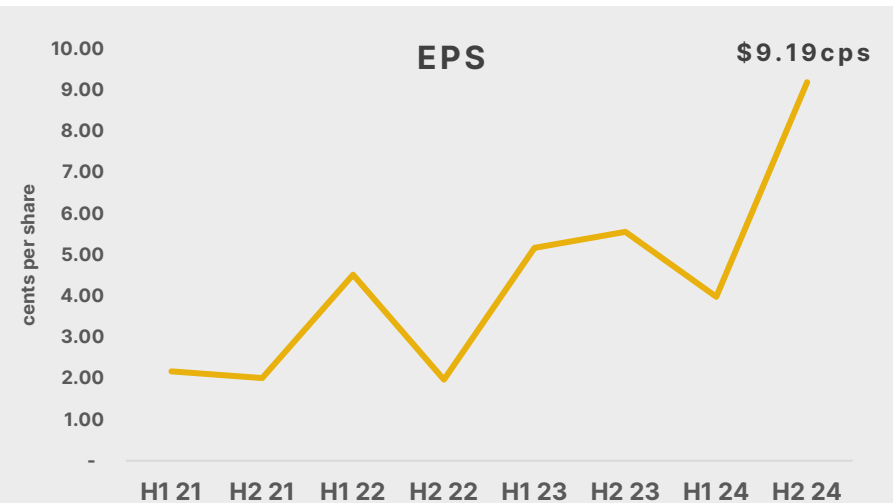


Record Earnings

Record Underlying and Shareholder Earnings for the H2 2024



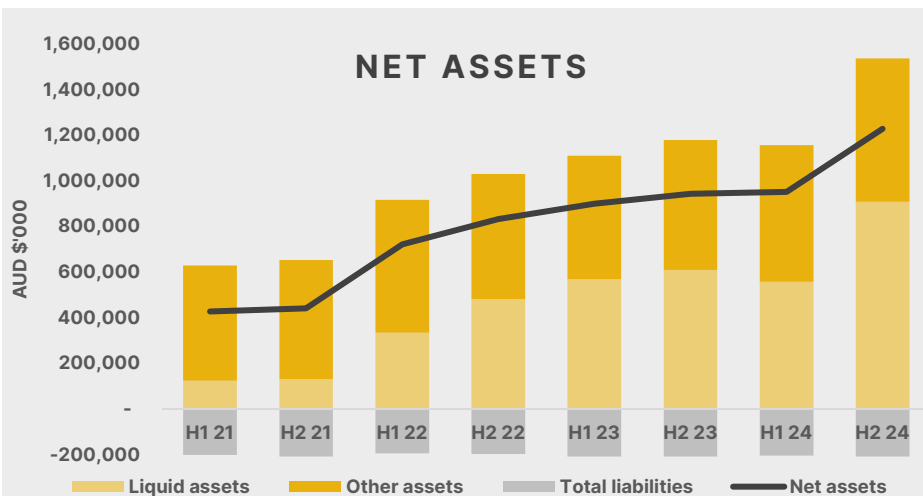
- Record half for **EBITDA** in H2 24 of **\$200M**
- Consistent strong growth with EBITDA growing by **145%** from 2021



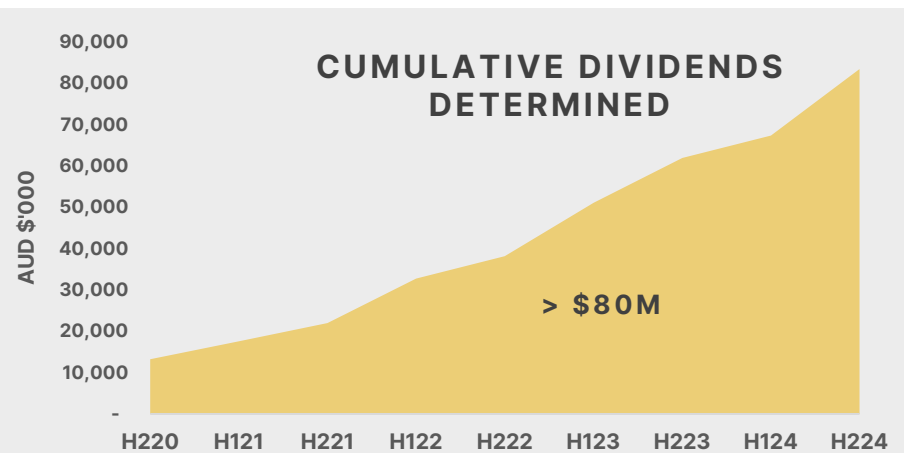
- All-time record **EPS** of over 9 cents in H2 24
- EPS has more than quadrupled over last four years

Capital Growth and Discipline

Strong Balance Sheet and Liquidity Underpins Shareholder Value



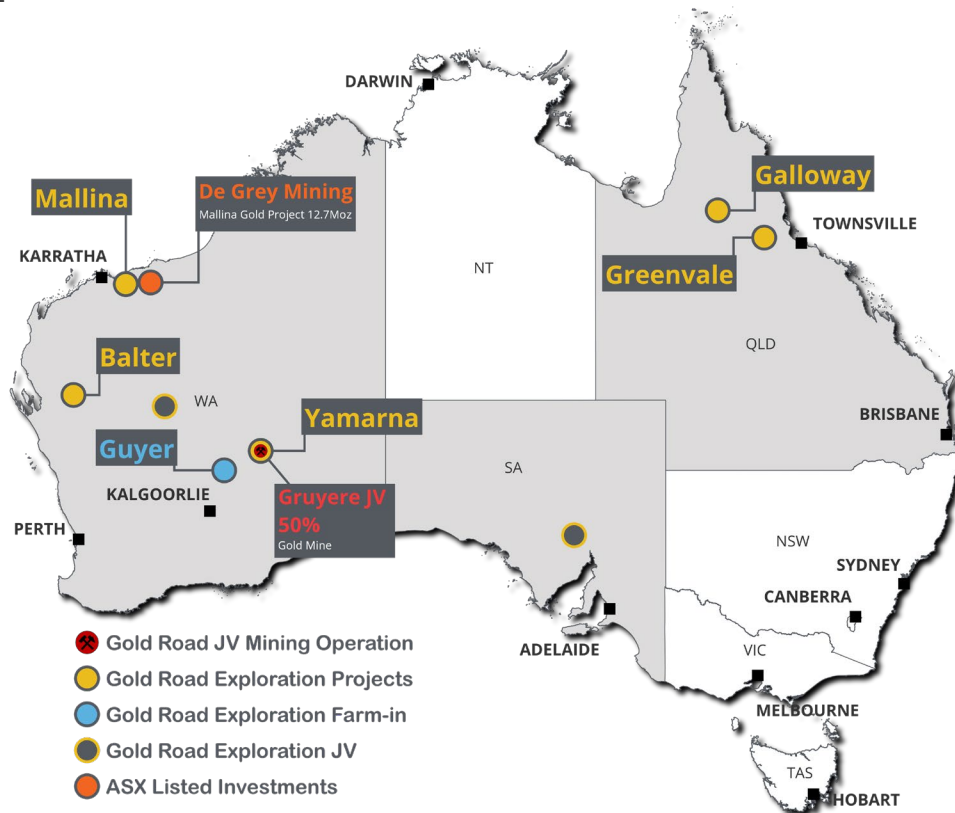
- Strong capital discipline
- Balance sheet strength **>\$800M** since 2020
- Driven by **growth in liquid assets** of cash, equivalents and investments of **\$782M** over last 4 years
- **Debt free**



- Dividend policy of 15-30% of free cash flow
- Consecutive franked dividends since launching in 2020
- 2024 dividends represent **24% of free cash flow**

National Exploration Portfolio

Diverse Prospective Portfolio across Australia



Corporate Profile

Board of Directors

Tim Netscher	Non-Executive Chairman (Independent)
Duncan Gibbs	Managing Director & CEO
Brian Levet	Non-Executive Director (Independent)
Maree Arnason	Non-Executive Director (Independent)
Denise McComish	Non-Executive Director (Independent)

Leadership Team

John Mullumby	Chief Financial Officer
Julie Jones	General Counsel & Company Secretary
Sharon Goddard	General Manager – Social Performance & External Relations
Jeff Dang	General Manager – Projects & Technical
Mark Lindsay	General Manager – Discovery
Jessica Logan	General Manager – People & Culture
Brian Massey	General Manager – IR & Corporate Development
Keely Woodward	Joint Company Secretary

¹ As at ASX close on 28 March 2025

² As reported for 6 January 2025

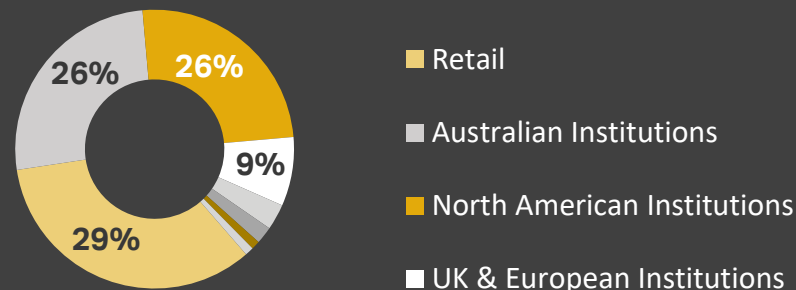
³ At Market Value on 28 March 2025



Capital Structure

	Market Cap	A\$3,180M ¹
	Cash & Equivalents	A\$174M ²
	Debt Drawn	nil
	Hedging	nil
	Liquid Investments	A\$909M ³

Shareholders



Analyst Coverage

Argonaut
Barrenjoey
Bell Potter
Canaccord

Jefferies
Macquarie
Ord Minnett
RBC

Moelis
Qvalue
BofAML
MST

Goldman Sachs
Euroz Hartleys
UBS
JP Morgan

▶ Delivering Shareholder Value

A Strong Business



Record Free Cash Flow of \$96M for H2 24
Cash and equivalents of \$174M¹
Debt Free, Hedge Free

Gruyere a World-Class Asset



CY25 Guidance: 325-355koz*
AISC: A\$2,400-2,600/oz⁺

Strong Growth Strategy



Underground studies and drilling at Gruyere
Gilmour PFS - \$231M NPV²
Investment portfolio market value of \$909M³
Prospective exploration portfolio
Golden Hwy Project

Shareholder Returns



Consistent dividend payer
Growth that delivers shareholder value

Appendices

Mineral Resource Table - Gruyere

31 December 2024

Project Name / Category	Gruyere Project Joint Venture - 100% basis			Gold Road Attributable		
	Tonnes (Mt)	Grade (g/t Au)	Contained Metal (Moz Au)	Tonnes (Mt)	Grade (g/t Au)	Contained Metal (Moz Au)
Gruyere JV Mineral Resources						
Gruyere OP Total	136.96	1.37	6.05	68.48	1.37	3.02
Measured	16.19	1.19	0.62	8.10	1.19	0.31
Indicated	81.13	1.38	3.59	40.56	1.38	1.79
Measured and Indicated	97.32	1.35	4.21	48.66	1.35	2.11
Inferred	39.64	1.44	1.84	19.82	1.44	0.92
Golden Highway + YAM14 OP Total	19.52	1.56	0.98	9.76	1.56	0.49
Indicated	15.87	1.58	0.80	7.94	1.58	0.40
Measured and Indicated	15.87	1.58	0.80	7.94	1.58	0.40
Inferred	3.65	1.49	0.17	1.83	1.49	0.09
Central Bore UG	0.47	7.64	0.12	0.24	7.64	0.06
Inferred	0.47	7.64	0.12	0.24	7.64	0.06
Total Gruyere JV	156.95	1.42	7.14	78.48	1.42	3.57
Measured	16.19	1.19	0.62	8.10	1.19	0.31
Indicated	97.00	1.41	4.39	48.50	1.41	2.20
Measured and Indicated	113.19	1.38	5.01	56.60	1.38	2.51
Inferred	43.76	1.51	2.13	21.88	1.51	1.06
Gruyere Underground Mineral Resource – Gold Road Attributable						
Gruyere UG						
Inferred				15.02	1.58	0.76
Total Gruyere Underground				15.02	1.58	0.76

Mineral Resource Table - Yamarna (Gold Road 100%)

31 December 2024

Project Name / Category	Gold Road Attributable		
	Tonnes (Mt)	Grade (g/t Au)	Contained Metal (Moz Au)
Renegade	1.86	1.13	0.07
Inferred	1.86	1.13	0.07
Gilmour OP	0.87	2.26	0.06
Indicated	0.71	2.50	0.06
Measured and Indicated	0.71	2.50	0.06
Inferred	0.16	1.19	0.01
Gilmour UG	0.83	7.99	0.21
Indicated	0.46	9.59	0.14
Measured and Indicated	0.46	9.59	0.14
Inferred	0.36	5.94	0.07
Smokebush	1.09	2.61	0.09
Inferred	1.09	2.61	0.09
Warbler	0.62	2.14	0.04
Inferred	0.62	2.14	0.04
Total Gold Road 100% Owned	5.27	2.82	0.48
Indicated	1.18	5.30	0.20
Measured and Indicated	1.18	5.30	0.20
Inferred	4.10	2.10	0.28
Total Gold Road Attributable (50% & 100% owned)	98.77	1.52	4.81
Measured	8.10	1.19	0.31
Indicated	49.68	1.50	2.40
Measured and Indicated	57.77	1.46	2.71
Inferred	41.00	1.60	2.10

Ore Reserve Table – Gruyere JV & Gold Road Attributable

31 December 2024

Project Name / Category	Gruyere Project Joint Venture – 100% Basis			Gold Road Attributable		
	Tonnes (Mt)	Grade (g/t Au)	Contained Metal (Moz Au)	Tonnes (Mt)	Grade (g/t Au)	Contained Metal (Moz Au)
Gruyere JV Ore Reserves						
Gruyere OP Total	76.72	1.29	3.19	38.36	1.29	1.59
Proved	16.21	1.16	0.60	8.10	1.16	0.30
Probable	60.51	1.33	2.58	30.26	1.33	1.29
Golden Highway Total	6.55	1.28	0.27	3.27	1.28	0.13
Probable	6.55	1.28	0.27	3.27	1.28	0.13
Total Gruyere JV	83.27	1.29	3.45	41.63	1.29	1.73
Proved	16.21	1.16	0.60	8.10	1.16	0.30
Probable	67.06	1.32	2.85	33.53	1.32	1.43
Gold Road Yamarna 100% Ore Reserves						
Gilmour OP Total				0.82	2.18	0.06
Probable				0.82	2.18	0.06
Gilmour UG Total				0.64	6.57	0.13
Probable				0.64	6.57	0.13
Total Gilmour OP + UG				1.45	4.10	0.19
Probable				1.45	4.10	0.19
Gold Road Attributable Ore Reserves						
Total Gold Road Attributable				43.09	1.39	1.92
Measured				8.10	1.16	0.30
Indicated				34.98	1.44	1.62

Notes:

- The Gruyere JV is a 50:50 joint venture between Gold Road and Gruyere Mining Company Pty Limited, a wholly owned Australian subsidiary of Gold Fields Ltd. Figures are reported on a 100% basis unless otherwise specified, 50% is attributable to Gold Road.
- Gold Road holds an uncapped 1.5% net smelter return royalty on Gold Fields' share of production from the Gruyere JV once total gold production exceeds 2 million ounces.

Mineral Resource & Ore Reserve Notes

31 December 2024

Mineral Resource Notes:

- OP = Open Pit and UG = Underground
- All Mineral Resources are completed in accordance with the JORC Code 2012 Edition. All figures are rounded to reflect appropriate levels of confidence. Apparent differences may occur due to rounding. Mineral Resources are inclusive of Ore Reserves and depleted for mining. Gruyere Measured category includes Surface Stockpiles (2.91 Mt at 0.87 g/t Au for 0.08 Moz)
- All Mineral Resources are constrained by optimised shapes to determine the portion of the total mineralised inventory within the resource model that has a reasonable prospect of eventual economic extraction. Open pits have no allowance for ramps, dilution or mining recovery. Undergrounds include a minimum mining width and are reported as diluted tonnage and grade with no allowance for pillars or mining recovery. Cut-off grades allow for mining, haulage and processing costs and metallurgical recovery based on operational, FS, PFS and/or benchmark study data
- Underground Mineral Resources are reported with diluted tonnages and grades based on minimum stope widths.

Deposit	Modify Factors / Units		
	Gold Price	Cut-off Grade	Minimum Mining Width
	A\$ per ounce	g/t Au	Metres
Gruyere OP	2,600	0.44 – oxide 0.44 – trans 0.47 - fresh	5.0
Attila OP	2,600	0.56 – oxide 0.56 – trans 0.58 - fresh	2.0 downhole
Orleans OP	2,600	0.52 – oxide 0.52 – trans 0.58 - fresh	2.0 downhole
Montagne OP	2,600	0.51 – oxide 0.51 – trans 0.56 - fresh	2.0 downhole
Alaric OP	2,600	0.58 – oxide 0.58 – trans 0.59 - fresh	2.0 downhole
YAM14 OP	2,600	0.5	2.0 downhole
Central Bore UG	2,600	2.5	2.0
Gruyere UG	2,600	1.0 - Central Zone 1.5 - Northern Zone	25 - Central Zone 5 - Northern Zone
Renegade OP	2,200	0.5	2.0 downhole
Gilmour OP	2,600	0.5	2.0 downhole
Gilmour UG	2,600	2.5	2.5
Smokebush OP	2,200	0.5	2.0 downhole
Warbler OP	2,200	0.5	2.0 downhole

Ore Reserve Notes:

- OP = Open Pit and UG = Underground
- All Ore Reserves are completed in accordance with the 2012 JORC Code Edition. All figures are rounded to reflect appropriate levels of confidence. Apparent differences may occur due to rounding. Ore Reserves are depleted for mining. Gruyere Proved category includes Surface Stockpiles (2.91 Mt at 0.87 g/t Au for 0.08 Moz)
- Ore Reserves are reported above cut-off grades and constrained within detailed mine designs derived from mining (including dilution and mining recovery), haulage and processing costs and metallurgical recovery and geotechnical parameters as defined by operational, FS and/or PFS study data.

Deposit	Modify Factors / Units				
	Gold Price	Cut-off Grade	Minimum Mining Width	Dilution (Planned & Unplanned)	Mining Recovery
	A\$ per ounce	g/t Au	Metres	%	%
Gruyere OP	2,250	0.50 - oxide 0.50 - trans 0.54 - fresh	5.0	5%	97%
Attila OP	2,250	0.64 - oxide 0.64 - trans 0.67 - fresh	5.0	25%	90%
Montagne OP	2,250	0.59 - oxide 0.59 - trans 0.65 - fresh	5.0	25%	83%
Alaric OP	2,250	0.66 - oxide 0.67 - trans 0.69 - fresh	5.0	57%	65%
Gilmour OP	2,250	0.6	2.5	16%	99%
Gilmour UG	2,250	3.0	2.5	33%	95%

► Gruyere Joint Venture Key Terms

Participants	<ul style="list-style-type: none">▪ Gold Road (50%) and Gold Fields (50%)▪ Gold Fields manager of Gruyere operations▪ Standstill prevents Gold Fields from purchasing more than 10% of Gold Road equity and requires notification to GOR prior to purchase
Structure	<ul style="list-style-type: none">▪ Unincorporated JV▪ Each party receives 50% of gold production to sell on market or deliver into hedges.▪ Cash calls made by manager monthly
Management Committee and Technical Subcommittee	<ul style="list-style-type: none">▪ Management Committee: Each party is entitled to appoint 3 members to the management committee and Chair rotates annually. Meets quarterly.▪ Unanimous decisions required▪ Gruyere Technical Committee meets monthly with 3 members from each company, with Chair rotating annually. Advisory only to Management Co.
Voting Rights	<ul style="list-style-type: none">▪ Equal to the percentage ownership prior to the commencement of the meeting (i.e. 50% each)▪ No casting vote by Chair
Key Decisions of Management Committee	<ul style="list-style-type: none">▪ Approval of Annual Business Plan and Life of Mine Plan▪ Approval of significant unbudgeted capital▪ Approval of significant contracts▪ Key appointments (General Manager at Gruyere and Auditor)
Toll Treatment	<ul style="list-style-type: none">▪ Regional Co-operation Agreement provides a framework to toll treat ore from Gold Road's tenements at Gruyere
Gruyere Royalty	<ul style="list-style-type: none">▪ 1.5% Net Smelter Royalty on Gold Fields 50% share of production from the JV after 2Moz mined at Gruyere (100% basis)

See ASX Announcement dated 7 November 2016