

Drilling Commences at Beatty Park Sth

Tambourah Metals (ASX: TMB) is pleased to advise that drilling has commenced at the Beatty Park Sth gold prospect which is 160km north of Meekatharra, Western Australia (see Figure 3).

The drill program will target significant historic gold results from the 1990s with drill intersections of high-grade supergene gold mineralisation and an overlying gold soil geochemical anomaly (see Table 1 and Figure 2) with a planned program of up to 25 holes for ~1,500m of drilling.

Stand out results from the historic RAB drilling included:

- **BPR16** **5m at 22.92 Au g/t from 44m.**
- **BPR68** **4m at 14.71 Au g/t from 44m.**
- **BPRC02** **1m at 28.65 Au g/t from 34m**
- **BPRC08** **5m at 15.25 Au g/t from 32m**

Hole ID	East_MGA	North_MGA	RL (nom)	Dip	Azimuth (mag)	From	To	Length	Grade Au g/t	Final Depth (m)
BPR16	632643	7157169	554	-60	98	44	49	5	22.92	50
BPR17	632620	7517172	554	-60	98	30	37	7	1.90	50
BPR18	632597	7157175	554	-60	98	27	31	4	1.74	50
BPR68	632675	7157164	554	-60	278	44	48	4	14.71	50
PRC02	632621	7157181	554	-60	188	34	35	1	28.65	64
PRC06	632648	7157205	554	-60	188	27	29	2	4.73	81
						44	47	3	6.07	
PRC08	632667	7157175	554	-60	188	32	37	5	15.25	80

Table 1 Beatty Park South significant historic drill intersections¹

¹ See Tambourah's ASX announcements dated 15th April 2025 and 20th June 2024.

Registered Address

Tambourah Metals Ltd
ABN: 196 46651 612
U2, LVL 2, 10 Ord St,
West Perth WA 6005

Board Members

Rita Brooks Executive Chairperson
Bill Marmion Non-Executive Director
Bill Clayton Non-Executive Director

Contact

T: +61 8 9481 8669
E: admin@tambourahmetals.com.au
W: tambourahmetals.com.au



Figure 1. Aircore drill rig for the Beatty Park Sth drill program.

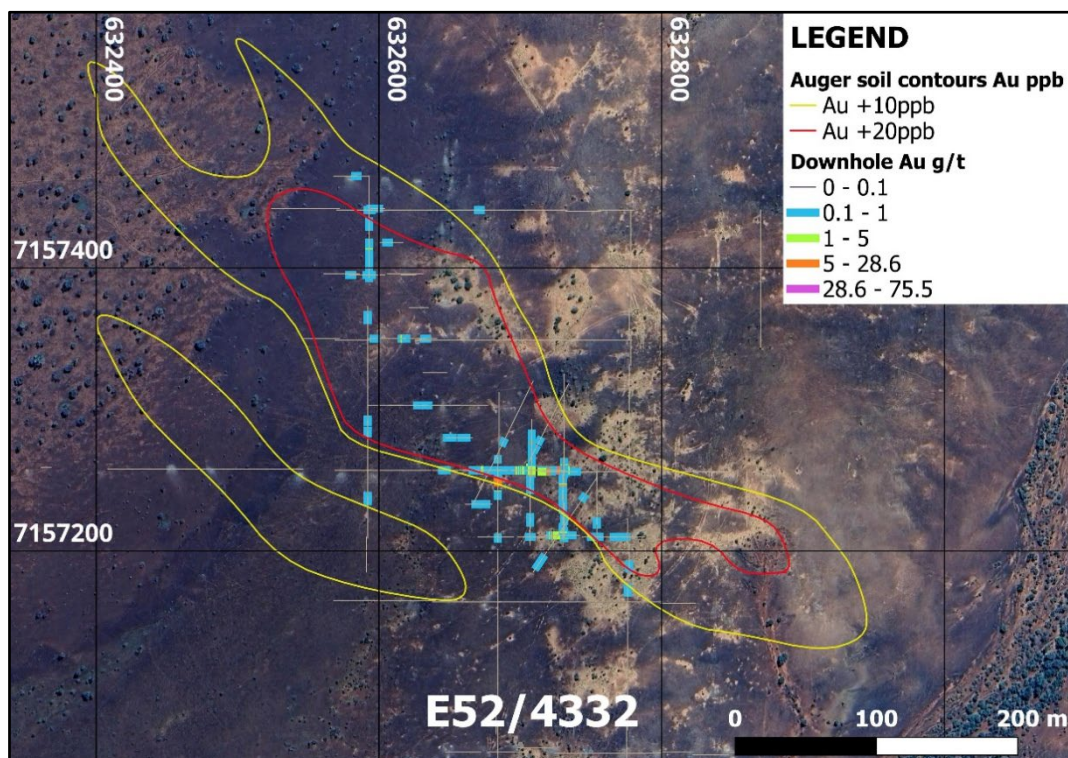


Figure 2. Beatty Park Sth Gold in soil anomaly overlying historic gold in drill intercepts.

The distribution of historic drill intercepts and a coincident 400m long +10ppb gold in soil anomaly aligned along a northwest trending axis is shown in Figure 2. The soil anomaly shows

a strong alignment with the reported supergene drill intercepts and a possible northwest trending structural control.

At Beatty Park Sth, gold mineralisation occurs near the upper contact of the Narracoota Formation with the overlying Horseshoe Formation. Elsewhere in the Bryah Basin, the top of the Narracoota Formation hosts significant deposits of gold and base metals. Beatty Park Sth was identified by AFMECO in 1993 and last drilled in 1996.

The aircore drilling is intended to confirm the historic RAB, RC and diamond drilling results prior to targeting the primary mineralisation with a further RC drilling program to commence once all the results have been reviewed, and statutory approvals are in place.

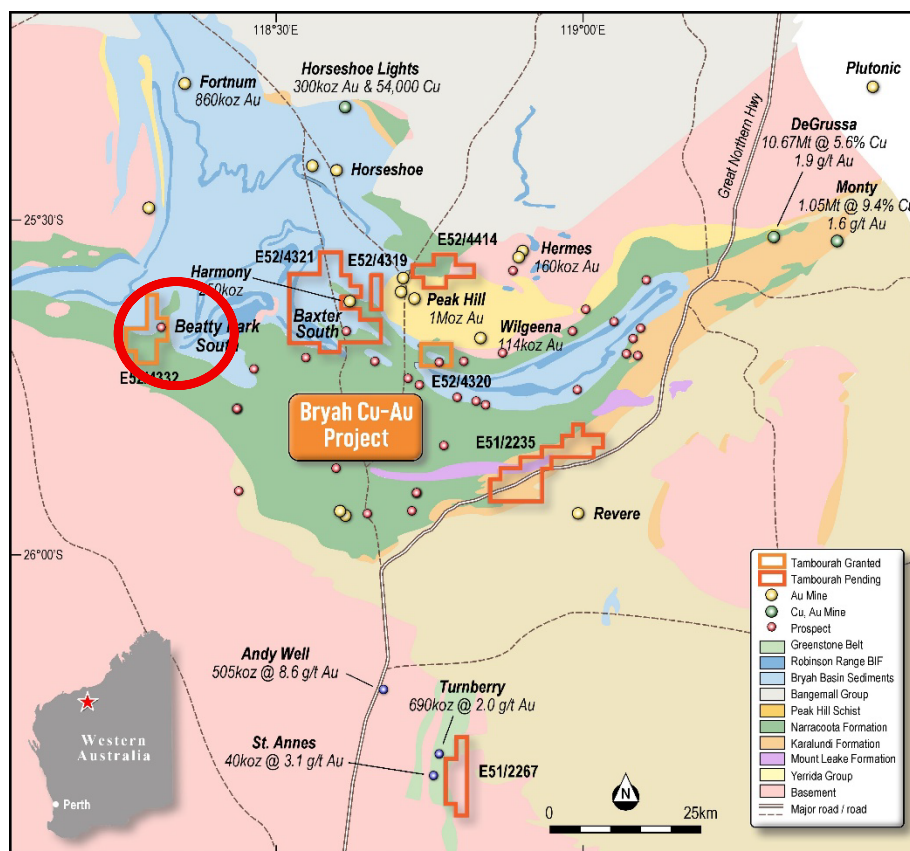


Figure 3. Location plan of the Beatty Park Sth gold project

This announcement has been authorised by the Board of Tambourah Metals Ltd.

For further information, please contact:

Rita Brooks

Executive Chairperson

T: 08 9481 8669

E: admin@tambourahmetals.com.au



Figure 3: Tambourah Metals Project Locations

About Tambourah Metals

Tambourah Metals is an exploration company established in 2020 to develop gold and critical mineral projects in West Australia. Tambourah is exploring for Gold at the Tambourah Goldfield, the Bryah Basin and the Cheela projects. The company has commenced exploration for Critical minerals at the Antimony-Copper project at Speewah Nth in the Kimberley and at the Shaw River project for Tin.

Forward Looking Statements

Certain statements in this document are or may be “forward-looking statements” and represent Tambourah’s intentions, projections, expectations, or beliefs concerning among other things, future exploration activities. The projections, estimates and beliefs contained in such forward-looking statements don’t necessarily involve known and unknown risks, uncertainties, and other factors, many of which are beyond the control of Tambourah Metals, and which may cause Tambourah Metals actual performance in future periods to differ materially from any express or implied estimates or projections. Nothing in this document is

a promise or representation as to the future. Statements or assumptions in this document as to future matters may prove to be incorrect and differences may be material. Tambourah Metals does not make any representation or warranty as to the accuracy of such statements or assumptions.

The references in this announcement to Exploration Results were reported in accordance with Listing Rule 5.7 in the following announcement:

- *“High grade gold targets identified at Bryah Project”. 20th June 2024.*
- *“Drilling planned for Bryah Gold Target”. 15th April 2025*

The Company confirms it is not aware of any new information or data that materially affects the information in the original reports and that the form and context in which the Competent Person’s findings are presented have not been materially modified from the original reports.

Competent Person’s Statement

The information in this report that relates to Exploration Results is based on information compiled by Mr. Bill Clayton, Geology Manager and a shareholder and Director of the Company, who is a Member of the Australian Institute of Geoscientists. Mr. Bill Clayton has sufficient experience which is relevant to the style of mineralisation and type of deposits under consideration and to the activity which he is undertaking to qualify as a Competent Person as defined in the 2012 Edition of the Australasian Code for Reporting of Exploration Results, Mineral Resources and Ore Reserves. Mr. Clayton consents to the inclusion in the report of the matters based on his information in the form and context in which it appears.