



ASX Announcement
2 July 2025

DRILLING UNDERWAY – KILLARNEY GOLD PROJECT

HIGHLIGHTS

Killarney Project – Gold

- Inaugural RC drilling program underway at the Killarney Gold Project to test multiple targets
- Initial program is approximately 1,500m and 15 drill holes – with a contingency for more as required
- Targets include the following:
 - high grade gold zones beneath the historical small open pit (historical results include **485g/t Au, 422g/t Au, 394g/t Au, 326g/t Au and 283g/t Au**)*
 - high grade gold rock chips 400m southeast of the pit (historical results include **140g/t Au, 87g/t Au, 54g/t Au, 43g/t Au and 42g/t Au**)*
 - **250m long geochemical anomaly** 80m north of the pit*
 - other, **single or multipoint geochemical anomalies***
- Strike Drilling are conducting the drill program
- Assays anticipated in 4-6 weeks from dispatch from site and dependant on assay laboratory turnaround

**Refer ASX announcements 10th April 2025 Duketon signs option to acquire high grade gold project in Murchison, and 24th June 2025 Killarney Exploration Update*

Duketon Mining Limited (Company or DKM) is pleased to announce the inaugural RC drill program is underway at the Killarney Gold Project. The project is located approximately 70km's east of Mt Magnet and approximately 8km's north of the sealed Mt Magnet – Leinster Road (see Figure 1). The initial program will consist of approximately 1,500m of drilling from 15 holes, however if required, there is contingency to drill additional holes.



Drilling will be focused on a number of targets within the project that include the following:

- high grade gold zones beneath both the historical small open pit where historical results taken in 2018 include 485g/t Au, 422g/t Au, 394g/t Au, 326g/t Au and 283g/t Au and an area immediately north of this that was mined by a prospector where approximately 20kg of gold was extracted from 4 tonnes of material (refer ASX announcement 10 April 2025);
- high grade gold rock chips 400m southeast of the pit (historical results include 140g/t Au, 87g/t Au, 54g/t Au, 43g/t Au and 42g/t Au) (refer ASX announcement 10 April 2025);
- 250m long (greater than 20ppb Au) geochemical anomaly 80m north of the pit (refer ASX announcement 24 June 2025); and
- numerous, single or multipoint geochemical anomalies.

Strike drilling is conducting the drill program.

Assays are anticipated to be received in 4 – 6 weeks from the time that they are dispatched from the drill site and dependant on assay laboratory turnaround.

The Company will update the market as results are received.

Authorised for release by:

Stuart Fogarty

Duketon Mining Limited - Managing Director
+61 8 6315 1490

Competent Person Statement

The information in this release that relates to exploration results is based on historical and current information compiled by Ms Kirsty Culver, Member of the Australian Institute of Geoscientists (AIG) and an employee of Duketon Mining Limited. Ms Culver has sufficient experience which is relevant to the style of mineralisation and type of deposit under consideration and to the activity that is being undertaken to qualify as a competent person as defined in the JORC Code 2012. Ms Culver consents to the inclusion in the report of the matters based on the information in the form and context in which it appears.

Validity of Referenced Results

The information in this report that references previously reported exploration results have been extracted from the Company's ASX market announcements released on the date noted in the body of the text where that reference appears. The previous market announcements are available to view on the Company's website or on the ASX website (www.asx.com.au). The Company confirms that it is not aware of any new information or data that materially affects the information included in the original market. The Company confirms that the form and context in which the Competent Person's findings are presented have not been materially modified from the original market announcements.

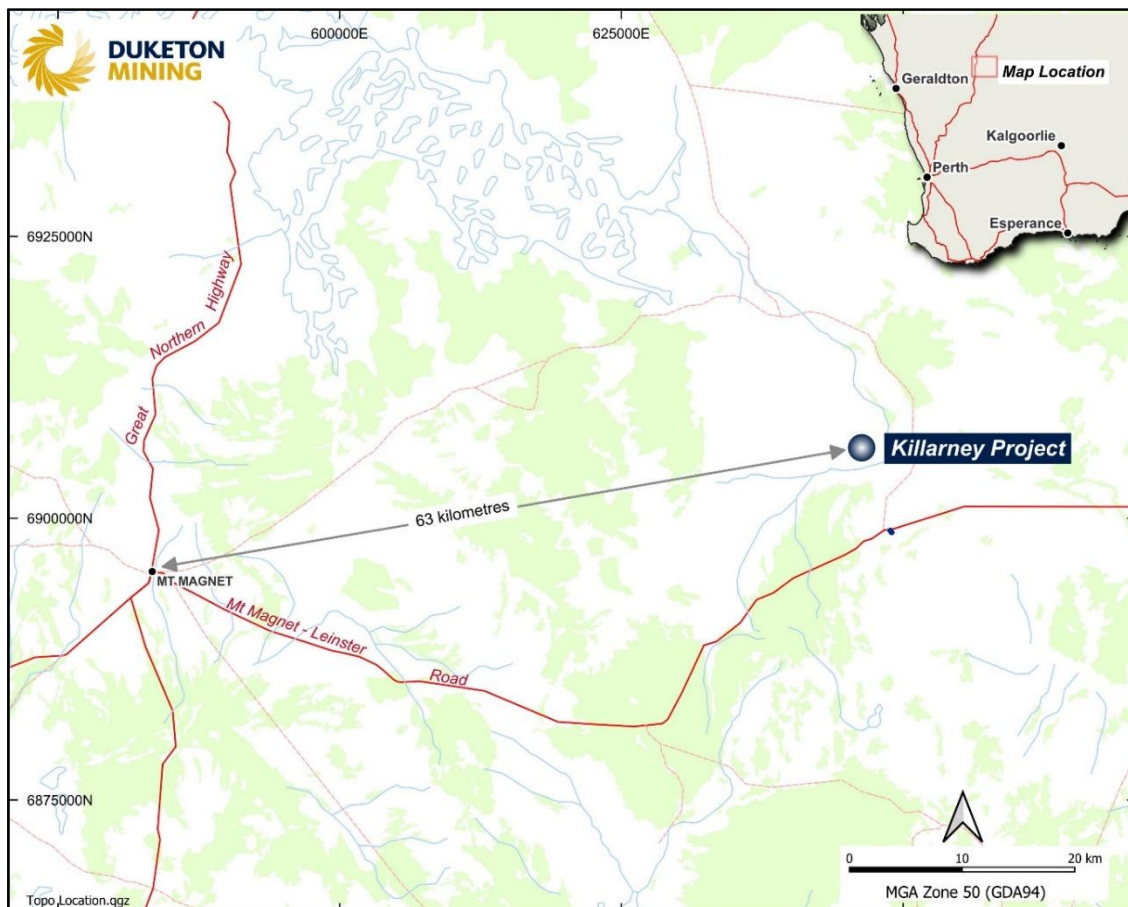


Figure 1: Killarney Project Location



Figure 2: RC Drill Rig on Site at Killarney Project