

## Reconnaissance programme extended at the Central Rutile Project

### **HIGHLIGHTS**

- *Initial reconnaissance programme has been extended at the Central Rutile Project to include a further 24-hole hand auger drill programme*
- *Extended reconnaissance drill programme earmarked for the northern portions of the Nsimbo and Alamba licences*
- *Objective is to rapidly assess geological continuity and potential extension of mineralisation across onto the Central Rutile Project following the high-grade drilling intercepts announced by Peak Minerals on their Afanloun licence <sup>1</sup>*
- *DY6 strongly believes mineralisation encountered by Peak Minerals at Afanloun extends onto the Nsimbo and Alamba licences according to regional geological continuity*
- *Extension of the reconnaissance programme at Central comes shortly after the company significantly expanded the project to 4,974km<sup>2</sup> (from 2,140km<sup>2</sup>) with the acquisition of the Weaver licences <sup>2</sup>*

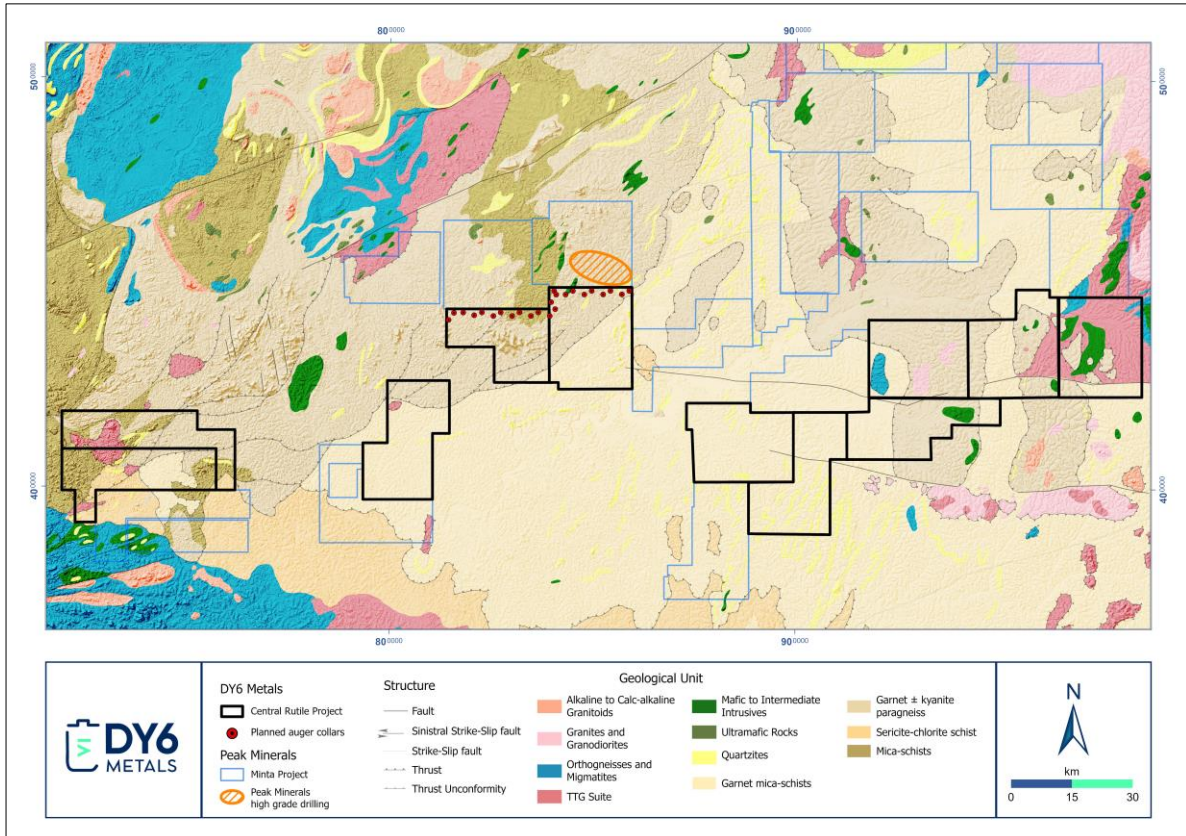
DY6 Metals Ltd (ASX: DY6, “**DY6**” or “**Company**”) is pleased to announce that it has extended the initial reconnaissance programme at the Central Rutile Project to include a 24-hole hand auger drill programme. Drill teams will be mobilised this week for rapid execution of the programme. The objective of the extended reconnaissance programme is to assess the geological continuity and potential extension of mineralisation encountered by Peak Minerals during recent drilling on their Afanloun licence just north of the border with our Nsimbo licence<sup>1</sup>.

Peak Minerals (ASX:PUA) recently reported high-grade residual results from Afanloun including 7m @ 5.1% HM from 0m (MRAU0191), 7m @ 4.5% HM from 0m (MRAU0186), 4.7m @ 5.2% HM from 0m (MRAU0194) and 3m @ 7% HM from 0m (MRAU0206) – as reported in their release from 1 July 2025: “*Heavy Mineral Significantly Increases at Minta Rutile Project*”.

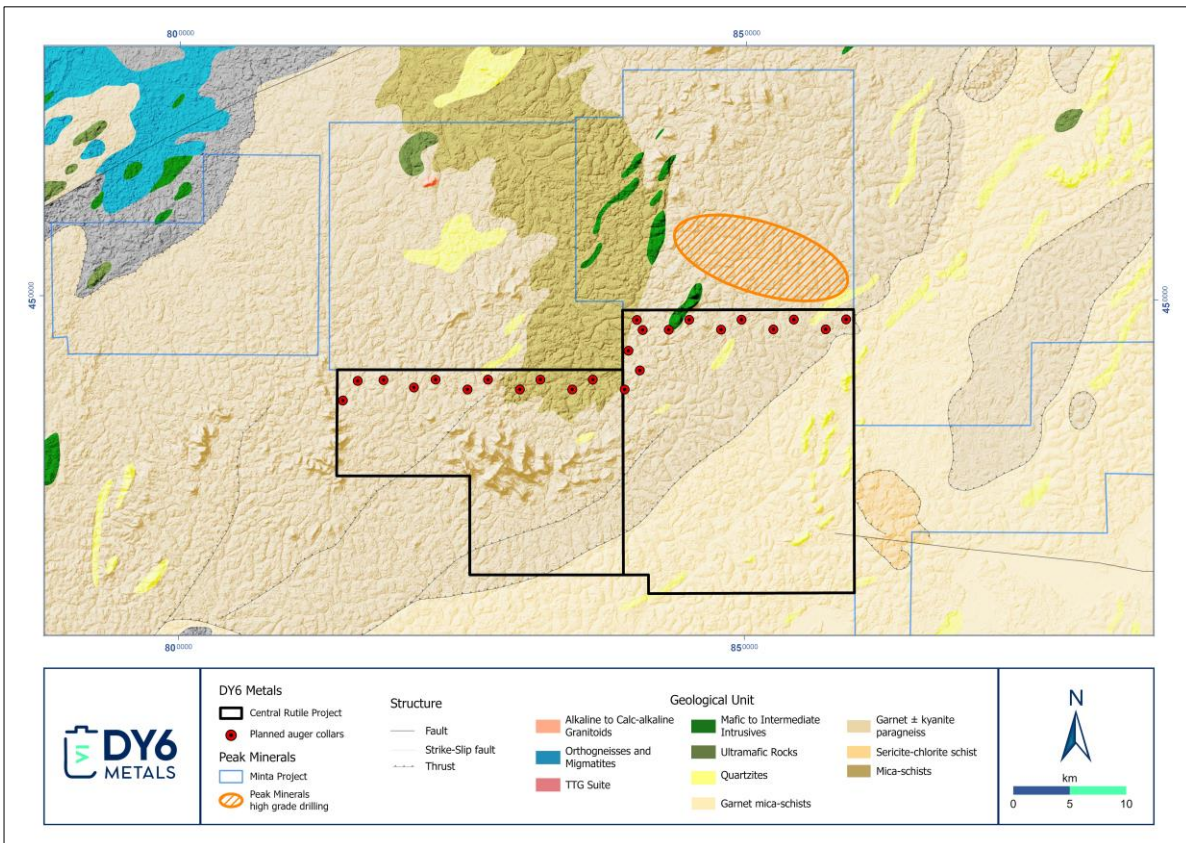
Technical consultant, Cliff Fitzhenry, commented: “*Although the next step for the Central Rutile Project is to launch a project-wide regional soil sampling campaign (and this is still very much the plan), we have decided to rapidly mobilise our field drilling crews to assess the northern portions of our Nsimbo and Alamba licences. The high-grade residual mineralisation reported by Peak Minerals just north of our licence border highlights the rich prospectivity of this area and, given the homogeneity of this mineralisation style as well as the fact that Nsimbo and Alamba are underlain by the same geological unit as Afanloun in a garnet-kyanite paragneiss, we strongly suspect that this mineralisation will extend onto our licences. This quick-fire drill programme will provide valuable information and we look forward to reporting the results of this campaign as it progresses. The plan is to still cover the full licence package with a systematic soil sampling campaign, and this will be kicking off imminently.*”

<sup>1</sup> Refer Peak Minerals ASX Announcement dated 1 July 2025 “*Heavy Mineral Zone Significantly Increases at Minta Rutile Project*”

<sup>2</sup> Refer DY6 Metals ASX Announcement dated 8 July 2025 “*DY6 significantly expands size of the Central Rutile Project*”



**Figure 1:** Regional geological map of Central Cameroon showing DY6's Central Rutile Project and the planned hand auger reconnaissance programme on the northern portion of the Nsimbo and Alambo licences.



**Figure 2:** Zoomed in map of the above showing the licences in greater detail including the area of high-grade drilling as reported by Peak Minerals, as well as the planned quick-fire drill campaign.



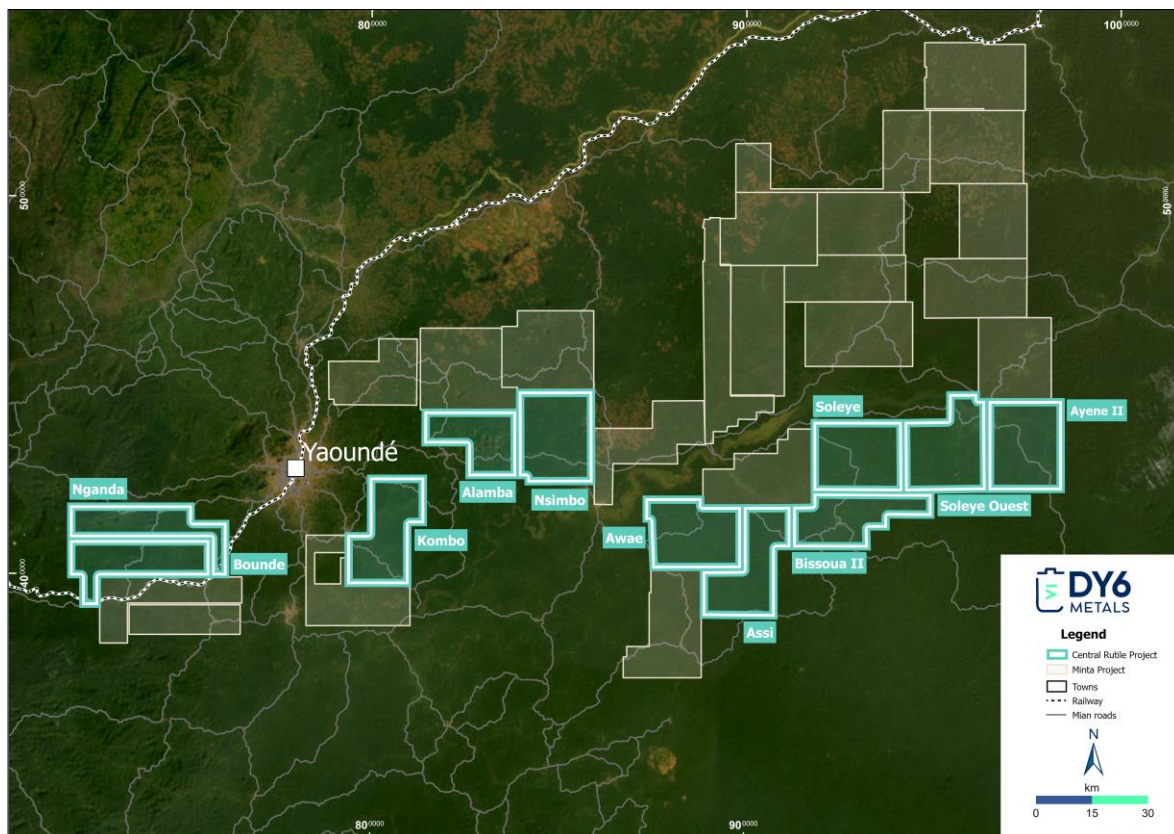
## Background on the Project

### Central Rutile Project

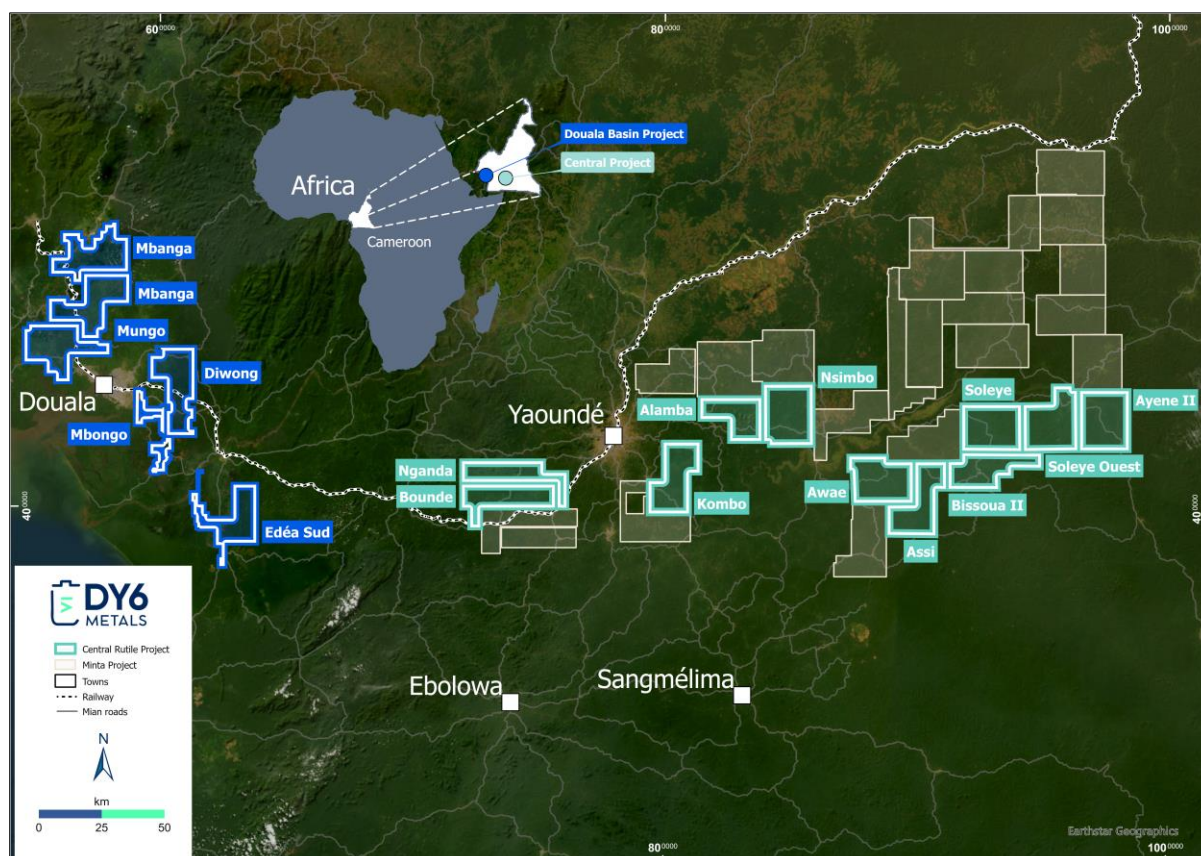
The Central Rutile Project consists of 11 exploration licences (Nganda, Bounde, Kombo, Alamba, Nsimbo, Awae, Ayene II, Assi, Bissoua 2, Soleyé and Soleyé West) under valid applications covering 4,974km<sup>2</sup> across an area rapidly emerging as a globally significant rutile province within Central Cameroon. This includes the acquisition of the Weaver Project (6 licences totaling 2,850km<sup>2</sup>) as announced on 8 July 2025 (*“DY6 significantly expands size of the Central Rutile Project”*).

The project area is predominantly underlain by kyanite-bearing mica schist bedrock, which is considered the primary source of rutile. During in-situ weathering, rutile is liberated from the bedrock and progressively concentrated and upgraded within the overlying saprolite layer. This forms an in-situ, eluvial saprolite hosted rutile deposit target type deposit analogous to Sovereign Metal’s Tier 1 Kasiya deposit in Malawi (the world’s largest primary rutile deposit at 1.8 billion tons at 1.0% rutile).

The exploration model further proposes that subsequent erosion and fluvial transport rework these materials, concentrating rutile and other valuable heavy minerals into alluvial deposits. Historical production figures from the area between 1935 and 1955 have recorded some 15,000 tons of high purity (>95 %) rutile being produced from artisanal mining of the alluvial deposits around Nanga-Eboko. The Central Rutile Project borders Peak Mineral’s Minta Rutile Project where initial sampling has revealed widespread, high-value mineral assemblages with valuable heavy minerals (**VHM**) up to 93% of total heavy minerals (**THM**) and with the dominant VHM’s being rutile (up to 69.8%), monazite (up to 35.6%) and zircon (up to 21.5%) (see PUA Announcement *“First systematic exploration programme discovers significant rutile province in Cameroon”* dated 4 February 2025).



**Figure 3:** Map of Central Cameroon showing DY6’s Central Rutile Project which now encompasses 4,974km<sup>2</sup> of prime geological terrain highly prospective for residual, natural rutile mineralisation.



**Figure 4:** Map showing DY6's total landholding in Central Cameroon which includes the Douala Basin HMS Project and the newly expanded Central Rutile Project, and which now totals 7,554km<sup>2</sup>.

-ENDS-

This announcement has been authorised by the Board of DY6.

### More information

Mr Daniel Smith	Mr John Kay	Mr Cliff Fitzhenry
Executive Chairman	Director & Company Secretary	Technical Consultant
<a href="mailto:dan.smith@dy6metals.com">dan.smith@dy6metals.com</a>	<a href="mailto:john.kay@dy6metals.com">john.kay@dy6metals.com</a>	<a href="mailto:Clifford.fitzhenry@dy6metals.com">Clifford.fitzhenry@dy6metals.com</a>

### Competent Person Statement

The information contained in this announcement that relates to geological information and exploration results at the Central Rutile Project, is based on information compiled by Mr Clifford Fitzhenry, a Competent Person who is a Registered Professional Natural Scientist with the Council for Natural Scientific Professionals (SACNASP). Mr Fitzhenry is a consultant to the company and has sufficient experience which is relevant to the style of mineralization and type of deposit under consideration and to the activity which he is undertaking to qualify as a Competent Person as defined in the 2012 Edition of the 'Australasian Code for Reporting of Exploration Results, Mineral Resources and Ore Reserves'. Mr Fitzhenry consents to the inclusion in this announcement of the matters based on his information in the form and context in which it appears.

## Forward-Looking Statements

This announcement may include forward-looking statements and opinions. Forward-looking statements, opinions and estimates are only predictions and are subject to risks, uncertainties and assumptions which are outside the control of DY6 Metals Ltd. Past performance is not necessarily a guide to future performance and no representation or warranty is made as to the likelihood of achievement or reasonableness of any forward-looking statements, opinions or estimates. Actual values, results or events may be materially different to those expressed or implied in this announcement.

Given these uncertainties, readers are cautioned not to place reliance on forward-looking statements, opinions or estimates. Any forward-looking statements, opinions or estimates in this announcement speak only at the date of issue of this announcement. Subject to any continuing obligations under applicable law and the ASX Listing Rules, DY6 does not undertake any obligation to update or revise any information or any of the forward-looking statements opinions or estimates in this announcement or any changes in events, conditions or circumstances on which any such disclosures are based.

## Appendix:

**Table 1:** Licence details of the DY6's Douala Basin HMS and Central Rutile Projects in Cameroon.

Tenement Name	Project Name	Holder	Application Date	Area	Granted Date
Mungo	Douala	Rhino Resources Ltd	29/06/2022	483km <sup>2</sup>	14/12/2022
Mbanga	Douala	Rhino Resources Ltd	29/06/2022	468km <sup>2</sup>	14/12/2022
Maleke	Douala	Rhino Resources Ltd	30/01/2024	491km <sup>2</sup>	N/A
Diwong	Douala	Rhino Resources Ltd	30/01/2024	484km <sup>2</sup>	N/A
Mbongo	Douala	Rhino Resources Ltd	30/09/2022	214km <sup>2</sup>	N/A
Edea Sud	Douala	Rhino Resources Ltd	29/06/2022	440km <sup>2</sup>	14/12/2022
Nganda	Central	Gorilla Mining Ltd	19/02/2025	396km <sup>2</sup>	N/A
Nsimbo	Central	Gorilla Mining Ltd	19/02/2025	495km <sup>2</sup>	N/A
Kombo	Central	Gorilla Mining Ltd	19/02/2025	460km <sup>2</sup>	N/A
Bounde	Central	Gorilla Mining Ltd	19/02/2025	425km <sup>2</sup>	N/A
Alamba	Central	Gorilla Mining Ltd	19/02/2025	348km <sup>2</sup>	N/A
Awae	Central	Weaver Resources Ltd	07/07/2025	462km <sup>2</sup>	N/A
Ayene II	Central	Weaver Resources Ltd	07/07/2025	497km <sup>2</sup>	N/A
Assi	Central	Weaver Resources Ltd	07/07/2025	488km <sup>2</sup>	N/A
Bissoua_II	Central	Weaver Resources Ltd	07/07/2025	441km <sup>2</sup>	N/A
Soleye	Central	Weaver Resources Ltd	23/06/2025	466km <sup>2</sup>	N/A
Soleye_W	Central	Weaver Resources Ltd	23/06/2025	496km <sup>2</sup>	N/A