

Systematic Soil Sampling Campaign Commences at the Central Rutile Project

HIGHLIGHTS

- Central Rutile Project now advances to next phase with a systematic soil sampling campaign covering the full 4,974km² project landholding commencing
- Sampling planned on a 5km line spacing and 1km sample spacing plan across the regional geological trend
- Soil sampling campaign is designed to delineate areas of higher Rutile % grades, providing grassroots data to enable a focused maiden drilling campaign thereafter
- Soils campaign will run concurrently with the hand auger drill campaign planned for the northern portion of the Nsimbo and Alamba licences¹

DY6 Metals Ltd (ASX: DY6, “**DY6**” or “**Company**”) is pleased to announce that it has commenced a systematic soil sampling campaign over its Central Rutile Project in Cameroon. The planned 976 sample campaign will be carried out on a 5km line spacing with 1km sample spacing and with lines orientated across the geological trend of the area. The programme will provide full coverage of the entire 4,974km² project area and will delineate areas of higher rutile % grades.

Technical consultant, Cliff Fitzhenry, commented: “*The commencement of the systematic soil sampling campaign is an important step for the company as we move the Central Rutile Project forward to the next phase. The clear objective of this programme is to rapidly cover the entire project area and to clearly delineate areas of higher rutile % grades. This will allow us to plan a focused maiden drill programme for soon thereafter. This soils campaign will be carried out concurrently with the 24-hole quick-fire hand auger drill programme planned for the northern portion of our Nsimbo and Alamba licences¹.*”

¹ Refer DY6 Metals ASX Announcement dated 10 July 2025 “*Reconnaissance Programme Extended at the Central Rutile Project*”

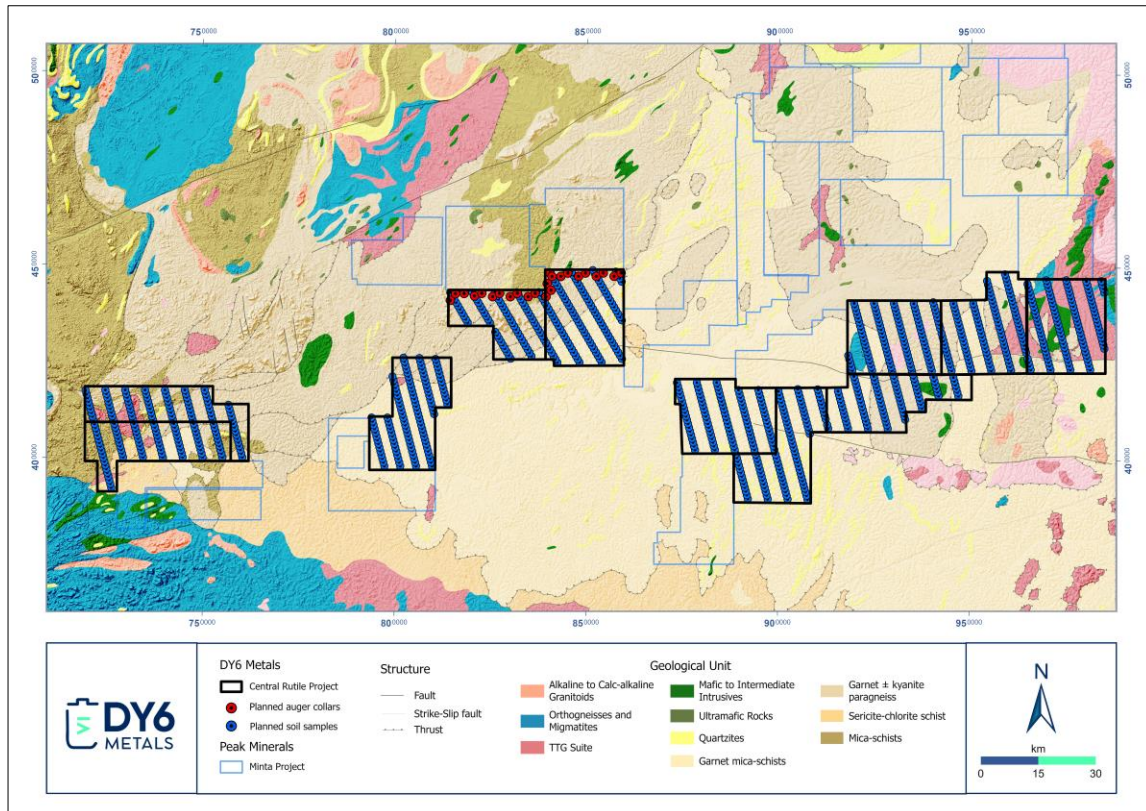


Figure 1: Regional geological map of Central Cameroon showing DY6's Central Rutile Project and the planned hand auger reconnaissance programme on the northern portion of the Nsimbo and Alambo permits.

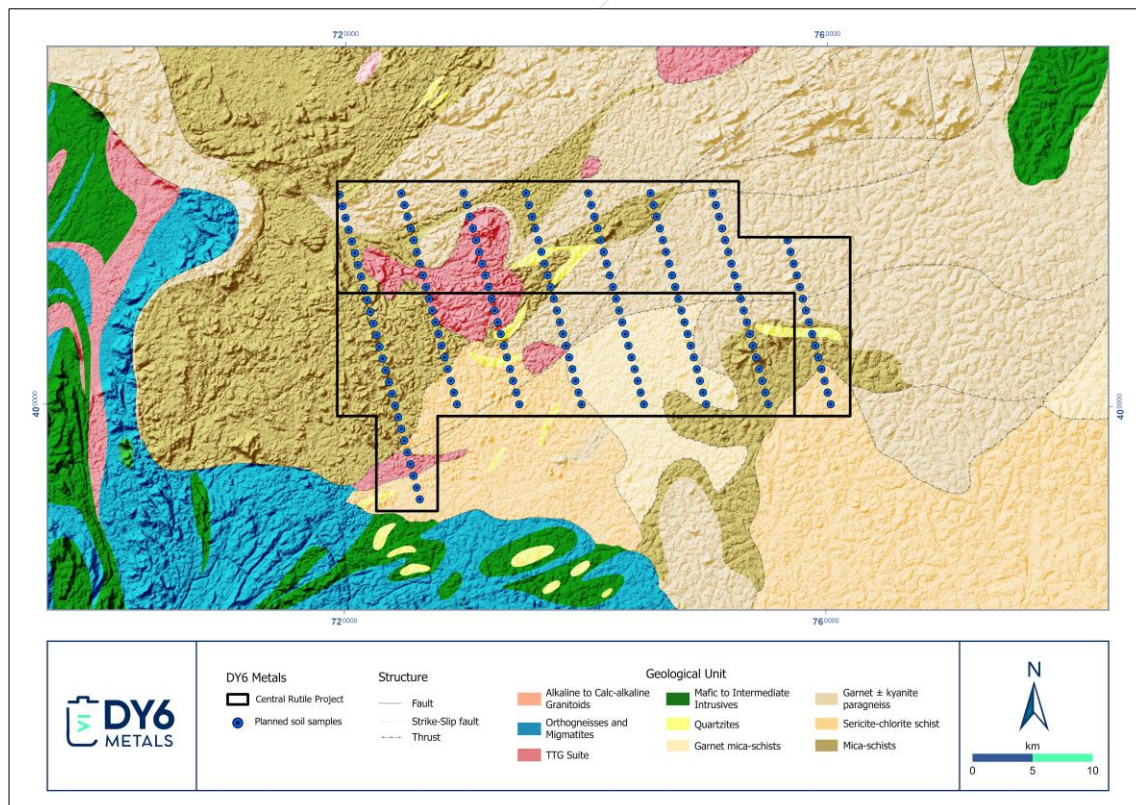


Figure 2: Systematic soil sampling campaign planned for the Nganda and Bounde licences west of Yaounde.

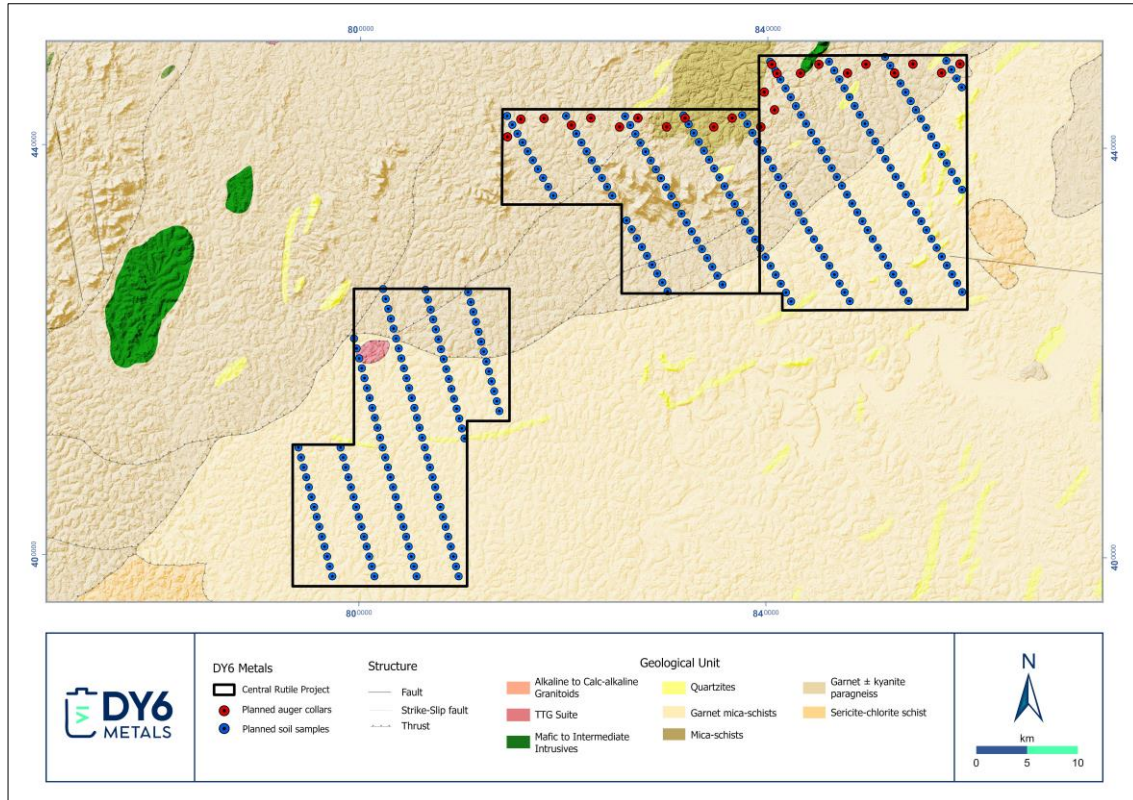


Figure 3: Systematic soil sampling campaign, as well as the 24-hole reconnaissance hand auger drill programme, planned for the Kombo, Alamba and Nsimbo licences.

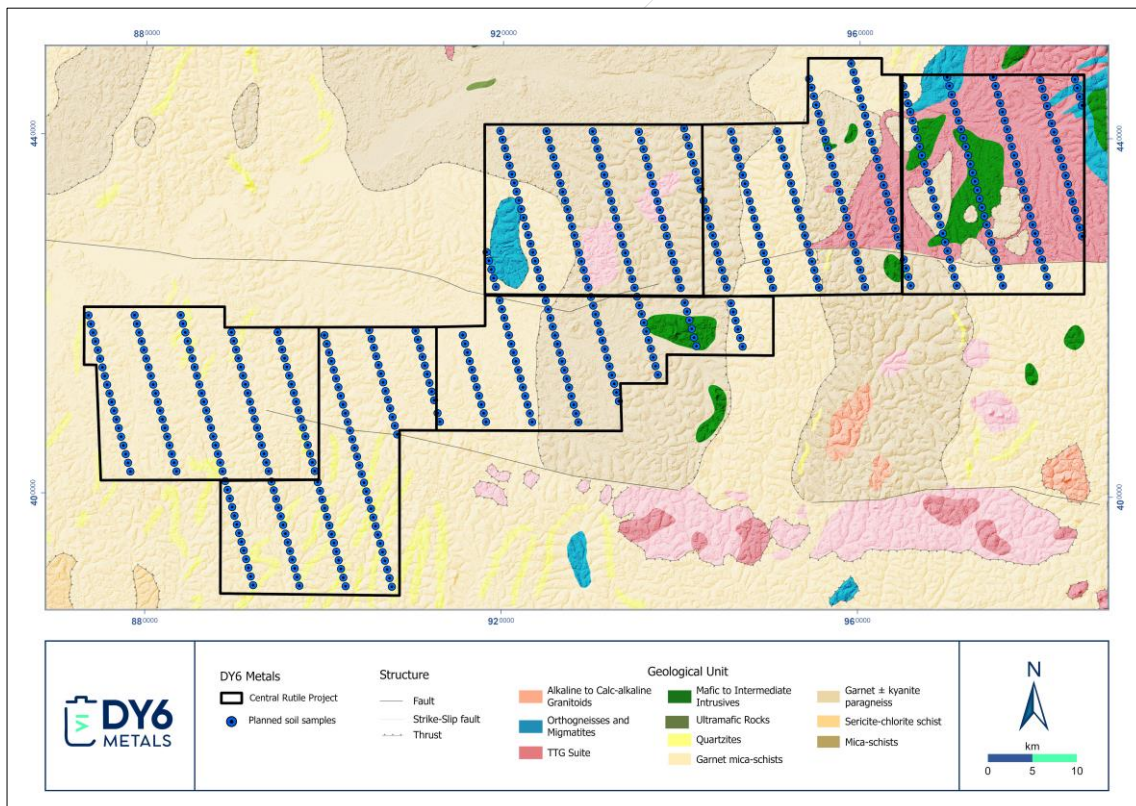


Figure 4: Systematic soil sampling campaign planned for the recently acquired "Weaver" package of licences.

Background on the Project

Central Rutile Project

The Central Rutile Project consists of 11 exploration permits (Nganda, Bounde, Kombo, Alamba, Nsimbo, Awae, Ayene II, Assi, Bissoua 2, Soley and Soley West) under valid applications covering 4,974km² across an area rapidly emerging as a globally significant rutile province within Central Cameroon. This includes the acquisition of the Weaver Project (6 licences totaling 2,850km²) as announced on 8 July 2025 (*“DY6 significantly expands size of the Central Rutile Project”*).

The project area is predominantly underlain by kyanite-bearing mica schist bedrock, which is considered the primary source of rutile. During in-situ weathering, rutile is liberated from the bedrock and progressively concentrated and upgraded within the overlying saprolite layer. This forms an in-situ, eluvial saprolite hosted rutile deposit target type deposit analogous to Sovereign Metal’s Tier 1 Kasiya deposit in Malawi (the world’s largest primary rutile deposit at 1.8 billion tons at 1.0% rutile).

The exploration model further proposes that subsequent erosion and fluvial transport rework these materials, concentrating rutile and other valuable heavy minerals into alluvial deposits. Historical production figures from the area between 1935 and 1955 have recorded some 15,000 tons of high purity (>95 %) rutile being produced from artisanal mining of the alluvial deposits around Nanga-Eboko. The Central Rutile Project borders Peak Mineral’s Minta Rutile Project where initial sampling has revealed widespread, high-value mineral assemblages with valuable heavy minerals (**VHM**) up to 93% of total heavy minerals (**THM**) and with the dominant VHM’s being rutile (up to 69.8%), monazite (up to 35.6%) and zircon (up to 21.5%) (see PUA Announcement *“First systematic exploration programme discovers significant rutile province in Cameroon”* dated 4 February 2025).

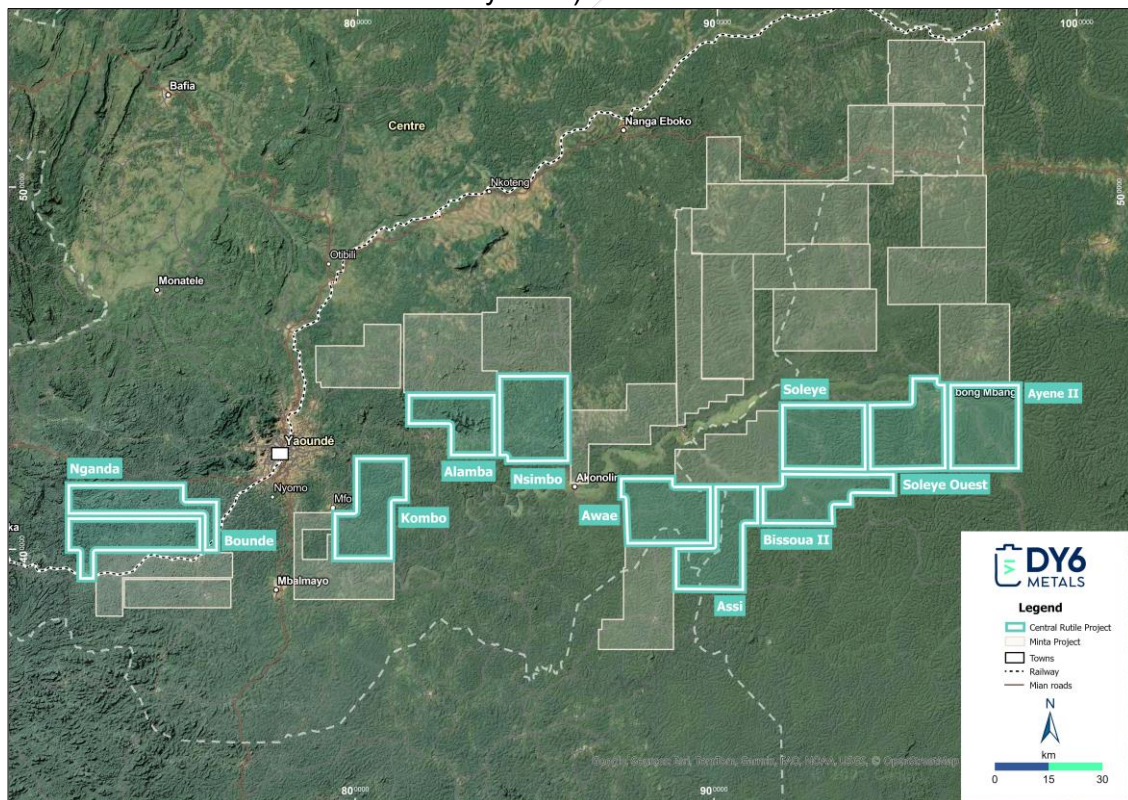


Figure 5: Map of Central Cameroon showing DY6’s Central Rutile Project which now encompasses 4,974km² of prime geological terrain highly prospective for residual, natural rutile mineralisation.

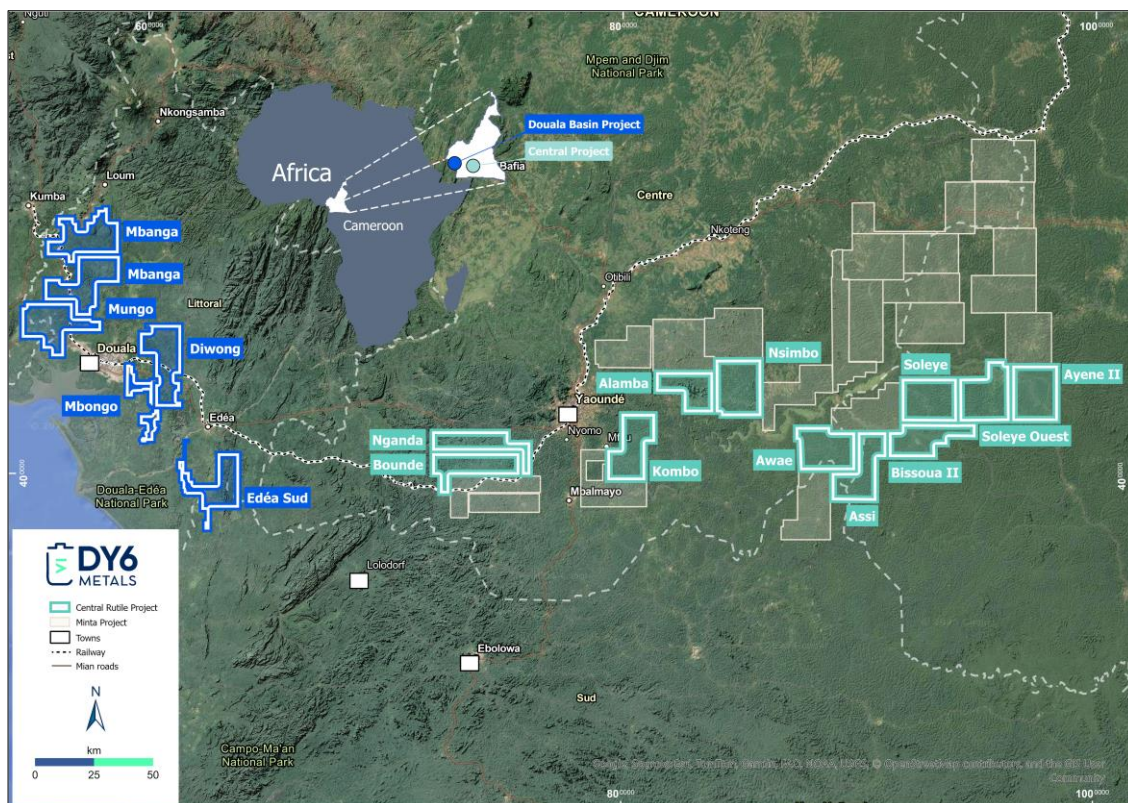


Figure 6: Map of Cameroon which shows DY6's full landholding including the Douala Basin Project and the Central Rutile Project.

-ENDS-

This announcement has been authorised by the Board of DY6.

More information

Mr Daniel Smith	Mr John Kay	Mr Cliff Fitzhenry
Executive Chairman	Director & Company Secretary	Technical Consultant
dan.smith@dy6metals.com	john.kay@dy6metals.com	Clifford.fitzhenry@dy6metals.com

Competent Person Statement

The information contained in this announcement that relates to geological information and exploration results at the Central Rutile Project, is based on information compiled by Mr Clifford Fitzhenry, a Competent Person who is a Registered Professional Natural Scientist with the Council for Natural Scientific Professionals (SACNASP). Mr Fitzhenry is a consultant to the company and has sufficient experience which is relevant to the style of mineralization and type of deposit under consideration and to the activity which he is undertaking to qualify as a Competent Person as defined in the 2012 Edition of the 'Australasian Code for Reporting of Exploration Results, Mineral Resources and Ore Reserves'. Mr Fitzhenry consents to the inclusion in this announcement of the matters based on his information in the form and context in which it appears.

Forward-Looking Statements

This announcement may include forward-looking statements and opinions. Forward-looking statements, opinions and estimates are only predictions and are subject to risks, uncertainties and assumptions which are outside the control of DY6 Metals Ltd. Past performance is not necessarily a guide to future performance and no representation or warranty is made as to the likelihood of achievement or reasonableness of any forward-looking statements, opinions or estimates. Actual values, results or events may be materially different to those expressed or implied in this announcement.

Given these uncertainties, readers are cautioned not to place reliance on forward-looking statements, opinions or estimates. Any forward-looking statements, opinions or estimates in this announcement speak only at the date of issue of this announcement. Subject to any continuing obligations under applicable law and the ASX Listing Rules, DY6 does not undertake any obligation to update or revise any information or any of the forward-looking statements opinions or estimates in this announcement or any changes in events, conditions or circumstances on which any such disclosures are based.

Appendix:

Table 1: Licence tenement details of the DY6's Douala Basin HMS and Central Rutile Projects in Cameroon.

Tenement Name	Project Name	Holder	Application Date	Area	Granted Date
Mungo	Douala	Rhino Resources Ltd	29/06/2022	483km ²	14/12/2022
Mbanga	Douala	Rhino Resources Ltd	29/06/2022	468km ²	14/12/2022
Maleke	Douala	Rhino Resources Ltd	30/01/2024	491km ²	N/A
Diwong	Douala	Rhino Resources Ltd	30/01/2024	484km ²	N/A
Mbongo	Douala	Rhino Resources Ltd	30/09/2022	214km ²	N/A
Edea Sud	Douala	Rhino Resources Ltd	29/06/2022	440km ²	14/12/2022
Nganda	Central	Gorilla Mining Ltd	19/02/2025	396km ²	N/A
Nsimbo	Central	Gorilla Mining Ltd	19/02/2025	495km ²	N/A
Kombo	Central	Gorilla Mining Ltd	19/02/2025	460km ²	N/A
Bounde	Central	Gorilla Mining Ltd	19/02/2025	425km ²	N/A
Alamba	Central	Gorilla Mining Ltd	19/02/2025	348km ²	N/A
Awae	Central	Weaver Resources Ltd	07/07/2025	462km ²	N/A
Ayene II	Central	Weaver Resources Ltd	07/07/2025	497km ²	N/A
Assi	Central	Weaver Resources Ltd	07/07/2025	488km ²	N/A
Bissoua _II	Central	Weaver Resources Ltd	07/07/2025	441km ²	N/A
Soleye	Central	Weaver Resources Ltd	23/06/2025	466km ²	N/A
Soleye_W	Central	Weaver Resources Ltd	23/06/2025	496km ²	N/A