

## DY6 further expands licence holding at Central Rutile Project

### **HIGHLIGHTS**

- The Company has secured three additional licences through direct applications at the Central Rutile Project, increasing the total landholding to 5,901km<sup>2</sup>
- The Biyan licence is contiguous to the Nganda and Bounde permits where the Company recently reported both visible HM mineralisation as well as large (2-4cm) rutile nuggets within residual regolith samples<sup>1</sup>
- The Nlong licence is immediately west of the Alamba and Nsimbo permits, which are seen as along trend from recently reported high-grade results from Peak Minerals' Afanloum licence<sup>2</sup> based on regional geological continuity
- The Ayene licence is situated to the south-west of the recently acquired Weaver group of licences
- The Biyan and Nlong licences are underlain by a garnet-kyanite paragneiss while the Ayene licence is underlain by a garnet-mica schist, both geological units of which are interpreted to be the primary source of rutile in the region
- The Company's systematic soil sampling programme will be expanded to include the new licence applications

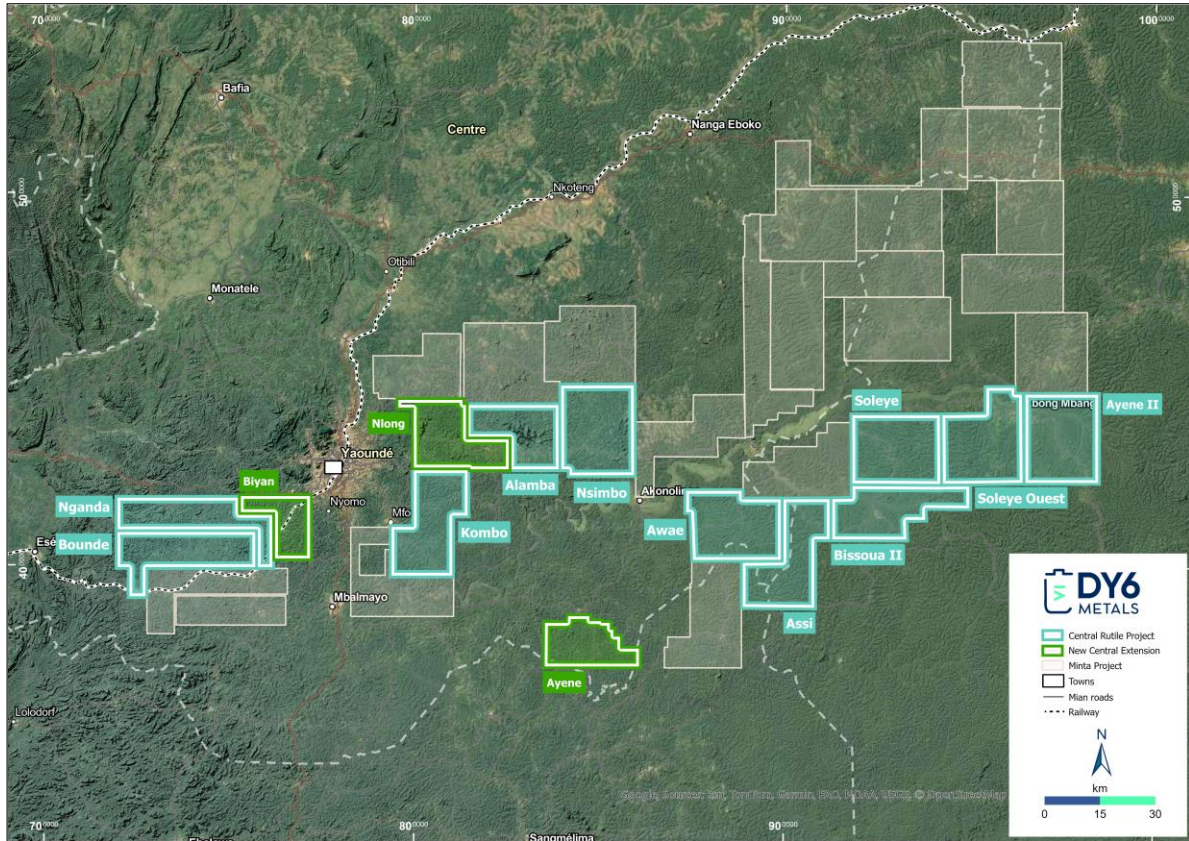
DY6 Metals Ltd (ASX: DY6, "**DY6**" or "**Company**") is pleased to announce that the Company has further increased the size of its Central Rutile Project through the direct application of three additional exploration licence applications considered highly prospective for rutile and heavy mineral sands (**HMS**).

The new licences (Biyan, Nlong, and Ayene) further expand the project landholding from 4,974km<sup>2</sup> to 5,901km<sup>2</sup> (**Figure 1**). The Biyan licence is contiguous to the Nganda and Bounde permits south-west of Yaounde where the Company recently reported both visible HM mineralisation as well as large (2-4cm) rutile nuggets within residual regolith samples<sup>1</sup>. The Nlong licence is immediately west of the Company's Alamba and Nsimbo permits which are currently the focus of the recently announced soil and reconnaissance auger drilling programmes, adjacent to where Peak Minerals (ASX:PUA) recently reported high-grade residual results from their Afanloum permit, including: 7m @ 5.1% HM from 0m (MRAU0191), 7m @ 4.5% HM from 0m (MRAU0186), and 4.7m @ 5.2% HM from 0m (MRAU0194)<sup>2</sup>.

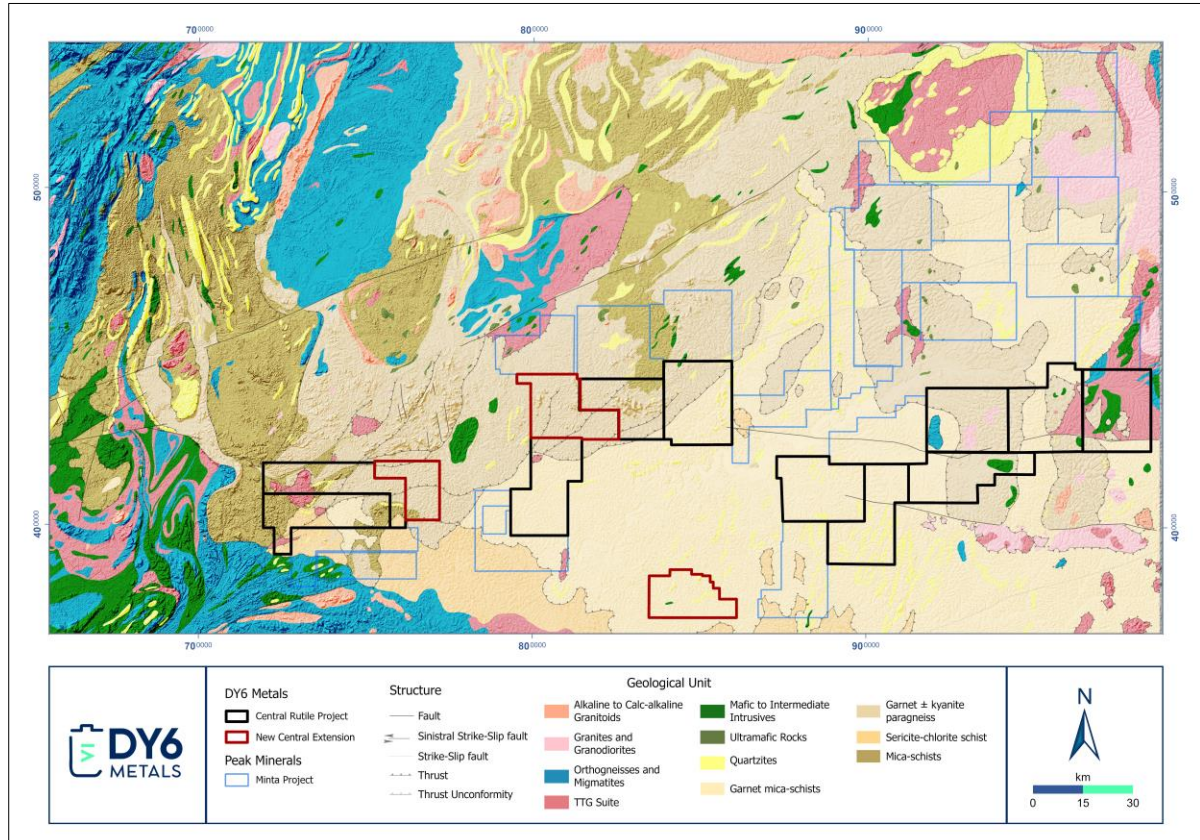
**CEO, Cliff Fitzhenry, commented:** "DY6 has been able to move quickly in securing additional ground in what we continue to see as an emerging globally significant rutile province. With these three new licences, we have expanded the total landholding at the Central Rutile Project to 5,901km<sup>2</sup>. The recently announced systematic soil sampling programme will be expanded to include the new licence applications. We are keen to further expand our footprint at the Central Rutile Project where we see the right ingredients for prospective residual natural rutile deposits, being correct underlying geology, a deep in-situ weathering profile, and strategically located."

<sup>1</sup> Refer DY6 Metals ASX Announcement dated 30 June 2025 "Completion of Reconnaissance Program with Further Natural Rutile Observed at the Central Rutile Project"

<sup>2</sup> Refer Peak Minerals ASX Announcement dated 1 July 2025 "Heavy Mineral Zone Significantly Increases at Minta Rutile Project"

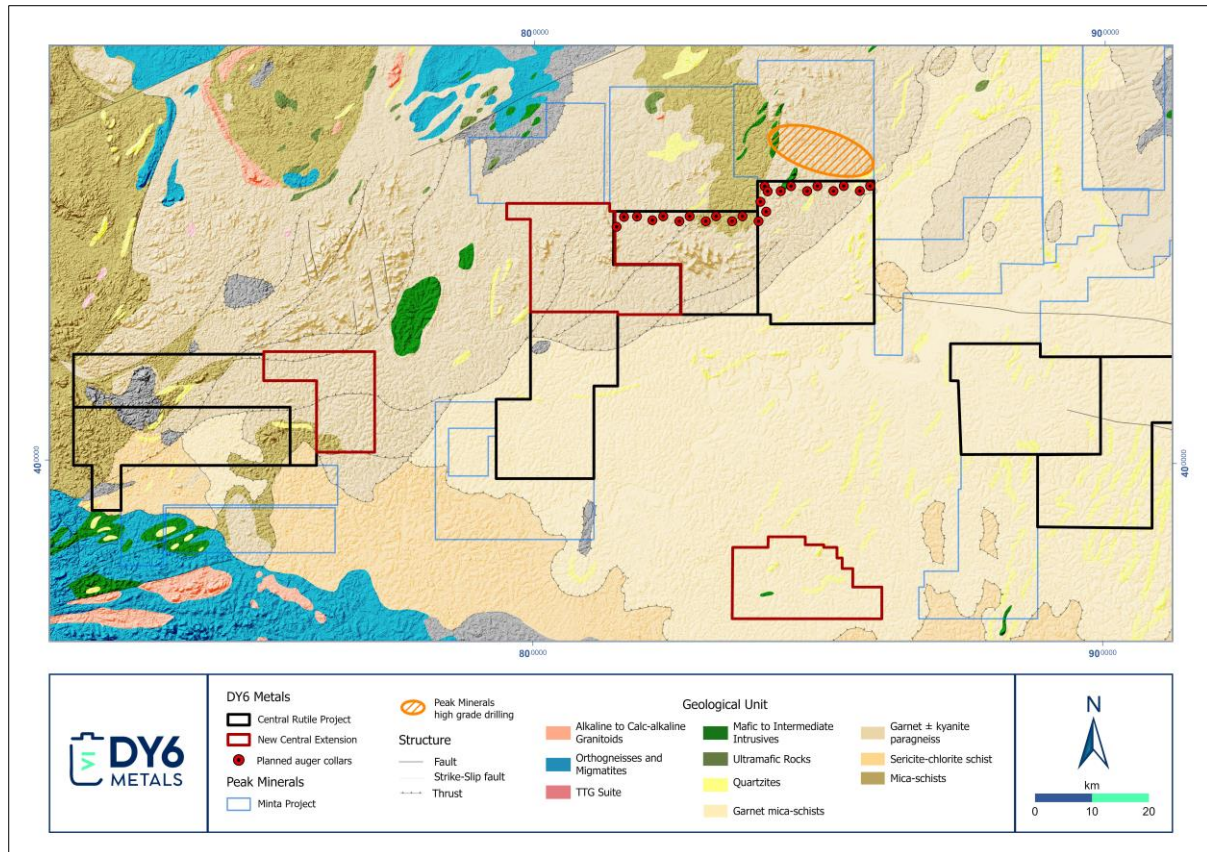


**Figure 1:** Map of Central Cameroon showing DY6's expanded Central Rutile Project.



**Figure 2:** Geological map of Central Cameroon showing DY6's new 3 licences in red, all underlain by prospective garnet-kyanite paragneiss or garnet-mica schist bedrock.





**Figure 3:** Geological map of Central Cameroon showing DY6's Nsimbo and Alamba licences contiguous to Peaks' Afanloum licence with the shaded zone representing their area of high-grade residual drilling. Note the location of the new Nlong permit west of Alamba and directly on geological trend from the area of high-grade drilling.

### Central Rutile Project

The Central Rutile Project consists of 14 exploration permits under valid applications covering 5,901km<sup>2</sup> across an area rapidly emerging as a globally significant rutile province within Central Cameroon.

The project area is predominantly underlain by kyanite-bearing mica schist bedrock, which is considered the primary source of rutile. During in-situ weathering, rutile is liberated from the bedrock and progressively concentrated and upgraded within the overlying saprolite layer. This forms an in-situ, eluvial saprolite hosted rutile deposit target type deposit analogous to Sovereign Metal's Tier 1 Kasiya deposit in Malawi (the world's largest primary rutile deposit at 1.8 billion tons at 1.0% rutile).

The exploration model further proposes that subsequent erosion and fluvial transport rework these materials, concentrating rutile and other valuable heavy minerals into alluvial deposits. Historical production figures from the area between 1935 and 1955 have recorded some 15,000 tons of high purity (>95 %) rutile being produced from artisanal mining of the alluvial deposits around Nanga-Eboko. The Central Rutile Project borders Peak Mineral's Minta Rutile Project where initial sampling has revealed widespread, high-value mineral assemblages with valuable heavy minerals (**VHM**) up to 93% of total heavy minerals (**THM**) and with the dominant VHM's being rutile (up to 69.8%), monazite (up to 35.6%) and zircon (up to 21.5%) (see PUA Announcement "First systematic exploration programme discovers significant rutile province in Cameroon" dated 4 February 2025).

-ENDS-

This announcement has been authorised by the Board of DY6.

### More information

Mr Daniel Smith	Mr Cliff Fitzhenry
Executive Chairman	Chief Executive Officer
<a href="mailto:dan.smith@dy6metals.com">dan.smith@dy6metals.com</a>	<a href="mailto:Clifford.fitzhenry@dy6metals.com">Clifford.fitzhenry@dy6metals.com</a>

### Competent Person Statement

The information contained in this announcement that relates to geological information and exploration results at the Central Rutile Project, is based on information compiled by Mr Clifford Fitzhenry, a Competent Person who is a Registered Professional Natural Scientist with the Council for Natural Scientific Professionals (SACNASP). Mr Fitzhenry is the Company's CEO and has sufficient experience which is relevant to the style of mineralization and type of deposit under consideration and to the activity which he is undertaking to qualify as a Competent Person as defined in the 2012 Edition of the 'Australasian Code for Reporting of Exploration Results, Mineral Resources and Ore Reserves'. Mr Fitzhenry consents to the inclusion in this announcement of the matters based on his information in the form and context in which it appears.

### Forward-Looking Statements

This announcement may include forward-looking statements and opinions. Forward-looking statements, opinions and estimates are only predictions and are subject to risks, uncertainties and assumptions which are outside the control of DY6 Metals Ltd. Past performance is not necessarily a guide to future performance and no representation or warranty is made as to the likelihood of achievement or reasonableness of any forward-looking statements, opinions or estimates. Actual values, results or events may be materially different to those expressed or implied in this announcement.

Given these uncertainties, readers are cautioned not to place reliance on forward-looking statements, opinions or estimates. Any forward-looking statements, opinions or estimates in this announcement speak only at the date of issue of this announcement. Subject to any continuing obligations under applicable law and the ASX Listing Rules, DY6 does not undertake any obligation to update or revise any information or any of the forward-looking statements opinions or estimates in this announcement or any changes in events, conditions or circumstances on which any such disclosures are based.

### Appendix:

**Table 1:** Licence tenement details of the DY6's Douala Basin HMS and Central Rutile Projects in Cameroon.

Tenement Name	Project Name	Holder	Application Date	Area	Granted Date
Mungo	Douala	Rhino Resources Ltd	29/06/2022	483km <sup>2</sup>	14/12/2022
Mbanga	Douala	Rhino Resources Ltd	29/06/2022	468km <sup>2</sup>	14/12/2022
Maleke	Douala	Rhino Resources Ltd	30/01/2024	491km <sup>2</sup>	N/A
Diwong	Douala	Rhino Resources Ltd	30/01/2024	484km <sup>2</sup>	N/A
Mbongo	Douala	Rhino Resources Ltd	30/09/2022	214km <sup>2</sup>	N/A
Edea Sud	Douala	Rhino Resources Ltd	29/06/2022	440km <sup>2</sup>	14/12/2022
Nganda	Central	Gorilla Mining Ltd	19/02/2025	396km <sup>2</sup>	N/A
Nsimbo	Central	Gorilla Mining Ltd	19/02/2025	495km <sup>2</sup>	N/A

Kombo	Central	Gorilla Mining Ltd	19/02/2025	460km <sup>2</sup>	N/A
Bounde	Central	Gorilla Mining Ltd	19/02/2025	425km <sup>2</sup>	N/A
Alamba	Central	Gorilla Mining Ltd	19/02/2025	348km <sup>2</sup>	N/A
Biyan	Central	Gorilla Mining Ltd	18/07/2025	261km <sup>2</sup>	N/A
Nlong	Central	Gorilla Mining Ltd	18/07/2025	371km <sup>2</sup>	N/A
Awae	Central	Weaver Resources Ltd	07/07/2025	462km <sup>2</sup>	N/A
Ayene II	Central	Weaver Resources Ltd	07/07/2025	497km <sup>2</sup>	N/A
Assi	Central	Weaver Resources Ltd	07/07/2025	488km <sup>2</sup>	N/A
Bissoua _II	Central	Weaver Resources Ltd	07/07/2025	441km <sup>2</sup>	N/A
Soleye	Central	Weaver Resources Ltd	23/06/2025	466km <sup>2</sup>	N/A
Soleye_W	Central	Weaver Resources Ltd	23/06/2025	496km <sup>2</sup>	N/A
Ayene	Central	Weaver Resources Ltd	07/07/2025	295km <sup>2</sup>	N/A