

Exploring WA's Premier Gold Provinces

Diggers and Dealers

4 - 6 August 2025

ASX code : HMG



Photo : UFF Soil Sampling Anderson - January 2025

Disclaimer and compliance statement

This presentation has been prepared by Hamelin Gold Limited ("Hamelin"). The information contained in this presentation is a professional opinion only and is given in good faith. Certain information in this document has been derived from third parties and though Hamelin has no reason to believe that it is not accurate, reliable or complete, it has not been independently audited or verified by Hamelin.

Any forward-looking statements included in this document involve subjective judgement and analysis and are subject to uncertainties, risks and contingencies, many of which are outside the control of, and maybe unknown to Hamelin. In particular, they speak only as of the date of this document, they assume the success of Hamelin's strategies, and they are subject to significant regulatory, business, competitive and economic uncertainties and risks. Actual future events may vary materially from the forward looking statements and the assumptions on which the forward looking statements are based. Recipients of this document ("Recipients") are cautioned to not place undue reliance on such forward-looking statements.

Hamelin makes no representation or warranty as to the accuracy, reliability or completeness of information in this document and does not take responsibility for updating any information or correcting any error or omission which may become apparent after this document has been issued.

To the extent permitted by law, Hamelin and its officers, employees, related bodies corporate and agents ("Agents") disclaim all liability, direct, indirect or consequential (and whether or not arising out of the negligence, default or lack of care of Hamelin and/or any of its Agents) for any loss or damage suffered by a Recipient or other persons arising out of, or in connection with, any use or reliance on this presentation or information.

The information in this report that relates to Exploration Results is based on information compiled by Mr. Peter Bewick who is a Member of the Australasian Institute of Mining and Metallurgy. Mr. Bewick hold shares and options in Hamelin. He is a full time employee of Hamelin and has sufficient experience which is relevant to the style of mineralisation under consideration to qualify as a Competent Person as defined in the 2012 Edition of the 'Australian Code for Reporting of Exploration Results, Mineral Resources and Ore Reserves'. Mr Bewick consents to the inclusion in the report of the matters based on the information compiled by him, in the form and context in which it appears.

Hamelin confirms that it is not aware of any new information or data that materially affects the information in the relevant ASX releases and the form and context of the announcement has not materially changed. Hamelin confirms that the form and context in which the Competent Person's findings are presented have not been materially modified from the original market announcements.

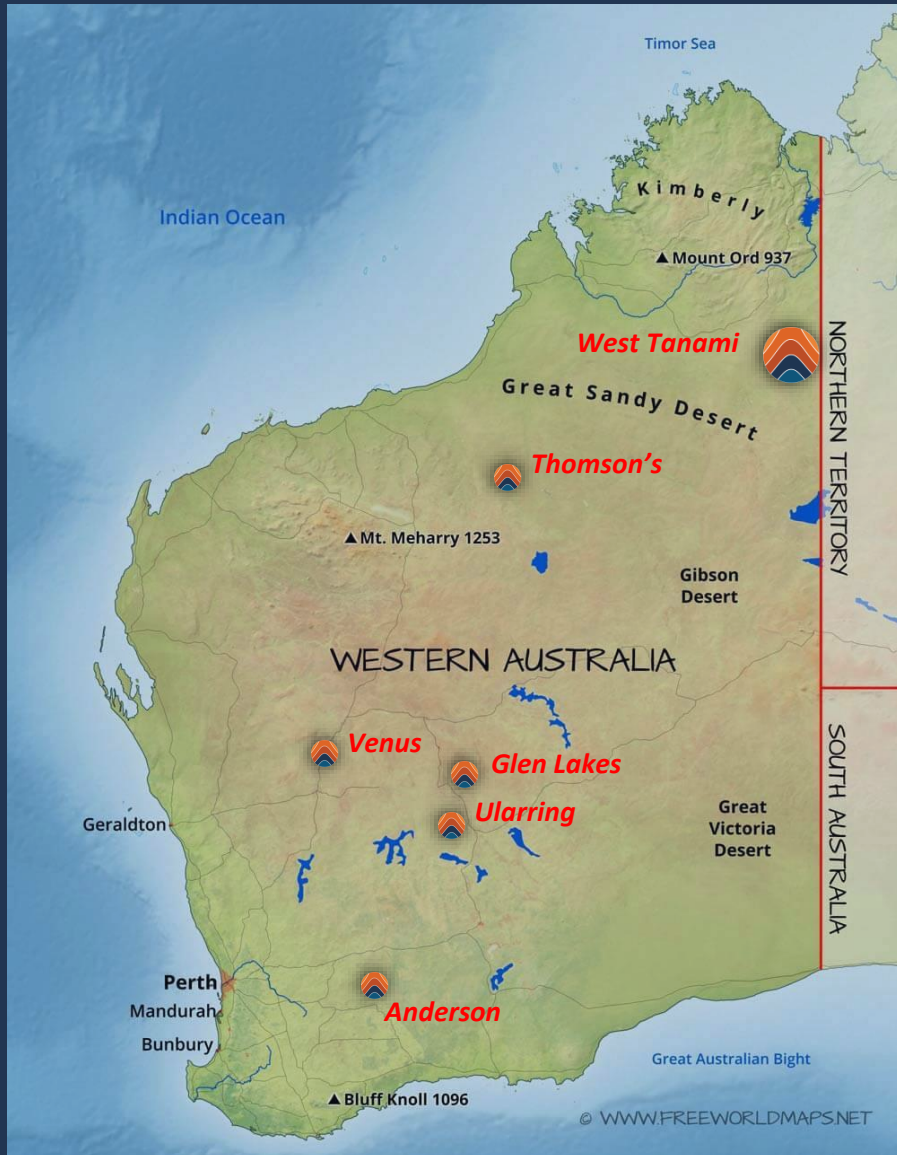
Newmont Tanami Operations Resource estimated from Newmont 2022 Reserve Release (www.newmont.com/investors/reports-and-filings/default) and the 'Newmont Tanami Operations AGES Paper April 2024' referred to in this presentation is Crawford A., Thebaud N., Masurel Q., Maidment D. 2024 Geology and Regional Setting of the Oberon Gold Deposit (https://geoscience.nt.gov.au/gemis/ntgsjspui/bitstream/1/92875/3/CrawfordAGES2024_paper.pdf)

This announcement has been approved for release by the Board of Hamelin.



Hamelin Gold

Corporate Shapshot



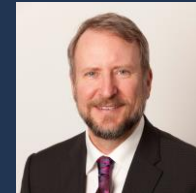
BOARD and KEY MANAGEMENT



Will Robinson
Non Executive Chairman
B.Comm, MAusIMM



Peter Bewick
Managing Director
B.Eng (Hons), MAusIMM



Justin Osborne
Non Executive Director
B.Sc (Hons), FAusIMM, MAICD



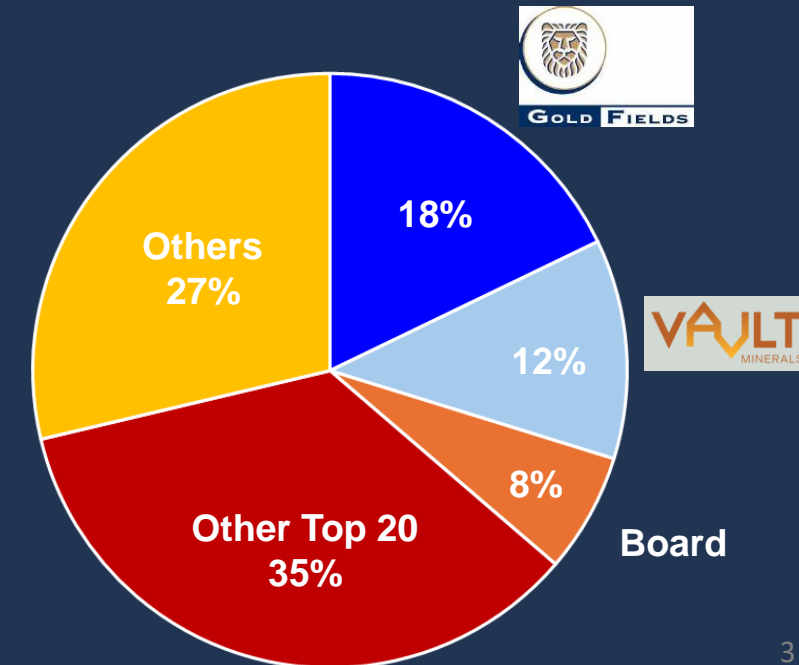
Philip Crutchfield KC
Non Executive Director
B.Comm, LL.B (Hons), LL.M LSE



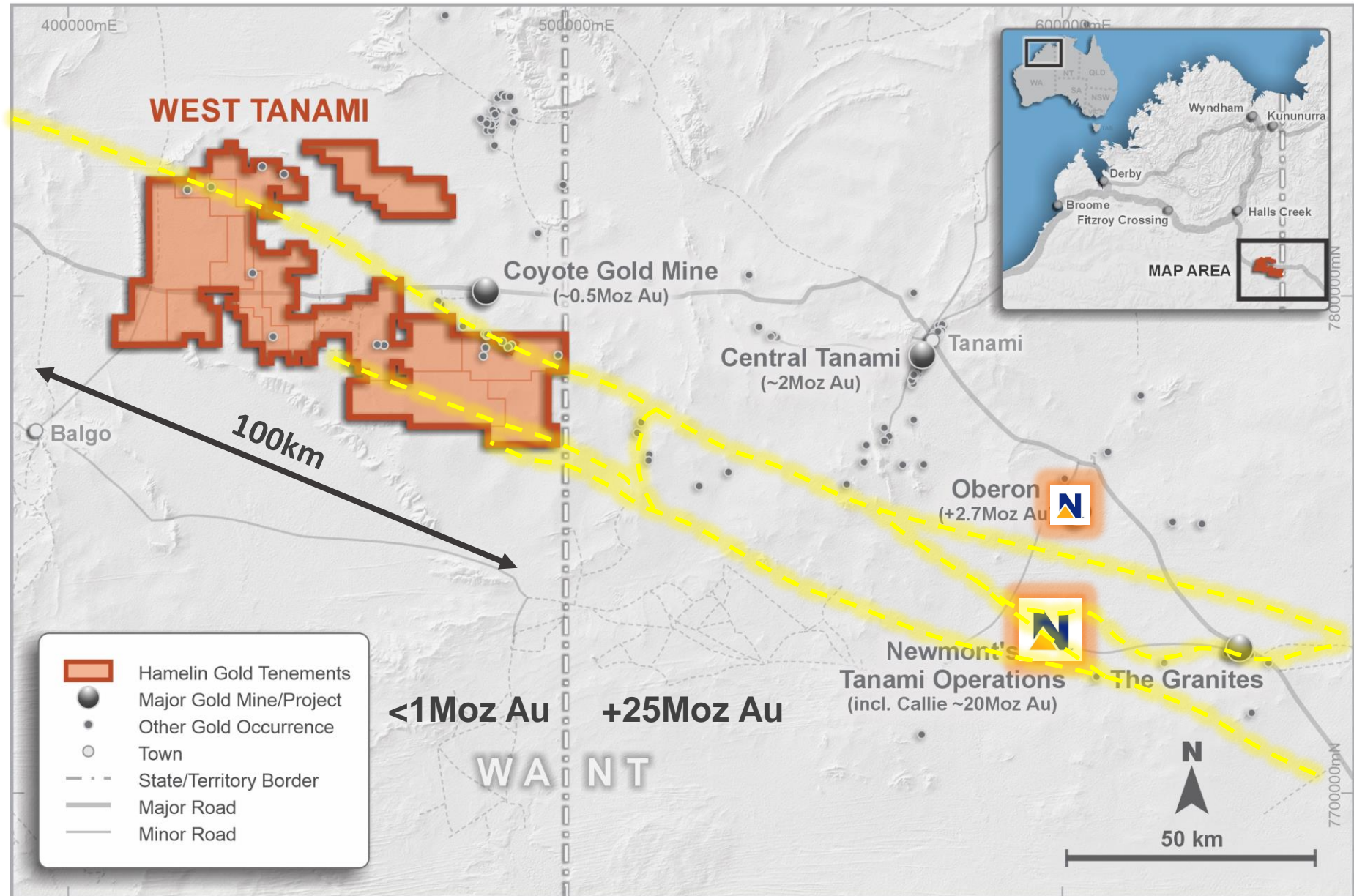
Clayton Davys
Exploration Manager
B.Sc (Hons)

CAPITAL STRUCTURE

Shares on Issue	196.9M
Employee and Broker options	18.1M
Market capitalisation (@ 5.9c)	\$11.6M
Cash (@ 30 June 2025)	~\$4.9M
Enterprise value	~\$6.7M



West Tanami: 2,200km² Project in a Tier 1 Goldfield



A New Dawn in the Tanami

Driven by new discoveries and endowment potential

Newmont

- US\$1.7B expansion including 1.46km shaft
- Lowest cost gold production globally (AISC US\$1,060¹)
- Expanding from ~500,000oz pa to +650,000oz pa
- Major new development project at Oberon +2.7Moz²

Northern Star

- Central Tanami JV with Tanami Gold
- A\$15M 2023/24 exploration budget³

Gold Fields

- Killi Resources JV – A\$13M earn-in
- 18% shareholding in Hamelin Gold



TE2 Headframe – Newmont's Tanami Gold Operations

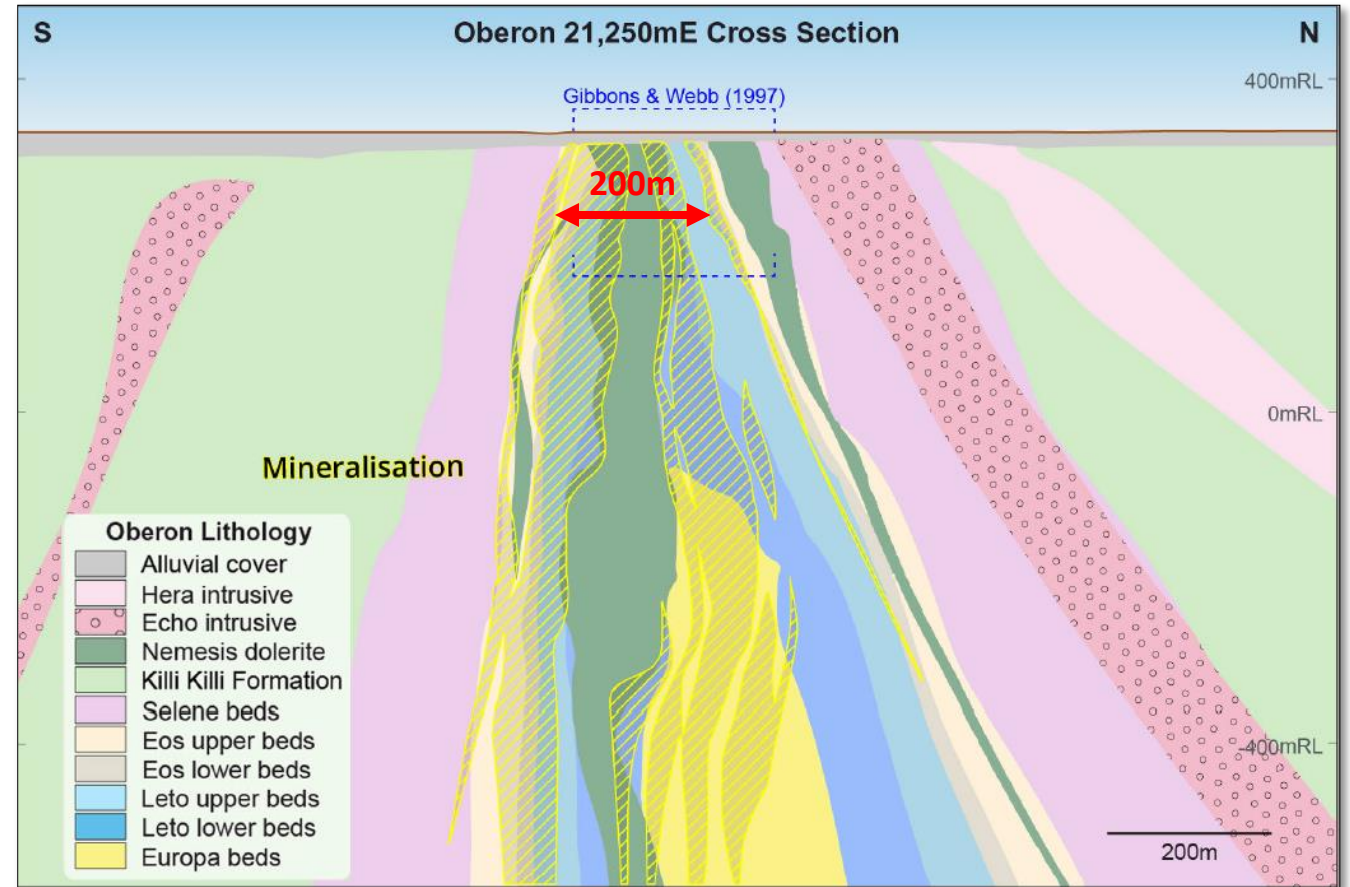


Refer to Newmont 2023 Annual Report¹ and Newmont Tanami Operations AGES Paper Crawford et al 2024² and Tanami Gold ASX Announcement 27 June 2023³

Newmont's Oberon Discovery

2.7Moz and growing

- Latest major development project in the Tanami for Newmont
- Single point geochemical anomaly (2ppb Au) and single EOH auger anomaly (28ppb Au) undercover
- Broad (+2km) alteration footprint
- Hosted within and on the margins of a tightly folded dolerite unit
- New prospective stratigraphic sequence identified – Mt Charles Formation
- Intense drilling program ongoing with expectations of significant resource growth



Oberon Deposit cross section

New Technologies for Undercover Terrains



Target Generation : Prediction and Detection

*New Geophysical Datasets : Airborne
EM, gravity and magnetics*

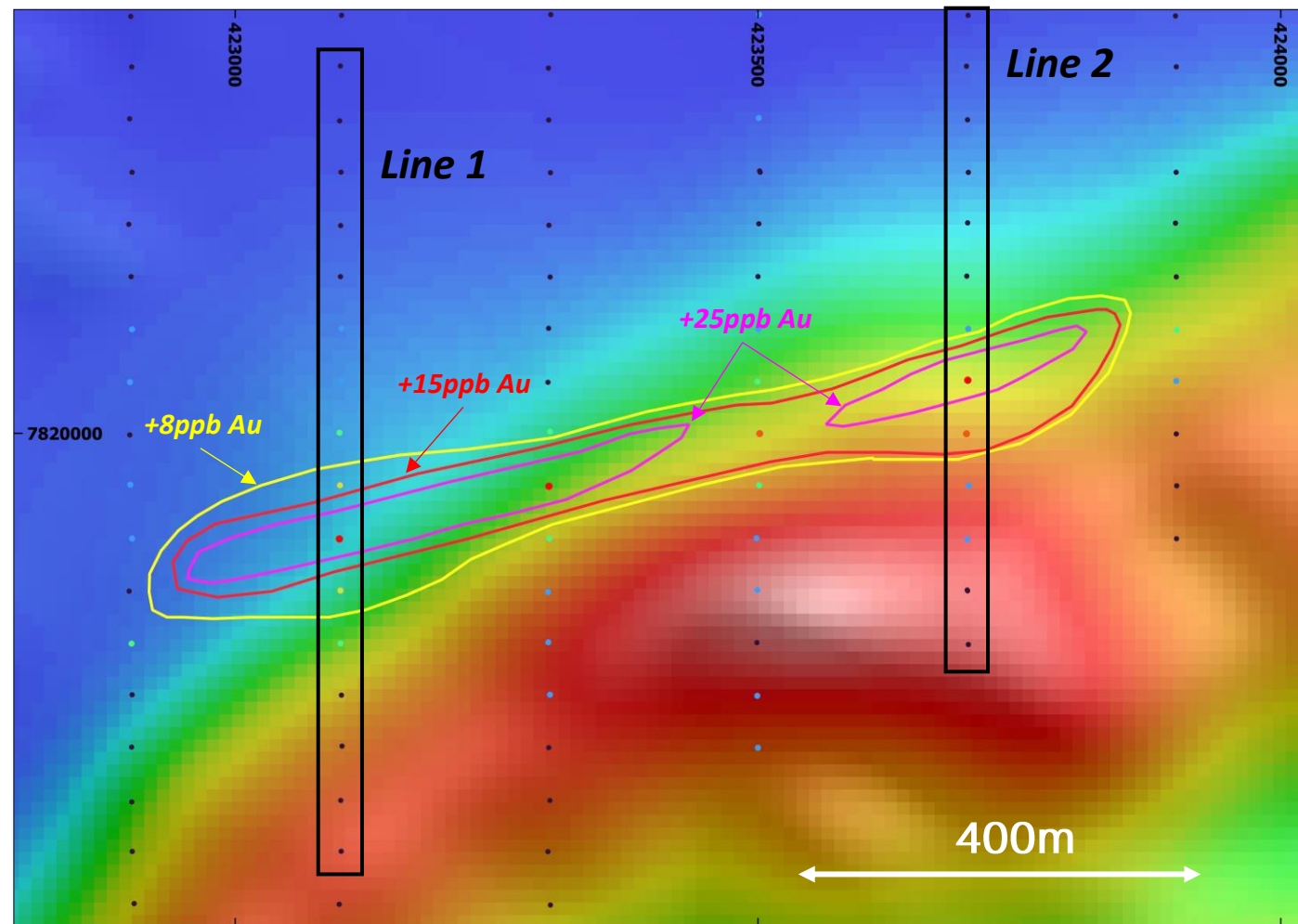
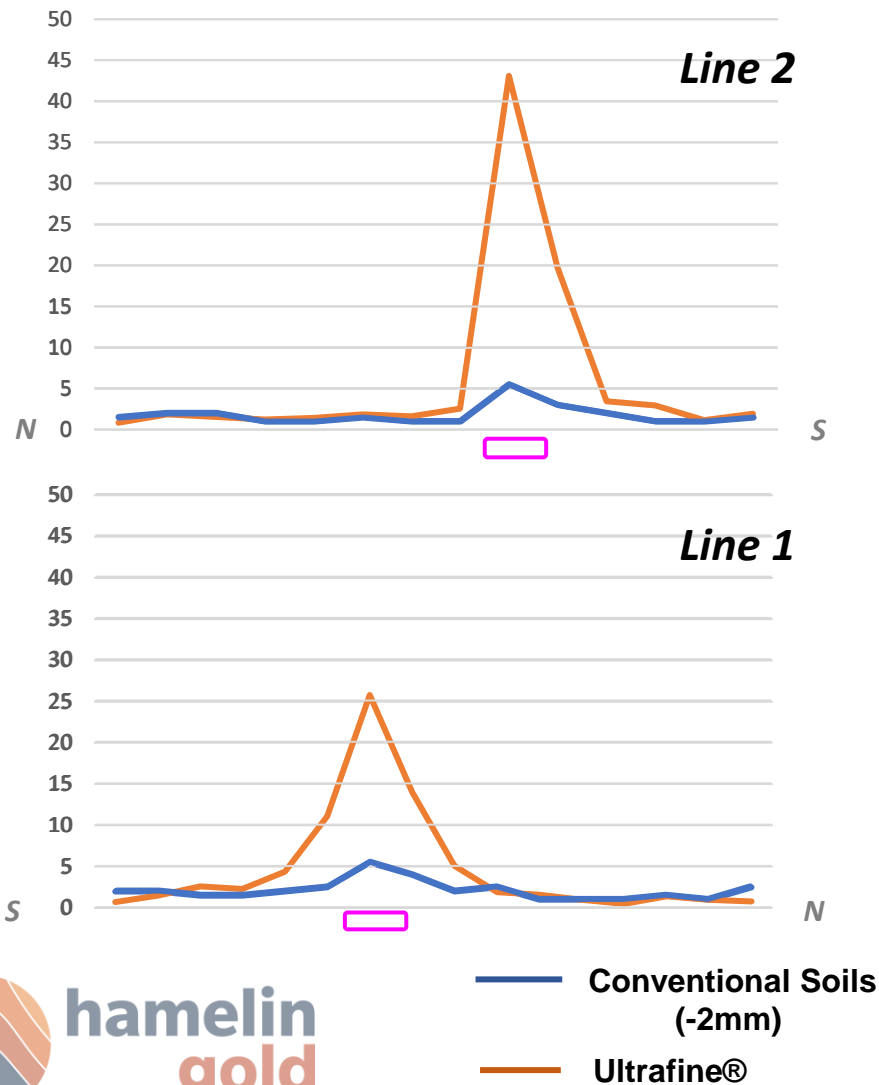


*New Geochemical Tools : CSIRO
developed Ultrafine[®] soils*



Amplifying Gold Signatures Undercover

Conventional Soils vs New Ultrafine® Technology



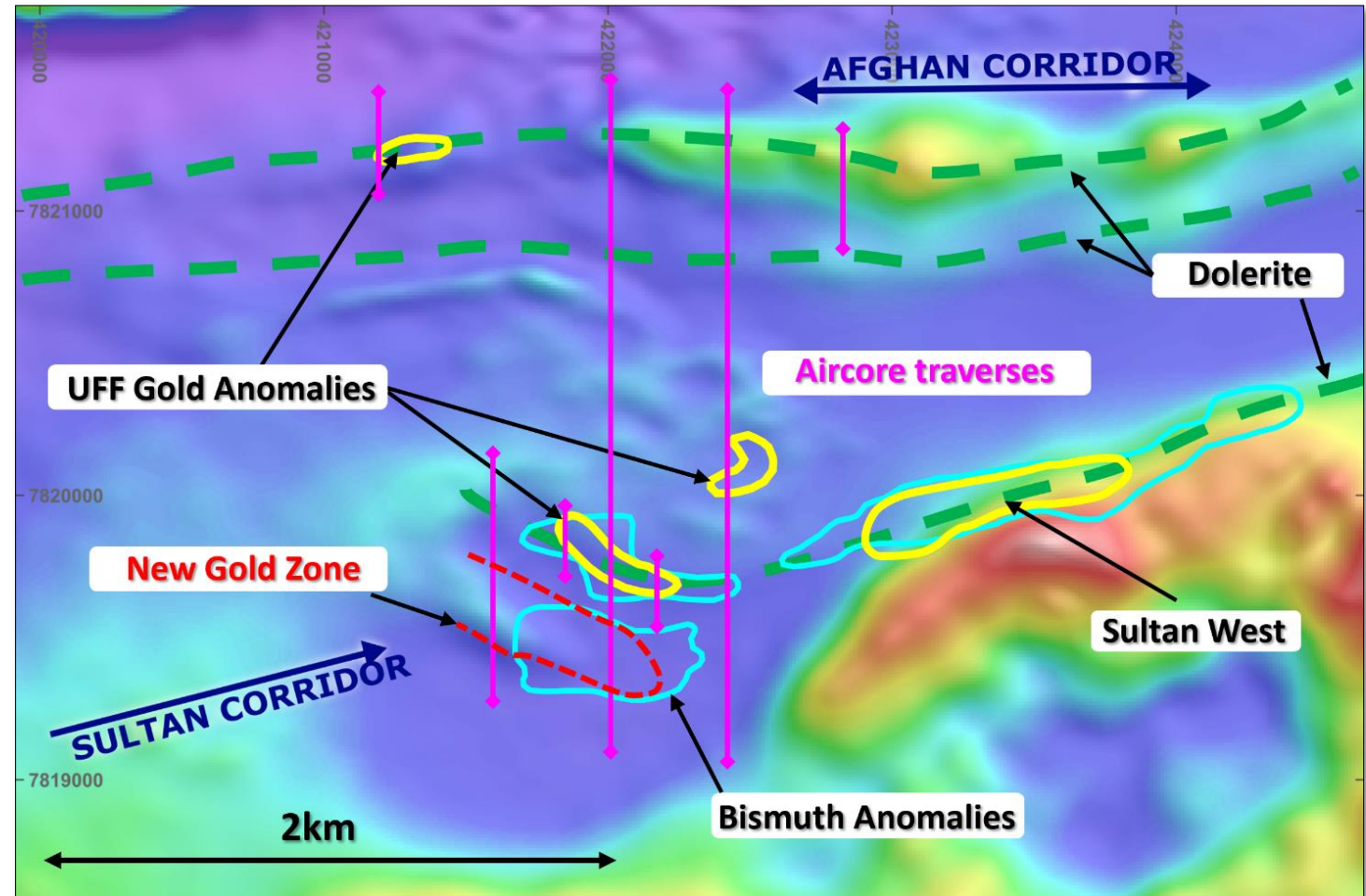
Sultan West – Ultrafine Soil Results on magnetics background



Jazz Prospect

Successful application of new technology

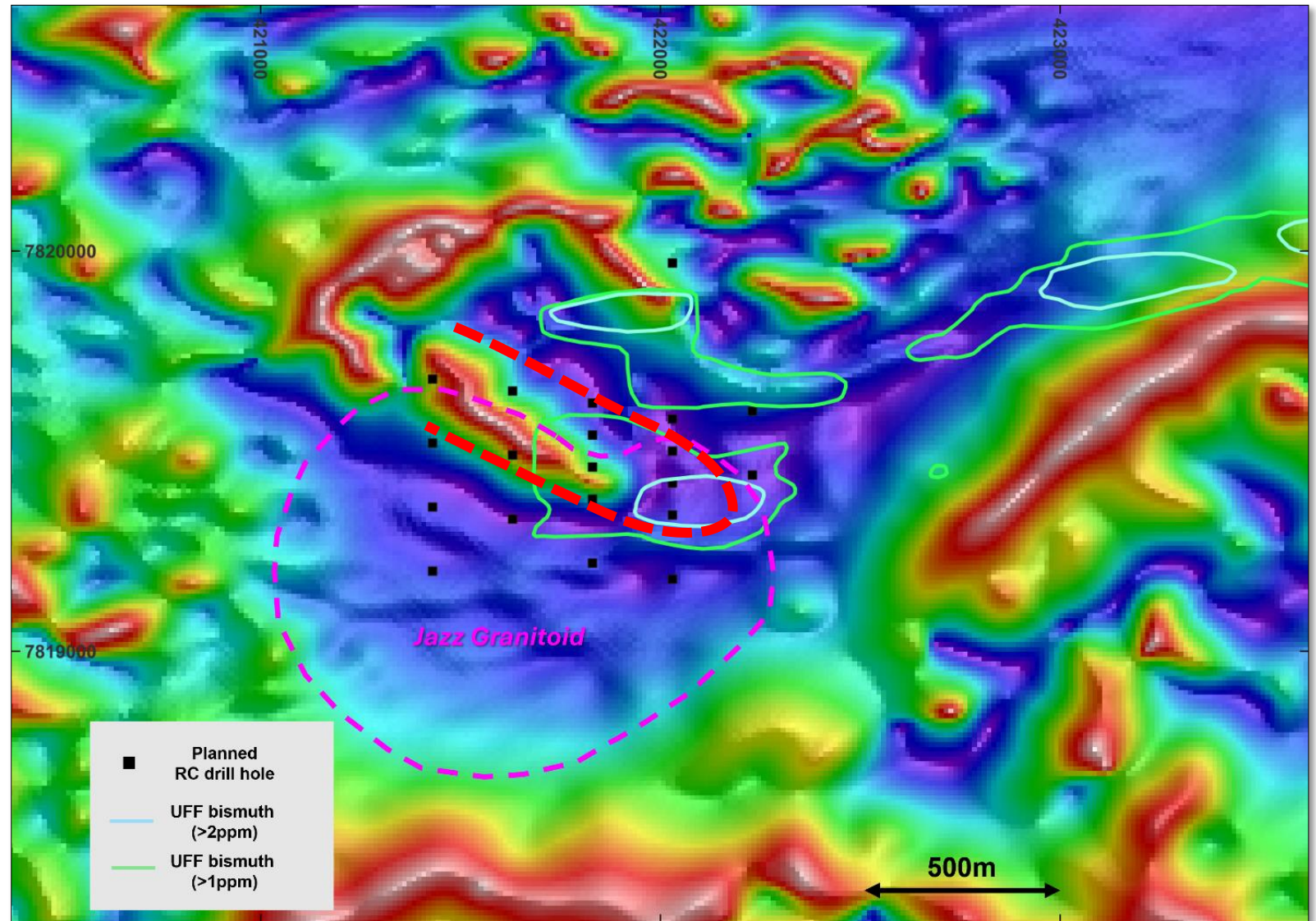
- Complex folded and faulted geology containing host mafic unit
- Gold + Bismuth 'mineralization signature' defined in UFF program
- Large hydrothermal system mapped out in multiple elements As, Mo, W
- Favourable structural architecture
- Initial aircore program completed in late 2024 identifies new gold zone
- RC drilling in progress



Jazz Prospect – Drill traverses and Ultrafine anomalies on magnetics

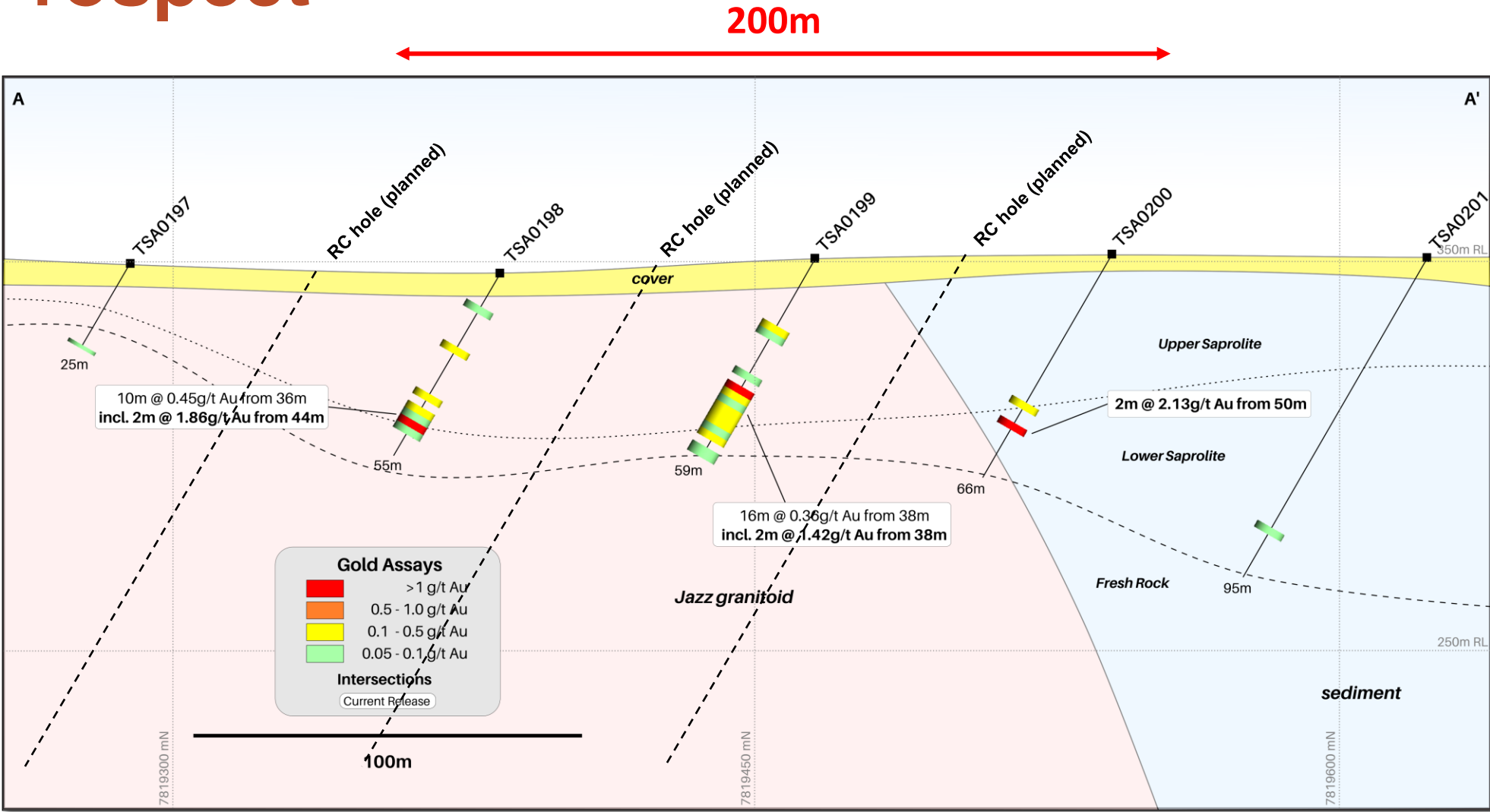
Jazz Prospect

- EIS co-funded drill program in progress
- Initial 20 hole RC program focusing on the northern margin of the Jazz Granitoid
- First bedrock drilling of this large scale gold target
- Diamond drilling follow up proposed for late 2025



Jazz Prospect – RC drill plan and UFF anomalies on magnetics

Jazz Prospect

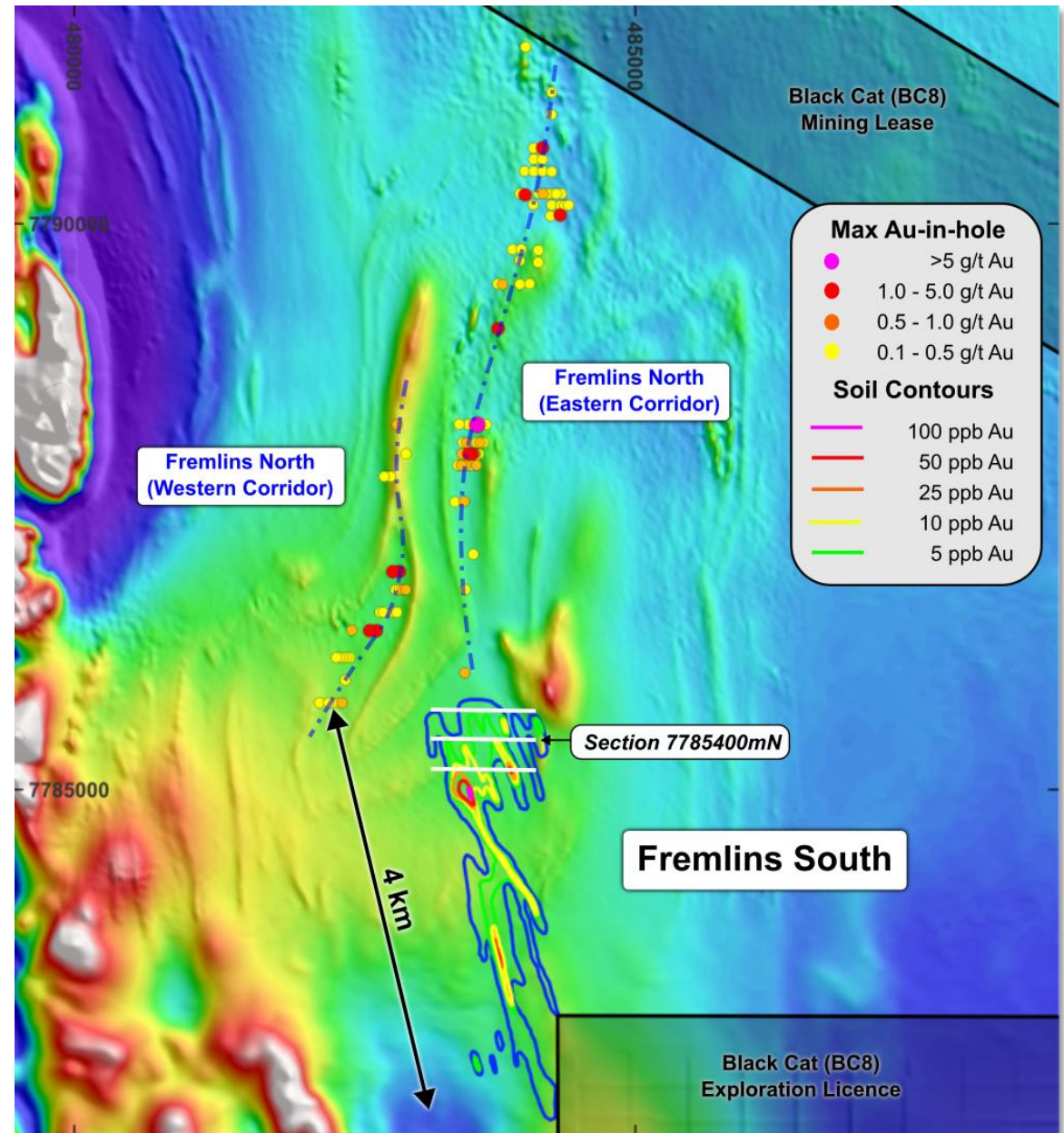


Fremlins Prospect

- 9 kilometre long gold system defined by geochem, shallow drilling
- Southern 4 kilometres ineffectively tested with 7 metre deep posthole RAB drilling
- Aircore drilling identified anomalism below shallow holes – January 2024
- 4 hole RC program defines broad zones of gold mineralisation in fresh rock August 2024
- Template for assessing similar ineffectively drilled targets across the West Tanami
- EIS co-funded RC drilling completed in May 2025 (2,162m) – assays pending



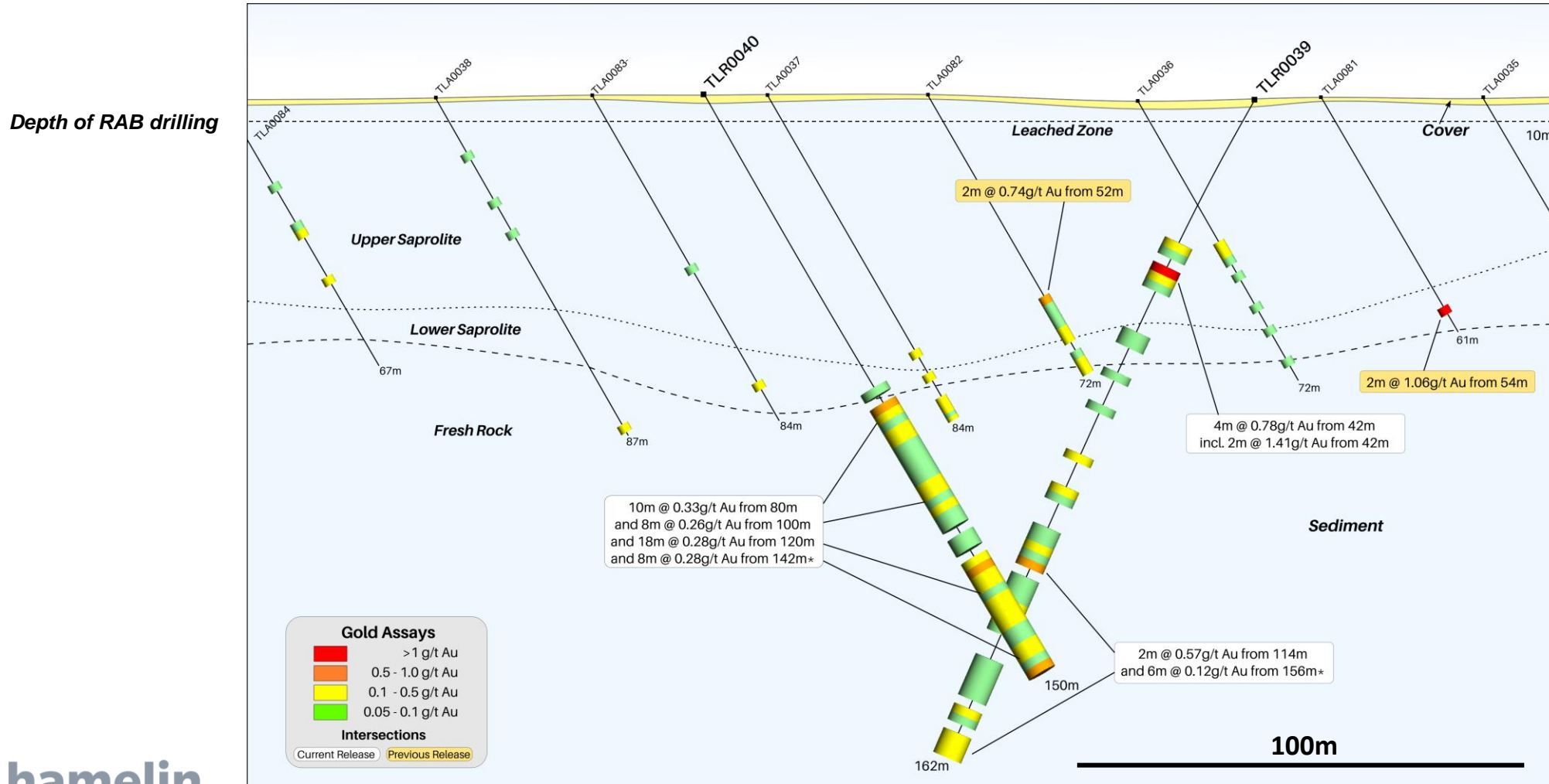
Refer ASX Announcements dated 26 August 2024



Geochemistry, max Au-in-hole on detailed TMI magnetics

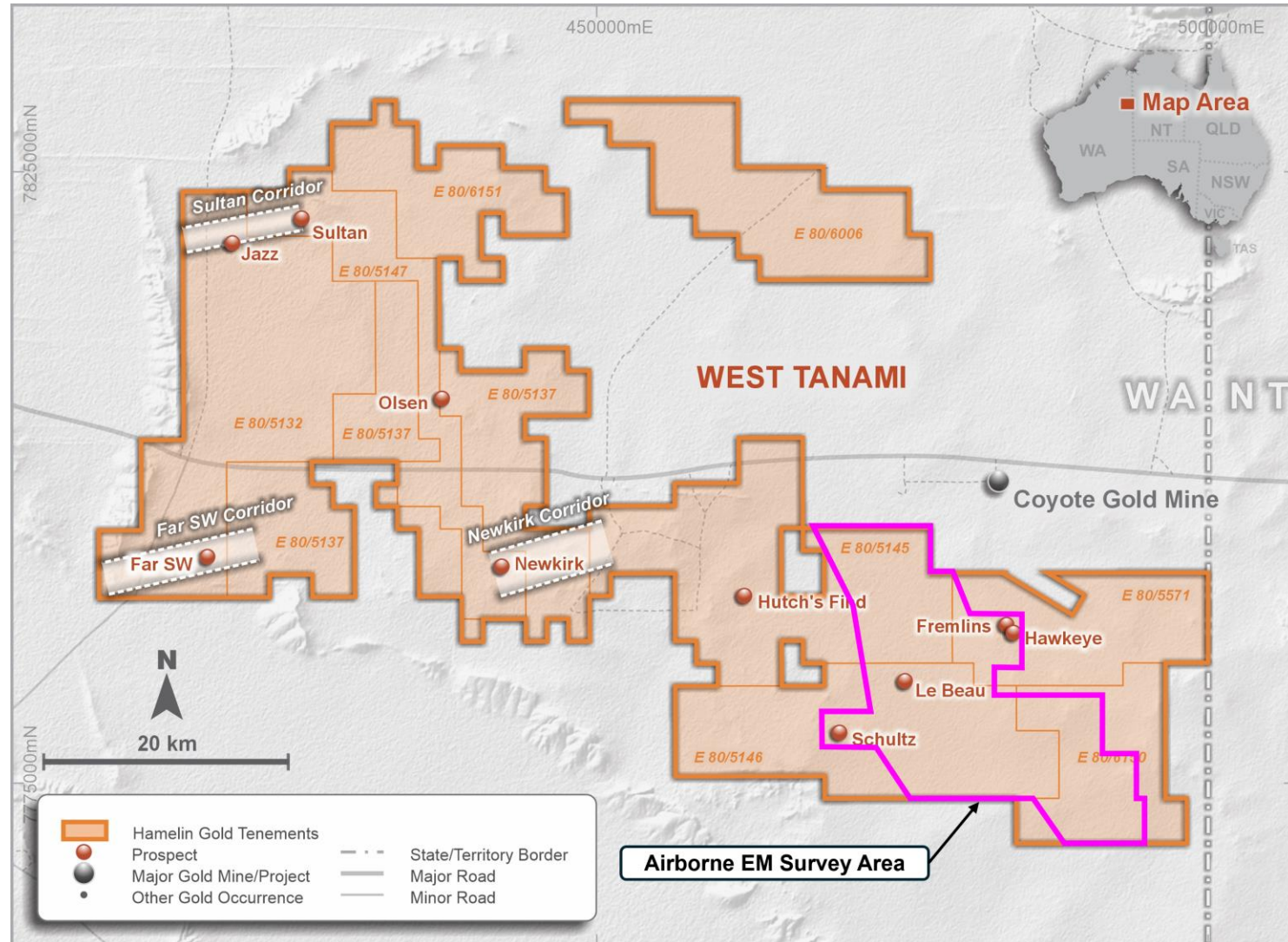
Fremlins Prospect

Historical shallow, ineffective drilling



Le Beau copper-nickel-PGE's

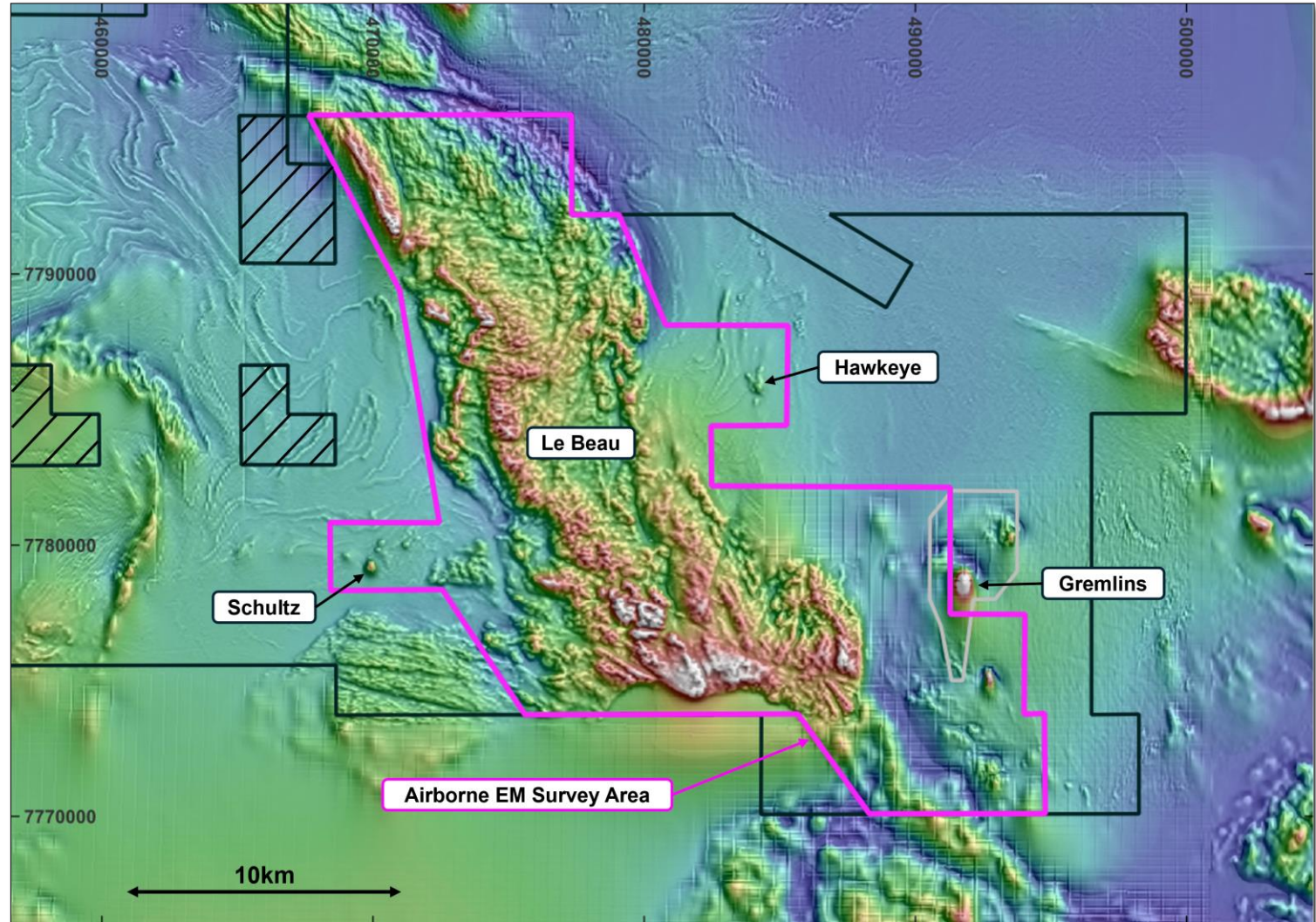
- WA Government Exploration Incentive Scheme ("EIS") co-funded Airborne EM geophysical survey
- Survey testing for bedrock conductors within mafic-ultramafic intrusions that are prospective for copper-nickel-PGE sulphide mineralisation
- Potential first identified at Hawkeye in 2023, new deposit type for the Tanami District
- Focus of a BHP Xplor funded investigation in 2024



West Tanami EIS co-funded Airborne EM survey area on Leasing

Le Beau copper-nickel-PGE's

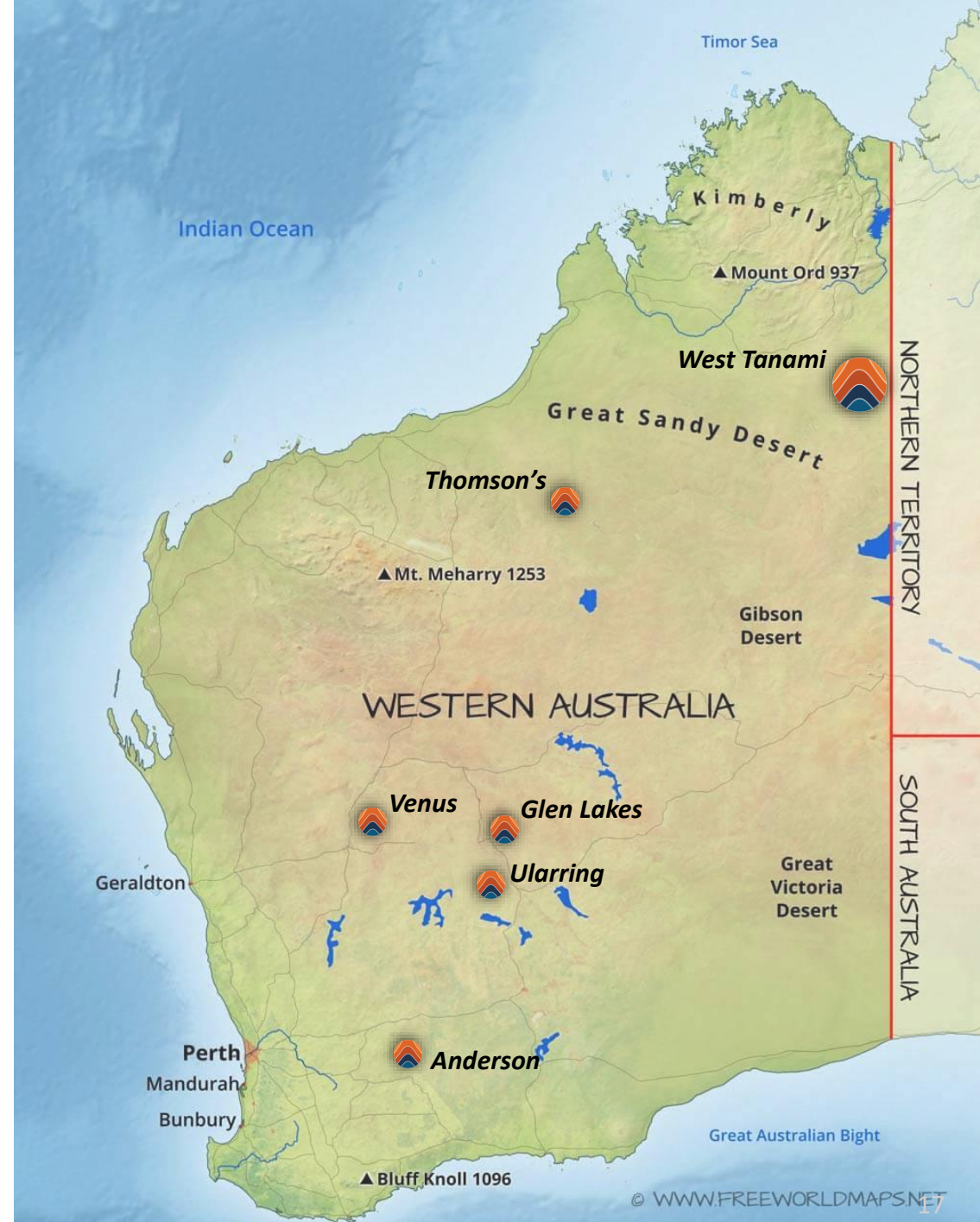
- Xplor studies confirmed the presence of all the key elements of the Mineral System model for intrusion related Cu-Ni-PGE deposits e.g. Nebo-Babel, Voisey's Bay
- Area considered ideal environment for the use of AEM to define bedrock conductors
- Co-funded grant to provide up to \$150,907 to complete the AEM survey
- AEM results to be reported September 2025 with drilling of priority targets planned for late 2025



Airborne electromagnetic survey area on detailed TMI magnetics

Yilgarn Projects

- **Ularring (Riverina South) – 61km²**
 - Adjacent to Gorilla Mining's Mulwarrie project and 18km south of Ora Banda's Davyhurst project
 - 2,216m RC drilling defined moderately anomalous gold zone
 - Modest discovery potential remains - Divestment opportunity
- **Anderson (30km North of Hyden) - 500km²**
 - UFF soil survey completed (3 phases)
 - Limited rock chip sampling completed
 - Landowner discussions commenced with plans to drill post cropping in Dec 2025
- **Venus (15km east of Cue) – 200km²**
 - Application covering the southern extension of the Tuckabianna and Comet gold trends
- **Glen Lakes (South of Bronzewing) – 55km²**
- **Thomson's (5km NW of Telfer) – 25km²**

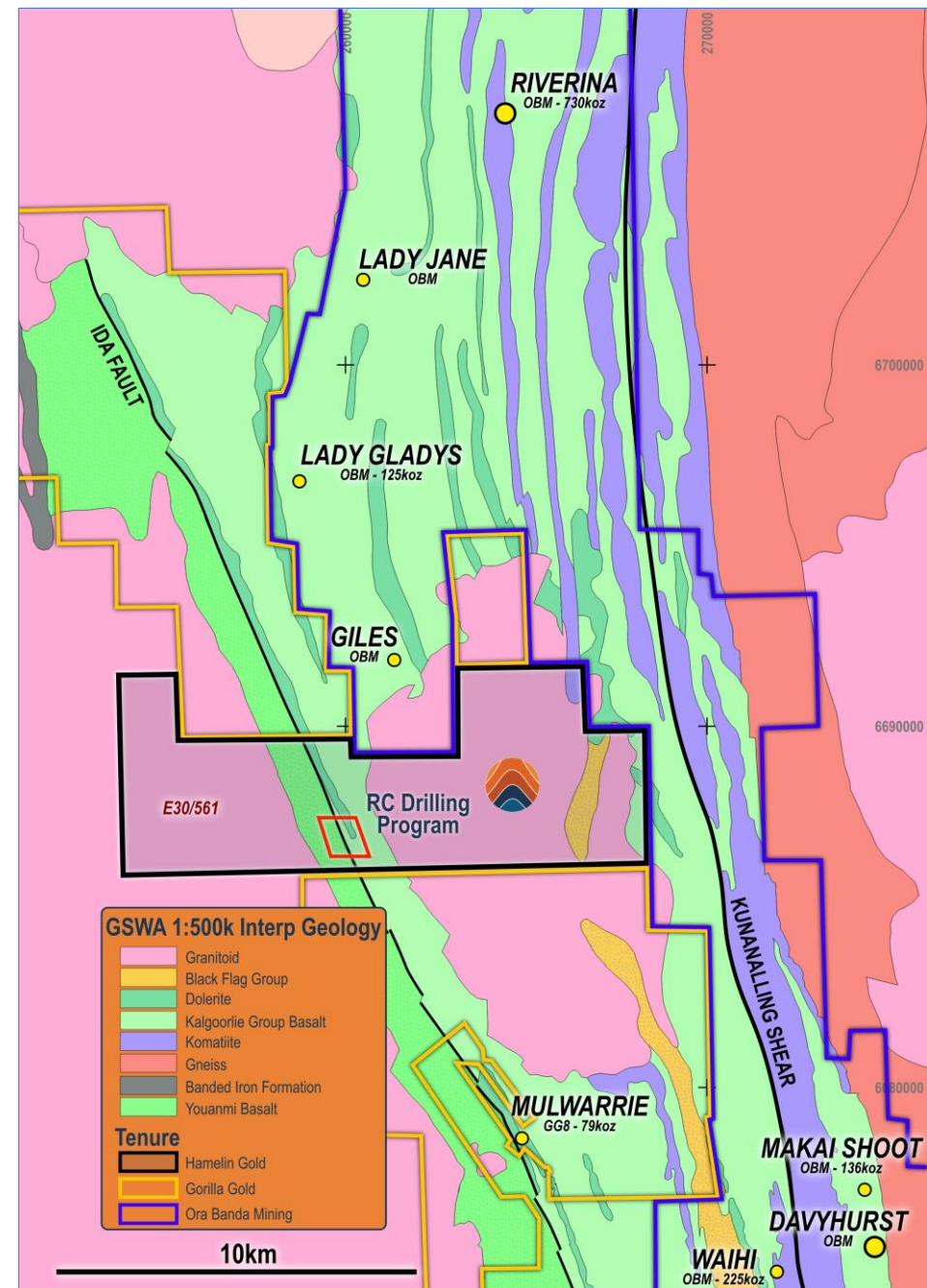


Ularring project

- 130km northwest of Kalgoorlie
- Under-explored 4km long section of the Ida Fault
- Greenstone lithologies targeted for surface sampling program and analysis utilising UFF technology
- Located between Riverina (18km north) and Davyhurst (18k south)
- First pass RC drilling encountered gold anomalism within the core of UFF anomaly
- Potential remains for modest gold discovery – Divestment opportunities being evaluated



Refer ASX Announcements dated 24 March 2025



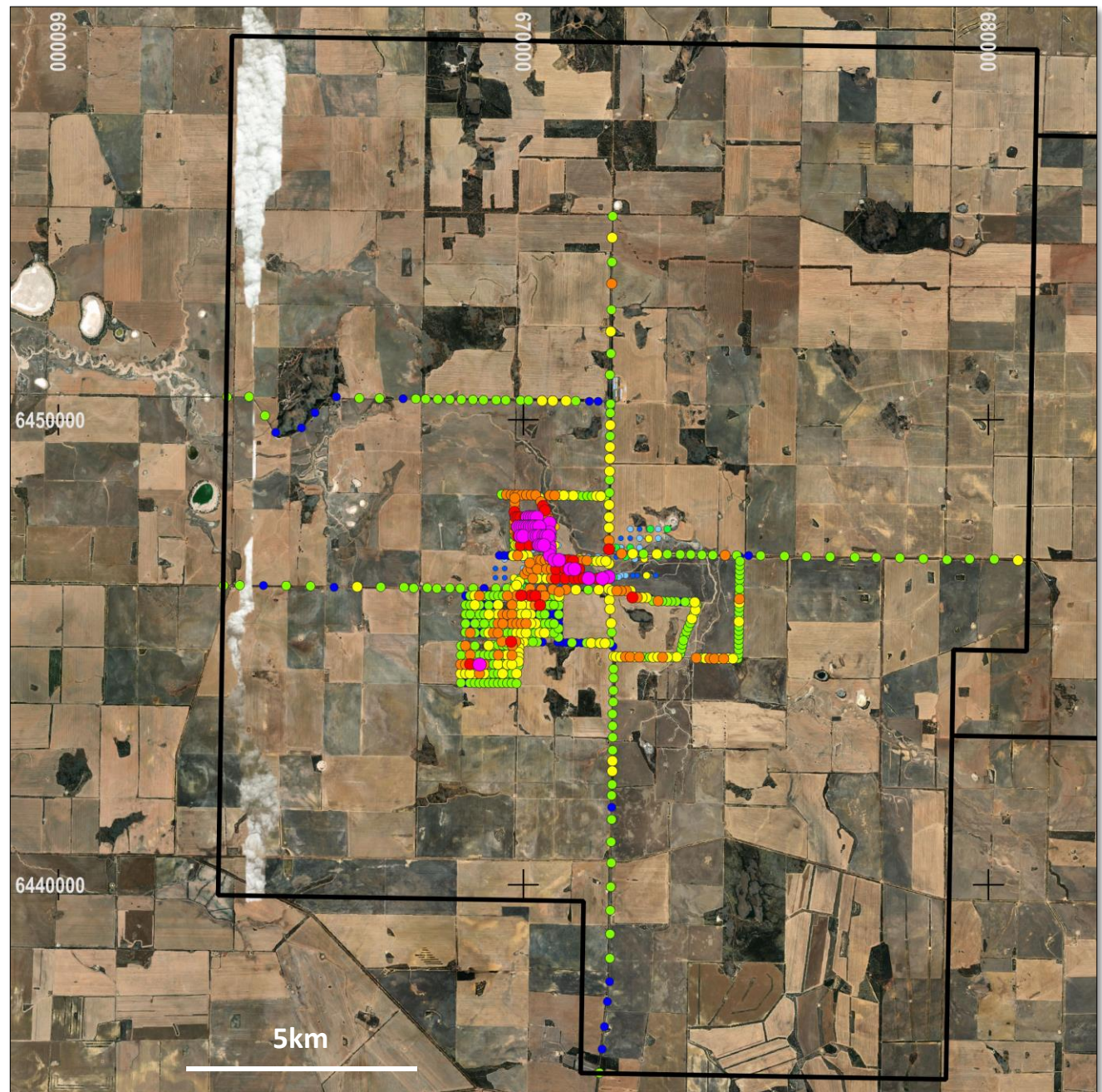
Ularring Project – Regional geology, gold resources and RC drill location

Anderson project

- Ideal trial site for the evaluation of Ultrafine® analysis of soil samples in the Wheatbelt
 - Extensive shallow sand and thicker channel cover
 - Regional calcrete gold anomaly
 - Aircore drilling defined bedrock gold mineralisation
- Phase 1 - Sampling along roadsides, fence lines and internal tracks
- Phase 2 – Systematic sampling across 3km long bedrock gold corridor



Refer ASX Announcements dated 29 January 2025



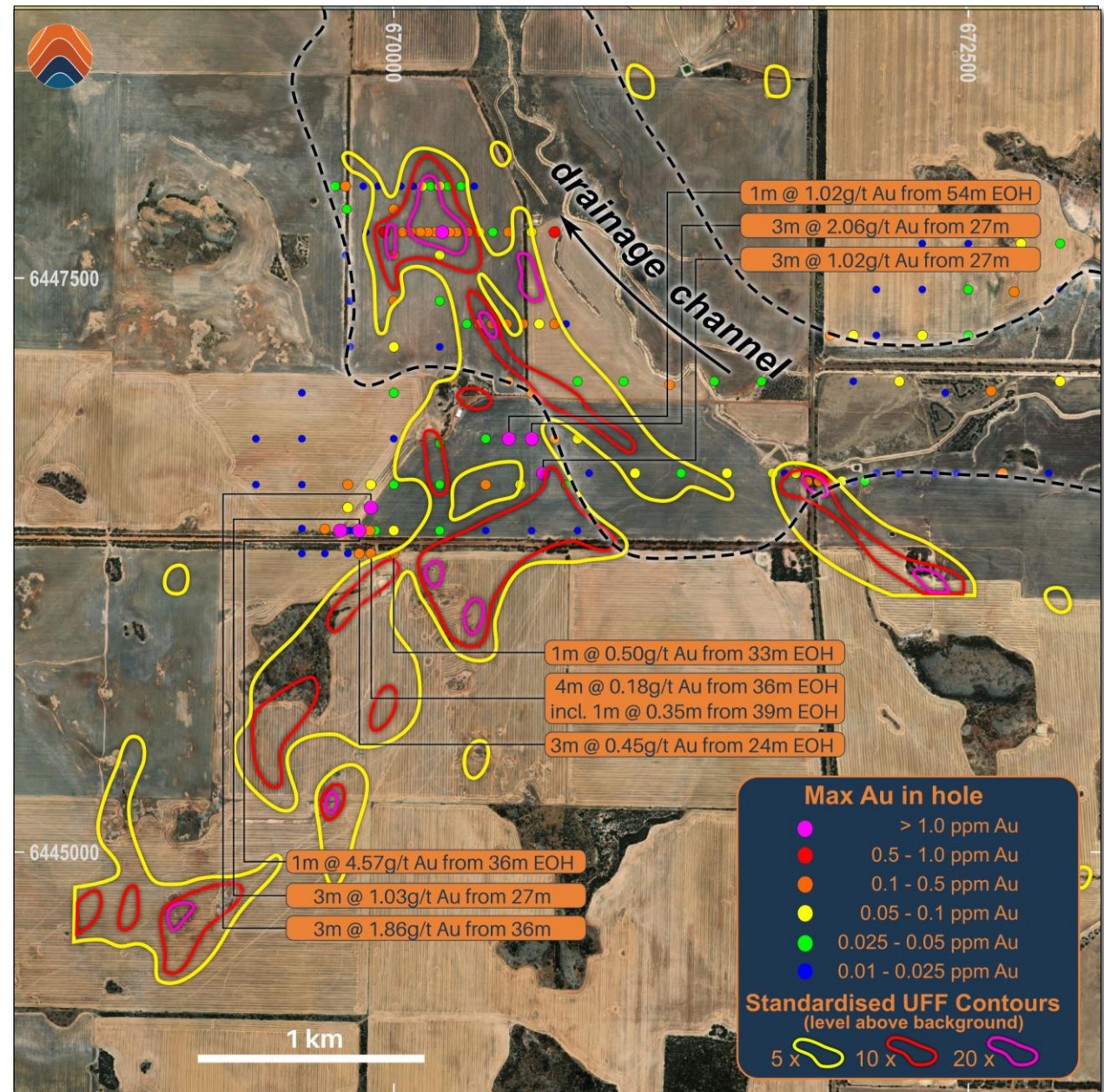
Anderson Project – UFF Results

Anderson project

- Interrogation of multi-element UFF data shows anomalies derived from bedrock source and anomalies in transported material
- Historical drill data confirms interpretation
- Strong EOH gold within 'bedrock target' corridor
- New application to the east increases project to ~500km²
- Stratigraphic diamond drilling planned (late 2025)



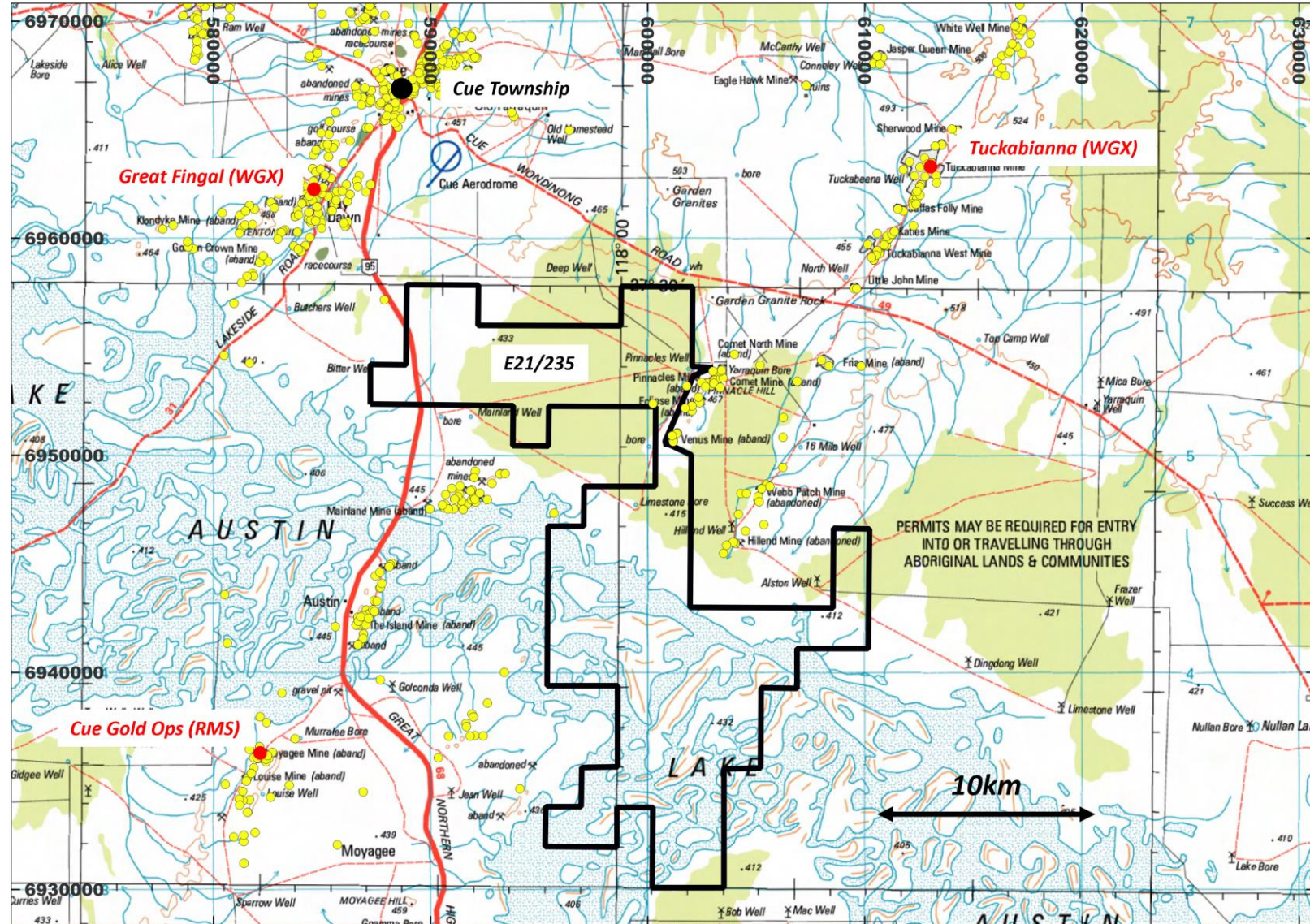
Refer ASX Announcements dated 29 January 2025



Anderson Project – UFF program and Historical Drilling

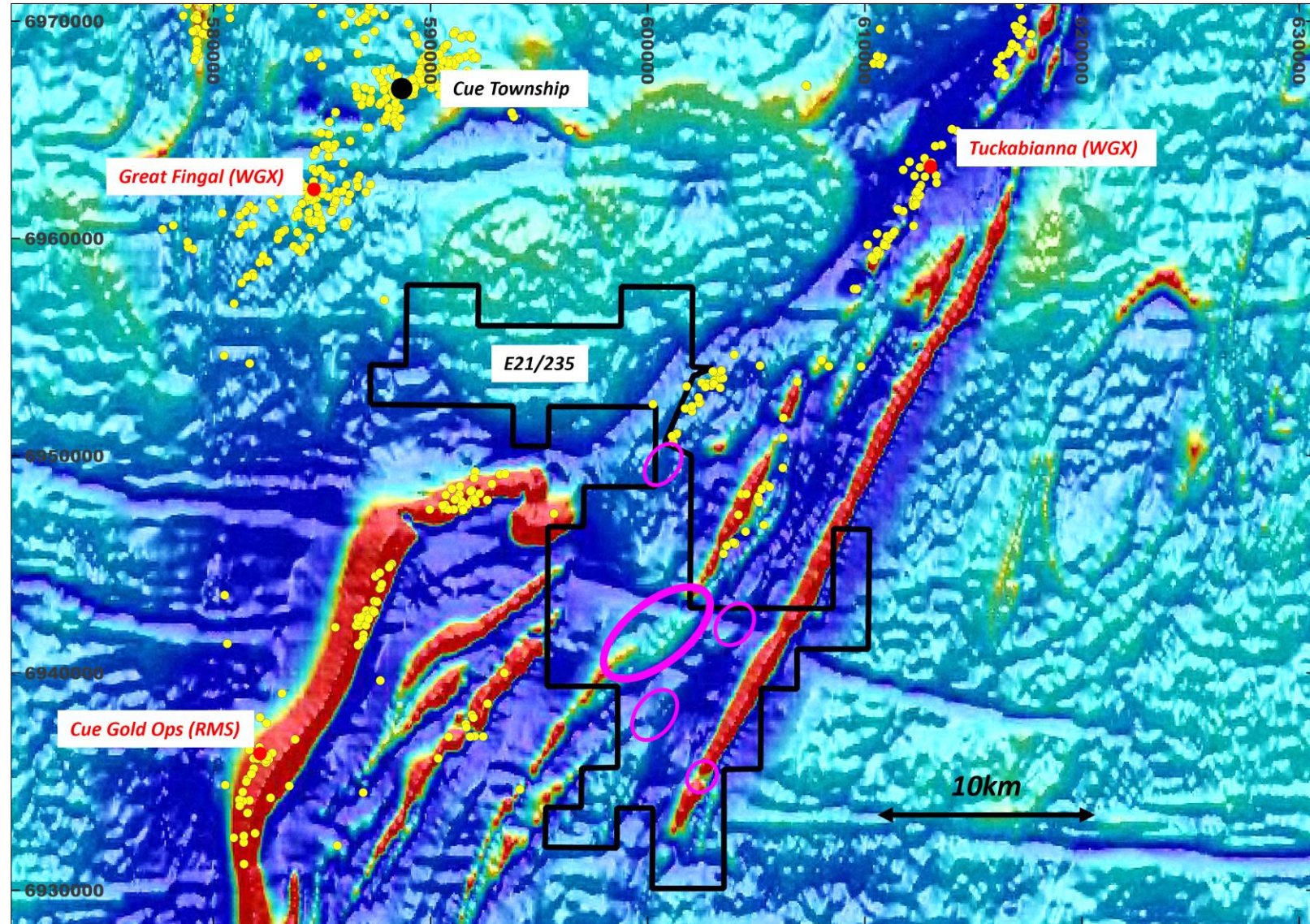
Venus Project

- Regional scale gold opportunity (~200km²)
- Predominantly under cover
- Along strike of Tuckabianna and Comet gold trends
- Very little exploration activity over main targets
- Data compilation and interpretation ongoing
- Tenement progressing to grant (~2H 2025)



Venus Project

- Flexure in NNE trending structure coincident with area of magnetic destruction on Tuckabianna trend
- Southern strike extension of the Comet gold corridor
- Interpreted fold closure and structural termination of fold axis
- Breaks along BIF units



Timeline of Activities 2025

- | | | |
|---|-----------------|---|
| • RC drilling program (2,216m) – Ularring project | March 2025 | Completed |
| • Heritage Survey – West Tanami | April 2025 | Completed |
| • RC drilling program (~4,500m) – West Tanami | | |
| • Fremlins South (EIS co-funded) | May 2025 | Completed
<i>(Assays pending)</i> |
| • Jazz prospect (EIS co-funded) | July 2025 | In Progress |
| • West Tanami Airborne EM (EIS co-funded) | August 2025 | |
| • Aircore drilling (~5,000m) – West Tanami | Sept - Oct 2025 | |
| • Jazz (EIS co-funded) diamond drilling (~1,000m) | Oct - Nov 2025 | |
| • Anderson diamond drilling (~1,200m) | Dec 2025 | |



Contact

Telephone: +61 8 9486 9455

Website: www.hamelingold.com.au

Email: contact@hamelingold.com.au

Suite 2, 1 Alvan Street

Subiaco WA 6008

ASX: HMG

