

High Grade Copper and Gold

Significant and immediate growth through the drill bit

- **Building world-class scale** – Already **1Mt of contained copper** and **550koz of gold**
(24.4Mt for 460kt Cu and 200koz Au contained in M&I plus 34.5Mt for 690kt Cu and 350koz Au contained in Inferred)
- **Rapid Growth** – 8 drill rigs turning
- **Dominant Position** – A major copper and gold mineral district
- **Exceptional infrastructure** – operational underground, shaft, processing plant, deep water port, low-cost hydro power and skilled workforce
- **Environmentally Permitted** – conditionally released from further environmental assessment
- **Canada a Tier one mining jurisdiction**

6 August 2025

DISCLAIMER, COMPLIANCE & CAUTIONARY STATEMENTS

This presentation has been prepared by FireFly Metals Ltd (**Company**) based on information from its own and third party sources. No party other than the Company has authorised or caused the issue, lodgement, submission, dispatch or provision of this presentation, or takes any responsibility for, or makes or purports to make any statements, representations or undertakings in this presentation.

To the maximum extent permitted by law, the Company and its related bodies corporate, and their respective directors, officers, employees, agents and advisers:

- (i) disclaim all responsibility and liability (including, without limitation, any liability arising from fault, negligence or negligent misstatement) for any expenses, losses, damages or costs incurred by you (including consequential or contingent loss or damage) arising from this presentation or reliance on anything contained in or omitted from it or otherwise arising in connection with this presentation, including any errors or omissions however caused, lack of accuracy, completeness, currency or reliability, or any reliance you or any other person may place on this presentation or its accuracy, completeness, currency or reliability;
- (ii) disclaim any obligations or undertaking to release any updates or revision to the information in this presentation to reflect any change in expectations or assumptions; and
- (iii) do not make any representation or warranty, express or implied, as to the accuracy, reliability, completeness of the information in this presentation or that this presentation contains all material information about the Company, or that a prospective investor or purchaser may require in evaluating a possible investment in the Company or acquisition of shares in the Company (**Shares**), or likelihood of fulfilment of any Forward-looking Statement (defined below) or any event or results expressed or implied in any Forward-looking Statement.

NO NEW INFORMATION OR DATA – GREEN BAY AND PICKLE CROW PROJECTS

This presentation contains references to the Mineral Resource Estimate at the Green Bay Project which have been extracted from the Company's ASX announcement dated 29 October 2024, titled "Resource increases 42% to 1.2Mt of contained metal at 2% Copper Eq". Refer to Appendix 1 for a full break-down of the Green Bay Mineral Resource Estimate. Also refer to the Technical Reports for the Ming Copper Gold Mine and Little Deer Copper Project available on SEDAR+.

This presentation also contains references to the Inferred Mineral Resource Estimate at the Pickle Crow Project (currently 11.9Mt at 7.2g/t for 2.8Moz gold) which have been extracted from the Company's ASX announcement dated 4 May 2023, titled "High-Grade Inferred Gold Resource Grows to 2.8Moz at 7.2g/t".

Metal equivalents for the Mineral Resource Estimate mineralisation at the Green Bay Project have been calculated at a copper price of US\$8,750/t, gold price of US\$2,500/oz and silver price of US\$25/oz. Individual Resource grades for the metals are set out at Appendix 1 of this presentation. Copper equivalent was calculated based on the formula $CuEq(\%) = Cu(\%) + (Au(g/t) \times 0.82190) + (Ag(g/t) \times 0.00822)$. Metallurgical factors have been applied to the metal equivalent calculation. Copper recovery used was 95%. Historical production at the Ming Mine has a documented copper recovery of ~96%. Precious metal metallurgical recovery was assumed at 85% on the basis of historical recoveries achieved at the Ming Mine in addition to historical metallurgical test work to increase precious metal recoveries.

Metal equivalents for drilling and exploration results have been calculated at a copper price of US\$8,750/t, gold price of US\$2,500/oz, silver price of US\$25/oz and zinc price of US\$2,500/t. Individual grades for the metals are set out at Appendix 1 of this presentation. Metallurgical factors have been applied to the metal equivalent calculation. Copper recovery used was 95%. Historical production at the Ming Mine has a documented copper recovery of ~96%. Precious metal metallurgical recovery was assumed at 85% based on historical recoveries achieved at the Ming Mine in addition to historical metallurgical test work to increase recoveries. Zinc recovery is applied at 50% based on historical processing and potential upgrades to the mineral processing facility. Copper equivalent was calculated based on the formula $CuEq(\%) = Cu(\%) + (Au(g/t) \times 0.82190) + (Ag(g/t) \times 0.00822) + (Zn(\%) \times 0.15038)$.

In the opinion of the Company, all elements included in the metal equivalent calculations have a reasonable potential to be sold and recovered based on current market conditions, metallurgical test work, and the Company's operational experience.

This presentation also contains references to certain Exploration Results that were first reported in accordance with ASX Listing Rule 5.7 in the Company's announcements of 28/01/2020, 26/03/2020, 01/09/2020, 11/11/2020, 19/01/2021, 7/04/2021, 16/06/2021, 15/07/2021, 2/08/2021, 5/10/2021, 2/12/2021, 18/1/2022, 3/5/2022, 23/6/2022, 22/11/2022, 24/1/2023, 31/8/2023, 11/12/2023, 16/1/2024, 4/3/2024, 21/3/2024, 29/4/2024, 19/06/2024, 22/08/2024, 3/09/2024, 16/09/2024, 3/10/2024, 29/10/2024, 10/12/2024, 12/02/2025, 25/3/2025, 7/05/2025, 15/05/2025, 17/07/2025 and 24/07/2025.

The Company confirms that it is not aware of any new information or data that materially affects the information included in the original announcements and that, in the case of Mineral Resources, all material assumptions and technical parameters underpinning the mineral resource estimates in the original announcements continue to apply and have not materially changed. The Company confirms that the form and context in which the Competent Persons' findings are presented have not been materially modified from the original market announcements.

The Company has made reference to historic drilling and exploration results from a variety of exploration companies over the past 60 years that had previously explored its Projects. References to previous announcements should be read in conjunction with this presentation.

JORC CODE AND NI 43-101

Mineral Resource Estimates and Exploration Results are calculated in accordance with the 2012 Edition of the Australasian Code for Reporting of Exploration Results, Mineral Resources and Ore Reserves (**JORC Code 2012**) and Canadian National Instrument 43-101 – Standards of Disclosure for Mineral Projects (**NI 43-101**).

Investors outside of Australia and Canada should note that they may not comply with the relevant guidelines in other countries and, in particular, may not comply with Item 1300 of Regulation S-K, which governs disclosures in registration statements filed with the SEC. Information contained in this presentation describing mineral deposits may not be comparable to similar information made public by companies subject to the reporting and disclosure requirements of US securities laws.

DISCLOSURE OF TECHNICAL INFORMATION

All technical and scientific information in this presentation has been reviewed and approved by Group Chief Geologist, Mr Juan Gutierrez BSc, Geology (Masters), Geostatistics (Postgraduate Diploma), who is a Member and Chartered Professional of the Australasian Institute of Mining and Metallurgy and a Member of the Australian Institute of Geoscientists. Mr Gutierrez is a Competent Person as defined in the JORC Code 2012 and a Qualified Person as defined in NI 43-101. Mr Gutierrez consents to the inclusion in this presentation the matters based on his information in the form and context in which it appears.

NI 43-101 compliant technical reports for each of the Company's Ming Copper Gold Mine, Little Deer Copper Project and Pickle Crow Gold Project are available under the Company's SEDAR+ profile at www.sedarplus.ca.

FORWARD-LOOKING STATEMENTS

This presentation may contain certain forward-looking statements and forward-looking information concerning the Company, including but not limited to statements and information regarding the Company's plans, forecasts and projections with respect to its mineral properties and programs, estimated Mineral Resources, cost projections, plans, strategies and objectives (**Forward-looking Statements**). Forward-looking Statements may be identified by the use of words such as "may", "might", "could", "would", "will", "expect", "intend", "believe", "forecast", "milestone", "objective", "predict", "plan", "scheduled", "estimate", "anticipate", "continue", or other similar words and may include statements regarding plans, strategies and objectives.

Although the Forward-looking Statements contained in this presentation reflect management's current beliefs based upon information currently available to management and based upon what management believes to be reasonable assumptions, such Forward-looking Statements are estimates for discussion purposes only and should not be relied upon. They are not guarantees of future performance and involve known and unknown risks, uncertainties and other factors many of which are beyond the control of the Company. Such factors may include changes in commodity prices, foreign exchange fluctuations, changes in economic, social and political conditions, and changes to applicable regulation.

Forward-looking Statements are inherently uncertain and involve known and unknown risks and uncertainties. Forward-looking Statements, and anticipated future results, performance or achievements expressed or implied by such Forward-looking Statements, may therefore differ materially from results and performance ultimately achieved by the Company. The performance of the Company may be influenced by a number of factors which are outside the control of the Company and its related bodies corporate and their respective directors, officers, employees, advisers and agents. Forward-looking Statements are inherently subject to business, economic, competitive, political and social uncertainties and contingencies. Many factors could cause the Company's actual results to differ materially from those expressed or implied in any Forward-looking Statements provided by the Company, or on behalf of the Company.

Forward looking Statements in this presentation are based on the Company's beliefs, opinions and estimates as of the dates the forward-looking Statements are made, and no obligation is assumed to update Forward-looking Statements if these beliefs, opinions and estimates should change or to reflect other future developments. Although management believes that the assumptions made by the Company and the expectations represented by such information are reasonable, there can be no assurance that the Forward-looking Statements will prove to be accurate and undue reliance should not be placed on Forward-looking Statements.

The Company does not undertake to update any Forward-looking Statements based on new information, future events or circumstances or otherwise, except in accordance with applicable securities laws. No representation, warranty or undertaking, express or implied, is given or made by the Company that any events expressed or implied in any Forward-looking Statements in this presentation will actually occur.

Investment Highlights



Rapid low-cost growth through the drill bit = a proven strategy for value creation



GREEN BAY COPPER GOLD

- **High grade copper and gold** in Newfoundland Labrador, Canada
- Large scale, high grade and open **1.2Mt contained metal at 2% copper equivalent¹** (M&I of 24.4Mt for 460kt contained metal at 1.9% and Inf of 34.5Mt for 690kt contained metal at 2% copper equivalent¹)
- **A\$250M** of mine infrastructure
- **Significant and immediate growth drilling 130,000m in 2025**



PICKLE CROW GOLD

- **High grade gold** in Ontario, Canada
- **2.8Moz @ 7.2g/t gold** resource
- Inferred resource remains **open**
- Significant landholding with huge **exploration upside**
- A major gold **mining district**



PROVEN TRACK RECORD

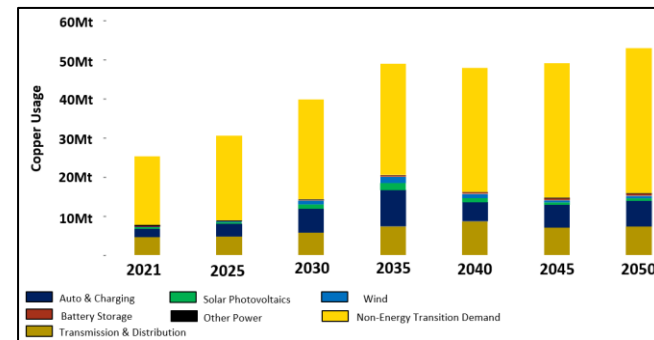
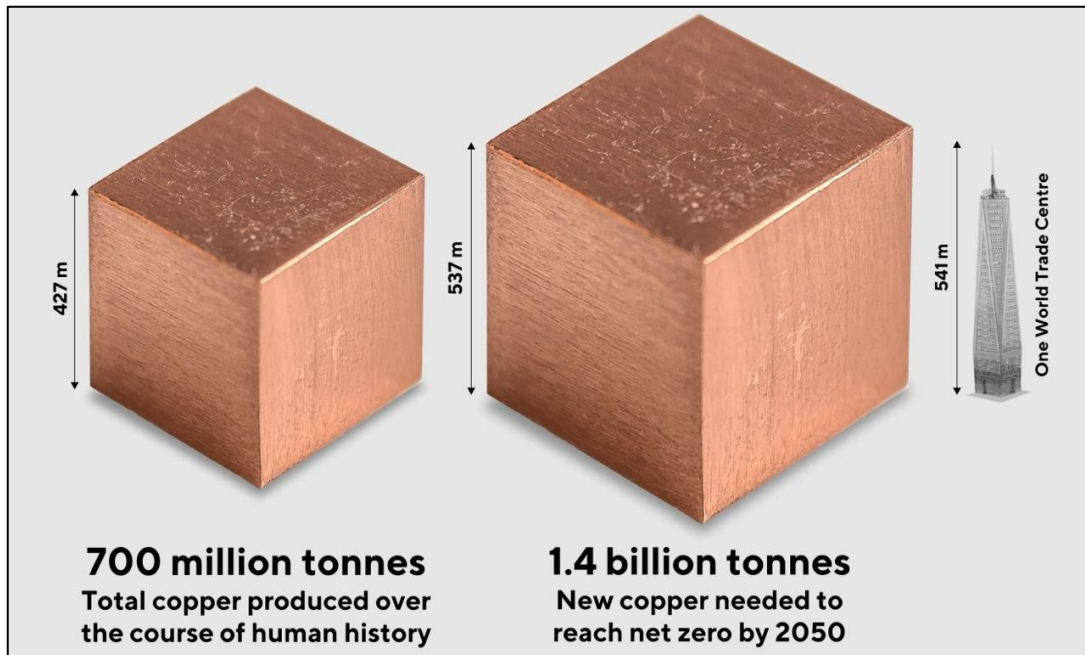
- Management team with a **proven track record of creating significant value for shareholders** and stakeholders
- Recent success with ASX200 Bellevue Gold from discovery to production in only 5 years
- **Well-funded** with **~A\$145M** cash, receivables and liquid investments²

1. Prepared in accordance with JORC Code 2012 & NI 43-101. Metal equivalents for the Resource Estimate has been calculated at a copper price of US\$8,750/t, gold price of US\$2,500/oz and silver price of US\$25/oz. Metallurgical recoveries have been set at 95% for copper and 85% for both gold and silver. $CuEq(\%) = Cu(\%) + (Au(g/t) \times 0.82190) + (Ag(g/t) \times 0.00822)$. In the opinion of the Company, all elements included in the metal equivalent calculation have a reasonable potential to be sold and recovered based on current market conditions, metallurgical test work, and the Company's operational experience.

2. Cash, receivables and liquid investment position at 30 June 2025, plus A\$10 million proceeds received from the Share Purchase Plan completed on 14 July 2025, and anticipated net proceeds from the second tranche of the Institutional Placement of ~A\$26.6 million (**T2 Placement**), which is subject to shareholder approval at a general meeting planned to be held on 28 August 2025, noting that there is no guarantee that shareholders will vote in favour of the issuance of shares under the T2 Placement.

Copper – The Macro Landscape

Nearly twice the amount of copper mined in human history is required in the next 27 years to achieve net zero by 2050^{1,2}



Global Copper Mining Issues

- Decreasing copper grades
- Reduced discovery rates
- Time and cost to production
- Mining is getting deeper
- Social License becoming more challenging






Outstanding transformation in less than two years



Rapid low-cost growth through the drill bit = a proven strategy for value creation

OCTOBER 2023

JULY 2025

	Market Cap	~A\$70M ¹	+A\$650M	~A\$720M ² +929% Increase
	Share Price	A\$0.37 ³	+A\$0.72	A\$1.09 ² +195% Increase
	Drilling	0 Drill Rigs 202,740m (historic)	+99,700m	8 Drill Rigs 302,440m +49% Increase
	Resource	39Mt @ 2% CuEq ^{4,5} M&I: 24.4Mt @ 1.9% CuEq Inferred: 34.6Mt @ 2.0% CuEq	+20Mt	59Mt @ 2% CuEq ⁶ M&I: 24.4Mt @ 1.9% CuEq Inferred: 34.6Mt @ 2.0% CuEq +51% Increase
	Land Holding	56km ²	+290km ²	346km ² +518% Increase ⁷ District Scale Mineral Province

1. As at 31 August 2023 2. As at 29 July 2025 3. Capital raise share price to acquire the Green Bay Project, after adjusting for a 15:1 consolidation in December 2023. Refer to ASX announcement dated 31 August 2023 4. Prepared in accordance with Canadian National Instrument 43-101. This is a foreign estimate and has not been reported in accordance with JORC 2012. A competent person has not done sufficient work to classify as a mineral resource in accordance with JORC 2012 and it is uncertain that following further evaluation and exploration work that the foreign estimate will be able to be reported as a mineral resource under the JORC Code 2012. See the Company's ASX Announcement dated 31 August 2023 for further information regarding this foreign estimate. 5. Metal equivalents calculated using a copper price of US\$8,295/t, gold price of US\$1,912/oz and a silver price of US\$22.59/oz. Individual grades for the metals are set out ASX announcement dated 31 August 2023. Copper equivalent was calculated based on the formula $CuEq(\%) = Cu(\%) + (0.7412 \times Au(g/t)) + (0.00876 \times Ag(g/t))$. No metallurgical recovery factors have been applied to the in-situ resource. It is the Company's view that all elements in the copper equivalent calculation have a reasonable potential to be recovered and sold. 6. Refer to ASX announcement dated 29 October 2024 and Appendix 1 for details of the Mineral Resource Estimate and metal equivalents. 7. Percent increase calculated using the formula $((\text{Final Value} - \text{Starting Value}) / \text{Starting Value}) \times 100$.

Exceptional Share Register & Strong Balance Sheet



Well-funded to deliver strong velocity of news flow through 2025/2026

CAPITAL STRUCTURE

	CURRENT
Shares on issue	682.7M ¹
Management performance rights	36.1M ²

SHAREHOLDER SUMMARY³

Australian & Global Institutions	66%
BlackRock Group	13%
Board & Management (fully diluted)	8%
Regal Funds Management	5%

GLOBAL BANKING & RESEARCH



A\$1.09

Current Share Price¹

~A\$720M

Market Capitalisation¹

2.4M

Average Daily Volume⁴

~A\$145M

Cash Position⁵

**ASX &
TSX
listings**

**No Offtake
No Streams
No Debt**

Board and Management

A Leadership team with proven success in the Resources Sector



Kevin Tomlinson

**Independent
Non-Executive Chair**

Non-Executive Independent Chair of **Bellevue Gold (ASX200)**, former Chair of **Cardinal Resources** and Non-Executive director of **Centamin PLC**.

Highly experienced mining executive with over 40 years' experience across geology, investment banking and M&A in multiple jurisdictions including Canada, Australia, Africa and the UK.

Previous Managing Director of Investment Banking at **Westwind Partners** and **Stifel Nicolaus**.



Steve Parsons

Managing Director

Founder and Previous Managing Director and current Non-Executive Director of **Bellevue Gold (ASX 200)** and previous founder and Managing Director **Gryphon Minerals (ASX 200)**.

Experienced geologist with a proven track record of mineral discoveries, corporate growth, international investor relations and creating shareholder wealth.



Michael Naylor

Executive Director

Non-Executive Director of **Bellevue Gold (ASX200)**.

27 years' experience in corporate advisory and public company management since commencing his career and qualifying as a chartered accountant.

Involved in the financial management of mineral and resources focused public companies serving on the board and in the executive management teams.



Renée Roberts

**Independent
Non-Executive Director**

Previously held C-Suite and director roles at large corporations including **National Australia Bank**, **QBE** and **Bank of New Zealand** as well as at the **Australian Prudential Regulatory Authority (APRA)**.

Finance professional with considerable experience in risk management, financial services, governance, regulation, business transformation and growth, efficiency, strategic leadership, strategy development and execution.

Currently the Chief Risk Officer at Judo Bank and Director of **Collingwood Football Club**.



Darren Cooke

Chief Executive Officer

Previously held senior positions with **Northern Star Resources**, **Newmont Mining** and **Barrick Gold**.

Geologist with over 28 years' experience. Extensive gold industry experience in Australia and North America spanning regional and near mine exploration, production geology, engineering planning, mine building and corporate development.

Previous positions include Kalgoorlie district geology manager for **Barrick Gold** and Principal Geologist – Business Development for **Northern Star Resources**.



David Southam

Advisor to the Board

Previously Managing Director of **Mincor Resources NL (ASX: MCR)** and Executive Director of **ASX200** nickel company **Western Areas (ASX: WSA)**. Held senior executive roles within Brambles Group, ANZ Investment Bank and WMC Resources.

David is a CPA with more than 30 years' experience in accounting, operations, capital markets and finance across the resources and industrial sectors. Currently Executive Chairman of **Cygnus Metals (ASX: CY5)** and Non-Executive Director of **Ramelius Resources (ASX: RMS)**.

Exceptional Management and In-Country Team



Management team with in-depth Canadian mining expertise



Jessie Liu-Ernsting

Chief Corporate Development Officer

Former VP investor relations at **G Mining Ventures Corp (TSX:GMIN)**. Director of the **Prospectors & Developers Association of Canada (PDAC)**.

Held senior technical, financial and strategic positions at **Hudbay Minerals Inc (NYSE:HBM)**, global investment fund **Resource Capital Funds** and engineering groups **Hatch** and **Golder Associates** as well as investment banking at **CIBC Capital Markets**.

Ms Liu-Ernsting is also experienced in areas of corporate board audit, compensation, technical and special committees.



Chen Sun

Chief Financial Officer

Ms Sun has over 15 years' experience in stewarding business growth and overseeing accounting, corporate finance and financial management functions in the resources industry. Chen was previously CFO for nickel producer **Mincor Resources NL**, for 7 years until the company was taken over by Wyloo Consolidated Investments Pty Ltd in 2023.

Ms Sun holds a Bachelor of Commerce from Curtin University and is a member of the CPA Australia and the Australian Institute of Company Directors.



Laura Noonan-Crowe

General Counsel and Company Secretary

A lawyer with 18 years' experience in the resources industry. Ms Noonan-Crowe was the General Counsel and Company Secretary, Australia for TSX-listed gold producer, **Karara Resources Inc.**, before its merger with Westgold.

Ms Noonan-Crowe previously held senior legal roles at global gold mining majors, **Northern Star Resources Limited**, where she also served as Company Secretary to certain Committees of the Board of Directors, and **Gold Fields Limited**. Ms Noonan-Crowe commenced her career at **Minter Ellison Lawyers**.



Gus Simbanegavi

Vice President Operations

Experienced Mining Engineer with > 25 years of mine operations management & project development.

Previously COO & Director of AIM listed **Bluerock Diamonds** where he was instrumental in the feasibility, development & construction of a 1.0Mtpa diamond mine & processing plant.

Experienced across a range of commodities including Gold, Platinum, Copper, Nickel, Zinc & Diamonds from his time in senior executive roles at companies such as **Aquarius Platinum Mines**, **Vedanta Zinc International** & **Zimplats Platinum Mines**.



Jared Dietrich

Vice President Metallurgy

Metallurgy expert with over 17 years' experience in mining projects globally, across various engineering, construction, operational, & technical leadership roles.

Almost 15 years with **Ausenco Engineering**, in their Australian, Canadian & USA offices, across several engineering, study management & commissioning roles, most recently as VP of Technical Services, responsible for Cu-Au metallurgical technical governance & innovation across all process engineering in North America, and NI 43-101 delivery.



Juan Gutierrez

Group Chief Geologist

Over 17 years' experience in a diverse range of mining projects globally.

Over 6 years with **Northern Star Resources** as Geology Superintendent where he was involved in discoveries at Jundee and Yandal totalling over 1Moz Gold.

Extensive experience from exploration and resource development to production and resource estimation in commodities including gold, nickel and copper.



Tabatha LeBlanc

Vice President Environment & Community

25 years' ESG experience in North America, with a proven track record of achieving social and government approvals for companies including **TransCanada & Alliance Pipelines**, **Marathon PGM Corporation**, **Sibanye-Stillwater** & **Generation Mining**.

Oversaw the management & delivery of critical environmental approvals & community agreements including successfully obtaining approval for an Environmental Assessment conducted by a Joint Federal-Provincial Review Panel in Ontario.



Bonnie Matthews

Vice President Human Resources

Over 20 years' experience in Business Management and HR from previous positions with **Tata Steel Minerals Canada** and **Grey Rock Mining** as well as positions with the **Governments of NL** and of **Nunavut**.

Currently sits on the board of **Canadian Manufacturers and Exporters (CME)** in NL, is the current Chairperson of the **NL CME HR Committee**, and is also on the board of **Women in Resource Development for Newfoundland and Labrador**.

An Exceptional High-Grade Asset

Two separate mineralised copper and gold zones at the mine

High Grade Upper Copper & Gold VMS Zones

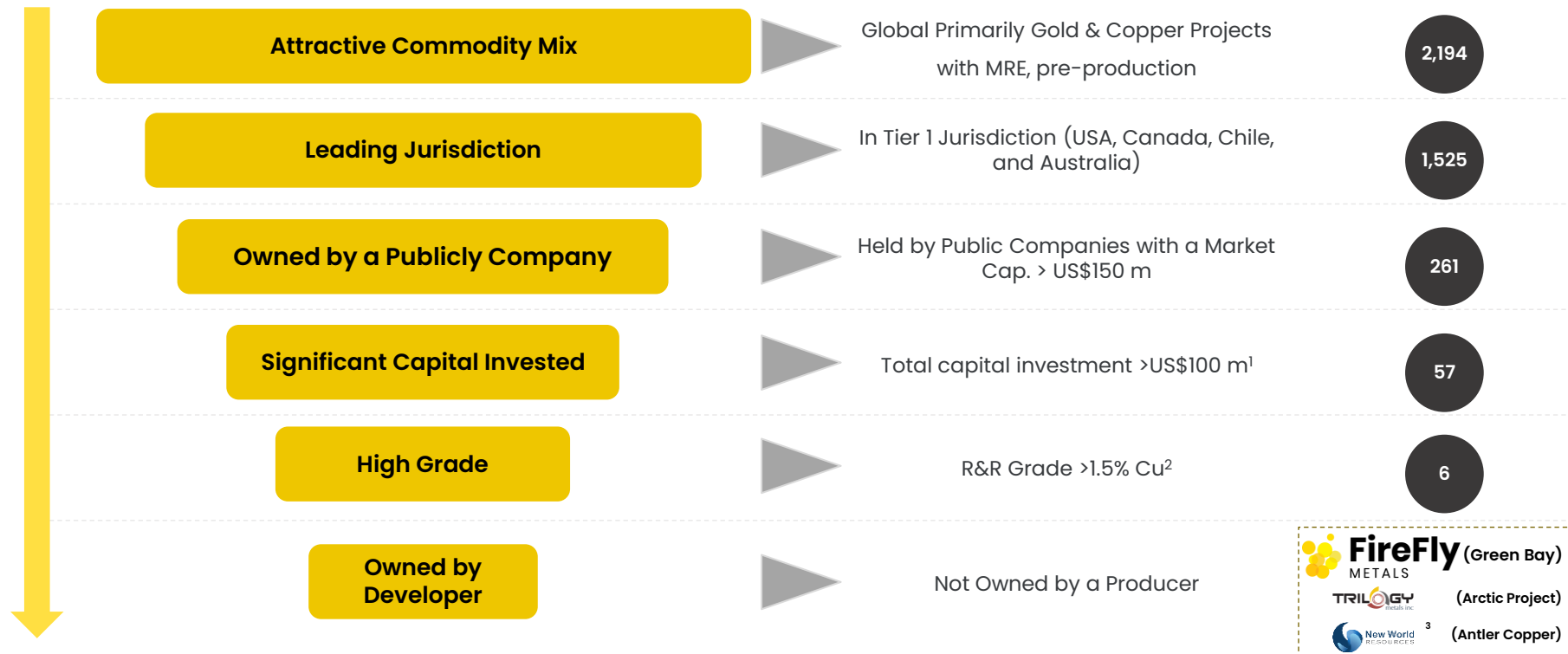
- **10.7m @ 12.2% CuEq** (9.0% Cu & 3.6g/t Au) MUG24_095
- **5.4m @ 12.2% CuEq** (8.6% Cu & 4.0g/t Au) MUG24_023
- **3.2m @ 11.8% CuEq** (2.9% Cu & 10.4g/t Au) MUG23_037
- **11.6m @ 9.3% CuEq** (6.0% Cu & 3.9g/t Au) MUG24_128
- **26.0m @ 8.2% CuEq** (6.1% Cu & 2.4g/t Au) MUG23_030
- **13.5m @ 7.6% CuEq** (5.3% Cu & 2.6g/t Au) MUG23_029
- **14.7m @ 7.5% CuEq** (2.6% Cu & 5.5g/t Au) MUG23_004
- **7.0m @ 7.4% CuEq** (4.4% Cu & 1.5g/t Au) MUG24_038
- **5.5m @ 7.1% CuEq** (5.4% Cu & 2.0g/t Au) MUG25_014
- **14.6m @ 6.7% CuEq** (5.4% Cu & 1.5g/t Au) MUG25_032
- **17.8m @ 6.6% CuEq** (4.4% Cu & 2.2g/t Au) MUG23_003
- **46.4m @ 5.6% CuEq** (4.6% Cu & 1.2g/t Au) MUG23_006

Broad Footwall Copper Stringer Zone

- **26.2m @ 5.3% CuEq** (4.9% Cu & 0.4g/t Au) MUG25_015
- **86.3m @ 3.7% CuEq** (3.1% Cu & 0.6g/t Au) MUG24_079
- **24.1m @ 3.7% CuEq** (3.5% Cu & 0.3g/t Au) MUG25_042
- **31.7m @ 3.5% CuEq** (3.4% Cu & 0.1g/t Au) MUG24_063
- **58.2m @ 3.1% CuEq** (2.4% Cu & 0.7g/t Au) MUG24_083
- **76.3m @ 2.9% CuEq** (2.4% Cu & 0.5g/t Au) MUG24_073
- **56.8m @ 2.7% CuEq** (2.5% Cu & 0.1g/t Au) MUG24_058
- **47.1m @ 2.4% CuEq** (2.3% Cu & 0.2g/t Au) MUG23_014
- **63.1m @ 2.2% CuEq** (2.0% Cu & 0.1g/t Au) MUG24_004
- **51.0m @ 2.2% CuEq** (2.1% Cu & 0.1g/t Au) MUG24_009

**BOTH THE HIGH-GRADE VMS & BROAD FOOTWALL ZONE
REMAIN OPEN AT DEPTH**

Scarcity of Quality Cu – Au Exploration Companies



Note: Market data as at 24 July 2025.

¹ Total capital investment is calculated as the sum of all disclosed capital cost figures. Capital costs are sourced by S&P Global Intelligence from company disclosure where available.

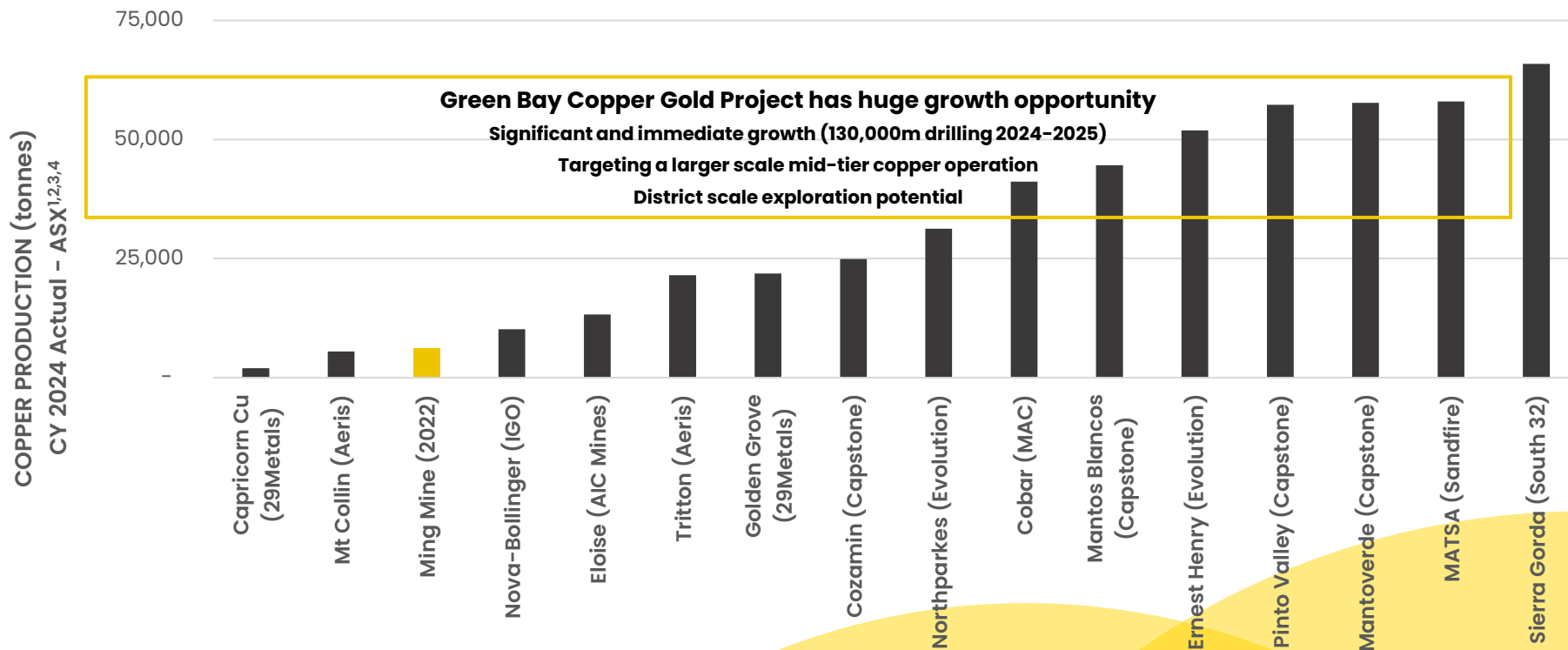
² Cu grades of assets based on S&P data where available.

³ New World Resources announced on July 23, 2025, that all directors of New World Resources have accepted the Kinterra's unconditional off-market takeover bid at A\$0.067/share. Kinterra is a private equity firm focused on investments in the critical metals and infrastructure space.

Source: Company Disclosure, and S&P Global Intelligence.

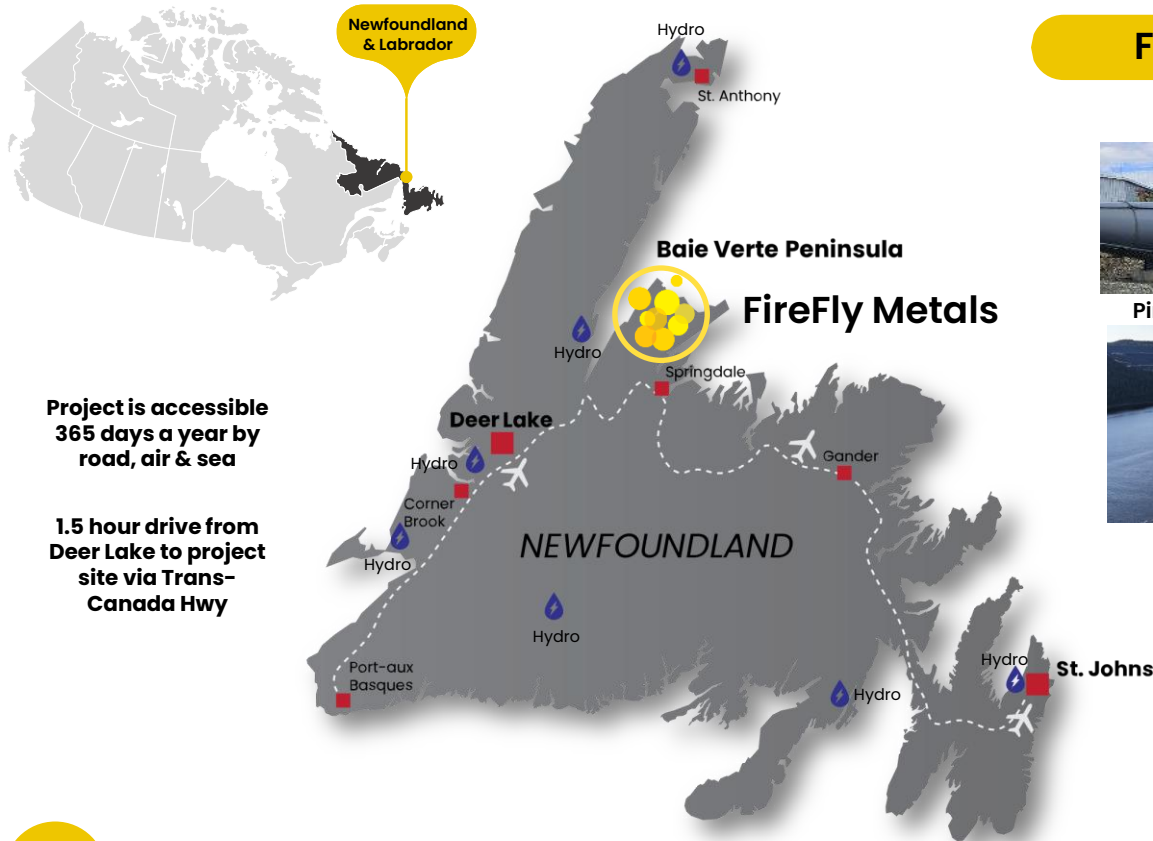
A Lack of Copper Opportunities on the ASX

Few ASX companies with >30,000 tonnes of attributable Cu production 2024-2025



1. See Appendix 3 for original source data for production information, from S&P.
2. This graph depicts actual copper production information and is not a representation of mineral resources or ore reserve estimates. All noted assets were therefore in production at the time.
3. The Ming Mine production data is from 2022. The Ming Mine is currently under care and maintenance.
4. Excludes assets with attributable production over 100kt of copper.

Newfoundland – A Maritime and Mining Province



Project is accessible
365 days a year by
road, air & sea

1.5 hour drive from
Deer Lake to project
site via Trans-
Canada Hwy

ASX | TSX
FFM

1. Data Source: Statista Distribution of gross domestic product of Newfoundland and Labrador, Canada in 2021 by industry

FireFly Metals Green Bay Operations

Ming Copper Mine



Pine Cove Deepwater Port



Fully Operational Mine



Tier 1 Mining Jurisdiction

- Strong government support
- Mining sector contributes +32% to GDP¹
- Skilled mining workforce readily available
- Track record of expedited mine permitting
- Rated Top 6 globally in 2024 by Fraser Institute
- Hydro Power abundant throughout Newfoundland

Why Green Bay is well positioned for the future

The ingredients are already in place for a substantial Copper Mine



Mineral Deposit

A WORLD-CLASS VMS SYSTEM UNDERPINS THE MINE

Large scale (24.4Mt M&I + 34.6Mt Inf) and High-Grade (2% CuEq) Copper-Gold Deposit, rapidly growing through drilling & exploration with camp-scale potential for discovery



Surface Infrastructure

EXISTING INFRASTRUCTURE SUPPORTS A LARGE OPERATION

Workshops, water treatment plant, offices etc., low-cost green Hydro Power runs through the property, 365-day access to site via sealed highways, well serviced local communities



Underground Access

AN ESTABLISHED UNDERGROUND MINE

Fully dewatered underground mine with access to 950m decline and shaft, +20km of historical development in place provides a low-cost foundation for drilling and future mining



Processing & Concentrate

PROVEN SIMPLE METALLURGY & HIGH-QUALITY CONCENTRATE

Long history of concentrate production. Excellent recoveries of >98% Copper, conventional processing flow (crush, grind, float). No deleterious elements. Historic concentrate grades consistently between 27% and 29% copper. Access to a deep-water port 6km from the mine.



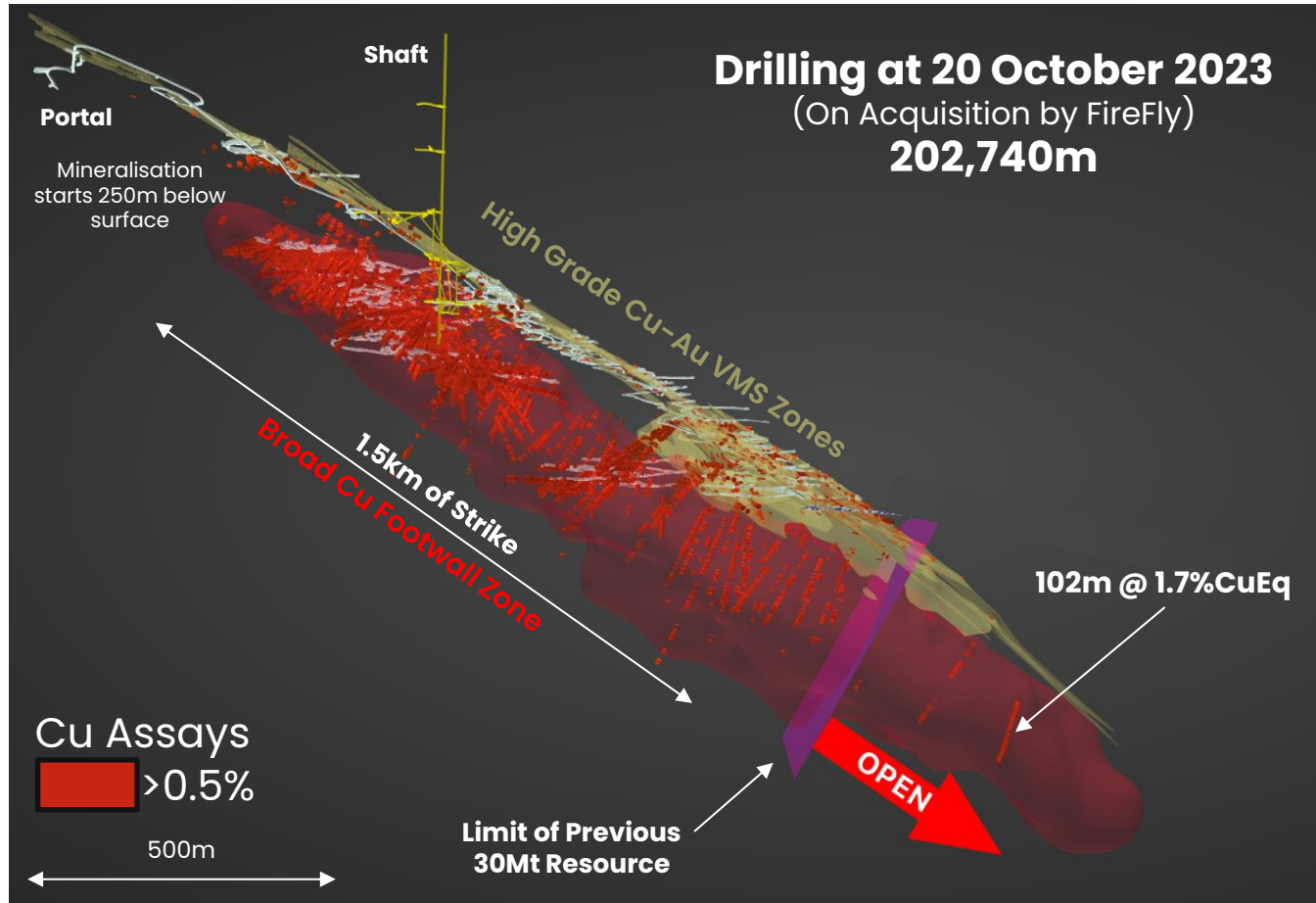
Approvals & Permitting

ENVIRONMENTALLY APPROVED WITH A CLEAR GROWTH STRATEGY

Initial upscaled restart of production, with construction of TSF on site and new plant with throughput capacity of up to 1.8Mtpa,¹ has been conditionally released from further environmental and socio-economic assessment.

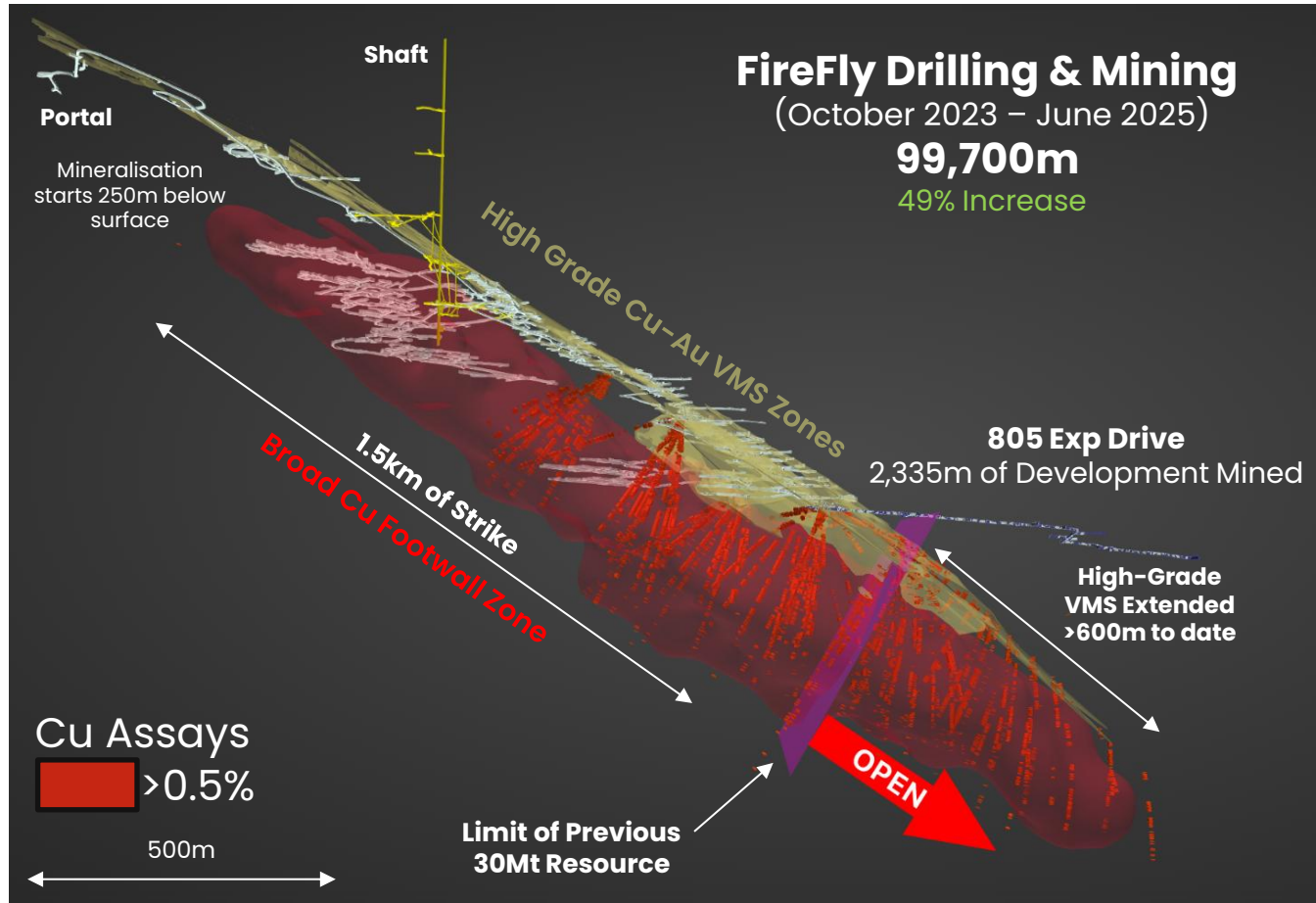
¹ Green Bay has been conditionally released from further environmental assessment for an initial upscaled restart mining operation involving a plant with a throughput capacity of up to 1.8Mtpa. Investors are cautioned that the plant capacity is a technical specification forming part of the environmental submission and not a forecast of the estimated production of the mining operation. The mining operation's forecast production will not be estimated until such time as the Company has prepared and announced its Scoping Study/Preliminary Economic Assessment. Should a larger scale case be adopted than contemplated by the environmental release, further assessment will be required by government agencies.

Drilling to Unlock Value – Data on Acquisition



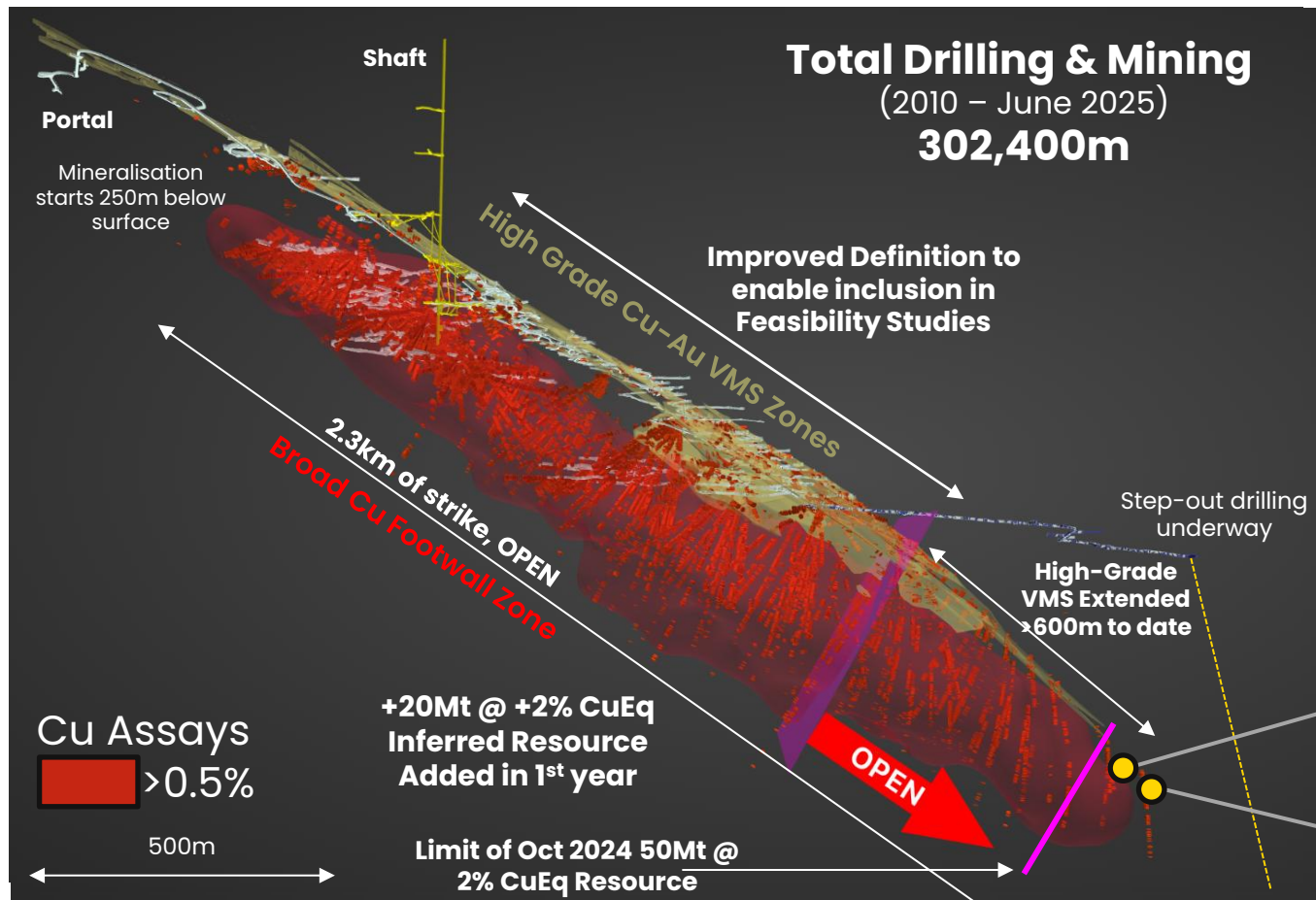
- No drill rigs
- Poor drill spacing in upper part of the mine
- Historical mining focused on high-grade VMS
- Only 2 intersections beyond the mineral resource:
 - 460m down-plunge of mine workings
 - Bulk intersection of 102m @ 1.7% CuEq (Footwall Style)

Drilling to Unlock Value by FireFly Metals



- **Exploration drive mined to position drill rigs to extend mineralisation**
- **Both high-grade VMS and broad Footwall Zone mineralisation continues beyond historical drilling:**
 - 10.7m @ 12.2% CuEq (VMS)
 - 17.3m @ 7.4% CuEq (VMS)
 - 25.8m @ 5.1% CuEq (VMS)
 - 86.3m @ 3.7% CuEq (FWZ)
 - 58.2m @ 3.1% CuEq (FWZ)
 - 76.3m @ 2.9% CuEq (FWZ)
- **Infill drilling in the mid-section of the mine shows strong continuity:**
 - 50.9m @ 2.6% CuEq
 - 47.1m @ 2.4% CuEq
 - 63.1m @ 2.2% CuEq
 - 66.8m @ 2.1% CuEq

Drilling to Unlock Value by FireFly Metals



- **6 Rigs Underground (resource growth & infill)**
- **Step-out extensional drilling is underway**
- **Infill drilling vital to extract maximum value:**
 - use higher-quality M&I Resource in mining studies
 - targeting high-grade mineralisation

INTERSECTIONS OUTSIDE OF 60Mt RESOURCE

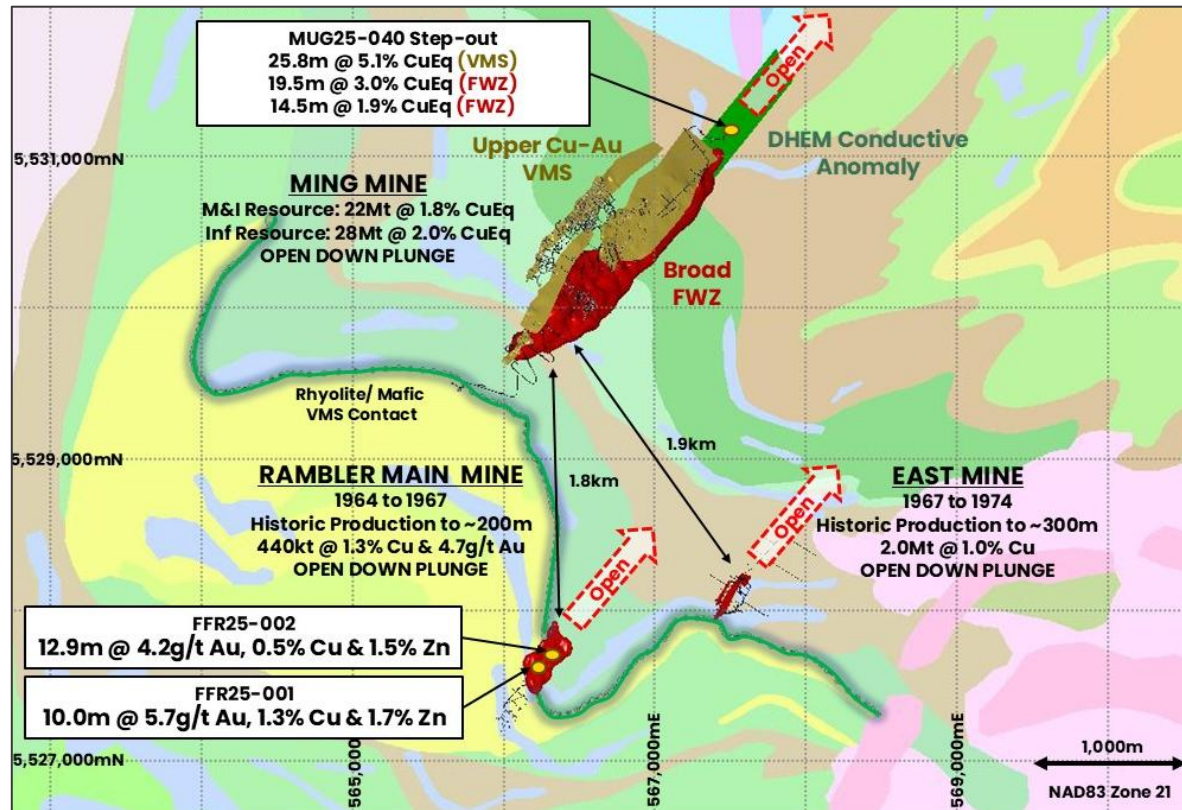
25.8m @ 5.1% CuEq

12.4m @ 6.8% CuEq

Multiple Targets Adjacent to Copper & Gold Ming Mine

Potential for another Ming.....?

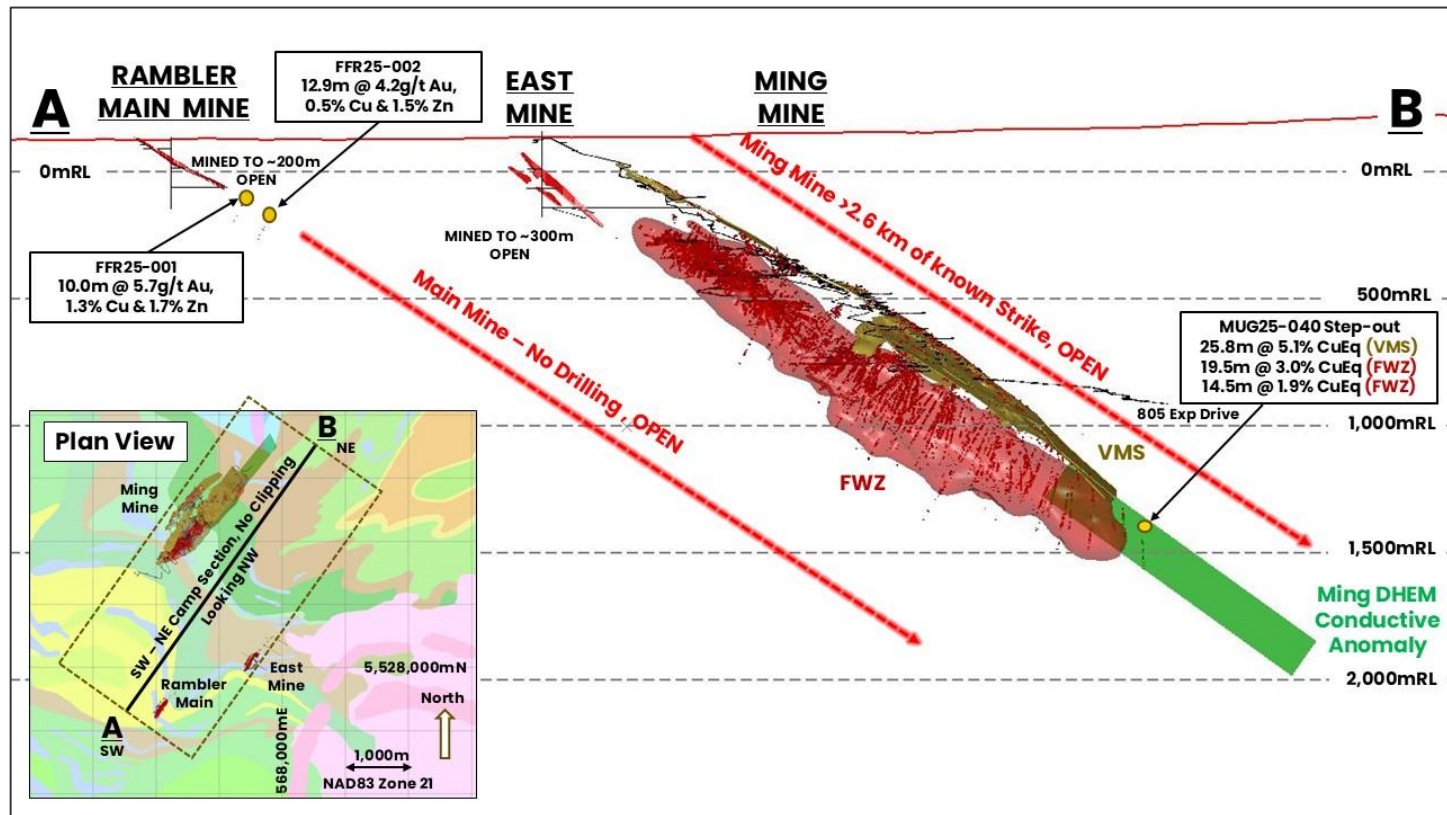
- Multiple high priority regional targets to be drill tested over coming weeks through 2025
- Rambler Main Mine drill results show similar style mineralisation to adjacent Ming Mine
- All targets are shallow (~200m depth) and OPEN
- Significant Gold as well as Copper and Zinc
- Further drilling underway
- Rambler and East Mines are only 2km from the Ming Mine; Easy trucking to future mine infrastructure



Initial Regional Drilling Intercepts High Grade Cu & Au

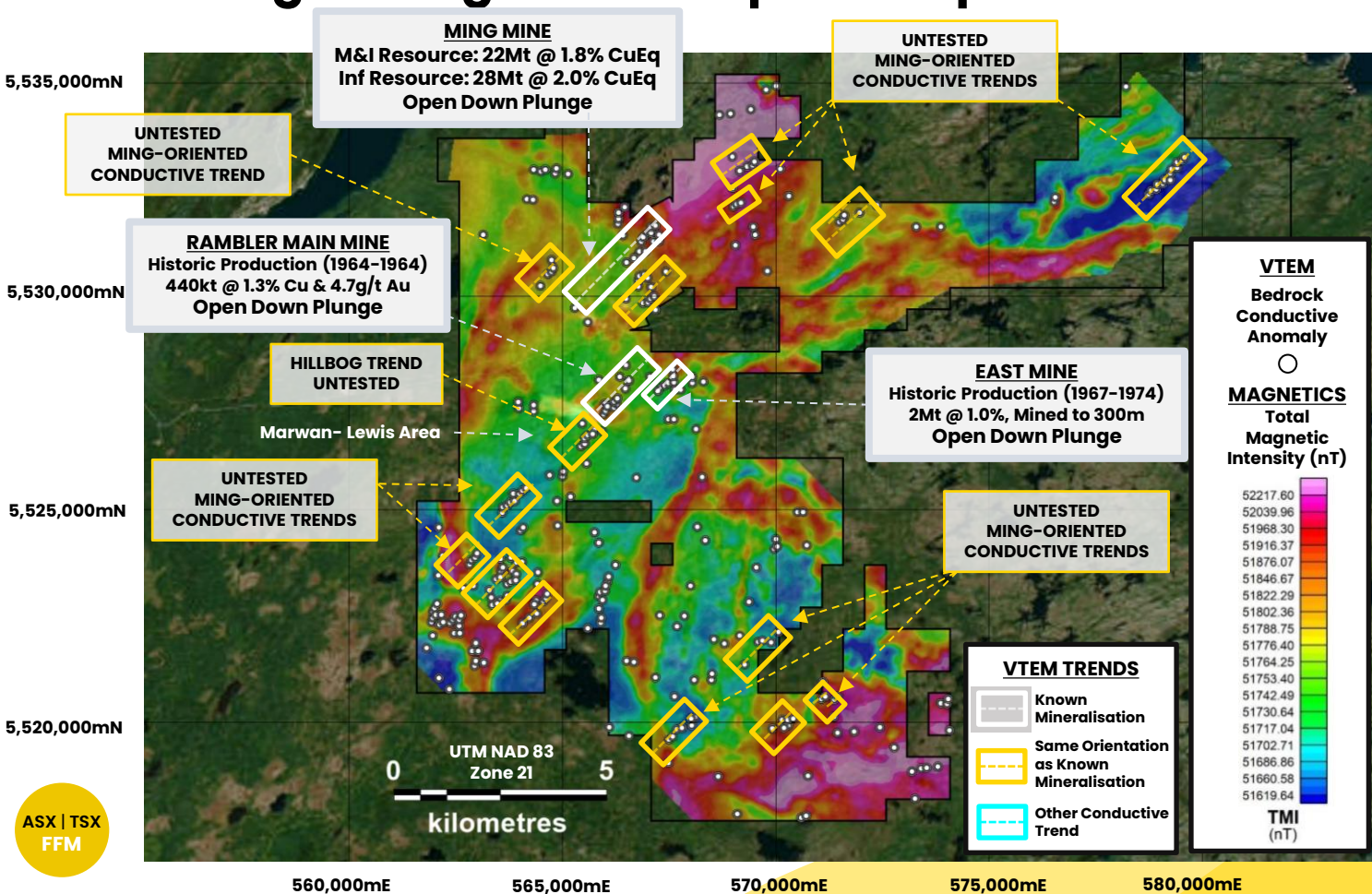
'Look-alike' to the adjacent Ming Mine

- Maiden diamond drilling at Rambler Main – the first regional target
- 10.0m @ 6.4% CuEq (5.7g/t Au, 1.3% Cu, 1.7% Zn & 20.9g/t Ag) ~ true thickness
- 12.9m @ 4.3% CuEq (4.2g/t Au, 0.5% Cu, 1.5% Zn & 10.9g/t Ag) ~ true thickness
- Shallow and OPEN
- Step-out growth drilling underway
- HOW BIG COULD THIS BE?



Unlocking the regional camp-scale potential

- Recent FireFly geophysics identified 325 untested targets
- 2 x surface rigs turning, testing regional targets
- Multiple Ming Mine look-alike targets
- Exploration claims host 8 historically mined deposits - all remain OPEN
- C\$16M of flow-through funds to accelerate discovery during 2025-2026



Economic studies targeting large-scale & long-life mine

Environmental approval secured for initial upscaled restart mining operation with construction of TSF on site and new plant with throughput capacity of 1.8Mtpa

Significant Progress to Date – Economic Studies scheduled for Q1 2026



Environment & Community

- ✓ Released from Environmental Assessment in just 45 days
- ✓ Application for early works permits in progress
- ✓ Tailings site selected & designed
- ✓ Ongoing sampling & monitoring
- ✓ Strong community support



Mining

- ✓ Mining method selected – bulk transverse long hole open stoping
- ✓ Preliminary design and schedule shows potential for further upscaling
- ✓ Geotechnical work in progress, including rock mass modelling and UCS testing
- ✓ Paste fill studies underway



Mineral Processing

- ✓ Preliminary met testwork completed, +98% Cu and +85% Au recovery
- ✓ Site surface layout completed
- ✓ Process flow and mill design in progress
- ✓ Hydro studies underway – indicate ample power supply for upscaled plant
- ✓ Port design and optimisation underway

Study Partners & Key Contractors

Mining

entech.

Processing

Ausenco

Environment, Permitting & Closure



Stantec



GEMTEC
CONSULTING ENGINEERS
AND SCIENTISTS

Ecometrix

Tailings



Knight Piésold
CONSULTING

Geology



CUBE
CONSULTING

wsp



P&E MINING
CONSULTANTS INC.
Geologists and Mining

Paste Fill

Met Testwork

SGS

Power & Energy

hydro
newfoundland labrador

FORAGE



ORBIT



GARANT



SWICK

Innovative • Productive • Safe



Springdale Forest
Resources Inc.
A Forestry, Drilling and Construction Co.

Assays

EASTERN
Analytical

Port

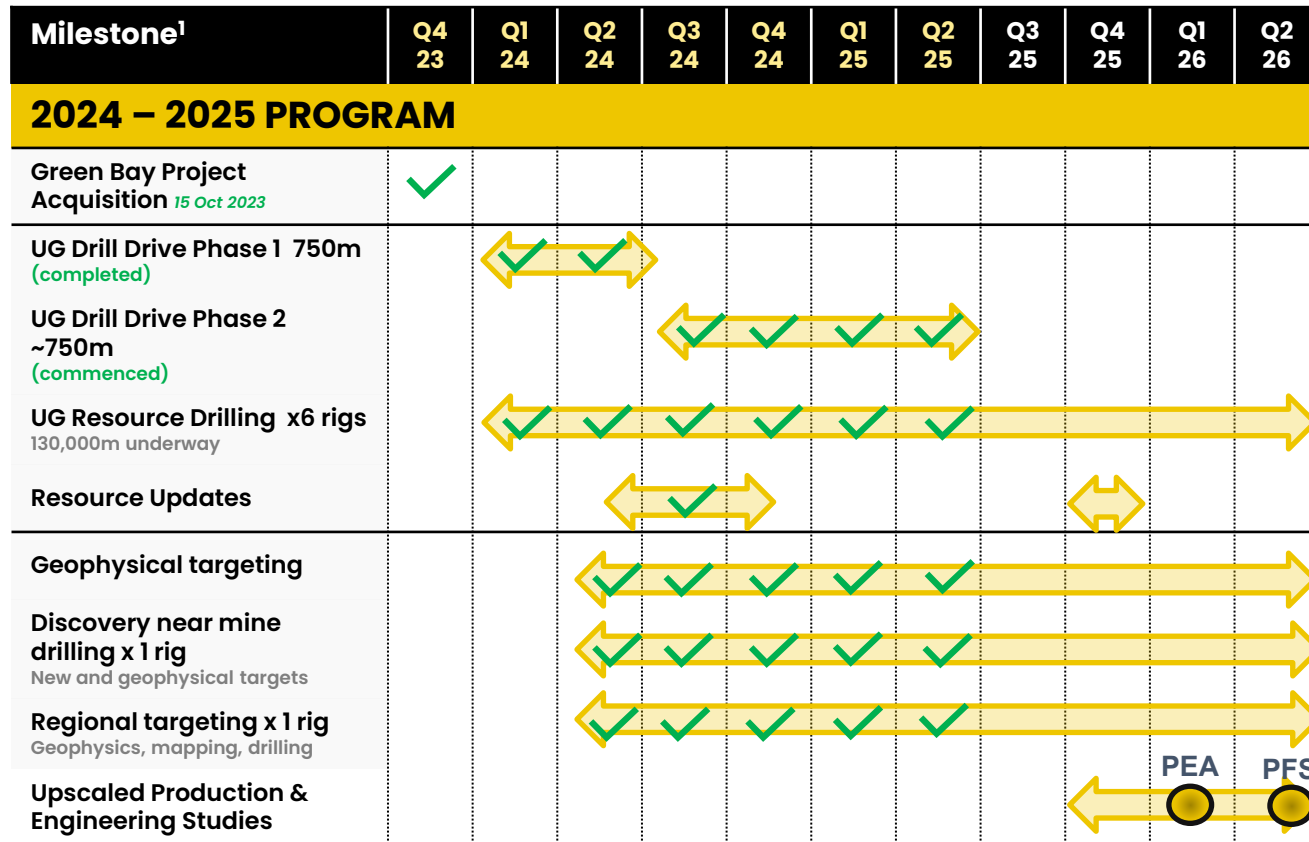
Shoreline
Aggregates Inc.

Paterson & Cooke

1. the Company continues to explore opportunities that may support future increases in production capacity. These scenarios will be considered within broader economic evaluations as part of future alternative development pathways. Should any of these cases be pursued, they would be subject to further review and approval by the appropriate regulatory authorities

Rapid Resource and Mine Growth Over Next 12 Months

Well-funded for significant velocity of news flow through 2025



2025 Key Deliverables

- Underground development drill drive completed
- 6 x underground drill rigs targeting resource growth and upgrades (100,000m completed of 130,000m)
- 2 x surface rigs targeting regional discovery; extensive geophysical surveys to continue
- Upscaled mine production & engineering studies scheduled for Q1 2026
- Environmental approval for start-up operation received

Game-Changing Catalyst-Rich High-Grade Opportunity

Board & Management Team with a Proven Track Record of Creating Shareholder Wealth

Strong Cash Position of A\$145 Million¹ for Growth Throughout 2025

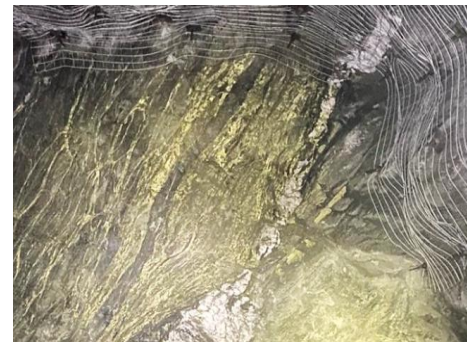
GREEN BAY COPPER & GOLD PROJECT

- **A fully operational underground mine in tier one mining jurisdiction**
- **Large high-grade resource that is growing**
- **Drilling for growth & further discovery (130,000m of drilling 2024-25)**
- **Significant mine upscaling underway for a mid-tier copper operation**
- **A\$250M of Infrastructure a huge head start** (UG mines, shaft, declines, processing plant, deep water port, camp and hydro power)



PICKLE CROW GOLD PROJECT

- **High-grade shallow 2.8Moz @ 7.2g/t gold inferred resource – OPEN**
- **Significant regional scale land holding with huge growth opportunity**



Supplementary Information



- Appendix 1. **Green Bay Mineral Resources**
- Appendix 2. **Green Bay Project – Further Information**
 - Significant Value Drivers Throughout 2025 “5 in 2025”
 - Existing Infrastructure = Lower Capex and Rapid Start-up
 - Deposit Geological Model
 - Mineralisation Styles
- Appendix 3. **2024 Copper Production Data References** (Slide ‘A Lack of copper opportunities on the ASX’)

Appendix 1 – Green Bay Mineral Resources¹

Ming Deposit Mineral Resource Estimate

	TONNES (Mt)	COPPER		GOLD		SILVER		CuEq Grade
		Grade (%)	Metal (‘000 t)	Grade (g/t)	Metal (‘000 oz)	Grade (g/t)	Metal (‘000 oz)	(%)
Measured	4.7	1.7	80	0.3	40	2.3	340	1.9
Indicated	16.8	1.6	270	0.3	150	2.4	1,300	1.8
TOTAL M&I	21.5	1.6	340	0.3	190	2.4	1,600	1.8
Inferred	28.4	1.7	480	0.4	340	3.3	3,000	2.0

Little Deer Deposit Mineral Resource Estimate

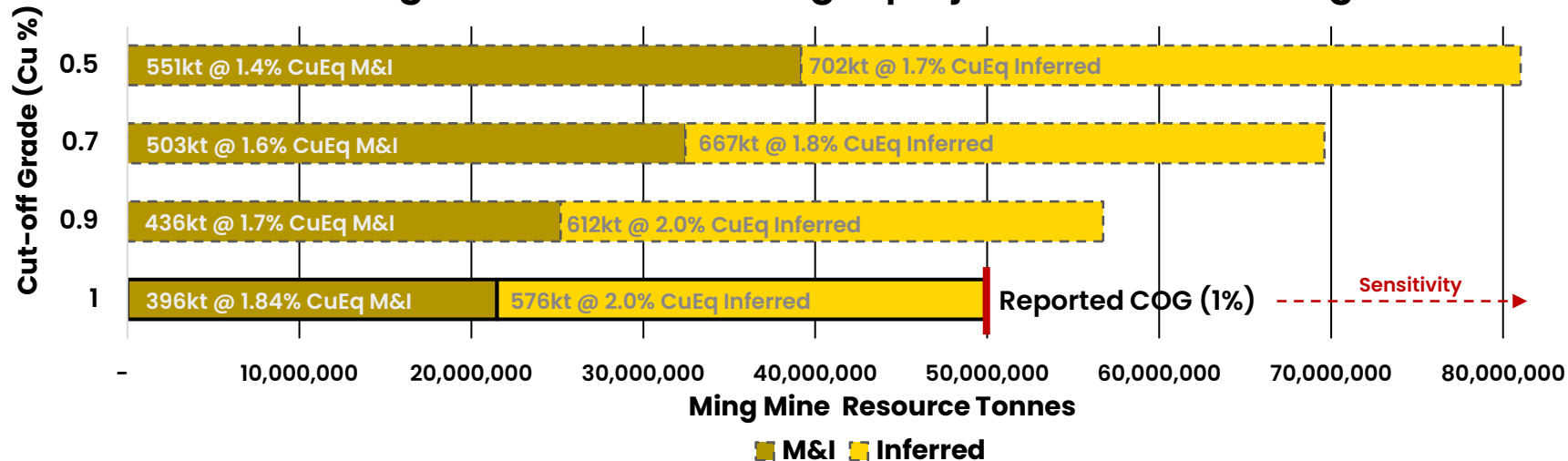
	TONNES (Mt)	COPPER		GOLD		SILVER		CuEq Grade
		Grade (%)	Metal (‘000 t)	Grade (g/t)	Metal (‘000 oz)	Grade (g/t)	Metal (‘000 oz)	(%)
Measured	–	–	–	–	–	–	–	–
Indicated	2.9	2.1	62	0.1	9	3.4	320	2.3
TOTAL M&I	2.9	2.1	62	0.1	9	3.4	320	2.3
Inferred	6.2	1.8	110	0.1	10	2.2	430	1.8

GREEN BAY TOTAL MINERAL RESOURCE ESTIMATE

	TONNES (Mt)	COPPER		GOLD		SILVER		CuEq Grade
		Grade (%)	Metal (‘000 t)	Grade (g/t)	Metal (‘000 oz)	Grade (g/t)	Metal (‘000 oz)	(%)
Measured	4.7	1.7	80	0.3	45	2.3	340	1.9
Indicated	19.7	1.7	330	0.2	154	2.6	1,600	1.9
TOTAL M&I	24.4	1.7	400	0.3	199	2.5	2,000	1.9
Inferred	34.5	1.7	600	0.3	348	3.1	3,400	2.0

Ming Mine Mineral Resource Sensitivity

The Ming Mine¹ is an even larger project at lower cutoff grades



Appendix 2 – Green Bay Project Further Information



Twin boom jumbo at the Ming Mine

Significant Value Drivers Throughout 2025

"5 in 2025"

1 Resource Growth

Continue **increasing the copper-gold Mineral Resource** by extending the known mineralisation in both the **upper high-grade VMS** as well as the **broad footwall copper rich zone**

2 Upgrades

Converting Inferred Resources to **Measured & Indicated**; M&I tonnes are worth **more** than Inferred, representing a huge opportunity to create value

3 New Discoveries

Drilling will test **compelling new targets**, including **potential in-mine repetitions, mine extensions, adjacent historic mines and greenfields opportunities**; These all have scope to create substantial, **rapid value**

4 Global Scale

Upcoming **mining studies** are expected to make it increasingly clear that **Green Bay is a large, long-life project** with a **substantial production profile** and **robust economics**

5 Tier 1 Jurisdiction

Highly favourable location, which delivers **security of tenure, extensive infrastructure, access to hydro power, critical minerals funding initiatives** and **deep pools of investment capital**

Existing Infrastructure = Lower Capex and Rapid Start-up

Surface Portal

Decline & UG Development

Resource starts just 250m below surface

Footwall Zone accessed but barely mined

6m x 3m shaft to 630m below surface in place

Existing decline beneath the shaft is already 5m x 5m

5m x 5m

Broad Footwall Zone

Excellent Geotechnical Conditions

Upper FW Stope (unfired)
(~750m below surface)

Open for >1 year, excellent ground, no water issues

Excellent Geotechnical Conditions

Exploration Drive
(~975m below surface)

Excellent ground, no stress indicators, good profile, dry

Phase 1 Drill Drive

Phase 2 Drill Drive (Extension)

2025 Drilling

2,100m Resource
24.4Mt @ 1.9% CuEq M&I
34.5Mt @ 2% CuEq Inferred
Starts from 250m below surface

Haulage & Mining Options

- Haulage & Mining Method studies in progress (Entech)
- FWZ can support bulk mining
- Majority of decline 5m x 5m (Australian mining size)
- Mining would start ~250m from surface (shallow)

Ground Conditions

- Excellent – can mine far deeper in Canada than WA

Cost Advantages

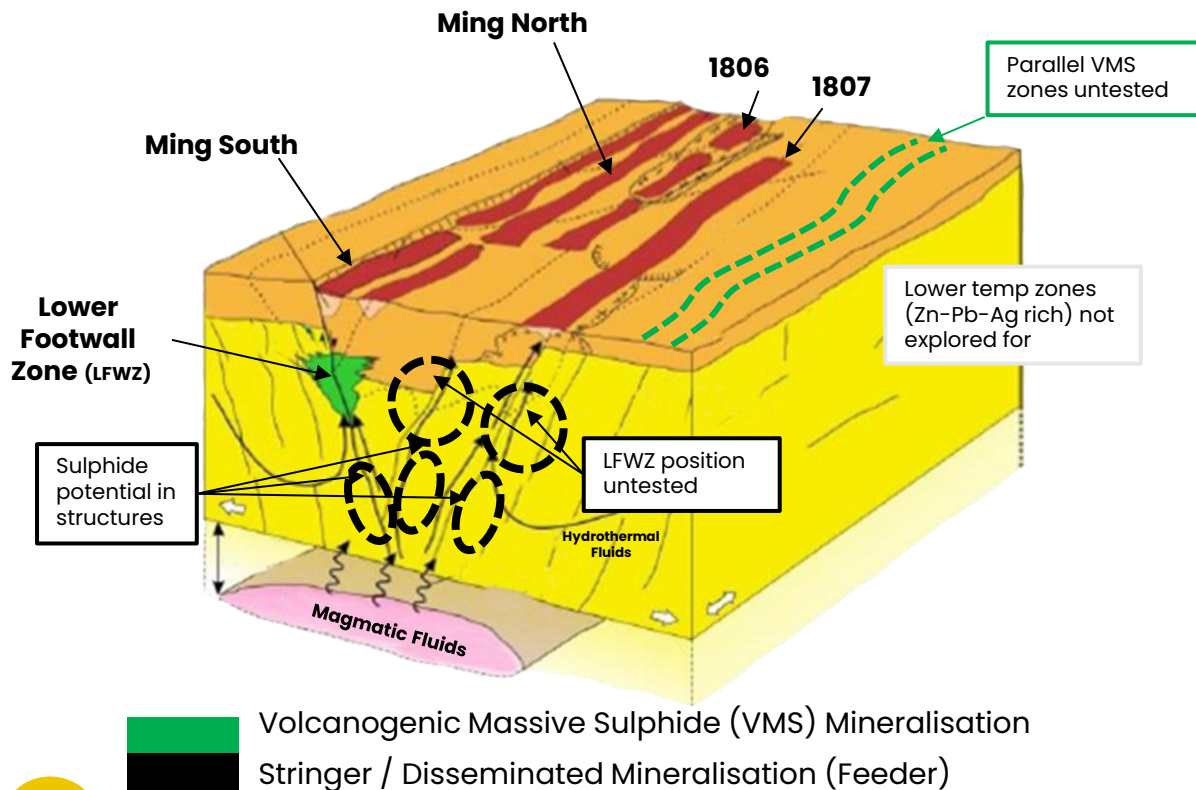
- In house 5.5m x 5.5m development costing A\$6,000/m (WA +A\$ 10,000m)
- Hydro power available for less than 6c per kwh (WA >20c/kwh)

Regional stress conditions are far lower than Western Australia meaning you can mine deeper

Long section looking west

Green Bay Project Exploration Targeting

MING DEPOSIT MODEL HIGHLIGHTS EXCEPTIONAL EXPLORATION UPSIDE¹



EXPLORATION OPPORTUNITY

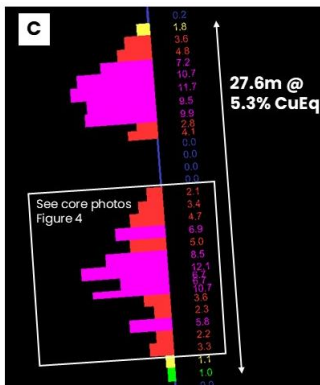
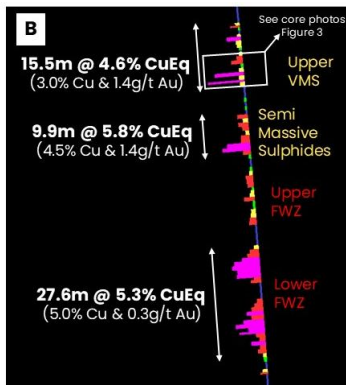
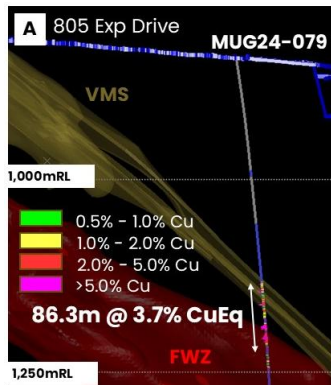
- Limited exploration has been conducted in the past 40 years – a key opportunity
- Downhole geophysics is a powerful exploration tool for this type of mineralisation... and rarely been used by previous company
- Because the mine was hand-to-mouth, there has been limited exploration outside of the known mineralised zones

KEY TARGETS

- Conduct downhole and surface electrical geophysical programs
- Drill test for parallel VMS mineralisation horizons
- Test for LFWZ-style stringer mineralisation beneath known VMS zones
- Explore for Zinc-Silver rich lateral zones within the system

Mineralisation Styles

86.3m @ 3.7% CuEq and 58.2m @ 3.1% CuEq (True Widths)

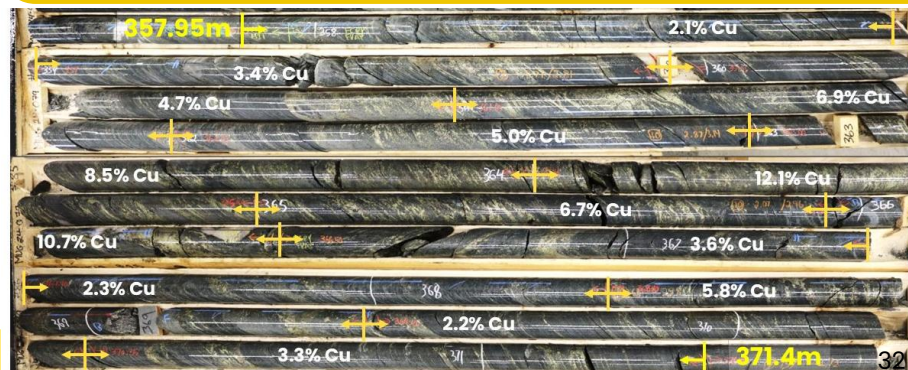


- MUG24- 079 is the best hole drilled by FireFly to date with thick consistent zones of high-grade copper and gold
- Grade seems to be increasing down plunge
- This hole has the highest-grade footwall zone encountered to date (5.3% CuEq over 27.6m)
- High-grade upper VMS has a well-developed footwall stringer zone directly underneath at the northern end of the Resource
- Other recent results demonstrate high grade is continuing 58.2m @ 3.1% CuEq (2.4% Cu & 0.7g/t Au) in hole MUG24-083 (~ true thickness)

Upper Copper-Gold VMS High Grade



Broad Copper Footwall Zone



Appendix 3 – 2024 Copper Production Data

Property	Current Owner	2024 Cu Metal Production (Kt)	Source Data
Capricorn Copper	29 Metals	[2.0]	1. 2024 Annual Report: https://cdn.prod.website-files.com/640b21824379a3d73f0eecde/6809618ff3a965fb403c70dd_21167_29Metals_AR24_Interactive_V1_9.4mb.pdf
Mt Collin	Aeris	[5.8]	1. March 2024 Quarterly Activities Report: https://clients3.weblink.com.au/pdf/AIS/02800843.pdf 2. June 2024 Quarterly Activities Report: https://clients3.weblink.com.au/pdf/AIS/02832919.pdf 3. September 2024 Quarterly Activities Report: https://clients3.weblink.com.au/pdf/AIS/02873856.pdf 4. December 2024 Quarterly Activities Report: https://clients3.weblink.com.au/pdf/AIS/02907951.pdf
Nova-Bolinger	IGO	[8.2]	1. March 2024 Quarterly Activities Report: https://www.igo.com.au/site/pdf/dd670967-c78b-482e-a103-f43f5259a3f4/March-2024-Quarterly-Activities-Report.pdf?Platform=ListPage 2. June 2024 Quarterly Activities Report: https://www.igo.com.au/site/pdf/bae9b6e7-5e82-4030-a5e5-bc26741b49bf/June-2024-Quarterly-Activities-Report.pdf?Platform=ListPage 3. September 2024 Quarterly Activities Report: https://www.igo.com.au/site/pdf/a239dba1-17e9-49ae-9fa5-745eab4c94dc/September-2024-Quarterly-Report.pdf?Platform=ListPage 4. December 2024 Quarterly Activities Report: https://www.igo.com.au/site/pdf/87eae4d2-c74f-4968-b81c-a62de8b4d038/December-2024-Quarterly-Activities-Report.pdf?Platform=ListPage
Eloise	AIC Mines	[12.9]	1. March 2024 Quarterly Activities Report: https://app.sharelinktechnologies.com/announcement/asx/1a900b139dbe86d12c29abe92564eb5b 2. June 2024 Quarterly Activities Report: https://app.sharelinktechnologies.com/announcement/asx/c2eb72ed48bdf2c7218cab5cfb984557 3. September 2024 Quarterly Activities Report: https://app.sharelinktechnologies.com/announcement/asx/49fb33e7579b4ac8ce99d0948e5f3bf4 4. December 2024 Quarterly Activities Report: https://app.sharelinktechnologies.com/announcement/asx/7f2c08cad032a6e3b0d28baa340ealf3
Tritton	Aeris	[18.6]	1. March 2024 Quarterly Activities Report: https://clients3.weblink.com.au/pdf/AIS/02800843.pdf 2. June 2024 Quarterly Activities Report: https://clients3.weblink.com.au/pdf/AIS/02832919.pdf 3. September 2024 Quarterly Activities Report: https://clients3.weblink.com.au/pdf/AIS/02873856.pdf 4. December 2024 Quarterly Activities Report: https://clients3.weblink.com.au/pdf/AIS/02907951.pdf
Golden Grove	29 Metals	[21.9]	1. 2024 Annual Report: https://cdn.prod.website-files.com/640b21824379a3d73f0eecde/6809618ff3a965fb403c70dd_21167_29Metals_AR24_Interactive_V1_9.4mb.pdf
Cozamin	Capstone	[24.9]	1. 2024 Annual Information Form: https://capstonecopper.com/wp-content/uploads/2025/03/2024-Annual-Information-Form.pdf

Appendix 3 – 2024 Copper Production Data

Property	Current Owner	2024 Cu Metal Production (Kt)	Source Data
Northparkes	Evolution	[28.6]	1. March 2024 Quarterly Report: https://clients3.weblink.com.au/pdf/EVN/02796233.pdf 2. June 2024 Quarterly Report: https://clients3.weblink.com.au/pdf/EVN/02829044.pdf 3. September 2024 Quarterly Report: https://clients3.weblink.com.au/pdf/EVN/02829044.pdf 4. December 2024 Quarterly Report: https://clients3.weblink.com.au/pdf/EVN/02904966.pdf
Cobar	MAC	[41.1]	1. March 2024 Quarterly Activities Report: https://s202.q4cdn.com/908723817/files/doc_financials/2024/q1/2024-04-29-MAC-Operational-Update-Q1-2024-NYSE.pdf 2. June 2024 Quarterly Activities Report: https://s202.q4cdn.com/908723817/files/doc_financials/2024/q2/2024-07-22-MAC-Operational-Update-Q2-2024-NYSE.pdf 3. September 2024 Quarterly Activities Report: https://s202.q4cdn.com/908723817/files/doc_financials/2024/q3/2024-10-21-MAC-Q3-Operational-Update.pdf 4. December 2024 Quarterly Activities Report: https://s202.q4cdn.com/908723817/files/doc_news/2025/2025-01-28-MAC-Quarterly-Q4-Operational-Update-NYSE-cl.pdf
Mantos Blancos	Capstone	[44.6]	1. 2024 Annual Report: https://capstonecopper.com/wp-content/uploads/2025/03/2024-Annual-Information-Form.pdf
Ernest Henry	Evolution	[52.1]	1. 2024 Annual Report: https://clients3.weblink.com.au/pdf/EVN/02867502.pdf
Pinto Valley	Capstone	[57.3]	1. 2024 Annual Information Form: https://capstonecopper.com/wp-content/uploads/2025/03/2024-Annual-Information-Form.pdf
Mantoverde	Capstone	[57.7]	1. 2024 Annual Information Form: https://capstonecopper.com/wp-content/uploads/2025/03/2024-Annual-Information-Form.pdf
MATSA	Sandfire	[56.5]	1. 2024 Annual Report: https://www.sandfire.com.au/wp-content/uploads/2024/08/FY24-Annual-Report.pdf
Sierra Gorda	South 32	[65.9]	1. March 2024 Quarterly Report: https://www.south32.net/docs/default-source/exchange-releases/quarterly-report---march-2024-0xba87b5abc27fbc92.pdf?sfvrsn=895b5321_0 2. June 2024 Quarterly Report: https://www.south32.net/docs/default-source/exchange-releases/quarterly-report-june-2024-0xe265265507ed180b.pdf?sfvrsn=cc0bc7eb_0 3. September 2024 Quarterly Report: https://www.south32.net/docs/default-source/exchange-releases/september-2024-quarterly-report-0x95a37eea33d2e39c.pdf?sfvrsn=2d6fcb5e_0 4. December 2024 Quarterly Report: https://www.south32.net/docs/default-source/all-financial-results/quarterly-report-december-2024.pdf?sfvrsn=79ec6172_1