

RESIGNATION OF NON-EXECUTIVE DIRECTOR

West Coast Silver Limited (ASX: WCE) (“West Coast Silver” or the “Company”) wishes to advise that Mr Robert Mosig has tendered his resignation as a director of the Company. Mr Mosig has provided one month’s notice, and his resignation will take effect on 16 October 2025 as he pursues other business interest.

The Board thanks Mr Mosig for his dedication and invaluable contribution to the Company since his appointment and wishes him every success in his future endeavours.

This ASX announcement has been authorised for release by the Board of Directors of West Coast Silver Limited. For further information, please contact:

Bruce Garlick
Executive Director
West Coast Silver Limited
E: info@westcoastsilver.com.au

The Elizabeth Hill Project

Elizabeth Hill is one of Australia's high-grade silver projects and has a proven production history outlined below:

- **High grades enabled low processing tonnes:** 1.2Moz of silver was produced from just 16,830t of ore at a head grade of 2,194g/t (70.5 oz/t Ag)¹.
- **Previous mining operation ceased in 2000:** because of low silver prices (US\$5)²
- **Simplistic historical processing technique: native silver** was recovered via **low-cost** gravity separation techniques.
- **Untapped potential remains** in ground with deposit open at depth and recent consolidation of land package offers potential to discover more Elizabeth Hill style deposits.
- **Tier 1 Mining Jurisdiction located on a mining lease** with potential processing option at the nearby Radio Hill site.

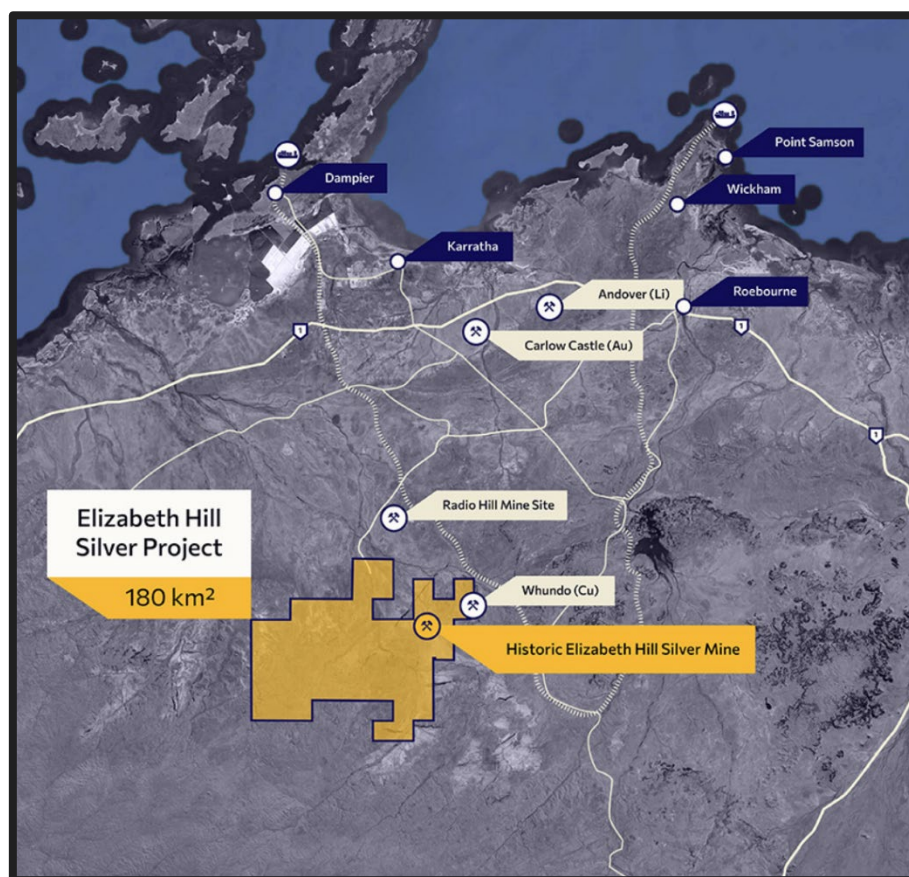


Figure 1 – Location of Project Combined Tenements

Through the consolidation of the surrounding land packages into a single contiguous 180km² package significant exploration and growth potential exists both near mine and regionally.

The land package holds a significant portion of the Munni Munni fault system which is considered prospective for Elizabeth Hill look-a-like silver deposits.

¹ WAMEX Annual Report, 1 April 2014 to 31 March 2015, Elizabeth Hill Silver Project, Global Strategic Metals NL, p16

² www.kitco.com/charts/silver