

*and Queensland's*

Unlocking Victoria's Copper-Gold  
Potential:  
multiple drill-ready discovery  
opportunities and significant  
Government funding!

**November 2016**



## Disclaimer

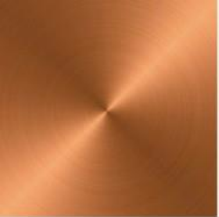
This presentation contains only an overview of Stavely Minerals Limited (“Stavely” or the “Company”) and its activities and operations. The contents of this presentation, including matters relating to the geology and exploration potential of the Company’s projects, may rely on various assumptions and subjective interpretations which it is not possible to detail in this presentation and which have not been subject to any independent verification.

This presentation contains a number of forward-looking statements. Known and unknown risks and uncertainties, and factors outside of the Company’s control, may cause the actual results, performance and achievements of the Company to differ materially from those expressed or implied in this presentation.

To the maximum extent permitted by law, Stavely does not warrant the accuracy, currency or completeness of the information in this presentation, nor the future performance of the Company, and will not be responsible for any loss or damage arising from the use of the information.

The information contained in this presentation is not a substitute for detailed investigation or analysis of any particular issue. Current and potential investors should seek independent advice before making any investment decision in regard to the Company or its activities.

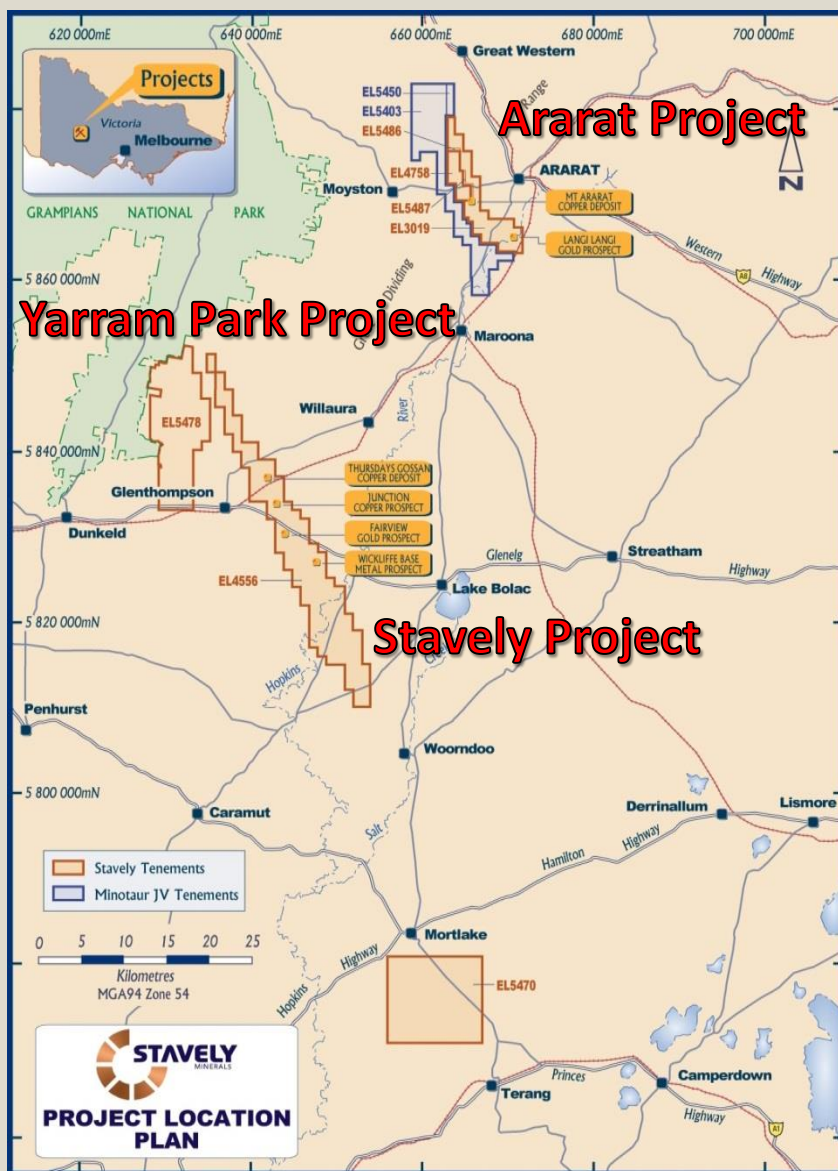




# PROJECTS



# VICTORIAN PROJECT LOCATIONS



## Victorian Projects

The Ararat Project is prospective for VMS base metals-gold and 'Stawell-style' gold mineralisation.

The Stavely Project is prospective for ancient porphyry copper-gold, VMS base metals-gold and intrusive related gold mineralisation.

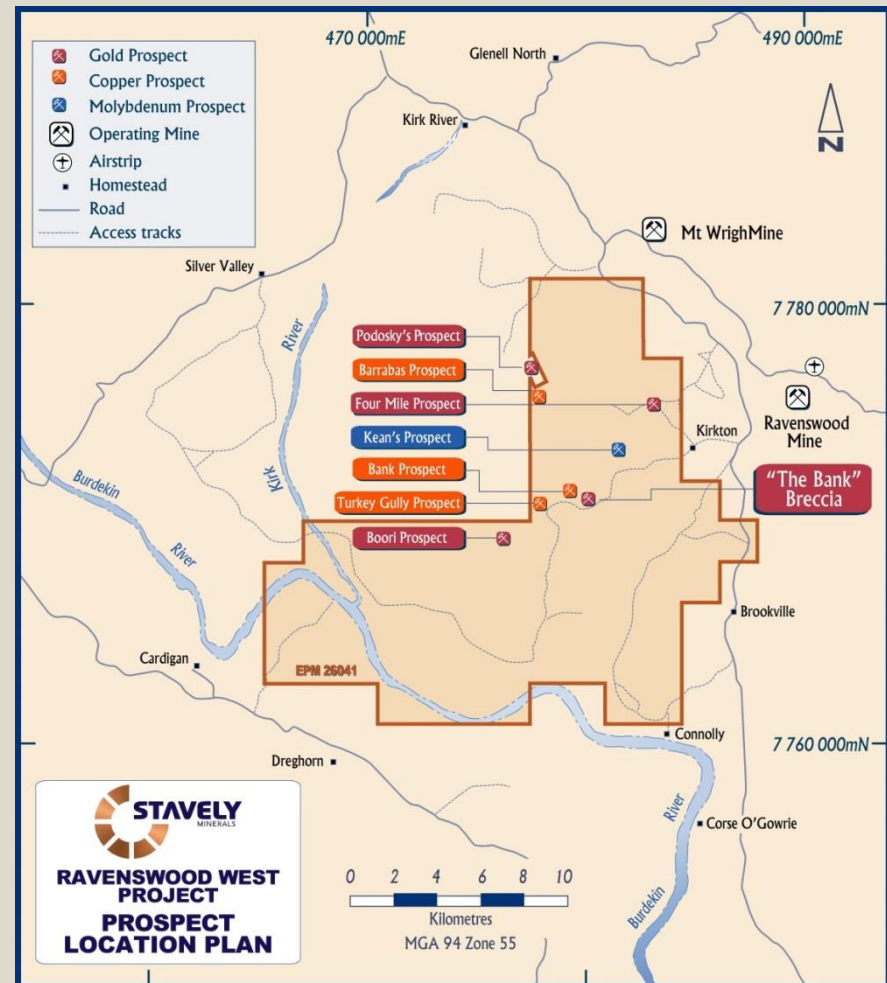
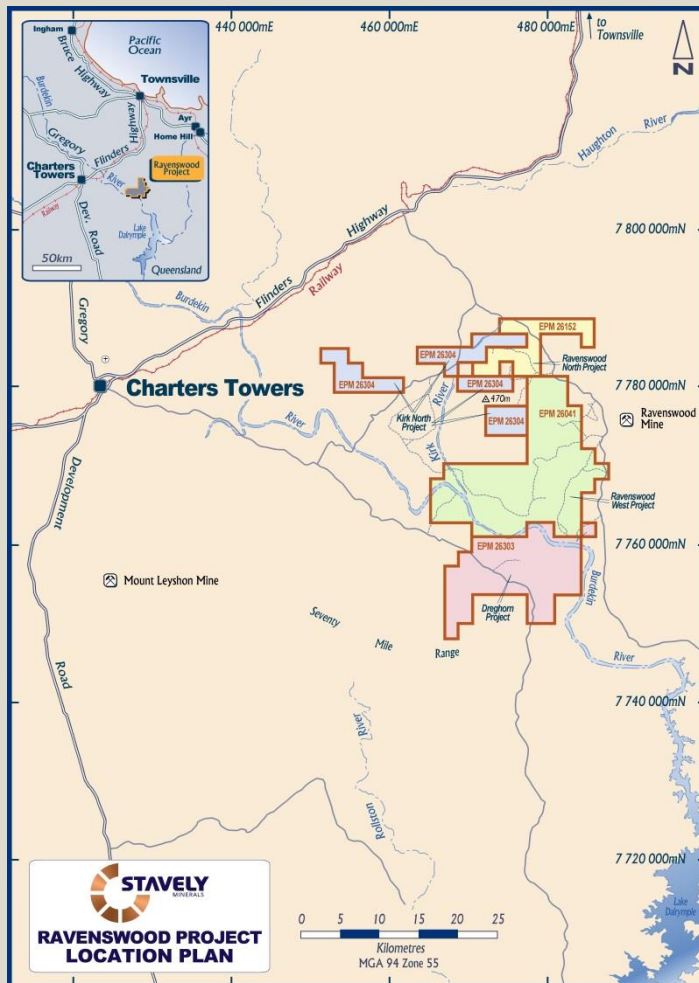
The Yarram Park Project is prospective for ancient porphyry copper-gold and intrusive related gold mineralisation.



# QUEENSLAND PROJECT LOCATION



The Ravenswood Project is prospective for porphyry copper-moly-gold, quartz-sulphide vein-hosted gold and breccia-hosted gold mineralisation.





At the **Ararat Project**, hosted in a Besshi-style VMS:

- Inferred Mineral Resources of 1.3Mt at 2.0% copper, 0.5 g/t gold, 0.4% zinc and 6 g/t silver for 30kt of contained copper

At the **Stavely Project** hosted in a secondary chalcocite-enriched blanket:

- Inferred Mineral Resources of 28Mt at 0.4% copper for 110kt of contained copper

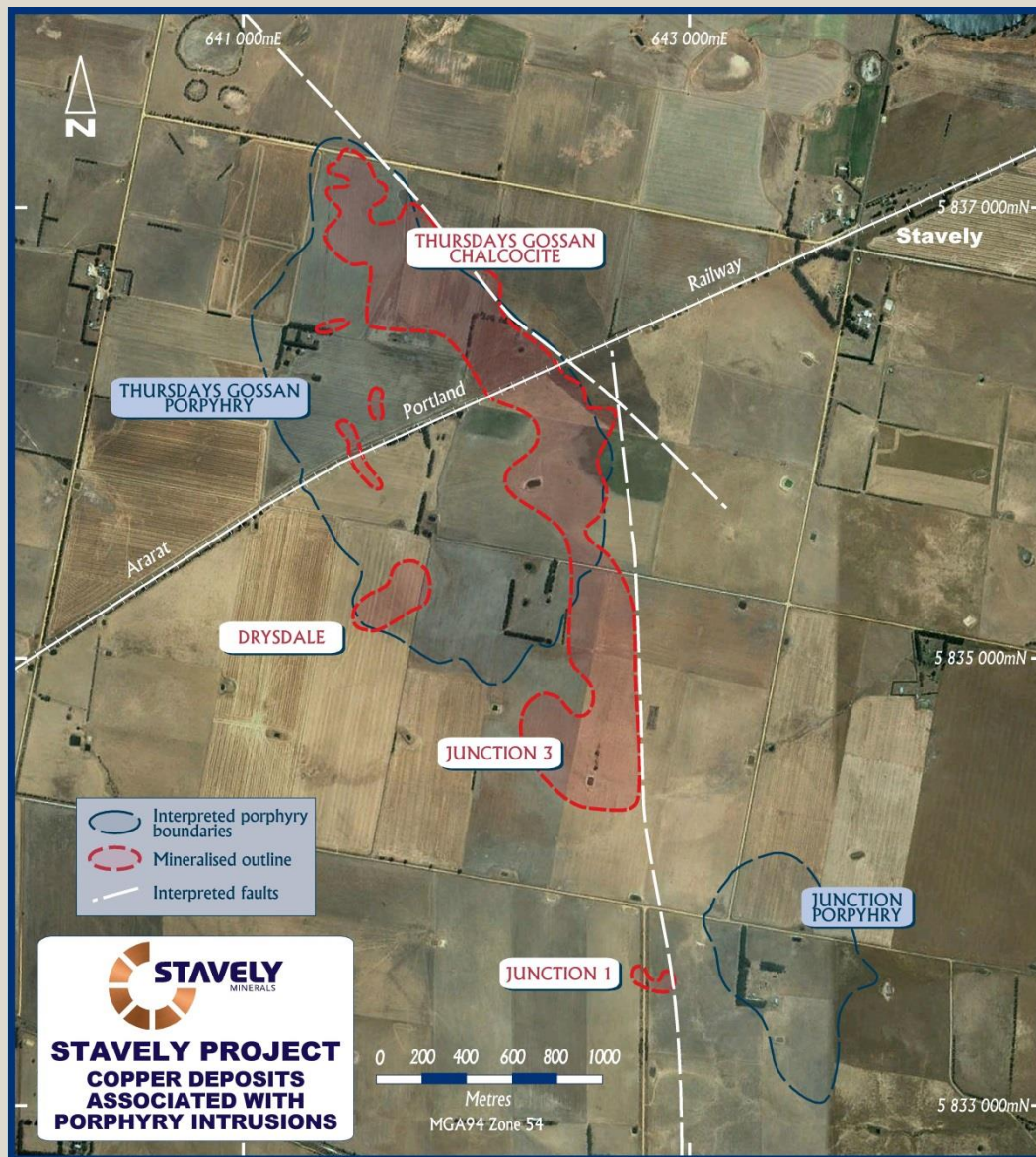
<sup>1</sup> reported in compliance with JORC 2012, see ASX announcement 8 September 2015 and available from [www.stavely.com.au](http://www.stavely.com.au)



# THURSDAY'S GOSSAN CHALCOCITE 'BLANKET'



# STAVELY PROJECT



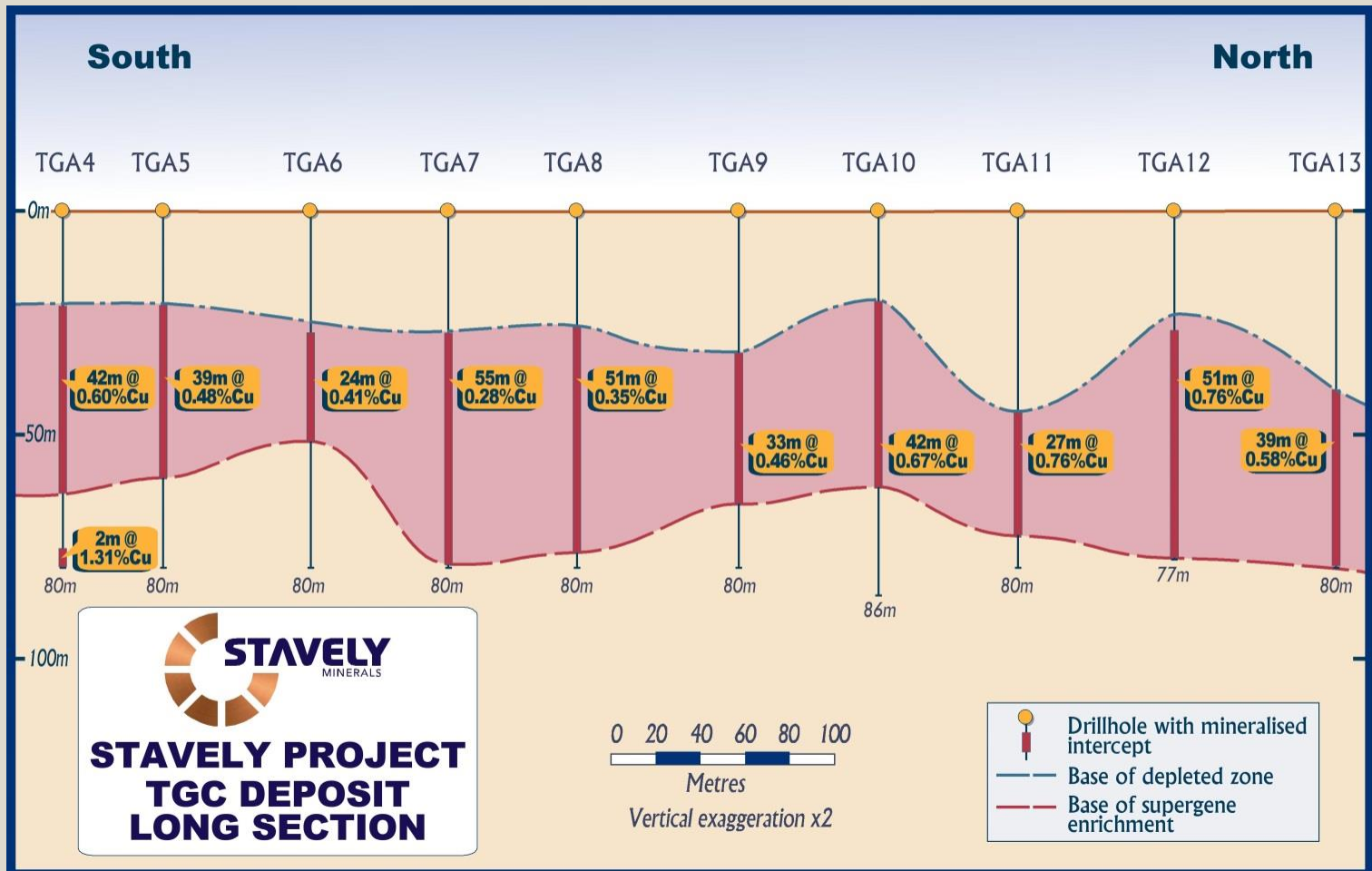
Inferred Mineral Resources of **28Mt** at **0.4% copper** for 110kt of contained copper



# ARARAT PROJECT



Conceptual Study provided sufficiently positive economic outcomes to progress to a Scoping Study<sup>1</sup>



<sup>1</sup> see ASX announcement 19 July 2016 and available from [www.stavely.com.au](http://www.stavely.com.au)



# ARARAT PROJECT



Conceptual Study provided sufficiently positive economic outcomes to progress to a Scoping Study<sup>1</sup>

<sup>1</sup> see ASX announcement 19 July 2016 and available from [www.stavely.com.au](http://www.stavely.com.au)

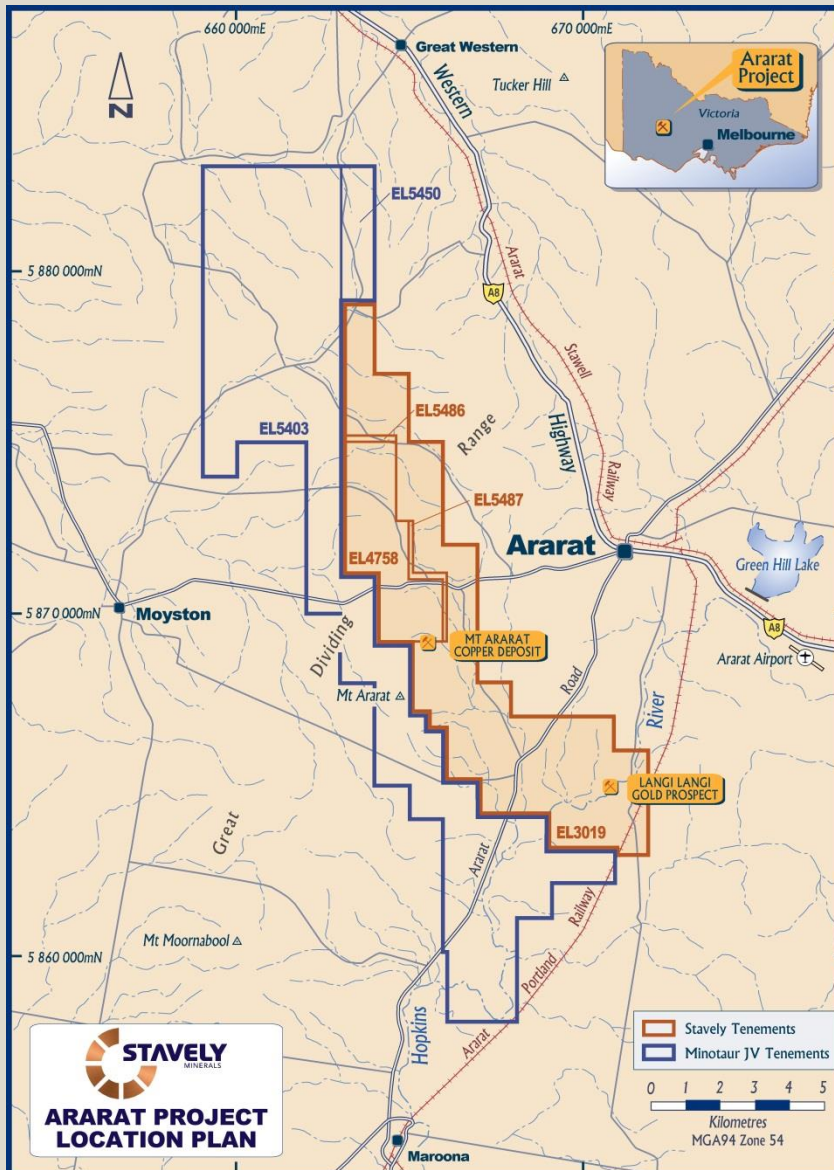


A decorative vertical bar runs down the left side of the slide. It is divided into two sections: the top section is a solid orange color, and the bottom section is a light beige color with thin, horizontal white lines.

# ARARAT PROJECT



# ARARAT PROJECT



## The Ararat Project

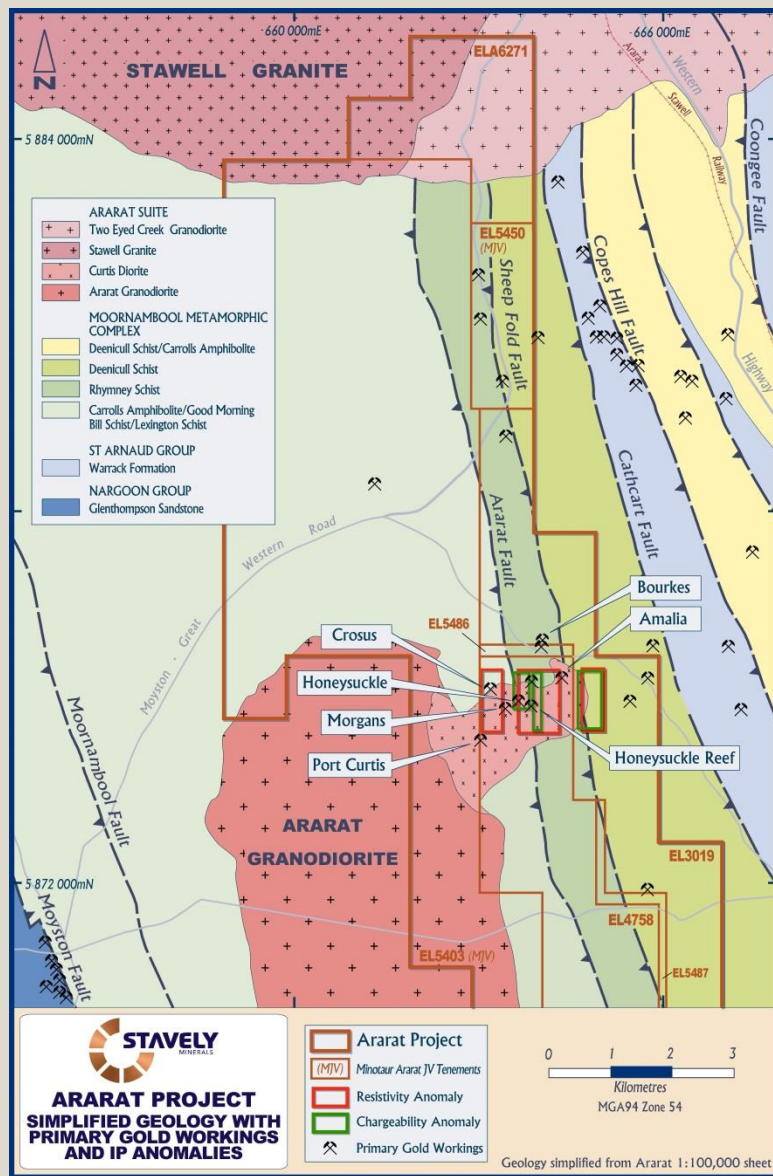
Hosts the:

Mt Ararat Besshi-style  
copper-gold VMS

and 'Stawell-style' gold  
targets



# ARARAT PROJECT

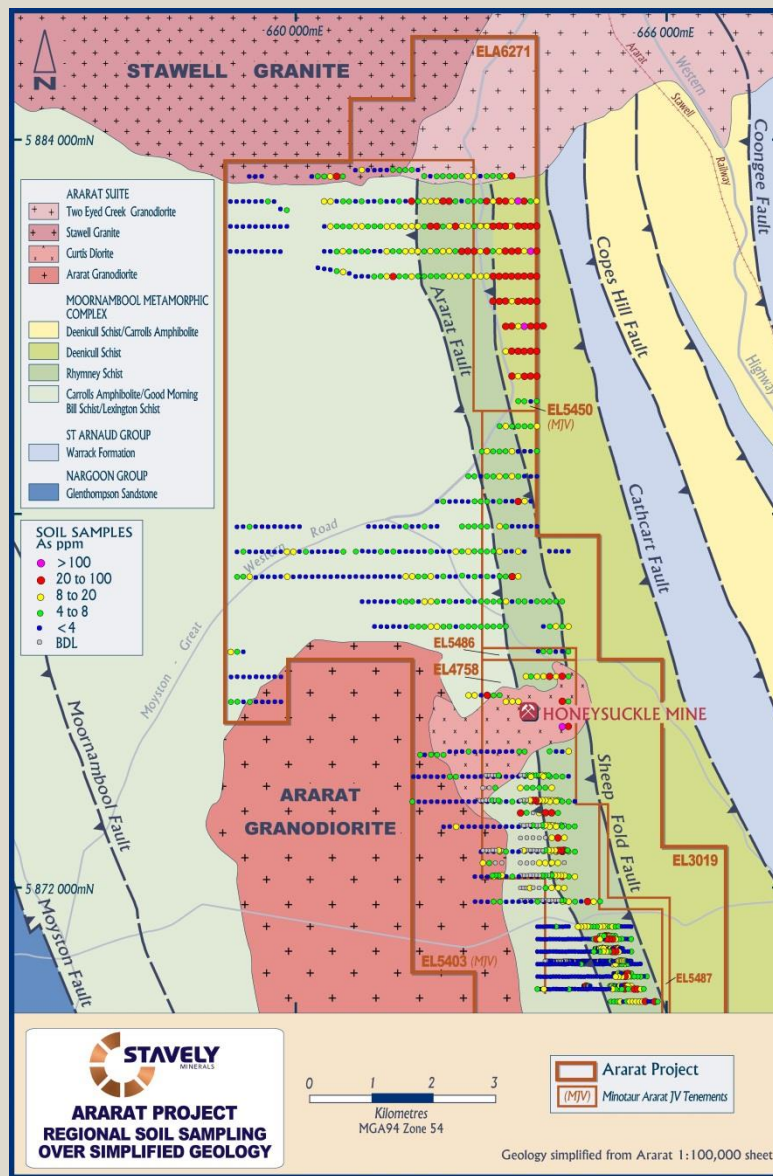


## Port Curtis Goldfield

- ✓ Historic gold mines hosted in late-stage granite
- ✓ Recent IP geophysics has identified a number of chargeability / resistivity anomalies
- ✓ Surface rock chips to 5.33g/t gold



# ARARAT PROJECT



## Stawell Granite South

- ✓ Recent soil geochemistry has identified a 2.8km long arsenic anomaly with gold anomalism to 0.24g/t gold
- ✓ Historic gold mines Plantagenet, New Hope and Goldburra Mines.
- ✓ Mirror image of the Stawell Gold Mine on the north side of the Stawell Granite

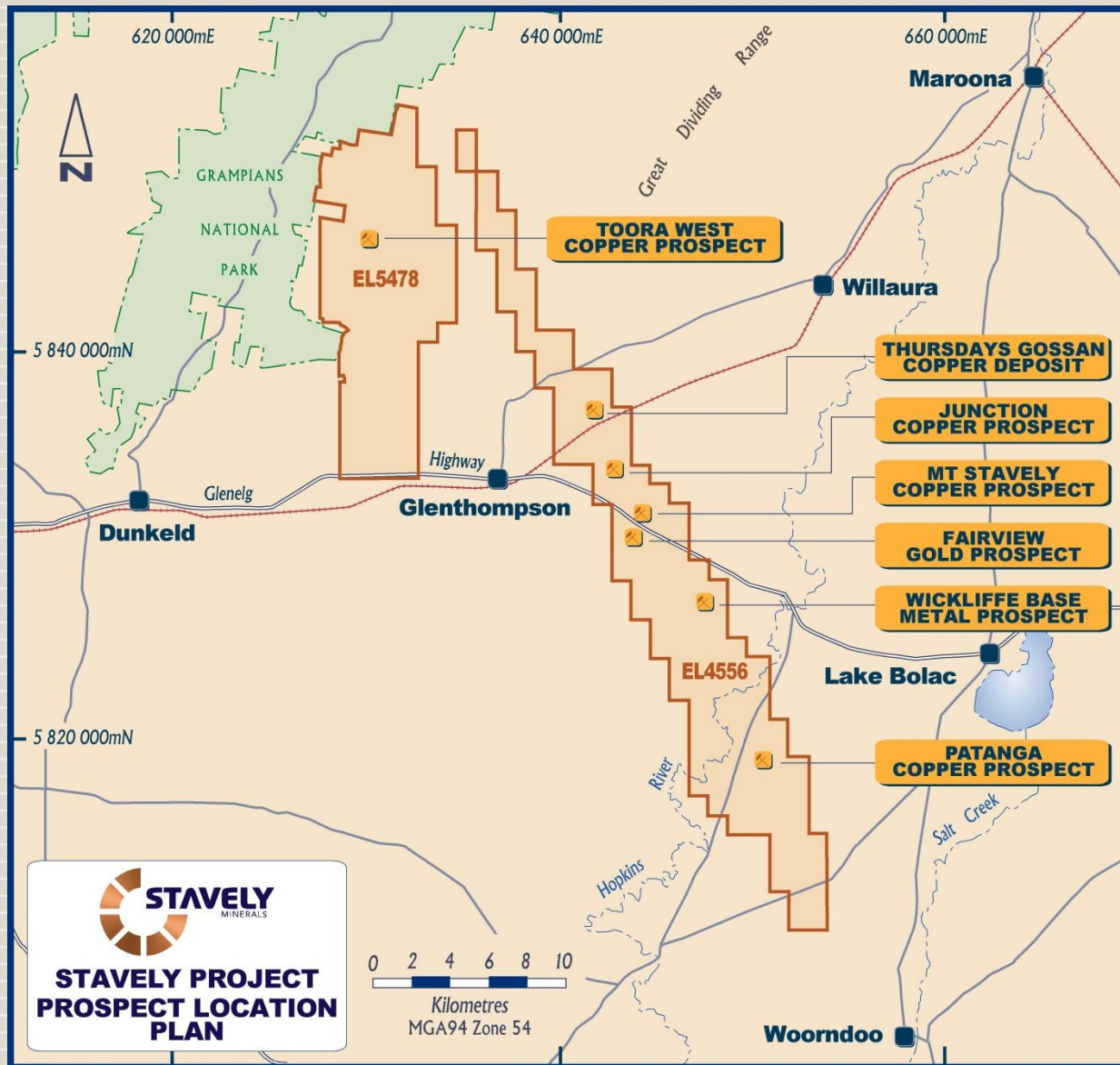


A decorative vertical bar runs down the left side of the slide. It is divided into two sections: the top section is a solid orange color, and the bottom section is a light beige color with thin, horizontal white lines.

# **STAVELY AND YARRAM PARK PROJECTS**



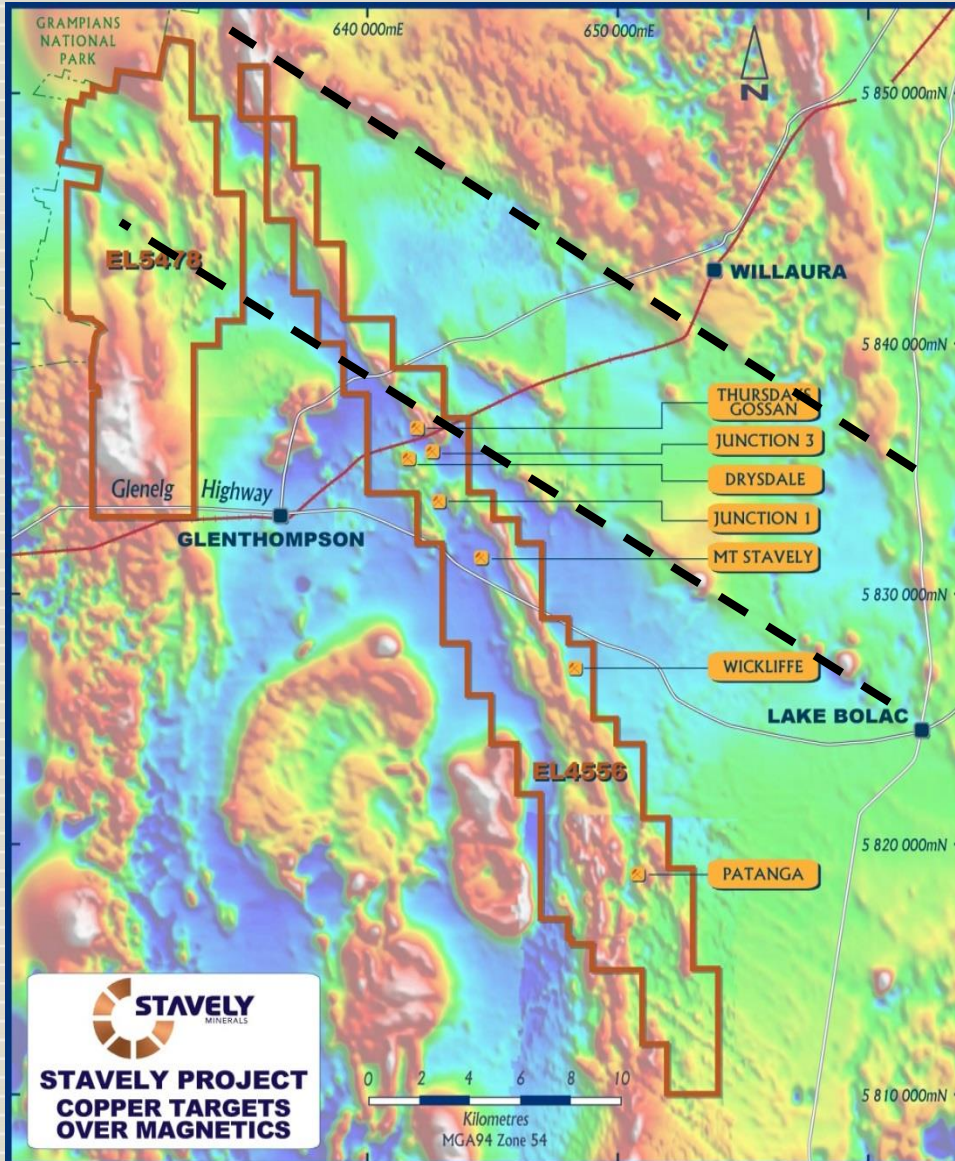
# STAVELY AND YARRAM PARK PROJECTS



- Thursday's Gossan chalcocite enriched blanket – Inferred Mineral Resource of **28Mt at 0.4% copper** containing 110kt copper
- Thursday's Gossan porphyry
- Junction porphyry
- Mount Stavely porphyry
- Fairview Gold prospect
- Wickliffe VMS prospect
- Patanga copper prospect
- Toora West porphyry prospect



# STAVELY AND YARRAM PARK PROJECTS



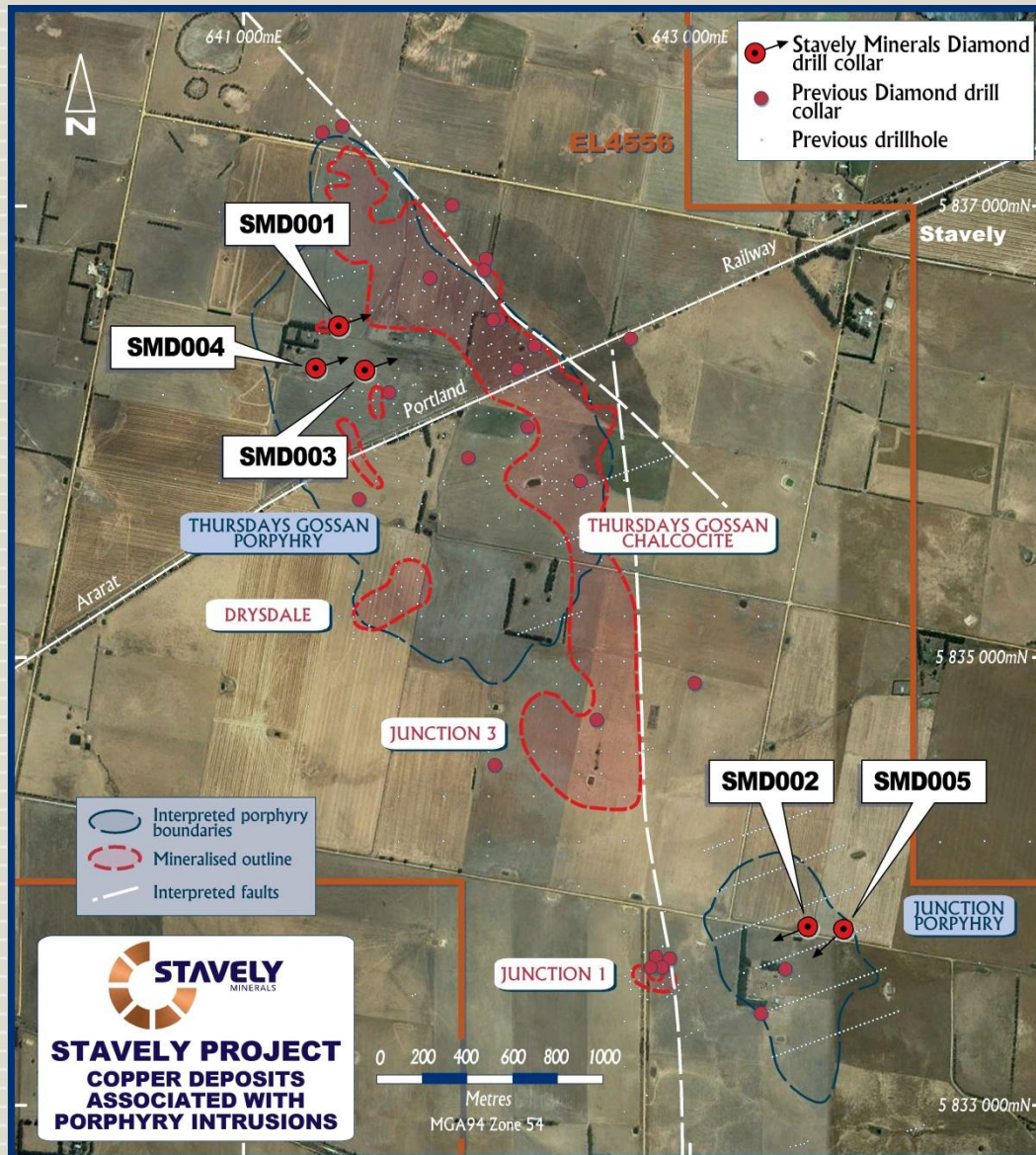
## Stavely Volcanic Arc

Similar structural setting to Cadia Valley

- ~N-S trending volcanic belt
- Major NW trending structures



# STAVELY PROJECT



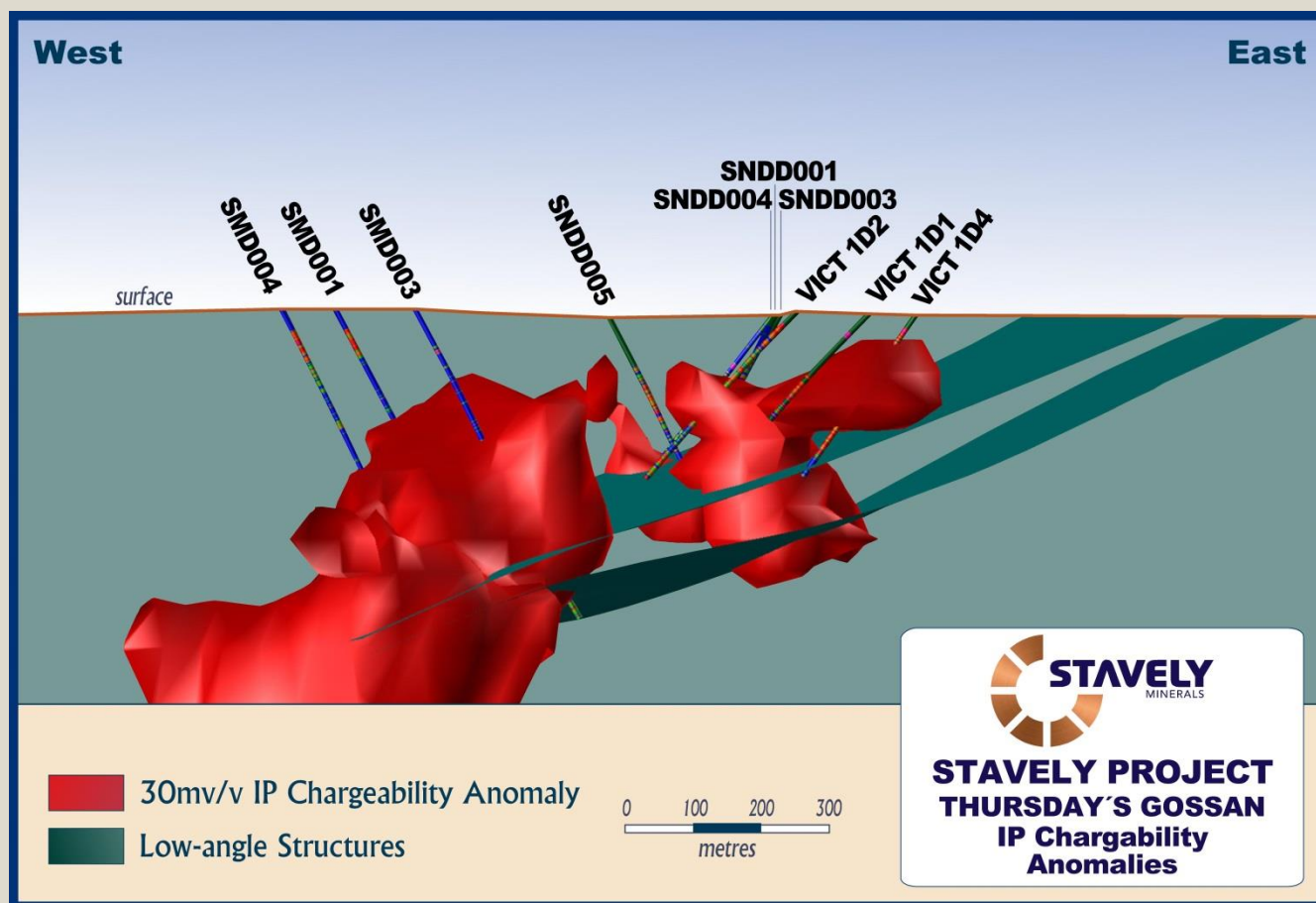
## Thursday's Gossan Porphyry

Stavely Minerals drilled 3 deep diamond drill holes (between 532m to 640m deep) into an induced polarisation (IP) chargeability anomaly



## Thursday's Gossan Porphyry

Drilling intercepted well-developed phyllic alteration (sericite-pyrite) which corresponded well with the IP chargeability anomaly



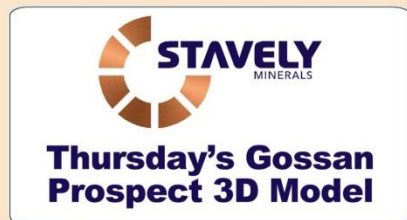
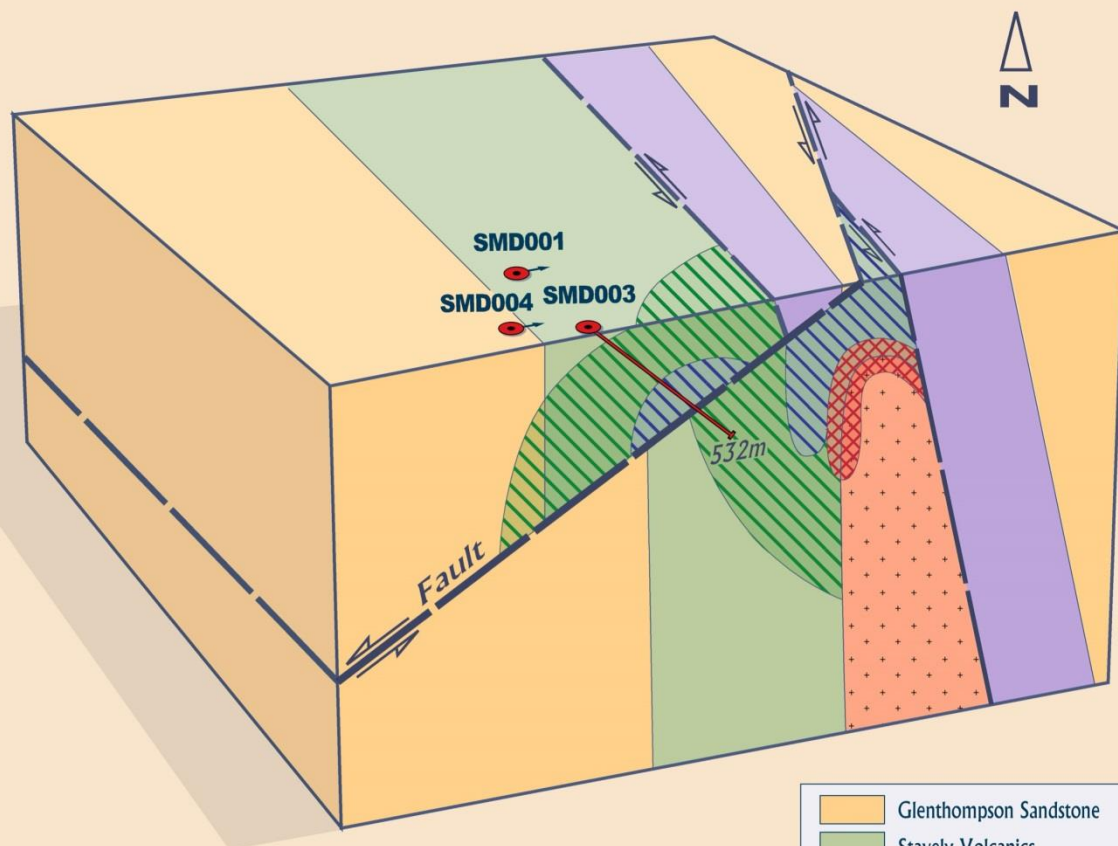


# STAVELY PROJECT



## Thursday's Gossan Porphyry

The three deep diamond drill holes identified a low-angle structural offset to the porphyry system

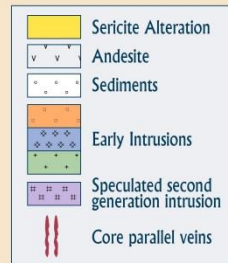


not to scale

~ 500 metres

	Glenthompson Sandstone
	Stavely Volcanics
	Williamson's Road Serpentine
	Porphyry
ALTERATION AND MINERALISATION	
	Propylitic (Chlorite)
	Phyllic (Sericate + Pyrite)
	Potassic (K-spar, Biotite, Chalcocopyrite, Bornite) Target Ore Zone

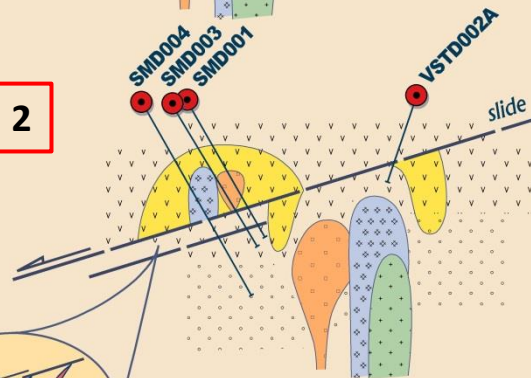




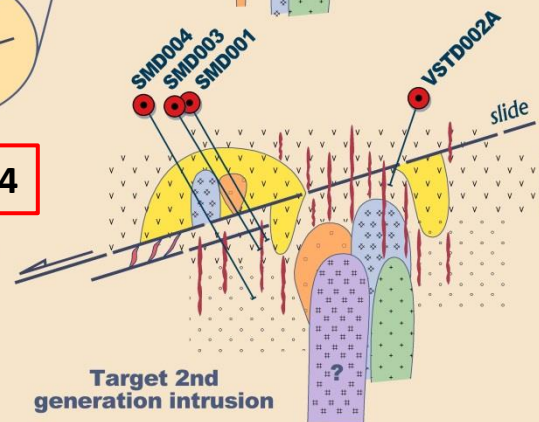
1



2



3 & 4



**Conceptual model for  
unroofing of the  
Thursday's Gossan  
Prospect**

not to scale

(after Corbett, 2014)

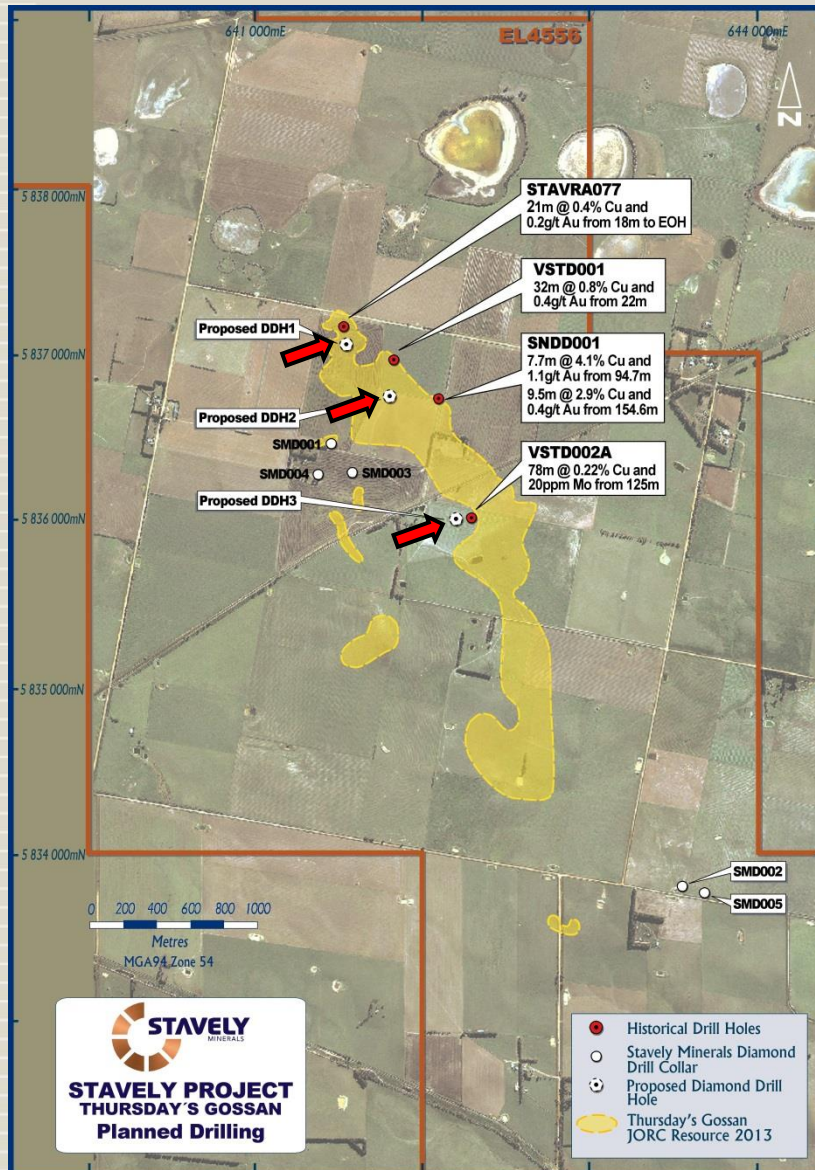
## Thursday's Gossan Porphyry

Interpreted evolution of the porphyry system:

1. Emplacement of early porphyry phases and incipient copper mineralisation
2. Low angle structural unroofing
3. Resurgent second-phase intrusion
4. High-grade copper-gold mineralisation



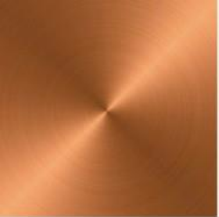
# STAVELY PROJECT



## Thursday's Gossan Porphyry

- ✓ Recently announced Victorian Government co-funding
  - 2 lines x IP geophysics
  - 3 x diamond drill holes
- ✓ 2 x drill holes targeting beneath the structure best gold-copper intercepts:
  - 21m at 0.4% copper and 0.2g/t gold
  - 32m at 0.8% copper and 0.4g/t gold
  - 7.7m at 4.1% copper and 1.1g/t gold
  - 9.5m at 2.9% copper and 0.4g/t gold
- ✓ 3<sup>rd</sup> drill hole targeting strong copper-moly anomaly

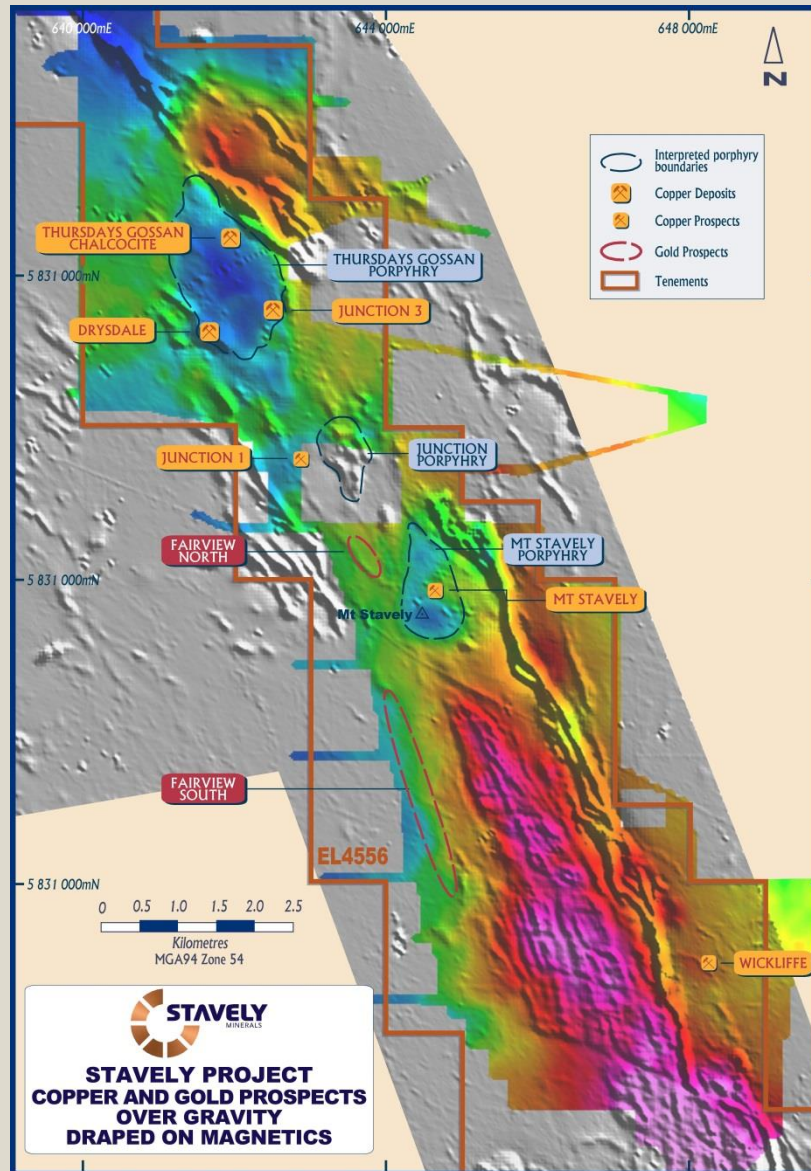




# MOUNT STAVELY AND FAIRVIEW



# STAVELY PROJECT

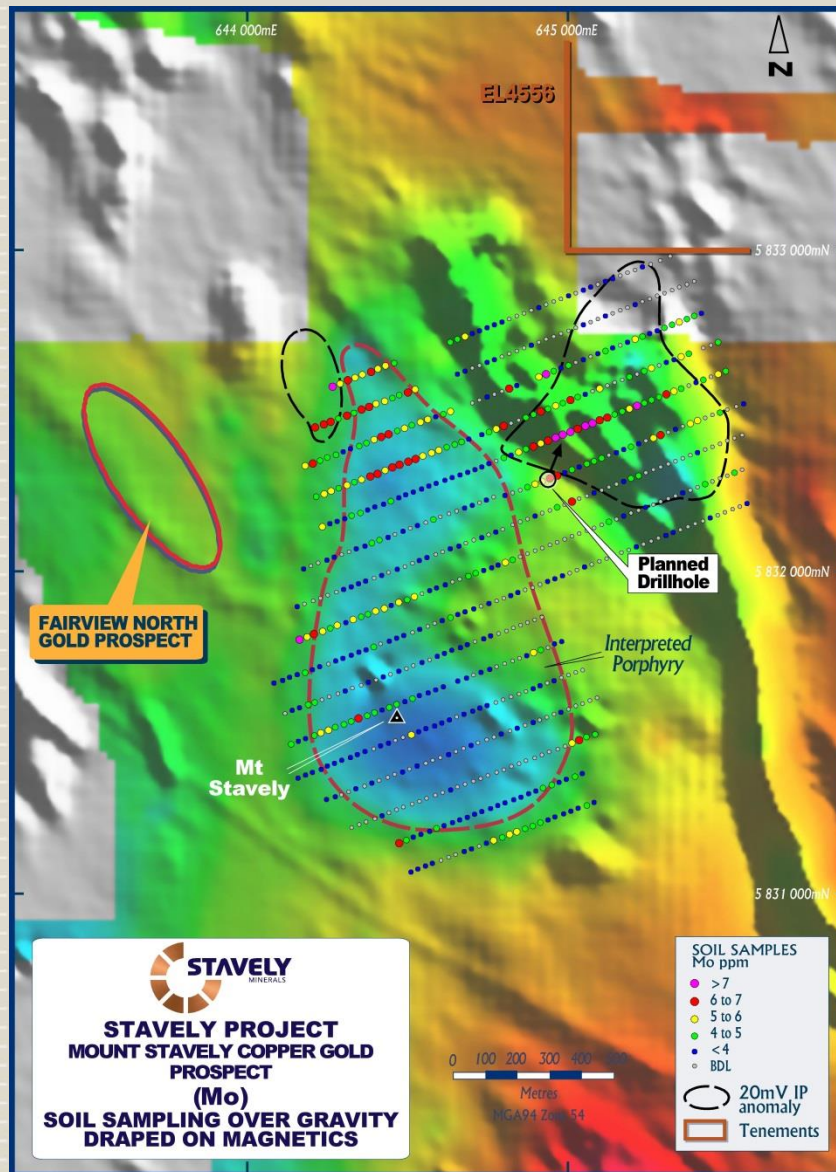


## Mount Stavely Porphyry and Fairview Gold

- ✓ Interpreted buried porphyry reflected in pronounced gravity low
- ✓ 5km of peripheral mesothermal to epithermal gold associated with quartz-sulphide veins (adularia noted)



# STAVELY PROJECT

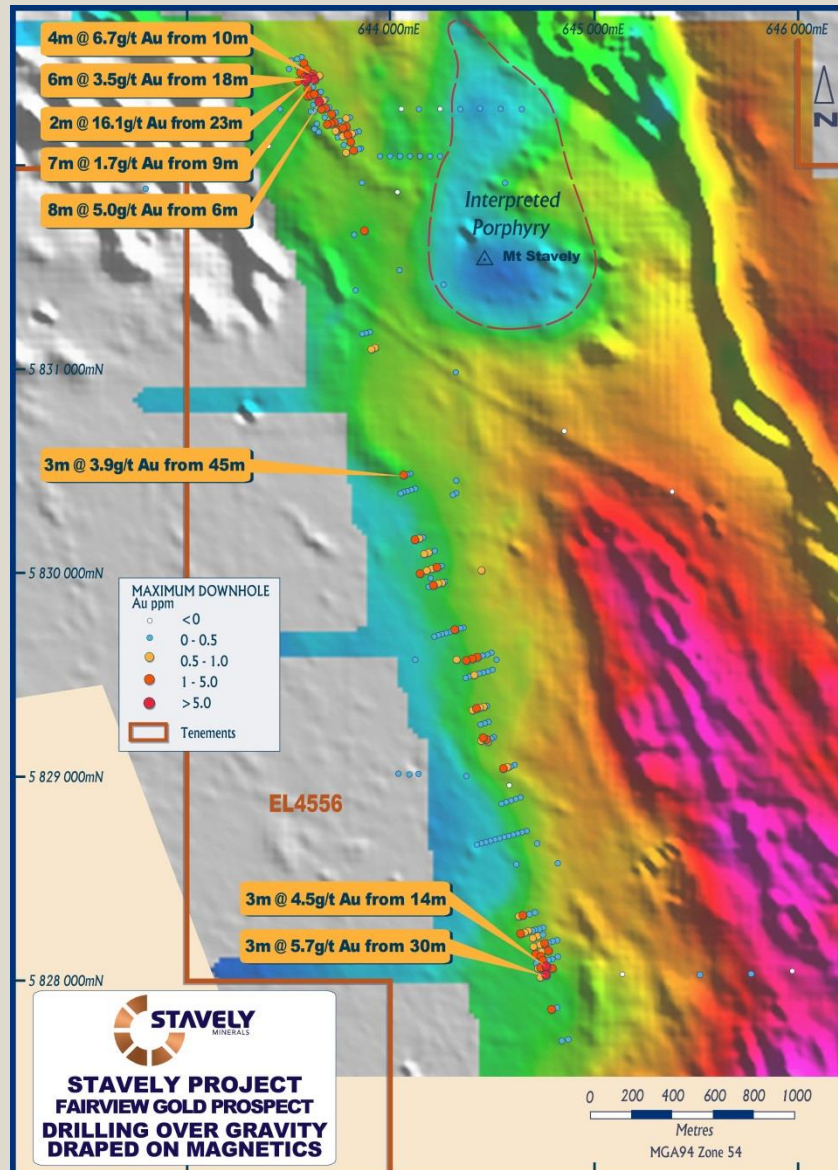


## Mount Stavely Porphyry

- ✓ Inferred buried porphyry reflected in pronounced gravity low
- ✓ IP chargeability anomaly on NE margin
- ✓ Coincident molybdenum soil geochemistry anomaly (should indicate the centre of porphyry-style mineralisation)
- ✓ Also highest gold result at 49ppb
- ✓ **Victorian Government co-funding for one diamond drill hole to test, previously undrilled**



# STAVELY PROJECT



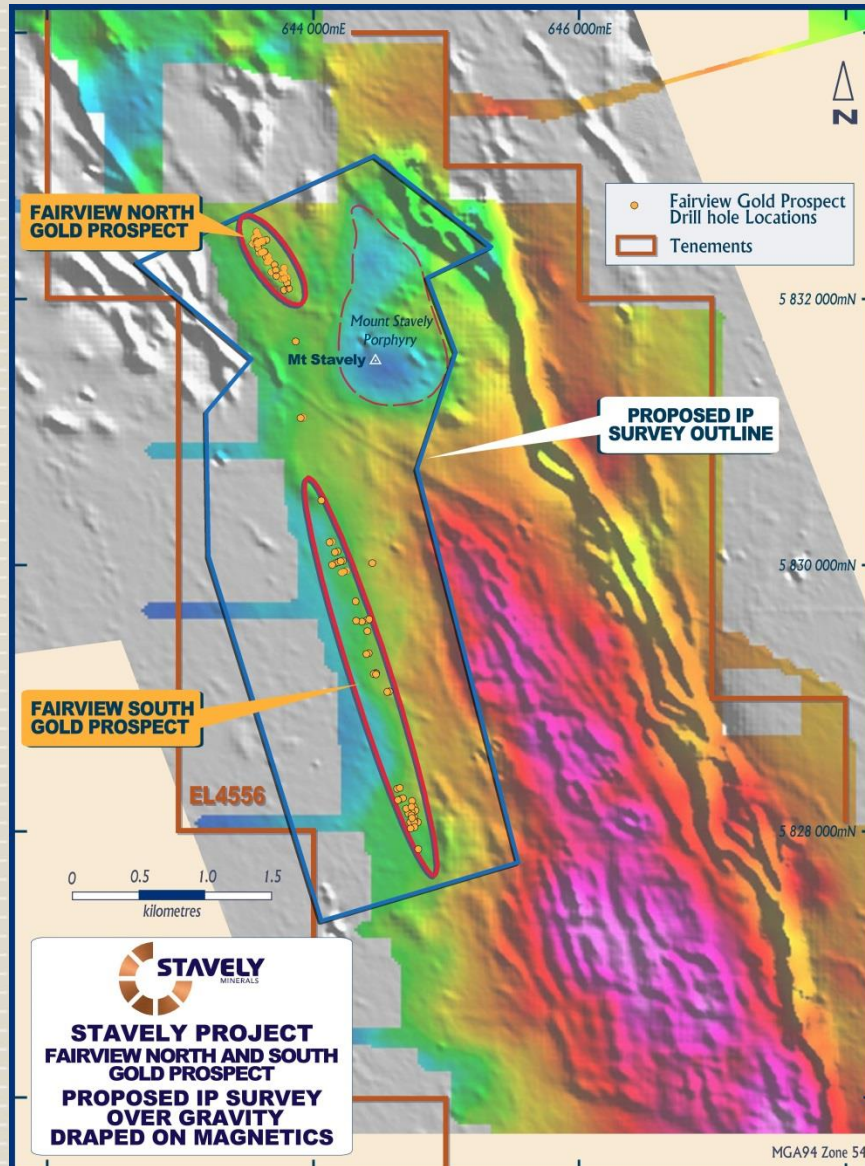
## Fairview Gold Prospect

- ✓ 5km strike of mesothermal to epithermal quartz-sulphide vein related gold mineralisation
- ✓ Previous drilling intercepts including:
  - 2.5m at 17.4 g/t gold from 28m drill depth
  - 2m at 16.1 g/t gold from 23m drill depth
  - 4m at 6.7 g/t gold from 10m drill depth
  - 8m at 5.0 g/t gold from 6m drill depth



# STAVELY PROJECT

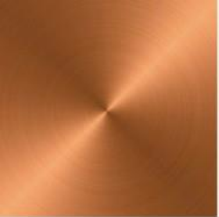
**STAVELY**  
MINERALS



## Fairview Gold Prospect

- ✓ Interpreted that the Fairview gold mineralisation is related to buried porphyry at Mount Stavely
- ✓ Similar setting to Lake Cowal
- ✓ **Victorian Government co-funding for 17 x 2km IP geophysical lines**



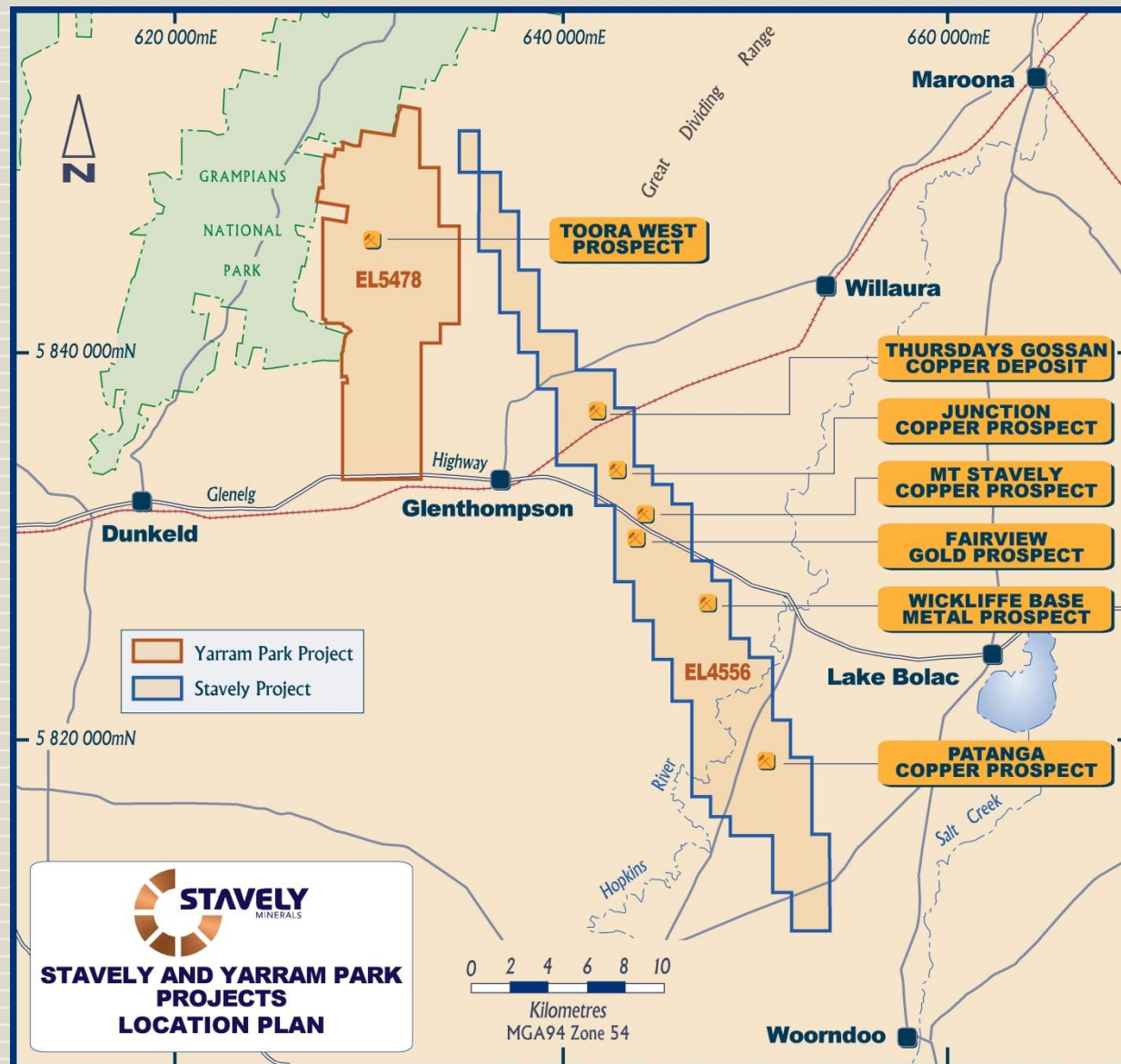


# YARRAM PARK



# YARRAM PARK PROJECT

**STAVELY**  
MINERALS



## Yarram Park Project

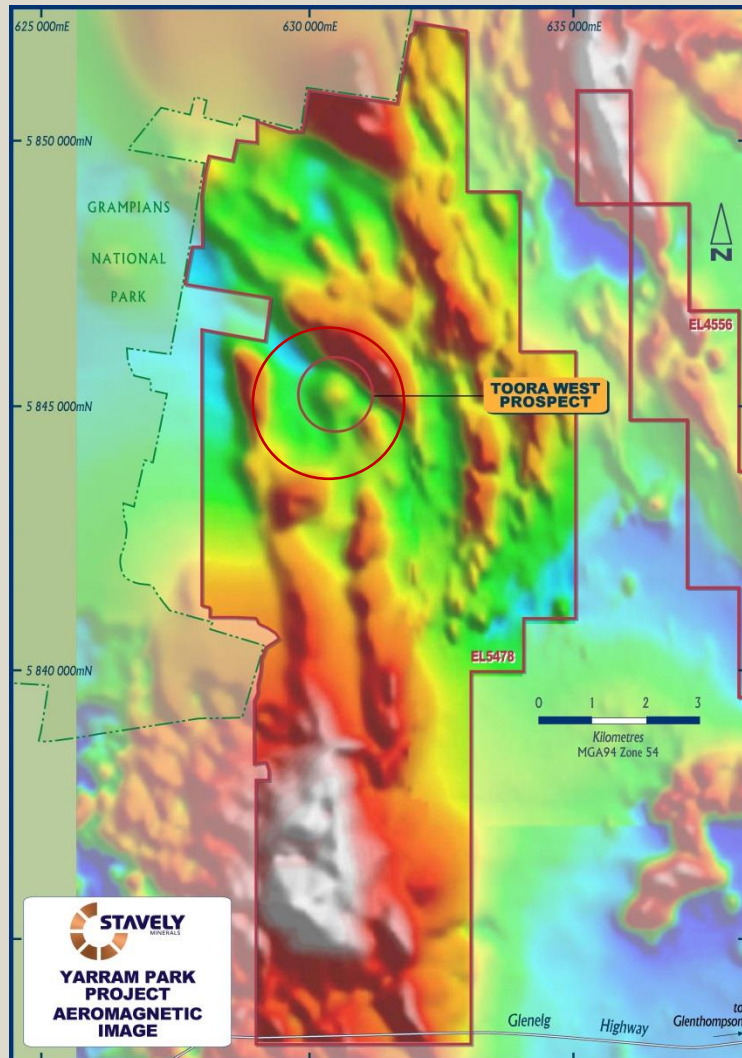
- ✓ Located on a structurally offset segment of the Stavelly Volcanic Arc
- ✓ Hosts the Toora West prospect



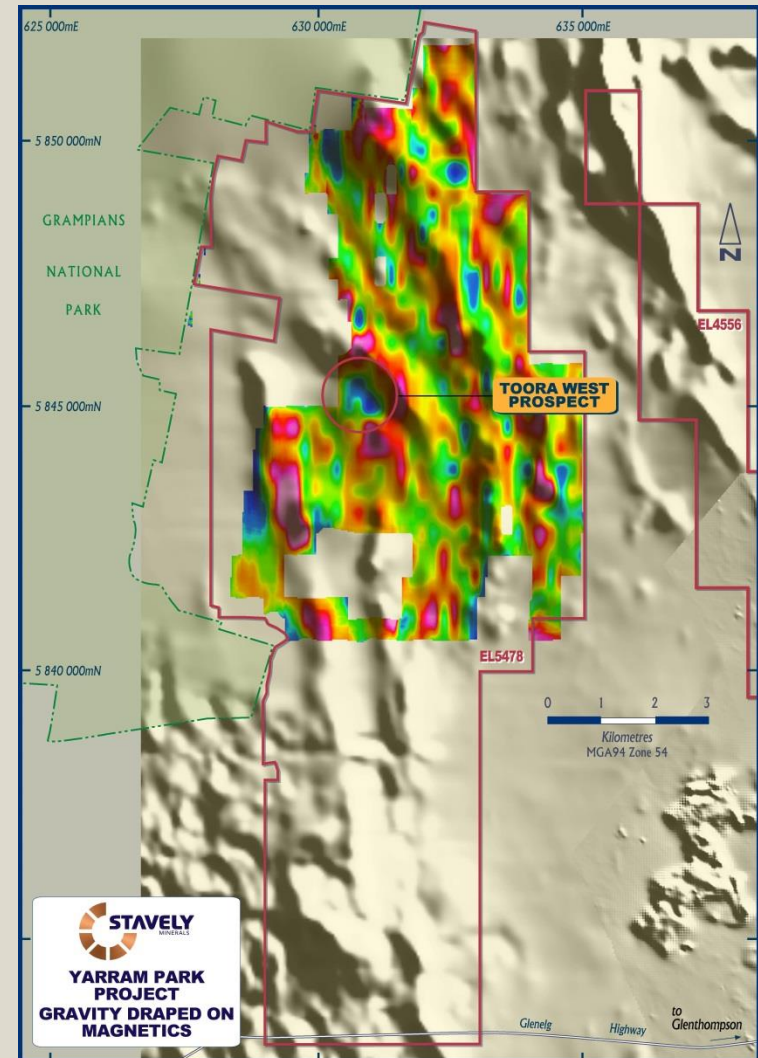
**STAVELY AND YARRAM PARK  
PROJECTS  
LOCATION PLAN**



# YARRAM PARK PROJECT



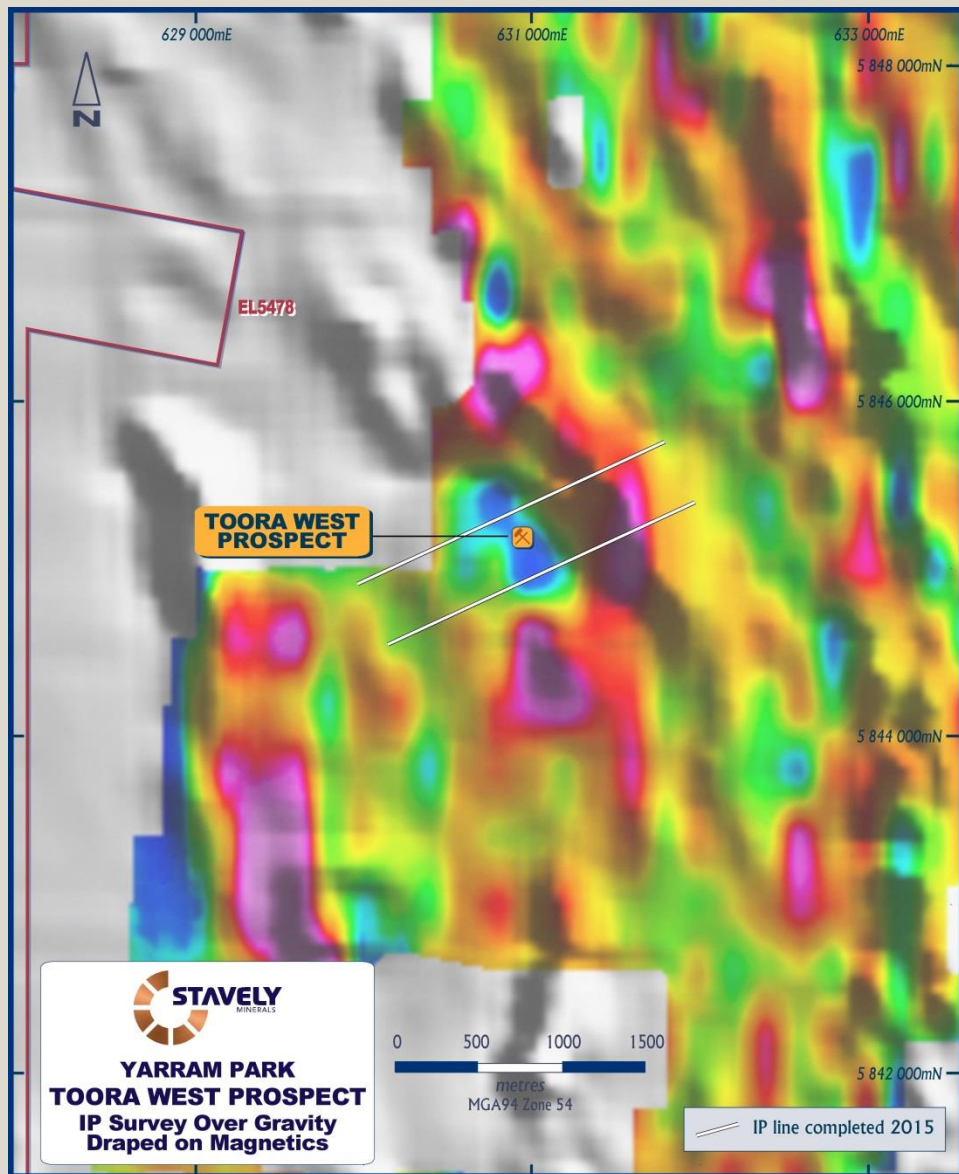
Mag high annulus and central high



Gravity low



# YARRAM PARK PROJECT



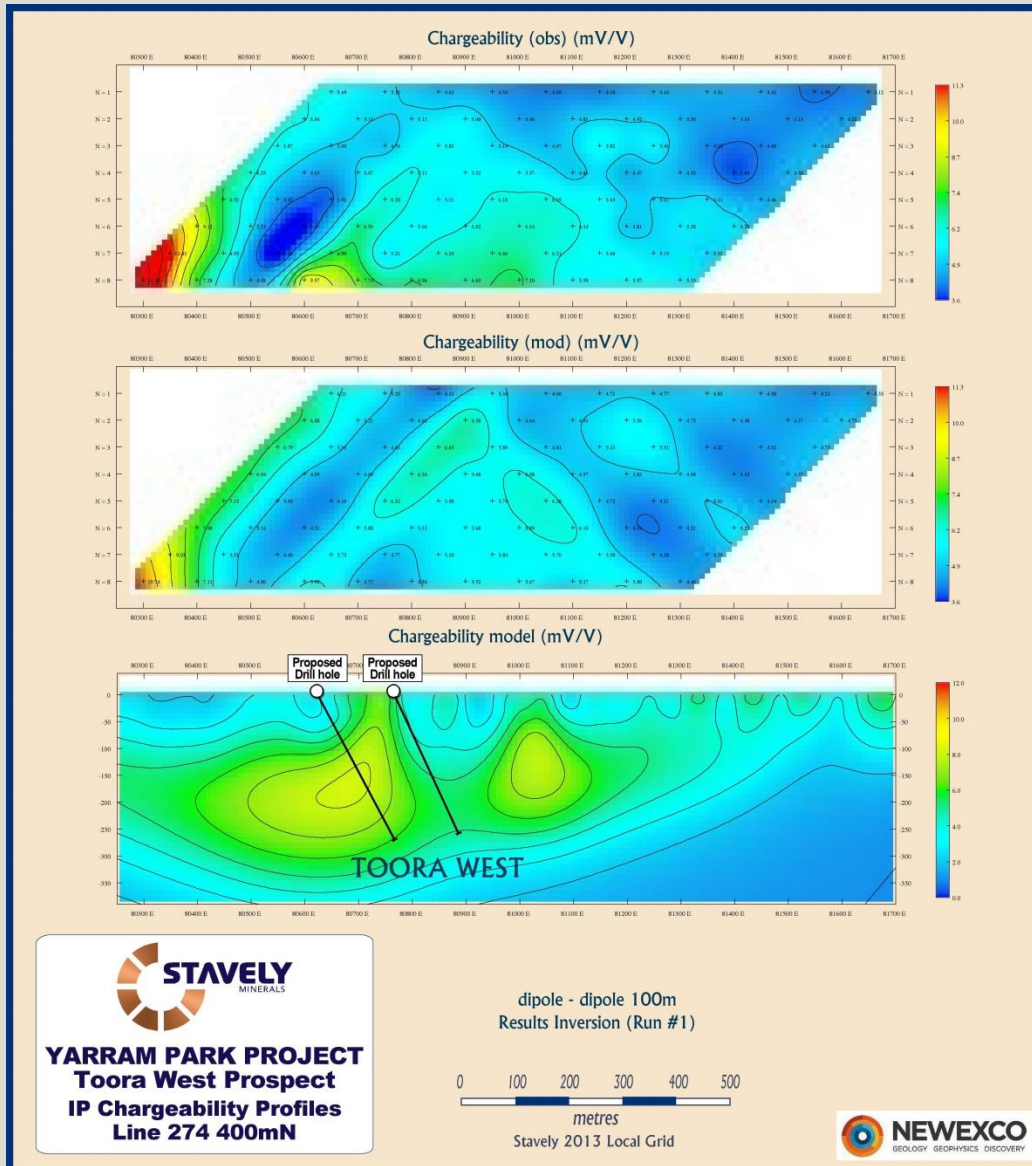
## Toora West prospect

- ✓ Mag high annulus and central high
- ✓ Gravity low

Two lines of IP completed



# YARRAM PARK PROJECT

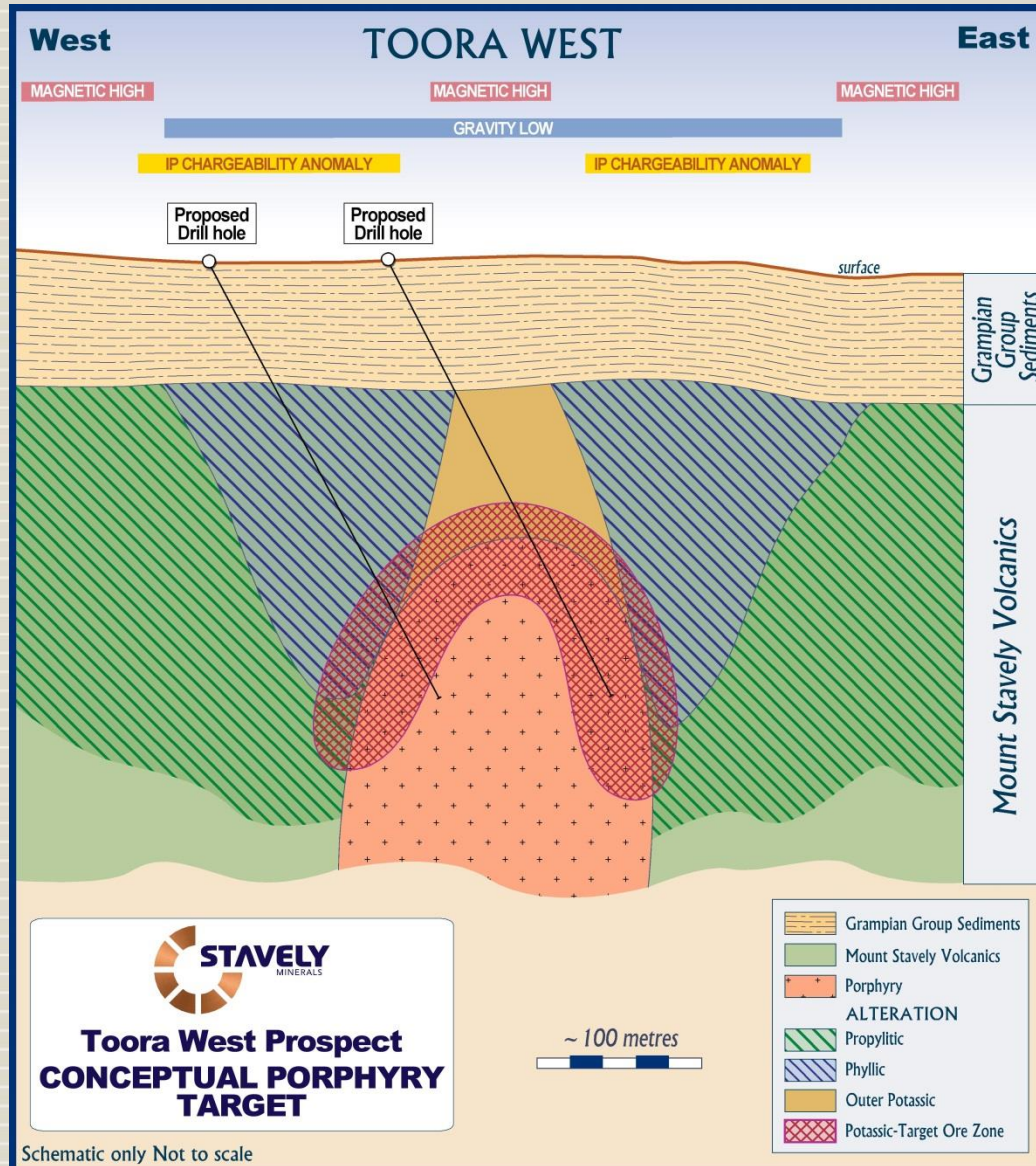


## Toora West prospect

- ✓ Mag high annulus and central high
- ✓ Gravity low
- ✓ Both IP lines have chargeability anomalies either side of the central magnetic high



# YARRAM PARK PROJECT



Schematic only Not to scale

## Toora West prospect

- ✓ Mag high annulus and central high
- ✓ Gravity low
- ✓ Both IP lines have chargeability anomalies either side of the central magnetic high
- ✓ **Victorian Government co-funding for an additional 3 lines of IP and 2 x diamond drill holes**
- ✓ **No previous drilling**

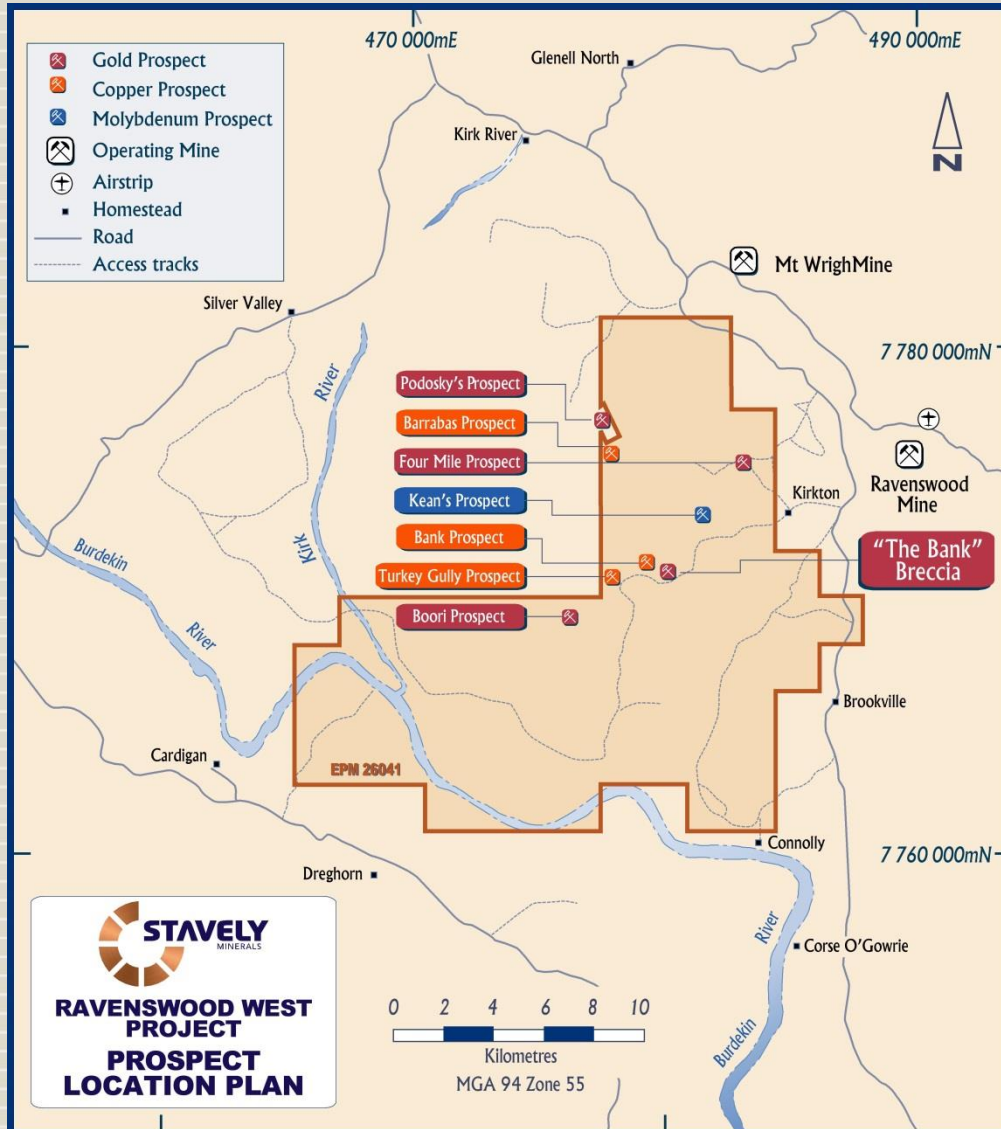


A decorative vertical bar runs down the left side of the slide. It is divided into two sections: the top section is a solid orange color, and the bottom section is a light beige color with thin, horizontal white lines.

# RAVENSWOOD PROJECT



# RAVENSWOOD PROJECT



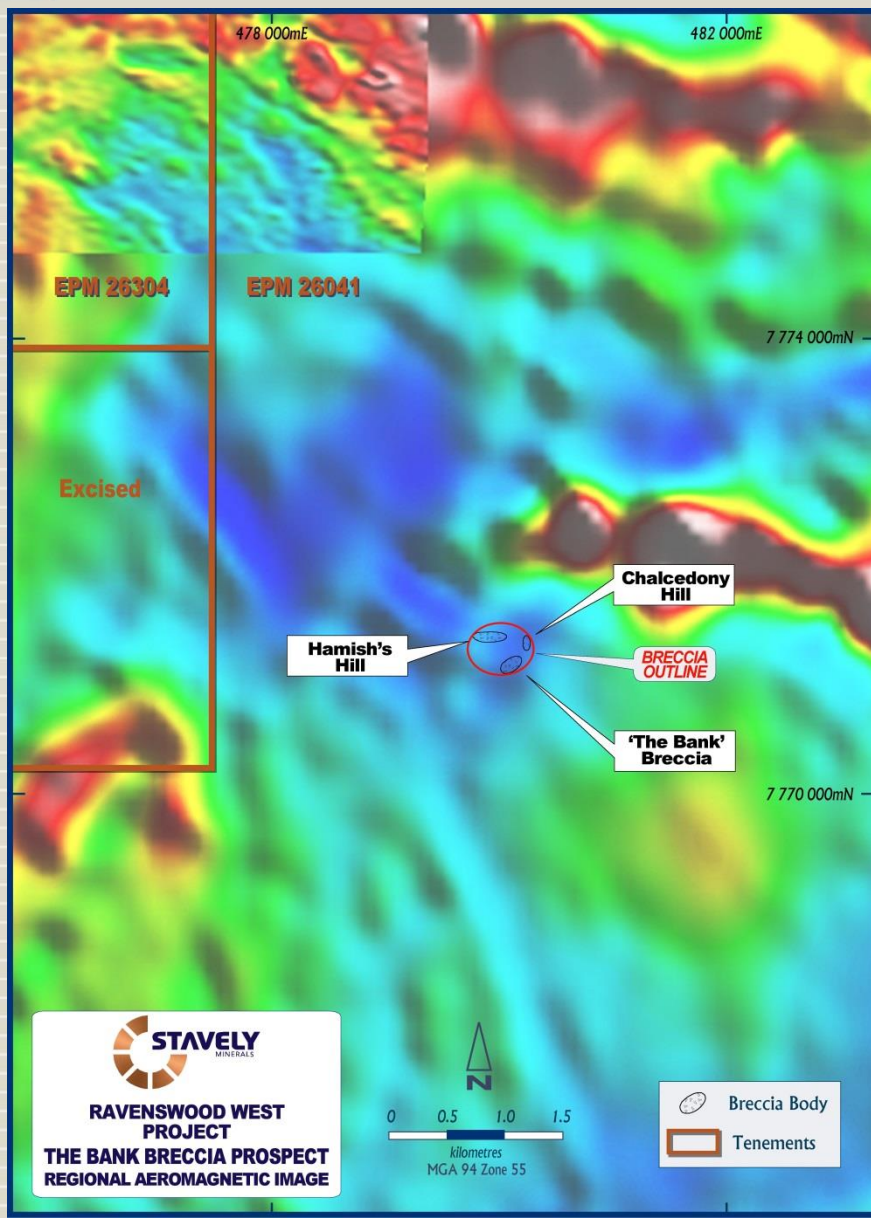
## Ravenswood Project

- ✓ Adjacent to the Ravenswood mining centre - ~4Moz produced
- ✓ 4 x porphyry copper / moly prospects
- ✓ 3 x mesothermal vein hosted gold prospects
- ✓ **'The Bank' breccia pipe**
  - Similar geochemistry to Mt Wright (1Moz) and Welcome (210koz) breccia pipes
  - **undrilled**



# RAVENSWOOD PROJECT

**STAVELY**  
MINERALS



## Ravenswood Project

Other notable IRGS gold deposits in north east Queensland include:

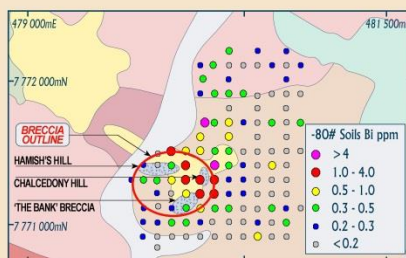
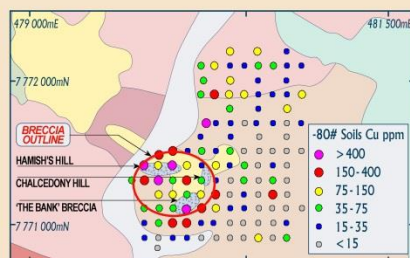
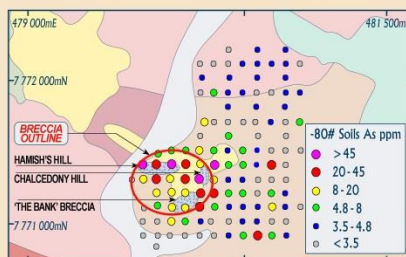
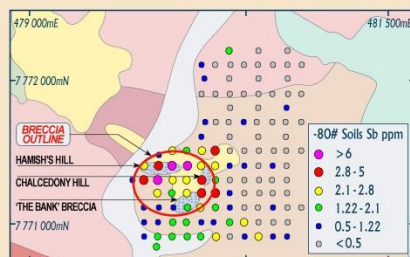
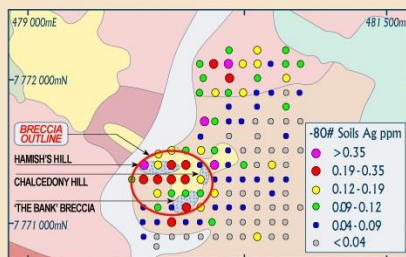
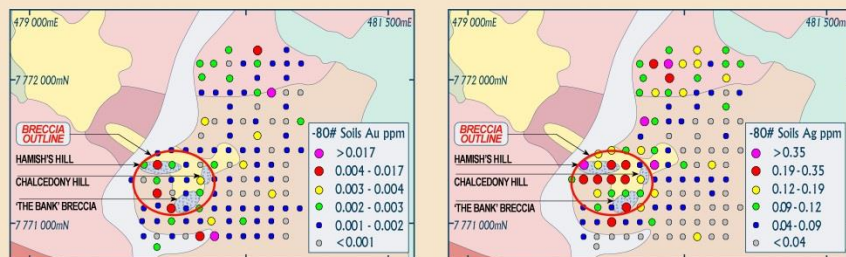
<u>Deposit</u>	<u>Contained oz</u>
Kidston*	5.0 million
Ravenswood	4.8 million
Mount Leyshon*	3.5 million
Red Dome	2.1 million
Mungana	1.1 million
Mount Wright*	1.0 million
Welcome*	0.21 million

\*=breccia hosted



# RAVENSWOOD PROJECT

**STAVELY**  
MINERALS

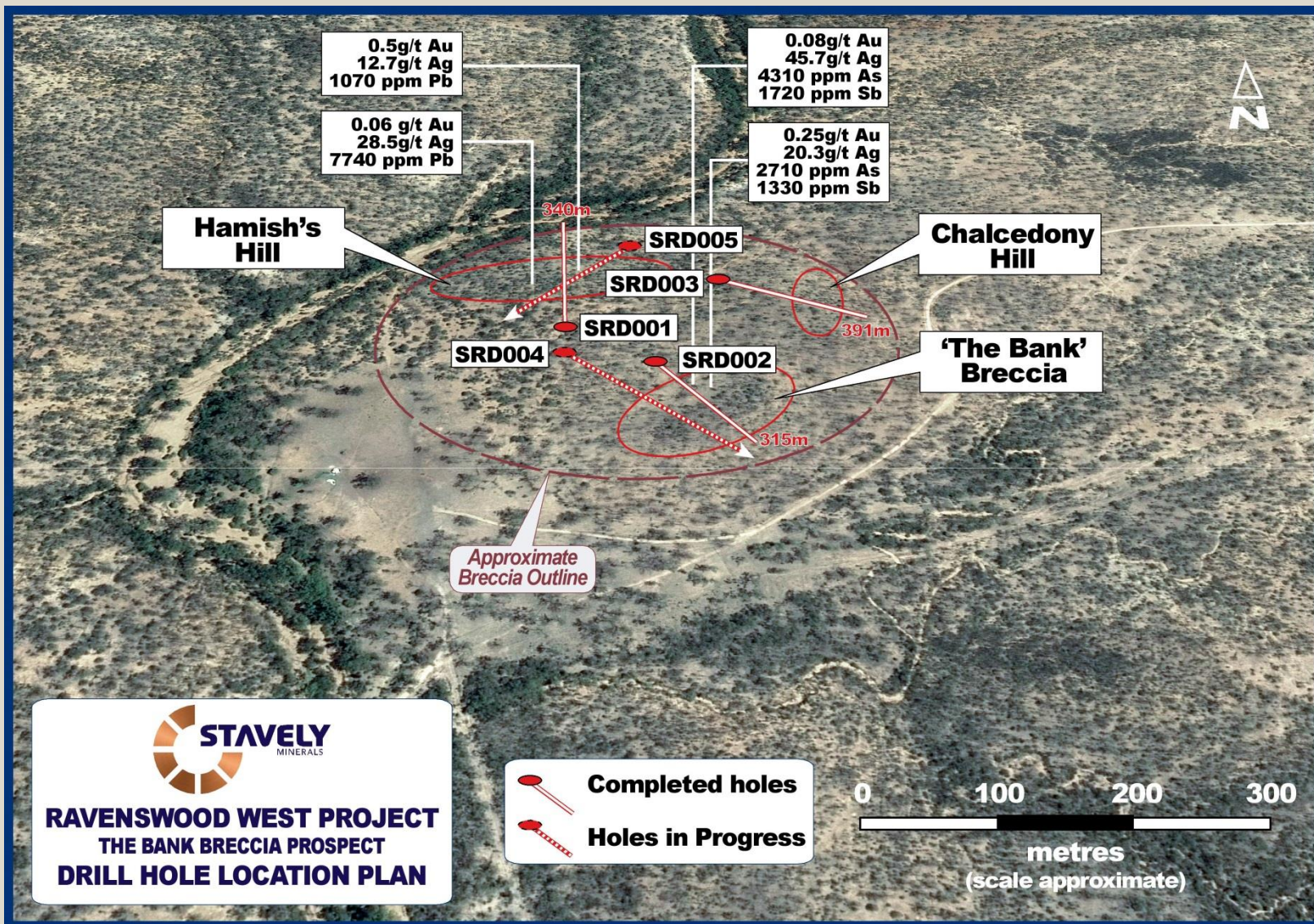


## The Bank breccia soil geochemistry

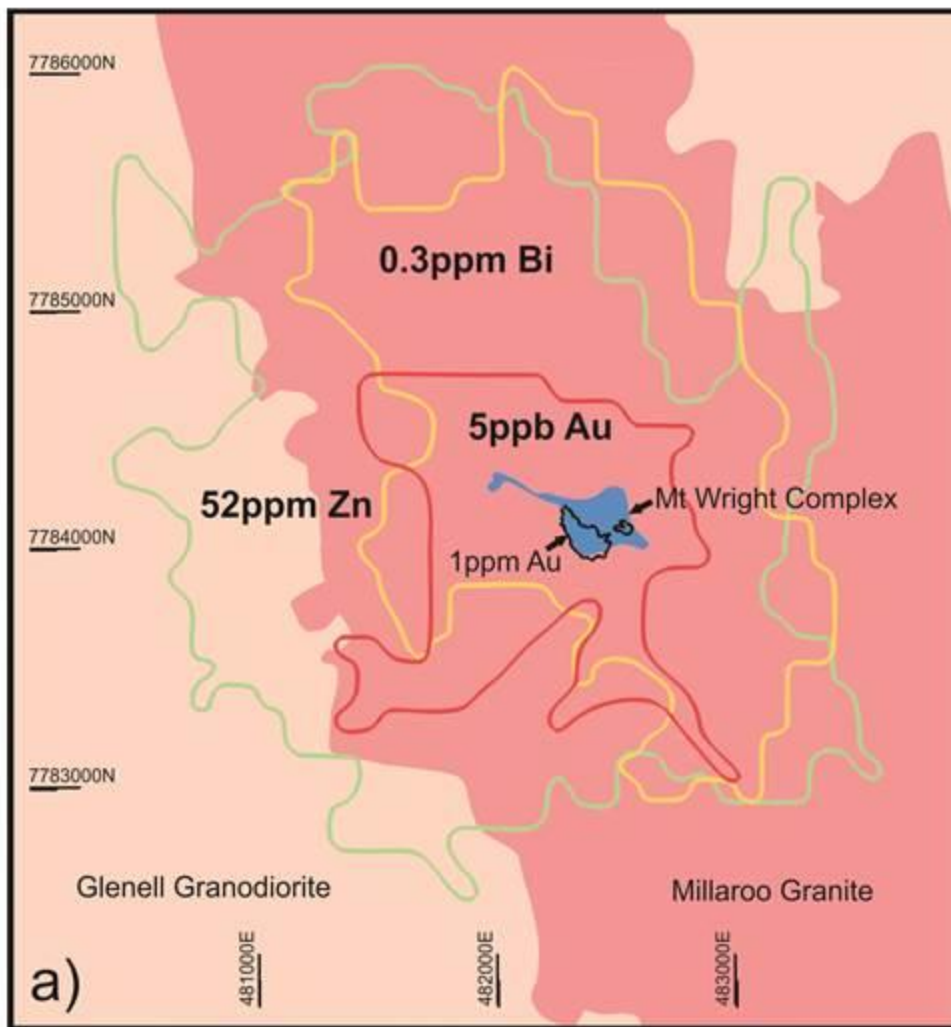
- ✓ Classic high-level geochemical zonation
- ✓ Proximal silver, arsenic, antimony, bismuth and copper with spotty gold
- ✓ Peripheral Pb, Zn and Thallium
- ✓ Likely the best developed gold mineralisation is at depth



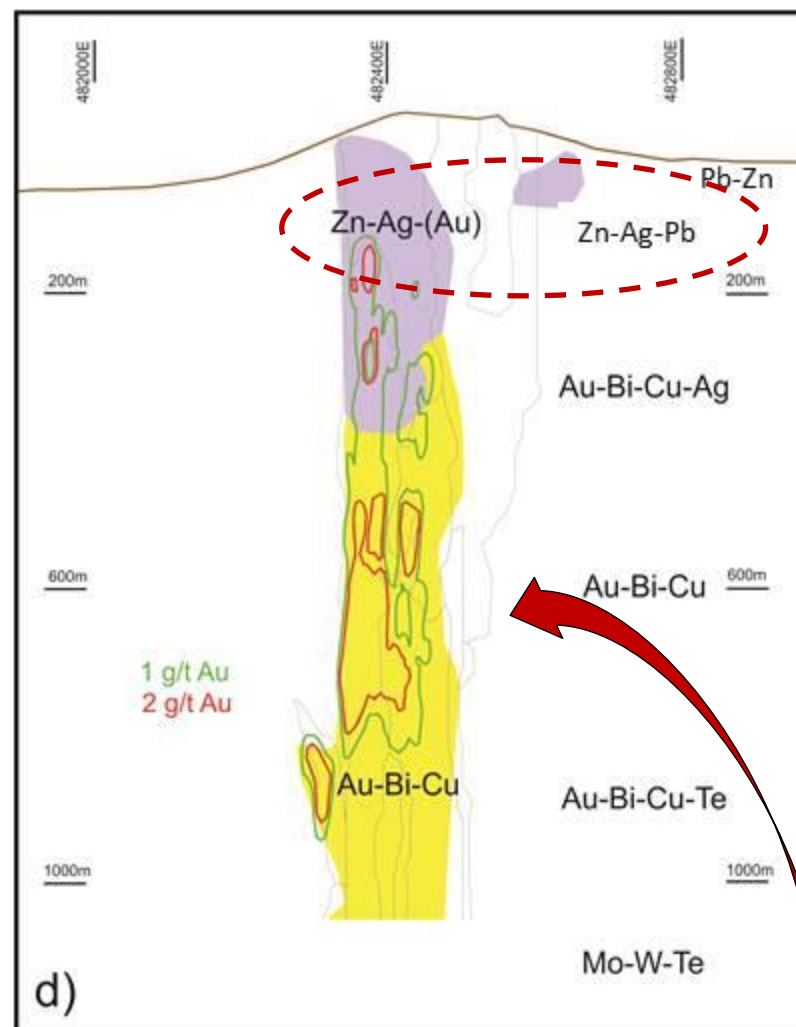
# RAVENSWOOD PROJECT







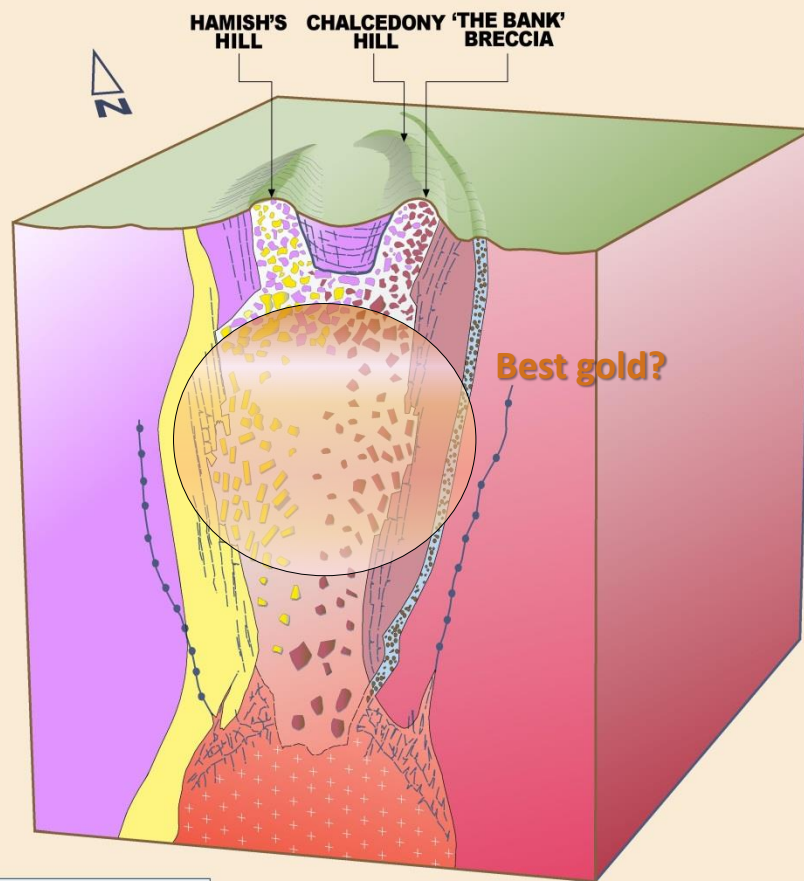
3km diameter soil anomaly Zn, Bi,  
Au only 5ppb on hill



1km tall system, well zoned  
Au 0.1ppm at surface,  
Best Au ore 500-800m below



# RAVENSWOOD PROJECT



	Sheeted quartz veins
	Mixed lithology Hydrothermal breccia
	Porphyry dyke
	Pebble dyke
	Porphyry
	Porphyritic Rhyolite
	Barrabas Adamellite
	Scoop Holes Granodiorite

0 500  
~ metres

scale approximate



## Ravenswood Project – 'The Bank' breccia

High-level of exposure:

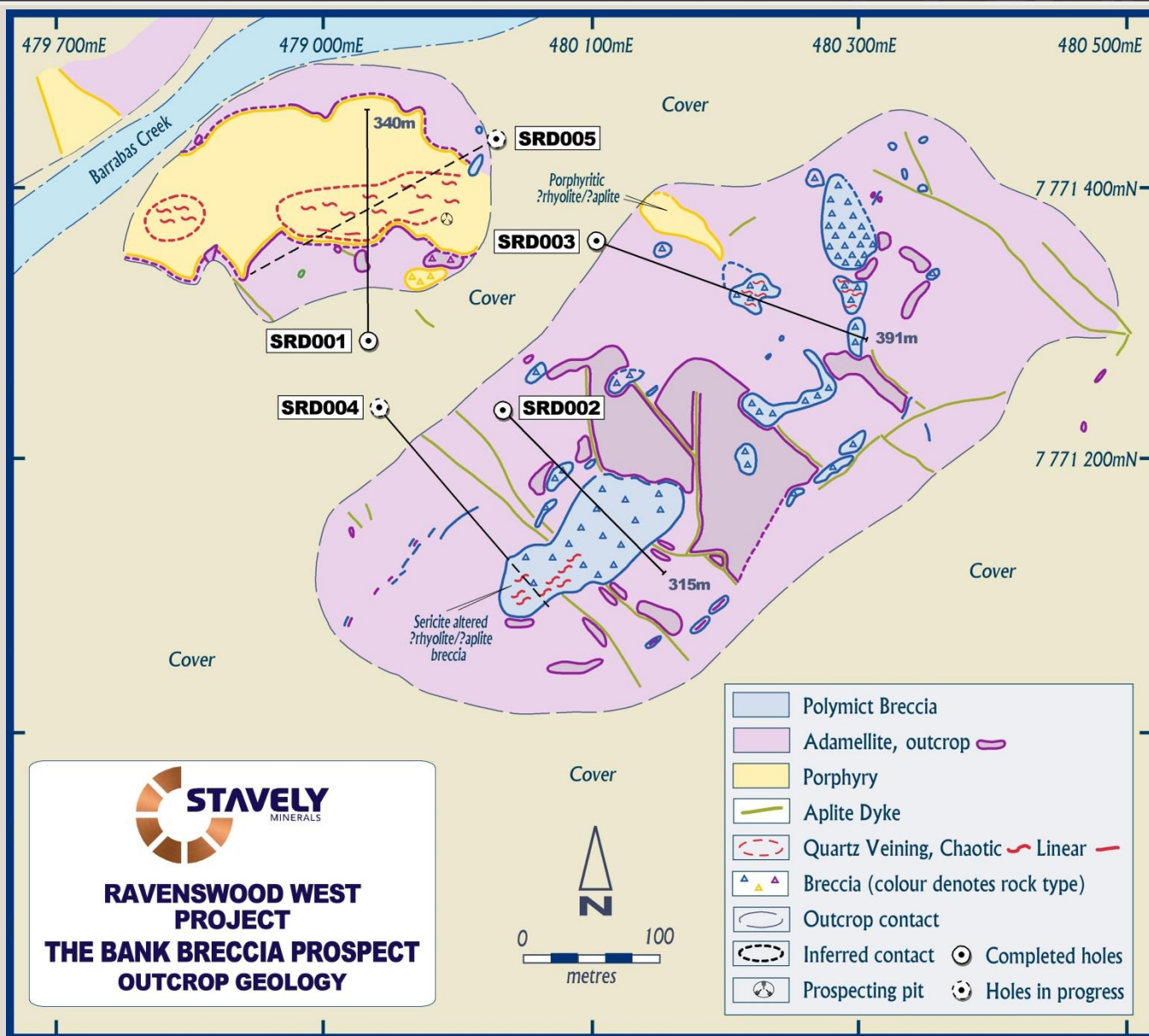
- ✓ Strong lead, silver, arsenic, antimony soil and rock-chip geochemistry
- ✓ Spotty gold but consistent with Mt Wright
- ✓ Magnetic low
- ✓ Rhyolite dykes and breccia clasts

Interpretation:

- ✓ **Best developed gold preserved at depth**



# RAVENSWOOD PROJECT

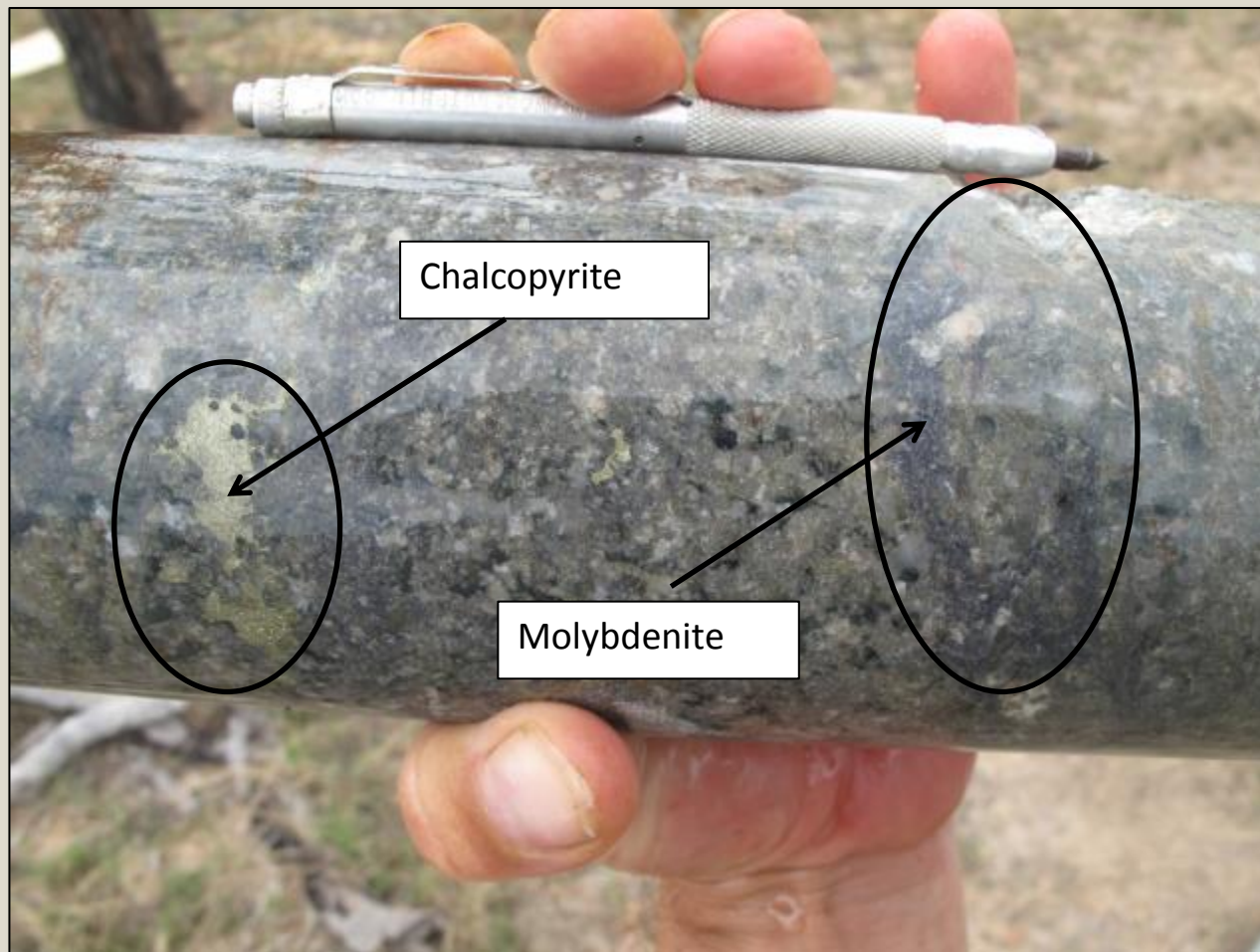




# RAVENSWOOD PROJECT – Drilling\*



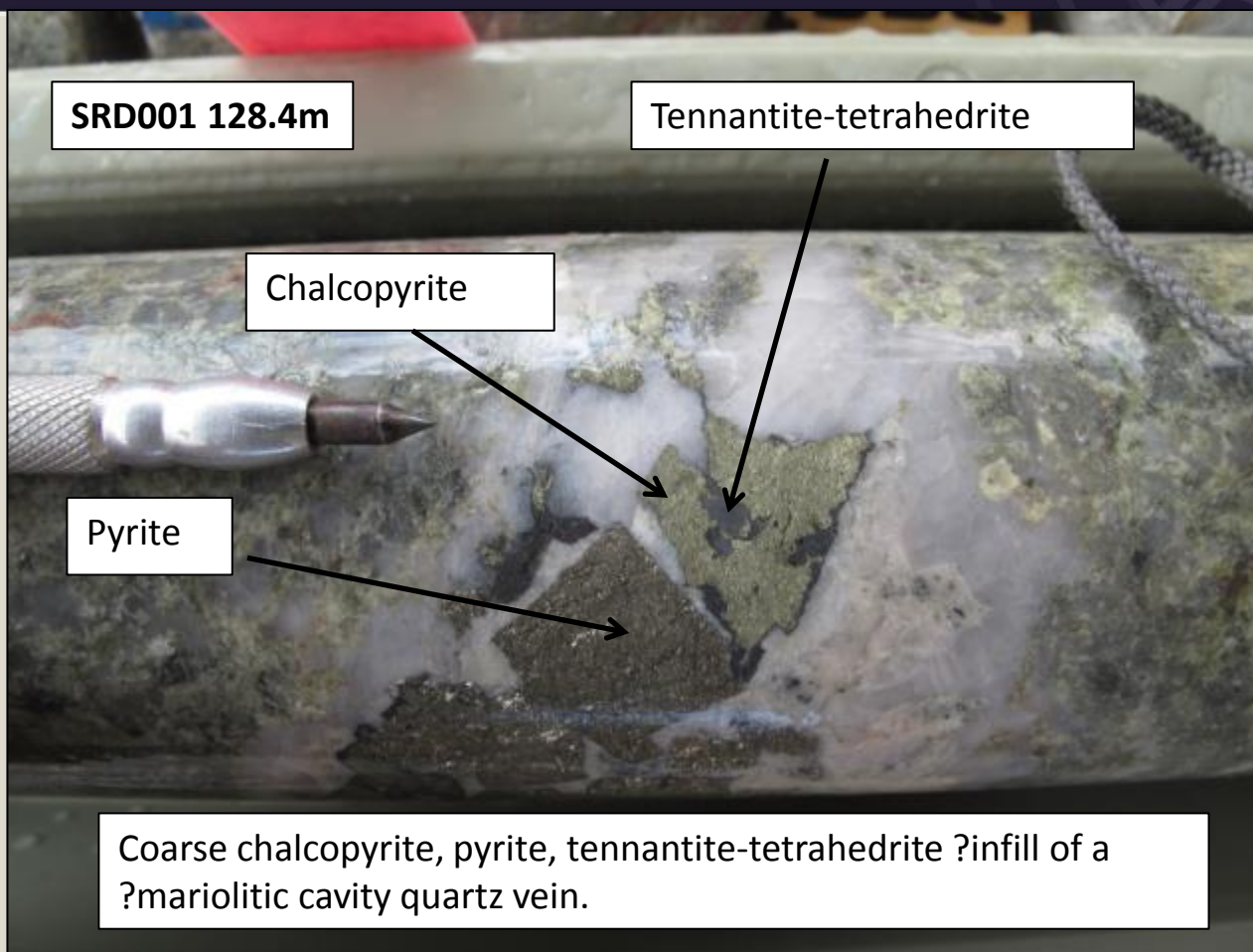
SRD001 38m



*\*See ASX announcement released 28 November 2016*



# RAVENSWOOD PROJECT - Drilling



Tennantite =  $\text{Cu}_{12}\text{As}_4\text{S}_{13}$  but with substitutions can be  $\text{Cu}_6[\text{Cu}_4(\text{Fe}, \text{Zn})_2]\text{As}_4\text{S}_{13}$

Tetrahedrite =  $(\text{Cu}, \text{Fe})_{12}\text{Sb}_4\text{S}_{13}$

Freibergite =  $(\text{Ag}, \text{Cu}, \text{Fe})_{12}(\text{Sb}, \text{As})_4\text{S}_{13}$

And solid solution series between the end members.....

...explains arsenic, antimony and silver soil anomalism





**SRD002 96.4m –  
145.9m**

**Altered / mineralised  
interval 107.4m – 140m**

**Adamellite (granite) is  
pink, early alteration is  
'red rock' hematite  
(iron), later alteration is  
grey (silica) and green  
(sericite)**

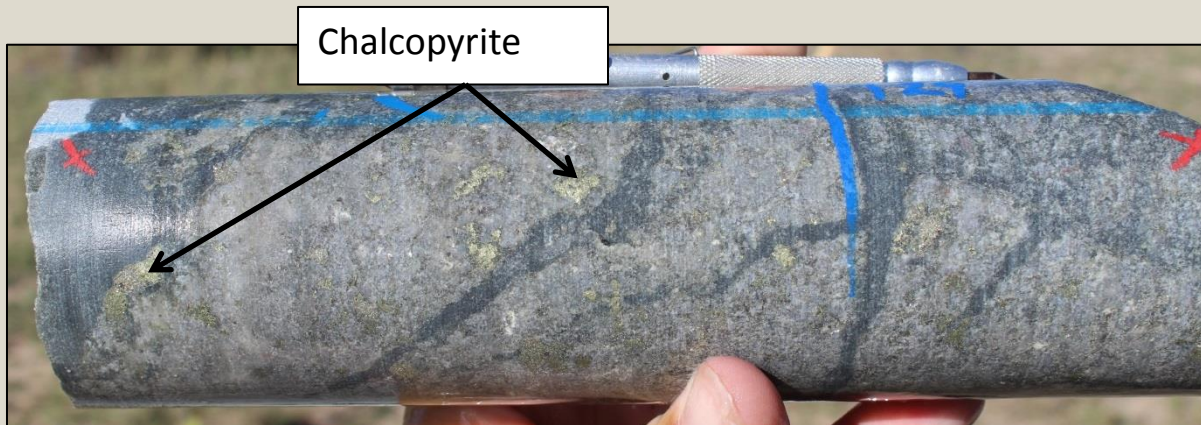




# RAVENSWOOD PROJECT - Drilling



**SRD002 125m angular breccia – silica, white sericite alteration, chalcopyrite mineralisation**



**SRD002 129m – crackle breccia - silica, white sericite alteration, chalcopyrite mineralisation**



# RAVENSWOOD PROJECT - Drilling



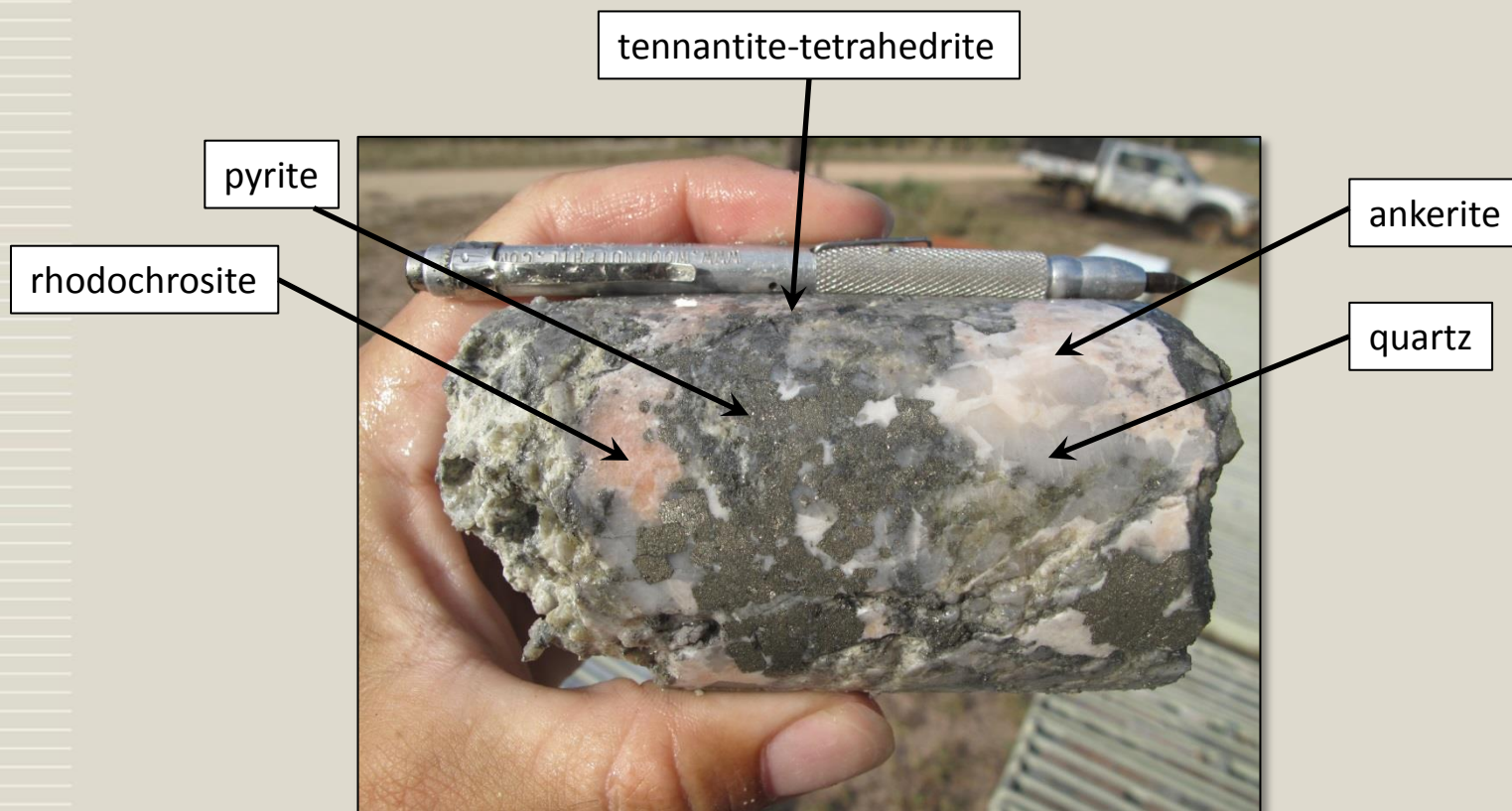
**SRD003 156m cryptocrystalline chalcedonic (low temperature) quartz vein**



**SRD003 219m-221m fault zone**



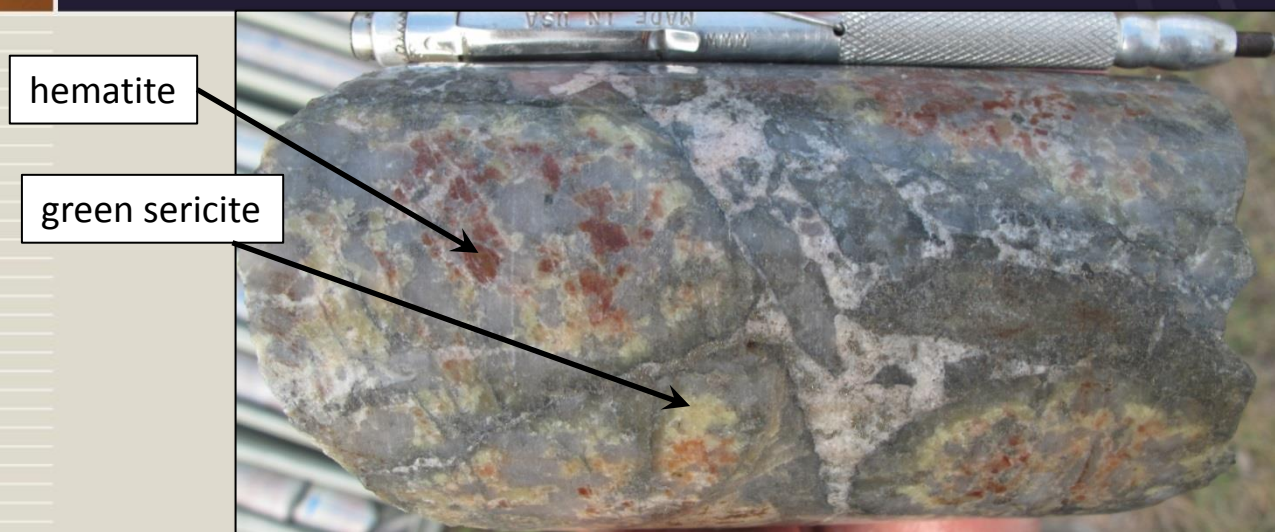
# RAVENSWOOD PROJECT - Drilling



**SRD003 220m – pyrite-quartz-rhodochrosite (Mn carbonate) ± tennantite- tetrahedrite**



# RAVENSWOOD PROJECT - Drilling



**SRD003 - Breccia with white and pink carbonate and pyrite infill at 222.5m. Clasts show early hematite (red rock) alteration, then brecciation, then quartz fill and green sericite altered clast rims.**



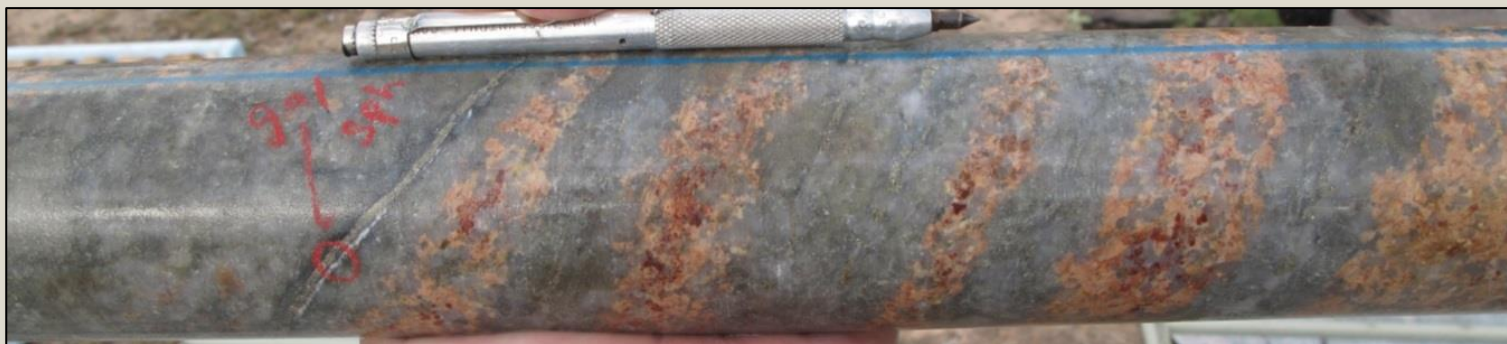
**SRD003 - Clasts of adamellite in a strongly chlorite-sericite altered matrix. Clasts display alteration rims. 224.5m**



# RAVENSWOOD PROJECT - Drilling

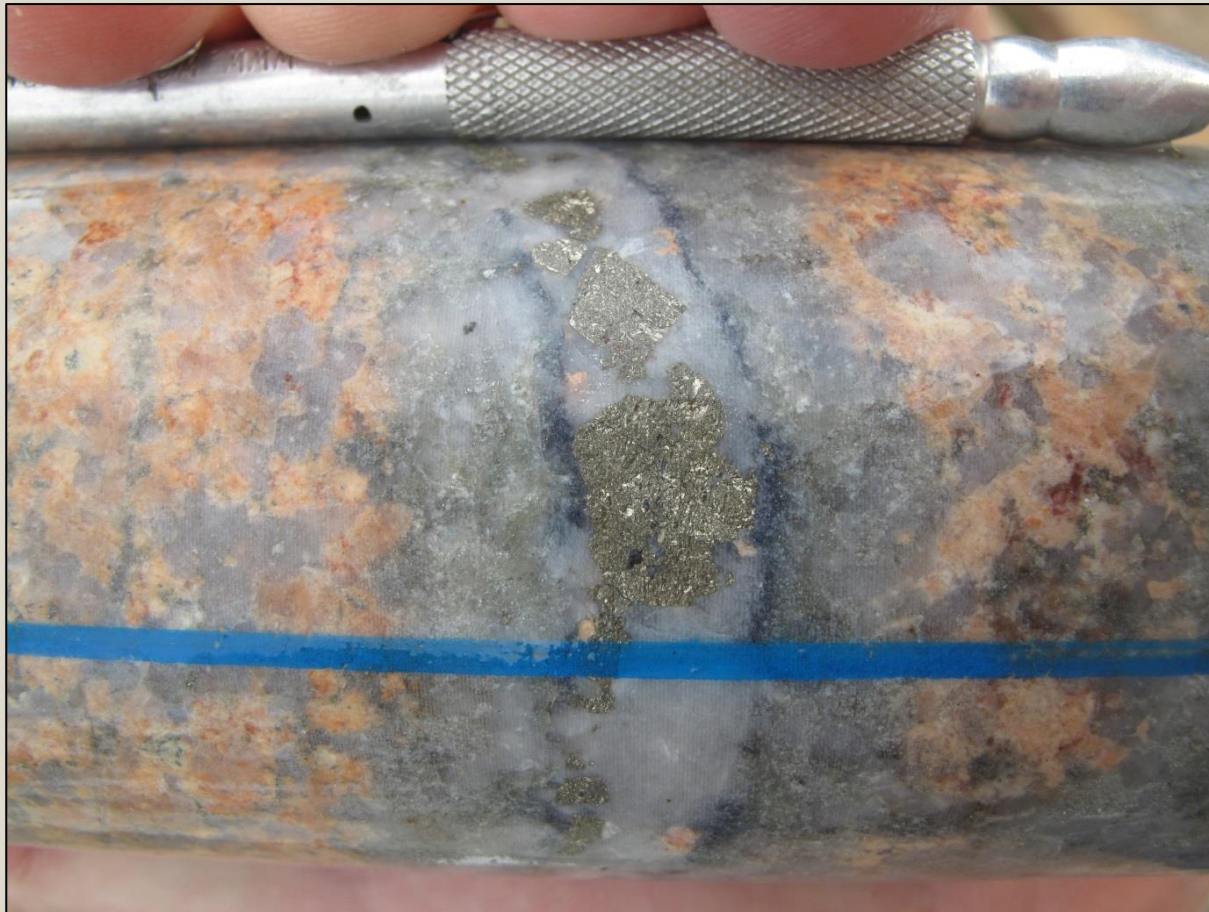


**SRD003 – sheeted veins from 240m to 310m. Dipping 70° to 270° (west).**



**SRD003 – close up of sheeted veins at 244.4m. Quartz veins with pyrite-galena-sphalerite-carbonate fill. Early red rock alteration overprinted by silica, white sericite.**





**SRD003 - Sheeted vein with quartz-pyrite-molybdenite and sericite alteration selvages**

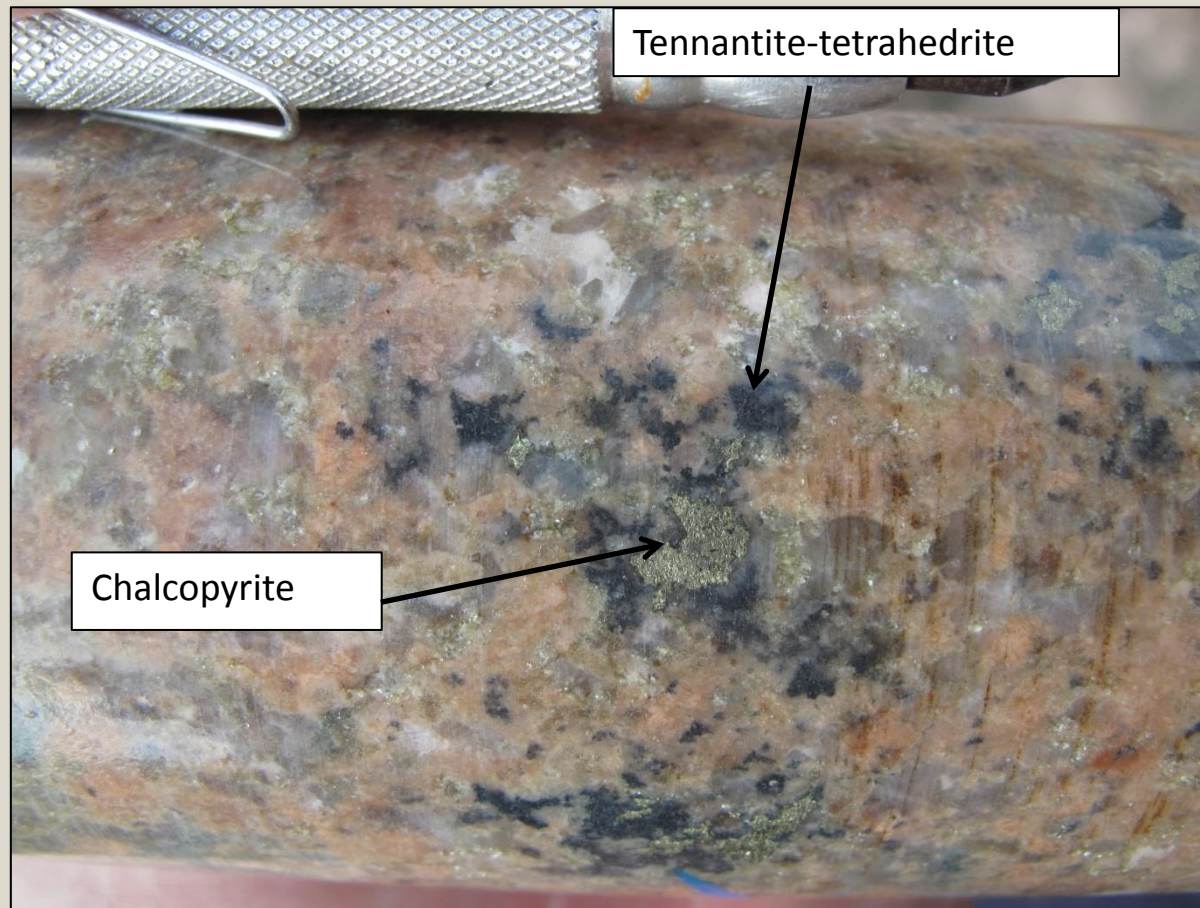


# RAVENSWOOD PROJECT - Drilling



**SRD003 - Pyrite-quartz-carbonate+-base metals vein at 250.5m**





**SRD003 – Chalcopyrite - tennantite-tetrahedrite at 316m**



A decorative vertical bar runs down the left side of the slide. It is divided into two sections: the top section is a solid orange color, and the bottom section is a light beige color with thin, horizontal white lines.

# WORK PROGRAMMES



## **Work programme for the Ravenswood Project**

- Regional soil geochemistry
- At 'The Bank' Breccia – drilling, current plan 4 x 300-400m diamond drill holes

## **Work programme for the Yarram Park Project**

- At Toora West - 3 x IP lines and 2 x 300m diamond drill holes

## **Work programme for the Stavely Project**

- At Thursday's Gossan - 2 x IP lines and 3 x 300m diamond drill holes
- At Mount Stavely – 1 x 300m diamond drill hole
- At Fairview Gold – 17 x 2km IP lines

## **Work programme for the Ararat Project**

Additional surface geochemistry and IP geophysics to identify additional base metal–gold mineralised horizons in advance of drilling

## **Work programme for the Thursday's Gossan Chalcocite 'Blanket'**

- Commence a Scoping Study on low-cost copper production

**Scoping Study on copper production and multiple significant discovery opportunities**



# STAVELY MINERALS

**STAVELY**  
MINERALS

ASX Code – SVY

Share Price - \$0.195

Cash (30/09/16) - \$1.06M\*

*\*Excludes Titeline Drilling agreement,*

*Victorian Gov't co-funding and recent capital raising*

Shares on Issue – 109M

Market Cap - \$21.3M

Management ~50% equity

## Directors

Bill Plyley

*Non-executive Chairman*

Chris Cairns

*Managing Director*

Jennifer Murphy

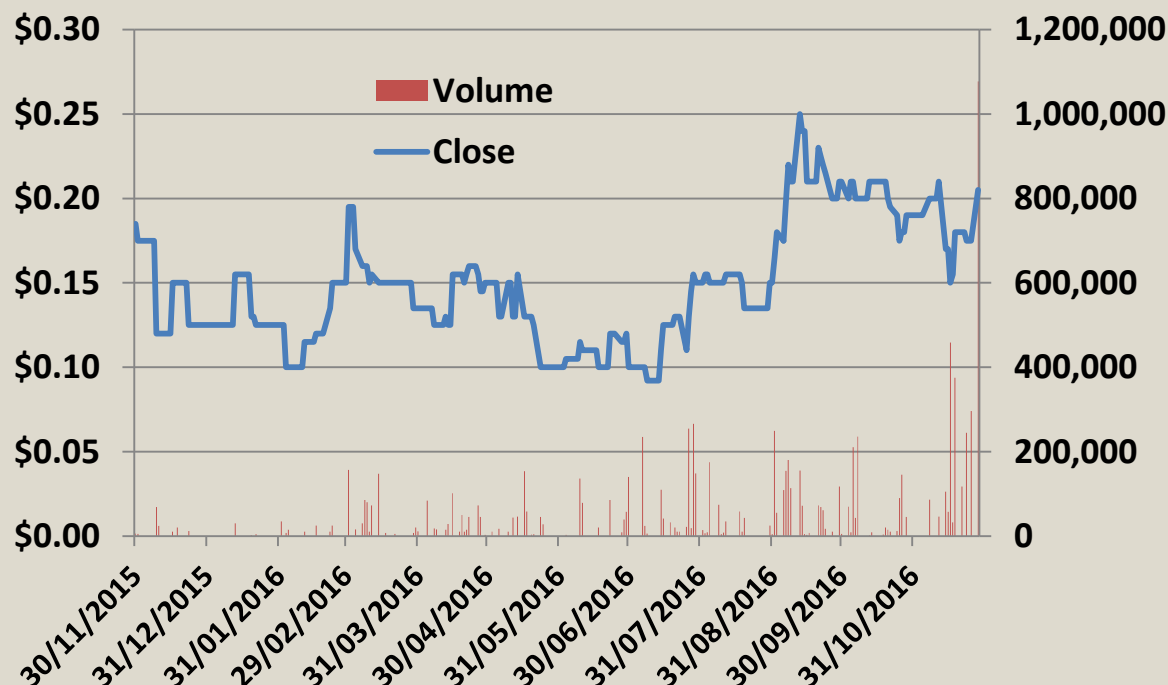
*Technical Director*

Peter Ironside

*Non-executive Director*

Amanda Sparks

*Company Secretary*



*\*\$2m share subscription agreement with Titeline Drilling Pty Ltd announced to the ASX on 7 October 2014*



## Thank You

Contact Us:

Stavely Minerals Limited

Level 1, 168 Stirling Highway

Nedlands WA 6009

[www.stavely.com.au](http://www.stavely.com.au)

[info@stavely.com.au](mailto:info@stavely.com.au)

Ph: 08 9287 7630

*The information in this presentation is extracted from information available to view on [www.stavely.com.au](http://www.stavely.com.au). The company confirms that it is not aware of any new information or data that materially affects the information included in the original market announcement and, in the case of estimates of Mineral Resources or Ore Reserves, that all material assumptions and technical parameters underpinning the estimates in the relevant market announcement continue to apply and have not materially changed. The company confirms that the form and context in which the Competent Person's findings are presented have not been materially modified from the original market announcement.*