



# Buddy



# ASX

## ASX MARKET RELEASE

### Results of Annual General Meeting

Buddy Platform Limited ("Company") ([BUD.ASX](http://BUD.ASX)) hereby announces the following information regarding the results of the Annual General Meeting of the Company held today and is provided in accordance with Listing Rule 3.13.2 and section 251AA(2) of the Corporations Act.

The Chair directed all undirected proxies in favor of all resolutions. All Resolutions were passed on a unanimous show of hands. Proxy results for the Meeting are set out below:

| Res |   | For         | Against   | Abstain   | Chairman's Discretion |
|-----|---|-------------|-----------|-----------|-----------------------|
| 1.  | Adoption of remuneration report   | 28,086,174  | 5,830,721 | 3,850,780 | 3,720,988             |
| 2.  | Re-election of Director - Mr. Ananda Kathiravelu                            | 156,882,122 | 9,065,884 | 624,321   | 3,452,607             |
| 3.  | Election of Director - Mr. John van Ruth                                    | 165,568,270 | 133,142   | 409,511   | 3,914,011             |
| 4.  | Approval of 10% Placement Capacity  | 162,897,582 | 2,586,915 | 623,926   | 3,916,511             |
| 5.  | Approval to issue performance shares to a related party - Mr. John van Ruth | 150,752,579 | 8,127,970 | 7,342,563 | 3,801,822             |
| 6.  | Approval of prior issue   | 164,377,194 | 1,395,149 | 234,746   | 4,017,845             |

For and on behalf of Buddy Platform Limited,

Stuart Usher  
Company Secretary

#### About Buddy

Buddy Platform Limited ([BUD.ASX](http://BUD.ASX)) provides one of the world's first data aggregation and management platforms for the IoT and connected devices. Buddy advances The Quantified Economy™ by providing the critical infrastructure by which businesses and organizations can, in real-time, access and analyze the data generated by connected devices, and unlock the economic opportunities delivered by this data. Buddy Platform users represent a wide variety of industries, including airlines, agriculture, automotive, consumer electronics, robotics, software development, telecommunications, and transportation. Buddy is headquartered in Seattle, Washington, with offices in Adelaide, Australia. For more information, visit <http://www.buddy.com>.

###

Buddy Platform Contact:  
Brian Seitz, VP of Marketing and Communications  
Phone: +1 (206) 745-9079  
Email: [brian@buddy.com](mailto:brian@buddy.com)





# Buddy Platform Overview

## Annual General Meeting 2016

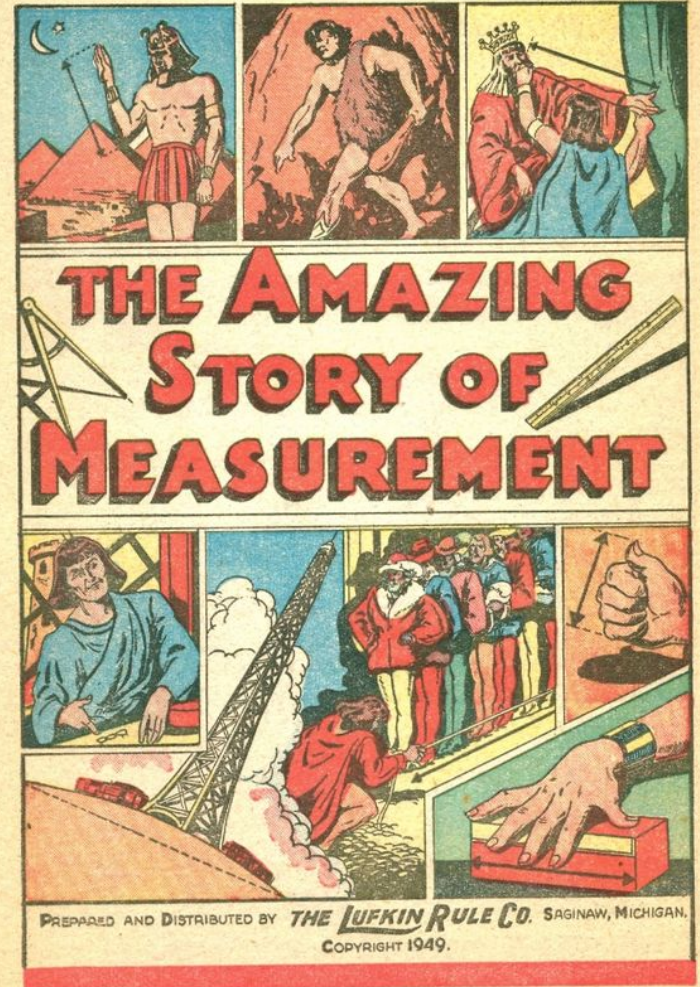
---

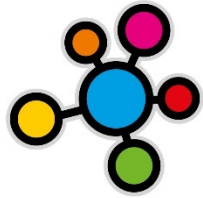
For all recorded time, humans have sought to understand their surroundings.

Without measurement there can be no understanding.

The “Internet of Things” is the greatest technology advancement in measurement the world has ever seen.

The IoT means literally everything on the planet can be measured, remotely, by Internet-connected sensors.

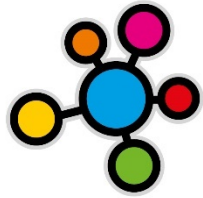




# Buddy

We believe that every organization should be able to fully understand its' customers, products and systems.

We believe that the mechanisms to achieve this are out of reach for most organizations today.



# Buddy

Buddy makes measurement of customers, products and systems possible for any organization on Earth.

We do this by providing an Internet of Things software platform that brings connectivity, measurement and data processing to any customer, product or system.



50-200 billion connected things by  
2020.

That's 50+ petabytes of data  
generated per day.

Buddy provides the solution(s) for  
measuring and understanding the  
data generated by these things.

# Buddy Value Proposition



Connected  
Cities



Mining



Wearables



Manufacturing



Connected  
Vehicles



Health &  
Safety



Energy &  
Resources



Connected  
Homes

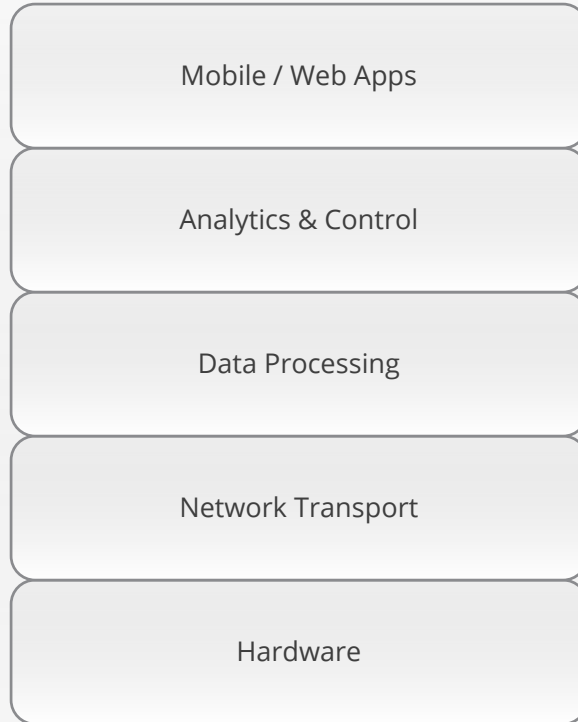
Buddy clients often approach us with a challenge without a clear vision of the fix.

We deliver an end to end solution that includes custom hardware design; data hosting and processing; device management and control; and information analysis and visualization.

Buddy's IoT solution allows customers to get to market quickly and focus on their core value proposition.

Buddy offers time to market advantages, and the ability to deliver a "solution".

# Typical IoT Stack



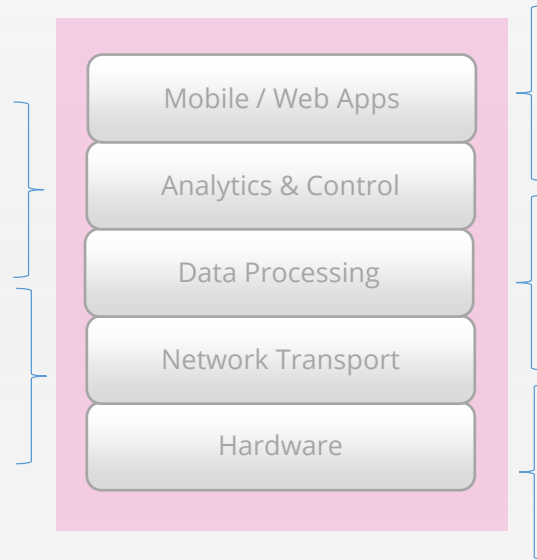


# Integrated IoT Solution Delivered by Buddy

Vision development  
Project management  
Technical consulting

Customizable dashboards  
Logic-based alerting, alarming  
and control

Flexible protocols  
2-Way device communication



Buddy Parse MBaaS  
iOS, Android, Javascript SDKs  
iOS, Android, and web app dev

Fast  
Secure  
Stable  
Private

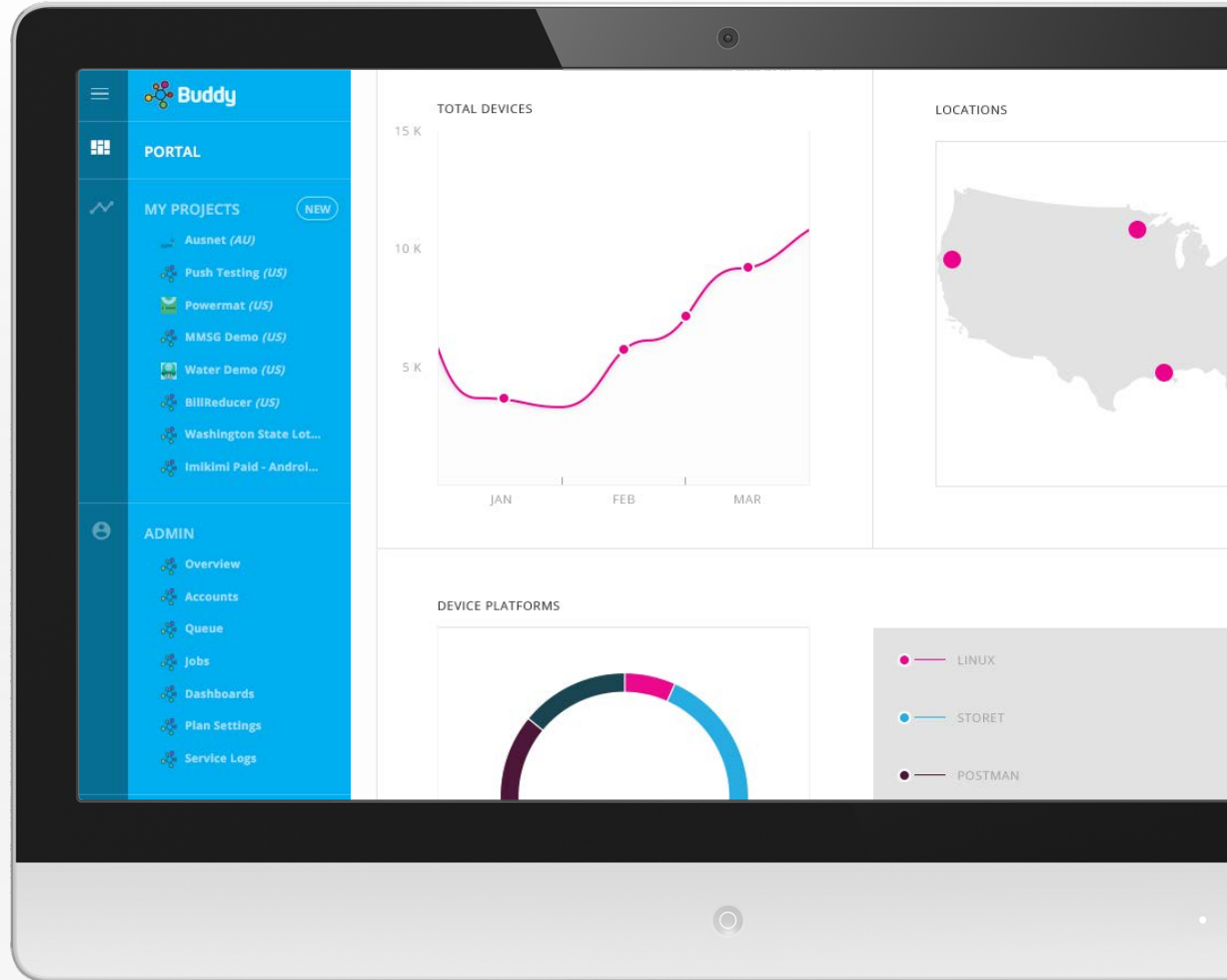
Design  
Operating System  
Device Management  
Magical OOB

# Buddy Portal

Self-service focus

Intuitive

Contextual support





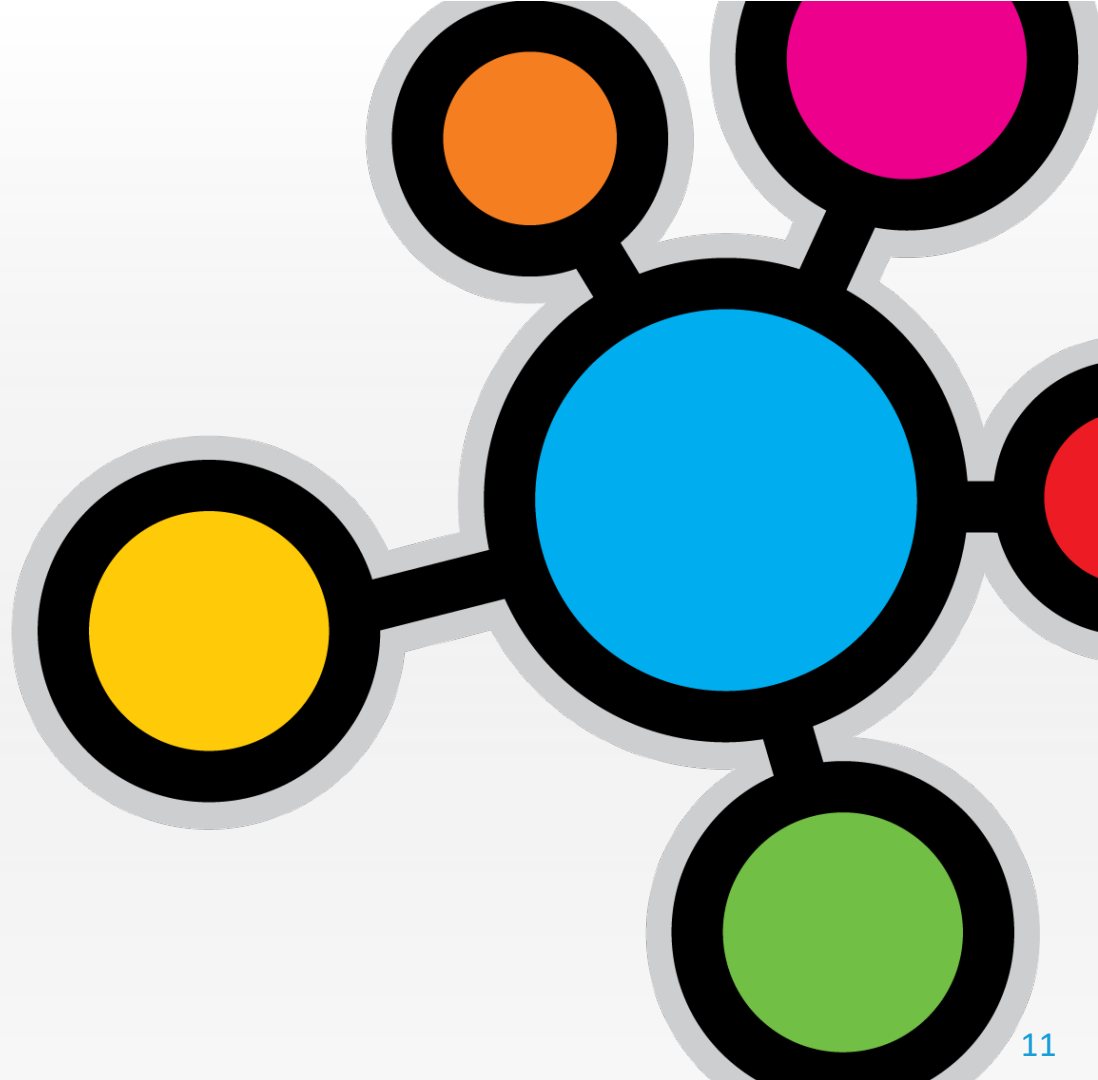
# Analytics and Monitoring

Real-time dashboards for prototyping and troubleshooting specific devices

Custom built dashboards for more advanced data analytics

Real-time streaming or batch transfer capability to client BI systems.

# Parse on Buddy





---

# Noveda – Proposed Acquisition & Use Cases

# Smart City

## USE CASE

Buddy increases community health and safety, improves traffic flow, and dramatically reduces overall cost of municipal management through the use of innovative, low cost internet-connected sensors and control devices.





# Utilities

## USE CASE

Buddy enables next generation energy and water utilities to operate more efficiently and, by extension, reduce resource consumption and increase operating profit. Real-time sensor based monitoring allows utilities to quickly identify and correct sub optimal performance.

Advanced logic and threshold-based alerting calls attention to problems before they happen, and two-way communication allows operators to remotely control equipment, saving human resources and improving response times.

# Energy Monitoring and Management

## USE CASE

Buddy enables building owners to maximize resource efficiency resulting in higher operating income, lower carbon footprint, and increased productivity for building occupants.

These buildings are optimized using energy and water management processes with high data visibility leading to reduced energy and water spending.

Buddy smart building engagements typically return significant ROI within twelve months.







---

## Buddy Case Studies

CASE STUDY

# Global Electrical Company

The customer seeks to facilitate real-time notifications when “Ground Fault Circuit Interruption” circuit breakers trigger.

Such notifications can mean that hospitals no longer need orderly staff to monitor for circuit breaker triggers on life-supporting equipment.

Organization in question is superb at building plastics/metal based product. Looking to our expertise for the final technology pieces, and ultimately the overall project.





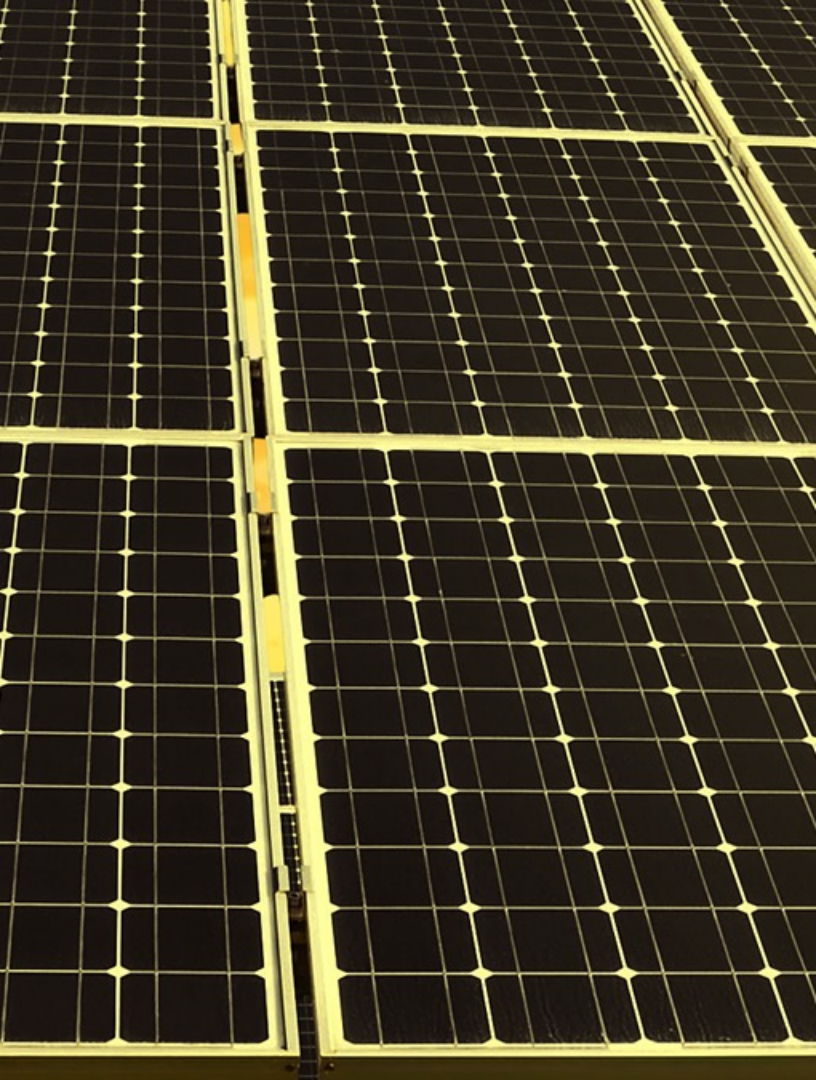
## CASE STUDY

# Recreational Vehicle Manufacturer

A provider of high-end travel trailers and caravans – wants to offer a ‘smart trailer’ experience to its customers, integrating on-board systems with an IoT enterprise platform and smartphone and tablet apps.

Buddy is developing a fully end-to-end solution delivered using our professional services wrapper.

The solution involves mobile and web apps, custom hardware that can be updated OTA, all powered by the Buddy Platform.



## CASE STUDY

# Liberty Science Center

Liberty Science Center (LSC) is a 295,000 square foot museum that services over 1 million guests a year. In April 2008, LSC installed EnergyFlow Monitor™ and SunFlow Monitor™, to track energy use and to monitor the performance of the facility's solar photovoltaic system.

Through immediate insight and operational adjustments, daily electrical consumption was reduced by approximately 11%. The museum reduced its energy usage by more than 40% in under a year. The energy savings resulted in a 40% reduction in CO2 emissions.

**The payback on the investment was less than three months.**



# IoT World Europe 2016

[\(here\)](#)



**Buddy**

Connecting the World's  
IoT Devices and Systems  
Buddy.com



**Buddy**



**Buddy**



LiveRun

Performance

E Hub

Carbon

Data Hub

DHub Range

Meters

Channelyzor

CXI Range

## Avoided Greenhouse Gas Emissions

This Month

CO<sub>2</sub> **33,766 lbs**

NO<sub>x</sub> **62 lbs**

SO<sub>2</sub> **93 lbs**

# STAPLES

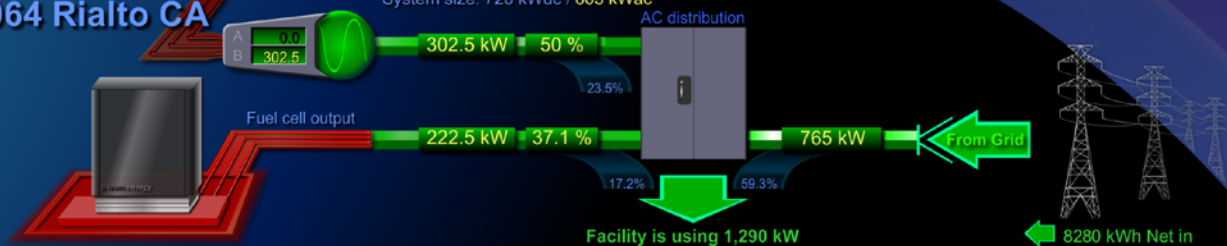
that was easy.

## Staples DC 4964 Rialto CA

06/09/2016 11:37:00 am  
Temp: 73°

Sunrise: 5:37:25 am  
Sunset: 8:00:37 pm

System size: 720 kWdc / 603 kWac



**NOVEDA**  
TECHNOLOGIES  
v20120917 0.0023 exeSecs M

Today

Solar array has generated: 836.8 kWh  
Fuel cell has generated: 2,671.2 kWh

Facility has consumed  
11,788 kWh

Imported < 8,280 kWh  
Exported > 0 kWh



LiveScan

Performance

E-Hub

Carbon

Data Hub

Display Range

Meters

Channelizer

CXL Range

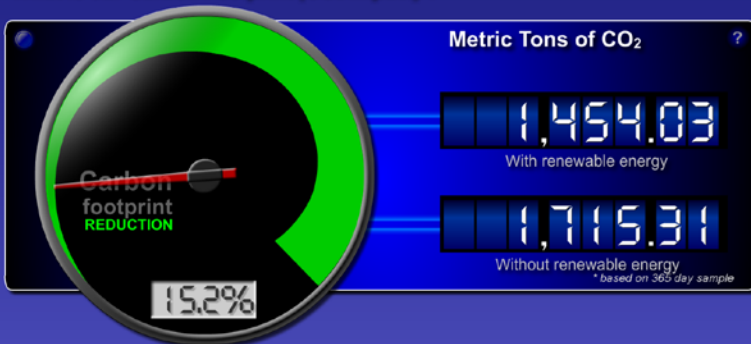
# Solar Performance Cluster

## Staples DC 4964 Rialto CA

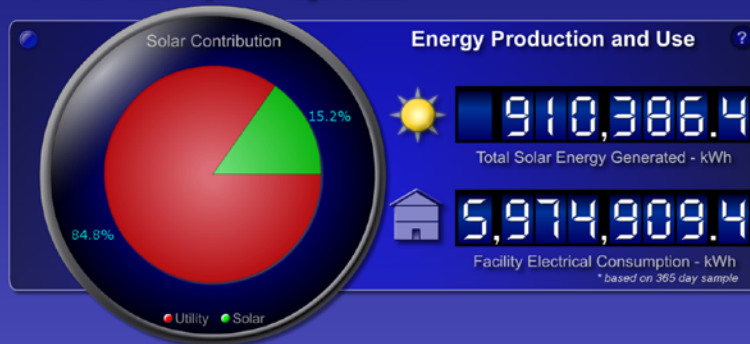
06/09/2016 11:46:00 am

Today Month Year 365 days

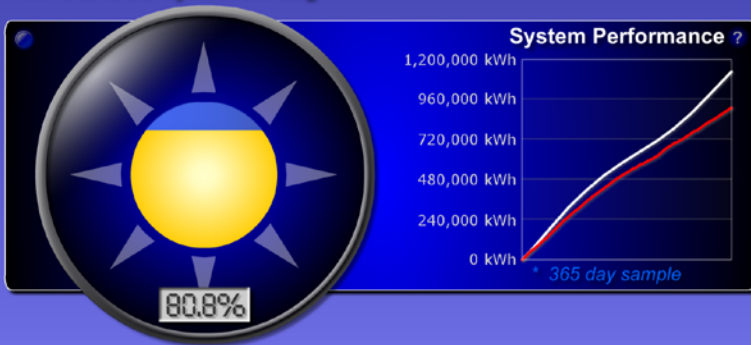
### What is our Carbon Footprint (CO<sub>2</sub> impact) ?



### How much electricity have we generated?



### How well is our system working?



### How many homes could we power?



- LiveScan
- Performance
- E Hub**
- Carbon
- Data Hub
- Display Range
- Meters
- ChillerAnalyzer
- CX: Range

NOVEDA ENERGYFLOW

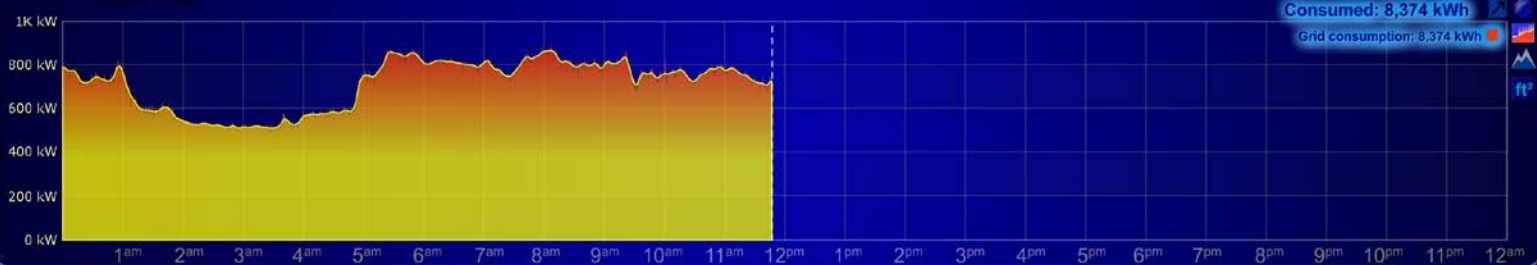
1928110  
1368175

STAPLES

Staples DC 4964 Rialto CA

06/09/2016 11:46:00 am

Grid Solar Composite Btu



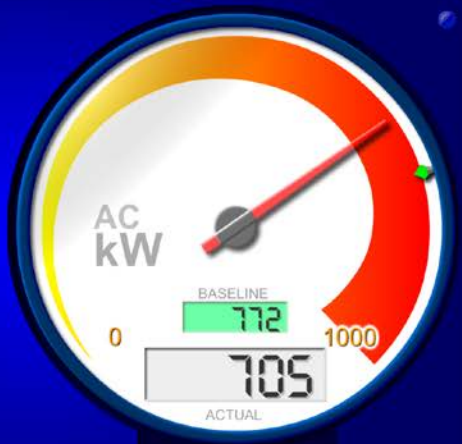
Consumed: 8,374 kWh  
Grid consumption: 8,374 kWh

kW +peak/avg kWh/ft<sup>2</sup> Cost ft<sup>2</sup>

BUDGET BASELINE UTILITY Today Month Year 365 days

### AC power in kiloWatts

How much electrical power are we using right now?



Grid kW avg/min

### Electrical Performance Index

How's my overall electrical energy consumption?



Performance Index

LiveScan

Performance

E-Hub

Carbon

Data Hub

Display Range

Meters

Channelizer

CXL Range

Based on current and historical Electrical Consumption....

**What is this facility's CARBON footprint and ENERGY footprint?**

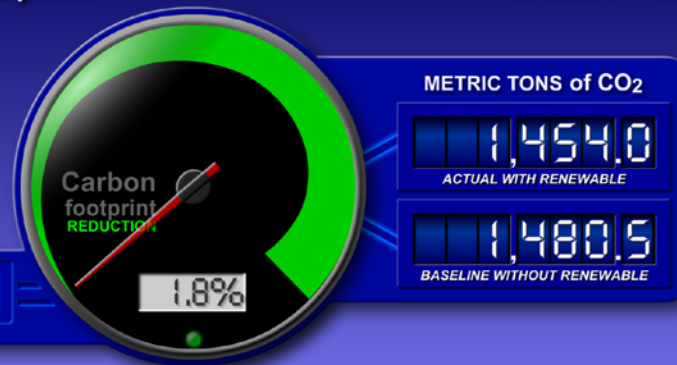
Staples DC 4964 Rialto CA

06/09/2016 11:48:00 am

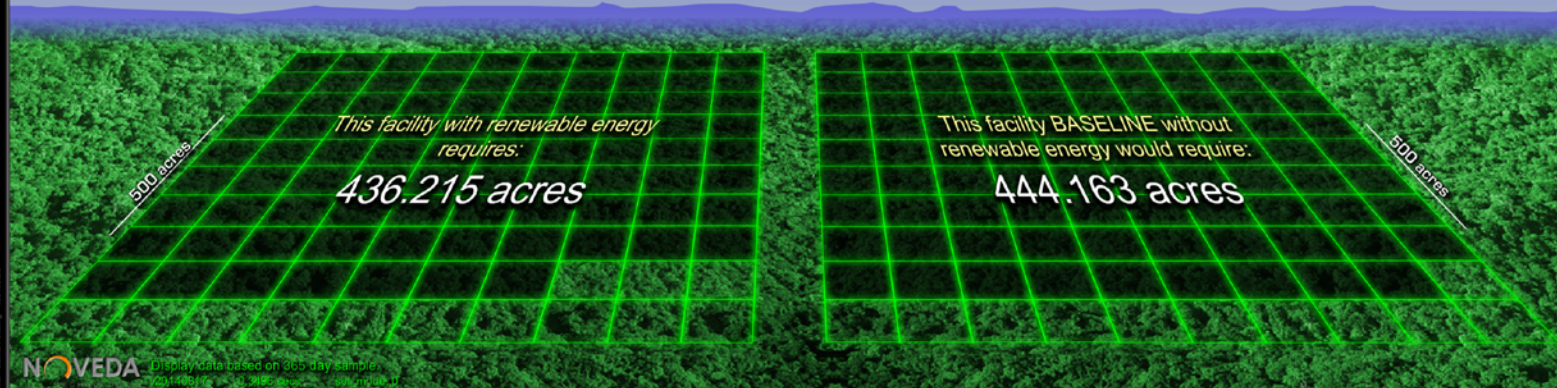
This facility's current energy use (**ACTUAL**) can be compared to its historical **BASELINE** consumption.

The use of renewable energy allows this facility to offset and reduce its annual carbon emissions (**CARBON footprint**).

This graphic depicts the carbon emission reduction contributed by a renewable energy system as well as any other energy saving measures.



The reduction in **CARBON footprint** impacts the forest by reducing the amount of new trees (**ENERGY footprint**\*) that would have to be planted to sequester the metric tons of CO<sub>2</sub> gas produced each year.



NOVEDA

Display data based on 965 day sample

©2014 NOVADA, INC. All rights reserved. NOVADA, INC.



---

## Questions & Answers



Design, develop and deliver your  
connected product.

@BuddyPlatform | [www.buddy.com](http://www.buddy.com)