

# Investor Presentation

Exploring in a world class base metal district  
– McArthur River Region, NT, Australia

Unlocking high grade gold – Colombia

January 2017

ASX:PMY

**Nature of this document:** The purpose of this presentation is to provide general information about Pacifico Minerals Limited (the 'Company'). Unless otherwise stated herein, the information in this presentation is based on the Company's own information and estimates. In attending this presentation or viewing this document you agree to be bound by the following terms and conditions.

**Not an offer:** This presentation is for information purposes only and does not constitute or form any part of any offer or invitation to sell or issue, or any solicitation of any offer to purchase or subscribe for, any securities in the Company in any jurisdiction. This presentation and its contents must not be distributed, transmitted or viewed by any person in any jurisdiction where the distribution, transmission or viewing of this document would be unlawful under the securities or other laws of that or any other jurisdiction.

**Not financial product advice:** This presentation does not take into account the individual investment objectives, financial situation and particular needs of each of the Company's Shareholders. You may wish to seek independent financial and taxation advice before making any decision in respect of this presentation. Neither the Company nor any of its related bodies corporate is licensed to provide financial product advice in respect of the Company's securities or any other financial products.

**Forward-looking statements:** Certain statements in the presentation are or may be "forward-looking statements" and represent the Company's intentions, projections, expectations or beliefs concerning, among other things, future operating and exploration results or the Company's future performance. These forward looking statements speak, and the presentation generally speaks, only at the date hereof. The projections, estimates and beliefs contained in such forward looking statements necessarily involve known and unknown risks and uncertainties, and are necessarily based on assumptions, which may cause the Company's actual performance and results in future periods to differ materially from any express or implied estimates or projections.

**Disclaimer:** No representation or warranty, express or implied, is made by the Company that the material contained in this presentation will be achieved or prove to be correct. Except for statutory liability which cannot be excluded, each of the Company, its directors, officers, employees, advisers and agents expressly disclaims any responsibility for the accuracy, fairness, sufficiency or completeness of the material contained in this presentation, or any opinions or beliefs contained in this document, and excludes all liability whatsoever (including in negligence) for any loss or damage which may be suffered by any person as a consequence of any information in this presentation or any error or omission there from. The Company is under no obligation to update or keep current the information contained in this presentation or to correct any inaccuracy or omission which may become apparent, or to furnish any person with any further information. Any opinions expressed in the presentation are subject to change without notice.

**Unverified information:** This presentation may contain information (including information derived from publicly available sources) that has not been independently verified by the Company.

**Monetary values:** Unless otherwise stated, all dollar values are in Australian dollars (A\$).

**Subject to change:** The information in this presentation remains subject to change without notice.

## **Competent Person Statements:**

The information in this announcement that relates to the Berrio Project, Urrao Project and Natagaima tenement application is based on information compiled by Mr David Seers, who is a Member of the Australian Institute of Mining and Metallurgy. Mr Seers is contracted exclusively to Pacifico Minerals Limited. Mr Seers has sufficient experience which is relevant to the style of mineralisation and type of deposit under consideration and to the activity which he is undertaking to qualify as a Competent Person as defined in the 2012 Edition of the "Australasian Code for Reporting of Exploration Results, Mineral Resources and Ore Reserves". Mr Seers consents to the inclusion in this presentation of the matters based on information in the form and context in which it appears.

The information in this announcement that relates to the Borrooloola West Project is based on information compiled by Mr David Pascoe, who is a Member of the Australian Institute of Geoscientists. Mr Pascoe is contracted exclusively to Pacifico Minerals Limited. Mr Pascoe has sufficient experience which is relevant to the style of mineralisation and type of deposit under consideration and to the activity which he is undertaking to qualify as a Competent Person as defined in the 2012 Edition of the "Australasian Code for Reporting of Exploration Results, Mineral Resources and Ore Reserves". Mr Pascoe consents to the inclusion in this presentation of the matters based on information in the form and context in which it appears.

- Board and Management team with proven track record of identifying, funding and developing projects
  - Pacifico is the Operator of a Joint venture with Sandfire Resources NL. (Pacifico 51% / Sandfire 49%) on the Borroloola West Project, NT, tenement package extends over 135km
  - Zinc and copper targets ready for diamond drilling
  - Zinc prospects at Berjaya and Four Mile occur in the same rock sequence (Barney Creek Formation) as the world class McArthur and Teena zinc-lead deposits, and lie only 60km and 20km respectively to the west
  - Potential for major stratabound copper mineralisation at Coppermine Creek. Significant copper mineralisation intersected during 2016 drilling. Open to south. Exploration to find higher grade zones planned
- .....
- Valuable in country experience with Pacifico having been operating in Colombia since 2011
  - Flagship Berrio Gold Project situated within the Segovia gold belt, the most prolific gold belt in Colombia from which gold has been exploited for 150+ years
  - Underground channel sampling of artisanal workings yielded multiple samples >1 oz/t Au at a faulted contact which has been mapped for 6.2km with an additional 7.8km of projected strike
  - Pipeline of quality projects in Colombia including the Natagaima prospect, highly prospective for precious and base metals

## Experienced Board and Management

### Simon Noon

*Managing Director*

### Richard Monti

*Non Executive Chairman*

### Peter Harold

*Non Executive Director*

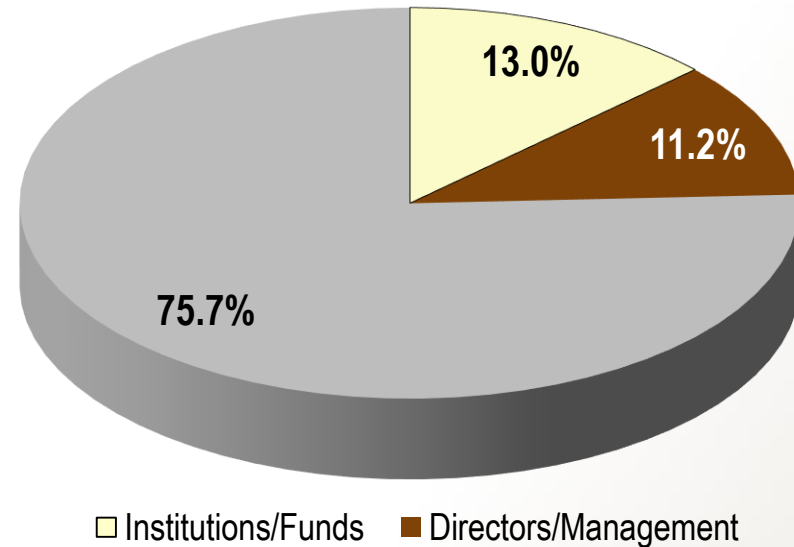
### Andrew Parker

*Non Executive Director*

### Barrie Bolton

*Head of Project Development*

## Shareholder breakdown – Top 20 owns 46%



## Capital structure

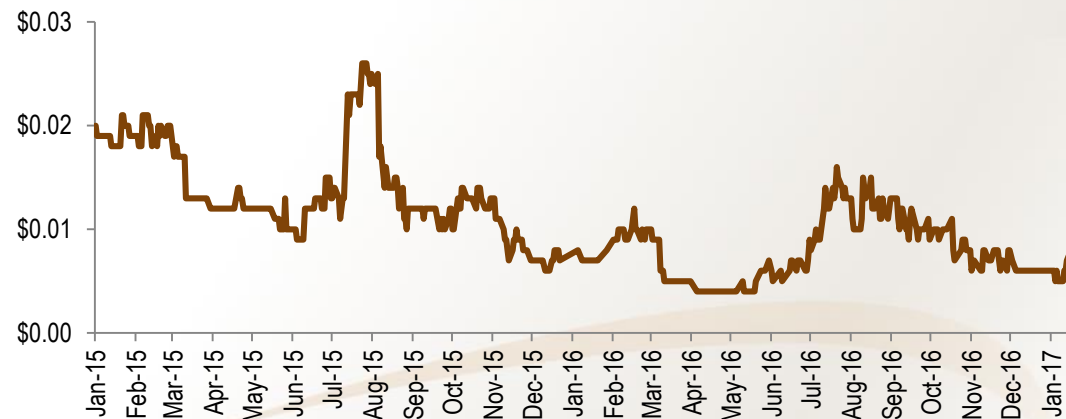
Share Price*	\$	0.007
No. of Shares Outstanding	m	593
Options on Issue	m	0
<b>Market Cap</b>	<b>\$m</b>	<b>4.2</b>
Cash**	\$m	0.8
Debt***	\$m	0.0
<b>Enterprise Value</b>	<b>\$m</b>	<b>3.4</b>

\* As at 16 January 2017

\*\* As at 31 December 2016

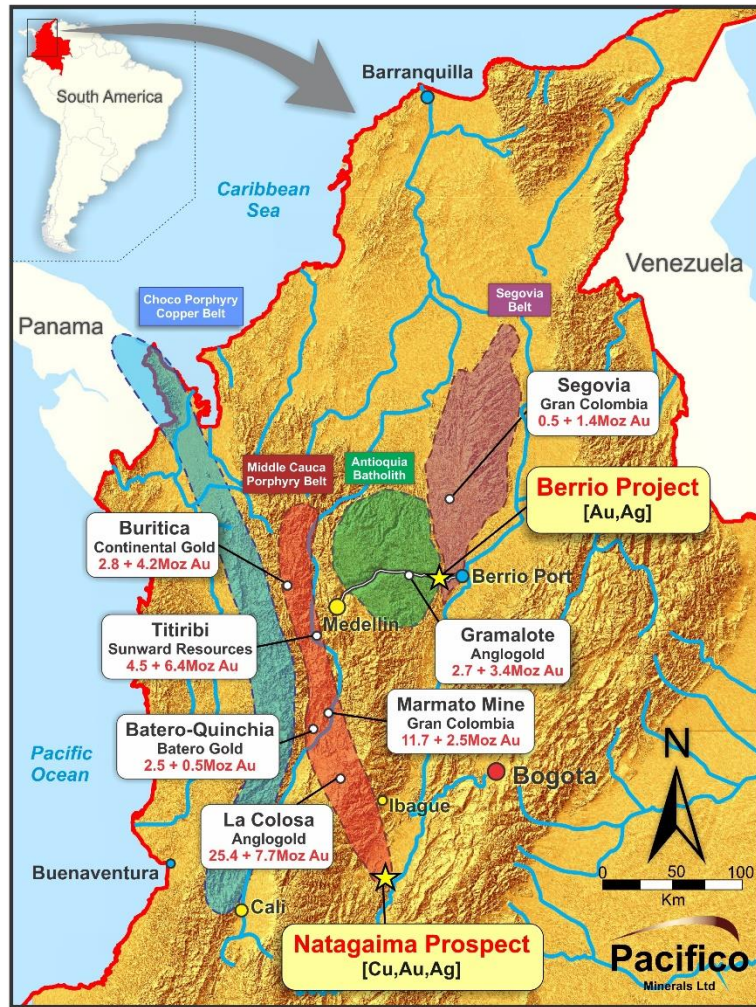
\*\*\* As at 31 December 2016

## Share price performance



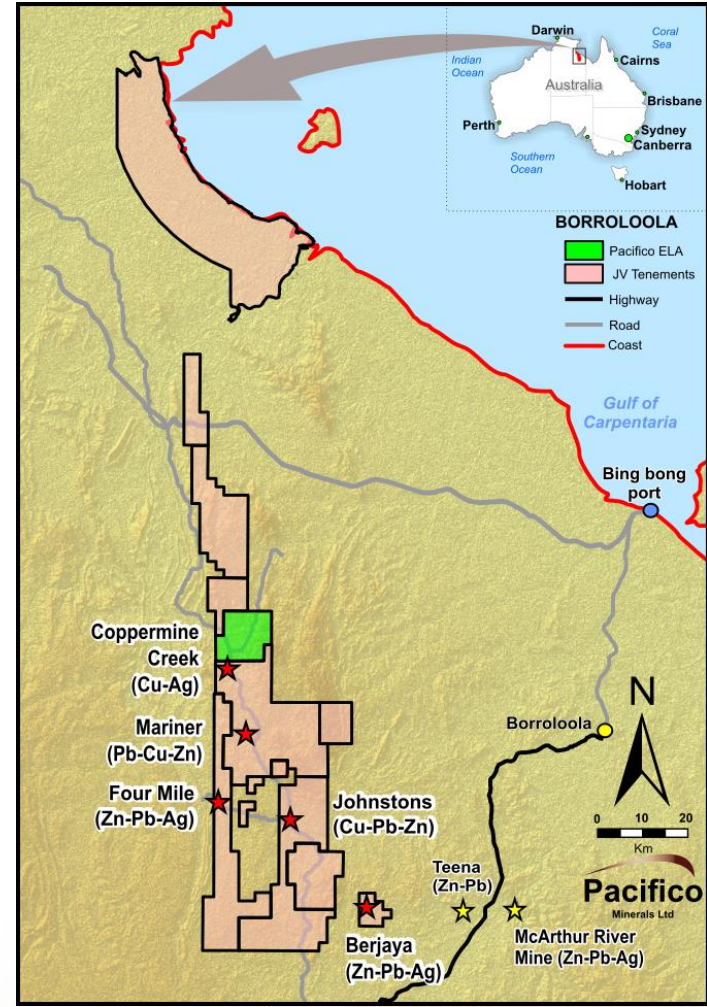


## Colombia



Project locations in relation to gold discovered resources (M&I + INF)

## Australia



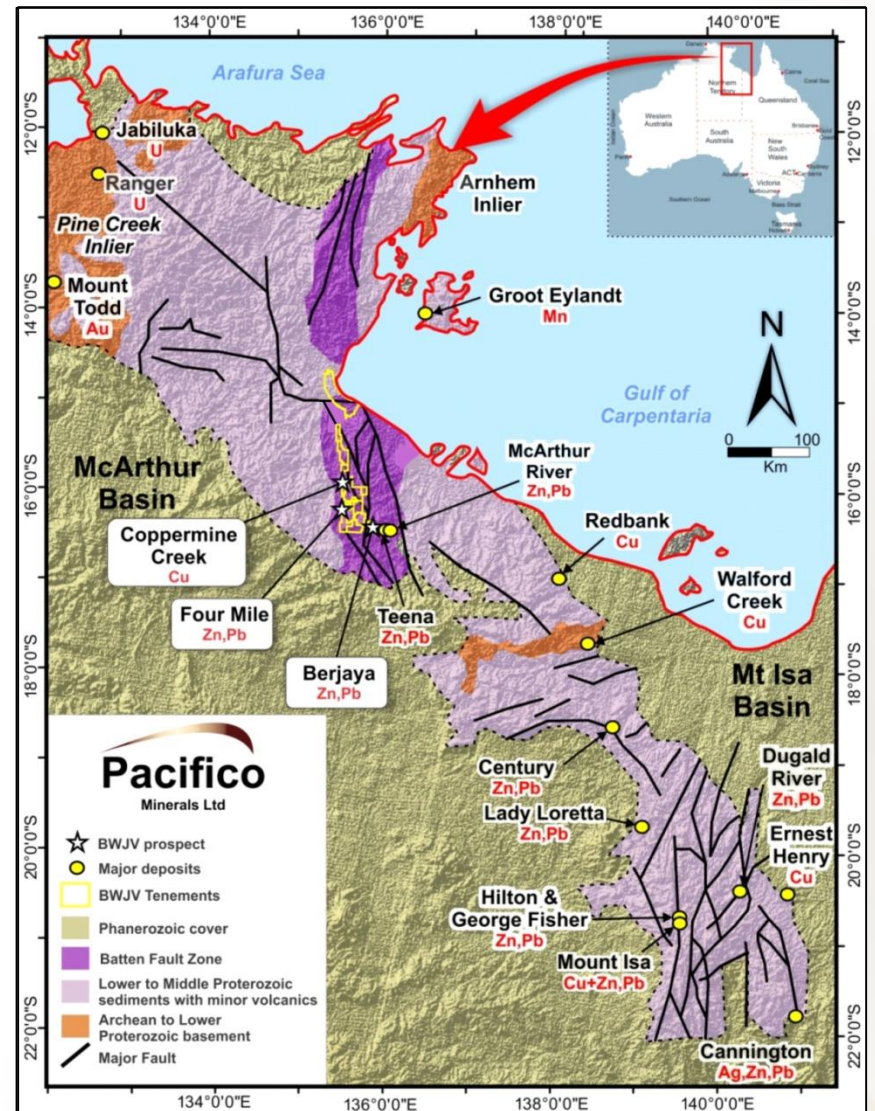
Borroloola West Project – Tenements and main prospects



## Zinc, Silver and Copper Project in the Northern Territory

### Project overview

- Pacifico has 51% interest in Borroloola West Joint Venture and Sandfire Resources NL (49%). Sandfire supportive of exploration strategy and contributed their share in 2016
- Outstanding and previously underexplored ground package covering ~1,800km<sup>2</sup> in East Arnhem Land of the Northern Territory
- Project area underlain by the McArthur Basin, one of interconnected Proterozoic basins which host several world class mines including McArthur River (just 30km east of Pacifico's project area), Mount Isa and Century
- Rox Resources recent ASX announcement\* of 58Mt of 11.1% Zn and 1.6% Pb lies only 20km east of the Berjaya tenement within the same stratigraphic package
- Diamond drill targets at Berjaya (zinc-lead-silver), Coppermine Creek (copper-cobalt), and Mariner (zinc-lead-silver)
- Shallow drill targets for RC drilling at Limestone Creek – Pacifico 100% (zinc-lead)



\* Rox Resources Ltd ASX Announcement 1 June 2016

## Prospects for diamond drilling

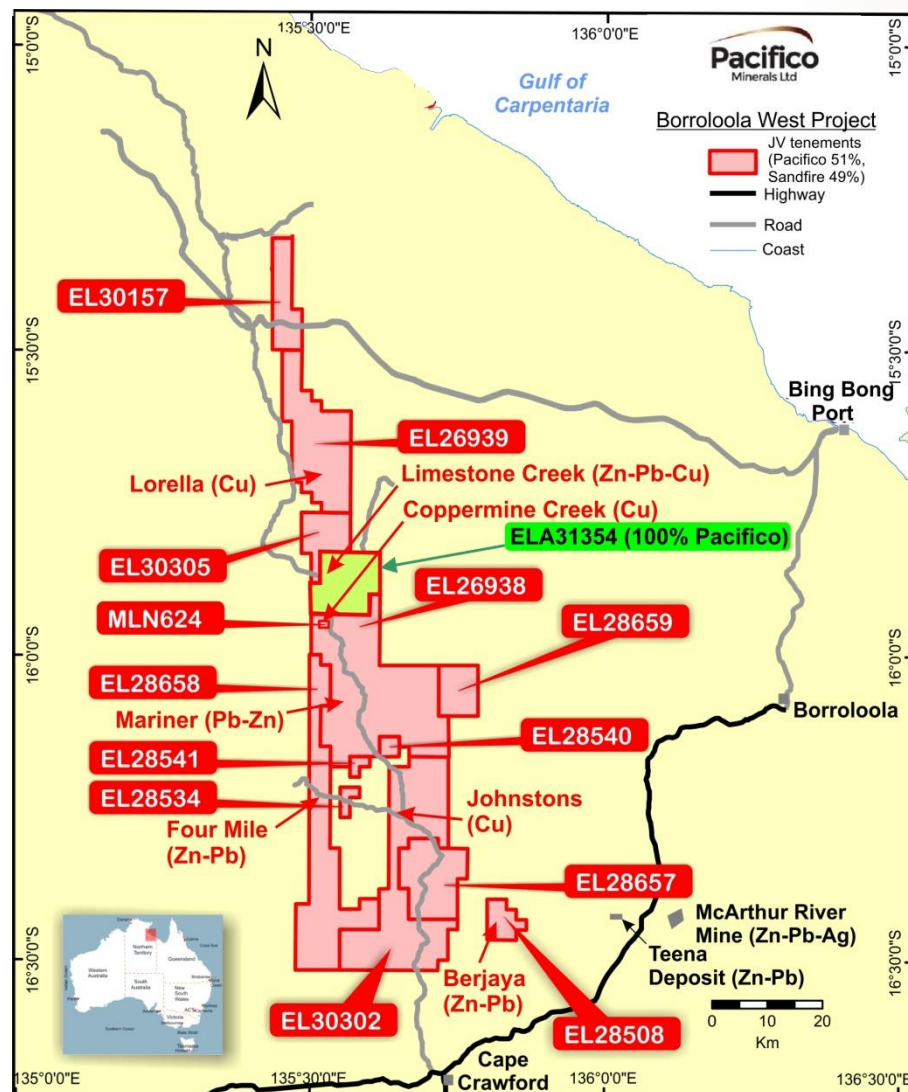
### Borroloola West Joint Venture

- **Coppermine Creek** – target Mount Isa style copper deposit. Evaporite horizon recognised as focus for stratabound copper mineralisation. Thick and continuous copper mineralisation intersected in 12 drill holes. Ground EM and 2 diamond drill holes proposed
- **Mariner** – zinc and lead mineralisation intersected in 2015 drilling by Pacifico. Diamond drill target established
- **Berjaya** - target zinc-lead SHMS deposit within Barney Creek stratigraphic package. Diamond drill target established

## Prospects for RC drilling

### Limestone Creek

- ELA31354 (Pacifico 100%) was selected for proximity of area to basaltic volcanics, favourable McArthur Group stratigraphy, complex fault intersections, and presence of known Cu-Pb occurrences
- Target stratabound zinc-lead mineralisation in the Amelia Dolomite. 5 RC holes proposed

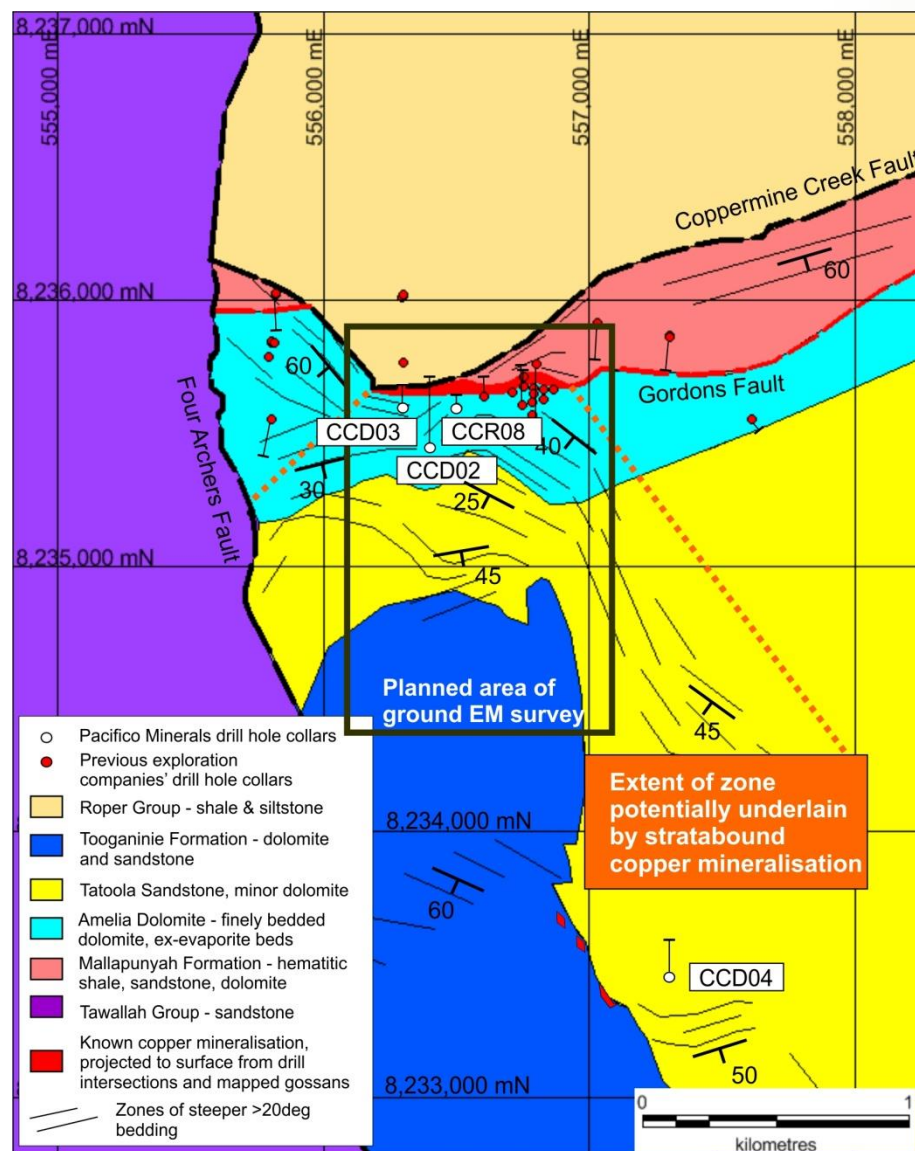


Borroloola West Project area



## Coppermine Cu-(Co-Ag)

- Thick continuous stratabound copper mineralised zone with a strike of 700m
- Open along several km to the south within flat to gently dipping stratigraphy
- Coppermine is the most significant mineralisation outside the McArthur River zinc-lead deposit area
- Preliminary ground EM survey planned to delineate the most conductive and potentially highest grade zones
- Diamond drilling planned for 2017 field season



*Geological plan showing previous drill collars*

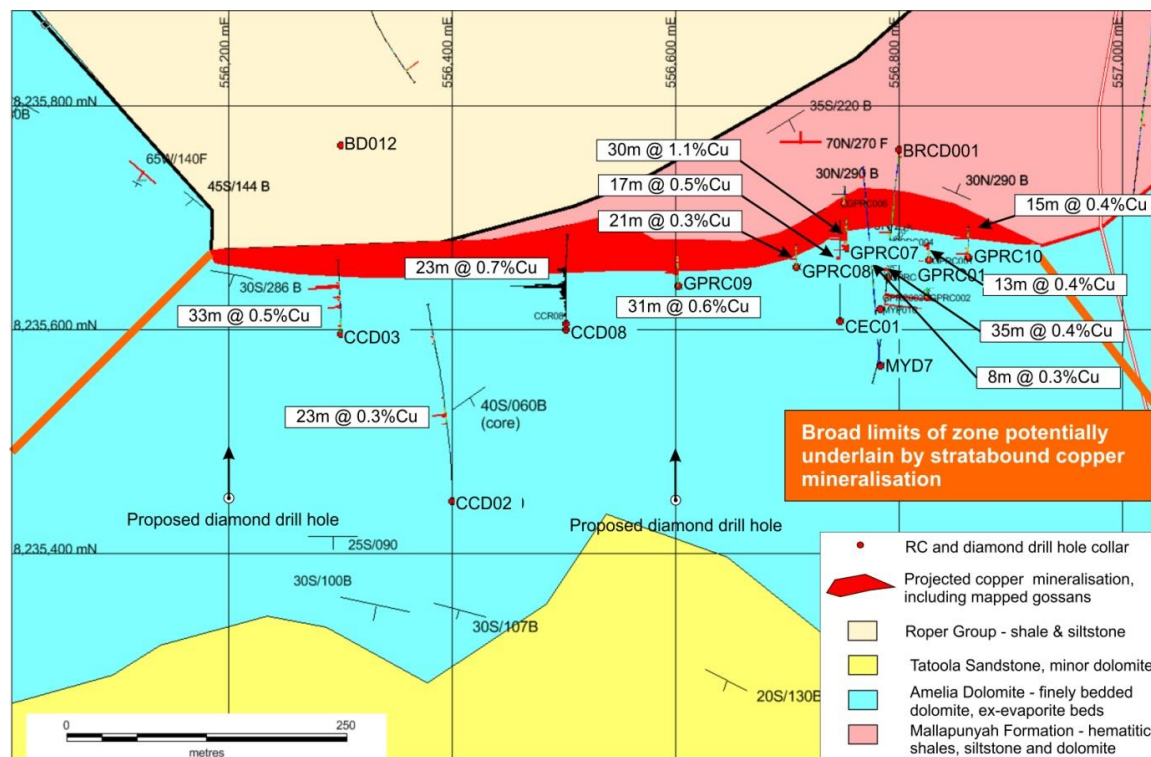


## Coppermine (continued)

*Geological plan showing projected drill hole traces, stratabound copper intersections and potential extent*

Hole ID	From (m)	To (m)	Inter-section (m)	Cu %
CCD03	68	73	5	2.5
incl	69	71	2	4.0
CCR08	48	51	3	2.8
GPRC4	0	5	5	2.0
GPRC7	15	28	13	2.0

*Intersections above 2% Cu*



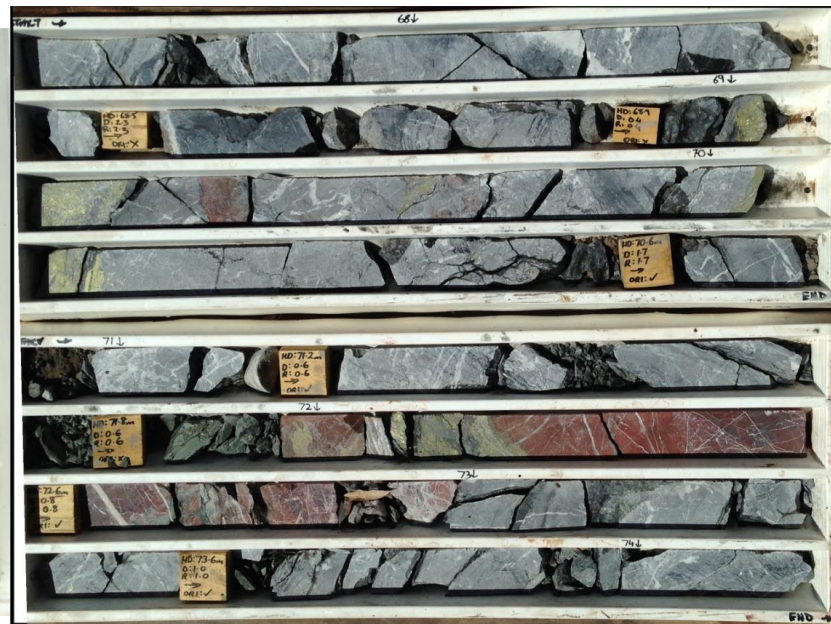
- In 2016 Pacifico RC hole CCR08 intersected 23m @ 0.7% Cu, including 10m @ 1.3% Cu. This hole confirmed continuity of the thick zone of continuous copper mineralisation over at least 700m
- 12 drill holes have an average intersection thickness of 26m @ 0.5% Cu, 0.02% Co and silver grades to 5g/t Ag
- Evaporite horizon with the Amelia Dolomite folded up against the fault is now regarded as the focus for copper mineralisation, which provides a much bigger stratabound target. Need intersections >20m @ >3% Cu
- 2 diamond holes are planned to test for higher grades of copper (cobalt-silver) mineralisation. Positions based on extending known mineralisation and on the ground EM survey

## Coppermine (continued)

- Extent of intense fracturing and dolomite-quartz alteration indicates drilling to date may have intersected only part of a very large stratabound copper mineralised system



*Drill core CCD03 – semi-massive chalcopyrite bands. Contain only very minor pyrite*



*Drill core CCD03 – semi-massive chalcopyrite bands in zone of brecciation, dolomitisation, and early brick red hematite alteration, hosted by Amelia Dolomite*

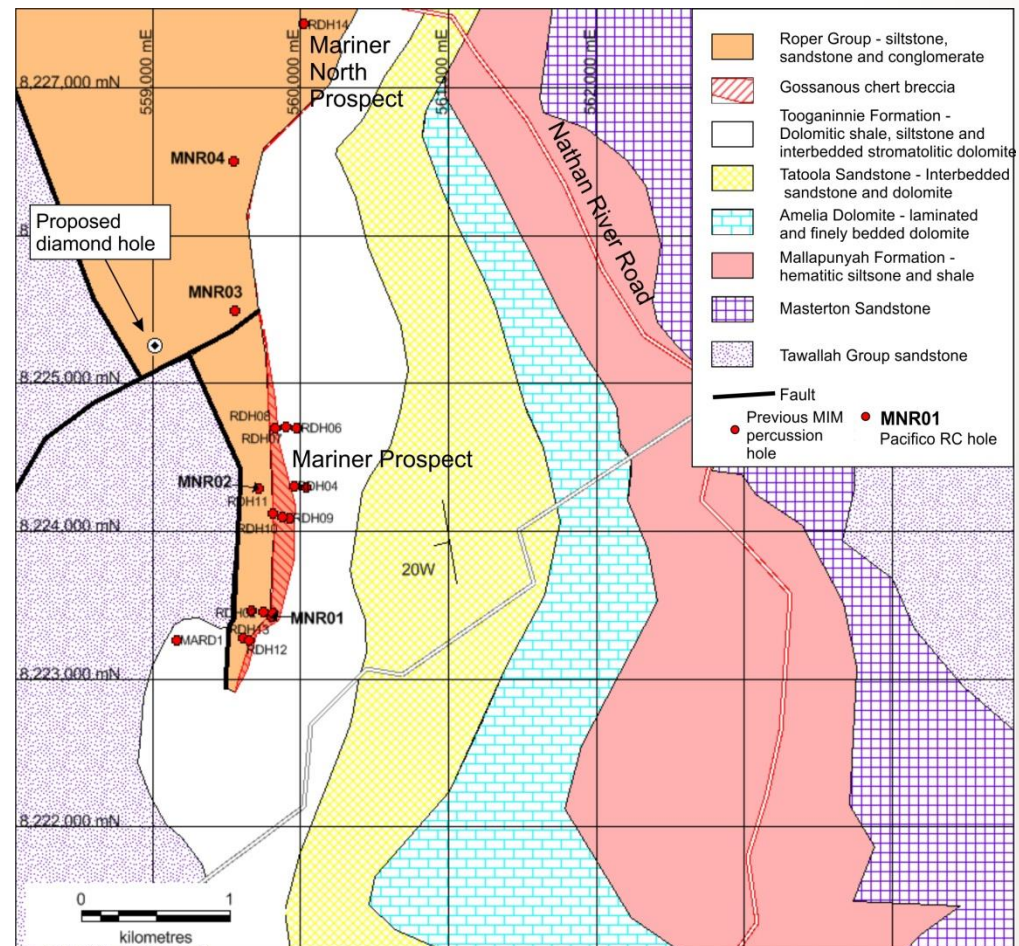


*Drill core CCD02, evaporite horizon, disseminated chalcopyrite. Visible ex-gypsum crystals*



## Mariner (Zn-Pb)

- 4 RC holes drilled by Pacifico in 2016
- Best intersection MNR01, 6 to 27m, 21m @ 1.0%Pb
- All mineralisation intersected was oxidised to cerussite, and may be indicative of the vicinity of significant zinc-lead primary sulphide mineralisation in this weathered terrain
- Host rocks to stratabound mineralisation are black shales and interbedded stromatolitic dolomite collapse breccia. Mapped as upper Tooganinie Formation
- Significant McArthur River SHMS pathfinder trace elements (Tl, Sb, Ag, Zn) in black shale in MNR04
- Potential, and space, for a significant zinc-lead deposit lies to the NW of the Mariner Prospect
- One diamond hole proposed initially, to test for both zinc mineralisation and favourable stratigraphy (sulphidic black shales)

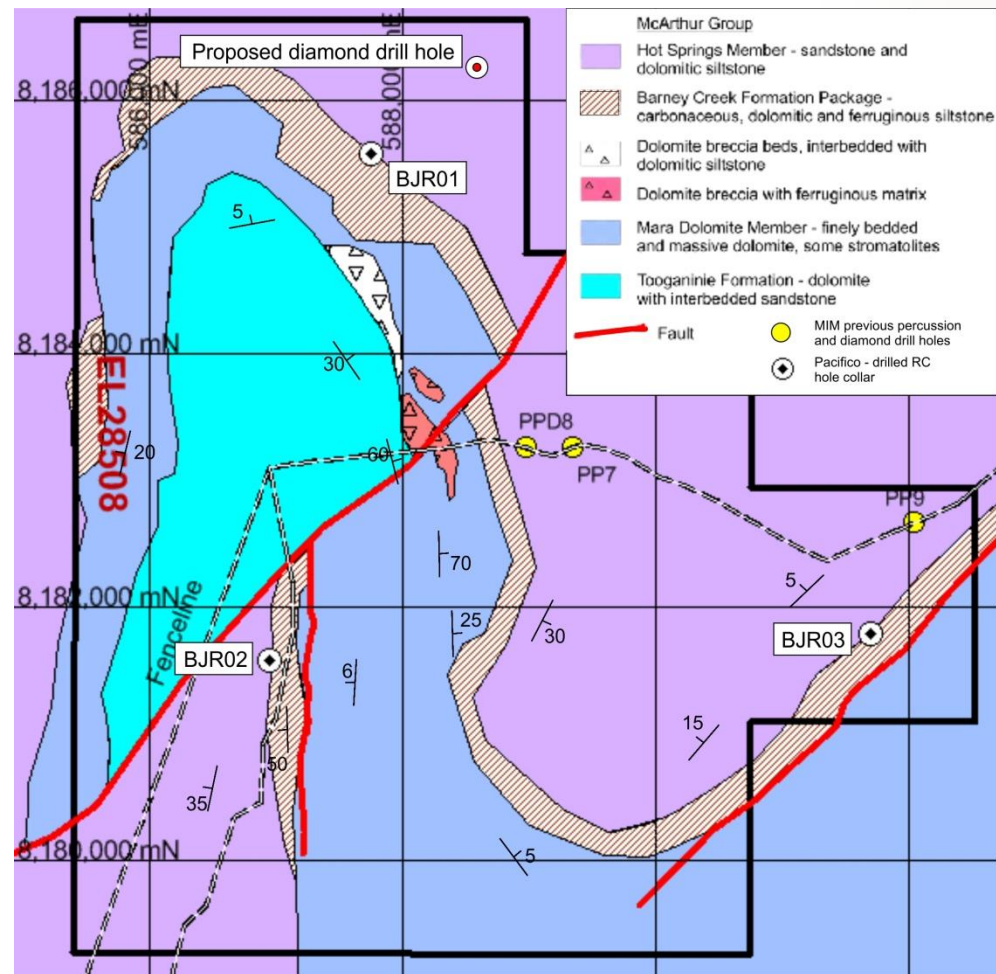


**Mariner –geology, previous percussion drilling, and Pacifico 2016 RC collars**



## Berjaya (Zn-Pb-Ag)

- 30km along strike from McArthur River Mine – Australia's largest Zn-Pb-Ag producer and one of the largest Zn-Pb-Ag deposits in the world
- 20km along strike from Rox Resources' Teena zinc –lead deposit
- Contains several kilometers of Barney Creek Formation package and major growth faults – key geological components at both McArthur River and Teena
- Drill target for diamond drilling. VTEM conductivity anomaly in Barney Creek Formation
- Pacifico BJR02 hole confirmed unmapped Barney Creek Formation. Ground follow up along strike to south to establish targets

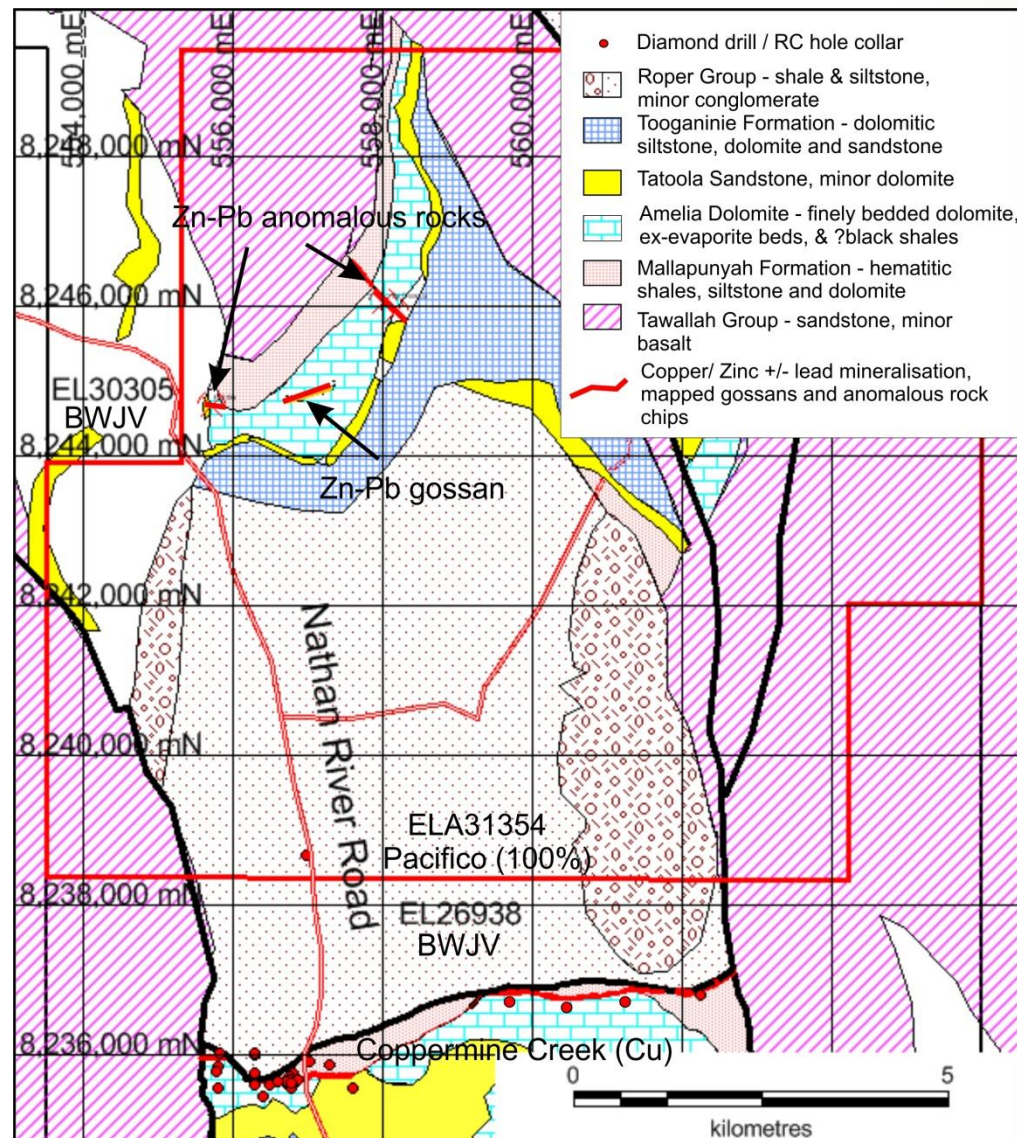


*Berjaya interpreted geology*

## Limestone Creek (Zn-Pb)

100% Pacifico Exploration licence application

- Gossanous breccia, 600m strike, rock chips up to 0.44% Zn and 0.61% Pb – significant values in highly weathered leached terrane
- Stratabound, in Amelia Dolomite black shales and dolomitic siltstones, could continue along strike under cover, dips about 30deg south
- 5 x RC holes, 150m each, planned
- Licence expected to be granted Q1 2017



Limestone Creek, ELA 31354 (100% Pacifico)



- Rich mineral endowment and established producer of gold, nickel, coal, oil and emeralds
- Limited exploration over the last 40 years with <5% of country explored with modern exploration techniques and technology
- Significant improvement in security in Colombia over the last decade
- Andean mountain chain is host to numerous and diverse metal deposits and is underexplored in Colombia
- Majors operating in Colombia include AngloGold Ashanti, Anglo American, BHP and Glencore
- Favourable mining royalties (3.2%) and corporate tax rate (25%)



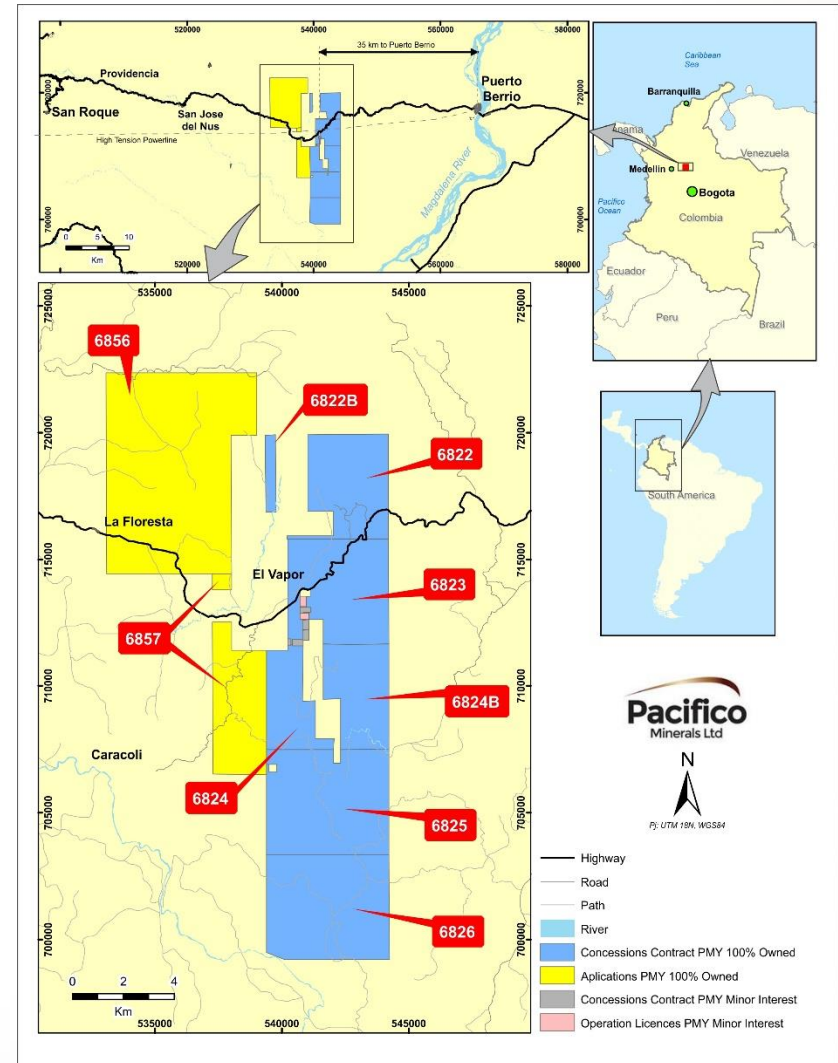
Major Andean porphyry copper deposits & mines (contained metal)



## Project overview

- Project area contains a number of operational and historical artisanal-scale adits and tunnels
- Mining friendly local population and readily available workforce
- During 2014 Pacífico drill tested a small tenement package in which it now holds a minor interest
- 22 holes were successfully completed with 13 holes intersecting over 10 g/t Au **including**; 10 holes over 15 g/t Au and 3 holes over an ounce per tonne<sup>1</sup>
- During 2014 exploration it became apparent that prospective mineralisation extended far beyond the boundaries of the small tenement package
- In early 2015 Pacífico signed a binding agreement with AngloGold Ashanti SA to acquire a 100% interest in a suite of tenements surrounding and adjacent to the tenements Pacífico had drill tested

## Flagship Au Project in Antioquia

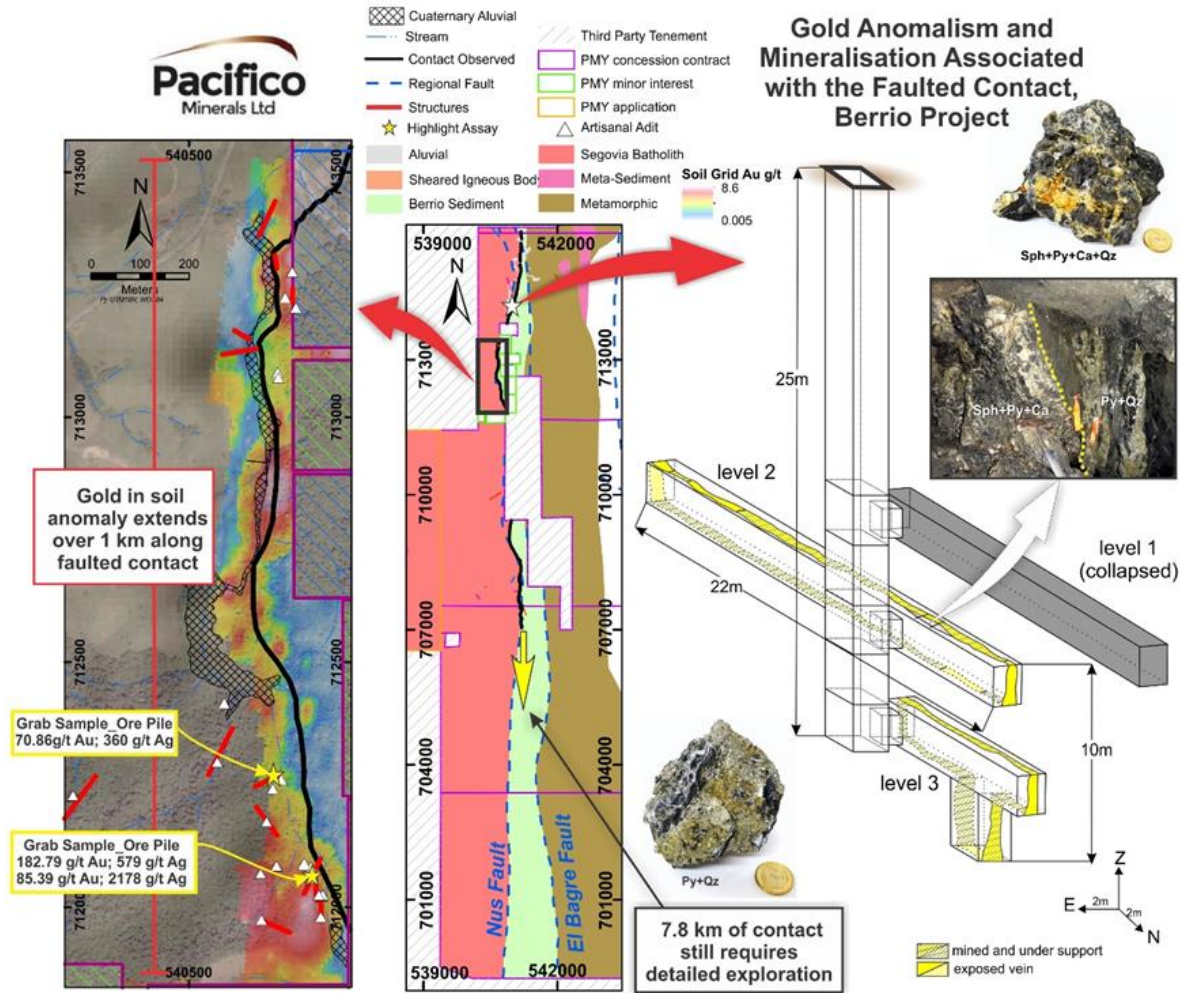


Tenement locations

<sup>1</sup> See ASX announcements 18 December and 14 August 2014 for drilling results on ground which Pacífico has a minor interest in.

## Project overview (continued)

- Three distinct mineralised scenarios recognised to date:
  - Shear hosted lodes within Berrio sediments
  - Faulted contact between Segovia Batholith and Berrio Sediments
  - High grade veins in the Segovia Batholith
- Grab samples<sup>1</sup> at the faulted contact at Berrio have generated significant assays including:
  - 240.11 g/t Au, 1,178 g/t Ag and 2.02% Zn (M06120)
  - 46.88 g/t Au, 166 g/t Ag and 1.12% Zn (M06121)
- Underground channel sampling<sup>2</sup> from artisanal workings yielded multiple samples >1 oz/t Au:
- 11 drill holes completed early 2016 confirmed mineralisation at the contact<sup>3</sup>



Gold anomalism and mineralisation associated with the faulted contact at Berrio

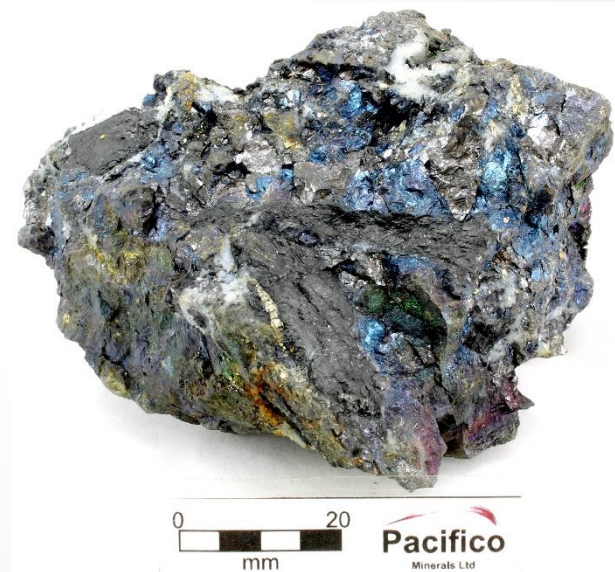


## Milestones

- ✓ **Aug 2014:** Phase one drilling intersects wide zones of Au within which occur bonanza grade ore shoots
- ✓ **Dec 2014:** Phase two drilling confirms further high grade gold and defines a new mineralised shear zone
- ✓ **Jan 2015:** Signed landmark agreement with AngloGold Ashanti to significantly expand project
- ✓ **Feb 2015:** Faulted contact, considered by Pacífico to be highly prospective, is mapped for 6.2 km in the new tenement package.
- ✓ **Mar 2015:** Rationalised project area
- ✓ **November 2015:** Underground channel sampling identifies high-grade gold mineralization at depth close to the faulted contact, returning multiple ounce gold and silver assays.
- ✓ **March 2016:** First round of drill testing at the contact confirms mineralisation at depth.
- ✓ **November 2016:** Exploration over projected extensions of mineralised shears commenced
- ☐ **February:** Exploration update to market expected
- ☐ **February/March:** Extensive Auger soil sampling and geological mapping to commence aiming to provide robust targets for diamond drilling.
- ☐ **March/April:** Focussed diamond drill program based on results from Nov-Feb exploration programs



*Brecciated shales with quartz fill and disseminated pyrite*

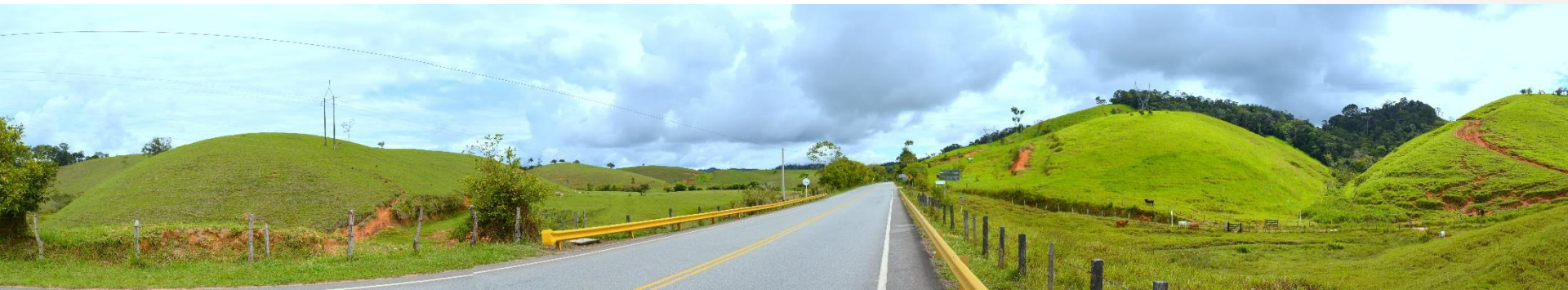


*Sheared carbonaceous sediments with quartz, marmatite, galena and pyrite*

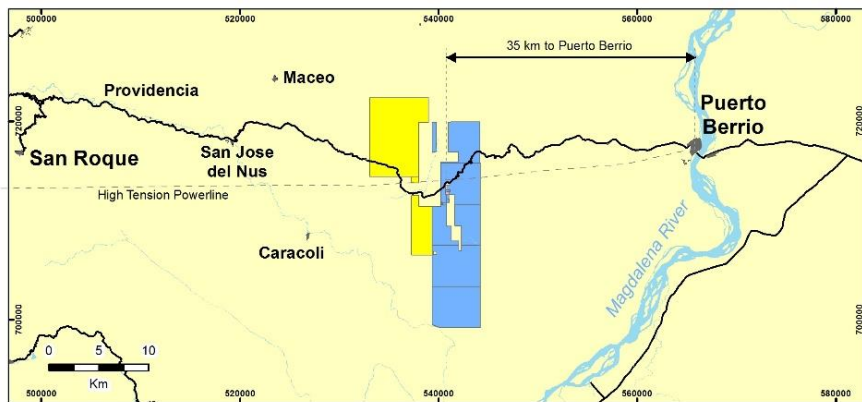


## Excellent infrastructure

- Sealed roads to towns provide easy access to services and labour
- Hydro power, with high tension power lines running through the project
- 35km along sealed roads to port (Puerto Berrío) which is navigable to the Caribbean Sea
- Mobile telephone coverage



*High tension powerlines and highway*



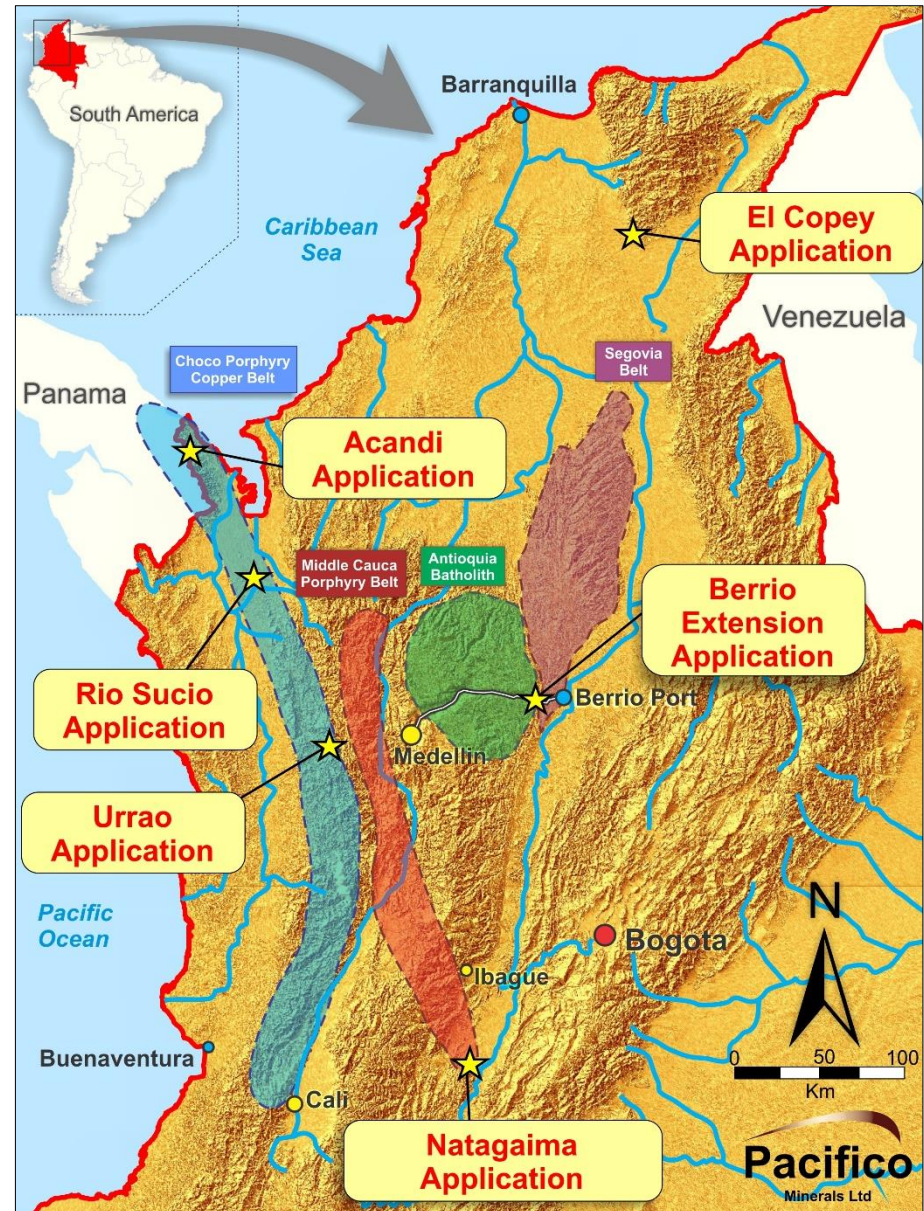
*Berrio location map*



*Berrio port and Magdalena River*

# Pipeline of Quality Projects (Colombia)

- Pacífico's position in Colombia over several years provided the opportunity to identify and evaluate a range of exciting precious and base metal prospects around the country
- As ground became available Pacífico lodged several high quality tenement applications ahead of its rivals
- Tenement applications for 6 projects totalling >66,000ha are under review by the Colombian Ministry of Mines
- Pacífico's tenement applications are associated with highly prospective geological terrains including:
  - Choco Porphyry Copper Belt
  - Middle Cauca Porphyry Belt
  - Antioquia Batholith



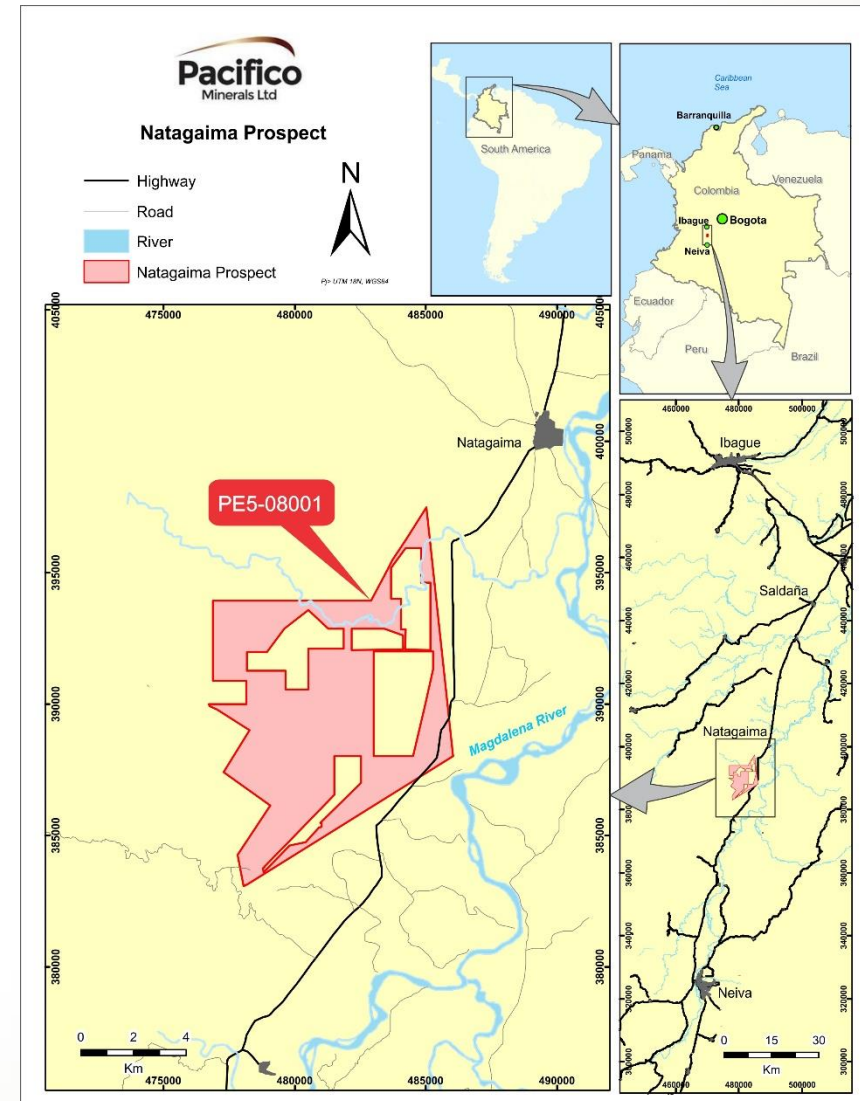
Tenement Application Locations



## Cu-Au-Ag Tenement application in Tolima

### Project overview

- Application lodged for the Natagaima project
- Colombia operates a “first right” system with its licence application process and Pacífico was the first, of many interested parties, to register its application over Natagaima upon the area becoming available
- Located within the Middle Cauca Porphyry Belt
- Near existing electrical lines, roads, rail line and a major river
- Mapping, outcrop sampling and project wide stream sediment sampling has generated very encouraging geochemical anomalies



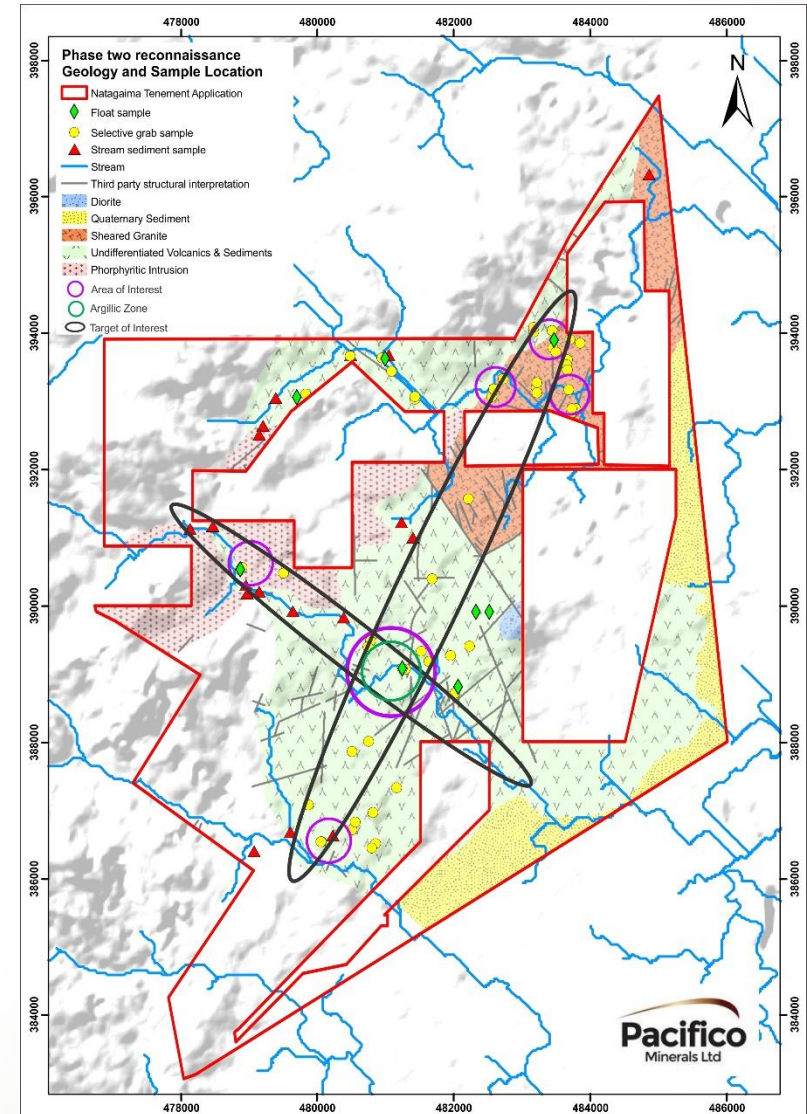
*Tenement application location*



## Cu-Au-Ag Tenement application in Tolima

### Project overview (continued)

- Initial work indicates prospectivity for epithermal and porphyry style mineralisation
- Two mineralised and intersecting trends identified are prospective for precious and base metals
- Selective grab sampling<sup>1</sup> generated the following grades:
  - 8.42g/t Au
  - 6.2% Cu
  - 2.3g/t Au
  - 1.35% Cu, 9.3% Pb and 1.12% Zn
  - 2.1% Cu and 1,395g/t Ag
- Several programs for follow-up exploration are under consideration including:
  - Targeted detailed mapping
  - Channel sampling of gold bearing quartz veins
  - Mag and IP survey
  - Trenching



<sup>1</sup> See ASX announcements 28 April and 27 January 2015. Selective grab samples may not be representative.

## Australia

- Diamond drill and RC programs<sup>1</sup> planned for May/June 2017, results in June/July 2017
- Granting<sup>2</sup> of new highly prospective exploration licence expected Q1 2017 (ELA31354; Pacifico 100%)

## Colombia

- February 2017 Berrio exploration update including exploration results over projected extensions of mineralised shears
- March/April 2017: Focussed diamond drill program based on results from Nov 2016 -Feb 2017 exploration programs

<sup>1</sup> Subject to heritage site clearances and additional funding being sourced

<sup>2</sup> Grant subject to S.29 Native Title Act and S.71 MTA Objections



## Contact us

### **Perth Office**

Level 10, 553 Hay Street

PERTH WA 6000

Telephone: + 61 (0)8 6266 8642

Facsimile: +61 (0)8 9421 1008

### **Postal Address**

PO Box Z5487

PERTH WA 6831

Email: [info@pacificominerals.com.au](mailto:info@pacificominerals.com.au)

Web: [www.pacificominerals.com.au](http://www.pacificominerals.com.au)