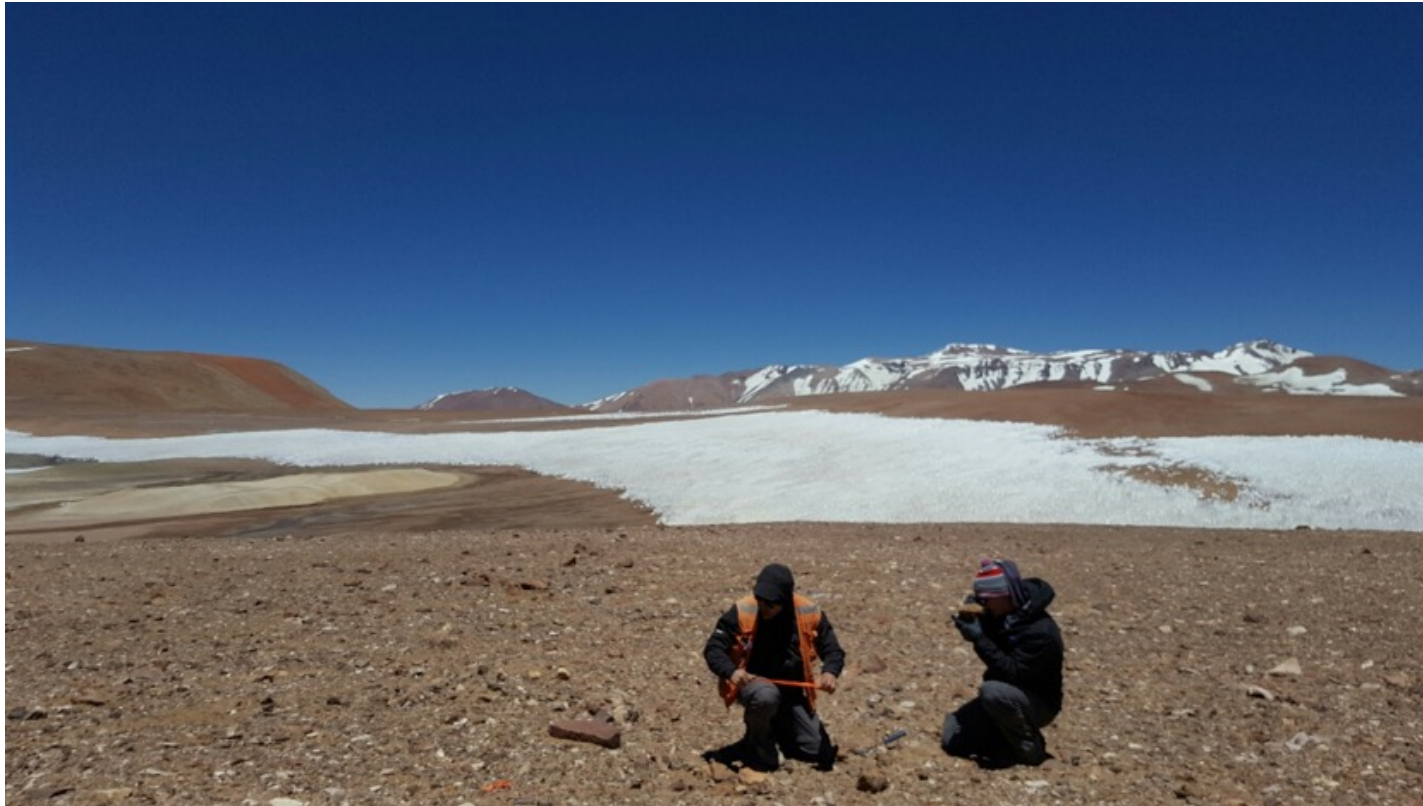


# CHILE GOLD EXPLORATION



# CHILE GOLD EXPLORATION



## **Forward-Looking Statements**

This presentation has been prepared by EMU NL. This document contains background information about EMU NL current at the date of this presentation. The presentation is in summary form and does not purport to be all inclusive or complete. Recipients should conduct their own investigations and perform their own analysis in order to satisfy themselves as to the accuracy and completeness of the information, statements and opinions contained in this presentation.

This presentation is for information purposes only. Neither this presentation nor the information contained in it constitutes an offer, invitation, solicitation or recommendation in relation to the purchase or sale of shares in any jurisdiction.

This presentation may not be distributed in any jurisdiction except in accordance with the legal requirements applicable in such jurisdiction. Recipients should inform themselves of the restrictions that apply in their own jurisdiction. A failure to do so may result in a violation of securities laws in such jurisdiction.

This presentation does not constitute investment advice and has been prepared without taking into account the recipient's investment objectives, financial circumstances or particular needs and the opinions and recommendations in this presentation are not intended to represent recommendations of particular investments to particular persons. Recipients should seek professional advice when deciding if an investment is appropriate. All securities transactions involve risks, which include (among others) the risk of adverse or unanticipated market, financial or political developments.

To the fullest extent permitted by law, EMU NL, its officers, employees, agents and advisers do not make any representation or warranty, express or implied, as to the currency, accuracy, reliability or completeness of any information, statements, opinions, estimates, forecasts or other representations contained in this presentation. No responsibility for any errors or omissions from this presentation arising out of negligence or otherwise is accepted.

This presentation may include forward-looking statements. Forward-looking statements are only predictions and are subject to risks, uncertainties and assumptions which are outside the control of EMU NL. Actual values, results or events may be materially different to those expressed or implied in this presentation. Given these uncertainties, recipients are cautioned not to place reliance on forward looking statements. Any forward looking statements in this presentation speak only at the date of issue of this presentation. Subject to any continuing obligations under applicable law and the ASX Listing Rules, EMU NL does not undertake any obligation to update or revise any information or any of the forward looking statements in this presentation or any changes in events, conditions or circumstances on which any such forward looking statement is based.

## **Competent Person's Statement – Exploration Results**

The information in this report that relates to Exploration Results is based on information compiled by Mr. Greg Steemson who is a Fellow of The Australasian Institute of Mining and Metallurgy. Mr. Steemson is the managing director of EMU NL and has sufficient experience that is relevant to the style of mineralisation and type of deposit under consideration and to the activity which he is undertaking to qualify as Competent Person as defined in the 2012 Edition of the Australasian Code for Reporting of Exploration Results, Mineral Resources and Ore Reserves. Mr Steemson consents to the inclusion in the report of the matters based on his information in the form and context in which it appears.

# CHILE GOLD EXPLORATION



Salares Norte (Gold Fields) - Inferred Resource of 23.3 Mt @ 4.2 g/t Au & 44 g/t Ag, for 3.1 Moz Au & 34 Moz Ag

Maricunga Mine (Kinross ) - 390 Mt @ 0.7 g/t Au

Cerro Casale (Barrick/Kinross) - 1,200 Mt @ 0.6 g/t Au

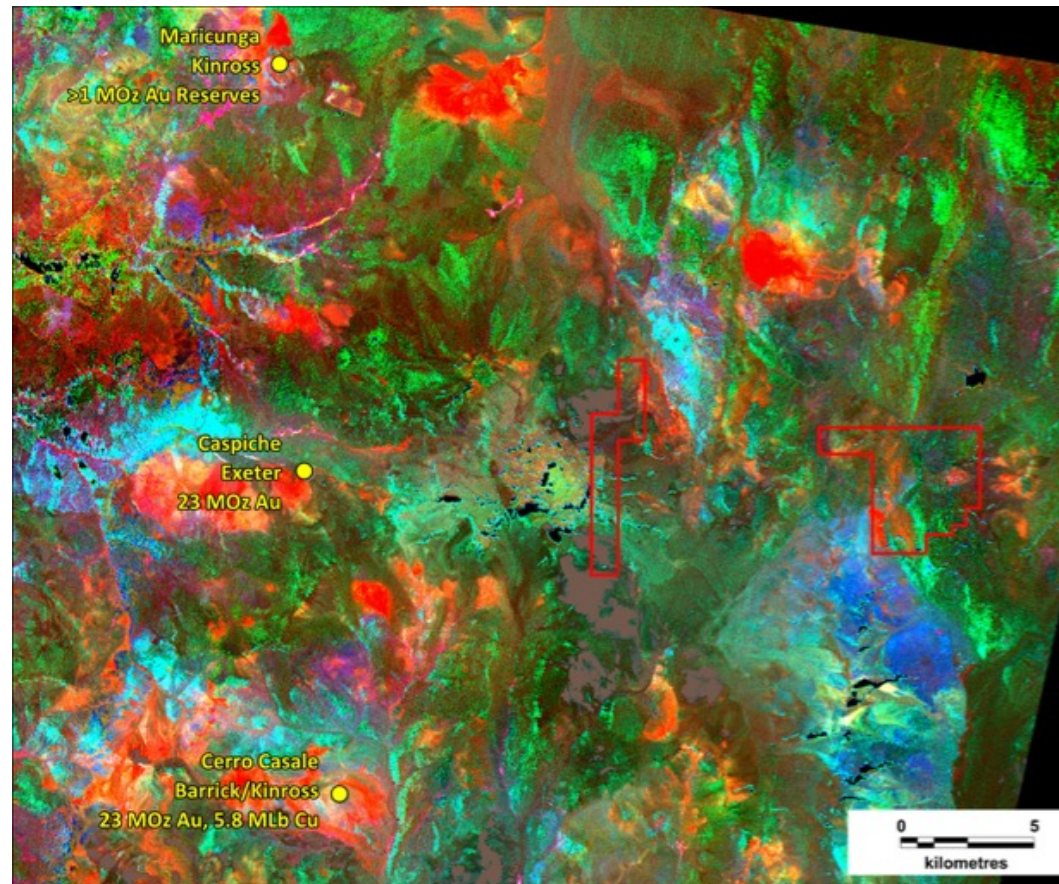
Cerro Maricunga Mine (Atacama Pacific) - 473 Mt @ 0.4 g/t Au

Caspiche project (Exeter ) - 810 Mt @ 0.67 g/t Au

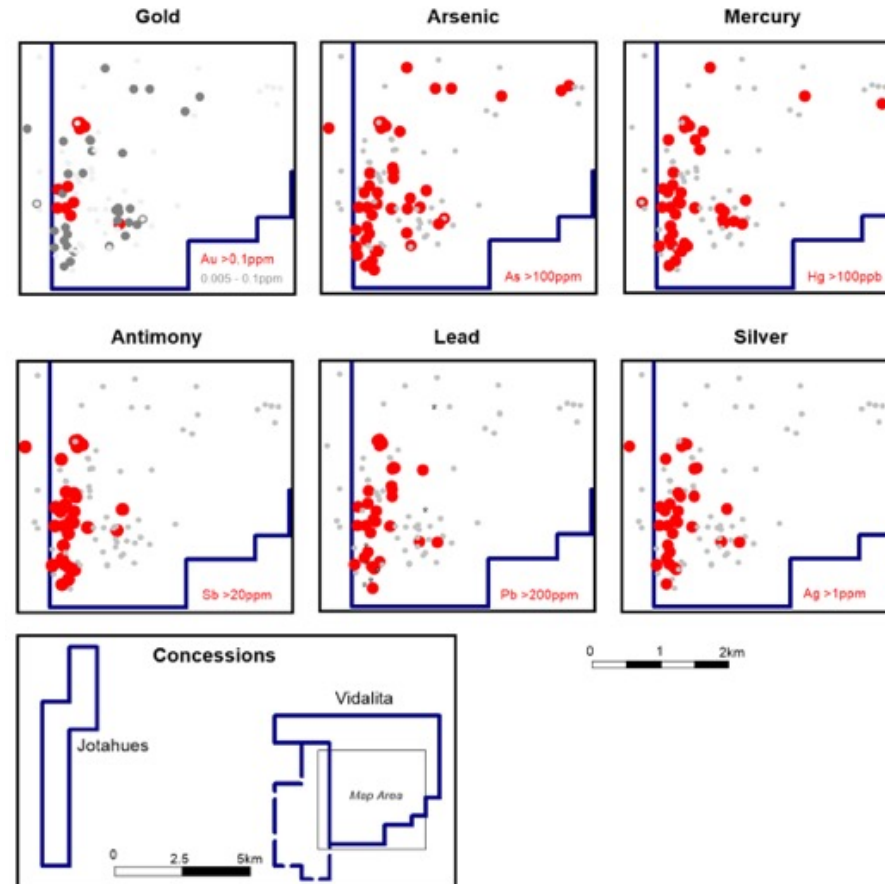
Alturas (Barrick) - 5.5M oz @ 1.25 g/t; intercepts of 170 meters grading 2.76 g/t Au



# CHILE GOLD EXPLORATION



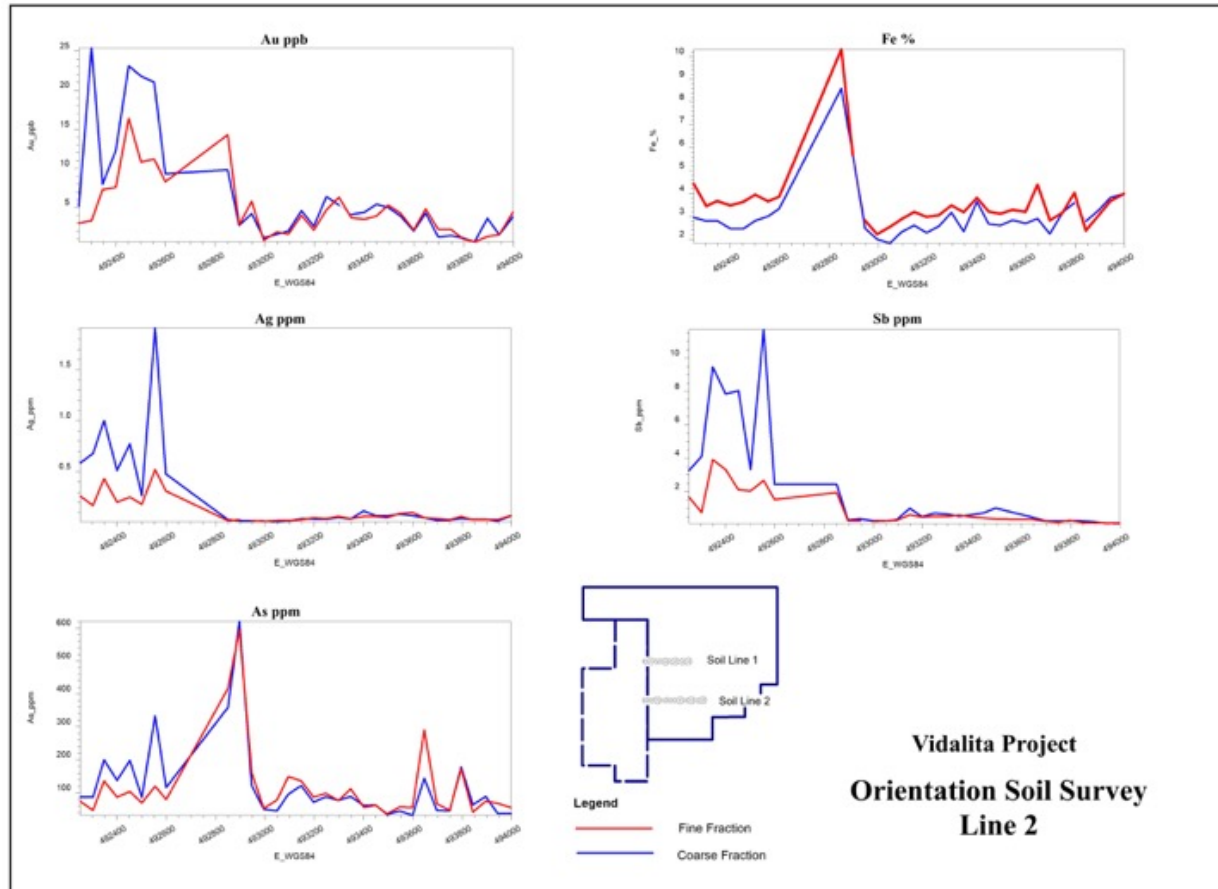
# CHILE GOLD EXPLORATION



Rock geochemistry from surface prospecting and mapping



# CHILE GOLD EXPLORATION



Orientation geochemistry

# CHILE GOLD EXPLORATION



5.5 g/t Au exposure



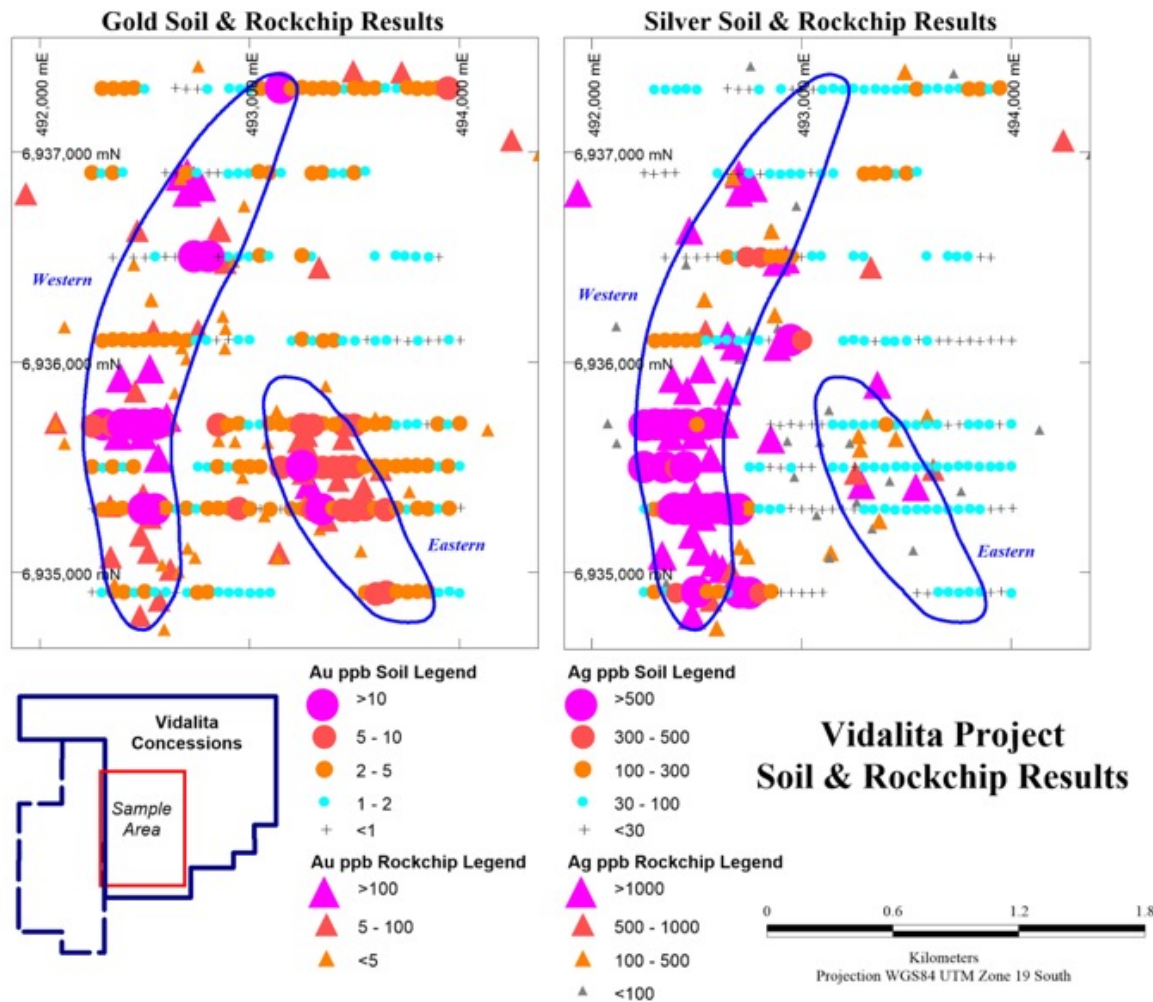
# CHILE GOLD EXPLORATION



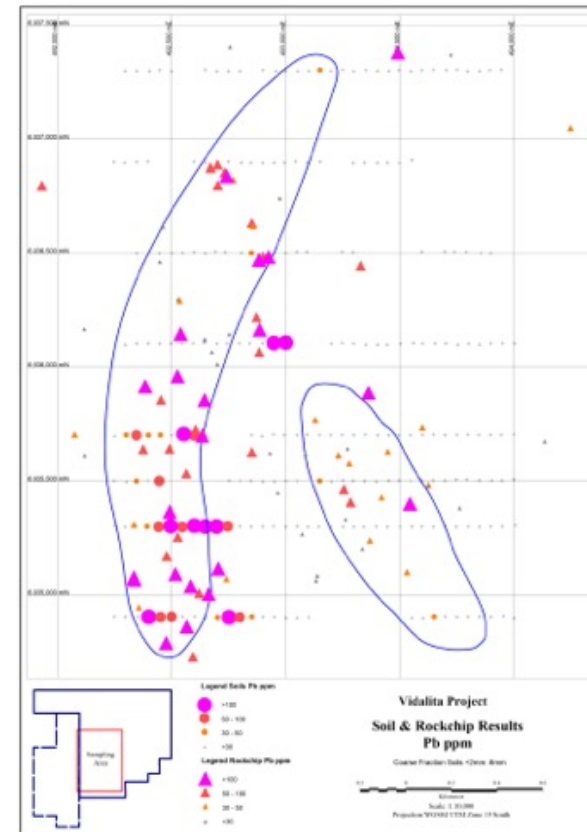
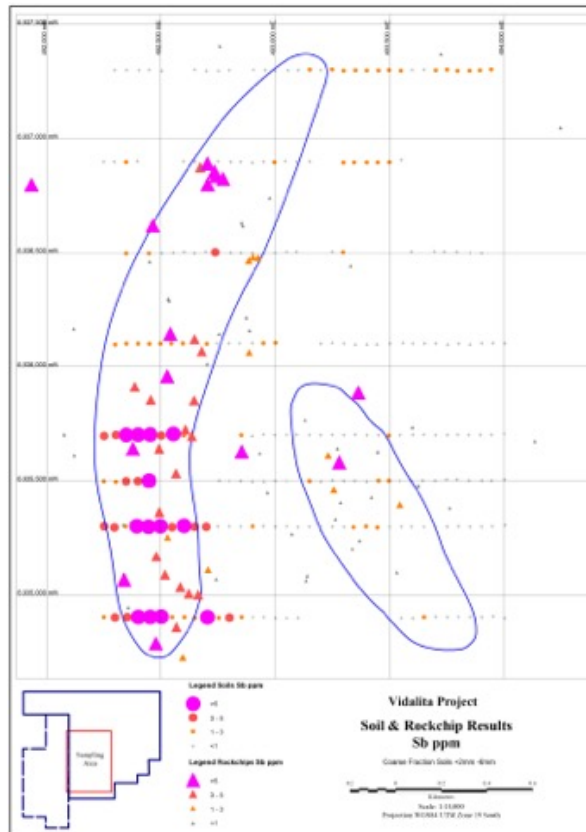
5.5 g/t Au exposure



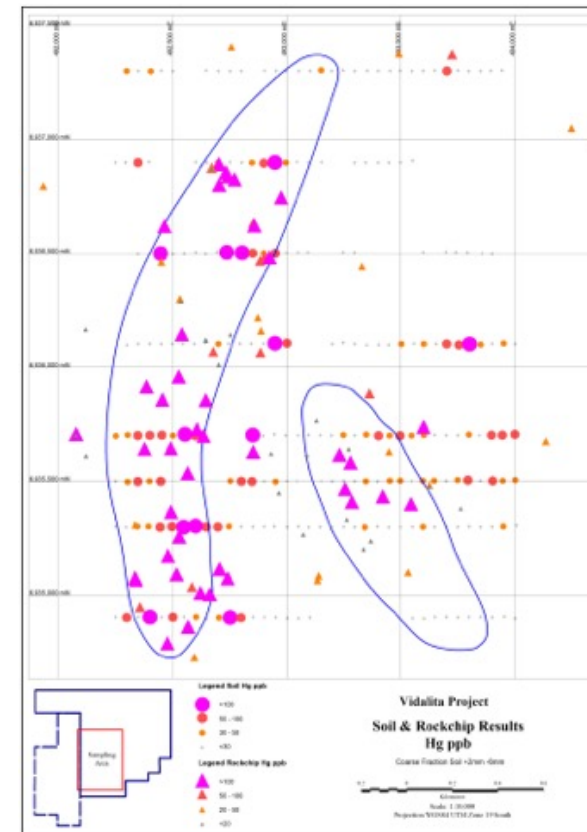
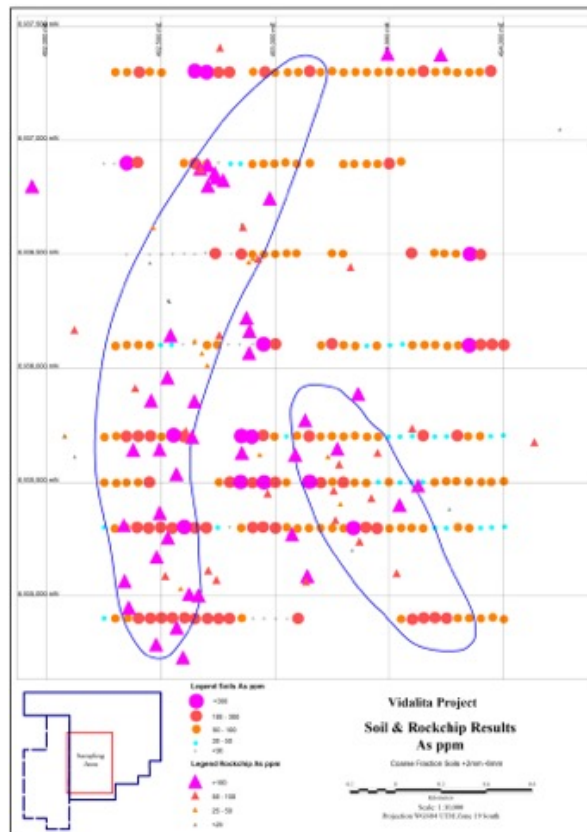
# CHILE GOLD EXPLORATION



# CHILE GOLD EXPLORATION

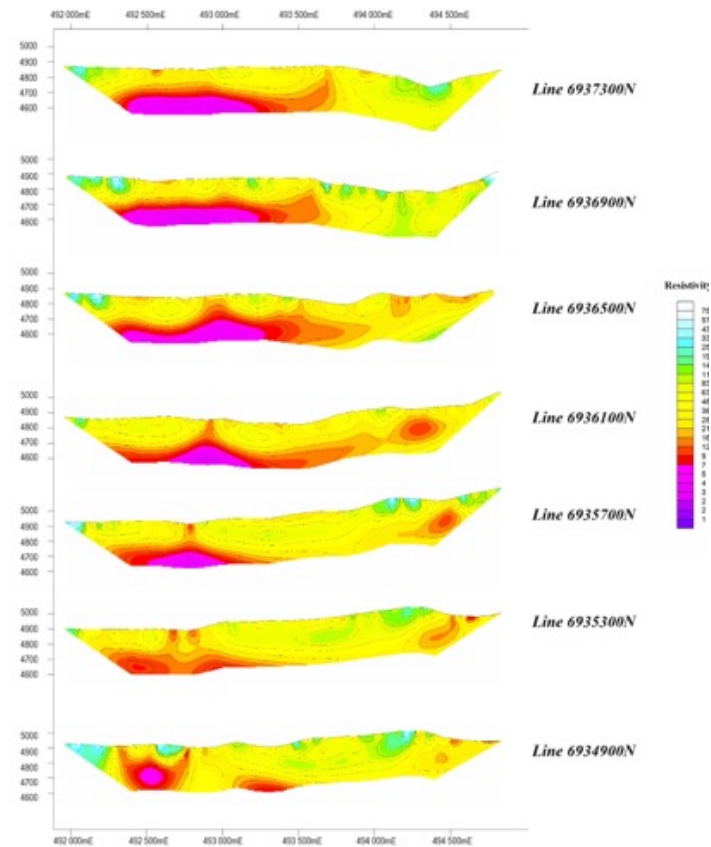


# CHILE GOLD EXPLORATION





# CHILE GOLD EXPLORATION



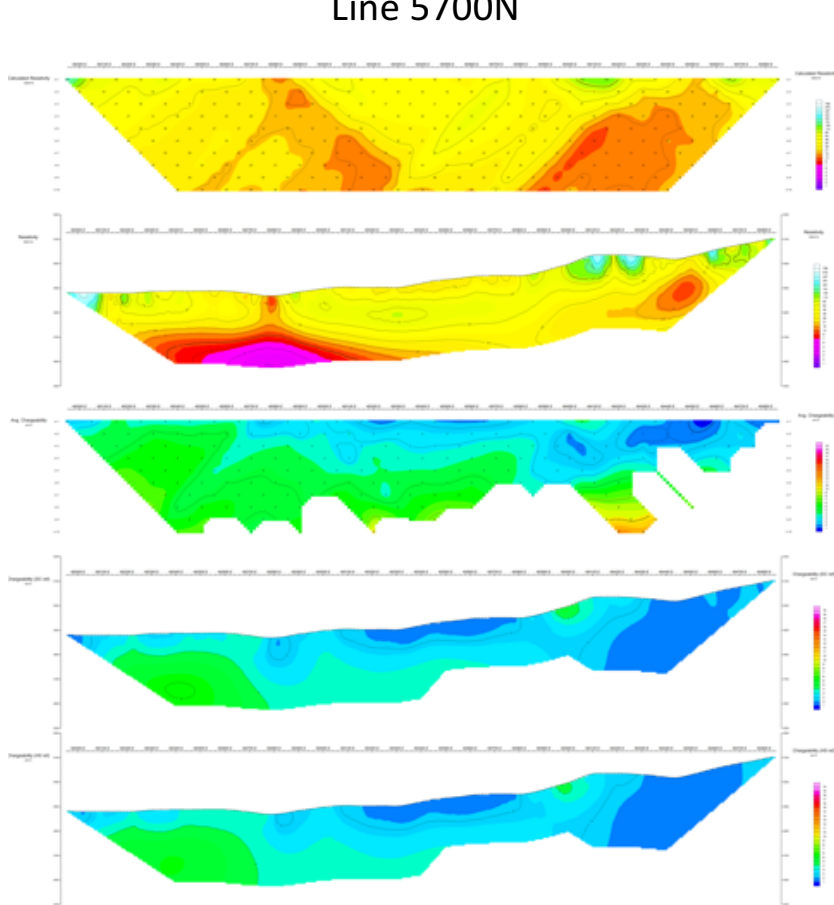
**Vadalita Project  
IP Resistivity Inversions**



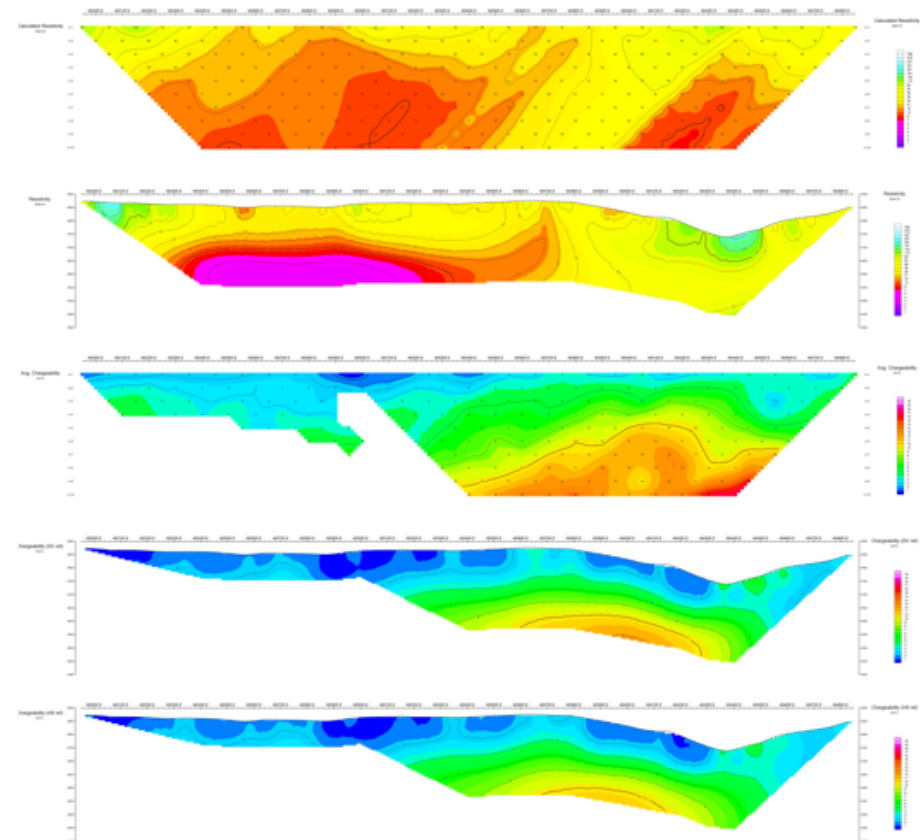
# CHILE GOLD EXPLORATION



Line 5700N



Line 7300N



# CHILE GOLD EXPLORATION



## PROGRAM

JANUARY – SURFACE PROGRAM – MAPPING, SOIL GEOCHEMISTRY, GEOPHYSICS

FEBRUARY – COMPLETE SURFACE PROGRAM, APPLY FOR DRILLING APPROVAL

MARCH – DRILLING

APRIL - DRILLING



# CHILE GOLD EXPLORATION



## **Issued Capital:**

**Listed Shares** 40,279,457 fully paid shares

**Listed Contributing Shares** 35,278,377; paid to \$0.03; \$0.03 to pay, no call before 31/12/2017

**Unlisted Options** 15,058,220 options, exercise price \$0.10, date 30/3/17

## **Directors:**

**Peter Thomas**

Chairman

**Greg Steemson**

Managing Director

**Gavin Rutherford** Non-Executive Director