



and Queensland's

Unlocking Victoria's Copper-Gold Potential

^

**RIU Explorer's Conference
February 2017**

Disclaimer

This presentation contains only an overview of Stavely Minerals Limited (“Stavely” or the “Company”) and its activities and operations. The contents of this presentation, including matters relating to the geology and exploration potential of the Company’s projects, may rely on various assumptions and subjective interpretations which it is not possible to detail in this presentation and which have not been subject to any independent verification.

This presentation contains a number of forward-looking statements. Known and unknown risks and uncertainties, and factors outside of the Company’s control, may cause the actual results, performance and achievements of the Company to differ materially from those expressed or implied in this presentation.

To the maximum extent permitted by law, Stavely does not warrant the accuracy, currency or completeness of the information in this presentation, nor the future performance of the Company, and will not be responsible for any loss or damage arising from the use of the information.

The information contained in this presentation is not a substitute for detailed investigation or analysis of any particular issue. Current and potential investors should seek independent advice before making any investment decision in regard to the Company or its activities.

STAVELY MINERALS

STAVELY
MINERALS

ASX Code – SVY

Share Price - \$0.14

Cash (31/12/16) - \$3.64M*

Shares on Issue – 120.2M

Market Cap - \$16.8M

Management ~50% equity

**Excludes Titeline Drilling agreement, Victorian Gov't co-funding and recent capital raising*

Directors

Bill Plyley

Non-executive Chairman

Chris Cairns

Managing Director

Jennifer Murphy

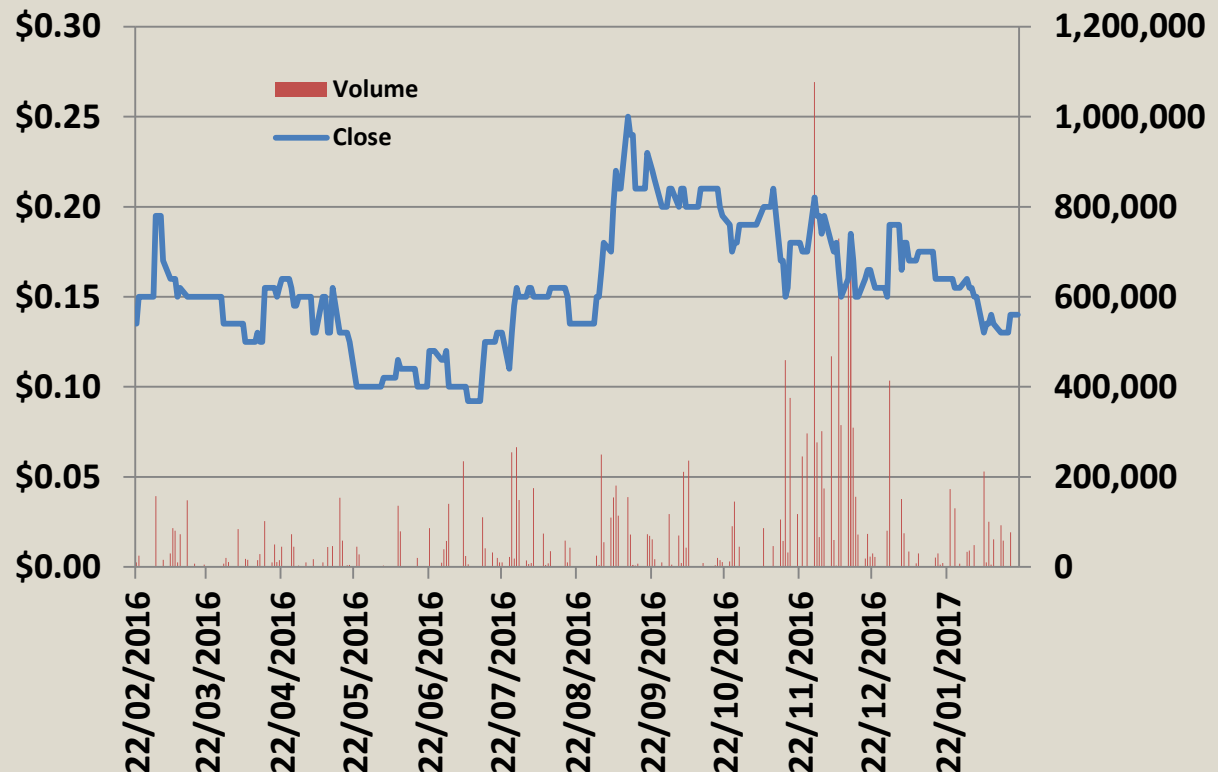
Technical Director

Peter Ironside

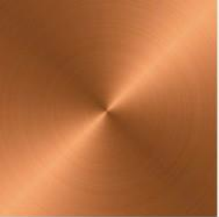
Non-executive Director

Amanda Sparks

Company Secretary

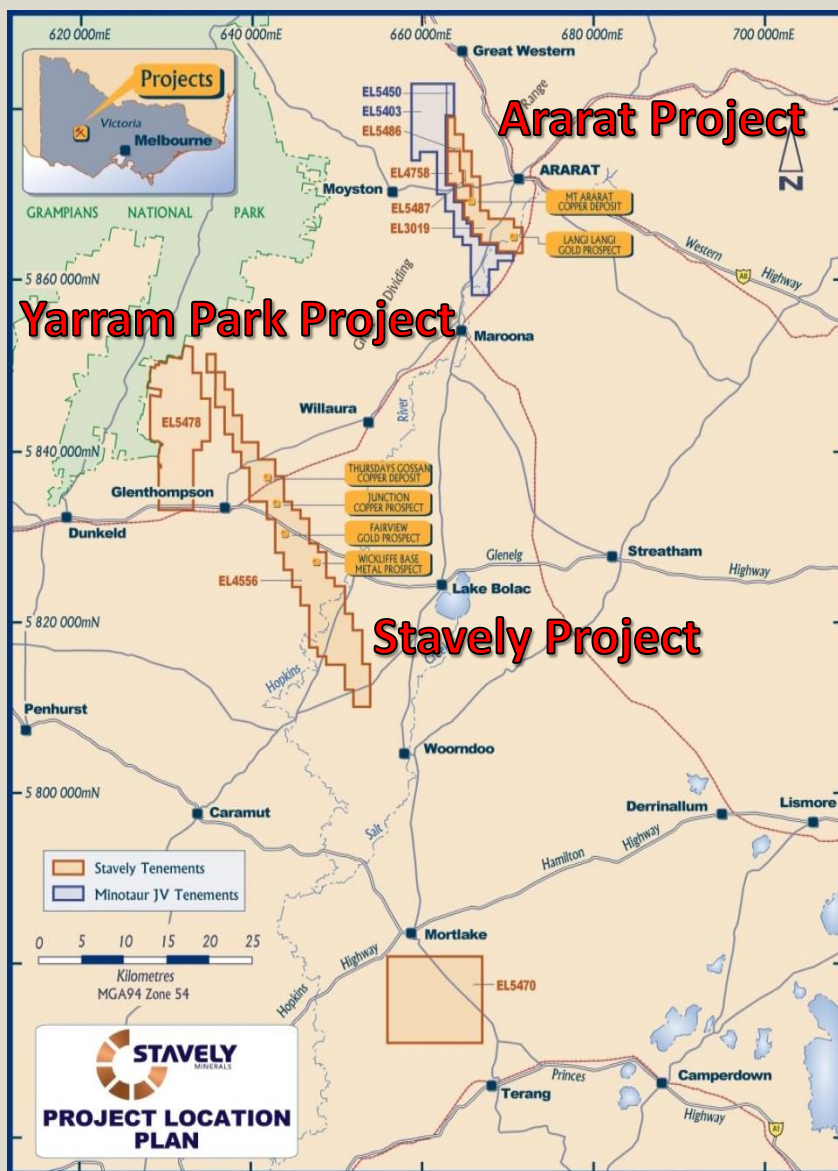


**\$2m share subscription agreement with Titeline Drilling Pty Ltd announced to the ASX on 7 October 2014*



PROJECTS

VICTORIAN PROJECT LOCATIONS



Victorian Projects

The Ararat Project is prospective for VMS base metals-gold and 'Stawell-style' gold mineralisation.

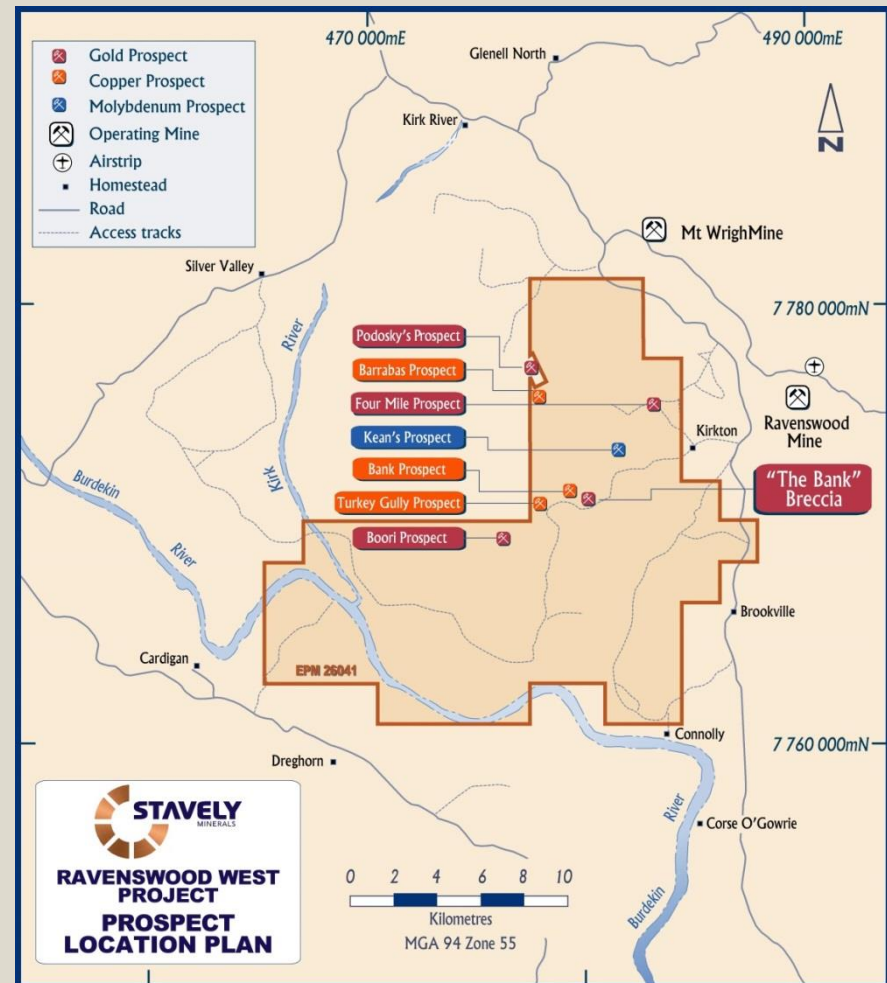
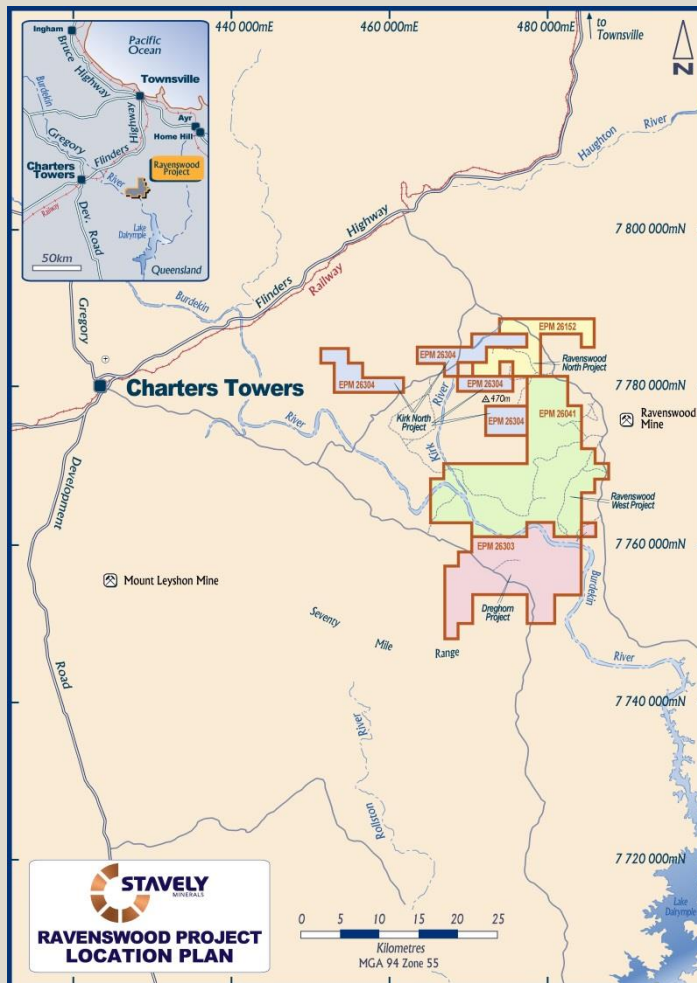
The Stavely Project is prospective for ancient porphyry copper-gold, VMS base metals-gold and intrusive related gold mineralisation.

The Yarram Park Project is prospective for ancient porphyry copper-gold and intrusive related gold mineralisation.

QUEENSLAND PROJECT LOCATION



The Ravenswood Project is prospective for porphyry copper-moly-gold, quartz-sulphide vein-hosted gold and breccia-hosted gold mineralisation.



At the **Ararat Project**, hosted in a Besshi-style VMS:

- Inferred Mineral Resources of 1.3Mt at 2.0% copper, 0.5 g/t gold, 0.4% zinc and 6 g/t silver for 30kt of contained copper

At the **Stavely Project** hosted in a secondary chalcocite-enriched blanket:

- Inferred Mineral Resources of 28Mt at 0.4% copper for 110kt of contained copper

¹ reported in compliance with JORC 2012, see ASX announcement 8 September 2015 and available from www.stavely.com.au

A decorative vertical bar runs along the left edge of the slide. It is divided into two sections: the top section is a solid orange color, and the bottom section is a light beige color with thin, horizontal white lines.

THURSDAY'S GOSSAN CHALCOCITE 'BLANKET'

STAVELY PROJECT

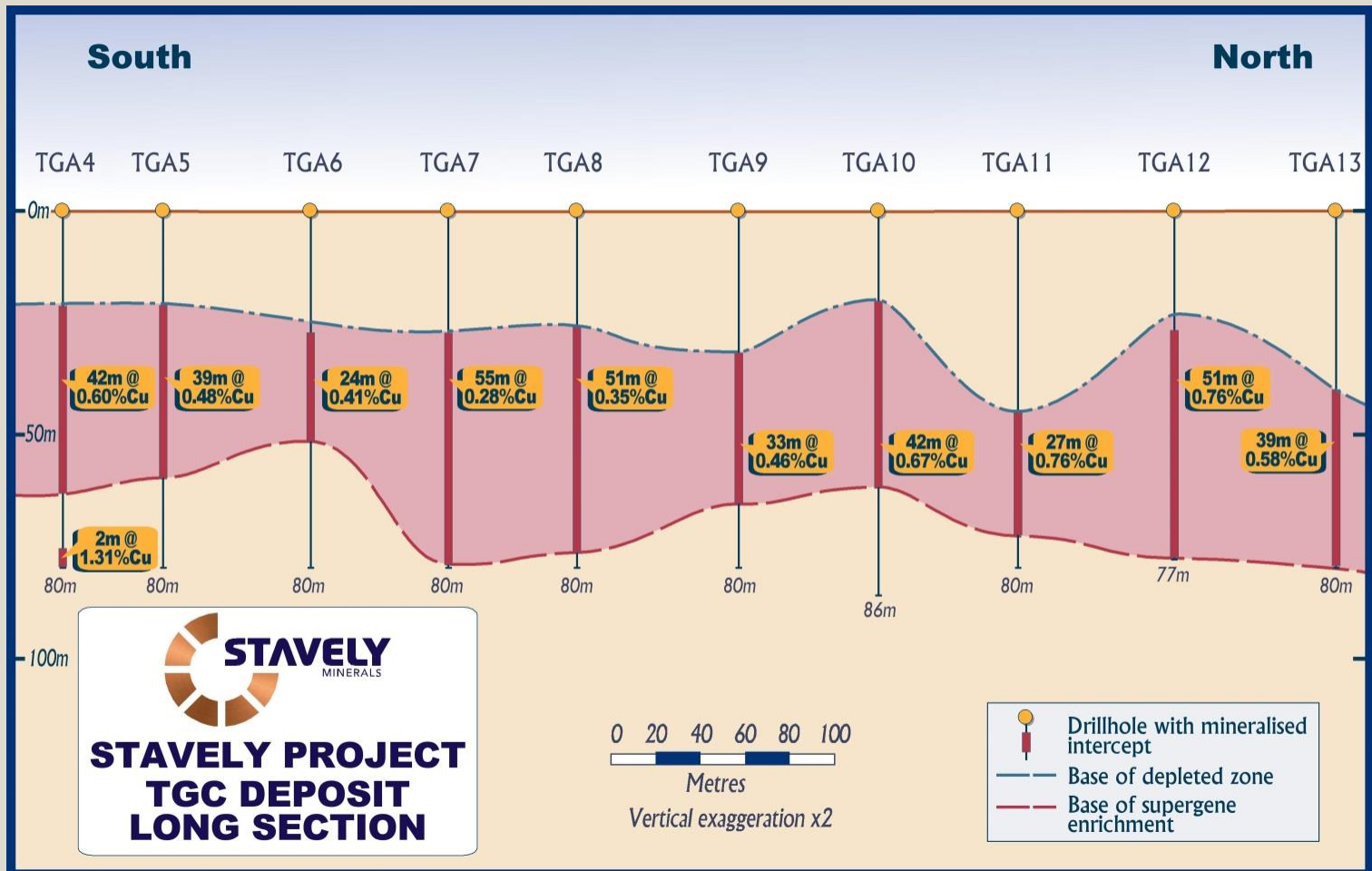


Inferred Mineral Resources of **28Mt** at **0.4% copper** for 110kt of contained copper

ARARAT PROJECT



Conceptual Study provided sufficiently positive economic outcomes to progress to a Scoping Study¹



¹ see ASX announcement 19 July 2016 and available from www.stavely.com.au

ARARAT PROJECT



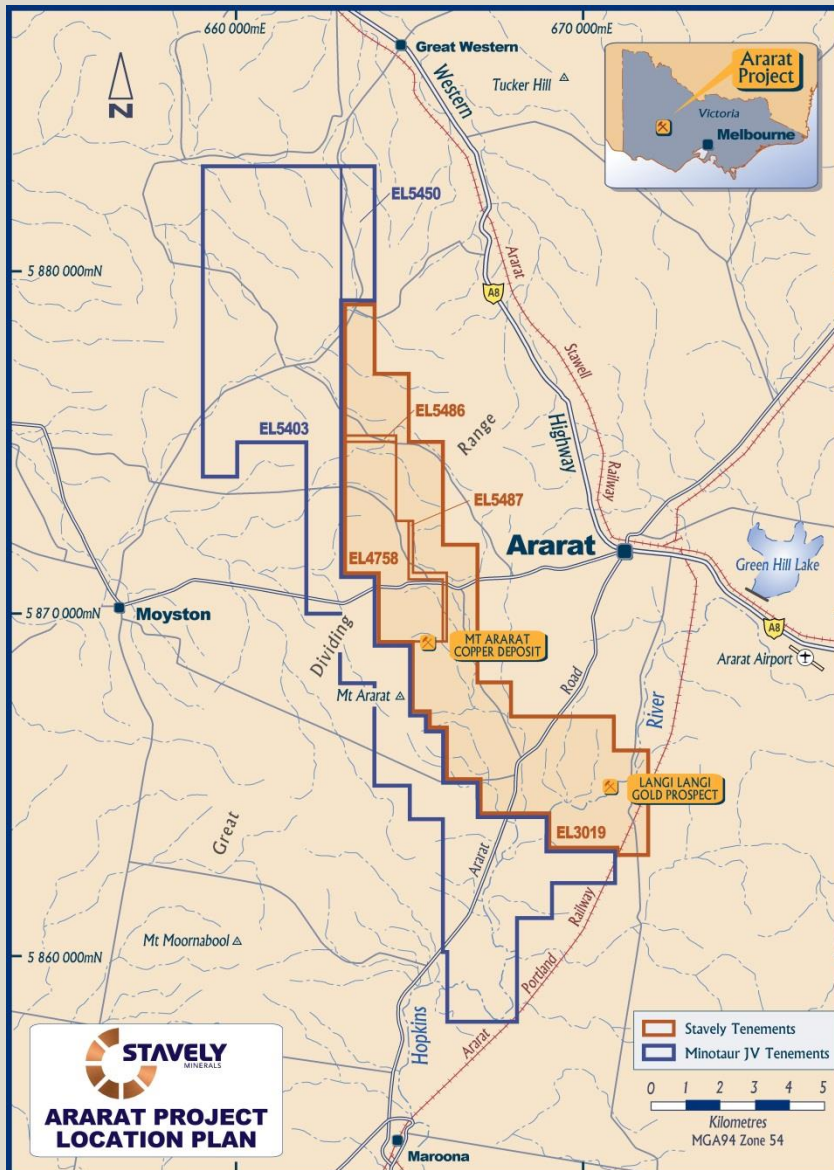
Conceptual Study provided sufficiently positive economic outcomes to progress to a Scoping Study¹

¹ see ASX announcement 19 July 2016 and available from www.stavely.com.au

A decorative vertical bar on the left side of the slide, consisting of a solid orange top section and a light beige bottom section with thin horizontal lines.

ARARAT PROJECT

ARARAT PROJECT



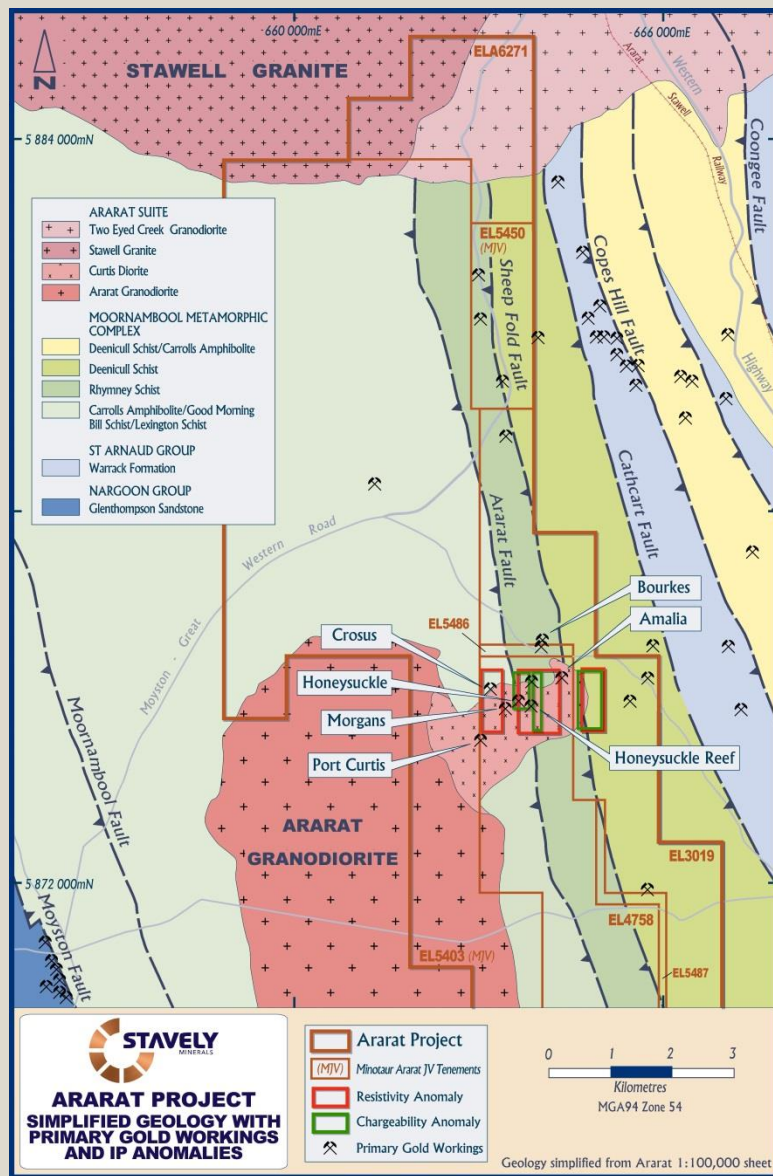
The Ararat Project

Hosts the:

Mt Ararat Besshi-style
copper-gold VMS

and 'Stawell-style' gold
targets

ARARAT PROJECT



Port Curtis Goldfield

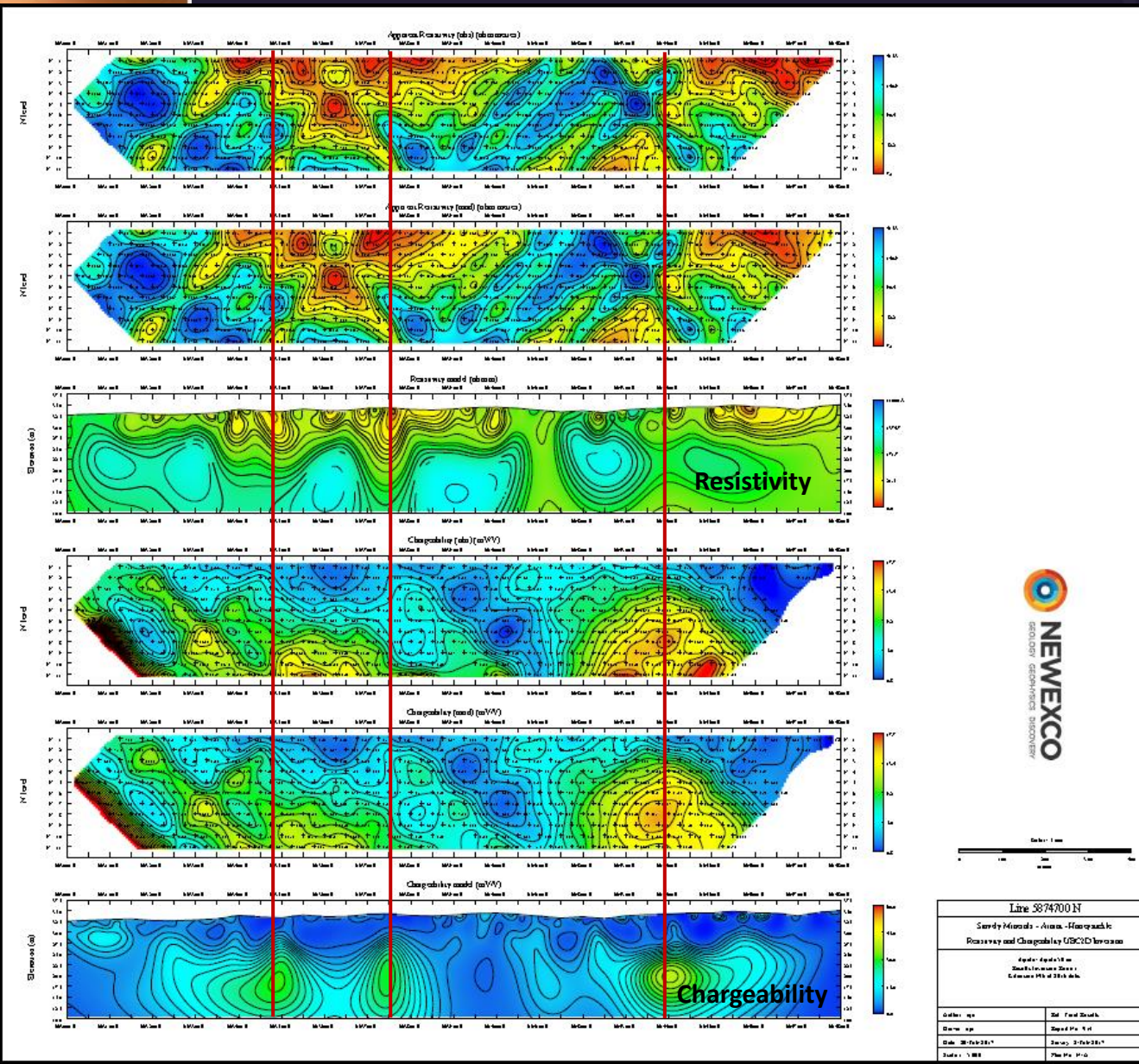
- ✓ Historic gold mines hosted in late-stage granite
- ✓ Recent IP geophysics has identified a number of chargeability / resistivity anomalies
- ✓ Surface rock chips to 5.33g/t gold

ARARAT PROJECT

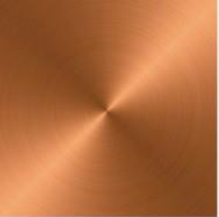


Port Curtis Goldfield

- ✓ Recent IP geophysics has identified a number of chargeability / resistivity anomalies
- ✓ Surface rock chips to 5.33g/t gold

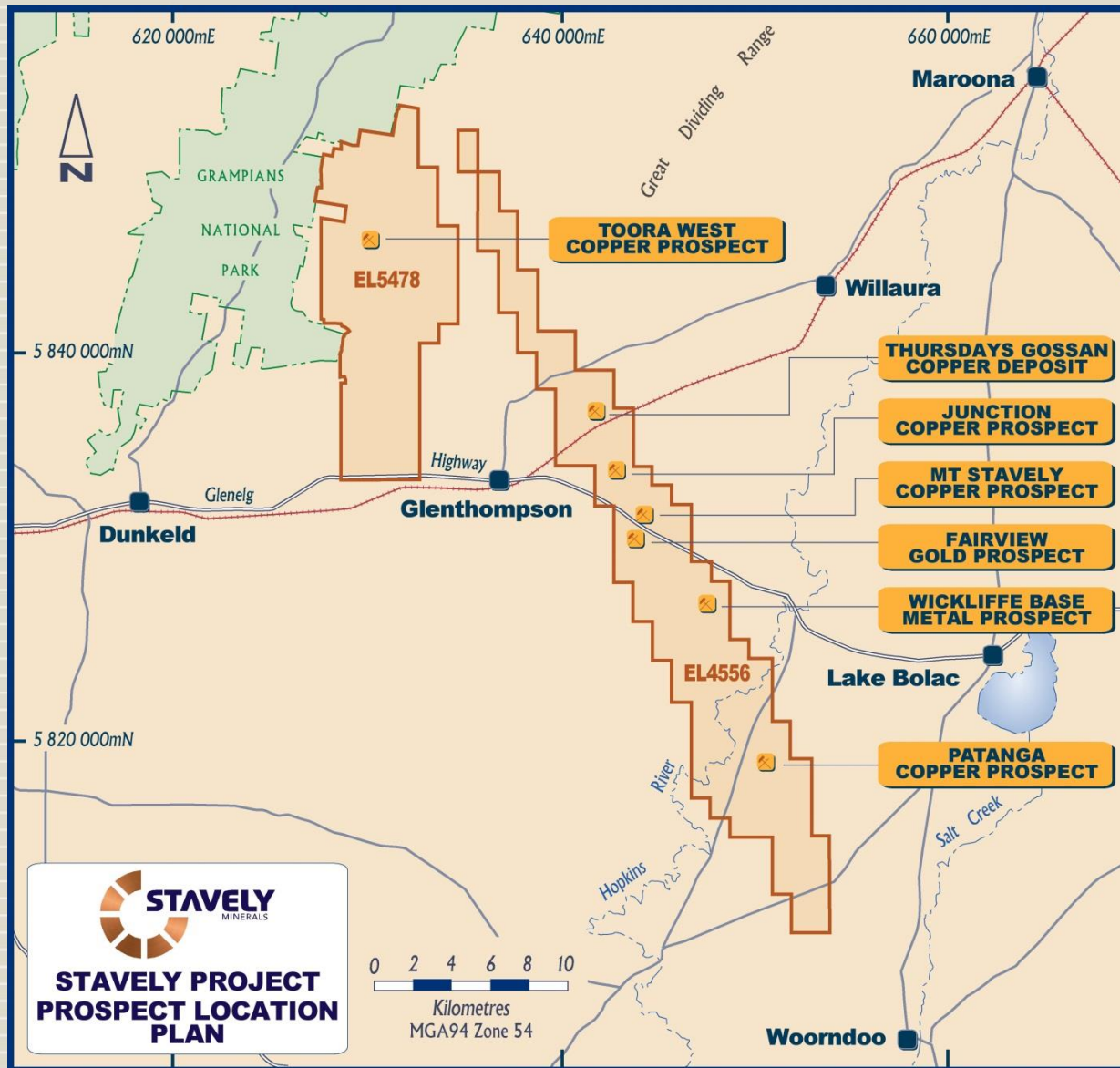


see ASX announcement 22/02/2017 and available from www.stavely.com.au

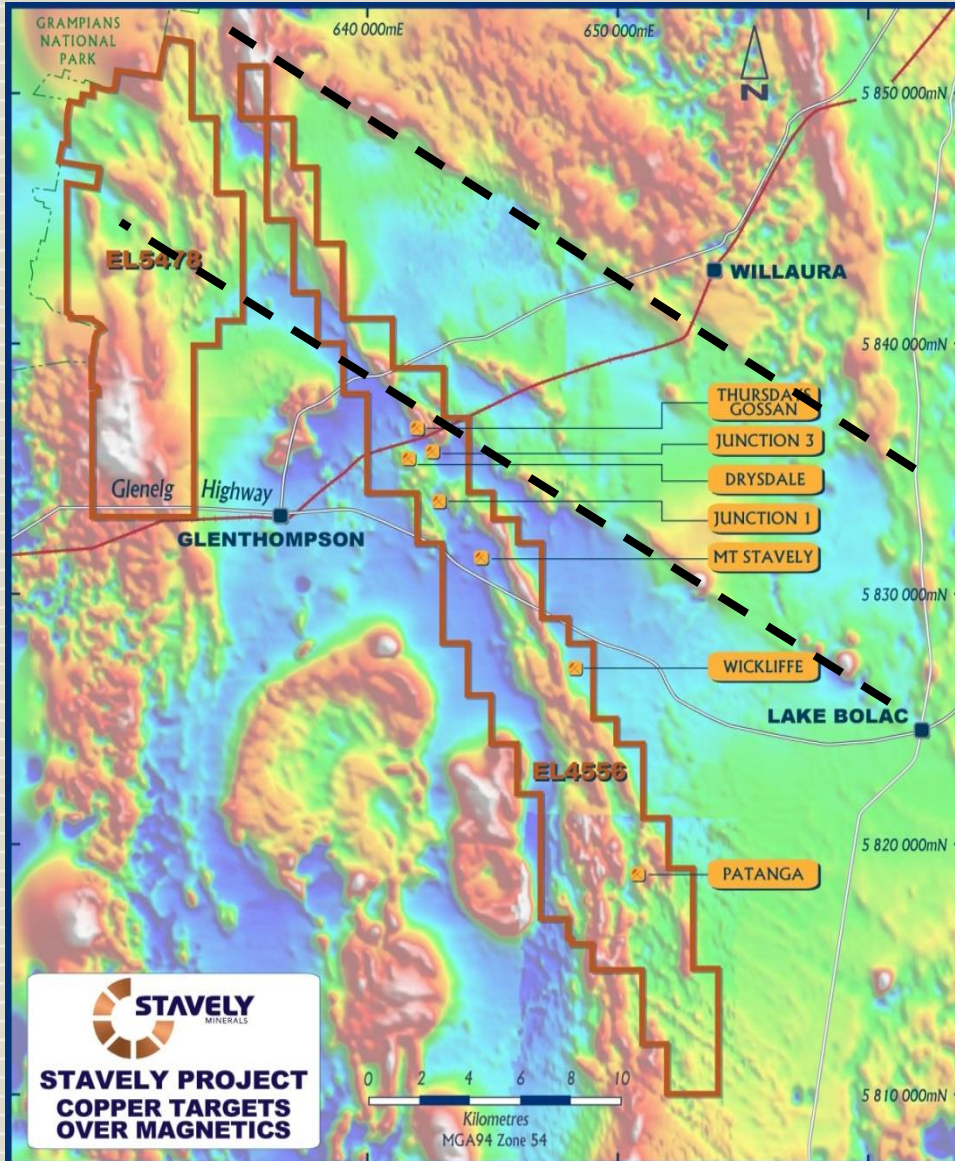


STAVELY PROJECT

STAVELY PROJECT



- Thursday's Gossan chalcocite enriched blanket – Inferred Mineral Resource of **28Mt at 0.4% copper** containing 110kt copper
- Thursday's Gossan porphyry
- Junction porphyry
- Mount Stavely porphyry
- Fairview gold prospect
- Wickliffe VMS prospect
- Patanga copper prospect
- Toora West porphyry prospect



Stavely Volcanic Arc

Similar structural setting to Cadia Valley

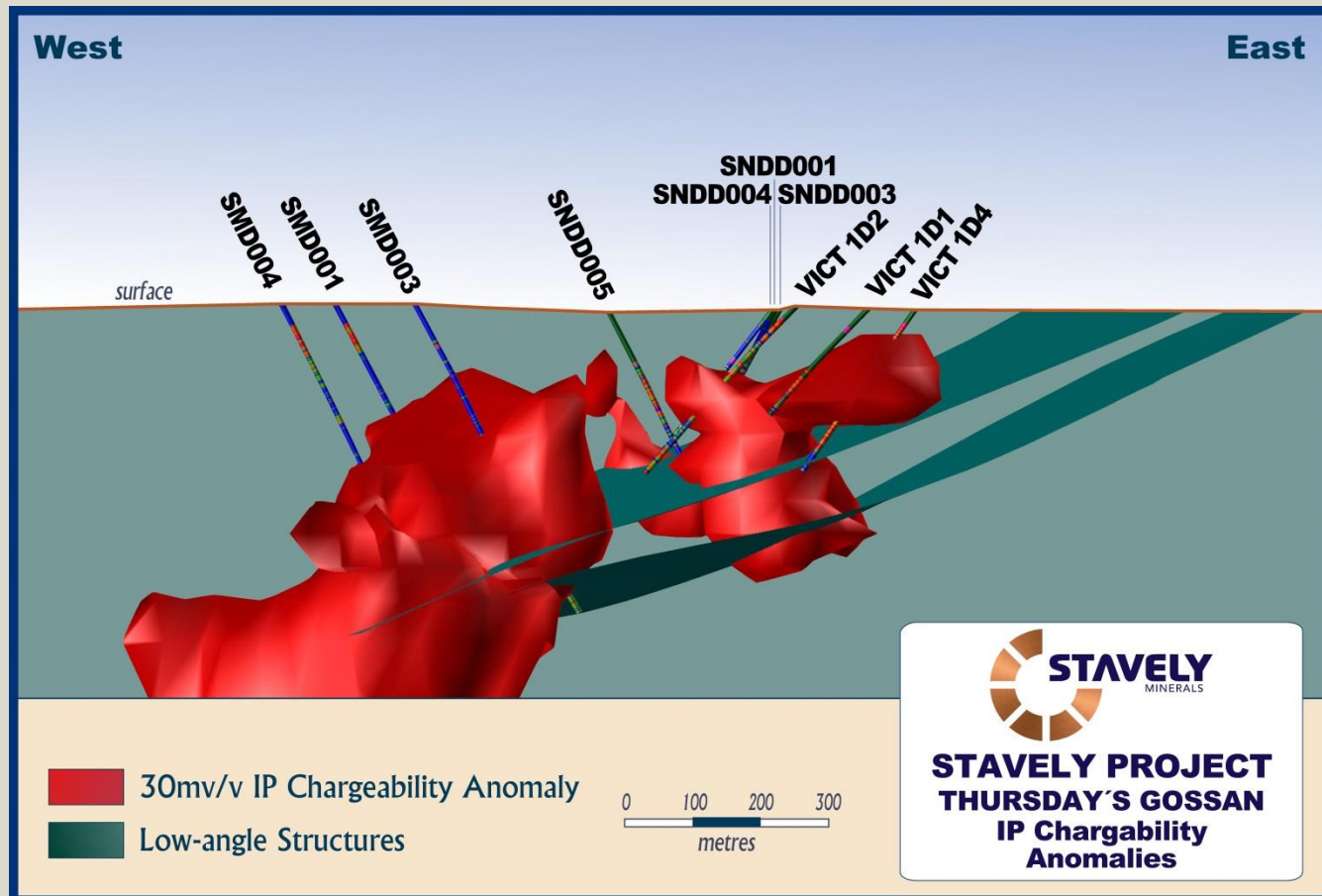
- ~N-S trending volcanic belt
- Major NW trending structures

STAVELY PROJECT

STAVELY
MINERALS

Thursday's Gossan Porphyry

2014 deep diamond drilling intercepted well-developed phyllic alteration (sericite-pyrite) which corresponded well with an IP chargeability anomaly

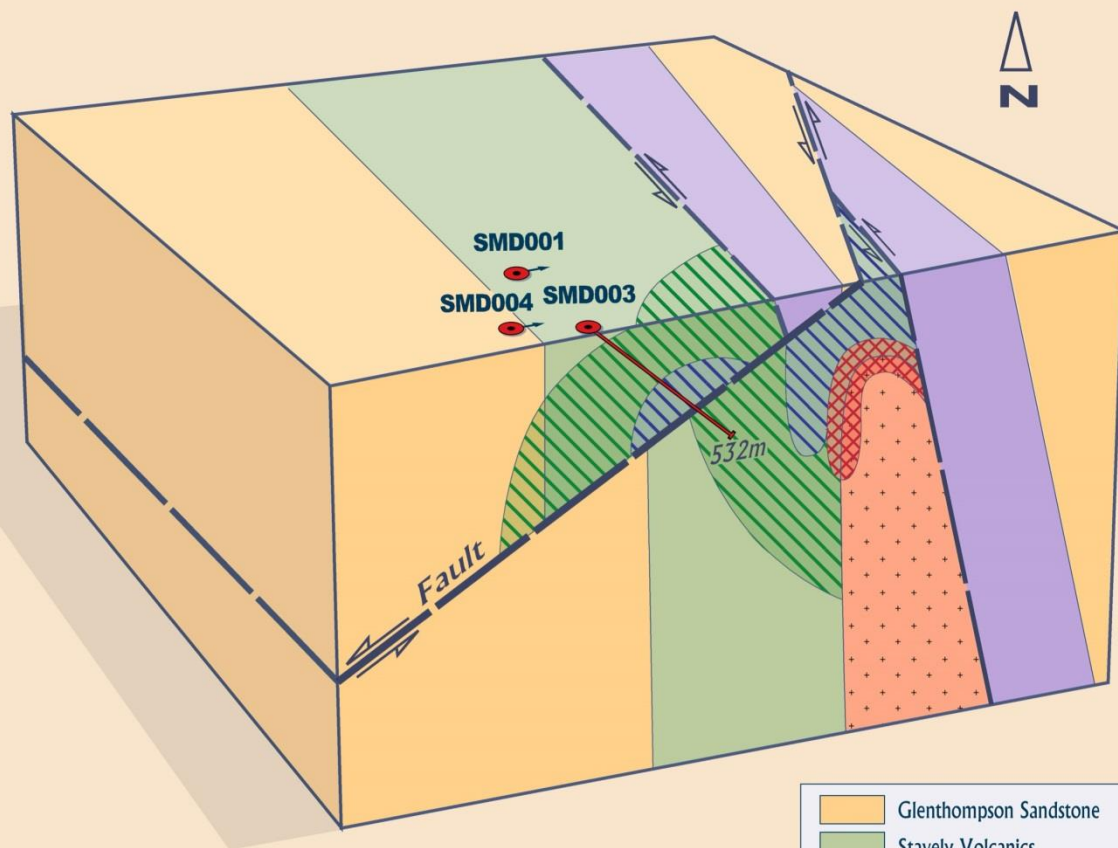


STAVELY PROJECT



Thursday's Gossan Porphyry

The three deep diamond drill holes identified a low-angle structural offset to the porphyry system



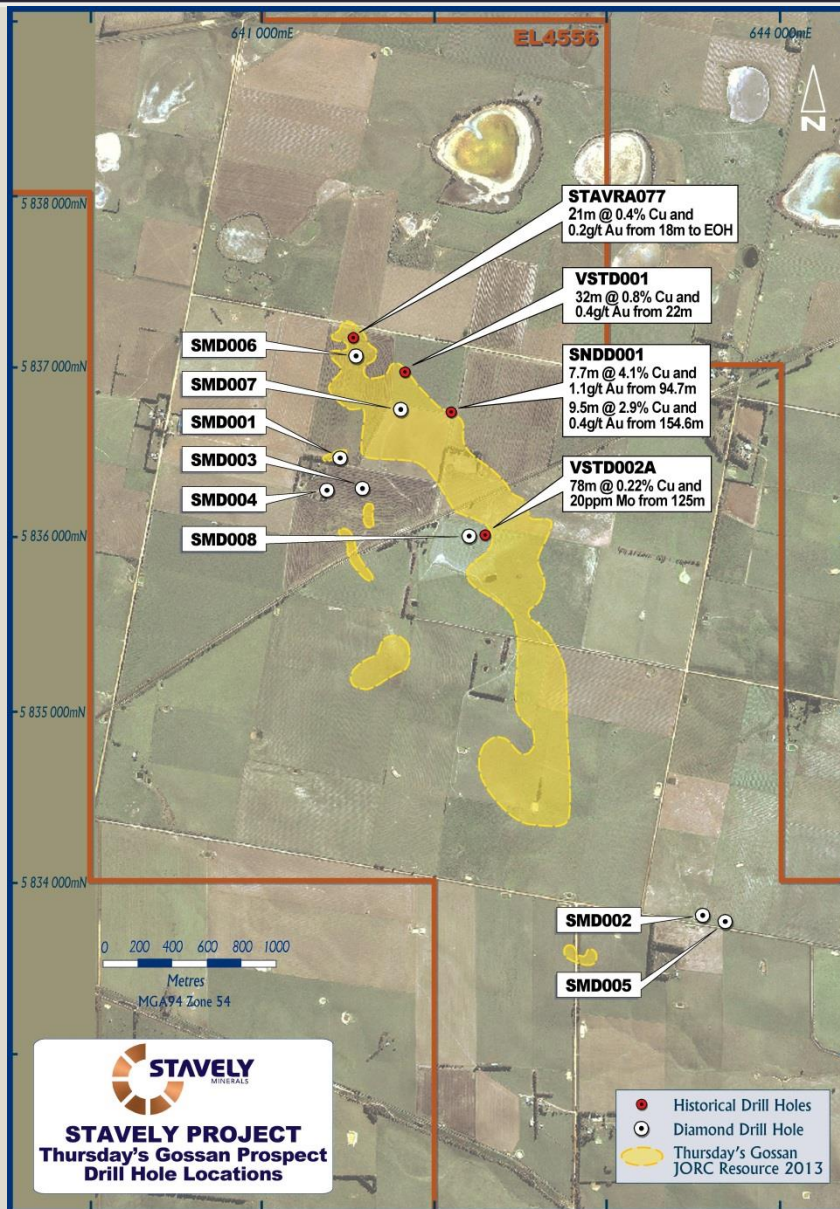
~ 500 metres



**Thursday's Gossan
Prospect 3D Model**

not to scale

STAVELY PROJECT

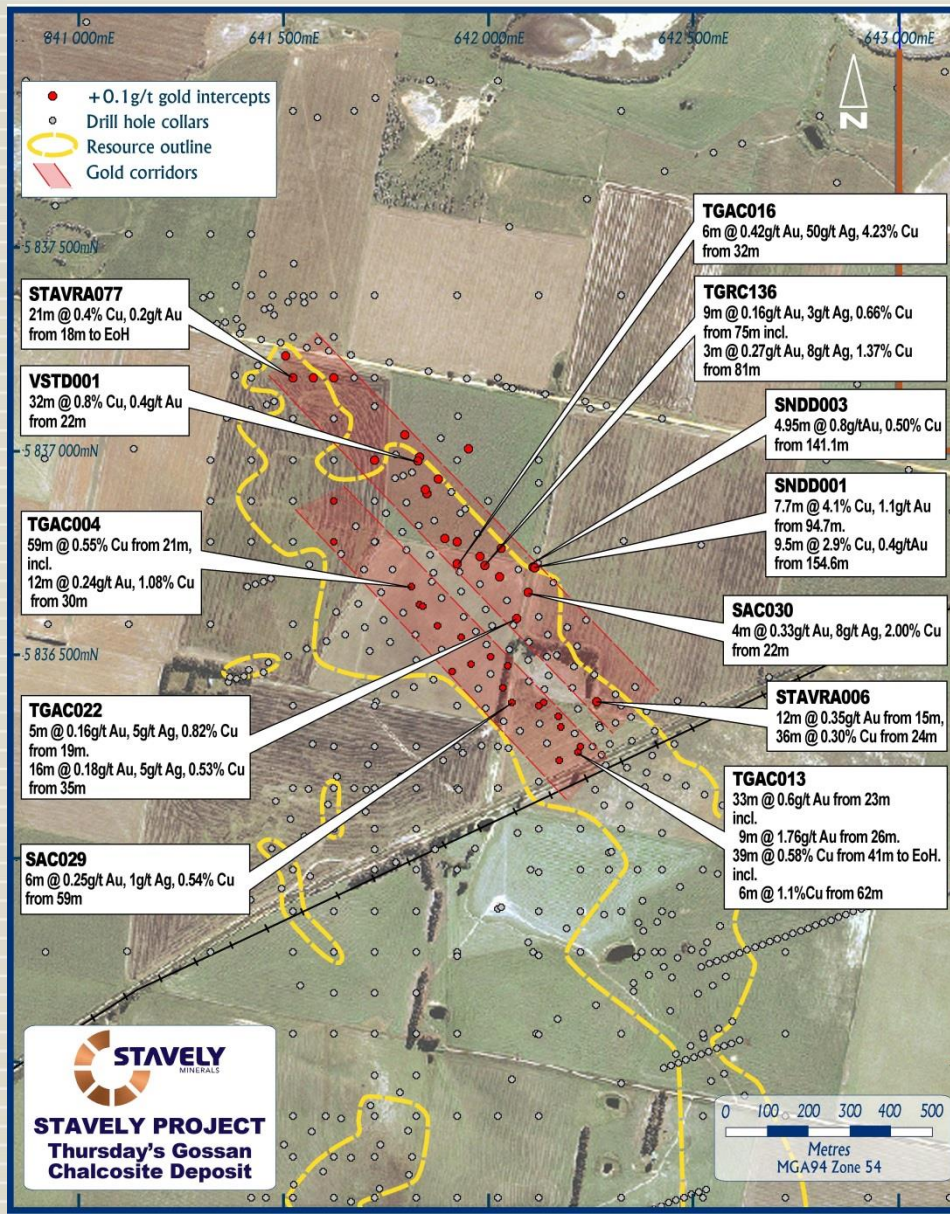


Thursday's Gossan Porphyry

Stavely Minerals recently completed a further 3 diamond drill holes testing below the low-angle structure.

Drill holes SMD006 and SMD007 were targeting zones of higher tenor copper mineralisation with associated gold.

STAVELY PROJECT



Thursday's Gossan Porphyry

- ✓ It is now recognised that there are two parallel zones of near-surface high-tenor copper mineralisation with associated silver and gold....
- ✓ And, these zones correspond to the near-surface expression of low-angle structures hosting sulphidic porphyry 'D' veins

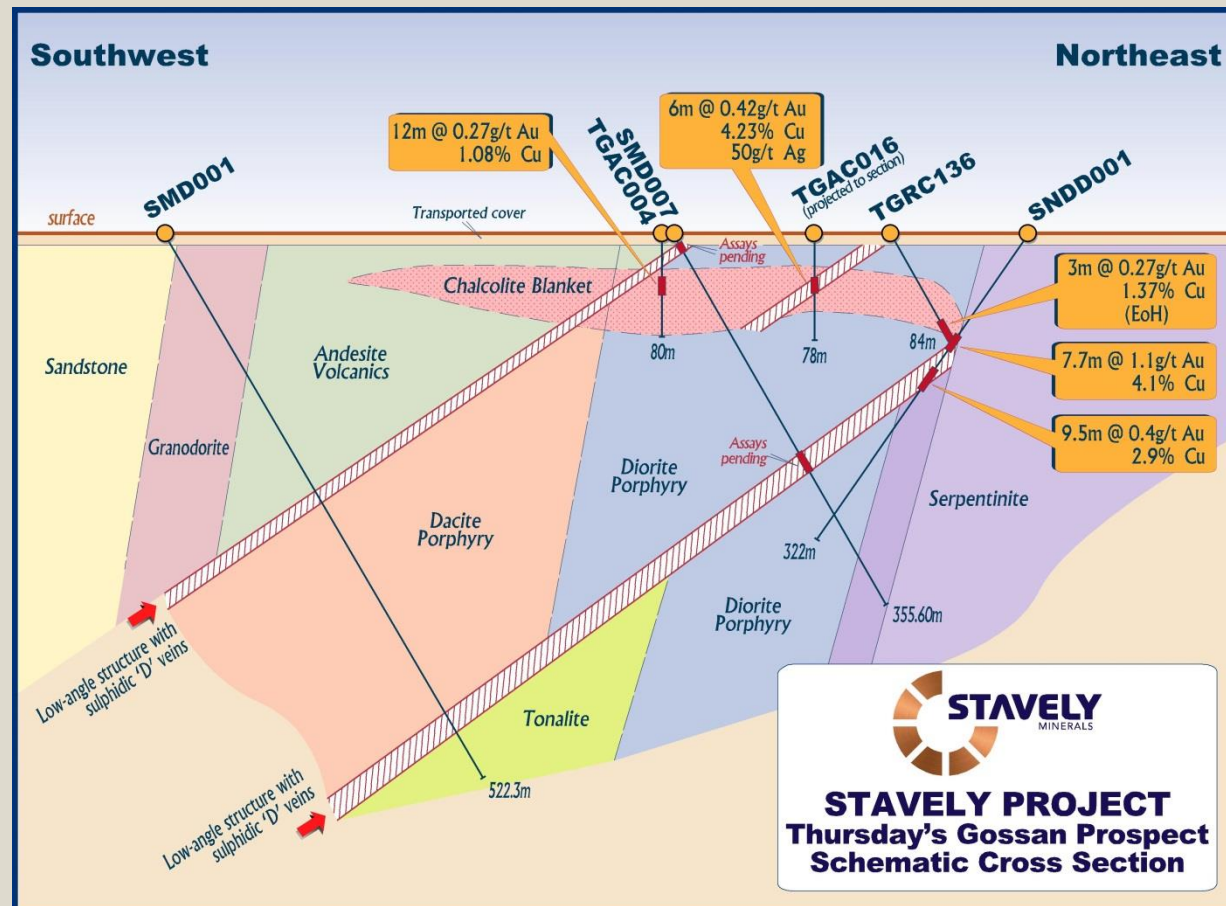
see ASX announcement 22/02/2017 and available from www.stavely.com.au

STAVELY PROJECT

STAVELY
MINERALS

Thursday's Gossan Porphyry

High tenor copper, silver and gold grades occur where the low-angle structures with sulphidic porphyry 'D' veins approach surface



Thursday's Gossan Porphyry

High tenor copper, silver and gold grades occur where the low-angle structures with sulphidic porphyry 'D' veins approach surface

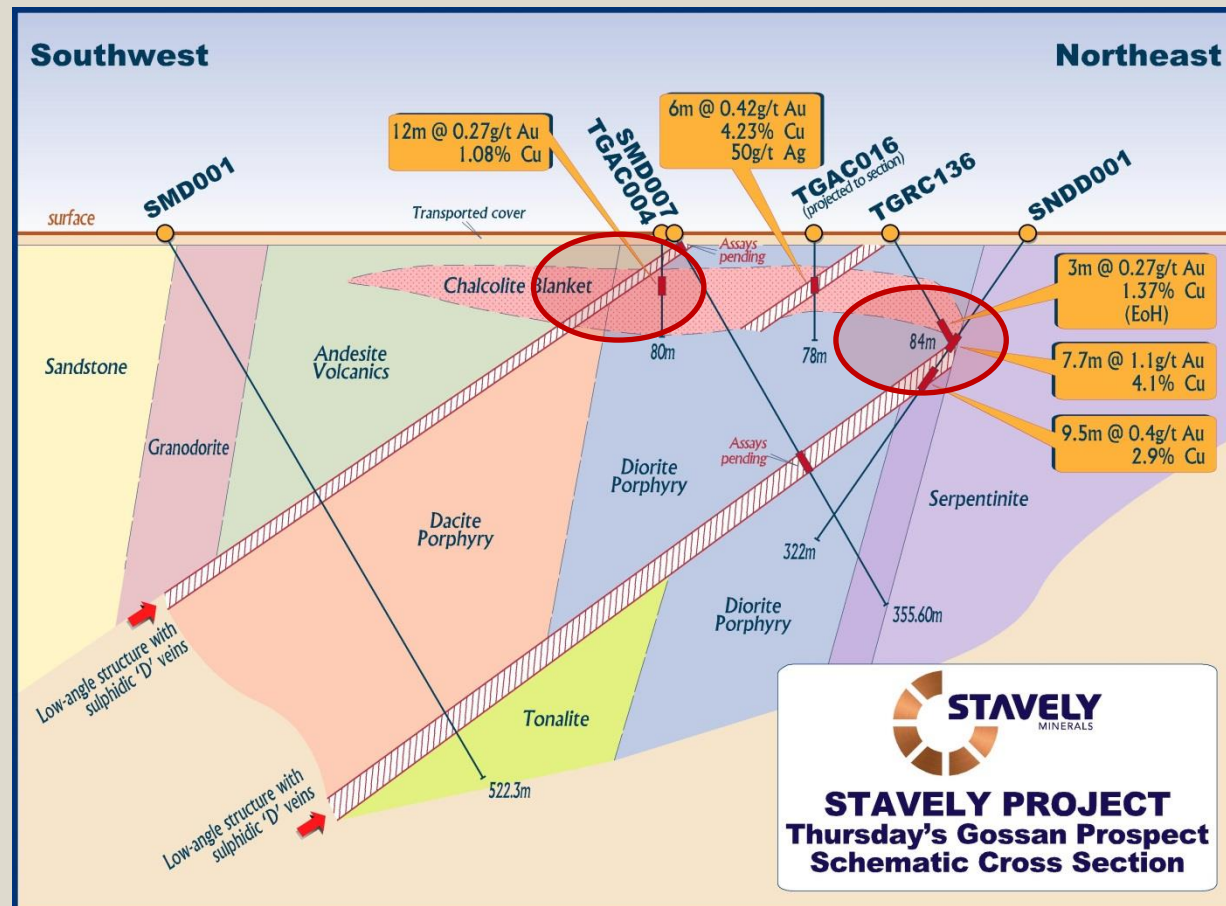


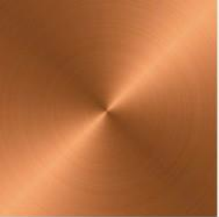
STAVELY PROJECT

STAVELY
MINERALS

Thursday's Gossan Porphyry

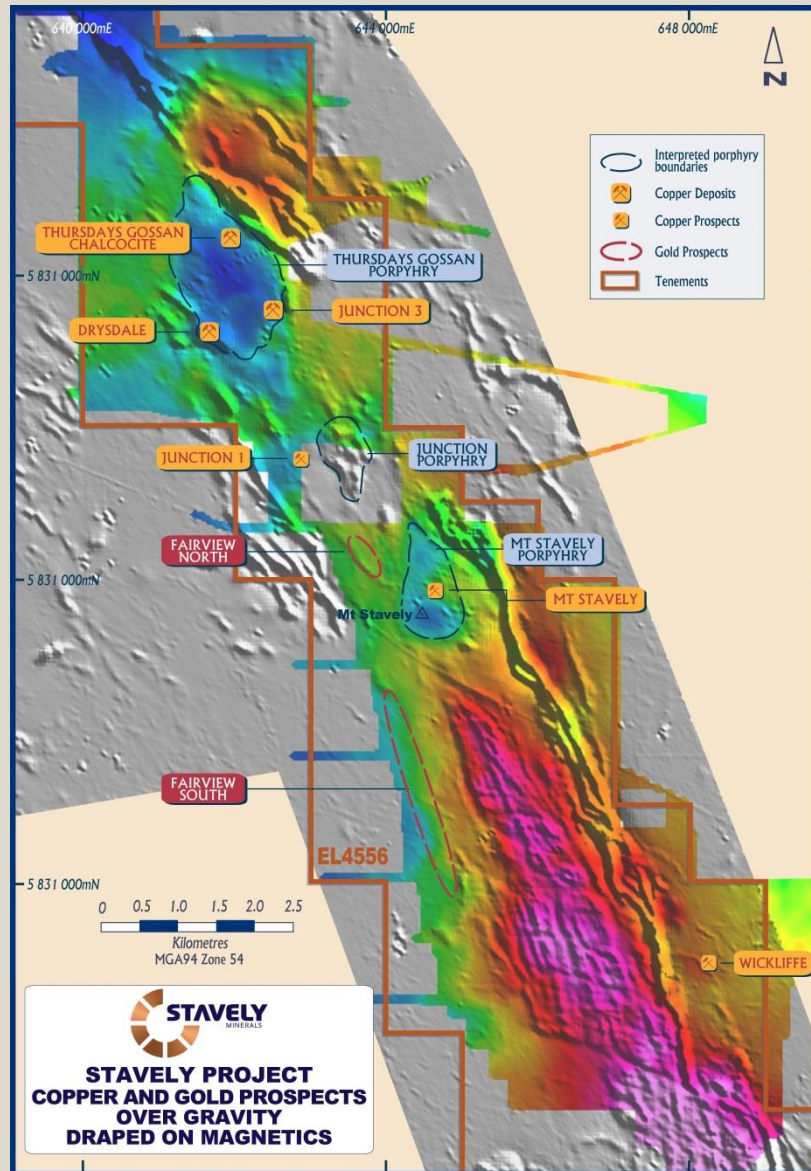
Planned RC drilling to target these high-tenor copper, silver and gold zones – potential for material impact on Mineral Resources update given **NO** silver and gold ever estimated within the Mineral Resource





MOUNT STAVELY AND FAIRVIEW

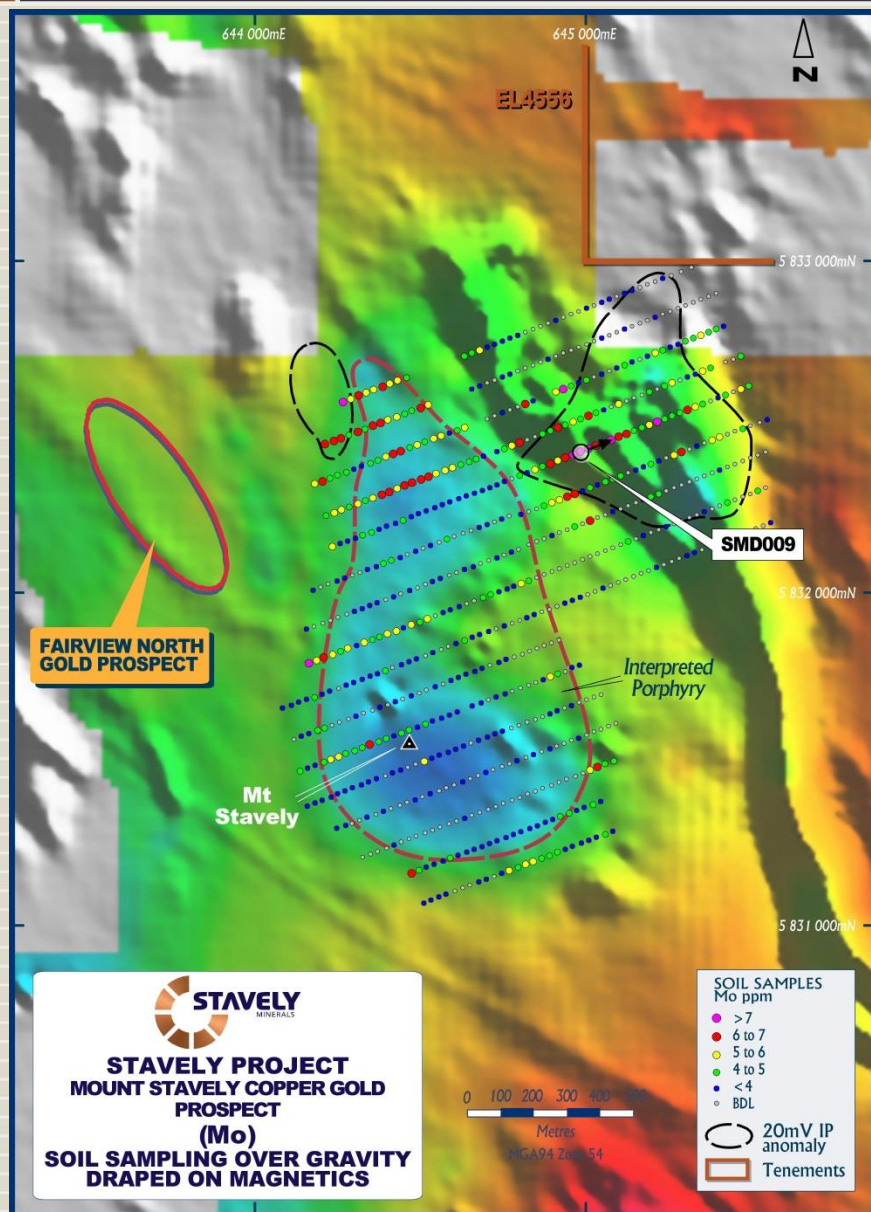
STAVELY PROJECT



Mount Stavelly Porphyry and Fairview Gold

- ✓ Interpreted buried porphyry reflected in pronounced gravity low
- ✓ 5km of peripheral mesothermal to epithermal gold associated with quartz-sulphide veins (adularia noted)

STAVELY PROJECT



Mount Stavely Porphyry

- ✓ Inferred buried porphyry reflected in pronounced gravity low
- ✓ IP chargeability anomaly on NE margin
- ✓ Coincident molybdenum soil geochemistry anomaly (should indicate the centre of porphyry-style mineralisation)
- ✓ Also highest gold result at 49ppb
- ✓ **Victorian Government co-funding for one diamond drill hole to test, previously undrilled**

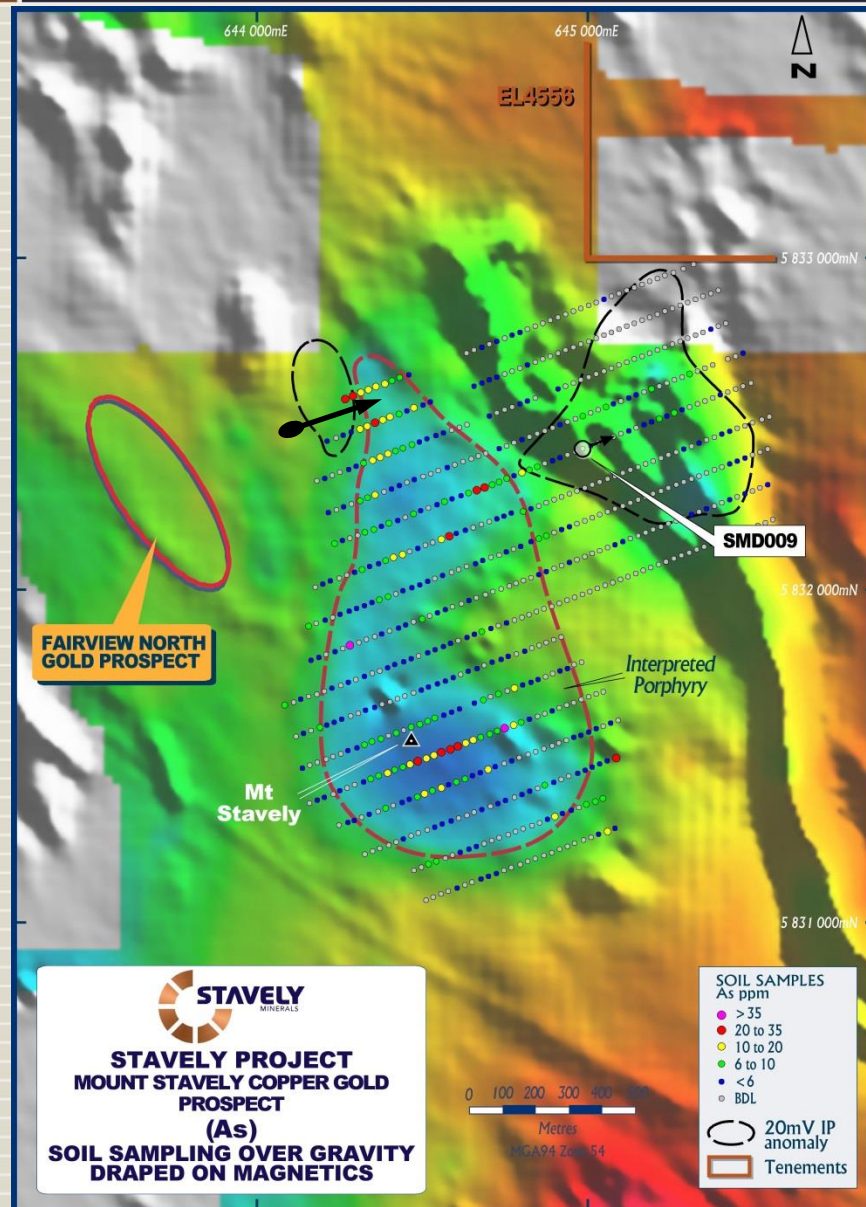
Mount Stavely Drilling

- ✓ Intercepted 31.4 m of polymict breccia displaying multiple phases of sulphide mineralisation
- ✓ Assays pending



STAVELY PROJECT

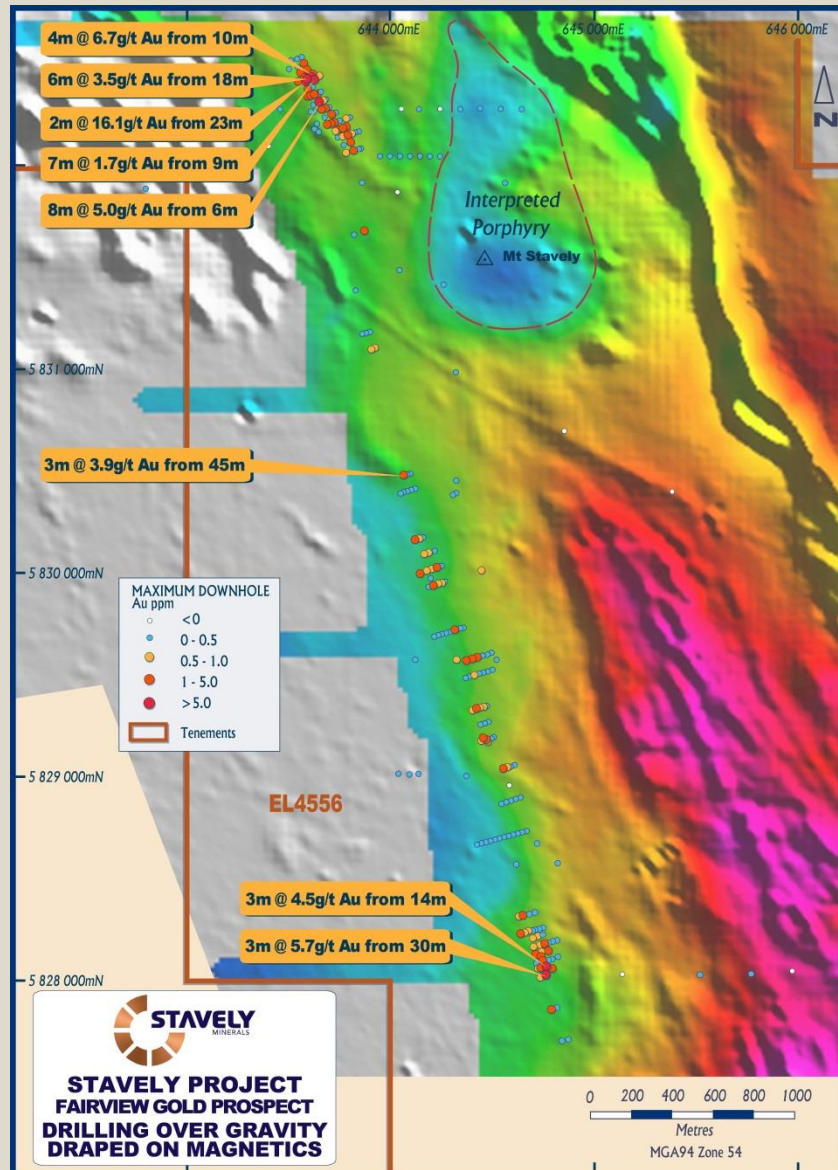
STAVELY
MINERALS



Mount Stavelly Porphyry

- ✓ Given the polymict breccia with multiple phases of sulphide mineralisation seen in SMD009, an additional hole is planned to test the other IP chargeability anomaly on the NW side of the Mount Stavelly gravity low
- ✓ Coincident molybdenum and arsenic soil geochemistry

STAVELY PROJECT



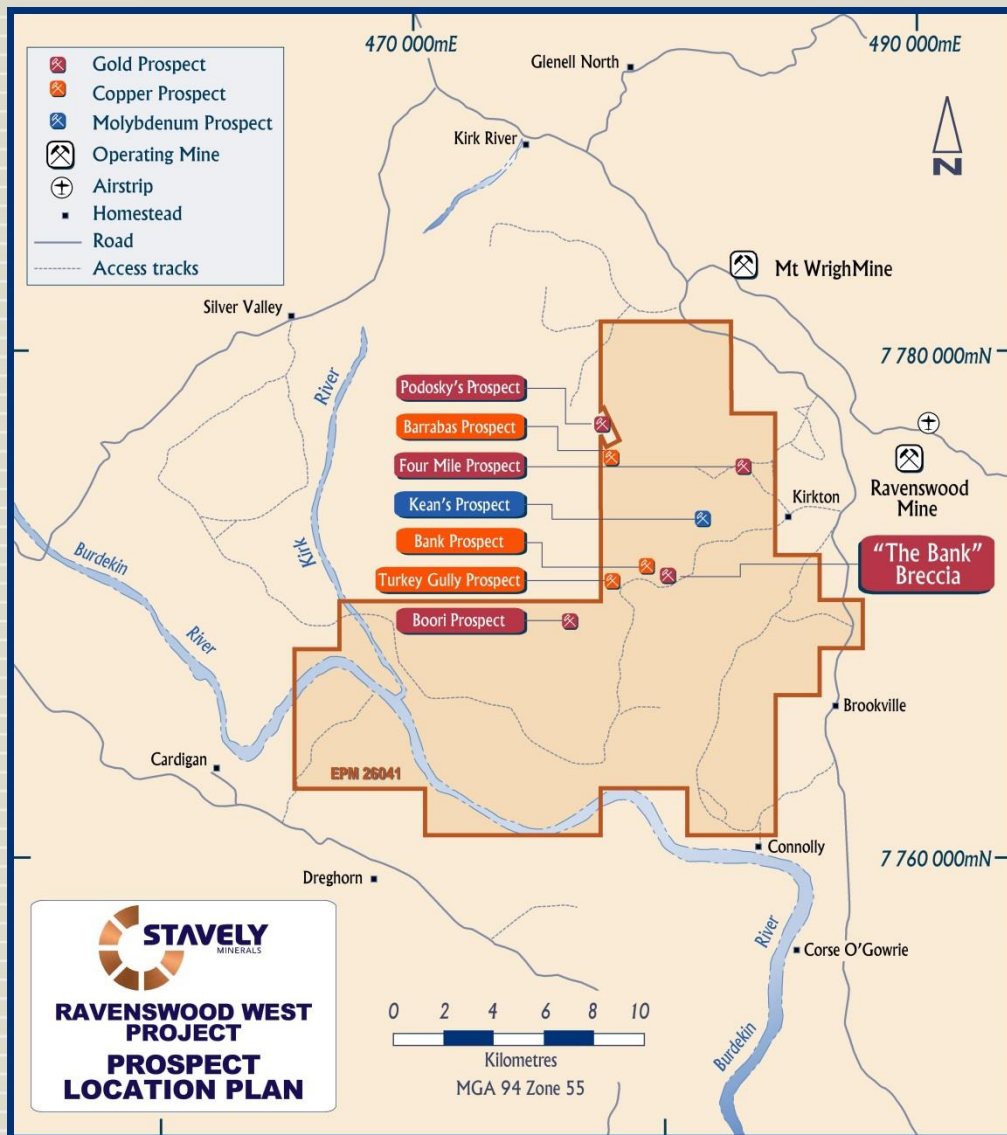
Fairview Gold Prospect

- ✓ 5km strike of mesothermal to epithermal quartz-sulphide vein related gold mineralisation
- ✓ Previous drilling intercepts including:
 - **2.5m at 17.4 g/t gold** from 28m drill depth
 - **2m at 16.1 g/t gold** from 23m drill depth
 - **4m at 6.7 g/t gold** from 10m drill depth
 - **8m at 5.0 g/t gold** from 6m drill depth
- ✓ **One diamond drill hole planned to test ladder vein interpretation**

A decorative vertical bar runs down the left side of the slide. It is divided into two sections: the top section is a solid orange color, and the bottom section is a light beige color with thin, horizontal white lines.

RAVENSWOOD PROJECT (QLD)

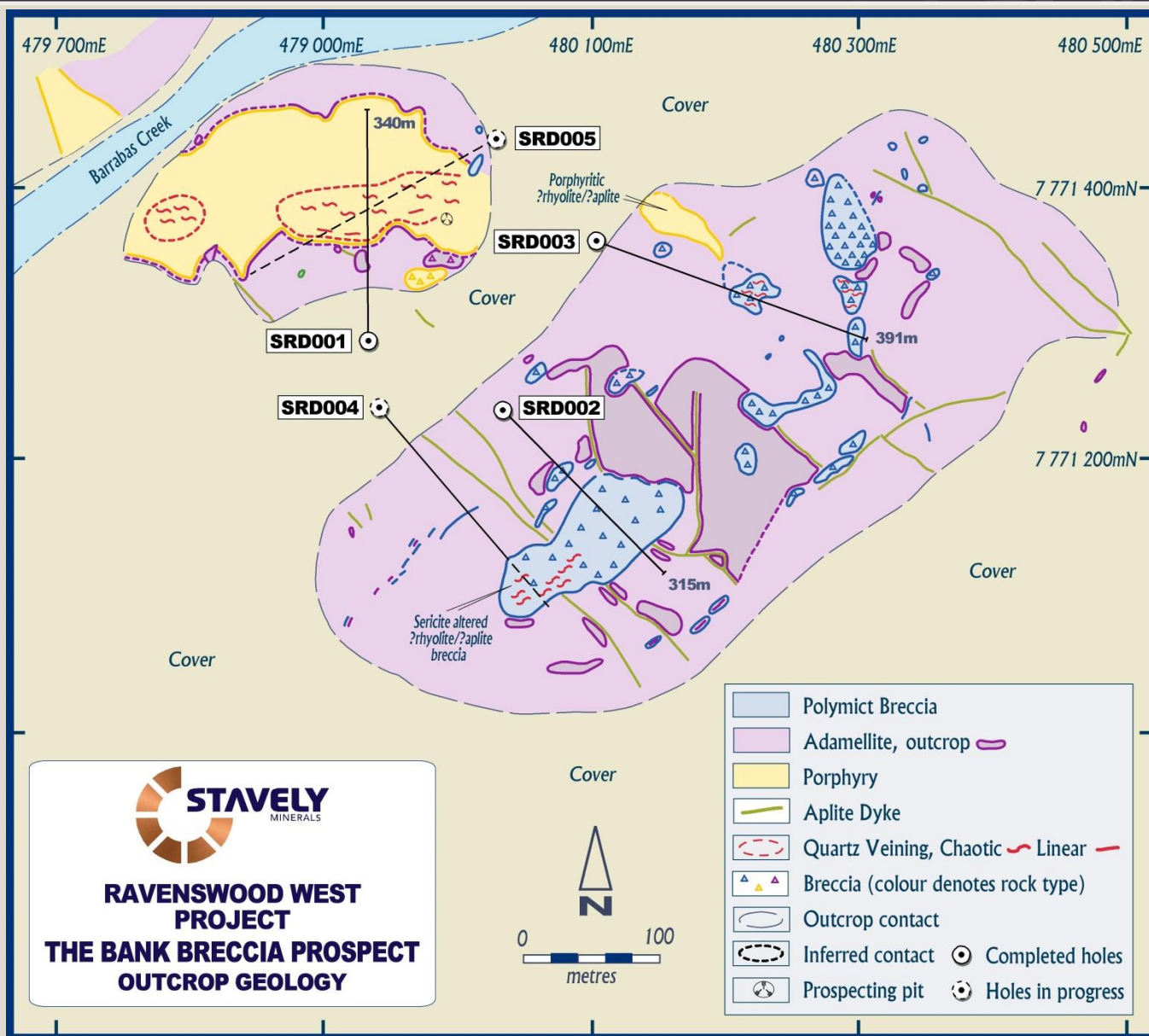
RAVENSWOOD PROJECT



Ravenswood Project

- ✓ Adjacent to the Ravenswood mining centre - ~4Moz produced
- ✓ 4 x porphyry copper / moly prospects
- ✓ 3 x mesothermal vein hosted gold prospects
- ✓ 'The Bank' breccia pipe

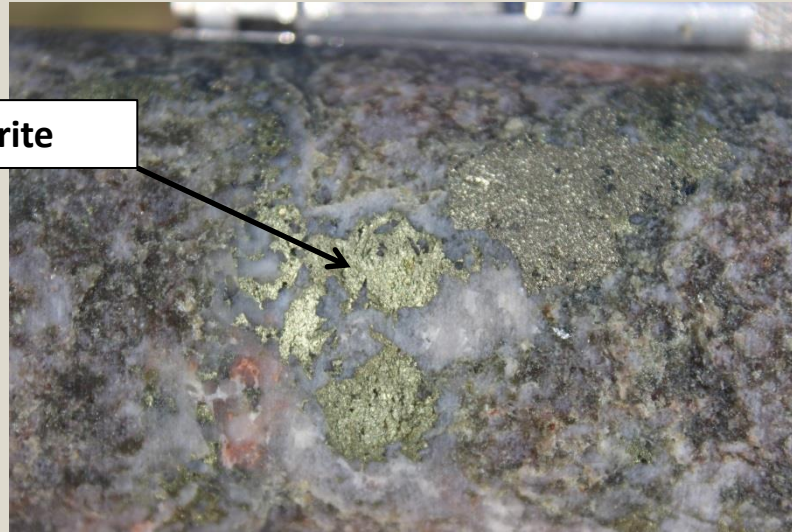
RAVENSWOOD PROJECT



RAVENSWOOD PROJECT - Drilling



Chalcopyrite



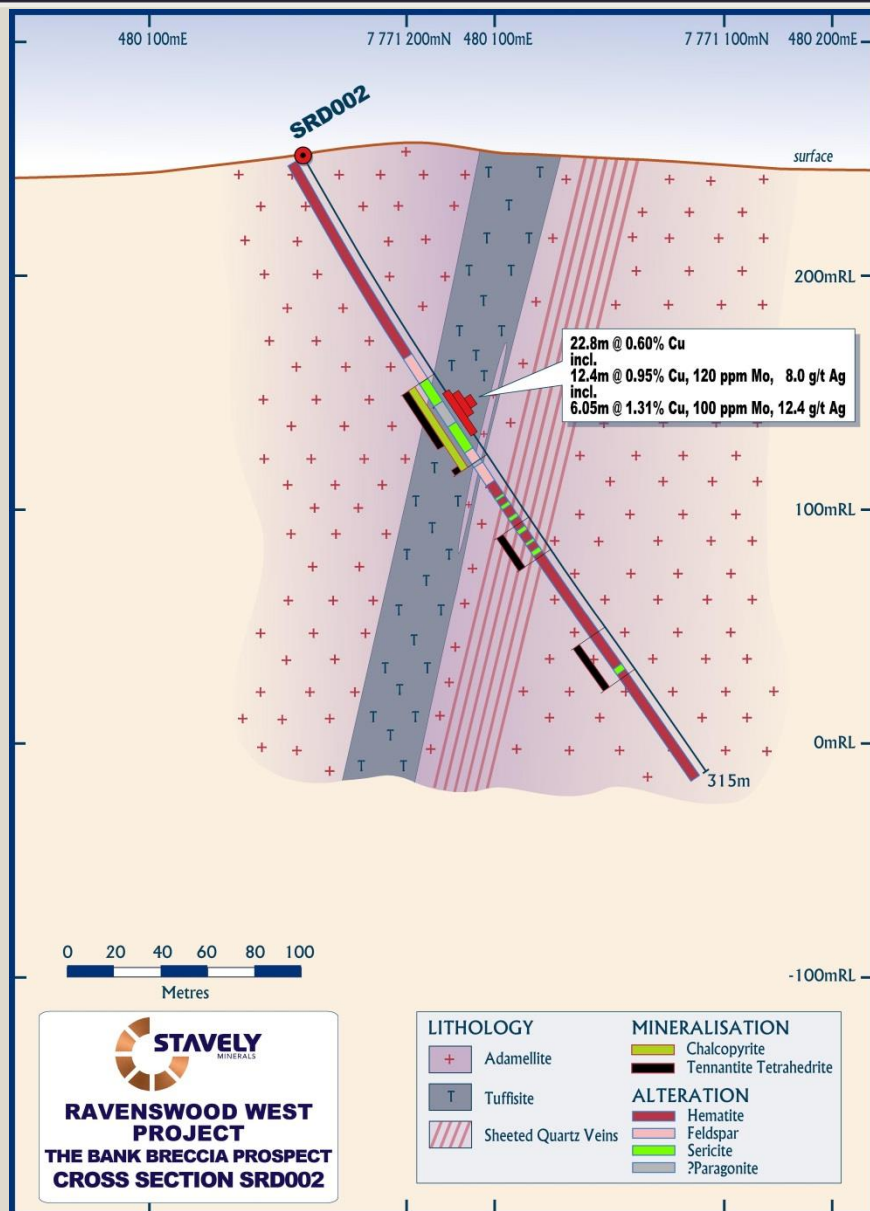
SRD002 124.5m pyrite / chalcopyrite mineralisation

Chalcopyrite



SRD002 129m – crackle breccia - silica, white sericite alteration, chalcopyrite mineralisation

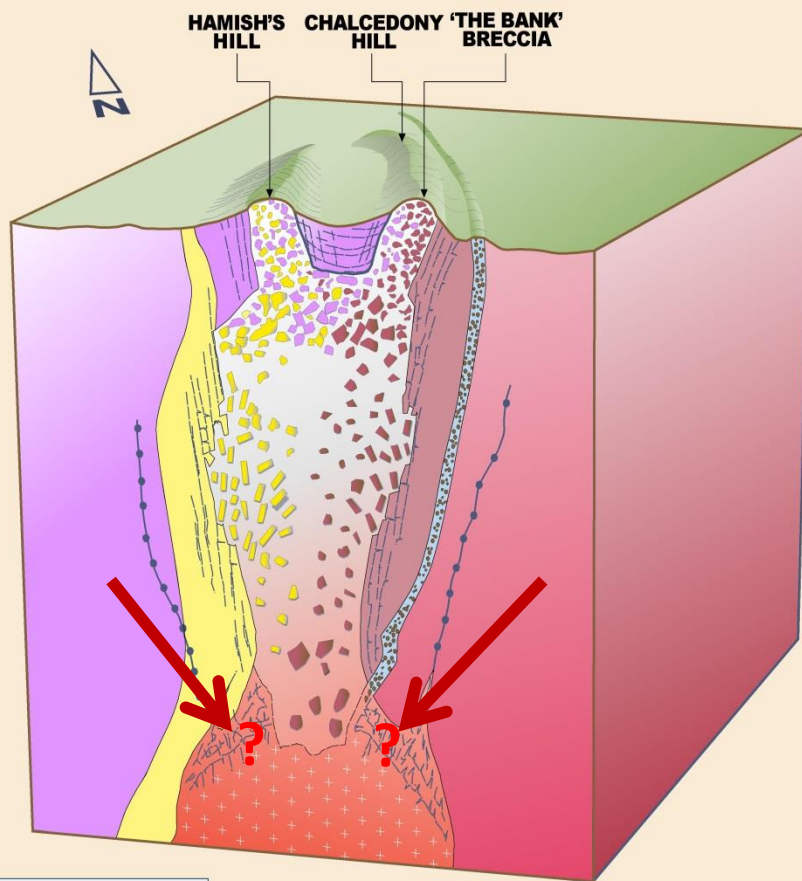
RAVENSWOOD PROJECT - Drilling



Ravenswood Project – ‘The Bank’ breccia

- ✓ Confirmed as a copper-moly-silver discovery
- ✓ Best result:
 - 6.05m at 1.31% copper, 100ppm molybdenum and 12.4g/t silver

RAVENSWOOD PROJECT



	Sheeted quartz veins
	Mixed lithology Hydrothermal breccia
	Porphyry dyke
	Pebble dyke
	Porphyry
	Porphyritic Rhyolite
	Barrabas Adamellite
	Scoop Holes Granodiorite

0 500
~ metres

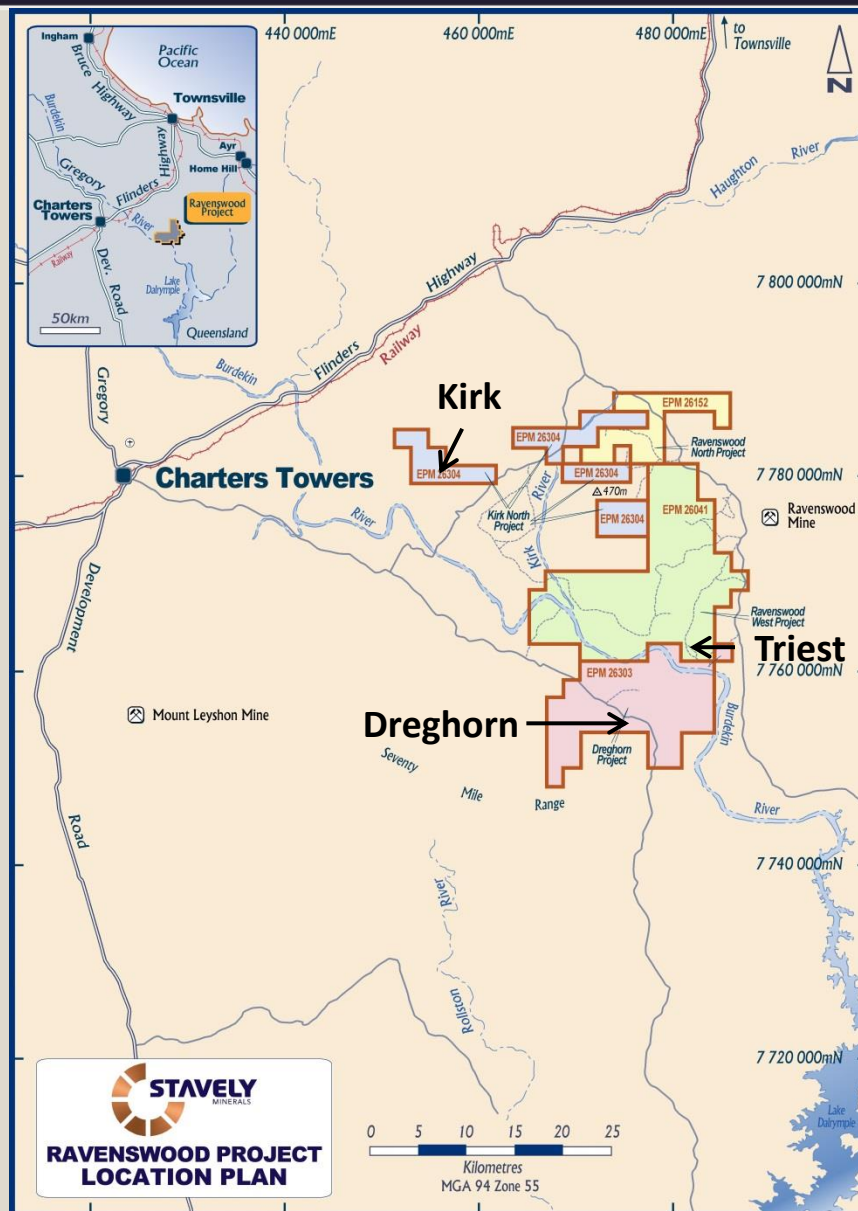
scale approximate



Ravenswood Project – 'The Bank' breccia

- ✓ Does it lead to a mineralised porphyry at depth?
- ✓ Stavely intends seeking expert advice

RAVENSWOOD PROJECT



Ravenswood Project – Focus for the upcoming field season

- ✓ Triest Goldfield – one of three original mine ‘camps’ in the Ravenswood District
- ✓ Kirk Goldfield – some of the deepest, highest grade gold mines in the district
- ✓ Dreghorn – epithermal quartz textures at surface, 2.6g/t gold in soils not followed-up
- ✓ Dreghorn, excellent VMS potential adjacent to known occurrence
- ✓ Follow-up of recent stream geochem gold and rare-earths anomalies

Thank You

Contact Us:

Stavely Minerals Limited

Level 1, 168 Stirling Highway

Nedlands WA 6009

www.stavely.com.au

info@stavely.com.au

Ph: 08 9287 7630

The information in this presentation is extracted from information available to view on www.stavely.com.au. The company confirms that it is not aware of any new information or data that materially affects the information included in the original market announcement and, in the case of estimates of Mineral Resources or Ore Reserves, that all material assumptions and technical parameters underpinning the estimates in the relevant market announcement continue to apply and have not materially changed. The company confirms that the form and context in which the Competent Person's findings are presented have not been materially modified from the original market announcement.