

## CEARA LITHIUM PROJECT UPDATE: STUDY DEFINES 4 KEY TARGETS AT SOLONOPOLE

Cougar Metals NL (ASX Code: CGM) (“Cougar”) is pleased to announce that a lithium pegmatite targeting study conducted by Southern GeoScience Consultants has identified four (4) high priority lithium targets at its Solonopole Project.

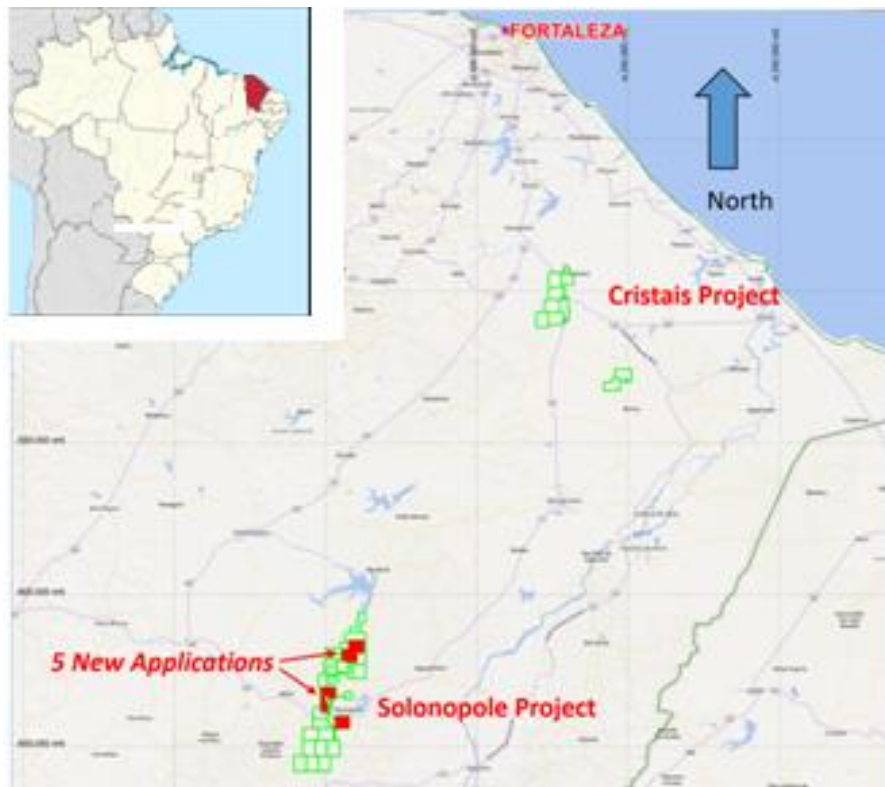
The four (4) targets defined relate to airborne magnetics and radiometric signatures coincident with historical sampling results.

The study was undertaken for the purposes of streamlining planned 2017 exploration at the Solonopole Project.

*A staged exploration program in 2017 at Solonopole has now been planned following the receipt of the study information.*

### **Solonopole**

Cougar’s Solonopole Project lies approximately 3.5 hours drive south-west of Fortaleza, the capital of Ceara, in the north of Brazil.



*Location map: Ceara Lithium Project; tenement holding in green*

*Solonopole Project – highlights include:*

- one of only two regions in Brazil mined for lithium;
- lithium mined in the area is currently used in the domestic ceramic and lubrication industries;
- DNPM mapping in 2012 identified over 200 pegmatities in the region;
- DNPM sampling in 2012 returned grades between 0.5% and 9.41% Li<sub>2</sub>O (from 11 of 60 grab samples collected);
- lithium minerals of spodumene, amblygonite and lepidolite identified plus tin, niobium, tantalum and gemstones; and
- no modern exploration previously undertaken except for small surface sampling program performed by the DNPM in 2012.



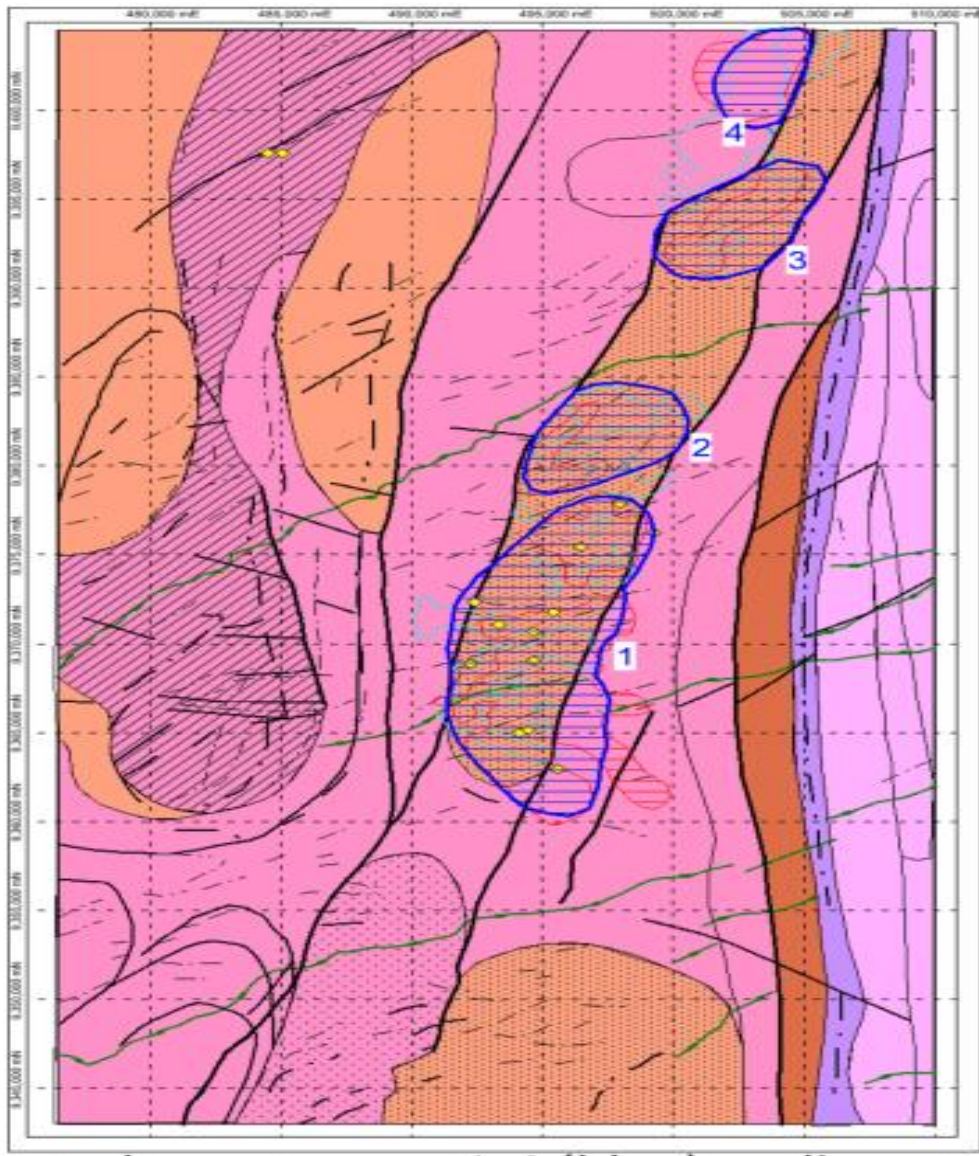
*Image: Pegmatite Mineralisation at the Solonopole Historical Lithium Mining Centre*

### ***Solonopole Targeting Study***

Southern GeoScience Consultants (SGC) have undertaken a remote sensing and airborne geophysical targeting exercise across the highly prospective Solonopole Lithium Project.

SGC completed processing of satellite (Aster and Landsat 8) imagery, airborne magnetics and radiometrics data. Processed data together with available geological and mineral occurrence information were used to target lithium bearing pegmatites.

The exercise identified four (4) main targets as shown in the figure below:



*Figure 1: SGC interpretation*

The four (4) targets defined by SGC are related to airborne magnetic and radiometric signatures, along with Landsat and Aster signatures similar to those coincident with locations sampled by the DNPM which identified lithium mineralisation in a 2012 survey.

### **Solonopole Exploration Program 2017**

Following receipt of the SGC study information, Cougar is now planning a staged exploration program targeting the four (4) target zones defined by the geophysical interpretation, including:

1. Reconnaissance geological mapping and grab sampling
2. Soil geochemistry to identify hidden pegmatite mineralisation. A handheld XRF Analyzer will be utilized to identify pathfinder indicator minerals using the methodology successfully developed and utilized by other Australian lithium exploration companies. The use of an XRF Analyzer provides a quick and cost effective determination of soil geochemistry.
3. Trenching and drill planning will be planned following the return of results.

For further information please contact the undersigned via email at [r.swick@cgm.com.au](mailto:r.swick@cgm.com.au) or alternatively contact Michael Fry (Director, CFO & Company Secretary) on +61 8 9226 5002.

Yours sincerely

**COUGAR METALS NL**



**RANDAL SWICK**

*Executive Chairman*

### **Competent Persons Statements**

*The information in this report that relates to Exploration Results or Minerals Resources in relation to the Ceara Lithium Project is extracted from an ASX Announcement dated 3 August 2016, (see ASX Announcement – 3 August 2016 “LOI Executed over Brazilian Lithium Project”, [www.cgm.com.au](http://www.cgm.com.au) and [www.asx.com.au](http://www.asx.com.au) ). The Company confirms that it is not aware of any new information or data that materially affects the information included in the original market announcement and that all material assumptions and technical parameters underpinning the Exploration Results or Minerals Resource estimates in the relevant market announcement continue to apply and have not materially changed. The Company confirms that the form and context in which the Competent Person’s findings are represented have not been materially modified from the original market announcement.*

*Information in this report that relates to geophysical results is based on information compiled by Mr William Peters (Fellow of the Australasian Institute of Geoscientists). Mr Peters is a Director of Southern GeoScience Consultants and has sufficient experience which is relevant to the style of mineralisation and type of deposits under consideration and to the activities undertaken to qualify as a Competent Person as defined in the 2012 edition of the ‘Australasian Code for Reporting of Exploration Results, Mineral Resources and Ore Reserves’. Mr Peters consents to the inclusion in the release of the statements based on his information in the form and context in which they appear.*