

## SIGNIFICANT Ag Pb Zn INTERSECTIONS AT KEMPFIELD HENRY ZONE

### Argent at a glance

ASX-listed mineral resource company focused on the expansion, development, extraction and marketing of its existing base and precious metals discoveries in NSW.

### Facts

■ ASX Code:	ARD, ARDO
■ Share price (14 March 2017):	\$0.047
■ Shares on issue:	360.7 M
■ Market capitalisation:	\$16.96 M

### Directors and Officers

**Stephen Gemell**  
Non-Executive Chairman

**David Busch**  
Managing Director

**Peter Nightingale**  
Non-Executive Director

**Peter Michael**  
Non-Executive Director

**Vinod Manikandan**  
Company Secretary

### Contact details

PRINCIPAL OFFICE  
Suite 6, Level 6, 50 Clarence Street  
Sydney NSW 2000  
T: +61 2 9262 2211  
F: +61 2 9475 5346

REGISTERED OFFICE  
Level 2, 66 Hunter Street  
Sydney NSW 2000  
T: +61 2 9300 3390  
F: +61 2 9221 6333  
E: [admin@argentminerals.com.au](mailto:admin@argentminerals.com.au)

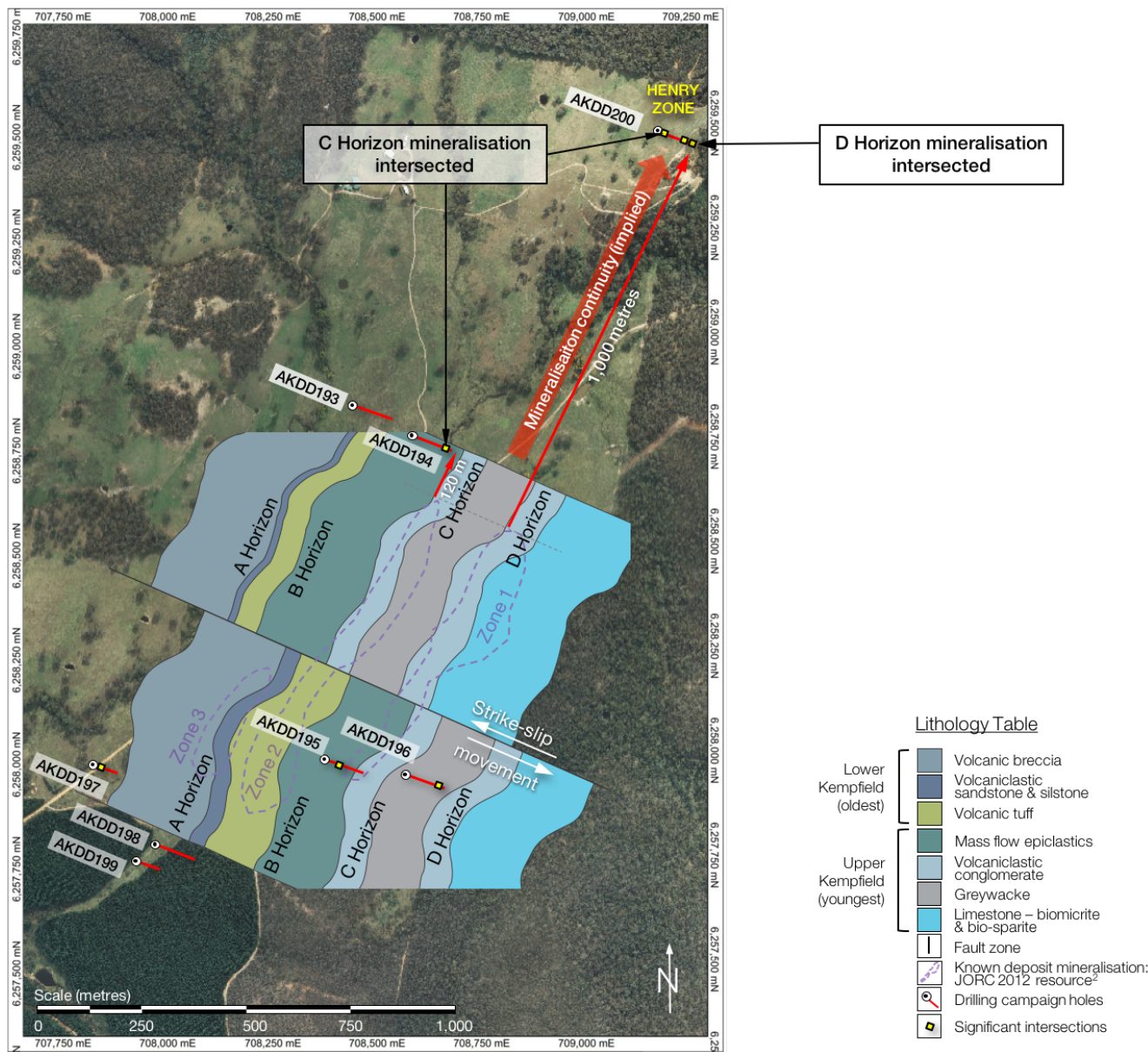
### Highlights:

- **Significant silver, lead and zinc intersected at the Henry Zone:** five separate mineralised intervals (total combined length **45.9 metres**) intersected by hole AKDD200, incl. :
  - 16.0 m @ 0.6% Pb, 1.8% Zn, 83 g/t Ag, 0.1 g/t Au from 205.0 m:**
    - incl. **7.6 m @ 1.2% Pb, 3.4% Zn, 126 g/t Ag, 0.2 g/t Au, from 212.4 m;**
    - incl. **1.0 m @ 2.2% Pb, 8.3% Zn, 250 g/t Ag, 0.2 g/t Au from 213.4 m.**
- **Potential 1,000 metre northeast strike extension identified** – likely mineralisation continuity identified from Kempfield North to the Henry Zone.
- **The discovery of extensions to mineralisation in the southeast and potential additional 800 metre strike extension to the south** - further supported by the intersection of D Horizon mineralisation by hole AKDD196.
- **High grade mineralisation potential in Kempfield West and to the south.**

Argent Minerals Limited (ASX: ARD, Argent, or the Company) is pleased to report exploration results for the completed eight hole diamond drilling programme (AKDD193 to ADKK200) at Kempfield, NSW.

This report provides the balance of the assay results submitted to date for the program, being for holes AKDD193, 194, 196 and 200.

Figure 1 - Plan view illustrating the locations of the current eight hole drilling programme in relation to the known deposit, and the implied potential for continuity of mineralisation from the main deposit.



### AKDD200 INTERSECTS SIGNIFICANT SILVER LEAD AND ZINC AT THE HENRY ZONE

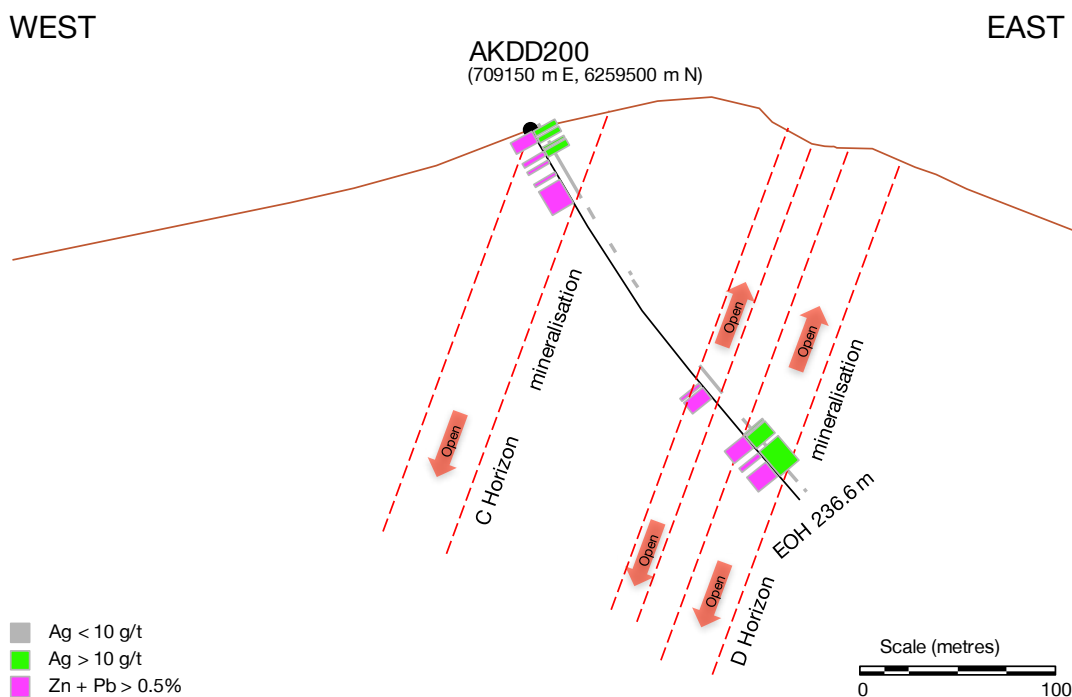
Hole AKDD200 intersected several relatively wide intervals of silver lead and zinc mineralisation including high grades from 2 metres to 221 metres, significantly extending known mineralisation at depth, and implying significant strike extension implications for the Kempfield deposit.

The returned results identified five separate mineralised intervals with a total combined downhole length of **45.9 metres (true width 36.8 metres)**. These are summarised together with selected intersections highlighted as follows:

- 6.0 m @ 1.0% Pb, 0.1% Zn, 22 g/t Ag and 0.0% Au from 2.0 m;
- 10.0 m @ 0.1% Pb, 2.8% Zn and 2.0 g/t Ag from 32.0 m  
*including:*            **1.0 m @ 0.2% Pb, 7.6% Zn and 4.0 g/t Ag from 33.0 m;**  
*and:*                    **1.0 m @ 0.1% Pb, 5.6% Zn and 2.0 g/t Ag from 34.0 m;**
- 5.0 m @ 0.3% Pb, 0.8% Zn and 2.0 g/t Ag from 161.0 m;
- 8.9 m @ 0.6% Pb, 1.8% Zn and 46 g/t Ag from 193.2 m;  
*including:*            **2.0 m @ 0.5% Pb, 2.2% Zn and 96 g/t Ag from 198.9 m;**
- **16 m @ 0.6% Pb, 1.8% Zn, 83 g/t Ag and 0.1 g/t Au from 205.0 m**  
*including:*            **7.6 m @ 1.2% Pb, 3.4% Zn, 126 g/t Ag and 0.2 g/t Au from 212.4 m;**  
*including:*            **1.0 m @ 2.2% Pb, 8.3% Zn, 250 g/t Ag and 0.2 g/t Au from 213.4 m.**

Figure 2 provides a section view of AKDD200 illustrating the reportable significant AKDD200 intersections in the context of the intersected host horizons C and D.

Figure 2 – Section view illustrating the significant mineralisation intersected by hole AKDD200.



**About hole AKDD200**

AKDD200 was drilled to test the potential depth extensions to the Henry Zone located 1,000 metres along strike to the northeast of the main Kempfield deposit at the site of the historic barite mine operated by the Henry brothers.

Previously referred to as the Quarries Zone, the Henry Zone portion of the Kempfield deposit is included in the Kempfield JORC 2012 mineral resource estimate<sup>1</sup>, which was based on historical drilling in the area to a depth of approximately 80 metres.

AKDD200 was drilled to a total length of 236.6 metres through the main volcanoclastic conglomerate sequences

<sup>1</sup> See Mineral Resources and Ore Reserves Statement in the 30 June 2016 Annual Report to Shareholders.

hosting the C and D Horizons. The drillhole was collared in the mid-section of the C Horizon and continued through the overlying greywacke sequence, which has progressively developed into calcareous silts and sands to the north.

Following some intermittent footwall mineralisation observed from 193 metres, the drillhole intersected the main volcanoclastic conglomerate sequence hosting D Horizon from 207 metres.

The geology of the Henry Zone appears to have undergone a significant sinistral (strike-slip) dislocation similar in magnitude to the offset seen in Central Kempfield. Further interpretive work is continuing.

Initial samples were selected from 2.0 to 221.0 metres and submitted for assay.

Subject to further analysis of the drillhole database for the Henry Zone, the intersected mineralisation remains open at depth down dip at an angle of approximately  $-70^{\circ}$  to the west, as well as up dip towards the surface, representing the potential for significant additional resource tonnage.

Figure 3 - Photo of AKDD200 drill core including highlighted sections of mineralised intervals: 1.0 m @ 0.2% Pb, 7.6% Zn (7.8% Pb+Zn), 4.0 g/t Ag from 33.0 m; and 1.0 m @ 0.1% Pb, 5.6% Zn (5.7% Pb+Zn) and 2.0 g/t Ag from 34.0 m.



Figure 4 – Photo of AKDD200 drill core including a highlighted section of the mineralised interval: 1.0 m @ 2.2% Pb, 8.3% Zn (10.5% Pb+Zn), 250 g/t Ag and 0.2 g/t Au from 213.4 m.



**About the potential strike extension implications of hole AKDD200 results**

The strike offset in the Henry Zone has provided some excellent information for finalising the geological model at Kempfield. Initially, the Henry Zone appeared as a distinctly separate exhalative system at a different stratigraphic level. Recent drilling has shown that although the Henry Zone does appear to be a separate exhalative centre, it occurs at the same stratigraphic level as Kempfield North and has been dislocated by faulting.

This implies that the Henry Zone is likely to be a continuation of the main Kempfield deposit, with the direct result that the poorly drilled area between Kempfield North and the Henry Zone has become highly prospective for extensions of mineralisation.

The distance along strike from the northern extent of Zones 1 and 2<sup>1</sup> of the Kempfield JORC 2012 Mineral Resource to hole AKDD200 is approximately 1,000 metres.

<sup>1</sup> Referred to as ‘Lens 1 and Lens 2’ in the Mineral Resources and Ore Reserves Statement.



**NORTHERN MINERALISATION EXTENSIONS – FURTHER SUPPORTED BY AKDD193/194**

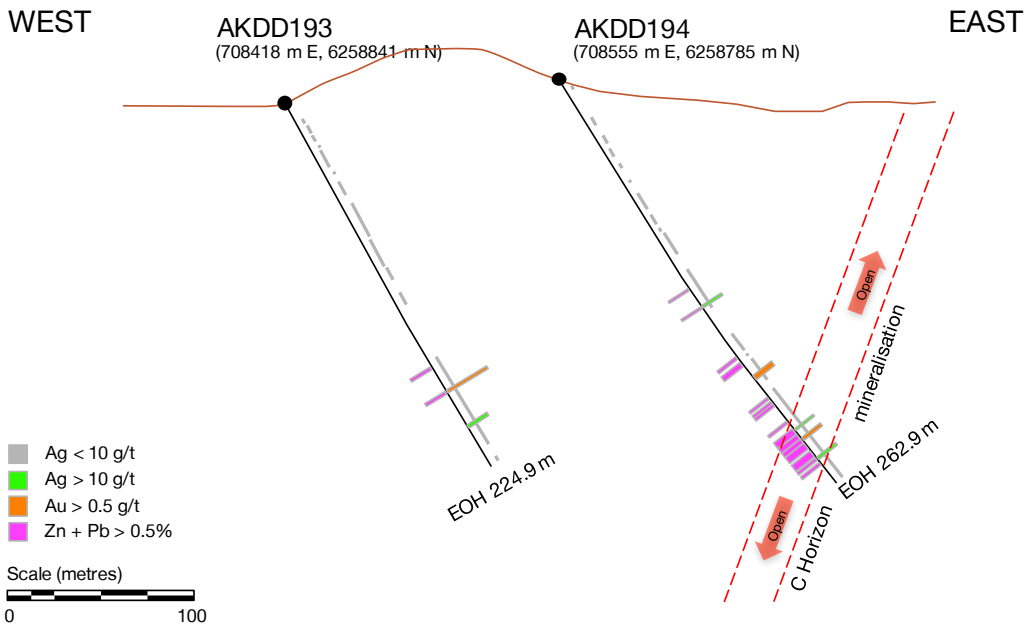
**About hole AKDD194**

AKDD194 successfully tested a potential extension of C Horizon Kempfield North along strike to the northeast toward the Henry Zone.

Initial samples were selected from 5.0 to 262.7 metres at various intervals and submitted for assay. The returned results identified ten separate mineralised intervals with a total downhole length of **23.1 metres (true width 19.1 metres)**. Selected intersections are noted together with highlights as follows:

- 0.6 m @ 0.5% Pb, 1.9% Zn, 14 g/t Ag and 0.1 Au from 144.2 m;
- 0.8 m @ 0.1% Zn, 1 g/t Ag and 0.4 g/t Au from 179.2 m;
- 2.1 m @ 0.6% Pb, 2.0% Zn, 6 g/t Ag and 0.1 g/t Au from 180.0 m;
- 1.0 m @ 0.4 g/t Au from 186.1 m;
- 2.0 m @ 0.8 g/t Ag from 190.8 m;
- 1.6 m @ 0.2% Pb, 1.8% Zn, 6 g/t Ag and 0.1 g/t Au from 220.3 m;
- 12.1 m @ 0.3% Pb, 0.8% Zn, 4 g/t Ag and 0.1 g/t Au from 226.3 m.

Figure 5 - Section view illustrating the significant mineralisation intersected by AKDD194.



The intersection of C Horizon mineralisation by hole AKDD194 indicates a potential strike extension of approximately 120 metres along strike to the northeast of the northern extent of the existing JORC 2012 mineral resource estimate (see Figure 4). The intersected mineralisation remains open at depth down dip at an angle of approximately -70° to the west, as well as up dip towards the surface, representing the potential for significant additional resource tonnage.

**About hole AKDD193**

AKDD193 showed a significant thickening of the mass flow epiclastic sequence. The drillhole was positioned to test the location of the B Horizon at a depth of approximately 60 metres and resulted in collaring directly into the epiclastic sequence, and missing the B Horizon. This valuable information will be employed to update the sparse



historical drilling database for this western part of Kempfield, and in turn refine the Kempfield geological model for improved future drill targeting.

The potential remains for the extension of the A and B Horizons into the northwest region of the Kempfield deposit, and discovery of a new lens in AKDD197<sup>1</sup> shows that the distal footwall of the main Kempfield deposit holds significant potential.

### **SOUTHERN MINERALISATION EXTENSIONS – FURTHER SUPPORTED BY AKDD196**

The primary objective of this AKDD196, and AKDD195, was to test for geological continuity from Kempfield North, and define stratigraphic intervals that would host Horizons C and D.

This hypothesis has now been tested and proven.

Hole AKDD195's successful intersection of C Horizon mineralisation was announced on 20 February 2017 – '*20 m Intersection Confirms New Kempfield Southeast Zone*'.

Similarly, AKDD196 was designed to test for D Horizon mineralisation of the new Kempfield southeast zone, the results of which follow.

#### **About hole AKDD196**

AKDD196 successfully tested an extension of D Horizon in Kempfield South, to the east of the C Horizon mineralisation intersected by AKDD195.

Whilst the intersected mineralisation was relatively thin this provided sufficient silver grades to define the area as high potential for further intersections.

Consistent with the predictions of the Kempfield genesis model<sup>2</sup>, the intersected mineralisation appears as a lower temperature variant and is expected to hold high potential for further extensions containing silver, and possibly gold.

Initial samples were selected from 15.0 to 282.0 metres at various intervals and submitted for assay.

The returned results identified a single 5 metre silver mineralisation interval from 256.0 metres (true width 4.1 metres):

- 5.0 m @ 51 g/t Ag from 256.0 m
  - including:* 3.0 m @ 75 g/t Ag from 258.0 m;
  - including:* 1.0 m @ 102 g/t Ag from 258.0 m;

#### **About the new south east mineralisation zone and strike extension potential further to the south**

Potential exists along strike to surface and at depth from AKDD196 with a realistic potential for extensions to the Sugarloaf Mine located 800 metres to the south along strike<sup>3</sup>.

The nature of the known strike and lateral continuity of mineralisation and geology supports an extension of 800 metres along strike to an historic mine.

Figure 6 provides a section view of AKDD195 and 196 illustrating the reportable significant intersections and the interpreted host horizons C and D.

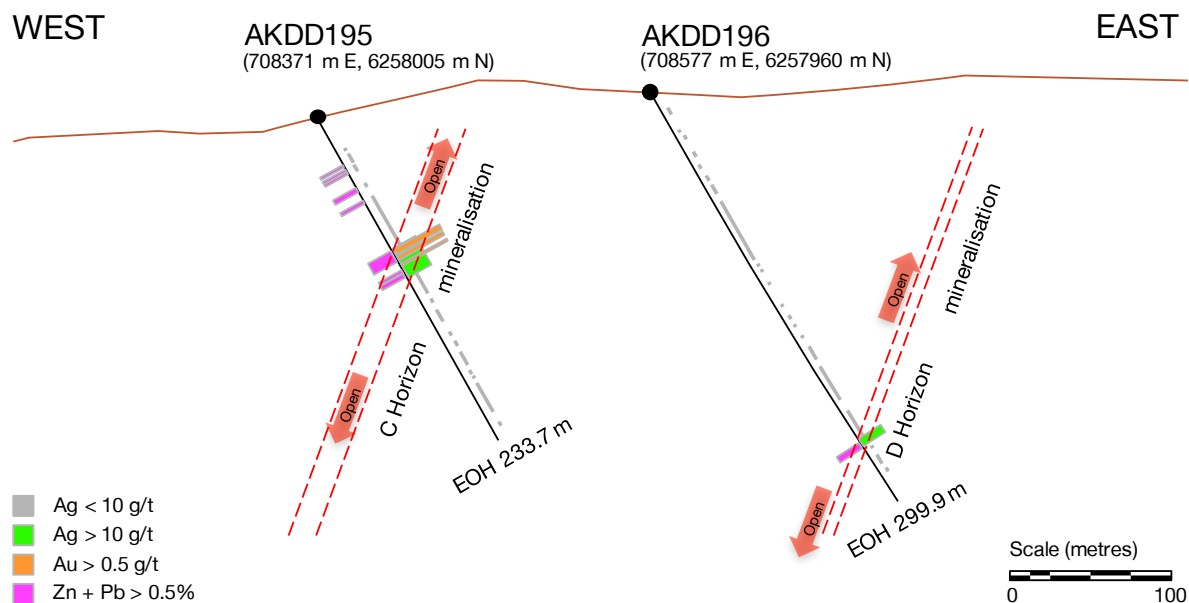
---

<sup>1</sup> See ASX announcement 2 February - 10 Metre Gold Intersection Returned by 1st Kempfield Assays.

<sup>2</sup> See 20 February 2017 ASX announcement – Presentation to investors (p. 6).

<sup>3</sup> 20 February 2017 ASX announcement - 20 m Intersection Confirms New Kempfield Southeast Zone.

Figure 6 - Section view illustrating the significant C and D Horizon mineralisation intersected by AKDD195 and AKDD196.



**SUMMARY**

The eight hole drilling programme has provided excellent information for refining the geological model at Kempfield, and for defining the prospectivity of key identified stratigraphic controls on mineralisation.

The key results reported in this announcement are summarised as follows:

- **Significant silver, lead and zinc intersected at the Henry Zone** – Five separate mineralised intervals with total combined downhole length 45.9 metres intersected by hole AKDD200, including:

  - 16.0 m @ 0.6% Pb, 1.8% Zn, 83 g/t Ag, 0.1 g/t Au from 205.0 m:
  - including:* 7.6 m @ 1.2% Pb, 3.4% Zn (Pb+Zn 4.6%), 126 g/t Ag, 0.2 g/t Au, from 212.4 m;
  - including:* 1.0 m @ 2.2% Pb, 8.3% Zn (Pb+Zn 10.5%), 250 g/t Ag, 0.2 g/t Au from 213.4 m;
- **Potential 1,000 metre northeast strike extension identified** - Probable mineralisation continuity identified from Kempfield North to the Henry Zone for a potential 1,000 metre northeast strike extension of the main deposit. This is further supported by a 120 metre northeast strike extension identified by hole AKDD194.
- **The discovery of extensions to mineralisation in the southeast** - Further supported by the intersection of D Horizon mineralisation by hole AKDD196. This underlines the significant potential for further extensions of this new zone potentially 800 metres to the south to combine with known mineralisation at the historic Sugarloaf barite mine, and the Gully Swamp copper mine.
- **High grade mineralisation potential in Kempfield West and to the south** - The distribution of mineralisation and metal zonation indicates the Kempfield Deposit comprises key exhalative centres focused around rhyolite intrusives that extend periodically along the length of the known deposit, pointing to the potential for high grade mineralisation in the footwall areas of Kempfield (Kempfield West) and the area to the south.

This ASX Report must be read in conjunction with Appendix A and JORC 2012 Table 1 provided in Appendix B.

For further information please contact:

David Busch

Managing Director

**Argent Minerals Limited**

M: 0415 613 800

E: [david.busch@argentminerals.com.au](mailto:david.busch@argentminerals.com.au)





## APPENDIX A

### SUMMARY FOR KEMPFIELD DRILLING EXPLORATION RESULTS

Table A – Drill hole summary

BHID	Easting <sup>2</sup> (m)	Northing <sup>2</sup> (m)	RL (m)	Depth <sup>1</sup> (m)	Azimuth (° TN)	Dip (°)	Status
AKDD193	708418	6258841	753.3	224.9	110	-60	Reported
AKDD194	708555	6258785	766.1	262.9	110	-60	Reported
AKDD195	708371	6258005	782.9	233.7	110	-60	Reported
AKDD196	708577	6257960	798.1	299.9	110	-60	Reported
AKDD197	707810	6257998	747.8	152.5	110	-80	Reported
AKDD198	707971	6257785	763.0	206.9	110	-60	Reported
AKDD199	707917	6257751	760.0	215.6	110	-80	Reported
AKDD200	709150	6259500	839.3	236.6	110	-60	Reported

Notes:

1. 'Depth' in Appendix A means hole length from collar to 'End of Hole' (EOH abbreviation)
2. Easting and Northing coordinates are all referenced to Geodetic Datum of Australia 94 (GDA94), Map Grid of Australia (MGA) projection, Zone 55
3. All holes were commenced with PQ3 drill width to firm material (approximately 20 metres), then continued to end of hole with HQ2 width
4. Mineralisation typically dips at 70° to the west. All holes reported in this announcement are inclined at 60° to the east. These parameters define the likely true widths shown in Table B.

Table B – Significant reportable intersections

BHID	From (m)	To (m)	Interval (m)	Pb (%)	Zn (%)	Cu (%)	Ag (g/t)	Au (g/t)	Pb + Zn (%)	True Width (m)
AKDD193	No significant intersections to report									
AKDD193	drilled to 224.9m depth									

BHID	From (m)	To (m)	Interval (m)	Pb (%)	Zn (%)	Cu (%)	Ag (g/t)	Au (g/t)	Pb + Zn (%)	True Width (m)
AKDD194	132.3	133.3	1.0	0.1	0.7	0.0	5	0.1	0.8	0.8
AKDD194	144.2	144.8	0.6	0.5	1.9	0.0	14	0.1	2.5	0.5
AKDD194	177.2	178.2	1.0	0.3	0.7	0.0	6	0.0	0.9	0.8
AKDD194	179.2	180.0	0.8	0.0	0.1	0.0	1	0.4	0.1	0.7

AKDD194	180.0	182.1	2.1	0.6	2.0	0.0	6	0.1	2.6	1.7
AKDD194	186.1	187.1	1.0					0.4		0.8
AKDD194	190.8	192.8	2.0					0.8		1.6
AKDD194	209.6	210.5	0.9	0.2	0.6	0.0	6	0.1	0.8	0.8
AKDD194	220.3	221.9	1.6	0.2	1.8	0.0	6	0.1	2.0	1.3
AKDD194	226.3	238.4	12.1	0.3	0.8	0.0	4	0.1	1.1	10.1
AKDD194 drilled to 262.9 m depth										

BHID	From (m)	To (m)	Interval (m)	Pb (%)	Zn (%)	Cu (%)	Ag (g/t)	Au (g/t)	Pb + Zn (%)	True Width (m)
AKDD196	256.0	261.0	5.0				51			4.1
incl.	258.0	261.0	3.0				75			2.5
AKDD196 drilled to 299.9 m depth										

BHID	From (m)	To (m)	Interval (m)	Pb (%)	Zn (%)	Cu (%)	Ag (g/t)	Au (g/t)	Pb + Zn (%)	True Width (m)
AKDD200	2.0	8.0	6.0	1.0	0.1	0.0	22	0.0	1.1	4.6
incl.	3.0	4.0	1.0	1.1	0.1	0.0	32	0.1	1.2	0.8
AKDD200	32.0	42.0	10.0	0.1	2.8	0.0	2	0.0	2.9	7.7
incl.	33.0	34.0	1.0	0.2	7.6	0.0	4	0.0	7.8	0.8
and	34.0	35.0	1.0	0.1	5.6	0.0	2	0.0	5.7	0.8
AKDD200	161.0	166.0	5.0	0.3	0.8	0.0	2	0.0	1.1	4.1
AKDD200	193.2	202.1	8.9	0.6	1.8	0.0	46	0.0	2.4	7.3
incl.	198.9	200.9	2.0	0.5	2.2	0.0	96	0.0	2.7	1.6
AKDD200	205.0	221.0	16.0	0.6	1.8	0.0	83	0.1	2.4	13.1
incl.	212.4	220.0	7.6	1.2	3.4	0.0	126	0.2	4.6	6.2
incl.	213.4	214.4	1.0	2.2	8.3	0.0	250	0.2	10.5	0.8
and	215.4	216.4	1.0	1.5	3.6	0.0	147	0.1	5.1	0.8
and	217.3	218.2	0.9	1.9	3.2	0.0	154	0.5	5.1	0.7
and	219.1	220.0	0.9	1.3	1.9	0.0	179	0.1	3.2	0.7
AKDD200 drilled to 236.6m depth										



## APPENDIX B - JORC 2012 EDITION TABLE 1

### KEMPFIELD DRILLING EXPLORATION RESULTS

The following information follows the requirements of JORC 2012 Table 1 Sections 1, 2 and as applicable for this ASX announcement.

#### Section 1 - Sampling Techniques and Data

Criteria	Commentary
Sampling techniques	Drill holes are sampled based on observed mineralisation or intensity of alteration. Eight holes were drilled. PQ ¼ core, and HQ ½ core was used for sample submittal. Samples are generally constrained to >0.6 m or <1.4 m interval lengths with an average sample length of 1 m. A minimal amount of samples are taken with interval lengths <0.6 m due to rock condition or stratigraphic constraints.
Drilling techniques	Diamond drilling utilised PQ collars and HQ drilling to depth. The drill string was configured with a triple tube 3 m barrel and wireline/overshot setup.
Drill sample recovery	Recovery was recorded by the geologist or field geotechnician. Triple tube was permanently employed to maintain core integrity
Logging	Geological logging is conducted to a high standard via graphic and digital logging noting lithology, mineralisation, alteration and structure with associated degrees of intensity. Logging is undertaken using both qualitative and quantitative methods accompanied with wet and dry core photography, and sampling for type section litho-geochemistry. Core was oriented when recovered and will be logged in full.
Sub-sampling techniques and sample separation	Drill holes are sampled on observed mineralisation or intensity of alteration. PQ ¼ core, and HQ ½ core was used for sample submittal. Samples were constrained to >0.6 m or <1.4 m interval lengths with an average sample length of 1 m. A minimal amount of samples are taken with interval lengths <0.6 m due to rock condition or stratigraphic constraints. Assay and preparation are carried out by ALS Global Orange and ALS Global Brisbane. 2-3 kg samples were crushed using a jaw crusher, riffle split, and pulverized to produce a 250 g sample for various analytical methods.
Quality of assay data and laboratory tests	Samples were digested with a 4-acid total digest (hydrochloric, perchloric, nitric and hydrofluoric acids) to counteract the ubiquitous presence of barite. Samples were assayed using ICP-AES for: Ag, Al, As, Ba, Be, Bi, Ca, Cd, Ce, Co, Cr, Cu, Fe, Ga, K, La, Li, Mg, Mn, Mo, Na, Ni, P, Pb, S, Sb, Sc, Sr, Th, Ti, Tl, U, V, W, Zn, Zr. Samples over detection limit were re-assayed using 4-acid digest with ICP-AES finish. Au was quantified using a 30g charge with fire assay and AAS finish. Any over-limit samples were assayed via dilution.
Verification of sampling and assaying	Argent and ALS Global employ independent QAQC assay checks. Argent uses coarse crush, fine crush and pulp duplicates, blanks and 2 types of CRM's inserted at a ratio of 1:10.  All drill hole information is stored graphically and digitally in excel format.  Assay results span low-level, high-level and ore-grade amounts which have been reported in a homogenised format.
Location of data points	All data used in this report are in:  Datum: Geodetic Datum of Australia 94 (GDA94)  Projection: Map Grid of Australia (MGA)  Zone: Zone 55  Collar positions were recorded by handheld GPS.  Topographic control was gained using government DTM data with handheld GPS check.
Data spacing	AKDD193 & 194 are located in Kempfield North beyond the western limit of drilling at the Kempfield Ag -Pb-



and distribution	Zn deposit. AKDD 196 is located in Kempfield South beyond the eastern limit of drilling. AKDD200 is located in the Henry Zone with numerous historic drillholes up dip to 80m depth and no drilling down dip.
Orientation of data in relation to geological structure	Samples were taken with consideration of stratigraphy and alteration, samples do not straddle geological boundaries. The immediate local geological sequence and foliation is inclined at 70 degrees to the west returning true widths listed in Appendix A – Table B. Drill holes were targeted to intersect geology on mildly oblique sections to increase intercept potential.
Sample security	Chain of custody involved graphic and digital sign off sheets onsite, sample transfer protocols onsite, delivery to ALS Global Orange by Argent staff, and receipt by ALS Global Orange.
Audits or reviews	A walk through inspection of ALS Global Orange facilities was conducted by the Exploration Manager of Argent and deemed to be satisfactory. A review of assay method was conducted by the Exploration Manager of Argent and was altered from a partial digest (3-acid), to a total digest (4-acid). Significant amounts of barite cause Ag to precipitate out of solution which is difficult to quantify in a partial digest solution.

**Section 2 - Reporting of Exploration Results**

Criteria	Commentary																		
Mineral tenement and land tenure status	<ul style="list-style-type: none"> <li>Exploration Licence Kempfield EL5748, Trunkey Creek, NSW held by Argent (Kempfield) Pty. Ltd. (100%), a wholly owned subsidiary of Argent Minerals Limited. There are no overriding royalties other than the standard government royalties for the relevant minerals.</li> <li>Argent has freehold title to the land which has historically been utilised for pastoral activities. Heritage items have been identified on the property. A native title claim (Gundungurra Application #6) was lodged on the 29th April 1997 covering a large area inclusive of Kempfield. A single counterpart only, the Gundungurra Tribal Council Aboriginal Corporation, responded to Argent advertisements as part of the standard 'right to negotiate' process, and is the sole registrant.</li> <li>The Company's Exploration Licence renewal application for the full licence area for a five (5) year term has been approved to July 2020.</li> </ul>																		
Exploration by other parties	<p>Argent Minerals Limited through its wholly owned subsidiary Argent (Kempfield) Pty Ltd is the sole operator of the project. Argent introduced best industry practice work.</p> <p>Kempfield has been explored for more than forty years by several exploration companies as set out in Table 1.2.1.</p> <p><b>Table 1.2.1 – Exploration history</b></p> <table border="1"> <thead> <tr> <th>Company</th> <th>Period</th> <th>Exploration activities</th> </tr> </thead> <tbody> <tr> <td>Argent Minerals</td> <td>2007-current</td> <td>Drilling, VTEM survey, pole-dipole IP survey, gravity survey, ground EM and down-hole EM survey</td> </tr> <tr> <td>Golden Cross</td> <td>1996-2007</td> <td>Drilling and high resolution airborne magnetic survey</td> </tr> <tr> <td>Jones Mining</td> <td>1982-1995</td> <td>Drilling</td> </tr> <tr> <td>Shell</td> <td>1979-1982</td> <td>Drilling, ground EM survey, dipole-dipole IP survey, and soil sampling</td> </tr> <tr> <td>Inco</td> <td>1972-1974</td> <td>Drilling</td> </tr> </tbody> </table> <p>Earlier exploration was performed by to the industry standard of the time; available QAQC indicates that the historical data is reasonable and suitable for use in Mineral Resource estimates.</p>	Company	Period	Exploration activities	Argent Minerals	2007-current	Drilling, VTEM survey, pole-dipole IP survey, gravity survey, ground EM and down-hole EM survey	Golden Cross	1996-2007	Drilling and high resolution airborne magnetic survey	Jones Mining	1982-1995	Drilling	Shell	1979-1982	Drilling, ground EM survey, dipole-dipole IP survey, and soil sampling	Inco	1972-1974	Drilling
Company	Period	Exploration activities																	
Argent Minerals	2007-current	Drilling, VTEM survey, pole-dipole IP survey, gravity survey, ground EM and down-hole EM survey																	
Golden Cross	1996-2007	Drilling and high resolution airborne magnetic survey																	
Jones Mining	1982-1995	Drilling																	
Shell	1979-1982	Drilling, ground EM survey, dipole-dipole IP survey, and soil sampling																	
Inco	1972-1974	Drilling																	
Geology	<p>The deposit type is a volcanic hosted massive sulphide (VHMS) deposit.</p> <p>The geological setting is in the Siluro-Devonian Kangaloolah Volcanics within the intra-arc Hill End Trough within the Lachlan Orogen, Eastern Australia.</p> <p>The style of mineralisation is strata bound barite-rich horizons hosting silver, lead, zinc ± copper ± gold.</p>																		
Drill hole																			



Information	<table border="1"> <thead> <tr> <th>BHID</th> <th>Easting<sup>2</sup> (m)</th> <th>Northing<sup>2</sup> (m)</th> <th>RL (m)</th> <th>Depth <sup>1</sup> (m)</th> <th>Azimuth (° TN)</th> <th>Dip (°)</th> <th>Status</th> </tr> </thead> <tbody> <tr> <td>AKDD193</td> <td>708418</td> <td>6258841</td> <td>753.3</td> <td>224.9</td> <td>110</td> <td>-60</td> <td>Reported</td> </tr> <tr> <td>AKDD194</td> <td>708555</td> <td>6258785</td> <td>766.1</td> <td>262.9</td> <td>110</td> <td>-60</td> <td>Reported</td> </tr> <tr> <td>AKDD195</td> <td>708371</td> <td>6258005</td> <td>782.9</td> <td>233.7</td> <td>110</td> <td>-60</td> <td>Reported</td> </tr> <tr> <td>AKDD196</td> <td>708577</td> <td>6257960</td> <td>798.1</td> <td>299.9</td> <td>110</td> <td>-60</td> <td>Reported</td> </tr> <tr> <td>AKDD197</td> <td>707810</td> <td>6257998</td> <td>747.8</td> <td>152.5</td> <td>110</td> <td>-80</td> <td>Reported</td> </tr> <tr> <td>AKDD198</td> <td>707971</td> <td>6257785</td> <td>763.0</td> <td>206.9</td> <td>110</td> <td>-60</td> <td>Reported</td> </tr> <tr> <td>AKDD199</td> <td>707917</td> <td>6257751</td> <td>760.0</td> <td>215.6</td> <td>110</td> <td>-80</td> <td>Reported</td> </tr> <tr> <td>AKDD200</td> <td>709150</td> <td>6259500</td> <td>839.3</td> <td>236.6</td> <td>110</td> <td>-60</td> <td>Reported</td> </tr> </tbody> </table> <p>1. Depth is hole length to end of hole.</p>	BHID	Easting <sup>2</sup> (m)	Northing <sup>2</sup> (m)	RL (m)	Depth <sup>1</sup> (m)	Azimuth (° TN)	Dip (°)	Status	AKDD193	708418	6258841	753.3	224.9	110	-60	Reported	AKDD194	708555	6258785	766.1	262.9	110	-60	Reported	AKDD195	708371	6258005	782.9	233.7	110	-60	Reported	AKDD196	708577	6257960	798.1	299.9	110	-60	Reported	AKDD197	707810	6257998	747.8	152.5	110	-80	Reported	AKDD198	707971	6257785	763.0	206.9	110	-60	Reported	AKDD199	707917	6257751	760.0	215.6	110	-80	Reported	AKDD200	709150	6259500	839.3	236.6	110	-60	Reported
	BHID	Easting <sup>2</sup> (m)	Northing <sup>2</sup> (m)	RL (m)	Depth <sup>1</sup> (m)	Azimuth (° TN)	Dip (°)	Status																																																																	
	AKDD193	708418	6258841	753.3	224.9	110	-60	Reported																																																																	
	AKDD194	708555	6258785	766.1	262.9	110	-60	Reported																																																																	
	AKDD195	708371	6258005	782.9	233.7	110	-60	Reported																																																																	
	AKDD196	708577	6257960	798.1	299.9	110	-60	Reported																																																																	
	AKDD197	707810	6257998	747.8	152.5	110	-80	Reported																																																																	
	AKDD198	707971	6257785	763.0	206.9	110	-60	Reported																																																																	
	AKDD199	707917	6257751	760.0	215.6	110	-80	Reported																																																																	
	AKDD200	709150	6259500	839.3	236.6	110	-60	Reported																																																																	
Data aggregation methods	This report contains significant intersections. Significant intersections are continuous intervals of sampling where each individual sample is of an individual grade greater than 0.5% Zn, 0.5% Pb, 0.1% Cu, 10 g/t Ag & 0.2 g/t Au.																																																																								
Relationship between mineralisation widths and intercept lengths	The immediate local geological sequence and foliation is inclined at 70 degrees to the west returning true widths listed in Appendix A – Table B.																																																																								
Diagrams	Diagram descriptions are included in the Figure descriptions.																																																																								
Balanced reporting	This report contains significant intersections. Significant intersections are continuous intervals of sampling where each individual sample is of an individual grade greater than 0.5% Zn, 0.5% Pb, 0.1% Cu, 10 g/t Ag & 0.2 g/t Au. Surrounding drilling has been reported in earlier Argent releases.																																																																								
Other substantive exploration data	All available exploration data relevant to this report has been provided.																																																																								
Further work	Lithogeochemical and geophysical assessments will be conducted to adequately define mineralisation and alteration type. Further drilling is planned to continue in due course.																																																																								



## COMPETENT PERSON STATEMENTS

### Previously Released Information

This ASX announcement contains information extracted from the following reports which are available for viewing on the Company's website <http://www.argentminerals.com.au> :

- 10 October 2016 - Diamond drilling results in major breakthrough at Kempfield<sup>1</sup>
- 2 February 2017 - 10 metre gold intersection returned by 1<sup>st</sup> Kempfield assays<sup>1</sup>
- 20 February 2017 - 20 m Intersection Confirms New Kempfield Southeast Zone<sup>1</sup>

Competent Person:

1. Clifton Todd McGilvray

The Company confirms it is not aware of any new information or data that materially affects the information included in the original market announcements. The Company confirms that the form and context in which the Competent Person's findings are presented have not been materially modified from the original market announcement.

### Exploration Results

The information in this report that relates to Exploration Results is based on information compiled by Mr. Clifton Todd McGilvray who is a member of the Australasian Institute of Mining and Metallurgy, an employee of Argent, and who has sufficient experience relevant to the style of mineralisation and type of deposit under consideration and to the activities being undertaken to qualify as a Competent Person as defined in the 2012 Edition of the 'Australasian Code for Reporting Exploration Results, Mineral Resources and Ore Reserves' (JORC Code). Mr. McGilvray consents to the inclusion in this report of the matters based on the information in the form and context in which it appears.