



Red Valley

Lithium Brines Project:

Drilling Commencing

Mukabe-Kasari Cobalt Project:

Due Diligence Commencing



March, 2017

Capital Structure



As at 1st MARCH, 2017:

- **Shares on issue = 417,481,534**
- **Market capitalisation (at 3.0 cents) = \$12.5 million**
- **Cash = circa \$3 million**
 - **includes recent injection of capital via oversubscribed placement to sophisticated and professional investors**

Board and Advisory Team



Board of Directors

- Jeremy King
- Robert Parton
- Lincoln Ho

Corporate Advisor

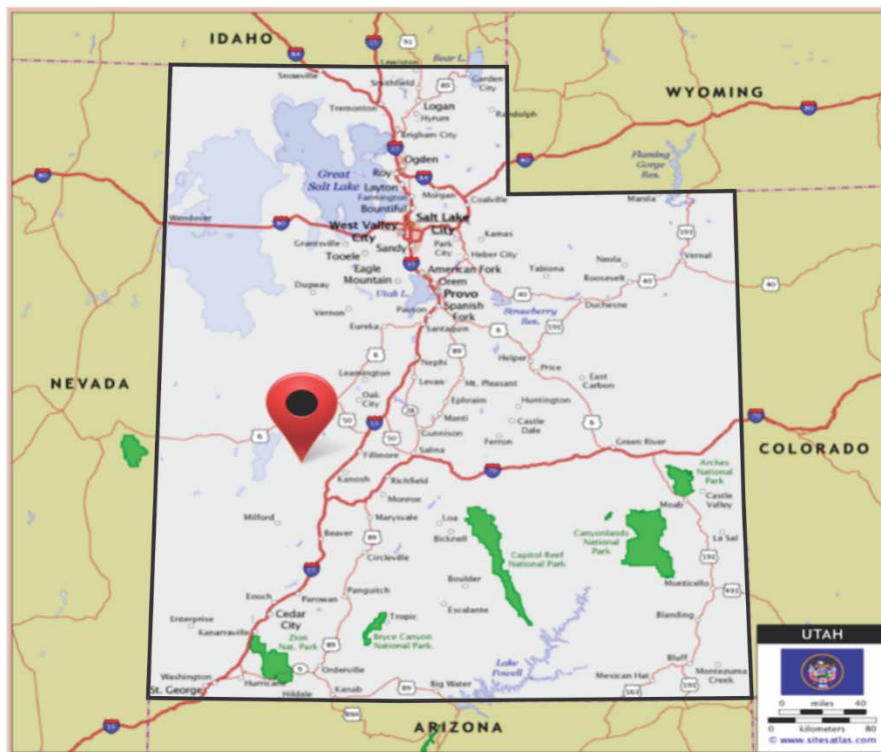
- Xcel Capital

Current Asset Portfolio

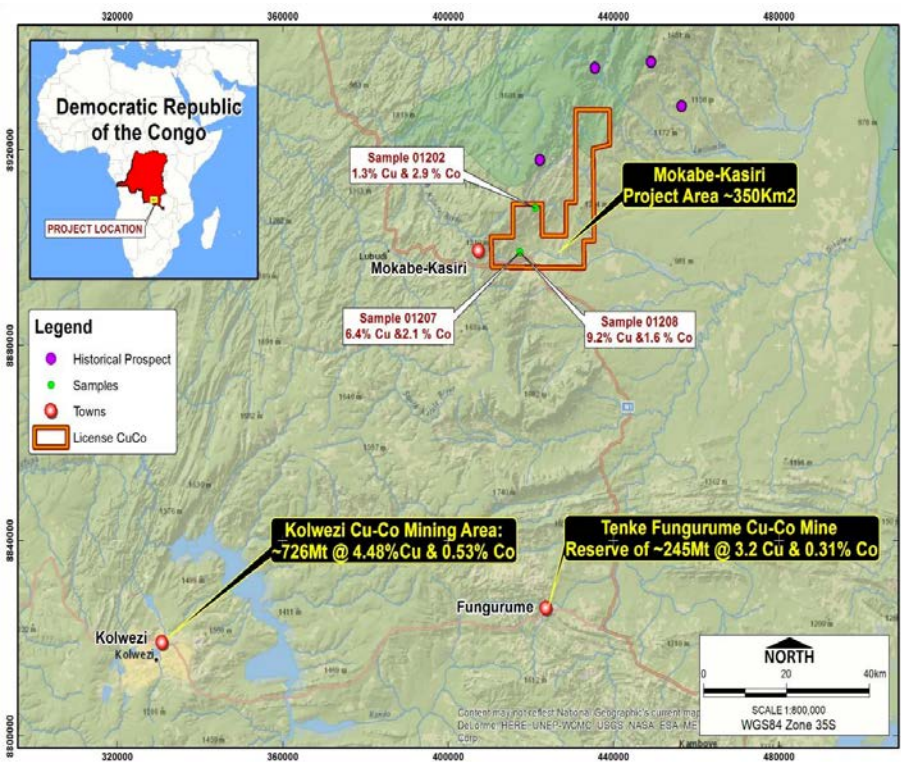


Core focus on **NEW ENERGY METALS & GOLD**

Red Valley Lithium Brines Project (Utah, USA)



Mokabe-Kasiri Cobalt-Copper Project (Katanga Province, DRC)



Upcoming Activity . . .



- **Red Valley Lithium Brines Project:**

- Drilling of 3 Red Valley wells (expected commencement within 7 days)
- Drilling updates (April/May)
- Drilling results of Red Valley (Q2 2017)

- **Mokabe-Kasiri Cobalt-Copper Project:**

- Initial high-level assessment by CSA Global (April)
- Completion of DD and decision to proceed to phase 1 of earn-in (April)
- Phase 1 Earn-in commencement (if option taken): Q2 2017

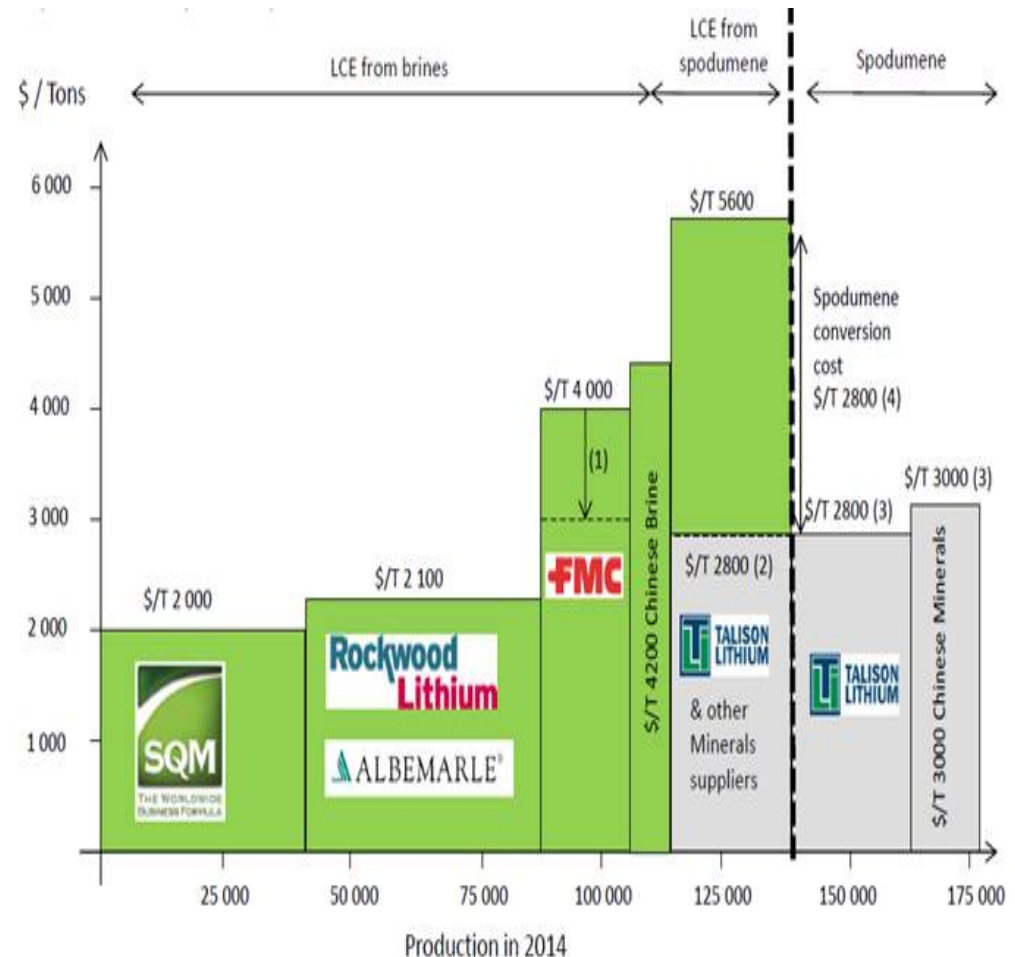
Red Valley Project (Utah, USA)



Red Valley the new Clayton Valley?



- **Clayton Valley, Nevada** holds the **FAMOUS** Silver Peak Mine
- Owned by **Albermarle Corporation** (NYSE: ALB, MC = \$11+ Billion)
- North America's **ONLY** Lithium brine **producer**
- **50 years** in production and **COUNTING**



Lithium Brines operations are lower cost (Pablo Cortesego, SRK Consulting)

Red Valley Project (Utah, USA)



- Red Mountain is chasing USA's second **CONVENTIONAL, ULTRA LONG-LIFE, LITHIUM BRINES PRODUCTION PROVINCE** in a brand new territory
- 6,000 acre Red Valley land package now fully secured in western UTAH
- Drilling to commence, full brine analysis for commercial Lithium enrichment to follow

Clayton Valley vs Red Valley



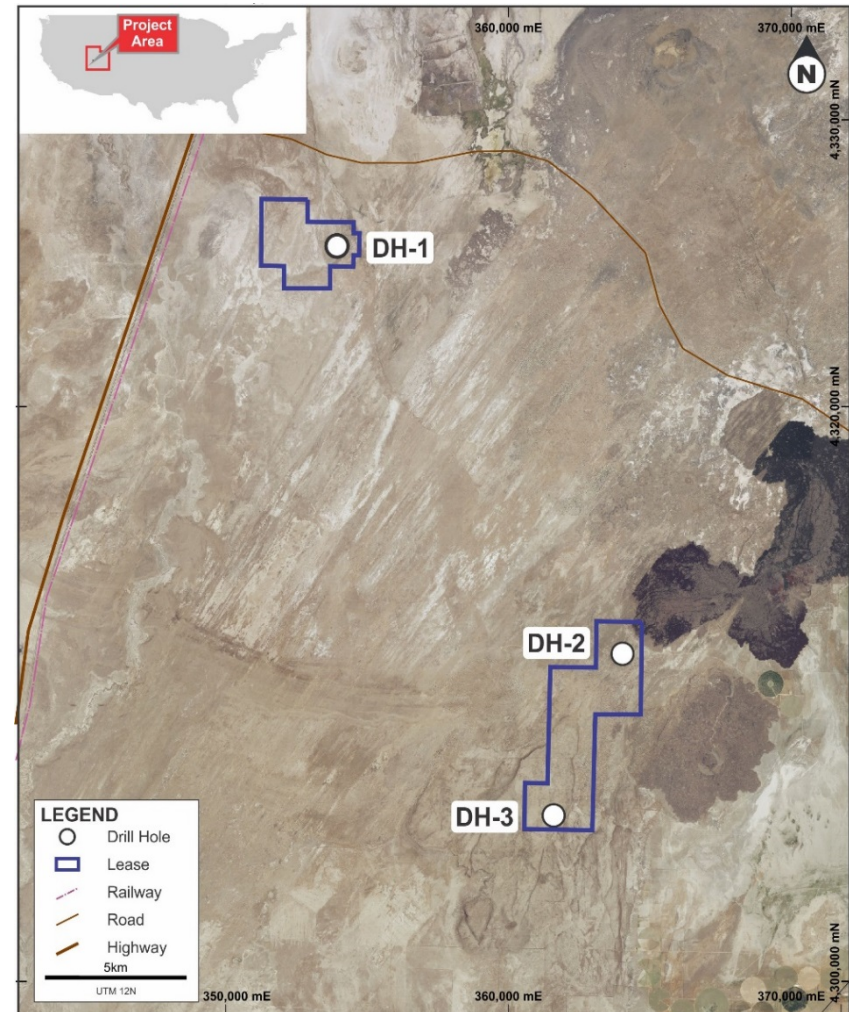
A **REMARKABLE** Clayton Valley lookalike:

GEOLOGICAL CHARACTERISTIC	CLAYTON VALLEY	RED VALLEY
SOURCE - LARGE SCALE LITHIUM - ENRICHED ROCKS	✓	✓
BASIN CONTAINS FINE SEDIMENTS FROM LITHIUM ENRICHED SOURCES	✓	✓
ANOMALOUS LITHIUM IN WATERS	✓	✓
VERTICALLY STABLE - OLD SEDIMENTS OUTCROP AROUND BASIN	✓	✓
POTENTIAL AQUIFERS FROM CYCLICAL SEDIMENTATION	✓	✓
EXTENSIONAL FAULTING	✓	✓
LARGE SCALE FAULTING	✓	✓
TRAVERTINE IN DRILL LOGS	✓	✓
RECENT BASALT VOLCANISM	✓	✓

Red Valley Drilling Program



- Drilling a total of **THREE** 1,000 foot RC wells, located at strategic locations across **6,000 ACRE HOLDING**
- Estimated 25 day drilling programme
- Eastern holes to be drilled first (Holes 1 & 2)
- **EXPERIENCED** local drillers, Grimshaw Drilling, appointed as contractors
- ALS Life Sciences & WETLAB AS laboratories engaged for brine analysis



Red Valley drillhole locations

Red Valley Drilling Program



Following in the footsteps of early stage lithium exploration at Clayton Valley



Rotary drill rig -- Clayton Valley

OPEN HOLE ROTARY DRILLING

- swift and economic
- useful in determining:
 - upper & lower limits of aquifers
 - potential economic concentrations of lithium
 - sedimentary patterns of aquifers & aquipperms

Red Valley Drilling Program



- Water and drill chip samples to be collected at every 10 feet
- 1300+ bottles expected to be used for sampling
- 15 - 20 business day turnaround expected for laboratory analysis



Collecting brines samples -- Clayton Valley

Red Valley Drilling Program

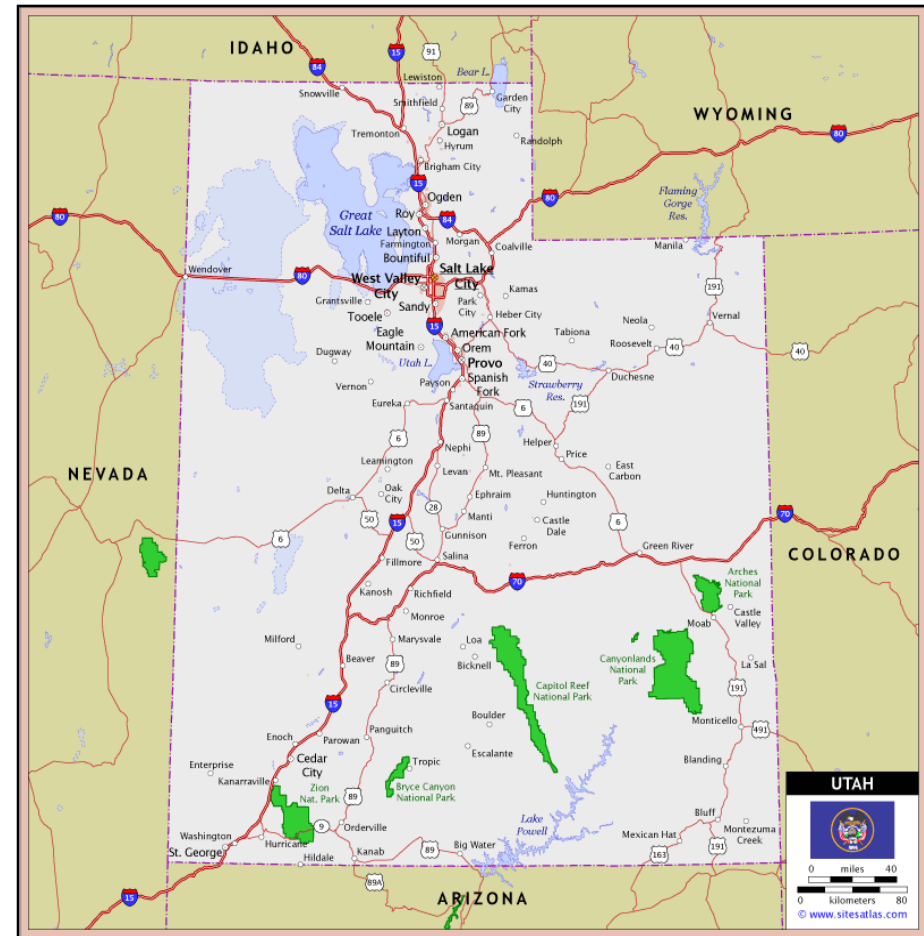


Red Valley project boundary markers

UTAH - A Mining Jurisdiction



- Voted **TOP 10** mining jurisdiction in the world, 2015
- **BACKYARD OF TESLA**, Faraday electric car plants in Nevada
- Tesla seeking to source lithium **EXCLUSIVELY** from North America
- Power, high-quality roads, workforce, rail, all **on doorstep** to project



Funded to Test . . . and Buy



- Last year, RMX was **FULLY FUNDED** for ‘TRY BEFORE YOU BUY’ phase
 1. DRILL
 2. GET RESULTS
 3. THEN, CHOICE TO ACQUIRE
- Recent injection of capital provides RMX ability to acquire major interest in Red Valley project **AND fund** follow-up work:
 - 51% OF RED VALLEY PROJECT FOR US\$250,000
 - OPPORTUNITY TO EARN-IN UP TO 80% BY \$\$\$ IN THE GROUND

Red Valley JV Partner



Bill Feyerabend (B.Sc Geology)

- Arizona-based certified professional geologist for over 40 years
- **Vast experience within the global Lithium Sector**
- Author of expert reports for Clayton Valley players:
 - Lithium-X (mc: c\$100m)
 - Pure Energy (mc: c\$52m)



On-site at the Red Valley Project



Brendan Borg (B.Sc Geology)

- Masters in Hydrogeology (2006)
- Director & Principal Consultant of Borg Geoscience
- Technical Consultant for a number of ASX-listed lithium companies

Red Valley Project Milestones



- ✓ **Securing large land tenure footprint**
- ✓ **Performing required local archeological survey**
- ✓ **Lodge required drill permit applications**
- ✓ **Drill permit approval**
- ? **Commencement of drilling on Red Valley ground**
- ? **Submit assays to independent laboratories**
- ? **Purchase of 51% on project (at RMX's election)**

Mukabe-Kasari Cobalt Project (DRC)

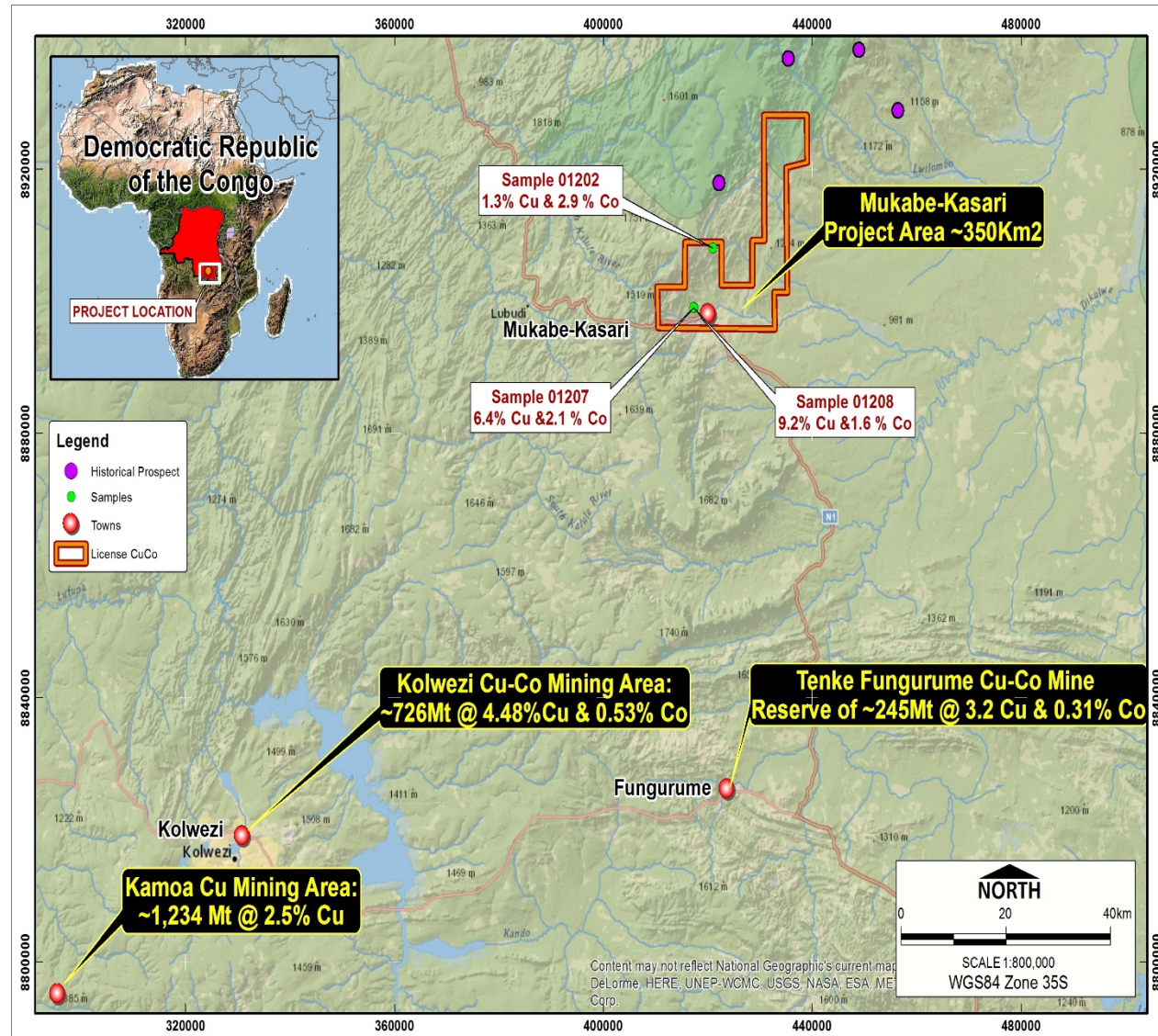


Mukabe-Kasari Project (DRC)



High Grade Cobalt Project

- Total project area comprising 350km²
- ~50km north of world famous Tenke Fungurume Cu-Co Mine
- ~110km north-west of Kolwezi Cu-Co Mine
- Good infrastructure -- roads, power & water



Mukabe-Kasari Project (DRC)



- Average grade of Co from analysis of unwashed grab samples between **3 - 7% Cobalt** & **4 - 22% Copper**
- Initial exploration work mainly pitting & trenching of 40+ holes
- Holes dug until ore body reached - vary between 10 to 23 metres from ground level

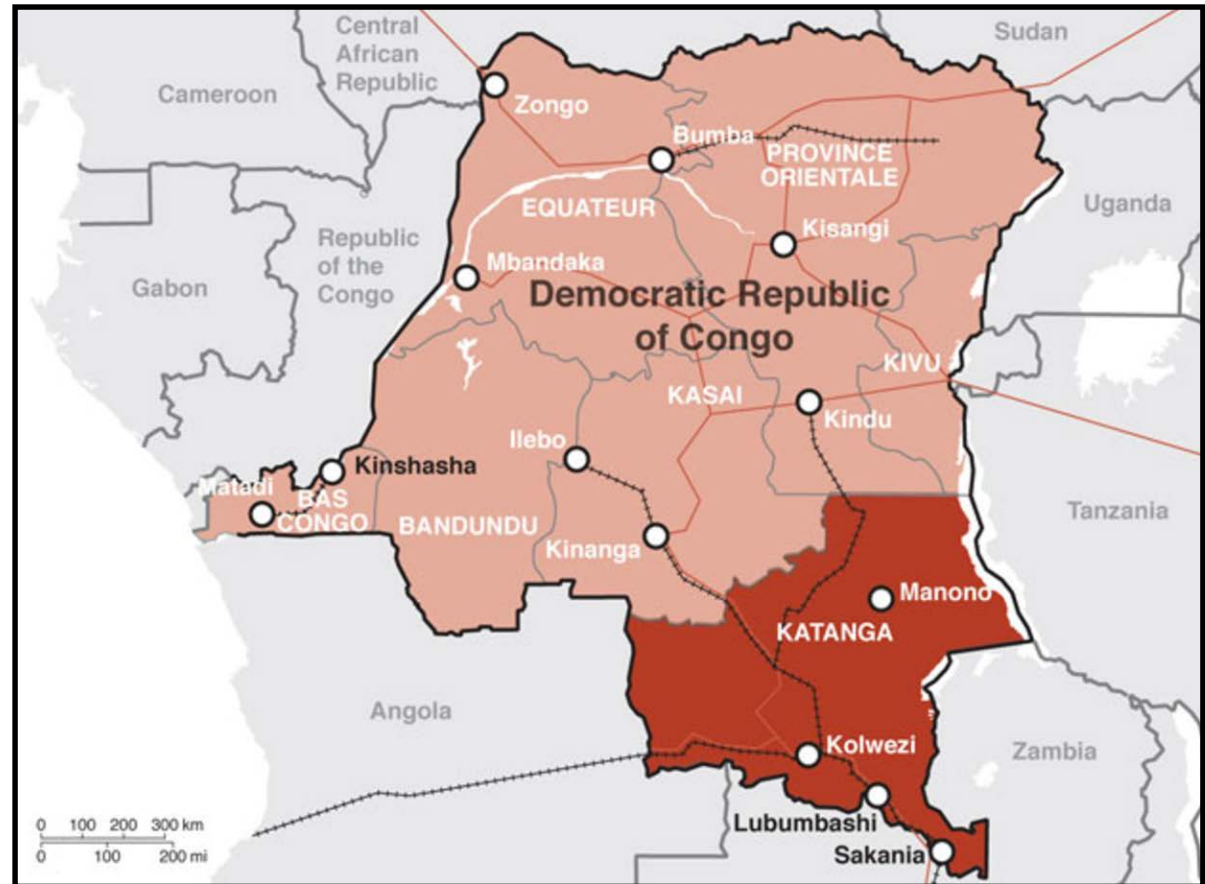
RESULTATS DU LABORATOIRE D'ANALYSES CHIMIQUES				
N°	SAMPLE ID	Cu (%)	Co (%)	Méthode
1	01202	1.3	2.9	AAS
2	01207	6.4	2.1	AAS
3	01208	9.2	1.6	AAS

Recent (2017) assay results

Why the DRC?



- The DRC holds the world's largest supply source of cobalt
- Roughly 63% of global cobalt supply originates in the DRC



Mukabe-Kasari Project (DRC)



- Attractive terms negotiated
- 6 week DD period, **THEN** option to earn-in
- CSA Global engaged to perform due diligence – **HIGHLY EXPERIENCED** in the region
- Staged deal terms provide **OPTIONALITY** for RMX

Phase	Exploration Expenditure	CoCu Interest	RMX Interest
Commencement Date	Nil	100%	0%
First Earn-in	A\$250,000	80%	20%
Second Earn-in	A\$250,000	65%	35%
Third Earn-in	\$500,000	49%	51%
Fourth Earn-in	A\$1.5m	34%	66%
Fifth Earn-in	A\$3.0m	20%	80%¹

Unlocking Potential . . .



RMX

market capitalisation ~ \$12 million

Red Valley **Lithium Brines** Project

- Opportunity to **CONTROL** next lithium brine province in USA
- Large acreage position staked
- Scout drilling campaign imminent

Mukabe-Kasari **Cobalt-Copper** Project

- 350km² in world class geo-metallic domain
- ~50km from world famous cobalt mine
- High cobalt grades
- Attractive deal terms
- DD before earn-in