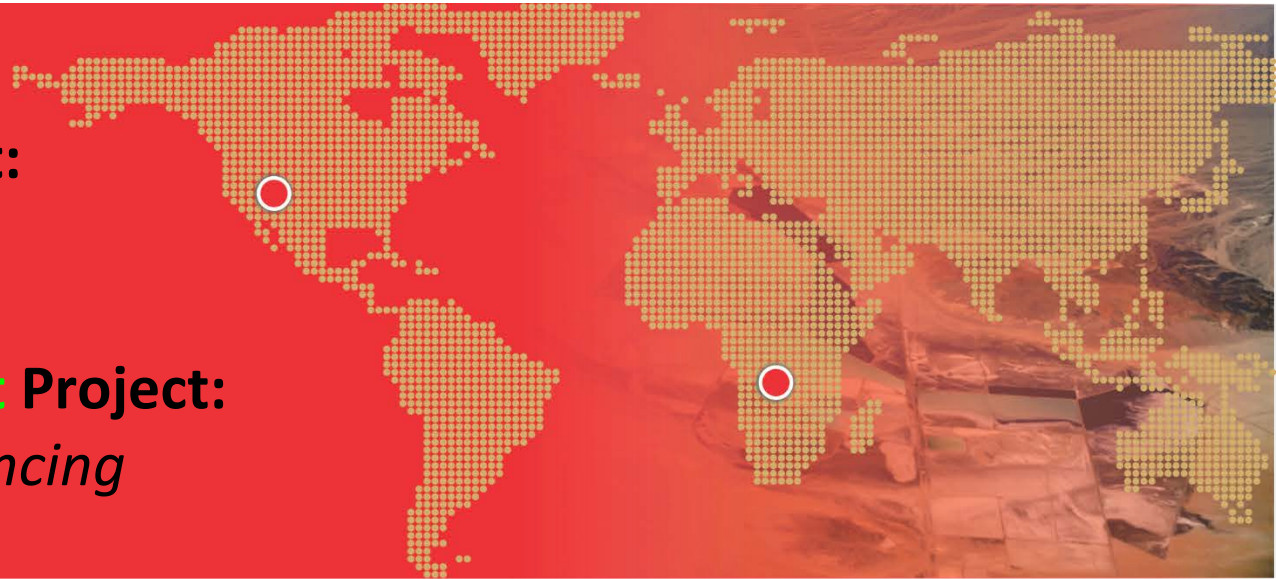




Red Valley
Lithium Brines Project:
Drilling Commencing

Mukabe-Kasari Cobalt Project:
Due Diligence Commencing

April, 2017



Capital Structure



As at 1st MARCH, 2017:

- **Shares on issue = 417,481,534**
- **Market capitalisation (at 3.0 cents) = \$12.5 million**
- **Cash = circa \$3 million**
 - **includes recent injection of capital via oversubscribed placement to sophisticated and professional investors**

Board and Advisory Team



Board of Directors

- Jeremy King
- Robert Parton
- Lincoln Ho

Corporate Advisor

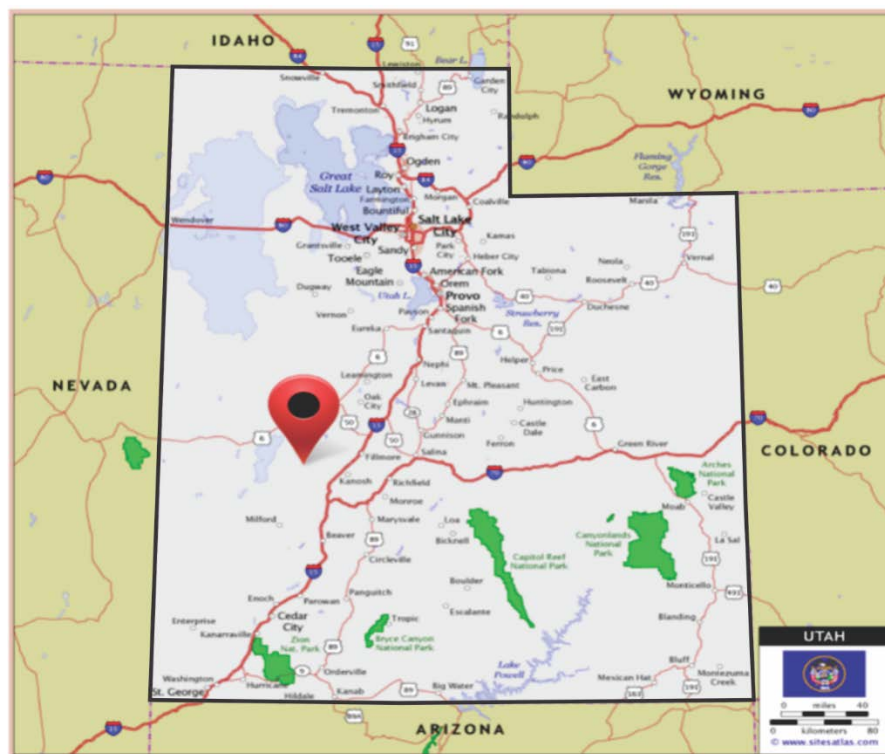
- Xcel Capital

Current Asset Portfolio

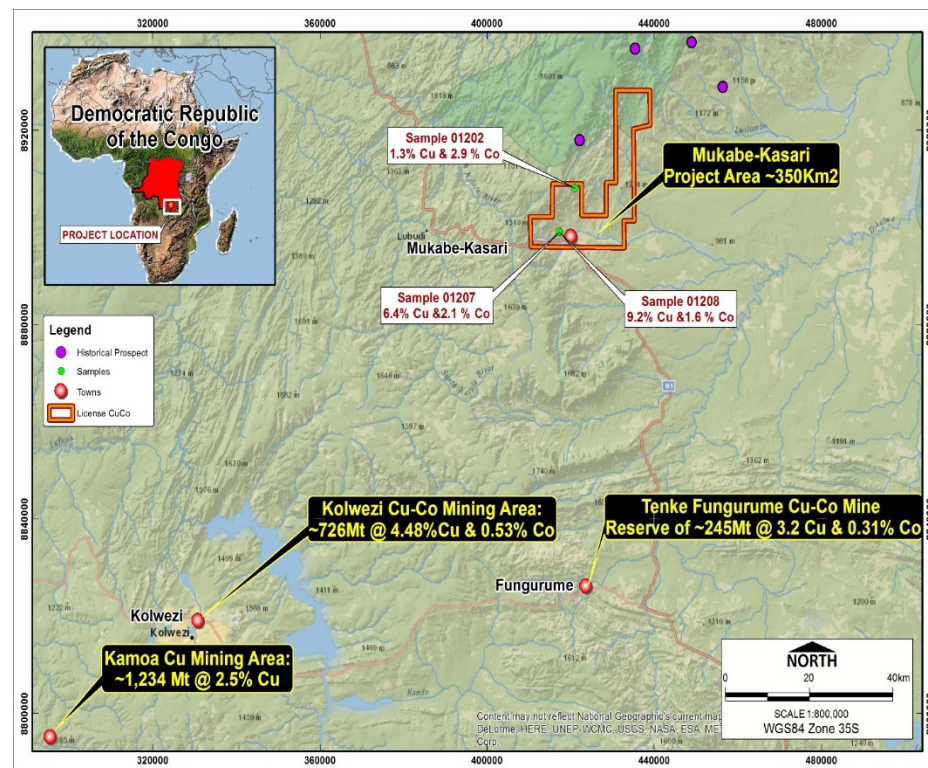


Core focus on **NEW ENERGY METALS & GOLD**

Red Valley Lithium Brines Project (Utah, USA)



Mukabe-Kasari Cobalt-Copper Project (Katanga Province, DRC)



Upcoming Activity . . .



- **Red Valley Lithium Brines Project:**

- Drilling of 3 Red Valley wells (expected commencement within 7 days)
- Drilling updates (April/May)
- Drilling results of Red Valley (Q2 2017)

- **Mukabe-Kasari Cobalt-Copper Project:**

- Initial high-level assessment by CSA Global (April)
- Completion of DD and decision to proceed to phase 1 of earn-in (April)
- Phase 1 Earn-in commencement (if option taken): Q2 2017

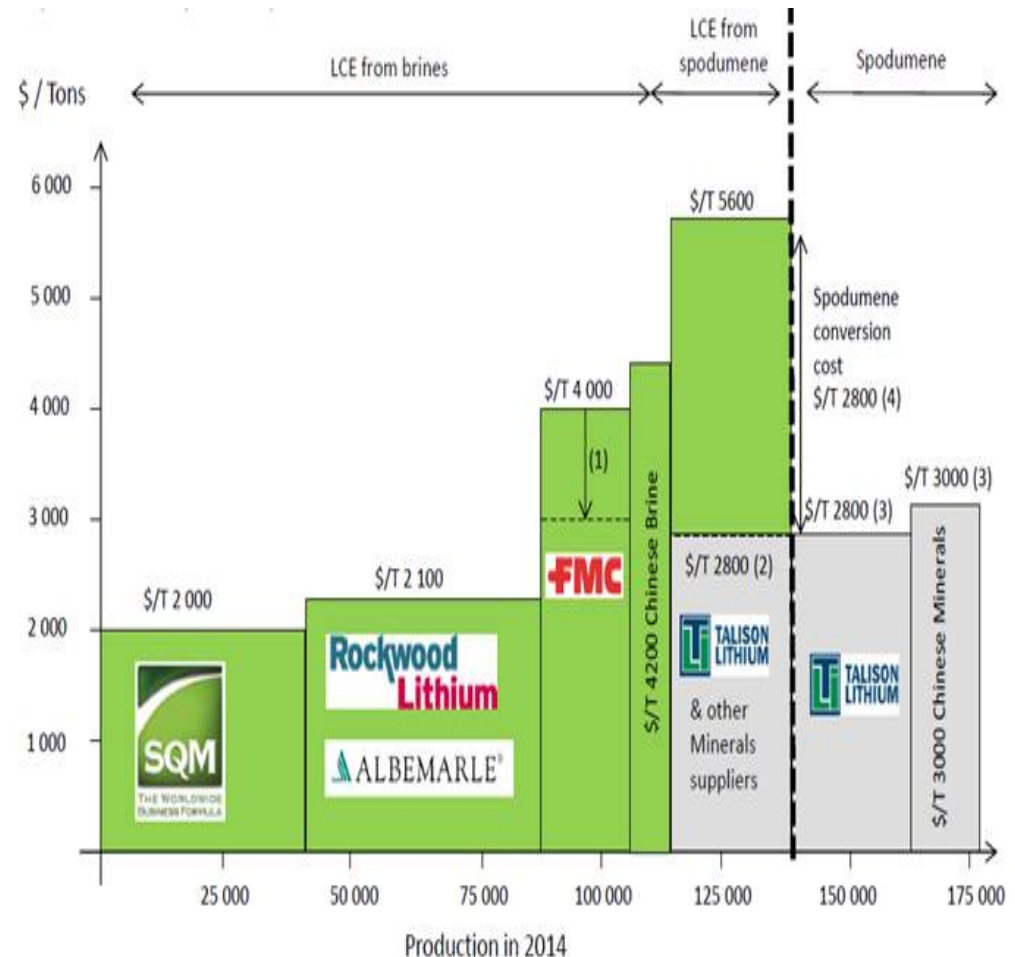
Red Valley Project (Utah, USA)



Red Valley the new Clayton Valley?



- **Clayton Valley, Nevada** holds the **FAMOUS** Silver Peak Mine
- Owned by **Albermarle Corporation** (NYSE: ALB, MC = \$11+ Billion)
- North America's **ONLY** Lithium brine **producer**
- **50 years** in production and **COUNTING**



Lithium Brines operations are lower cost (Pablo Cortesego, SRK Consulting)

Red Valley Project (Utah, USA)



- Red Mountain is chasing USA's second **CONVENTIONAL, ULTRA LONG-LIFE, LITHIUM BRINES PRODUCTION PROVINCE** in a brand new territory
- 6,000 acre Red Valley land package now fully secured in western UTAH
- Drilling to commence, full brine analysis for commercial Lithium enrichment to follow

Clayton Valley vs Red Valley



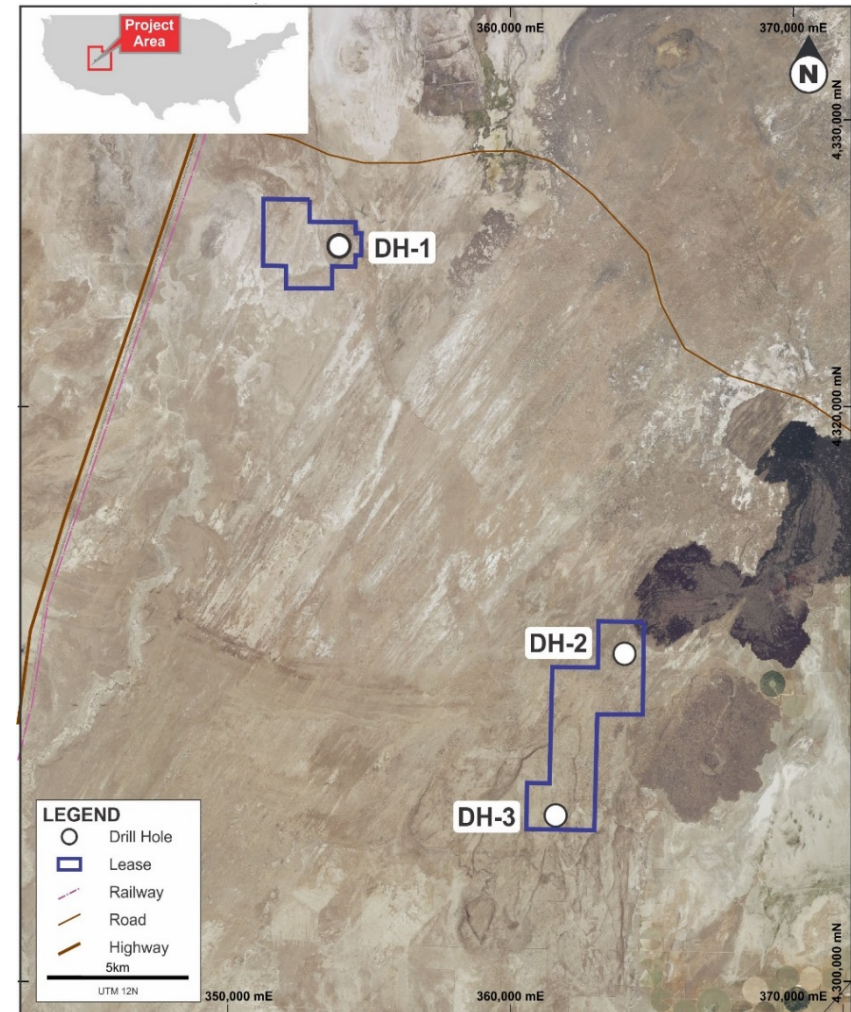
A **REMARKABLE** Clayton Valley lookalike:

GEOLOGICAL CHARACTERISTIC	CLAYTON VALLEY	RED VALLEY
SOURCE - LARGE SCALE LITHIUM - ENRICHED ROCKS	✓	✓
BASIN CONTAINS FINE SEDIMENTS FROM LITHIUM ENRICHED SOURCES	✓	✓
ANOMALOUS LITHIUM IN WATERS	✓	✓
VERTICALLY STABLE - OLD SEDIMENTS OUTCROP AROUND BASIN	✓	✓
POTENTIAL AQUIFERS FROM CYCLICAL SEDIMENTATION	✓	✓
EXTENSIONAL FAULTING	✓	✓
LARGE SCALE FAULTING	✓	✓
TRAVERTINE IN DRILL LOGS	✓	✓
RECENT BASALT VOLCANISM	✓	✓

Red Valley Drilling Program



- Drilling a total of **THREE** 1,000 foot RC wells, located at strategic locations across **6,000 ACRE HOLDING**
- Estimated 25 day drilling programme
- Eastern holes to be drilled first (Holes 1 & 2)
- **EXPERIENCED** local drillers, Grimshaw Drilling, appointed as contractors
- ALS Life Sciences & WETLAB AS laboratories engaged for brine analysis



Red Valley drillhole locations

Red Valley Drilling Program



Following in the footsteps of early stage lithium exploration at Clayton Valley



Rotary drill rig -- Clayton Valley

OPEN HOLE ROTARY DRILLING

- swift and economic
- useful in determining:
 - upper & lower limits of aquifers
 - potential economic concentrations of lithium
 - sedimentary patterns of aquifers & aquipermes

Red Valley Drilling Program



- Water and drill chip samples to be collected at every 10 feet
- 1300+ bottles expected to be used for sampling
- 15 - 20 business day turnaround expected for laboratory analysis



Collecting brines samples -- Clayton Valley

Red Valley Drilling Program

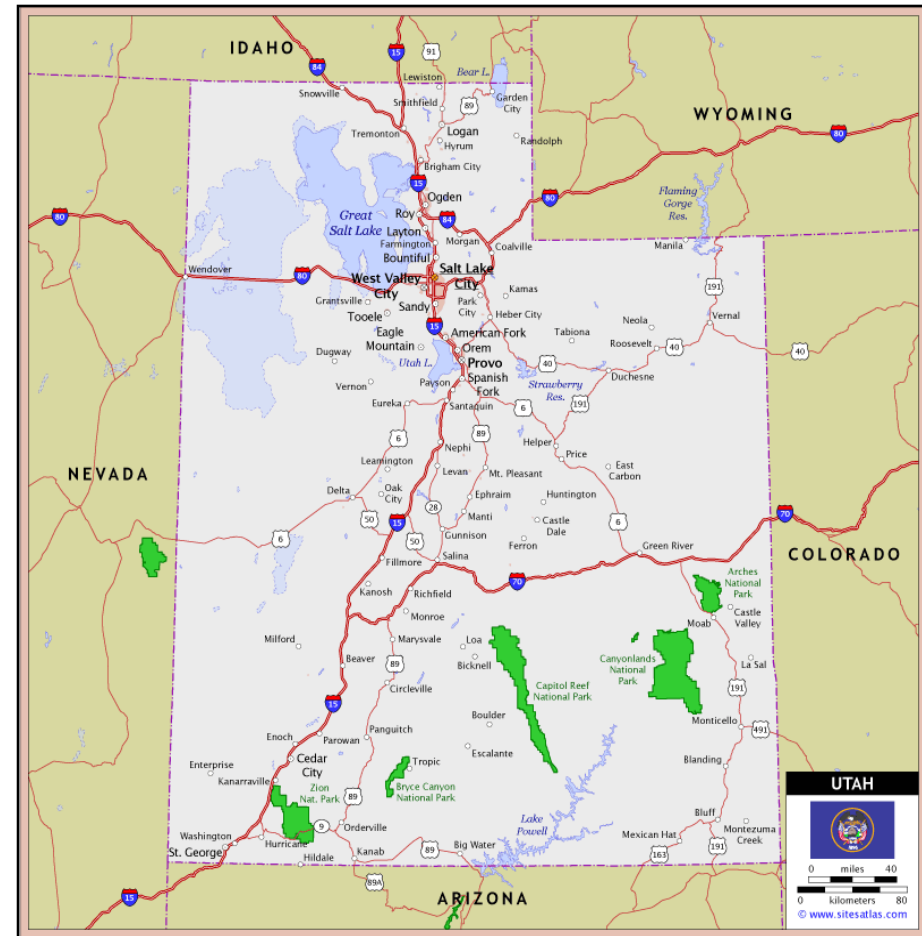


Red Valley project boundary markers

UTAH - A Mining Jurisdiction



- Voted **TOP 10** mining jurisdiction in the world, 2015
- **BACKYARD OF TESLA**, Faraday electric car plants in Nevada
- Tesla seeking to source lithium **EXCLUSIVELY** from North America
- Power, high-quality roads, workforce, rail, all **on doorstep** to project



Funded to Test . . . and Buy



- Last year, RMX was **FULLY FUNDED** for ‘TRY BEFORE YOU BUY’ phase
 1. DRILL
 2. GET RESULTS
 3. THEN, CHOICE TO ACQUIRE
- Recent injection of capital provides RMX ability to acquire major interest in Red Valley project **AND fund** follow-up work:
 - 51% OF RED VALLEY PROJECT FOR US\$250,000
 - OPPORTUNITY TO EARN-IN UP TO 80% BY \$\$\$ IN THE GROUND

Red Valley JV Partner



Bill Feyerabend (B.Sc Geology)

- Arizona-based certified professional geologist for over 40 years
- **Vast experience within the global Lithium Sector**
- Author of expert reports for Clayton Valley players:
 - Lithium-X (mc: c\$100m)
 - Pure Energy (mc: c\$52m)



On-site at the Red Valley Project



Brendan Borg (B.Sc Geology)

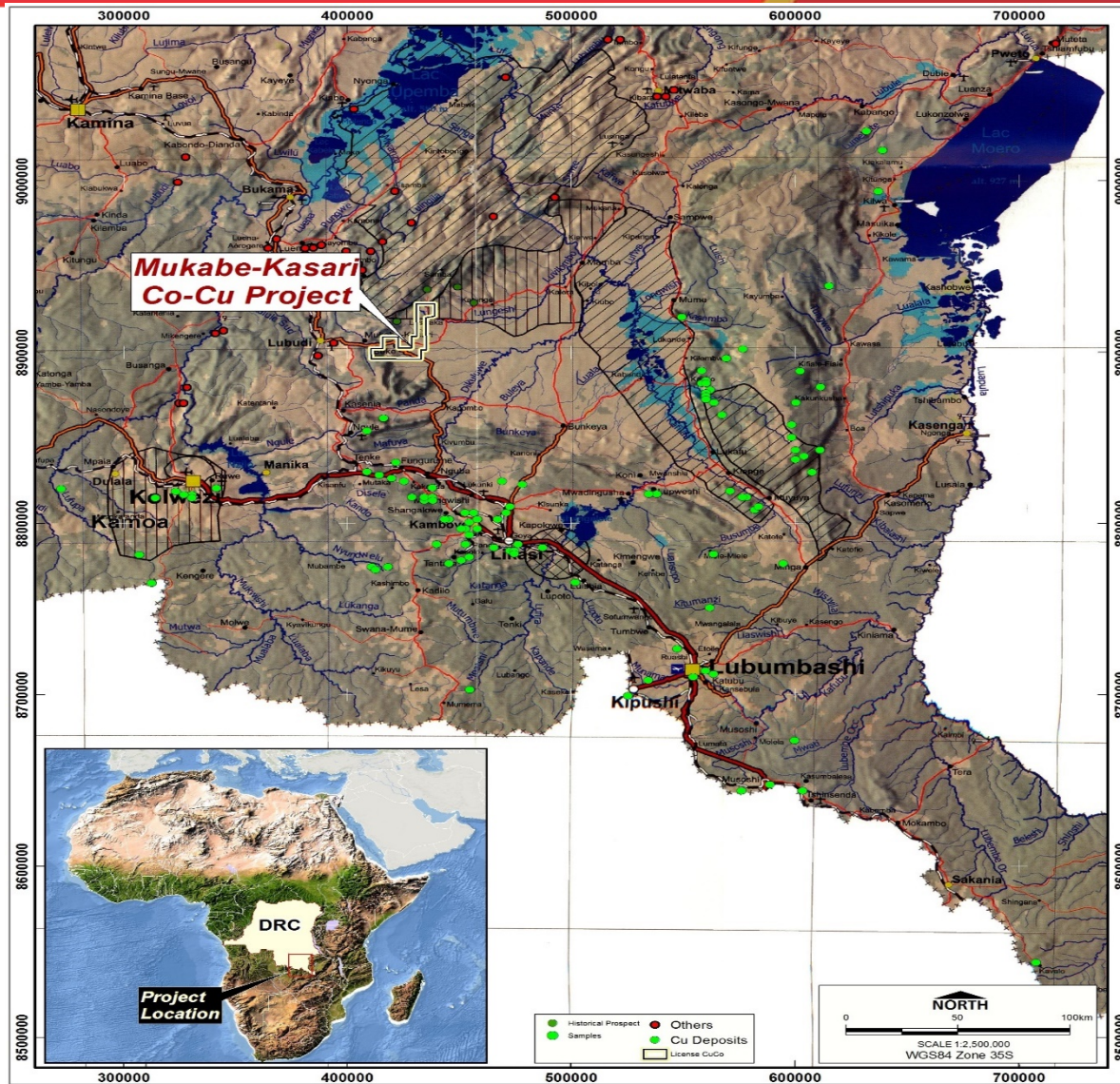
- Masters in Hydrogeology (2006)
- Director & Principal Consultant of Borg Geoscience
- Technical Consultant for a number of ASX-listed lithium companies

Red Valley Project Milestones



- ✓ Securing large land tenure footprint
- ✓ Performing required local archeological survey
- ✓ Lodge required drill permit applications
- ✓ Drill permit approval
- ? Commencement of drilling on Red Valley ground
- ? Submit assays to independent laboratories
- ? Purchase of 51% on project (at RMX's election)

Mukabe-Kasari Cobalt Project (DRC)



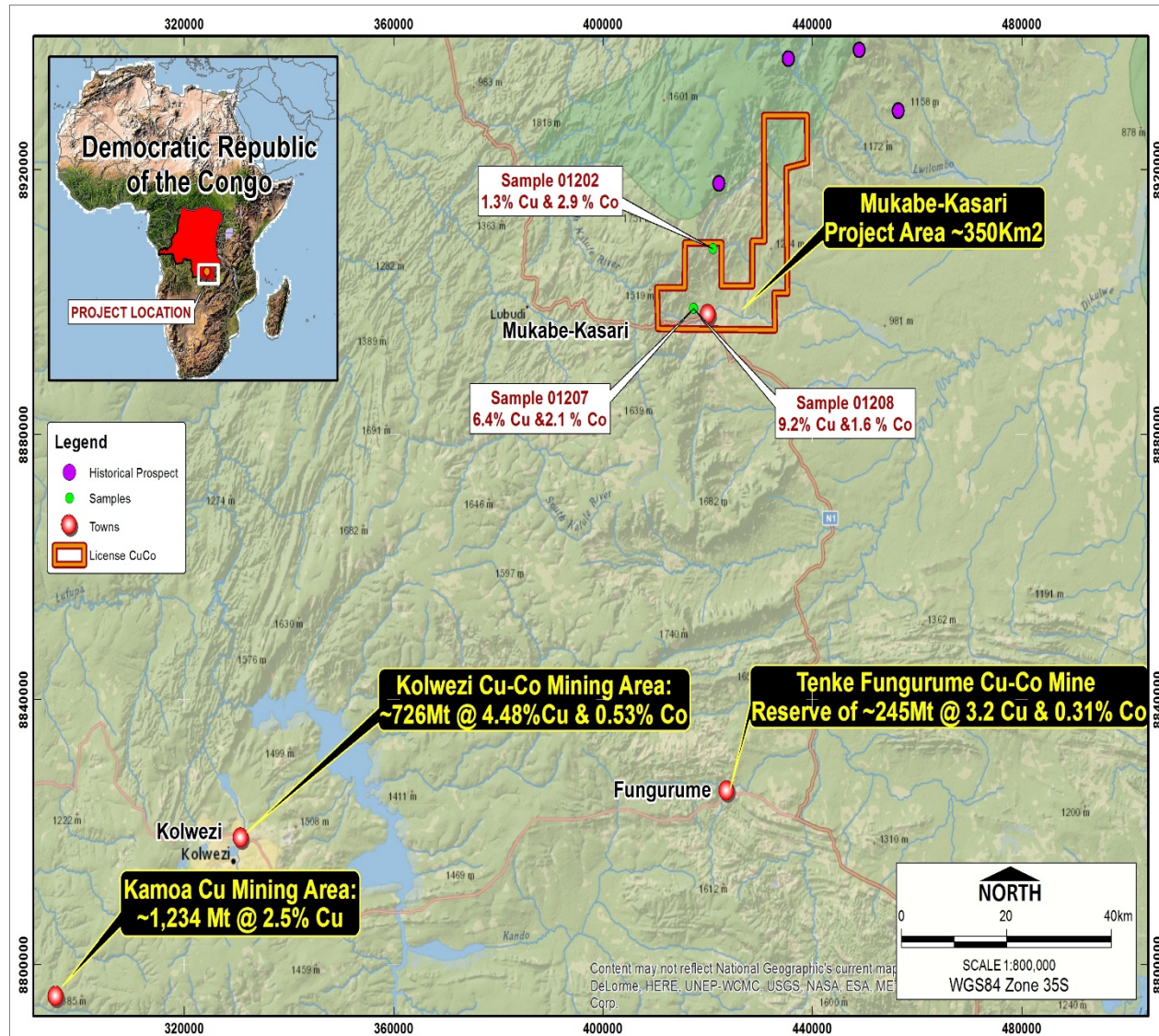
THE RED VALLEY PROJECT – UTAH

Mukabe-Kasari Project (DRC)



High Grade Cobalt Project

- Total project area comprising 350km²
- ~50km north of world famous Tenke Fungurume Cu-Co Mine
- ~110km north-east of Kolwezi Cu-Co mining district
- Good infrastructure -- roads, power & water



Mukabe-Kasari Project (DRC)



- Local artisanal mining at the Project demonstrates mineralization.
- Reconnaissance grab samples were collected. Laboratory results have provided an average grade of Cobalt of between 1.6% and 2.9% and of Copper of 1.3% to 9.2%.

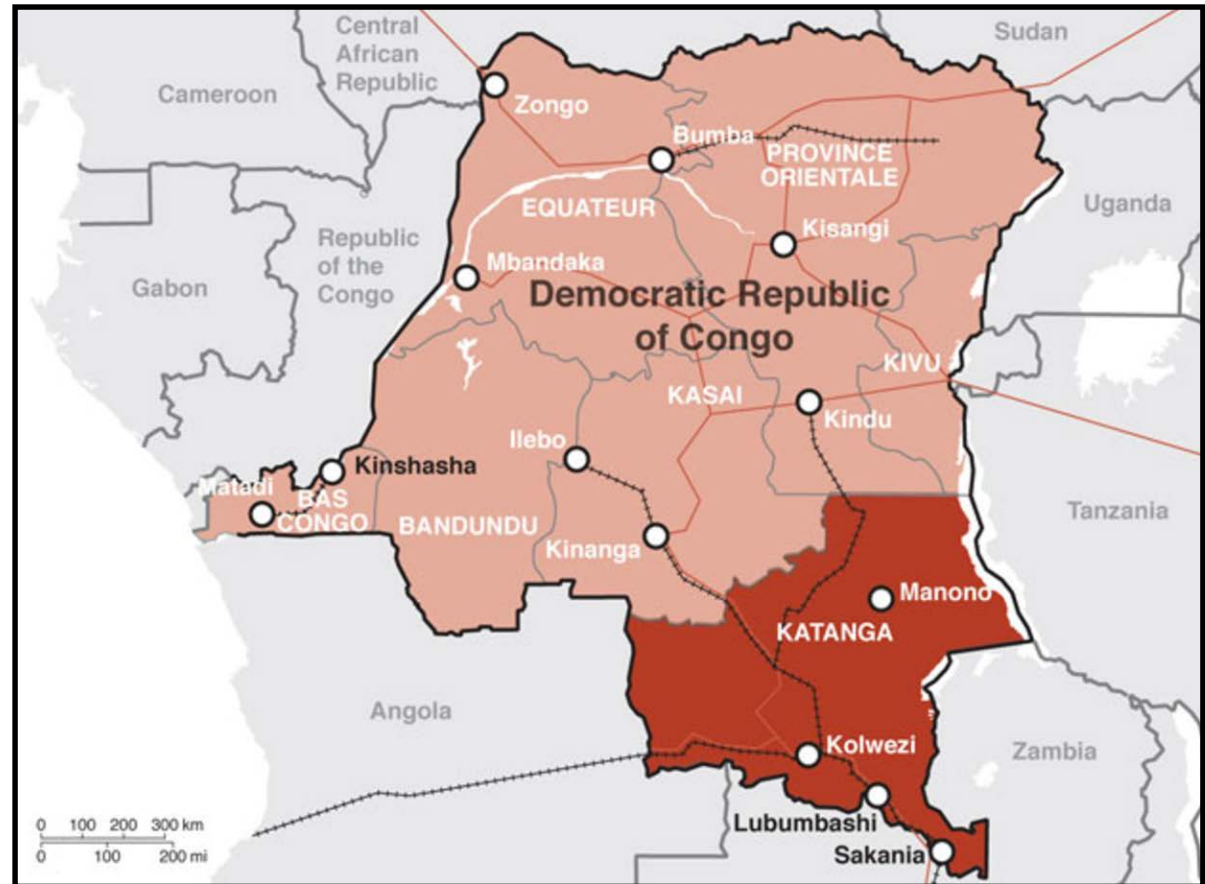
RESULTATS DU LABORATOIRE D'ANALYSES CHIMIQUES				
N ^o	SAMPLE ID	Cu (%)	Co (%)	Méthode
1	01202	1.3	2.9	AAS
2	01207	6.4	2.1	AAS
3	01208	9.2	1.6	AAS

Recent (2017) assay results

Why the DRC?



- The DRC holds the world's largest supply source of cobalt
- Roughly 63% of global cobalt supply originates in the DRC



Mukabe-Kasari Project (DRC)



- Attractive terms negotiated
- 6 week DD period, **THEN** option to earn-in
- CSA Global engaged to perform due diligence – **HIGHLY EXPERIENCED** in the region
- Staged deal terms provide **OPTIONALITY** for RMX

Phase	Exploration Expenditure	CoCu Interest	RMX Interest
Commencement Date	Nil	100%	0%
First Earn-in	A\$250,000	80%	20%
Second Earn-in	A\$250,000	65%	35%
Third Earn-in	\$500,000	49%	51%
Fourth Earn-in	A\$1.5m	34%	66%
Fifth Earn-in	A\$3.0m	20%	80%¹

Unlocking Potential . . .



RMX

market capitalisation ~ \$12 million

Red Valley **Lithium Brines** Project

- Opportunity to **CONTROL** next lithium brine province in USA
- Large acreage position staked
- Scout drilling campaign imminent

Mukabe-Kasari **Cobalt-Copper** Project

- 350km² in world class geo-metallic domain
- ~50km from world famous cobalt mine
- High cobalt/copper grades from grab samples
- Attractive deal terms
- DD before earn-in

Disclaimer



Competent Person Statement

Information in this report that relates to Exploration results has been compiled from historic data by Mr. Simon Dorling, who is a member of the Australian Institute of Geoscientists. Mr. Dorling is a consultant to Red Mountain, and has sufficient experience relevant to the style of mineralisation and type of deposit under consideration and to the activity which he is undertaking to qualify as a Competent Person as defined by the 2012 Edition of the Australasian Code for Reporting of Exploration Results, Mineral Resources and Ore Reserves.

The Company confirms that the form and context in which the Competent Person's findings are presented have not been modified from the original announcement and have not materially changed. Mr. Dorling consents to the inclusion of the data in the form and context in which it appears.