

19 APRIL 2017

RRL1516D

Drilling Commences at Fisher East

Key Points

- **Fisher East RC drilling program** to test compelling targets at the Cutlass, Sabre North, Tomahawk, Mt Tate, Horatio, and Claymore prospects commenced over the Easter weekend
- **Fisher East diamond drilling program** scheduled to commence in early May 2017 to test for further massive nickel sulphide potential at Sabre, extend Camelwood massive sulphides at depth, and to test a downhole EM conductor along strike at Musket
- **Mount Fisher gold project aircore drilling program** has been completed

Rox Resources Limited (ASX: RXL) ("Rox" or "the Company") is pleased to provide an update on its exploration activities previously reported (ASX:RXL 10 April 2017).

Mt Fisher Gold Project

The aircore drilling program at Mt Fisher (by farm-in partner Doray Minerals) of 12,052m in 254 holes has been completed. The program targeted structural positions for gold mineralisation. Assay results are expected in 4-6 week's time.

Fisher East Nickel Sulphide Project

Current planning is for 1,800m of RC and 3,350m of diamond drilling.

The RC program commenced over the Easter weekend and the diamond drilling program is expected to commence in early May. All drilling is expected to be completed by mid-June.

Rox Managing Director, Mr Ian Mulholland said "We are excited about the high quality drill targets at Fisher East and we will report the assay results as they come in."

"Like zinc a few years ago, nickel is now predicted to undergo a significant price rise within 2-3 years, which will make nickel sulphide projects like Fisher East extremely attractive."

ENDS

For more information:

Shareholders/Investors

Ian Mulholland
 Managing Director
 Tel: +61 8 9226 0044
 admin@roxresources.com.au

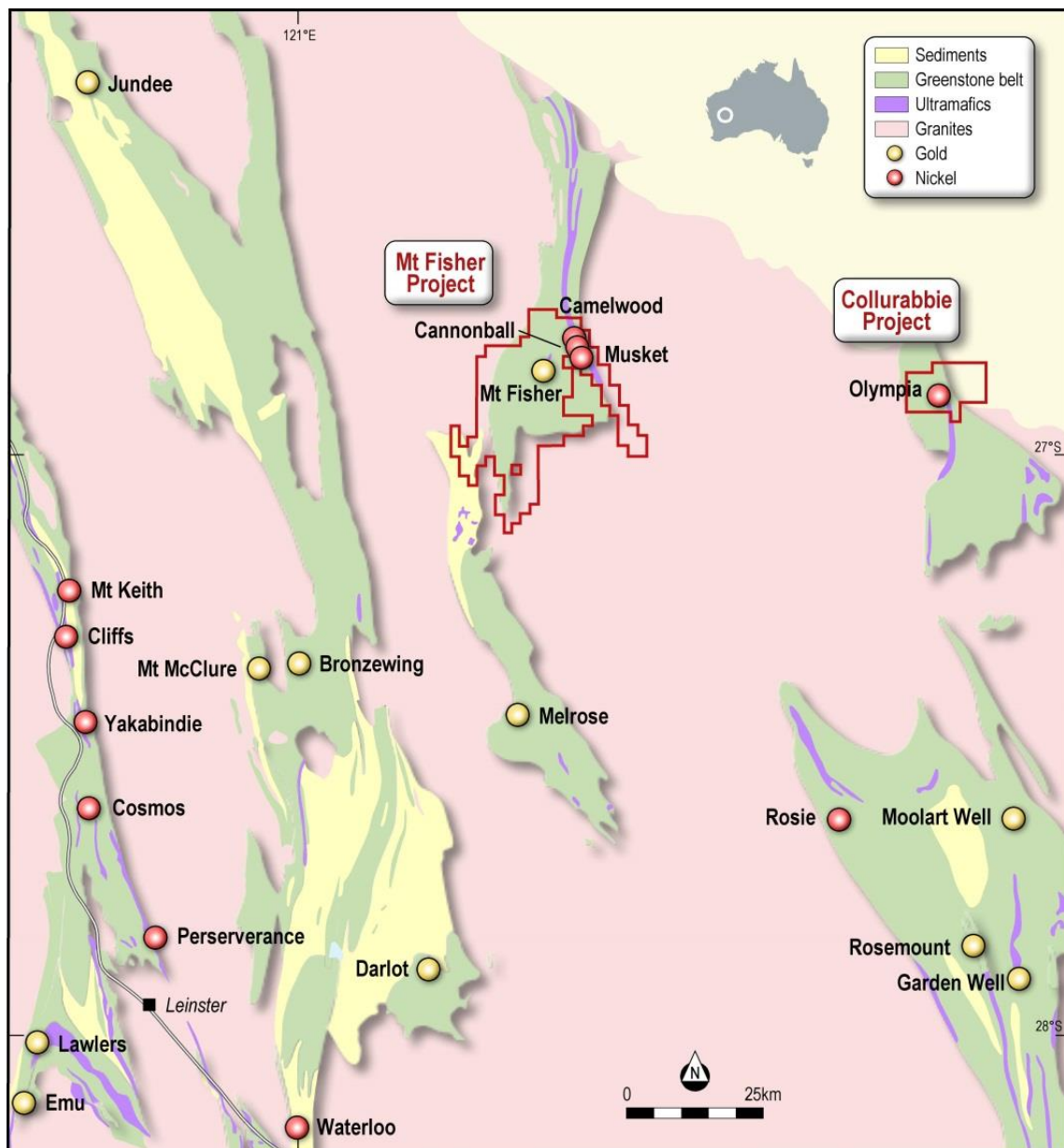


Figure 1: Project Locations

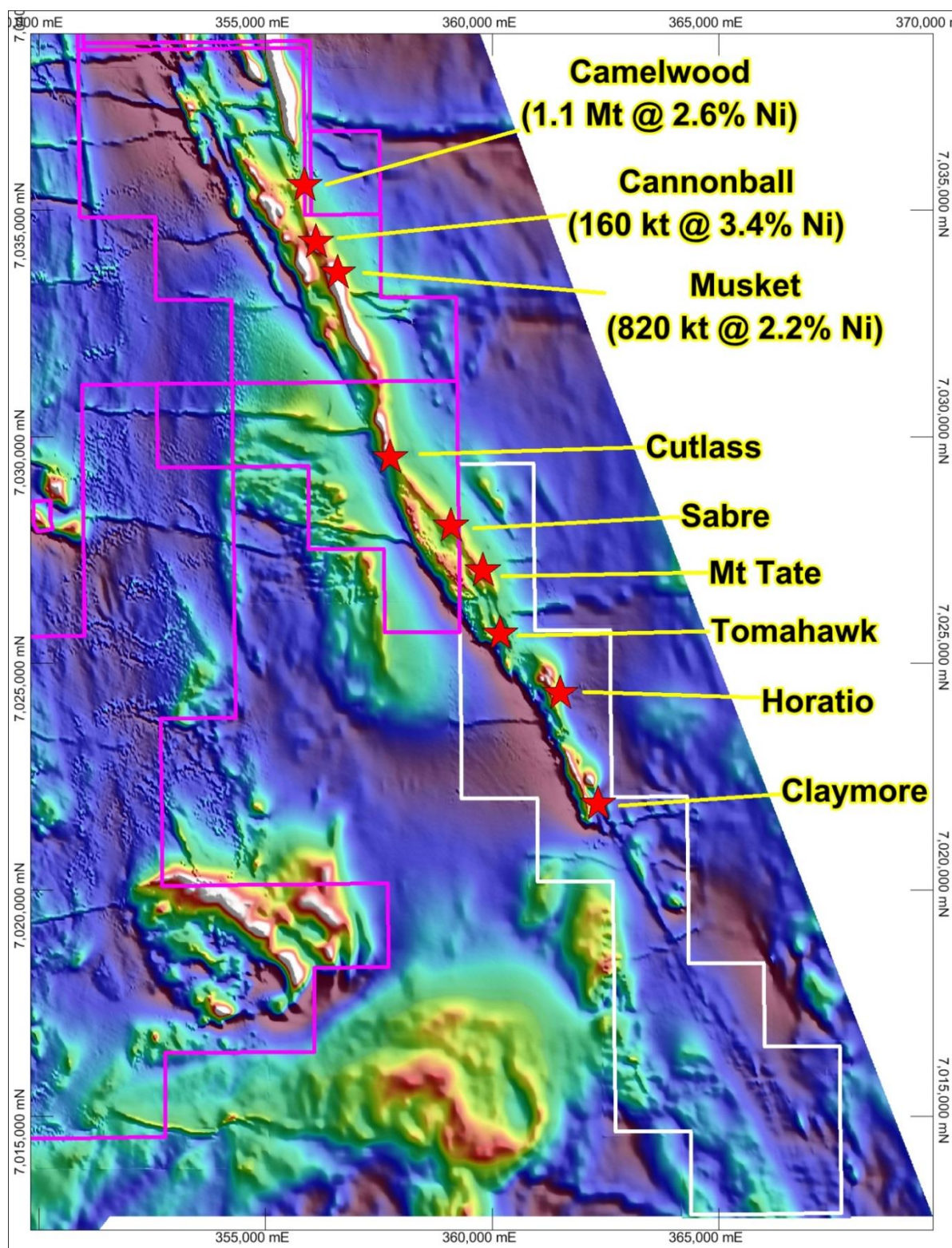


Figure 2: Fisher East Prospect Locations (Mineral Resources shown at a 1.5% Ni cut-off, as per ASX:RXL 5 February 2016)

About Rox Resources

Rox Resources Limited is an emerging Australian minerals exploration company. The company has a number of key assets at various levels of development with exposure to gold, nickel, copper and platinum group elements (PGE's), including the Mt Fisher Gold Project (WA), the Fisher East Nickel Project (WA), the Collurabbie Nickel-Copper-PGE Project (WA), and the Bonya Copper Project (NT).

Mt Fisher Gold-Nickel Project (100% + Option to Purchase)

The Mt Fisher project is located in the highly prospective North Eastern Goldfields region of Western Australia and in addition to being well endowed with gold, the project hosts several nickel sulphide deposits. The total project area is 675km², consisting of a 600km² area 100% owned by Rox and an Option to purchase 100% of a further 75km² of nickel and gold prospective ground.

Discovery of, and drilling at the Camelwood, Cannonball and Musket nickel prospects has defined a JORC 2012 Mineral Resource (ASX:RXL 5 February 2016) of **4.2Mt grading 1.9% Ni** reported at 1.0% Ni cut-off (Indicated Mineral Resource: 3.7Mt grading 1.9% Ni, Inferred Mineral Resource: 0.5Mt grading 1.5% Ni) comprising massive and disseminated nickel sulphide mineralisation, and containing **78,000 tonnes of nickel**. Higher grade mineralisation is present in all deposits (refer to ASX announcement above), and is still open at depth beneath each deposit. Additional nickel sulphide deposits continue to be discovered (e.g. Sabre) and these will add to the resource base. Exploration is continuing to define further zones of potential nickel sulphide mineralisation.

Drilling by Rox has also defined numerous high-grade gold targets and a JORC 2004 Measured, Indicated and Inferred Mineral Resource (ASX:RXL 10 February 2012) of **973,000 tonnes grading 2.75 g/t Au** reported at a 0.8 g/tAu cut-off exists for **86,000 ounces of gold** (Measured: 171,900 tonnes grading 4.11 g/t Au, Indicated: 204,900 tonnes grading 2.82 g/t Au, Inferred: 596,200 tonnes grading 2.34 g/t Au) aggregated over the Damsel, Moray Reef and Mt Fisher deposits.

A joint venture has been signed with Doray Minerals Limited ("Doray") to explore the Mt Fisher gold tenements (ASX:RXL 16 May 2016), with Doray required to spend \$1 million within the first year. Following that Doray can spend \$4 million over a further two years to earn a 51% interest, and increase its interest to 75% by expenditure of a further \$5 million over an additional two years.

Collurabbie Gold-Nickel Project (100%)

The Collurabbie project is located in the highly prospective North Eastern Goldfields region of Western Australia and is prospective for gold and nickel. The project area of 123km² hosts the Olympia nickel sulphide deposit and a number of other prospects for nickel sulphide mineralisation. Drilling results of **5.8m @ 3.00% Ni, 1.96% Cu, 5.3g/t PGE**, have been returned from Olympia. The style of nickel sulphide mineralisation is different to that at Fisher East, with a significant copper and PGE component at Collurabbie, and has been compared to the Raglan nickel deposits in Canada (>1Mt contained nickel).

In addition there is potential for gold mineralisation, with several strong drilling intersections including **2m @ 5.2g/t Au** from the Naxos prospect.

Bonya Copper Project (51% + Farm-in Agreement to earn up to 70%)

Rox (51%) is exploring the Bonya Copper Project located 350km east of Alice Springs, Northern Territory, in joint venture with Arafura Resources Limited (49%) (ASX:ARU). Outcrops of visible copper grading up to 34% Cu and 27 g/t Ag are present, with the style of mineralisation similar to the adjacent Jervois copper deposits (see ASX:KGL). Drill testing has intersected visible copper mineralisation at three prospects, with massive copper sulphides intersected at the Bonya Mine prospect, including **38m @ 4.4% Cu and 11m @ 4.4% Cu** (ASX:RXL 20 October 2014, 5 November 2014, 1 December 2014).

Under the Farm-in Agreement Rox has earned a 51% interest in the copper, lead, zinc, silver, gold, bismuth and PGE mineral rights at Bonya after spending \$500,000 (ASX:RXL 16 December 2014). Rox is earning a further 19% (for 70% in total) by spending a further \$1 million by 10 December 2017.

Competent Person Statements:**Resource Statements**

The information in this report that relates to nickel Mineral Resources for the Fisher East project was reported to the ASX on 5 February 2016 (JORC 2012). Rox confirms that it is not aware of any new information or data that materially affects the information included in the announcement of 5 February 2016, and that all material assumptions and technical parameters underpinning the estimates in the announcement of 5 February 2016 continue to apply and have not materially changed.

The information in this report that relates to gold Mineral Resources for the Mt Fisher project was reported to the ASX on 10 February 2012 (JORC 2004). Rox confirms that it is not aware of any new information or data that materially affects the information included in the announcement of 10 February 2012, and that all material assumptions and technical parameters underpinning the estimates in the announcement of 10 February 2012 continue to apply and have not materially changed.

General

The information in this report that relates to previous Exploration Results for the Bonya and Collurabbie projects, was either prepared and first disclosed under the JORC Code 2004 or under the JORC Code 2012, and has been properly and extensively cross-referenced in the text to the date of original announcement to ASX. In the case of the 2004 JORC Code Exploration Results and Mineral Resources, they have not been updated to comply with the JORC Code 2012 on the basis that the information has not materially changed since it was last reported.