



ASX Announcement

27 April 2017

All 10 Boorara Holes Drilled Intersect Mineralised Zone 30 metres at 1.72* g/t Gold

- ▶ Since February all eight (8) diamond and two (2) reverse circulation holes drilled into the mineralised quartz dolerite system of the Southern Stockwork has increased the strike length to 330 metres and to a depth of 250 metres vertical.
- ▶ The recent drill results from four completed holes highlight the ongoing and continuing depth and strike extensions of the Boorara Southern Stockwork deposit, including:

▪ BODH 029	35 - 102m	67m @ 1.02 g/t
▪ BODH 030	31 - 59m	28m @ 1.59 g/t
▪ BODH 031	75 - 93m	18m @ 1.54 g/t
▪ Incl	76 - 77m	1m @ 10.25 g/t
	169 - 198m	29m @ 1.22 g/t
▪ Incl	171 - 172m	1m @ 10.95 g/t
	201 - 238m	37m @ 1.12 g/t
	246 - 288m	42m @ 1.32 g/t
▪ BODH 032	35 - 65m	30m @ 1.72 g/t
	79 - 86m	7m @ 1.27 g/t

- ▶ Diamond drilling results continue to confirm current geological model and understanding of mineralisation geometry.
- ▶ Scale of alteration and mineralisation seen in all holes drilled to date continue to be indicative of a large scale gold system.
- ▶ Possible 1,500 metres of strike length over the known Boorara gold project containing three identified deposits will be drill tested using new 115° drill azimuth.
- ▶ Boorara Gold Project is in close proximity to infrastructure and nearby gold treatment operations.

*composite interval >0.3 g/t bottom cut-off, includes up to 2m of internal dilution as host rock and mineralisation and alteration similar down hole.

MacPhersons Resources Limited (ASX: MRP) is pleased to announce the results of four (4) diamond drill holes drilled at the Boorara Project to support the outstanding result previously reported at BODH 025 of 163 metres (m) grading 1.94 grams per tonne (g/t) with a top-cut to 24 g/t. These new results confirm an extension of the Boorara Southern Stockwork deposit at a vertical depth below 250 metres from the surface and 170 metres north and 160 metres south along strike from BODH 025 – total strike length 330 metres (see ASX release of BODH 025 dated 14 February 2017).

The Boorara trial pit completed in October 2016 to a depth of 20 metres is a further 30 metres north of the most northern drill hole drilled to date BODH 031. Mining exposed a 20 metre wide zone in the pit floor which was 100 metres in length with mineralisation exposed in the north and south ends of the pit.

The ongoing drilling strategy is test the geology model and scope out the extent of mineralisation associated with diamond hole BODH 025 with wide 40 metre spaced holes. All significant gold intersections reported to date are associated with long drill intervals of consistent weak to strong pervasive hematite alteration, iron carbonate alteration, NW dipping quartz vein with >1% pyrite and >1% arsenopyrite mineralisation.

Gold mineralisation is hosted in a series of stacked quartz vein arrays that dip at 35° to the north west. The true thickness of the arrays is up to 50 metres vertical and which are hosted within the quartz dolerite which dips at 73° to the north east and has a true width of up to 25 metres.

The scale of alteration and mineralisation intercepted by drilling to date is typical and indicative of a large scale gold mineralised system. The iron carbonate alteration and pyrite mineralisation within the dolerite host -can be traced for 1.5 km along strike from the current Southern Stockwork drilling to the north at the historical Cataract gold mine workings situated within the Northern Stockwork deposit.

Drill holes were planned as:

- BODH 029 was collared in dolerite (5 metres grid east of BORC 173) and drilled across the contact at an azimuth of 128°.
- BODH 030 collared in dolerite (40m grid south of BODH 028) and drilled across the contact at an azimuth of 115°.
- BODH 031 collared in dolerite (50m grid north of BORCD 174, 30m south of trial pit) and drilled across the contact at an azimuth of 115°.
- BODH 032 collared in dolerite (40m grid south of BODH 030) and drilled across the contact at an azimuth of 115°

Summary of composite drill results >0.3 g/t with a maximum of 2 metres internal dilution;

BODH 029	35 - 102m	67m @ 1.07 g/t
	107 - 151m	44m @ 0.83 g/t
	215 - 287m	72m @ 0.96 g/t
BODH 030	31- 59m	28m @ 1.59 g/t
	67 - 74m	12m @ 1.06 g/t
	79 - 118m	39m @ 0.78 g/t

BODH 030	121 - 129m	8m @ 1.12 g/t
	146 - 165m	19m @ 1.23 g/t
BODH 031	2 - 11m	9m @ 0.95 g/t
	14 - 19m	5m @ 1.96 g/t
	75 - 93m	18m @ 1.54 g/t
Incl	76 - 77m	1m @ 10.25 g/t
	106 - 109m	3m @ 2.68 g/t
	124 - 126m	2m @ 3.92 g/t
	169 - 198m	29m @ 1.22 g/t
Incl	171 - 172m	1m @ 10.95 g/t
	201 - 238m	37m @ 1.12 g/t
	246 - 288m	42m @ 1.32 g/t
Incl	265 - 266m	1m @ 9.84 g/t
Incl	285 - 286m	1m @ 10.05 g/t
BODH 032	35 - 65m	30m @ 1.72 g/t
	79 - 86m	7m @ 1.27 g/t
	124 - 133m	9m @ 0.86 g/t

Drilling Progress on site

The Company has contracted the diamond drill rig to continue diamond drilling on the same azimuth 115° and dip -60° to test the strike extent of mineralisation, test the current geology model and scope out the extent of mineralisation associated with the first successful diamond hole BODH 025 (163 metres grading 1.94 g/t cut).

Managing Director Jeff Williams today commented: "The latest drill results have extended mineralisation to a depth of 250m that is still open at depth with a strike length of 330m within 30m of the Boorara trial pit. We are looking forward to continuing to expand the strike length of mineralisation identified to date at the Southern Stockwork deposit.

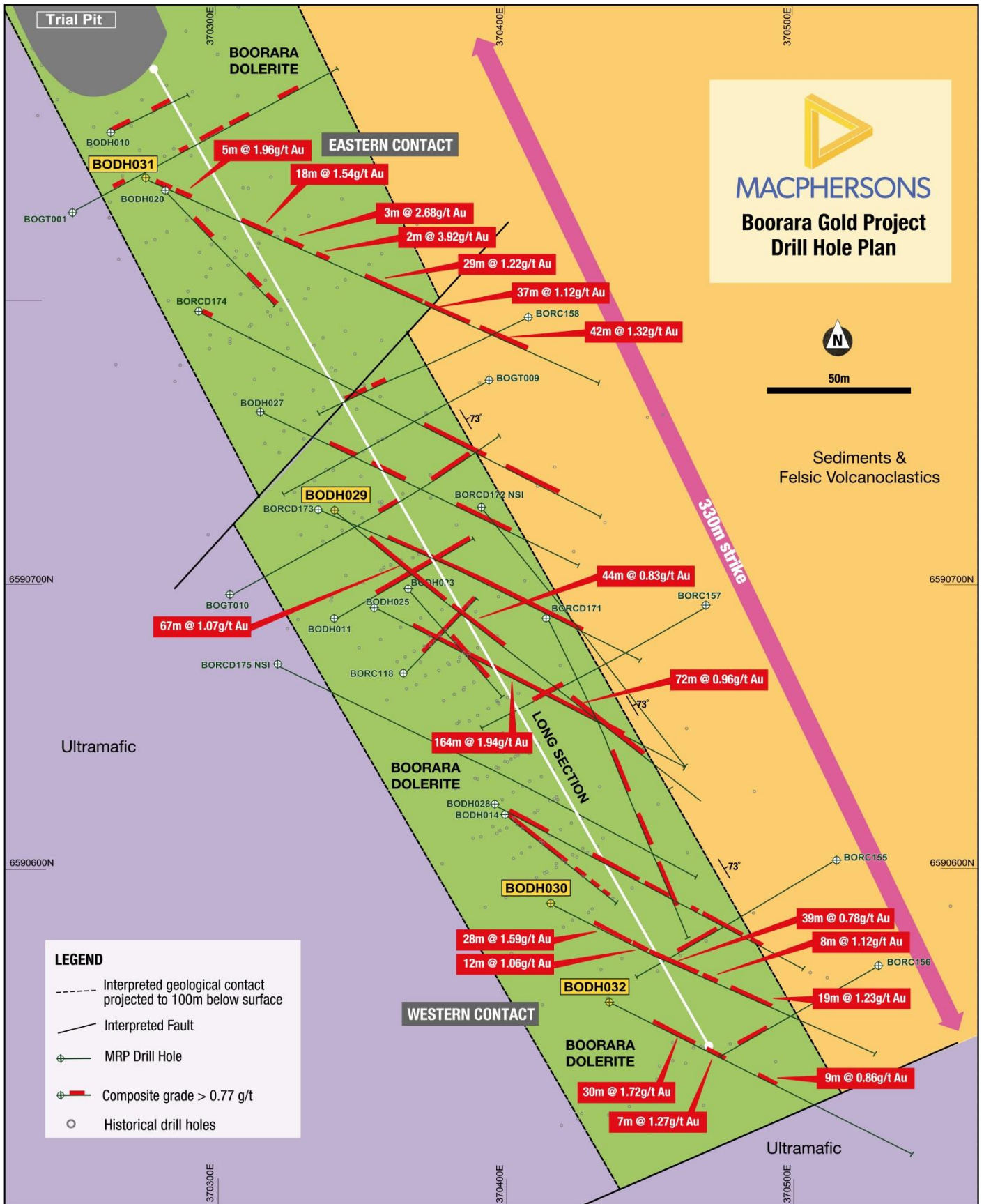


Figure 1: Plan view of BODH 029-032 relative to previously drilled and announced MacPhersons drill holes.

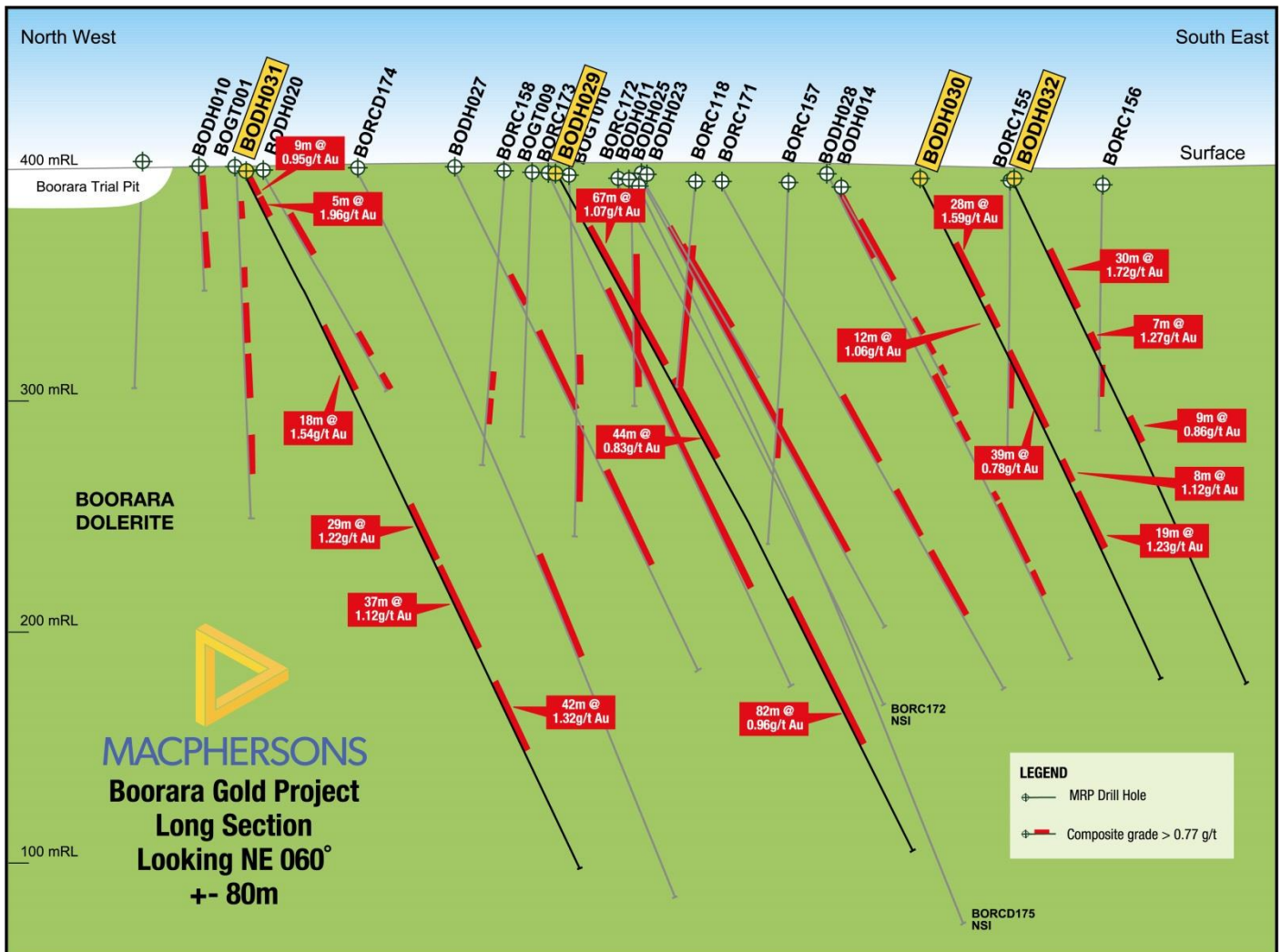


Figure 3: Long section of current drilling

Ongoing Drill Plan

We intend to continue to diamond drill both north and south along strike to identify the extent of mineralisation, and if exhausting the strike extension, we will commence a deeper diamond program to intercept further depth extensions. The future drilling strategy is to continue the step-out 80 metres along the north-south strike and drill at an azimuth of 115 degrees.

Quartz veining logged in diamond drill holes BODH 029, 030, 031 & 032 is associated with high grade gold mineralisation and confirms the dominant quartz vein geometry is shallow NW dipping similar to those seen in the Boorara trial pit (see figure 10).

The current drill program again demonstrated that Boorara gold mineralisation is hosted by quartz-dolerite in moderately NW-dipping quartz-carbonate-sulphide veinlet arrays with iron-carbonate alteration halos controlled by bounding shear zones and late cross faults similar to the 6 million ounce Mount Charlotte gold deposit (part of the nearby Kalgoorlie Golden Mile).

Western Mining Corporation Ltd recognised the importance of drilling perpendicular to the NW dipping quartz veins at Mt Charlotte to better estimate gold grade; this same strategy has been adopted by MacPhersons at Boorara.

Cataract Gold Mine (30,000 oz; 1897-1907) is located one kilometre to the NW of BODH 025 and BORG 173 within the Boorara dolerite. The deposit had two major stope geometries, one striking 040° dipping to the NW and the other striking 330°/90°. The significance of these stope geometries is that structural controls on historically mined high grade gold veins in the NW dipping quartz vein arrays are the same as encountered in the current drilling program.

A recent reinterpretation of the geometry of mineralisation at Boorara is as a result of structural mapping and interpretation of the Boorara Gold Project (Tripp 2017). The new Boorara structural geological model has allowed MacPhersons to make a better estimate of the true gold grade and size of the existing Boorara resource based on an interpretation of mineralised NW-dipping quartz vein arrays. This is verified by structural mapping from the Boorara Trial Pit, and further substantiated by vein orientations in BODH 025.

The dolerite has a potential strike length of 1500 metres. The width of the granophyric dolerite cannot be accurately determined based on drilling to date; it is estimated to be 20 metres in width based on the width of the intersection in BORG 157 - 23 metres grading 2.02 g/t from 114 metres.

The one metre results of drill holes BODH 029 ,030, 031 and BODH 032 can be found in a table as Appendix 1.

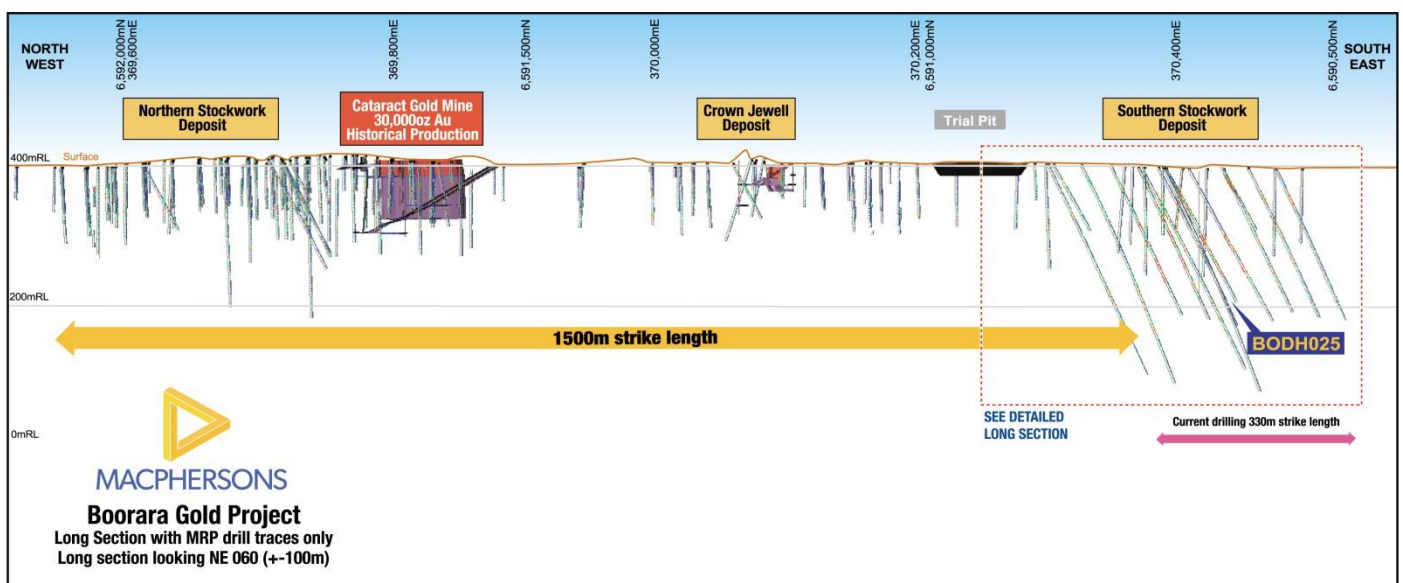


Figure 4: Boorara Project Long Section.

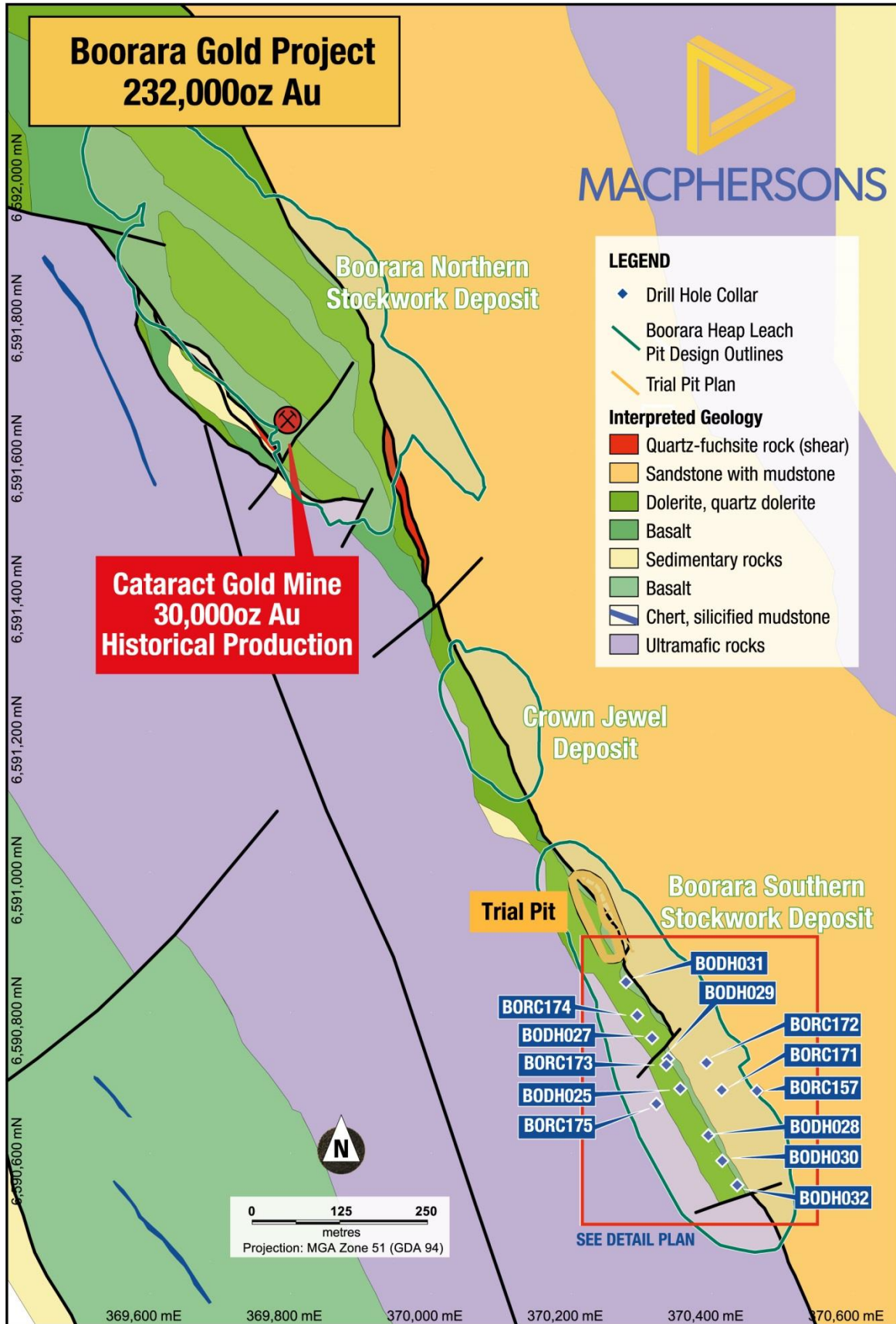


Figure 5: Boorara Gold Project Interpreted Geology Plan.



Figure 6: Diamond Drill Core BODH 029.



Figure 7: Diamond Drill Core BODH 030

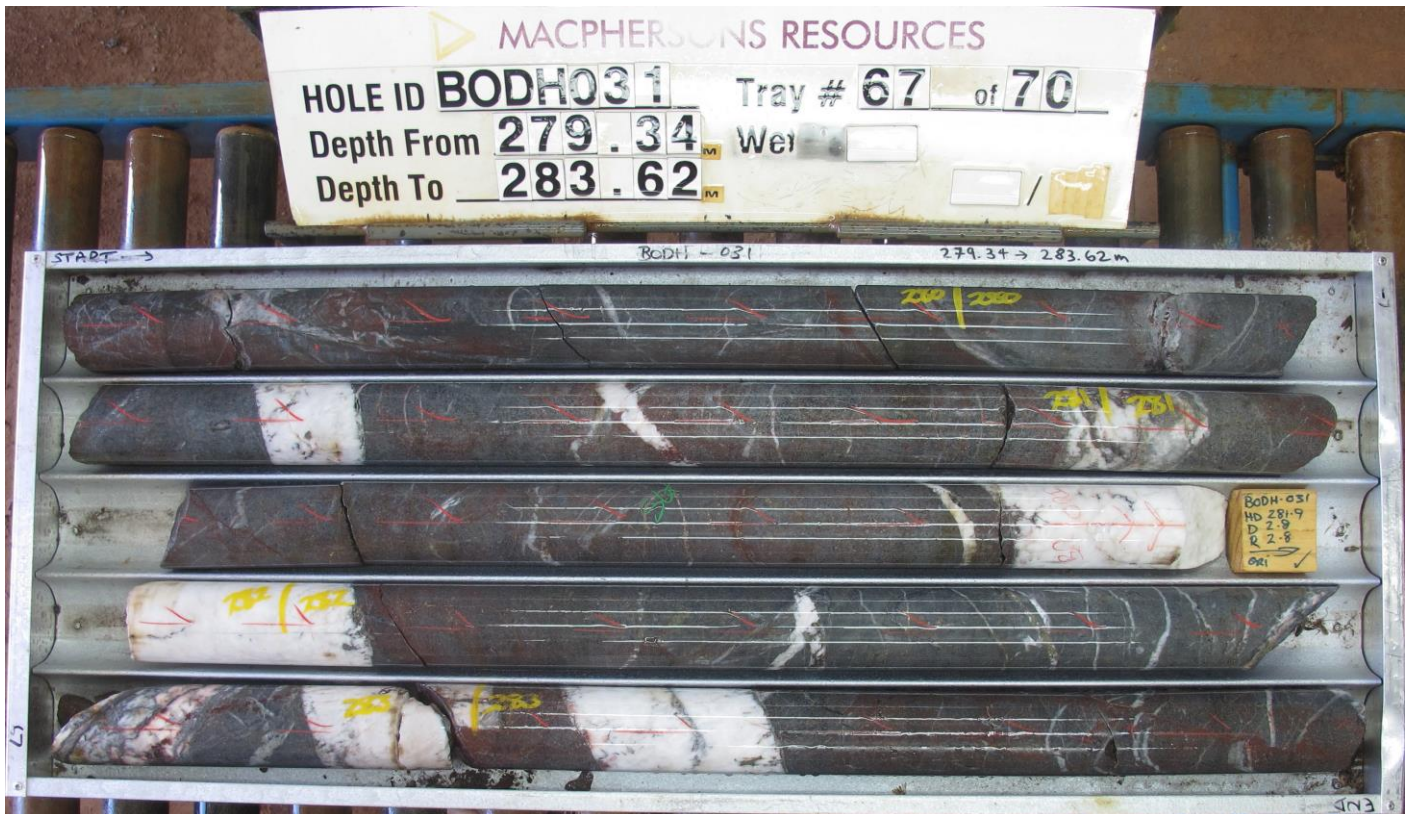


Figure 8: Diamond Drill Core BODH 031

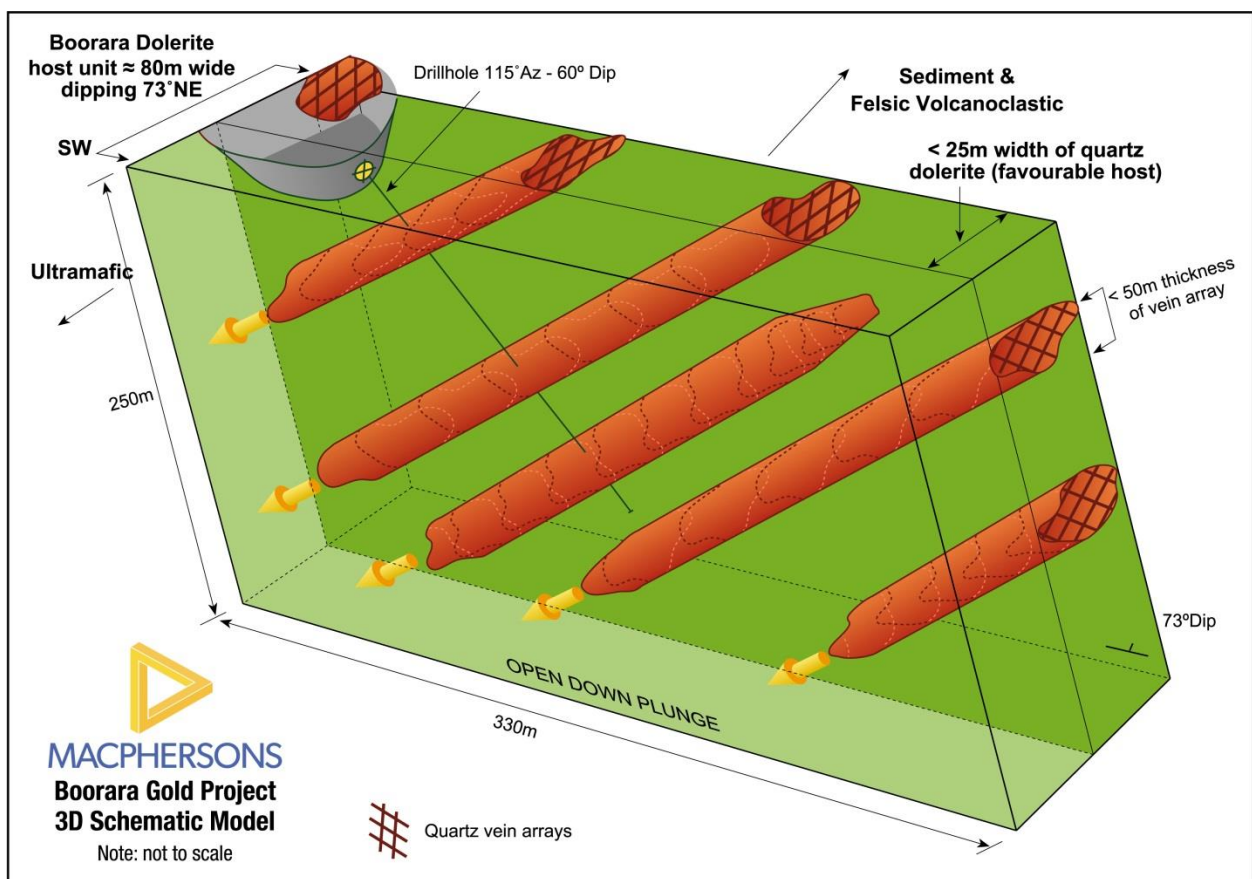


Figure 9: Boorara geological model schematic showing quartz vein arrays and current drill azimuth

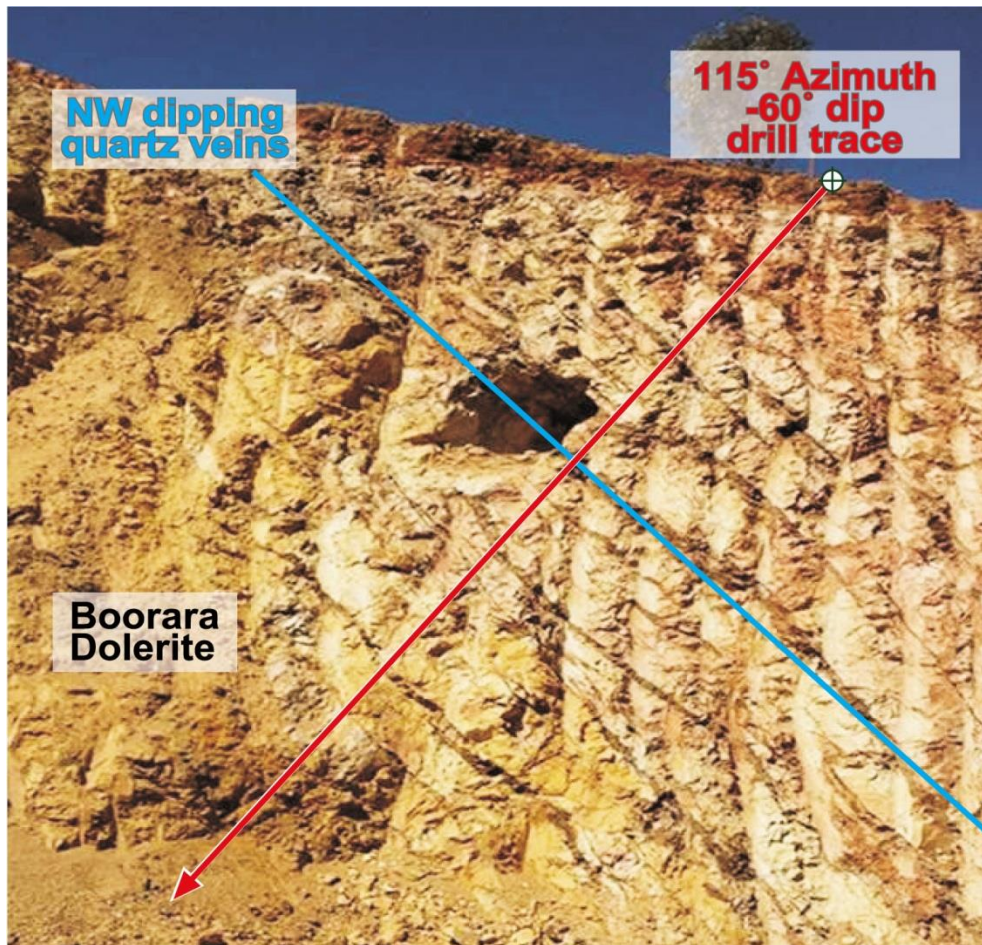


Figure 10: NW dipping quartz vein array in Boorara trial pit and the current drill azimuth and dip.

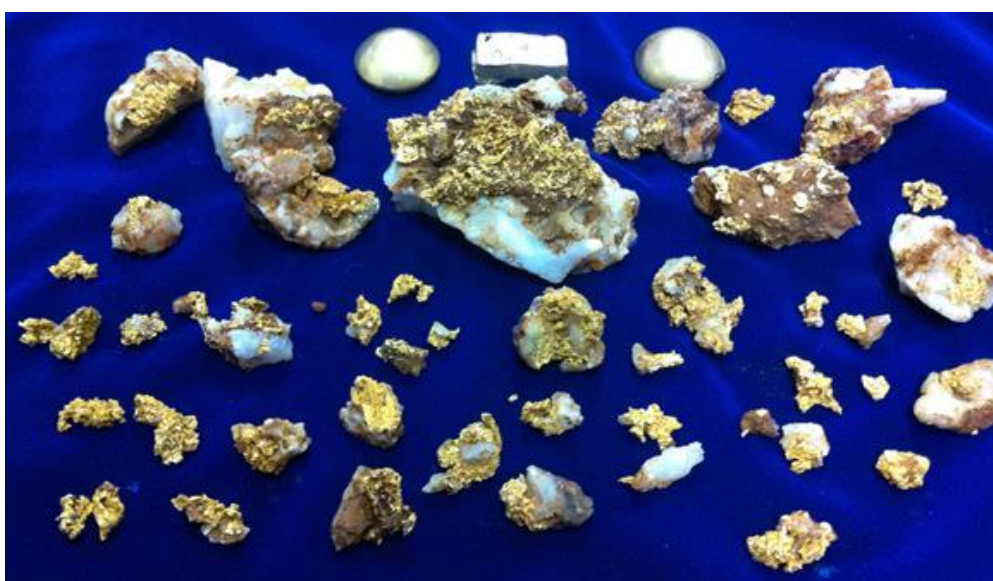


Figure 11: 25 ounces of coarse gold recovered from a NW dipping quartz vein in Boorara trial pit.

For further information please contact:

Jeff Williams
 Managing Director
 +61 418 594 324

OR

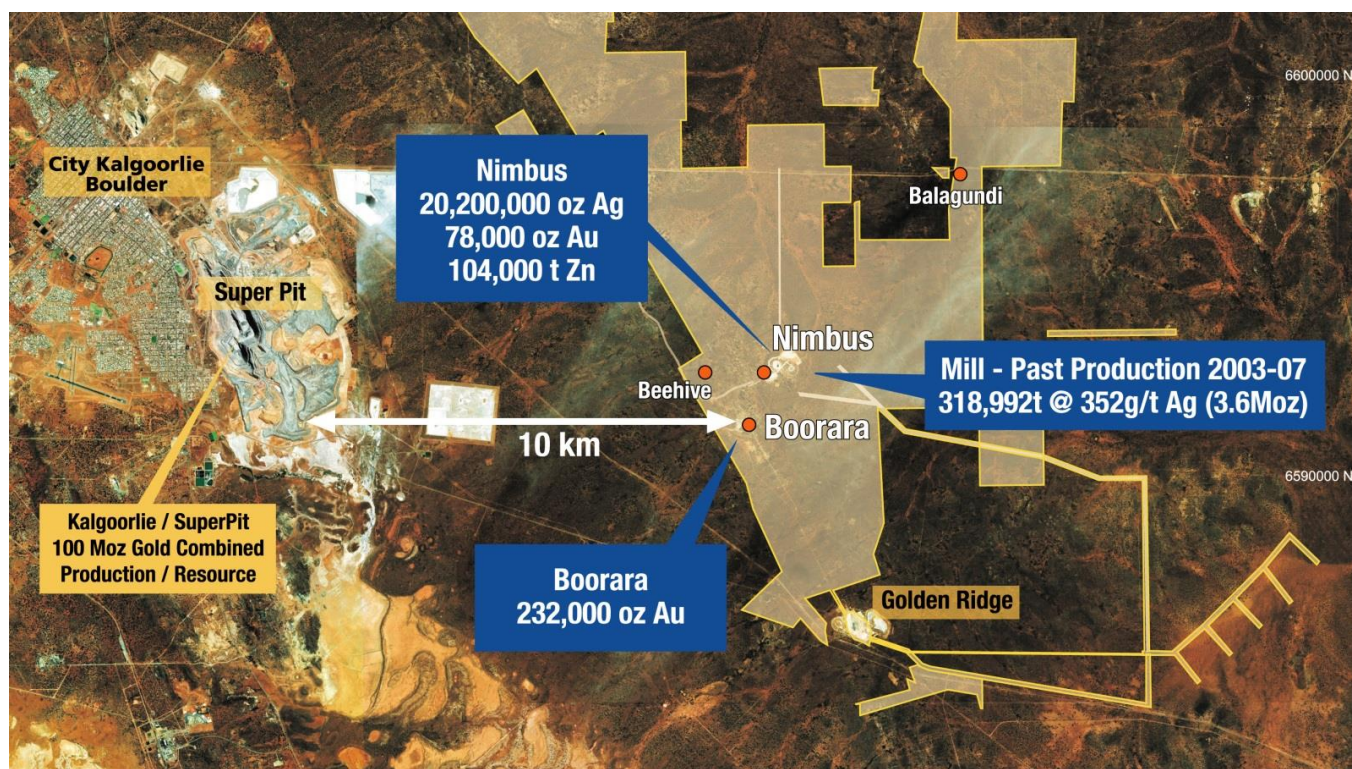
Andrew Pumphrey
 General Manager
 +61 419 965 976

About MacPhersons

MacPhersons Resources Ltd (MRP) is a Western Australian resource company with a number of advanced gold, silver and zinc projects.

The company's long term objective is the development of its existing assets and unlocking the full potential of its 100% owned highly prospective Boorara and Nimbus projects.

For more information on MacPhersons Resources Limited and to subscribe for regular updates, please visit our website at: www.mrpresources.com.au or contact our Kalgoorlie office via email on info@mrpresources.com.au or telephonically on 08 9068 1300



Competent Person's Statement

The information in this report that relates to exploration results is based on information compiled by Andrew Pumphrey who is a Member of the Australian Institute of Geoscientists and is a Member of the Australasian Institute of Mining and Metallurgy. Andrew Pumphrey is a full time employee of Macphersons Resources Ltd and has sufficient experience which is relevant to the style of mineralisation and type of deposit under consideration and to the activity which he is undertaking to qualify as a Competent Person as defined in the 2012 edition of the "Australasian Code for Reporting of Exploration Results, Mineral Resources and Ore Reserves". Mr Pumphrey has given his consent to the inclusion in this report of the matters based on the information in the form and context in which it appears.

JORC Code, 2012 Edition – Table 1 Report

Section 1 Sampling Techniques and Data

(Criteria in this section apply to all succeeding sections.)

CRITERIA	JORC CODE EXPLANATION	COMMENTARY
Sampling techniques	<i>Nature and quality of sampling (e.g. cut channels, random chips, or specific specialised industry standard measurement tools appropriate to the minerals under investigation, such as down hole gamma sondes, or handheld XRF instruments, etc). These examples should not be taken as limiting the broad meaning of sampling.</i>	<p>The Boorara Deposit diamond holes (4 HQ holes 1113.1m for BODH 029, 030, 031 & 032) azimuth 115°-128° and dipping -60° to -66°.</p> <p>Diamond drilling completed using one metre sampling lengths .</p>
	<i>Include reference to measures taken to ensure sample representivity and the appropriate calibration of any measurement tools or systems used.</i>	<p>All sampling is undertaken using MacPhersons Resources sampling procedures and QAQC in line with industry best practise which includes certified standards on average every 30 samples.</p> <p>HQ diamond core was half cut to produce a 2-4 kg sample for analysis.</p>
	<i>Aspects of the determination of mineralisation that are Material to the Public Report.</i>	<p>Historic hole collars have been recovered where possible and surveyed by a licenced surveyor using a DGPS (0.01). Historic holes were down hole surveyed where possible for deviation by north seeking gyroscope method by local contactor ABIMS.</p>
	<i>In cases where 'industry standard' work has been done this would be relatively simple (e.g. 'reverse circulation drilling was used to obtain 1 m samples from which 3 kg was pulverised to produce a 30 g charge for fire assay'). In other cases more explanation may be required, such as where there is coarse gold that has inherent sampling problems. Unusual commodities or mineralisation types (e.g. submarine nodules) may warrant disclosure of detailed information.</i>	<p>The diamond half core sample intervals were typically a 2-4 kg representative sample dispatched to the laboratory for gold analysis.</p> <p>All analysis was by 50g fire assay with AAS finish.</p>

CRITERIA	JORC CODE EXPLANATION	COMMENTARY
Drilling techniques	<i>Drill type (e.g. core, reverse circulation, open-hole hammer, rotary air blast, auger, Bangka, sonic, etc) and details (e.g. core diameter, triple or standard tube, depth of diamond tails, face-sampling bit or other type, whether core is oriented and if so, by what method, etc).</i>	The diamond drilling was undertaken using HQ3 (triple tube) and HQ3 (standard tube) techniques.
Drill sample recovery	<i>Method of recording and assessing core and chip sample recoveries and results assessed.</i>	Drill core was measured and compared to drilled intervals, and recorded as a percentage recovery. Recovery in oxidised rock can be reasonable whereas recovery in fresh rock is excellent.
	<i>Measures taken to maximise sample recovery and ensure representative nature of the samples.</i>	Using professional and competent core drilling contractor minimises issues with sample recoveries through the use of appropriate drilling equipment techniques and drilling fluids suited to the particular ground conditions.
	<i>Whether a relationship exists between sample recovery and grade and whether sample bias may have occurred due to preferential loss/gain of fine/coarse material.</i>	The core sample recovery in the transitional and fresh rock zones is very high and no significant bias is expected. Recoveries in oxidised rock were lower. Although no exhaustive studies have been undertaken, no significant bias is expected, and any potential bias is not considered material at this stage of resource development.
Logging	<i>Whether core and chip samples have been geologically and geotechnically logged to a level of detail to support appropriate Mineral Resource estimation, mining studies and metallurgical studies.</i>	Diamond core metres underwent detailed logging through the entire hole with record kept of colour, lithology, degree of oxidation, and type and intensity of alteration, veining and sulphide content. Structural and geotechnical data is also collected on drill core.
	<i>Whether logging is qualitative or quantitative in nature. Core (or costean, channel, etc) photography.</i>	All logging is qualitative in nature and included records of lithology, oxidation state and colour with estimates of intensity of mineralisation, alteration and veining. Wet and dry photographs were completed on the core.
	<i>The total length and percentage of the relevant intersections logged.</i>	All drill holes were geologically logged in full (100%).
Sub-	<i>If core, whether cut or sawn and whether</i>	Core was half cut with a diamond saw with the same

CRITERIA	JORC CODE EXPLANATION	COMMENTARY
sampling techniques and sample preparation	<i>quarter, half or all core taken.</i>	half always sampled and the other half retained in core trays. In some instances oxidised and non-competent clay zones are carefully split in half using sampling wedge and sampled as half core.
	<i>If non-core, whether riffled, tube sampled, rotary split, etc and whether sampled wet or dry.</i>	Only diamond core was sampled.
	<i>For all sample types, the nature, quality and appropriateness of the sample preparation technique.</i>	All samples were analysed via a 50 gram fire assay. Sample preparation and analysis were completed by ALS in Kalgoorlie. When received, samples are processed by code PREP-31 - logged in tracking system and bar code attached, wet samples dried through ovens, fine crushing to better than 70% passing 2mm, split sample using riffle splitter, split of up to 1000g pulverised to >85% sample passing 75um.
	<i>Quality control procedures adopted for all sub-sampling stages to maximise representivity of samples.</i>	All sampling equipment and sample bags are kept clean at all times. MacPhersons Resources sampling procedures and QAQC is used to maximise representivity of samples.
	<i>Measures taken to ensure that the sampling is representative of the in situ material collected, including for instance results for field duplicate/second-half sampling.</i>	For drill core, the entire core is sampled at one metre intervals to ensure that samples are representative of the entire in-situ rock being tested. The laboratory ensures that the entire sample submitted is crushed and split appropriately to provide a representative sub-sample. No duplicate samples are taken from the core
	<i>Whether sample sizes are appropriate to the grain size of the material being sampled.</i>	The sample sizes (0.5 kg to 3 kg) are considered appropriate for the style of mineralisation at Boorara. Half cut HQ diamond core samples over 1m length were up to 4kg.
Quality of assay data and laboratory tests	<i>The nature, quality and appropriateness of the assaying and laboratory procedures used and whether the technique is considered partial or total.</i>	The nature, quality and appropriateness of the assaying and laboratory procedures are industry standard for Archaean mesothermal lode gold deposits. The fire assay technique will result in a total assay result.
	<i>For geophysical tools, spectrometers, handheld XRF instruments, etc, the</i>	None of these tools are used

CRITERIA	JORC CODE EXPLANATION	COMMENTARY
	<p><i>parameters used in determining the analysis including instrument make and model, reading times, calibrations factors applied and their derivation, etc.</i></p>	
	<p><i>Nature of quality control procedures adopted (e.g. standards, blanks, duplicates, external laboratory checks) and whether acceptable levels of accuracy (i.e. lack of bias) and precision have been established.</i></p>	<p>Certified Reference Materials (standards) are purchased from an independent supplier of such materials. Blanks are made up from samples previously collected from other drill programs at Boorara –Nimbus that have analysed as less than detection Au values.</p> <p>A standard sample followed by a blank sample are inserted every 30th sample.</p> <p>Evaluation of the Macphersons submitted standards and blanks analysis results indicates that assaying is accurate and without significant drift.</p>
<p>Verification of sampling and assaying</p>	<p><i>The verification of significant intersections by either independent or alternative company personnel.</i></p>	<p>At least two different company personnel visually verified intersections in the diamond core. A representative sample of each metre is collected and stored for further verification if needed. Drill core or core photos are used to verify drill intersections in diamond core samples.</p>
	<p><i>The use of twinned holes.</i></p>	<p>The spatial location and assaying accuracy of historical drilling was confirmed with RC and DD twinned holes.</p>
	<p><i>Documentation of primary data, data entry procedures, data verification, data storage (physical and electronic) protocols.</i></p>	<p>Data collected in the form of spread sheets, for drill hole collars, surveys, lithology and assay.</p> <p>All geological and field data is entered into excel spreadsheets with lookup tables and fixed formatting (and protected from modification) thus only allowing data to be entered using the MacPhersons geological code system and sample protocol.</p> <p>Data is verified and validated by MRP geologists and stored in a Microsoft Access Database</p> <p>Data is emailed to a database administrator for validation and importation into a GEMS database and periodically into a SQL database using Datashed.</p>
	<p><i>Discuss any adjustment to assay data.</i></p>	<p>No adjustments are made to the primary assay data imported into the database.</p>
<p>Location of data points</p>	<p><i>Accuracy and quality of surveys used to locate drill holes (collar and down-hole surveys), trenches, mine workings and other locations used in Mineral Resource</i></p>	<p>Initial hole collars surveyed by licenced surveyor DGPS (0.01m). Diamond drill line by surveyed back sight and foresight pegs. Dip was checked with clinometer on drill mast at set up on hole. Diamond holes are surveyed by</p>

CRITERIA	JORC CODE EXPLANATION	COMMENTARY
	<i>estimation.</i>	<p>down hole surveys at 30m intervals using single shot "Reflex Camera +/- 0.1⁰ by drill contractor.</p> <p>Diamond holes are surveyed for deviation by gyroscope method by local contractor ABIMS Ltd.</p> <p>Final hole collar locations surveyed by licenced surveyor (Minecomp Pty Ltd) DGPS (0.01m).</p>
	<i>Specification of the grid system used.</i>	The grid system used is Geocentric Datum of Australia 1994 (GDA94).
	<i>Quality and adequacy of topographic control.</i>	<p>Historical – Aerial photography used to produce digital surface topographic maps at 1:2500 1m contours.</p> <p>2011 - Fugro Spatial Solutions Pty Ltd detailed aerial photographic survey. Orthorectification and mosaicking performed using Inpho Digital Photogrammetric Systems. Expected accuracy of detail within 0.8mm at the ortho-image map scale.</p> <p>Topographic control is from an aerial photographic survey completed during 2012 with accuracy within 0.01m.</p>
Data spacing and distribution	<i>Data spacing for reporting of Exploration Results.</i>	<p>The majority of drilling at Boorara is close spaced down to 10m line x 5m hole, with the remainder 20m line x 10m hole and some more wide spaced at 40m line x 10m hole.</p> <p>The holes reported in this release were 40m and 50m apart.</p>
	<i>Whether the data spacing and distribution is sufficient to establish the degree of geological and grade continuity appropriate for the Mineral Resource and Ore Reserve estimation procedure(s) and classifications applied.</i>	The data spacing and distribution is sufficient to demonstrate spatial and grade continuity of the mineralized domains to support the current MRE classifications as Measured, Indicated and Inferred according to JORC (2012 Edition) reporting criteria.
	<i>Whether sample compositing has been applied.</i>	No sample compositing has been applied in the field within the mineralised zones.
Orientation of data in relation to geological structure	<i>Whether the orientation of sampling achieves unbiased sampling of possible structures and the extent to which this is known, considering the deposit type.</i>	Diamond drill holes were orientated 115°/-60° and 128°/-60° Which is considered to be perpendicular to the dominant quartz vein arrays. Various other orientations have been tried historically to try and capture the best orientation to drill various different structures and vein orientations. Historically diamond core holes were orientated 060°/-60°. BODH 029 was orientated 128°/-60°. BODH 030, 031 & 032 were orientated 115°/-60° which is close to perpendicular to the dominant quartz vein geometry.

CRITERIA	JORC CODE EXPLANATION	COMMENTARY
	<p><i>If the relationship between the drilling orientation and the orientation of key mineralised structures is considered to have introduced a sampling bias, this should be assessed and reported if material.</i></p>	<p>It is not believed that drilling orientation has introduced a sampling bias as the dominant mineralised quartz vein arrays at SSW area at Boorara are orientated 020°/35°NW, 040°/55° NW, 060°/40°.</p>
<p>Sample security</p>	<p><i>The measures taken to ensure sample security.</i></p>	<p>Chain of custody is managed by MRP. Field samples are stored overnight in a shed onsite which is equipped with security cameras and caretaker in residence who is an employee of MacPhersons.</p> <p>Field samples are delivered to the assay laboratory in Kalgoorlie by MRP personnel. Whilst in storage, they are kept in a locked yard. Tracking sheets have been set up online to track the progress of batches of samples through the laboratory.</p> <p>Sample pulps and coarse rejects are stored at ALS for a period of time and then returned to MRP.</p>
<p>Audits or reviews</p>	<p><i>The results of any audits or reviews of sampling techniques and data</i></p>	<p>CSA completed a review in early 2015 of the MRP sampling protocols as part of their Resource estimation work and were satisfied that the adequacy of sample preparation, sample security and analytical procedures support the Mineral Resource classification discussed and are of industry standard.</p> <p>MRP have maintained those sampling protocols from that time.</p>

JORC Code, 2012 Edition – Section 2 Report

Section 2 Reporting of Exploration Results

(Criteria in this section apply to all succeeding sections.)

CRITERIA	JORC CODE EXPLANATION	COMMENTARY
Mineral tenement and land tenure status	<i>Type, reference name/number, location and ownership including agreements or material issues with third parties such as joint ventures, partnerships, overriding royalties, native title interests, historical sites, wilderness or national park and environmental settings.</i>	<p>The Boorara Project is located approximately 17km east-southeast of Kalgoorlie, 2km west of Nimbus and 6km north-northwest of Golden Ridge' The Boorara project is situated within mining leases M26/29, M26/277 and M26/318 accessed from the Kalgoorlie-Bulong Road via an unsealed haul road. The tenements are located within the Hampton Hill Pastoral Station.</p> <p>Normal Western Australian state royalties apply. A third party royalty of \$1/t is payable to a maximum of \$1 million on M26/277. A third party royalty based on production milestones is payable on M26/29, M26/318 & M26/161 as below;</p> <ul style="list-style-type: none"> • 25,000 ounces gold production – 375 ounce royalty payable • 50,000 ounces gold production – 375 ounce royalty payable • 75,000 ounces gold production – 375 ounce royalty payable • 100,000 ounces gold production – 375 ounce royalty payable <p>Situated within the Boorara Project area are the reserves associated with the Boorara townsite. Proposed open pit operations will not impact on the reserves.</p> <p>The location of waste dumps will be sited so as to avoid mineral resources, exploration targets and to work with other mining infrastructure associated with the Nimbus operations located within 2km of the proposed Boorara open pits.</p> <p>MRP purchased the Nimbus property on 8th September 2011 from Kalgoorlie Ore Treatment Company Pty Ltd (KOTC). The tenements are held by KOTC, a wholly owned subsidiary of MacPhersons Resources Ltd.</p>
	<i>The security of the tenure held at the time of reporting along with any known impediments to obtaining a licence to operate in the area.</i>	<p>The tenements are in good standing and no known impediments exist.</p>

CRITERIA	JORC CODE EXPLANATION	COMMENTARY
<p>Exploration done by other parties</p>	<p><i>Acknowledgment and appraisal of exploration by other parties.</i></p>	<p>Historic gold production at Boorara produced 30,673 oz's from the treatment of 54,731 tonnes of ore. This production was from underground mining at the Cataract shaft, East Lode shaft and the Crown Jewel shaft. Historic mine plans and sections show two orientations of mine stopes, one at 040°/25° NW and another at 315°/65°W.</p> <p>Dampier Mining Pty Ltd and Texas Gulf Australia Ltd in 1980 drilled 20 RC holes for 1038m and 10 diamond holes for 1695m.</p> <p>Western Reefs NL in 1985 undertook soil sampling on a 40m x 20m grid. They also completed 180 RAB holes for 9892m, 268 RC holes for 20,831m and 26 diamond holes for 2609m. Geological mapping was undertaken by Western Reefs including costean mapping and sampling. The Cataract shaft was refurbished and geologically mapped and surveyed. The Crown Jewel shaft was mapped and surveyed also.</p> <p>Windsor Resources in 1988 drilled 174 RC holes for 11274m.</p> <p>Newmont in 1990 drilled 338 RAB holes for 15446m, 39 RC holes for 4319m and 4 diamond holes for 718m. Geological mapping and soil sampling was also undertaken.</p> <p>Mt Monger Gold Project in 1993 drilled 116 RC holes for 6222m.</p> <p>Fimiston Mining NL in 1995 drilled 110 RC holes for 7257m and 1 diamond hole for 195m. The data relating to the Boorara gold deposits comprising the Southern Stockwork Zone, Northern Stockwork Zone, Cataract Area, East Lode and Digger Dam was reviewed. The database was updated to incorporate the drilling completed by Fimiston and cross sections and interpretations made. A global polygonal based resource estimate was made which estimated resources of 2.25 million tonnes @ 1.40g/t Au at a cut-off grade of 0.5g/t or 1.42 million tonnes @ 1.72 g/t Au at a cut off of 1.0 g/t to be estimated. Block modelling of this polygonal data was then completed which returned a total oxide resource of 1,293,000 tonnes @ 1.49 g/t, and a total fresh resource of 1,095,000 tonnes @ 1.86g/t.</p> <p>New Hampton Goldfields Ltd in 2001 undertook a resource estimate at Boorara which resulted in a JORC compliant undiluted mineral resource of</p>

CRITERIA	JORC CODE EXPLANATION	COMMENTARY
		<p>1,506,000t @ 1.85 g/t Au. Open pit design of the Southern Stockwork, Cataract and the Northern Stockwork resulted in a Probable Reserve of 179,000t @ 3.0 g/t Au. The New Hampton Goldfields Ltd – Jubilee Gold Operations report, “Mineral Resource Estimate Report, Boorara M26/29 M26/318 and M26/161, June 2001 G Job” outlines the methodology and an explanation of the resource calculation.</p> <p>Polymetals (WA) Pty Ltd in 2006 estimated a NON JORC complaint total resource summary of 1,904,800t @1.38g/t Au using a cutoff grade of 0.5 g/t Au.</p> <p>Polymetals (WA) Pty Ltd in 2009 completed 18 RC holes for 1770m. From this program 126 samples with >1.0g/t Au were screen fire assayed, with another 34 duplicates taking the total samples assayed via screen fire assay to 160.</p>
Geology	<i>Deposit type, geological setting and style of mineralisation.</i>	<p>The Boorara Au deposit is an Archaean mesothermal Au deposit.</p> <p>The Boorara local geology consists of a sequence of ultramafic, mafic and felsic volcanic and volcanoclastic rocks, with interflow carbonaceous sediments found on the lithological boundaries. Dolerite intrusions are conformable within the sequence. The metamorphic grade of rocks at Boorara is lower greenschist facies. The alteration assemblage associated with better Au grades consists of quartz carbonate and sericite. Pyrite and arsenopyrite are associated with the better Au grades at Boorara.</p> <p>At Boorara gold mineralisation has been described by Verbeek (1987) to occur :</p> <ul style="list-style-type: none"> • Near dolerite contacts associated with quartz stockwork or vein arrays. Pervasive carbonate-sericite alteration is present. • Sulphides occur in the vein selvage with proximal arsenopyrite and distal pyrite. • Veins are usually less than 20 mm wide whilst the selvage may be 1 to 4 times the width of the vein. • Associated with quartz veins in shallow (20 to 45 degrees) north-dipping shear zones. • Associated with steep (50 to 70 degrees) east-dipping shear zones on dolerite contacts.

CRITERIA	JORC CODE EXPLANATION	COMMENTARY
		<p>Mineralisation envelopes at Boorara consist of three dominant orientations:</p> <ol style="list-style-type: none"> 1. NW trend of sub-vertical mineralisation which is typified by the East Lode workings, and interpreted as sub parallel to lithology contacts 2. NW moderate NE dipping structure at Crown Jewel, sub parallel to lithology contacts 3. NE striking, shallow to moderate NW dipping vein arrays as seen in the Boorara trial pit and at the Cataract workings.
<p>Drill hole Information</p>	<p><i>A summary of all information material to the understanding of the exploration results including a tabulation of the following information for all Material drill holes:</i></p> <ol style="list-style-type: none"> 1. easting and northing of the drill hole collar 2. elevation or RL (Reduced Level – elevation above sea level in metres) of the drill hole collar 3. dip and azimuth of the hole 4. down hole length and interception depth 5. hole length. <p><i>If the exclusion of this information is justified on the basis that the information is not Material and this exclusion does not detract from the understanding of the report, the Competent Person should clearly explain why this is the case.</i></p>	<p>Please refer to Appendix 1 Section 2 JORC table 1 for full details.</p> <p>Other relevant drill hole information can be found in Section 1-“Sampling techniques, “Drilling techniques” and “Drill sample recovery”.</p>
<p>Data aggregation methods</p>	<p><i>In reporting Exploration Results, weighting averaging techniques, maximum and/or minimum grade truncations (e.g. cutting of high grades) and cut-off grades are usually Material and should be stated.</i></p> <p><i>Where aggregate intercepts incorporate short lengths of high grade results and longer lengths of low grade results, the procedure used for such aggregation should be stated and some typical examples of such aggregations should be shown in detail.</i></p> <p><i>The assumptions used for any reporting of metal equivalent values should be clearly</i></p>	<p>All one metre diamond drill results are reported in Appendix 1 Section 2 of JORC table 1. Holes include up to 2m of internal dilution - host dolerite was intersected in the 2m diluted section with significant alteration. A bottom cutoff grade of 0.3 g/t was used and no top cut grade was applied.</p> <p>The procedure applied to the aggregate intercepts quoted is length weighted average (sum product of interval x corresponding interval assay grade), divided by sum of interval lengths and rounded by one decimal place.</p> <p>No metal equivalent values have been reported.</p>

CRITERIA	JORC CODE EXPLANATION	COMMENTARY
	<i>stated.</i>	
Relationship between mineralisation widths and intercept lengths	<i>These relationships are particularly important in the reporting of Exploration Results.</i>	<p>These drill holes are designed to drill perpendicular to the dominant quartz vein array geometry within the Boorara dolerite at Boorara which gives MRP geologists a good understanding of mineralisation widths encountered.</p> <p>The dominant mineralisation geometries seen at the Boorara gold project are;</p> <ol style="list-style-type: none"> 1. Shear zone hosted mineralisation on the dolerite east contact which strikes 320° and is steeply dipping to the west. 2. Quartz vein sheeted vein array hosted mineralisation that is orientated 040°/30°NW, 020°/35°NW
	<i>If the geometry of the mineralisation with respect to the drill hole angle is known, its nature should be reported.</i>	
	<i>If it is not known and only the down hole lengths are reported, there should be a clear statement to this effect (e.g. 'down hole length, true width not known').</i>	<p>The estimated true width of the granophyric dolerite has been estimated at 20m this based on BORC 157 intersection 23m @ 2.02 g/t.</p> <p>The true width of the ore at the Boorara gold resource is reasonably well known from the earlier deeper resource drilling, but at Boorara does not appear to be consistent in width due to the structural setting of the mineralisation. Greater than 90% of all drill holes would define both boundaries to mineralisation from which a true width can be reasonably determined.</p>
Diagrams	<p><i>Appropriate maps and sections (with scales) and tabulations of intercepts should be included for any significant discovery being reported These should include, but not be limited to a plan view of drill hole collar locations and appropriate sectional views.</i></p> <p><i>(NOTE: Any map, section, diagram, or other graphic or photo must be of high enough resolution to clearly be viewed, copied and read without distortion or loss of focus).</i></p>	Please refer to the body of the announcement. .
Balanced reporting	<i>Where comprehensive reporting of all Exploration Results is not practicable, representative reporting of both low and high grades and/or widths should be practiced to avoid misleading reporting of Exploration Results.</i>	All 1m assayed intervals have been reported in Appendix 1 Section 2 of the JORC table.
Other substantive	<i>Other exploration data, if meaningful and material, should be reported including (but not limited to): geological observations;</i>	The diamond holes were also utilised for bulk density measurements.

CRITERIA	JORC CODE EXPLANATION	COMMENTARY
exploration data	<i>geophysical survey results; geochemical survey results; bulk samples – size and method of treatment; metallurgical test results; bulk density, groundwater, geotechnical and rock characteristics; potential deleterious or contaminating substances.</i>	
Further work	<i>The nature and scale of planned further work (e.g. tests for lateral extensions or depth extensions or large-scale step-out drilling).</i>	Further RC & Diamond drilling is planned to further test mineralisation associated with this release.
	<i>Diagrams clearly highlighting the areas of possible extensions, including the main geological interpretations and future drilling areas, provided this information is not commercially sensitive.</i> <i>(NOTE: Any map, section, diagram, or other graphic or photo must be of high enough resolution to clearly be viewed, copied and read without distortion or loss of focus).</i>	Please refer to the body of the report.

JORC Code, 2012 Edition – Table 1

Section 2 Report

Appendix 1 One metre Diamond Drilling significant intercepts >0.3 g/t (includes up to 2m of internal dilution)

HOLE-ID	Easting (GDA 94)	Northing (GDA 94)	mRL	Azimuth (°)	Dip (°)	Depth From (m)	Depth To (m)	Interval	Au (g/t)
BODH 029	370336.866	6590730.930	397.888	129.36	-60.27	0.00	1.00	1.00	0.7
						1.00	2.00	1.00	0.38
						9.00	10.00	1.00	1.95
						10.00	11.00	1.00	0.16
						11.00	12.00	1.00	0.55
						12.00	13.00	1.00	0.12
						13.00	14.00	1.00	0.68
						27.00	28.00	1.00	0.92
						28.00	29.00	1.00	0.57
						29.00	30.00	1.00	1.57
						35.00	36.00	1.00	3.36
						36.00	37.00	1.00	0.28
						37.00	38.00	1.00	0.36
						38.00	39.00	1.00	5.74
						39.00	40.00	1.00	1.27
						40.00	41.00	1.00	0.17
						41.00	42.00	1.00	0.36
						42.00	43.00	1.00	1.3
						43.00	44.00	1.00	0.77
						44.00	45.00	1.00	0.4
						45.00	46.00	1.00	0.58
						46.00	47.00	1.00	3.42
						47.00	48.00	1.00	3.07
						48.00	49.00	1.00	1.23
						49.00	50.00	1.00	0.51
						50.00	51.00	1.00	0.84
						51.00	52.00	1.00	0.24
						52.00	53.00	1.00	0.29
						53.00	54.00	1.00	0.42
						54.00	55.00	1.00	0.31
						55.00	56.00	1.00	1.6
						56.00	57.00	1.00	0.92
						57.00	58.00	1.00	0.77
						58.00	59.00	1.00	1.7

HOLE-ID	Easting (GDA 94)	Northing (GDA 94)	mRL	Azimuth (°)	Dip (°)	Depth From (m)	Depth To (m)	Interval	Au (g/t)
BODH029						59.00	60.00	1.00	1.86
						60.00	61.00	1.00	0.3
						61.00	62.00	1.00	0.14
						62.00	63.00	1.00	0.35
						63.00	64.00	1.00	0.16
						64.00	65.00	1.00	0.59
						65.00	66.00	1.00	1.23
						66.00	67.00	1.00	0.24
						67.00	68.00	1.00	0.4
						68.00	69.00	1.00	0.8
						69.00	70.00	1.00	0.89
						70.00	71.00	1.00	0.54
						71.00	72.00	1.00	0.34
						72.00	73.00	1.00	0.94
						73.00	74.00	1.00	4.28
						74.00	75.00	1.00	0.7
						75.00	76.00	1.00	0.79
						76.00	77.00	1.00	0.47
						77.00	78.00	1.00	1.67
						78.00	79.00	1.00	0.55
						79.00	80.00	1.00	0.66
						80.00	81.00	1.00	1.15
						81.00	82.00	1.00	2.36
						82.00	83.00	1.00	2.41
						83.00	84.00	1.00	0.22
						84.00	85.00	1.00	1.06
						85.00	86.00	1.00	0.55
						86.00	87.00	1.00	0.51
						87.00	88.00	1.00	3.46
						88.00	89.00	1.00	1.83
						89.00	90.00	1.00	0.17
						90.00	91.00	1.00	0.46
						91.00	92.00	1.00	0.27
						92.00	93.00	1.00	3.47
						93.00	94.00	1.00	0.85
						94.00	95.00	1.00	1.41
						95.00	96.00	1.00	1.27
						96.00	97.00	1.00	0.19

HOLE-ID	Easting (GDA 94)	Northing (GDA 94)	mRL	Azimuth (°)	Dip (°)	Depth From (m)	Depth To (m)	Interval	Au (g/t)
BODH029						97.00	98.00	1.00	0.04
						98.00	99.00	1.00	0.31
						99.00	100.00	1.00	0.88
						100.00	101.00	1.00	0.41
						101.00	102.00	1.00	0.71
						102.00	103.00	1.00	0.28
						103.00	104.00	1.00	0.23
						107.00	108.00	1.00	0.33
						108.00	109.00	1.00	1.36
						109.00	110.00	1.00	1.55
						110.00	111.00	1.00	1
						111.00	112.00	1.00	0.84
						112.00	113.00	1.00	0.96
						113.00	114.00	1.00	0.54
						114.00	115.00	1.00	0.43
						115.00	116.00	1.00	0.17
						116.00	117.00	1.00	0.32
						117.00	118.00	1.00	0.69
						118.00	119.00	1.00	0.93
						119.00	120.00	1.00	0.67
						120.00	121.00	1.00	0.41
						121.00	122.00	1.00	0.59
						122.00	123.00	1.00	0.79
						123.00	124.00	1.00	0.59
						124.00	125.00	1.00	1.1
						125.00	126.00	1.00	0.32
						126.00	127.00	1.00	0.3
						127.00	128.00	1.00	0.36
						128.00	129.00	1.00	0.25
						129.00	130.00	1.00	0.3
						130.00	131.00	1.00	1.2
						131.00	132.00	1.00	1.14
						132.00	133.00	1.00	0.84
						133.00	134.00	1.00	0.56
						134.00	135.00	1.00	2.25
						135.00	136.00	1.00	0.38
						136.00	137.00	1.00	1.38
						137.00	138.00	1.00	1.53

HOLE-ID	Easting (GDA 94)	Northing (GDA 94)	mRL	Azimuth (°)	Dip (°)	Depth From (m)	Depth To (m)	Interval	Au (g/t)
BODH029						138.00	139.00	1.00	0.28
						139.00	140.00	1.00	0.44
						140.00	141.00	1.00	3.19
						141.00	142.00	1.00	3.33
						142.00	143.00	1.00	0.27
						143.00	144.00	1.00	1.07
						144.00	145.00	1.00	0.72
						145.00	146.00	1.00	0.59
						146.00	147.00	1.00	0.47
						147.00	148.00	1.00	0.45
						148.00	149.00	1.00	<0.01
						149.00	150.00	1.00	0.15
						150.00	151.00	1.00	0.51
						154.00	155.00	1.00	0.4
						155.00	156.00	1.00	0.36
						171.00	172.00	1.00	0.64
						172.00	173.00	1.00	0.6
						175.00	176.00	1.00	0.44
						177.00	178.00	1.00	1.05
						191.00	192.00	1.00	0.92
						194.00	195.00	1.00	1.52
						196.00	197.00	1.00	0.3
						197.00	198.00	1.00	0.99
						198.00	199.00	1.00	0.95
						199.00	200.00	1.00	0.42
						200.00	201.00	1.00	0.94
						215.00	216.00	1.00	7.63
						216.00	217.00	1.00	0.1
						217.00	218.00	1.00	1.09
						218.00	219.00	1.00	0.27
						219.00	220.00	1.00	0.17
						220.00	221.00	1.00	0.64
						221.00	222.00	1.00	0.79
						222.00	223.00	1.00	0.65
						223.00	224.00	1.00	0.51
						224.00	225.00	1.00	0.97
						225.00	226.00	1.00	0.27
						226.00	227.00	1.00	2.77

HOLE-ID	Easting (GDA 94)	Northing (GDA 94)	mRL	Azimuth (°)	Dip (°)	Depth From (m)	Depth To (m)	Interval	Au (g/t)
BODH029						227.00	228.00	1.00	0.34
						228.00	229.00	1.00	0.06
						229.00	230.00	1.00	1.79
						230.00	231.00	1.00	0.84
						231.00	232.00	1.00	0.78
						232.00	233.00	1.00	<0.01
						233.00	234.00	1.00	1.27
						234.00	235.00	1.00	0.65
						235.00	236.00	1.00	1.38
						236.00	237.00	1.00	0.75
						237.00	238.00	1.00	1.61
						238.00	239.00	1.00	1.87
						239.00	240.00	1.00	0.29
						240.00	241.00	1.00	0.49
						241.00	242.00	1.00	0.64
						242.00	243.00	1.00	1.34
						243.00	244.00	1.00	0.3
						244.00	245.00	1.00	0.95
						245.00	246.00	1.00	0.96
						246.00	247.00	1.00	0.94
						247.00	248.00	1.00	1.56
						248.00	249.00	1.00	<0.01
						249.00	250.00	1.00	0.77
						250.00	251.00	1.00	1.33
						251.00	252.00	1.00	1.85
						252.00	253.00	1.00	0.75
						253.00	254.00	1.00	0.81
						254.00	255.00	1.00	2.47
						255.00	256.00	1.00	<0.01
						256.00	257.00	1.00	0.83
						257.00	258.00	1.00	0.62
						258.00	259.00	1.00	0.86
						259.00	260.00	1.00	0.51
						260.00	261.00	1.00	0.27
						261.00	262.00	1.00	0.26
						262.00	263.00	1.00	1.72
						263.00	264.00	1.00	0.59
						264.00	265.00	1.00	0.45

HOLE-ID	Easting (GDA 94)	Northing (GDA 94)	mRL	Azimuth (°)	Dip (°)	Depth From (m)	Depth To (m)	Interval	Au (g/t)
BODH029						265.00	266.00	1.00	0.15
						266.00	267.00	1.00	0.32
						267.00	268.00	1.00	0.23
						268.00	269.00	1.00	0.38
						269.00	270.00	1.00	0.66
						270.00	271.00	1.00	0.51
						271.00	272.00	1.00	0.72
						272.00	273.00	1.00	1.52
						273.00	274.00	1.00	1.98
						274.00	275.00	1.00	0.41
						275.00	276.00	1.00	0.69
						276.00	277.00	1.00	0.92
						277.00	278.00	1.00	0.77
						278.00	279.00	1.00	0.97
						279.00	280.00	1.00	0.83
						280.00	281.00	1.00	0.84
						281.00	282.00	1.00	3.44
						282.00	283.00	1.00	0.52
						283.00	284.00	1.00	0.6
						284.00	285.00	1.00	0.25
					285.00	286.00	1.00	0.22	
					286.00	287.00	1.00	0.39	
BODH030	370413.801	6590588.404	392.627	116.5	-59.79	31.00	32.00	1.00	0.8
						32.00	33.00	1.00	0.04
						33.00	34.00	1.00	0.13
						34.00	35.00	1.00	2.64
						35.00	36.00	1.00	0.66
						36.00	37.00	1.00	1.48
						37.00	38.00	1.00	1.98
						38.00	39.00	1.00	0.25
						39.00	40.00	1.00	2.3
						40.00	41.00	1.00	4.65
						41.00	42.00	1.00	0.25
						42.00	43.00	1.00	0.7
						43.00	44.00	1.00	2.11
					44.00	45.00	1.00	0.46	
					45.00	46.00	1.00	0.87	
					46.00	47.00	1.00	5.18	

HOLE-ID	Easting (GDA 94)	Northing (GDA 94)	mRL	Azimuth (°)	Dip (°)	Depth From (m)	Depth To (m)	Interval	Au (g/t)
BODH030						47.00	48.00	1.00	0.85
						48.00	49.00	1.00	7.76
						49.00	50.00	1.00	1.51
						50.00	51.00	1.00	1.64
						51.00	52.00	1.00	0.4
						52.00	53.00	1.00	1.22
						53.00	54.00	1.00	0.5
						54.00	55.00	1.00	0.45
						55.00	56.00	1.00	0.51
						56.00	57.00	1.00	1.39
						57.00	58.00	1.00	1.03
						58.00	59.00	1.00	2.8
						62.00	63.00	1.00	0.44
						63.00	64.00	1.00	0.1
						64.00	65.00	1.00	1.54
						65.00	66.00	1.00	1.76
						66.00	67.00	1.00	2.46
						67.00	68.00	1.00	2.79
						68.00	69.00	1.00	0.47
						69.00	70.00	1.00	0.46
						70.00	71.00	1.00	1.64
						71.00	72.00	1.00	0.46
						79.00	80.00	1.00	1.34
						80.00	81.00	1.00	1.54
						81.00	82.00	1.00	0.39
						82.00	83.00	1.00	0.66
						83.00	84.00	1.00	0.34
						84.00	85.00	1.00	0.1
						85.00	86.00	1.00	0.23
						86.00	87.00	1.00	1.09
						87.00	88.00	1.00	0.18
						88.00	89.00	1.00	0.34
						89.00	90.00	1.00	1.11
						90.00	91.00	1.00	0.69
						91.00	92.00	1.00	2.7
						92.00	93.00	1.00	0.64
						93.00	94.00	1.00	0.85
						94.00	95.00	1.00	2.37

HOLE-ID	Easting (GDA 94)	Northing (GDA 94)	mRL	Azimuth (°)	Dip (°)	Depth From (m)	Depth To (m)	Interval	Au (g/t)
BODH030						95.00	96.00	1.00	0.41
						96.00	97.00	1.00	0.24
						97.00	98.00	1.00	1.46
						98.00	99.00	1.00	0.21
						99.00	100.00	1.00	1.72
						100.00	101.00	1.00	0.19
						101.00	102.00	1.00	0.12
						102.00	103.00	1.00	1.43
						103.00	104.00	1.00	0.32
						104.00	105.00	1.00	0.07
						105.00	106.00	1.00	0.56
						106.00	107.00	1.00	0.08
						107.00	108.00	1.00	0.25
						108.00	109.00	1.00	0.65
						109.00	110.00	1.00	2.01
						110.00	111.00	1.00	0.06
						111.00	112.00	1.00	0.79
						112.00	113.00	1.00	0.74
						113.00	114.00	1.00	0.25
						114.00	115.00	1.00	0.44
						115.00	116.00	1.00	1.58
						116.00	117.00	1.00	0.24
						117.00	118.00	1.00	2.12
						121.00	122.00	1.00	1.34
						122.00	123.00	1.00	3.43
						123.00	124.00	1.00	0.1
						124.00	125.00	1.00	2.73
						125.00	126.00	1.00	0.29
						126.00	127.00	1.00	0.26
						127.00	128.00	1.00	0.38
						128.00	129.00	1.00	0.46
						135.00	136.00	1.00	0.84
						136.00	137.00	1.00	0.32
						139.00	140.00	1.00	1.25
						140.00	141.00	1.00	0.39
						141.00	142.00	1.00	0.31
						146.00	147.00	1.00	1.42
						147.00	148.00	1.00	3.69

HOLE-ID	Easting (GDA 94)	Northing (GDA 94)	mRL	Azimuth (°)	Dip (°)	Depth From (m)	Depth To (m)	Interval	Au (g/t)
BODH030						148.00	149.00	1.00	0.72
						149.00	150.00	1.00	0.09
						150.00	151.00	1.00	1.17
						151.00	152.00	1.00	2.33
						152.00	153.00	1.00	1.73
						153.00	154.00	1.00	2.84
						154.00	155.00	1.00	0.13
						155.00	156.00	1.00	0.07
						156.00	157.00	1.00	0.31
						157.00	158.00	1.00	0.9
						158.00	159.00	1.00	1.67
						159.00	160.00	1.00	0.77
						160.00	161.00	1.00	1.63
						161.00	162.00	1.00	0.25
						162.00	163.00	1.00	1.5
						163.00	164.00	1.00	1.44
						164.00	165.00	1.00	0.67
						170.00	171.00	1.00	0.44
						182.00	183.00	1.00	0.38
						184.00	185.00	1.00	1.35
					187.00	188.00	1.00	0.3	
					188.00	189.00	1.00	0.19	
					189.00	190.00	1.00	0.66	
					190.00	191.00	1.00	0.23	
					191.00	192.00	1.00	2.57	
					192.00	193.00	1.00	0.22	
					193.00	194.00	1.00	0.71	
					194.00	195.00	1.00	0.37	
					195.00	196.00	1.00	0.56	
BODH031	370276.903	6590842.783	400.78	115.17	-59.45	2.00	3.00	1.00	0.7
						3.00	4.00	1.00	0.73
						4.00	5.00	1.00	0.28
						5.00	6.00	1.00	0.89
						6.00	7.00	1.00	0.26
						7.00	8.00	1.00	0.43
						8.00	9.00	1.00	1.24
						9.00	10.00	1.00	3.07
					10.00	11.00	1.00	0.97	

HOLE-ID	Easting (GDA 94)	Northing (GDA 94)	mRL	Azimuth (°)	Dip (°)	Depth From (m)	Depth To (m)	Interval	Au (g/t)
BODH031						14.00	15.00	1.00	0.45
						15.00	16.00	1.00	1.94
						16.00	17.00	1.00	0.91
						17.00	18.00	1.00	5.56
						18.00	19.00	1.00	0.95
						29.00	30.00	1.00	0.96
						30.00	31.00	1.00	0.85
						40.00	41.00	1.00	0.37
						42.00	43.00	1.00	0.52
						45.00	46.00	1.00	1.31
						46.00	47.00	1.00	0.84
						47.00	48.00	1.00	0.6
						48.00	49.00	1.00	0.24
						49.00	50.00	1.00	0.4
						50.00	51.00	1.00	0.1
						51.00	52.00	1.00	1.01
						52.00	53.00	1.00	0.89
						57.00	58.00	1.00	0.88
						58.00	59.00	1.00	0.36
						59.00	60.00	1.00	1.05
						60.00	61.00	1.00	0.21
						61.00	62.00	1.00	0.07
						62.00	63.00	1.00	0.16
						63.00	64.00	1.00	0.68
						64.00	65.00	1.00	0.16
						65.00	66.00	1.00	0.04
						66.00	67.00	1.00	0.58
						67.00	68.00	1.00	0.27
						68.00	69.00	1.00	0.39
						69.00	70.00	1.00	4.49
						70.00	71.00	1.00	0.25
						71.00	72.00	1.00	0.41
						75.00	76.00	1.00	0.47
						76.00	77.00	1.00	10.25
						77.00	78.00	1.00	0.07
						78.00	79.00	1.00	0.3
						79.00	80.00	1.00	0.42
						80.00	81.00	1.00	0.43
BODH031						81.00	82.00	1.00	4.01

HOLE-ID	Easting (GDA 94)	Northing (GDA 94)	mRL	Azimuth (°)	Dip (°)	Depth From (m)	Depth To (m)	Interval	Au (g/t)
BODH031						82.00	83.00	1.00	2.35
						83.00	84.00	1.00	0.89
						84.00	85.00	1.00	1.4
						85.00	86.00	1.00	0.47
						86.00	87.00	1.00	0.87
						87.00	88.00	1.00	0.23
						88.00	89.00	1.00	1.26
						89.00	90.00	1.00	2.93
						90.00	91.00	1.00	0.43
						91.00	92.00	1.00	0.04
						92.00	93.00	1.00	0.93
						106.00	107.00	1.00	0.73
						107.00	108.00	1.00	0.57
						108.00	109.00	1.00	6.74
						117.00	118.00	1.00	0.53
						118.00	119.00	1.00	1.02
						119.00	120.00	1.00	0.42
						120.00	121.00	1.00	0.26
						121.00	122.00	1.00	0.48
						124.00	125.00	1.00	7.28
						125.00	126.00	1.00	0.56
						135.00	136.00	1.00	0.53
						140.00	141.00	1.00	0.62
						143.00	144.00	1.00	0.34
						158.00	159.00	1.00	0.52
						164.00	165.00	1.00	0.37
						169.00	170.00	1.00	0.5
						170.00	171.00	1.00	2.78
						171.00	172.00	1.00	10.95
						172.00	173.00	1.00	0.67
						173.00	174.00	1.00	0.82
						174.00	175.00	1.00	0.42
						175.00	176.00	1.00	0.6
						176.00	177.00	1.00	0.2
						177.00	178.00	1.00	0.29
						178.00	179.00	1.00	1.57
						179.00	180.00	1.00	3.8
BODH031						180.00	181.00	1.00	0.1
						181.00	182.00	1.00	0.17
						182.00	183.00	1.00	0.3

HOLE-ID	Easting (GDA 94)	Northing (GDA 94)	mRL	Azimuth (°)	Dip (°)	Depth From (m)	Depth To (m)	Interval	Au (g/t)
						183.00	184.00	1.00	0.49
BODH031						184.00	185.00	1.00	0.65
						185.00	186.00	1.00	0.64
						186.00	187.00	1.00	1.48
						187.00	188.00	1.00	1.54
						188.00	189.00	1.00	0.67
						189.00	190.00	1.00	0.61
						190.00	191.00	1.00	0.56
						191.00	192.00	1.00	0.78
						192.00	193.00	1.00	1.38
						193.00	194.00	1.00	0.66
						194.00	195.00	1.00	1.63
						195.00	196.00	1.00	0.11
						196.00	197.00	1.00	0.44
						197.00	198.00	1.00	0.62
						201.00	202.00	1.00	12.05
						202.00	203.00	1.00	0.4
						203.00	204.00	1.00	0.1
						204.00	205.00	1.00	0.32
						205.00	206.00	1.00	0.09
						206.00	207.00	1.00	0.55
						207.00	208.00	1.00	3.42
						208.00	209.00	1.00	0.79
						209.00	210.00	1.00	1.06
						210.00	211.00	1.00	1.3
						211.00	212.00	1.00	0.78
						212.00	213.00	1.00	1.29
						213.00	214.00	1.00	0.83
						214.00	215.00	1.00	1.48
						215.00	216.00	1.00	0.76
						216.00	217.00	1.00	1.81
						217.00	218.00	1.00	1.58
						218.00	219.00	1.00	1.82
						219.00	220.00	1.00	0.34
						220.00	221.00	1.00	0.88
BODH031						221.00	222.00	1.00	0.27
						222.00	223.00	1.00	0.08
						223.00	224.00	1.00	0.12
						224.00	225.00	1.00	1.42
						225.00	226.00	1.00	0.25

HOLE-ID	Easting (GDA 94)	Northing (GDA 94)	mRL	Azimuth (°)	Dip (°)	Depth From (m)	Depth To (m)	Interval	Au (g/t)
						226.00	227.00	1.00	0.05
						227.00	228.00	1.00	0.61
						228.00	229.00	1.00	0.66
						229.00	230.00	1.00	0.72
						230.00	231.00	1.00	1.13
						231.00	232.00	1.00	0.87
						232.00	233.00	1.00	0.31
						233.00	234.00	1.00	0.7
						234.00	235.00	1.00	0.12
						235.00	236.00	1.00	0.17
						236.00	237.00	1.00	0.48
						237.00	238.00	1.00	2
						246.00	247.00	1.00	0.48
						247.00	248.00	1.00	0.21
						248.00	249.00	1.00	0.12
						249.00	250.00	1.00	0.51
						250.00	251.00	1.00	0.17
						251.00	252.00	1.00	0.25
						252.00	253.00	1.00	0.57
						253.00	254.00	1.00	0.74
						254.00	255.00	1.00	0.85
						255.00	256.00	1.00	0.38
						256.00	257.00	1.00	0.19
						257.00	258.00	1.00	0.58
						258.00	259.00	1.00	0.27
						259.00	260.00	1.00	0.64
						260.00	261.00	1.00	0.15
						261.00	262.00	1.00	0.91
						262.00	263.00	1.00	0.45
						263.00	264.00	1.00	0.13
						264.00	265.00	1.00	0.09
						265.00	266.00	1.00	9.84
						266.00	267.00	1.00	0.28
BODH031						267.00	268.00	1.00	0.52
						268.00	269.00	1.00	0.54
						269.00	270.00	1.00	1.09
						270.00	271.00	1.00	0.75
						271.00	272.00	1.00	0.9
						272.00	273.00	1.00	1.31

HOLE-ID	Easting (GDA 94)	Northing (GDA 94)	mRL	Azimuth (°)	Dip (°)	Depth From (m)	Depth To (m)	Interval	Au (g/t)
						273.00	274.00	1.00	1.53
						274.00	275.00	1.00	1.14
						275.00	276.00	1.00	1.48
						276.00	277.00	1.00	1.54
						277.00	278.00	1.00	1.83
						278.00	279.00	1.00	1.63
						279.00	280.00	1.00	0.34
						280.00	281.00	1.00	1.33
						281.00	282.00	1.00	1.25
						282.00	283.00	1.00	1.48
						283.00	284.00	1.00	2.18
						284.00	285.00	1.00	1.67
						285.00	286.00	1.00	10.05
						286.00	287.00	1.00	0.86
						287.00	288.00	1.00	4.01
BODH032	370434.159	6590553.733	393.078	116.30	-60.70	20.00	21.00	1.00	0.31
						27.00	28.00	1.00	1.6
						35.00	36.00	1.00	0.59
						36.00	37.00	1.00	0.32
						37.00	38.00	1.00	0.53
						38.00	39.00	1.00	1.48
						39.00	40.00	1.00	1.29
						40.00	41.00	1.00	6.49
						41.00	42.00	1.00	0.3
						42.00	43.00	1.00	0.43
						43.00	44.00	1.00	2.71
						44.00	45.00	1.00	0.51
						45.00	46.00	1.00	1.27
						46.00	47.00	1.00	0.7
						47.00	48.00	1.00	3.14
						48.00	49.00	1.00	0.18
						49.00	50.00	1.00	1.29
BODH032						50.00	51.00	1.00	1.55
						51.00	52.00	1.00	1.96
						52.00	53.00	1.00	2.79
						53.00	54.00	1.00	2.73
						54.00	55.00	1.00	0.42
						55.00	56.00	1.00	1.03

HOLE-ID	Easting (GDA 94)	Northing (GDA 94)	mRL	Azimuth (°)	Dip (°)	Depth From (m)	Depth To (m)	Interval	Au (g/t)
						56.00	57.00	1.00	1.97
						57.00	58.00	1.00	1.28
						58.00	59.00	1.00	0.61
						59.00	60.00	1.00	4.22
						60.00	61.00	1.00	3.93
						61.00	62.00	1.00	3.22
						62.00	63.00	1.00	2.72
						63.00	64.00	1.00	0.76
						64.00	65.00	1.00	1.17
						71.00	72.00	1.00	1.65
						74.00	75.00	1.00	0.6
						79.00	80.00	1.00	0.75
						80.00	81.00	1.00	0.72
						81.00	82.00	1.00	0.79
						82.00	83.00	1.00	5.29
						83.00	84.00	1.00	0.41
						84.00	85.00	1.00	0.53
						85.00	86.00	1.00	0.38
						92.00	93.00	1.00	0.47
						118.00	119.00	1.00	0.5
						124.00	125.00	1.00	1.66
						125.00	126.00	1.00	0.25
						126.00	127.00	1.00	0.93
						127.00	128.00	1.00	1.15
						128.00	129.00	1.00	0.99
						129.00	130.00	1.00	0.26
						130.00	131.00	1.00	1.38
						131.00	132.00	1.00	0.52
						132.00	133.00	1.00	0.57
						135.00	136.00	1.00	0.34
						139.00	140.00	1.00	0.38
						179.00	180.00	1.00	0.67
BODH032						185.00	186.00	1.00	0.72
						186.00	187.00	1.00	0.59
						187.00	188.00	1.00	0.33
						188.00	189.00	1.00	0.63
						189.00	190.00	1.00	0.31
						190.00	191.00	1.00	0.12

HOLE-ID	Easting (GDA 94)	Northing (GDA 94)	mRL	Azimuth (°)	Dip (°)	Depth From (m)	Depth To (m)	Interval	Au (g/t)
						191.00	192.00	1.00	1.28
						192.00	193.00	1.00	0.33
						195.00	196.00	1.00	0.79
						196.00	197.00	1.00	0.6
						201.00	202.00	1.00	1.36
						202.00	203.00	1.00	0.56
						206.00	207.00	1.00	1.96
						208.00	209.00	1.00	0.36