



LEGEND MINING LIMITED
ANNUAL GENERAL MEETING – 18 MAY 2017
ACTIVITIES REPORT – MARK WILSON, MANAGING DIRECTOR

DISCLOSURE

This is not a disclosure document. Any material used in this presentation is a summary of selected data, and any investor in Legend Mining Limited should refer to all Legend Mining Limited ASX releases and statutory reports before considering to invest in the company.

Any forward looking information in this presentation has been prepared on the basis of a number of assumptions that may prove not to be correct. Neither Legend Mining Limited, nor its officers, employees and advisors make or give any representation, warranty or guarantee in relation to this presentation.

Legend Mining Limited reserves the right to update, amend or supplement the Information in this presentation at any time in its absolute discretion without incurring any obligation to do so.

The information in this presentation that relates to exploration results is based on information compiled by Mr Derek Waterfield who is a member of the Australian Institute of Geoscientists and is a full time employee of Legend Mining Limited.

Mr Derek Waterfield has sufficient experience which is relevant to the style of mineralisation and type of deposit under consideration and to the activity which he is undertaking to qualify as a Competent Person as defined in the 2012 Edition of the 'Australasian Code for Reporting of Exploration Results, Mineral Resources and Ore Reserves' (the JORC Code).

Mr Derek Waterfield consents to the inclusion in this presentation of the matters that relate to exploration results in the form and context in which it appears.

Located in northern
Fraser Range District

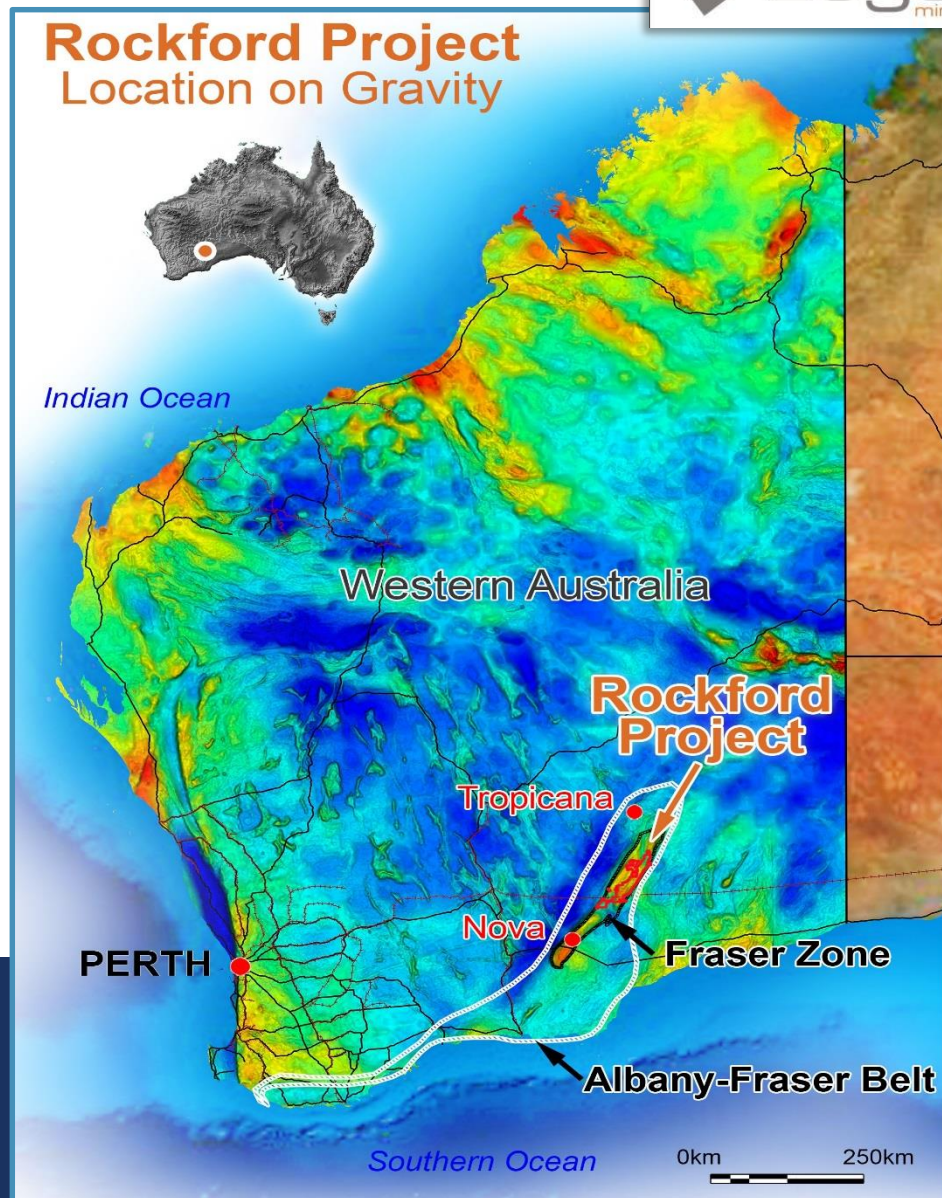
120km NE of Nova
100km S of Tropicana

Comprises nine granted
exploration licences and
three applications
covering 2,792km²

Infrastructure access

Project potential for

- Nova style Nickel-Copper
- Tropicana style Gold



- 500m line space - 300m x 300m square 'loops'
- High power ~200amp
- Unique transmitter – wave type
- Reading technique – out of loop 'slingram'





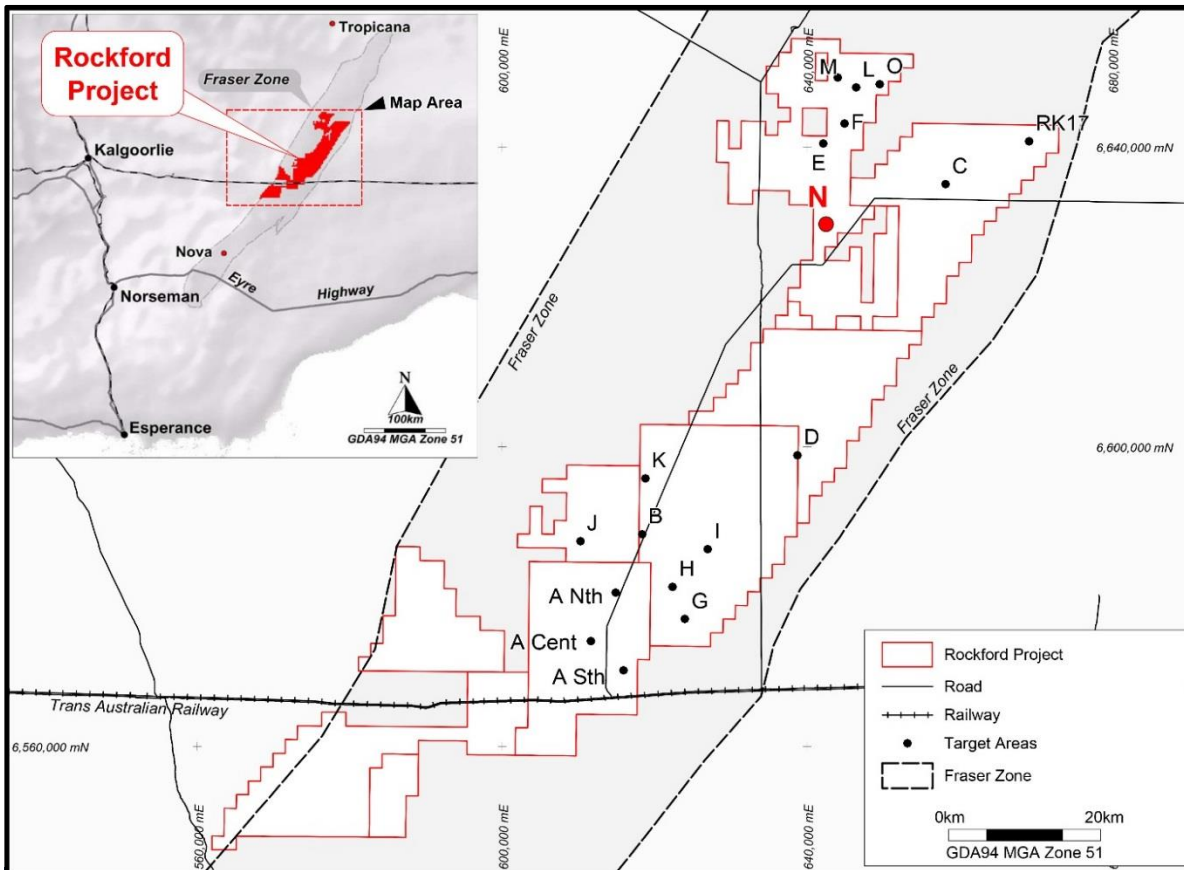
Aircore Drillrig

GEOLOGY KNOWLEDGE

- Depth of Cover
- Regolith type
- Rock type at Bottom of Hole
- Assays
- Petrology



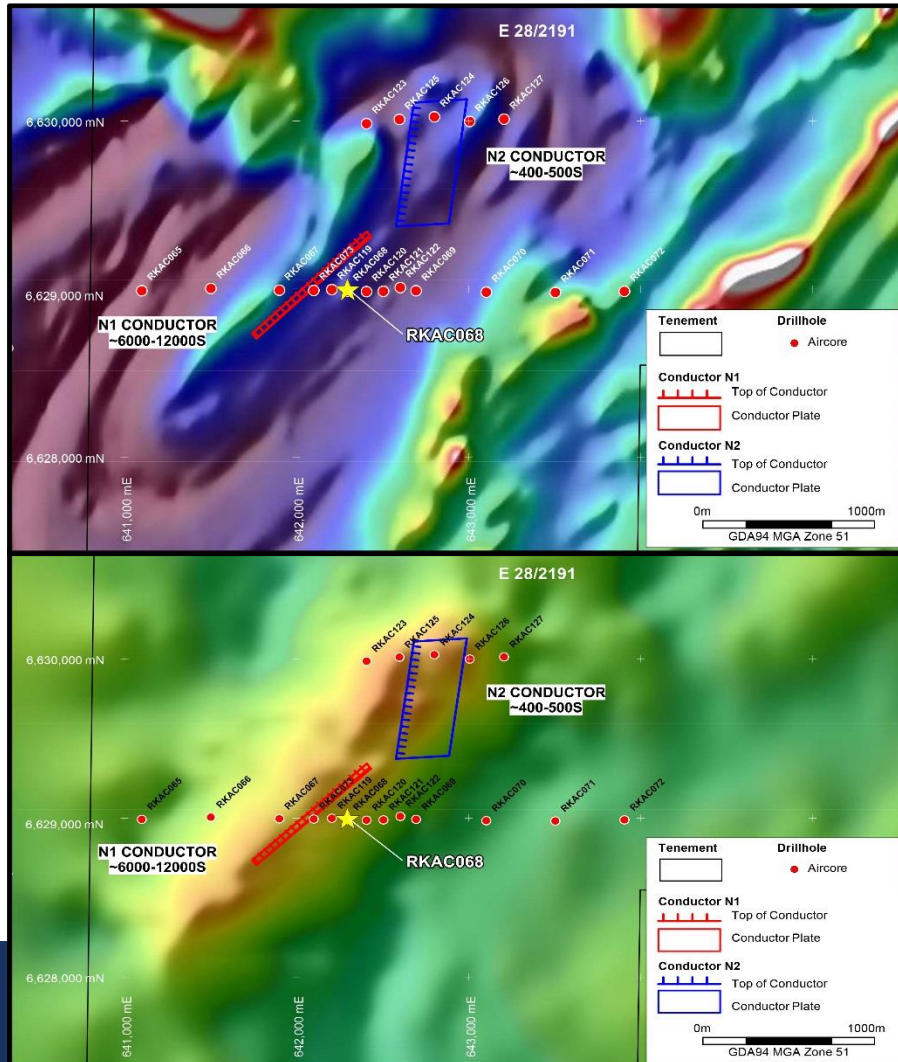
Samples ready for Assaying



- First surveys Sept 15
- Ongoing
- Qualifies for R&D tax rebate (\$1.037M 2016)
- Area selection from gravity and mag interpretation
- Only 5.1% of total project area covered

Area N Location

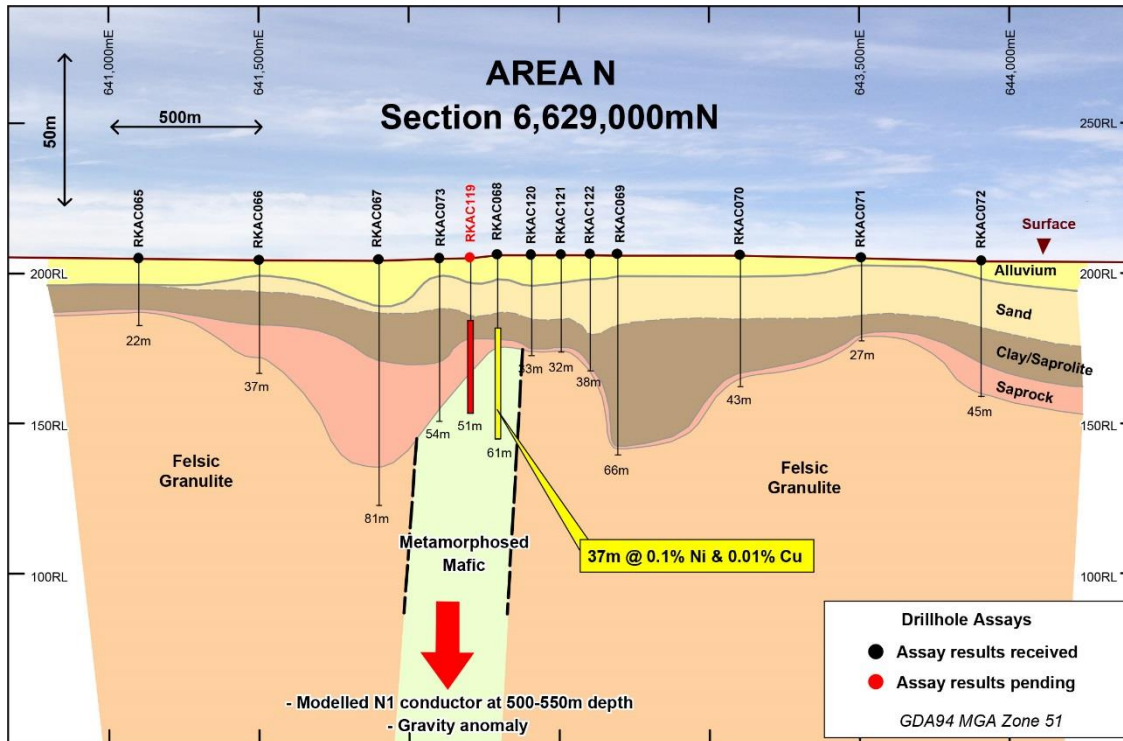
“First Pass Exploration Technique”



Area N Conductors on Aeromagnetics (top) and Gravity (bottom)

- **Dec 2015** – Moving Loop identified conductors
- **May 2017** – Fixed Loop better defines conductors
 - N1 – 850 x 300m ~ 500m deep ~ 9000S
 - N2 – 700 x 600m ~350m deep ~ 450S
- N1 conductor lies on SE margin of gravity and aeromagnetic features

“Fixed Loop enables more accurate modelling”



Aircore Drill Section at Area N

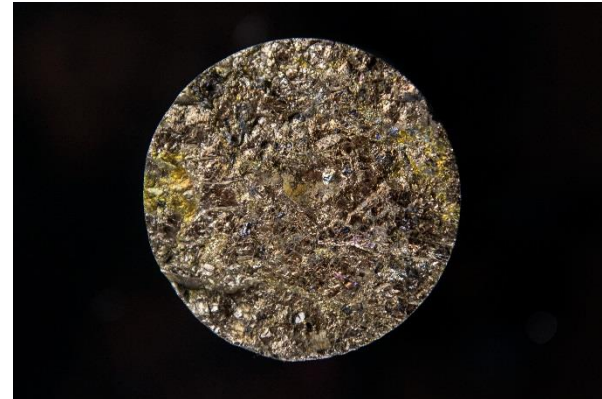
- Lithology
- Assays
- Petrology
- Updip projection of N1 conductor and gravity high



Aircore Drillhole RKAC068 (61m) at Area N

“Anomalous Assays in Regolith and Positive Petrology Report”

- RC/Diamond Drilling N1 and N2 and other TBA
- Ongoing Moving and Fixed Loop Surveys
- Ongoing Aircore Drilling Programmes





THANK YOU

LEGEND MINING LIMITED

ASX:LEG