



EXPLORING FOR LARGE HIGH GRADE GOLD DISCOVERY  
IN SOUTH AUSTRALIA

# JUMBUCK GOLD PROJECT



SOUTH AUSTRALIAN RESOURCES & ENERGY  
INVESTMENT CONFERENCE

---

May 2017

## COMPETENT PERSON STATEMENT & DISCLAIMER



- *The information that relates to exploration targets, exploration results and drilling data is based on information compiled by Nicholas (Nick) G Revell who is a member of the Australian Institute of Resources and Metallurgy and who has more than five years experience in the field of activity being reported on.*
- *Nick Revell is an employee of the Company and has sufficient experience which is relevant to the style of mineralisation and type of deposits under consideration and to the activity which he is undertaking to qualify as a competent person as defined in the 2012 Edition of the 'Australasian Code for Reporting of Exploration Results, Minerals Resources and Ore Reserves'.*
- *Mr. Revell consents to the inclusion in the presentation of the matters based on his information in the form and content in which it appears.*
- *This presentation does not purport to provide all of the information an interested party may require in order to investigate the affairs of Tyranna Resources Limited, nor shall it be construed as a solicitation to buy or sell Tyranna securities, or to engage in or refrain from engaging in any financial transaction. In preparing this presentation Tyranna did not take into account the investment objectives, financial situation and particular needs of the individual investors.*
- *Before making an investment decision on the basis of this presentation, the investor needs to consider, with or without the assistance of a financial advisor, whether the investment is appropriate in light of their particular investment needs, objectives and financial circumstances.*
- *This presentation is based on information acquired from associated companies, internal company reports and technical information believed to be reliable but Tyranna does not make any representation or warranty to its accuracy, completeness or currency. Tyranna accepts no obligation to correct or update the information or opinions expressed in it. Opinions expressed are subject to change without notice and accurately reflect the views of Tyranna at the time of presenting. Photographs, unless captioned, are not from the project area.*
- *This presentation has originated from Tyranna Resources Limited.*
- *Exploration Target (Target) Statement:  
An Exploration Target (Target) does not constitute the definition of any resource, which is compliant with the JORC Code. Target tonnages and grades contained herein are conceptual in nature and may or may not be realised through completion of further exploration and other studies on the targets described. As such, it is uncertain if further exploration will result in the determination of tonnages and grades that conform to mineral resources or ore reserves under the JORC code*

# CORPORATE OVERVIEW

## Capital Structure

Current Share Price <sup>1</sup>	2.4cps
Shares on Issue	398m
Market Capitalisation	\$10m
Cash <sup>2</sup>	\$2.6m
Listed investments <sup>3</sup>	\$2.04m
Enterprise Value	\$5m

## Board & Management

Joseph Pinto	Non Executive Chairman
Bruno Seneque	Managing Director
Nick Revell	Technical Director
Frank Lesko	Non Executive Director
Yugi Gouw	Co Sec & CFO

1. As at 19 May 2017
2. As at 31 March 2017
3. 28.9m shares in Kairos Minerals Ltd (7.4% holding) & 22.9m shares in Orinoco Gold Ltd (4.7% holding)

## Share Price : TYX

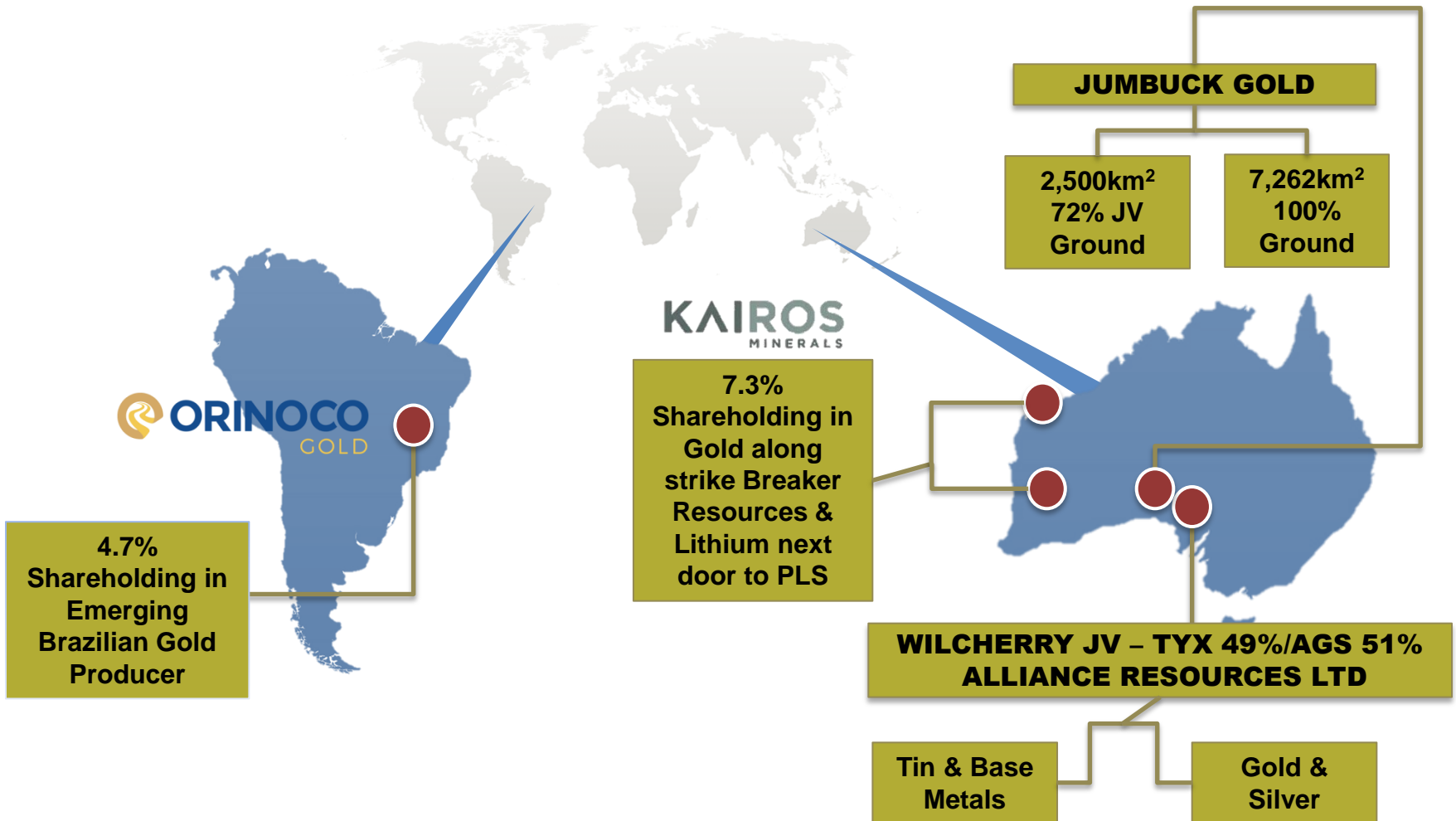


## Top Shareholders

Alliance Resources Ltd (ASX: AGS)	17.9%
Admark Investments (Joseph Pinto)	8.6%
Chembank Pty Ltd	2.5%
Mr Malcolm Thom	2.02%
Berne No 132 Nominees Pty Ltd	1.97%
Top 20 holding	46%

# TYRANNA'S ASSET PORTFOLIO

● Gold and Base Metals Projects & Corresponding Partners



# SA PROJECTS

## DOMINANT LANDHOLDING



- Tyranna controls **+9,700km<sup>2</sup>** surrounding the Challenger Gold Mine
- \$20M spent historically on exploration
- Resurgence in activity in Western Gawler Craton
- Tyranna has largest and most prospective land holding at Jumbuck

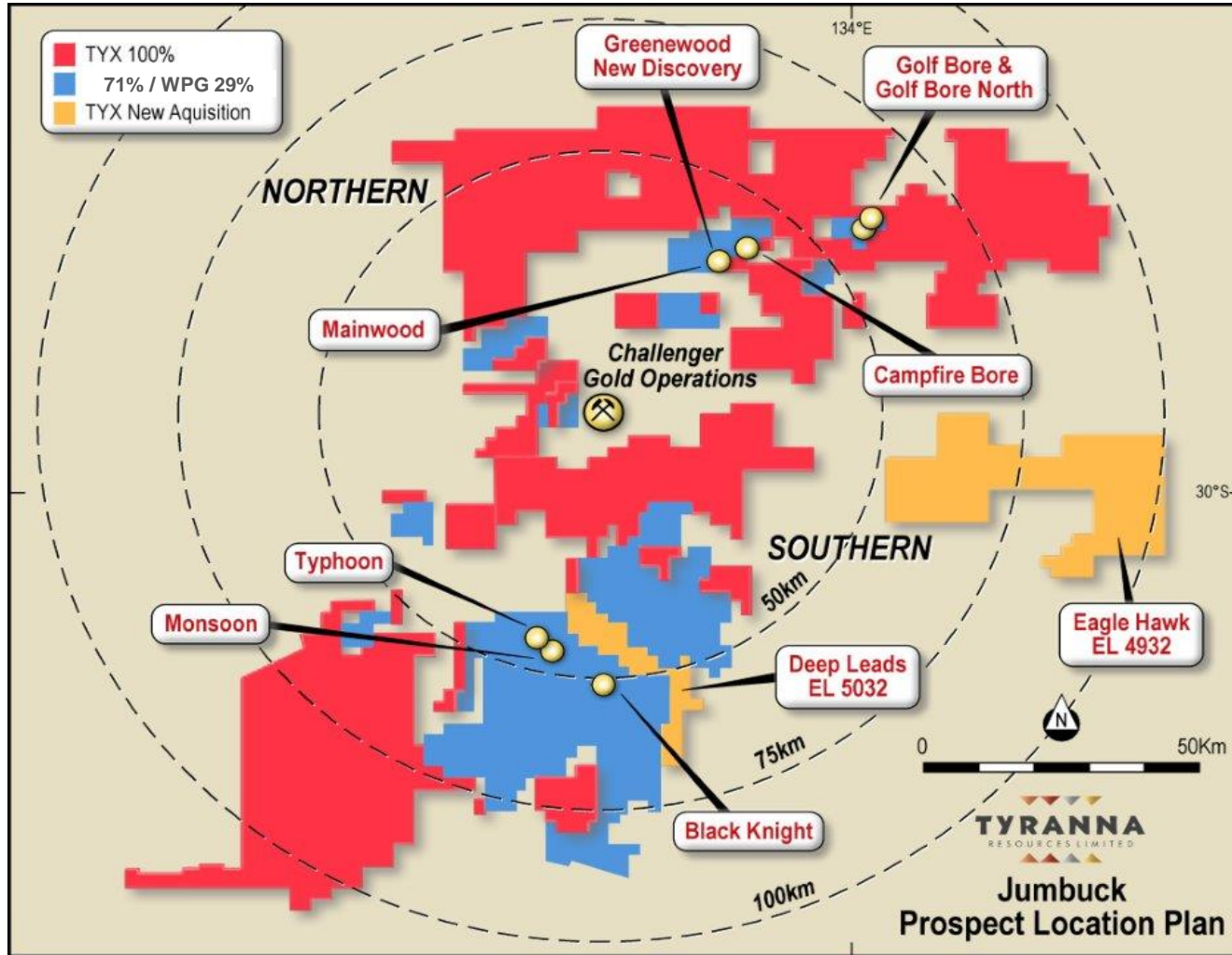


# CHALLENGER GOLD MINE

- >1Mill oz @ 6g/t Au since 2002
- 108,000Oz @ 9.52g/t Au at its peak (2005-06)
- High grade gold - surface to 1km
- New zones discovered during mining
- Challenger mill = toll treating opportunity for Tyranna
- ***Regional exploration since discovery has been sparse***



# PRIORITY PROSPECTS



# Tyranna's Maiden Gold Resource

**Table 1: Jumbuck Project inferred resource estimates January 2017**

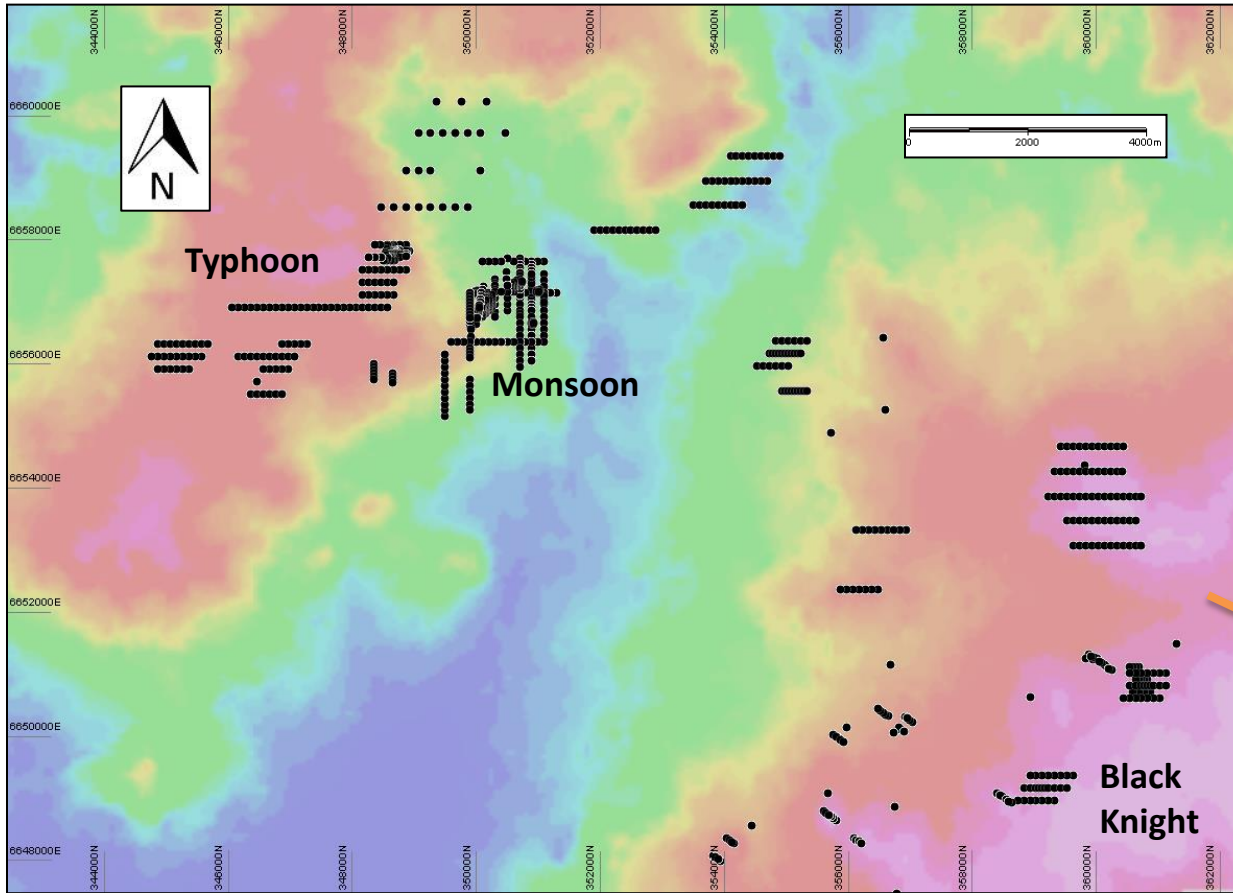
Deposit area	0.5 g/t cut off			0.8 g/t cut off		
	Mt	Au g/t	Au <u>koz</u>	Mt	Au g/t	Au <u>koz</u>
Golf Bore	2.98	1.0	96	1.42	1.5	68
Golf Bore North	0.40	0.9	12	0.15	1.2	6
<b>Combined</b>	<b>3.38</b>	<b>1.0</b>	<b>107</b>	<b>1.57</b>	<b>1.5</b>	<b>74</b>
Greenewood	0.70	1.0	23	0.34	1.4	15
Mainwood	0.36	0.9	10	0.14	1.3	6
Campfire Bore	2.45	1.0	79	1.14	1.4	51
<b>Total</b>	<b>6.89</b>	<b>1.0</b>	<b>219</b>	<b>3.19</b>	<b>1.4</b>	<b>147</b>

\*The figures in these tables are rounded to reflect the precision of the estimates and include rounding errors.

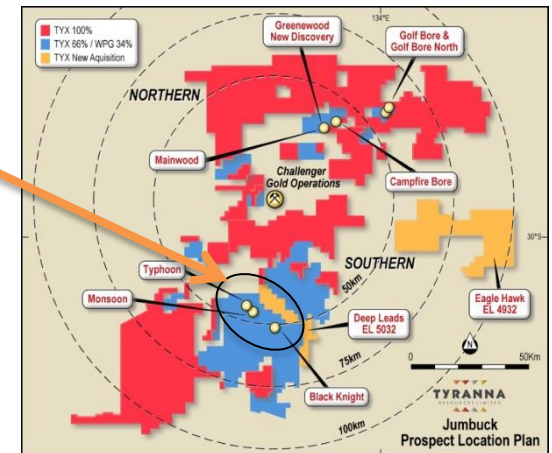


# Jumbuck Southern Prospects

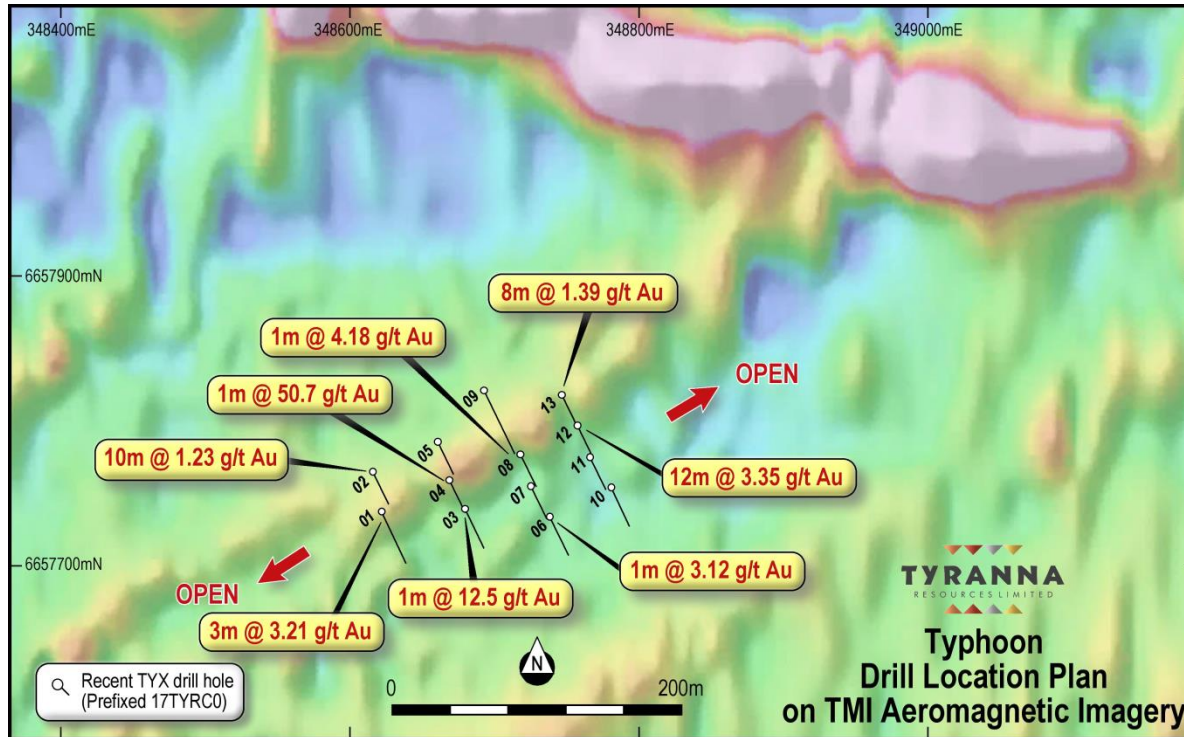
## Typhoon – Monsoon - Black Knight



Priority targets – drilling now

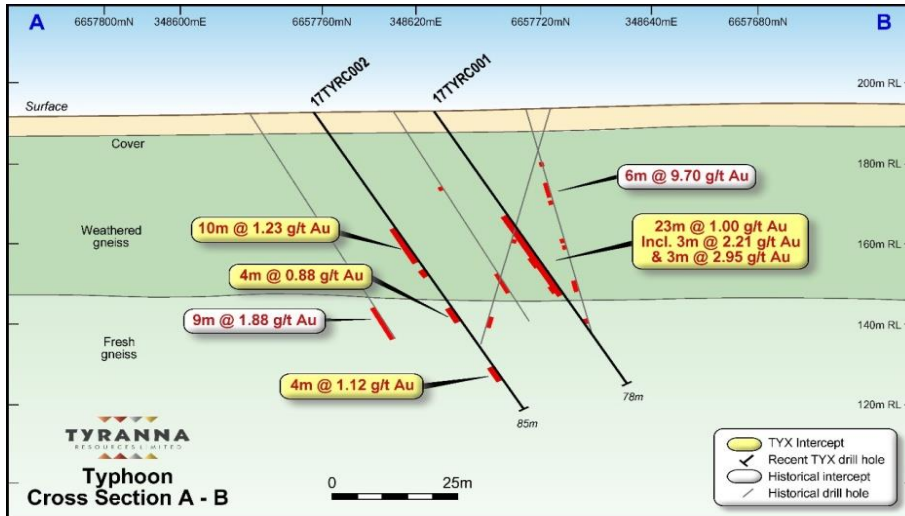
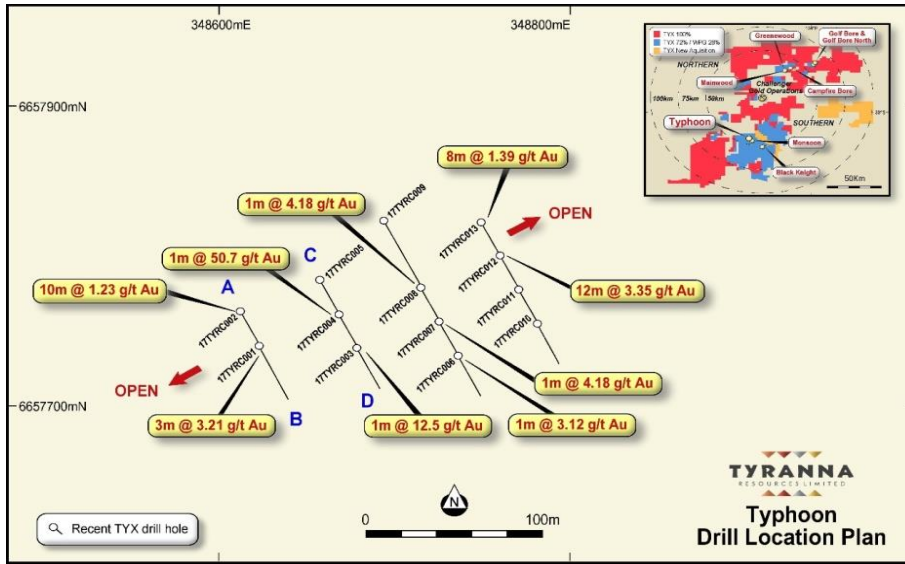


# Typhoon Gold Prospect



- Best gold intercepts positioned on or near magnetic highs
- NE/SW magnetic feature remains open along strike at both ends
- Mineralised strike of 400m, plus 400m northern extension truncated by late stage dyke. Southern extension can be traced a further 300m
- June 2017 drilling to cover strike extensions

# Typhoon Drilling

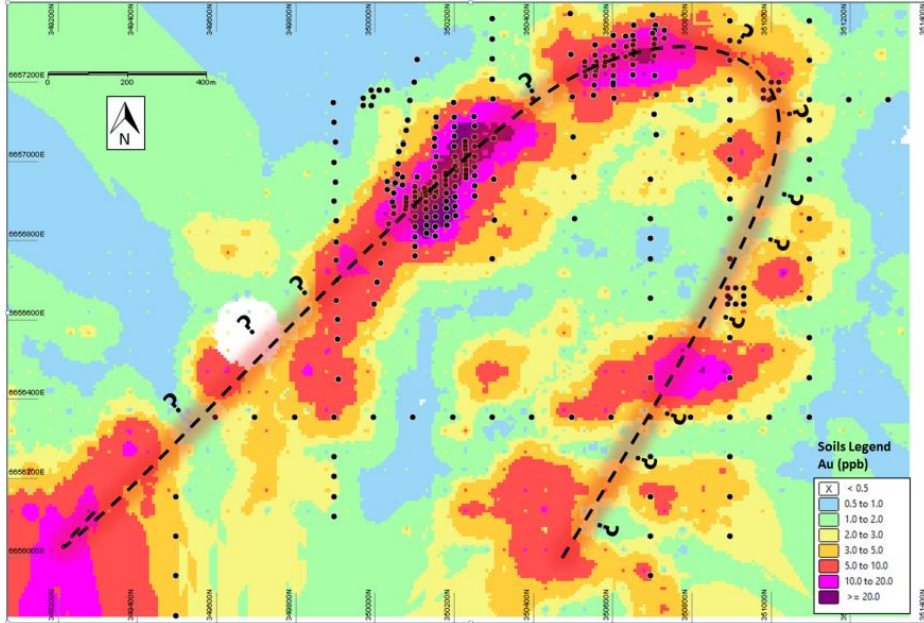


Drilling commenced in March 2017

- Mineralisation intercepted gold from surface in hole 17TYRC003 - **1m @ 2.46 g/t Au**
- **13 holes completed**
- **Bonanza intersection – 1m @ 50.7 g/t Au**
- **Numerous mineralised intercepts in all sections to date**
- **Open mineralised structure along magnetic linear feature**
- **Maiden resource estimation due 2<sup>nd</sup> half 2017**



# Monsoon



Monsoon gold in calcrete sampling results

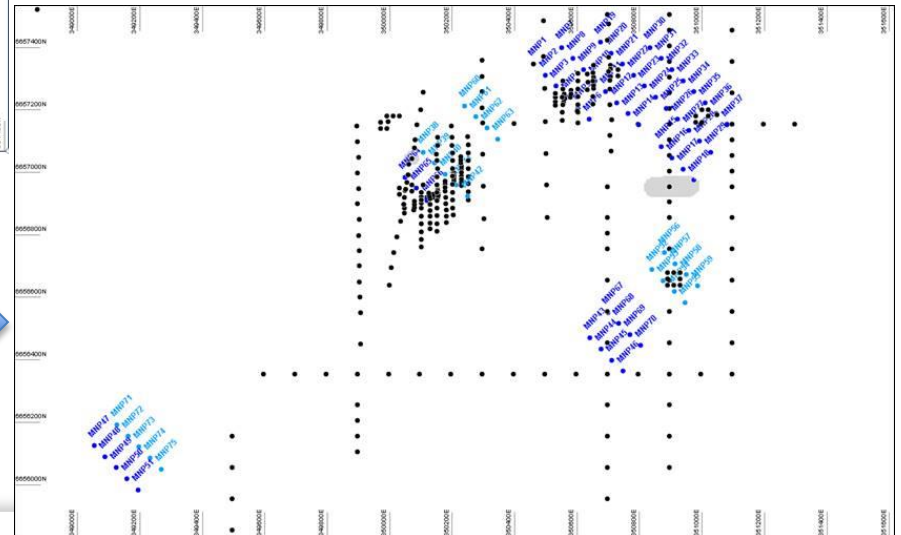
Planned Drilling at Monsoon - 75 holes planned for 5,000m



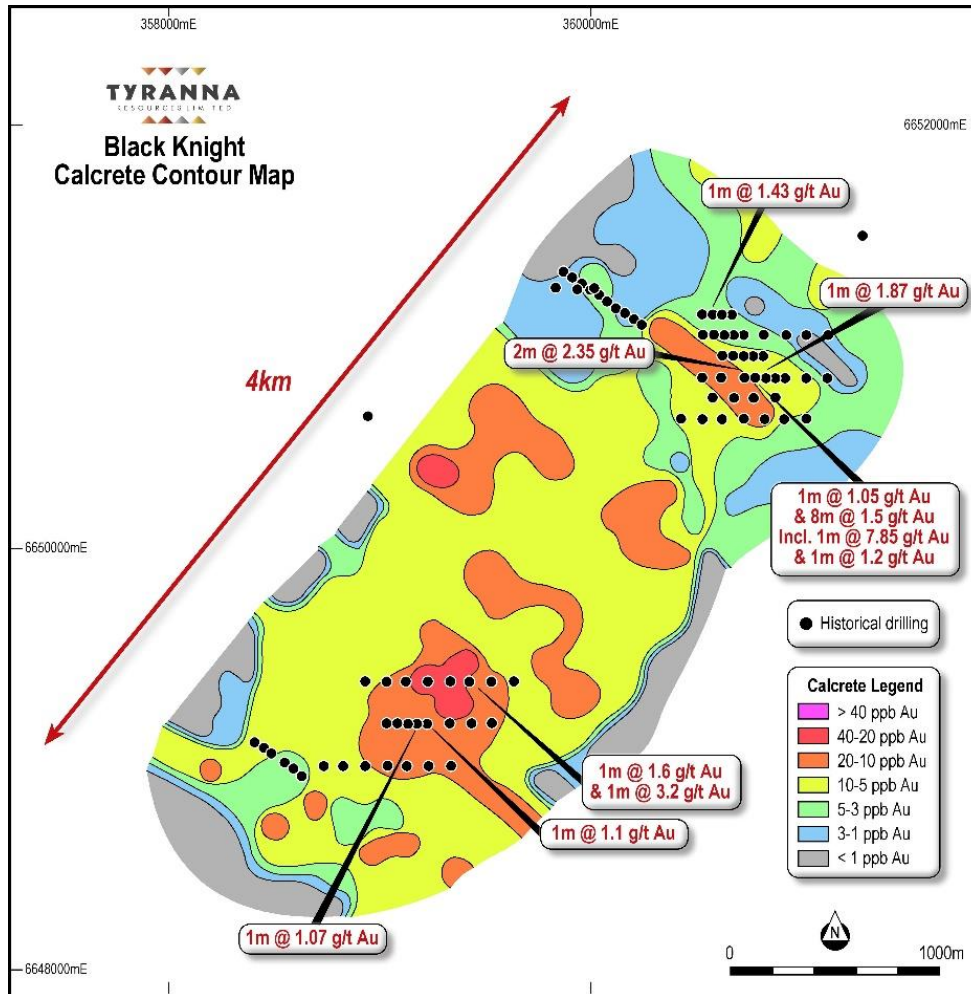
## Drilling currently underway

Historical highlight intercepts include :

- 12m @ 2.2g/t Au from 30m
- 14m @ 1.1g/t Au from 35m inc. 1m @ 8.1g/t Au from 44m
- 6m @ 3.9g/t Au from 36m
- No RC drilling before Tyranna's drill campaign
- Calcrete geochemistry suggest a fold structure with 2.5km of strike continuation, the hinge of which has not yet been adequately drill tested



# Black Knight



To be drilled after Monsoon in  
May/June 2017 ~ 1,500m RC

Calcrete sampling completed in  
Nov 2016 enhancing  
prospectivity

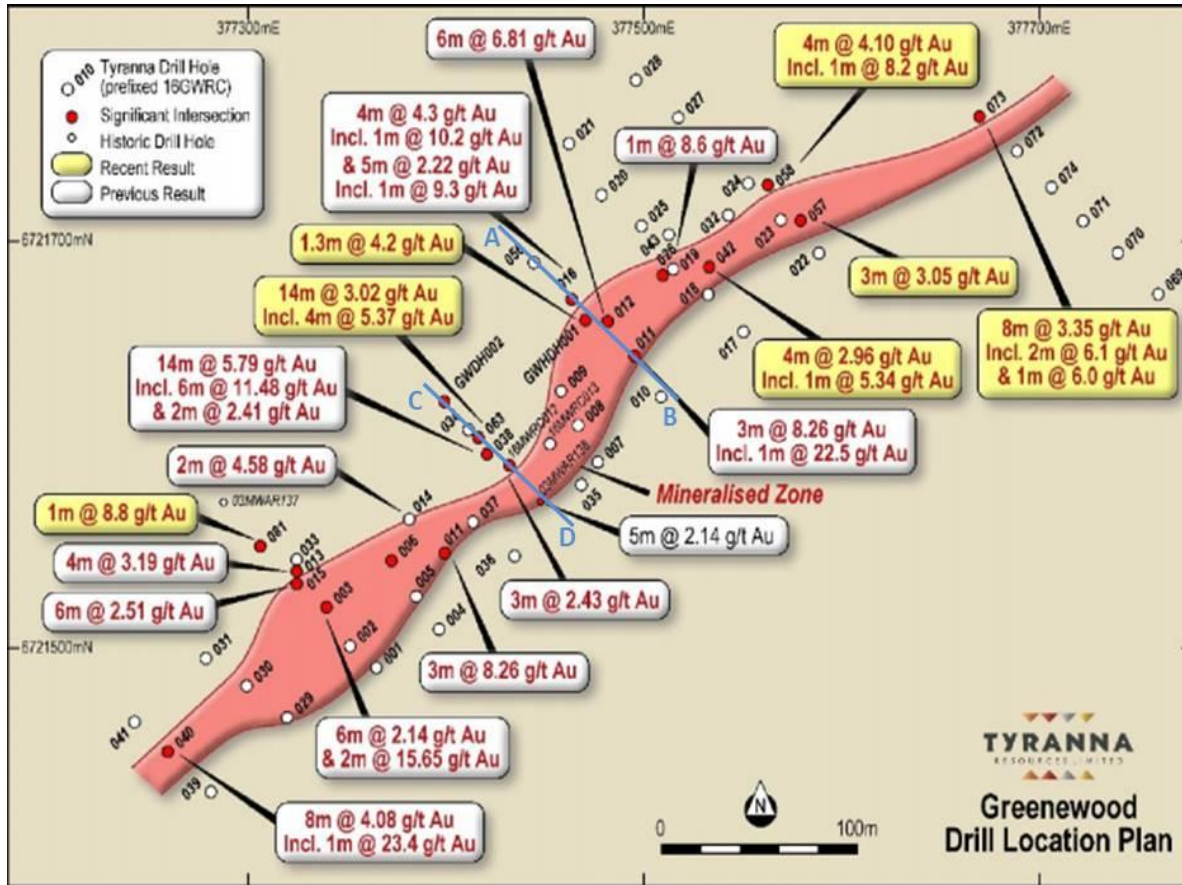
Walk up drill targets now  
confirmed

Sparsely explored with little  
calcrete sampling prior to TYX



# Greenewood

## Tyranna's First Significant Discovery



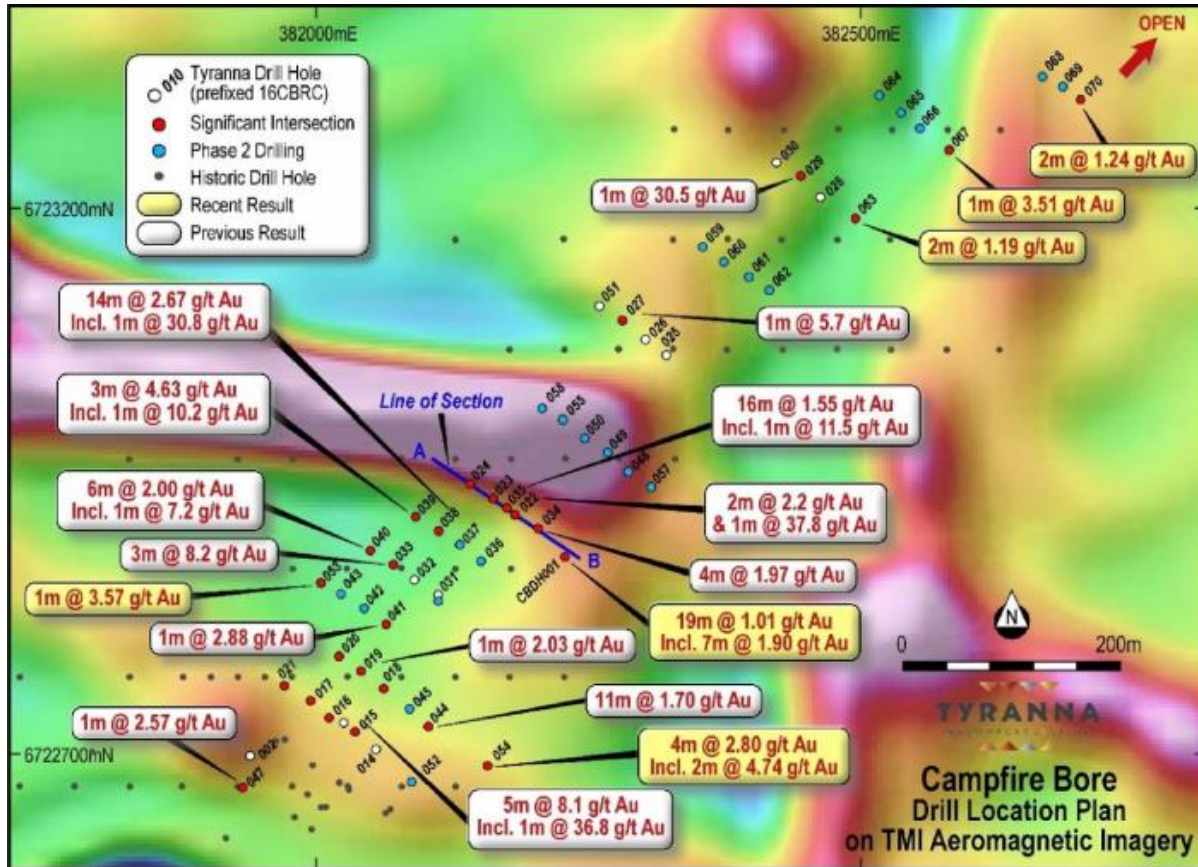
- Increase resource by infill drilling in zones along strike
- Increase resource by deeper drilling down-dip
- Increase resource by northern extensional drilling to follow up hole 073 – 8m@3.35g/tAu
- Strike increased to 620m

Highlight intercepts include:

- 14m @ 5.8g/t Au from 35m
- Inc 6m @ 11.5g/t Au from 35m
- 8m @ 4.08g/t Au from 20m
- 6m @ 6.81g/t Au from 53m
- 3m @ 8.26g/t Au from 26m
- 6m @ 2.17g/t Au from 36m
- 8m @ 3.35g/t Au from 55m

# Campfire Bore

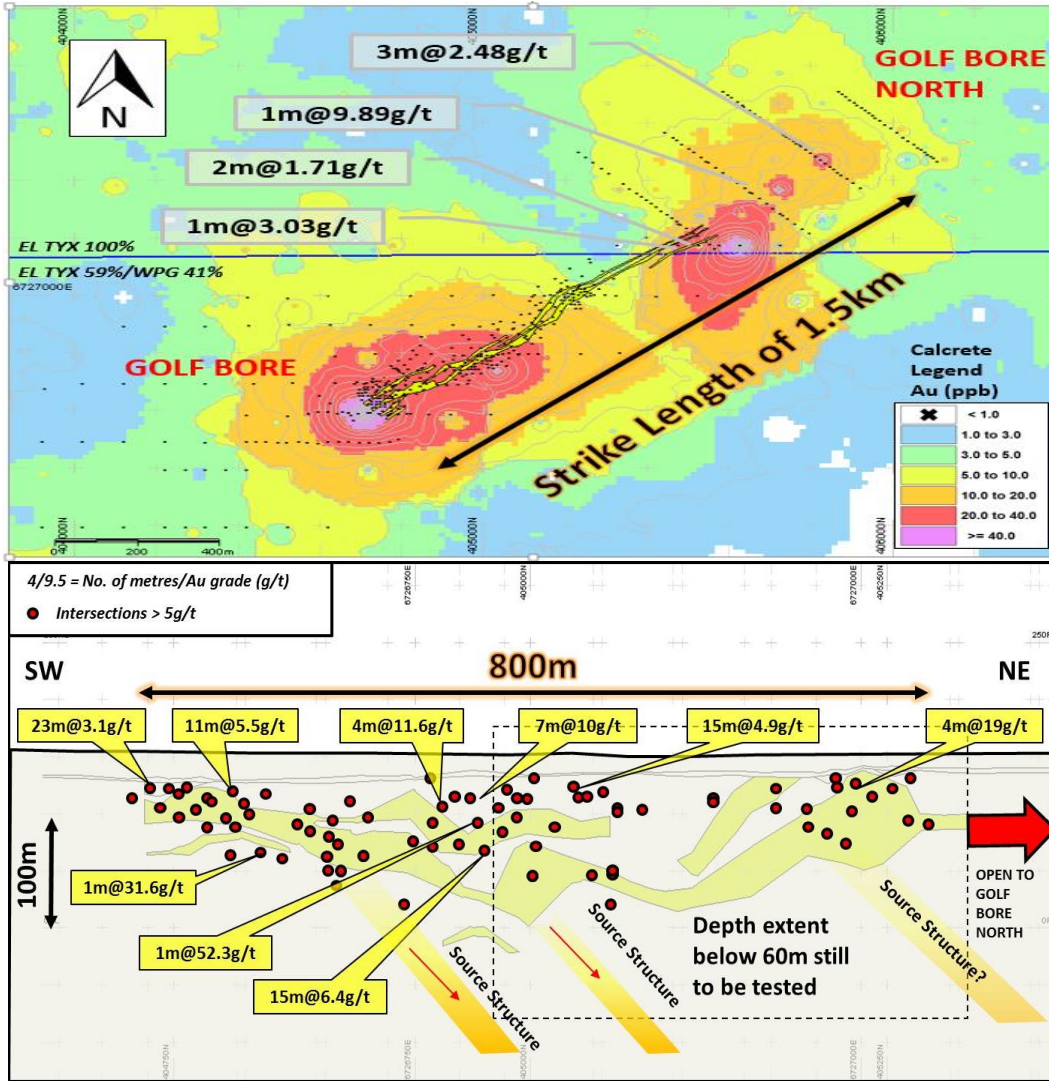
## Highest Grade Gold Hits to Date



- Increase resource by drilling 200m untested strike south of 16CBDH001 – 19m@1.01g/tAu inc 7m@1.9g/tAu
- Central zone open at depth. To be drill tested – potential to increase resource.
- Structure open to the north
- Mineralised strike 1.5km

- Highlight intercepts include:
- 14m @ 2.7g/t Au from 74m
  - 3m @ 8.2g/t Au from 32m
  - 5m @ 8.16g/t Au from 39m
  - 6m @ 2.7g/t Au from 39m
  - 3m @ 4.6g/t Au from 37m

# Golf Bore



- Near surface, open-pit potential
- Strike length of 1.5km, including Golf Bore North confirmed to date
- Untested below 120m down hole
- Plunging NE structures identified - same as Challenger
- Metallurgical work results show greater than 90% recovery of Gold achieved using gravity concentration followed by cyanidation – ore suitable for processing in conventional CIL/CIP plant
- Resource estimation underway

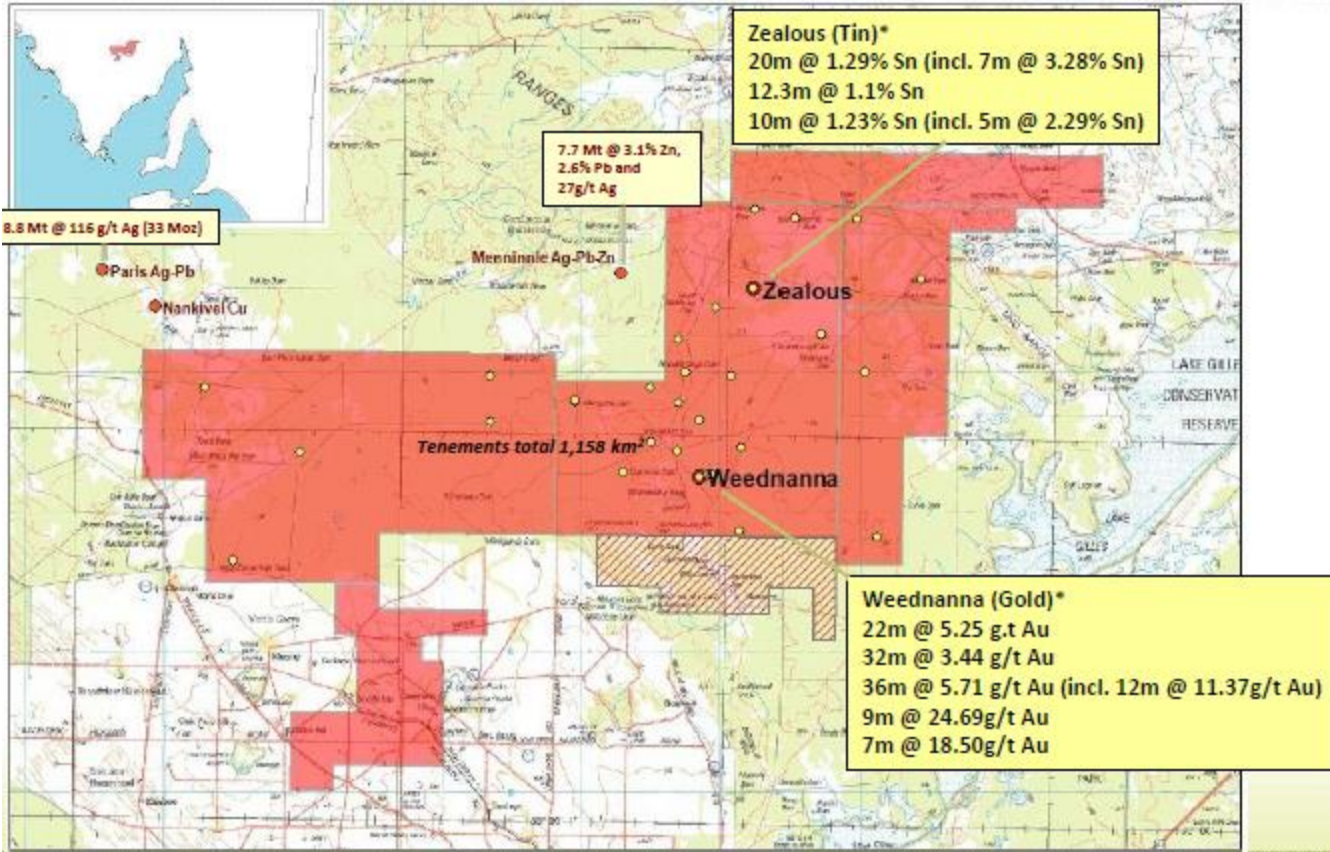


# Wilcherry Project JV – Alliance Resources/Tyranna

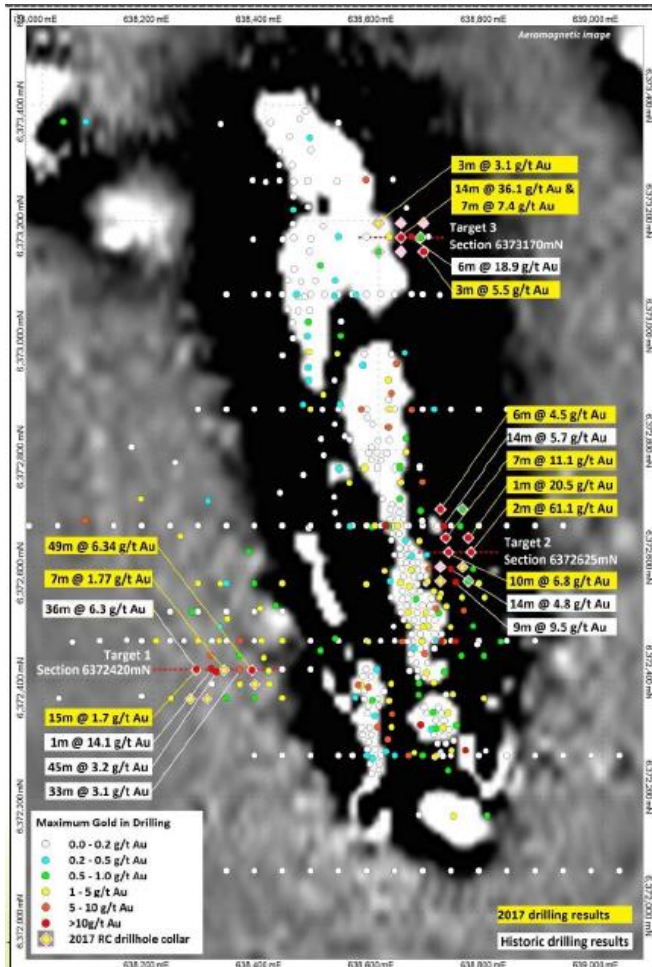
Tyranna 49% : Alliance 51%  
 TYX fully funding JV participation

First 12 month activity to date:

- Heli EM (XCITE) to test for conductors – results in for Zealous & Telephone Dam – completed. Drilling commenced May 2017.
- Screening of historic drilling pulps by portable XRF analyses prior to more accurate multi-element analyses yields gold results - completed
- Zealous tin prospect – re-log & re-interpret prior to RC and/or diamond drilling – completed.
- Weednanna gold prospect – drilling results in bonanza gold intersections.



# Wilcherry Project JV Weednanna - Bonanza Gold Results

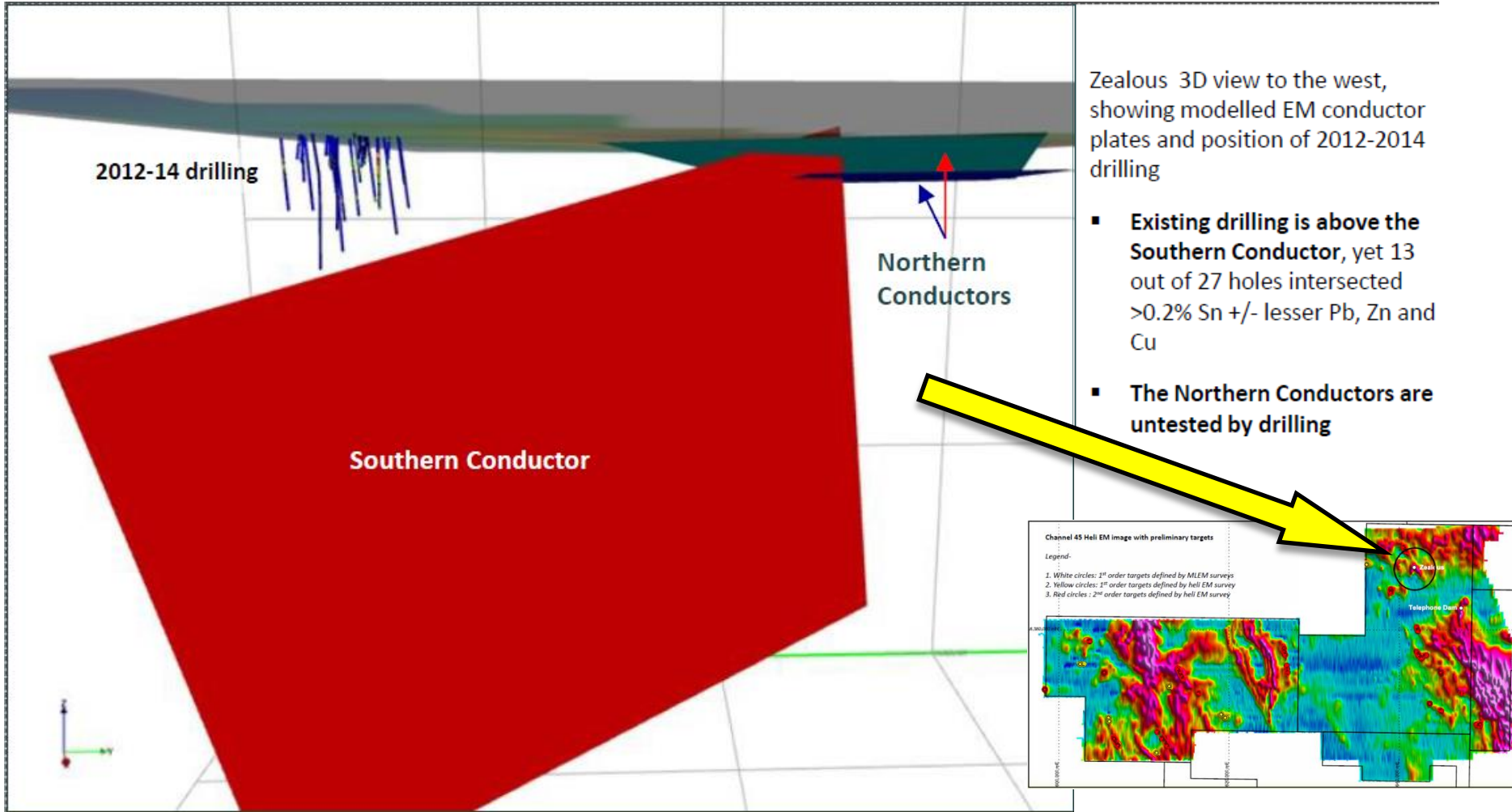


- 24 hole RC drilling program completed in March 2017 to test the strike, dip and plunge continuity of three high-grade gold shoots, referred to as Targets 1 to 3
- Bonanza gold intersections were returned, including <sup>(1)</sup>:
  - 14m @ 36.1 g/t Au from 118m (incl. 5m @ 95.6 g/t Au from 120m) and 7m @ 7.4 g/t Au from 147m (incl. 1m @ 40.0 g/t Au from 149m)
  - 49m @ 6.3 g/t Au from 45m (incl. 21m @ 10.7 g/t Au from 48m)
  - 2m @ 61.1 g/t Au from 167m
  - 7m @ 11.0 g/t Au from 82m (incl. 4m @ 17.6 g/t Au from 84m)
  - 10m @ 6.8 g/t Au from 79m (incl. 3m @ 15.5 g/t Au from 81m)
  - 3m @ 5.5 g/t Au from 144m
- Gold mineralisation is hosted by altered granite and gneiss (west) and sulphide replacement of magnetite on the margin of a magnetite skarn/calc-silicate (east)
- Further drilling is planned in May-June to test for extensions to, and infill, the recent high-grade intercepts at Targets 1 to 3 (27 holes for 4,600 m)
- Additional high-grade targets exist within the 1.3 km mineralised strike
- A detailed review of the geology is underway to build a 3D geological model with a view of defining a mineral resource

(1) Refer Alliance's ASX announcements dated 3 April 2017 and 10 April 2017



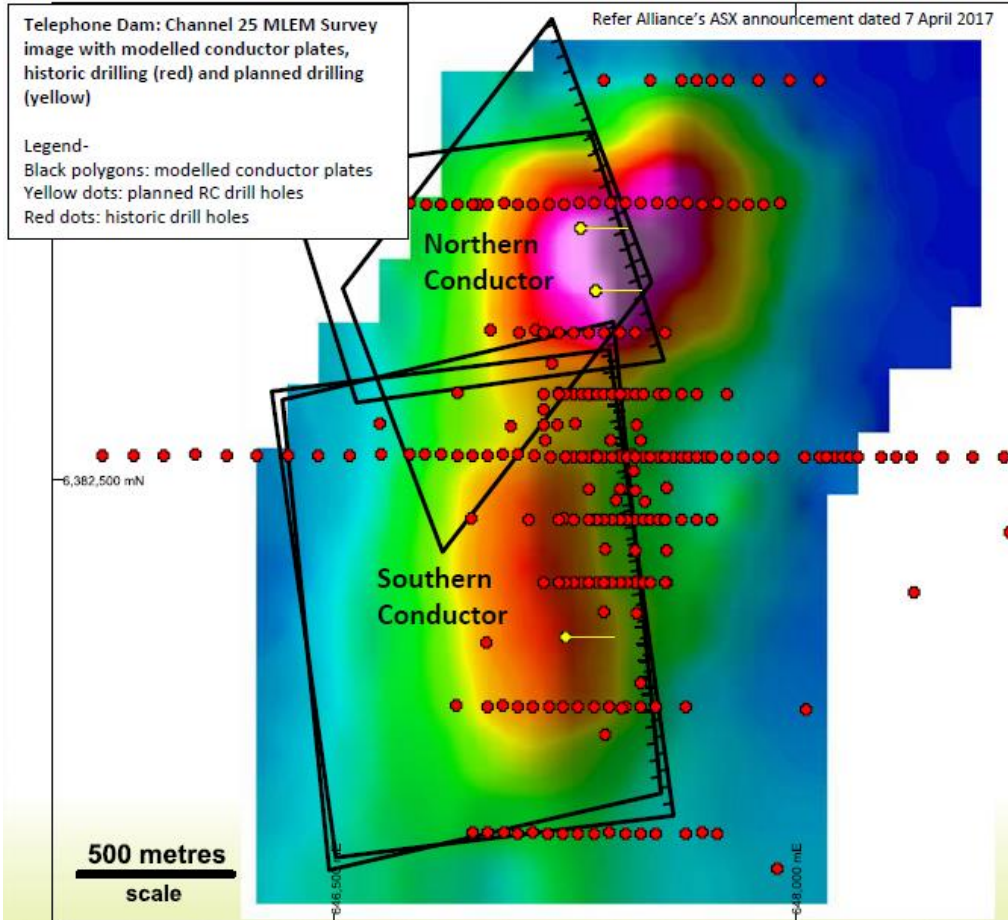
# Wilcherry Project JV – Zealous



Zealous 3D view to the west, showing modelled EM conductor plates and position of 2012-2014 drilling

- Existing drilling is above the Southern Conductor, yet 13 out of 27 holes intersected >0.2% Sn +/- lesser Pb, Zn and Cu
- The Northern Conductors are untested by drilling

# Wilcherry Project JV – Telephone Dam



## Two main bedrock conductors:

- Northern Conductor, NNW striking (~1000m x 1000m), moderate strength, SW dipping, depth to top ~150m
- South Conductor, NW striking, (~1500m x 1000m), low conductance, shallow SW dipping, depth to top ~25-50m

Explored since the 1980's by Shell, Billiton and Aberfoyle for a Broken Hill style deposit and then by Trafford

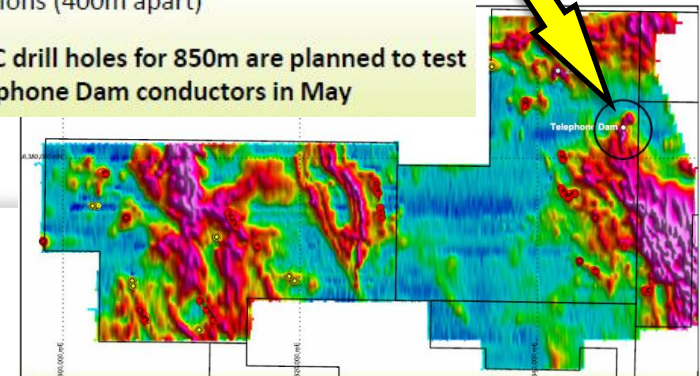
Significant historic intercepts include:

- 92m @ 2.28% Pb+Zn & 51ppm Ag from 60m in 09TDRC008
- 12m @ 6.53% Pb+Zn & 93.3ppm Ag from 158m in 11TDRC009
- 24m @ 3.15% Pb+Zn from surface in 08TDRC001

Southern Conductor relatively well tested

Northern Conductor peak conductivity between drill sections (400m apart)

Three RC drill holes for 850m are planned to test the Telephone Dam conductors in May



# Share Price Catalysts

- Exploring for a large high grade gold discovery – drilling now at Typhoon/Monsoon
- Extensive drilling program for 2017 calendar year, started in March
- 15,000 – 20,000 metres of drilling planned for 2017 calendar year
- High grade gold open pit targets
- Proximity to producing mine – Challenger Gold Processing Plant operated by WPG Resources Ltd
- Well funded & strong backing