



STRATEGIC MINERALS
CORPORATION N.L.

31 MAY 2017

ASX ANNOUNCEMENT

AGM PRESENTATION - AMENDED

The following Presentation has been amended to remove references to Exploration Potential. Please refer to "Resource Update for Big Vein South" issued on 1 March 2017 for full details including references to Exploration Potential available at www.stratmin.com.au.

Jay Stephenson
COMPANY SECRETARY



Strategic Minerals

AGM 2017

Presentation



DISCLAIMER

Purpose of this document

This presentation has been prepared by Strategic Minerals Corporation ("SMC") for general information only using the information available to SMC at the time of publication.

No reliance

The information contained in this presentation is not investment, tax, accounting, legal or financial product advice and is not intended to be used as the basis for making any investment decisions. The presentation has been prepared without taking into your account the investment objectives, financial situation or particular needs of any particular person.

Exclusion of representations or warranties

No representation or warranty, express or implied, is made as to the fairness, accuracy, completeness or correctness of the information, opinions and conclusions contained in this presentation. To the maximum extent permitted by law, none of SMC's directors, employees or agents, nor any other person accepts and liability, including, without limitation, any liability arising out of fault or negligence, for any loss arising from the use of the information contained in this presentation. In particular, no representation or warranty, express or implied is given as to the accuracy, completeness or correctness, likelihood of achievement or reasonableness of any forecast, prospects or returns contained in this presentation nor is any obligation assumed to update such information. Such forecast, prospects or returns are by their nature subject to significant uncertainties and contingencies. Before making any investment decisions, you should consider whether an investment is appropriate in light of your particular investment needs, objectives and financial circumstances. Past performance is no guarantee of future performance. You should seek professional advice from your accountant, financial adviser, stock broker, lawyer or other professional adviser before making any investment decision.

Forward looking information

Certain statements in this presentation constitute "forward looking information" that is based on expectations, estimates and projections as of the date of this presentation. These statements are subject to risks and uncertainties. The forward looking information should not be relied upon as representing the view of SMC after the date of this presentation. SMC has attempted to identify important factors that could cause actual actions, events or results to differ materially from those current expectations described in the forward looking information. However, there may be other factors that cause actions, events or results not to be as anticipated, estimated or intended and that could cause actual actions, events or results to differ materially from current expectations. There can be no assurance that the forward looking information will prove to be accurate, as actual results and future events could differ materially from those anticipated in such statements. Accordingly, the reader should not place undue reliance on the forward looking information. These factors are not intended to represent a complete list of the factors that could affect the forward looking information.

Events after the date of this document

Statements in this presentation are made only as of the date of this presentation unless otherwise stated and the information in this presentation remains subject to change without notice. SMC is not responsible for updating nor undertakes to update this presentation.

Competent Person Statement

The information in the report to which this statement is attached that relates to BVS Exploration Results is based on information compiled by Alistair Grahame, a Competent Person who is a Member of The Australian Institute of Geoscientists. Mr Grahame is a full-time employee of Strategic Mineral Corporation NL. Mr Grahame has sufficient experience that is relevant to the style of mineralisation and type of deposit under consideration and to the activity being undertaken to qualify as a Competent Person as defined in the 2012 Edition of the 'Australasian Code for Reporting of Exploration Results, Mineral Resources and Ore Reserves'. Mr Grahame consents to the inclusion in the report of the matters based on his information in the form and context in which it appears.



CORPORATE OVERVIEW

CAPITAL STRUCTURE

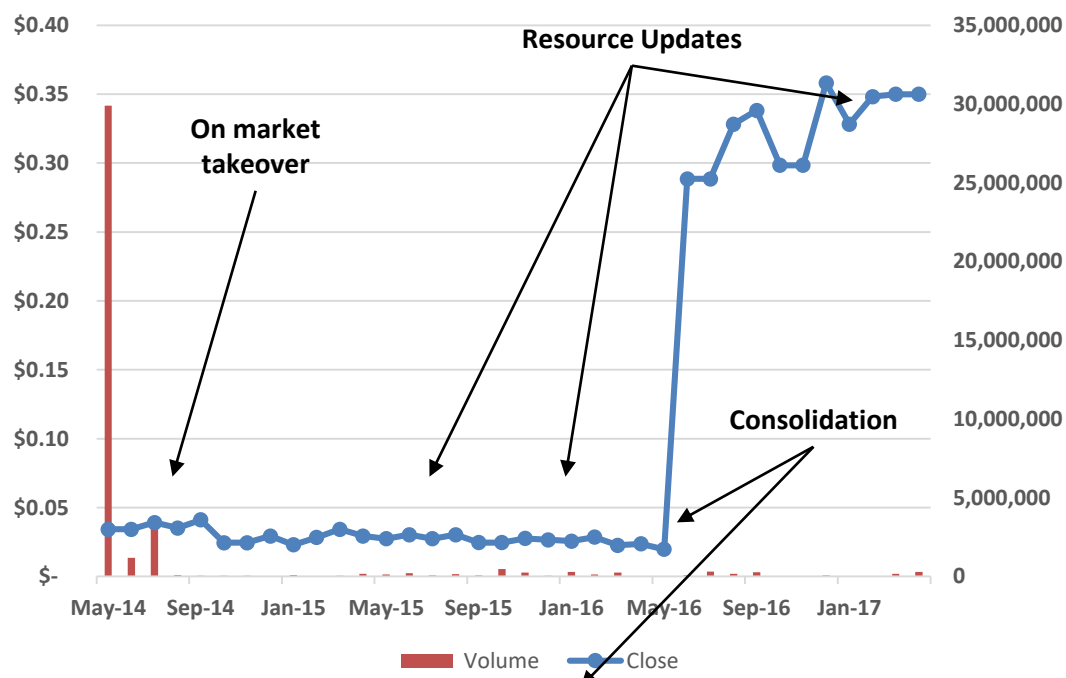
Share Price	\$0.35
Shares on Issue	69 M
Market Cap	\$24.17 M
Cash (30 May 2017)	\$2 M

BOARD OF DIRECTORS

Laif McLoughlin	Executive Chairman
Christopher Wallin	Non-Executive Director
Jay Stephenson	Non-Executive Director and Comp Sec

MAJOR SHAREHOLDERS

QGold	70.5%
HSBC Custody Nom	4.17%
J P Morgan Nom	3.48%
HSBC Custody Nom	3.17%
Ventureline PL	2.94%



Price & Vol	Apr 15	Apr 16	Oct 16	Feb 17	Mar 17
Closing price (\$)	0.0293	0.0236	0.298	0.348	0.350
Closing Monthly Vol	155K	10K	22K	31K	169K
Closing Monthly Liquidity	Less than 1%	Less than 1%	Less than 1%	Less than 1%	Less than 1%

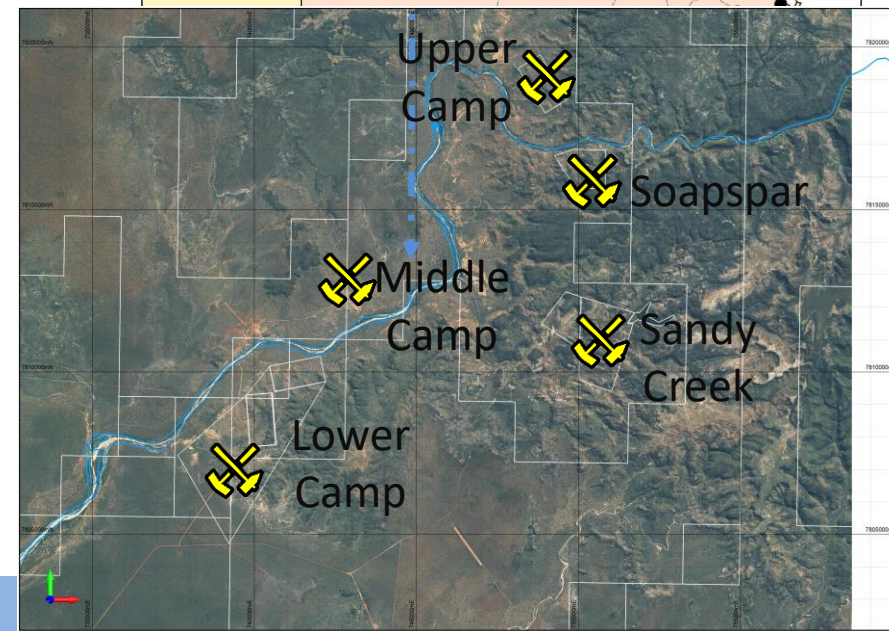
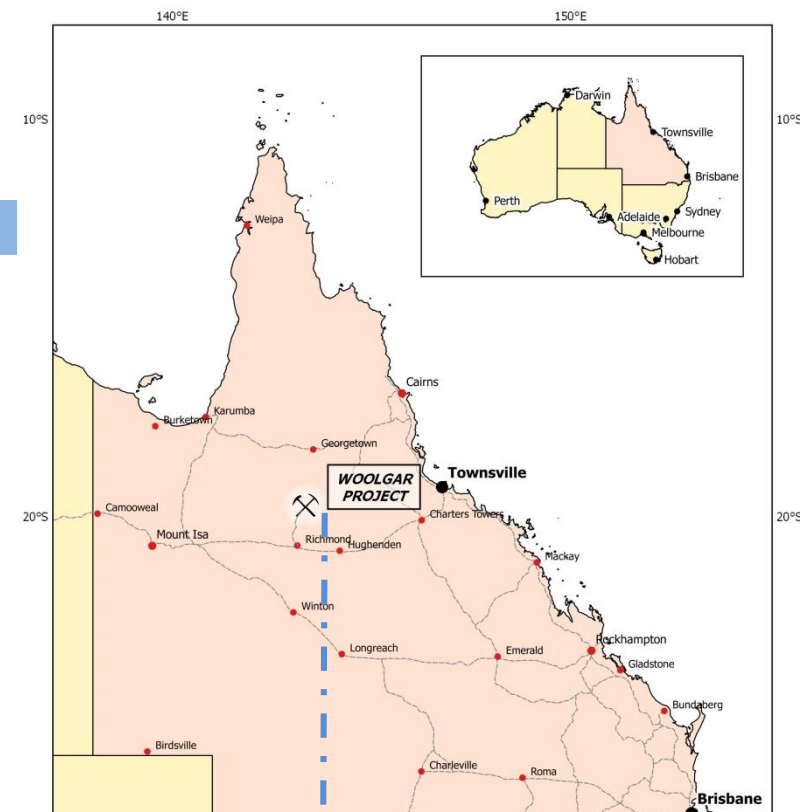


PROJECT OVERVIEW

- Located approx. 120 km north of Richmond
- Modest gold rush in the 1880's when alluvial gold was discovered - Small-scale reef mining (of the mesothermal) continued intermittently until 1984 along fifteen kilometres of the Woolgar trend.
- In 1980's discovery of the epithermal style gold veins in the Sandy Creek – these were recognised as having the potential to host a major gold deposit and became the focus of exploration until 2008/9 through several JV's including Barrick and Oxiana.

TENEMENT PORTFOLIO

- Substantial portfolio of Woolgar Tenements and Production Tenures covering an area of 493 km² over prospective areas within an area 31 kilometres north to south and 26 kilometres east to west,
- 5 X Exploration Permits – Approved Project Status for: EPM 9599, EPM 11886, EPM 13942, EPM 14060 and 14209.
- 1 X new Exploration Permit – 26263
- 8 X existing Mining Leases – 2728, 2739, 2729, 2642, 2793, 90044, 90123, 90238
- 1 X Mining Lease Application – North Star MLA 90238
- Established Exploration Camp



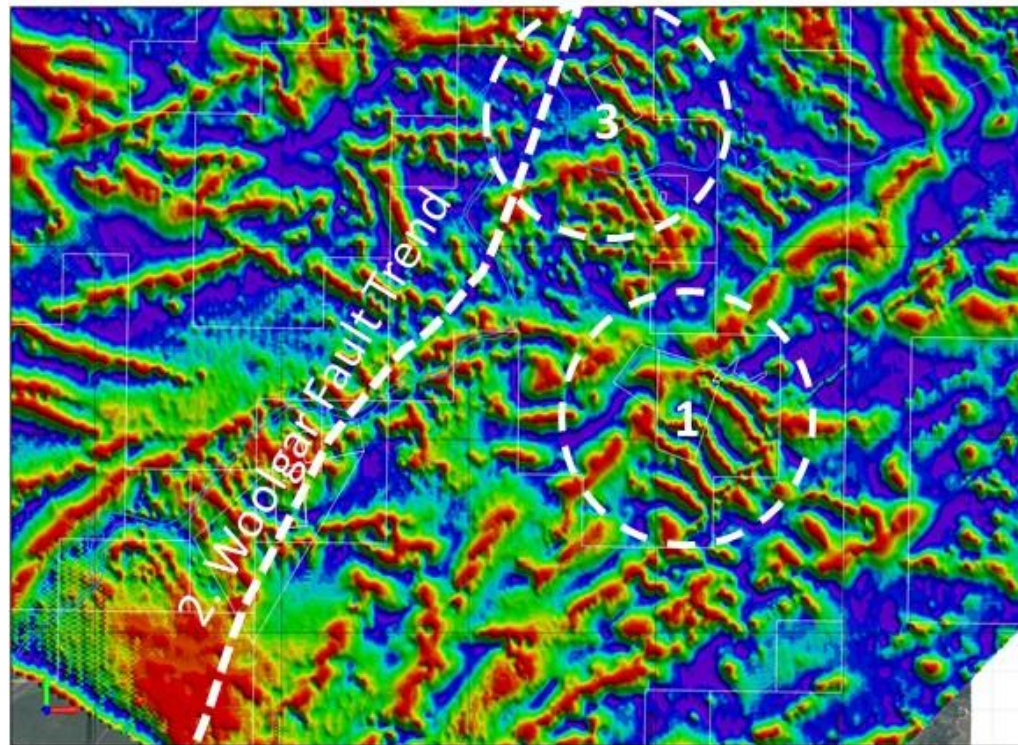


GEOLOGICAL & MINERALISATION LANDSCAPE

- Geology consists of Proterozoic metamorphic rocks, which have been intruded by several igneous units.
- Overlain by several generations of sedimentary sequences, predominantly of Jurassic age, with extensive areas of recent (Quaternary) alluvial deposits

There are three main types of mineralisation: epithermal veins, shear-hosted mesothermal veins and intrusive related gold:

1. The epithermal mineralisation occurs in the eastern Sandy Creek sector with minor occurrences along the Woolgar Fault Zone.
2. The mesothermal veins are concentrated along the Woolgar Fault Zone, trending north-northeast through the Lower, Middle and Upper Camps.
3. The intrusive related mineralisation is predominantly distributed across the northern and central prospects, with lesser occurrences in the Lower Camp.



RESOURCES

- JORC 2012 for BVS deposit of 18.4Mt (mainly Inferred) at 2 g/t, containing 1,173,000 oz. gold at a 0.75g/t cut-off (refer to the 2016 SMC Annual Report issued 30th March 2017 for more details).
- Please refer to 2016 SMC Annual Report issued 30th March 2017 for the summary of JORC 2004 Resources outside the Big Vein South and Big Vein Central deposits.

Category	Mt	Au g/t	Au kozs	Density t/m ³
Measured	0.2	2.3	11	2.59
Indicated	4.8	2.1	324	2.69
Inferred	13.4	2.0	839	2.70
Total	18.4	2.0	1,173	2.70

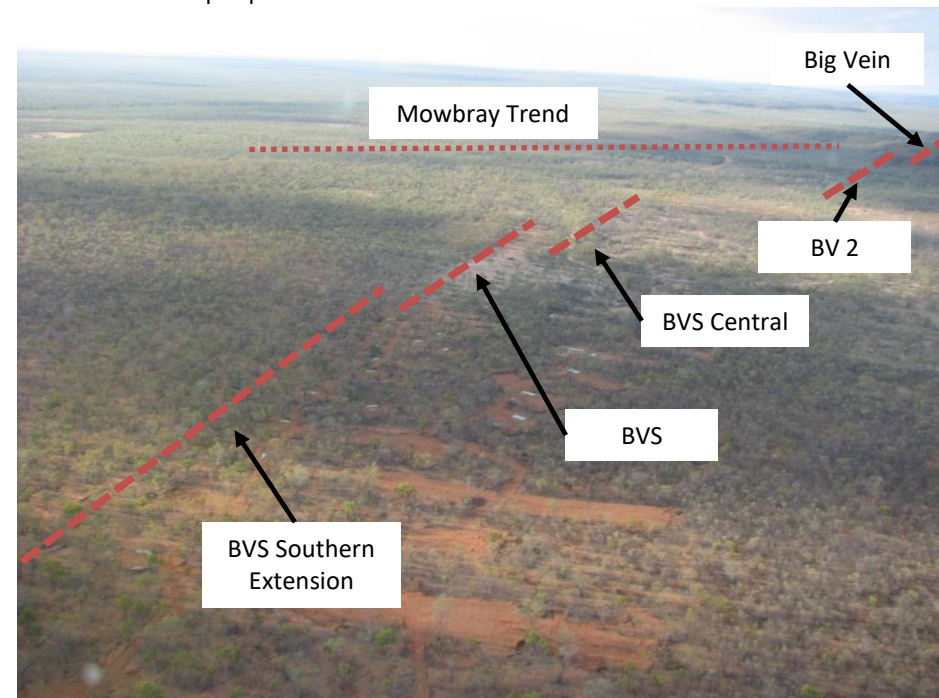
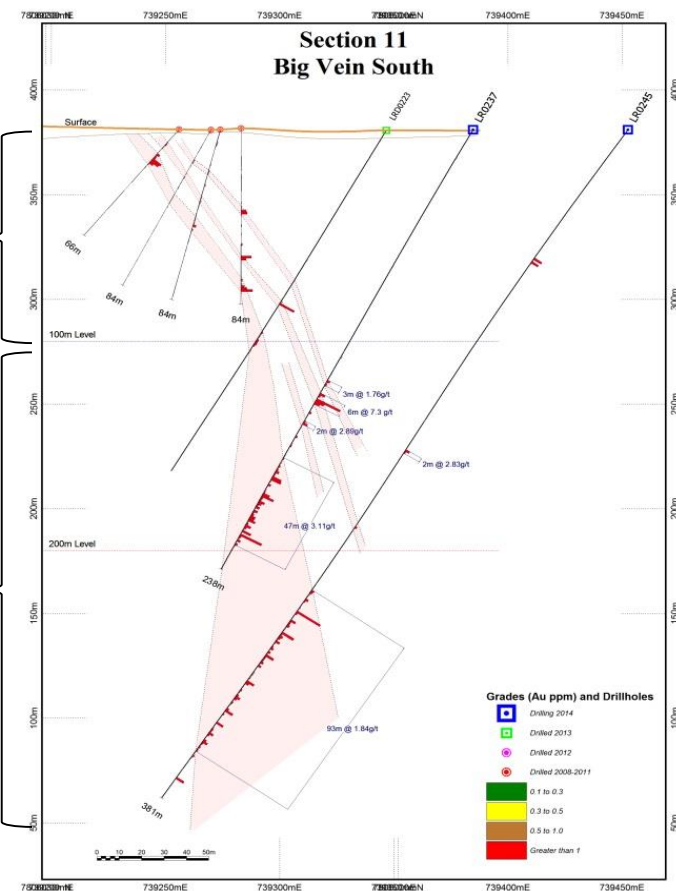


THE BVS SUCCESS STORY

- BVS (Central and Southern) prospect was first drilled by Strategic in 1997
- Some drill testing was undertaken by Oxiana in 2006
- SMC revisited Mowbray and BV in 2008-10
- Identified mineralisation at BVS in 2010/11
- Tested depth potential in 2013

Challenging Assumptions....

- Pre 2013 focus – don't go below 100m
- Post 2013 focus – test depth potential

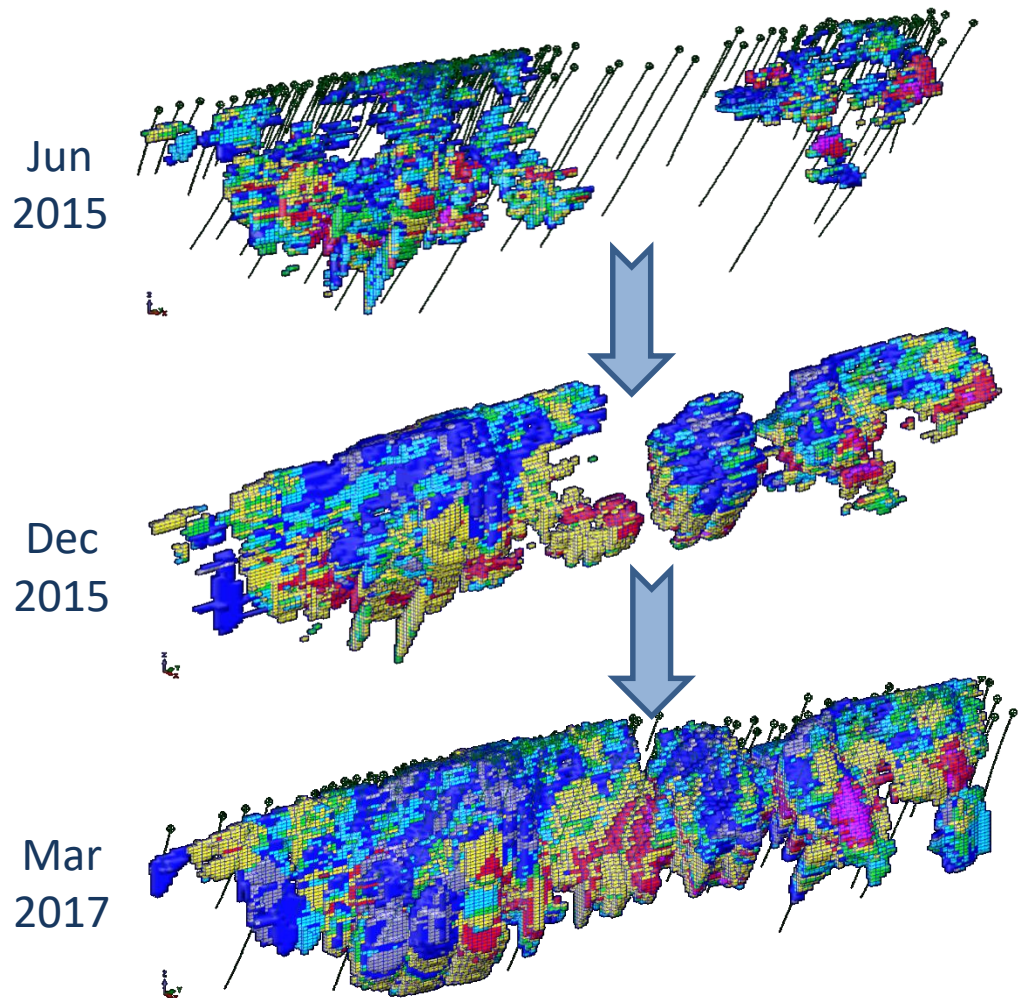




THE BVS SUCCESS STORY

SMC has delivered substantial increases in resources over the last few years:

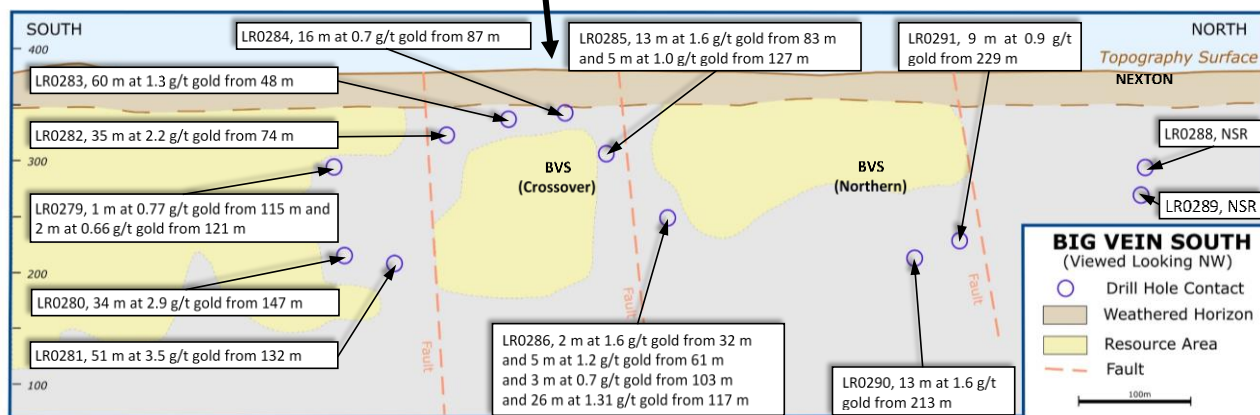
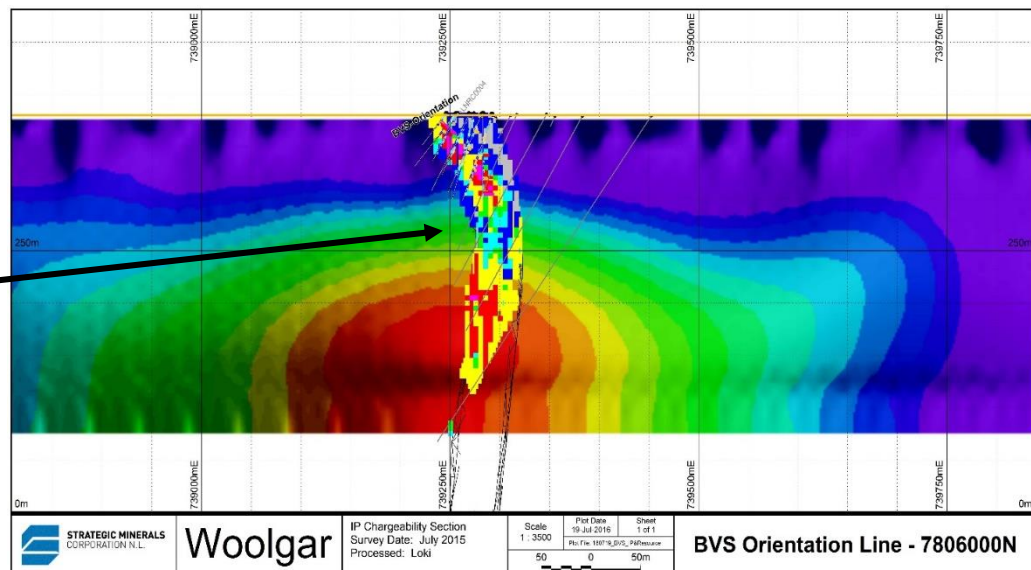
- Started with **18,000** ounces before 2014
- 9 Jun 15 – BVS JORC (mainly Inferred) resource updated to **426K**
- 8 Dec 15 – BVS JORC (mainly Inferred) resource update for **667K**
- 1 Mar 17 – BVS JORC (mainly Inferred) resource update for **1.17Moz** a 76% increase
- Focus now to shift to upgrading the resource from Inferred to Indicated
- Metallurgical Recoveries of 96%
 - ❖ No refractory ore characteristics
 - ❖ Suitable for standard CIL plan
 - ❖ Moderate consumption reagents





BALANCING EXPLORATION RISK – *Unlocking the depth potential*

- The first IP program was completed in 2015 – 10 km, 8 lines over 9 prospects
- **Outcomes:** Multiple chargeability and resistivity anomalies were identified over mesothermal, epithermal and intrusive-related targets.
 - ❖ Models delineated mineralisation at BVS
- Second IP Program was completed in 2016 – 15 km, 8 lines over Lower Camp targets
- *Time to test* – IP targets and possible extensions of BVS
- ***Still delivered substantial increase to BVS resources at the same time***

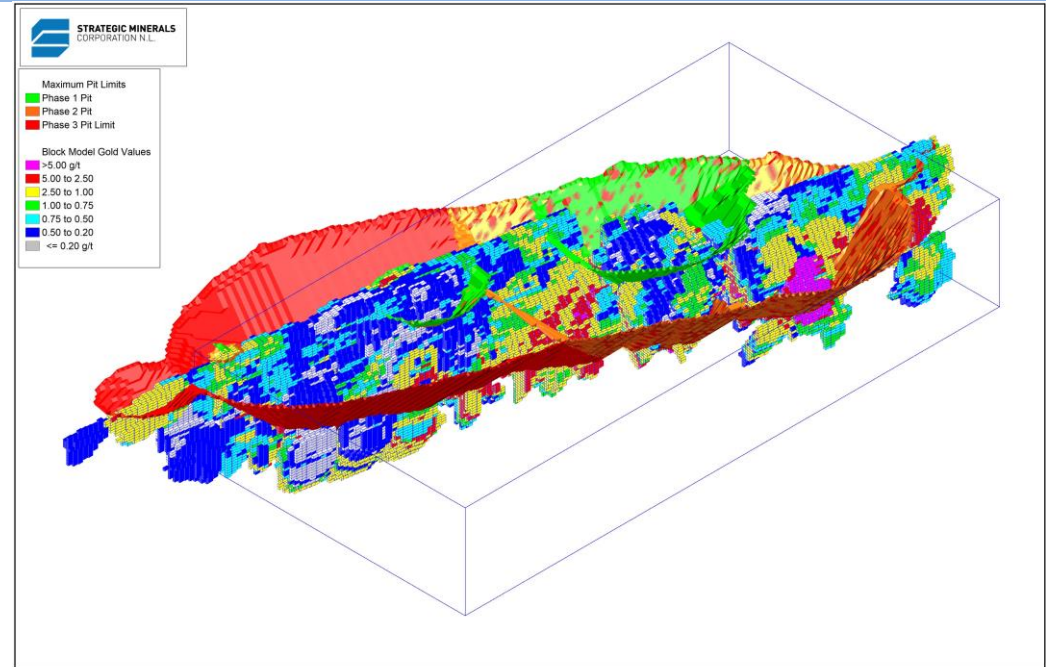


- Many targets still remain to be followed-up:
 - ❖ **Lower Camp:** Belle Brandon, Try Again, BV, Big Vein North, BV2, Mowbray, Ironclad,
 - ❖ **Middle Camp:** Belle Brandon, Brein Shear
 - ❖ **Elsewhere:** Union, Perseverance, Soapspar



ASSESSING DEVELOPMENT

- Assessing BVS as an open cut operation based on CIL/heap leach
- Undergoing necessary studies in order to ascertain key project information – modifying factors
- Completing key baseline environmental studies (i.e. Flora and Fauna)
- Additional metallurgical work required to understand heap leach/CIL optimisation



OUTCOMES FOR 2017

- Undertake RC program to convert Exploration Potential to Inferred/Inferred to Indicated
- Undertake DH program to convert Inferred to Indicated
- Undertake sterilisation assessment for BVS infrastructure
- Review Resources at Sandy Creek etc
- Evaluate and test other Prospective Targets



STRATEGIC MINERALS
CORPORATION N.L.

CONTACT US

ASX Code: **SMC**

www.stratmin.com.au

Laif McLoughlin

Executive Chairman

laif@stratmin.com.au

