



# Cobalt & Gold Explorer

2017 Noosa Mining Conference

# Company Disclaimer & Statements

## DISCLAIMER

---

This presentation has been prepared by Alloy Resources Limited ("Alloy"). The information contained in this presentation is a professional opinion only and is given in good faith. Certain information in this document has been derived from third parties and though Alloy has no reason to believe that it is not accurate, reliable or complete, it has not been independently audited or verified by Alloy.

Any forward-looking statements included in this document involve subjective judgement and analysis and are subject to uncertainties, risks and contingencies, many of which are outside the control of, and maybe unknown to Alloy. In particular, they speak only as of the date of this document, they assume the success of Alloy's strategies, and they are subject to significant regulatory, business, competitive and economic uncertainties and risks. Actual future events may vary materially from the forward looking statements and the assumptions on which the forward looking statements are based. Recipients of this document ("Recipients") are cautioned to not place undue reliance on such forward-looking statements.

Alloy makes no representation or warranty as to the accuracy, reliability or completeness of information in this document and does not take responsibility for updating any information or correcting any error or omission which may become apparent after this document has been issued.

To the extent permitted by law, Alloy and its officers, employees, related bodies corporate and agents ("Agents") disclaim all liability, direct, indirect or consequential (and whether or not arising out of the negligence, default or lack of care of Alloy and/or any of its Agents) for any loss or damage suffered by a Recipient or other persons arising out of, or in connection with, any use or reliance on this presentation or information.

## EXPLORATION RESULTS

---

Information in this report which relates to Exploration Results is based on information compiled by Andrew Viner, a Director of Alloy Resources Limited and a Member of the Australasian Institute of Mining and Metallurgy.

Mr Viner has sufficient experience which is relevant to the style of mineralisation and type of deposit under consideration and to the activity which they are undertaking to qualify as a Competent Person as defined in the 2012 Edition of the "Australasian Code for Reporting of Exploration Results, Mineral Resources and Ore Reserves."

Mr Viner consents to the inclusion in the report of the matters based on this information in the form and context in which it appears. Mr Viner is a shareholder and option holder of Alloy Resources Limited.

The Company confirms that it is not aware of any new information or data that materially affects the information in the relevant ASX releases and the form and context of the announcement has not materially changed.

Where the Company refers to the Mineral Resources in this report (referencing the releases made to the ASX), it confirms that it is not aware of any new information or data that materially affects the information included in that announcement and all material assumptions and technical parameters underpinning the resource estimate with that announcement continue to apply and have not materially changed.

The Company confirms that the form and context in which the Competent Persons findings are presented have not been materially modified from the original market announcements.

## MINERAL RESOURCES

---

The resources in this release are based on work carried out by Dr. S. Carras FAusIMM of Carras Mining Pty Ltd.

Dr. Carras has 30 years of experience which is relevant to the style of mineralisation and type of deposit under consideration and to the activity which he is undertaking to qualify as a Competent Person as defined in the 2012 edition of the "Australian Code of Reporting of Exploration Results, Mineral Resources and Ore Reserves" and consents to the inclusion in this report of the information in the form and context in which it appears.

## ALLOY RESOURCES LIMITED

---

ABN: 20 109 361 195  
ASX: AYR

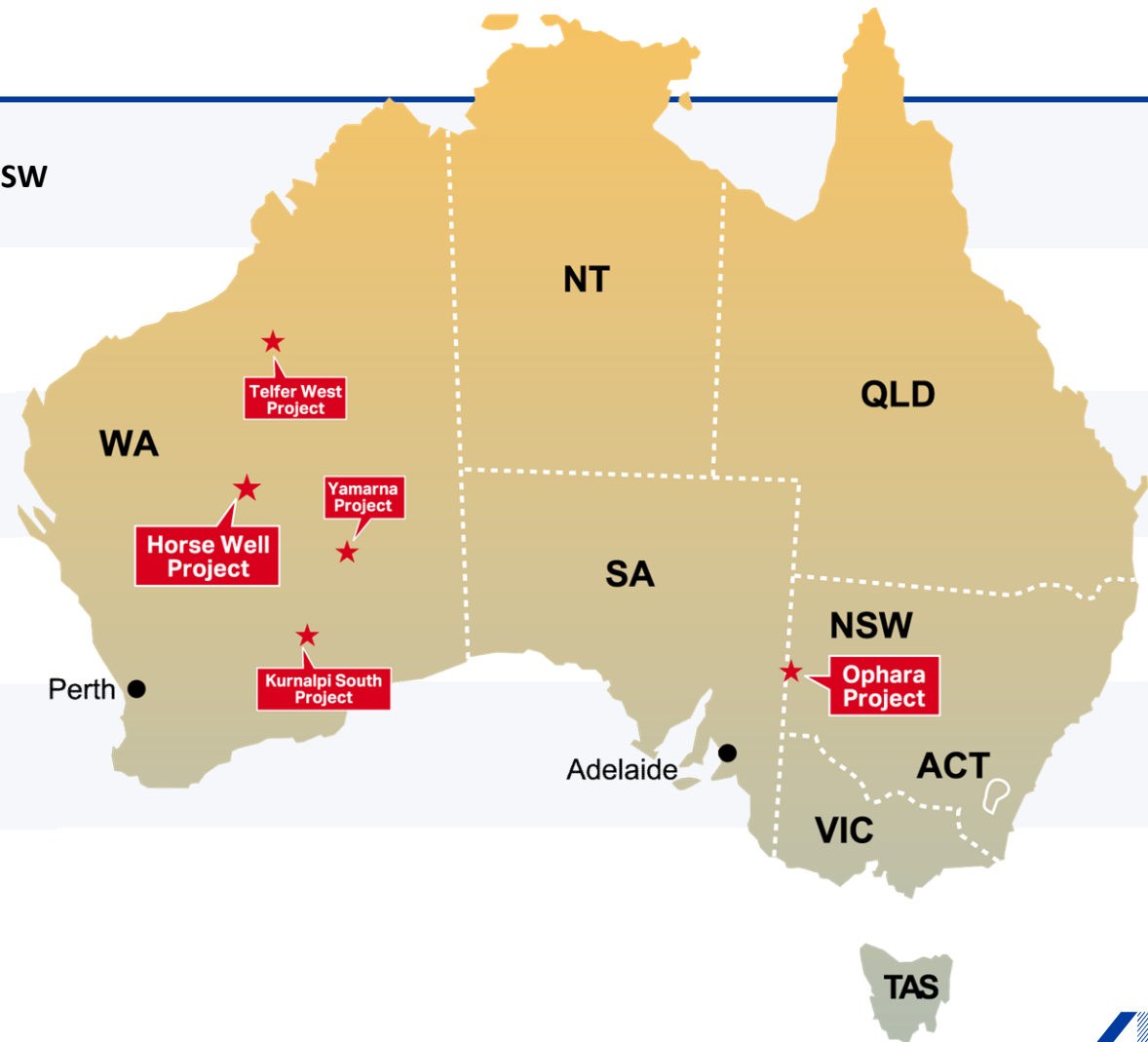
[info@alloyres.com](mailto:info@alloyres.com)  
[www.alloyres.com](http://www.alloyres.com)

**Principal Office**  
+61 (8) 9322 9903  
Level 3, 35 Havelock St  
West Perth WA 6005

**Postal & Registered Office**  
+61 (8) 9316 9100  
Suite 6, 7 The Esplanade  
Mt Pleasant WA 6153

# Exploring for Cobalt & Gold in Australia

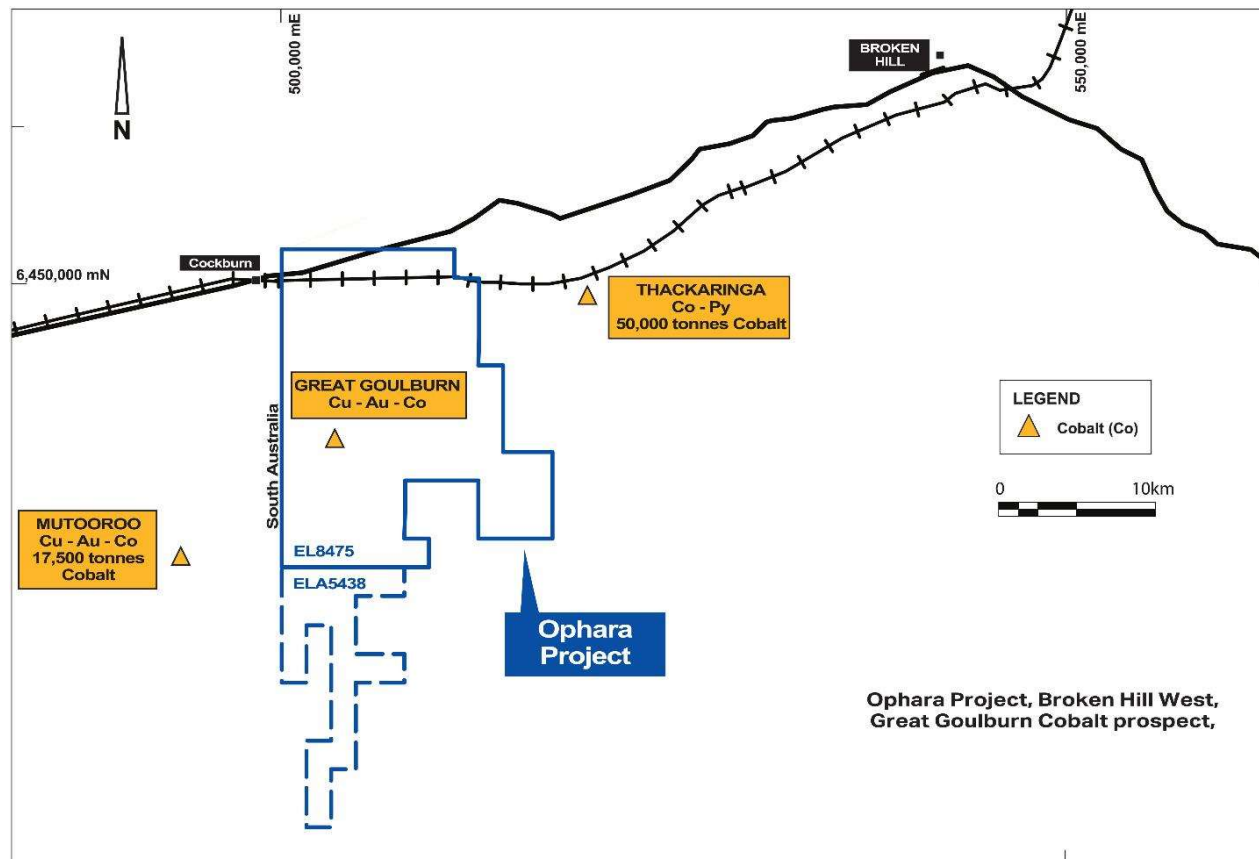
- A unique Cobalt-Gold Project in the Broken Hill region of NSW
- The 1,000 km<sup>2</sup> Horse Well Gold Joint Venture with Doray Minerals in W.A.



# The Alloy Resources Opportunity

- What Juniors look for in a project
- Why we think we have a good one
- How we think we can find the best ore deposit quickly and cheaply!

# Broken Hill - Cobalt Centre of Australia?

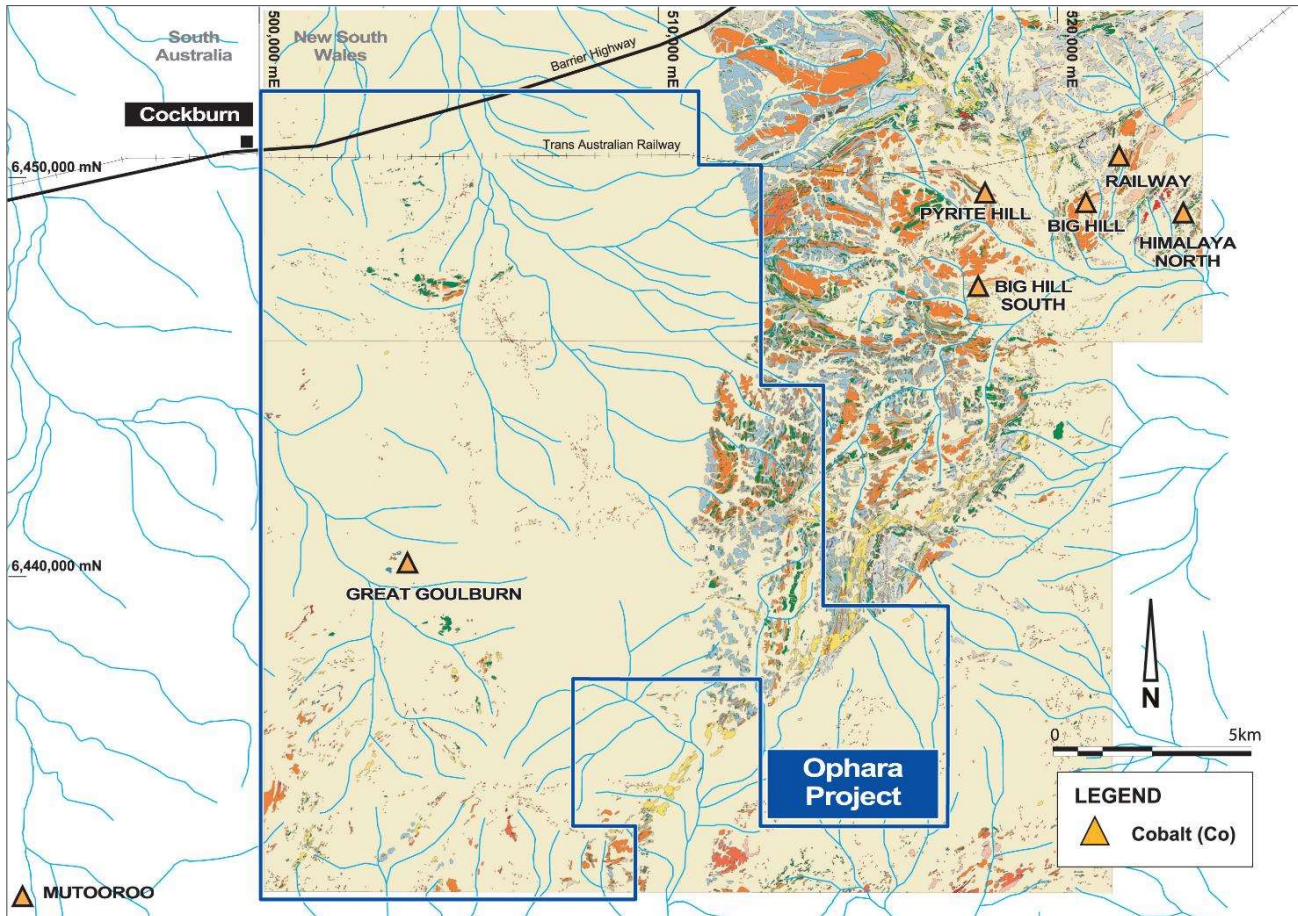


## PERFECT PROJECT FOR A JUNIOR EXPLORER

- Large Cobalt deposits in the area
- 100% owned Project right in the middle
- Big 314 square kilometre area
- **Great Goulburn** Cobalt-Gold-Copper prospect identified

## TIMING is right for Cobalt-Gold-Copper exploration

# The Ophara Cobalt-Gold Project



## JUNIORS LOOK FOR A POORLY TESTED TARGET

- Our Licence encompasses a large sand covered area with little surface geology west of the 'Thackaringa' hills – and out to the S.A border
- **Great Goulburn Co-Au-Cu prospect** found in 1870's on rare outcropping hills

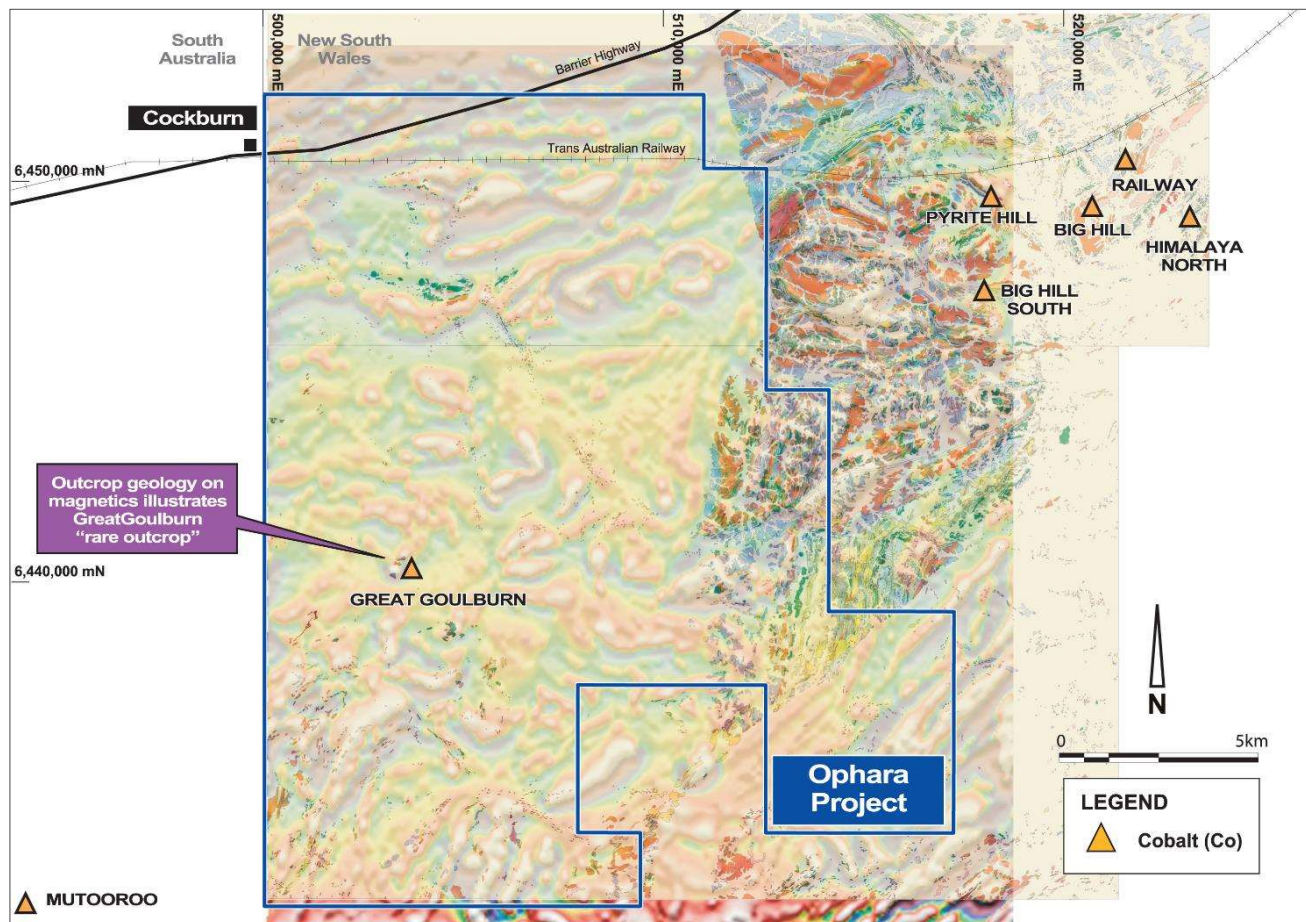
Let's put 2 and 2 together and think;

"Well what else could be there?"

- Could we have another Mutooroo or a Thackaringa Cobalt deposit?



# The Ophara Cobalt-Gold Project



## Is the geology Right ?

- Magnetics map under the cover
- The same geology persists from the outcropping areas to the East

## SAME ROCKS

## SAME MINERALISATION

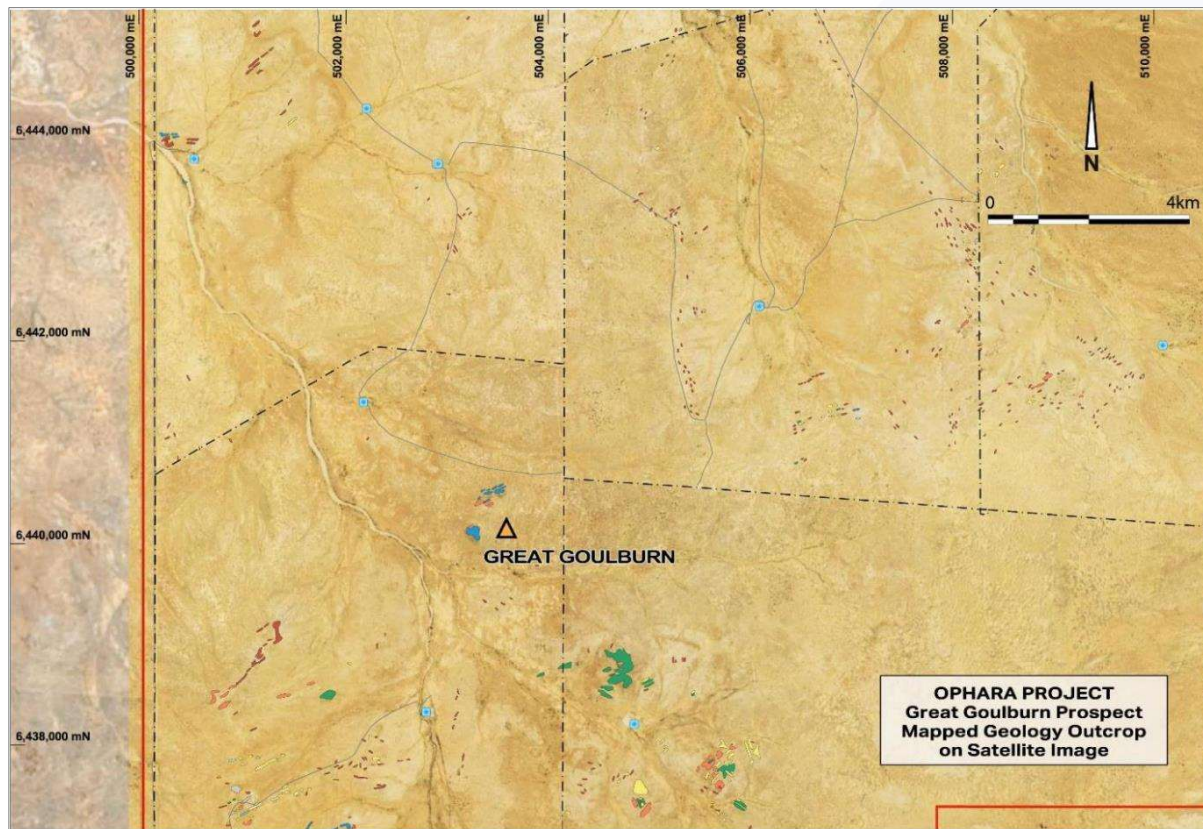
## UNDEREXPLORED

.....Perfect for a Junior



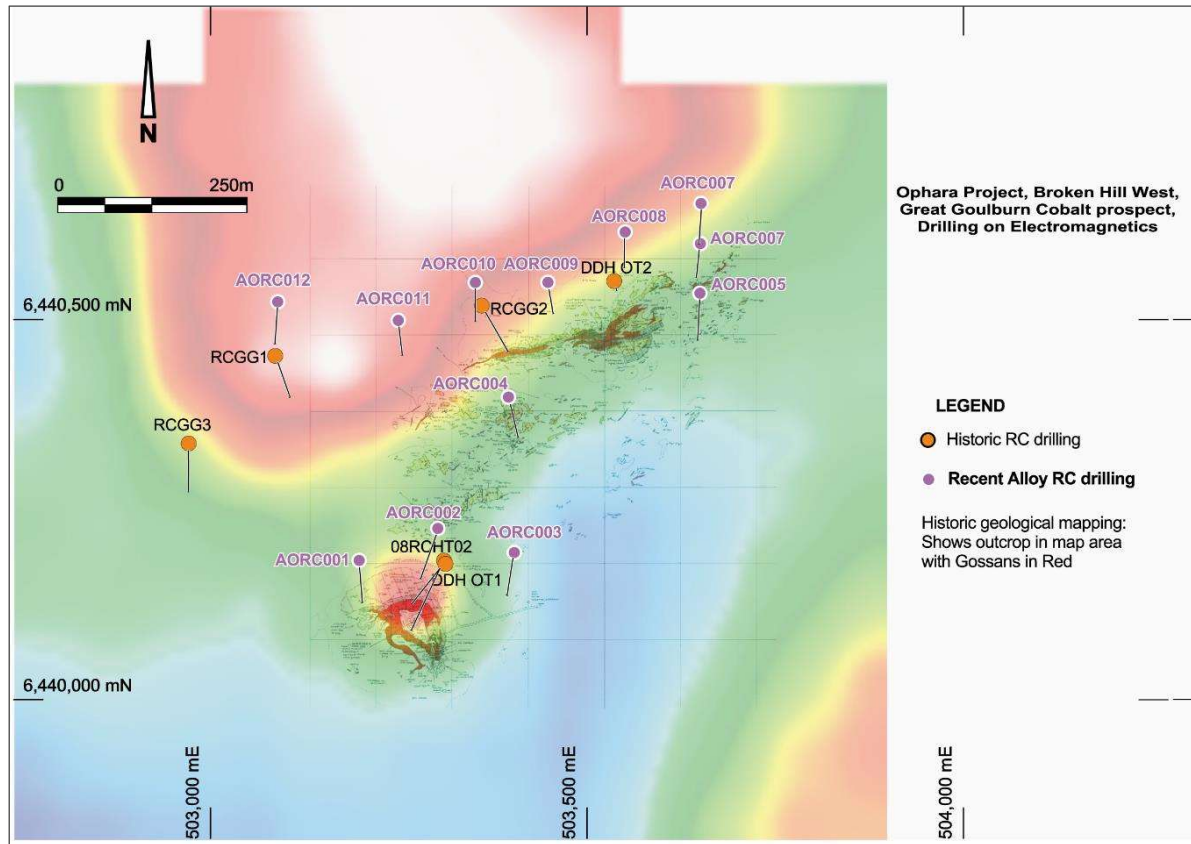
# The Great Goulburn Cobalt-Gold Prospect

Isolated iron-rich hills on a sand covered plain on a sheep station





# The Great Goulburn Cobalt-Gold Prospect



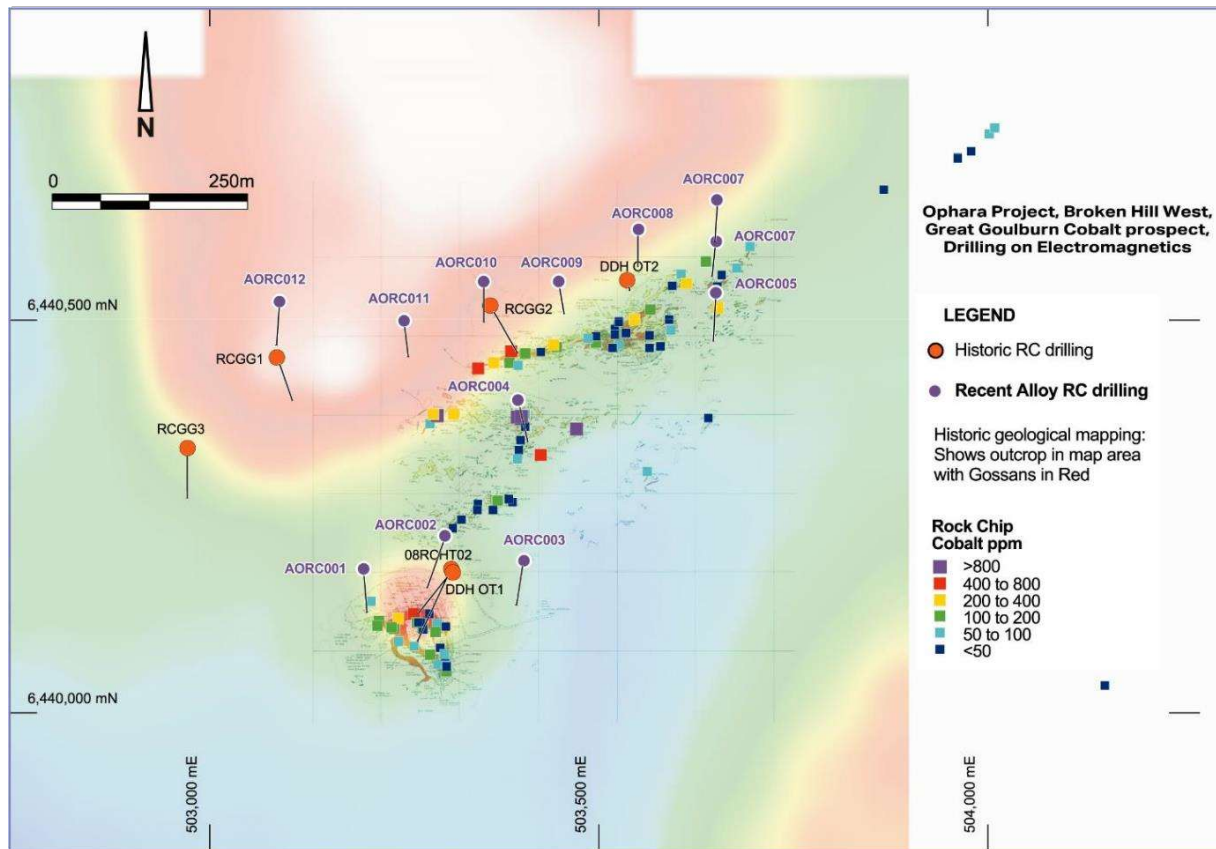
## Surface Outcrop

- Two hills with 'Iron' gossans

## Ground Electro-Magnetic Survey

- 'this measures the electrical conductivity of the rocks – sulphide rocks usually good conductors'
- Nice conductors coincide with 'gossans'
- *Something down on the south-east of EM survey*

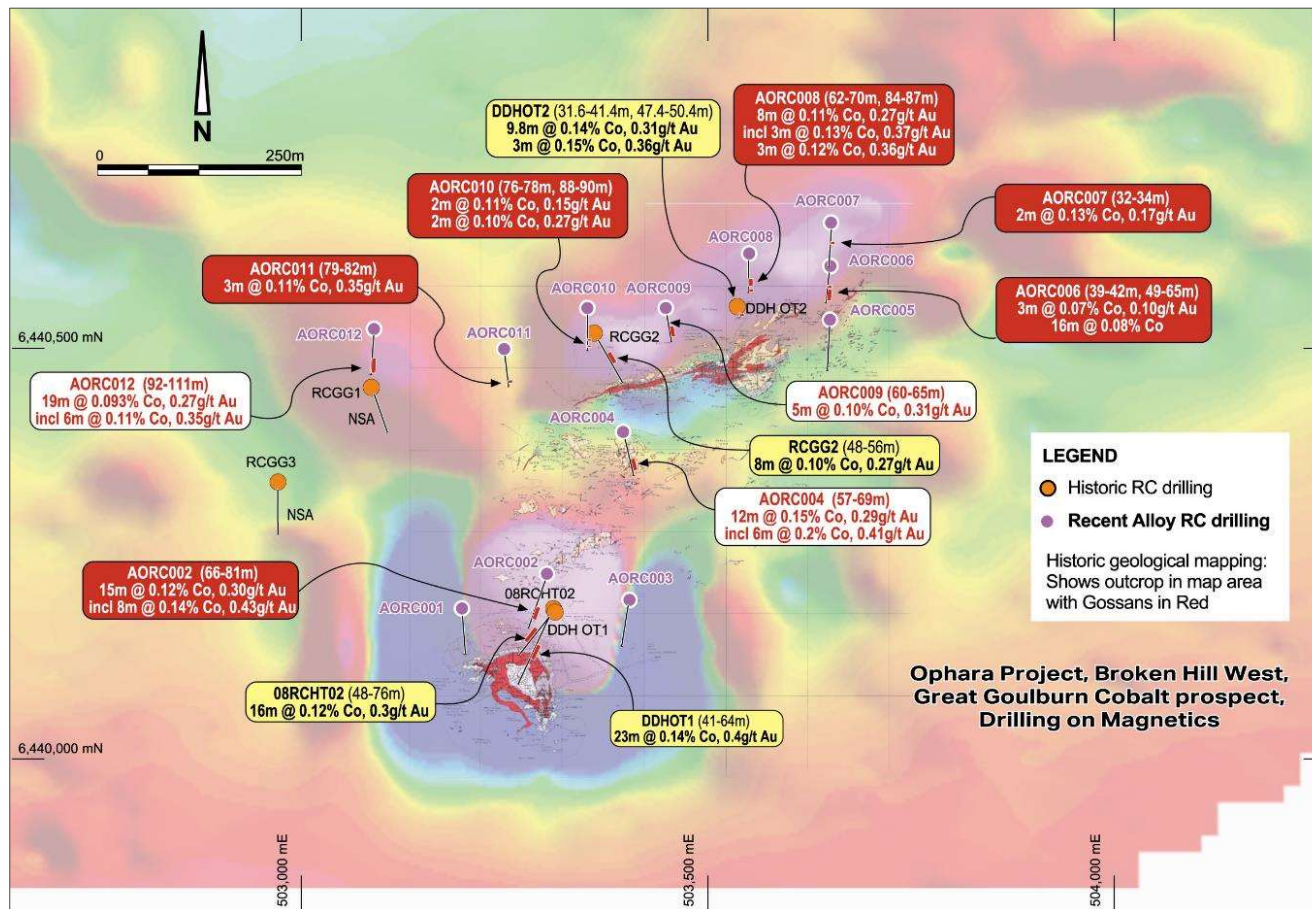
# The Great Goulburn Cobalt-Gold Prospect



## Rock Chip Sampling

- Mineralisation shows common pathfinder elements:  
Cobalt, Copper, Gold, Molybdenum and Iron
- Cobalt not very strong in rock chips
- Copper is the best pathfinder**

# The Great Goulburn Cobalt-Gold Prospect



## RC Drilling on Ground Magnetics

- **12 new holes completed**
- (Refer to ASX releases: 22/2/2017 and 03/03/2017)
- New mineralised zones discovered
- The system is open

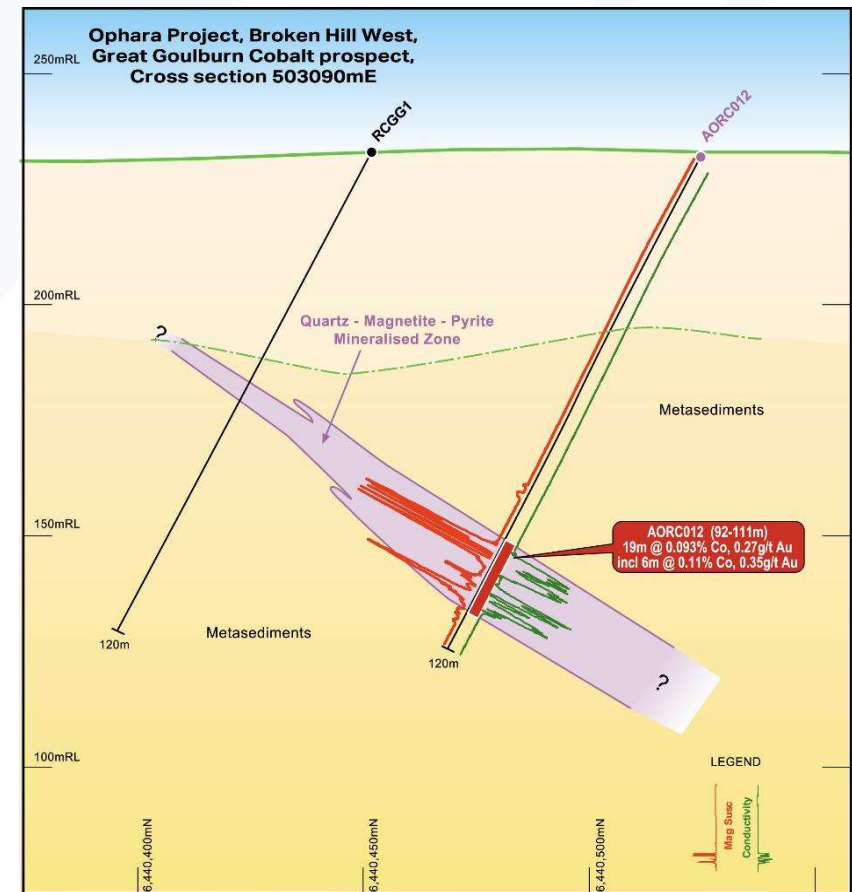
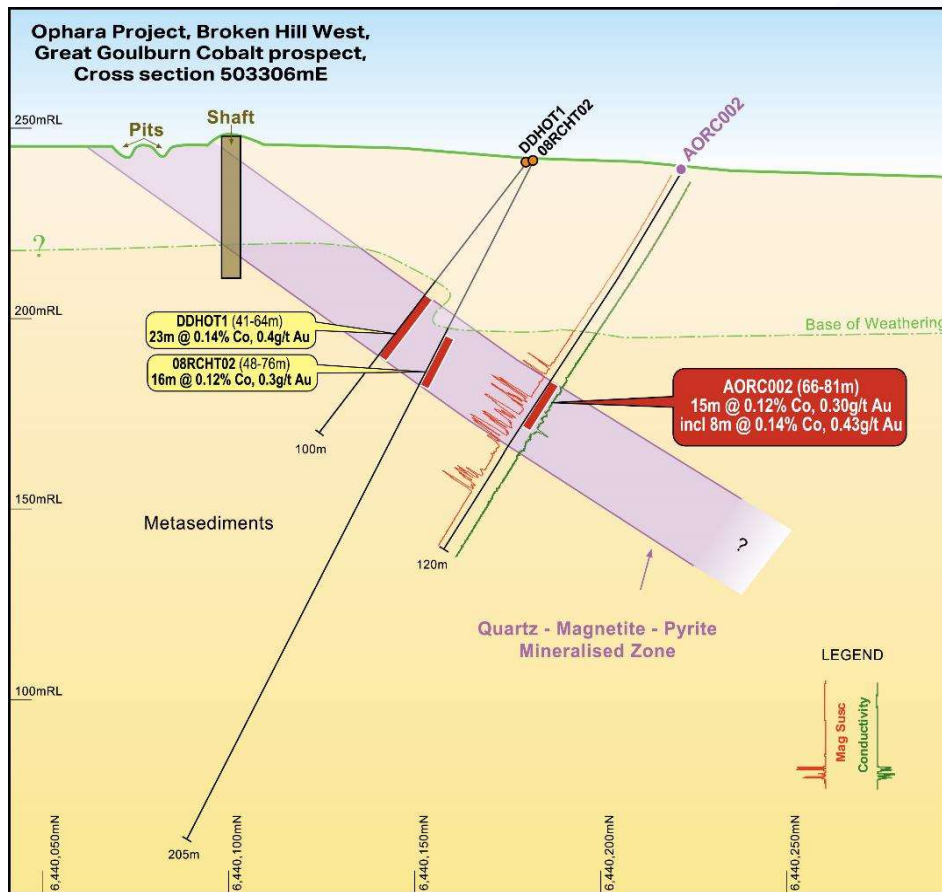




# The Great Goulburn Cobalt-Gold Prospect

## RC Drill Cross-Sections

(Refer to ASX releases: 22/2/2017 and 03/03/2017)

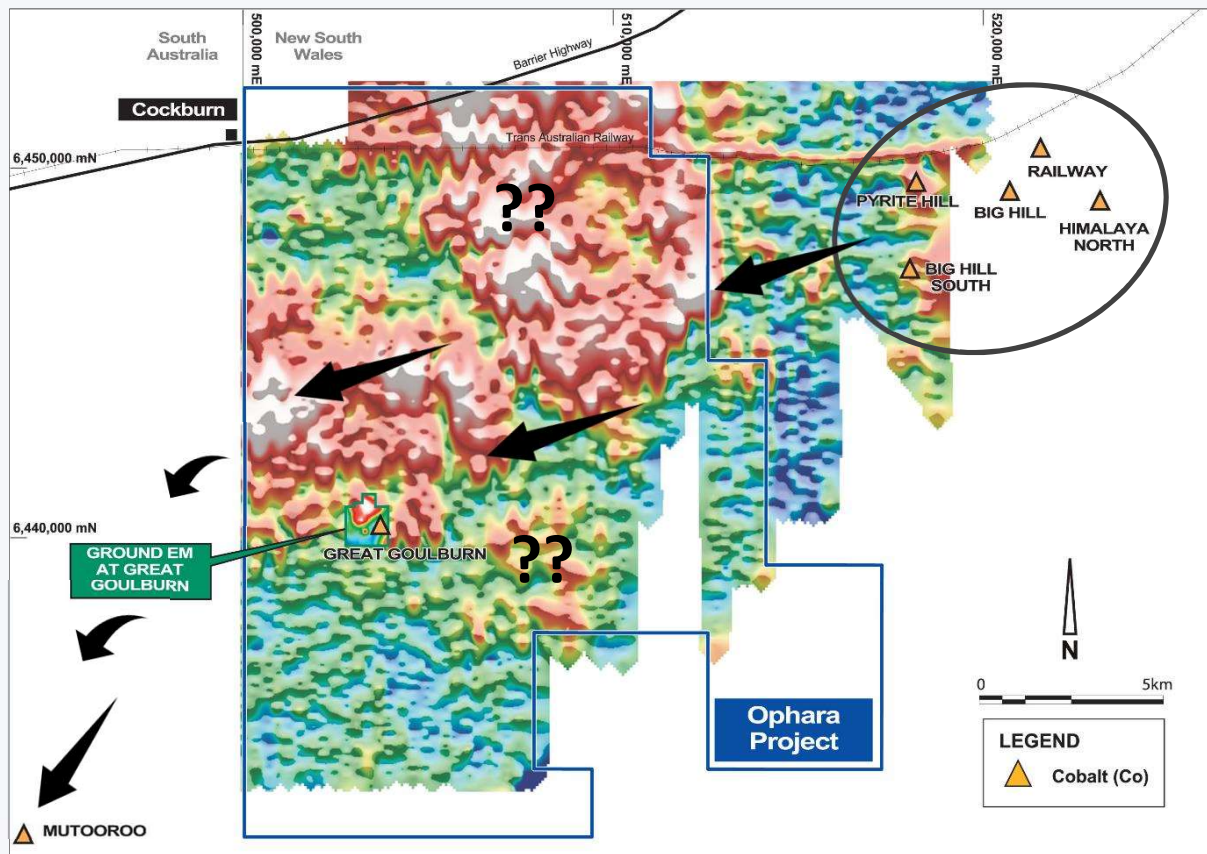




# Where to from here?

- **We have secured a highly prospective project area**
- **We have all the signs of Cobalt and Gold mineralisation at Great Goulburn**
- **How can we find the best ore deposit quickly and cheaply!**

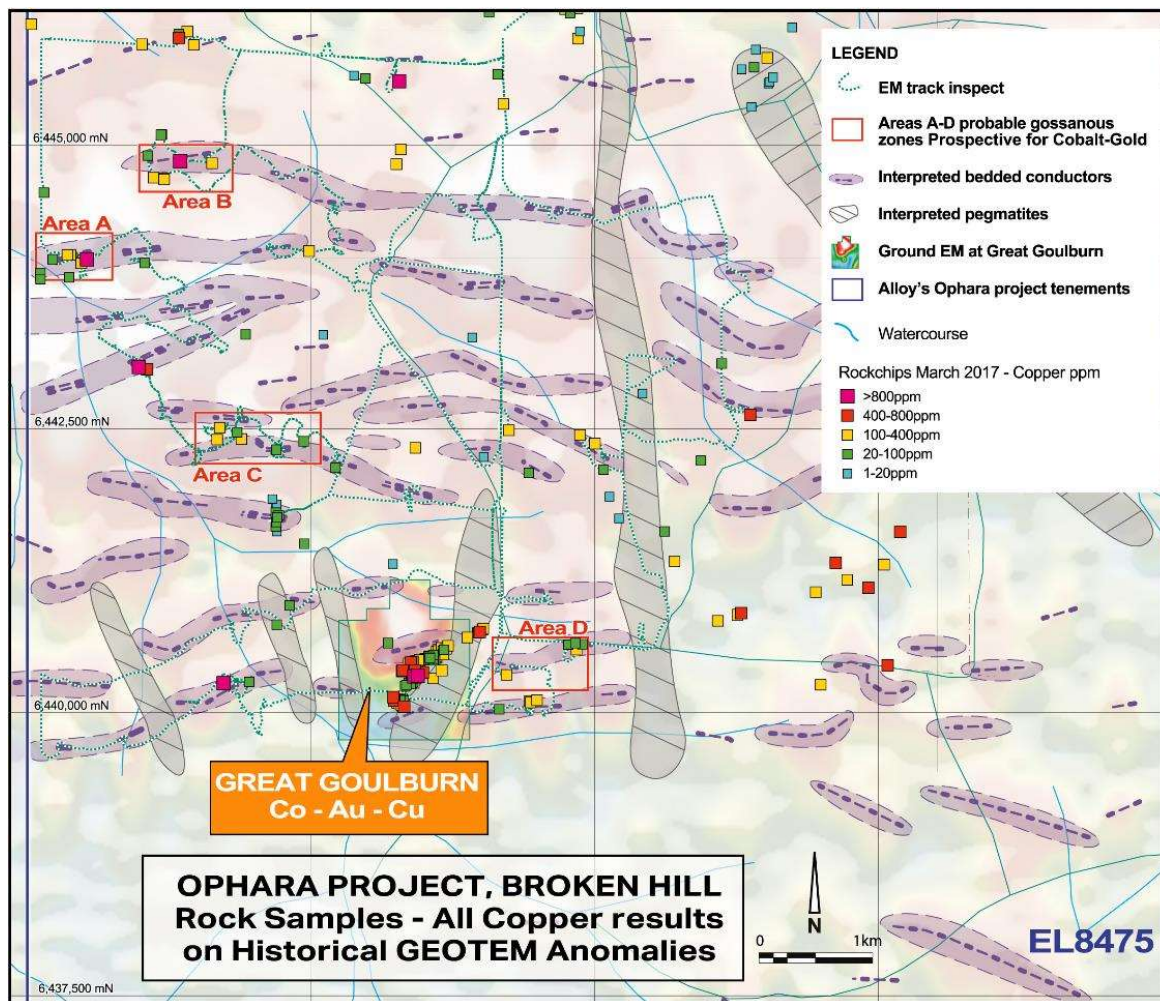
# Evidence for hidden Mineralisation



**Aerial Electro-Magnetics (GEOTEM) survey flown by BHP in 1990.**

- Suggests small Great Goulburn EM anomaly is part of something much bigger
- Highlights the Thackaringa Cobalt deposits
- WOW !! – appears to show lots of similar or stronger Conductors on Alloy lease.
- **PERFECT TARGET FOR A JUNIOR EXPLORER**

# There are some Signs in the Field

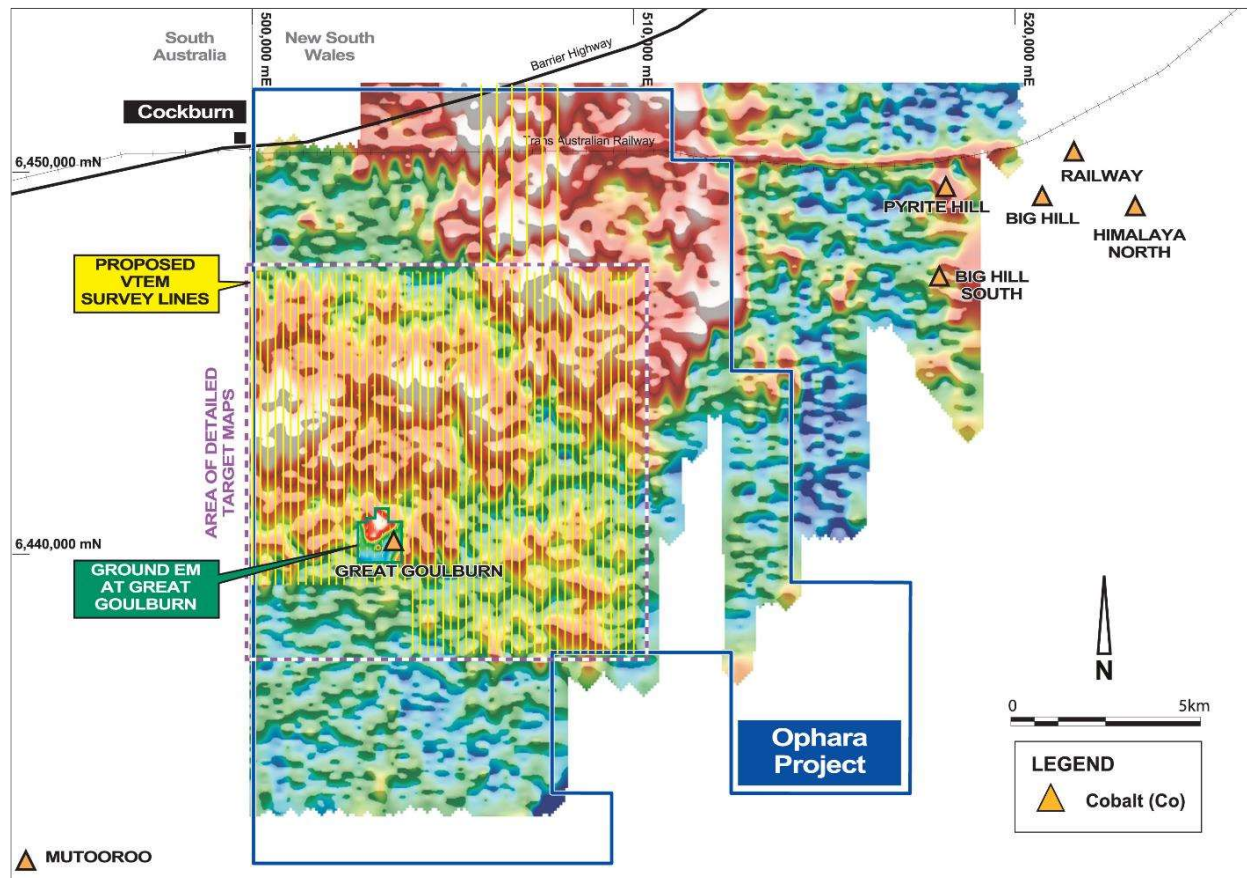


- We have been in the field looking at these GEOTEM anomalies (refer ASX release 5 April 2017)
- **Over 80% of the area had no outcrop**
- Old prospecting pits at Areas A and B
- **Strong Copper rock chips supported by cobalt and some gold and molybdenum**

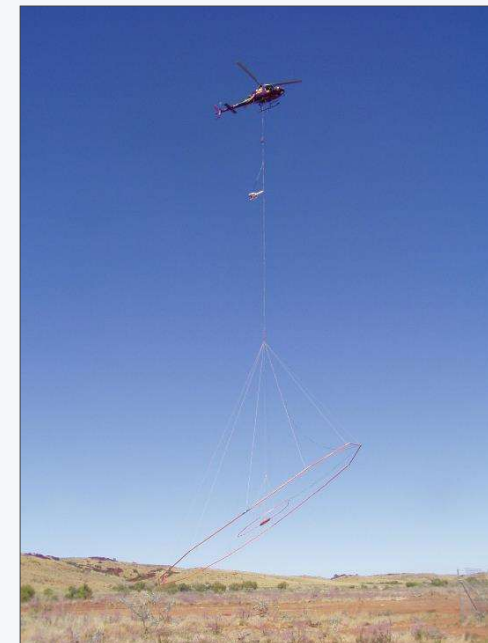




# Exploring The Ophara Cobalt-Gold Project

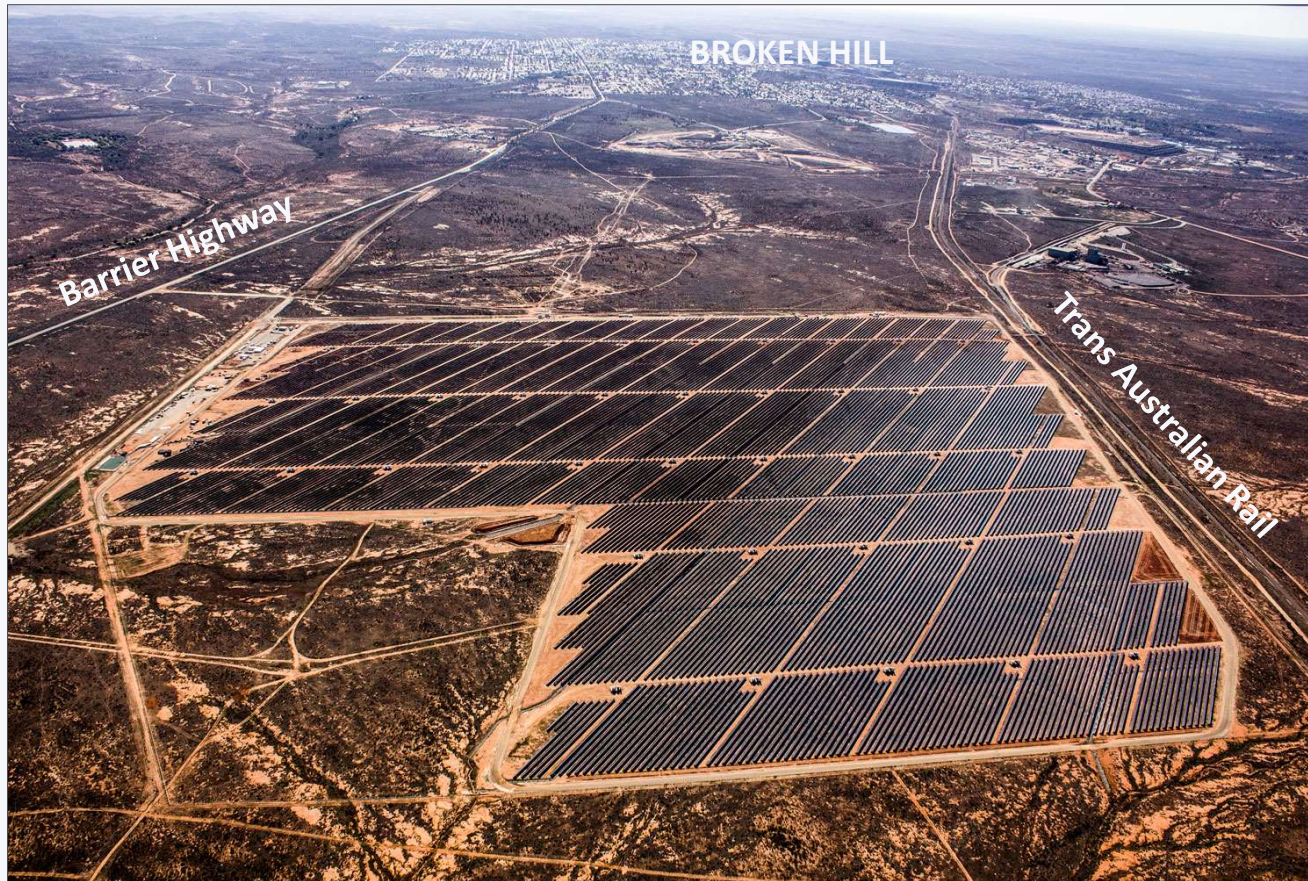


- A new aerial EM survey will be the most effective way to define the best targets at Ophara
- Alloy is committed to completing a VTEM survey covering 500 line kilometres





# Broken Hill 'gets' Renewable Energy and Mining



## Broken Hill Solar

- A 53 MW solar farm
- Renewable Energy for isolated Broken Hill township
- Local and state Government supportive of exploration for new commodities in the region.



# Stakeholder Management



## Exploration Schedule

- Sheep farmers in the area have lambing occurring in July and August which restricts all exploration activity.
- We are being patient and are hoping to be able to re-commence field activities in August and complete the aerial EM survey by early September at the latest.

# Company Overview

## Board of Directors

---

### Mr Andy Viner

Executive Chairman – Exploration Geologist

Matsa Resources / Jackson Gold / Gindalbie Metals / RSG



### Mr Kevin Hart

Non-Executive Director & Company Secretary

Gold Road Resources / Dacian Gold / Encounter Resources



### Mr Allan Kelly

Non-Executive Director – Geologist, Investor

Recent ex-MD of Doray Minerals



## Capital Structure

---

SHARES ON ISSUE

967 m

OPTIONS (1.5/1.6C UNLISTED)

29 m

MARKET CAP (@ 0.5c)

\$4.8 m

CASH (Jul 31)

\$0.75 m

## Shareholders

---

TOP 40

43 %

DIRECTORS

5%

# A Highly Leveraged Investment Opportunity

## Alloy Resources Summary

✓ **GOLD + COBALT EXPOSURE**

The places to be invested

✓ **BIG TARGETS**

From outstanding exploration results and large land holdings

✓ **STRATEGIC LOCATIONS**

Geological and Geographical proximity to Major Mineral Deposits

✓ **WELL FUNDED**

Strong support for Cobalt – Gold strategy

✓ **ACTIVITY & NEWS FLOW**

Ophara Cobalt Project exploration and Horse Well Gold JV drilling

Thank you.