



Unlocking Victoria's Copper-Gold Potential

**Noosa Mining Conference
July 2017**

Disclaimer

This presentation contains only an overview of Stavely Minerals Limited (“Stavely” or the “Company”) and its activities and operations. The contents of this presentation, including matters relating to the geology and exploration potential of the Company’s projects, may rely on various assumptions and subjective interpretations which it is not possible to detail in this presentation and which have not been subject to any independent verification.

This presentation contains a number of forward-looking statements. Known and unknown risks and uncertainties, and factors outside of the Company’s control, may cause the actual results, performance and achievements of the Company to differ materially from those expressed or implied in this presentation.

To the maximum extent permitted by law, Stavely does not warrant the accuracy, currency or completeness of the information in this presentation, nor the future performance of the Company, and will not be responsible for any loss or damage arising from the use of the information.

The information contained in this presentation is not a substitute for detailed investigation or analysis of any particular issue. Current and potential investors should seek independent advice before making any investment decision in regard to the Company or its activities.

STAVELY MINERALS

STAVELY
MINERALS

ASX Code – SVY

Share Price - \$0.14

Cash (31/03/17) - \$2.79M*

**Excludes Titeline Drilling agreement and Victorian Gov't co-funding*

Shares on Issue – 122.1M

Market Cap - \$17.1M

Management ~50% equity

Directors

Bill Plyley

Non-executive Chairman

Chris Cairns

Managing Director

Jennifer Murphy

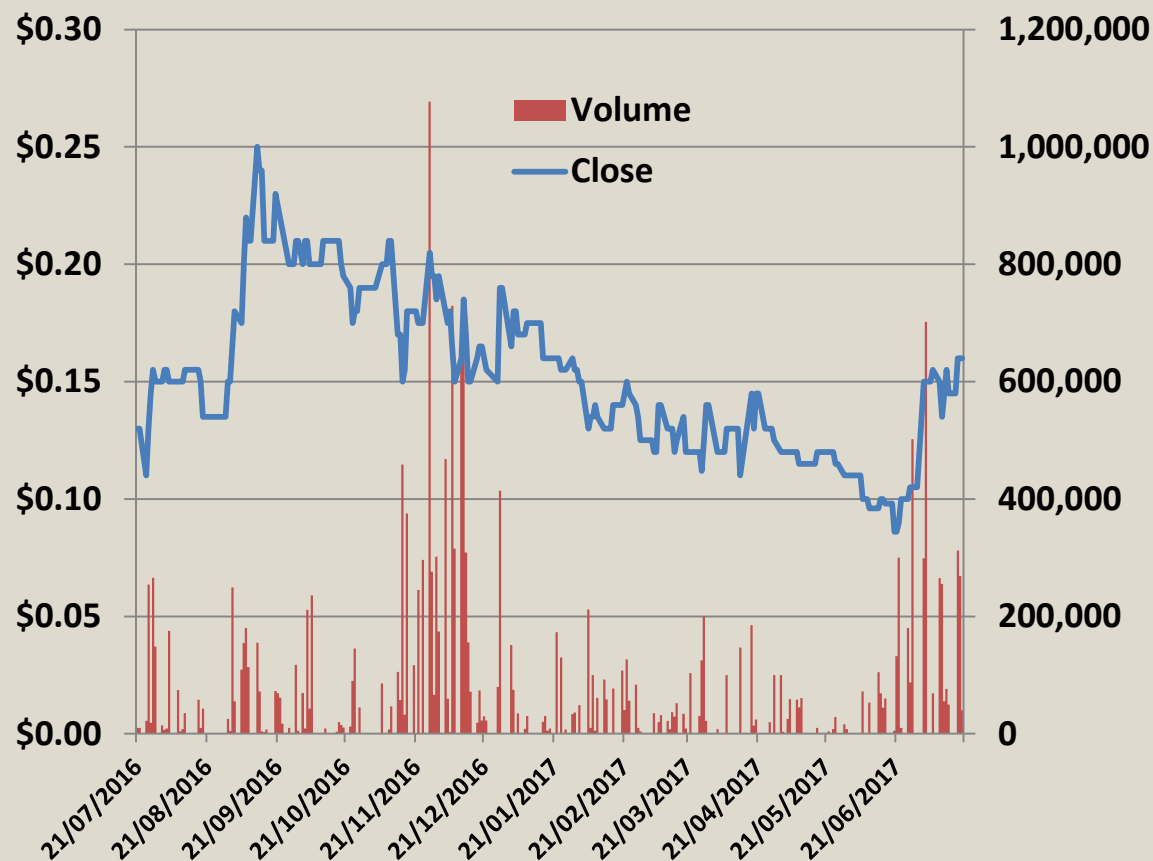
Technical Director

Peter Ironside

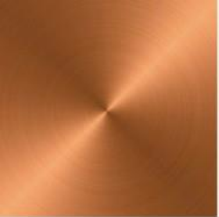
Non-executive Director

Amanda Sparks

Company Secretary

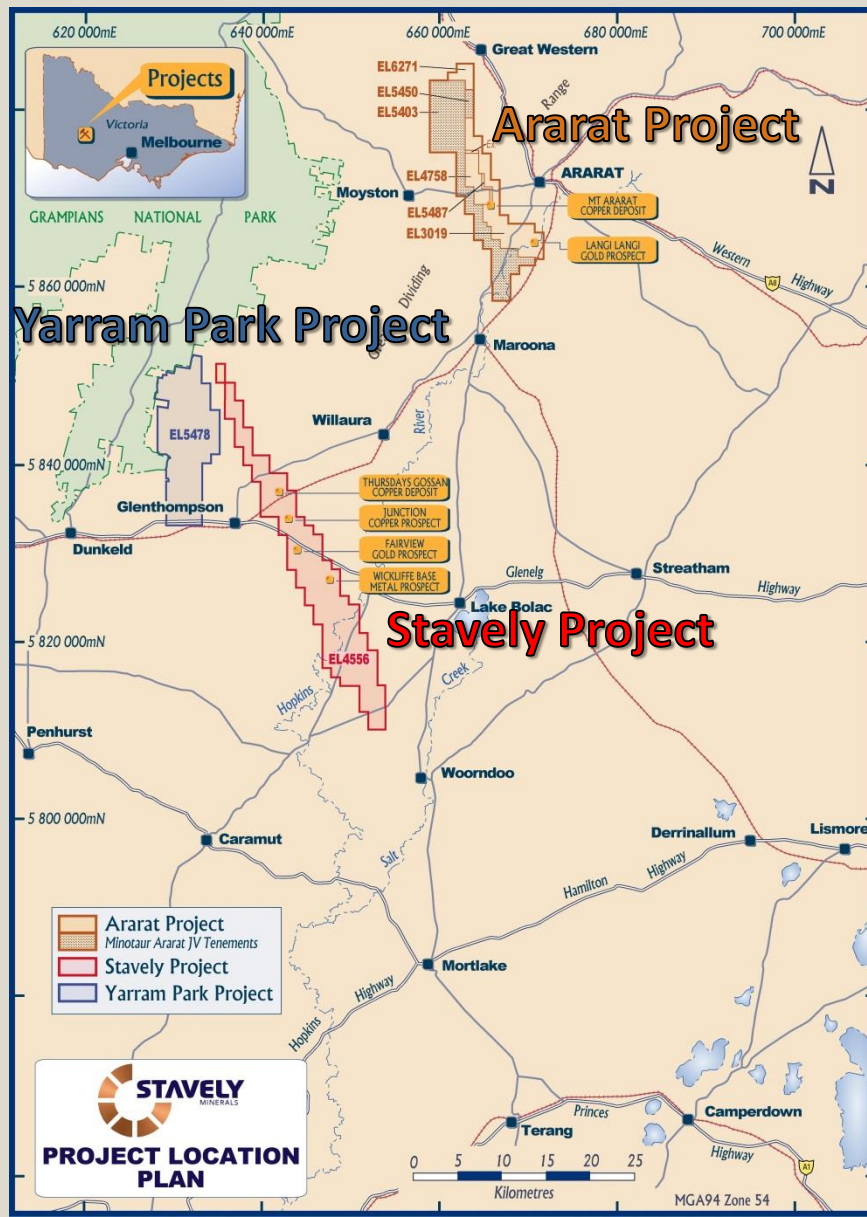


**\$2m share subscription agreement with Titeline Drilling Pty Ltd announced to the ASX on 7 October 2014*



PROJECTS

VICTORIAN PROJECT LOCATIONS



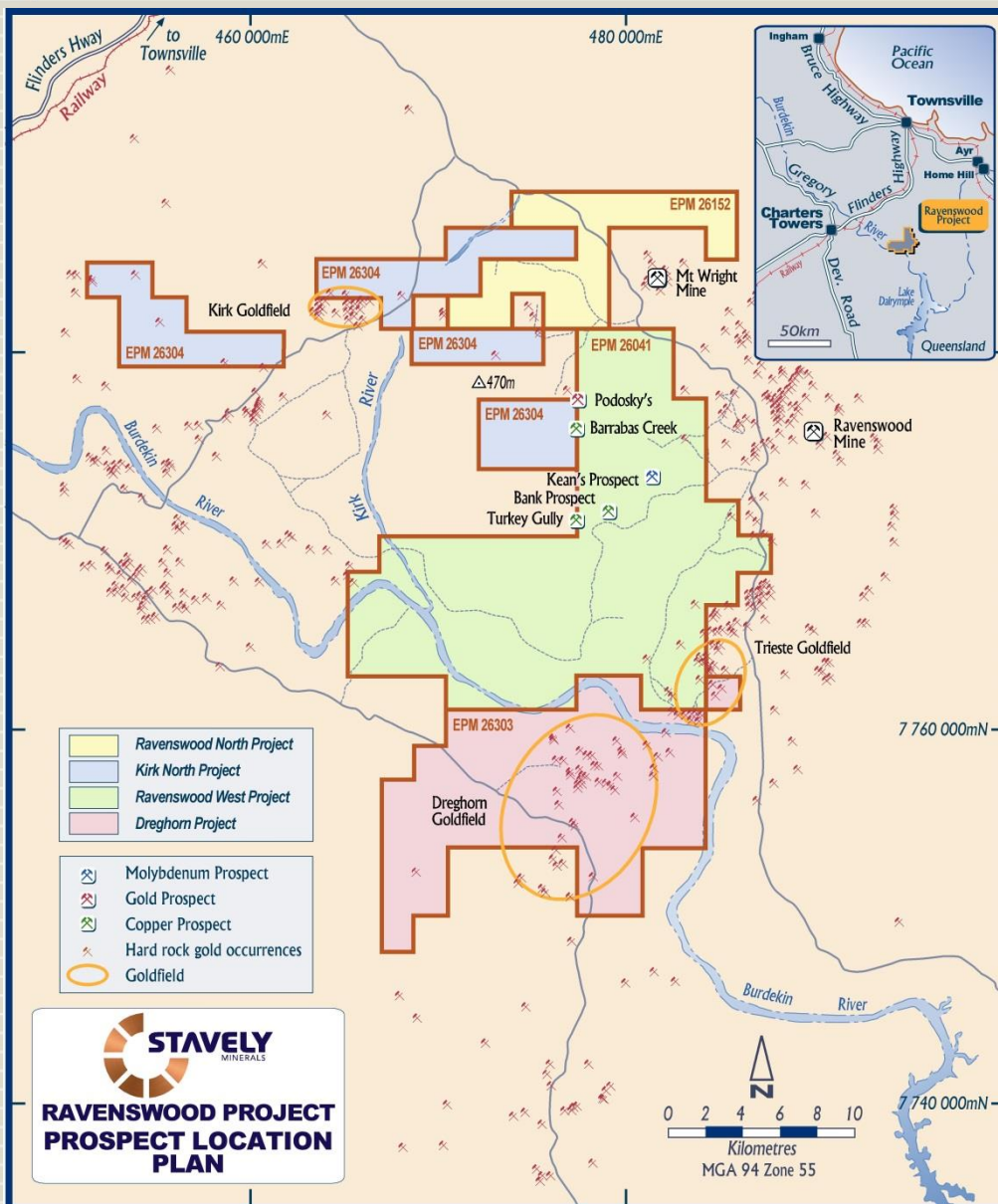
Victorian Projects

The Ararat Project is prospective for VMS base metals-gold and 'Stawell-style' gold mineralisation.

The Stavelly Project is prospective for ancient porphyry copper-gold, VMS base metals-gold and intrusive related gold mineralisation.

The Yarram Park Project is prospective for ancient porphyry copper-gold and intrusive related gold mineralisation.

QUEENSLAND PROJECT LOCATION



The Ravenswood Project is prospective for:

- porphyry copper-moly-gold,
- quartz-sulphide vein-hosted gold
- breccia-hosted gold mineralisation
- epithermal gold
- VMS copper-gold

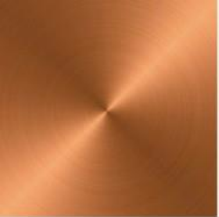
At the **Ararat Project**, hosted in a Besshi-style VMS:

- Inferred Mineral Resources of 1.3Mt at 2.0% copper, 0.5 g/t gold, 0.4% zinc and 6 g/t silver for 30kt of contained copper

At the **Stavely Project** hosted in a secondary chalcocite-enriched blanket:

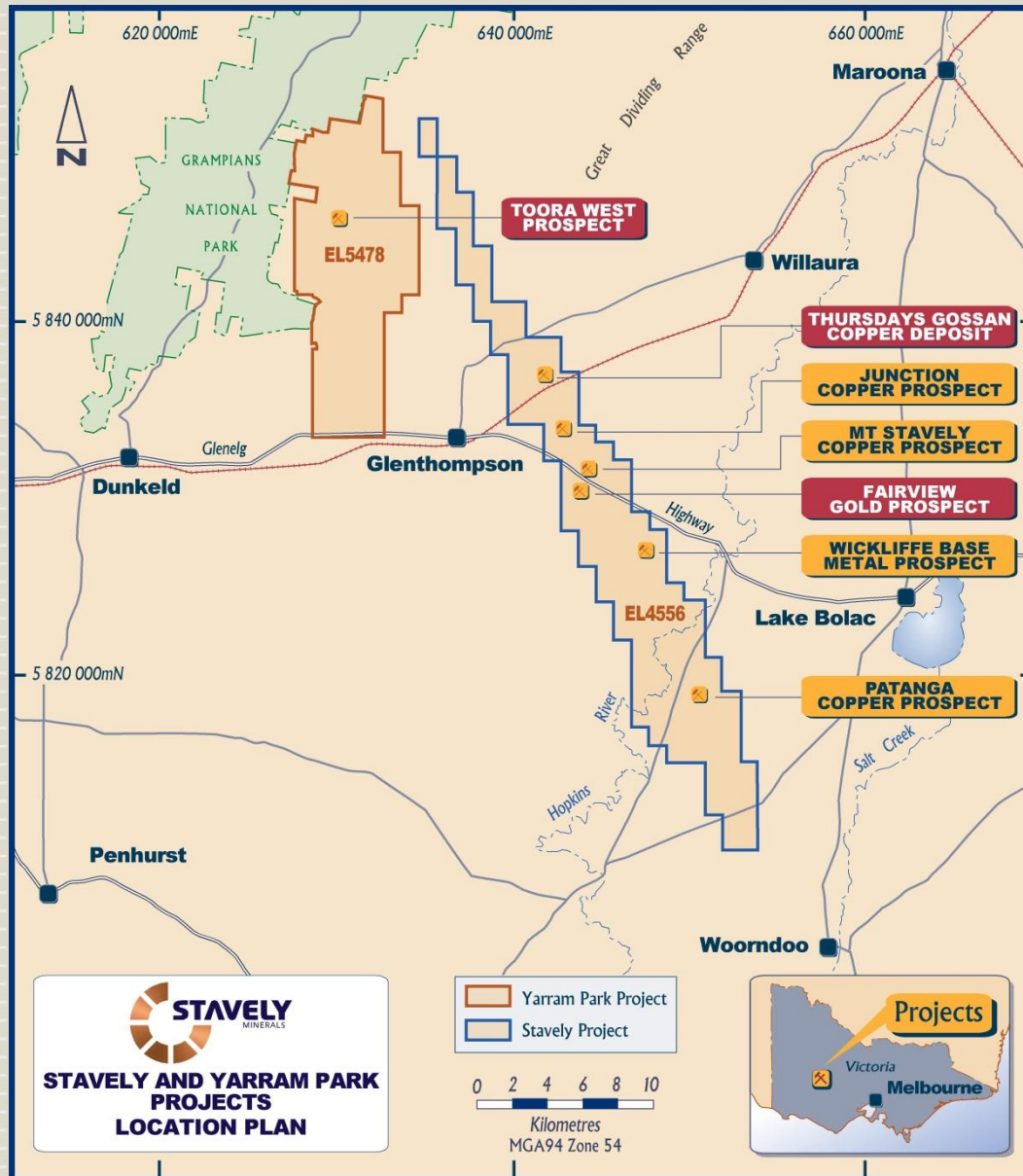
- Inferred Mineral Resources of 28Mt at 0.4% copper for 110kt of contained copper
- Note: gold and silver present but not included in the Mineral Resource estimate

¹ reported in compliance with JORC 2012, see ASX announcement 8 September 2015 and available from www.stavely.com.au

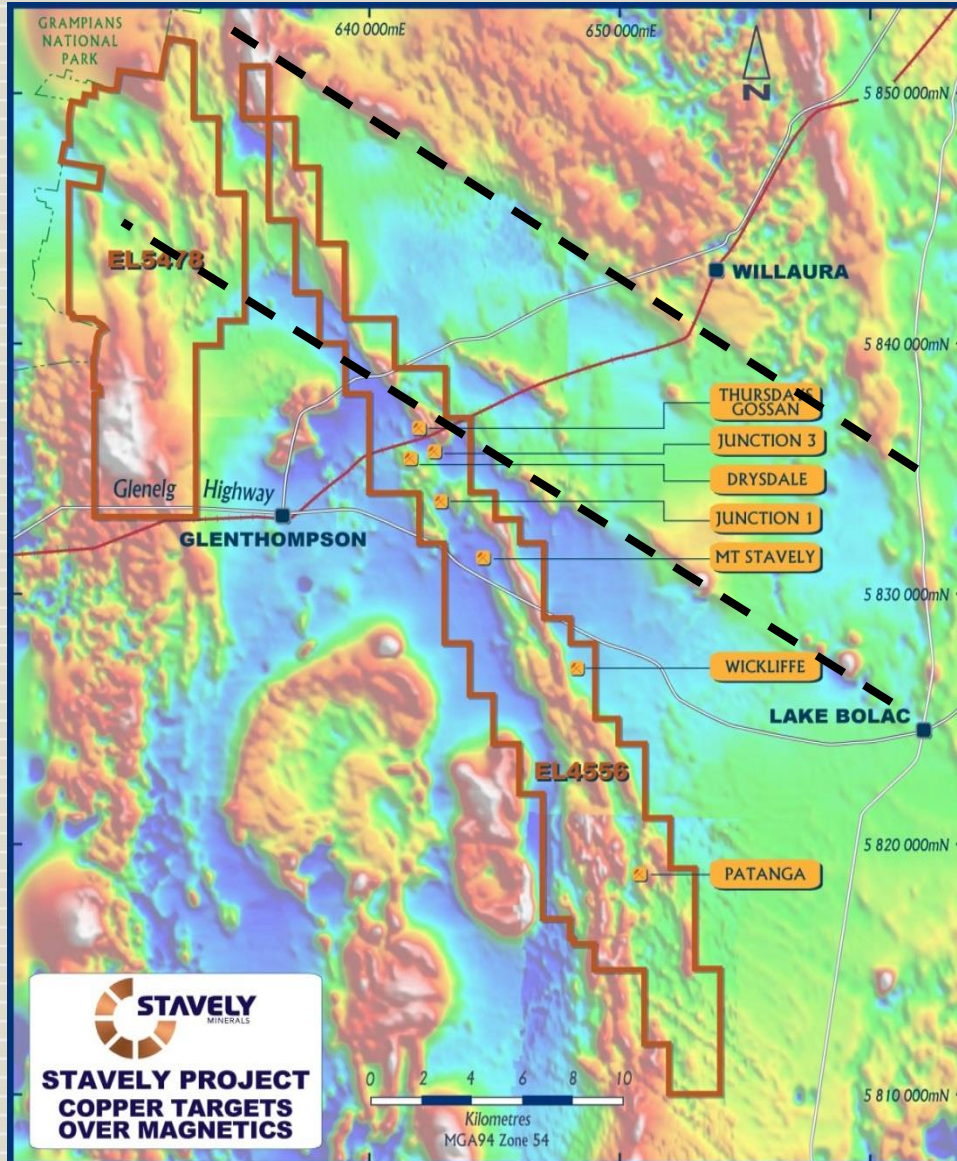


STAVELY PROJECT

STAVELY PROJECT



- Thursday's Gossan chalcocite enriched blanket – Inferred Mineral Resource of **28Mt at 0.4% copper** containing 110kt copper
- Thursday's Gossan porphyry
- Junction porphyry
- Mount Stavely porphyry
- Fairview gold prospect
- Wickliffe VMS prospect
- Patanga copper prospect
- Toora West porphyry prospect

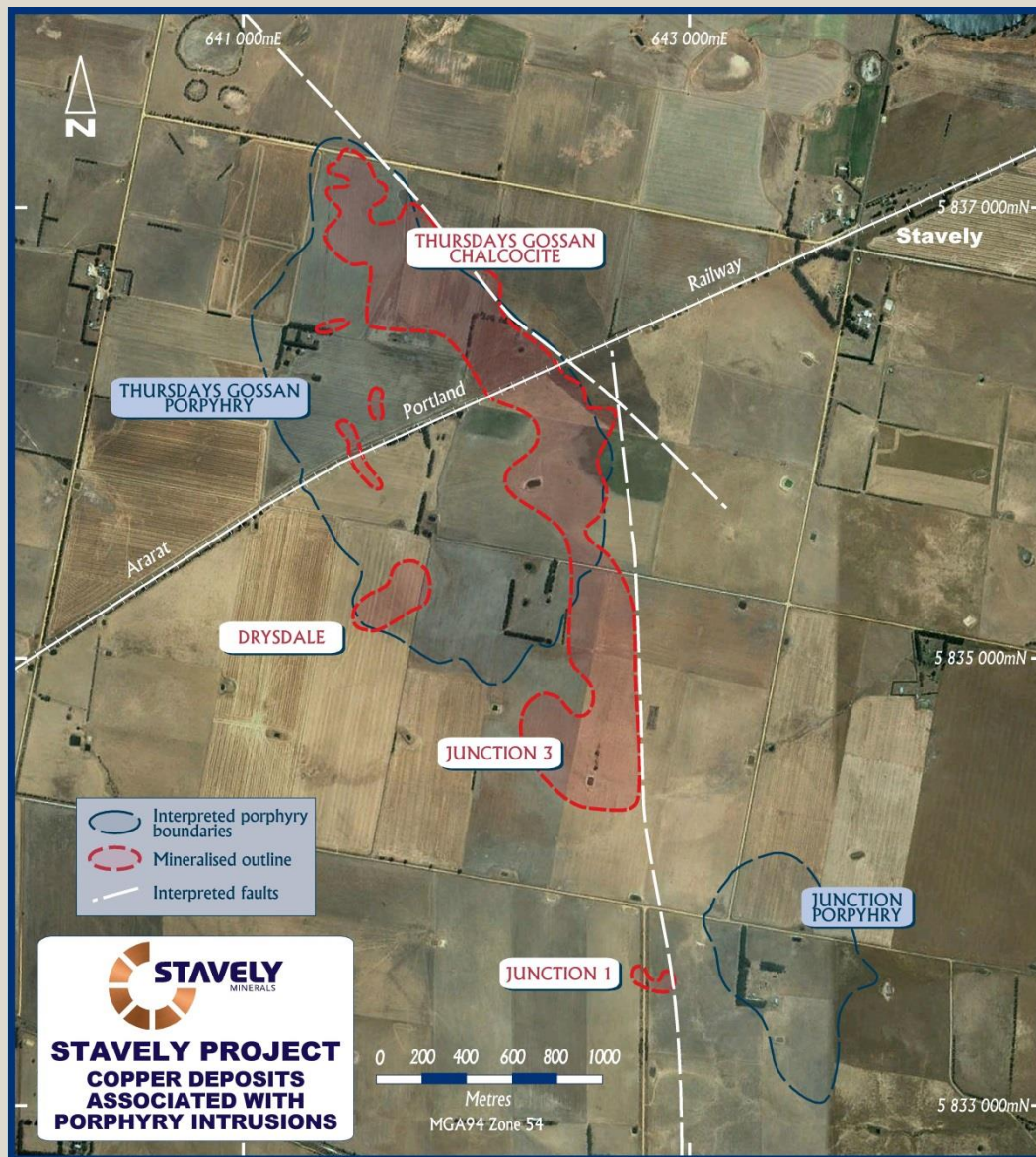


Stavely Volcanic Arc

Similar structural setting to Cadia Valley

- ~N-S trending volcanic belt
- Major NW trending structures

STAVELY PROJECT



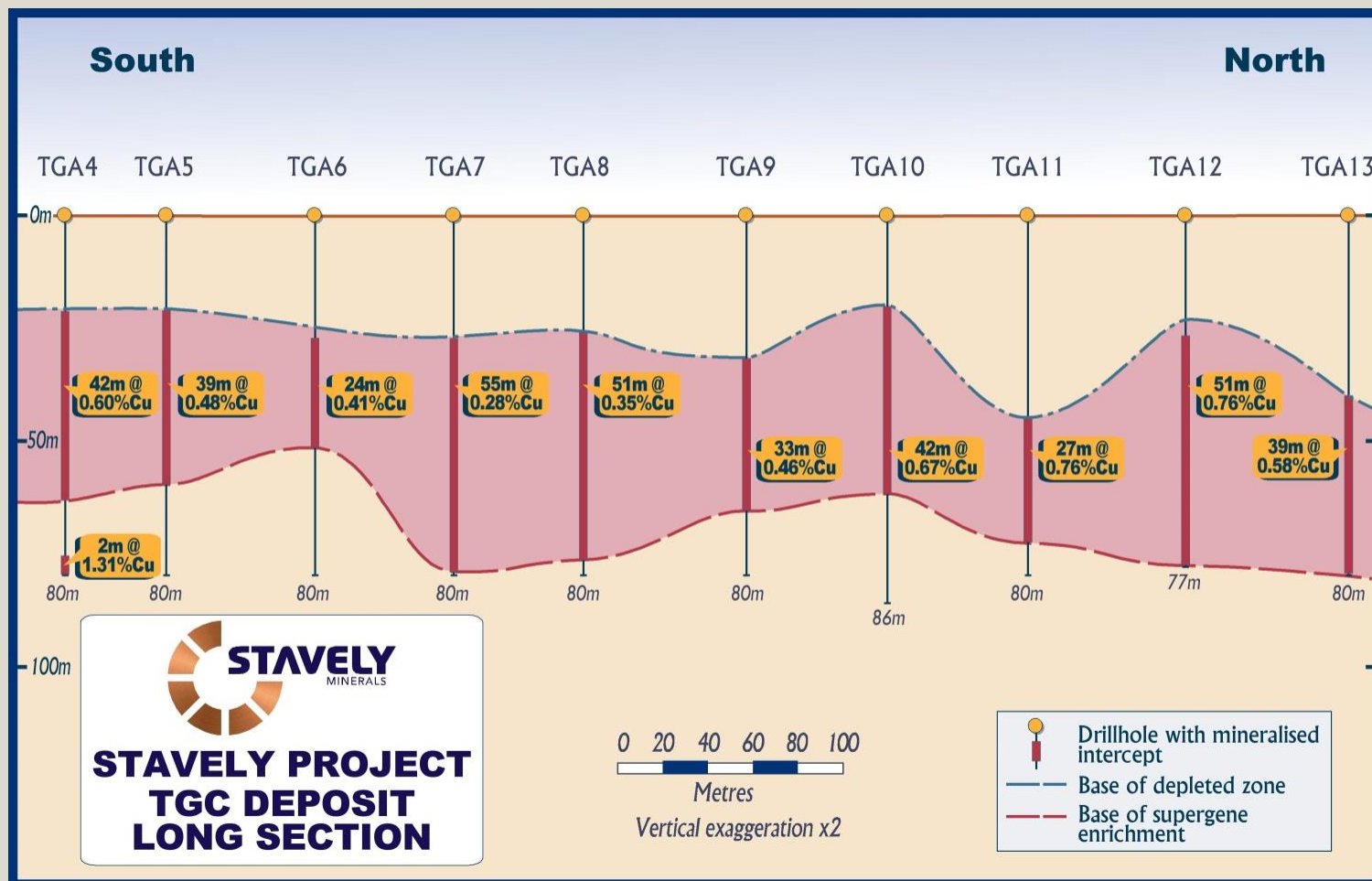
Thursday's Gossan

Inferred Mineral Resources of **28Mt** at **0.4% copper** for 110kt of contained copper

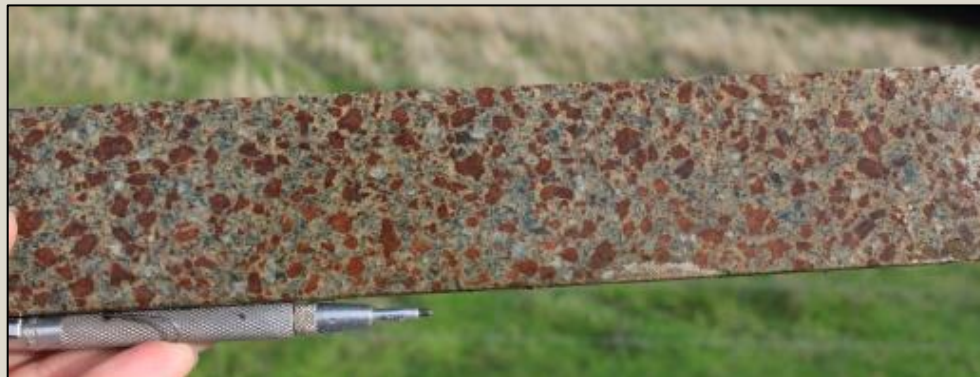
STAVELY PROJECT

STAVELY
MINERALS

Copper only resources estimate – gold and silver not included!



¹ see ASX announcement 19 July 2016 and available from www.stavely.com.au

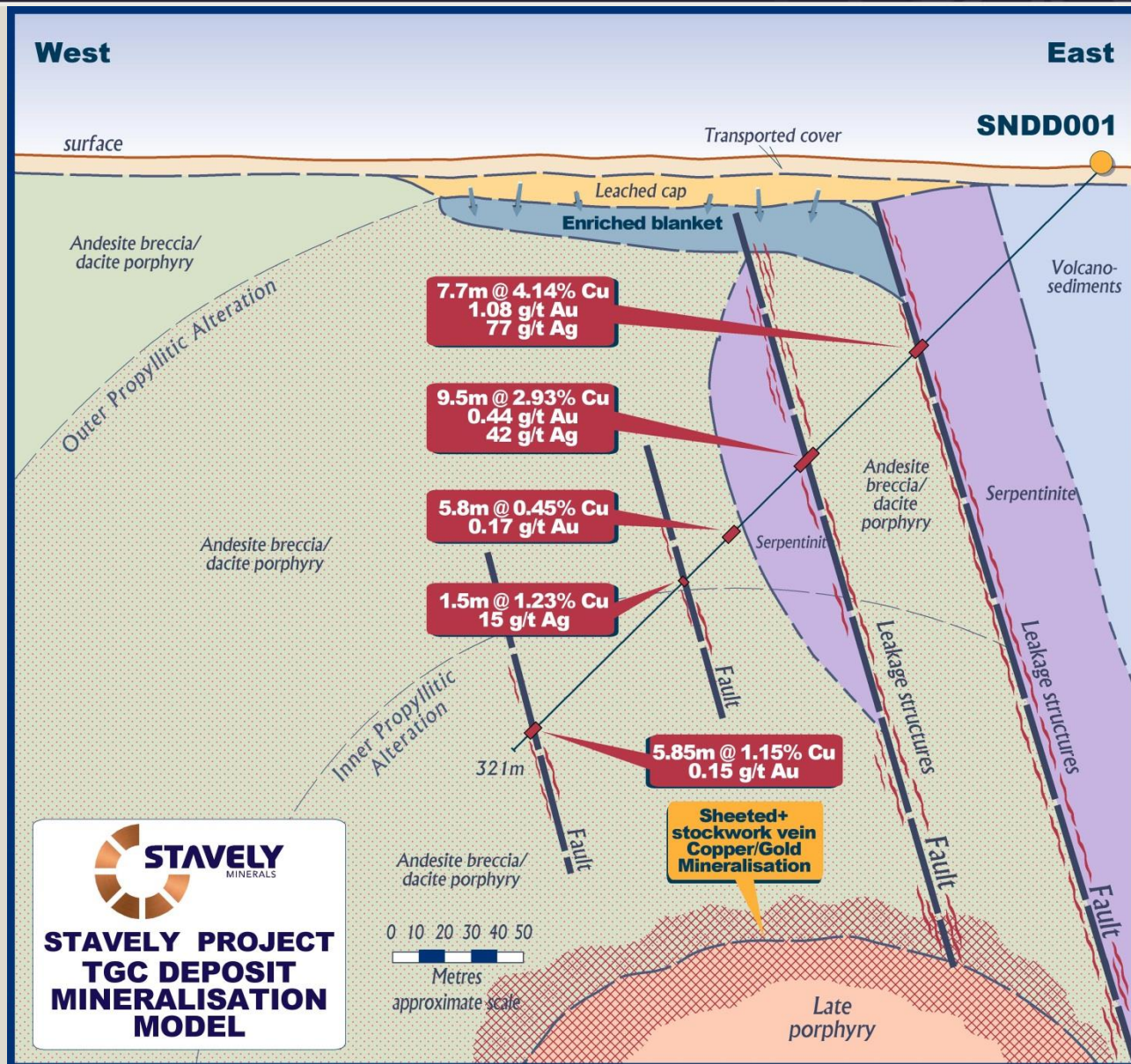


Hematite alteration of feldspars = good for gold

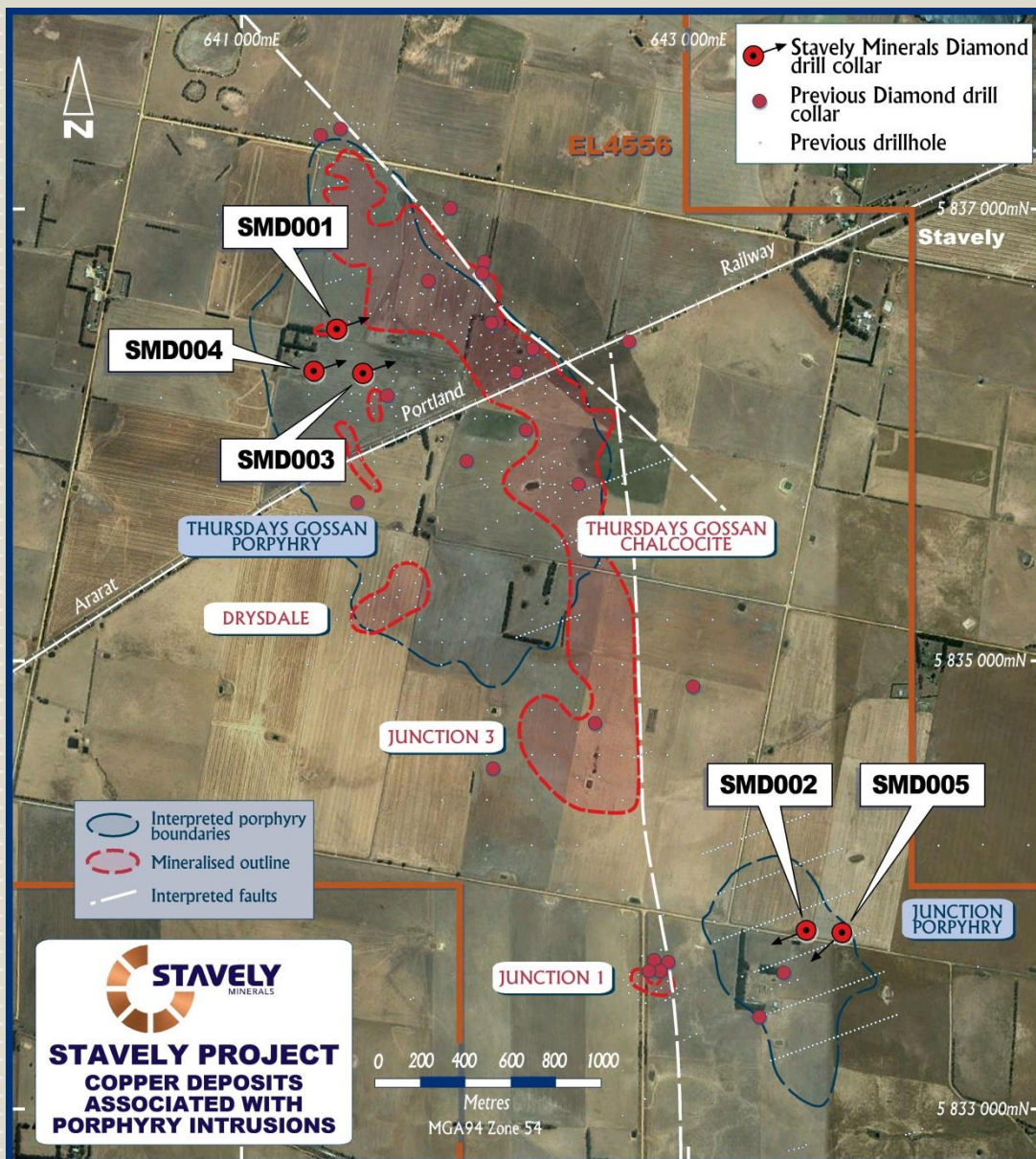


Argillic to advanced argillic alteration = in the top of the system
(best mineralisation should be at depth below)

STAVELY PROJECT



STAVELY PROJECT



Thursday's Gossan Porphyry

Conducted an IP geophysical survey and generated a large 25mV/V chargeability anomaly.

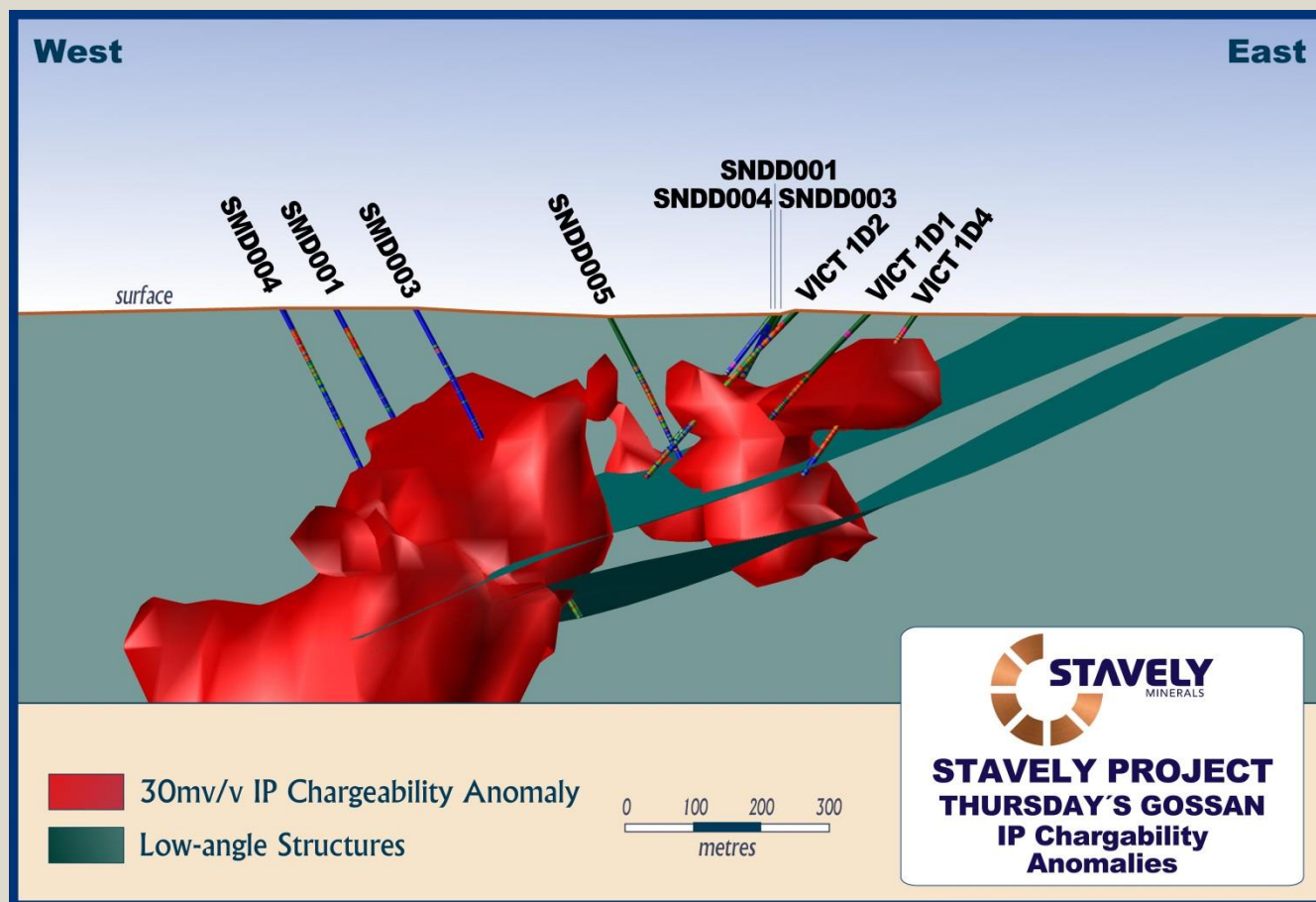
Drill tested with 3 x deep diamond drill holes to 520-600 metres depth.

STAVELY PROJECT

STAVELY
MINERALS

Thursday's Gossan Porphyry

2014 deep diamond drilling intercepted well-developed phyllic alteration (sericite-pyrite) which corresponded well with an IP chargeability anomaly – intercepted major low-angle structure

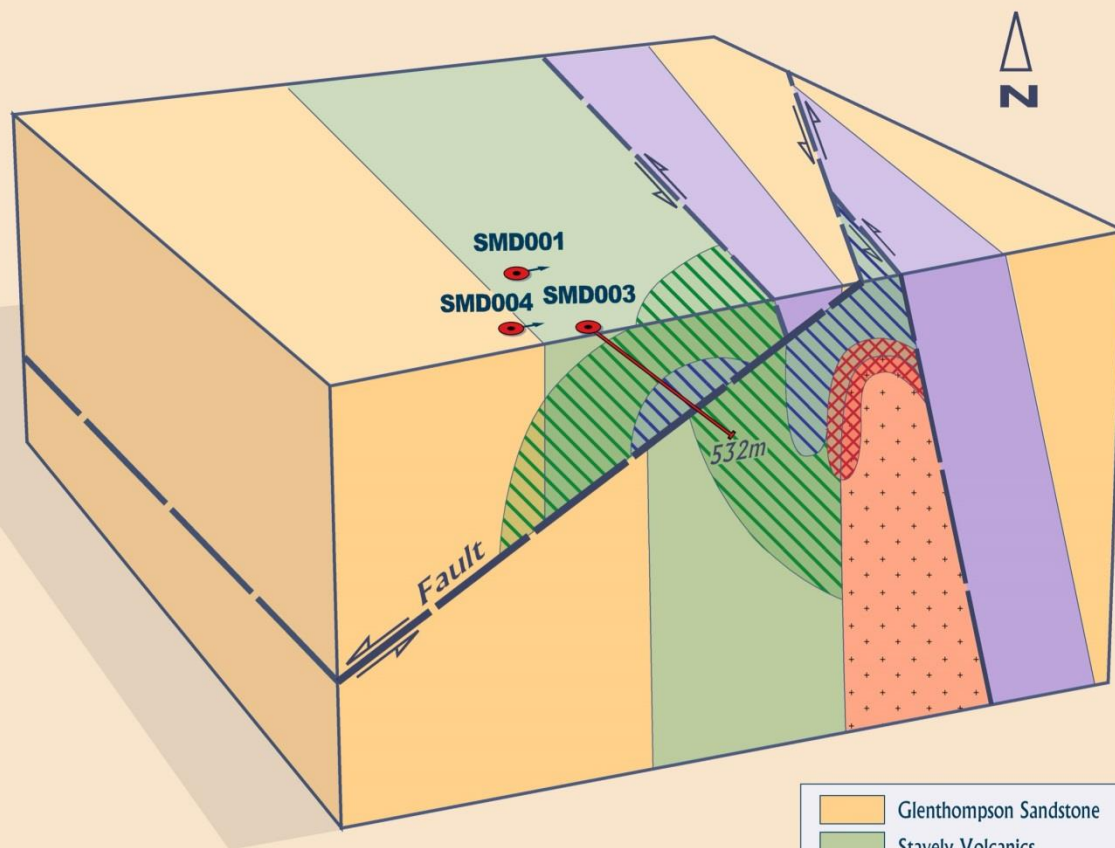


STAVELY PROJECT



Thursday's Gossan Porphyry

The three deep diamond drill holes identified a low-angle structural offset to the porphyry system



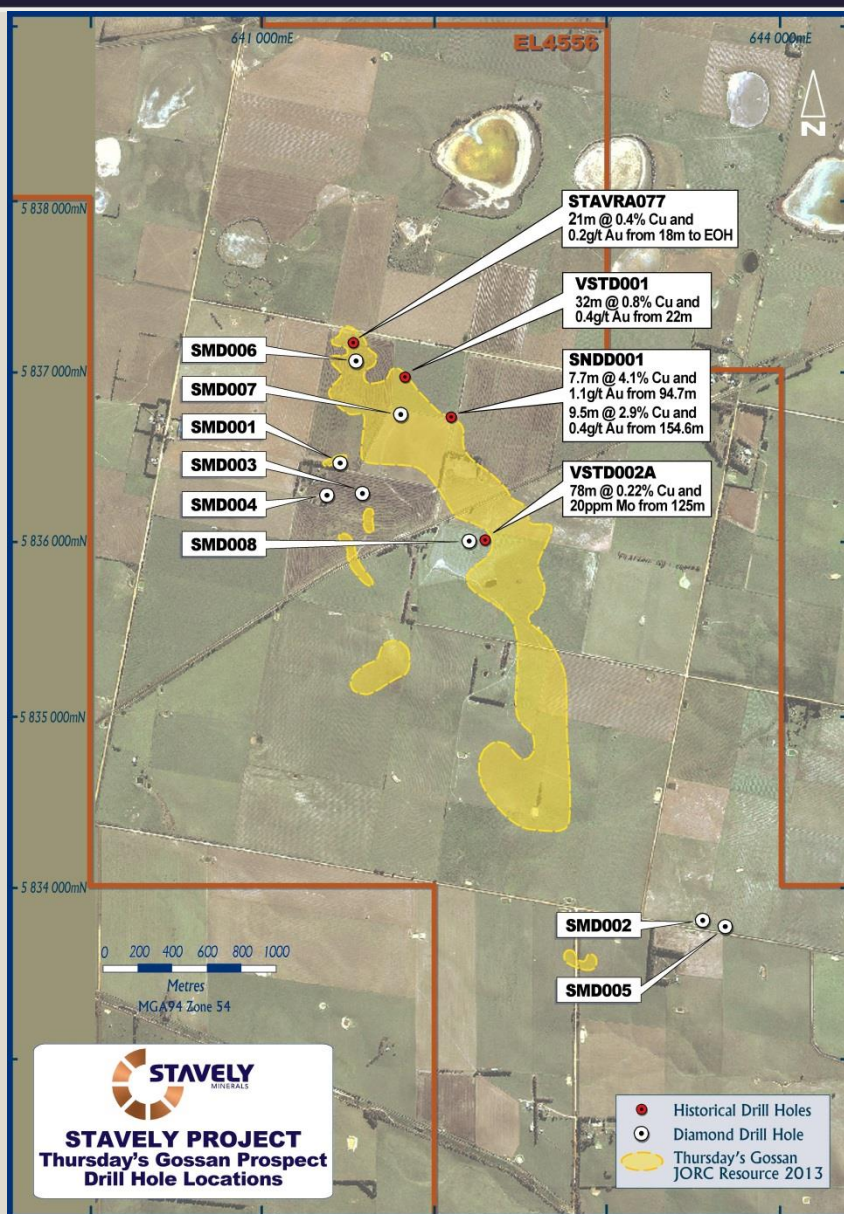
~ 500 metres

A scale bar consisting of a horizontal line with alternating black and white segments, representing a distance of approximately 500 metres.

**Thursday's Gossan
Prospect 3D Model**

not to scale

STAVELY PROJECT

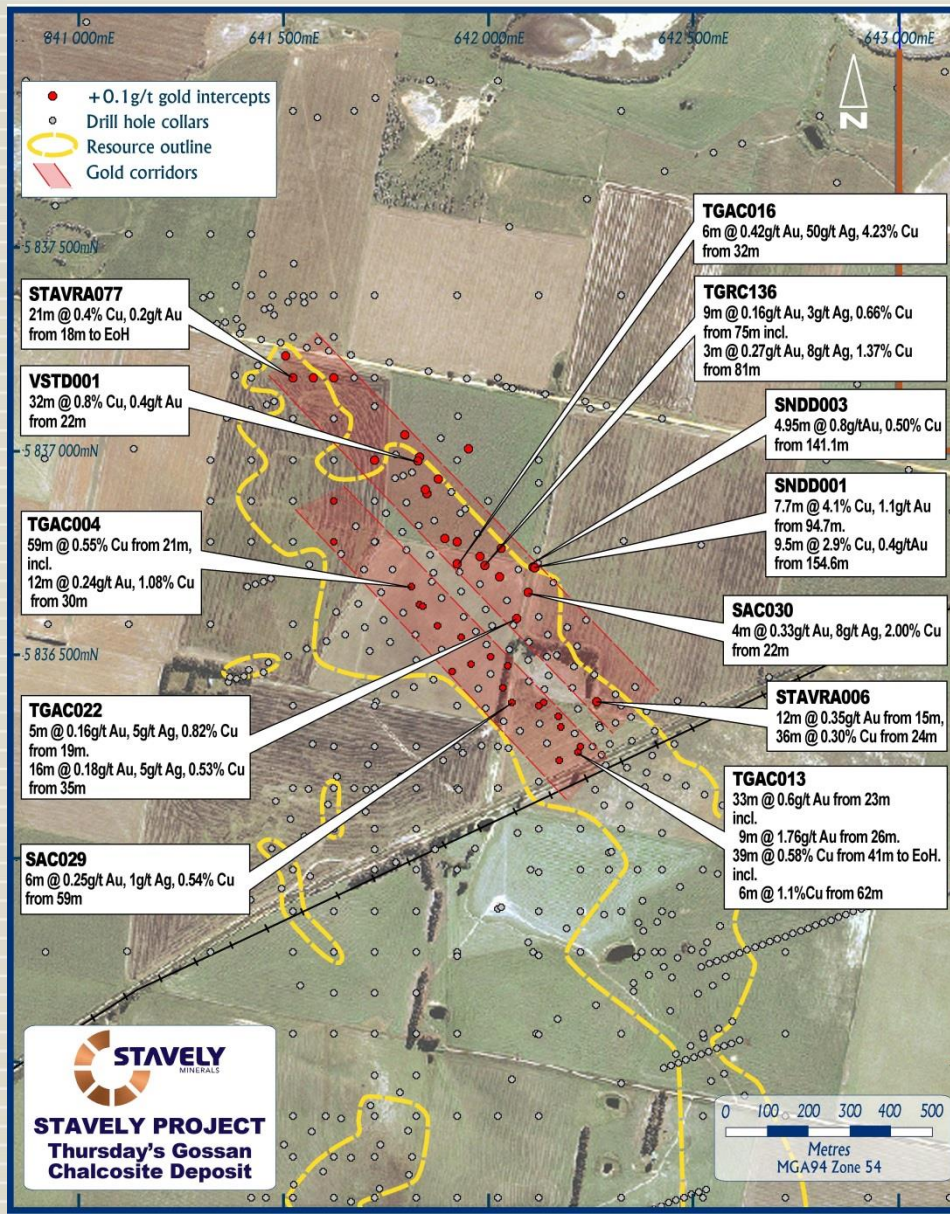


Thursday's Gossan Porphyry

Stavely Minerals completed a further 3 diamond drill holes testing below the low-angle structure.

Drill holes SMD006 and SMD007 were targeting zones of higher tenor copper mineralisation with associated gold.

STAVELY PROJECT



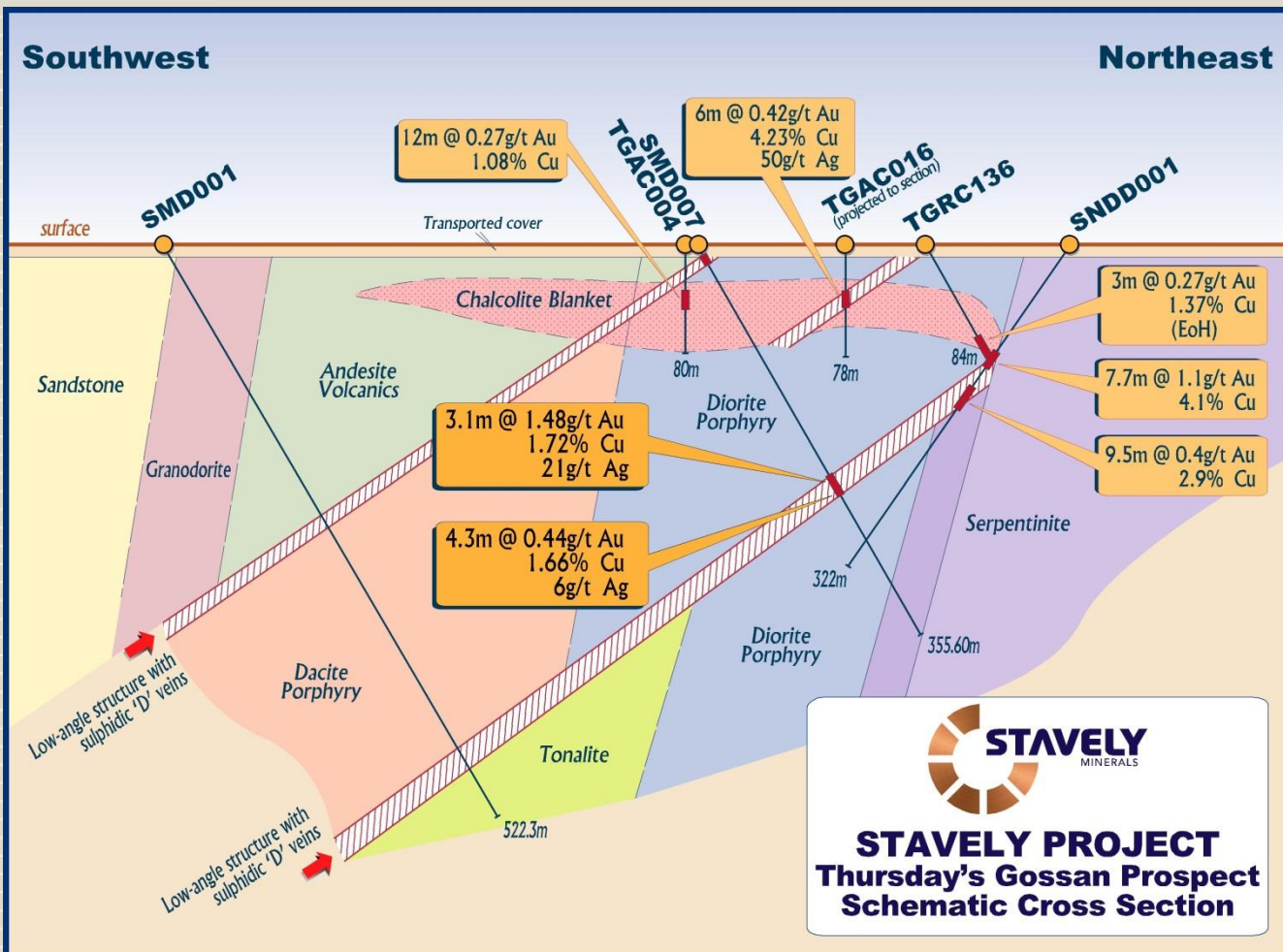
Thursday's Gossan Porphyry

It is now recognised that there are two parallel zones of near-surface high-tenor copper mineralisation with associated silver and gold....

And, these zones correspond to the near-surface expression of low-angle structures hosting sulphidic porphyry 'D' veins

see ASX announcement 22/02/2017 and available from www.stavely.com.au

STAVELY PROJECT



Thursday's Gossan Porphyry

High tenor copper, silver and gold grades occur where the low-angle structures with sulphidic porphyry 'D' veins approach surface.

- 3.1m @ 1.48g/t Au and 1.72% Cu
- 4.3m @ 0.44g/t Au and 1.66% Cu

see ASX announcement 9/03/2017 and available from www.stavely.com.au

Thursday's Gossan Porphyry

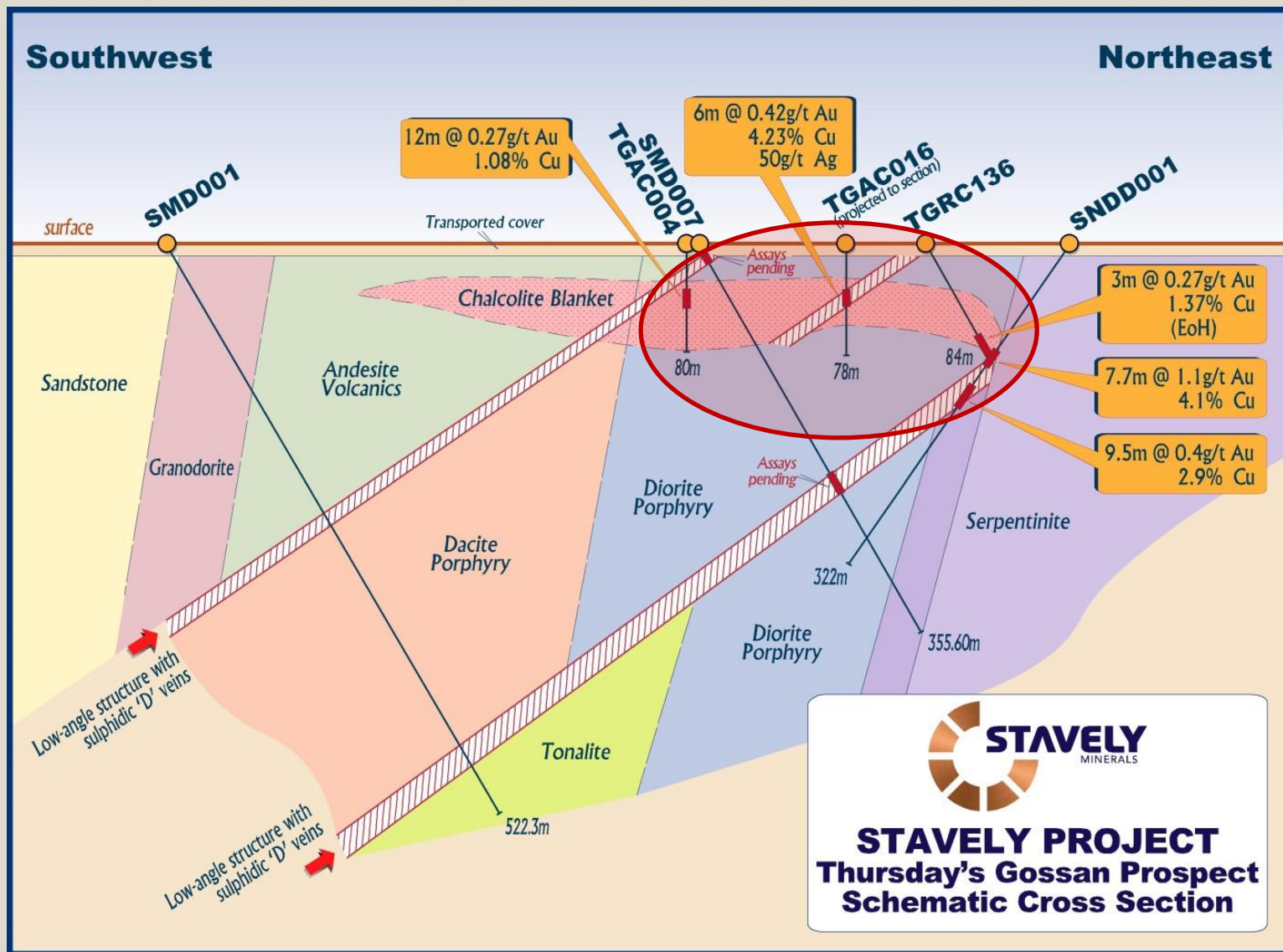
High tenor copper, silver and gold grades occur where the low-angle structures with sulphidic porphyry 'D' veins approach surface



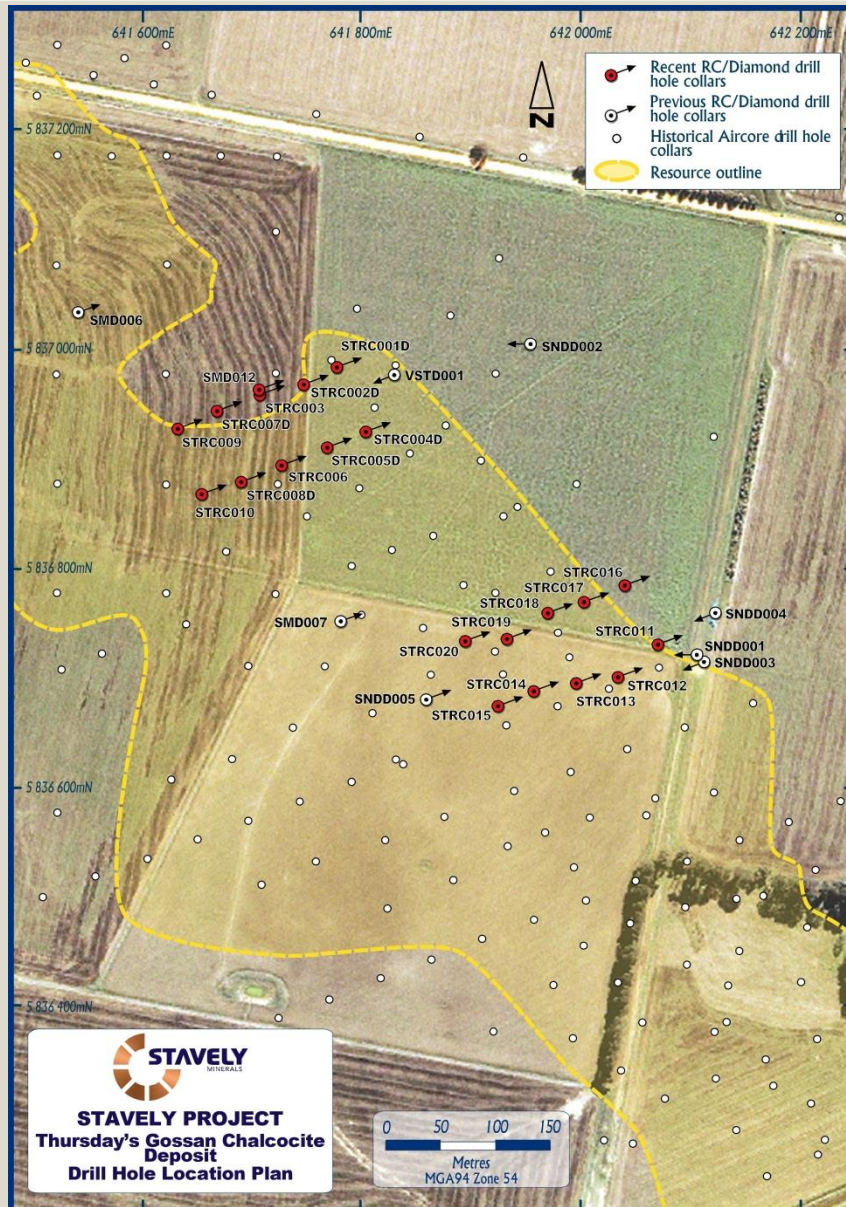
STAVELY PROJECT



Thursday's Gossan Porphyry – RC drilling to target shallow gold and copper



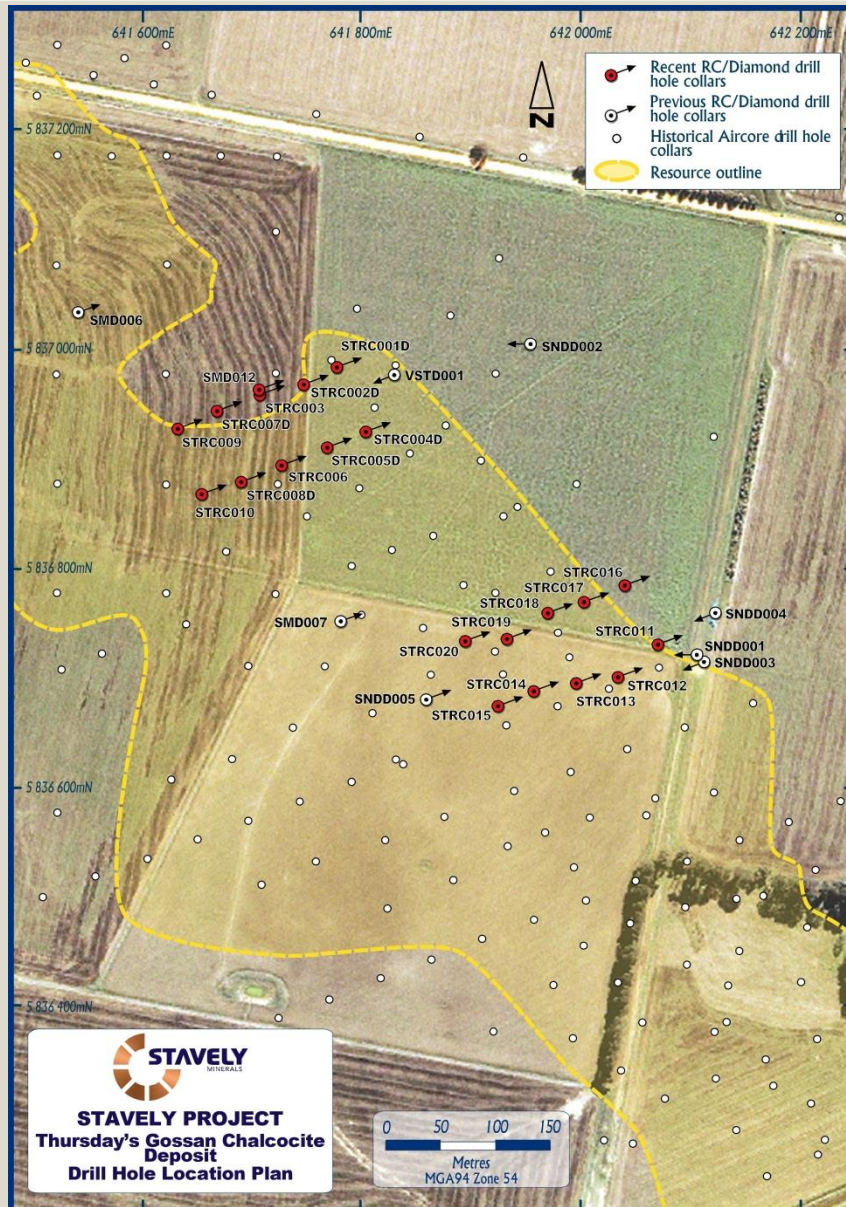
STAVELY PROJECT



Thursday's Gossan Porphyry

Completed 20 x drill hole RC drilling programme to target these high-tenor copper, silver and gold zones – potential for material impact on Mineral Resources update given **NO** silver and gold ever estimated within the Mineral Resource

STAVELY PROJECT



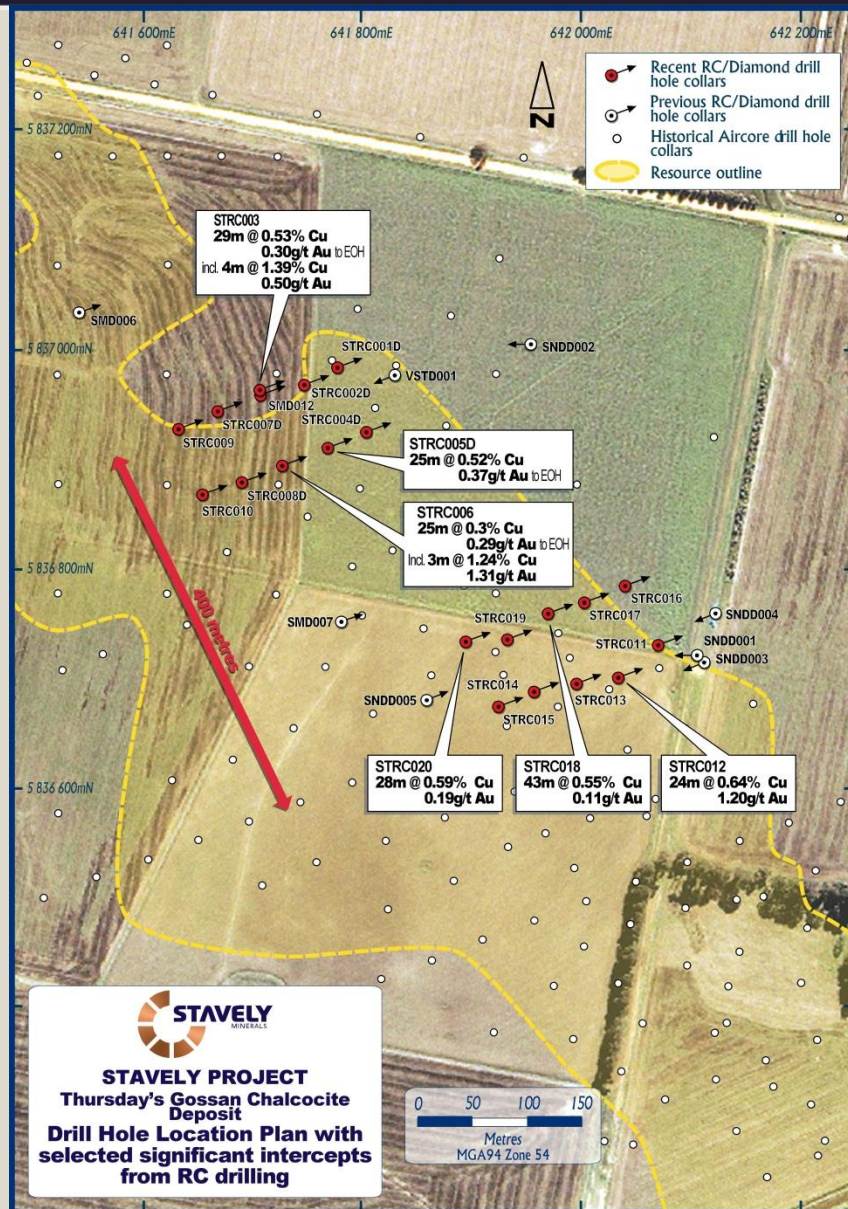
Thursday's Gossan Porphyry

- 24 metres at 0.64% copper and 1.2 g/t gold including:
 - 14 metres at 0.82% copper and 1.99 g/t gold including
 - 1 metre at 0.84% copper and 22.2 g/t gold
- 29 metres at 0.53% copper and 0.30 g/t gold to end of hole (EoH), including
 - 4 metres at 1.39% copper, 0.5 g/t gold and 55 g/t silver
- 25 metres at 0.52% copper and 0.37 g/t gold to EoH
- 3 metres at 4.14% copper, 0.36 g/t gold and 59 g/t silver
- 43 metres at 0.55% copper and 0.11 g/t gold
- 28 metres at 0.59% copper and 0.19 g/t gold
- 8 metres at 0.74% copper and 0.17 g/t gold
- 25 metres at 0.30% copper and 0.29 g/t gold to EoH including
 - 3 metres at 1.24% copper and 1.31 g/t gold

Thursday's Gossan Porphyry

- 24 metres at 0.64% copper and 1.2 g/t gold including:
 - 14 metres at 0.82% copper and 1.99 g/t gold including
 - 1 metre at 0.84% copper and 22.2 g/t gold
- 29 metres at 0.53% copper and 0.30 g/t gold to end of hole (EoH), including
 - 4 metres at 1.39% copper, 0.5 g/t gold and 55 g/t silver
- 25 metres at 0.52% copper and 0.37 g/t gold to EoH
- 3 metres at 4.14% copper, 0.36 g/t gold and 59 g/t silver
- 43 metres at 0.55% copper and 0.11 g/t gold
- 28 metres at 0.59% copper and 0.19 g/t gold
- 8 metres at 0.74% copper and 0.17 g/t gold
- 25 metres at 0.30% copper and 0.29 g/t gold to EoH including
 - 3 metres at 1.24% copper and 1.31 g/t gold

STAVELY PROJECT



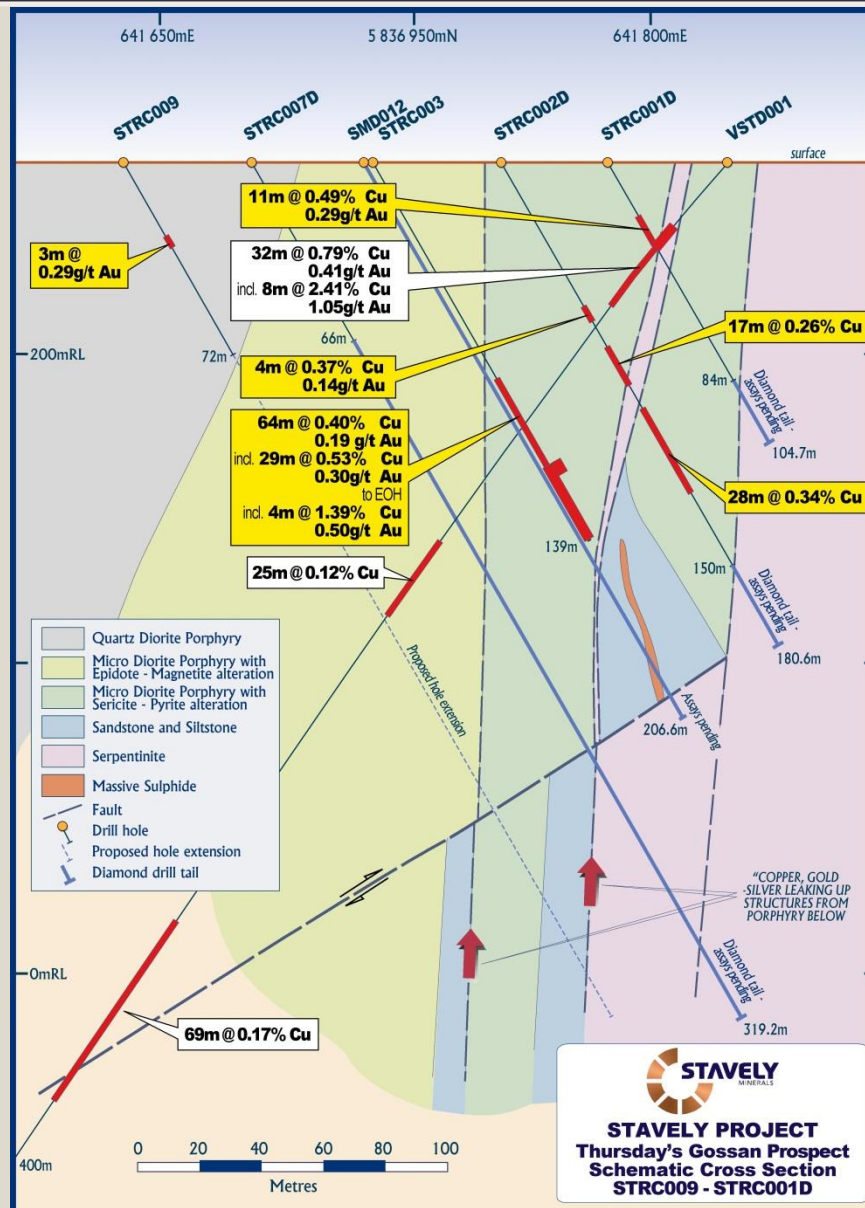
Thursday's Gossan Porphyry

RC drill results over a strike extent of +400 metres and open in all directions.

Diamond 'tails' assays pending.

Drilling re-commenced to complete more 'tails' on RC drill holes that finished in mineralisation.

STAVELY PROJECT

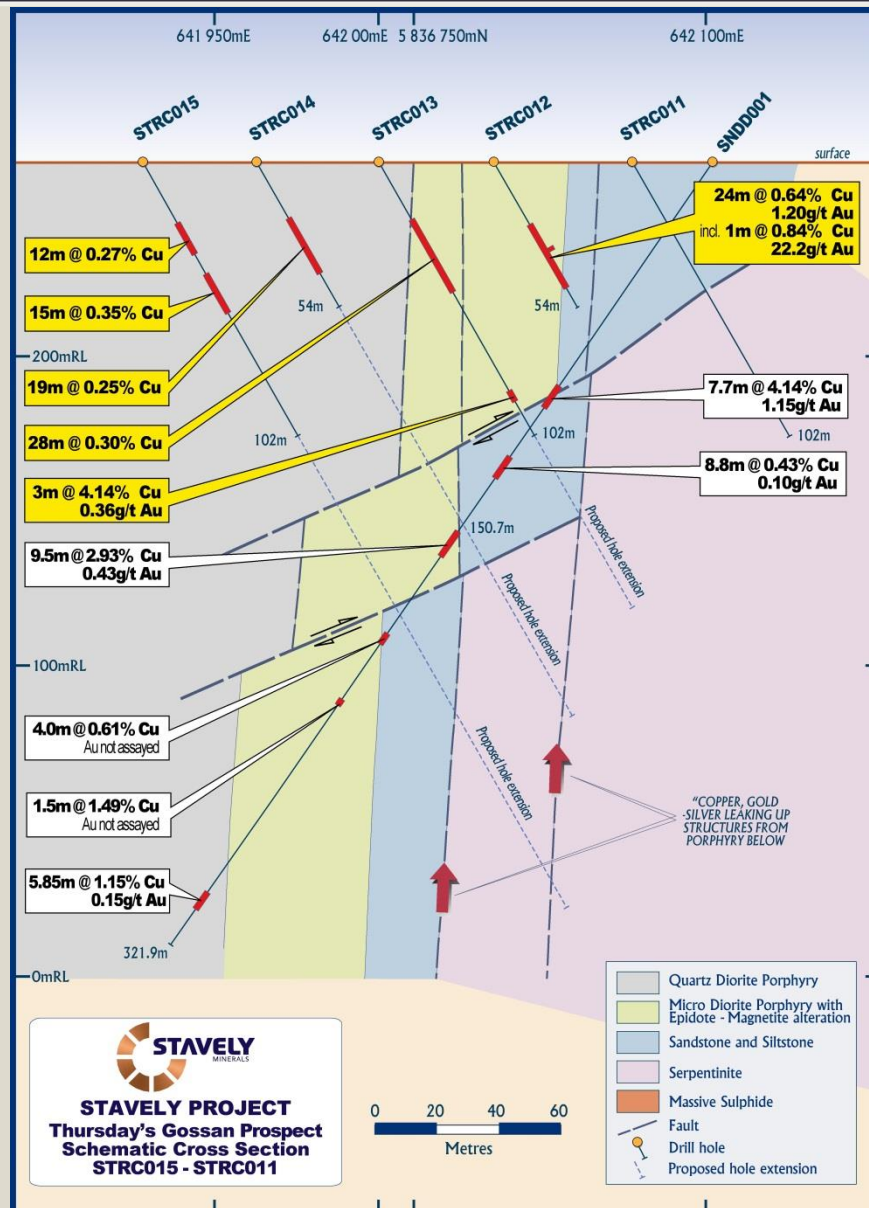


Thursdays Gossan Porphyry

Shallow RC drill results include:

- 29m at 0.53% copper and 0.3g/t gold to end of hole

STAVELY PROJECT



Thursday's Gossan Porphyry

Shallow RC drill results include:

- 24m at 0.64% copper and 1.2g/t gold

For comparative purposes the 2016 Ore Reserve at Cadia Ridgeway is 80 million tonnes at 0.28% copper and 0.54 g/t gold

Newcrest Mining Limited – Explanatory Notes to the Annual Mineral Resources and Ore Reserve Statement – 31 December 2016

Thursday's Gossan Porphyry



STRC008D 157.1m – pyrite-chalcopyrite-bornite (purple) sulphide mineralisation – assays pending

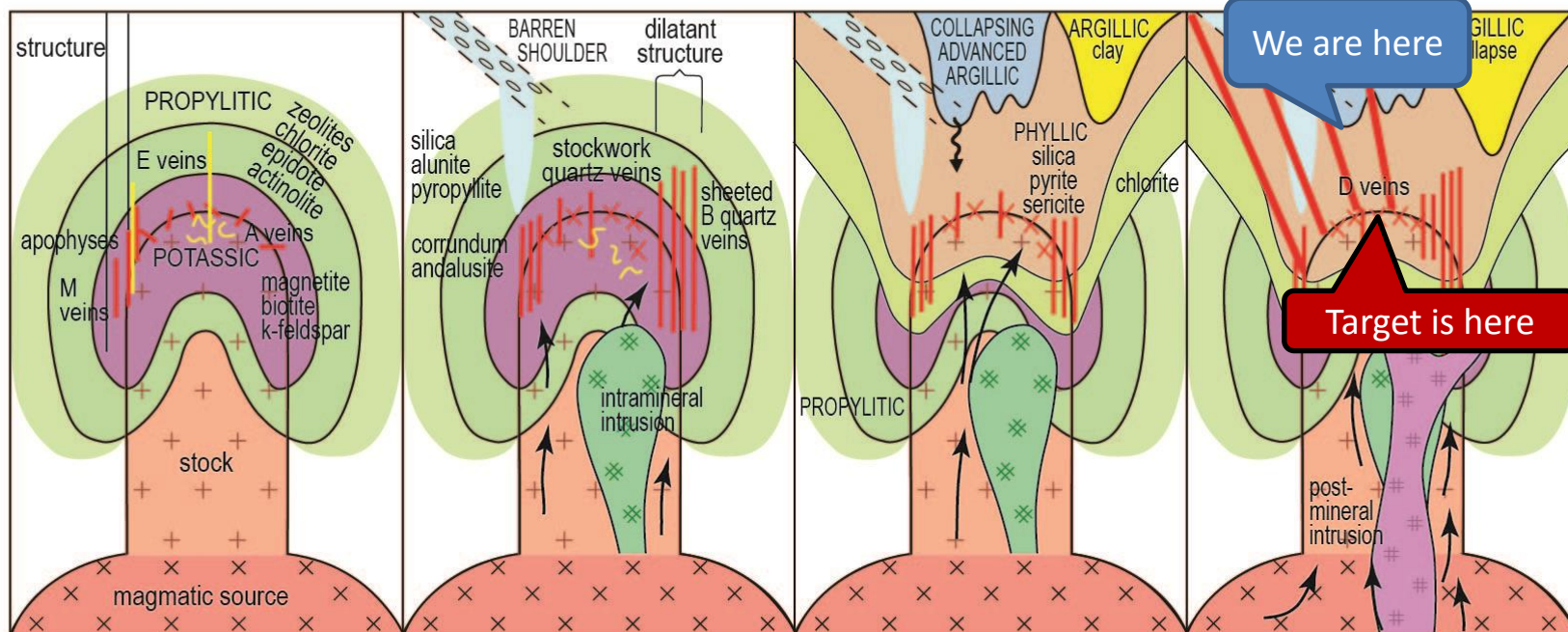


STRC005D 139.9m – poly-phase silica / pyrite / hematite – assays pending.

STAGED PORPHYRY Cu-Au EVOLUTION

EARLY

LATE



Intrusion emplacement and heat transfer with prograde alteration. E veins.

Initiation of A & M quartz vein formation and early mineralization.

B quartz vein formation.

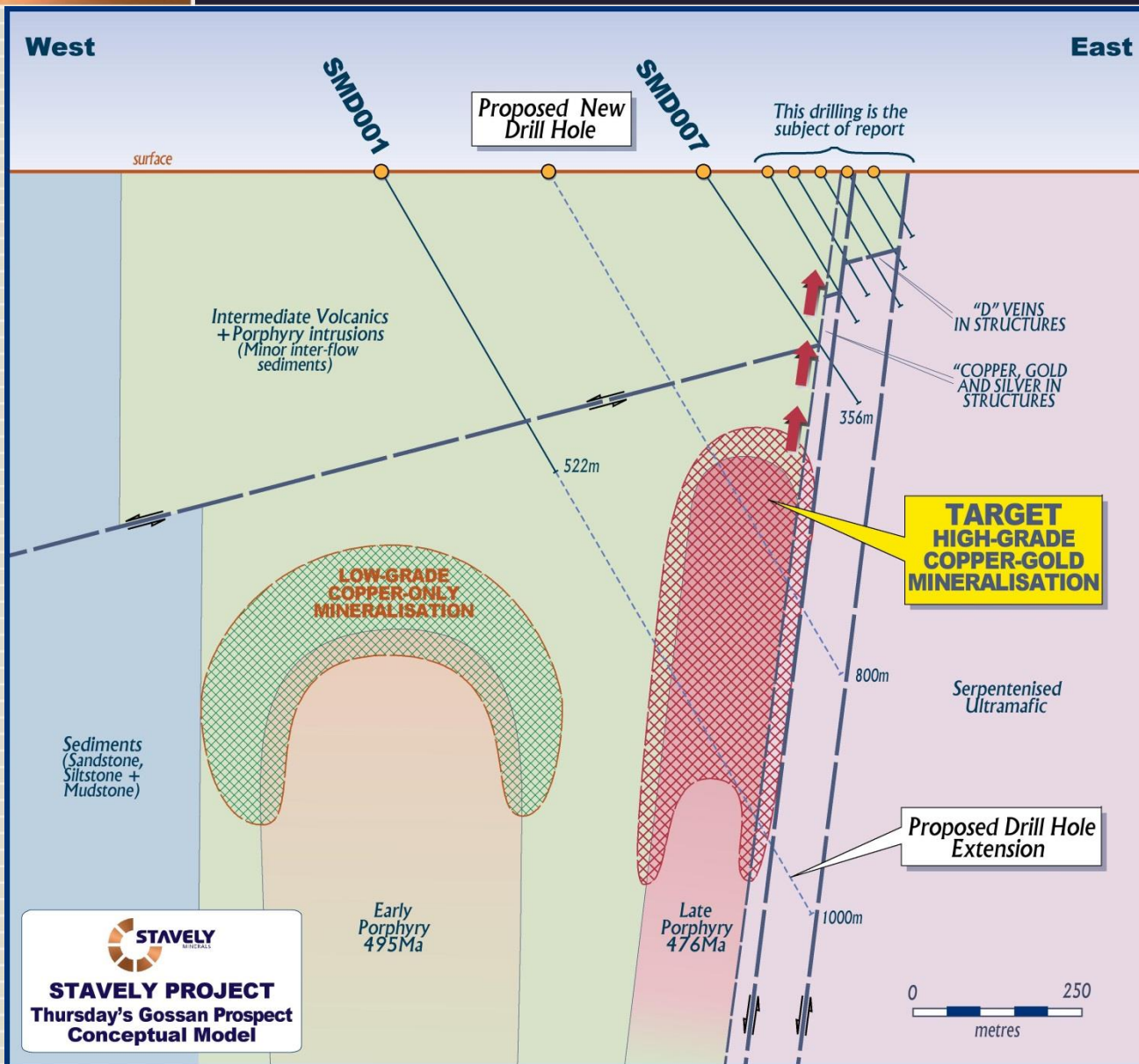
Exsolution of magmatic volatiles and formation of barren shoulder.

Cooling and collapsing of retrograde phyllic and argillic alteration and overprinting collapsing advanced argillic alteration..

Local retrograde alteration selvages to B grades.

Continued retrograde collapse. D vein mineralization, & post-mineral features.

STAVELY PROJECT



Thursday's Gossan Porphyry

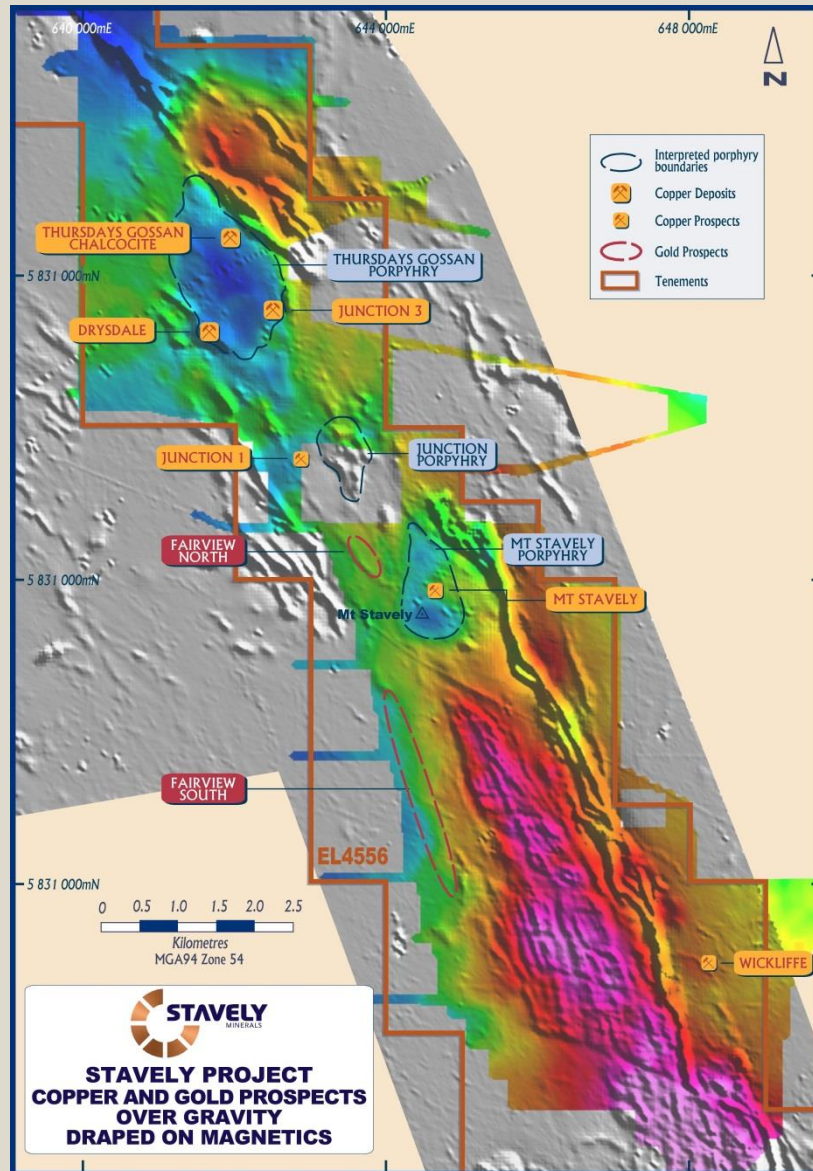
The conceptual model has 2 separate porphyry events – The first is a large low-grade copper only event.

The second is a potentially smaller but higher grade copper-gold event. This is the target.

A decorative vertical bar runs along the left edge of the slide. It is divided into two sections: the top section is a solid orange color, and the bottom section is a light beige color with thin, horizontal white lines.

FAIRVIEW GOLD PROSPECT

STAVELY PROJECT

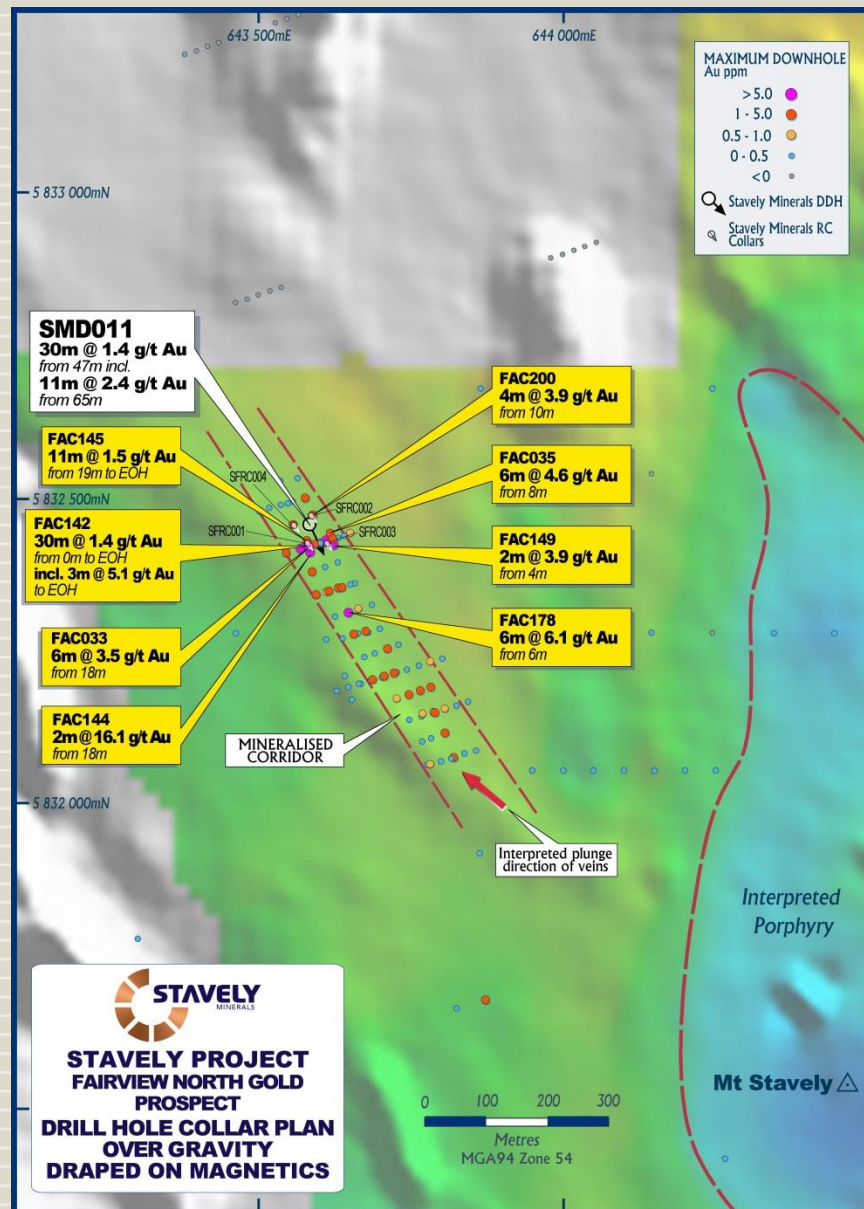


Mount Stavelly Porphyry and Fairview Gold

- ✓ Interpreted buried porphyry reflected in pronounced gravity low
- ✓ 5km of peripheral mesothermal to epithermal gold associated with quartz-sulphide veins (adularia noted)

STAVELY PROJECT

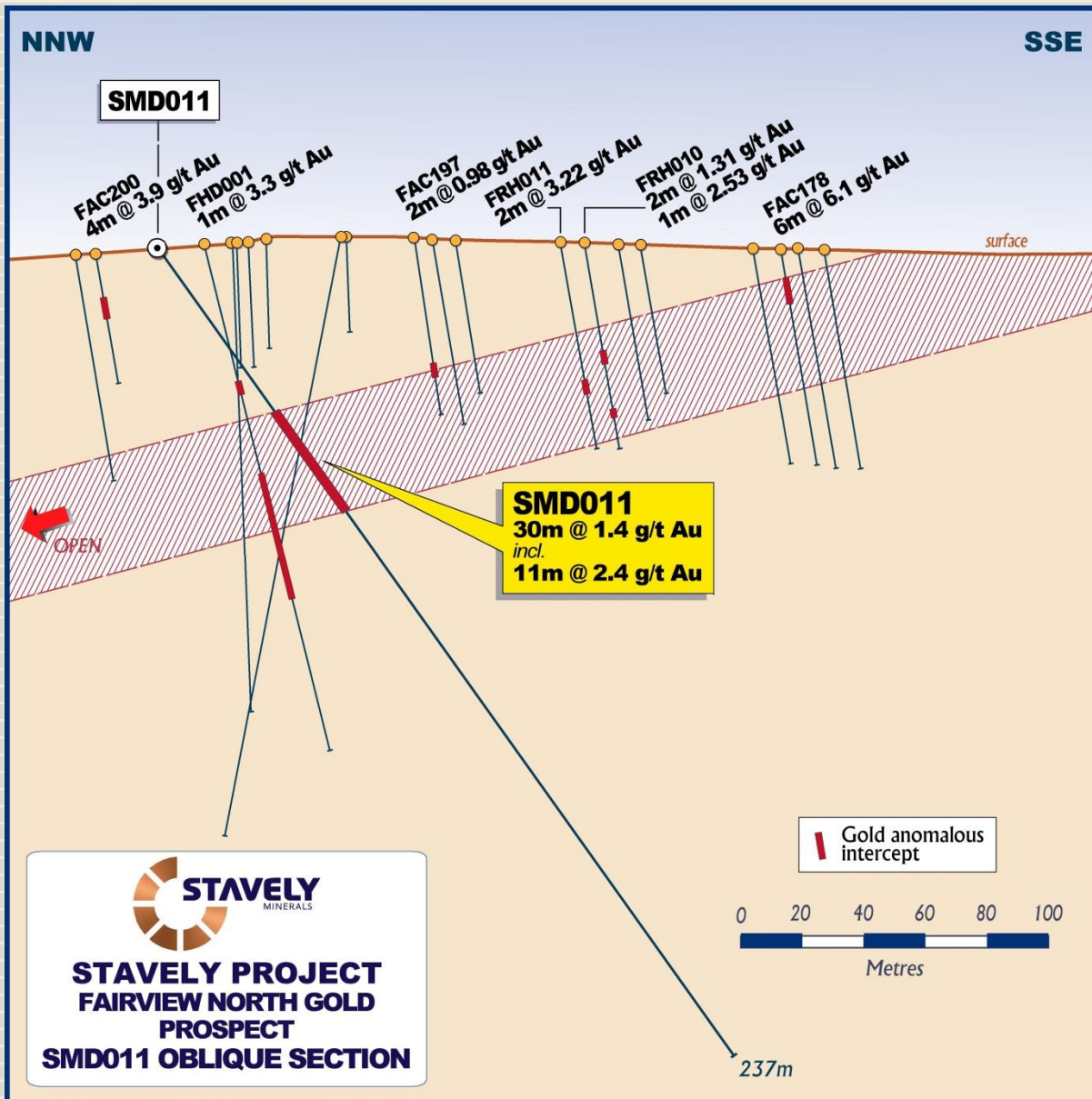
STAVELY
MINERALS



Fairview Gold Prospect

- ✓ Inferred buried porphyry reflected in pronounced gravity low
- ✓ Marginal low-sulphidation style gold mineralisation
- ✓ New interpretation of structural controls
- ✓ SMD011 returned **30m at 1.4g/t gold** from 47m drill depth gold including **11m at 2.4g/t gold**
- ✓ 4 x additional RC drill holes completed – assays pending

STAVELY PROJECT



Fairview Gold Prospect

- ✓ Low-angle structural control
- ✓ 4 x additional RC drill holes completed to test
- ✓ Assays pending

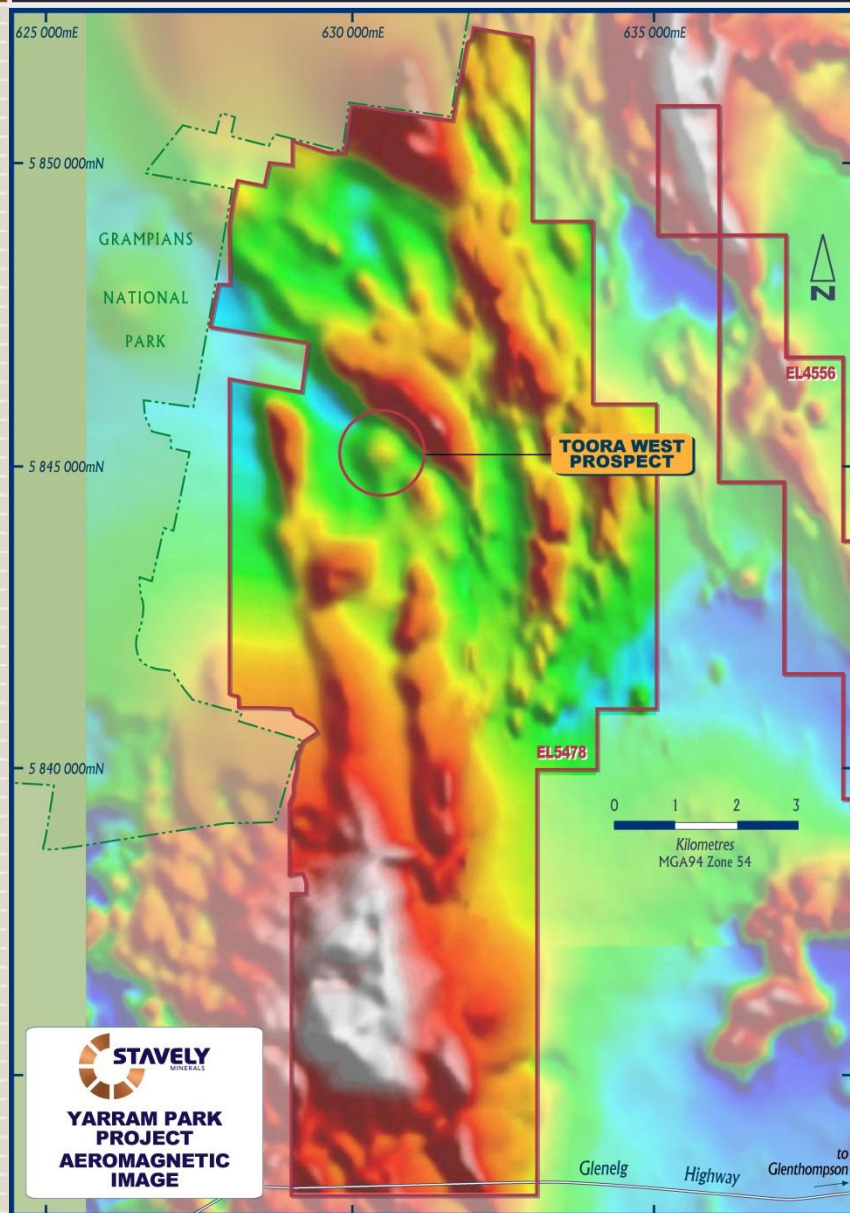
see ASX announcement 18/04/2017 and available from www.stavely.com.au

A decorative vertical bar runs down the left side of the slide. It is divided into two sections: the top section is a solid orange color, and the bottom section is a light beige color with thin, horizontal white lines.

YARRAM PARK PROJECT

YARRAM PARK PROJECT

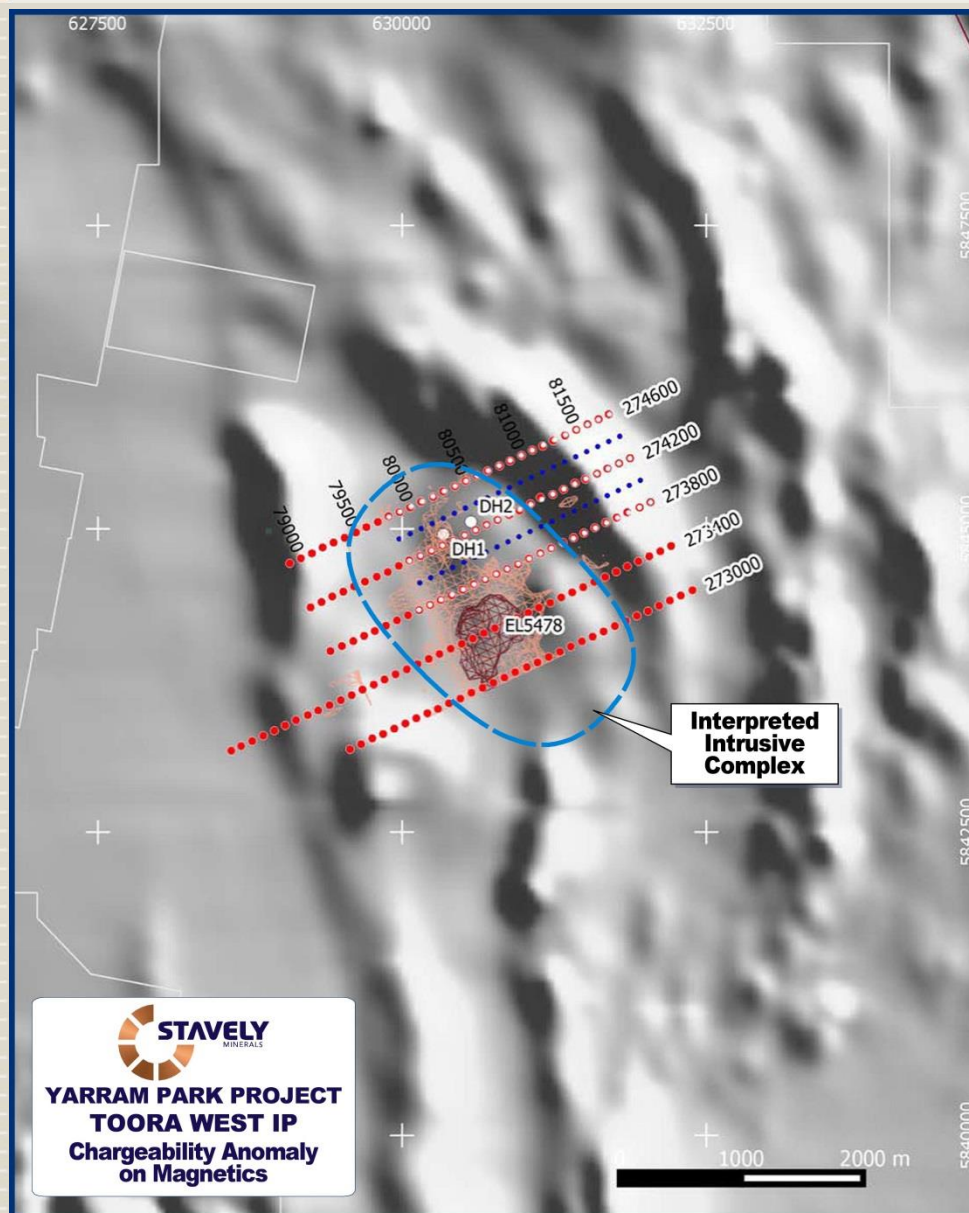
STAVELY
MINERALS



Toora West prospect

- ✓ Magnetic / gravity geophysical anomaly
- ✓ 'Blind' target beneath younger transported cover

YARRAM PARK PROJECT



Toora West prospect

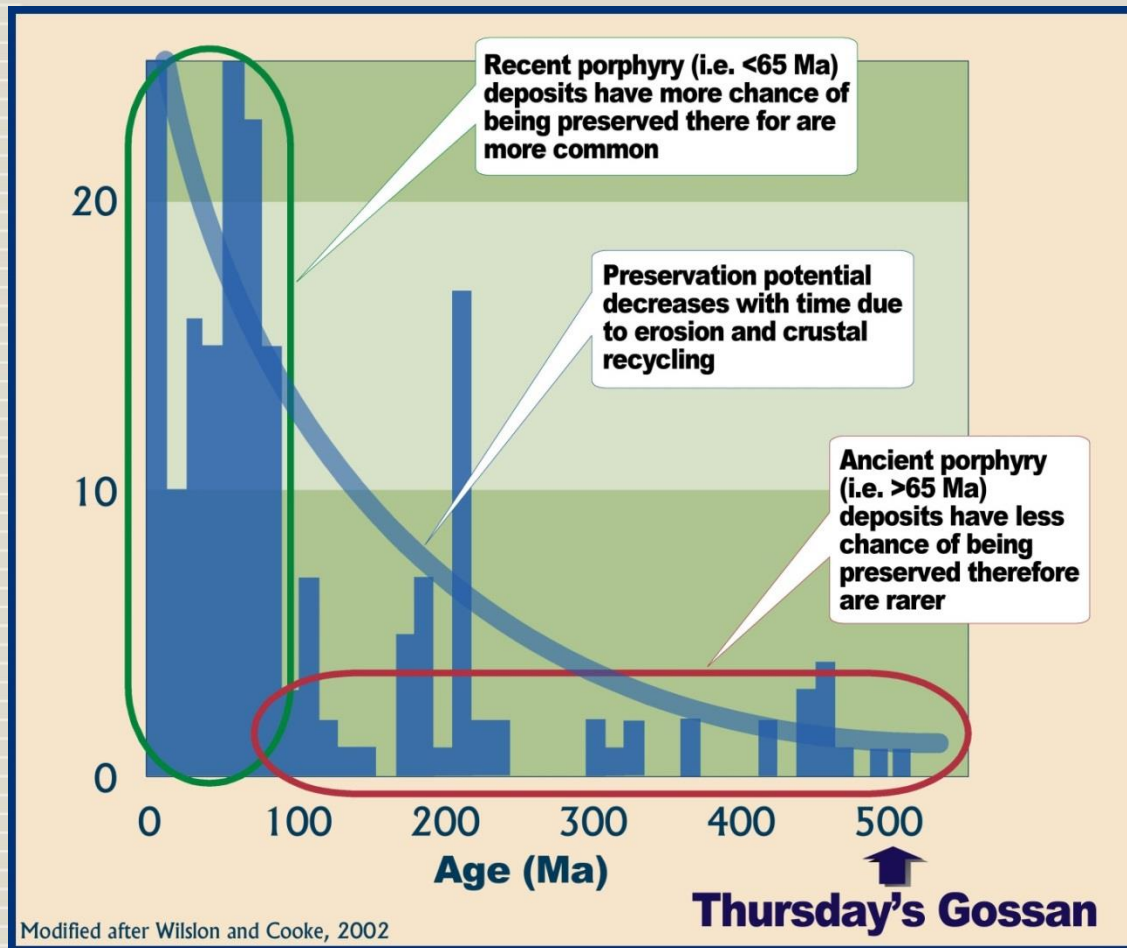
- ✓ Early 2017 drilling by Stavely Minerals has identified early, hot potassic porphyry-style alteration
- ✓ Subsequent extension to IP geophysical survey has identified a very large and very strong chargeability anomaly 500m in diameter at 50mV/V
- ✓ Potentially disseminated sulphides associated with copper-gold mineralisation
- ✓ For drill testing late 2017

see ASX announcement 12/07/2017 and available from www.stavely.com.au

A decorative vertical bar runs down the left side of the slide. It is divided into two sections: the top section is a solid orange color, and the bottom section is a light beige color with thin, horizontal white lines.

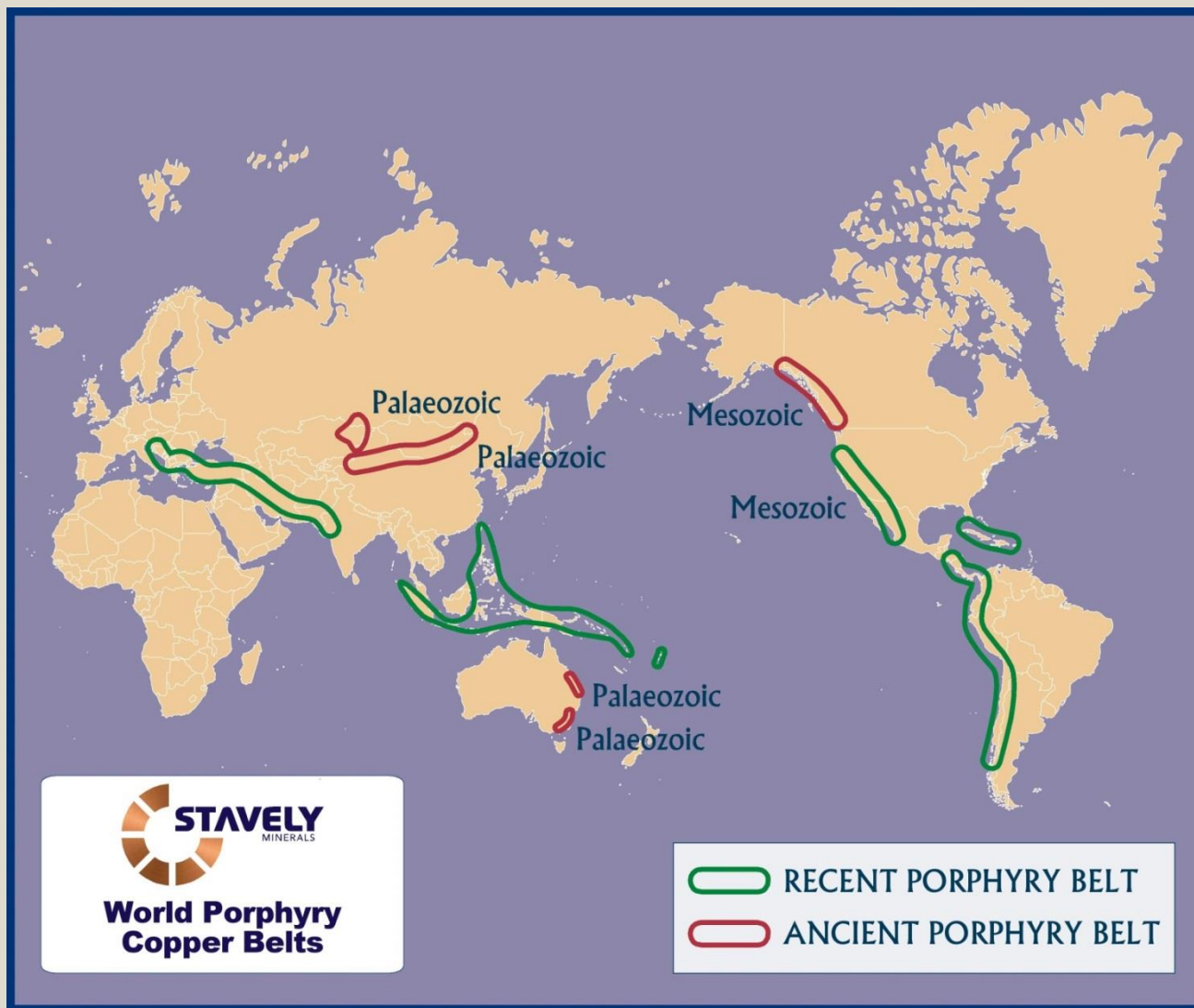
WHY LOOK FOR PORPHYRIES IN WESTERN VICTORIA?

Why look for porphyries in western Victoria?

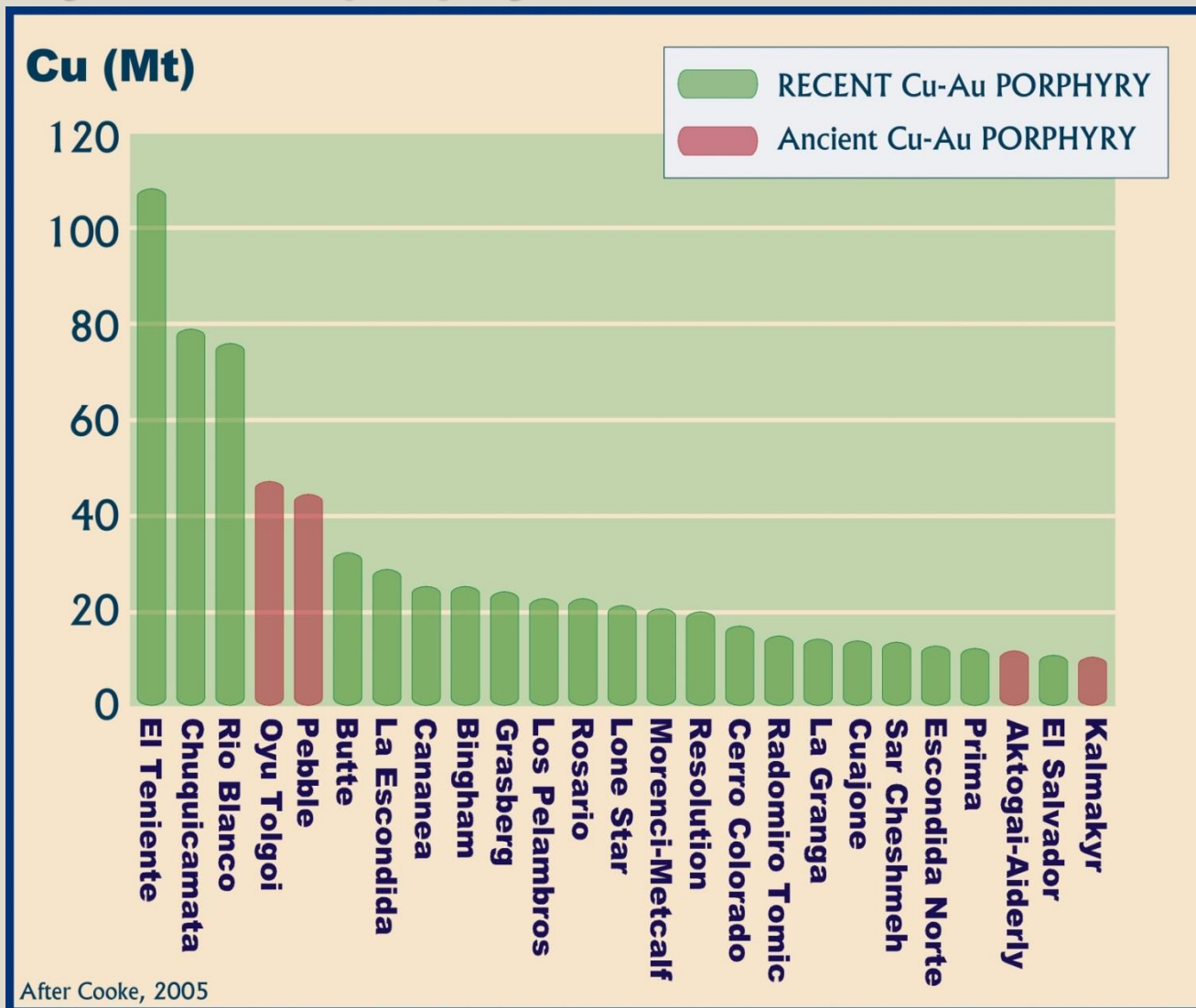


- Porphyry deposit examples from as early as Archaean age
- Likelihood of porphyry deposit preservation decreases with age due to erosion and crustal recycling

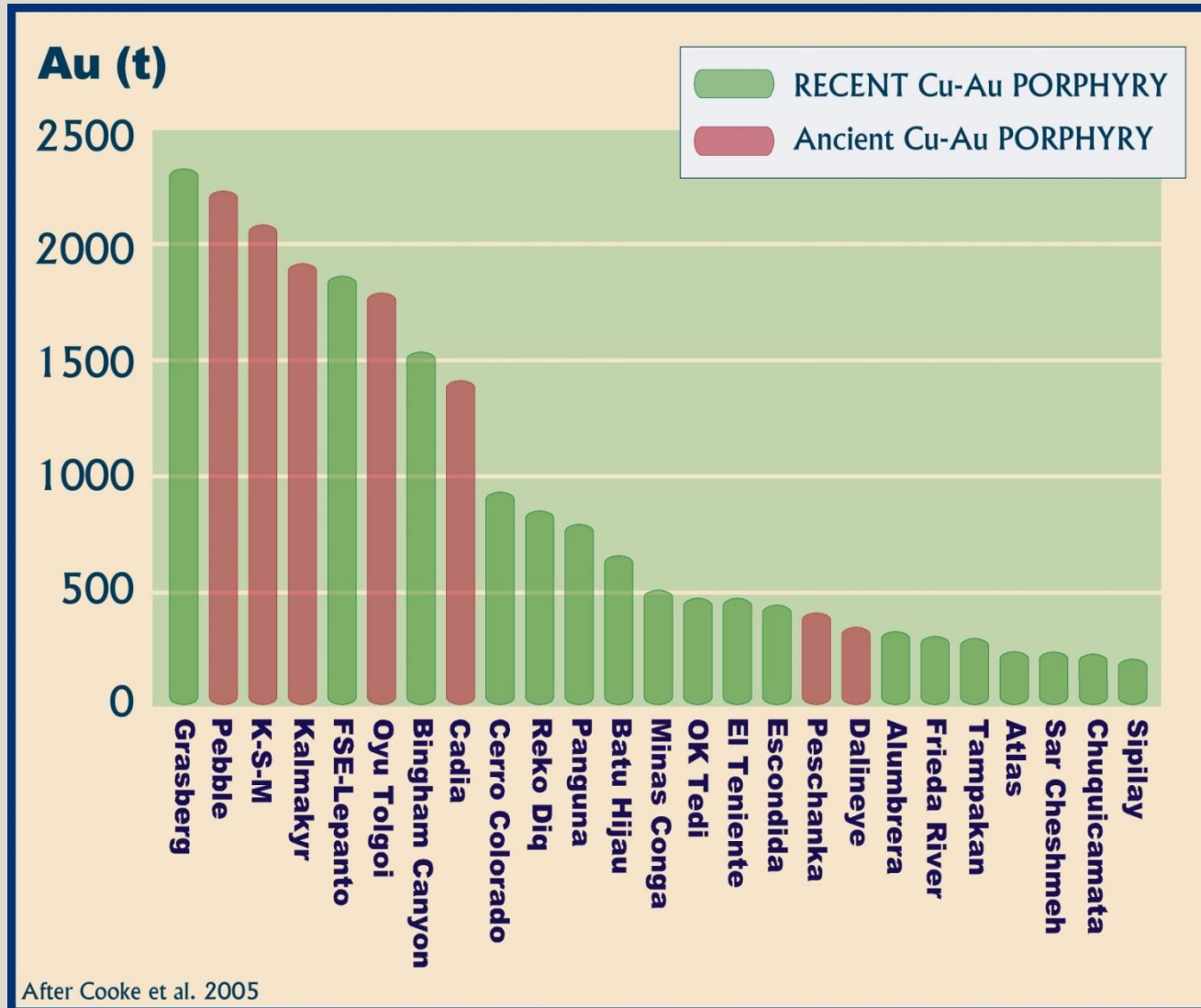
Why look for porphyries in western Victoria?



Why look for porphyries in western Victoria?



Why look for porphyries in western Victoria?



Why look for porphyries in western Victoria?

Because they are from a 'family' of deposits that are over-represented amongst the largest 'giant' gold deposits ever known.

Stavely is looking for a Victorian relative in this 'family' of gold giants. That is the opportunity.

Thank You

Contact Us:

Stavely Minerals Limited

Level 1, 168 Stirling Highway

Nedlands WA 6009

www.stavely.com.au

info@stavely.com.au

Ph: 08 9287 7630

The information in this presentation is extracted from information available to view on www.stavely.com.au. The company confirms that it is not aware of any new information or data that materially affects the information included in the original market announcement and, in the case of estimates of Mineral Resources or Ore Reserves, that all material assumptions and technical parameters underpinning the estimates in the relevant market announcement continue to apply and have not materially changed. The company confirms that the form and context in which the Competent Person's findings are presented have not been materially modified from the original market announcement.