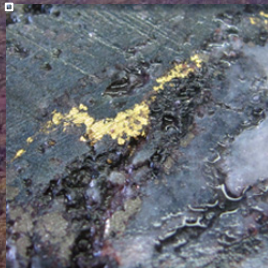




MACPHERSONS

Kalgoorlie Boorara Gold



The information contained in this presentation has been prepared by MacPhersons Resources Ltd (MRP). This presentation is not an offer, invitation, solicitation or other recommendation with respect to the subscription for, purchase or sale of any securities in MRP. This presentation has been made available for information purposes only and does not constitute a prospectus, short form prospectus, profile statement or offer information statement. This presentation is not subject to the disclosure requirements affecting disclosure documents under Chapter 6D of the Corporations Act.

While the information contained in this presentation has been prepared in good faith, neither MRP nor any of its directors, officers, employees, agents or advisors give any representation or warranty, express or implied, as to the fairness, accuracy, completeness or correctness of the information, opinions and conclusions contained in this presentation. Accordingly, to the maximum extent permitted by law, none of MRP, its directors, officers, employees, agents, advisers, nor any other person accepts any liability whether direct or indirect, express or limited, contractual, tortious, statutory or otherwise, in respect of the accuracy or completeness of the information or for any of the opinions contained in this presentation or for any errors, omissions or misstatements or for any loss, howsoever arising, from the use of this presentation.

## **Forward looking Statements**

This presentation may contain statements that may be deemed ‘forward looking statements’. Forward risks, uncertainties and other factors, many of which are outside the control of MRP, can cause actual results to differ materially from such statements. Such risks and uncertainties include, but are not limited to, commodity price volatility, increased production costs and variances in ore grade recovery rates from those assumed in mining plans, as well as political and operational risks and governmental regulation and judicial outcomes. MRP makes no undertaking to update or revise such statements, but has made every endeavour to ensure that they are fair and reasonable at the time of making the presentation.

Investors are cautioned that any forward looking statements are not guarantees of future performance and that actual results or developments may differ materially from those projected in any forward looking statements made.

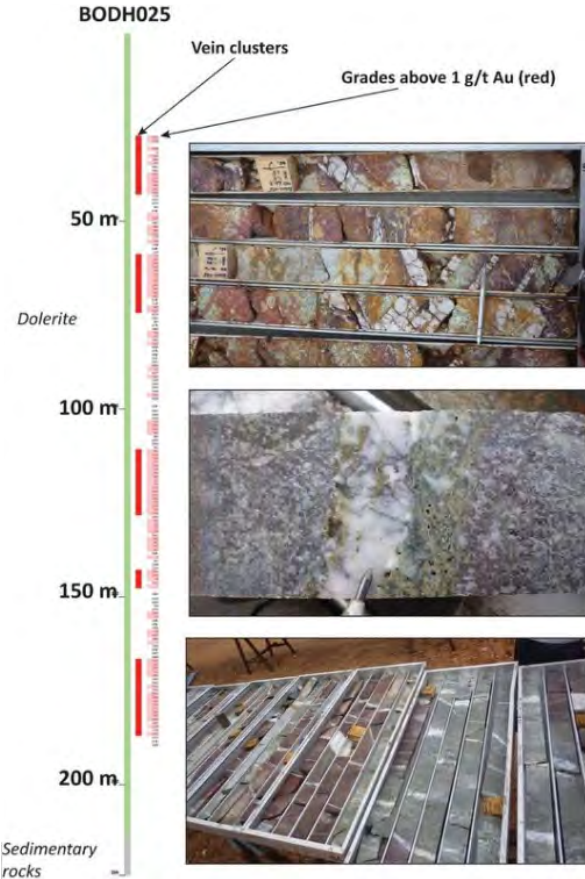
Exploration targets are conceptual in nature and drilling may not convert these to resources.

## 12 month Drilling Program

- Spend A\$9m on the Boorara project in 12 months
- Southern Stockwork - RC Drilling 10 m by 20 m lines (A\$3m) in 3 months plus ongoing deeper diamond drilling
- Crown Jewel - RC/diamond drilling
- Early preliminary 2012 JORC resource of 5.95 Mt at 1.2 g/t (232,000 ounces) to only 80 metre depth – Dec 2016

## Mineral Resource Estimate at Southern Stockwork by end of 2017

- Mine development - 4 gold mills close and Kalgoorlie service benefits will reduce capital build
- Up to 96% gold recovery
- Granted Mine lease



# Corporate Summary



MACPHERSONS

## Market details – Strong fundamentals

<b>ASX Code</b>	<b>MRP</b>
<b>ASX Listed:</b>	December 2010
<b>Ordinary Shares</b>	317 million
<b>Options</b>	5M @ 15c (3yrs) 0.7M @ 36c (3yrs)
<b>Market Cap:</b>	A\$62M (at 19c)
<b>Cash:</b>	A\$2.9 million (at 30/6/17) plus \$A1.5M due 7/12/17
<b>Debt:</b>	Nil

## Strong Board & Management

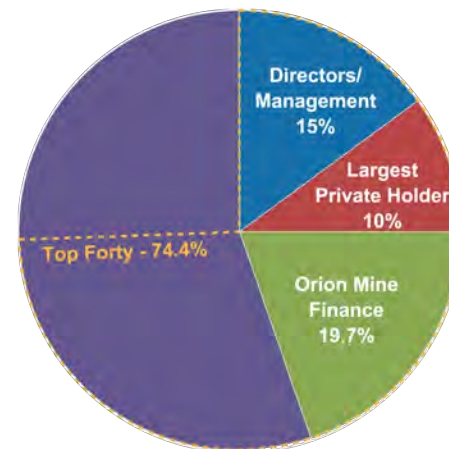
**Ashok Parekh**, Non Exec Chairman  
*Accounting & Mining Company Management*

**Jeff Williams**, Managing Director  
*Mining Engineering, Mine Planning, Development & Operation*

**Peter Rozenauers**, Non Exec Director  
*Mining Engineering, Processing & Operational Management*

**Stephen Hewitt-Dutton**,  
Company Secretary  
*Accounting, Mergers & Acquisitions, Compliance*

**Andrew Pumphrey**, General Manager  
*Geologist, Mine Surveyor, Operational Management*



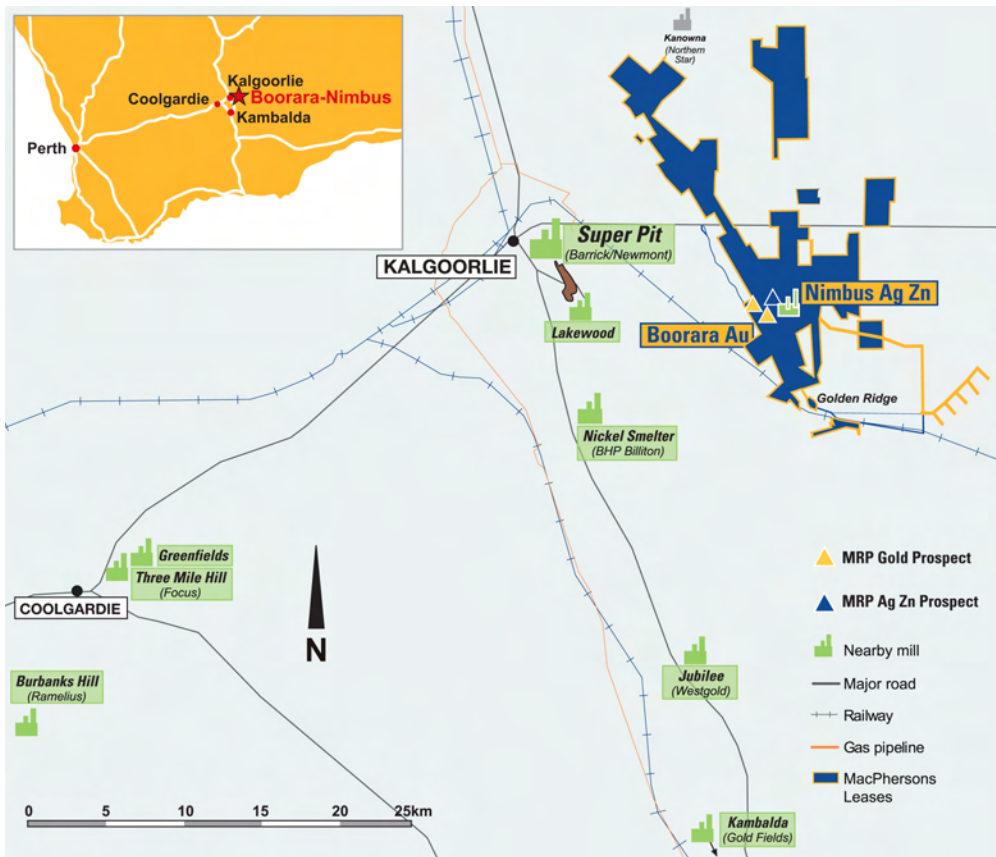
## Strong Register



# Prime Location – Mills, Services, Skills



MACPHERSONS



# 2017 Brings Renewed Focus on Gold



MACPHERSONS



# Good Neighbours



MACPHERSONS

MRP Boorara

KCGM Super Pit 20MOz

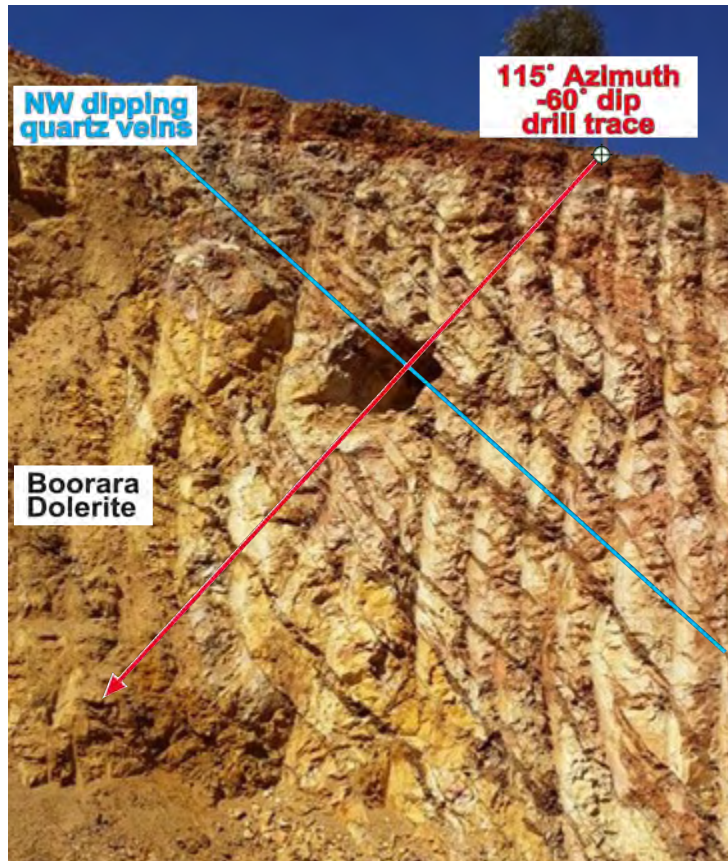
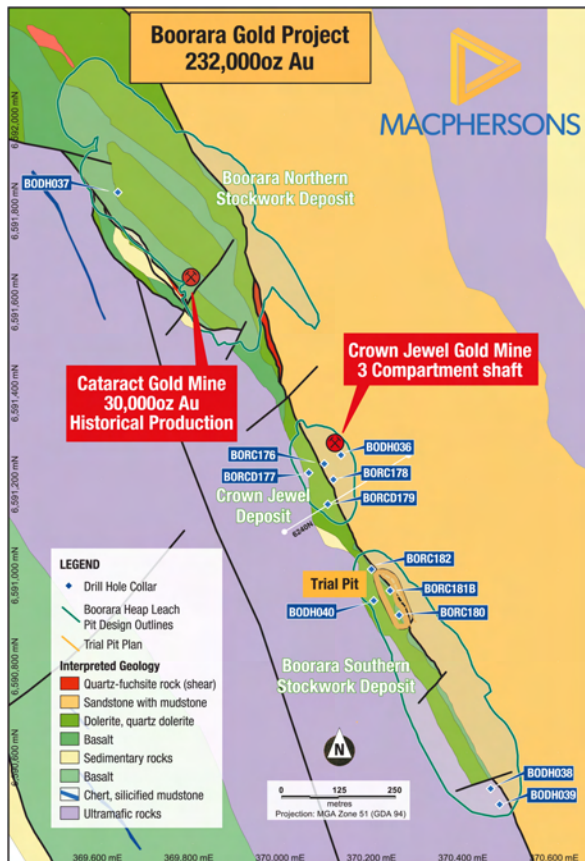
Mt Charlotte

*“gold mineralisation is like the six-million ounce Mt Charlotte gold deposit”*

# Stockwork Veinlets Mineralised



MACPHERSONS



Trial pit mined in October 2016 provided vital information on gold grade, recovery, interpretation

Diamond drilling/RC at 115 degrees in Southern zone started in Jan 2017

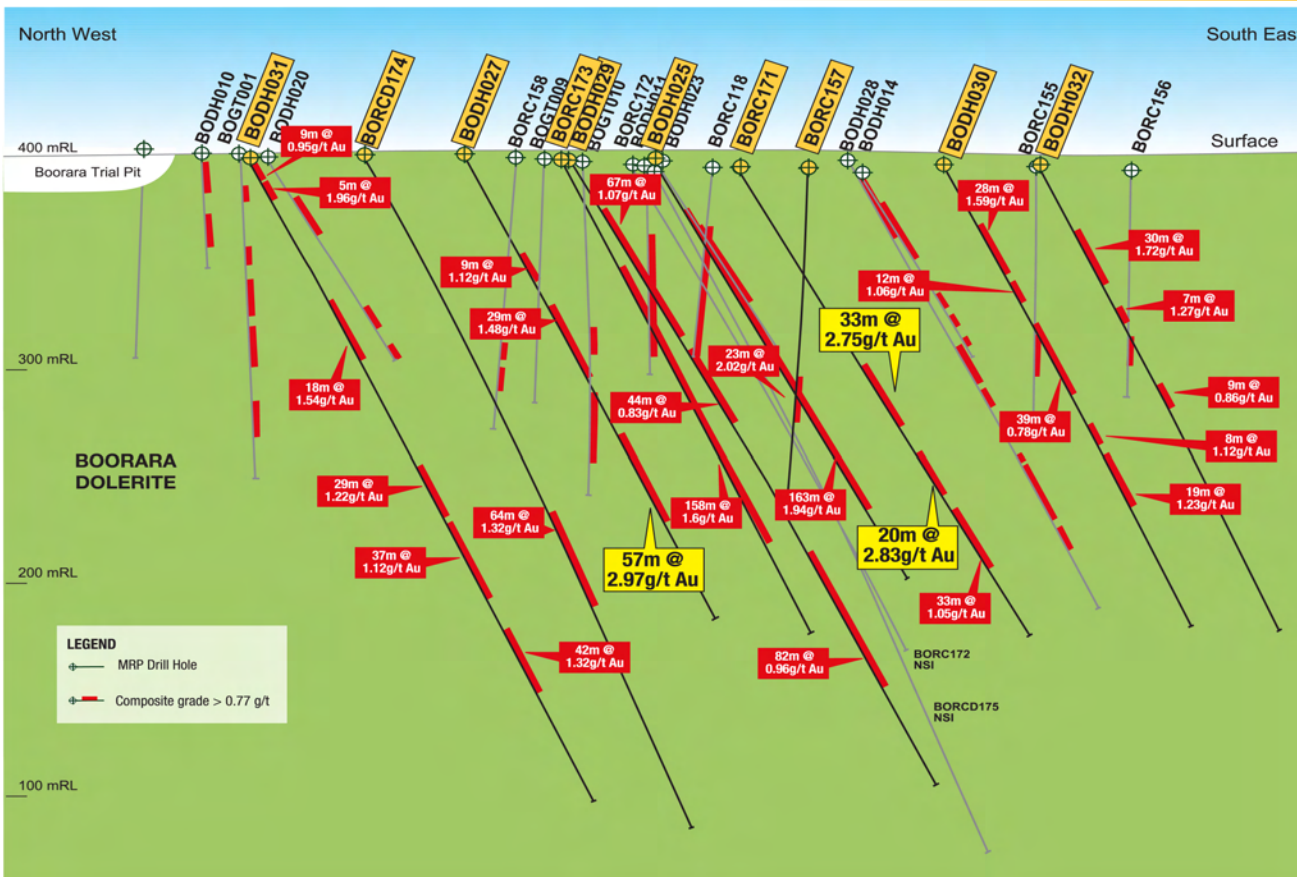
- 163m grading 1.94 g/t gold (cut to 24 g/t)
- 158 metres grading 1.6 g/t
- 57 metres grading 3 g/t
- 33 metres grading 2.75 g/t
- 20 metres grading 2.83 g/t



# Southern Stockwork Core Direction 115°



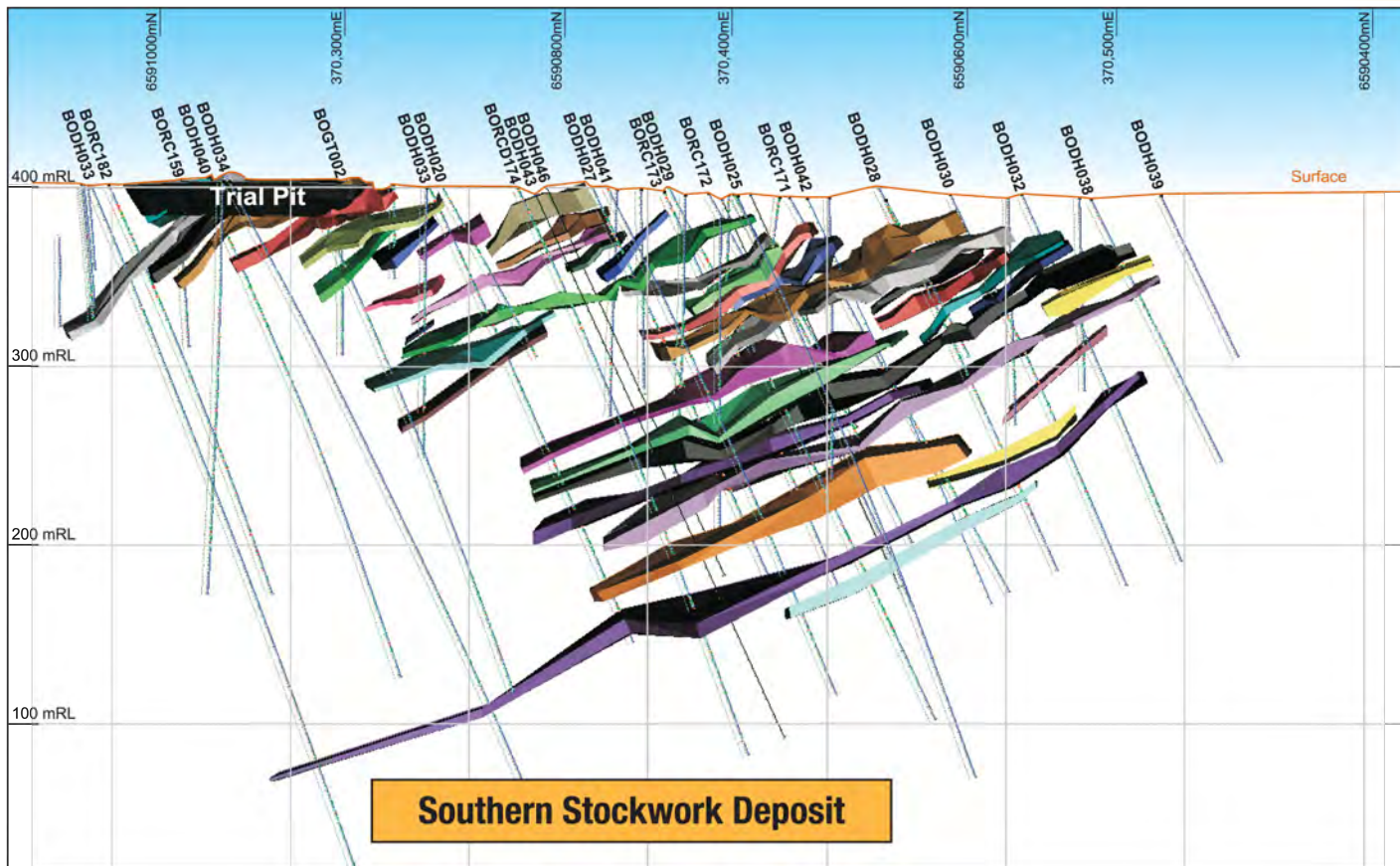
MACPHERSONS



# Southern Stockwork – Long Section



MACPHERSONS

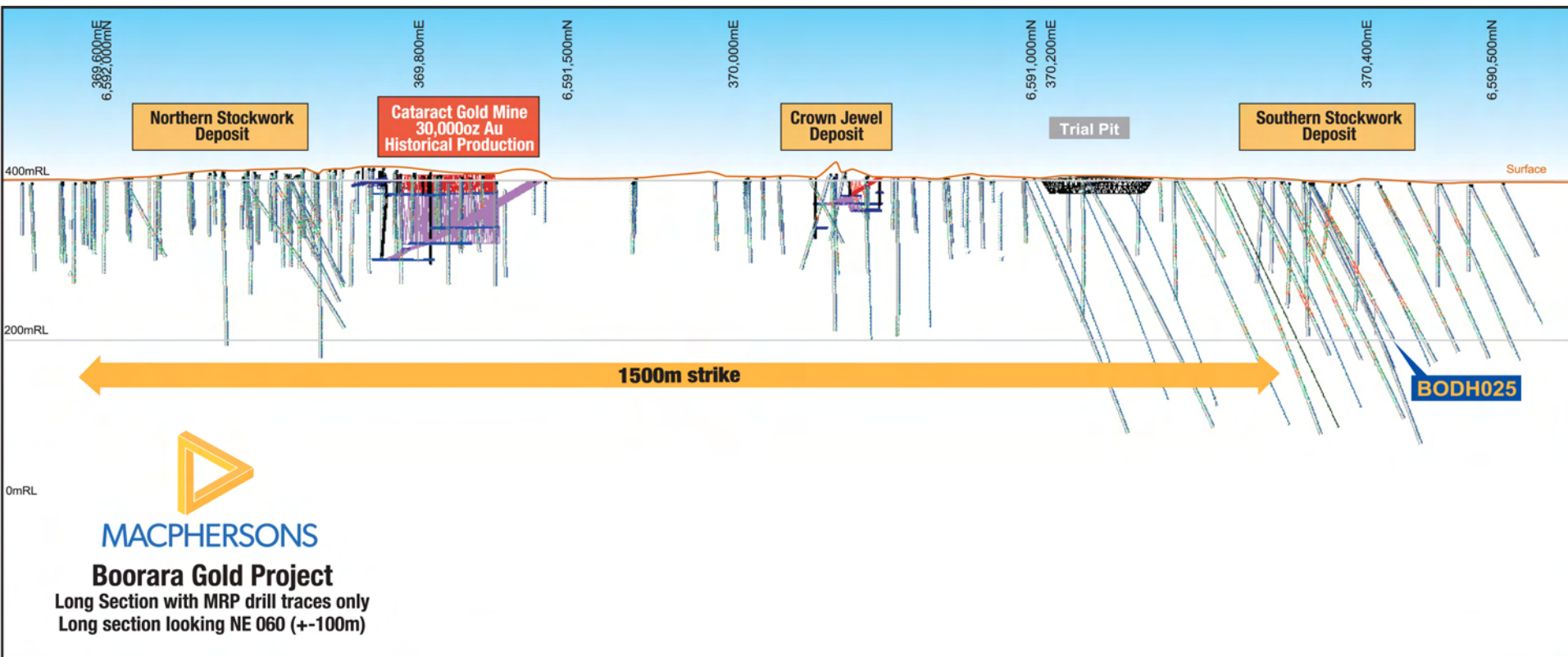


**Boorara Gold Project**  
Southern Stockwork Long Section  
Wireframes Mineralised  
Vein Arrays +1g/t  
Looking NE 060 +/- 80m

# Boorara Gold Project – Long Section



MACPHERSONS

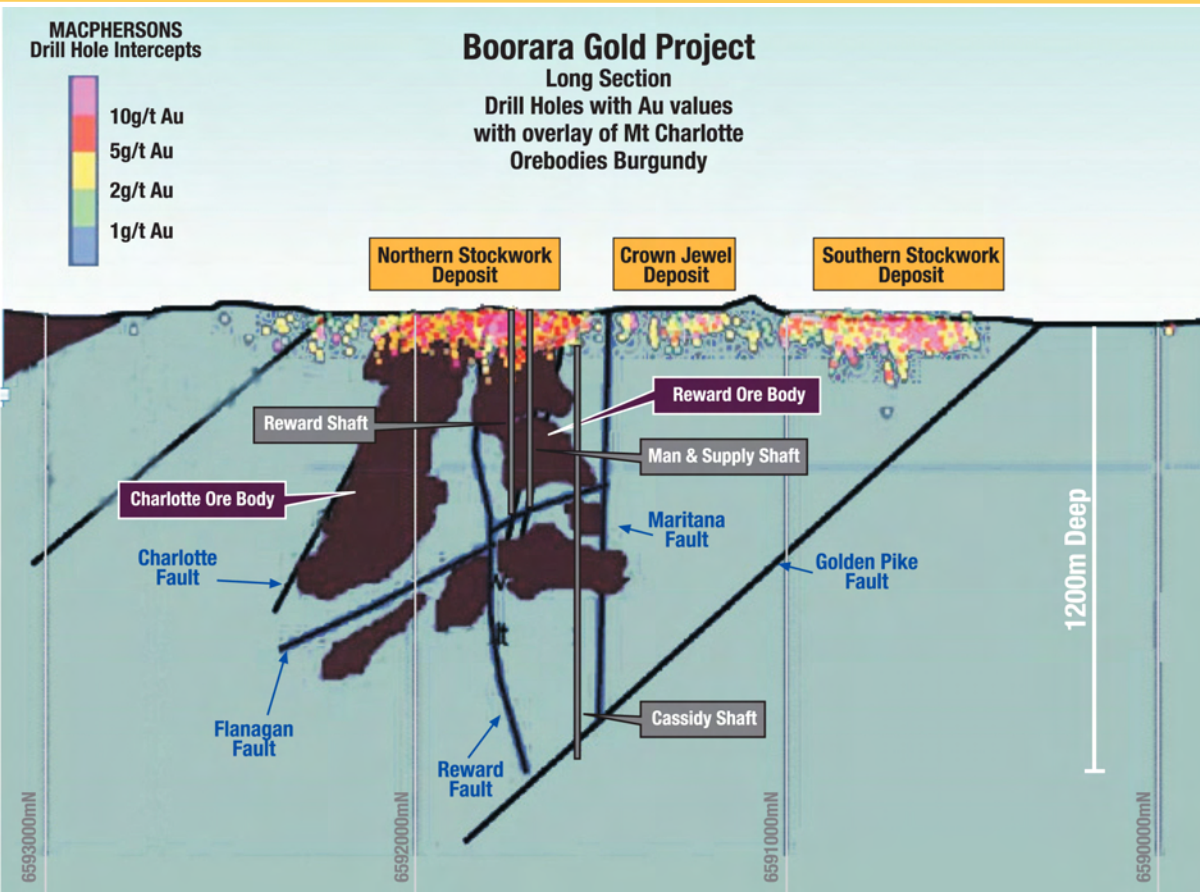


**Boorara Gold Project**  
Long Section with MRP drill traces only  
Long section looking NE 060 (+/-100m)

# Similar to Mt Charlotte part of Golden Mile



MACPHERSONS

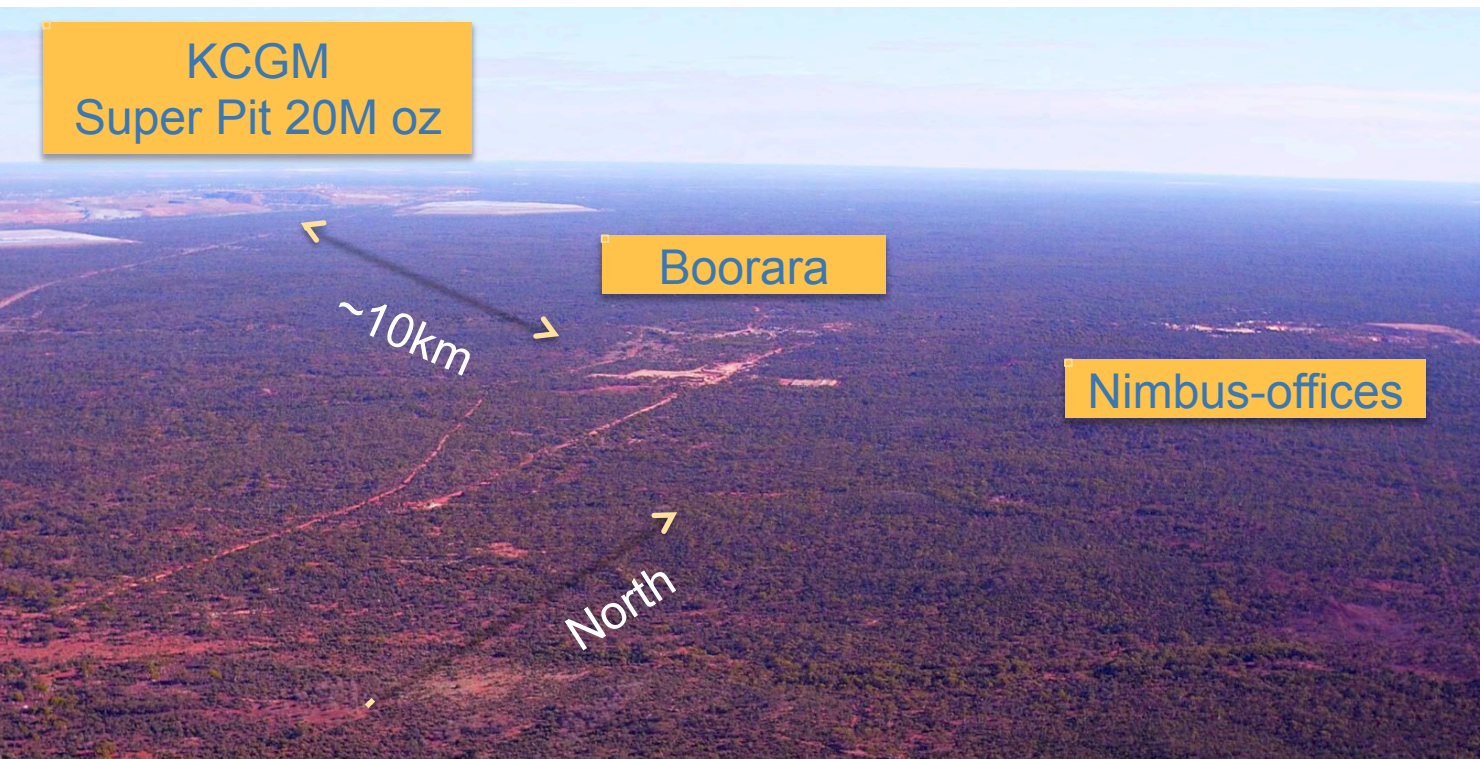


- Boorara gold mineralisation similar to the **six million ounce Mt Charlotte gold deposit** (part of the nearby Kalgoorlie Golden Mile 10 km west of Boorara).
- It took from discovery of gold near Mt Charlotte in 1893 to 1962 to start underground mining.
- It was in 1962 after a detailed evaluation by Western Mining Corporation Ltd (WMC) to identify a starter ore reserve of 2.97 Mt @ 4.9 g/t gold

# 20 km Strike Length of Exploration Leases



MACPHERSONS



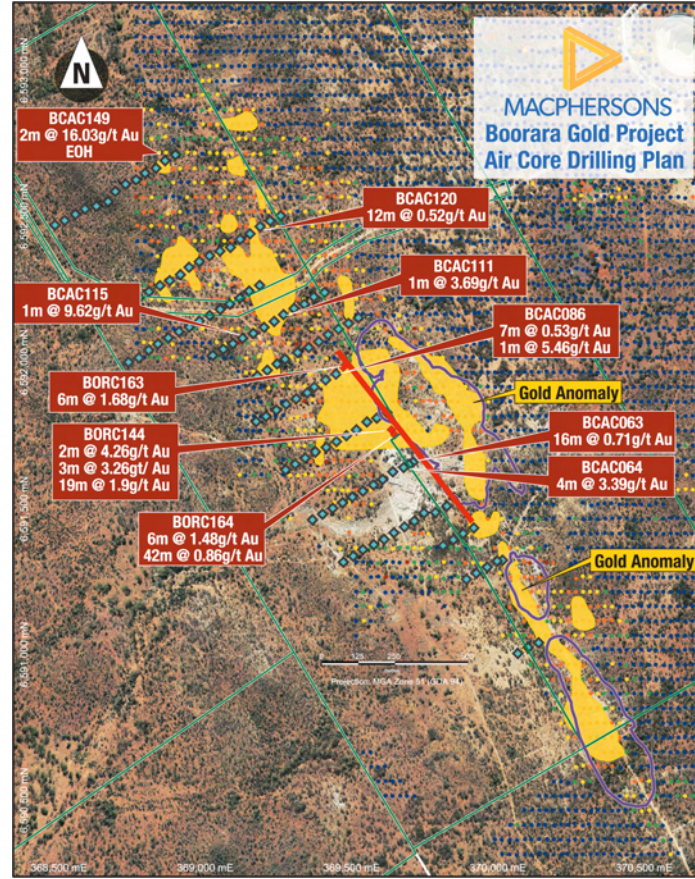
*“the golden mile provides all skills, equipment and power; and within proximity to four operating mills”*

# Boorara Exploration Upside



MACPHERSONS

- Large tenement package  
13,000 ha with numerous drill targets including geochemical anomalies to be tested
- Dolerite host mapped north of Boorara
- Western contact limited drill testing south of recently drilled BORC144 potential opportunity to expand existing resource
- Aircore drilling of geochemical anomalies +200ppb gold west and north of current Boorara pit designs



Multiple AC hits will be further drill tested including:

BCAC120 12m @ 0.52g/t Au

BCAC149 2m @ 16.03g/t Au EOH



MACPHERSONS

A large, textured gold nugget is the central focus of the slide, set against a dark, blurred background. The nugget has a rough, crystalline surface with various facets and highlights, giving it a three-dimensional appearance. The lighting is dramatic, with bright highlights on the upper and right sides of the nugget, while the lower and left sides are in shadow.

**Jeff Williams**  
**Managing Director**  
**MacPhersons Resources**

# Competent Person's Statement



The information in this report that relates to mineral resources and exploration results is based on information compiled by Andrew Pumphrey who is a Member of the Australian Institute of Geoscientists and is a Member of the Australasian Institute of Mining and Metallurgy. Andrew Pumphrey is a full time employee of Macphersons Resources Ltd and has sufficient experience which is relevant to the style of mineralisation and type of deposit under consideration and to the activity which he is undertaking to qualify as a Competent Person as defined in the 2012 edition of the “Australasian Code for Reporting of Exploration Results, Mineral Resources and Ore Reserves”. Mr Pumphrey has given his consent to the inclusion in this report of the matters based on the information in the form and context in which it appears.