

**Venus Metals**  
**Corporation Limited**  
ACN 123 250 582

**CORPORATE DIRECTORY**

**Mr Matthew Hogan**  
Non-Executive Chairman

**Mr Kumar Arunachalam**  
Chief Executive Officer

**Mr Terence Hogan**  
Non-Executive Director

**CAPITAL STRUCTURE**

Issued Shares (ASX: VMC):  
69,964,693

Issued Options (ASX: VMCOA):  
31,449,491

Market Cap: \$6.9 million

**CONTACT DETAILS**

Mezzanine Level  
BGC Centre,  
28 The Esplanade,  
Perth  
Western Australia, 6000

Tel: +61 (0) 8 9321 7541

Fax: +61 (0) 8 9486 9587

Email: [info@venusmetals.com.au](mailto:info@venusmetals.com.au)

[www.venusmetals.com.au](http://www.venusmetals.com.au)

**YOUANMI PROJECT:**  
**PINCHER WELL ZINC-COPPER PROSPECT**  
**PHASE 2 RC DRILLING COMMENCES ON STRONG IP**  
**ANOMALIES TO THE SOUTH OF HIGH GRADE ZINC**  
**MINERALISATION**

**HIGHLIGHTS**

- Phase 2 RC Drilling has commenced along two southern survey lines to test the recently discovered high chargeability IP anomalies at the Pincher Well Zinc-Copper Prospect (E57/1019) 600km north-northeast of Perth and 15km southwest of Youanmi Gold Mine in Western Australia.
- The recent IP surveying has confirmed the shallow 'up-dip' southern extensions of the North Dome high-grade zinc mineralisation (ASX release 27 April 2017).
- The chargeability recorded along line 6821500N is stronger than the previous IP survey results and the anomaly extends 400m to the south (Figure 1). The modelled anomaly remains OPEN and UNTESTED further to the south, potentially extending the target envelope of 1km strike and 250m width (ASX release 29 May 2017).

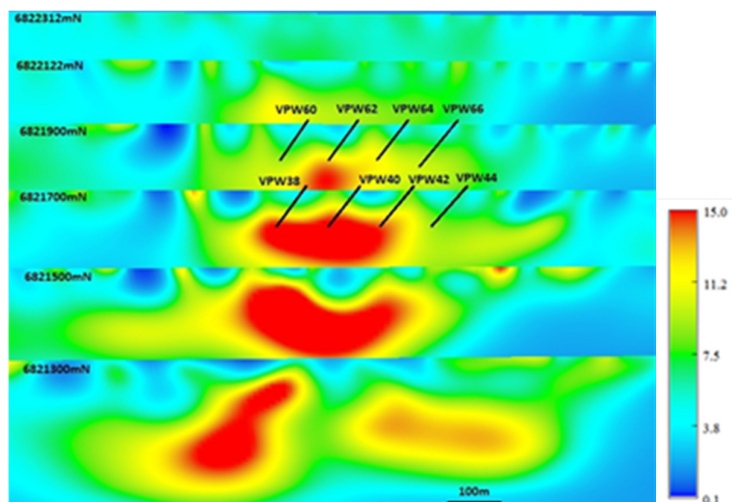


Figure 1. IP Chargeability Inversion Models of lines 6821700 mN (drill tested);  
6821500mN and 6821300mN (to be tested by current RC drilling)



#### **Exploration Targets**

The term 'Exploration Target' should not be misunderstood or misconstrued as an estimate of Mineral Resources and Reserves as defined by the JORC Code (2012), and therefore the terms have not been used in this context.

#### **Forward-Looking Statements**

This document may include forward-looking statements. Forward-looking statements include, but are not limited to, statements concerning Venus Metals Corporation Limited planned exploration program and other statements that are not historical facts. When used in this document, the words such as "could," "plan," "estimate," "expect," "intend," "may", "potential," "should," and similar expressions are forward-looking statements. Although Venus Metals Corporation Ltd believes that its expectations reflected in these forward-looking statements are reasonable, such statements involve risks and uncertainties and no assurance can be given that actual results will be consistent with these forward-looking statements.

#### **Competent Person's Statement**

The information in this report that relates to Exploration Results, Mineral Resources or Ore Reserves is based on information compiled by Mr T. Putt of Exploration & Mining Information Systems, who is a member of The Australian Institute of Geoscientists. Mr Putt has sufficient experience that is relevant to the style of mineralisation and type of deposit under consideration and to the activity that he is undertaking to qualify as a Competent Person as defined in the 2012 Edition of the Joint Ore Reserves Committee (JORC) Australasian Code for Reporting of Exploration Results, Mineral Resources and Ore Reserves. Mr Putt consents to the inclusion in the report of the matters based on his information in the form and context in which it appears.