



ASX Announcement

29 August 2017

**51.9 g/t over 1 metre
9.58 g/t over 1 metre
High Grade Hits at Crown Jewel**

- ▶ **Another three outstanding diamond drill hole gold results from 100% owned Boorara Gold Project some 10 kilometres east of Kalgoorlie:**

Crown Jewel Deposit

▪ BODH 048	6 - 17m	11m @	1.41 g/t
	164 - 165m	1m @	9.58 g/t
	173 - 174m	1m @	51.9 g/t
▪ BODH 049	228 - 229m	1m @	6.92 g/t

Southern Stockwork Deposit

▪ BODH 047	13 - 20m	7m @	3.06 g/t
Incl	13 - 14m	1m @	17.0 g/t
	184 - 190m	6m @	2.23 g/t
Incl	186 - 187m	1m @	11.5 g/t
	298 - 307m	9m @	2.7 g/t
Incl	306 - 307m	1m @	16.6 g/t

“Results from this program further confirm the potential at Boorara” stated Jeff Williams, Managing Director of MacPherson. “With these results defining the mineralisation at the Southern Stockworks, we are looking forward to completing an update of the current resource estimate on this project by the end of 2017”

MacPhersons Resources Limited (“the Company”) (ASX : MRP) is pleased to announce another excellent set of three (3) Diamond Drill (DH) results that have just been completed as part of the ongoing drilling program at the 100% owned Boorara Gold Project 10 kilometres east of Kalgoorlie, Western Australia. The total number of holes drilled at Boorara is now 41 for 11,556 metres (26 diamond holes (BODH) for 7,226 metres, 15 reverse circulation (RC) holes for 4,330 metres of which seven (7) had diamond tails. We believe we have discovered a significant gold system and a number of drill hole intercepts suggest there is at least two styles of gold mineralisation.

The Boorara Project contains over 1.5 kilometres of mineralisation striking north-west at 330 degrees. The project is divided into Southern Stockwork (SSW), Crown Jewel (CJ) and Northern Stockwork (NSW) deposits.

Your company has since confirmed an extension of the Boorara Southern Stock Work deposit at a vertical depth below 200 metres from the surface and some 500 metres along strike.

Located about one kilometre to the North West of BODH 025 (163m @ 4.29 g/t uncut) and BORC 173 (158m @ 1.6 g/t) is the historic Cataract Gold Mine (30,000 oz; 1897-1907) that is hosted within the Boorara dolerite. The deposit has two major stope geometries, one striking 040° dipping to the North West and the other striking 330° and dipping near vertical. The significance of these stope geometries is that structural controls on historically mined high-grade gold veins is the same as the NW dipping quartz vein arrays encountered in the current drilling program.

A recent reinterpretation of the geometry of mineralisation at Boorara is due to structural mapping and interpretation of the Boorara Gold Project. The new Boorara structural geological model has allowed MacPhersons to make a better estimate of the true gold grade and size of the existing Boorara resource based on an interpretation of mineralised NW-dipping quartz vein arrays. From the structural mapping and the quartz veins exposed within the trial pit completed in October 2016, the drill orientation must be 115 degrees.

The ongoing drilling strategy continued to test the geology model and scope out the extent of mineralisation associated with the two styles of gold mineralisation:

- Dolerite hosted NW dipping quartz vein arrays with associated weak to strong pervasive hematite alteration, iron carbonate alteration, with >1% pyrite and >1% arsenopyrite mineralisation, and
- High grade narrow quartz vein gold mineralisation with >1% pyrite and >1% arsenopyrite.

Significant high grade gold mineralisation intersected at Crown Jewel and north of the SSW Trial Pit

- BODH 033 (452-453m) 1m @ 10.25 g/t with visible gold
- BORCD 184 (200-201m) 1m @ 105 g/t
- BORCD 185 (173-174m) 1m @ 8.33 g/t
- BODH 044 (211-212m) 1m @ 6.74 g/t, (307-308m) 1m @ 5.83 g/t,
- BODH 048 (164-165m) 1m @ 9.58 g/t, (173-174) 1m @ 51.9 g/t
- BODH 049 (228-229m) 1m @ 6.92 g/t

All the above holes have all intercepted high grade gold mineralisation that is distinctly different to the quartz vein arrays and appear to be quartz veins associated with faults. Interpretation of these high grade results is currently ongoing. This new high grade gold mineralisation is potentially a significant host for future gold mineralisation and will be targeted by future diamond drilling.

Diamond drilling has continued at Boorara with a three further diamond holes (BODH047-049) completed. The focus of drilling has been strike and depth extensions at Southern Stockwork and further framework drilling at Crown Jewel to better understand the structural and lithological controls at the deposit. Figure 1 highlights the potential 1,500 metre strike length of the Boorara system.

Gold mineralisation is hosted in a series of stacked quartz vein arrays that dip at 40-45° to the North West. The true thickness of the arrays is up to 50 metres vertical that are hosted within the quartz dolerite which dips at 73° to the north east. The mineralised dolerite has a true width of up to 40 metres based on a review of all the historic drilling and MRP drilling. Within the mineralised Boorara dolerite high grade localised ore shoots consist of vein arrays up to 20 metres in width. The increased width of the mineralised dolerite indicates that this is potentially a larger mineralised system.

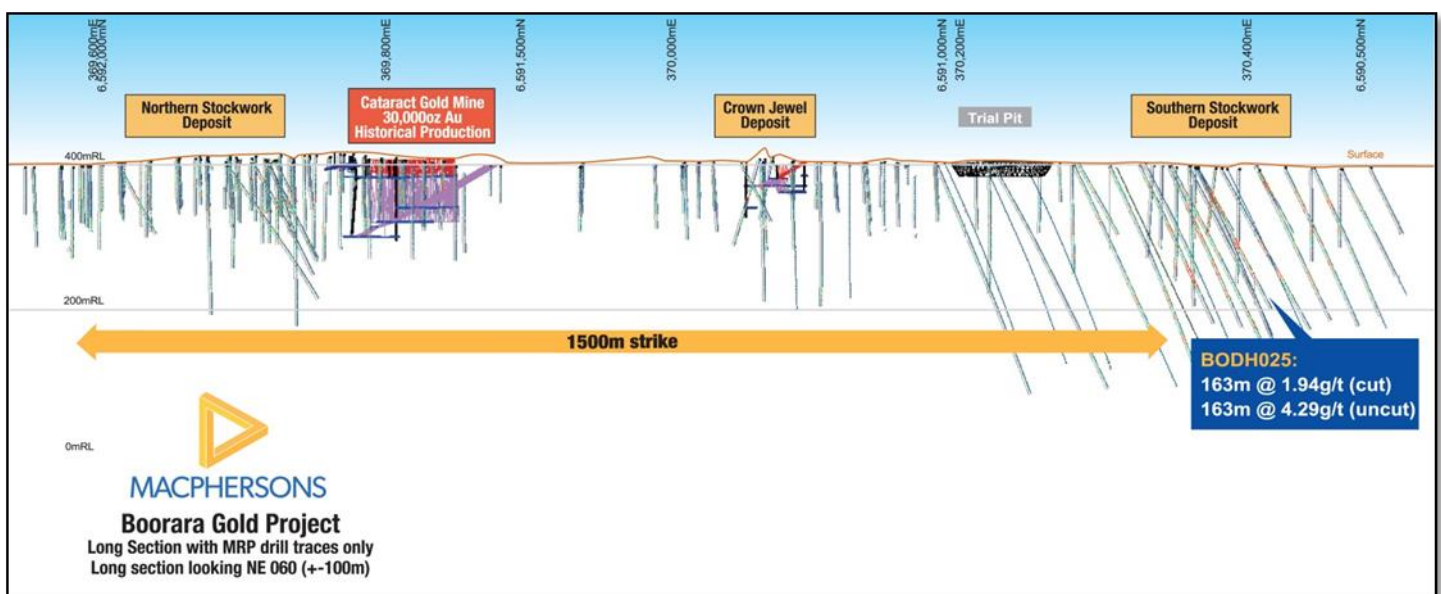


Figure 1: Boorara Gold Project long section with current drilling.

Southern Stockwork Drilling

BODH 047 was drilled 30m grid north of previously drilled BORCD 174, this hole has been drilled on a 115° azimuth.

Results from BODH 047 include:

▪ BODH 047	13 - 20m	7m	@	3.06 g/t
Incl	13 - 14m	1m	@	17.0 g/t
	70 - 114m	44m	@	0.76 g/t
	167 - 175m	8m	@	0.86 g/t
	184 - 190m	6m	@	2.23 g/t
Incl	186 - 187m	1m	@	11.5 g/t
	298 - 307m	9m	@	2.7 g/t
Incl	306 - 307m	1m	@	16.6 g/t

Crown Jewel Drilling

Recently completed diamond drill holes BODH 048 and 049 have continued to intersect significant high grade gold mineralisation at the Crown Jewel deposit. These intersections highlight the potential of the historic Crown Jewel gold mine to be a significant new high grade gold discovery at Boorara. Strike and depth extensions of these high-grade gold intersections will be the future focus of drilling at Crown Jewel.

The high-grade gold mineralisation intersected in BODH 48 & 49 is located 150 metres south of the three compartment Crown Jewel underground gold mine shaft. The Crown Jewel underground mine was worked to only 80 metres vertical depth, it is highly likely the orebody was offset by a late fault and could not be located underground therefore mining ceased. Recent drilling that MacPhersons has undertaken and trial pit mapping has revealed late faults that have offset the quartz dolerite and gold mineralisation. More drilling is required to understand the Crown Jewel orebody as significant structural faulting is evident in the area.

- BODH 048 is situated 10m grid east of recently drilled BORCD 184 (1m @ 105 /t)
- BODH 049 is situated 20m grid north of recently drilled BORCD 184 (1m @ 105 g/t)

Significant Crown Jewel composite intersections from BODH 048 & 049 are below:

▪ BODH 048	6 - 17m	11m	@	1.41 g/t
	115 - 120m	5m	@	0.73 g/t
	131 - 134m	3m	@	0.93 g/t
	164 - 165m	1m	@	9.58 g/t
	173 - 174m	1m	@	51.9 g/t
▪ BODH 049	35 - 40m	5m	@	0.89 g/t
	78 - 79m	1m	@	3.06 g/t
	96 - 97m	1m	@	2.53 g/t
	221 - 234m	13m	@	1.14 g/t
	incl 228 – 229m	1m	@	6.92 g/t

Current drilling is down the dip of the dolerite unit at Crown Jewel which is a shallower dip than at the Southern Stockwork to the south. The current drill azimuth of 060° will help to resolve the structural geology whilst still intersecting quartz veins.

The one metre results of drill holes BODH 047, 048 and 049 can be found in a table as Appendix 1.

Drill Progress Onsite

Follow up diamond drilling has been completed at Southern Stockwork and Crown Jewel and we await final results :

- BODH 050 - Drilled 20 metres grid south of BORCD 184 at 060° azimuth
- BODH 051 - Drilled 20 metres grid north of BODH 047 at 115° azimuth.
- BODH 052 - Drilled 20 metres grid west of BODH 042 at 115° azimuth

The MRP future drill strategy is to drill holes on two drill azimuths, a 115° azimuth to accurately estimate the gold grade of gold mineralisation at Boorara and a 060° azimuth to determine true width of gold mineralisation. The 060° azimuth will also intersect the Western and Eastern contact mineralisation.

Structural Understanding

A re-logging program has been undertaken on all MRP Boorara diamond drill hole core and RC drill chips at the Southern Stockwork and Crown Jewel areas. Key outcomes have been previously unrecognised lithological and structural complexity with cross faulting resulting in movement of mineralised ore blocks in the order of 10's of metres horizontally and vertically. Previously unrecognised ultramafic and sediment lithologies have been identified adjacent to the Boorara dolerite. The Boorara dolerite can be divided into up to 7 individual units with the quartz granophyric unit being unit 5. It is expected that future diamond drill holes will enable faulting to be better understood. The Boorara faulting is not dissimilar to that seen at the Mt Charlotte gold mine at Kalgoorlie (see figures 2 & 4 below) note the scale the Reward quartz vein array orebody that has a strike length of approximately 150 metres on the three level. Although the Mt Charlotte orebody has a short strike length it extends vertically for over 1200 metres depth and again faulting has resulted in the orebodies being moved considerable distances (see figures 2 & 4). The iron enrichment present within the Boorara quartz dolerite provides an oxidised chemical composition favourable to wall rock reaction with reduced gold fluids, this is a well-known host rock setting for major gold deposits in the Eastern Goldfields such as Mt Charlotte (6 Moz) and Darlot-Centenary (3.2 Moz). Reverse fault controlled quartz veins are interpreted for Boorara which is similar to the sub-horizontal quartz veins that are controlled by reverse faults at the Darlot-Centenary gold deposit (3.2 Moz) (see figure 7).

The Boorara Southern Stockwork gold mineralisation like Mt Charlotte (see figures 2 & 4) consists of irregular shaped pipe-like quartz vein arrays that are hosted in quartz dolerite that are structurally complex and require close spaced systematic drilling to define (see figure 6).

Structural logging and measurements of quartz veins taken from current diamond holes and previous MRP drilled holes has determined three dominant quartz vein geometries;

1. Striking 020° and dipping 48° west
2. Striking 060° and dipping 40° north west
3. Striking 100° and dipping 43° north

Mt Charlotte History

The Mt Charlotte mine is located close to the original gold discovery at Kalgoorlie by Paddy Hannan in June 1893 and it is most probable that Hannan's original gold originated from the Mt Charlotte orebody (Haycraft 1979). Mining by open methods at Mt Charlotte from 1893 -1916 produced 71,000 ounces of gold and then mining ceased shortly after reaching the pyritic ores.

It was in 1962 after detailed evaluation by Western Mining Corporation Ltd (WMC) and its associated company Gold Mines of Kalgoorlie (Australia) Limited that an ore reserve of 2.97 Mt @ 4.9 g/t and a large scale underground mining operation was considered viable (Haycraft 1979). The work in 1962 involved dewatering the mine and structural mapping that identified the three principle sets of veins within the quartz dolerite host. Based on this work it was determined by WMC that to estimate the true grade of the orebody close spaced drilling was required using a drill azimuth of 156.5° to intersect all 3 principle vein sets. This strategy has proved to be the only method of accurately determining the grade of the Mt Charlotte orebody to this day. Western Mining Corporation Ltd recognised the

importance of drilling perpendicular to the NW dipping quartz veins at Mt Charlotte to better estimate gold grade; this same strategy has been adopted by MacPhersons at Boorara.

It took from discovery of gold near Mt Charlotte in 1893 to 1962 - over 69 years for the Mt Charlotte orebody to be recognised and its gold endowment now is 6 million ounces.

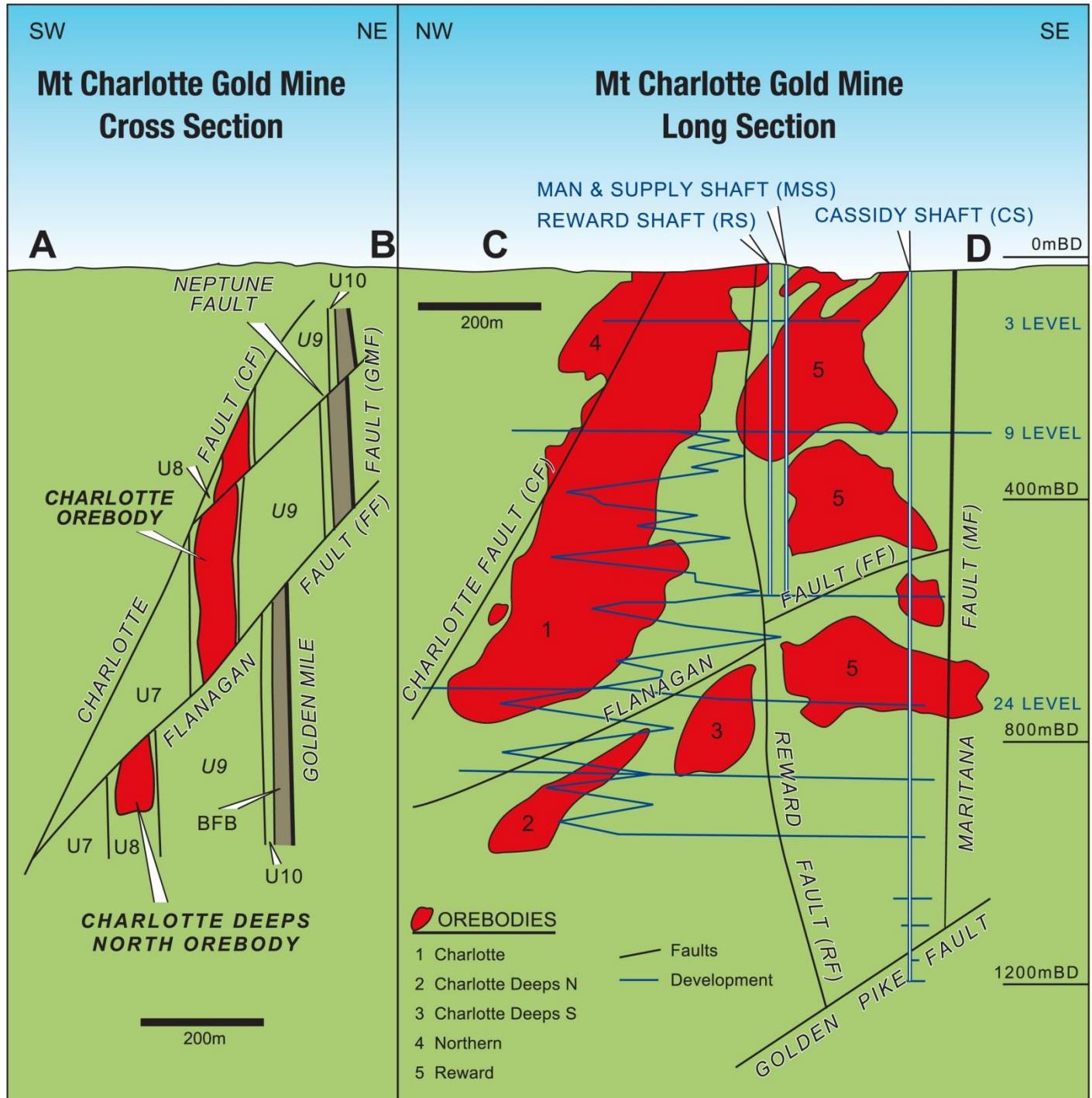


Figure 2: Mt Charlotte Cross Section and Long Section (after Clout, Cleghorn & Eaton 1990) to illustrate the depth extent of the Mt Charlotte mine compared to strike extent.

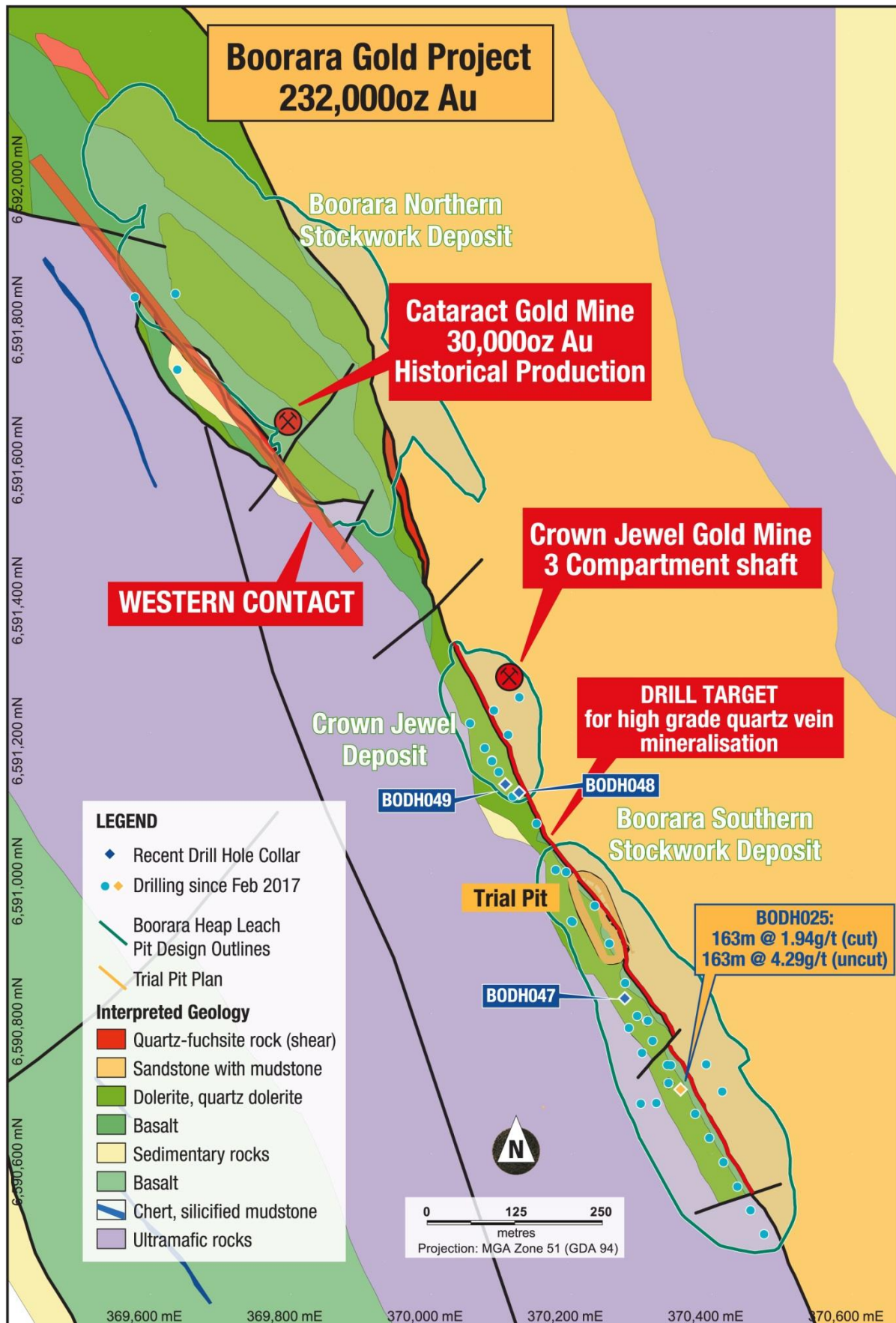


Figure 3: Plan view of Boorara drill holes with interpreted geology.

Mt Charlotte Gold Mine - Plan View

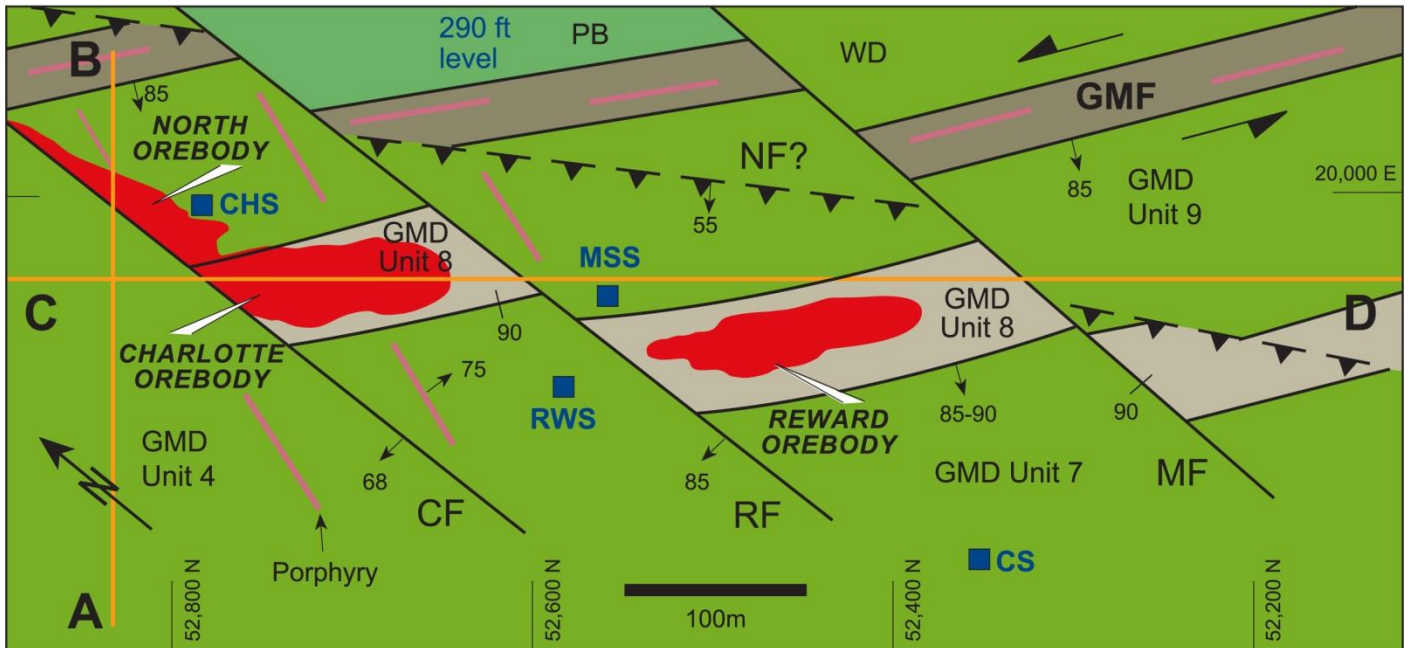


Figure 4: Mt Charlotte 3 level structural plan (Mueller 2015) showing the GMF (Golden Mile Fault) the quartz dolerite host (GMD unit 8), Golden Mile Dolerite (GMD units 4, 7, 8 & 9), Paringa Basalt (PB) and the Williamstown Dolerite (WD). The quartz vein array orebodies are the Charlotte (COB), Reward (ROB) and Northern (NOB). The Cassidy Shaft is shown along with the Charlotte Shaft (CHS), Reward Shaft (RWS) and the Man and Supply Shaft (MSS). Porphyry dykes and shown as red lines. Faults are shown as black lines including the Charlotte Fault (CF), Reward Fault (RF) and Maritana Fault (MF).



Figure 5: Diamond Drill core BODH 047 306- 307m: 1m @ 16.6 g/t .

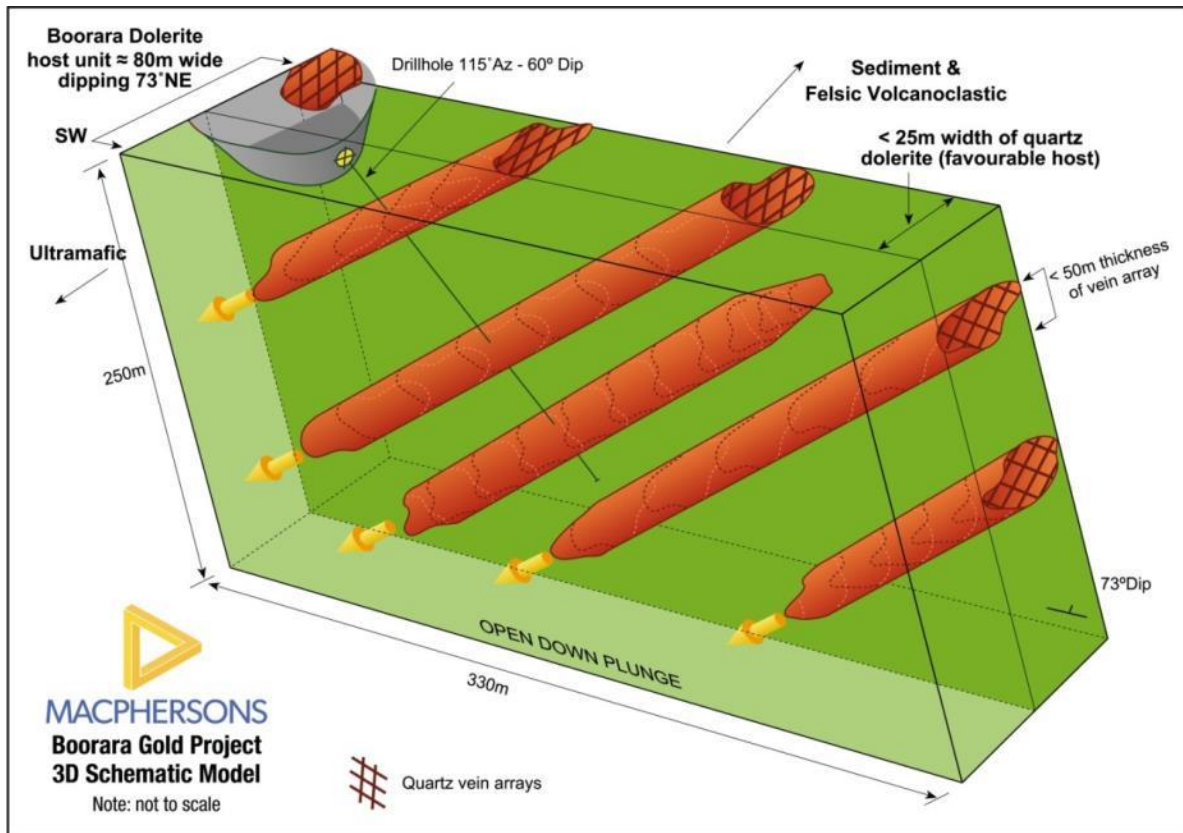


Figure 6: Boorara geological model schematic showing quartz vein arrays and current drill azimuth

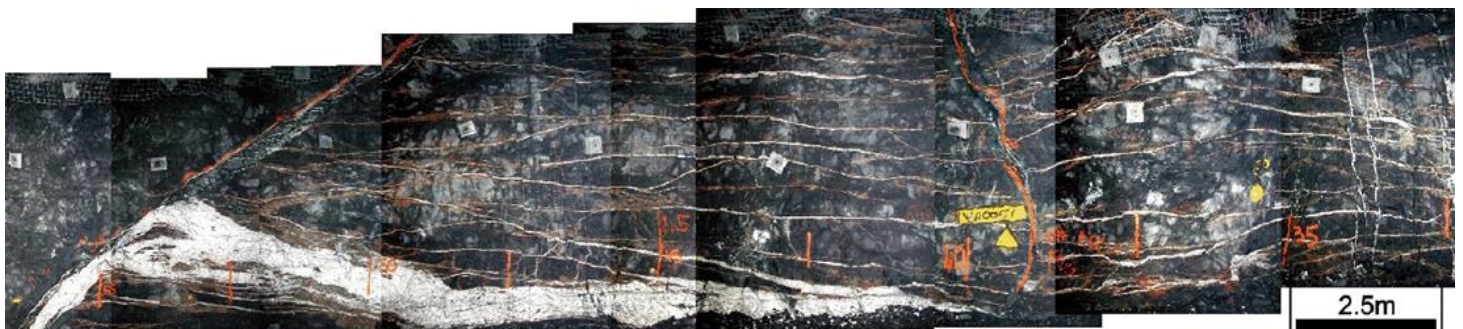


Figure 7: Darlot Centenary orebody 1100 level underground face photo mosaic showing sub-horizontal moderately dipping veins (Kenworthy, Hagemann 2007)

For further information please contact:

Jeff Williams
 Managing Director
 +61 418 594 324

OR

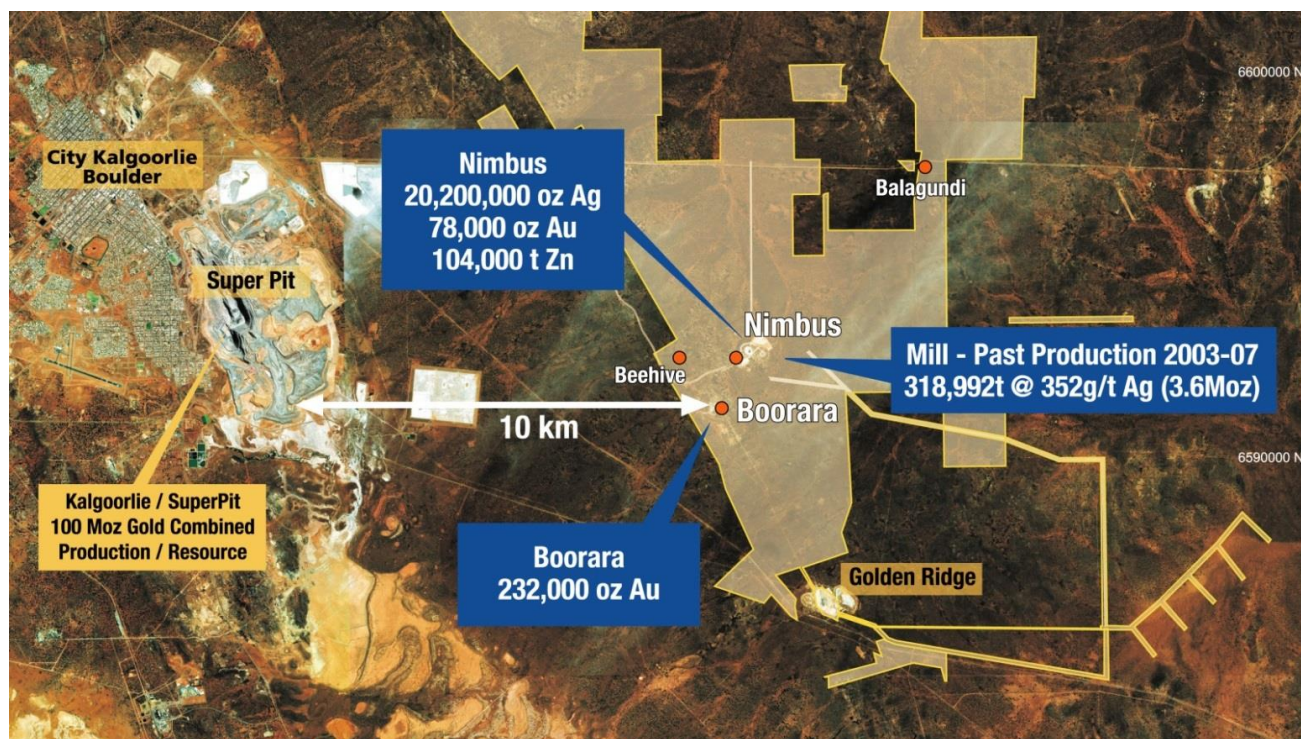
Andrew Pumphrey
 General Manager
 +61 419 965 976

About MacPhersons

MacPhersons Resources Ltd (MRP) is a Western Australian resource company with a number of advanced gold, silver and zinc projects.

The company's long term objective is the development of its existing assets and unlocking the full potential of its 100% owned highly prospective Boorara and Nimbus projects.

For more information on MacPhersons Resources Limited and to subscribe for regular updates, please visit our website at: www.mrpresources.com.au or contact our Kalgoorlie office via email on info@mrpresources.com.au or telephonically on 08 9068 1300



Competent Person’s Statement

The information in this report that relates to exploration results is based on information compiled by Andrew Pumphrey who is a Member of the Australian Institute of Geoscientists and is a Member of the Australasian Institute of Mining and Metallurgy. Andrew Pumphrey is a full time employee of Macphersons Resources Ltd and has sufficient experience which is relevant to the style of mineralisation and type of deposit under consideration and to the activity which he is undertaking to qualify as a Competent Person as defined in the 2012 edition of the “Australasian Code for Reporting of Exploration Results, Mineral Resources and Ore Reserves”. Mr Pumphrey has given his consent to the inclusion in this report of the matters based on the information in the form and context in which it appears.

JORC Code, 2012 Edition – Table 1 Report

Section 1 Sampling Techniques and Data

(Criteria in this section apply to all succeeding sections.)

CRITERIA	JORC CODE EXPLANATION	COMMENTARY
Sampling techniques	<i>Nature and quality of sampling (e.g. cut channels, random chips, or specific specialised industry standard measurement tools appropriate to the minerals under investigation, such as down hole gamma sondes, or handheld XRF instruments, etc). These examples should not be taken as limiting the broad meaning of sampling.</i>	<p>The Boorara Deposit three diamond holes (BODH 047, 048, 049 -891.89m HQ), azimuth 115° & 060° and dipping -59° to -62°.</p> <p>The RC samples are collected from the drill rig cyclone in a green plastic bag in 1m intervals and are laid out in rows of either 20 or 40 samples. Four RC samples were sampled as 0.75m lengths. A 2-4kg representative sample is split via the rig mounted cone splitter and placed on top of the green plastic for that metre interval.</p> <p>Diamond drilling completed using one metre sampling lengths, core half cut adjacent to bottom of hole orientation line.</p>
	<i>Include reference to measures taken to ensure sample representivity and the appropriate calibration of any measurement tools or systems used.</i>	<p>All sampling is undertaken using MacPhersons Resources sampling procedures and QAQC in line with industry best practise which includes certified standards on average every 30 samples.</p> <p>The RC drill rig provides a sample at the end of each metre of drilling. A 2-4 kg sample is collected from the drill rig via a cone splitter which is representative of that metre.</p> <p>HQ diamond core was half cut to produce a 2-4 kg sample for analysis.</p>
	<i>Aspects of the determination of mineralisation that are Material to the Public Report.</i>	<p>Historic hole collars have been recovered where possible and surveyed by a licenced surveyor using a DGPS (0.01). Historic holes were down hole surveyed where possible for deviation by north seeking gyroscope method by local contactor ABIMS.</p>
	<i>In cases where 'industry standard' work has been done this would be relatively simple (e.g. 'reverse circulation drilling was used to obtain 1 m samples from which 3 kg was pulverised to produce a 30 g charge for fire assay'). In other cases more explanation may be required, such as where there is coarse gold that has inherent sampling problems. Unusual commodities or mineralisation types (e.g. submarine nodules) may warrant disclosure of detailed information.</i>	<p>The RC one metre sample intervals were collected with a 2-4 kg representative sample despatched to the laboratory for gold analysis.</p> <p>The diamond half core sample intervals were typically a 2-4 kg representative sample despatched to the laboratory for gold analysis.</p> <p>All analysis was by 50g fire assay with AAS finish with the exception of cases where visible gold has been observed or a fire assay grade has exceeded 100 g/t or coarse gold is suspected then a screen fire assay (Au-SCR22AA) has been undertaken on those samples and those results reported instead of the fire assay result.</p>

CRITERIA	JORC CODE EXPLANATION	COMMENTARY
Drilling techniques	<i>Drill type (e.g. core, reverse circulation, open-hole hammer, rotary air blast, auger, Bangka, sonic, etc) and details (e.g. core diameter, triple or standard tube, depth of diamond tails, face-sampling bit or other type, whether core is oriented and if so, by what method, etc).</i>	<p>The RC drilling was undertaken using a face sampling percussion hammer using 137mm drill bits.</p> <p>The diamond drilling was undertaken using HQ3 (triple tube) and HQ3 (standard tube) techniques.</p>
Drill sample recovery	<i>Method of recording and assessing core and chip sample recoveries and results assessed.</i>	<p>Each metre of RC sample is checked and an estimate of sample recovery is made. For this program, greater than 80% of samples had a recovery of 70% or higher. Sample weights reported by laboratory can also give an indication of recoveries</p> <p>Drill core was measured and compared to drilled intervals, and recorded as a percentage recovery. Recovery in oxidised rock can be reasonable whereas recovery in fresh rock is excellent.</p>
	<i>Measures taken to maximise sample recovery and ensure representative nature of the samples.</i>	<p>Drillers experience is important. Steady drilling, using modern well maintained drilling equipment, regular cleaning of cyclone and splitter, pausing the drilling at each metre to allow sample to pass through drill string and reducing sample loss. Using a RC rig equipped with auxiliary and booster compressors is critical to maintaining good RC sample recovery.</p> <p>Using professional and competent core drilling contractor minimises issues with sample recoveries through the use of appropriate drilling equipment techniques and drilling fluids suited to the particular ground conditions.</p>
	<i>Whether a relationship exists between sample recovery and grade and whether sample bias may have occurred due to preferential loss/gain of fine/coarse material.</i>	<p>RC sample recoveries from the mineralised zones are generally high although some of the weathered material is lost in drilling (dust) and some natural voids do exist. High water flows were encountered in all holes from 180m downhole. No sample was lost from 2-4 kg split from cyclone that was submitted for analysis, some loss of sample occurred from large green bags and some bias may have occurred to that sample as water was flowing from sample bag – this sample has not been analysed and therefore will not affect results reported in this release.</p> <p>The core sample recovery in the transitional and fresh rock zones is very high and no significant bias is expected. Recoveries in oxidised rock were lower.</p> <p>Although no exhaustive studies have been undertaken, no significant bias is expected, and any potential bias is not considered material at this stage of resource development.</p>

CRITERIA	JORC CODE EXPLANATION	COMMENTARY
Logging	<i>Whether core and chip samples have been geologically and geotechnically logged to a level of detail to support appropriate Mineral Resource estimation, mining studies and metallurgical studies.</i>	<p>Each RC metre drilled underwent detailed logging through the entire hole with record kept of colour, lithology, degree of oxidation, and type and intensity of alteration veining and sulphide content.</p> <p>Diamond core metres underwent detailed logging through the entire hole with record kept of colour, lithology, degree of oxidation, and type and intensity of alteration, veining and sulphide content. Structural, density and geotechnical data is also collected on drill core.</p>
	<i>Whether logging is qualitative or quantitative in nature. Core (or costean, channel, etc) photography.</i>	<p>All logging is qualitative in nature and included records of lithology, oxidation state and colour with estimates of intensity of mineralisation, alteration and veining. Wet and dry photographs were completed on the core.</p>
	<i>The total length and percentage of the relevant intersections logged.</i>	<p>All drill holes were geologically logged in full (100%).</p>
Sub-sampling techniques and sample preparation	<i>If core, whether cut or sawn and whether quarter, half or all core taken.</i>	<p>Core was half cut with a diamond saw with the same half always sampled and the other half retained in core trays.</p> <p>In some instances oxidised and non-competent clay zones are carefully split in half using sampling wedge and sampled as half core.</p>
	<i>If non-core, whether riffled, tube sampled, rotary split, etc and whether sampled wet or dry.</i>	<p>All RC sub-samples are collected via a cone splitter system mounted on the drill rig. An estimated 30% of samples were moist to wet in nature that passed through the cyclone – splitter system.</p>
	<i>For all sample types, the nature, quality and appropriateness of the sample preparation technique.</i>	<p>All samples were analysed via a 50 gram fire assay. Following that analysis in cases where visible gold has been observed or a fire assay grade has exceeded 100 g/t or coarse gold is suspected then a screen fire assay (Au-SCR22AA) has been undertaken on those samples and those results reported instead of the fire assay result.</p> <p>Sample preparation and analysis were completed by ALS in Kalgoorlie. When received, samples are processed by code PREP-31 - logged in tracking system and bar code attached, wet samples dried through ovens, fine crushing to better than 70% passing 2mm, split sample using riffle splitter, split of up to 1000g pulverised to >85% sample passing 75um.</p>

CRITERIA	JORC CODE EXPLANATION	COMMENTARY
	<p><i>Quality control procedures adopted for all sub-sampling stages to maximise representivity of samples.</i></p>	<p>All sampling equipment and sample bags are kept clean at all times.</p> <p>The RC drill rig mounted cone splitter is adjusted to ensure that the 1m split sample weighs on average between 2-4kg. The cone splitter is cleaned using an air nozzle after every drill rod – 6m.</p> <p>MacPhersons Resources sampling procedures and QAQC is used to maximise representivity of samples.</p>
	<p><i>Measures taken to ensure that the sampling is representative of the in situ material collected, including for instance results for field duplicate/second-half sampling.</i></p>	<p>For drill core, the entire core is sampled at one metre intervals to ensure that samples are representative of the entire in-situ rock being tested. The laboratory ensures that the entire sample submitted is crushed and split appropriately to provide a representative sub-sample.</p> <p>No duplicate samples are taken from the core</p>
	<p><i>Whether sample sizes are appropriate to the grain size of the material being sampled.</i></p>	<p>The sample sizes (0.5 kg to 4 kg) are considered appropriate for the style of mineralisation at Boorara.</p> <p>Half cut HQ diamond core samples over 1m length (normally at the end of hole) were up to 4kg.</p>
<p>Quality of assay data and laboratory tests</p>	<p><i>The nature, quality and appropriateness of the assaying and laboratory procedures used and whether the technique is considered partial or total.</i></p>	<p>The nature, quality and appropriateness of the assaying and laboratory procedures are industry standard for Archaean mesothermal lode gold deposits. The fire assay technique will result in a total assay result. In cases where visible gold has be observed or a fire assay grade has exceeded 100 g/t or coarse gold is suspected then a screen fire assay (Au-SCR22AA) has been undertaken on those samples and reported instead of the fire assay result.</p>
	<p><i>For geophysical tools, spectrometers, handheld XRF instruments, etc, the parameters used in determining the analysis including instrument make and model, reading times, calibrations factors applied and their derivation, etc.</i></p>	<p>None of these tools are used</p>
	<p><i>Nature of quality control procedures adopted (e.g. standards, blanks, duplicates, external laboratory checks) and whether acceptable levels of accuracy (i.e. lack of bias) and precision have been established.</i></p>	<p>Certified Reference Materials (standards) are purchased from an independent supplier of such materials. Blanks are made up from samples previously collected from other drill programs at Boorara –Nimbus that have analysed as less than detection Au values.</p> <p>A standard sample followed by a blank sample are inserted every 30th sample.</p> <p>Evaluation of the Macphersons submitted standards and blanks analysis results indicates that assaying is accurate and without significant drift.</p>

CRITERIA	JORC CODE EXPLANATION	COMMENTARY
Verification of sampling and assaying	<i>The verification of significant intersections by either independent or alternative company personnel.</i>	At least two different company personnel visually verified intersections in the collected drill chips. At least two different company personnel visually verified intersections in the diamond core. A representative sample of each metre is collected and stored for further verification if needed. Drill core or core photos are used to verify drill intersections in diamond core samples.
	<i>The use of twinned holes.</i>	The spatial location and assaying accuracy of historical drilling was confirmed with RC and DD twinned holes.
	<i>Documentation of primary data, data entry procedures, data verification, data storage (physical and electronic) protocols.</i>	Data collected in the form of spread sheets, for drill hole collars, surveys, lithology and sampling. All geological and field data is entered into Microsoft Excel spreadsheets with lookup tables and fixed formatting (and protected from modification) thus only allowing data to be entered using the MacPhersons geological code system and sample protocol. Data is verified and validated by MRP geologists and stored in a Microsoft Access Database Data is emailed to a database administrator for validation and importation into a GEMS database and periodically into a SQL database using Datashed.
	<i>Discuss any adjustment to assay data.</i>	No adjustments are made to the primary assay data imported into the database.
Location of data points	<i>Accuracy and quality of surveys used to locate drill holes (collar and down-hole surveys), trenches, mine workings and other locations used in Mineral Resource estimation.</i>	Initial hole collars surveyed by licenced surveyor DGPS (0.01m). Diamond drill line by surveyed back sight and foresight pegs. Dip was checked with clinometer on drill mast at set up on hole. RC holes are surveyed by down hole surveys at 30m intervals using single shot "Reflex Camera +/- 0.1 ⁰ by drill contractor. Diamond holes are surveyed by down hole surveys at 30m intervals using single shot "Reflex Camera +/- 0.1 ⁰ by drill contractor. All holes are surveyed for deviation at end of hole by gyroscope method by local contractor ABIMS Ltd. This is normally inside rods but may be open hole for RC drilling. Final hole collar locations surveyed by licenced surveyor (Minecomp Pty Ltd) DGPS (0.01m).
	<i>Specification of the grid system used.</i>	The grid system used is Geocentric Datum of Australia 1994 (GDA94).

CRITERIA	JORC CODE EXPLANATION	COMMENTARY
	<i>Quality and adequacy of topographic control.</i>	<p>Historical – Aerial photography used to produce digital surface topographic maps at 1:2500 1m contours.</p> <p>2011 - Fugro Spatial Solutions Pty Ltd detailed aerial photographic survey. Orth rectification and mosaicking performed using Inpho Digital Photogrammetric Systems. Expected accuracy of detail within 0.8mm at the ortho-image map scale.</p> <p>Topographic control is from an aerial photographic survey completed during 2012 with accuracy within 0.01m.</p>
Data spacing and distribution	<i>Data spacing for reporting of Exploration Results.</i>	<p>The majority of drilling at Boorara is close spaced down to 10m line x 5m hole, with the remainder 20m line x 10m hole and some more wide spaced at 40m line x 10m hole.</p> <p>The holes reported in this release were 40m and 50m apart.</p>
	<i>Whether the data spacing and distribution is sufficient to establish the degree of geological and grade continuity appropriate for the Mineral Resource and Ore Reserve estimation procedure(s) and classifications applied.</i>	<p>The data spacing and distribution is sufficient to demonstrate spatial and grade continuity of the mineralized domains to support the current MRE classifications as Measured, Indicated and Inferred according to JORC (2012 Edition) reporting criteria.</p>
	<i>Whether sample compositing has been applied.</i>	<p>No sample compositing has been applied in the field within the mineralised zones.</p>
Orientation of data in relation to geological structure	<i>Whether the orientation of sampling achieves unbiased sampling of possible structures and the extent to which this is known, considering the deposit type.</i>	<p>Diamond drill holes and RC holes were orientated 115°/-60° which is considered to be perpendicular to the dominant quartz vein arrays or at 060°/-60° perpendicular to geology contacts. Various other orientations have been tried historically to try and capture the best orientation to drill various different structures and vein orientations. Historically diamond core holes were orientated 060°/-60°. BODH 048 & 049, were orientated 60°/-60° which drilling down dip of the mineralised dolerite. BODH 047 was orientated 115°/-60° which is close to perpendicular to the dominant quartz vein geometry.</p>
	<i>If the relationship between the drilling orientation and the orientation of key mineralised structures is considered to have introduced a sampling bias, this should be assessed and reported if material.</i>	<p>It is not believed that drilling orientation has introduced a sampling bias as the dominant mineralised quartz vein arrays at SSW area at Boorara are orientated 020°/35°NW, 040°/55° NW, 060°/40°NW & 100°/43°N .</p>
Sample security	<i>The measures taken to ensure sample security.</i>	<p>Chain of custody is managed by MRP. Field samples are stored overnight in a shed onsite (if not delivered to laboratory) which is equipped with security cameras and caretaker in residence who is an employee of MacPhersons.</p>

CRITERIA	JORC CODE EXPLANATION	COMMENTARY
		<p>Field samples are delivered to the assay laboratory in Kalgoorlie by MRP personnel once the hole is completed. Whilst in storage at the laboratory, they are kept in a locked yard. Tracking sheets have been set up online to track the progress of batches of samples through the laboratory.</p> <p>Sample pulps and coarse rejects are stored at ALS for a period of time and then returned to MRP.</p>
<p>Audits or reviews</p>	<p><i>The results of any audits or reviews of sampling techniques and data</i></p>	<p>CSA completed a review in early 2015 of the MRP sampling protocols as part of their Resource estimation work and were satisfied that the adequacy of sample preparation, sample security and analytical procedures support the Mineral Resource classification discussed and are of industry standard.</p> <p>MRP have maintained those sampling protocols from that time.</p>

JORC Code, 2012 Edition – Section 2 Report

Section 2 Reporting of Exploration Results

(Criteria in this section apply to all succeeding sections.)

CRITERIA	JORC CODE EXPLANATION	COMMENTARY
Mineral tenement and land tenure status	<i>Type, reference name/number, location and ownership including agreements or material issues with third parties such as joint ventures, partnerships, overriding royalties, native title interests, historical sites, wilderness or national park and environmental settings.</i>	<p>The Boorara Project is located approximately 17km east-southeast of Kalgoorlie, 2km west of Nimbus and 6km north-northwest of Golden Ridge' The Boorara project is situated within mining leases M26/29, M26/277 and M26/318 accessed from the Kalgoorlie-Bulong Road via an unsealed haul road. The tenements are located within the Hampton Hill Pastoral Station.</p> <p>Normal Western Australian state royalties apply. A third party royalty of \$1/t is payable to a maximum of \$1 million on M26/277. A third party royalty based on production milestones is payable on M26/29, M26/318 & M26/161 as below;</p> <ul style="list-style-type: none"> • 25,000 ounces gold production – 375 ounce royalty payable • 50,000 ounces gold production – 375 ounce royalty payable • 75,000 ounces gold production – 375 ounce royalty payable • 100,000 ounces gold production – 375 ounce royalty payable <p>Situated within the Boorara Project area are the reserves associated with the Boorara townsite. Proposed open pit operations will not impact on the reserves.</p> <p>The location of waste dumps will be sited so as to avoid mineral resources, exploration targets and to work with other mining infrastructure associated with the Nimbus operations located within 2km of the proposed Boorara open pits.</p> <p>MRP purchased the Nimbus property on 8th September 2011 from Kalgoorlie Ore Treatment Company Pty Ltd (KOTC). The tenements are held by KOTC, a wholly owned subsidiary of MacPhersons Resources Ltd.</p>

CRITERIA	JORC CODE EXPLANATION	COMMENTARY
	<p><i>The security of the tenure held at the time of reporting along with any known impediments to obtaining a licence to operate in the area.</i></p>	<p>The tenements are in good standing and no known impediments exist.</p>
<p>Exploration done by other parties</p>	<p><i>Acknowledgment and appraisal of exploration by other parties.</i></p>	<p>Historic gold production at Boorara produced 30,673 oz's from the treatment of 54,731 tonnes of ore. This production was from underground mining at the Cataract shaft, East Lode shaft and the Crown Jewel shaft. Historic mine plans and sections show two orientations of mine stopes, one at 040°/25° NW and another at 315°/65°W.</p> <p>Dampier Mining Pty Ltd and Texas Gulf Australia Ltd in 1980 drilled 20 RC holes for 1,038m and 10 diamond holes for 1,695m.</p> <p>Western Reefs NL in 1985 undertook soil sampling on a 40m x 20m grid. They also completed 180 RAB holes for 9892m, 268 RC holes for 20,831m and 26 diamond holes for 2,609m. Geological mapping was undertaken by Western Reefs including costean mapping and sampling. The Cataract shaft was refurbished and geologically mapped and surveyed. The Crown Jewel shaft was mapped and surveyed also.</p> <p>Windsor Resources in 1988 drilled 174 RC holes for 11,274m.</p> <p>Newmont in 1990 drilled 338 RAB holes for 15,446m, 39 RC holes for 4,319m and 4 diamond holes for 718m. Geological mapping and soil sampling was also undertaken.</p> <p>Mt Monger Gold Project in 1993 drilled 116 RC holes for 6,222m.</p> <p>Fimiston Mining NL in 1995 drilled 110 RC holes for 7,257m and 1 diamond hole for 195m. The data relating to the Boorara gold deposits comprising the Southern Stockwork Zone, Northern Stockwork Zone, Cataract Area, East Lode and Digger Dam was reviewed. The database was updated to incorporate the drilling completed by Fimiston and cross sections and interpretations made. A global polygonal based resource estimate was made which estimated resources of 2.25 million tonnes @ 1.40g/t Au at a cut-off grade of 0.5g/t or 1.42 million tonnes @ 1.72 g/t Au at a cut off of 1.0 g/t to be estimated. Block modelling of this polygonal data was then completed which returned a total oxide resource of 1,293,000 tonnes @ 1.49 g/t, and a total fresh resource of</p>

CRITERIA	JORC CODE EXPLANATION	COMMENTARY
		<p>1,095,000 tonnes @ 1.86g/t.</p> <p>New Hampton Goldfields Ltd in 2001 undertook a resource estimate at Boorara which resulted in a JORC compliant undiluted mineral resource of 1,506,000t @ 1.85 g/t Au. Open pit design of the Southern Stockwork, Cataract and the Northern Stockwork resulted in a Probable Reserve of 179,000t @ 3.0 g/t Au. The New Hampton Goldfields Ltd – Jubilee Gold Operations report, “Mineral Resource Estimate Report, Boorara M26/29 M26/318 and M26/161, June 2001 G Job” outlines the methodology and an explanation of the resource calculation.</p> <p>Polymetals (WA) Pty Ltd in 2006 estimated a NON JORC complaint total resource summary of 1,904,800t @1.38g/t Au using a cutoff grade of 0.5 g/t Au.</p> <p>Polymetals (WA) Pty Ltd in 2009 completed 18 RC holes for 1770m. From this program 126 samples with >1.0g/t Au were screen fire assayed, with another 34 duplicates taking the total samples assayed via screen fire assay to 160.</p>
Geology	<i>Deposit type, geological setting and style of mineralisation.</i>	<p>The Boorara Au deposit is an Archaean mesothermal Au deposit.</p> <p>The Boorara local geology consists of a sequence of ultramafic, mafic and felsic volcanic and volcanoclastic rocks, with interflow carbonaceous sediments found on the lithological boundaries. Dolerite intrusions are conformable within the sequence. The metamorphic grade of rocks at Boorara is lower greenschist facies. The alteration assemblage associated with better Au grades consists of quartz carbonate and sericite. Pyrite and arsenopyrite are associated with the better Au grades at Boorara.</p> <p>At Boorara gold mineralisation has been described by Verbeek (1987) to occur :</p> <ul style="list-style-type: none"> • Near dolerite contacts associated with quartz stockwork or vein arrays. Pervasive carbonate-sericite alteration is present. • Sulphides occur in the vein selvage with proximal arsenopyrite and distal pyrite. • Veins are usually less than 20 mm wide whilst the selvage may be 1 to 4 times the width of the vein.

CRITERIA	JORC CODE EXPLANATION	COMMENTARY
		<ul style="list-style-type: none"> • Associated with quartz veins in shallow (20 to 45 degrees) north-dipping shear zones. • Associated with steep (50 to 70 degrees) east-dipping shear zones on dolerite contacts. <p>Mineralisation envelopes at Boorara consist of three dominant orientations:</p> <ol style="list-style-type: none"> 1. NW trend of sub-vertical mineralisation which is typified by the East Lode workings, and interpreted as sub parallel to lithology contacts 2. NW moderate NE dipping structure at Crown Jewel, sub parallel to lithology contacts 3. NE striking, shallow to moderate NW dipping vein arrays as seen in the Boorara trial pit and at the Cataract workings.
<p>Drill hole Information</p>	<p><i>A summary of all information material to the understanding of the exploration results including a tabulation of the following information for all Material drill holes:</i></p> <ol style="list-style-type: none"> 1. <i>easting and northing of the drill hole collar</i> 2. <i>elevation or RL (Reduced Level – elevation above sea level in metres) of the drill hole collar</i> 3. <i>dip and azimuth of the hole</i> 4. <i>down hole length and interception depth</i> 5. <i>hole length.</i> <p><i>If the exclusion of this information is justified on the basis that the information is not Material and this exclusion does not detract from the understanding of the report, the Competent Person should clearly explain why this is the case.</i></p>	<p>Please refer to Appendix 1 Section 2 JORC table 1 for full details.</p> <p>Other relevant drill hole information can be found in Section 1-“Sampling techniques, “Drilling techniques” and “Drill sample recovery”.</p>
<p>Data aggregation methods</p>	<p><i>In reporting Exploration Results, weighting averaging techniques, maximum and/or minimum grade truncations (e.g. cutting of high grades) and cut-off grades are usually Material and should be stated.</i></p> <p><i>Where aggregate intercepts incorporate short lengths of high grade results and longer lengths of low grade results, the procedure used for such aggregation should be stated and some typical examples of such aggregations should be shown in detail.</i></p>	<p>All one metre diamond drill results are reported in Appendix 1 Section 2 of JORC table 1. Holes include up to 2m of internal dilution - host dolerite was intersected in the 2m diluted section with significant alteration. A bottom cutoff grade of 0.3 g/t was used and no top cut grade was applied.</p> <p>The procedure applied to the aggregate intercepts quoted is length weighted average (sum product of interval x corresponding interval assay grade), divided by sum of interval lengths and rounded by one decimal place.</p>

CRITERIA	JORC CODE EXPLANATION	COMMENTARY
	<p><i>The assumptions used for any reporting of metal equivalent values should be clearly stated.</i></p>	<p>No metal equivalent values have been reported.</p>
<p>Relationship between mineralisation widths and intercept lengths</p>	<p><i>These relationships are particularly important in the reporting of Exploration Results.</i></p>	<p>These drill holes are designed to drill perpendicular to the dominant quartz vein array geometry within the Boorara dolerite at Boorara which gives MRP geologists a good understanding of mineralisation widths encountered.</p> <p>The dominant mineralisation geometries seen at the Boorara gold project are;</p>
	<p><i>If the geometry of the mineralisation with respect to the drill hole angle is known, its nature should be reported.</i></p>	<ol style="list-style-type: none"> 1. Shear zone hosted mineralisation on the dolerite east contact which strikes 320° and is steeply dipping to the west. 2. Quartz vein sheeted vein array hosted mineralisation that is orientated 020°/48°NW, 060°/40°NW & 100°/43°N.
	<p><i>If it is not known and only the down hole lengths are reported, there should be a clear statement to this effect (e.g. 'down hole length, true width not known').</i></p>	<p>The estimated true width of the granophyric dolerite has been estimated at 20m and this based on BORG 157 intersection 23m @ 2.02 g/t. BODH 035 intersected 22m @ 2.1 g/t which has been used to estimate true width.</p> <p>The true width of the ore at the Boorara gold resource is reasonably well known from the earlier deeper resource drilling, but at Boorara does not appear to be consistent in width due to the structural setting of the mineralisation. Greater than 90% of all drill holes would define both boundaries to mineralisation from which a true width can be reasonably determined.</p>
<p>Diagrams</p>	<p><i>Appropriate maps and sections (with scales) and tabulations of intercepts should be included for any significant discovery being reported These should include, but not be limited to a plan view of drill hole collar locations and appropriate sectional views.</i></p> <p><i>(NOTE: Any map, section, diagram, or other graphic or photo must be of high enough resolution to clearly be viewed, copied and read without distortion or loss of focus).</i></p>	<p>Please refer to the body of the announcement. .</p>
<p>Balanced reporting</p>	<p><i>Where comprehensive reporting of all Exploration Results is not practicable, representative reporting of both low and high grades and/or widths should be practiced to avoid misleading reporting of Exploration Results.</i></p>	<p>All 1m assayed intervals have been reported in Appendix 1 Section 2 of the JORC table.</p>

CRITERIA	JORC CODE EXPLANATION	COMMENTARY
Other substantive exploration data	<i>Other exploration data, if meaningful and material, should be reported including (but not limited to): geological observations; geophysical survey results; geochemical survey results; bulk samples – size and method of treatment; metallurgical test results; bulk density, groundwater, geotechnical and rock characteristics; potential deleterious or contaminating substances.</i>	The diamond holes were also utilised for bulk density measurements.
Further work	<p><i>The nature and scale of planned further work (e.g. tests for lateral extensions or depth extensions or large-scale step-out drilling).</i></p> <p><i>Diagrams clearly highlighting the areas of possible extensions, including the main geological interpretations and future drilling areas, provided this information is not commercially sensitive.</i></p> <p><i>(NOTE: Any map, section, diagram, or other graphic or photo must be of high enough resolution to clearly be viewed, copied and read without distortion or loss of focus).</i></p>	<p>Further RC & Diamond drilling is planned to further test mineralisation associated with this release.</p> <p>Please refer to the body of the report.</p>

JORC Code, 2012 Edition – Table 1

Section 2 Report

Appendix 1 One metre Diamond Drilling and RC significant intercepts >0.3 g/t

(includes up to 2m of internal dilution)

HOLE-ID	Easting(GDA)	Northing (GDA)	mRL	Azimuth (°)	Dip (°)	Depth From (m)	Depth To (m)	INTERVAL	Au (g/t)
BODH047	370276.49	6590820.60	400.04	115.78	-60.46	13.00	14.00	1.00	17
BODH047						14.00	15.00	1.00	0.48
BODH047						16.00	17.00	1.00	0.75
BODH047						19.00	20.00	1.00	2.83
BODH047						24.00	25.00	1.00	1.66
BODH047						28.00	29.00	1.00	0.30
BODH047						34.00	35.00	1.00	1.21
BODH047						43.00	44.00	1.00	0.46
BODH047						44.00	45.00	1.00	0.44
BODH047						70.00	71.00	1.00	0.43
BODH047						72.00	73.00	1.00	0.41
BODH047						73.00	74.00	1.00	0.54
BODH047						74.00	75.00	1.00	0.56
BODH047						75.00	76.00	1.00	0.52
BODH047						76.00	77.00	1.00	0.52
BODH047						77.00	78.00	1.00	0.93
BODH047						78.00	79.00	1.00	0.72
BODH047						79.00	80.00	1.00	1.39
BODH047						80.00	81.00	1.00	0.43
BODH047						82.00	83.00	1.00	0.31
BODH047						84.00	85.00	1.00	1.46
BODH047						85.00	86.00	1.00	1.11
BODH047						86.00	87.00	1.00	0.55
BODH047						87.00	88.00	1.00	0.71
BODH047						88.00	89.00	1.00	0.82

HOLE-ID	Easting(GDA)	Northing (GDA)	mRL	Azimuth (°)	Dip (°)	Depth From (m)	Depth To (m)	INTERVAL	Au (g/t)
BODH047						89.00	90.00	1.00	0.74
BODH047						90.00	91.00	1.00	0.15
BODH047						91.00	92.00	1.00	0.46
BODH047						92.00	93.00	1.00	4.67
BODH047						93.00	94.00	1.00	3.01
BODH047						94.00	95.00	1.00	1.82
BODH047						95.00	96.00	1.00	0.33
BODH047						97.00	98.00	1.00	0.69
BODH047						98.00	99.00	1.00	1.39
BODH047						99.00	100.00	1.00	1.05
BODH047						100.00	101.00	1.00	0.33
BODH047						101.00	102.00	1.00	0.82
BODH047						102.00	103.00	1.00	0.71
BODH047						105.00	106.00	1.00	0.32
BODH047						106.00	107.00	1.00	1.06
BODH047						107.00	108.00	1.00	0.57
BODH047						108.00	109.00	1.00	0.88
BODH047						109.00	110.00	1.00	0.39
BODH047						110.00	111.00	1.00	0.49
BODH047						111.00	112.00	1.00	0.40
BODH047						112.00	113.00	1.00	0.34
BODH047						113.00	114.00	1.00	0.37
BODH047						123.00	124.00	1.00	0.31
BODH047						126.00	127.00	1.00	0.76
BODH047						134.00	135.00	1.00	0.30
BODH047						136.00	137.00	1.00	0.46
BODH047						137.00	138.00	1.00	0.36
BODH047						139.00	140.00	1.00	0.33
BODH047						140.00	141.00	1.00	0.47

HOLE-ID	Easting(GDA)	Northing (GDA)	mRL	Azimuth (°)	Dip (°)	Depth From (m)	Depth To (m)	INTERVAL	Au (g/t)
BODH047						141.00	142.00	1.00	0.34
BODH047						142.00	143.00	1.00	0.34
BODH047						146.00	147.00	1.00	0.49
BODH047						148.00	149.00	1.00	0.63
BODH047						159.00	160.00	1.00	0.30
BODH047						160.00	161.00	1.00	0.39
BODH047						167.00	168.00	1.00	0.53
BODH047						168.00	169.00	1.00	3.05
BODH047						169.00	170.00	1.00	1.50
BODH047						172.00	173.00	1.00	0.32
BODH047						174.00	175.00	1.00	1.02
BODH047						184.00	185.00	1.00	0.42
BODH047						186.00	187.00	1.00	11.50
BODH047						189.00	190.00	1.00	0.93
BODH047						195.00	196.00	1.00	0.48
BODH047						203.00	204.00	1.00	0.69
BODH047						207.00	208.00	1.00	0.66
BODH047						219.00	220.00	1.00	0.52
BODH047						220.00	221.00	1.00	0.37
BODH047						223.00	224.00	1.00	0.60
BODH047						225.00	226.00	1.00	0.50
BODH047						227.00	228.00	1.00	0.70
BODH047						230.00	231.00	1.00	0.46
BODH047						233.00	234.00	1.00	0.31
BODH047						234.00	235.00	1.00	0.37
BODH047						236.00	237.00	1.00	0.48
BODH047						298.00	299.00	1.00	0.89
BODH047						299.00	300.00	1.00	1.31
BODH047						300.00	301.00	1.00	1.99

HOLE-ID	Easting(GDA)	Northing (GDA)	mRL	Azimuth (°)	Dip (°)	Depth From (m)	Depth To (m)	INTERVAL	Au (g/t)
BODH047						301.00	302.00	1.00	0.91
BODH047						302.00	303.00	1.00	0.70
BODH047						304.00	305.00	1.00	0.63
BODH047						305.00	306.00	1.00	1.09
BODH047						306.00	307.00	1.00	16.6
BODH047						325.00	326.00	1.00	0.36
BODH048	370124.65	6591113.91	400.52	60.67	-59.7	1.00	2.00	1.00	0.65
BODH048						2.00	3.00	1.00	0.32
BODH048						6.00	7.00	1.00	0.45
BODH048						7.00	8.00	1.00	0.82
BODH048						8.00	9.00	1.00	0.29
BODH048						9.00	10.00	1.00	2.67
BODH048						10.00	11.00	1.00	1.26
BODH048						11.00	12.00	1.00	1.93
BODH048						12.00	13.00	1.00	2.05
BODH048						13.00	14.00	1.00	1.21
BODH048						14.00	15.00	1.00	1.40
BODH048						15.00	16.00	1.00	0.63
BODH048						16.00	17.00	1.00	2.84
BODH048						20.00	21.00	1.00	0.64
BODH048						46.00	47.00	1.00	0.50
BODH048						53.00	54.00	1.00	0.31
BODH048						90.00	91.00	1.00	0.73
BODH048						105.00	106.00	1.00	0.85
BODH048						111.00	112.00	1.00	1.86
BODH048						115.00	116.00	1.00	1.07
BODH048						117.00	118.00	1.00	1.27
BODH048						118.00	119.00	1.00	0.61
BODH048						119.00	120.00	1.00	0.51

HOLE-ID	Easting(GDA)	Northing (GDA)	mRL	Azimuth (°)	Dip (°)	Depth From (m)	Depth To (m)	INTERVAL	Au (g/t)
BODH048						131.00	132.00	1.00	1.40
BODH048						132.00	133.00	1.00	0.82
BODH048						133.00	134.00	1.00	0.56
BODH048						140.00	141.00	1.00	0.32
BODH048						144.00	145.00	1.00	0.91
BODH048						146.00	147.00	1.00	0.54
BODH048						153.00	154.00	1.00	0.56
BODH048						160.00	161.00	1.00	0.54
BODH048						164.00	165.00	1.00	9.58
BODH048						170.00	171.00	1.00	0.70
BODH048						173.00	174.00	1.00	51.9
BODH048						175.00	176.00	1.00	0.81
BODH048						176.00	177.00	1.00	0.38
BODH048						182.00	183.00	1.00	1.14
BODH048						186.00	187.00	1.00	0.99
BODH048						187.00	188.00	1.00	0.36
BODH048						190.00	191.00	1.00	1.68
BODH048						193.00	194.00	1.00	0.87
BODH048						196.00	197.00	1.00	0.60
BODH048						197.00	198.00	1.00	0.32
BODH048						199.00	200.00	1.00	1.29
BODH048						212.00	213.00	1.00	0.73
BODH048						215.00	216.00	1.00	0.59
BODH048						219.00	220.00	1.00	1.03
BODH048						220.00	221.00	1.00	0.89
BODH048						223.00	224.00	1.00	0.67
BODH049	370106.46	6591126.53	400.60	63.93	-60.66	0.00	1.00	1.00	0.34
BODH049						1.00	2.00	1.00	0.35
BODH049						16.00	17.00	1.00	0.45

HOLE-ID	Easting(GDA)	Northing (GDA)	mRL	Azimuth (°)	Dip (°)	Depth From (m)	Depth To (m)	INTERVAL	Au (g/t)
BODH049						19.00	20.00	1.00	0.88
BODH049						23.00	24.00	1.00	0.53
BODH049						24.00	25.00	1.00	0.59
BODH049						27.00	28.00	1.00	0.71
BODH049						29.00	30.00	1.00	0.38
BODH049						30.00	31.00	1.00	0.63
BODH049						31.00	32.00	1.00	0.37
BODH049						35.00	36.00	1.00	0.39
BODH049						36.00	37.00	1.00	0.99
BODH049						37.00	38.00	1.00	1.66
BODH049						38.00	39.00	1.00	1.01
BODH049						39.00	40.00	1.00	0.42
BODH049						43.00	44.00	1.00	0.72
BODH049						44.00	45.00	1.00	0.39
BODH049						45.00	46.00	1.00	0.93
BODH049						46.00	47.00	1.00	0.37
BODH049						47.00	48.00	1.00	0.55
BODH049						49.00	50.00	1.00	0.50
BODH049						51.00	52.00	1.00	0.51
BODH049						66.00	67.00	1.00	0.93
BODH049						67.00	68.00	1.00	0.63
BODH049						68.00	69.00	1.00	0.42
BODH049						70.00	71.00	1.00	0.37
BODH049						72.00	73.00	1.00	0.32
BODH049						73.00	74.00	1.00	0.32
BODH049						78.00	79.00	1.00	3.06
BODH049						93.00	94.00	1.00	0.35
BODH049						96.00	97.00	1.00	2.53
BODH049						106.00	107.00	1.00	0.47

HOLE-ID	Easting(GDA)	Northing (GDA)	mRL	Azimuth (°)	Dip (°)	Depth From (m)	Depth To (m)	INTERVAL	Au (g/t)
BODH049						121.00	122.00	1.00	0.65
BODH049						132.00	133.00	1.00	1.16
BODH049						136.00	137.00	1.00	0.48
BODH049						142.00	143.00	1.00	0.64
BODH049						154.00	155.00	1.00	0.42
BODH049						155.00	156.00	1.00	0.45
BODH049						162.00	163.00	1.00	0.39
BODH049						176.00	177.00	1.00	0.45
BODH049						196.00	197.00	1.00	1.08
BODH049						201.00	202.00	1.00	0.52
BODH049						213.00	214.00	1.00	0.30
BODH049						221.00	222.00	1.00	1.55
BODH049						222.00	223.00	1.00	0.37
BODH049						223.00	224.00	1.00	1.29
BODH049						226.00	227.00	1.00	0.36
BODH049						227.00	228.00	1.00	0.68
BODH049						228.00	229.00	1.00	6.92
BODH049						229.00	230.00	1.00	0.86
BODH049						230.00	231.00	1.00	0.75
BODH049						231.00	232.00	1.00	0.43
BODH049						232.00	233.00	1.00	0.45
BODH049						233.00	234.00	1.00	0.84
BODH049						236.00	237.00	1.00	1.07
BODH049						240.00	241.00	1.00	0.51
BODH049						246.00	247.00	1.00	0.33
BODH049						270.00	271.00	1.00	0.49
BODH049						272.00	273.00	1.00	0.36
BODH049						275.00	276.00	1.00	0.79