



NEW CENTURY
RESOURCES



CENTURY ZINC MINE

Technical Presentation
August 2017

'DEVELOPING THE LARGEST NEAR TERM ZINC & LEAD PRODUCER ON THE ASX'

Disclaimer

Forward-Looking Statements

This presentation contains forward-looking statements which are identified by words such as "believes", "estimates", "expects", "targets", "intends", "may", "will", "would", "could", or "should" and other similar words that involve risks and uncertainties. These statements are based on an assessment of present economic and operating conditions, and on a number of assumptions regarding future events and actions that, as at the date of this presentation, are considered reasonable. Such forward-looking statements are not guarantees of future performance and involve known and unknown risks, uncertainties, assumptions and other important factors, many of which are beyond the control of the Company and the Directors of the Company. Actual results to differ materially from those expressed in any forward-looking statements. The Company has no intention to update or revise forward-looking statements, or to publish prospective financial information in the future, regardless of whether new information, future events or any other factors affect the information contained in this presentation, except where required by law. The Company cannot and does not give assurances that the results, performance or achievements expressed or implied in the forward-looking statements contained in this presentation will actually occur and investors are cautioned not to place undue reliance on these forward-looking statements.

Competent Persons Statements

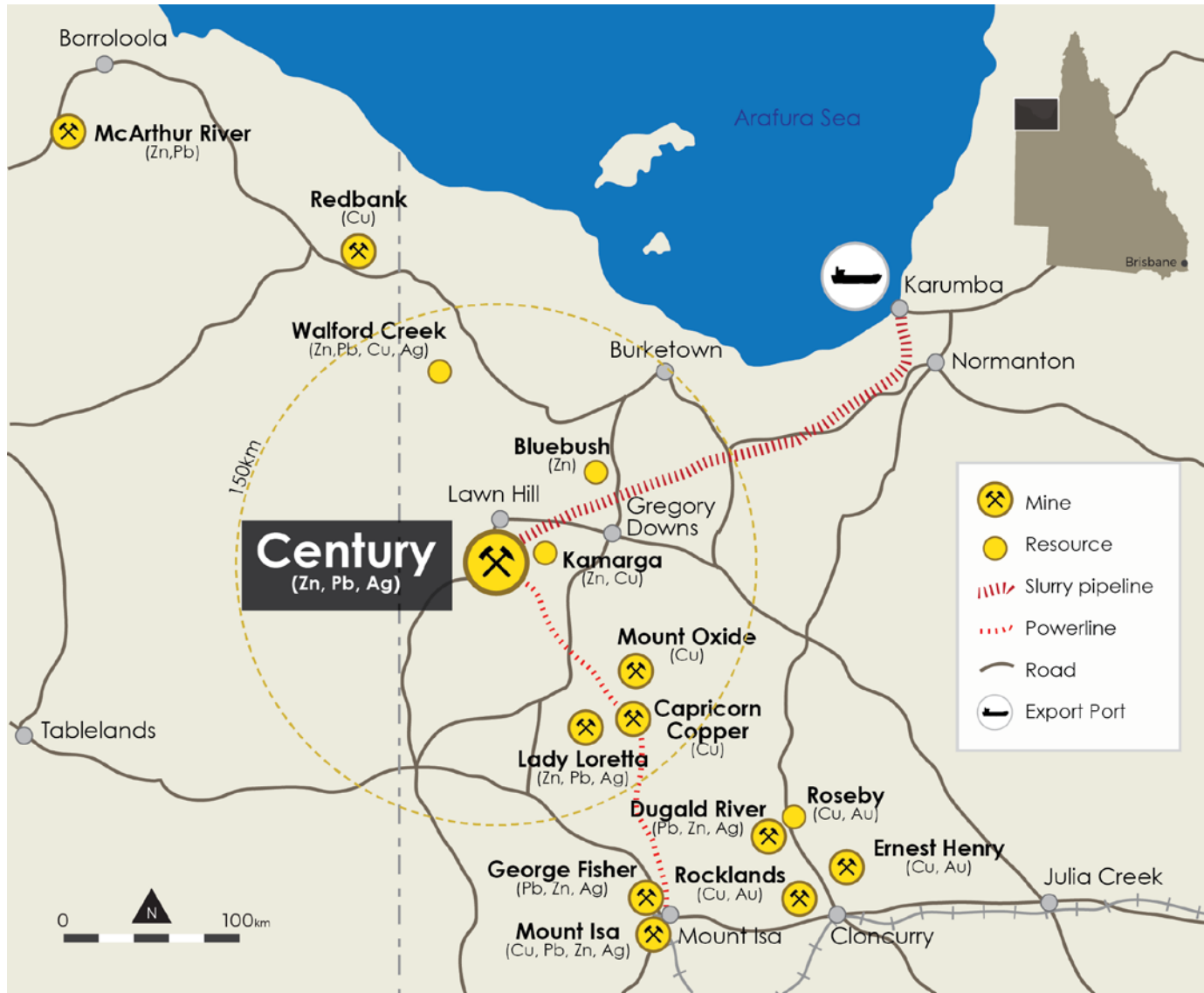
The information in this presentation that relates to Exploration Results and Mineral Resources (as those terms are defined in the JORC Code 2012) in respect to the Century Project was reported by the Company in its prospectus released to ASX on 20 June 2017 and in announcements to ASX dated 27 July 2017, 7 August 2017, 14 August 2017, 24 August 2017 and 29 August 2017. The Company confirms that it is not aware of any new information or data that materially affects the Century Project resource estimates, and that all material assumptions and technical parameters underpinning those estimates continue to apply and have not materially changed.

Global mineral resources estimate for the Century Project

	Tonnes (Mt)	Zinc (%)	Lead (%)	Silver (g/t)	Zinc Metal (t)
Century Tailings Deposit					
Indicated	12.8	2.97	-	-	380,000
Inferred	58.2	2.68	-	-	1,560,000
Total	71.0	2.73	-	-	1,940,000
Silver King Deposit					
Total (Inferred)	2.7	6.9	12.5	121	185,000
East Fault Block Deposit					
Total (Inferred)	0.5	12	1.1	48	60,000

Century Mine Location

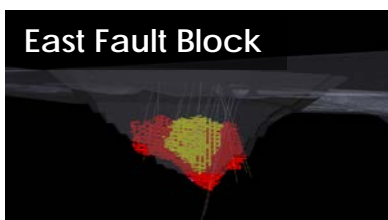
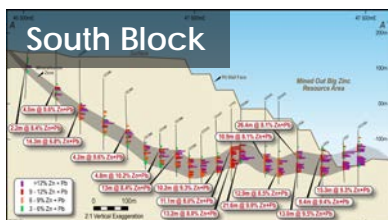
783km² OF TENEMENTS IN THE PROLIFIC NORTH WEST MINERALS PROVINCE OF QLD



Century Acquisition Highlights

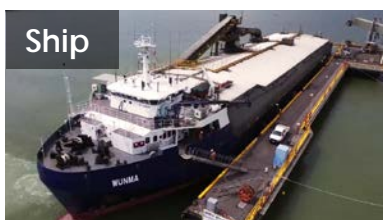
Mineral Assets

2.2Mt Zn, 340kt Pb, 11Moz Ag
Significant exploration upside



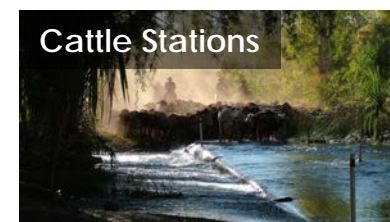
Infrastructure Assets

7Mtpa processing plant
>\$1B in replacement costs



Commercial Aspects

38,000 head cattle operation
MMG financial support package



\$46.6M
MMG Cash Payments

\$193M
Financial Assurance Bond

Property Assets
13 Investment Properties

New Century Resources Capital Structure

ACQUIRING 100% OF CENTURY MINE VIA \$10M EARN IN (FOR 70%) WITH OPTION OVER REMAINING 30%

NCZ
ASX CODE

295,724,750
SHARES

80,500,000
OPTIONS
(\$0.25 - \$1.00/share,
av. price \$0.41/share)

\$290M
MARKET CAP
(at \$0.98/share)

Cash at Hand	\$10.5M
Further MMG Payments*	\$23.1M
Native Title Payments Trust**	\$8.3M

CASH POSITION



\$41.9M

TOTAL CASH & RECEIVABLES
(at 14 July 2017)

* A\$5.75M payments occurring 6 monthly – see Prospectus dated 20 June 2017

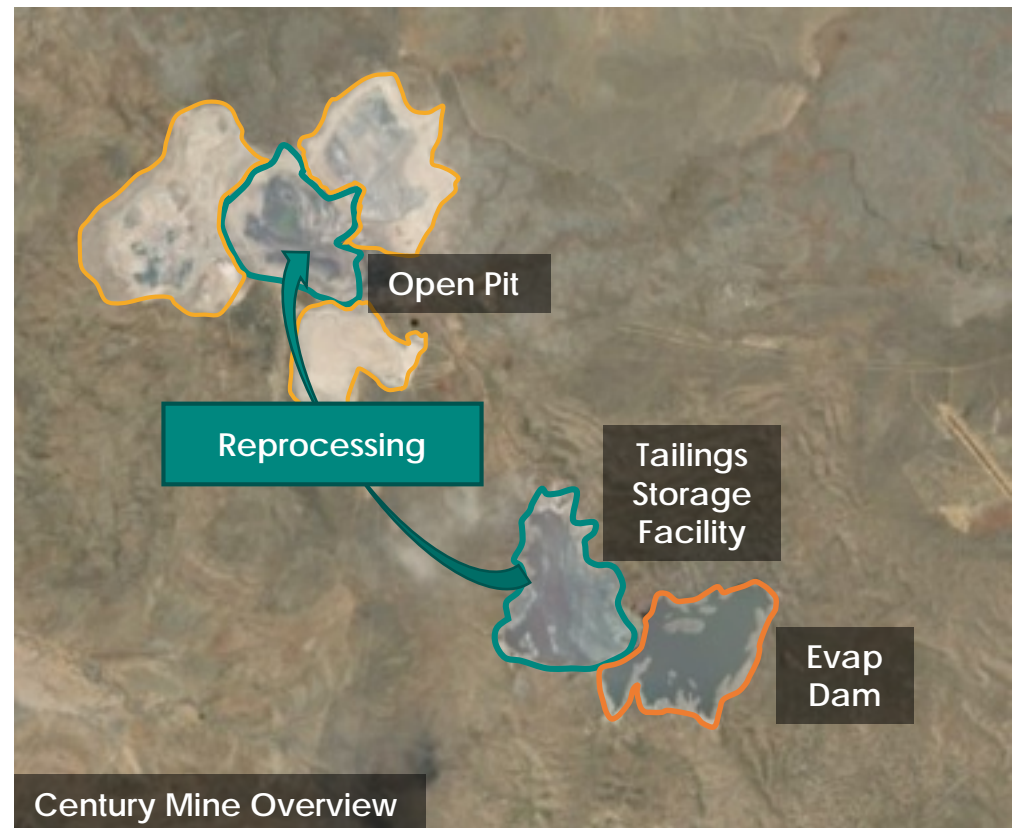
** Funds available for future native title commitments only

Mine Restart via Tailings Reprocessing

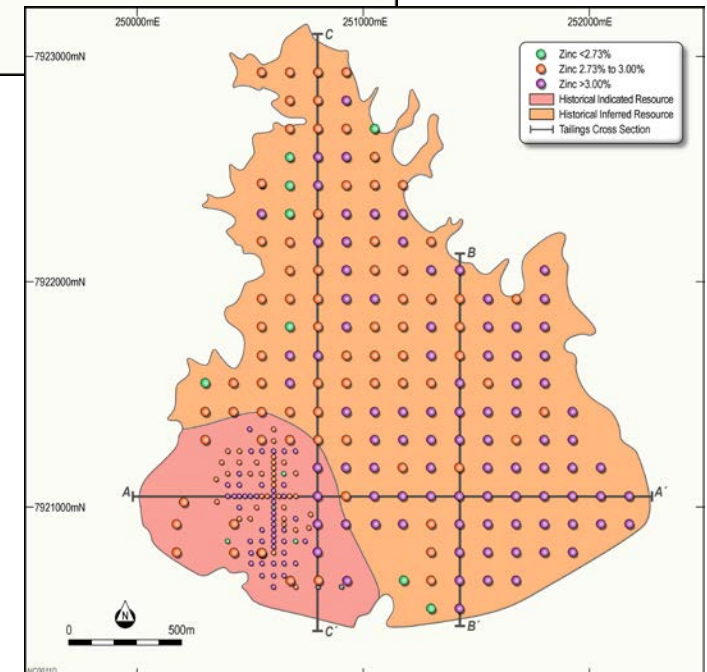
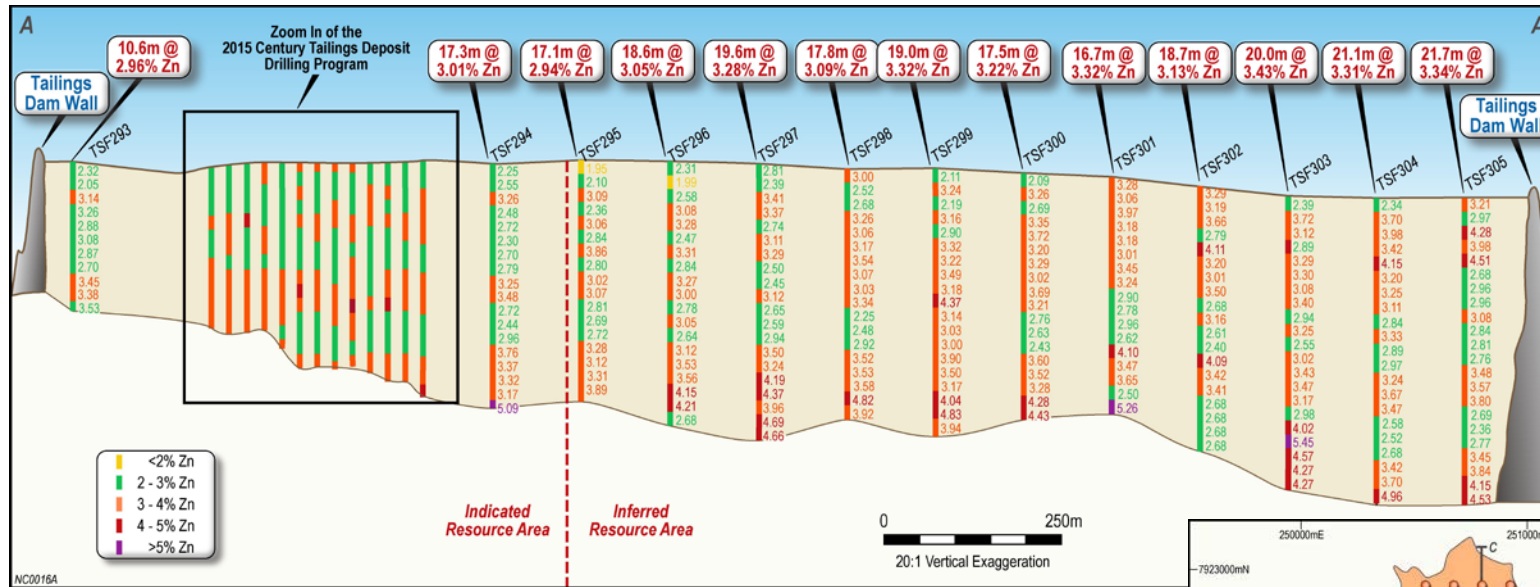
PROGRESSIVELY REDUCES OVERALL DISTURBANCE FOOTPRINT & ENABLES MINE REHABILITATION

Century Tailings Deposit	Tonnes (Mt)	Zinc (%)	Lead (%)	Silver (g/t)	Zn Metal (t)
Indicated + Inferred Resource	71.0	2.73	Not Determined	Not Determined	1,940,000

- Tailings hydraulic mining using evap. dam water
- Zinc extraction from tails:
 - Recovery up to 64% achieved
 - Plant capacity 7Mtpa+
 - Potential long life operation
- Restart Study underway (due Q4 2017)
- Recently completed drilling



Century Tailings Resource Upgrade Imminent



- Completed 2,350m drilling program
- Av. hole composite grade of **3.00% Zn, 0.45% Pb, 12.4g/t Ag**
- Dry bulk density 1.90t/m³ vs 1.67t/m³ in Mineral Resource
- Excellent vertical & lateral grade continuity
- Consistent silver & lead assays
- Planned 'high grading' of initial production

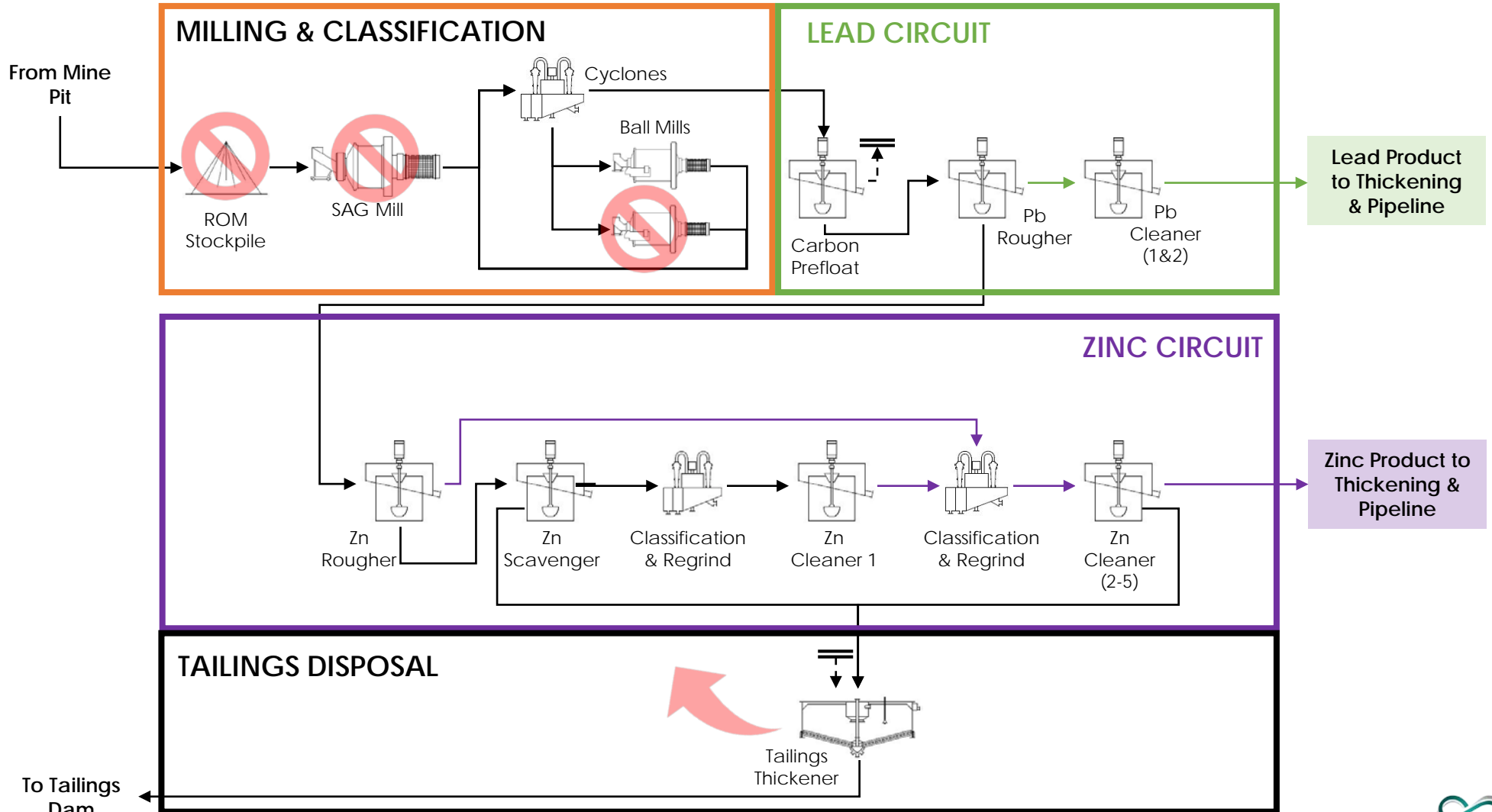
Century Processing Plant – Insitu Operations

- 16 year of operations, fine grind + flotation, producing 1Mtpa of concentrate
- Century utilises an identical process flowsheet to many zinc other operations
- Century Processing Plant operated until Jan 2016, now on care & maintenance

Flowsheet	Century	McArthur River	Mt Isa
Milling	Crush & grind to <38µm	Crush & grind to <45µm	Crush & grind to <37µm
Flotation	Rougher Scavenger Cleaner	Rougher Scavenger Cleaner	Rougher Scavenger Cleaner
Regrind	To <7µm	To <7µm	To <12µm
Products	Zinc & Lead Concentrates	Zinc & Lead Concentrates	Zinc & Lead Concentrates

Current Plant Flowsheet

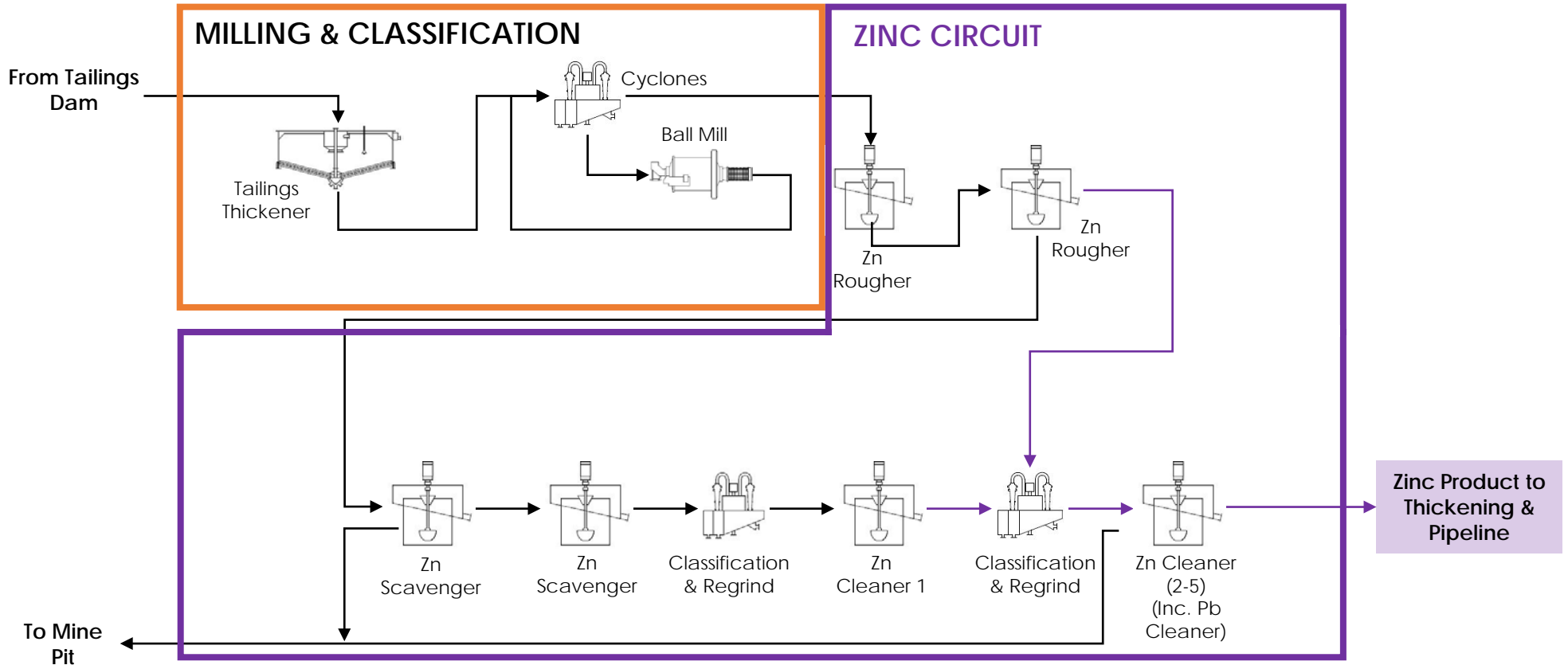
APPLICABLE FOR PROCESSING IN-SITU RESOURCES (SOUTH BLOCK, SILVER KING, EAST FAULT BLOCK)



To Tailings Dam

Tailings Operations Flowsheet

SIGNIFICANT INCREASE IN ZINC FLOTATION TIME - MINOR MODIFICATION REQUIRED ONLY

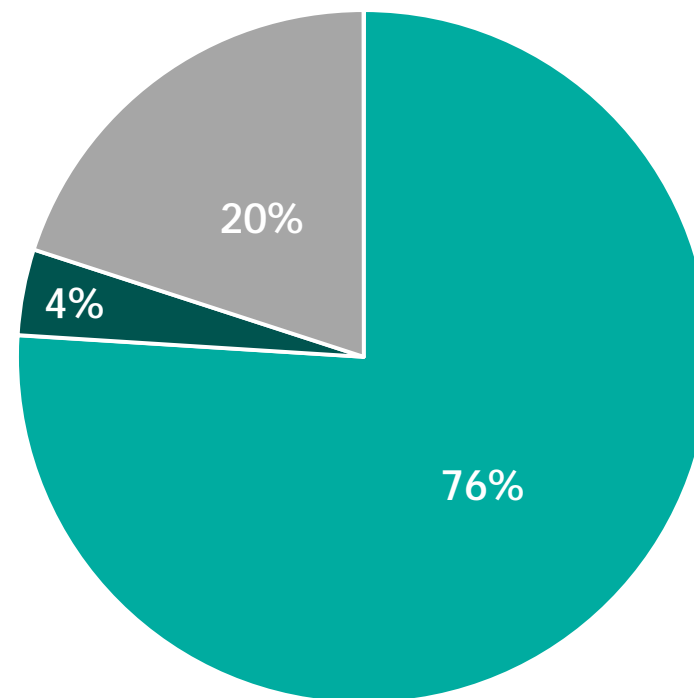


Carbon & lead float cells incorporated into zinc float

Distribution of Zinc in Tailings

Zinc mineralisation in tailings*:

Mineralisation	% in Tailings	% Recovery	% Total Recovery
Sulphide	76%	80%	61%
Water Soluble	4%	85%	3%
Non-sulphide**	20%	0%	0%
Total			~64%



■ Sulphide ■ Water Soluble ■ Non-Sulphide Zinc

Distribution of Zinc in Tailings

- Key recovery increase concepts:
 - Grinding of 'missed' +45 μ m zinc to enable recovery
 - Recovery of -9 μ m size fraction that was missed in historic operations

Tailings Size (μ m)	% Wt	Zn Dist%
106	9.9	10.0
75	8.3	10.4
45	11.3	11.0
36	2.7	3.1
25	7.2	4.8
17	6.9	3.8
12	7.4	3.9
9	3.3	1.9
-9	43.1	51.2
Total	100.0	100.0

Century Processing Plant – Tailings Operations

- Key throughput & recovery increase concepts:
 - carbon & lead floats incorporated into zinc float
 - additional volume to Zinc Rougher/Scavenger (**170% increase in volume**)
 - flotation pulp density increase from 29% to 34% (**further 17% total additional volume**)

Insitu Plant Configuration		Tailings Plant Configuration		Notes
Process	Vol (m ³)	Process	Vol (m ³)	
Carbon Prefloat	800			Not required for tails (capacity integrated into zinc float)
Lead Float	1,000			Not required for tails (capacity integrated into zinc float)
Zinc Rougher / Scavenger	2,100	Zinc Rougher / Scavenger	5,700	170% increase in volume (additional float time or throughput)
Zinc Cleaner	4,200	Zinc Cleaner	2,400	Less zinc cleaning required (less concentrate production)
Total	8,100	Total	8,100	↑ Density = ↑ Float Time or Throughput

Silver

- Tailings contain approx. 12g/t silver
- ~50% recovered into Zn concentrate at >200g/t silver
- Silver not historically assayed in tailings drilling
- Potential decrease in cash costs during operations through the addition of silver credits



Tailings Development to Date

1999-2016: Big Zinc Deposit Mining (>1Mtpa concentrate production)

- Operation involved progressive grinding to <10µm and flotation
- >1Mtpa of zinc con. produced via 7Mtpa processing plant for 16 years
- Focused on high throughput at the expense of recovery (2015: 74%)

2014-2015: MMG Tailings Reprocessing Trials - Low Grade Con. Production

- 10,000t Bulk Pilot *Trial*: >70% recovery of Zn into a Rougher concentrate
- Focused on direct metal production on site downstream processing

2016: MMG Tailings Reprocessing Trials - High Grade Con. Production

- Focused on utilisation of existing Century Processing Plant
- Testwork by Changsha Research Inst. of Mining & Metallurgy (CRIMM)
- Built on Bulk Pilot trial success
- Additional Scavenger and Cleaner unit operations after Rougher
- Successful zinc recovery of 52% into a concentrate grade of >48% Zn

2017: New Century - High Grade Flowsheet Optimisation Testwork

- Built on success of MMG High Grade Con Production testwork
- Proposed modifications use only the existing Century Processing Plant
- Increased recovery from 50% to up to 64% at zinc con grade of 52%

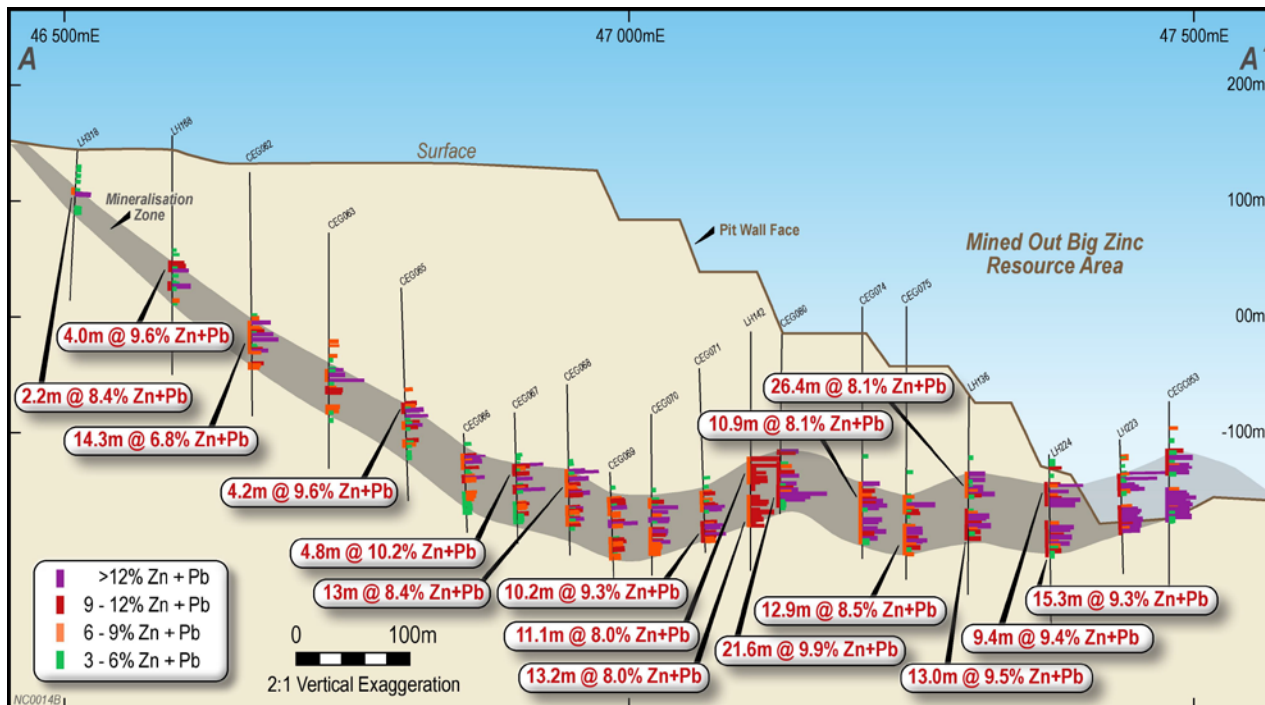
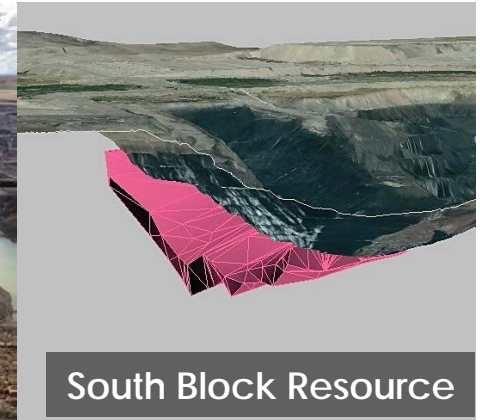
2014 Bulk Trial on Century Tailings

ZINC FLOTATION FROM MMG TAILINGS 10,000T BULK PILOT TRIAL



Insitu Resources: South Block Deposit

OPEN PIT CUT BACK (<0.5km FROM PLANT)



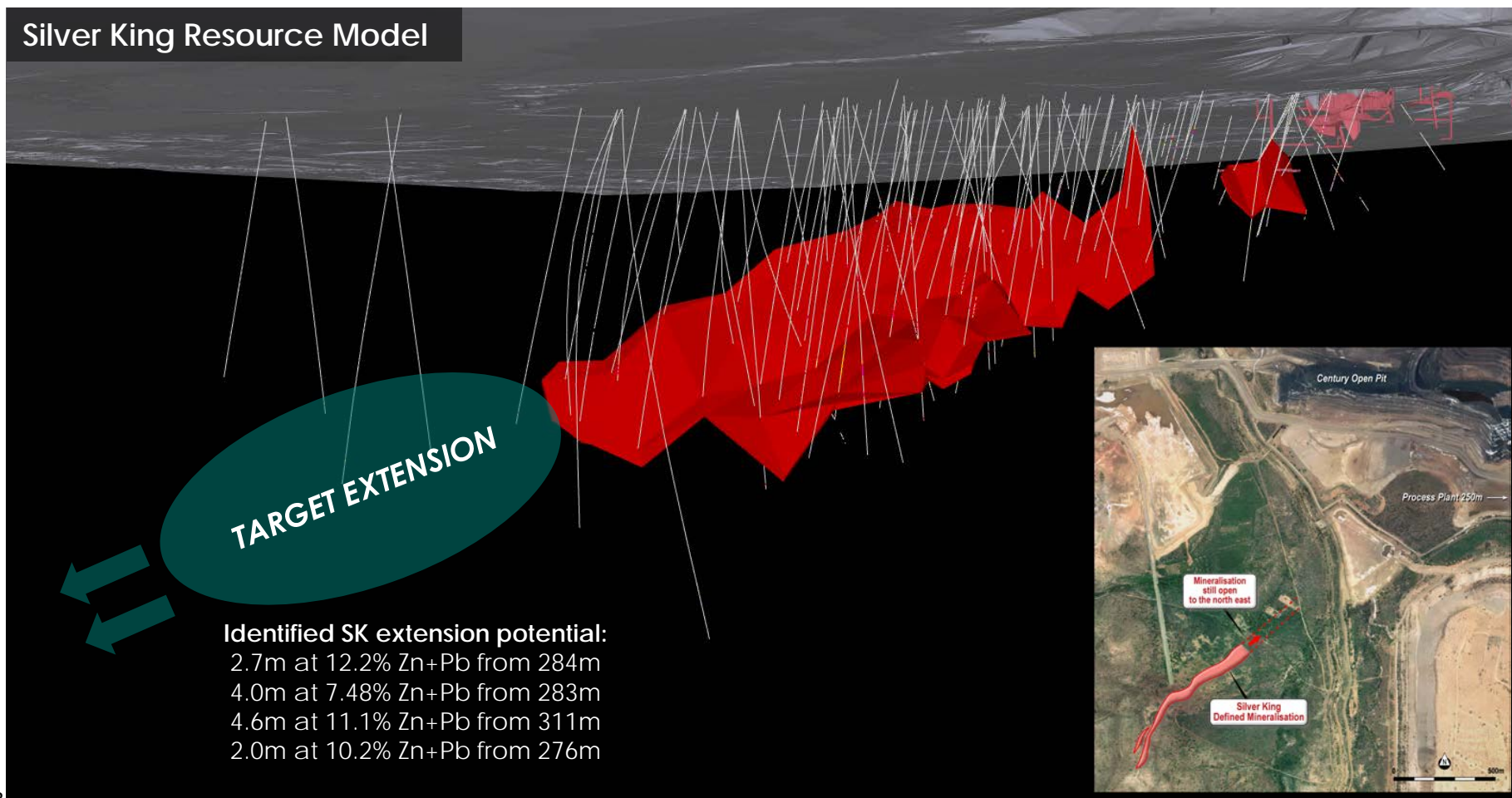
- Part of original Century ore body
- Simple cut back and open pit operation
- Not mined due to Zn price
- Zn price at time of mine planning <US1,800/t
- Resource definition underway

Insitu Resources: Silver King Deposit

HIGH GRADE UNDERGROUND (<2km FROM PLANT), EXTENDING NORTH-EAST

Silver King Deposit	Tonnes (Mt)	Zinc (%)	Lead (%)	Silver (g/t)	Contained Metal
Total (Inferred)	2.7	6.9	12.5	120	186kt Zn, 338kt Pb, 10.4Moz Ag

Silver King Resource Model

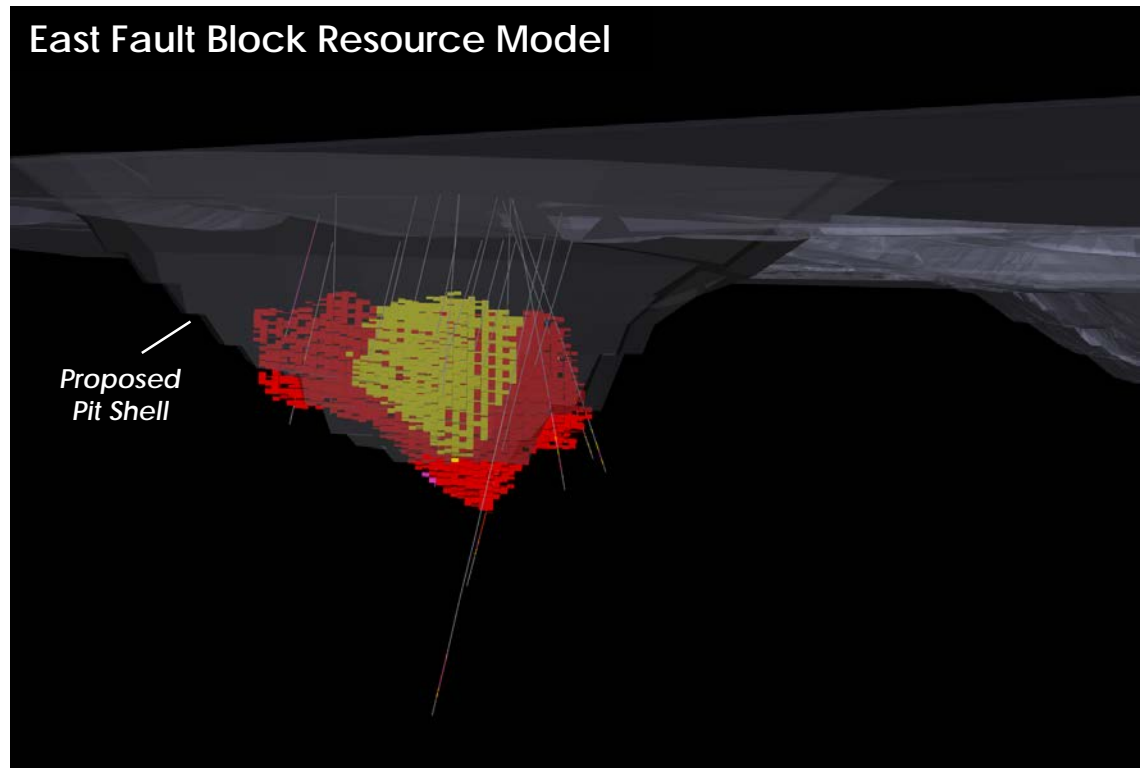


Insitu Resources: East Fault Block Deposit

OPEN PIT (200m FROM PLANT)

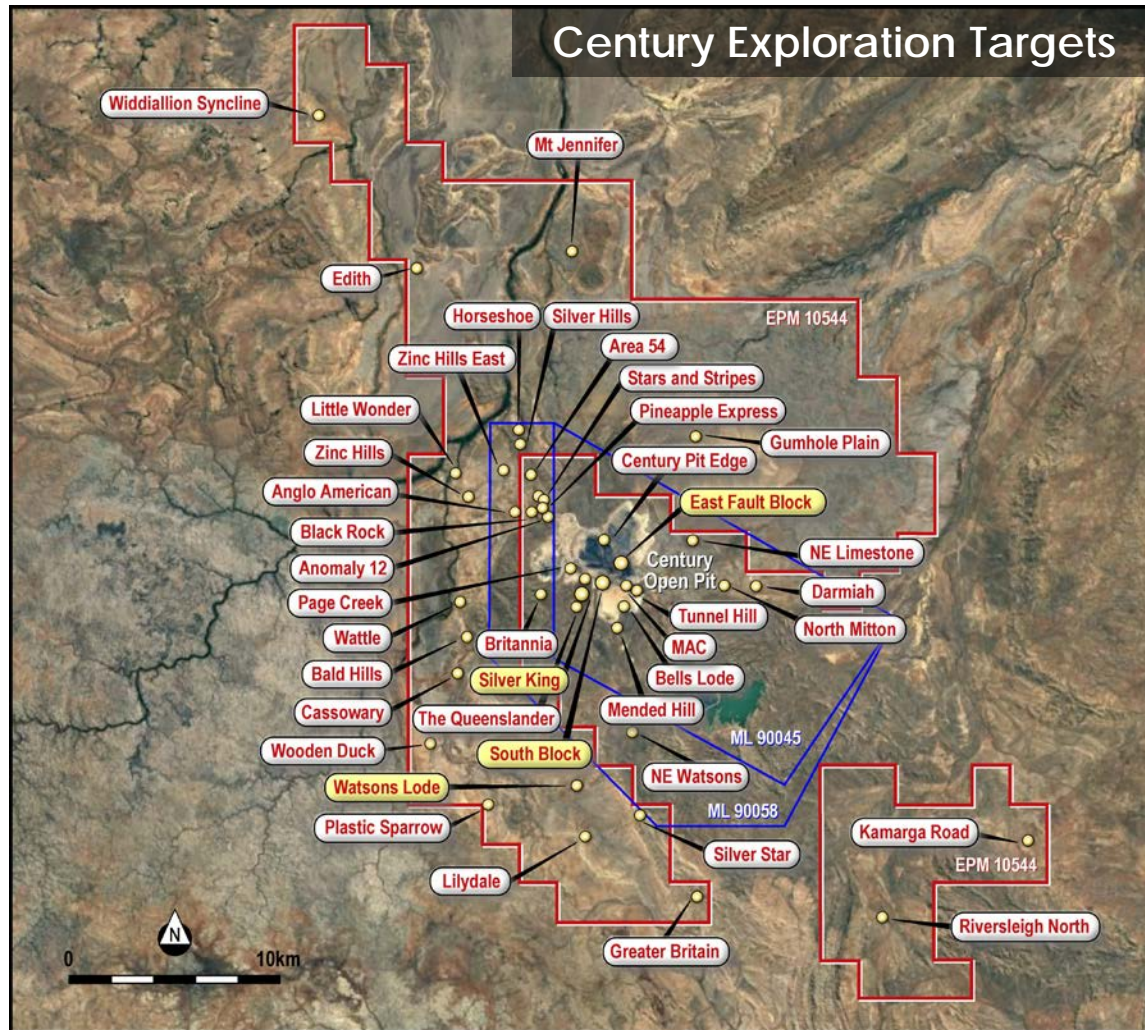
East Fault Block	Tonnes (Mt)	Zinc (%)	Lead (%)	Silver (g/t)	ZnEq Metal (t)
Total (Inferred)	0.52	11.6	1.1	48	64,000

- Located adjacent to existing open pit
- Resource begins at 35m, extending to 112m
- Simple open pit operation
- Identical mineralisation to adjacent 'Big Zinc' ore



Insitu Resources: Exploration Potential

COMPLETE HISTORICAL EXPLORATION DATABASE ACQUIRED – REVIEW OF DATA UNDERWAY



- Historical focus on exploration for another 'Big Zinc' ore body (>25Mt deposits)
- >40 high grade vein style deposits (e.g. Silver King) identified
- Vein style deposits represent suitable blending material for tailings ops
- Significant phosphate mineralisation identified (14,000m of drilling under review)
- New Century planning to be very active in exploration and definition of existing targets



NEW CENTURY
RESOURCES

Contact

Patrick Walta

Managing Director

info@newcenturyresources.com

New Century Resources Limited

Head Office: Level 9, 350 Collins Street, Melbourne VIC 3000

Perth Office: Suite 23, 513 Hay Street, Subiaco WA 6008

www.newcenturyresources.com