

# ATRUM COAL – PANORAMA NORTH 2017 EXPLORATION UPDATE

## HIGHLIGHTS

- Second drilling program concludes at Panorama North.
- Field mapping work encountered multiple at-surface anthracite coal seams.
- Two drill rigs completed 1,227 metres of fully cored diamond drilling at five sites.
- Shallow coal seams intersected in the drill holes.

Atrum Coal Limited (“**Atrum**” or the “**Company**”) (ASX: ATU), along with its joint venture partner Japan Oil, Gas and Metals National Corporation (“**JOGMEC**”), are pleased to provide an operational update for the Company’s Panorama North Anthracite Project (“**Panorama North**”), located in British Columbia, Canada.

Recently appointed Managing Director and Chief Executive Officer, Max Wang commented: *“Following our initial exploration in 2016, we have completed our second drilling programme at Panorama North. We are happy to announce that we have intersected multiple thick, near surface anthracite coal seams.*

*“We have now completed the field work, with coal samples being sent for testing. Our exploration team led by Senior Geologist, Daniel Campbell will review the results and complete a structural interpretation of the Panorama North deposit. Once again, we are thankful to our Aboriginal partners for their support in the field work.”*

## EXPLORATION AND DRILLING AT PANORAMA NORTH

Panorama North is an area to the west of Groundhog North (refer Figure 1). In the 1980’s a number of trenches encountered anthracite, but no drilling was undertaken. During 2016, the Company formed a Joint Venture with JOGMEC in order to undertake a preliminary exploration programme, including diamond core drilling, and extensive surface mapping of coal and rock outcrop.



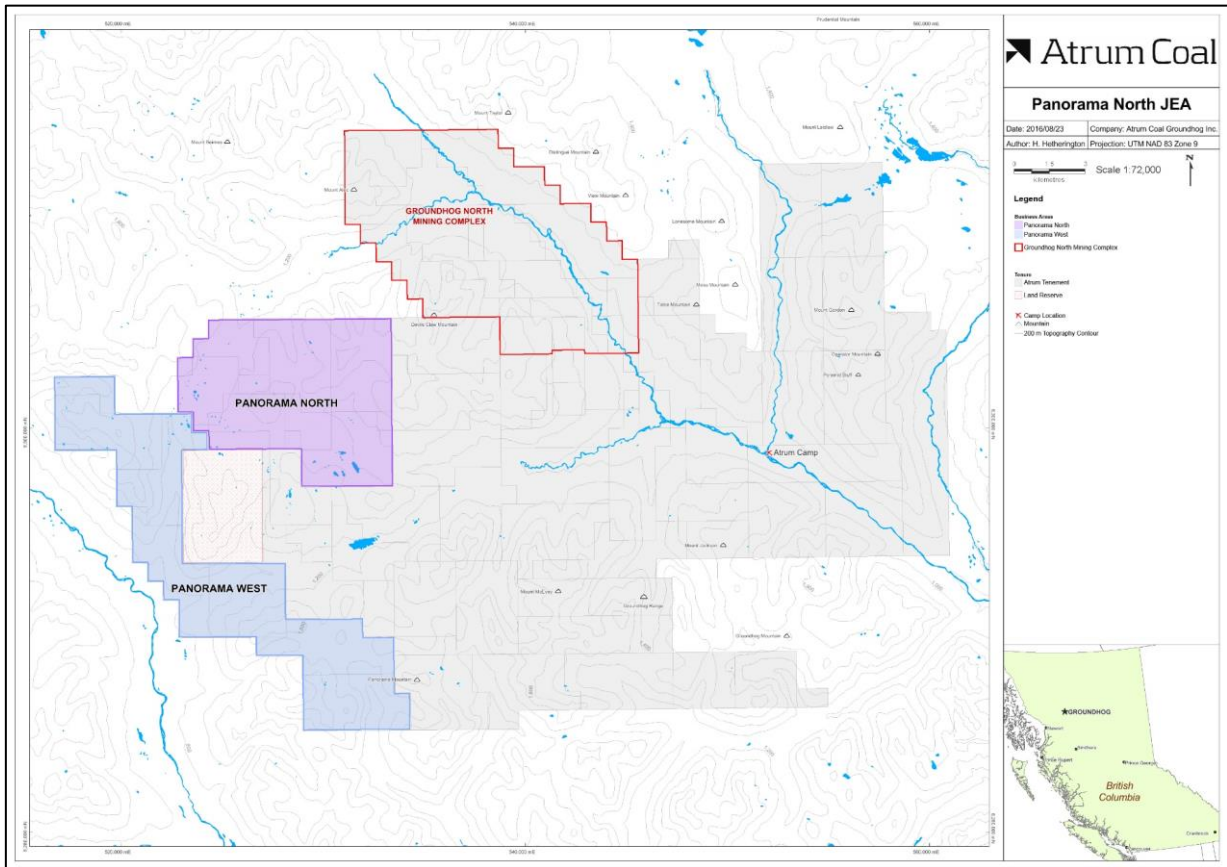
**Registered Office**  
Level 19, 1 O’Connell St,  
Sydney, NSW, 2000  
**T** +61 2 8249 1884  
**E** info@atrumcoal.com  
[www.atrumcoal.com](http://www.atrumcoal.com)

### Board of Directors

Chairman	C. Blixt
Non-Executive Director	J. Chisholm
Non-Executive Director	G. Edwards
Non-Executive Director	C. Fear
Company Secretary	J. Stedwell

### Key Projects

Groundhog	Ownership: 100%
Naskeena	Ownership: 100%
Bowron River	Ownership: 100%



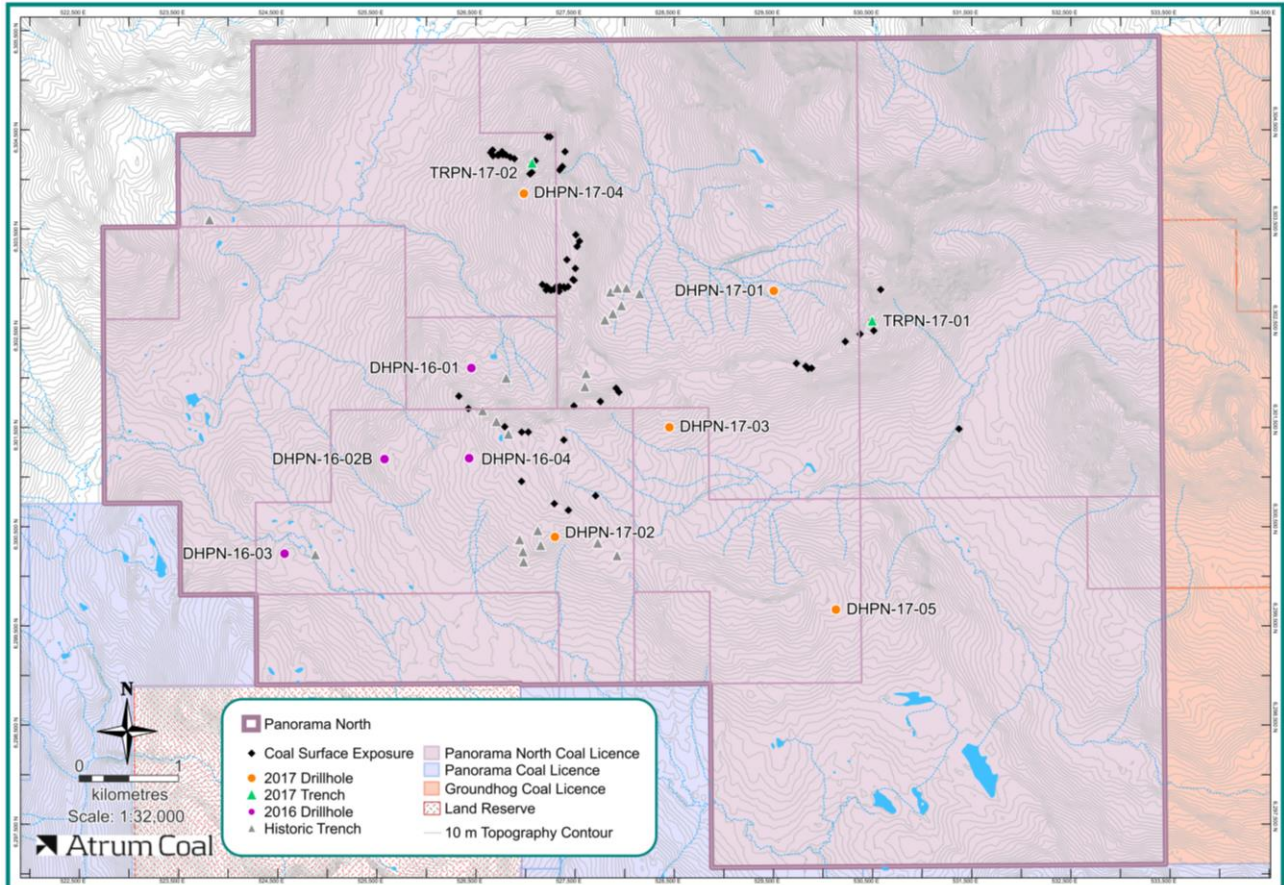
**Figure 1: Panorama North Location**

In August 2017, JOGMEC and the Company mobilised two drilling rigs and associated geophysical logging equipment to Panorama North to conduct the second exploration programme. Seams intersected in the 2016 drilling season provided references for the 2017 wide-spaced drilling, which was designed to broaden the area of resource identified, as well as depict the structural setting for Panorama North (refer Figure 2). Diamond core drilling of five sites has been successfully completed, as well as an extensive surface mapping programme that identified several coal seams at surface (refer Figure 3). Thick, near surface coal seams have again been intersected in the drill holes. All holes have been geophysically logged, and we are now completing studies of the cores and conducting geological interpretation.

<b>Drill Hole ID</b>	<b>Total Depth</b>	<b>Total Coal</b>	<b>Thickest Seam</b>
DHPN-17-01	317.0 m	9.99 m	2.43 m
DHPN-17-02	219.5 m	7.20 m	0.97 m
DHPN-17-03	286.5 m	11.62 m	3.80 m
DHPN-17-04	156.0 m	4.99 m	1.98 m
DHPN-17-05	248.5 m	3.39 m	0.70 m

**Table 1: Initial drill hole results from Panorama North**

Coal samples have been sent to a laboratory in Calgary for testing and analysis. Although results from the lab are not yet available, visual inspection results are encouraging, with cores having similar visible properties as the samples taken from the 2016 drilling programme.



**Figure 2: Panorama North Drill Hole Locations**



**Figure 3: Panorama North 2017 Trench Location, TRPN-17-01**

**For further information, contact:**

**Max Wang**  
Chief Executive Officer  
**M** +1 403-973-3137  
[mwang@atrumcoal.com](mailto:mwang@atrumcoal.com)

**Justyn Stedwell**  
Company Secretary  
**M** +61 3 9191 0135  
[jstedwell@atrumcoal.com](mailto:jstedwell@atrumcoal.com)

**Nathan Ryan**  
Investor Relations  
**M** +61 420 582 887  
[nathan@atrumcoal.com](mailto:nathan@atrumcoal.com)