

SECOND RIG AT GARDEN GULLY

Thundelarra is pleased to announce that a reverse circulation drilling rig has commenced follow-up drilling at the Lydia Prospect at the Garden Gully Gold Project.

The reverse circulation (“RC”) drill rig collared the first hole of the follow-up programme at Lydia and drilling is now well underway.

This programme is designed to comprise approximately 13 holes for a total advance of about 3,000 – 3,500m although the final number of holes and the total metreage drilled may change depending on the data generated as the programme progresses.



Figure 1. Reverse Circulation drill rig at Lydia Prospect, Garden Gully.

It is expected that as the holes are drilled and logged, several will warrant completion or continuation by diamond tails. Approximately 1,000m of diamond tails are contemplated over a number of holes as our understanding of the geology and controlling structures grows at Lydia.

About Garden Gully.

Thundelarra’s wholly-owned Garden Gully project comprises 15 granted Prospecting Licences and 2 granted Exploration Licences covering about 78 square kilometres, located in Western Australia’s Murchison region about 20 kilometres north-west of the town of Meekatharra.

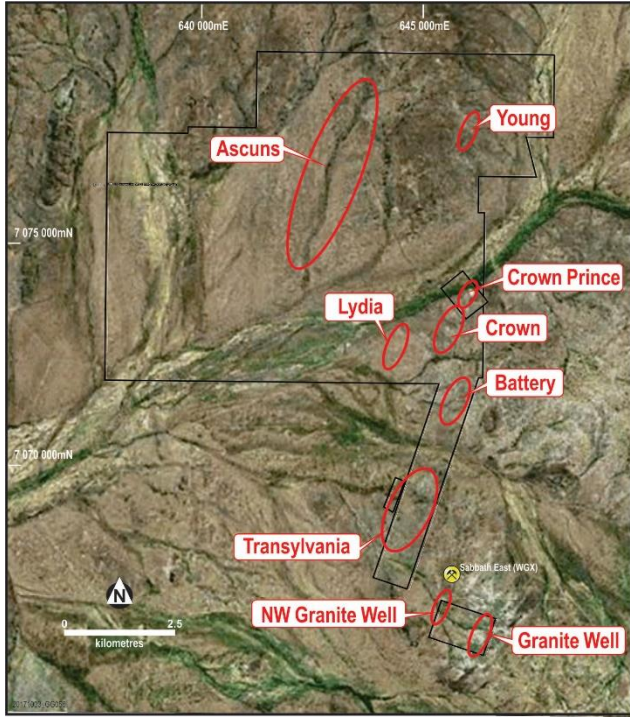


Figure 2. Garden Gully prospects on LandSat image.

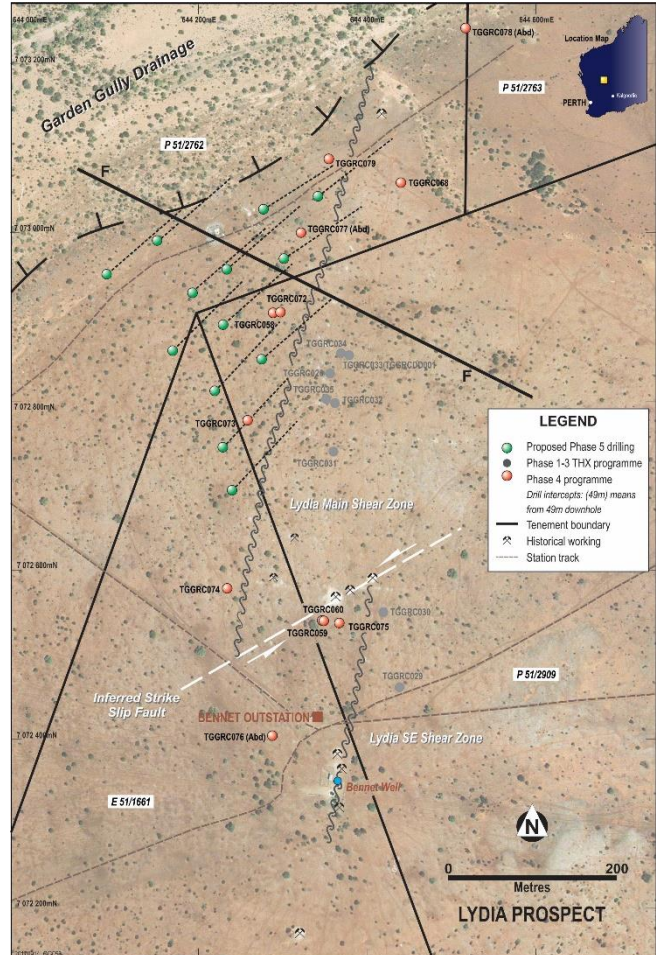


Figure 3. Lydia Prospect detail.

Since commencing exploration at Garden Gully in mid-2016, Thundelarra has drilled 85 reverse circulation holes for 13,721m advance and 2 diamond holes for 788m advance.

For Further Information Contact:
Mr Tony Lofthouse - Chief Executive Officer
+61 8 9389 6927

THUNDELARRA LIMITED	ASX Code
Quoted Shares: 635.1M	THX
Quoted Options: 109.3M	THXOB