



excelsiorgold
LIMITED

Kalgoorlie North Gold Project

October 2017 Investor Presentation

Disclaimer



Forward Looking Statements Caution

Certain statements contained in this document constitute forward looking statements. Such forward-looking statements are based on a number of estimates and assumptions made by the Company and its consultants in light of experience, current conditions and expectations of future developments which the Company believes are appropriate in the current circumstances. These estimates and assumptions while considered reasonable by the Company are subject to known and unknown risks, uncertainties and other factors which may cause the actual results, achievements and performance of the Company to be materially different from the future results and achievements expressed or implied by such forward-looking statements. Investors are cautioned that forward looking information is no guarantee of future performance and accordingly, investors are cautioned not to place undue reliance on these forward-looking statements.

Competent Person Statement – Exploration Results and Mineral Resources

Information in this announcement that relates to Mineral Resource and exploration results is based on information compiled by **Mr. Bradley Toms** who is the Exploration Manager of Excelsior Gold Limited. Mr. Toms is a Member of The Australian Institute of Geoscientists and has sufficient experience which is relevant to the style of mineralisation and type of deposit under consideration and to the activity that he is undertaking, to qualify as Competent Person as defined in the 2012 Edition of the “Australasian Code for Reporting of Exploration Results, Mineral Resources and Ore Reserves”. Mr. Toms consents to the inclusion in the document of the information in the form and context in which it appears.

Information in this announcement that relates to the Zoroastrian Mineral Resource and Bulletin South Mineral Resource results is based on information compiled by **Mr. Patrick Adams** who is a Director of Cube Consulting Pty Ltd. Mr. Adams is a Fellow of the AusIMM (CP) and a Member of The Australian Institute of Geoscientists and has sufficient experience which is relevant to the style of mineralisation and type of deposit under consideration and to the activity that he is undertaking, to qualify as Competent Person as defined in the 2012 Edition of the “Australasian Code for Reporting of Exploration Results, Mineral Resources and Ore Reserves”. Mr. Adams consents to the inclusion in the document of the information in the form and context in which it appears.

Competent Persons Statements – Ore Reserves Zoroastrian Central Open Pit

The information in this Release which relates to the Ore Reserve estimates accurately reflect information prepared by Competent Persons (as defined by the Australasian Code for Reporting of Exploration Results, Mineral Resources and Ore Reserves). The information in this public statement that relates to the Zoroastrian Central Open Pit Ore Reserve at the Excelsior Gold Kalgoorlie North Gold Project is based on information resulting from Feasibility works carried out by Excelsior Gold Limited. **Mr. Randell Ford**, who is employed by Excelsior Gold Limited and works at the Zoroastrian South and Bulletin South Ore Reserve open pit as the Registered Mine Manager, completed the Ore Reserve estimate for the Zoroastrian Central Open Pit. Mr Ford is a Member of the Australasian Institute of Mining and Metallurgy and has sufficient experience that is relevant to the style of mineralisation and type of deposit under consideration and to the activity that he is undertaking to qualify him as a Competent Person as defined in accordance with the 2012 Edition of the Australasian Joint Ore Reserves Committee (JORC). Mr Ford consents to the inclusion in the document of the information in the form and context in which it appears.

Highlights



- Fully recovered from “near death experience” – no longer burdened by debt, hedging and underperforming resource model
- Board and Management restructured
- \$30m of debt and other liabilities extinguished in 11 months
- Mining of Zoroastrian Central open pit successfully completed
- Cash reserves estimated at \$7M
- Multi-stage operational strategy in place to rebuild mine plan through conversion of existing resources to reserves and new exploration initiatives to grow the 872,000oz Mineral Resource base and test for “game changer” discoveries
- Fully funded +33,000m resource expansion, reserve conversion and exploration drill program underway



ASX Code: EXG

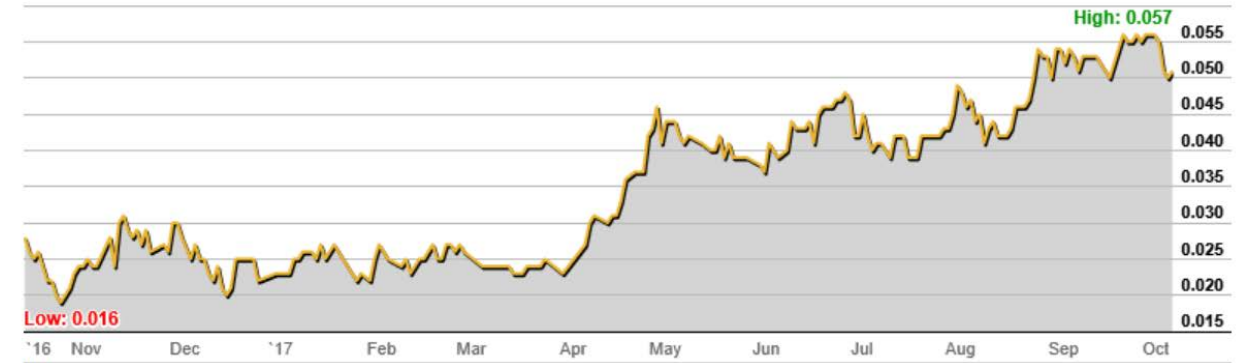
Corporate Overview



excelsiorgold
LIMITED

Board and Management

David Hatch	Non-executive Chairman (mining, corporate)
Rowan Johnston	Managing Director (engineering, mine management, corporate)
Jimmy Lee	Non-executive Director (mining engineering, mine & contractor management, corporate strategy)
Sam Randazzo	Non-executive Director (accounting, finance, public company & operations management)
Dr Jonathan West	Non-executive Director (geology, administration, strategic planning)



Financial Information

Share price (11-October-17)	A\$0.051
Number of shares	812.3M
Market capitalisation	A\$41.5M
Cash	~\$7M

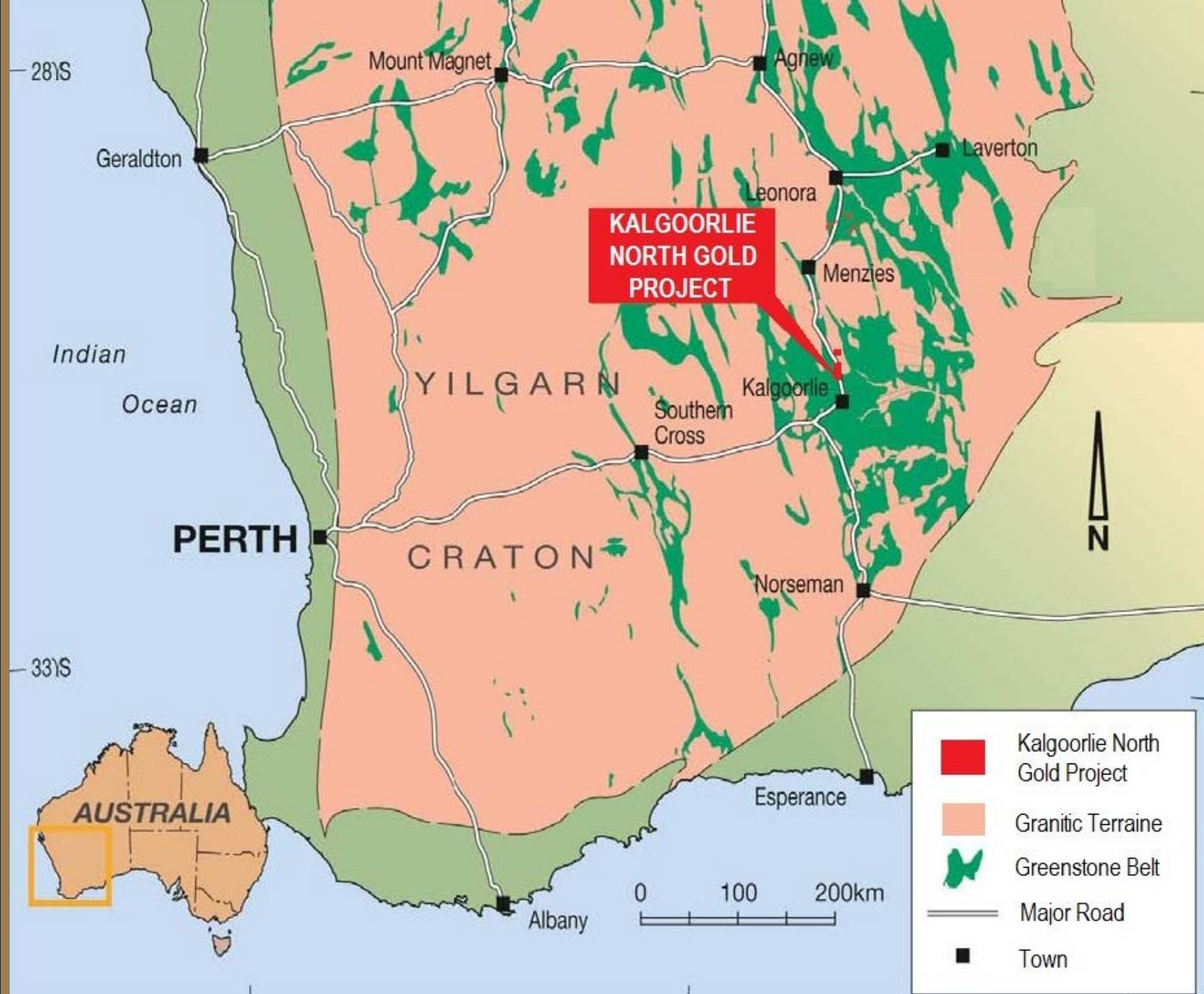


ASX Code: EXG



ASX Code: EXG

Kalgoorlie North Gold Project “KNGP”

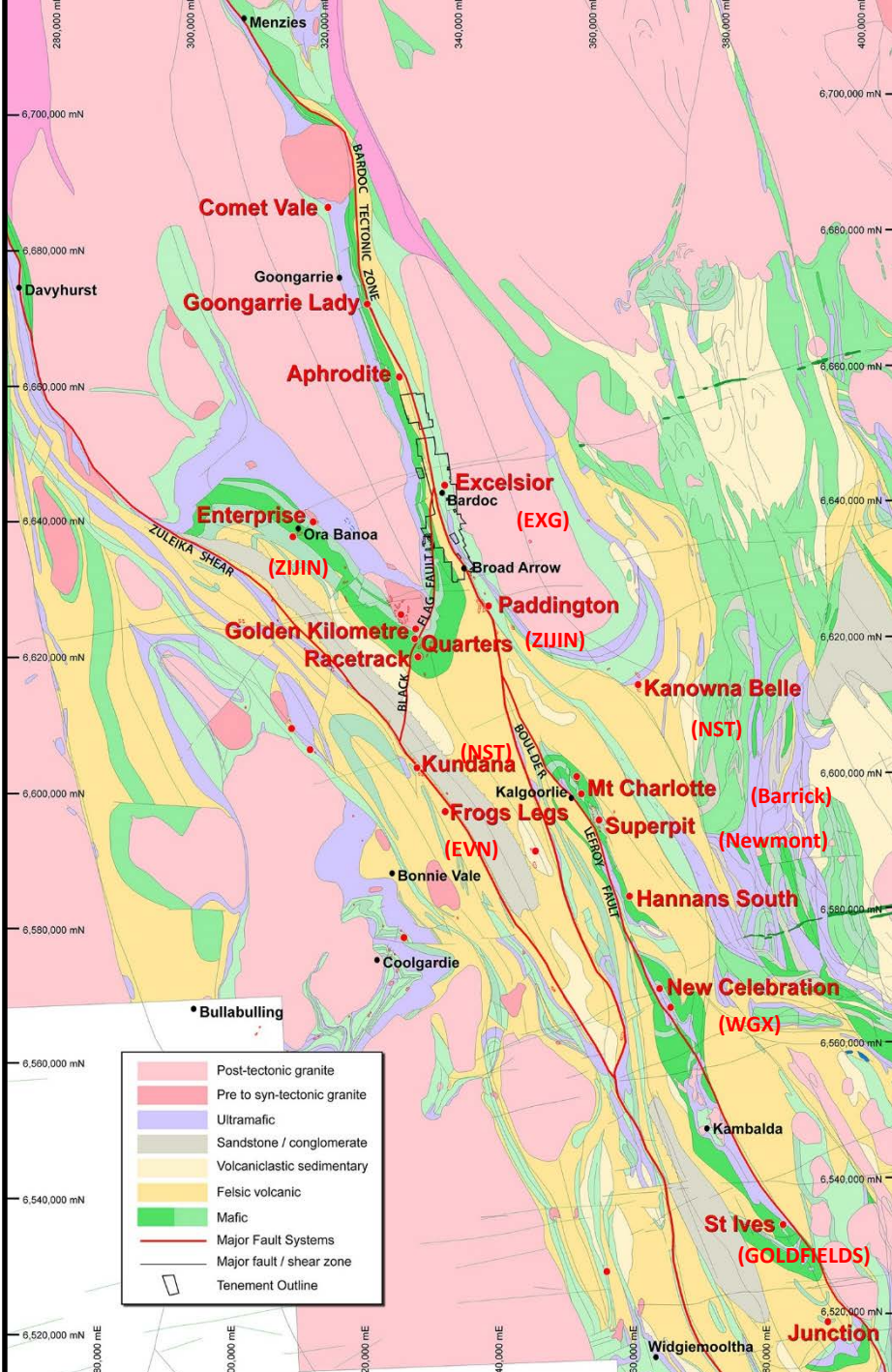




excelsior gold
LIMITED

KNGP Regional Setting

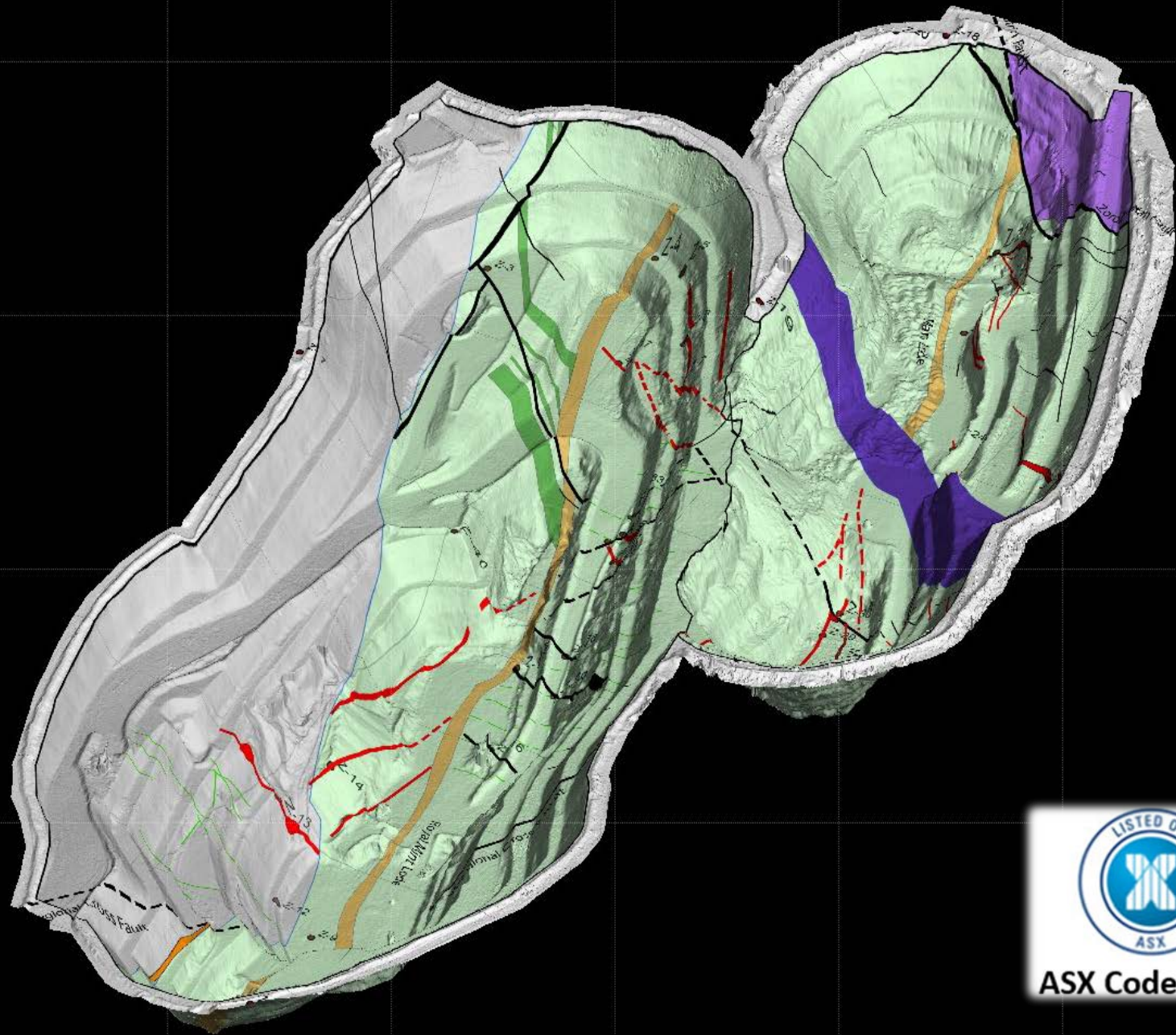
- Strategically located along prolific Norseman–Wiluna greenstone belt at the junction of deep seated crustal structures hosting multi-million ounce gold deposits to the immediate south
- Recent Company sponsored MSc degree in conjunction with CSIRO concluded Zoroastrian Dolerite is similar to other high gold endowment dolerites eg. Golden Mile, St Ives, Paddington



ASX Code: EXG

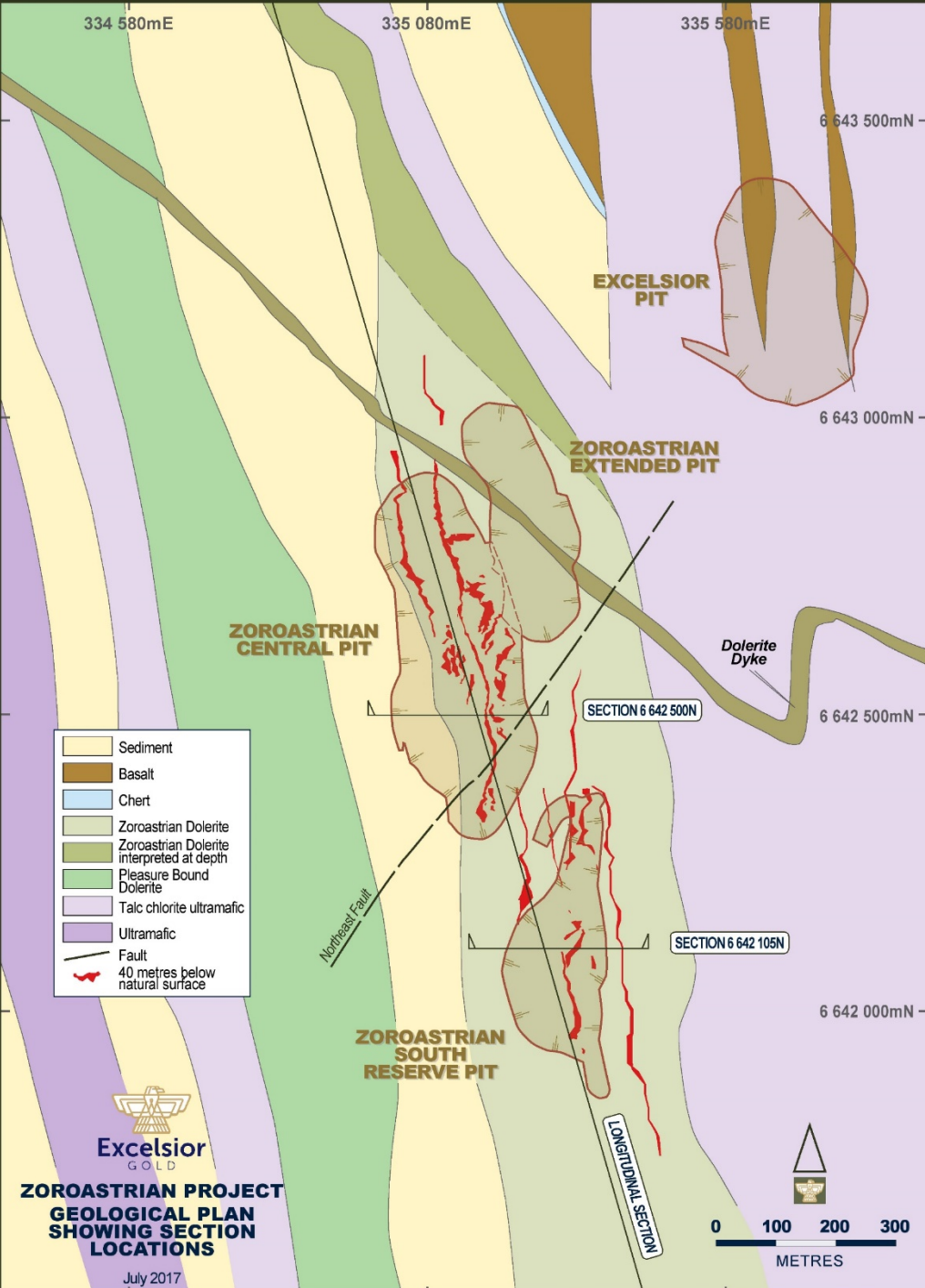
New Approach to Exploration

- Exploration driven by science and purposeful drill testing
- Targeting via CSIRO – Innovation Connection joint program
- Innovative modelling of geology, structure and geophysical datasets (gravity, fluid flow and aeromagnetic)
- Relogging of drill core including pXRF and TIMA analysis
- Downhole photography
- Excellent potential for discovery of significant gold deposits at depth through drill testing



New Approach to Resource Estimation

- Robust wireframes based on input from:
 - Mining
 - Batch treatment and mill reconciliations
 - In-pit structural mapping (supported by CSIRO)
 - Extensive grade control drilling (7.5m x 5m)
 - Relogging core and pXRF analysis
 - Down hole photography
 - Robust wireframes are being generated, that will better reflect what's in the ground
- Localised uniform conditioning (LUC) modelling best interprets grade at a selective mining size (SMU) and appears to work well for the Zoroastrian deposit
- Wireframing and modelling done in house and is externally audited by an independent expert before release to the market



Zoroastrian & Excelsior pit



- Almost 80% of the current resource is associated with the Excelsior and Zoroastrian deposits
- Focus of resource definition drilling and modelling will be on these two deposits
- Mining of the Excelsior deposit will require re-routing of the highway and railway



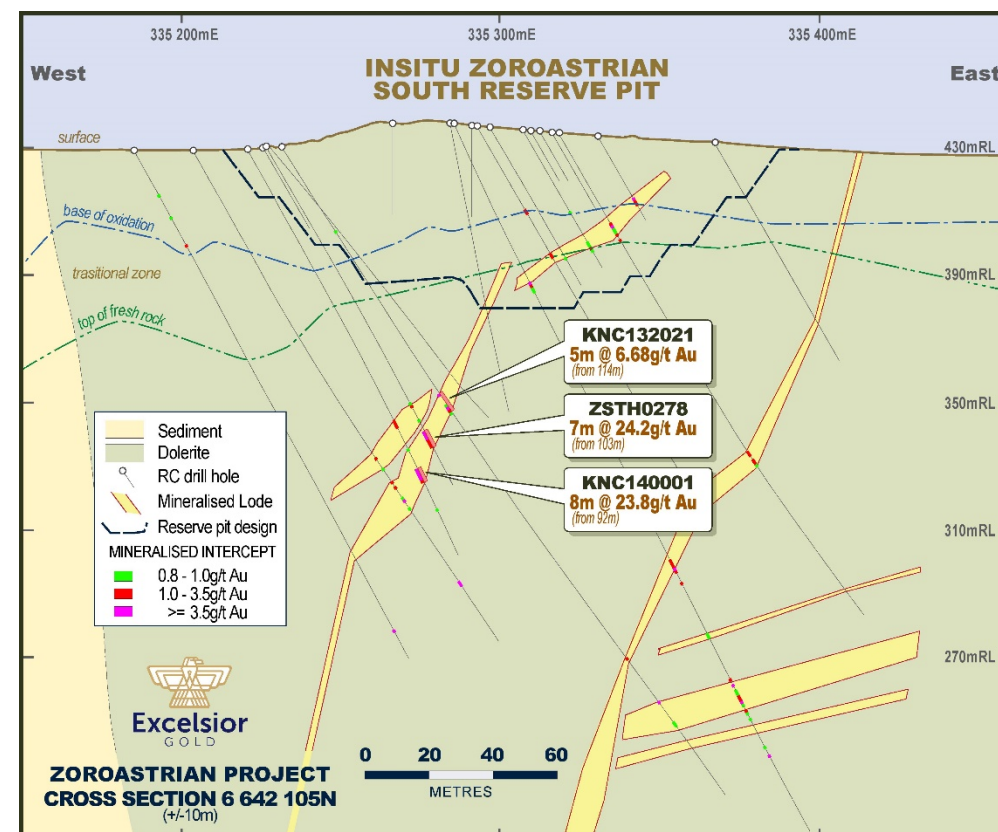
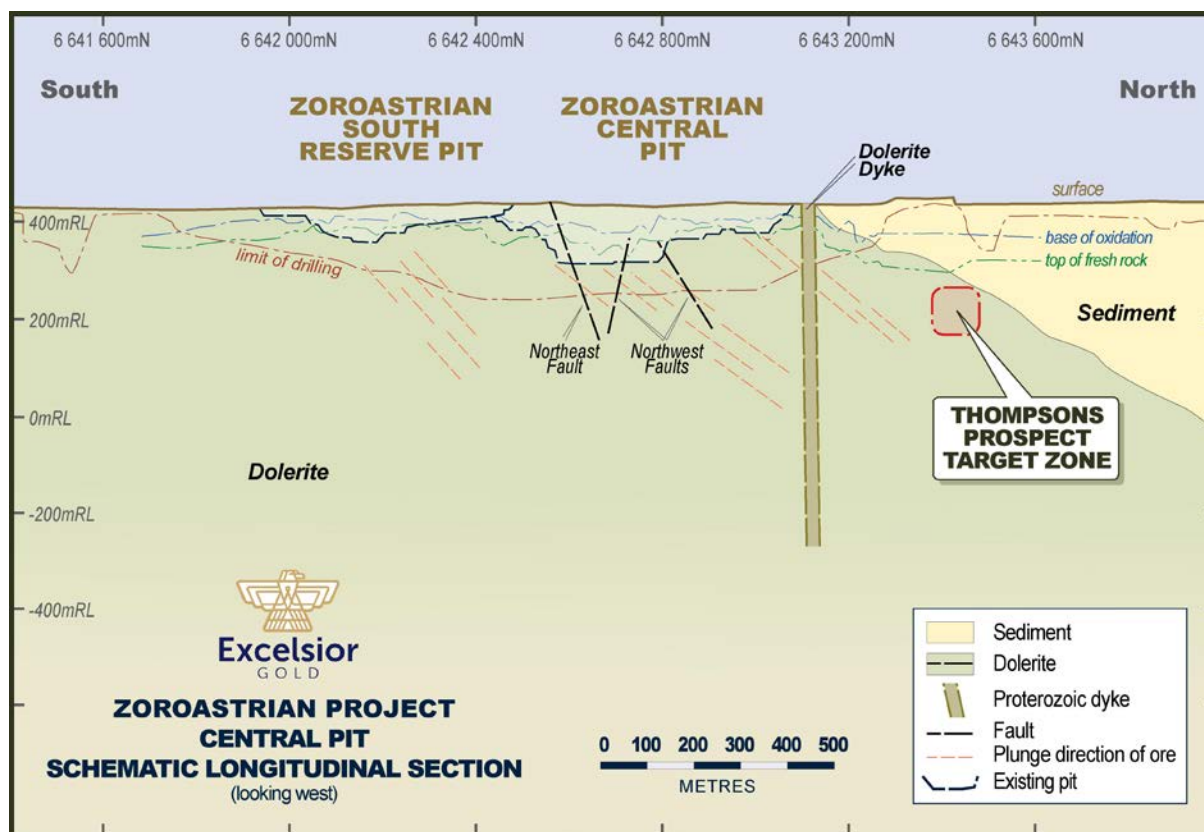
ASX Code: EXG



excelsior gold
LIMITED

Zoroastrian underground potential

- Relatively shallow drilling
- Mining and modelling of Zoroastrian deposit has indicated the existence of high grade, north-plunging shoots



Summary



- Single project focus in Australia's most prolific gold region at intersection of 2 major, deep seated crustal structures
- Debt free, 100% ownership
- Experienced management in place - financial controls, corporate governance, exploration & mining expertise
- 872,000oz Mineral Resource base available for conversion to reserves
- Multiple drill ready exploration targets
- Fully funded 33,000m drill program underway



ASX Code: EXG

Thank You

For further information visit www.excelsiorgold.com.au or contact **Excelsior Gold Limited:**

Rowan Johnston
Managing Director
T + 61 8 9335 7770
E rjohnston@excelsiorgold.com.au

David Hatch
Chairman
T +61 8 9335 7770
E dhatch@excelsiorgold.com.au

ASX: EXG



excelsiorgold
LIMITED



ASX Code: EXG

Appendix – KNGP Mineral Resources

KALGOORLIE NORTH GOLD RESOURCES		MEASURED			INDICATED			INFERRED			TOTAL RESOURCES			Original ASX report date
Deposit	Cut-Off (g/t Au)	Tonnes (,000t)	Grade (g/t Au)	Ounces (,000oz)	Tonnes (,000t)	Grade (g/t Au)	Ounces (,000oz)	Tonnes (,000t)	Grade (g/t Au)	Ounces (,000oz)	Tonnes (,000t)	Grade (g/t Au)	Ounces (,000oz)	
Excelsior	0.6	5,175	1.4	232	3,230	1.2	125	2,652	1.2	99	11,057	1.3	456	12-Apr-12
Zoroastrian (O/P)	0.6	24	3.4	3	605	1.6	31	868	1.5	41	1,498	1.5	75	14-Oct-16
Zoroastrian (U/G)	3.0				737	4.8	114	218	4.7	33	955	4.8	147	6-Jul-15
Zoroastrian (Total)		24.0	3.4	2.6	1,342	3.4	146	1,086	2.1	74	2,453	2.8	223	
Lochinvar	0.6				448	1.7	25	60	1.7	3	508	1.7	28	19-Feb-14
Nerrin Nerrin	0.6				74	2.4	6	107	2.4	8	181	2.4	14	15-Nov-13
Ophir	0.6							75	1.9	5	75	1.9	5	11-Dec-13
Vettersburg South	0.6							552	1.5	26	552	1.5	26	11-Dec-13
Total Satellite Resources					522	1.8	31	793	1.6	42	1,315	1.7	73	
Other Resources (greater than 4km from Excelsior)														
Eldorado	0.6				362	1.6	19	31	1.4	1	393	1.6	20	11-Sep-13
Talbot North *	0.6							662	1.7	36	662	1.7	36	31-Mar-10
Bulletin South	0.6	38	1.9	2	482	2.3	35	125	2.4	10	645	2.3	47	23-Jan-17
Windanya	0.6							360	1.5	17	360	1.5	17	11-Dec-13
Total Other Resources		38.2	1.9	2.3	844	2.0	54	1,178	1.7	64	2,061	1.8	120	
TOTAL RESOURCES		5,237	1.4	237	5,938	1.9	355	5,710	1.5	279	16,885	1.6	872	

*This information was prepared and first disclosed under the JORC Code 2004. It has not been updated since to comply with the JORC Code 2012 on the basis that the information has not materially changed since it was last reported.

Differences may occur to rounding.

The Bulletin South and Zoroastrian Open Pit resources are reported within an A\$2,750 per ounce gold price pit shell. Other resources are reported above applicable depths below surface.