

Norwest Energy NL

Mid West Economic Summit
Geraldton, Western Australia
26 October 2017



SHELLEY ROBERTSON
Chief Executive Officer



norwest
ENERGY NL

- The information contained in this Presentation or subsequently provided to the Recipient of this Presentation whether orally or in writing by or on behalf of Norwest Energy NL ("NWE") or their respective employees, agents or consultants ("Information") is provided to the Recipients on the terms and conditions set out in this notice.
- The Presentation contains reference to certain intentions, expectations and plans of NWE. Those intentions, expectations and plans may or may not be achieved. They are based on certain assumptions which may not be met or on which views may differ. The performance and operations of NWE may be influenced by a number of factors, many of which are outside the control of NWE. No representation or warranty, express or implied, is made by NWE or any of its respective directors, officers, employees, advisers or agents that any intentions, expectations or plans will be achieved either totally or partially or that any particular rate of return will be achieved.
- The Presentation does not purport to contain all the information that any existing or prospective investor may require. It is not intended to be a complete or accurate statement of material information. In all cases, before acting in reliance on any information, the Recipient should conduct its own investigation and analysis in relation to the business opportunity and should check the accuracy, reliability and completeness of the Information and obtain independent and specific advice from appropriate professional advisers.
- The Recipient should not treat the contents of this Presentation as advice relating to legal, taxation or investment matters and should consult its own advisers. NWE and its advisers take no responsibility for the contents of the Presentation.
- NWE makes no representation or warranty (express or implied) as to the accuracy, reliability or completeness of the information. NWE and its respective directors, employees, agents and consultants shall have no liability (including liability to any person by reason of negligence or negligent misstatement) for any statements, opinions, information or matters (express or implied) arising out of, contained in or derived from, or for any omissions from the Presentation, except liability under statute that cannot be excluded.
- NWE is not aware of any new information or data that materially affects the information included in any market announcement referenced throughout the Presentation and that all material assumptions and technical parameters underpinning the estimates in the relevant market announcement continue to apply and have not materially changed.

Norwest Energy N.L.

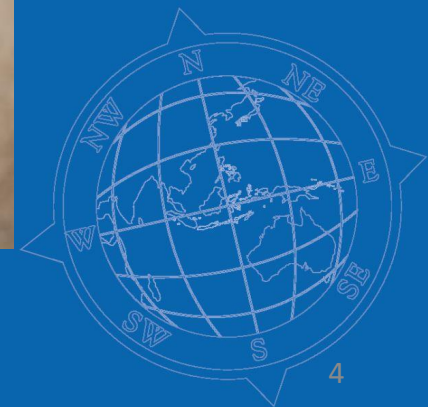
A Junior Exploration Company

Listed on the Australian Stock Exchange for 20 years



ASX:NWE

Corporate Snapshot



Board & Management



Michael Fry, Non-Executive Chairman



- Extensive experience in capital markets and corporate treasury, specialising in risk management.
- Non-Executive Chairman of Brookside Energy and Challenger Energy Limited.

Shelley Robertson, Chief Executive Officer



- Significant senior management experience in the resources industry with 25+ years experience in O&G, mining, infrastructure and renewables.
- On the senior management team since 2010.
- BSc(Eng), GradDip(IT), MEngSc(Pet Eng), MBA(Oil & Gas), SPE & PESA Membership.
- Board Member Telethon T1D Family Centre
- Order of Australia Bravery Medal 2006

David Kennedy, Non-Executive Director



- Founding Shareholder & Director of NWE.
- Long association with Australian and New Zealand resource companies.
- Established several successful listed companies (Pan Pacific Petroleum, NZ Oil & Gas, Mineral Resources and Otter Exploration). Chairman of Pancontinental Oil and Gas NL.

Ron Currie, Non-Executive Director



- Extensive operational experience in O&G operations with Bonnie Rock Transport, a company he co-founded in 1998 and which provides transport and logistics solutions and mobilisation of large drilling rigs and associated equipment for the O&G industry.

Jim Tarlton, Board Advisor



- 30+ years of oil and gas experience in drilling, production, reservoir engineering and asset management.
- Technical Director, Tamarind Resources.
- Previous VP Operations, Talisman Energy Malaysia.
- Co-Founder and Director of Well Experts Services
- BA Science (Honours) in Chemical Engineering from Queen's University, Canada.

Jo-Ann Long, CFO & Company Secretary



- Corporate Finance Executive and CA with over 25 years of experience in building, leading and advising corporations on financial management, restructures, international expansion, acquisitions and risk management
- Strong expertise in JV management, tax strategies and governance.
- Member of the Australian Institute of Company Directors

NORWEST ENERGY HIGHLIGHTS



- Strong focus on Mid West and northern Perth Basin
- Portfolio of assets with significant exploration potential and exciting opportunities for development and growth
- Excellent safety culture
- Collaborative relationships with local communities and Traditional Owners



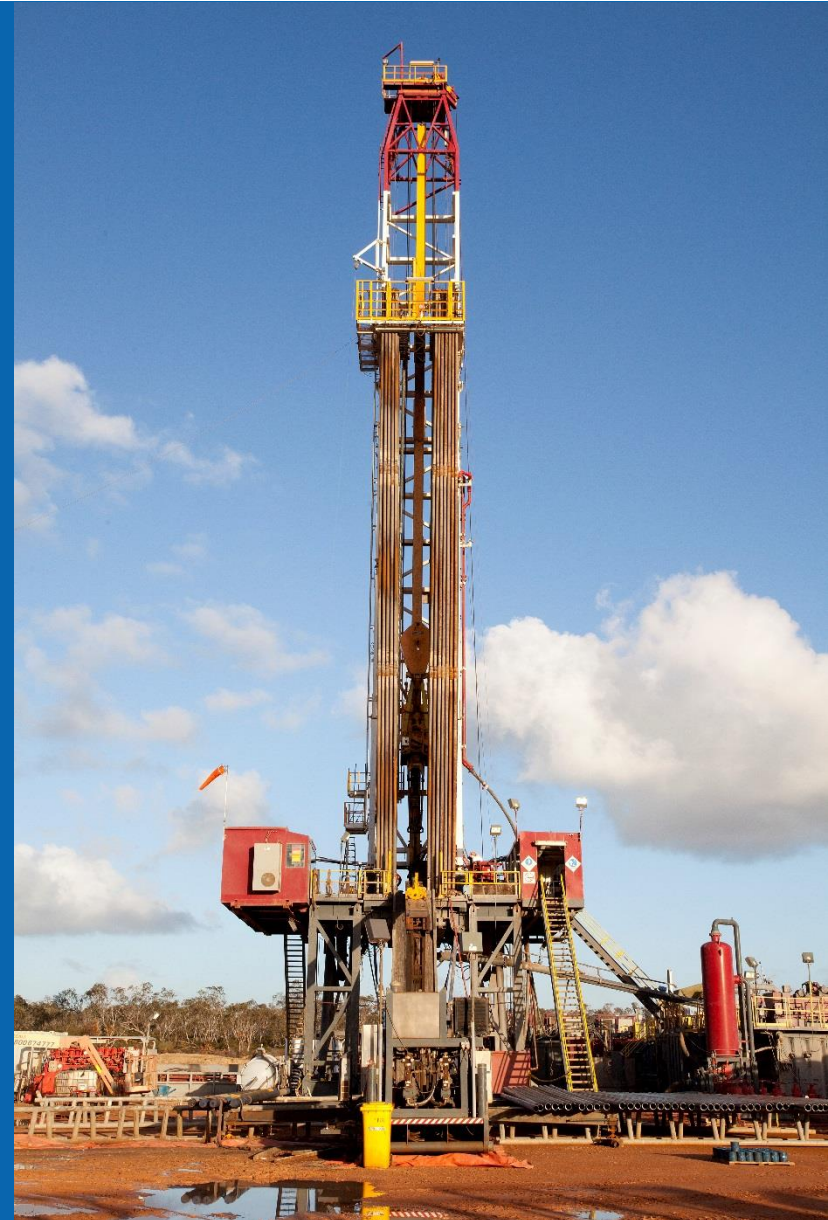
*Amangu Spiritual Smoking Ceremony
Xanadu-1 Drilling Location, 2 September 2017*

Maintaining Strong Foundations for Growth

NORWEST ENERGY STRENGTHS



- Experienced management team
- Actively seeking funding and partners to participate in exploration programs
- Strong relationships with JV partners and other Perth Basin operators allowing for collaboration to achieve common goals
- Projects strategically located close to pipelines, infrastructure and markets
- Significant cost savings implemented resulting in increased efficiencies provide a greatly enhanced value proposition to shareholders
- Member of MWCCI



NORWEST ENERGY STRATEGY



- Think smart – be innovative
- Develop collaborative partnerships
- Exhibit best practice operations
- Maintain positive relationships with all stakeholders
- Every dollar counts. Work hard to keep costs down by capitalising on current low cost environment



NORWEST ENERGY PARTNERS WITH THE LOCAL COMMUNITY

- Norwest values the local community and appreciates the support from local businesses
- Contributed over \$5M to the local community over the past 5 years in project delivery
- Norwest supports local events, charities and community groups.

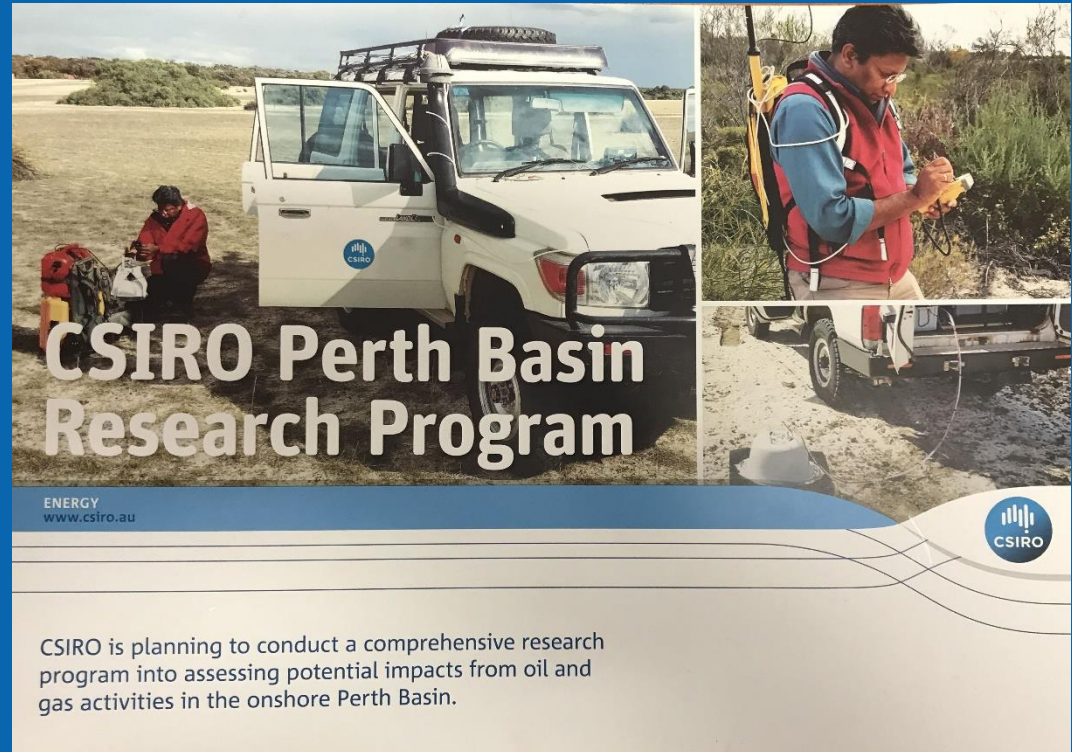


*Artwork purchased by Norwest Energy in support of
local YUED indigenous artists*

DONATIONS & SPONSORSHIP RECIPIENTS

Police Down Under Magazine
Royal Flying Doctor Service
Shire of Irwin - Rates Prize
Police Down Under Magazine
Eneabba Primary School P & C
Eneabba Primary School P & C - Hamper
Shire of Irwin - Rates Prize
Dongara Golf Club Inc
Dongara Horseriding Club - Fence
WA Special Needs Childrens Xmas Party
The Beacon Centre, Musgrove Park Hospital
Shire of Irwin - Rates Prize
Dongara Golf Club Inc
Eneabba Primary School P & C
Perth Special Childrens Christmas Party
Dongara Golf Club Inc
Eneabba Primary School P & C
Indian Ocean Festival Inc
Shire of Irwin - Rates Prize
Irwin District Charity Ball
Shire of Irwin - Larry Lobster Festival

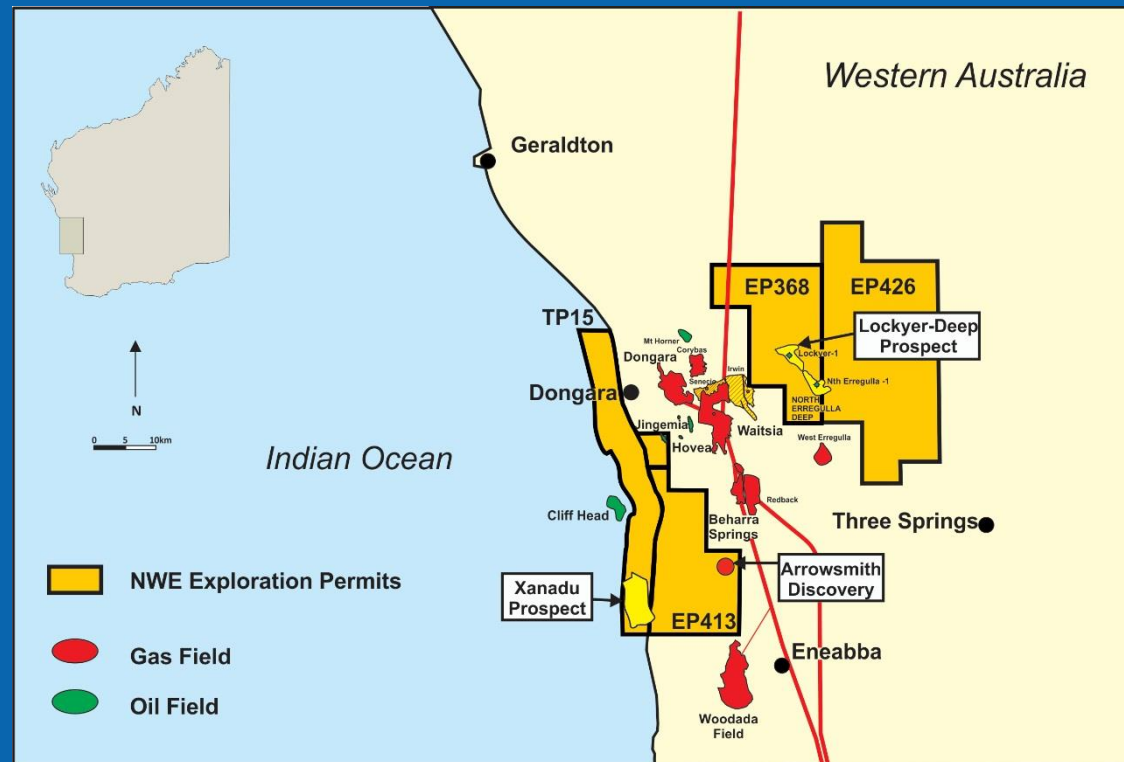
- Excellent safety culture
- Committed to best practice operations to preserve pristine local environment
- Involved in ongoing CSIRO Baseline Monitoring Project monitoring seismic, water and air quality



NORWEST ENERGY PROJECTS



- Interest in five key permits within the northern Perth Basin
- Projects strategically located, flanking the belt of existing discoveries and producing oil and gas fields
- An intensive exploration program planned for 2018 and beyond



TP/15

Xanadu Prospect

Joint Venture

Norwest Energy	Operator	25%
Triangle (Global) Energy		30%
3C Group		30%
Whitebark Energy		15%

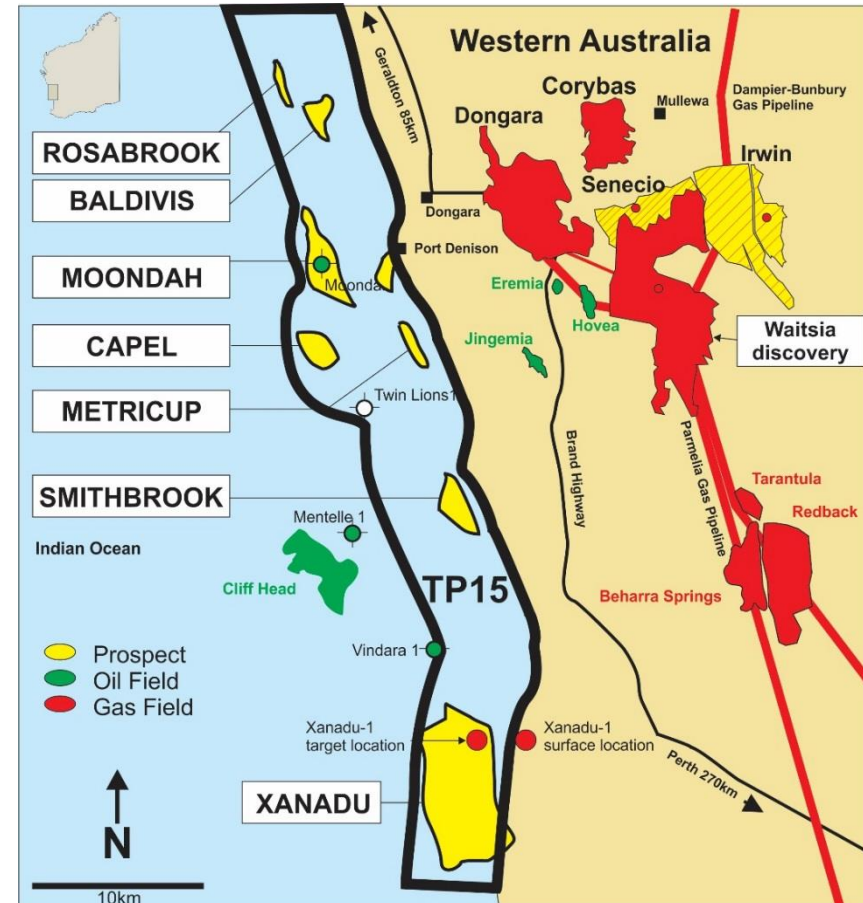


Xanadu-1 Drilling Location, 11 September 2017



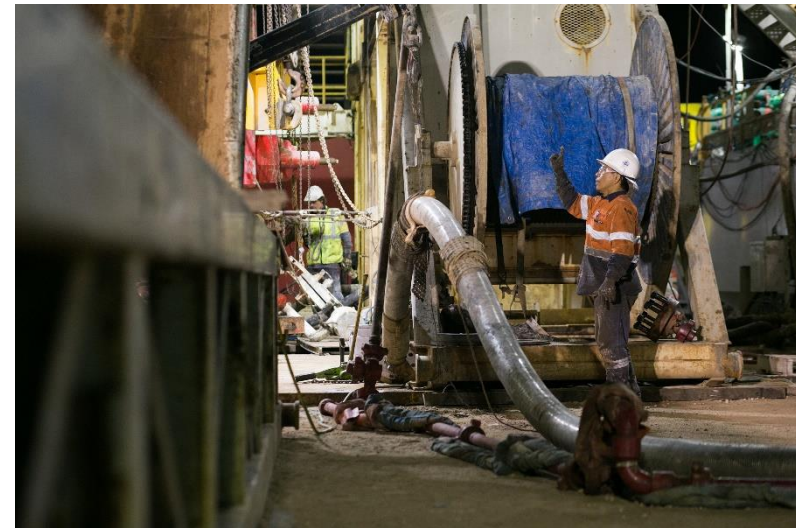
Xanadu Prospect

- The **Xanadu Prospect** is within TP/15, located in the northern Perth Basin approximately 250 km north of Perth.
- The permit occupies the 3 nautical mile wide state territorial waters of Western Australia adjacent to the township of Port Denison, and covers an area of 645.8 km².
- Xanadu is a **conventional oil play**, located near the southern end of the permit.



Xanadu Prospect

- Drilling of Xanadu-1 was completed in September 2017, ahead of schedule and under budget
- Xanadu subsequently declared an oil discovery
- Ongoing analysis of results underway
- Forward plan currently being developed to better understand the 'size of the prize'
- An exciting opportunity for the Company, JV partners, stakeholders and the local business community



EP368

Lockyer Deep Prospect

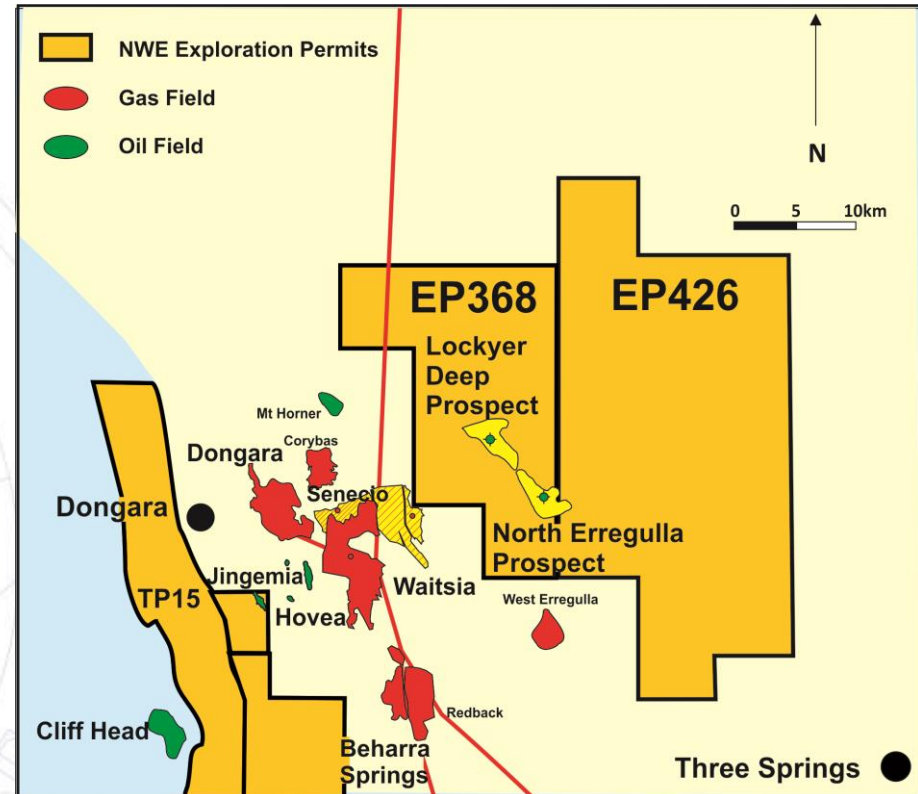
Joint Venture

Empire O&G Operator
Norwest Energy

80%
20%



- Major gas prospect located 15 km from AWE's Waitsia discovery – targeting same formations
- Two drillable prospects – Lockyer Deep and North Erregulla
- Already proven oil bearing from historic wells North Erregulla-1 and Lockyer-1 at the Dongara Sandstone level, although the deeper Kingia/High Cliff play successful at Waitsia was not tested in either of these wells



EP413

Arrowsmith Project

Joint Venture

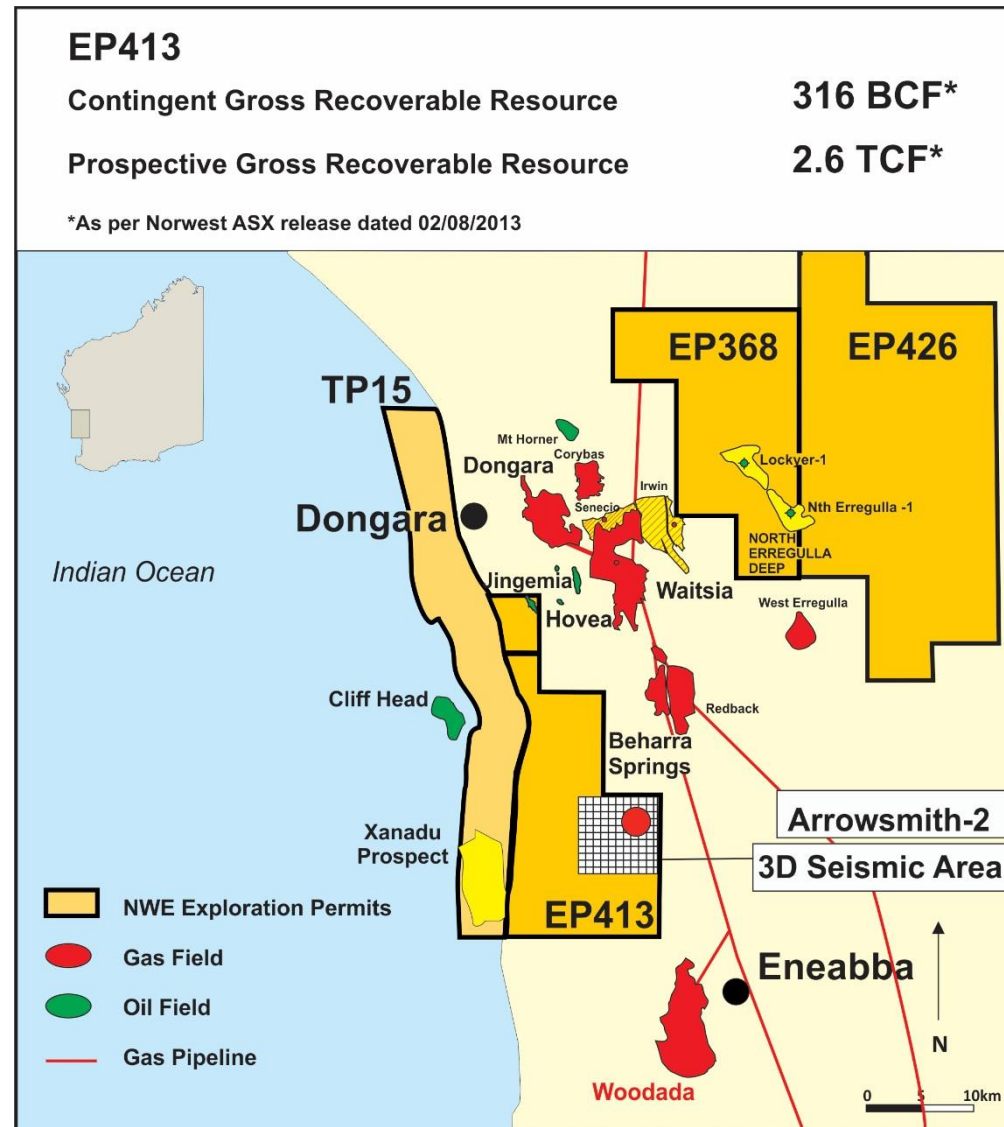
Norwest Energy Operator	27.945%
AWE Limited	44.252%
Bharat PetroResources (Indian Government)	27.803%



EP413 ARROWSMITH PROJECT



- Located approximately 300km north of Perth
- Arrowsmith-2 well drilled in mid-2011 resulted in the Arrowsmith Field being declared a discovery
- 3D seismic acquisition carried out in 2015 with results greatly improving structural definition
- Ongoing work program to improve understanding of this asset



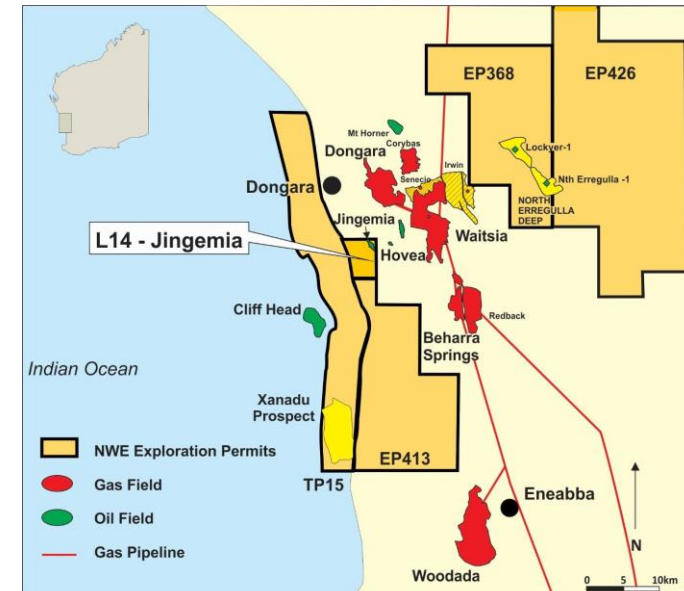
L14

Jingemia Oil Field



JINGEMIA OIL FIELD

- The Jingemia Oil Field is estimated to have initially contained 12 million barrels of oil in place with approximately 4.6 million barrels produced to date
- Plans currently in place for the Jingemia Oil Field to recommence production Q4 2017
- Additional exploration potential has been identified within L14 providing further opportunity to extend field life if proven successful

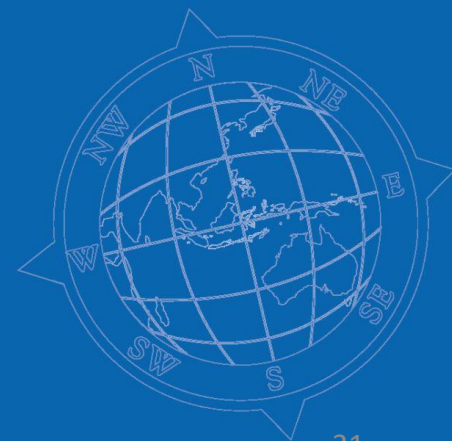


In Summary

- Norwest Energy maintains a strong commitment to the Mid West and northern Perth Basin
- A dedicated and experienced Board and management team focused on Best Practice operations
- Health, Safety and the Environment remain a key priority of the business
- Involving local community, people and businesses wherever possible



Xanadu-1 Drilling Location, 11 September 2017



THANK YOU



Xanadu-1 Drilling Location, 11 September 2017