



GOLD DISCOVERY
Australia & Cote d'Ivoire



Capital Structure and Board

ASX – AOP	Securities	Market Cap	Cash*	Enterprise Value
Stock Price \$ 0.26	(million)	(million)	(million)	(million)
Total	177.6	\$46.3	\$9.4	\$36.9

* balance Sept 30 2017

Unlisted Options	12.2	Exercise price 13.5c	expiry June 30 2019
Management Options	10	Exercise price 5c	expiry Dec 31 2018

Board & Management		15%
Major Shareholders		
	Mr Yi Weng	19%
	Mr Geoff Harris	12%
	1832 Asset Management	6%
	Capricorn Group	6%

Roger Steinepreis *Chairman*. Lawyer and Chairman of Perth based firm, Steinepreis Paganin

Nick Castleden *Managing Director*. Geologist >20 years experience in mineral exploration and development with Mt Isa Mines, Perilya Mines, MPI Mines, LionOre, Breakaway Resources, Verona Capital

Robert Gherghetta *Non-executive Director*. CA with over 20 years experience in natural resources, public practice and investment banking

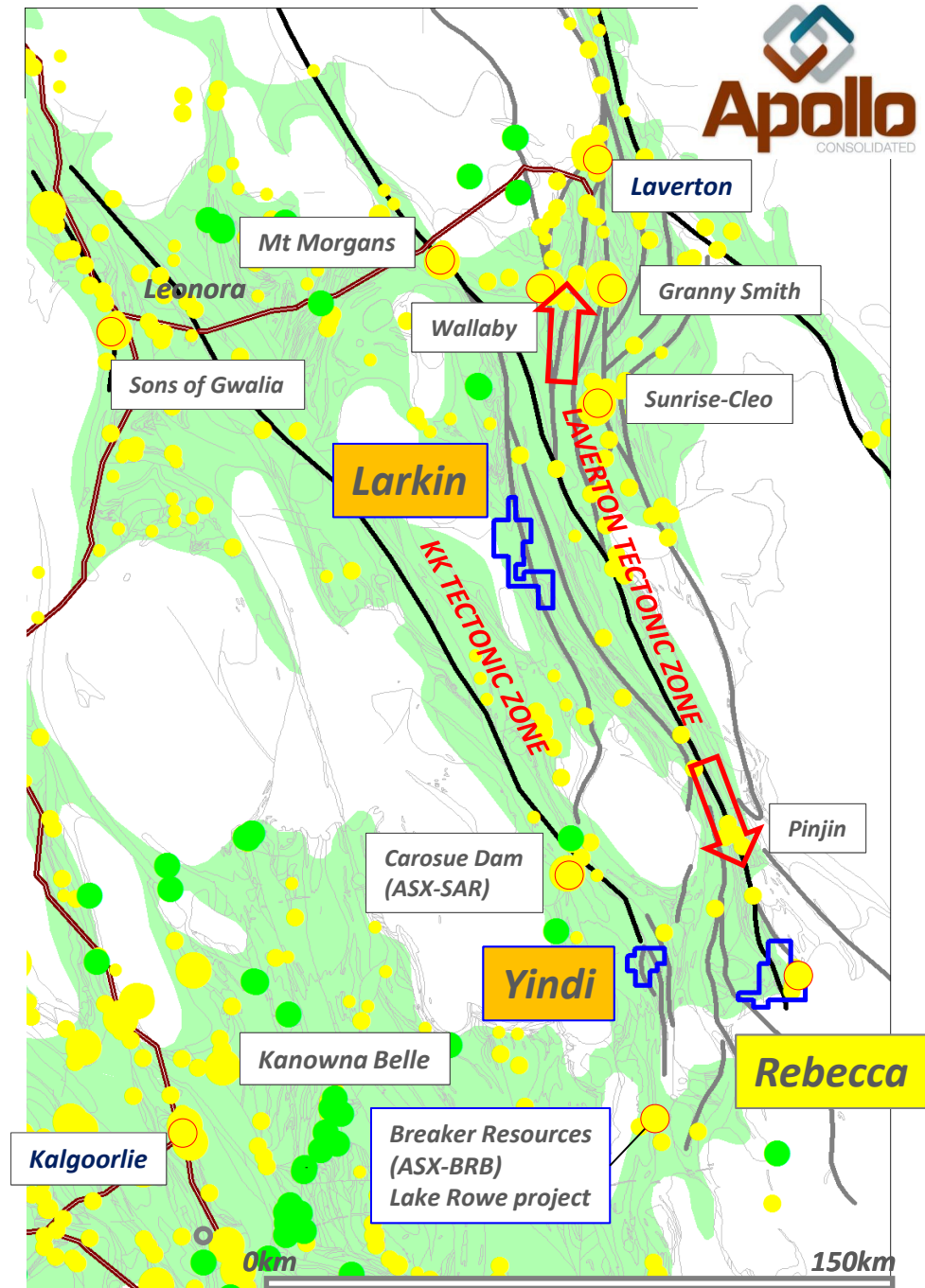
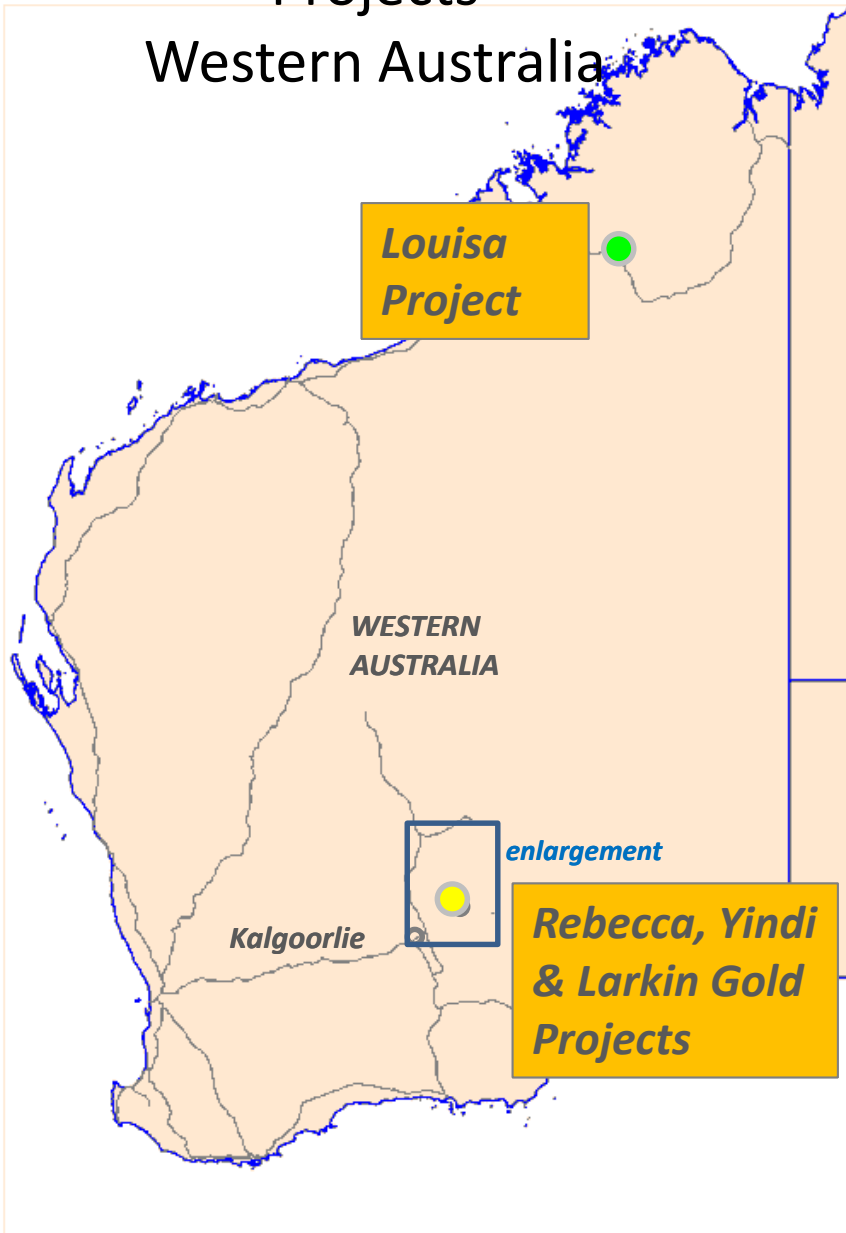
Stephen West *Non-Executive Director*. CA with over 20 years of financial and corporate experience gained in public practice, oil and gas, mining and investment banking spanning Australia, United Kingdom, Europe, CIS and Africa

George Ventouras *Non-executive Director*. Over 20 years experience in Marketing and Corporate fields



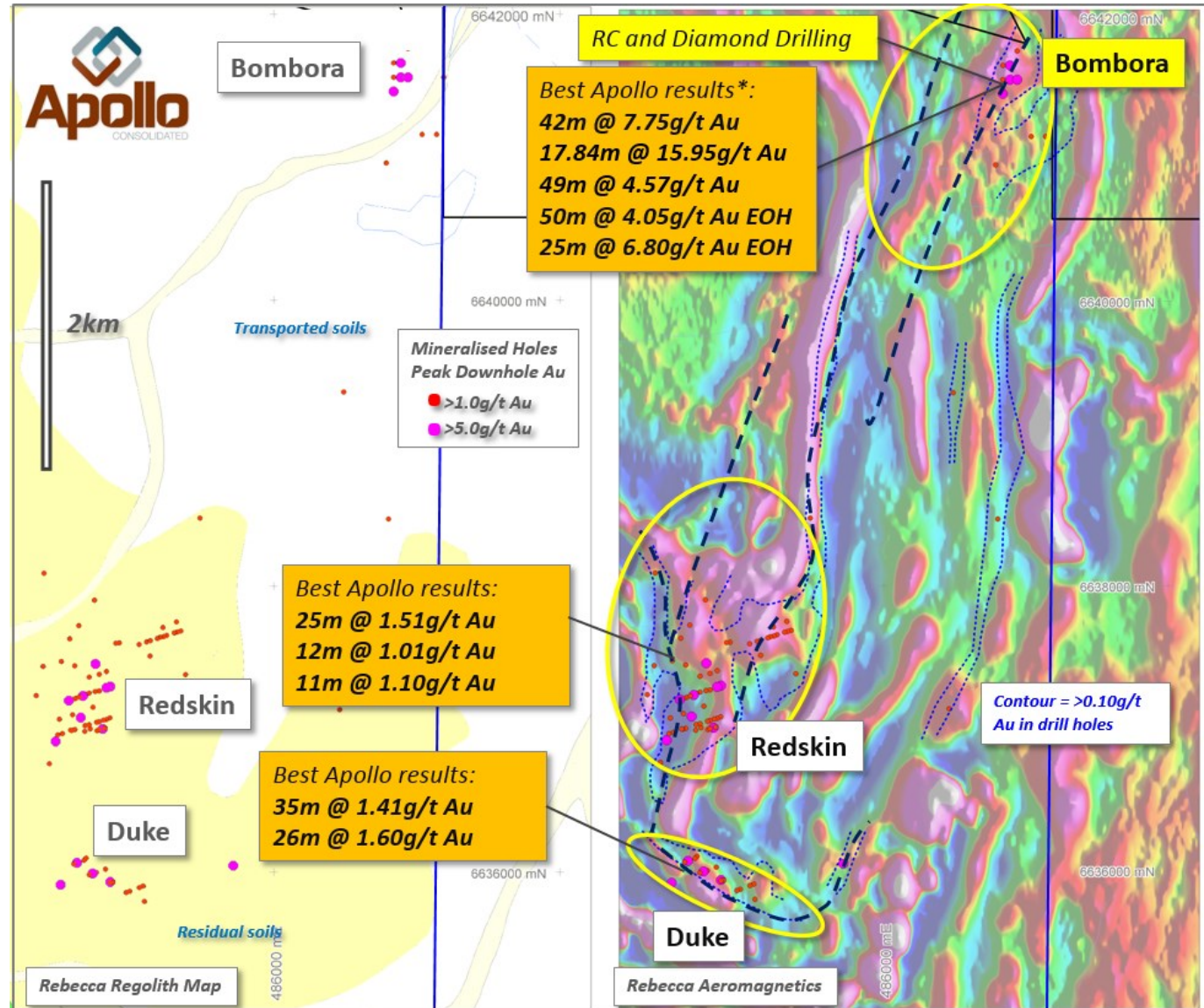
Gold and Nickel Exploration Projects

Western Australia



Rebecca Project & Bombora Discovery

- Gneiss terrain 60km SE Carosue Dam (ASX-SAR)
- Southern end prolific Laverton Tectonic Zone
- Disseminated sulphide lodes
- Widespread gold anomalism
- Three active prospects
- Excellent strike, IP & EM targets



*intercept 24th Oct 2017 in yellow. For past drilling details, please refer to ASX-AOP announcements 26th August 2012, 28th September 2012, 8th October 2015, 1st September 2016, 9th 13th 20th and 24th October 2017.

Bombora Aug 2017 First diamond program



Bombora

Plan View Magnetic Image

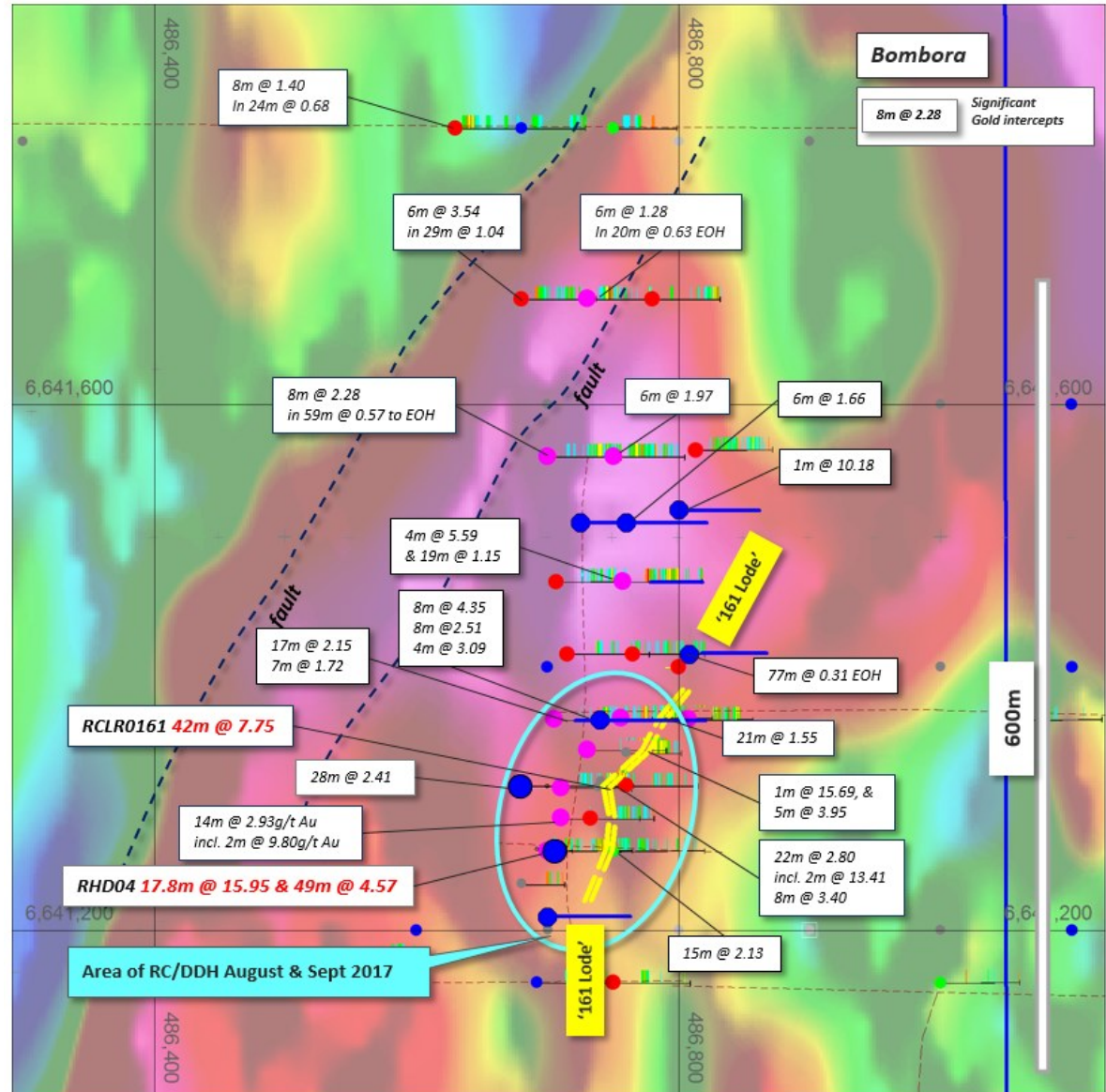
- >600m, open & under-explored
- Hidden by 30-40m oxide profile
- Strong sulphide/Au relationship
- High Grade '161 Lode':

161 Lode RC INTERCEPTS:

- **42m @ 7.75g/t Au incl. 2m @ 22.39g/t & 3m @ 65.21g/t Au**
- **50m @ 4.05g/t Au EOH**
- **25m @ 6.80g/t Au EOH**

161 Lode DIAMOND INTERCEPTS:

- **17.84 @ 15.95g/t Au incl. 1m @ 231.27g/t, 1m 15.20g/t, & 1m @ 11.42g/t Au**
- **49m @ 4.57g/t Au incl. 1.06m @ 16.83g/t, 2m @ 14.41g/t & 4m @ 17.55g/t Au**

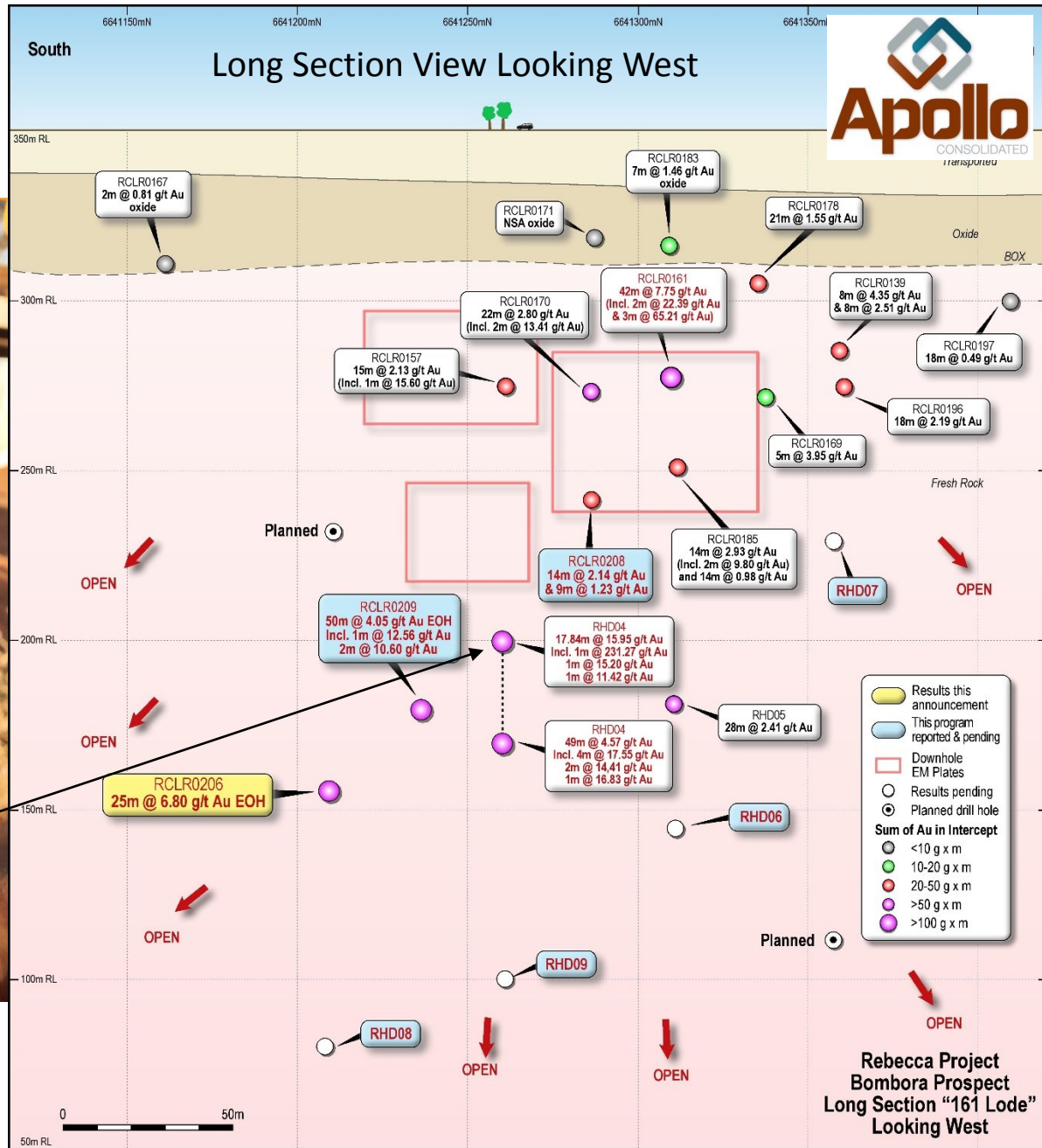


*for past drilling details, please refer to ASX-AOP announcements 26th August 2012, 28th September 2012, 8th October 2015, 1st September 2016, 9th 13th 20th and 24th October 2017.

161 Lode Emerges

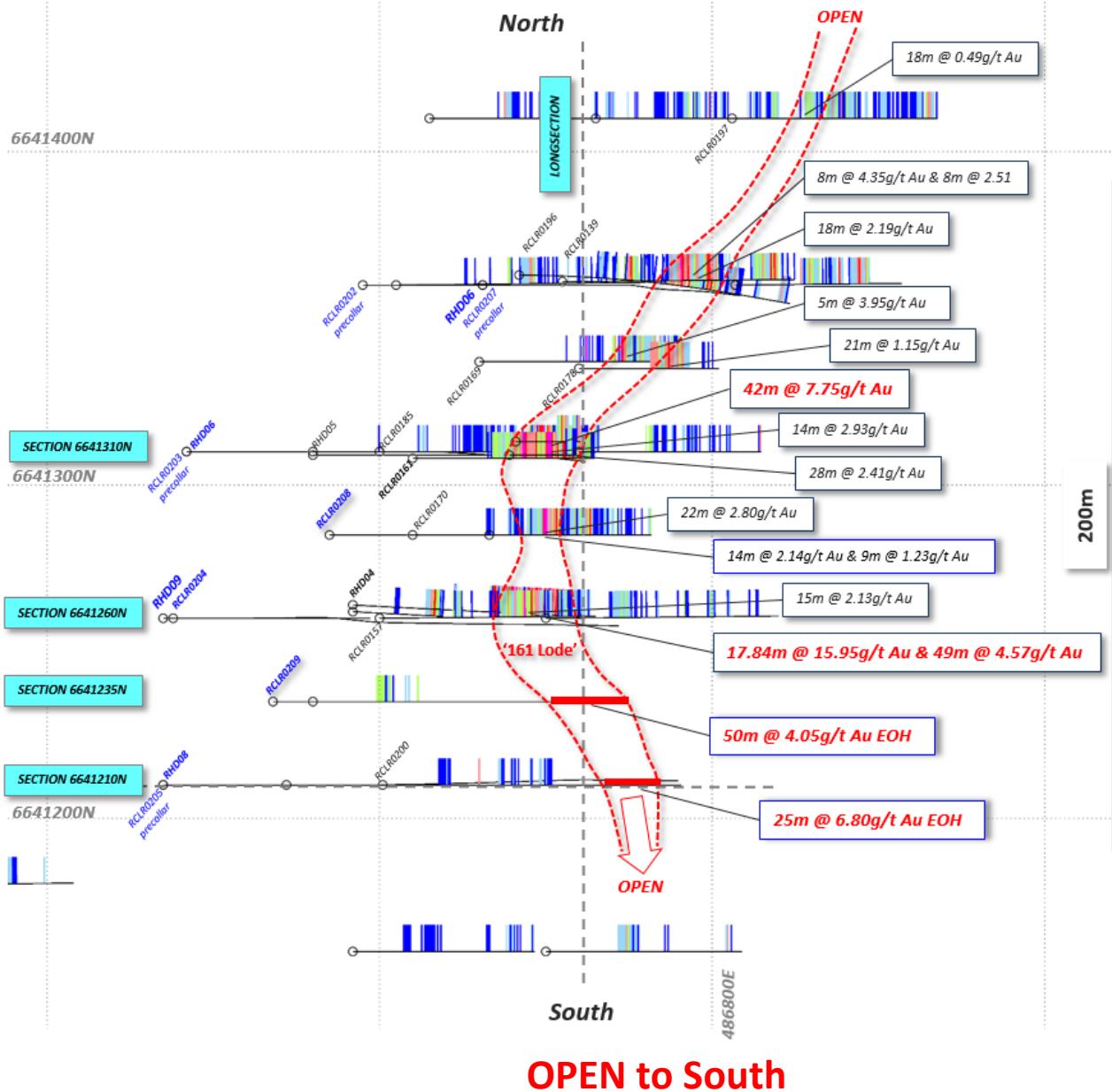


Pyrrhotite & pyrite in altered gneiss:
RDH04 153-157m **15.20g/t**



*intercept 24th Oct 2017 in yellow. For past drilling details, please refer to ASX-AOP announcements 26th August 2012, 28th September 2012, 8th October 2015, 1st September 2016, 9th 13th 20th and 24th October 2017.

161 Lode – geometry and upside

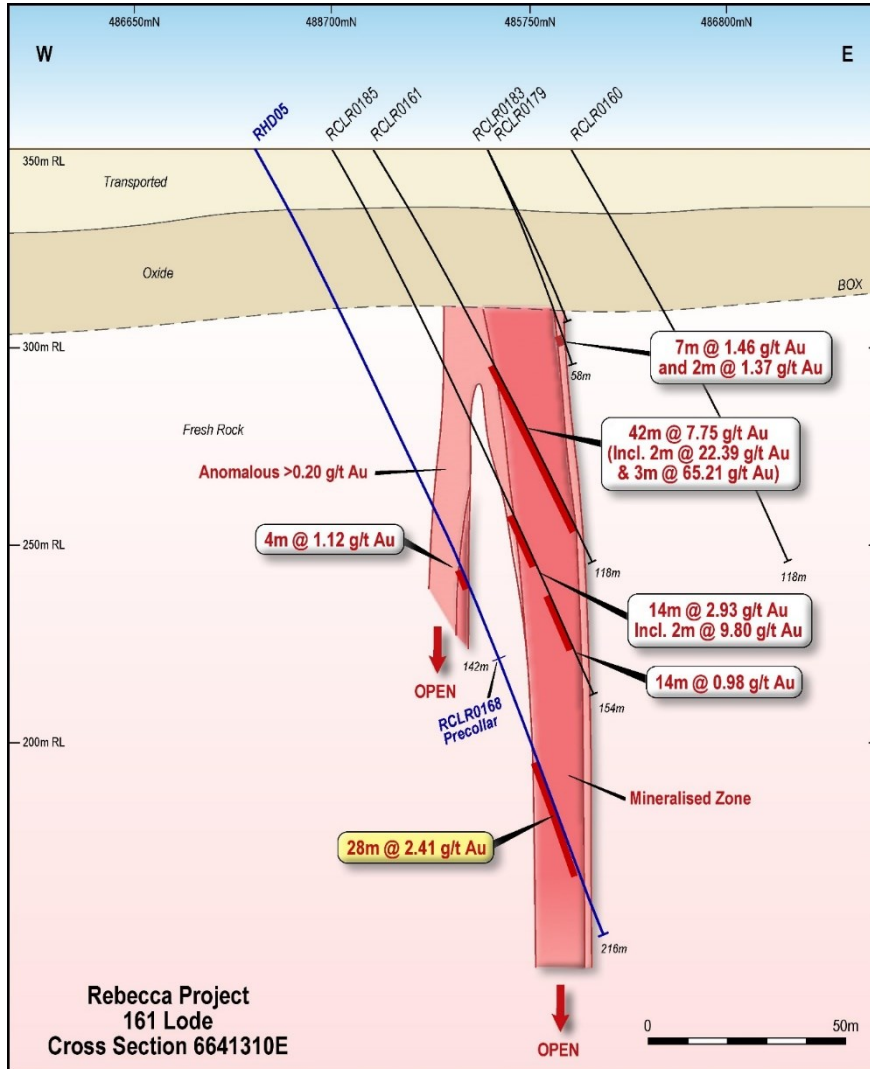


HOLE ID	Sample No	From	To	Type	Au g/t
RCLR0209	283389	160	161	Dry split RC chips	0.12
RCLR0209	283390	161	162	Dry split RC chips	0.10
RCLR0209	283391	162	163	Dry split RC chips	0.09
RCLR0209	283392	163	164	Dry split RC chips	0.21
RCLR0209	283393	164	165	Dry split RC chips	0.04
RCLR0209	283394	165	166	Dry split RC chips	0.38
RCLR0209	283395	166	167	Dry split RC chips	0.06
RCLR0209	283396	167	168	Dry split RC chips	0.29
RCLR0209	283397	168	169	Dry split RC chips	0.26
RCLR0209	283398	169	170	Dry split RC chips	3.87
RCLR0209	283399	170	171	Dry split RC chips	7.17
RCLR0209	283400	171	172	Dry split RC chips	3.95
RCLR0209	283401	172	173	Dry split RC chips	2.36
RCLR0209	283402	173	174	Dry split RC chips	6.85
RCLR0209	283403	174	175	Dry split RC chips	4.90
RCLR0209	283404	175	176	Dry split RC chips	2.78
RCLR0209	283405	176	177	Dry split RC chips	3.42
RCLR0209	283406	177	178	Dry split RC chips	12.56
RCLR0209	283407	178	179	Dry split RC chips	5.95
RCLR0209	283409	179	180	Dry split RC chips	3.68
RCLR0209	283410	180	181	Dry split RC chips	6.93
RCLR0209	283411	181	182	Dry split RC chips	2.55
RCLR0209	283412	182	183	Dry split RC chips	2.81
RCLR0209	283413	183	184	Dry split RC chips	6.24
RCLR0209	283414	184	185	Dry split RC chips	1.29
RCLR0209	283415	185	186	Dry split RC chips	3.24
RCLR0209	283416	186	187	Dry split RC chips	1.14
RCLR0209	283417	187	188	Dry split RC chips	1.29
RCLR0209	283418	188	189	Dry split RC chips	4.82
RCLR0209	283419	189	190	Dry split RC chips	7.66
RCLR0209	283420	190	191	Dry split RC chips	11.14
RCLR0209	283421	191	192	Dry split RC chips	10.06
RCLR0209	283422	192	193	Dry split RC chips	2.22
RCLR0209	283423	193	194	Dry split RC chips	2.76
RCLR0209	283424	194	195	Dry split RC chips	2.77
RCLR0209	283425	195	196	Dry split RC chips	1.05
RCLR0209	283426	196	197	Dry split RC chips	2.11
RCLR0209	283427	197	198	Dry split RC chips	2.92
RCLR0209	283428	198	199	Dry split RC chips	2.77
RCLR0209	283429	199	200	Dry split RC chips	0.62
RCLR0209	283430	200	201	Dry split RC chips	6.31
RCLR0209	283432	201	202	Dry split RC chips	1.85
RCLR0209	283433	202	203	Dry split RC chips	2.29
RCLR0209	283434	203	204	Dry split RC chips	6.83
RCLR0209	283435	204	205	Dry split RC chips	0.99
RCLR0209	283436	205	206	Dry split RC chips	1.60
RCLR0209	283437	206	207	Dry split RC chips	2.08
RCLR0209	283438	207	208	Dry split RC chips	2.10
RCLR0209	283439	208	209	Dry split RC chips	2.06
RCLR0209	283440	209	210	Dry split RC chips	0.83
RCLR0209	283441	210	211	Dry split RC chips	1.63
RCLR0209	283442	211	212	Dry split RC chips	6.73
RCLR0209	283443	212	213	Dry split RC chips	2.04
RCLR0209	283444	213	214	Dry split RC chips	0.90
RCLR0209	283445	214	215	Dry split RC chips	4.83
RCLR0209	283446	215	216	Dry split RC chips	6.29
RCLR0209	283447	216	217	Dry split RC chips	7.79
RCLR0209	283448	217	218	Dry split RC chips	6.15
RCLR0209	283449	218	219	Dry split RC chips	5.30
RCLR0209	283450	219	220 EOH	Dry split RC chips	

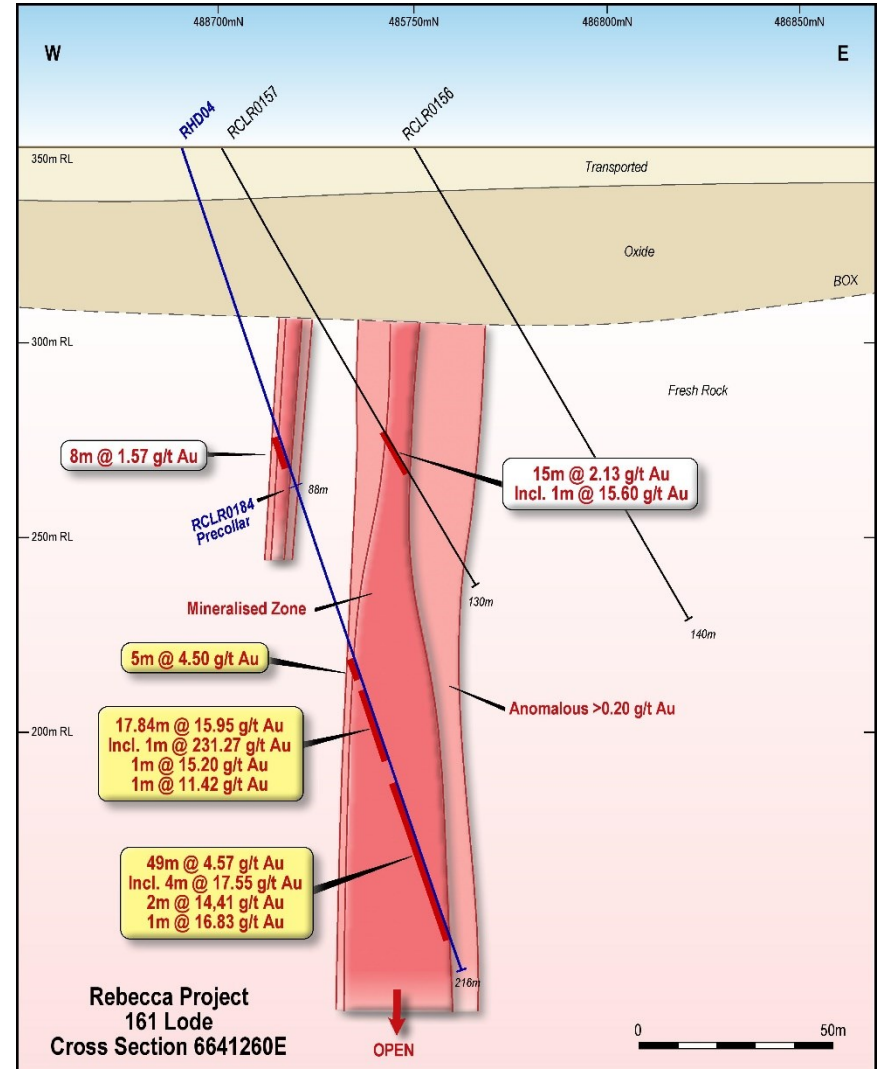
End of Hole

161 Lode cont.

Cross Section 1310N Looking North



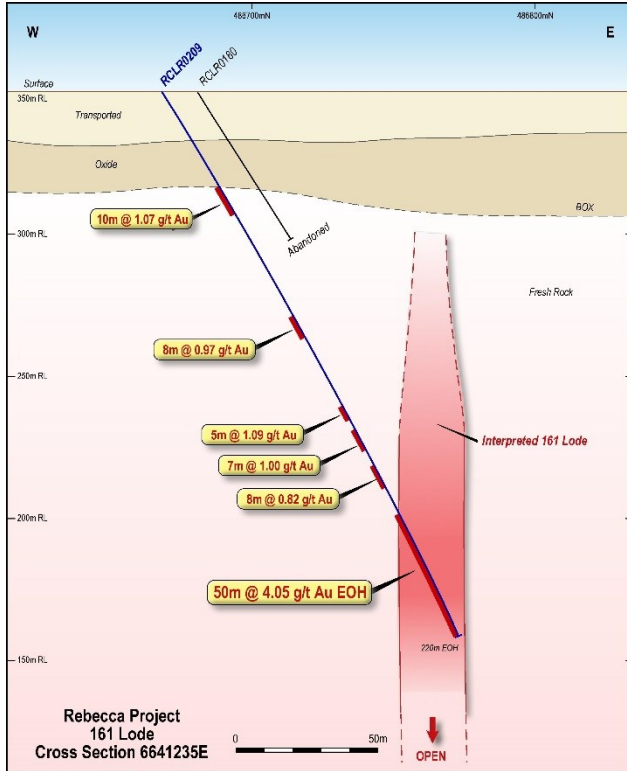
Cross Section 1260N Looking North



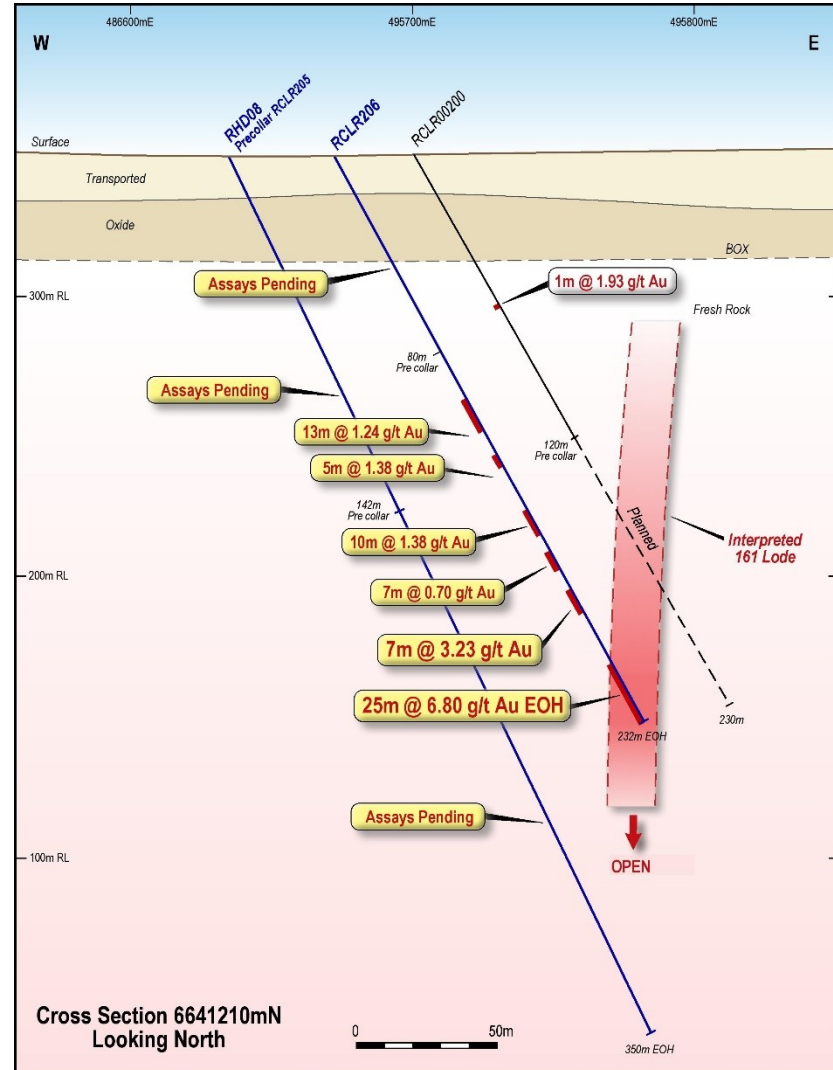
*intercepts Aug 2017 in yellow. For past drilling details, please refer to ASX-AOP announcements 26th August 2012, 28th September 2012, 8th October 2015, and 1st September 2016.

161 Lode cont.

Cross Section 1235N Looking North



Cross Section 1210N Looking North



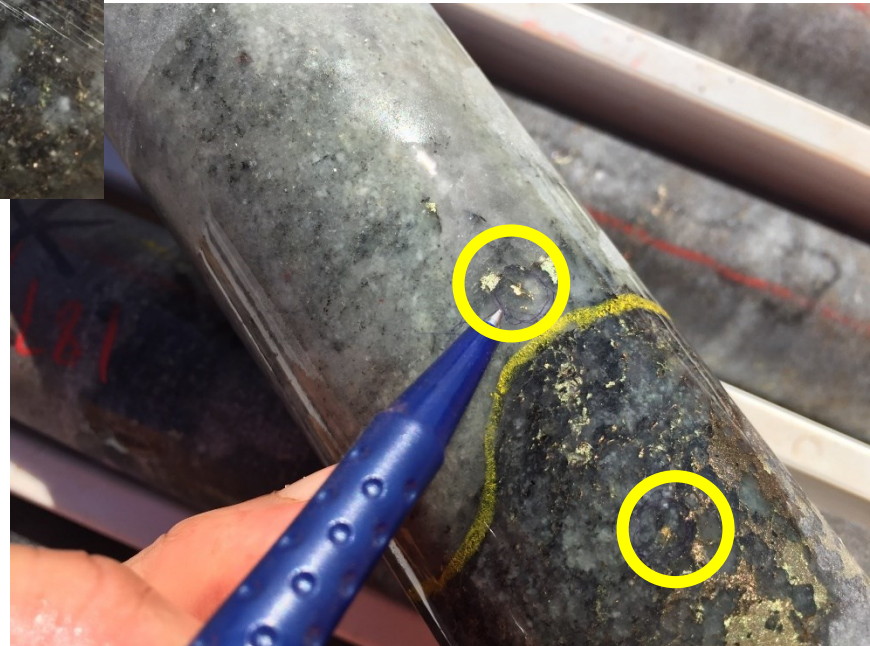
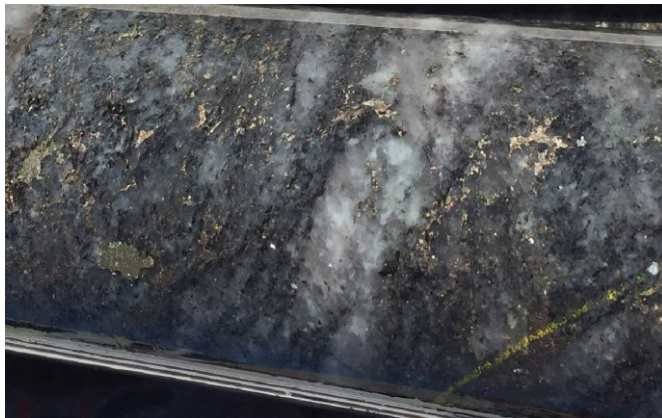
*intercepts Aug 2017 in yellow. For past drilling details, please refer to ASX-AOP announcements 26th August 2012, 28th September 2012, 8th October 2015, and 1st September 2016.

161 Lode – what is it?



- Vertical gold zone in altered felsic gneiss, north to NNE trend, up to 25m wide
- Au related to cloud disseminated sulphide
- Gneissic fabric is moderate to west
- Exceptional grades & free Au in places – control & orientation HG is unknown

Typical altered gneiss **RDH05** 199-200m **2.79 g/t**

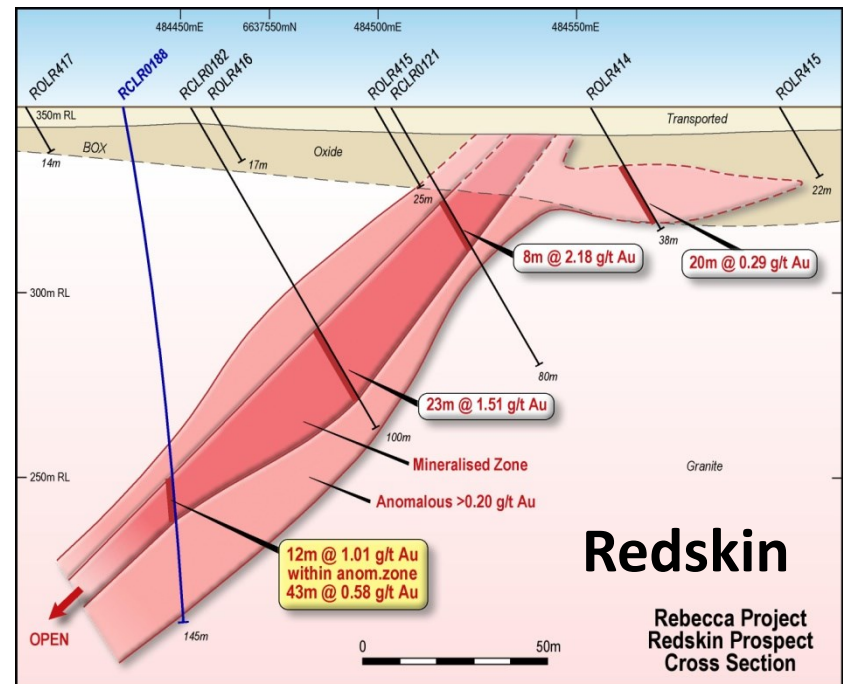
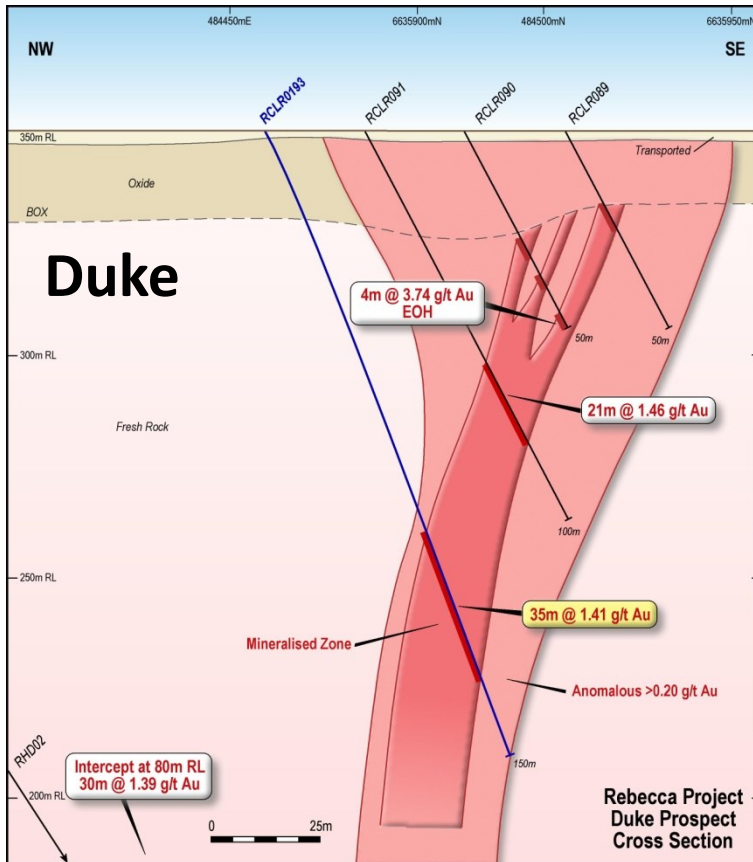


Visible Au **RDH04** 187-188m **26.32 g/t**

The Other Prospects

REDSKIN August 2016 Drilling

- Strong disseminated sulphide zones, IP & DHEM responses
- 12m @ 1.01g/t Au***
- 10m @ 1.10g/t Au**
- New zones emerging >1km



DUKE August 2016 RC Drilling

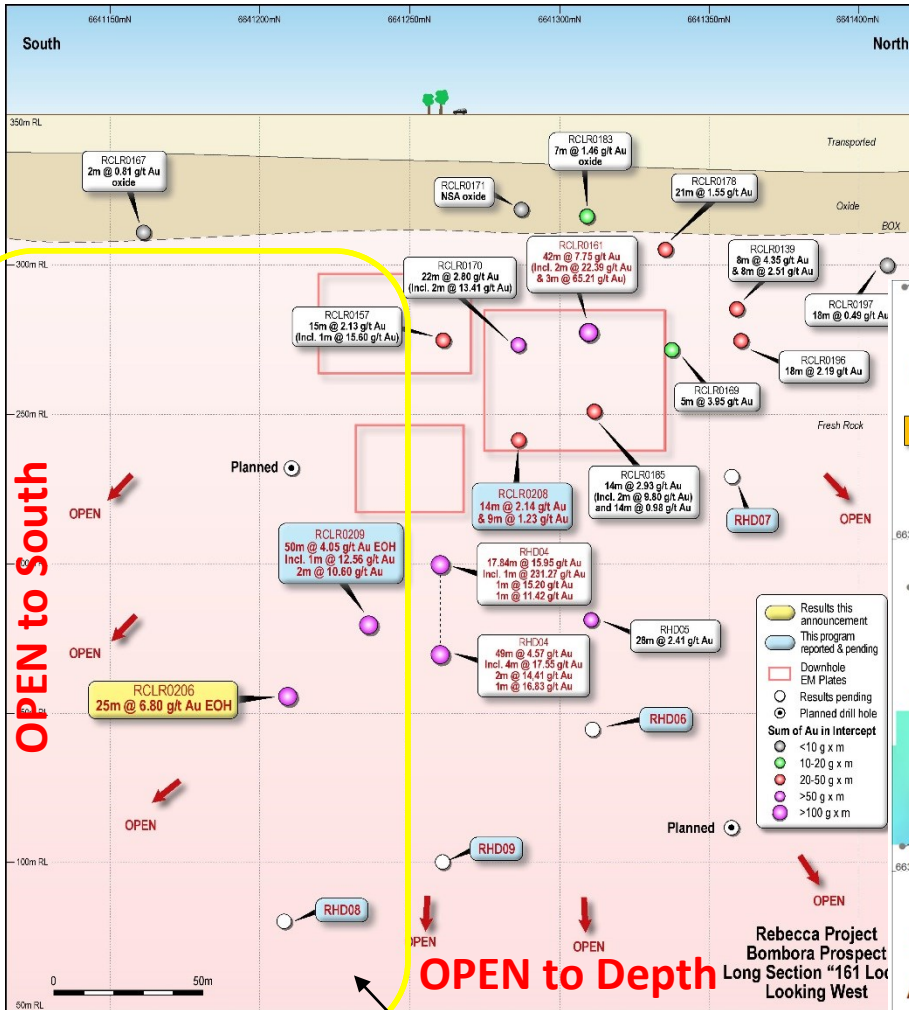
- 35m @ 1.41g/t Au, 26m @ 1.60g/t Au***
- Good continuity wide zone >300m long
- Open to depth & east

* For RC intercept details refer ASX Announcement dated 1 September 2016 "RC Drilling Returns Wide Gold Intercepts at Rebecca Project, Western Australia"

What's Next?

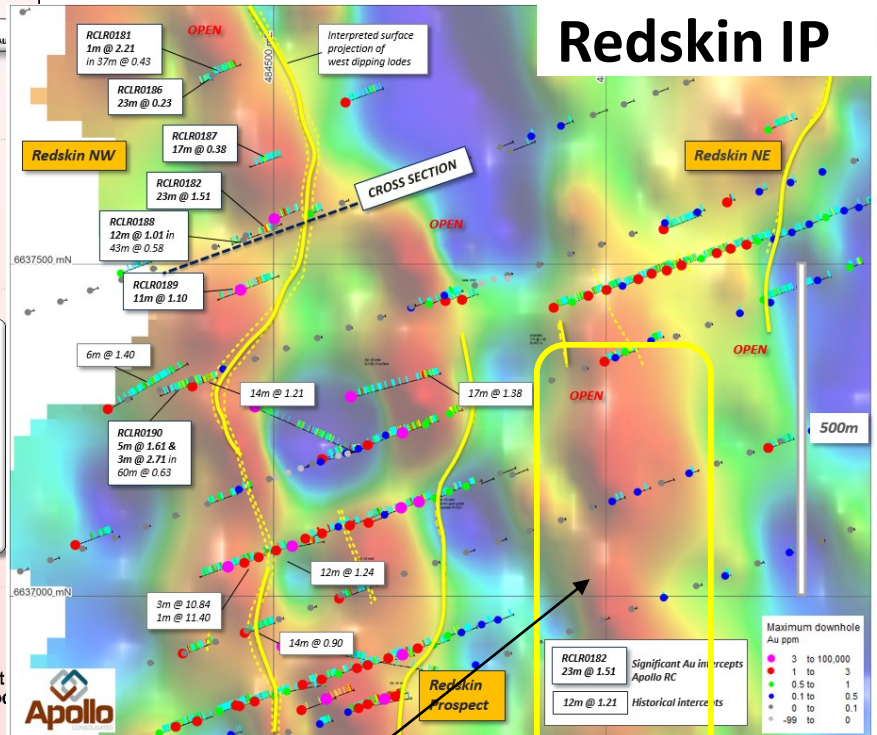
161 Lode

161 Lode November



RC/DDH Nov 2017

- RC/DDH following high-grade shoot
- Targeting new lodges at Bombora
- Work-up IP/EM targets Redskin, Duke, & strike targets

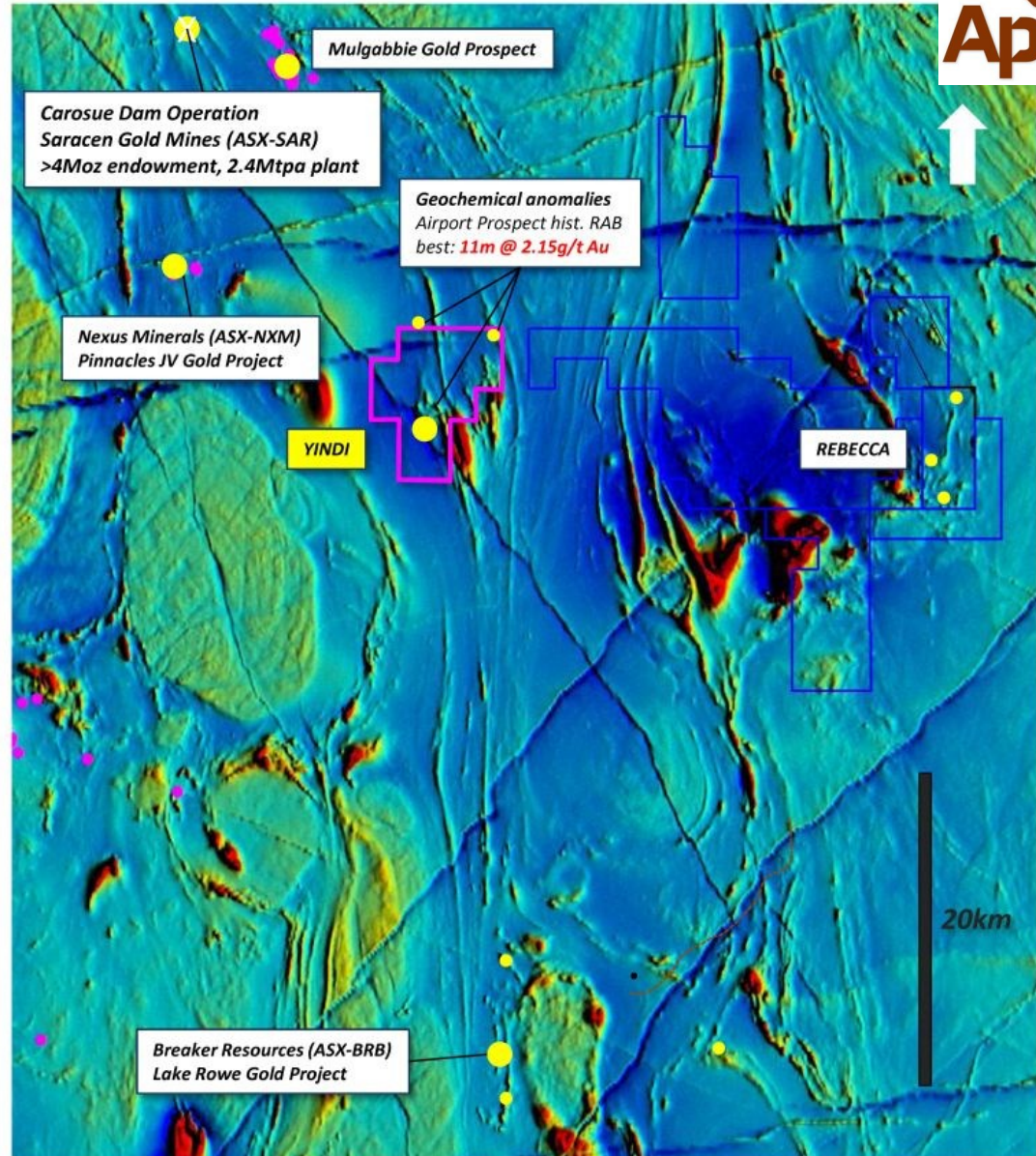


500m untested IP anomaly RC ready

Yindi Project

Address in high-profile belt:

- **Soil-covered structural targets**
- Located **between** Carosue Dam gold mine (Saracen Minerals) and Lake Rowe discovery (Breaker Ressources)
- Gold anomalism in soils and RAB drilling
- Best historic RC drilling result: **11m @ 2.15g/t Au*** in felsic intrusive
- Strike extensions under-drilled in covered terrain
- **First-pass aircore planned for late 2017**



* For details on historical drilling at the Airport prospect refer to GSWA Open File Report A46430 "Yindi Yardarino Project NE Goldfields, Western Australia" dated November 1995.

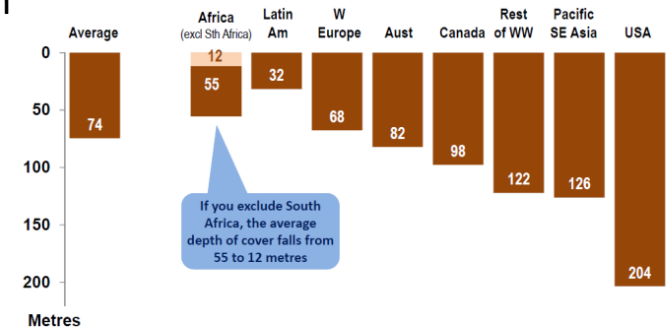
Cote d'Ivoire



Cote d'Ivoire – A new frontier in proven province...

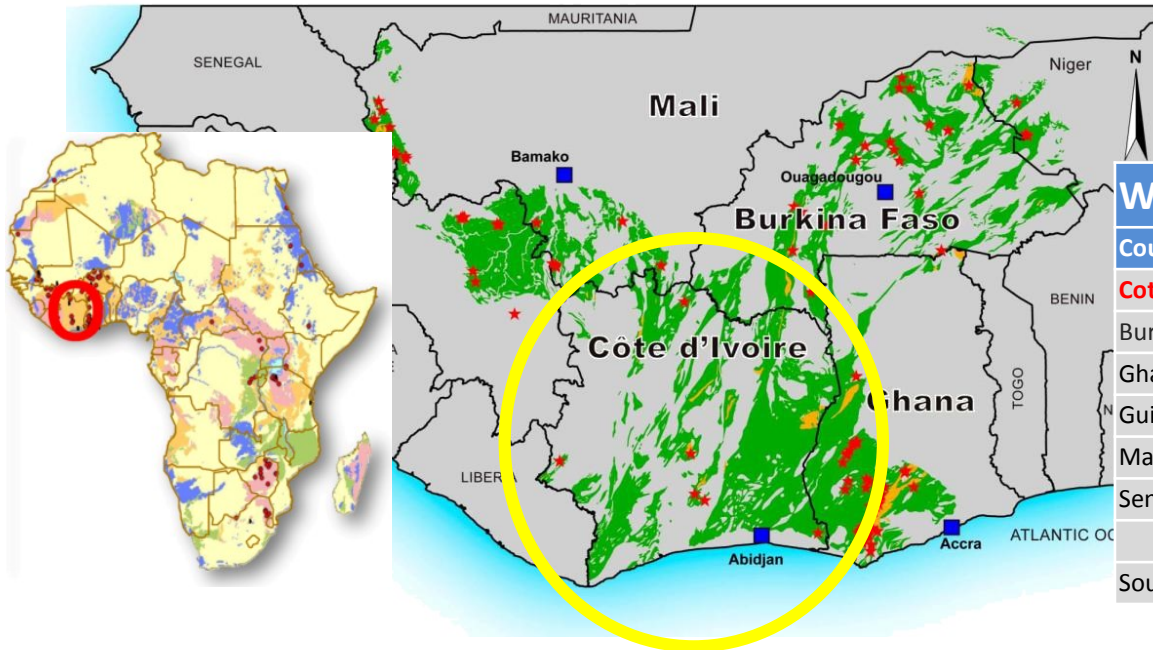
- Over 178moz gold discovered in West African Shield
- Shallow, fast-emerging resources. **Lowest discovery costs**
- Cote d'Ivoire has largest endowment of host rocks in region
- **Cote d'Ivoire is least explored – discoveries to come**
- Good infrastructure, stable political and economic environment : >8% annual GDP growth since 2012
- revitalised mining code & permitting

Average depth of cover for discoveries - all metals
Western World: 2003-2012



Note: Based on deposits >0.1 Moz Au, >5 Mt U₃O₈, >10 Mt Ni, >0.1 Mt Cu-equip
Excludes bulk mineral discoveries

Source: MinEx Consulting @ July 2013

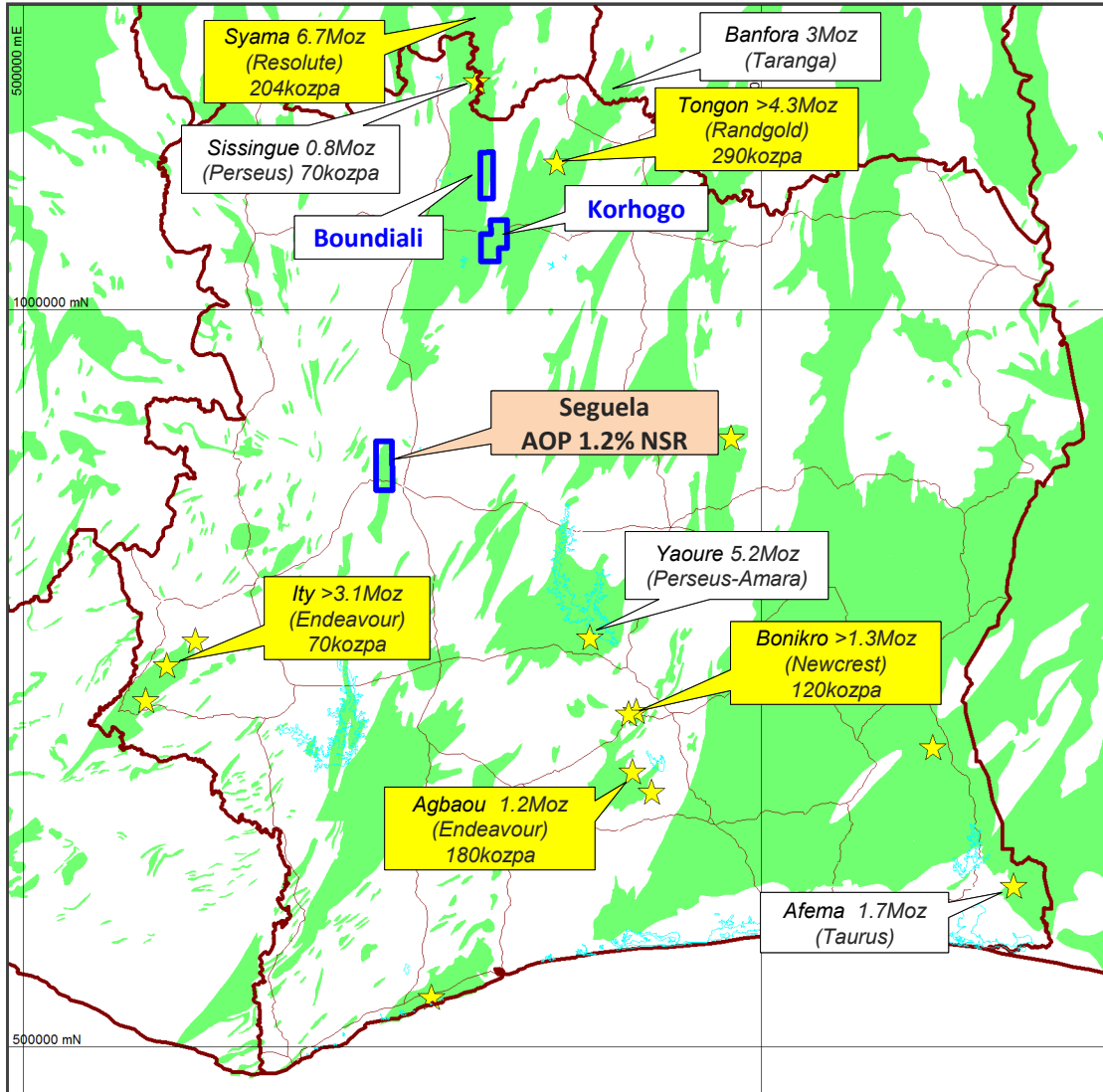


West African Gold Deposits by Country

Country	% Birimian	Gold Discovered	% of Gold
Cote d'Ivoire	35%	8 Moz	4%
Burkina Faso	22%	12 Moz	7%
Ghana	19%	110 Moz	62%
Guinea	11%	12 Moz	7%
Mali	10%	33 Moz	19%
Senegal	3%	3 Moz	2%
Total	100%	178 Moz	100%

Source: USGS Minerals Commodities 2009

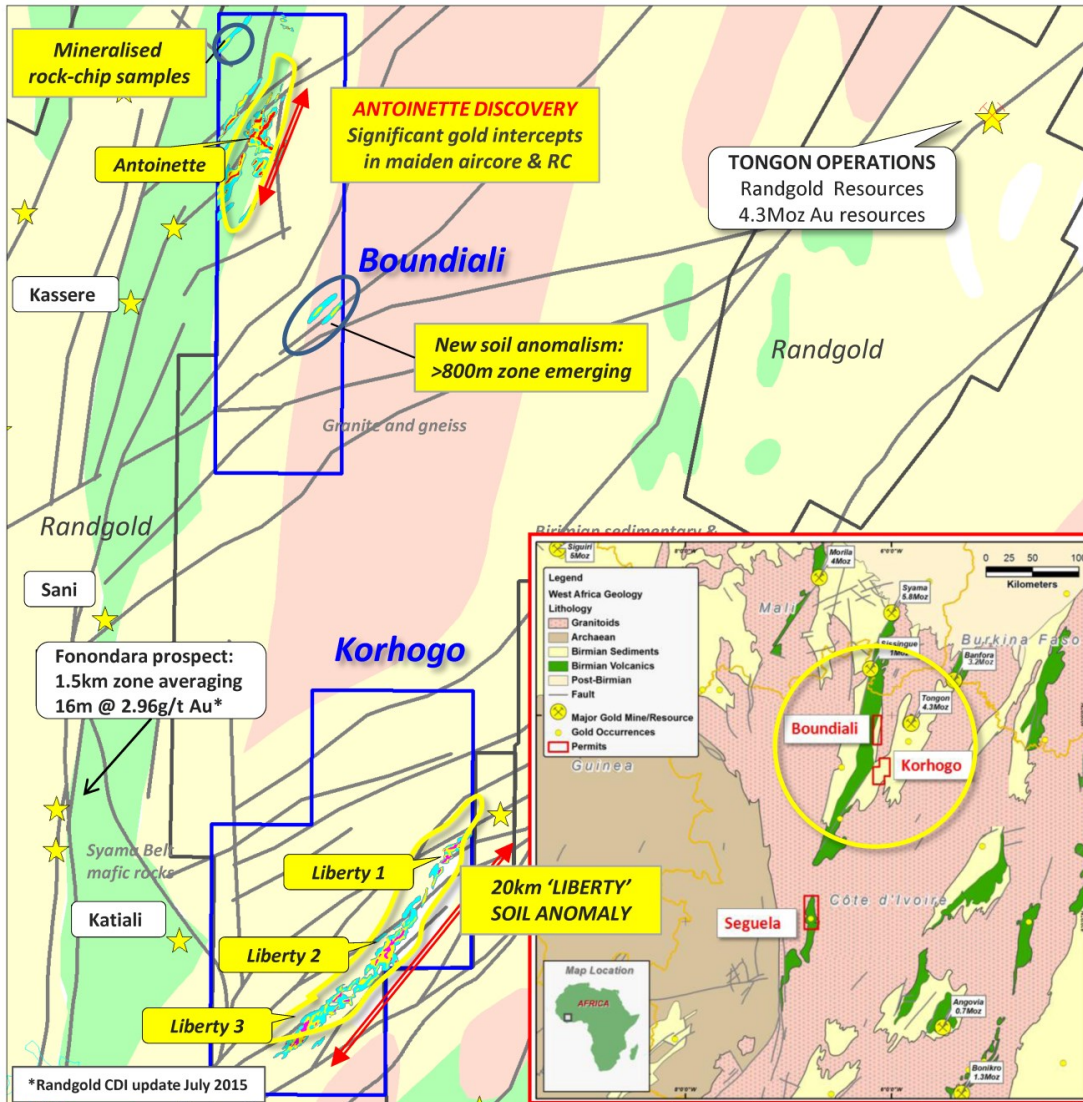
Footprint into Exceptional Gold Belt...



- >600km² landholding in proven mineralised terrains
- New targets emerging each program
- **Gold discovery in 1st round drilling at 100% owned Boundiali project**
- 100% owned **Korhogo** project on the 6Moz Banfora-Tongon structural trend, >20km gold anomaly to be evaluated
- Seguela (Newcrest) – Apollo 1.2% NSR



Focus on Northern Permits – live systems in prime area



- **100% owned** through local company Aspire Nord SA
- **Boundiali** permit on regional structure with major gold mineralisation along-trend
- **Excellent aircore results to 20m @ 2.71g/t Au¹**, RC results to **14m @ 11.24g/t²**
- **Korhogo permit** on 6Moz Banfora-Tongon structural trend
- **Strong soil anomalies**, ongoing work
- Active exploration region with new discoveries being made e.g. **Fonondara*** prospect to west

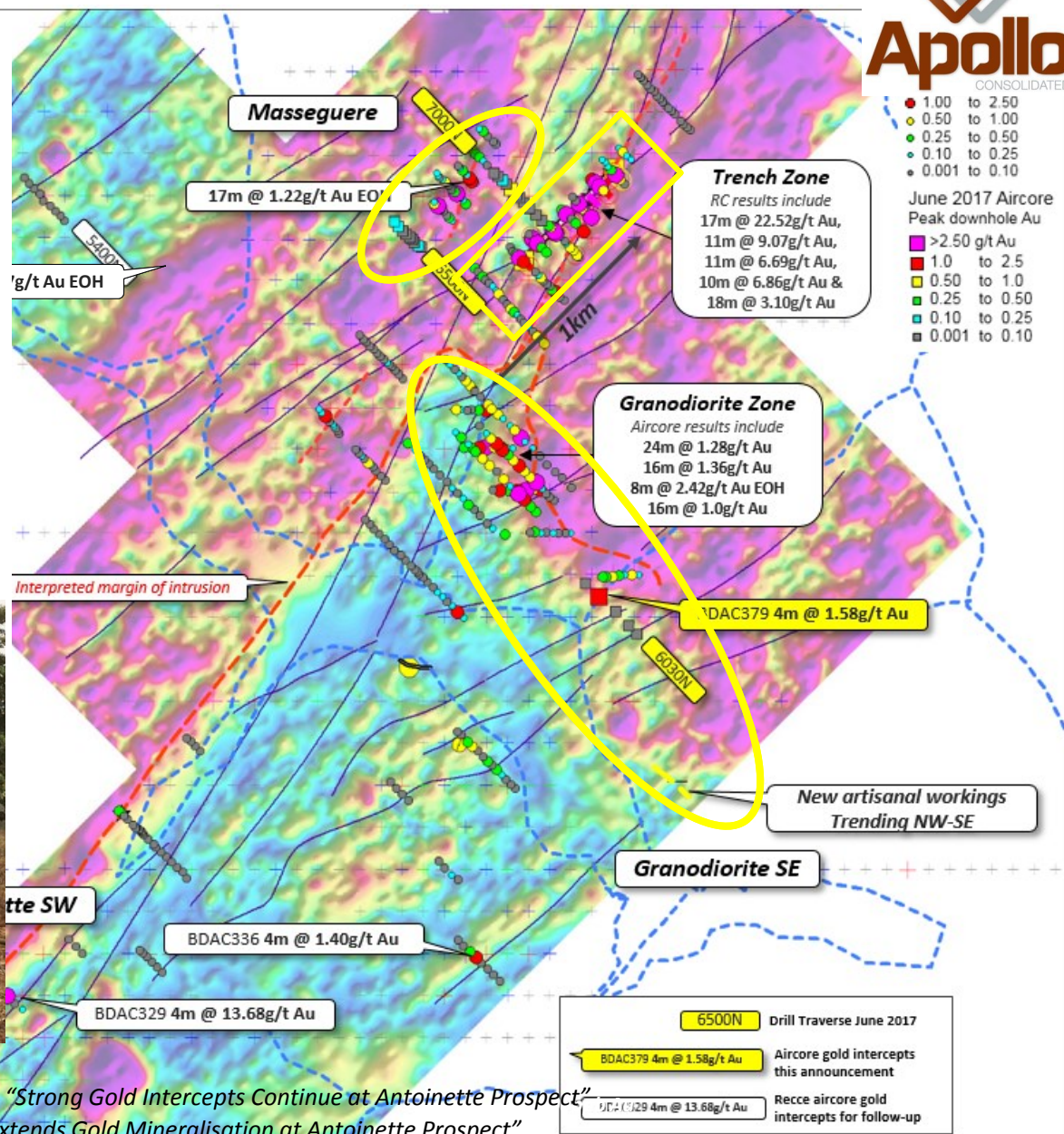
*Randgold March 2015 exploration update

1. ASX Announcement dated 8 February 2016 "Apollo Drills 20m @ 2.71g/t Au and 36m at 1.54g/t Au in First Holes at Antoinette Prospect"
2. ASX Announcement dated 13 July 2016 "Apollo hits 14m @ 11.24g/t in RC Drilling Antoinette Gold Prospect"

Since 2015– Significant **Discovery** TRENCH ZONE plus live targets



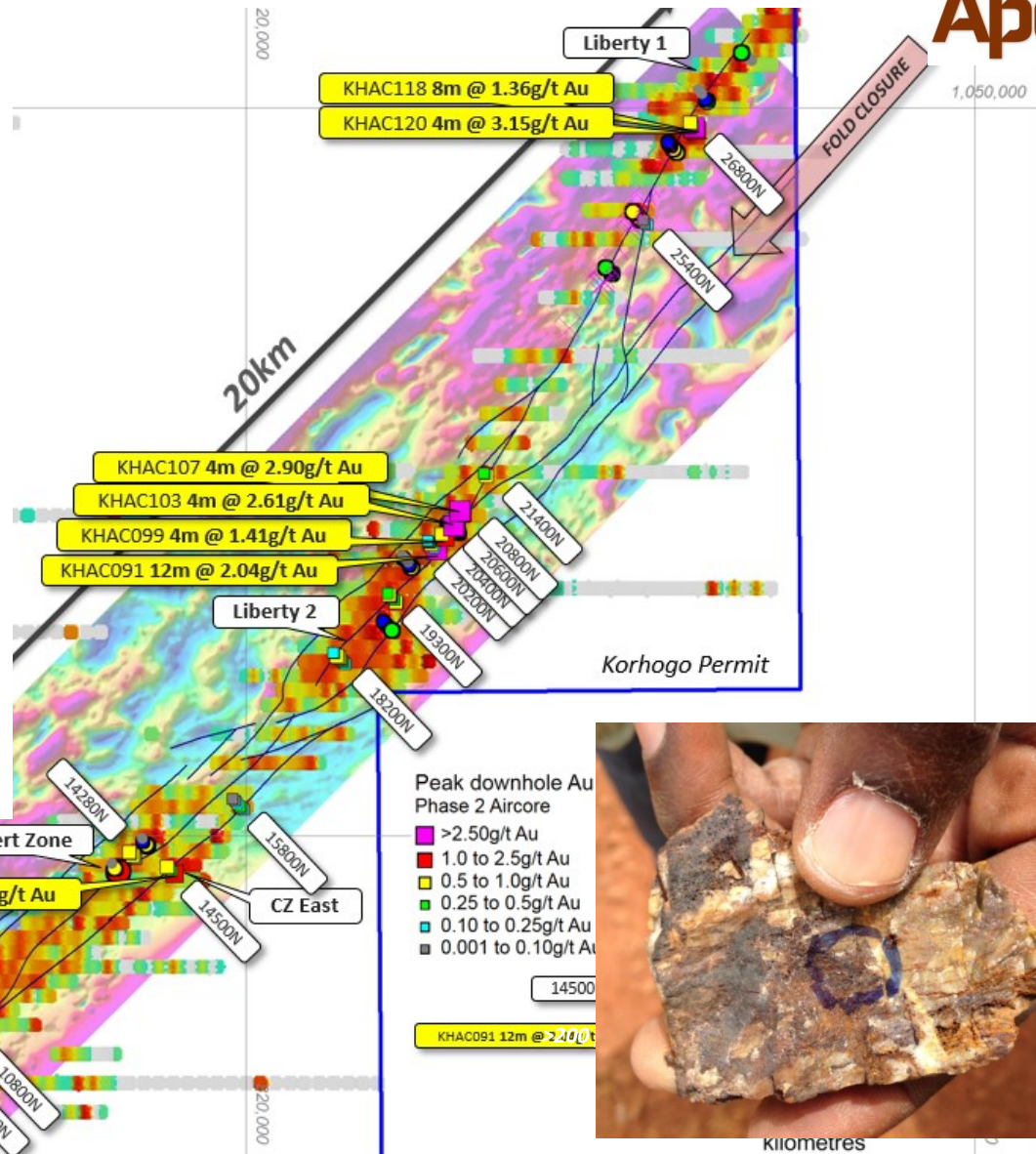
- Ten sections, 600m strike, 28 RC holes
- Multiple significant hits*
- **17m @ 22.52g/t Au**
- **11m @ 6.69g/t Au**
- **10m @ 6.86g/t Au**
- New eastern zone
- High-grade oxide profile



* Refer to ASX Announcement dated 11 April 2016 *“Strong Gold Intercepts Continue at Antoinette Prospect”*
 ASX Announcement dated 22 June 2016 *“Drilling Extends Gold Mineralisation at Antoinette Prospect”*
 ASX Announcement dated 16 Jan 2017 *“Aircore Drilling Reveals More Gold at Antoinette Prospect”*

Korhogo Permit – 20km gold anomaly in key belt

- Strong structural corridor with alteration & veining over 20km strike
- Fertile system only 60km from Tongon gold mine
- **2017 aircore drilling opens multiple >1g/t Au surfaces**
- **12m @ 2.04g/t & 12m @ 2.02g/t Au**
- Infill aircore in coming dry season



* For drill details refer to ASX Announcement 26 Feb 2016 "First Drilling Results Korhogo Gold Project Côte d'Ivoire", ASX Announcement 16 Mar 2016 "Further Drilling Results Korhogo Gold Project Côte d'Ivoire" and ASX announcement 24th July 2017 "Korhogo Project takes shape"

Gold Exploration programs and news flow

Western Australia

- **Rebecca Gold Project – 161 Lode follow-up RC/diamond drilling strike and plunge positions Nov & Dec 2017**
- **Yindi - First phase aircore Q1 2018**

Cote d'Ivoire

- **Boundiali** – sustained exploration 2017/8 dry season, soil sampling & aircore
- **Korhogo** – continued aircore to scope new gold surfaces 12m @ 2.04g/t Au
- **Seguela** – retained NSR
- **Opportunities** to add to Ivorian gold portfolio



* For RC intercept details refer to ASX Announcement dated 26 August 2012 “*Outstanding intercept of 42m @ 7.75 g/t Gold at Rebecca Project.*” and ASX Announcement dated 1 September 2016 “*RC Drilling Returns Wide Gold Intercepts at Rebecca Project, Western Australia*”

Disclaimer

This document has been prepared by Apollo Consolidated Ltd (ACN 102 084 917) (Apollo or the Company). No party other than Apollo has authorised or caused the issue of this document, or takes responsibility for, or makes any statements, representations or undertakings in this document.

Presentation of general background: This document contains general background information about Apollo's proposed activities current as at the date of this presentation (Information). It is Information in a summary form only and does not contain all the information necessary to fully evaluate any investment. Further information on Apollo can be obtained from its website; www.apolloconsolidated.com.au

Not investment advice: The Information provided in this presentation is not intended to be relied upon as advice to investors or potential investors and has been prepared without taking into account the recipient's investment objectives, financial circumstances or particular needs. Any investment decision should be made based solely upon appropriate due diligence and, if applicable, upon receipt and careful review of relevant offering documents. Recipients of this presentation are advised to consult their own professional advisers. An investment in any company, including Apollo, is subject to significant risks of loss of income and capital.

Financial data: All dollar values are in Australian dollars (A\$) unless otherwise stated.

Future performance: This presentation contains certain forward-looking statements. The words 'anticipate', 'believe', 'expect', 'project', 'forecast', 'estimate', 'likely', 'intend', 'should', 'could', 'may', 'target', 'plan' and other similar expressions are intended to identify forward-looking statements. Indications of, and guidance on, future earnings and financial position and performance are also forward-looking statements. Such forward-looking statements are not guarantees of future performance and involve known and unknown risks, uncertainties and other factors, many of which are beyond the control of Apollo, and its officers, employees, agents and associates, that may cause actual results to differ materially from those expressed or implied in such statements. Actual results, performance or outcomes may differ materially from any projections and forward-looking statements and the assumptions on which those assumptions are based. You should not place undue reliance on forward-looking statements and neither Apollo nor any of its directors, employees, servants, advisers or agents assume any obligation to update such Information.

Risks: An investment in Apollo's securities is subject to investment and other known and unknown risks, some of which are beyond the control of Apollo and Apollo's directors, employees, advisers or agents. Some of the risks associated with an investment in Apollo are set out in its Prospectus dated January 2012.

Competent Persons Statement

The information in this document that relates to Exploration Results is based on information compiled or reviewed by Mr Nick Castleden who is a director of the Company and a Member of the Australian Institute of Geoscientists. Mr Castleden has sufficient experience which is relevant to the style of mineralisation and type of deposit under consideration and to the activity which he is undertaking to qualify as a Competent Person as defined in the 2012 Edition of the 'Australasian Code for Reporting of Exploration Results, Mineral Resources and Ore Reserves'. Mr. Castleden consents to the inclusion in this document of the matters based on his information in the form and context in which it appears.

Exploration results referring to the Rebecca and Yindi Projects have been previously prepared and disclosed by Apollo Consolidated Limited in accordance with JORC Code 2004. The Company confirms that it is not aware of any new information or data that materially affects the information included in these market announcements. The exploration results previously prepared and disclosed under the JORC 2004 have not been updated since to comply with the JORC Code 2012 on the basis that the information has not materially changed since it was last reported. The Company confirms that the form and context in which the Competent Person's findings are presented here have not been materially modified from the original market announcement. Refer to www.apolloconsolidated.com.au for all past releases and details on exploration results.

Previously Released Exploration Results

With regard to the information in this document that relates to and is compiled from previously released Exploration Results, the Company confirms that it is not aware of any new information or data that materially affects such information.