



Redcliffe Gold Project

- Major developing gold project with existing resources
- Under explored – actively expanding extensive mineralised systems
- New discovery potential with high grade drill targets
- Primed for growth



Disclaimer

The information in this document has been prepared as of September 2017. The document is for information purposes only and has been extracted entirely from documents prior materials publicly filed with the Australian Securities Exchange and/or the Australian Securities and Investments Commission. This presentation is not an offer or invitation to subscribe for or purchase securities in the Company. The release, publication or distribution of this presentation in certain jurisdictions, may be restricted by law and therefore persons in such jurisdictions into which this presentation is released, published or distributed should inform themselves about and observe such restrictions. Certain statements contained in this document constitute “forward-looking statements” within the meaning of the United States Private Securities Litigation Reform Act of 1995 and forward looking information under the provisions of Canadian provincial securities law. When used in this document, the words “anticipate”, “expect”, “estimate”, “will”, “planned”, and similar expressions are intended to identify forward-looking statements or information. Such statements include without limitation: statements regarding timing and amounts of capital expenditures and other assumptions; estimates of future reserves, resources, mineral production, optimization efforts and sales; estimates of mine life; estimates of future external rates of return, mining costs, cash costs, mine site costs and other expenses; estimates of future capital expenditures and other cash needs, and expectations as to the funding thereof; statements and information as to the projected development of certain ore deposits, including estimates of exploration, development and production and other capital costs, and estimates of the timing of such exploration, development and production or decisions with respect to such exploration, development and production; estimates of reserves and resources, and statements and information regarding anticipated future exploration; the anticipated timing of events with respect to the Company’s mine sites and statements and information regarding the sufficiency of the Company’s cash resources. Such statements and information reflect the Company’s views as at the date of this document and are subject to certain risks, uncertainties and assumptions, and undue reliance should not be placed on such statements and information. Many factors, known and unknown could cause the actual results to be materially different from expressed or implied by such forward looking statements and information. Such risks include, but are not limited to: the volatility of prices of gold and other metals; uncertainty of mineral reserves, mineral resources, mineral grades and mineral recovery estimates; uncertainty of future production, capital expenditures and other costs; currency fluctuations; financing or additional capital requirements; costs of exploration and development programmes; mining risks; community protests; governmental and environmental regulation and the volatility of the Company’s stock price. For a more detailed discussion of such risks and other factors that may affect the Company’s ability to achieve the expectations set forth in the forward-looking statements contained in this document, see the Company’s Annual Report for the year ended 30 June 2016, as well as the Company’s other filings with the Australian Securities Exchange. The Company does not intend, and does not assume any obligation, to update these forward-looking statements and information.

Competent Persons Statement

The information in this presentation relates to Exploration Results is based on the information reviewed by Rodney Foster who is a member of the Australasian Institute of Mining and Metallurgy, Rodney Foster is a Director and full time employee of the Company. He has sufficient experience which is relevant to the mineralisation and type of deposit under consideration and to the activity which he is undertaking to qualify as a competent Person as defined in the 2012 Edition of the ‘Australasian Code for Reporting of Exploration Results, Mineral Resources and Ore Reserves’. Rodney Foster consents to the inclusion in this report of the matters based on his information in the form and context in which it appears. This information with respect to Resources was prepared and first disclosed under JORC Code 2004. It has not been updated since to comply with JORC 2012 on the basis that the information has not materially changes since it was last reported. A process of review is underway.

Corporate Summary

Board & Management

Paul Price	Chairman
Rodney Foster	CEO
Lloyd Jones	Non Executive Director
Mark Maine	Company Secretary
Lyle Thorne	Exploration Manager

Share Structure

Shares on Issue:	288.3 million
Market Cap:	\$16.4m (at 5.7c)
Top 20 holders:	52.4%
Directors Hold:	8.1%
Total Shareholders:	1,728
52 week price range:	\$0.035 – \$0.088



Redcliffe Gold Project

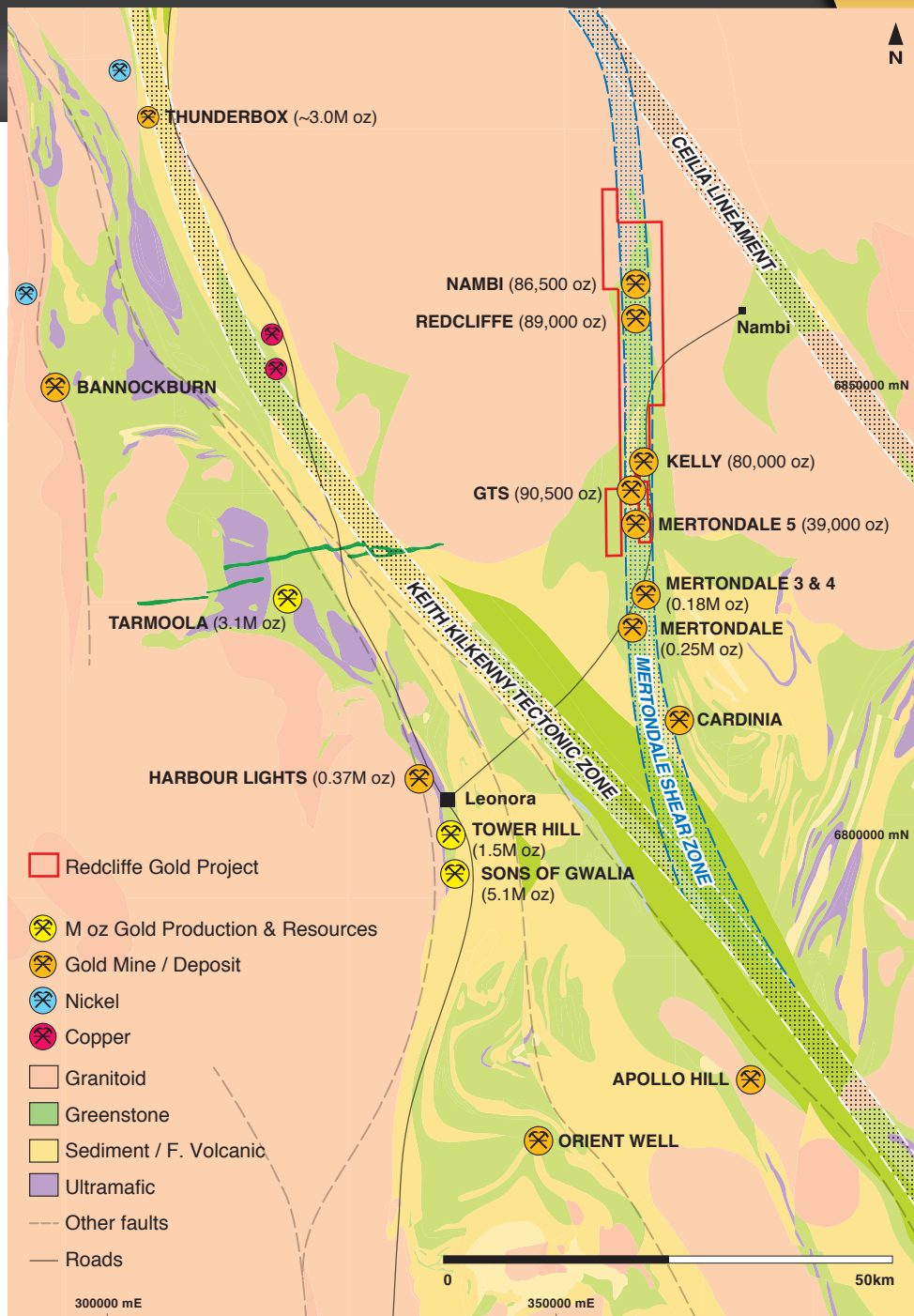
Regional Overview

- Eastern Goldfields, WA, 240km north of Kalgoorlie
- Leonora – excellent existing regional infrastructure
- The Mertondale Shear Zone
 - a regionally important deep seated link structure
 - conduit for gold bearing fluids
- Numerous shallow oxide deposits

Gold endowment

Regional: **+15Moz**

MSZ: **+1.4Moz**

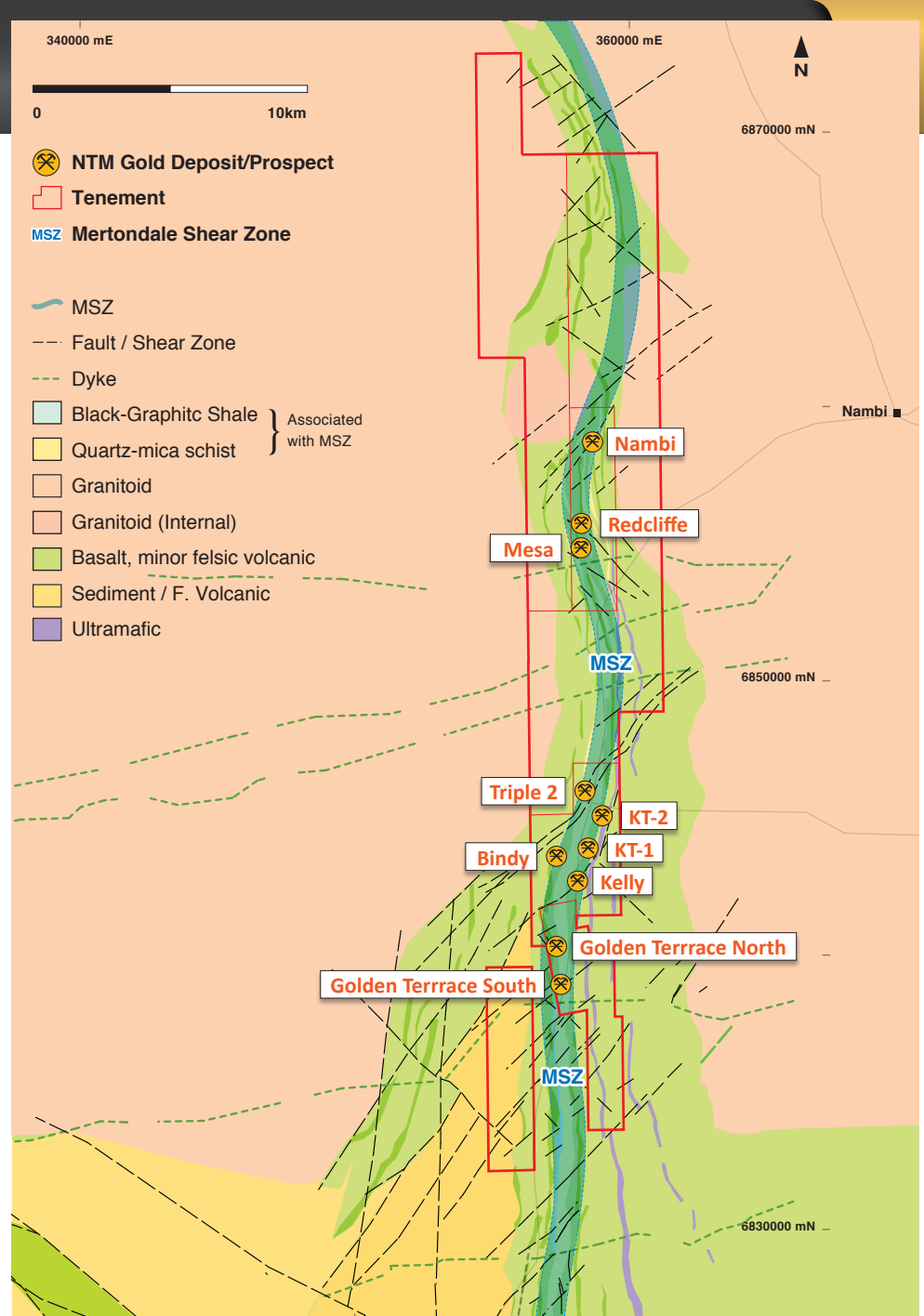


Redcliffe Gold Project

Project Overview

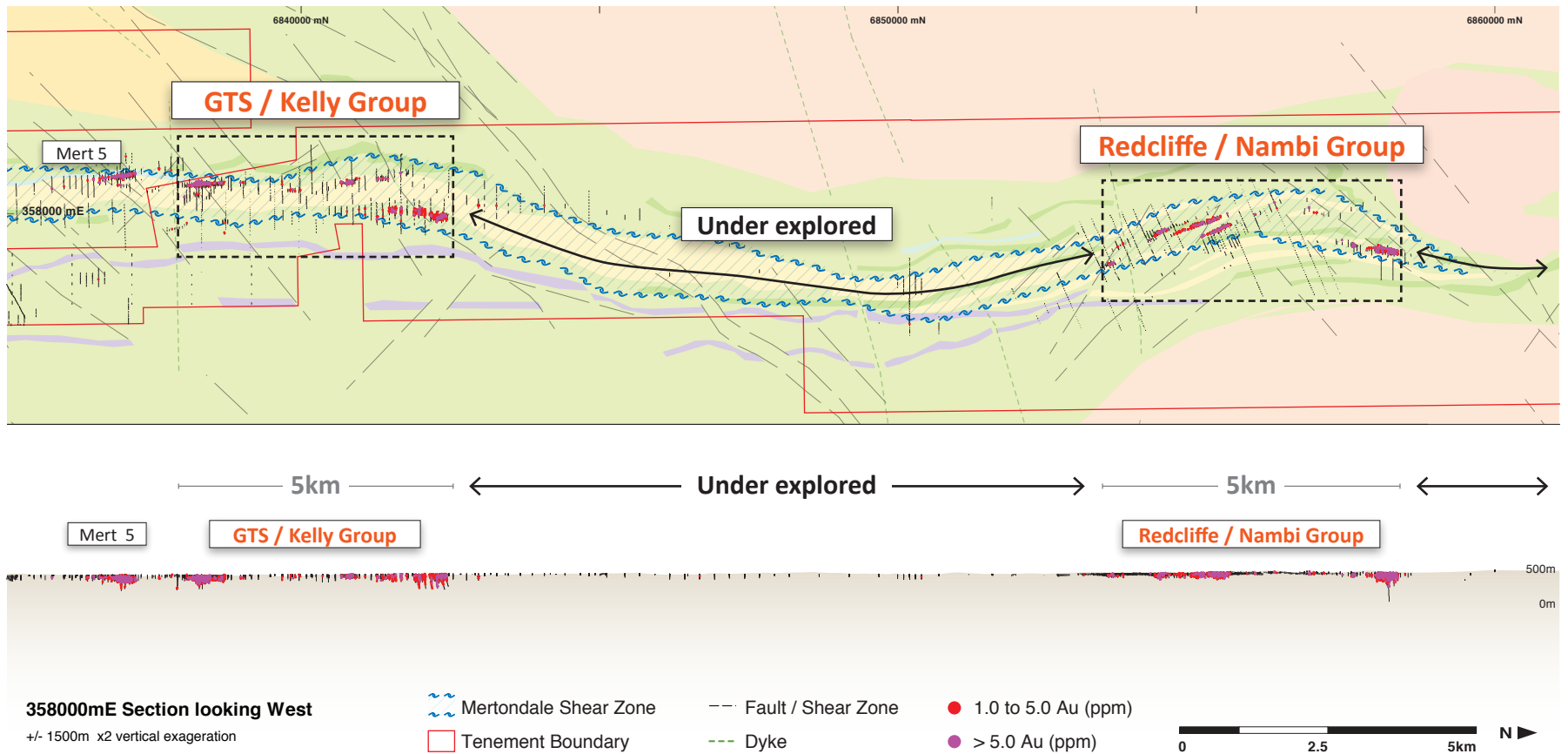
- Tenement area of 170km²
 - resources within granted mining licences
- Mertondale Shear Zone (MSZ)
 - Two mineralised bounding shears: Great Western Fault
Mertondale Fault
- Known deposits open along strike and at depth, still growing
- Underexplored
 - much of historical drilling too shallow
- Recent deeper drilling producing high grades
 - Nambi
 - Golden Terrace South

* See Appendix



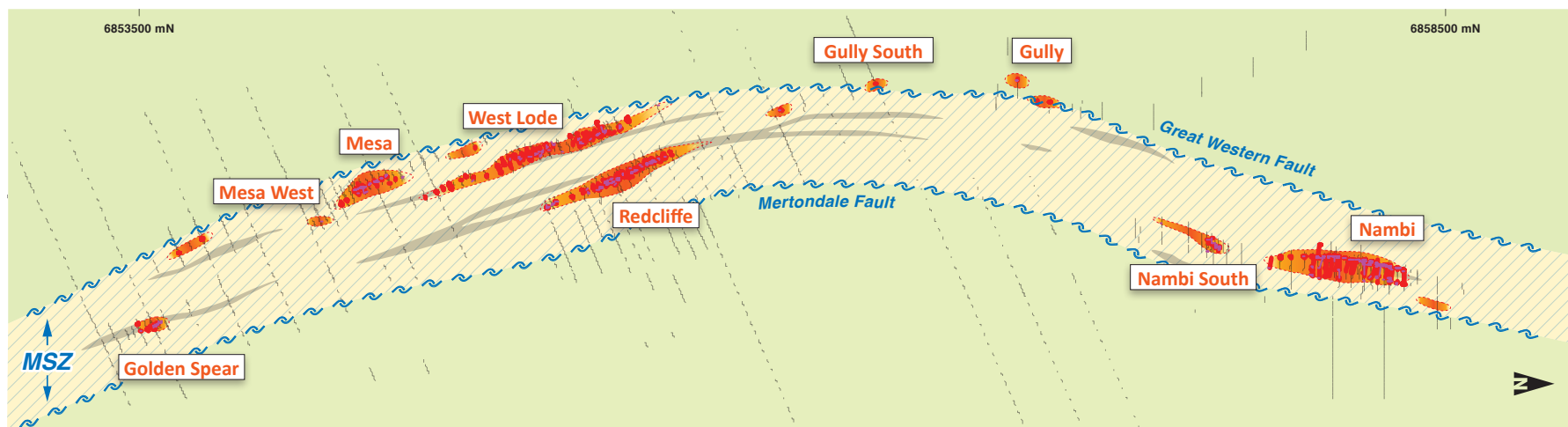
MSZ known deposits

- NTM Gold deposits to date occur in two groups: GTS / Kelly Group and Redcliffe / Nambi Group
- Intervening area is undercover and under explored



Redcliffe / Nambi Group

- Previous production in shallow open pits (3-4g/t) to ~60m
- Numerous priority targets to test
- Resources open along strike at depth
- Limited deeper (+200m) drilling completed
- potential at depth remains to be tested



Golden Spear

24m @ 4.30g/t
4m @ 41.9g/t

West Lode

17m @ 2.84g/t
3m @ 13.57g/t

Redcliffe

8m @ 4.09g/t
6m @ 4.46g/t

Gully South

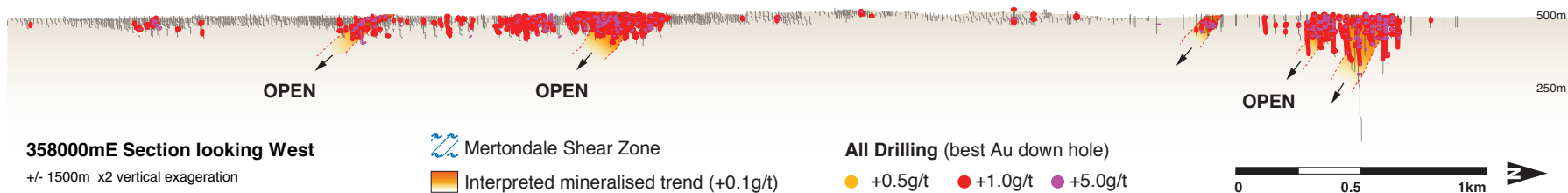
11m @ 2.57g/t

Nambi South

25m @ 3.57g/t
6m @ 4.65g/t

Nambi

6m @ 6.62g/t
10m @ 5.67g/t
10m @ 8.45g/t



358000mE Section looking West

+/- 1500m x2 vertical exaggeration

Mertondale Shear Zone

Interpreted mineralised trend (+0.1g/t)

All Drilling (best Au down hole)

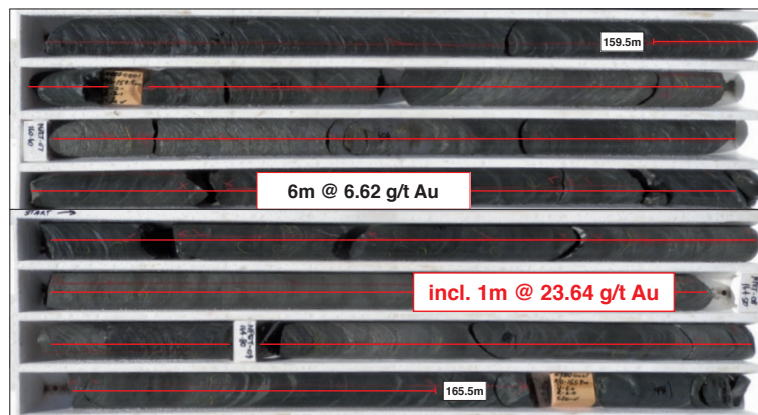
+0.5g/t +1.0g/t +5.0g/t



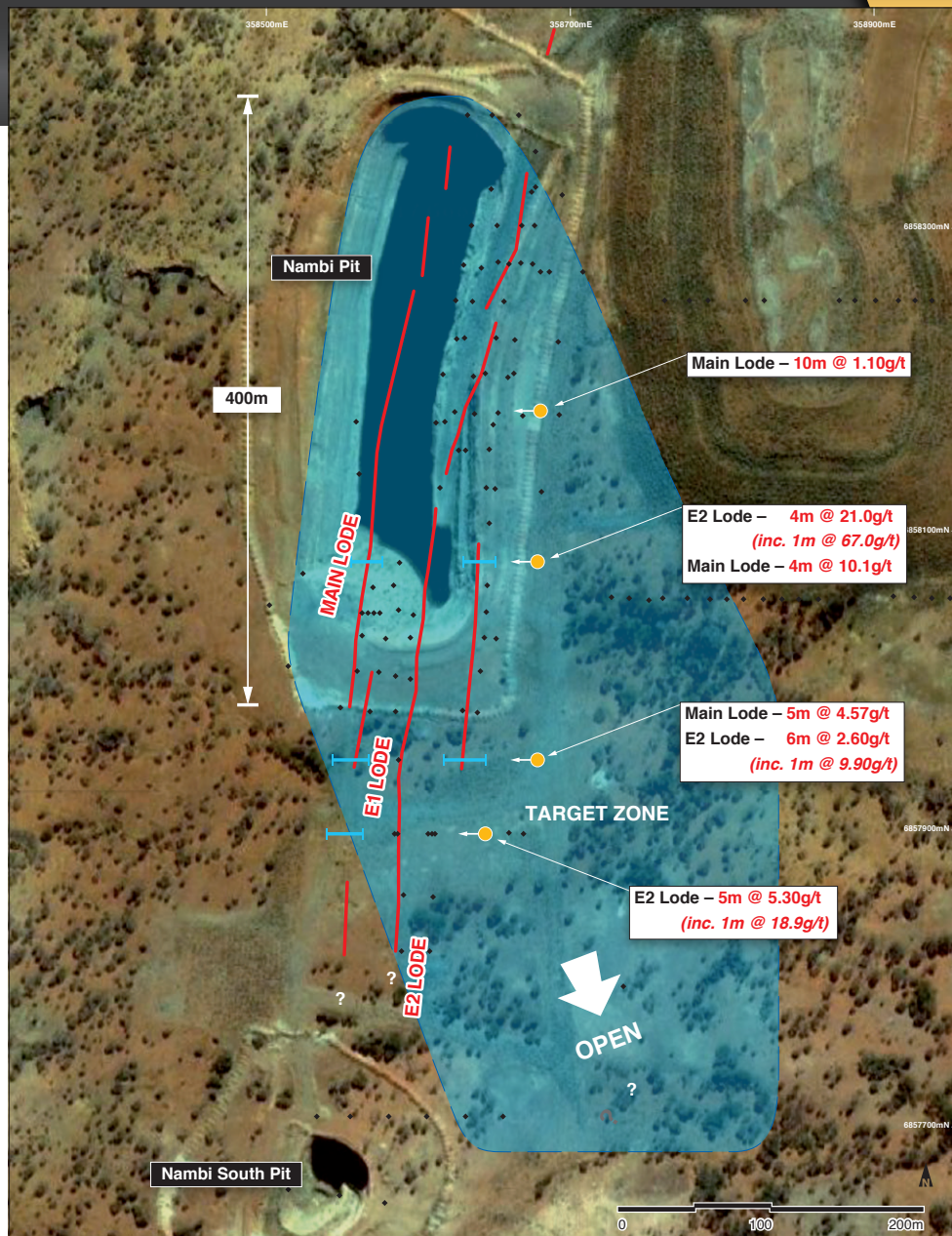
Redcliffe/Nambi Group

Nambi Deposit

- Nambi system shows strong continuity along strike and depth
- Recent RC
 - Exciting new target E2 Lode: **4m @ 21.0g/t**
(Inc. **1m @ 67.0g/t** highest assay to date)
 - Main Lode: **4m @ 10.1g/t** & **5m @ 5.30g/t**
- Open to south and down plunge
 - drilling planned Nov 2017



NBDD01 – Drilled August 2016.



Nambi Deposit
Drill Collar Location Plan

October 2017, GDA 94 Zone 51

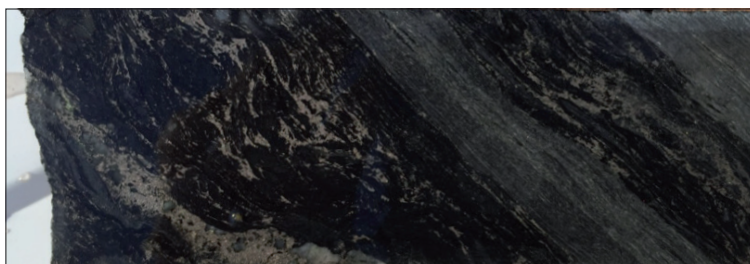


- ◆ Previous Drilling
- RC Hole Aug 2017
- Mineralised Zone
- Mineralisation Projected To Surface
- ↘ Interpreted plunge of high grade zones

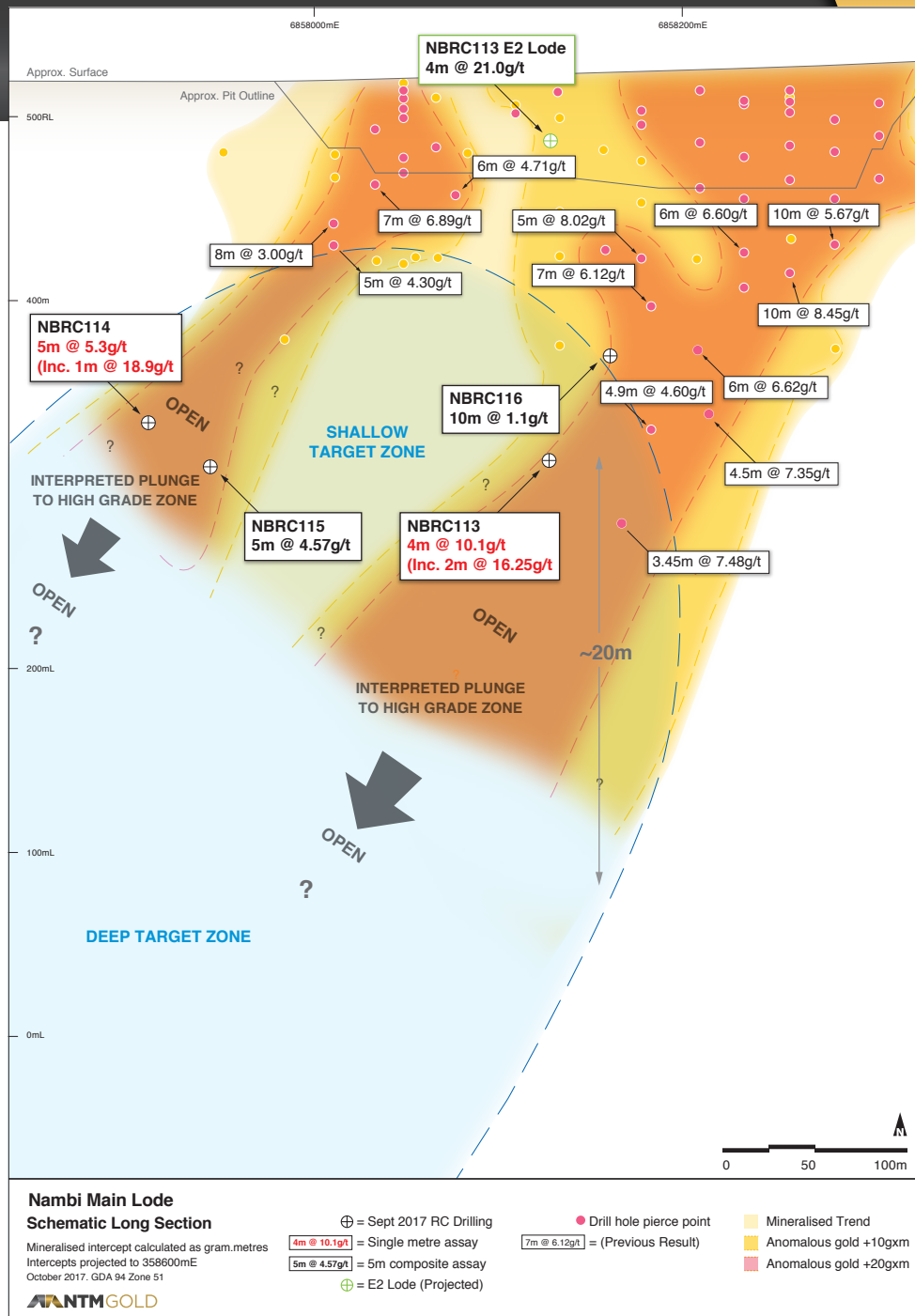
Redcliffe/Nambi Group

Nambi Deposit High Grade

- Coherent high grade mineralisation defined to ~180m beneath base of pit (Main Lode)
- Interpreted steep south plunging shoots
- Potential for open pit cut back and underground operation to depth
- Silica-pyrrhotite lodes in mylonitised sediment/volcanics

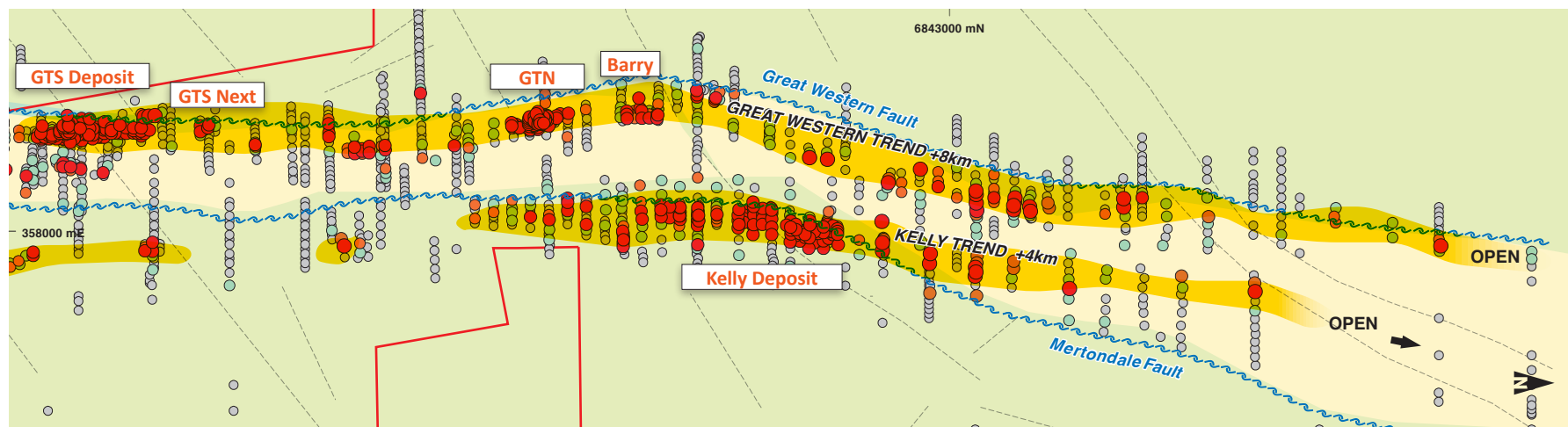


Main Lode: NBDD002 core @ 182.5m (top) and @ 184.3m (above).

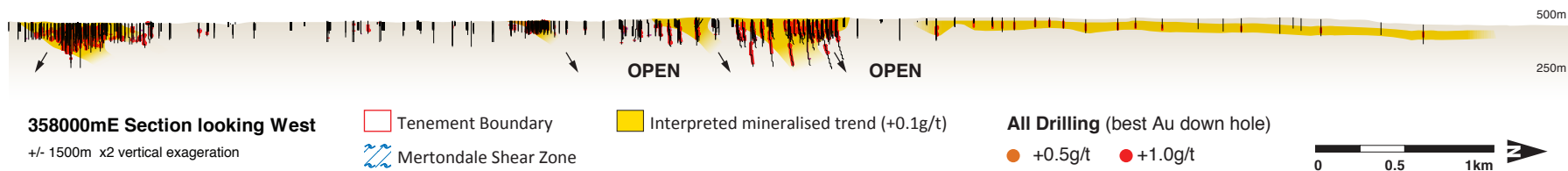


GTS / Kelly Group

- GTS and numerous prospects associated with Great Western Fault
- Kelly prospects associated with Mertondale Fault



GTS (+90,000oz)	GTS Next	GTN	Barry	Kelly (80,000oz)
66m @ 3.70g/t	3m @ 2.37g/t	12m @ 4.29g/t	6m @ 3.03g/t	15m @ 8.04g/t
44m @ 6.41g/t	12m @ 3.40g/t	3m @ 18.82g/t	3m @ 3.90g/t	9m @ 6.35g/t
12m @ 16.68g/t		4m @ 9.64g/t		24m @ 1.65g/t



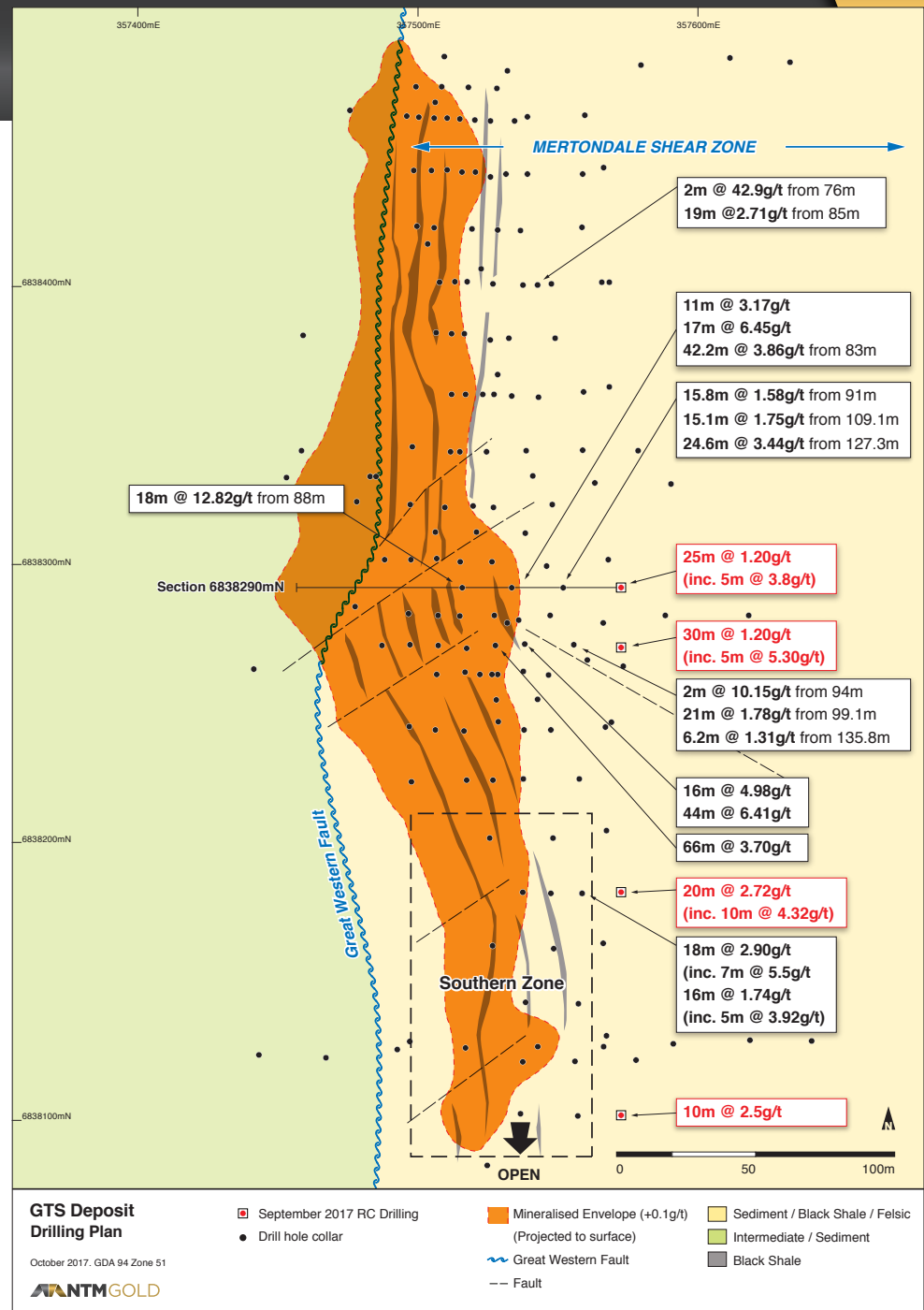
GTS Deposit

GTS Deposit: +90,000oz*

- Strong potential to expand
- Part of Great Western Fault Trend
- Open pit potential, primary high grade mineralisation – remains open
- RC drilling – November 2017
 - Extend mineralisation south

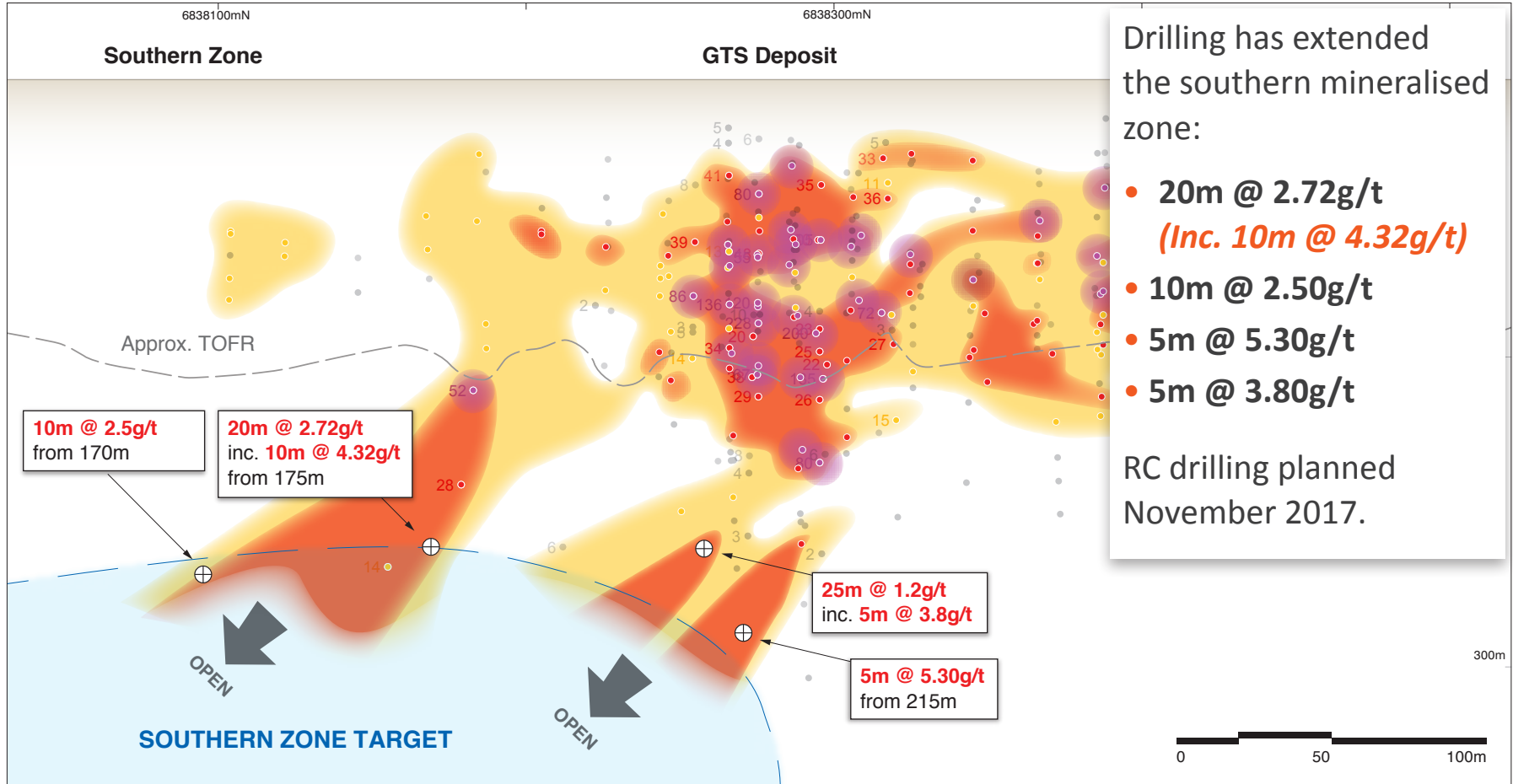
Recent drilling

- **Southern Zone:**
 - 18m @ 2.90g/t (inc. 7m @ 5.5g/t) from 112m
 - 20m @ 2.72g/t (inc. 10m @ 4.32g/t) from 175m
 - Remains open
- **Northern extension (GTS Next):**
 - 12m @ 3.40g/t (inc. 3m @ 7.2g/t) from 97m



* See Appendix

GTS Deposit Potential extensions



Drilling has extended the southern mineralised zone:

- 20m @ 2.72g/t
(Inc. 10m @ 4.32g/t)
- 10m @ 2.50g/t
- 5m @ 5.30g/t
- 5m @ 3.80g/t

RC drilling planned November 2017.

GTS Deposit Schematic Long Section 357530ME

Section looking West +/-25m
All drilling intercepts projected onto plane
October 2017. GDA 94 Zone 51

Drill holes

⊕ 20m @ 2.72g/t = September 2017 RC

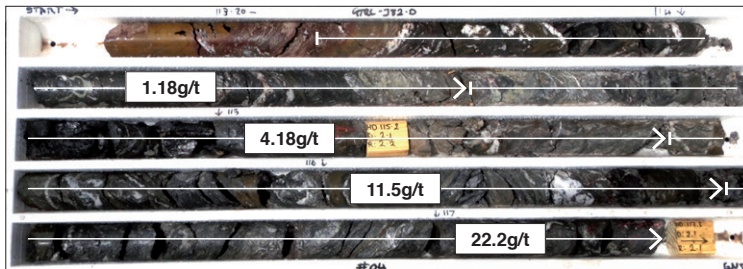
Mineralisation (gxm)

> 50
 10 to 20
 20 to 50
 2 to 10

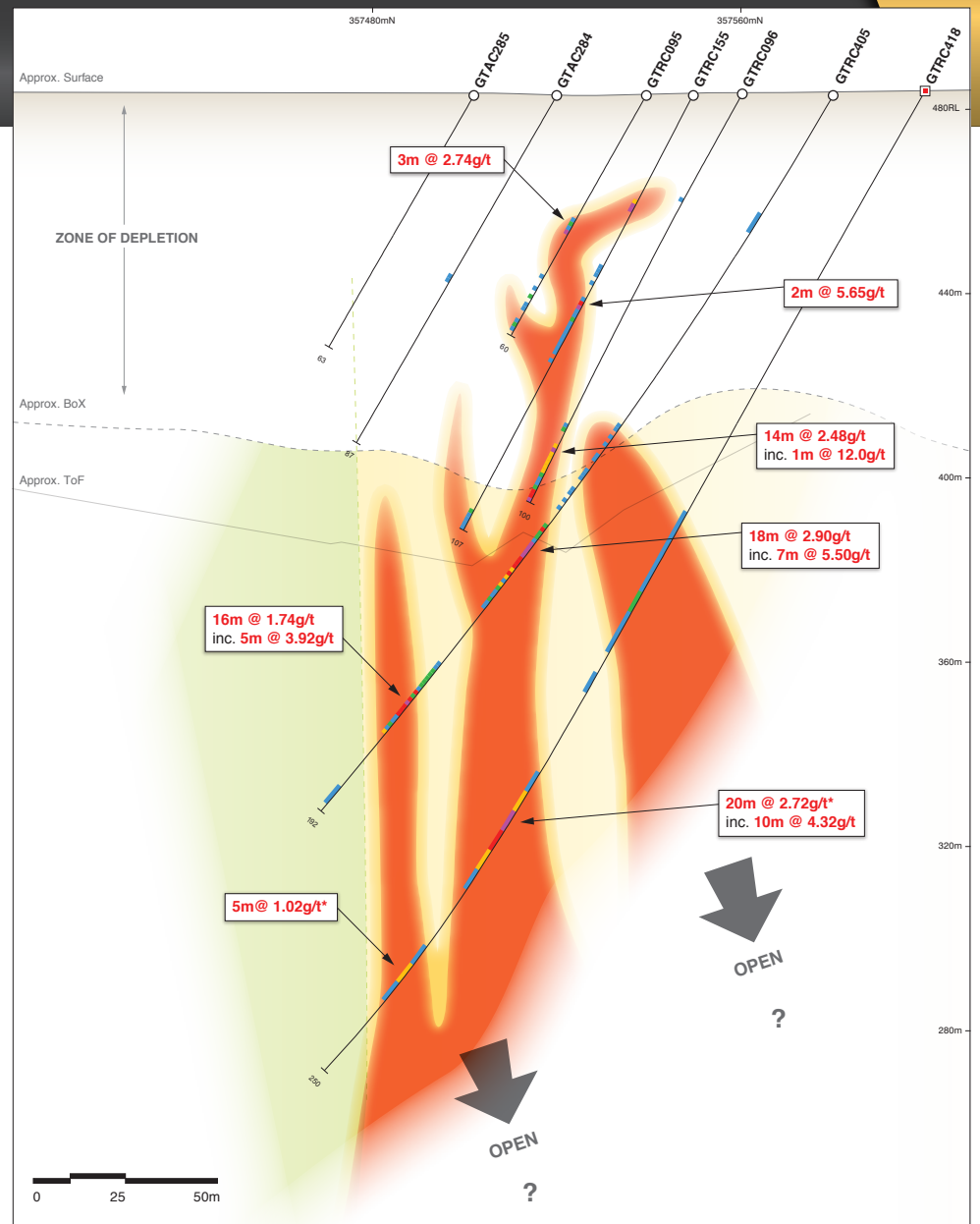
TOFR = Top of Fresh Rock

GTS Deposit High Grade Zone

- High grade mineralised zone hosted in felsic volcanics and sediments (inc. black shale).
- Strong structural control
 - plunging shoots, still yet to be fully tested.
- Primary mineralisation open at depth and along strike
 - Southern Zone
 - GTS Next



GTRC382D: 113.2 to 117.3m. Part of 8.8m @ 10.22g/t from within 29.2m @ 4.61g/t



Golden Terrace South
Schematic Section 6838180mN
 Section looking North +/-10m
 October 2017. GDA 94 Zone 51

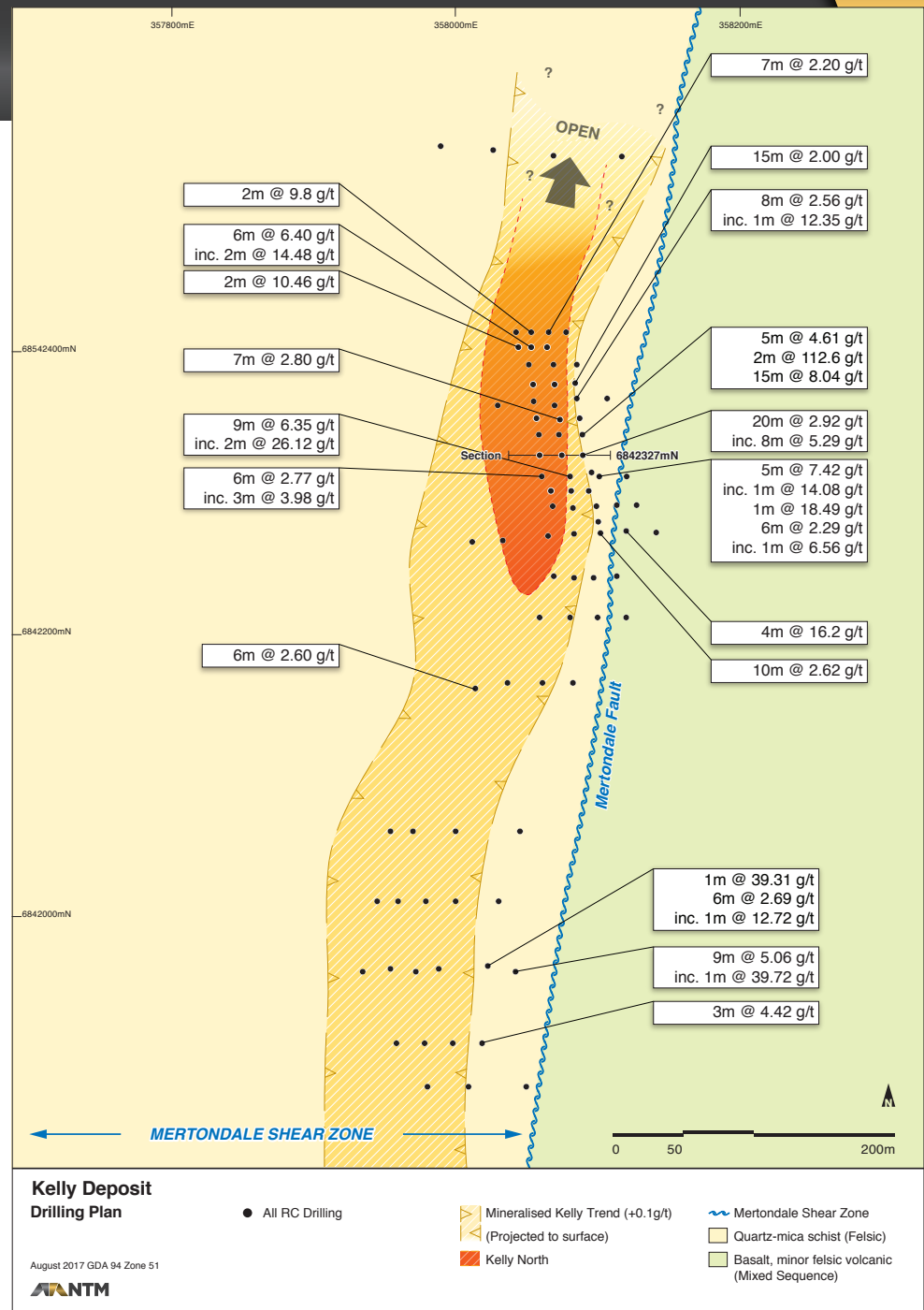
Hole type
 ■ RC drill hole Sept 2017
 ○ Drill hole
 ★ 5m Composite assay

Mineralised Zones
 ■ +0.1g/t
Results Au (ppm)
 ■ > 5.0
 ■ 2.0 to 5.0
 ■ 1.0 to 2.0
 ■ 0.5 to 1.0
 ■ 0.1 to 0.5

Simplified geology
 ■ Sediment / Black Shale / Felsic
 ■ Intermediate / Sediment
 BoX = Base of Oxidation
 FoF = Top of Fresh Rock

Kelly Deposit

- Part of Kelly Trend, located along Mertondale Fault (East side of MSZ)
- Very Large Mineralised zone drilled with RC, +2km strike, up to 100m wide
 - open along strike and at depth
- Kelly is a large lower-grade oxide deposit to ~90m deep
 - potential for open pit ‘mainstay’
- Higher grade areas within broad mineralised zone yet to be fully defined
 - **20m @ 2.92g/t (inc. 8m @ 5.29g/t)**
 - **9m @ 6.35g/t (inc 2m @ 26.12g/t)**
 - **2m @ 112.6g/t**
 - **15m @ 8.04g/t**
- Controls to primary high grade mineralisation under investigation
 - deep drilling planned



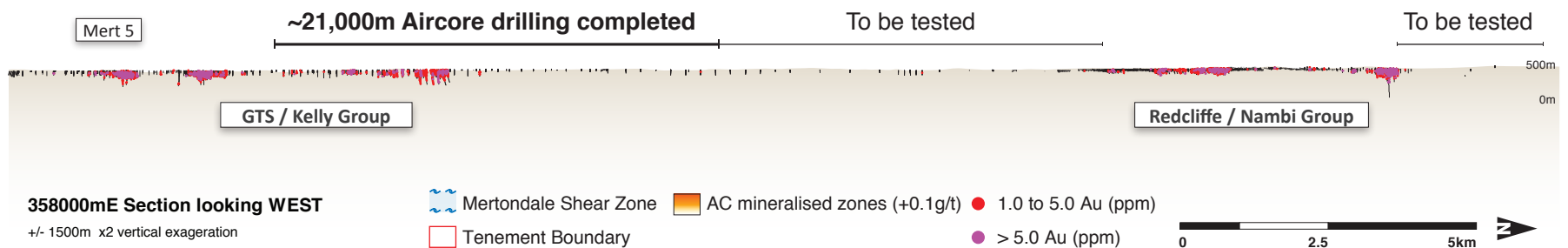
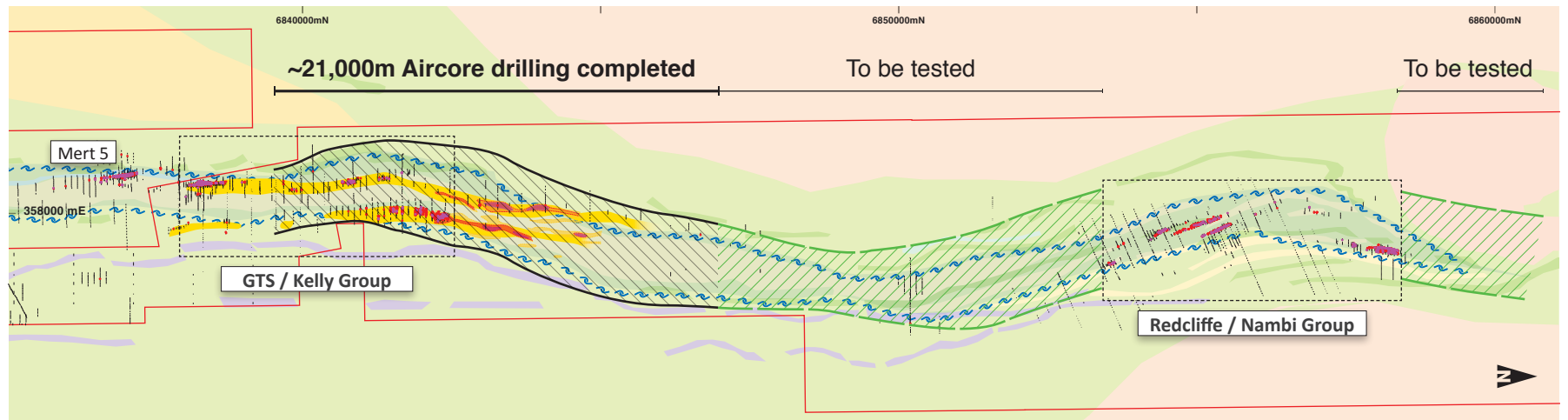
Regional Exploration 2017

Initial regional exploration drilling has identified extensive mineralised systems on kilometre scale, outlining several large targets. Initial RC drilling produced outstanding results requiring follow-up.



Exploring untested / undercover zones

- Regional systematic exploration commenced in April 2017
- Initial wide spaced Aircore, 241 holes drilled to date for approximately 21,000 metres advance
- Many holes ending in mineralization, quickly defining RC drill targets



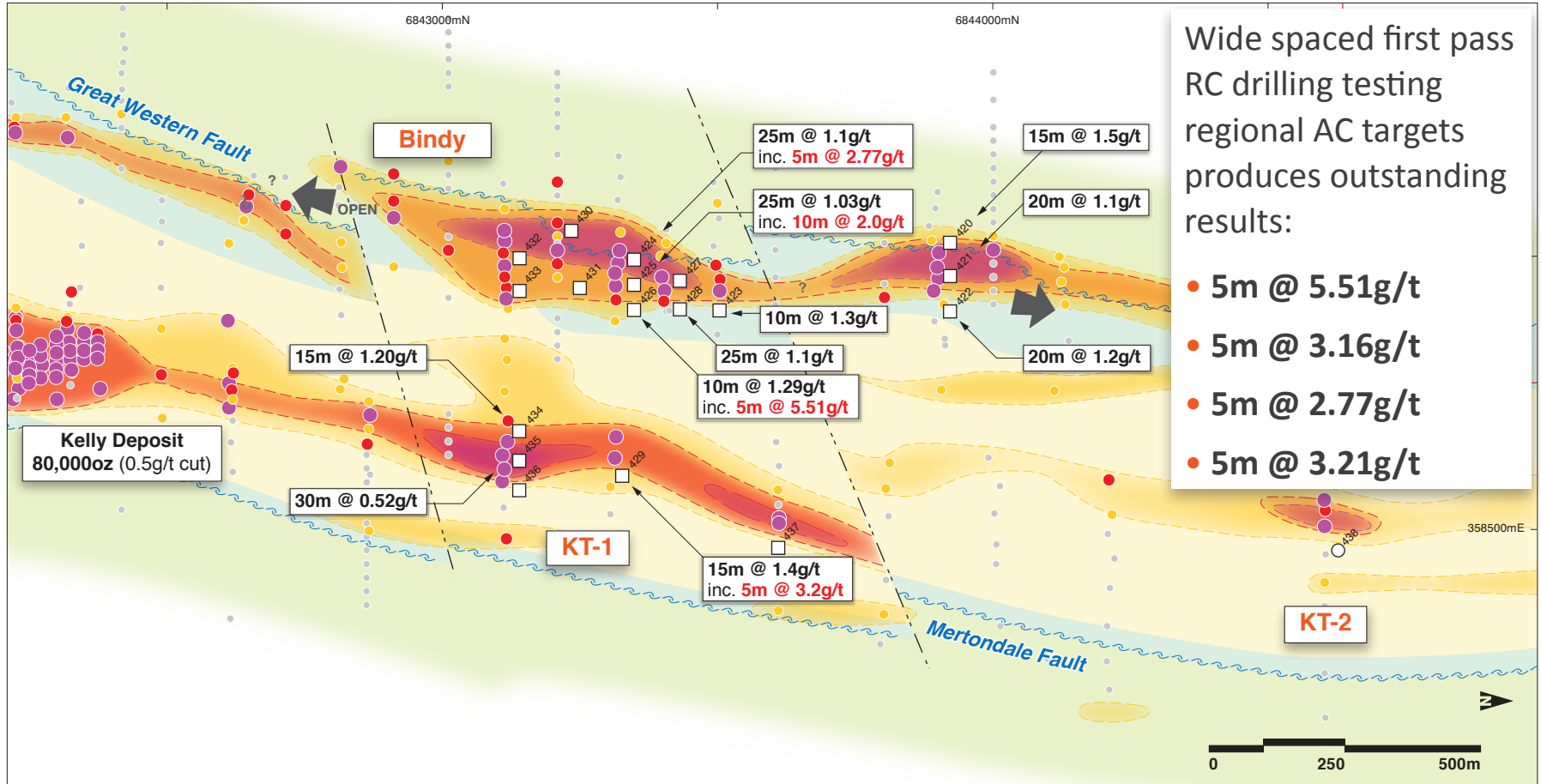
358000mE Section looking WEST
+/- 1500m x2 vertical exaggeration

~21,000m Aircore drilling completed To be tested To be tested

Legend:
Mertondale Shear Zone
AC mineralised zones (+0.1g/t)
1.0 to 5.0 Au (ppm)
> 5.0 Au (ppm)
Tenement Boundary



New Regional Targets – Bindy & Kelly Trend Prospects



GTS/Kelly Group 2017 Regional AC Drilling

Drill holes over Gram x metre plot
October 2017. GDA 94 Zone 51

Sept. RC
□ = GTRC 433

2017 AC
Best Au downhole (ppm)

- 1.01 to 20
- 0.11 to 0.5
- 0.5 to 1.0
- 0 to 0.1

Mineralisation (gxm)
(All Drilling)

- + 10
- + 5
- < 5

Simplified geology

- Mafic / Intermediate
- Felsic Vol \ Sediment
- Felsic Vol (Porphyritic)

MSZ
--- Fault

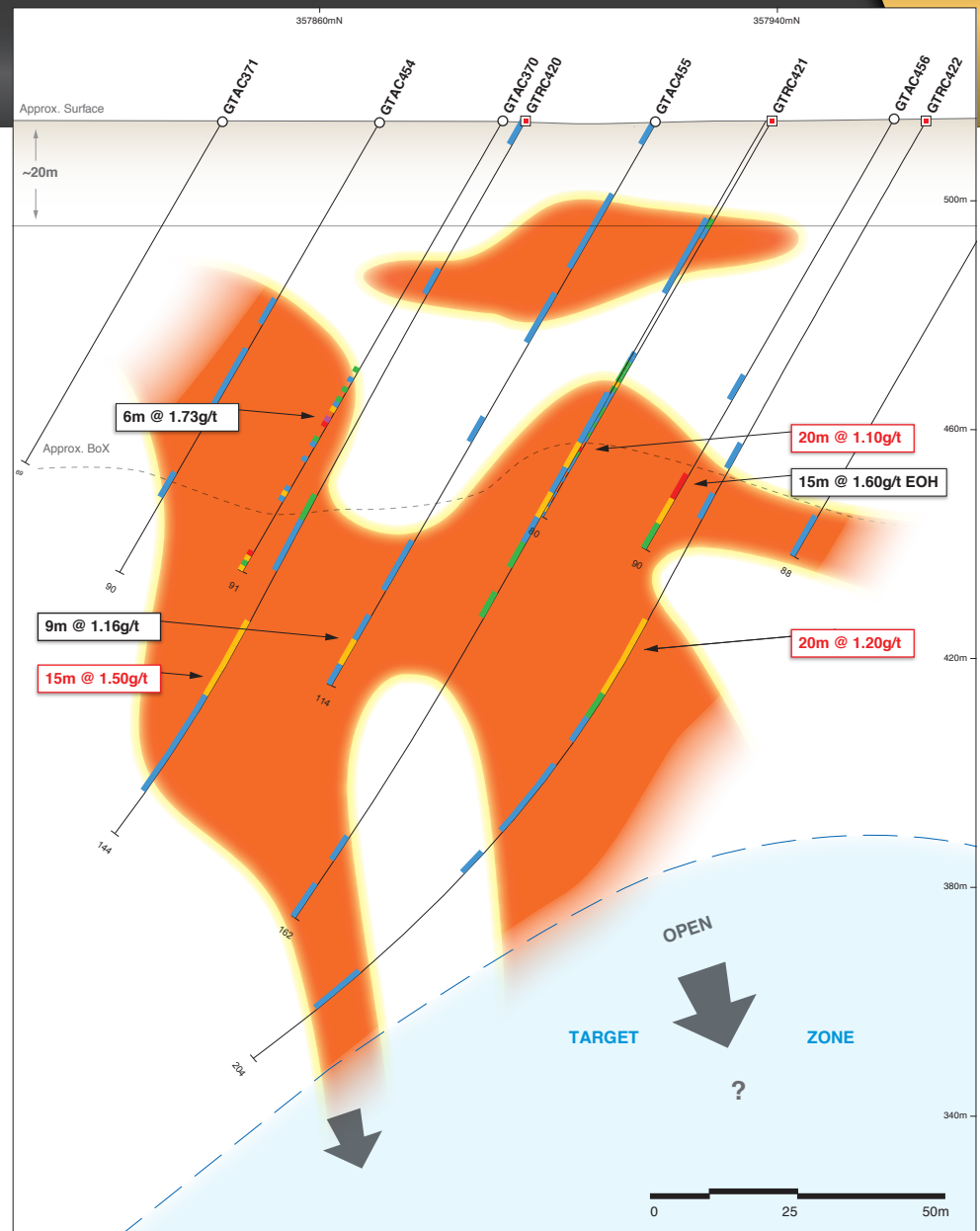
Regional Exploration

Bindy Prospect

- Large mineralized system
 - Open in all directions over 800m
- High grade intercepts within broad +1 g/t intervals
- First pass RC on 100m spaced sections
- Similar geology to GTS
- Further drilling planned
 - November 2017



Regional Exploration AC drilling 2017



Bindy Prospect

Schematic Section 6843960mN

Section looking North +/-20m
October 2017, GDA 94 Zone 51

Hole type

20m @ 1.20g/t = Sept RC Result

15m @ 1.60g/t = Aircore Result

GTRC420 = Sept RC hole

GTAC370 = Aircore hole

Mineralised Zones

+0.1g/t

Results Au (ppm)

> 5.0

2.0 to 5.0

1.0 to 2.0

0.5 to 1.0
0.1 to 0.5

12 month work plan

ACTIVITY	SEP	OCT	NOV	DEC	JAN	FEB	MAR	APR	MAY	JUN	JUL	AUG
REGIONAL												
AIRCORE												
RC												
DC												
BROWNFIELDS												
RC/RESOURCE												
DC												

Next 6 months

- Second phase of drilling at Nambi, GST & Regional (5000m – November 2017)
- Continue Regional Aircore Programme
- Ground Geophysics – Locate Nambi mineralisation along strike

Next 12 months

- Resource Drilling (New mineralized zones, depth and strike extension of existing mineralization)
- Continue RC drilling of new areas located from ongoing regional exploration
- Update Resource

Resource Estimates

Deposit	Indicated			Inferred			Total		
	Tonnes	g/t	ounces	Tonnes	g/t	ounces	Tonnes	g/t	ounces
GTS	707,000	2.46	56,000	684,000	1.56	34,000	1,391,000	2.02	90,500
Nambi	262,000	3.3	28,000	298,000	2.5	24,000	559,000	2.88	52,000
Redcliffe				560,000	1.7	31,000	560,000	1.7	31,000
West Lode				373,000	1.2	15,000	373,000	1.2	15,000
Mesa				95,000	1.5	5,000	95,000	1.5	5,000
GT North				64,000	1.53	3,200	64,000	1.5	3,200
Golden Spear				26,000	1.6	1,000	26,000	1.6	1,000
Kelly				2,412,000	1.04	80,400	2,412,000	1.04	80,400
TOTAL	969,000	2.7	84,000	4,512,000	1.33	193, 600	5,480,000	1.57	277,600

References:

1. Resources estimations were carried out by independent consultants as detailed below:

Golden Terrace South (GTS): BGMS (Kalgoorlie, 2011)

Mesa: Coffey Mining (Perth, 2008)

Nambi: Coffey Mining (Perth, 2008)

Golden Terrace North (GTN): BGMS (Kalgoorlie, 2011)

Redcliffe: Coffey Mining (Perth, 2008)

Golden Spear: Coffey Mining (Perth, 2008)

West Lode: Coffey Mining (Perth, 2008)

Kelly: BGMS (Kalgoorlie, 2012)