



Sipa Resources Limited

AGM PRESENTATION

2017

DISCLAIMER

This presentation has been prepared by Sipa Resources Limited (**Sipa**).

Summary of information: This presentation contains general and background information about Sipa's activities current as at the date of the presentation and should not be considered to be comprehensive or to comprise all the information that an investor should consider when making an investment decision. The information is provided in summary form, has not been independently verified, and should not be considered to be comprehensive or complete. It should be read solely in conjunction with the oral briefing provided by Sipa and all other documents provided to you by Sipa. Sipa is not responsible for providing updated information and assumes no responsibility to do so.

Not financial product advice: This presentation is not financial product, investment advice or a recommendation to acquire Sipa securities and has been prepared without taking into account the objectives, financial situation or needs of individuals. Before making an investment decision prospective investors should consider the appropriateness of the information having regard to their own objectives, financial situation and needs, and seek legal, taxation and financial advice appropriate to their jurisdiction and circumstances. Sipa is not licensed to provide financial product advice in respect of its securities or any other financial products. Cooling off rights do not apply to the acquisition of Sipa securities. Sipa assumes that the recipient is capable of making its own independent assessment, without reliance on this document, of the information and any potential investment and will conduct its own investigation.

Disclaimer: Sipa and its related bodies corporate and each of their respective directors, agents, officers, employees and advisers expressly disclaim, to the maximum extent permitted by law, all liabilities (however caused, including negligence) in respect of, make no representations regarding, and take no responsibility for, any part of this presentation and make no representation or warranty as to the currency, accuracy, reliability or completeness of any information, statements, opinions, conclusions or representations contained in this presentation. In particular, this presentation does not constitute, and shall not be relied upon as, a promise, representation, warranty or guarantee as to the past, present or the future performance of Sipa.

Future performance: This presentation contains certain forward-looking statements and opinion. The forward-looking statements, opinion and estimates provided in this presentation are based on assumptions and contingencies which are subject to change without notice, as are statements about market and industry trends, which are based on interpretations of current market conditions. Forward-looking statements, including projections, forecasts and estimates, are provided as a general guide only and should not be relied on as an indication or guarantee of future performance and involve known and unknown risks, uncertainties and other factors, many of which are outside the control of Sipa. Past performance is not necessarily a guide to future performance and no representation or warranty is made as to the likelihood of achievement or reasonableness of any forward looking statements or other forecast.

Risks: An investment in Sipa shares is subject to investment and other known and unknown risks, some of which are beyond the control of Sipa. You should have regard to the 'Key Risks' section of this presentation which outlines some of these risks.

Not an offer: This presentation is not, and should not be considered as, an offer or an invitation to acquire securities in Sipa or any other financial products and neither this document nor any of its contents will form the basis of any contract or commitment. This presentation is not a prospectus. Offers of securities in Sipa will only be made in places in which, or to persons to whom it would be lawful to make such offers. This presentation must not be disclosed to any other party and does not carry any right of publication. Neither this presentation nor any of its contents may be reproduced or used for any other purpose without the prior written consent of Sipa.

No Distribution in the US: This presentation is not an offer of securities for sale in the United States. Any securities to be issued by Sipa have not been and will not be registered under the US Securities Act of 1933, as amended (the "**US Securities Act**") and may not be offered or sold in the United States absent registration or an exemption from registration under the US Securities Act. No public offer of the securities is being made in the United States and the information contained herein does not constitute an offer of securities for sale in the United States. This presentation is not for distribution directly or indirectly in or into the United States or to US persons.

Monetary values: Unless otherwise stated, all dollar values are in Australian dollars (A\$). The information in this presentation remains subject to change without notice.

No distribution: Distribution of this presentation may be restricted by law. Persons who come into possession of this presentation should seek advice on and observe any such restrictions. Any failure to comply with such restrictions may constitute a violation of applicable securities laws.

JORC: The information in this report that relates to the exploration results previously reported in the ASX Announcements dated 22 April 2015, 17 November 2016, 1 December 2016, 22 February 2017, 24 May 2017, 19 June 2017, 18 September 2017, 22 September 2017, 12 October 2017 and 20 October 2017 The Company is not aware of any new information or data that materially affects the information included in those relevant market announcements.

OVERVIEW

- **Cutting edge explorer focussing on commodities with strong fundamentals**
- **First mover in under explored frontier mineral provinces**
- **High % of total spend in the ground, technically driven, interested only in large discoveries**
- **Ugandan nickel copper Sulphide discovery**
- **Emerging copper gold discovery in WA's Paterson**



Create shareholder wealth through discovery

- **Strong discovery track record**
- **Sulphur Springs copper-zinc (now owned by Venturex and under scoping study, Sipa royalty*)**
- **Ashburton Gold Deposit mined 1999-2004 (now 1.7 million ounces owned by Northern Star, Sipa royalty**)**
- **Enigma Copper (sold to Sandfire, Sipa royalty***)**
- **Share price curves show massive returns that flow from greenfields mineral discovery**

* \$2 each tonne of ore from the Sulphur Springs Tenements processed to produce zinc concentrate up to \$3.7M + Panorama royalty, 40% holder of a uncapped royalty equivalent to \$2 per dry metric tonne of all ore mined and processed

** 1.75% Gross Royalty on all gold production from the Tenements, excluding the first 250,000 ounces of gold produced, and the Merlin Tenements; 0.75% Gross Royalty on all gold production from the Merlin tenements, excluding the first 250,000 ounces of gold produced

*** 1.0% of the Net Smelter Return

CORPORATE



Capital Structure

ASX Code	SRI
Shares (Ord.) (13/11/17)	1096m
Share Price (13/11/17)	1.2c
Market Cap	\$13.16m
Cash (at 30/09/17)	\$1.4m
Raising Oct 2017	\$2.0m

Shareholders

JM Financial	9.6%
Rodiv NSW P/L Pension Fund	4.6%
Terry & Suzanne Kahler	2.3%
Directors & Management	1.5%
Total in top 20	31.0%

Board

Craig McGown	Chairman
Lynda Burnett	Managing Director
Karen Field	Non Executive Director
Tim Kennedy	Non Executive Director

HIGHLY EXPERIENCED BOARD



Multi-disciplinary skill-sets with extensive mining and exploration experience



Craig McGown – Non-Executive Chairman

Investment Banker over four decades consulting to companies in Australia and internationally particularly in the natural resources sector. Executive director of advisory business New Holland Capital. Chairman of Pioneer Resources Limited



Lynda Burnett – Managing Director

Previously Exploration Director Newmont Asia Pacific, involving management of all Newmont's generative exploration projects, and business development. Lynda has also worked for a number of mining companies including Director of Summit Resources Ltd, and at the Telfer and Boddington mines over a thirty year career.



Tim Kennedy – Non-Executive Director

Geologist with successful thirty year career most recently as Exploration Manager Independence Group NL. Involved in the discoveries of Tropicana and Karlawinda Bore gold, Rosie Nickel and Triumph base metal deposit at Jaguar. Non Executive Director of Millennium Minerals Limited



Karen Field – Non-Executive Director

Extensive mining operational management history in strategy, project management and human resources. Currently Non-Executive Director of Aurizon Holdings Limited and a number of NFP organisations such as WA Centenary Trust for Women and the Chair of the Perth College Foundation.

HIGHLY EXPERIENCED MANAGEMENT



Multi-disciplinary skill-sets with extensive mining and exploration experience



Tara Robson – Company Secretary – CFO, Investor Relations

Over twenty years of experience managing listed entities including Anvil Mining and Brockman Resources. Fellow of Governance Institute.



Lynda Burnett – Managing Director

Previously Exploration Director Newmont Asia Pacific, involving management of all Newmont's generative exploration projects, and business development. Lynda has also worked for a number of mining companies including Director of Summit Resources Ltd, and at the Telfer and Boddington mines over a thirty year career.



Joshua Tuhumwire – Director Sipa Exploration Uganda Limited

Geologist ex Ugandan Department of Geological Survey and Mines (DGSM) 1980 to 2010. Commissioner of the DGSM from 2001 to 2010, initiated and implemented the US\$47.7 million Sustainable Management of Mineral Resources Project, included the flying of country airborne magnetic/radiometrics and regional geological mapping. Founder Director/CEO of Gondwana Geoscience Consulting Ltd, based in Entebbe, UG.



Bill Willmott – Uganda Country Manager

Extensive experience in the mineral exploration industry for the past 30 years including managing geophysical field crews throughout Australia for WMC. For the last 15 years Bill has been the Field Operations Manager for Sipa Resources Limited and Country Director of Sipa Exploration Uganda Limited since January 2013.

COMMODITY FOCUS

Demand predicted to skyrocket due to increasing EV* and battery market demands



28	29	79
Ni	Cu	Au
Nickel	Copper	Gold
58.693	63.546	196.97

Gold a continued hedge against global currencies in an ever increasing uncertain world

Prices up 50% over past year, increased demand from EV* sector, tight supply and lack of good projects coming online

* Electric vehicle

FAST FACTS about Nickel * Source Visual Capitalist

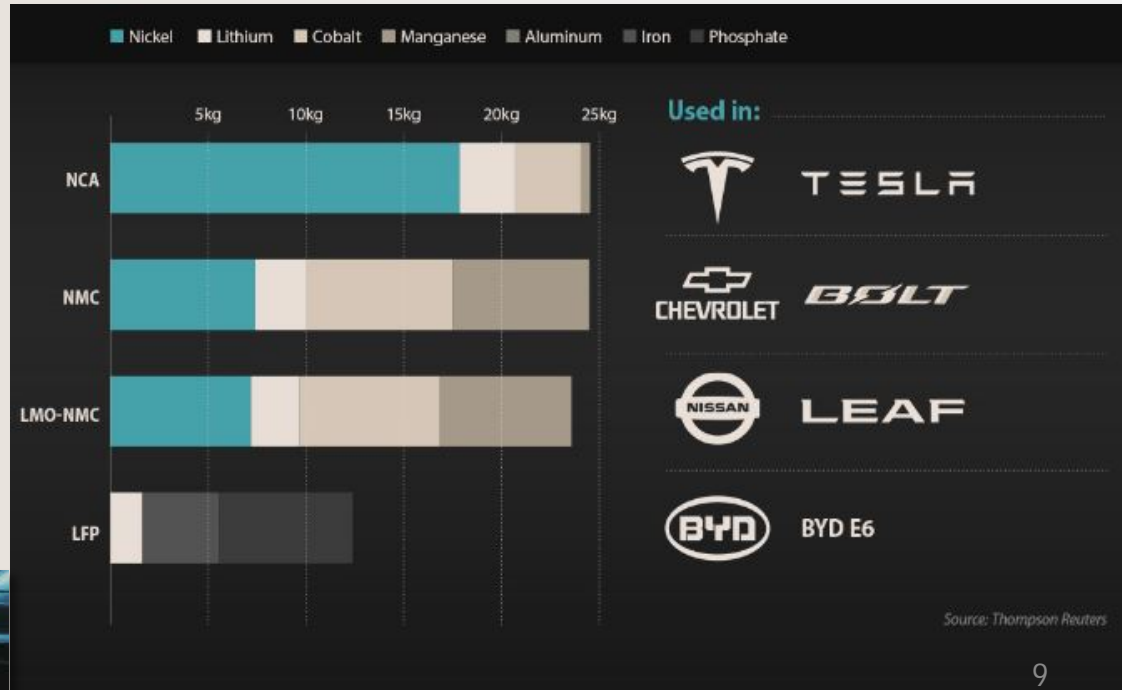
1..Nickel in lithium ion batteries is most important metal by mass

Elon Musk – CEO Tesla

“Our cells should be called Nickel-Graphite because primarily the cathode is nickel and the anode side is graphite with silicon oxide...”

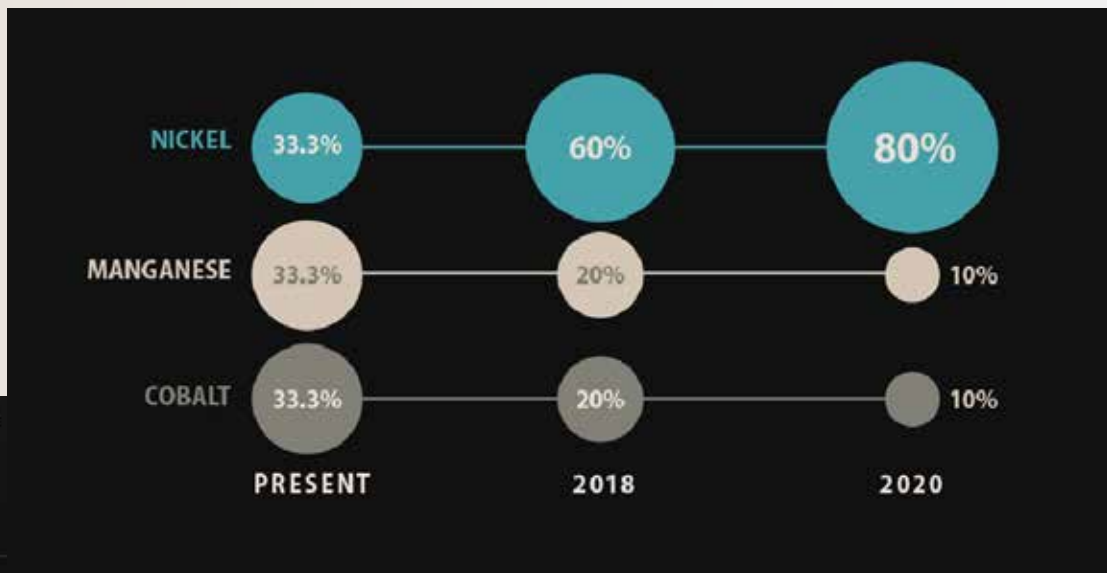
[there’s] a little bit of lithium in there but its like the salt on the salad”

But as to Elon Musk’s point above, nickel is the most important metal by mass in li-ion battery cathodes.



FAST FACTS about Nickel * Source Visual Capitalist

2.. Nickel is projected to increase from 33% of the mass to 80% by 2020 in NMC



Even more importantly, future battery chemistries **will have more nickel, not less.**

In fact, according to UBS, the popular NMC cathode formulation used by the Chevy Bolt is expected to lean heavily on nickel in the coming years.



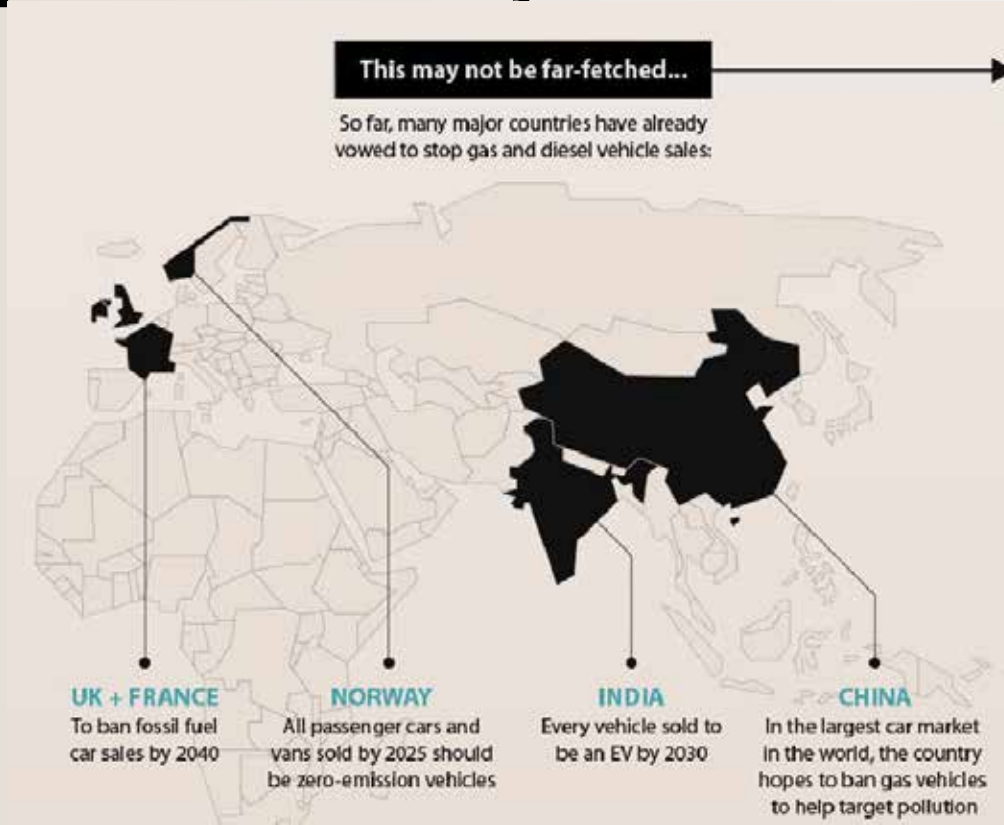
Why more nickel?

Every new generation of NMC is getting optimized for more nickel to increase energy density by ~20%, while reducing total raw material costs.

Together, these improvements help make each kWh of battery storage capacity more cost competitive to manufacture.

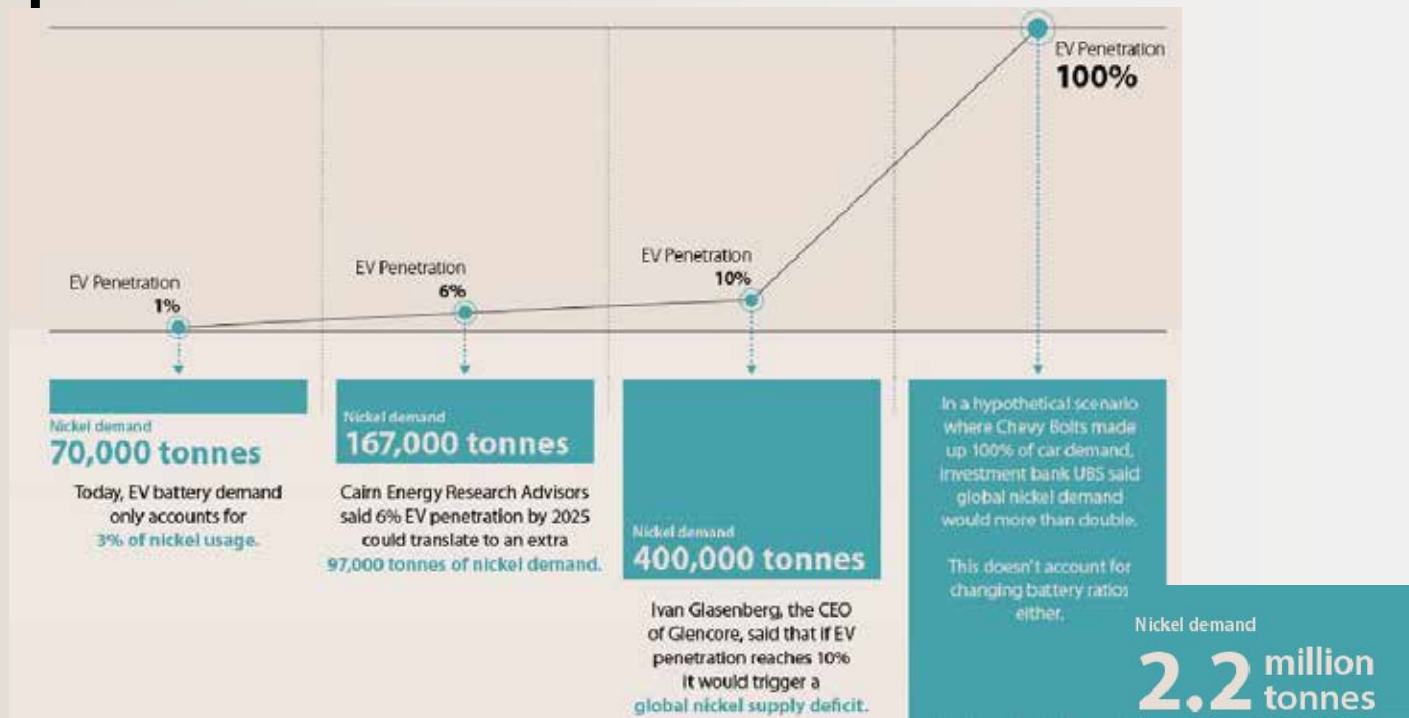
FAST FACTS about Nickel * Source Visual Capitalist

3.. EV market penetration to skyrocket in next 20 years



FAST FACTS about Nickel * Source Visual Capitalist

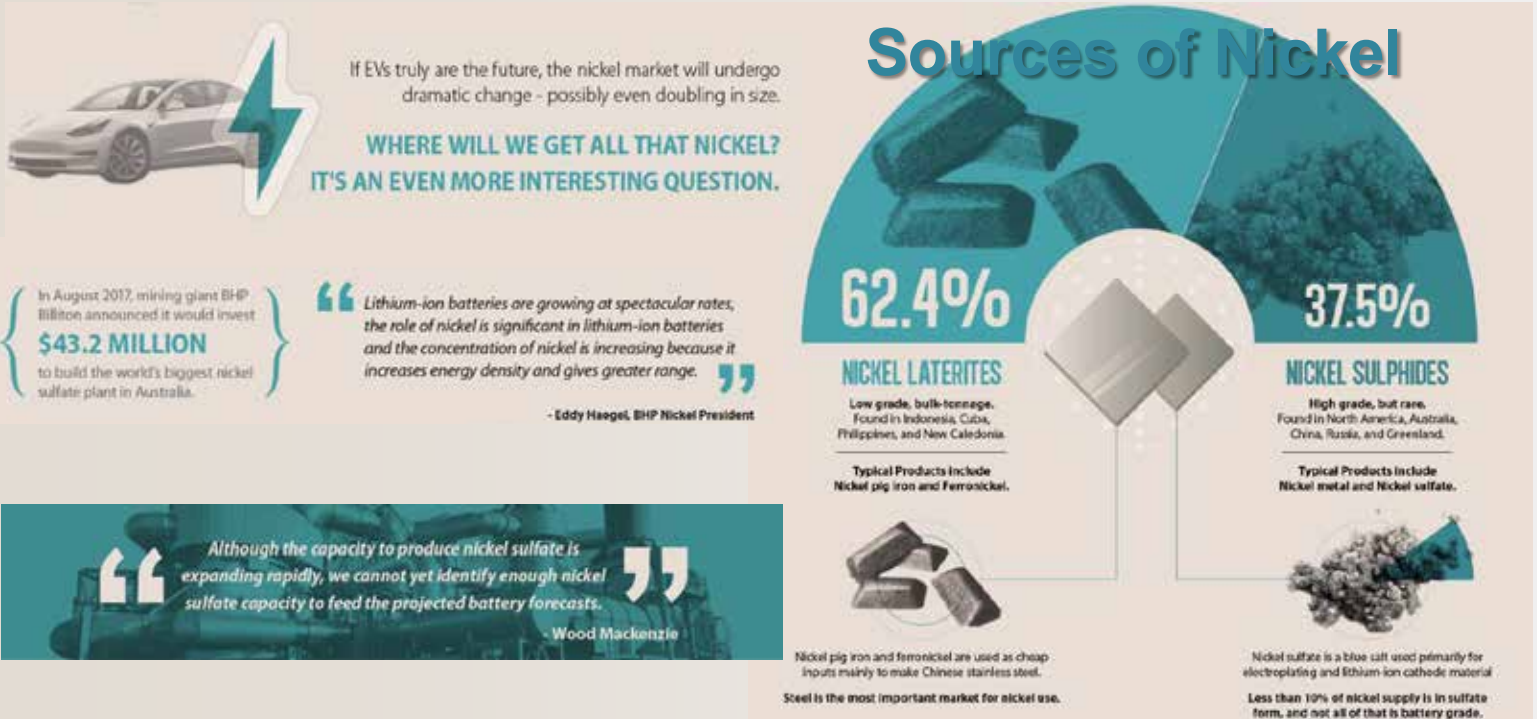
4.. The effect of nickel demand for every % increase in EV market penetration





FAST FACTS about Nickel * Source Visual Capitalist

5.. EV and batteries use nickel sulphate best sourced from nickel sulphides not nickel laterites or nickel pig iron



FAST FACTS about Nickel

6.. Due to prolonged down turn almost no exploration for nickel has been conducted in the past 5 years and very few new discoveries have been made

Sipa is one of the few companies globally to have made an important nickel sulphide discovery in recent years



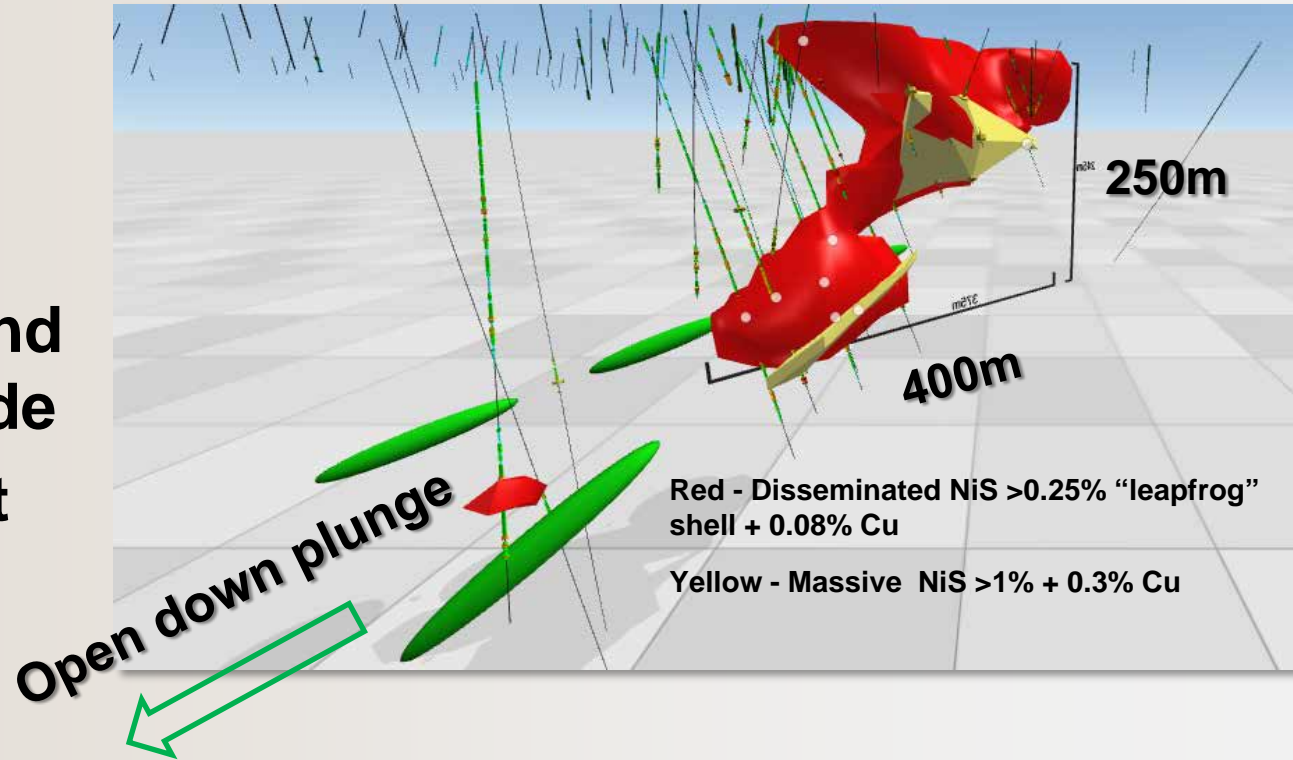
SIPA - UGANDA

- **Nickel sulphide discovery at Akelikongo northern Uganda**
- **Only drilled 5750m for 24 RC/DD holes**
- **Few holes greater than 50m deep and open down plunge**
- **Field work in 2017 shows that this may be a province of “Akelikongo suite intrusions”**
- **Sipa has exposure to entire belt with 100% tenement ownership**



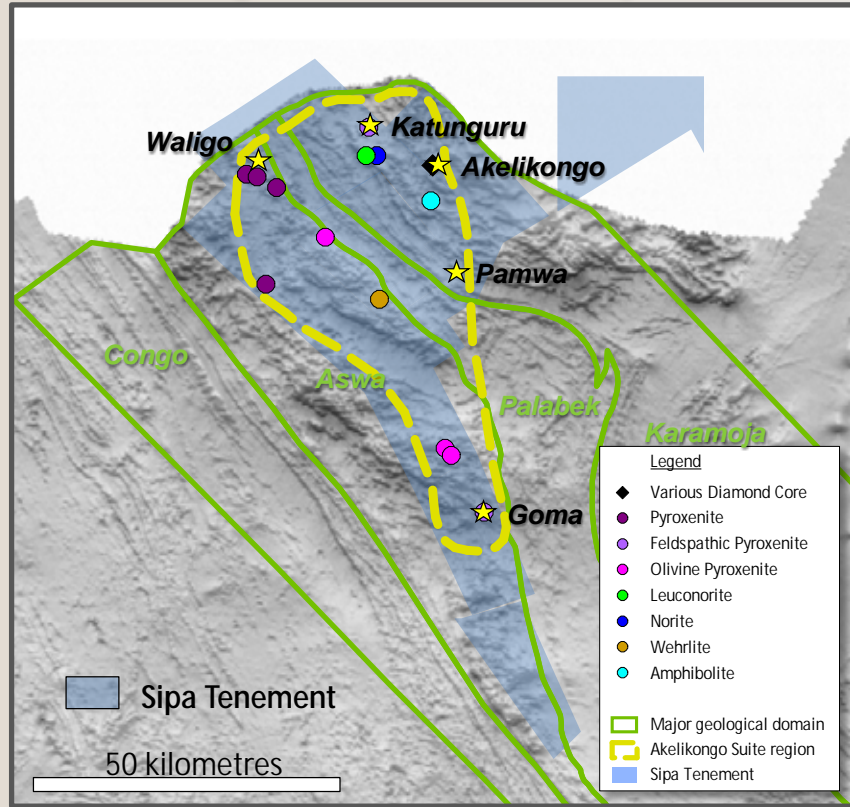
SIPA - UGANDA

- **Nickel Sulphide discovery at Akelikongo consists of disseminated and massive sulphide**
- **Extends at least 400m from surface**



EXPOSURE TO ENTIRE NI PROVINCE

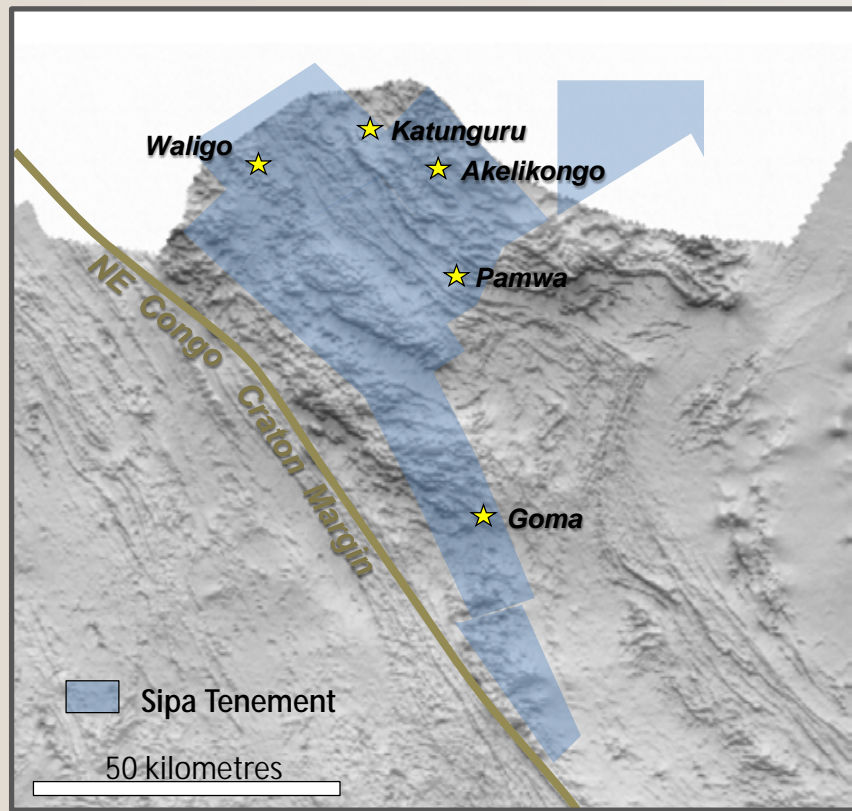
Kitgum Pader Project



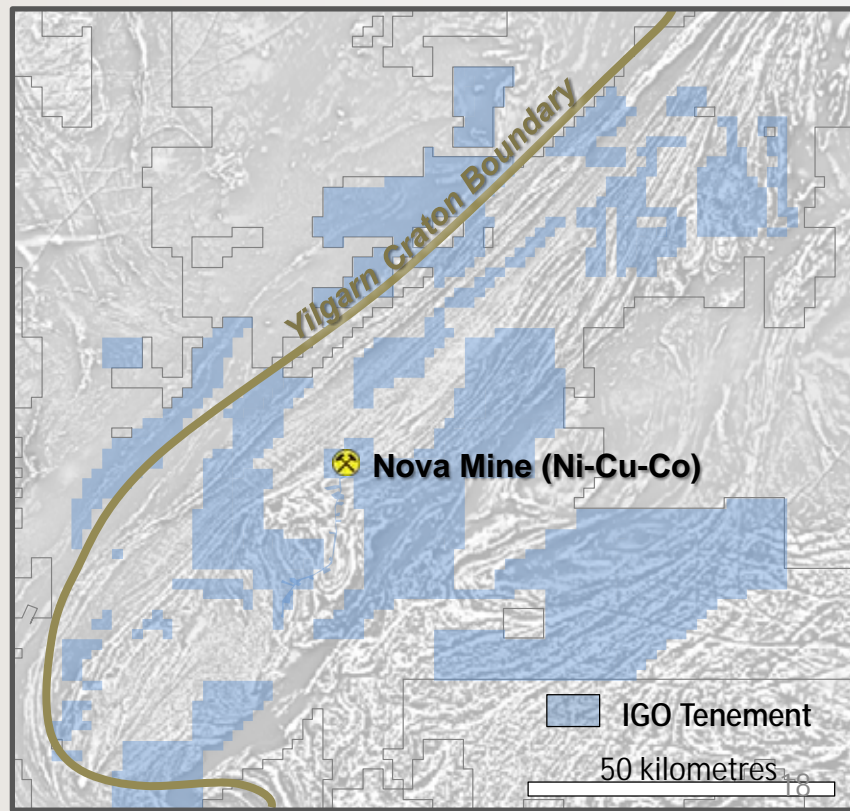
- Field work in 2017 has potentially identified an 80km by 30km corridor of “Akelikongo like Intrusives”.
- If geochemistry confirms this we will prove nickel sulphide potential across the entire tenement package

EXPOSURE TO ENTIRE NICKEL PROVINCE

Kitgum Pader Project



Compare with Fraser Range IGO



INTRUSIVE NICKEL SULPHIDES



- **Located near craton margins ie Nova, Raglan, Savannah, Voiseys Bay**
- **Complex pipelike continuous structures which need persistence and \$ to explore, once discovered.**
- **At Akelikongo drilled only 25 holes for 5750 m (very early in the discovery process)**
- **Now needs a step change in program scope to test (needs at least 6 to 10 deep diamond holes)**

PATERSON NORTH WESTERN AUSTRALIA

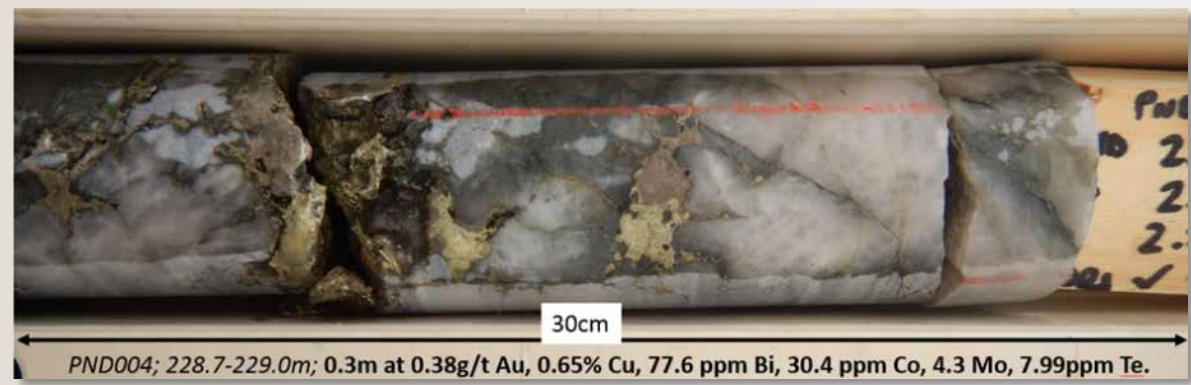


- **Key commodities gold copper**
- **Key position in an emerging and world class gold and copper mineralised belt (Telfer at 25Moz is world class)**
- **Paterson North has the address and the credentials and was, prior to Sipa/Ming - almost unexplored**



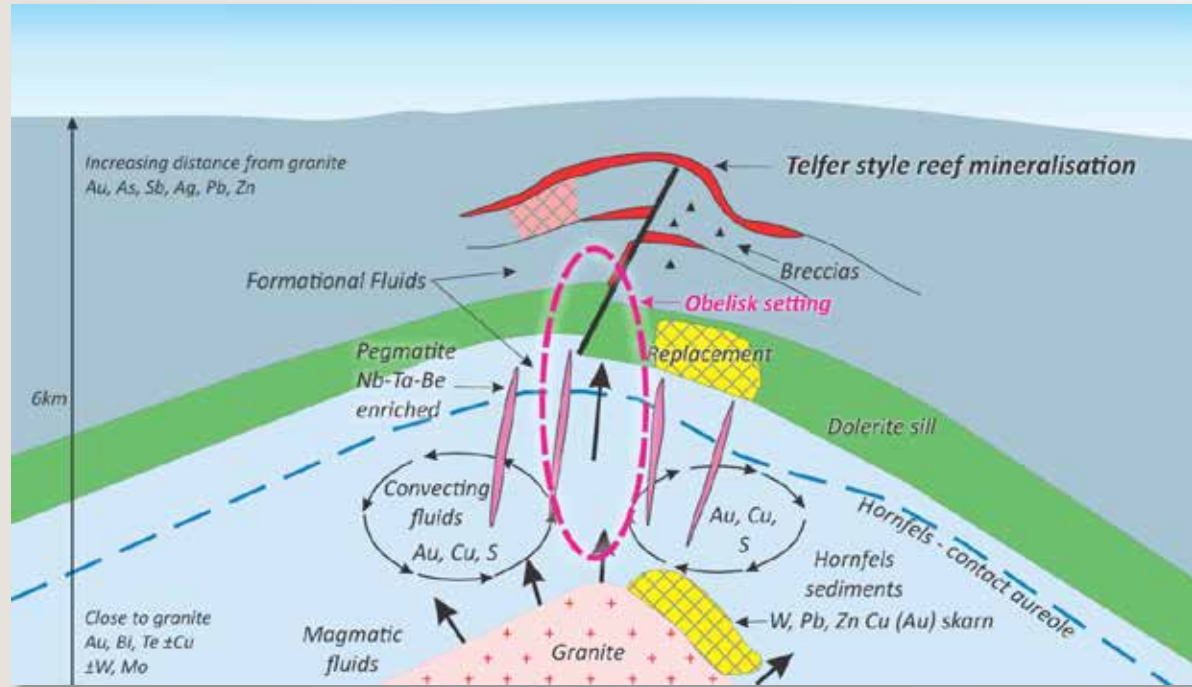
PATERSON NORTH – KEY BREAKTHROUGH

- **Successful application of new drilling and other technologies ie TIMA, geophysics applied under cover**
- **Sipa has gone from a concept with one anomalous hole to proving the existence of a large mineral system kms long with high grade gold and copper controls identified**



INTRUSION RELATED GOLD SYSTEM

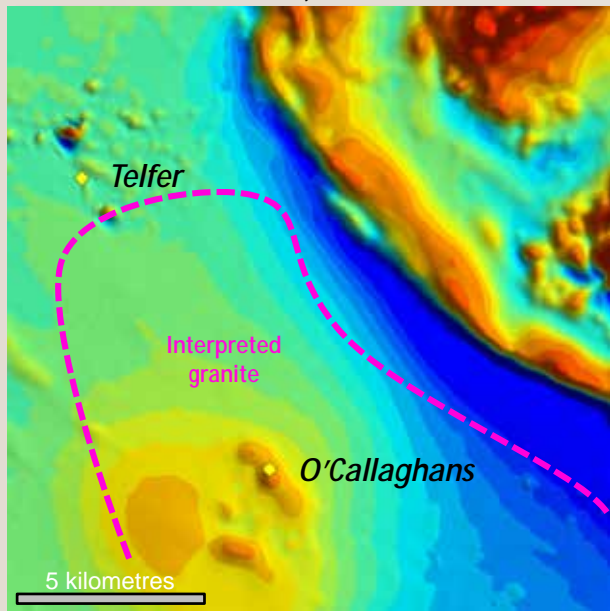
- Now know what we are working with
- Very important breakthrough for targeting and understanding economics
- CSIRO partnership important in this work



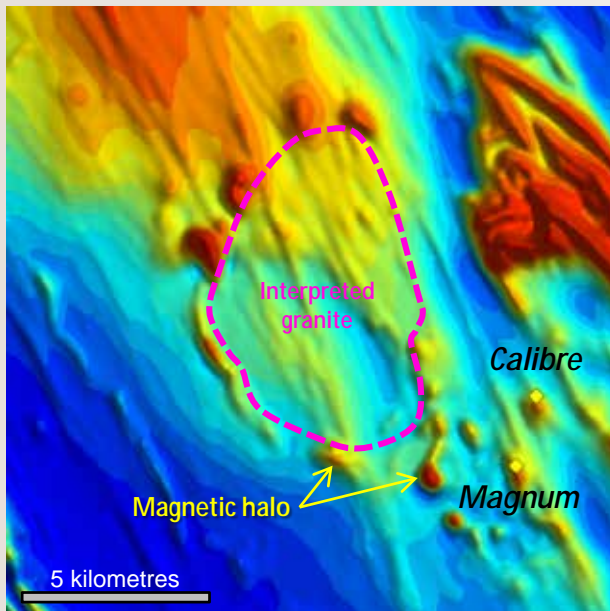
MULTIPLE DEPOSITS LARGE LAND POSITION

Deposits show similarities in signature detectable using magnetics and gravity

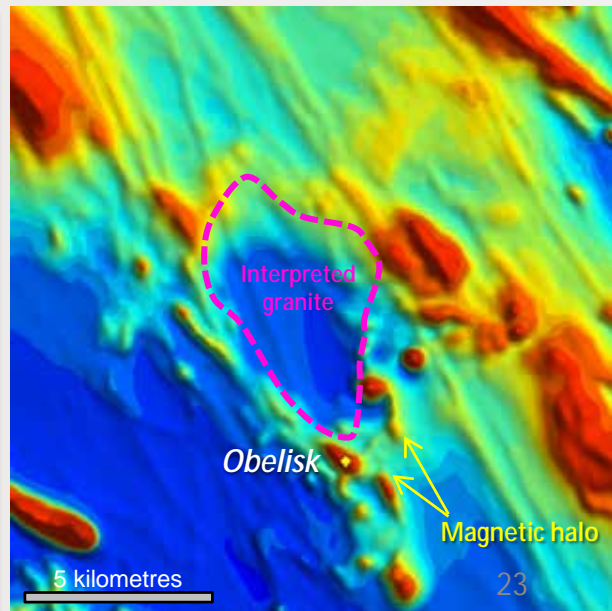
Newcrest Mining, Telfer Copper/Gold Mine
Resource: +25M oz Au, + 1Mt Cu



Antipa Minerals, Calibre & Magnum
1.2M oz Au, 139,000T Cu

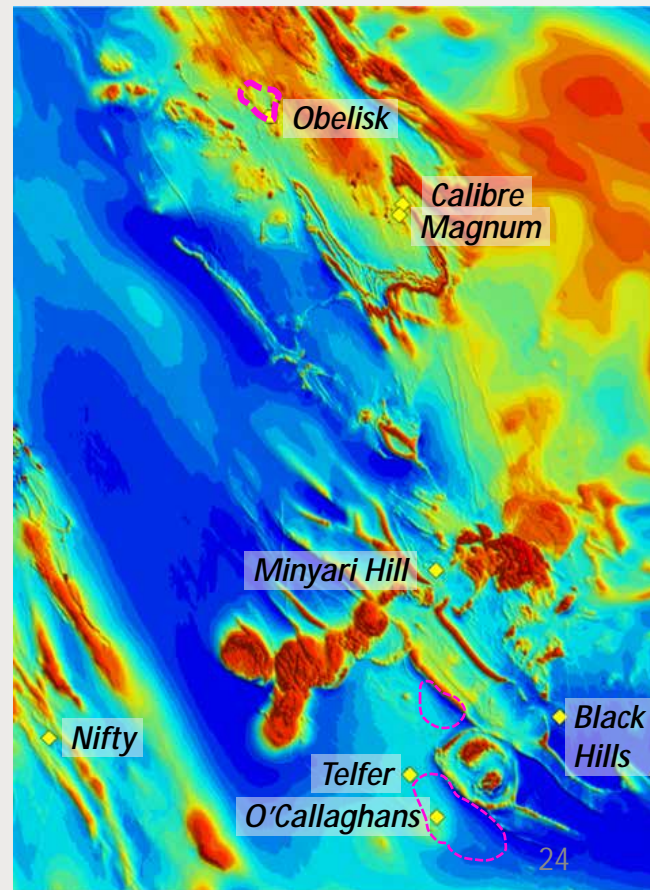


Sipa Resources, Obelisk Prospect



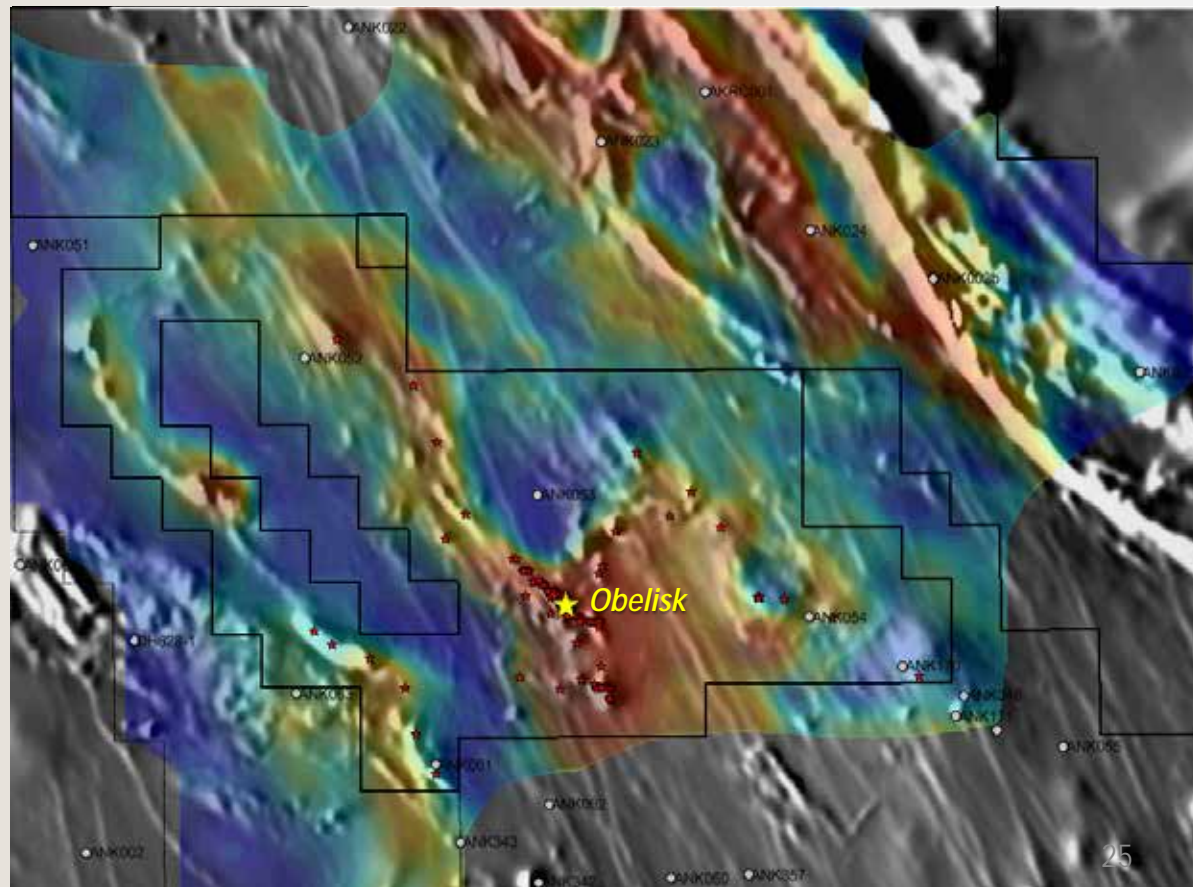
REGIONAL MAGNETICS

- Shows North West trending belt with multiple intrusions
- Deposits are structurally controlled
- Domes are important
- Spatial and genetic (causal) relationship to intrusions



PATERSON NORTH – GEOPHYSICS

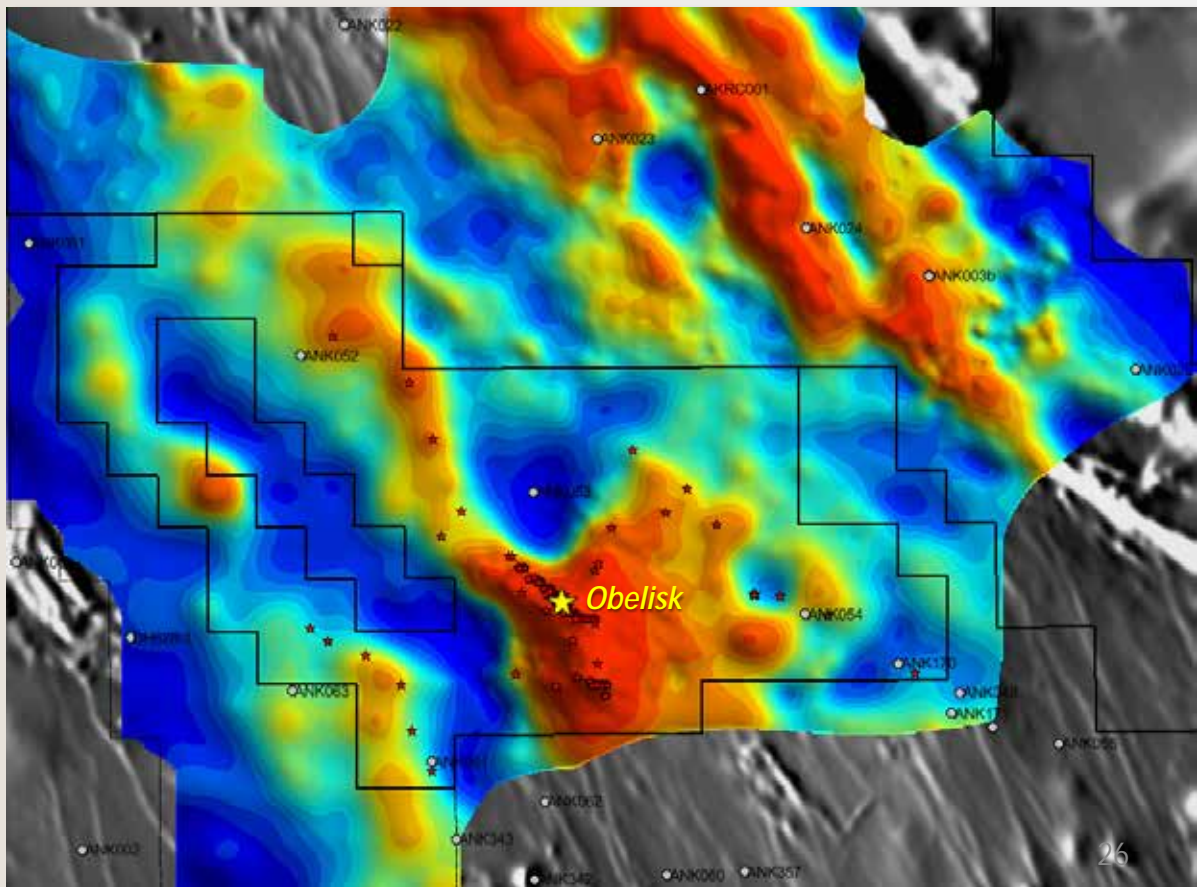
- Numerous newly identified intrusions
- Deposits structurally controlled and related to intrusions
- Domal feature highly significant





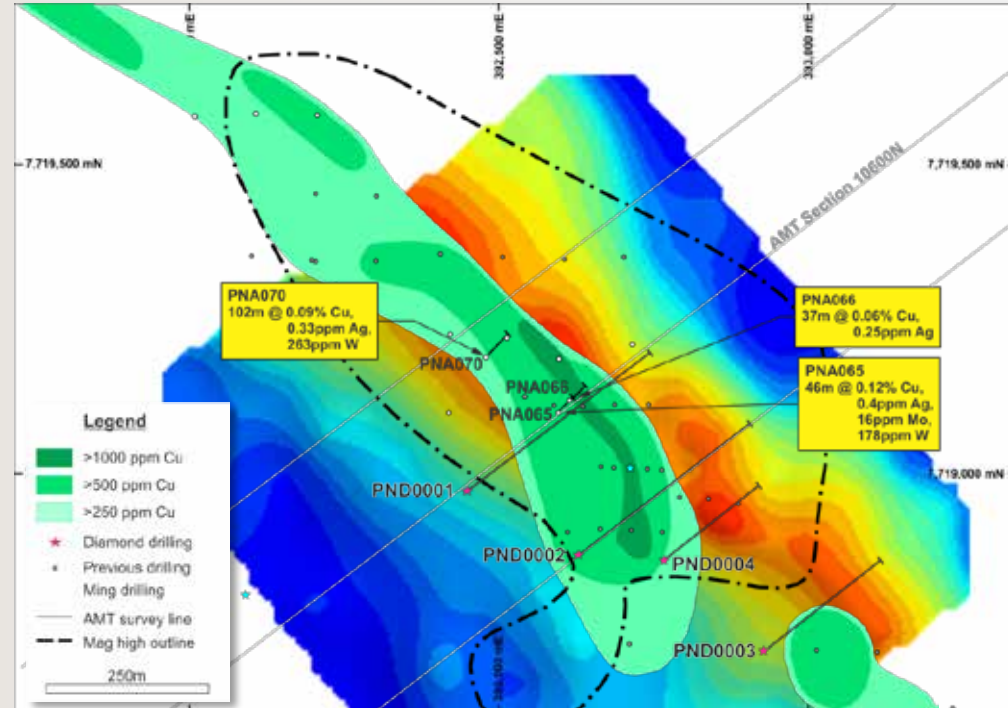
PATERSON NORTH – NEW GRAVITY

- New gravity dataset now comprises 5189 points
- Key to targeting under cover
- Also collected surface samples for ionic leach with assays awaited



OBELISK PROSPECT

- April 17, drilled broad copper plus (Au Ag Mo Bi W)
- July 17, IP indicates sulphides with copper
- Sep 17, 4 diamond holes with strong silicification, alteration, veining with high grade gold and copper identified



DRILLING RESULTS

Broad low grade copper

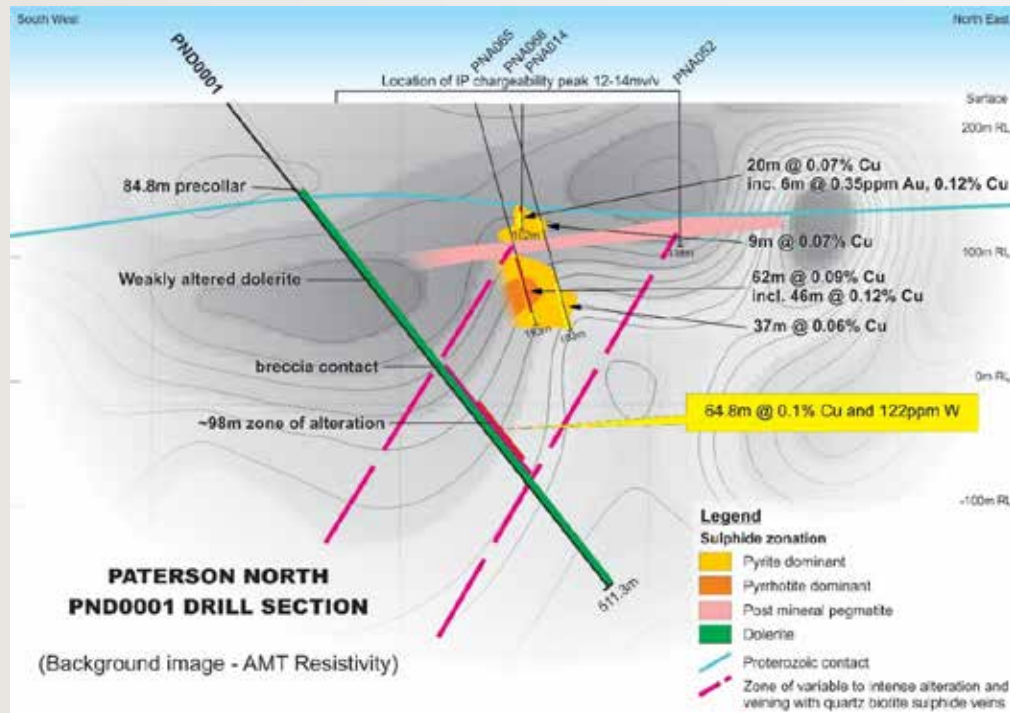
- PNA065 62m @ 0.09%
- PNA070 102m @ 0.09%
- PND001 64.8m @ 0.1%

High grade vein controlled gold and copper

- PND002 0.15m @ 22g/t and 2%

Supergene copper

- PND003 3m @ 1.8% Cu





KEY BREAKTHROUGHS 2017

- At Paterson North, drilled extensive silicification, alteration and veining with a large copper >1000ppm halo
- High grade gold and copper in veins now identified
- ***“Indications of a large gold and copper system nearby”***
- Increased landholding leads to province scale position with new gravity showing further prospective intrusions and structures (with evidence of domes)

KEY BREAKTHROUGHS 2017

- In Uganda, Akelikongo is now thought to be part of a large nickel sulphide province
- Akelikongo nickel give us massive leverage to the nickel price
- *“Both projects are positioned to attract the investment of a major mining company”*



28	29	79
Ni	Cu	Au
Nickel	Copper	Gold
58.693	63.546	196.97