



21 November 2017

Zoroastrian Deep Drilling Supports Underground Potential

Assay results received for the first three of five deep holes drilled at Zoroastrian demonstrate strong gold mineralisation in each hole.

Significant results include:

- 5m at 8.18g/t Au from 213m down hole, including 2m at 18.05g/t Au (KNC170037)
 - 12m at 5.57g/t Au from 235m down hole, including 5m at 9.04g/t Au (KNC170038)
 - 5m at 8.10g/t Au from 351m down hole, including 2 m at 18.03g/t Au (KNC170039)
-

Excelsior Gold Limited (ASX: EXG) (“the Company” or “Excelsior”) is pleased to provide the following drilling update for the Zoroastrian deposit (Figure 1) at the Company’s 100%-owned Kalgoorlie North Gold Project (“KGNP”), located 30 to 55km north of Kalgoorlie in Western Australia. The current fully-funded 33,000m drilling program continues to work towards upgrading as much of the KGNP’s 954,000-ounce gold resource base to reserve status, while continuing to explore the highly prospective project area for new discoveries.

Zoroastrian Resource Upgrade Drilling

Further to the recently announced 37% resource upgrade for Zoroastrian (Tables 1 and 2, *refer ASX announcement of 1 November 2017: Zoroastrian Mineral Resource Ounces Upgraded by 37%*), assay results from three of the five deeper holes have now been received.

The initial deep holes were designed to target the projected high-grade, down-plunge expression of the Zoroastrian deposit and have successfully intersected the predicted Blueys South Lode position with the grade tenor well above that of the resource model. These results have not only enhanced the underground potential of the Zoroastrian deposit, but have also intersected encouraging additional gold mineralisation associated with multiple parallel lodes.

Assay results are pending from the other 2 deep holes that were targeting extensions to the resource.

Excelsior Gold Limited

ABN 38 123 629 863

Address: Unit 2, 124 Stirling Highway, North Fremantle WA 6159 **Postal:** PO Box 520, North Fremantle WA 6159

Telephone: 08 9335 7770 **Facsimile:** 08 9335 6231

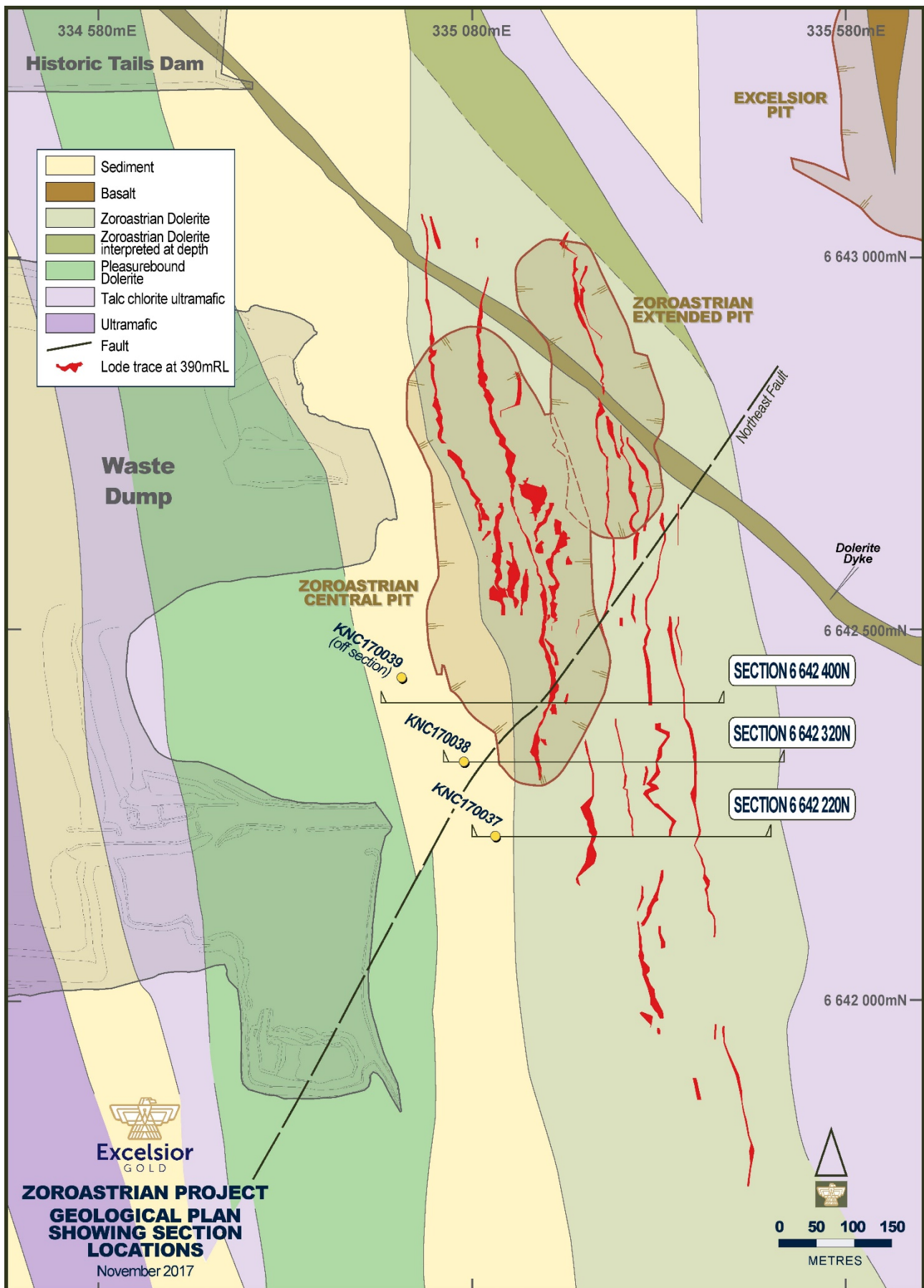


Figure 1: Plan of Zoroastrian deposit and drill collar locations

Hole KNC170037 was drilled to a down-hole depth of 342m and recorded a best intercept of **5m at 8.18g/t Au**, including **2m at 18.0g/t Au** from the Blueys South Lode at a depth of 159m below surface (Figure 2).

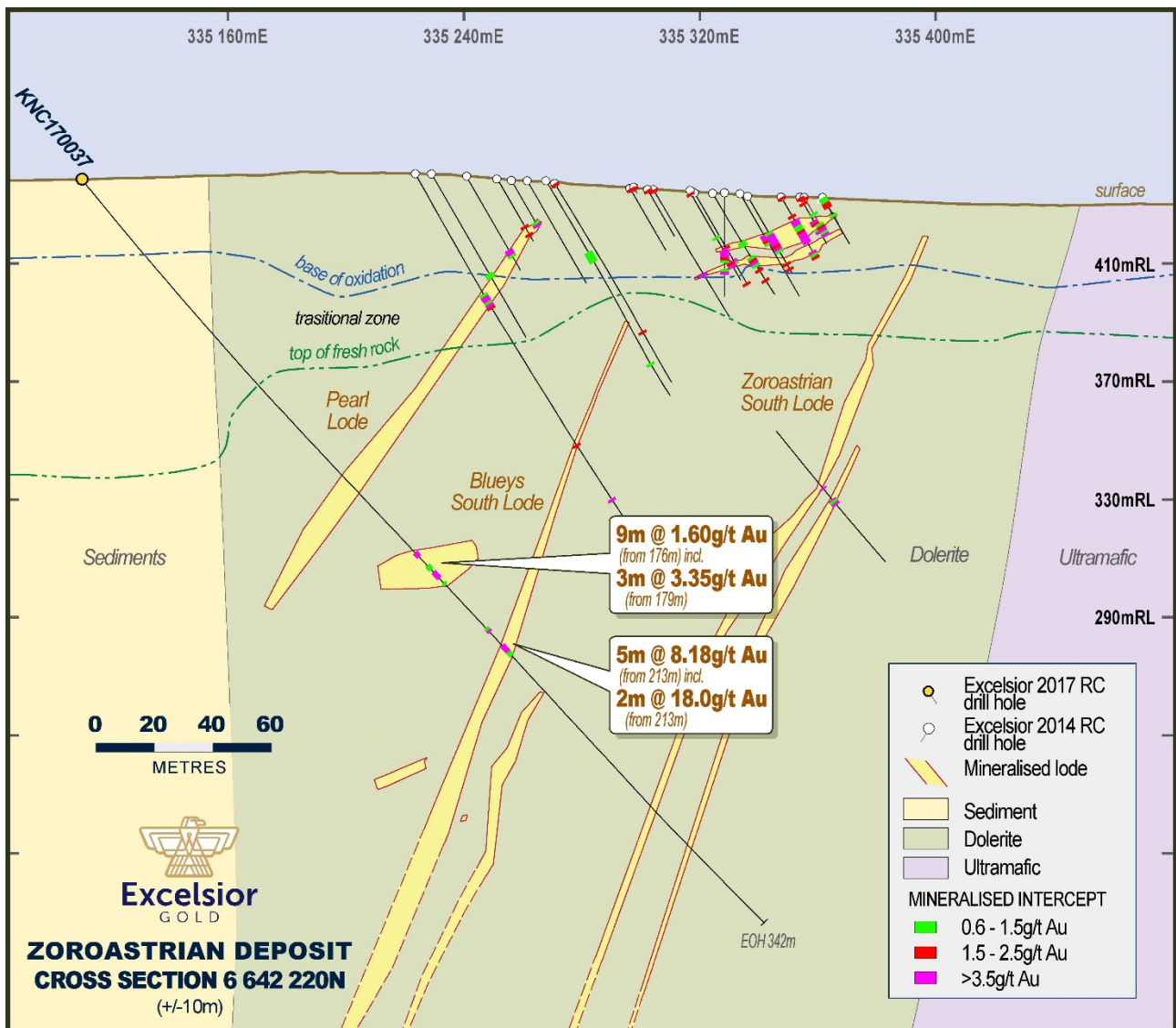


Figure 2: Cross section of KNC170037

Hole KNC170038 was drilled to a down-hole depth of 300m and recorded a best intercept of **12m at 5.57g/t Au**, including **5m at 9.04g/t Au** from the Blueys South Lode at a depth of 195m below surface (Figure 3).

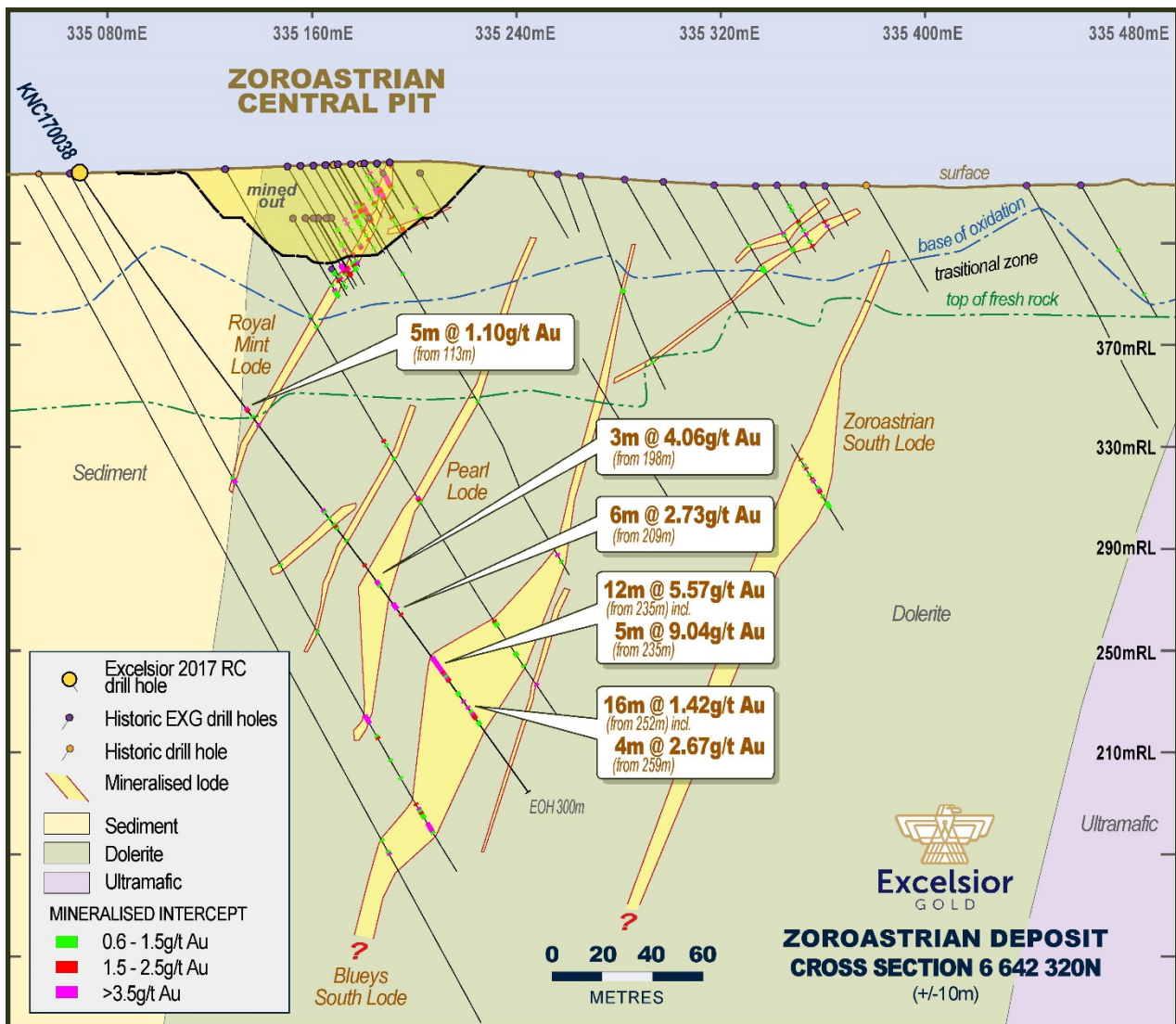


Figure 3: Cross section of KNC170038

Hole KNC170039 was drilled to a down-hole depth of 372m and recorded a best intercept of **5m at 8.10g/t Au**, including **2m at 18.0g/t Au** from the Blueys South Lode at a depth of 300m below surface (Figure 4).

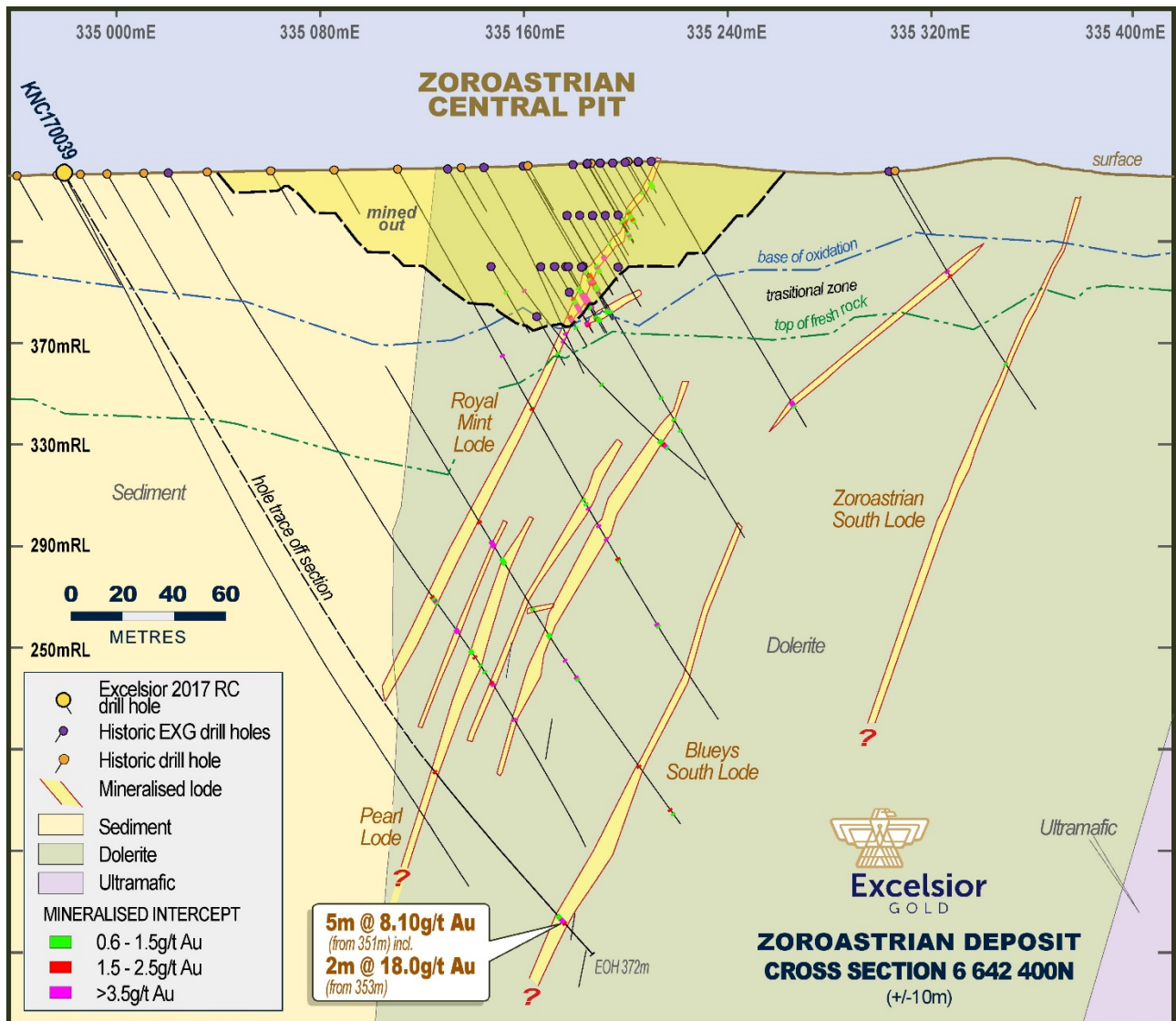


Figure 4: Cross section of KNC170039

Other significant intercepts recorded from the Pearl and Royal Mint Lodes are summarised in Table 4.

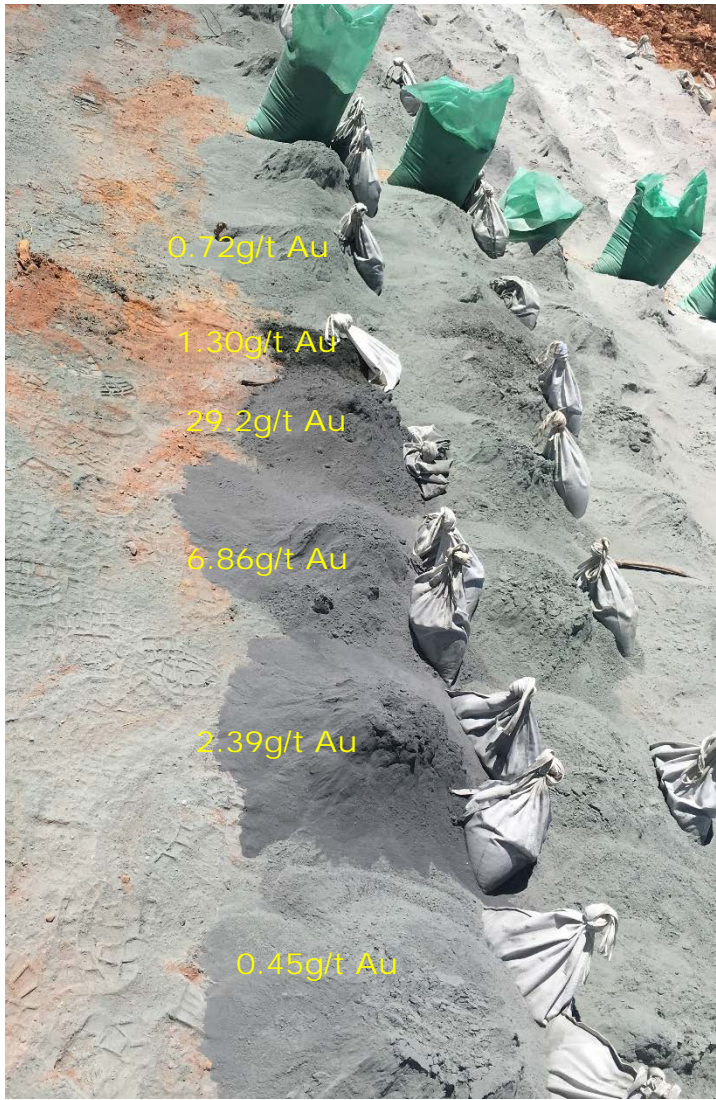


Figure 5: RC chips from hole KNC170039 in Blueys South Lode



Figure 6: Close up of washed RC chips grading 6.86g/t Au and up to 15% arsenopyrite from hole KNC170039. Metallurgy confirms gold recovery, via gravity and standard cyanide leach, of over 94% with gold in fractures within and on the edges of the arsenopyrite.

APPENDIX: Zoroastrian Mineral Resource Estimate (refer ASX announcement of 1 November 2017 for further information):

Table 1: Tonnes and grade above 290mRL (150m below surface)

LUC above 290mRL - 0.6g/t Cut-off grade

	Measured		Indicated		Inferred		Total		
Class	Tonnes	g/t	Tonnes	g/t	Tonnes	g/t	Tonnes	g/t	Ounces
Oxide	94,150	1.45	275,250	1.56	53,950	1.30	423,350	1.50	20,459
Transitional	61,000	1.87	533,688	1.93	155,813	1.64	750,500	1.87	45,052
Fresh	73,010	2.60	1,174,320	2.04	1,409,590	1.79	2,656,920	1.92	164,056
Total	228,000	1.93	1,983,000	1.94	1,619,000	1.76	3,831,000	1.86	229,600

Table 2: Zoroastrian Mineral Resource below 290mRL

LUC below 290mRL - 2.5g/t Cut-off grade

	Measured		Indicated		Inferred		Total		
Class	Tonnes	g/t	Tonnes	g/t	Tonnes	g/t	Tonnes	g/t	Ounces
Oxide									
Transitional									
Fresh			45,710	3.83	532,280	4.11	577,990	4.08	75,886
Total			45,700	3.83	532,300	4.11	578,000	4.08	75,900

The total Zoroastrian Mineral Resource is:

4.4 million tonnes @ 2.2g/t Au for 305koz Au

The total Excelsior Gold Mineral Resource is:

19 million tonnes @ 1.6g/t Au for 954koz Au

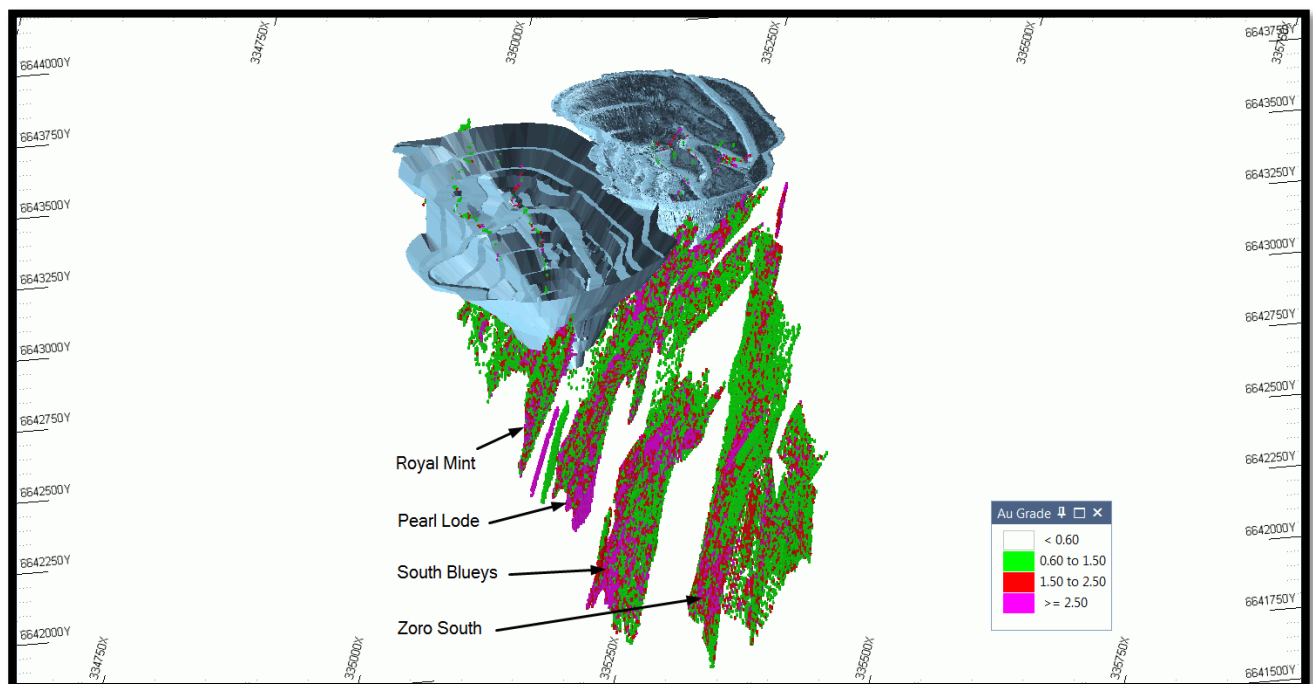


Figure 7: Zoroastrian MRE looking north, note multiple parallel lodes

Table 3: Kalgoorlie North Gold Project Mineral Resources Estimate

KALGOORLIE NORTH GOLD RESOURCES		MEASURED			INDICATED			INFERRED			TOTAL RESOURCES			Original ASX report date
Deposit	Cut-Off (g/t Au)	Tonnes (,000t)	Grade (g/t Au)	Ounces (,000oz)	Tonnes (,000t)	Grade (g/t Au)	Ounces (,000oz)	Tonnes (,000t)	Grade (g/t Au)	Ounces (,000oz)	Tonnes (,000t)	Grade (g/t Au)	Ounces (,000oz)	
Excelsior	0.6	5,175	1.4	232	3,230	1.2	125	2,652	1.2	99	11,057	1.3	456	12-Apr-12
Zoroastrian (O/P)	0.6	228	1.9	14	1,983	1.9	124	1,619	1.8	91	3,830	1.9	230	1-Nov-17
Zoroastrian (U/G)	2.5				46	3.8	6	532	4.1	70	578	4.1	76	1-Nov-17
Zoroastrian (Total)		228.0	1.9	14	2,029	2.0	130	2,151	2.3	162	4,408	2.2	305	
Lochinvar	0.6				448	1.7	25	60	1.7	3	508	1.7	28	19-Feb-14
Nerrin Nerrin	0.6				74	2.4	6	107	2.4	8	181	2.4	14	15-Nov-13
Ophir	0.6							75	1.9	5	75	1.9	5	11-Dec-13
Vettersburg South	0.6							552	1.5	26	552	1.5	26	11-Dec-13
Total Satellite Resources					522	1.8	31	793	1.6	42	1,315	1.7	73	
Other Resources (greater than 5km from Excelsior)														
Eldorado	0.6				362	1.6	19	31	1.4	1	393	1.6	20	11-Sep-13
Talbot North *	0.6							662	1.7	36	662	1.7	36	31-Mar-10
Bulletin South	0.6	38	1.9	2	482	2.3	35	125	2.4	10	645	2.3	47	23-Jan-17
Windanya	0.6							360	1.5	17	360	1.5	17	11-Dec-13
Total Other Resources		38.2	1.9	2.3	844	2.0	54	1,178	1.7	64	2,061	1.8	120	
TOTAL RESOURCES		5,440	1.4	249	6,620	1.6	339	6,770	1.7	370	18,800	1.6	954	

* This information was prepared and first disclosed under the JORC Code 2004. It has not been updated since to comply with the JORC Code 2012 on the basis that the information has not materially changed since it was last reported.

** Differences may occur due to rounding.

*** The Bulletin South Open Pit resources are reported within a A\$2,750 per ounce gold price pit shell. Other resources are reported above applicable depths below surface.

Qualifying Statement

This report may include forward-looking statements. These forward-looking statements are based on a number of assumptions made by the Company and its consultants in light of experience, current conditions and expectations concerning future events which the Company believes are appropriate in the present circumstances. Forward-looking statements are necessarily subject to risks, uncertainties and other factors, many of which are outside the control of Excelsior Gold, which could cause actual results to differ materially from such statements. The Company makes no undertaking to subsequently update or revise the forward-looking statements made in this release to reflect the circumstances or events after the date of this release.

Competent Person Statement – Exploration Results

Information in this announcement that relates to exploration results is based on information compiled by Mr. Bradley Toms who is the Exploration Manager of Excelsior Gold Limited. Mr. Toms is a Member of The Australian Institute of Geoscientists and has sufficient experience which is relevant to the style of mineralisation and type of deposit under consideration and to the activity that he is undertaking, to qualify as Competent Person as defined in the 2012 Edition of the “Australasian Code for Reporting of Exploration Results, Mineral Resources and Ore Reserves”. Mr. Toms consents to the inclusion in the document of the information in the form and context in which it appears.

Competent Person Statement – Mineral Resources

Information in this announcement that relates to the Zoroastrian Mineral Resource results is based on information compiled by Mr. Ross Whittle-Herbert who is a full-time employee of Excelsior Gold Limited. Mr. Whittle-Herbert is a Member of The Australian Institute of Geoscientists and has sufficient experience which is relevant to the style of mineralisation and type of deposit under consideration and to the activity that he is undertaking, to qualify as Competent Person as defined in the 2012 Edition of the “Australasian Code for Reporting of Exploration Results, Mineral Resources and Ore Reserves”. Mr. Adams consents to the inclusion in the document of the information in the form and context in which it appears.

Information in this announcement that relates to the Bulletin South Mineral Resource results is based on information compiled by Mr. Patrick Adams who is a Director of Cube Consulting Pty Ltd. Mr. Adams is a Fellow of the AusIMM (CP) and a Member of The Australian Institute of Geoscientists and has sufficient experience which is relevant to the style of mineralisation and type of deposit under consideration and to the activity that he is undertaking, to qualify as Competent Person as defined in the 2012 Edition of the “Australasian Code for Reporting of Exploration Results, Mineral Resources and Ore Reserves”. Mr. Adams consents to the inclusion in the document of the information in the form and context in which it appears.

Information in this announcement that relates to other Mineral Resource results is based on information compiled by Mr Bradley Toms who is a full-time employee of Excelsior Gold Limited. Mr Toms is a Member of the Australian Institute of Geoscientists and has sufficient experience which is relevant to the style of mineralisation and type of deposit under consideration and to the activity which he is undertaking to qualify as a Competent Person as defined in the 2012 Edition of the “Australasian Code for Reporting of Exploration Results, Mineral Resources and Ore Reserves” for the Group reporting. Mr Toms consents to the inclusion in this announcement of the matters based on this information in the form and context in which it appears.



Table 4: Significant gold assay results

HOLE NUMBER	EAST (MGA94Z51)	NORTH (MGA94Z51)	AHD RL (m)	FINAL DEPTH (m)	COLLAR DIP	COLLAR AZIM (magnetic)	FROM (m)	TO (m)	LENGTH (m)	GRADE g/t Au	Lode	Metres below original ground surface
Zoroastrian Deposit												
KNC170037	335110	6642219	425	342	-50	91	170	172	2	6.20	Pearl Flat hanging wall	127
"							176	185	9	1.60	Pearl Flat foot wall	137
"						including	179	182	3	3.35		
"							205	207	2	1.87	Blueys South hanging wall	154
"							213	218	5	8.18	Blueys South foot wall	159
"						including	213	215	2	18.05		
"							242	244	2	3.74	Un-named	180
"							288	290	2	1.7	Zoroastrian South hanging wall	215
"							300	301	1	0.73	Zoroastrian South foot wall	223
KNC170038	335068	6642319	425	300	-56	91	113	118	5	1.10	Royal Mint hanging wall	99
"							121	122	1	6.69	Royal Mint foot wall	104
"							163	173	10	1.66	Pearl Flat	137
"							178	179	1	0.69	Pearl 2	145
"							190	191	1	1.57	Un-named	154
"							198	201	3	4.06	Pearl hanging wall	161
"							209	215	6	2.73	Pearl foot wall	170
"						including	209	212	3	4.87		
"							235	247	12	5.57	Blueys South	195
"						including	235	240	5	9.04		
"							252	268	16	1.42	Blueys South	211
"						including	259	263	4	2.67		
KNC170039	334982	6642435		372	-60	99	276	277	1	1.59	Pearl	238
"							351	356	5	8.10	Blueys South	300
"						including	353	355	2	18.03		

Intersection for drilling is Au \geq 0.60g/t Au, minimum 2m internal dilution, minimum 1m downhole reported.

Intersections \geq 10 gram-metres are in **bold**.

Excelsior Gold Limited

ABN 38 123 629 863

Address: Unit 2, 124 Stirling Highway, North Fremantle WA 6159 Postal: PO Box 520, North Fremantle WA 6159

Telephone: 08 9335 7770 Facsimile: 08 9335 6231

1. JORC CODE, 2012 EDITION – TABLE 1 - ZOROASTRIAN

1.1 Section 1 Sampling Techniques and Data

Criteria	JORC Code explanation	Commentary
Sampling techniques	<ul style="list-style-type: none"> Nature and quality of sampling (e.g. cut channels, random chips, or specific specialised industry standard measurement tools appropriate to the minerals under investigation, such as down hole gamma sondes, or handheld XRF instruments, etc). These examples should not be taken as limiting the broad meaning of sampling. Include reference to measures taken to ensure sample representivity and the appropriate calibration of any measurement tools or systems used. Aspects of the determination of mineralisation that are Material to the Public Report. In cases where 'industry standard' work has been done this would be relatively simple (e.g. 'reverse circulation drilling was used to obtain 1 m samples from which 3 kg was pulverised to produce a 30 g charge for fire assay'). In other cases more explanation may be required, such as where there is coarse gold that has inherent sampling problems. Unusual commodities or mineralisation types (e.g. submarine nodules) may warrant disclosure of detailed information. 	<ul style="list-style-type: none"> The mineralization was primarily sampled by Reverse Circulation (RC) and Diamond Core (DC) drilling on nominal 40m x 20m (N x E) grid spacing. The holes were generally drilled towards grid east at varying angles to optimally intersect the mineralized zones. The drilling database consists of historic (pre 2009) and EXG drilling data. The historic data consists of 19 DD and 420 RC holes; EXG drilling consists of 12 DD, 22 Reverse Circulation with diamond tail (RCD), 579 RC and 1800 Reverse Circulation grade control (RCGC) holes. Complete details are un-available for historic drilling. Generally, EXG RC recovered chip samples were collected and passed through a cone splitter. Limited numbers of field duplicates and screen fire assays have been undertaken to support sample representivity. EXG DD core has been sampled by submission of cut half core. All EXG RC drilling was sampled on one metre down hole intervals. The recovered samples were passed through a cone splitter and a nominal 2.5kg – 3.5kg sample was taken to a Kalgoorlie contract laboratory. Samples were oven dried, reduced by riffle splitting to 3kg as required and pulverized in a single stage process to 85% passing 75 µm. The sample is then prepared by standard fire assay techniques with a 40g charge. Approximately 200g of pulp material is returned to EXG for storage and potential assay at a later date. The EXG DC samples are collected at nominated intervals by EXG staff from core that has been cut in half and transported to a Kalgoorlie based laboratory. Samples were oven dried, crushed to a nominal 10mm by a jaw crusher, reduced by riffle splitting to 3kg as required and pulverized in a single stage process to 85% passing 75 µm. The sample is then prepared by standard fire assay techniques with a 40g charge. Approximately 200g of pulp material is returned to EXG for storage and potential assay at a later date. Due to the presence of coarse gold and arsenopyrite some 150 samples were subjected to a 400g LeachWell® technique with a standard fire assay on the tail. This demonstrated that some of the gold is nuggetty in nature and that normal fire assay techniques may underestimate the grade. It also demonstrated that the mineralisation is non-refractory in nature.
Drilling techniques	<ul style="list-style-type: none"> Drill type (e.g. core, reverse circulation, open-hole hammer, rotary air blast, auger, Bangka, sonic, etc) and details (e.g. core diameter, triple or standard tube, depth of diamond tails, face-sampling bit or other type, whether core is oriented and if so, by what method, etc). 	<ul style="list-style-type: none"> Prior to 2009 19 DC and 420 RC holes were drilled by previous owners over the area. These holes are without documentation of the rig type and capability, core size, sample selection and handling. For (post 2009) EXG drilling, the RC drilling system employed the use of a face sampling hammer and a nominal 146mm diameter drill bit. The DC drilling is NQ2 size core (nominal 50.6mm core diameter) or HQ (nominal 63.5mm core diameter). All EXG drill core is orientated by the drilling contractor with a down the hole Ace system. Core diameter is noted in the assay results table for DC assay results.
Drill sample recovery	<ul style="list-style-type: none"> Method of recording and assessing core and chip sample recoveries and results assessed Measures taken to maximise sample recovery and ensure representative nature of the samples Whether a relationship exists between sample recovery and grade and whether sample bias may have occurred due to preferential loss/gain of fine/coarse material. 	<ul style="list-style-type: none"> All EXG RC 1m samples are logged for drilling recovery by a visual estimate and this information is recorded and stored in the drilling database. At least every 10th metre is collected in a plastic bag and these are weighed when they are utilized for the collection of field duplicate samples. All samples received by the laboratory are weighed with the data collected and stored in the database. The EXG DC samples are orientated, length measured and compared to core blocks placed in the tray by the drillers, any core loss or other variance from that expected from the core blocks is logged and recorded in the database. Sample loss or gain is reviewed on an ongoing basis and feedback given to the drillers to enable the best representative sample to always be obtained. EXG RC samples are visually logged for moisture content, sample recovery and contamination. This information is stored in the database. The RC drill

		<p>system utilizes a face sampling hammer which is industry best practice and the contractor aims to maximize recovery at all times. RC holes are drilled dry whenever practicable to maximize recovery of sample.</p> <ul style="list-style-type: none"> The DC drillers use a core barrel and wire line unit to recover the core, they aim to recover all core at all times and adjust their drilling methods and rates to minimise core loss, i.e. different techniques for broken ground to ensure as little core as possible is washed away with drill cuttings. Study of sample recovery vs gold grade does not show any bias towards differing sample recoveries or gold grade. The drilling contractor uses standard industry drilling techniques to ensure minimal loss of any size fraction.
Logging	<ul style="list-style-type: none"> Whether core and chip samples have been geologically and geotechnically logged to a level of detail to support appropriate Mineral Resource estimation, mining studies and metallurgical studies. Whether logging is qualitative or quantitative in nature. Core (or costean, channel, etc) photography. The total length and percentage of the relevant intersections logged. 	<ul style="list-style-type: none"> All EXG RC samples are geologically logged directly into hand-held Geobank devices. All EXG DC is logged for core loss, marked into metre intervals, orientated, structurally logged, geotechnically logged and logged with a hand lens with the following parameters recorded where observed: weathering, regolith, rock type, alteration, mineralization, shearing/foliation and any other features that are present All EXG DC is photographed both wet and dry after logging but before cutting. The entire lengths of EXG RC holes are logged on a 1m interval basis, i.e. 100% of the drilling is logged, and where no sample is returned due to voids (or potentially lost sample) it is logged and recorded as such. Drill core is logged over its entire length and any core loss or voids intersected are recorded.
Sub-sampling techniques and sample preparation	<ul style="list-style-type: none"> If core, whether cut or sawn and whether quarter, half or all core taken. If non-core, whether riffled, tube sampled, rotary split, etc and whether sampled wet or dry. For all sample types, the nature, quality and appropriateness of the sample preparation technique. Quality control procedures adopted for all sub-sampling stages to maximise representivity of samples. Measures taken to ensure that the sampling is representative of the in situ material collected, including for instance results for field duplicate/second-half sampling. Whether sample sizes are appropriate to the grain size of the material being sampled. 	<ul style="list-style-type: none"> EXG Exploration results reported for drill core are half core taken from the right hand side of the core looking down hole. Core is cut with an on-site diamond core saw. All EXG RC samples are put through a cone splitter and the sample is collected in a unique pre-numbered calico sample bag. The moisture content of each sample is recorded in the database. The EXG RC samples are sorted, oven dried, the entire sample is pulverized in a one stage process to 85% passing 75 µm. The bulk pulverized sample is then bagged and approximately 200g extracted by spatula to a numbered paper bag that is used for the 50g fire assay charge. The EXG DC samples are oven dried, jaw crushed to nominal <10mm, 3.5kg is obtained by riffle splitting and the remainder of the coarse reject is bagged while the 3.5kg is pulverized in a one stage process to 85% passing 75 µm. The bulk pulverized sample is then bagged and approximately 200g extracted by spatula to a numbered paper bag that is used for the 40g fire assay charge. EXG RC and DC samples submitted to the laboratory are sorted and reconciled against the submission documents. EXG inserts blanks and standards with blanks submitted in sample number sequence at 1 in 50 and standards submitted in sample number sequence at 1 in 20. The laboratory uses their own internal standards of 2 duplicates, 2 replicates, 2 standards, and 1 blank per 50 fire assays. The laboratory also uses barren flushes on the pulveriser. In the field every 10th metre from the bulk sample port on the cone splitter is bagged and placed in order on the ground with other samples. This sample is then used for collection of field duplicates via riffle splitting. RC field duplicate samples are collected after results are received from the original sample assay. Generally, field duplicates are only collected where the original assay result is equal to or greater than 0.1g/t Au. The field duplicates are submitted to the laboratory for the standard assay process. The laboratory is blind to the original sample number. For DC, no core duplicates (i.e. half core) have been collected or submitted. The sample sizes are considered to be appropriate for the type, style, thickness and consistency of mineralization located at this project. The sample size is also appropriate for the sampling methodology employed and the gold grade ranges returned.
Quality of assay data and laboratory tests	<ul style="list-style-type: none"> The nature, quality and appropriateness of the assaying and laboratory procedures used and whether the technique is considered partial or total. For geophysical tools, spectrometers, handheld XRF instruments, etc, the parameters used in determining the analysis including instrument make and model, reading times, calibrations factors applied and their derivation, etc. Nature of quality control procedures adopted (e.g. standards, blanks, duplicates, external laboratory checks) and whether acceptable levels of accuracy (i.e. lack of bias) and precision have been established. 	<ul style="list-style-type: none"> EXG has routinely used local Kalgoorlie Certified Laboratories for all sample preparation and analysis. The most commonly used laboratories have been SGS Australia and Bureau Veritas Australia which has two facilities in Kalgoorlie. No complete details of the sample preparation, analysis or security are available for either the historic AC, DD or RC drilling results in the database. The assay method is designed to measure total gold in the sample. The laboratory procedures are appropriate for the testing of gold at this project given its mineralization style. The technique involves using a 40g sample charge with a lead flux which is decomposed in a furnace with the prill being totally digested by 2 acids (HCl and HNO₃) before measurement of the gold content by an AA machine. The QC procedures are industry best practice. The laboratory is accredited and uses its own certified reference material. The laboratory has 2 duplicates, 2 replicates, 1 standard and 1 blank per 50 fire assays.

		<ul style="list-style-type: none"> EXG submits blanks at the rate of 1 in 50 samples and certified reference material standards at the rate of 1 in 20 samples in the normal run of sample submission numbers. As part of normal procedures EXG examines all standards and blanks to ensure that they are within tolerances. Additionally, sample size, grind size and field duplicates are examined to ensure no bias to gold grade exists.
Verification of sampling and assaying	<ul style="list-style-type: none"> The verification of significant intersections by either independent or alternative company personnel. The use of twinned holes. Documentation of primary data, data entry procedures, data verification, data storage (physical and electronic) protocols. Discuss any adjustment to assay data. 	<ul style="list-style-type: none"> Consultant geologist, Rick Adams from Cube Consulting, John Harris of Geological Services and independent geologist Matt Ridgway, have inspected drill core and RC chips in the field to verify the correlation of mineralized zones between assay results and lithology/alteration/mineralization. Recent drilling has been inspected by EXG site geologists. A number of diamond core holes were drilled throughout the deposit to twin RC holes. These twinned holes returned results comparable to the original holes and were also used to collect geological information and material for metallurgical assessment. A number of RC holes have also been drilled that confirmed results obtained from historical drillholes. Primary data is sent digitally every 2-3 days from the field to EXG's Database Administrator (DBA). The DBA imports the data into the commercially available and industry accepted DataShed database software. Assay results are merged when received electronically from the laboratory. The responsible geologist reviews the data in the database to ensure that it is correct and has merged properly and that all data has been received and entered. Any variations that are required are recorded permanently in the database. No adjustments or calibrations were made to any assay data used in this report.
Location of data points	<ul style="list-style-type: none"> Accuracy and quality of surveys used to locate drill holes (collar and down-hole surveys), trenches, mine workings and other locations used in Mineral Resource estimation Specification of the grid system used Quality and adequacy of topographic control. 	<ul style="list-style-type: none"> All drill holes have their collar location recorded from a hand held GPS unit. Subsequent to drilling holes were picked up using RTKGPS by the mine surveyor or by contracted surveyors. Downhole surveys are completed every 30m downhole. No detailed down hole surveying information is available for the historic RC or DD drilling. EXG routinely contracted down hole surveys during the programmes of exploration drilling for each RC and DC drill hole completed using either digital electronic multi-shot tool or north seeking gyro, both of which are maintained by Contractors to manufacturer specifications. All drill holes and resource estimation use the MGA94, Zone 51 grid system. The topographic data used was obtained from consultant surveyors and is based on a LiDAR survey flown in 2012. It is adequate for the reporting of Exploration Results and subsequent Mineral Resource Estimates.
Data spacing and distribution	<ul style="list-style-type: none"> Data spacing for reporting of Exploration Results. Whether the data spacing and distribution is sufficient to establish the degree of geological and grade continuity appropriate for the Mineral Resource and Ore Reserve estimation procedure(s) and classifications applied. Whether sample compositing has been applied. 	<ul style="list-style-type: none"> The nominal exploration drill spacing is 40m x 40m with many E-W cross-sections in-filled to 20m across strike. This has been infilled with variable spacing for Resource estimate purposes to 20 x 20m and with Grade control to 7.5 x 5m (N x E) spacing. This report is for the reporting of recent explorations drilling. The drill spacing, spatial distribution and quality of assay results is sufficient to support the JORC classification of material reported previously and is appropriate for the nature and style of mineralisation being reported. The majority of holes were sampled at 1m, but when this isn't the case, sample compositing to 4m has been applied.
Orientation of data in relation to geological structure	<ul style="list-style-type: none"> Whether the orientation of sampling achieves unbiased sampling of possible structures and the extent to which this is known, considering the deposit type. If the relationship between the drilling orientation and the orientation of key mineralised structures is considered to have introduced a sampling bias, this should be assessed and reported if material. 	<ul style="list-style-type: none"> The majority of drilling is to grid east. The bulk of the mineralized zones are perpendicular to the drilling direction. Structural logging of orientated drill core supports the drilling direction and sampling method. No drilling orientation and sampling bias has been recognized at this time.
Sample security	<ul style="list-style-type: none"> The measures taken to ensure sample security. 	<ul style="list-style-type: none"> RC samples are delivered directly from the field to the Kalgoorlie laboratory by EXG personnel on a daily basis with no detours, the laboratory then checks the physically received samples against an EXG generated sample submission list and reports back any discrepancies Drill core is transported daily directly from the drill site to EXG's secure core processing facility by EXG personnel with no detours. The core is then placed on racks within a secure shed and processed until it requires cutting. Core is then transported directly by EXG's staff to the Kalgoorlie laboratory where it is cut in half by laboratory staff and then sampled by EXG staff. The core is then prepared for assay in Kalgoorlie to the pulverizing stage whereupon the laboratory transports it using a contractor directly to their Perth based assay facility.

Audits or reviews	<ul style="list-style-type: none"> The results of any audits or reviews of sampling techniques and data. 	<ul style="list-style-type: none"> An internal review of sampling techniques and procedures was completed in March 2013. No external or third party audits or reviews have been completed.
--------------------------	---	---

1.2 Section 2 Reporting of Exploration Results (Zoroastrian)

(Criteria listed in the preceding section also apply to this section.)

Criteria	JORC Code explanation	Commentary			
Mineral tenement and land tenure status	<ul style="list-style-type: none">Type, reference name/number, location and ownership including agreements or material issues with third parties such as joint ventures, partnerships, overriding royalties, native title interests, historical sites, wilderness or national park and environmental settings.The security of the tenure held at the time of reporting along with any known impediments to obtaining a licence to operate in the area.	<ul style="list-style-type: none">The results reported in this Announcement are on granted Mining tenements held by GPM Resources Pty Ltd, a wholly owned subsidiary of Excelsior Gold Limited.			
		Tenement	Holder	Area (Ha)	Expiry Date
		M24/11	GPM Resources	1.80	23/03/2025
		M24/43	GPM Resources	9.28	15/10/2026
		M24/99	GPM Resources	190.75	02/12/2028
		M24/121	GPM Resources	36.95	02/11/2029
		M24/135	GPM Resources	17.75	10/06/2029
		M24/869	GPM Resources	7.16	21/10/2024
		M24/870	GPM Resources	7.04	21/10/2024
		M24/871	GPM Resources	9.72	21/10/2024
		M24/951	GPM Resources	190.03	16/04/2036
	<ul style="list-style-type: none">At this time the tenements are in good standing. There are no existing royalties, duties or other fees impacting on the EXG Kalgoorlie North Project.				
Exploration done by other parties	<ul style="list-style-type: none">Acknowledgment and appraisal of exploration by other parties.	<ul style="list-style-type: none">Exploration by other parties has been reviewed and is used as a guide to EXG’s exploration activities. This includes work by AMAX, Hill Minerals, Aberfoyle and Halycon Group. Previous parties have completed both open pit and underground mining, geophysical data collection and interpretation, soil sampling and drilling.			
Geology	<ul style="list-style-type: none">Deposit type, geological setting and style of mineralisation.	<ul style="list-style-type: none">The deposit occurs on the eastern limb of a narrow NNW trending structure, the Bardoc-Broad Arrow syncline within the Bardoc Tectonic Zone. In this zone the sequence comprises highly deformed fault slice lenses of intercalated Archaean mafic and ultramafic volcanics and metasediments.The mineralisation in the Zoroastrian area is predominately associated with a complex array of multiple dimensional and variable orientated quartz veins and stock works within the differentiated Zoroastrian Dolerite. In places a surficial 1-2m thick calcrete/lateritic gold bearing horizon and small near surface supergene pods exist.The Zoroastrian dolerite is thought to be the stratigraphic equivalent of the Paddington dolerite which hosted the 1m+oz mine at Paddington itself with both deposits bounded to the west by the Black Flag sediments and to the east by the Mount Corlac ultramafics. Shear zones up to 10m wide containing gold bearing laminated quartz veining (5cm to 1m wide) occur on both contacts.At Zoroastrian slivers of the intruded sequence occur apparently internal to the dolerite throughout the area suggesting a more complex thrust/folding structural system than is readily apparent. Geological and structural interpretation at Zoroastrian is further complicated by contradicting and conflicting mapping and logging of the different units particularly between basalt and dolerite			
Drill hole Information	<ul style="list-style-type: none">A summary of all information material to the understanding of the exploration results including a tabulation of the following information for all Material drill holes:<ul style="list-style-type: none">easting and northing of the drill hole collarelevation or RL (Reduced Level – elevation above sea level in metres) of the drill hole collardip and azimuth of the holedown hole length and interception depthhole length.If the exclusion of this information is justified on the basis that the information is not Material and this exclusion does not detract from the understanding of the report, the Competent Person should clearly explain why this is the case.	<ul style="list-style-type: none">See Table 4 of this announcement.No results from previous un-reported exploration are the subject of this announcement.Dip is the inclination of the hole from the horizontal (i.e. a vertically down drilled hole from the surface is -90°). Azimuth is reported in magnetic degrees as the direction toward which the hole is drilled. MGA94 and magnetic degrees vary by approximately 1° in this project areaDown hole length of the hole is the distance from the surface to the end of the hole, as measured along the drill trace. Interception depth is the distance down the hole as measured along the drill trace. Intersection width is the downhole distance of an intersection as measured along the drill trace.Hole length is the distance from the surface to the end of the hole, as measured along the drill trace.			
Data aggregation methods	<ul style="list-style-type: none">In reporting Exploration Results, weighting averaging techniques, maximum and/or minimum grade truncations (e.a. cutting of	<ul style="list-style-type: none">No high grade cuts have been applied to assay results. RC assay results are distance weighted using 1m for each assay.			

	<p><i>high grades) and cut-off grades are usually Material and should be stated.</i></p> <ul style="list-style-type: none"> • <i>Where aggregate intercepts incorporate short lengths of high grade results and longer lengths of low grade results, the procedure used for such aggregation should be stated and some typical examples of such aggregations should be shown in detail.</i> • <i>The assumptions used for any reporting of metal equivalent values should be clearly stated.</i> 	<ul style="list-style-type: none"> • Intersections are reported if the interval is at least 1m wide at 0.6g/t Au grade. Intersections greater than 1m in downhole distance can contain up to 2m of low grade or barren material. • No metal equivalent reporting is used or applied.
Relationship between mineralisation widths and intercept lengths	<ul style="list-style-type: none"> • <i>These relationships are particularly important in the reporting of Exploration Results.</i> • <i>If the geometry of the mineralisation with respect to the drill hole angle is known, its nature should be reported.</i> • <i>If it is not known and only the down hole lengths are reported, there should be a clear statement to this effect (e.g. 'down hole length, true width not known').</i> 	<ul style="list-style-type: none"> • The intersection width is measured down the hole trace, it is not usually the true width. Cross sections in this announcement allows the relationship between true and down hole width to be viewed. • Data collected historical workings and shafts exist within the area and structural measurements from orientated diamond core drilling show the primary ore zones to be sub-vertical in nature with a general northerly strike. • All drill results within this announcement are downhole intervals only and due to variable mineralisation and style true widths are not able to be calculated until modelling of the mineralisation.
Diagrams	<ul style="list-style-type: none"> • <i>Appropriate maps and sections (with scales) and tabulations of intercepts should be included for any significant discovery being reported These should include, but not be limited to a plan view of drill hole collar locations and appropriate sectional views.</i> 	<ul style="list-style-type: none"> • Plan and cross sectional views are contained within this announcement.
Balanced reporting	<ul style="list-style-type: none"> • <i>Where comprehensive reporting of all Exploration Results is not practicable, representative reporting of both low and high grades and/or widths should be practiced to avoid misleading reporting of Exploration Results.</i> 	<ul style="list-style-type: none"> • Plan and cross sectional views are contained within this announcement.
Other substantive exploration data	<ul style="list-style-type: none"> • <i>Other exploration data, if meaningful and material, should be reported including (but not limited to): geological observations; geophysical survey results; geochemical survey results; bulk samples – size and method of treatment; metallurgical test results; bulk density, groundwater, geotechnical and rock characteristics; potential deleterious or contaminating substances.</i> 	<ul style="list-style-type: none"> • No other exploration data is considered meaningful and material to this announcement.
Further work	<ul style="list-style-type: none"> • <i>The nature and scale of planned further work (e.g. tests for lateral extensions or depth extensions or large-scale step-out drilling).</i> • <i>Diagrams clearly highlighting the areas of possible extensions, including the main geological interpretations and future drilling areas, provided this information is not commercially sensitive.</i> 	<ul style="list-style-type: none"> • Exploration work is ongoing at this time and may involve the drilling of more drill holes, both DC and RC, to further extend the mineralised zones and to collect additional detailed data on known mineralized zones. • No additional information can be made available at this time as it is conceptual in nature and commercially sensitive.