



Riversgold Ltd

A new ASX gold explorer

Inaugural AGM Presentation

24 November 2017

Allan Kelly
Managing Director



Disclaimer/Forward Looking Statements

This presentation contains certain statements which constitute “forward-looking statements”.

These statements include, without limitation, estimates of future capital expenditure; statements regarding the expectation or description of the prospectivity of the Riversgold Limited tenements; future exploration and exploration potential.

Where Riversgold Limited expresses or implies an expectation or belief as to future events or results, such expectation or belief is expressed in good faith and on a reasonable basis. No representation or warranty, express or implied, is made by Riversgold Limited that the matters stated in this presentation will in fact be achieved or prove to be correct.

Forward-looking statements are only predictions and are subject to risks, uncertainties and other factors, which could cause actual results to differ materially from future results expressed, projected or implied by such forward-looking statements.

Such risks and factors include, but are not limited to: emergence of previously underestimated technical challenges; environmental or social factors

Except for statutory liability which cannot be excluded, Riversgold Limited, its officers, employees and advisers expressly disclaim any responsibility for the accuracy or completeness of the material contained in this presentation and exclude all liability whatsoever (including in negligence) for any loss or damage which may be suffered by any person as a consequence of any information in this presentation or any error or omission therefrom.

Riversgold Limited does not undertake any obligation to release publicly any revisions to any forward-looking statement to reflect events or circumstances after the date of this presentation, or to reflect the occurrence of unanticipated events, except as they may be required under applicable securities laws.

A person should not make any investment decision in relation to Riversgold Limited based solely on the information in this presentation. This presentation does not necessarily contain all information which may be relevant or material to the making of an investment decision.

The securities issued are considered highly speculative in nature.

Any investor should make their own independent assessment of the risks of an investment, and with regard to their own particular requirements and financial circumstances, prior to making any decision to invest in Riversgold Limited.

Competent Person Statement

The information in this document that relates to Exploration Results is based on information compiled by Mr Allan Kelly, a Competent Person who is a Member of The Australian Institute of Geoscientists. Mr Kelly is the Managing Director and CEO of Riversgold Ltd. He is a full time employee of Riversgold Ltd and holds shares and option in the Company.

Mr Kelly has sufficient experience which is relevant to the style of mineralisation and type of deposit under consideration and to the activity which he is undertaking to qualify as a Competent Person as defined in the 2012 Edition of the ‘Australasian Code for Reporting of Exploration Results, Mineral Resources and Ore Reserves’. Mr Kelly consents to the inclusion in the presentation of the matters based on his information in the form and context in which it appears.

Information on historical results for the Australian, Cambodian and Alaskan projects, including Table 1 information, is contained in the Independent Geologists Report in the Riversgold Replacement Prospectus dated 11 August 2017.

The Company confirms that it is not aware of any new information or data that materially affects the information in the original market announcements, and that the form and context in which the Competent Persons findings are presented have not been materially modified from the original market announcements.

Riversgold Ltd – Investment Highlights

1

- **New ASX-listed exploration company with highly prospective projects in three world-class gold terranes**

2

- **Board with track record of successful discovery, development and production**

3

- **Well funded following successful \$6.1M IPO**
- **A\$2.5M cornerstone investment from Australia's second largest gold miner - Evolution Mining Ltd**

4

- **Numerous drilling targets identified**
- **First drilling campaign completed within 4 weeks of listing**

A clear vision

“To create superior value for our shareholders by discovering and monetising world-class mineral projects.”

Our strategy

- Build a portfolio of world-class mineral projects through exploration and/or acquisition
- Monetise the projects at the appropriate time in the project life cycle through partial/full sale and/or JV deals
- Regularly refresh the project portfolio

Riversgold Ltd - Corporate Snapshot

ASX Symbol	RGL
Shares on Issue	82.8M
Market Cap. (@\$0.18)	\$15.0M
Cash (post IPO expenses)	~\$5M
Options (\$0.20)	21.8M

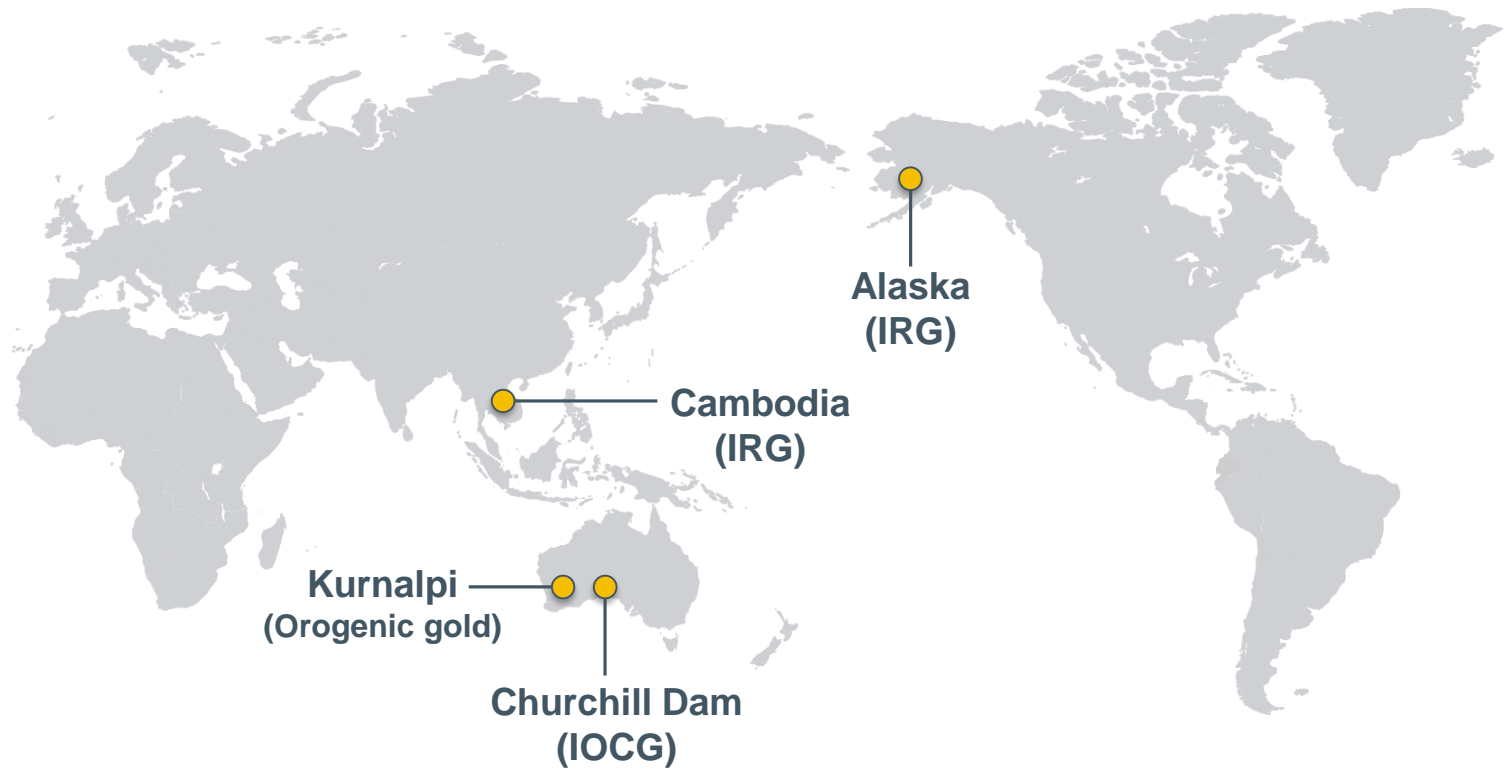
Major Shareholders	%
Greenwich Equities	17.0
Evolution Mining Ltd	15.1
Board/Management	10.1
Top 20 Shareholders	66.9

Experienced Board

Rod Webster Non-Exec Chairman	<ul style="list-style-type: none"> Mining engineer with >40 years experience Formerly Western Metals, First Quantum, Weatherly
Allan Kelly Managing Director	<ul style="list-style-type: none"> Geologist, founder and former MD, Doray Minerals Ltd Most successful ASX IPO of 2010 AMEC "Prospector Award", 2014
Jeff Foster Non-Exec Director	<ul style="list-style-type: none"> Geologist with >30 years experience Founder and former Exec Director, Sirius Resources Formerly WMC, BHP, Sirius and S2 Resources

Projects

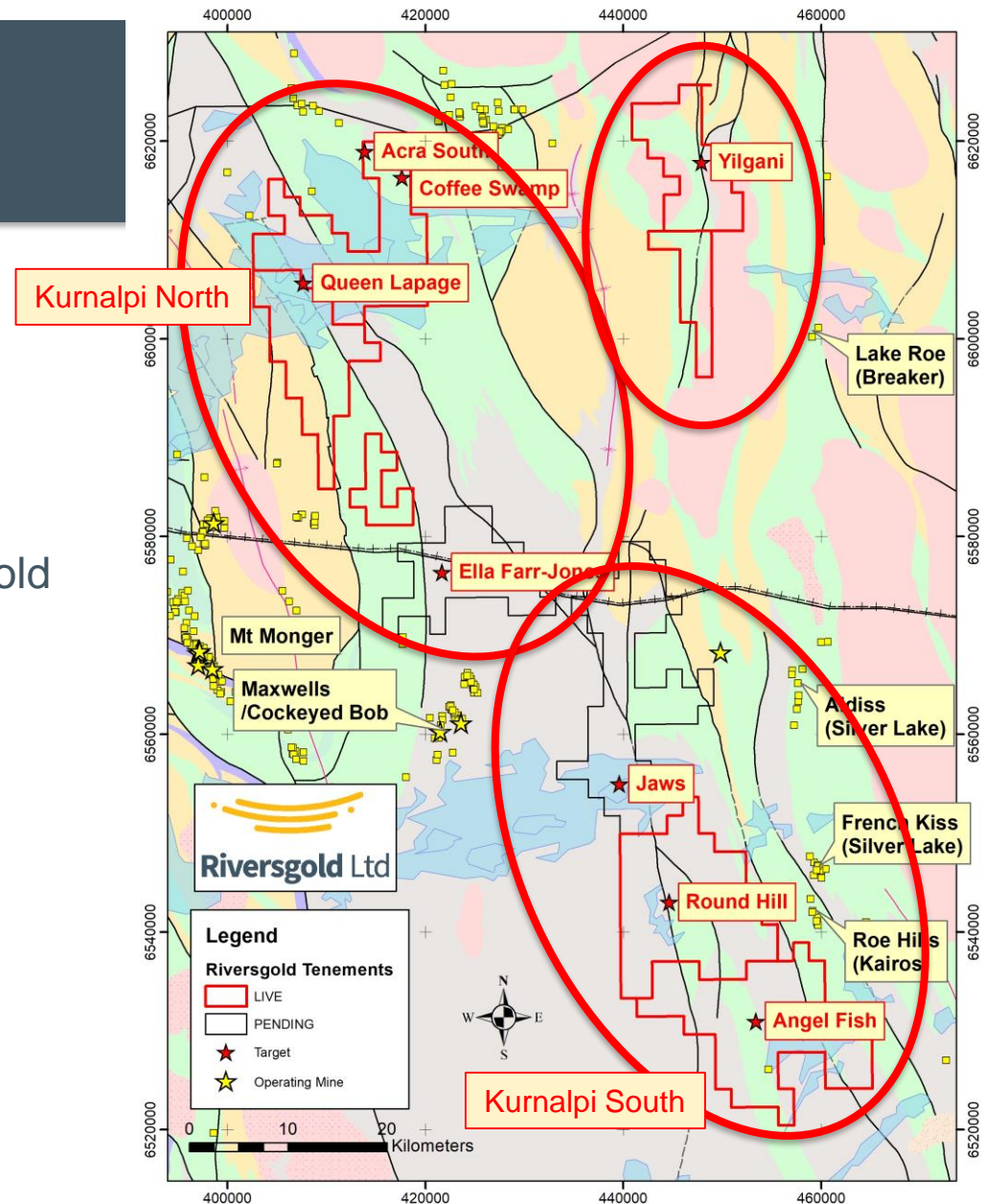
Highly prospective gold projects with potential for year-round news flow



IRG – Intrusion-related gold
IOCG – Iron oxide Cu-Au

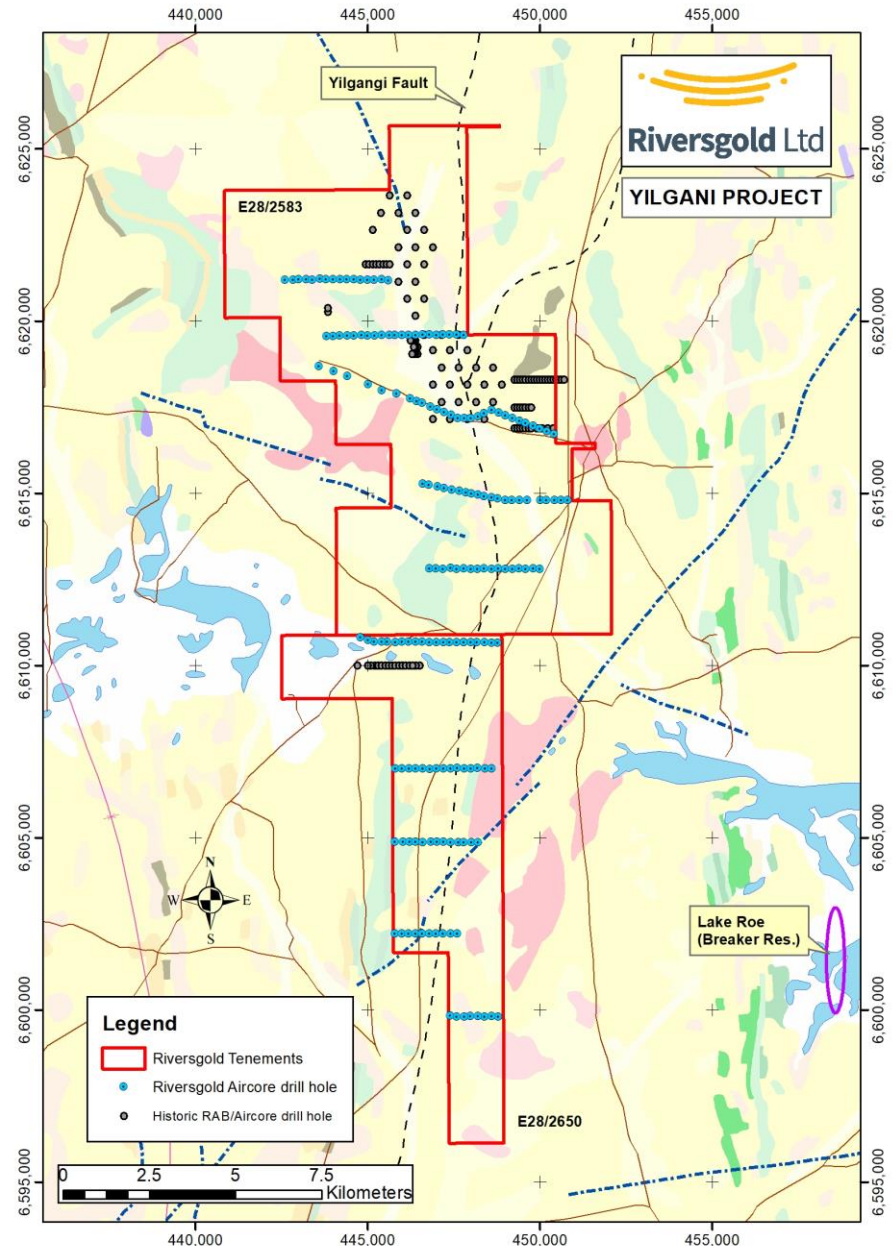
Kurnalpi Projects

- Strategic land position east of Kalgoorlie, WA
- Exploration JV with Serendipity Resources Pty Ltd (RGL 80%)
- **Exploration hot spot** – recent gold discoveries by:
 - Breaker – Lake Roe
 - Apollo - Bombora
- Proximity to existing mills and infrastructure
- **Drill ready targets** along known mineralised trends
- Numerous auger/surface geochemical gold anomalies
- Limited drilling >100m deep



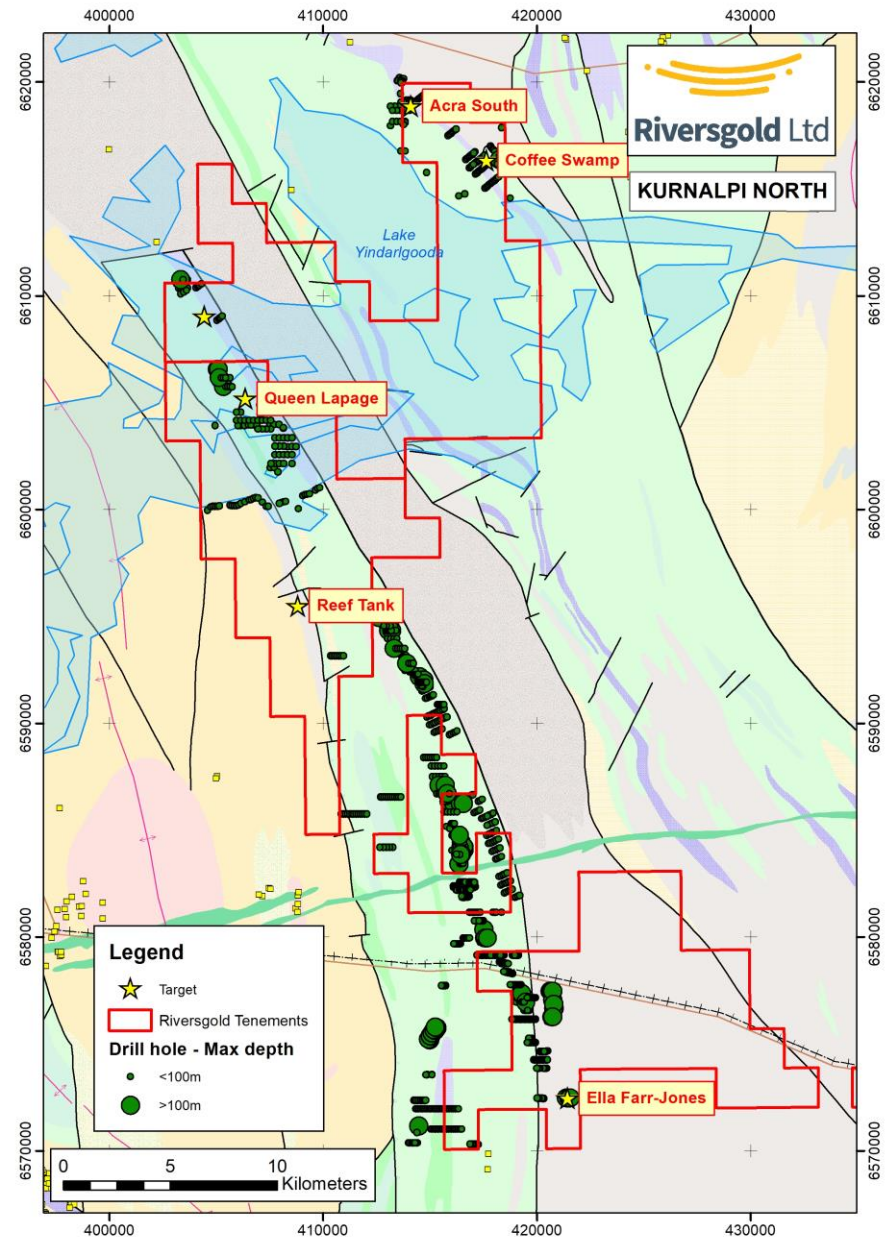
Yilgani

- Along strike from Carosue Dam and Pinnacles gold deposits
- Multiple historic auger anomalies
- Previous drilling limited to shallow RAB/aircore adjacent to northern granites
- Southern tenement untested for 15km along Yilgani Fault
- Possible folded repetition of Lake Roe Greenstone Belt?
- **Maiden aircore programme completed – awaiting assays**



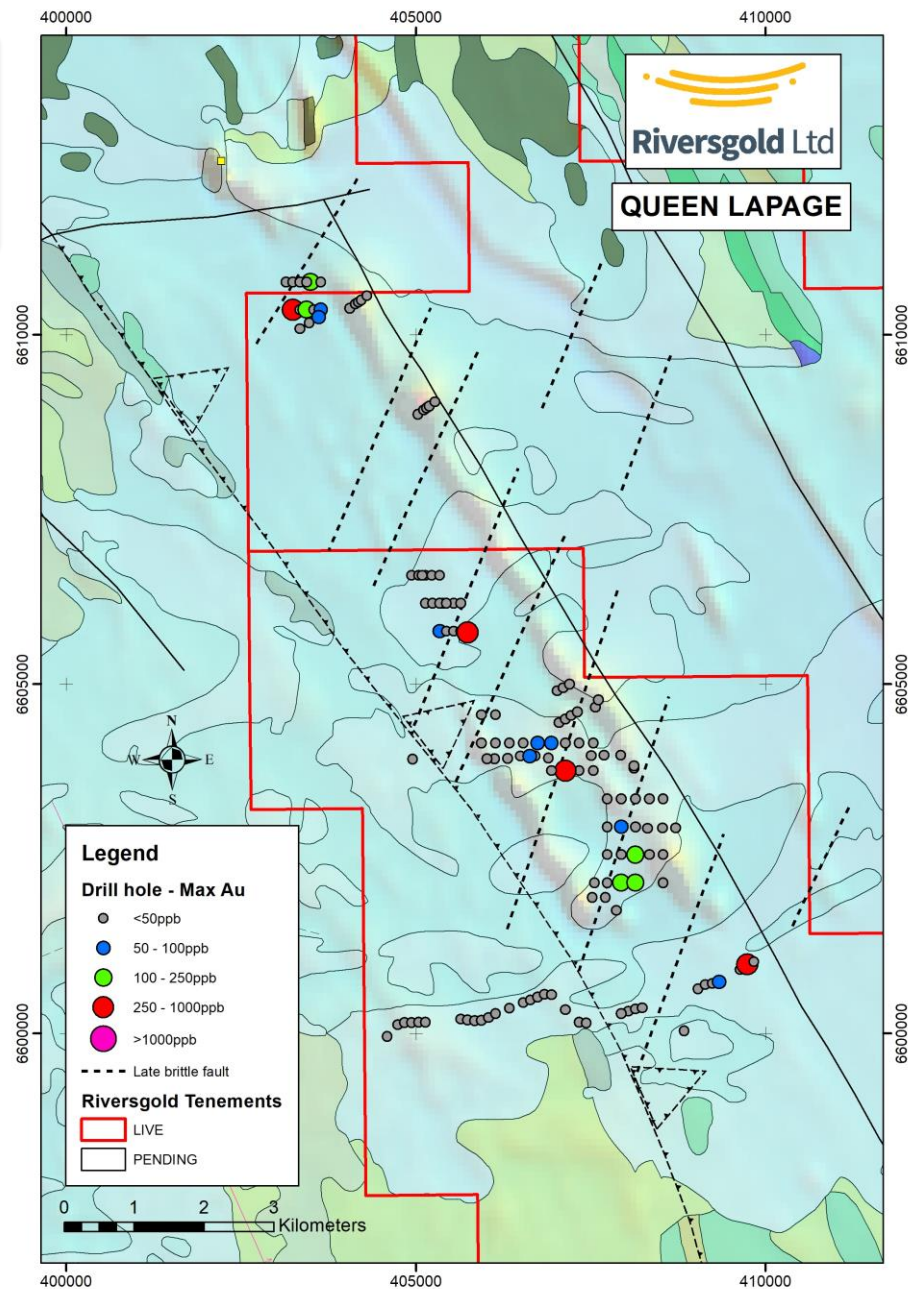
Kurnalpi North

- **Acra South/Coffee Swamp**
 - Anomalous gold (4m @ 1.7g/t) on mafic/ultramafic contact
- **Queen Lapage**
 - 11km zone of anomalous gold under lake sediments
- **Reef Tank**
 - 1820ppb Au soil anomaly not drilled
- **Ella/Farr-Jones**
 - Farr-Jones (2m @ 4.71g/t) on single drill section - open at depth/along strike



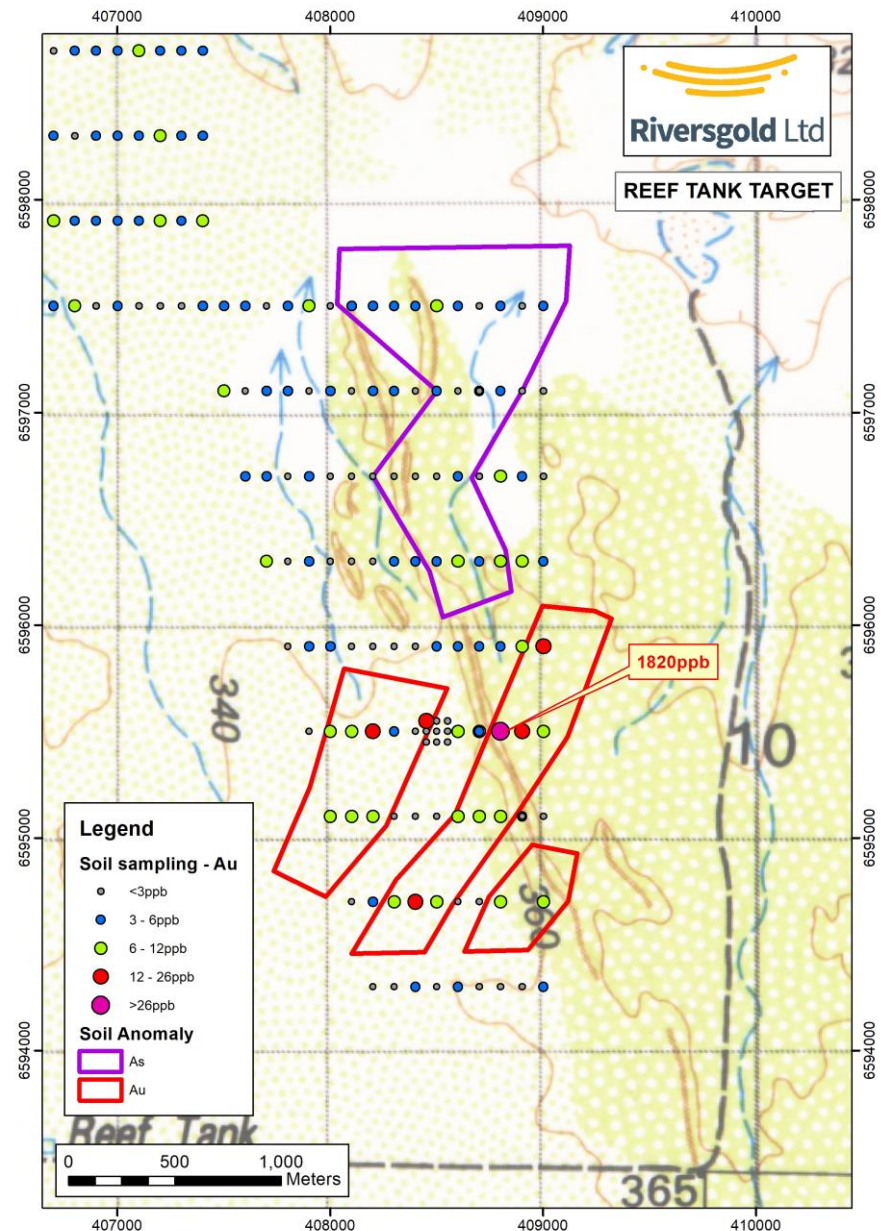
Queen Lapage

- +11 km long aircore Au anomaly – untested under lake sediments
- Mafic/sediment contact with ultramafic rocks along contact
- Numerous NNE-trending late brittle structures
- No drill testing of structures in sediments to NE

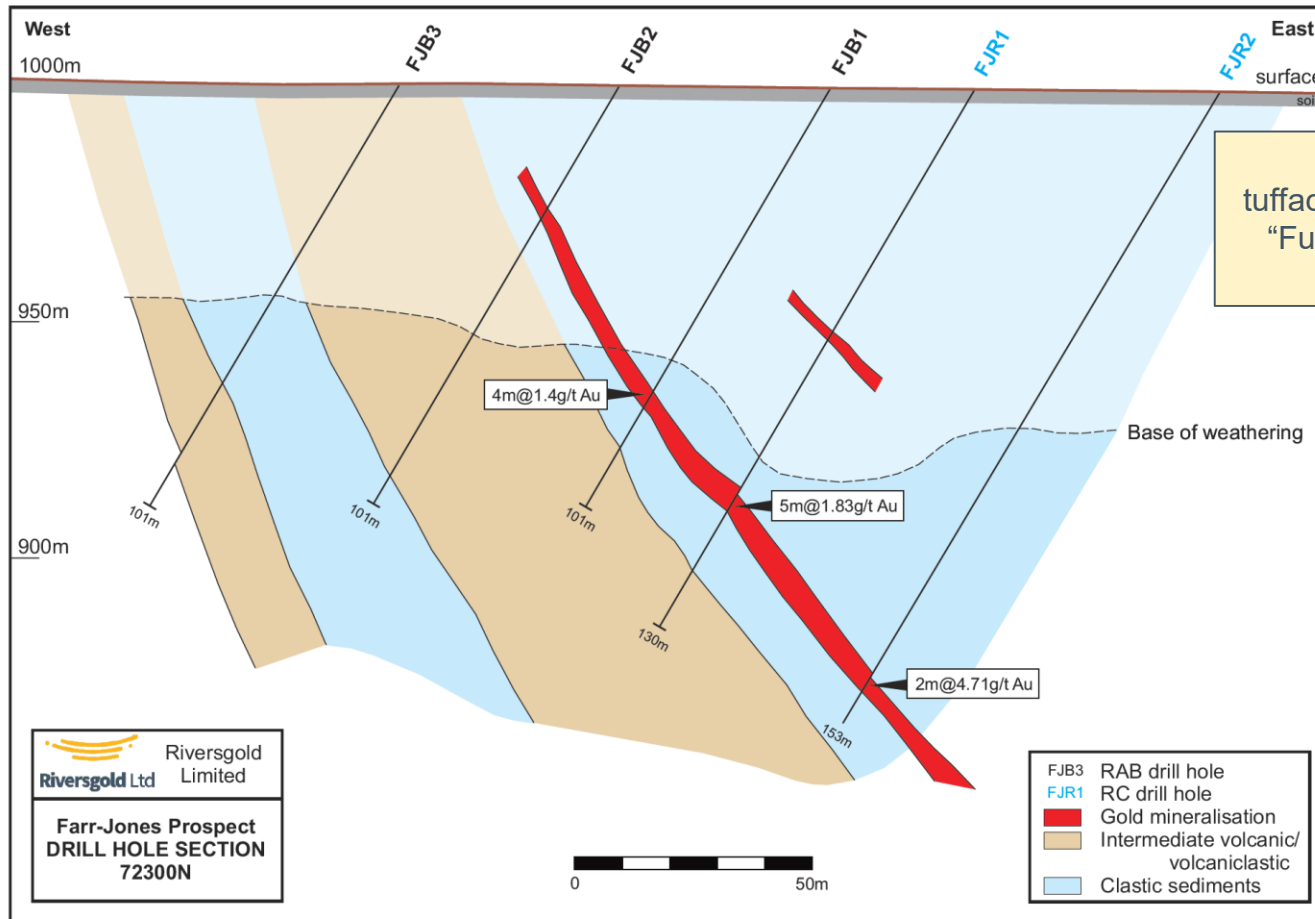


Reef Tank

- Multiple 1-2km long soil anomalies cross-cutting NNW stratigraphy
- Peak value **1,820ppb Au**
- Arsenic “plume” suggests potential for bedrock gold mineralisation
- Open along strike to NE
- **Not drilled**



Farr-Jones – open at depth/along strike

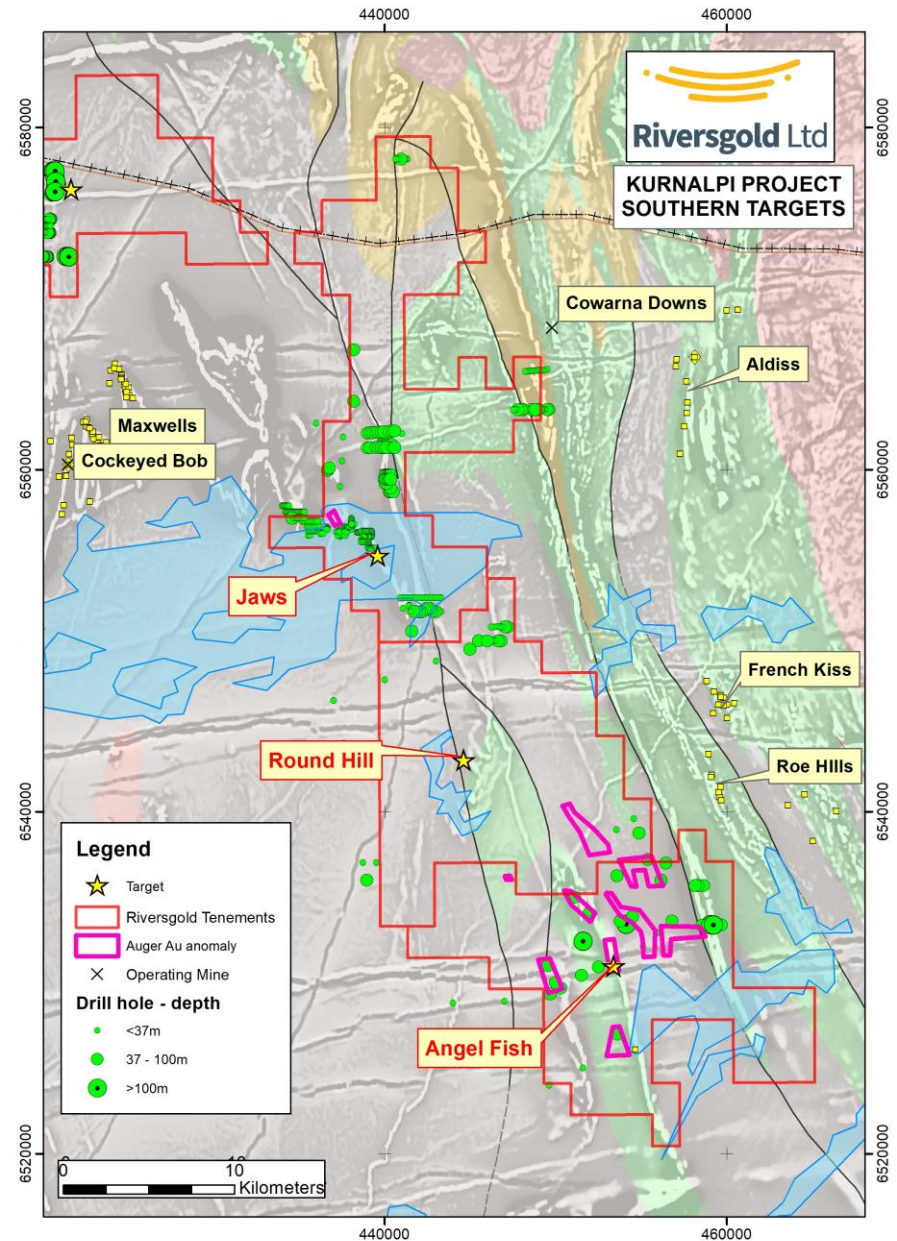


“Significant quartz veining in tuffaceous sediments and black shales”
“Further drill testing is warranted...”
Mt Martin Gold Mines, 1992.



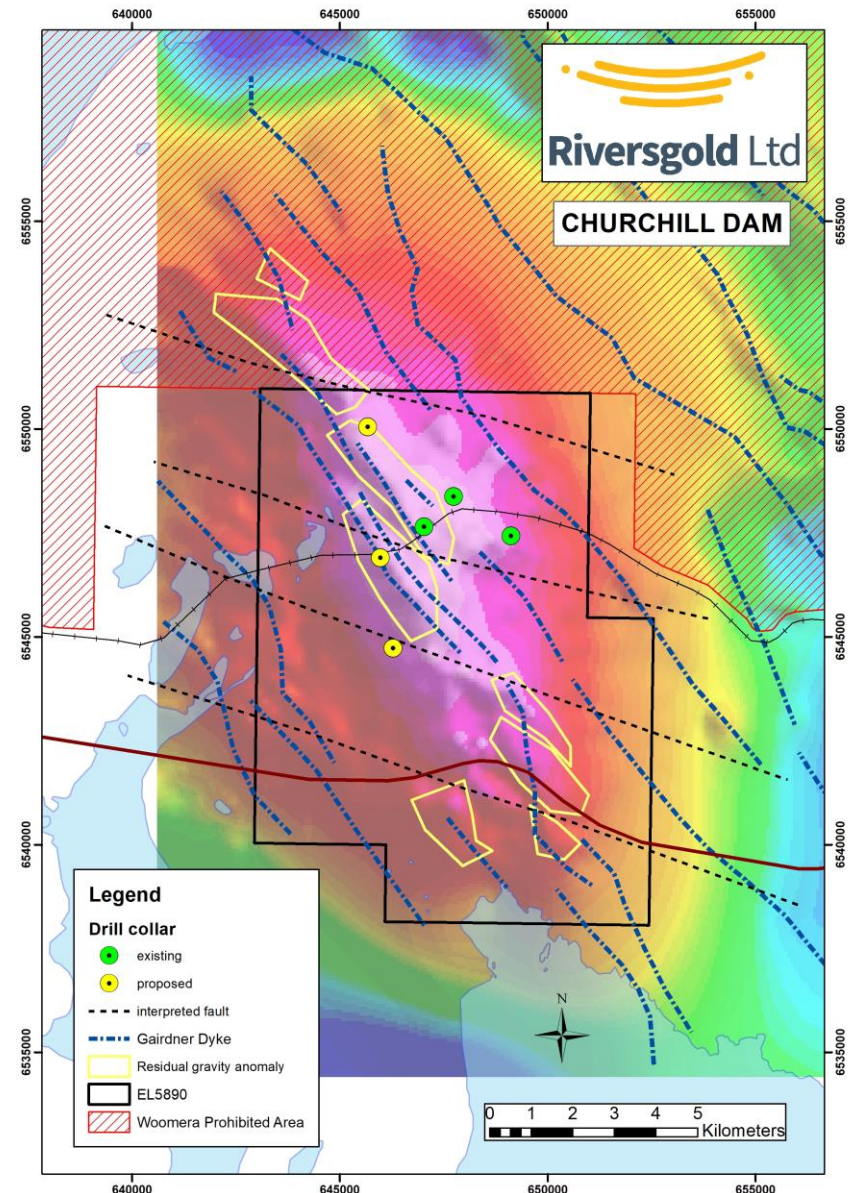
Kurnalpi South

- **Jaws**
 - Folded BIF – analogous to Maxwells/Cockeyed Bob
 - Under lake sediments
- **Round Hill/Angel Fish**
 - Numerous surface geochem/auger Au anomalies
 - Minimal drilling along major structures/contacts



Churchill Dam, SA

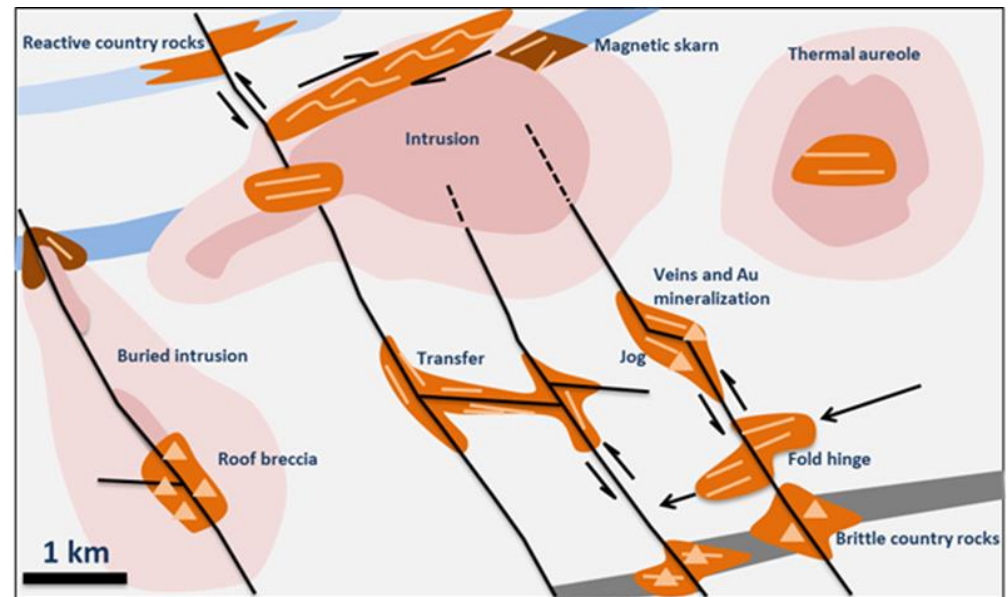
- Large +5mgal gravity anomaly 90km south of giant Olympic Dam Cu-Au-Ag-REE deposit
- Proximity to numerous other large IOCG deposits
- Previous drilling intersected:
 - hematite breccia in GRV
 - elevated Cu-Au-U-REE's
 - potassic/sodic alteration
- **Main part of gravity anomaly remains untested**
- Plan to drill in 1H 2018



Intrusion-related gold (IRG)

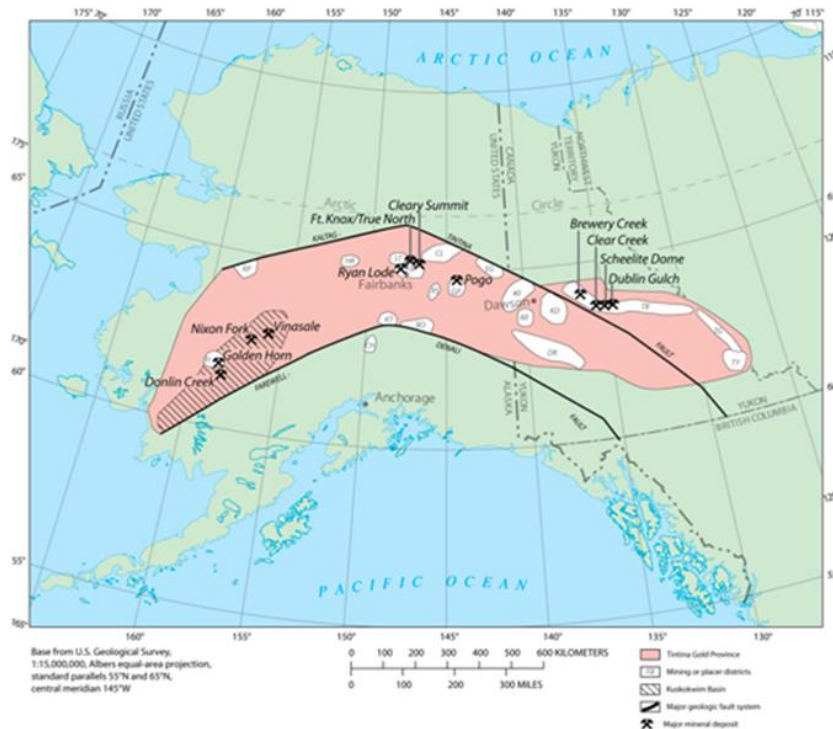
- A relatively new gold deposit style – first recognised in the Tintina Gold Province of Alaska, USA in mid 1990's
- Associated with Late Cretaceous/Tertiary magmatism

- Can be **very large**
 - Donlin (39Moz M+I)
 - Livengood (11.5Moz M+I)
 - Fort Knox (7Moz prod'n)
 - Pogo (280kozpa)
- Can also be **high grade**
 - Nixon Fork (18g/t Au)



Models for intrusive-related gold deposits (modified from Stephens et al, 2004)

Why Alaska?

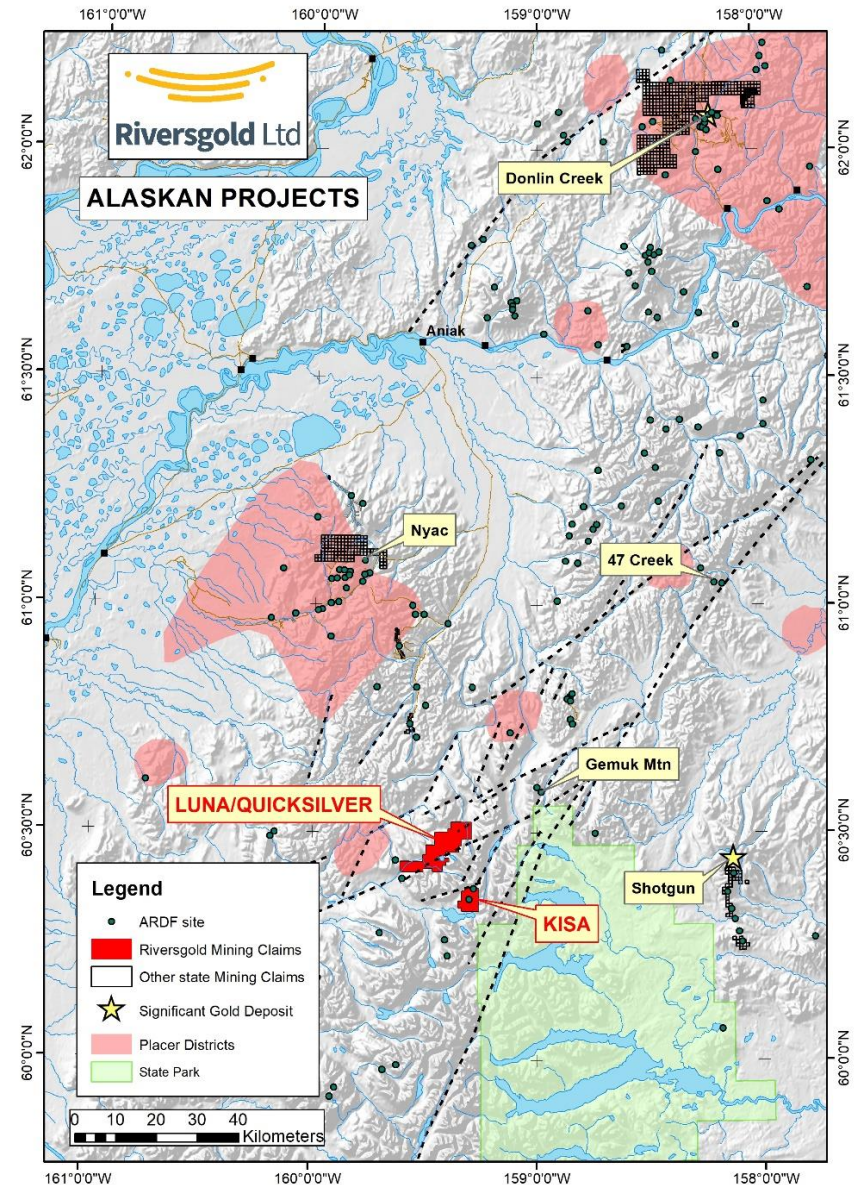


Tintina Gold Province

- World-class mineral endowment
- Stable Federal/State government
- Established mining/exploration industry
- Clearly defined land status
- Permitting process well understood
- Cooperative regional native corporations

Alaska Projects

- Kuskokwim Mountains - SW end of Tintina Gold Province
- 190km SSW of Donlin Creek (42Moz Au)
- Second order splay fault off “Denali-Farewell” Fault
- Historic placer mining area
- 171 State mining claims
- Proprietary regional geochemistry and geophysics datasets



Luna-Quicksilver Project



Luna-Quicksilver Project (looking towards NE)
with discoloured Luna outcrop in foreground and
Quicksilver in distance

- >20km long mineralised fault - mostly hidden beneath shallow glacial till/alluvial layer
- **Outcropping high-grade gold mineralisation:**
 - Luna (up to 64.7g/t Au)
 - Quicksilver (up to 37g/t Au)
- **Outcropping massive sulphide:**
 - Luna East (1% Cu)
- Helimag survey recently completed
- **Never drilled**
- Potential for large/high-grade intrusive related gold deposit

Luna-Quicksilver Project

Luna East
Massive sulphide outcrop
1% Cu, 90g/t Ag, 1 g/t Au

Luna
High grade rock chips
up to 64.7g/t Au

Quicksilver
High grade rock chips up
to 37.5g/t Au

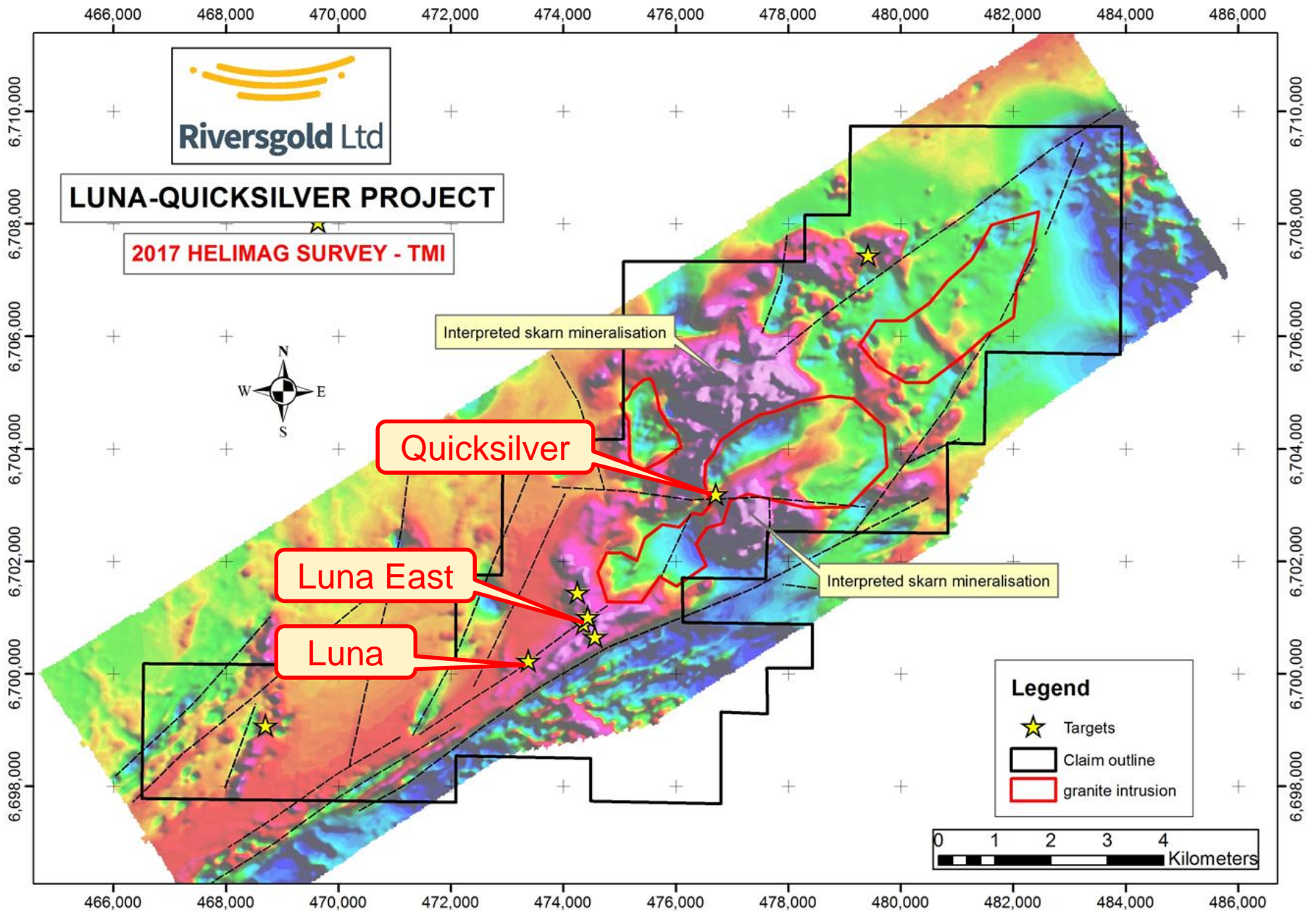
5km

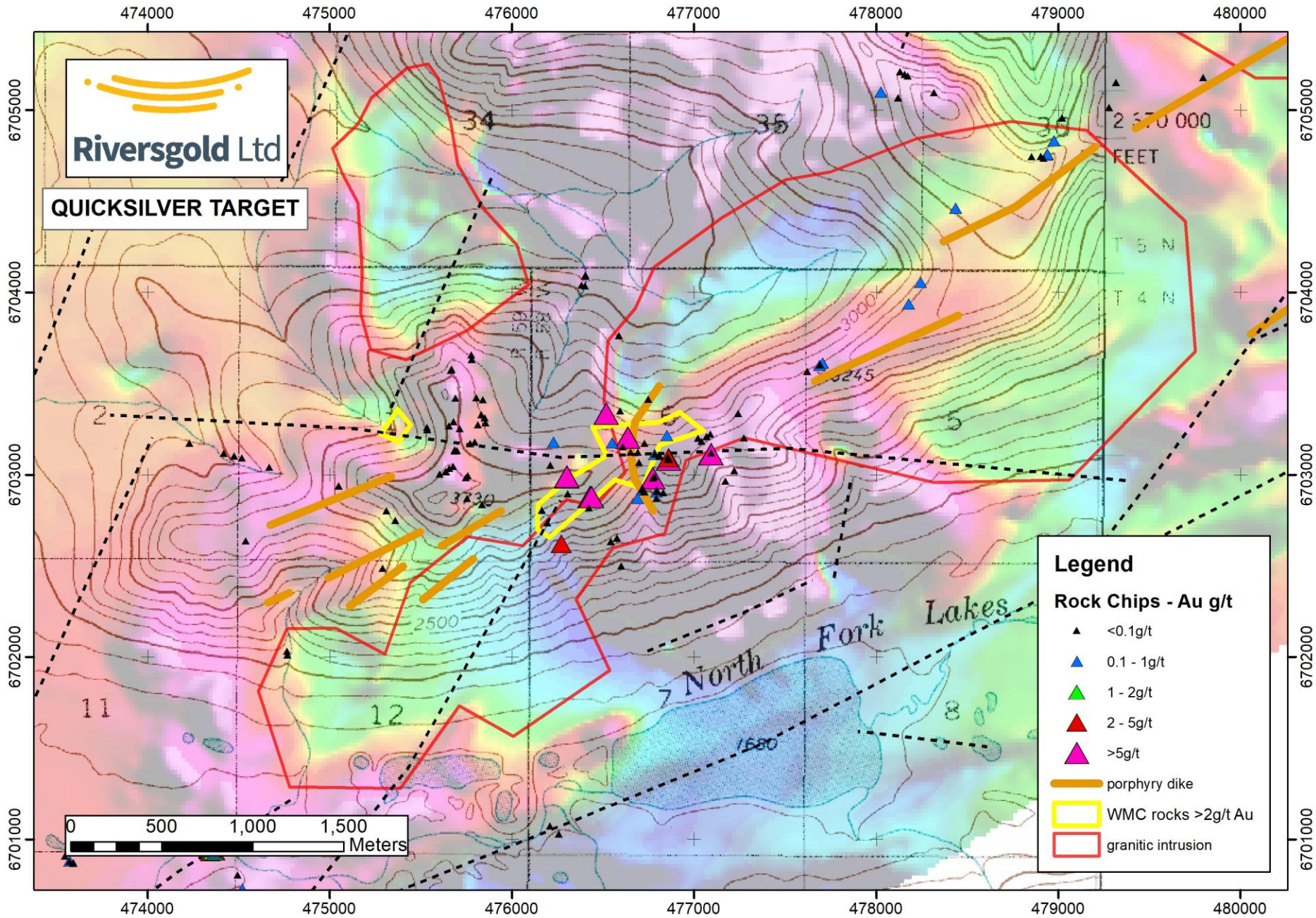
Google Earth

Image Landsat / Copernicus

3 km

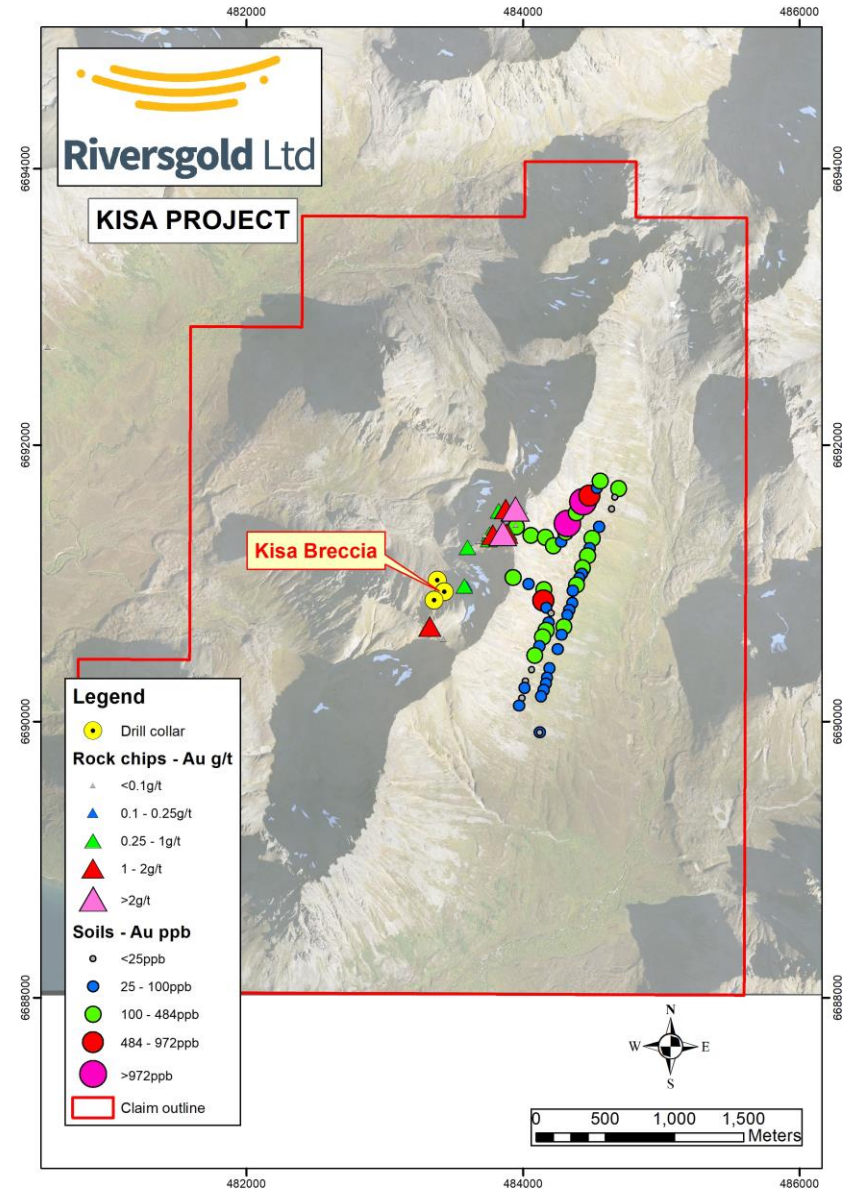






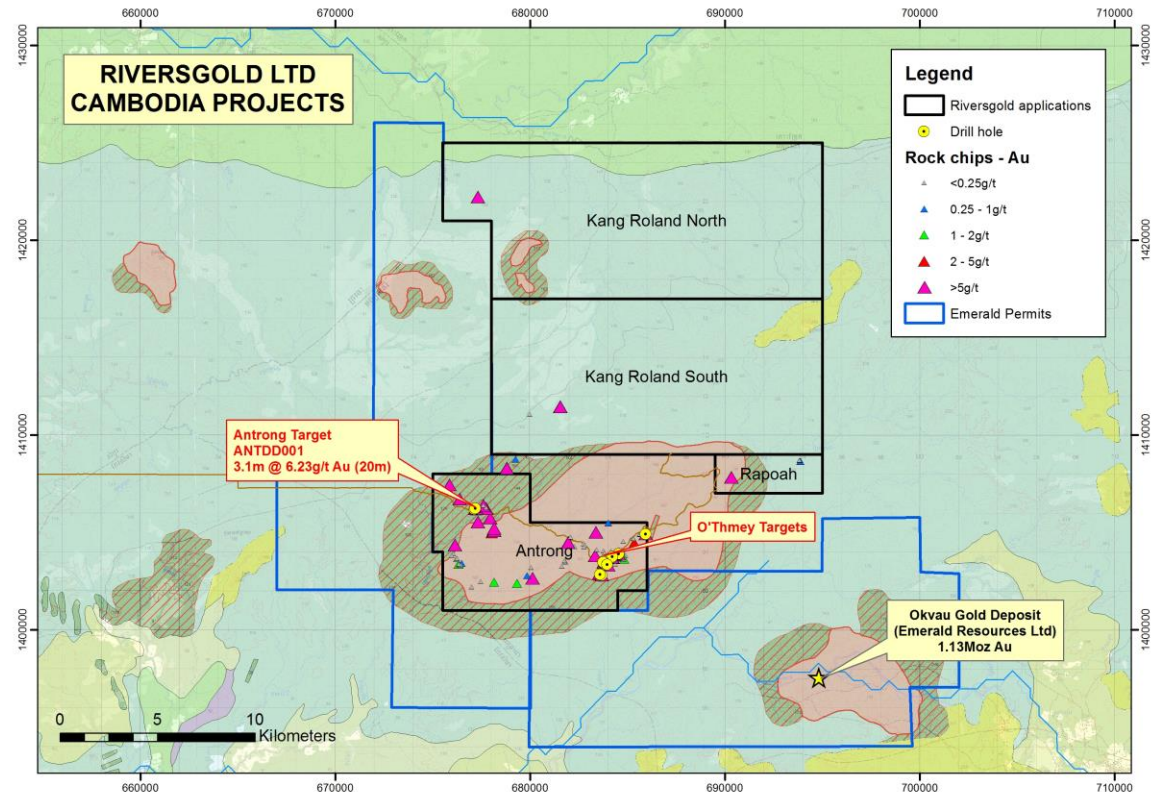
Kisa Project

- **Outcropping breccia and mineralised dyke swarm**
- Soil anomalism and mineralised rock chips
- 2007 drilling intersects **wide zones of gold mineralisation** in all six diamond holes:
 - K07-05 – **48m @ 1.18g/t Au**
 - K07-06 – **6.1m @ 1.58g/t Au**



Cambodia

- Four tenement applications **adjacent to 1.13Moz “Okvau” IRG deposit**
- High-grade rock chips surrounding Antrong granite
- **Large soil/auger anomalies**
- **Narrow high-grade drill intercepts:**
 - Antrong
 - O’Thmey



First 12 months

	2017			2018	
<u>Project</u>	Sep	Dec	Mar	Jun	Sep
IPO/Listing					
WA		D	D	D	D
SA			D		
Alaska					D
Cambodia					
News flow		R	R	R	R

D – Drill program (subject to approvals)

R – Results/news flow

Summary



Board with a track record of successful discovery



Kurnalpi - first drilling campaign completed within 4 weeks of listing – awaiting results



Highly prospective projects in two world-class intrusive-related gold terranes (Alaska and Cambodia)



Large untested IOCG target in South Australia



Well funded following \$6.1M IPO



Substantial upside and potential for year-round newsflow



Riversgold Ltd

www.riversgold.com.au

