

21 December, 2017

## Thick massive sulphides intersected in first holes of latest Tres Amigos North campaign

Consolidated Zinc Limited (ASX:CZL) is pleased to provide an update of the latest extensional and infill resource definition drilling campaign that recommenced on 27 November, 2017 at Plomosas mine in Mexico.

The first two holes completed, LV5039 and LV5040, intersected **thick massive sulphide intervals associated with the Juarez Limestone over 5.60m and 4.35m** respectively. Assays are pending but visual analysis shows mineralisation comprises banded textured massive sulphides with very fine to fine-grained pyrite overprinted by coarse-grained yellow to reddish sphalerite and minor galena associated with carbonates.

**Both mineralised zones are outside of and will potentially extend the current JORC mineral resource envelope.** The mineralised unit in LV5039 occurs 25 metres above the Tres Amigos North resource envelope, while the mineralised unit in LV5040, occurs 75 metres below Level 7.

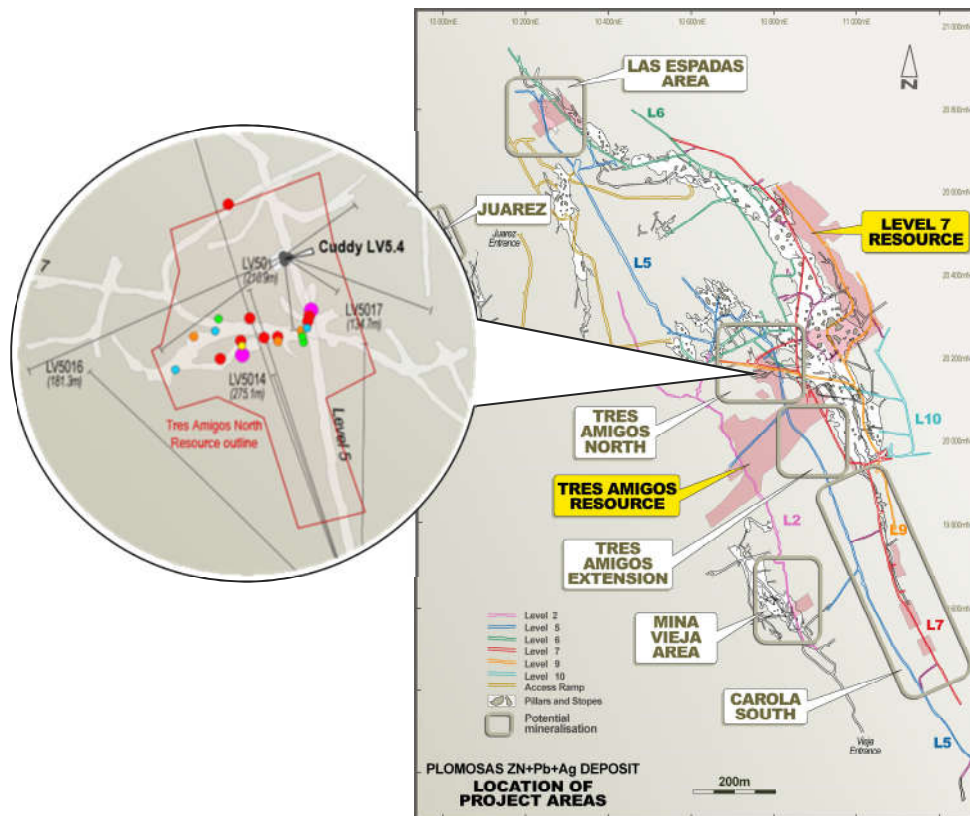


Figure 1. Plan view of Plomosas work areas, Mineral Resource outlines and proposed holes collared in LV5.4 cuddy targeting extensions and infill to the Tres Amigos North resource.

Core is being logged and samples are being submitted for analysis. Full assay results will be reported when they come to hand in approximately late January 2018.

This drill campaign has paused for the Christmas period and the third hole will recommence on 4 January, 2018.

21 December, 2017



Figure 2. Plan of latest campaign drilling to date from Cuddy 5.4 targeting extensions and infill to the Tres Amigos North resource. LV5039 and LV5040 intersected thick massive sulphides outside of and potentially extending the resource envelope.



Figure 3. Massive sulphide mineralisation intersected in LV5039 drill hole from 68.25 to 73.85 metres (5.6m); very fine-grained sphalerite overprinted by yellow to reddish sphalerite and minor galena.

21 December, 2017



*Figure 4. Coarse grained yellow sphalerite overprinting red sphalerite*



*Figure 5. Pyrite band within sphalerite and minor galena*



**Andrew Richards**  
Interim Managing Director

#### **ABOUT CONSOLIDATED ZINC**

Consolidated Zinc Limited (ASX:CZL) is a minerals exploration company listed on the Australian Securities Exchange. The Company's major focus is in Mexico where it recently acquired 51% of the exciting high grade Plomosas Zinc Lead Silver Project through its majority owned subsidiary, Minera Latin American Zinc CV SAPI. Historical mining at Plomosas between 1945 and 1974 extracted over 2 million tonnes of ore grading 22% Zn+Pb and over 80g/t Ag. Only small scale mining continued to the present day and the mineralised zones remain open at depth and along strike. The Company's main focus is to identify and explore new zones of mineralisation within and adjacent to the known mineralisation at Plomosas with a view to identifying new mineral resources that are exploitable.