



Traka Resources Limited

ABN 63 103 323 173

ASX Shareholders Report

Enquiries regarding this announcement and company business may be directed to:

Patrick Verbeek
Managing Director

Ground Floor
43 Ventnor Avenue
West Perth 6005
Western Australia
Tel: (+61) 8 9322 1655
Fax: (+61) 8 9322 9144

www.trakaresources.com.au

Investor Enquiries:
traka@trakaresources.com.au



ASX

AUSTRALIAN SECURITIES EXCHANGE

ASX Code: "TKL"

8 January 2018

Company Announcements
ASX Limited
Level 10, 20 Bond Street
Sydney NSW 2000

Mt Cattlin North JV – exploration program update

Galaxy Resources Limited (Galaxy), as manager of the Mt Cattlin North Joint Venture, has informed Traka that 8 kilometres of Ground Penetrating Radar (GPR) has been completed on the joint venture tenement (EL74/401). The GPR has successfully identified a number of pegmatite targets.

Two scout drill programs are currently being planned to test these targets. The drilling is imminent but subject to wet weather and/or total vehicle movement bans in hot weather. Program details will be provided once they become available.

Traka has a 20% free carried joint venture interest in the Mt Cattlin North Joint Venture tenements. The southern boundary of the joint venture tenements is about 1 kilometre north of Galaxy's Mt Cattlin lithium tantalum mining operation (Figure 1). A number of pegmatite dykes peripheral to a large granitic body east of the Mt Cattlin mine and joint venture tenements are potential sources of additional ore to the existing mining operation.

Patrick Verbeek
Managing Director

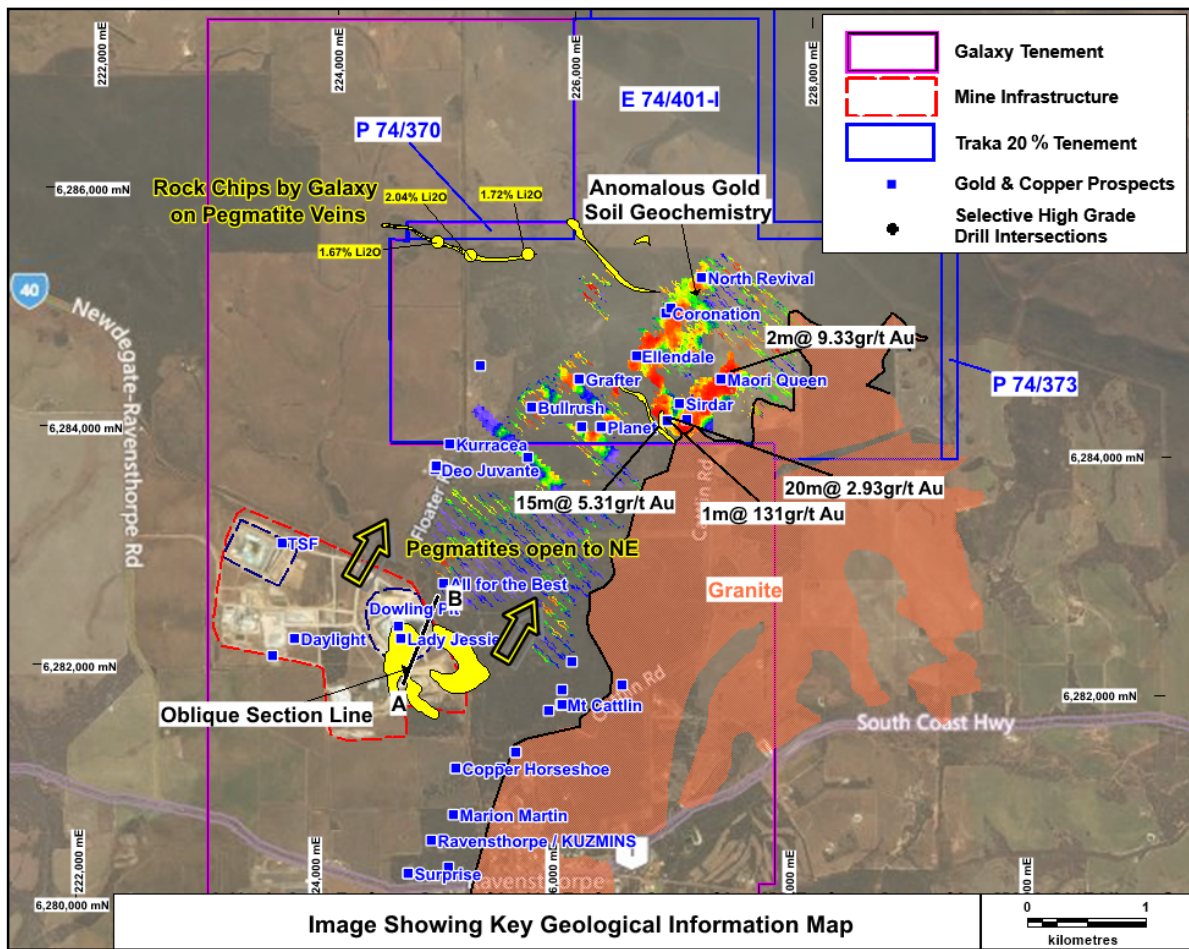


Figure 1: Location diagram of the Mt Cattlin North JV tenements in relation to the Mt Cattlin Lithium Tantalum Mine.