



Future Producer of Neodymium & Praseodymium to the Permanent Magnet Industry

All currency amounts are in A\$ unless stated otherwise.

Disclaimer

This presentation has been prepared by Hastings Technology Metals Limited (“Company”). It does not purport to contain all the information that a prospective investor may require in connection with any potential investment in the Company. You should not treat the contents of this presentation, or any information provided in connection with it, as financial advice, financial product advice or advice relating to legal, taxation or investment matters.

This presentation is provided expressly on the basis that you will carry out your own independent inquiries into the matters contained in the presentation and make your own independent decisions about the affairs, financial position or prospects of the Company. The Company reserves the right to update, amend or supplement the information at any time in its absolute discretion (without incurring any obligation to do so).

Neither the Company, nor its related bodies corporate, officers, their advisers, agents and employees accept any responsibility or liability to any person or entity as to the accuracy, completeness or reasonableness of the information, statements, opinions or matters (express or implied) arising out of, contained in or derived from this presentation or provided in connection with it, or any omission from this presentation, nor as to the attainability of any estimates, forecasts or projections set out in this presentation. Pursuant to the general law (whether for negligence, under statute or otherwise), or any Australian legislation or any other jurisdiction. Any such responsibility or liability is, to the maximum extent permitted by law, expressly disclaimed and excluded. Nothing in this material should be construed as either an offer to sell or a solicitation of an offer to buy or sell securities. It does not include all available information and should not be used in isolation as a basis to invest in the Company.

Forward Looking Statements

This presentation contains reference to certain intentions, expectations, future plans, strategy and prospects of the Company. Those intentions, expectations, future plans, strategy and prospects may or may not be achieved. They are based on certain assumptions, which may not be met or on which views may differ and may be affected by known and unknown risks. The performance and operations of the Company may be influenced by a number of factors, many of which are outside the control of the Company. No representation or warranty, express or implied, is made by the Company, or any of its directors, officers, employees, advisers or agents that any intentions, expectations or plans will be achieved either totally or partially or that any particular rate of return will be achieved.

Given the risks and uncertainties that may cause the Company’s actual future results, performance or achievements to be materially different from those expected, planned or intended, recipients should not place undue reliance on these intentions, expectations, future plans, strategy and prospects. The Company does not warrant or represent that the actual results, performance or achievements will be as expected, planned or intended.

Exploration Targets

The terms “Target” or “Exploration Target” where used in this presentation should not be misunderstood or misconstrued as an estimate of a Mineral Resource as defined in this context. Exploration Targets are conceptual in nature, there has been insufficient exploration to define a Mineral Resource and it is uncertain further exploration will result in the determination of a Mineral Resource.

Competent Persons’ Statement

The information in this announcement and DFS that relates to Resources is based on information compiled by Lynn Widenbar. Mr Widenbar is a consultant to the Company and a member of the Australasian Institute of Mining and Metallurgy. The information in this announcement and DFS that relates to Exploration Results is based on information compiled by Andy Border, an employee of the Company and a member of the Australasian Institute of Mining and Metallurgy.

Each has sufficient experience relevant to the styles of mineralisation and types of deposits which are covered in this announcement and DFS and to the activity which they are undertaking to qualify as a Competent Person as defined in the 2012 edition of the ‘Australasian Code for Reporting of Exploration Results, Mineral Resources and Ore Reserves’ (“JORC Code”). Each consent to the inclusion in this announcement and DFS of the matters based on his information in the form and context in which it appears.

The information in this announcement and DFS that relates to the Fraser’s and Bald Hill Ore Reserve is based on information reviewed or work undertaken by Mr Frank Blanchfield, FAusIMM, and an employee of Snowden Mining Industry Consultants. Mr Blanchfield has sufficient experience relevant to the style of mineralisation and type of deposit under consideration and to the preparation of mining studies to qualify as a Competent Person as defined by the JORC Code 2012. Mr Blanchfield consents to the inclusion in this announcement and DFS of the matters based on his information in the form and context in which it appears.

The scientific and technical information in this announcement and DFS that relates to process metallurgy is based on information reviewed by Mr Dale Harrison MAusIMM, who is a metallurgical consultant and employee of Wave International. Mr Harrison has sufficient experience that is relevant to the style of mineralisation and type of deposit under consideration and to the activity being undertaken to qualify as a Competent Person as defined by the JORC Code 2012. Mr Harrison consents to the inclusion in this announcement and DFS of the matters based on his information in the form and context in which it appears.

US disclosure

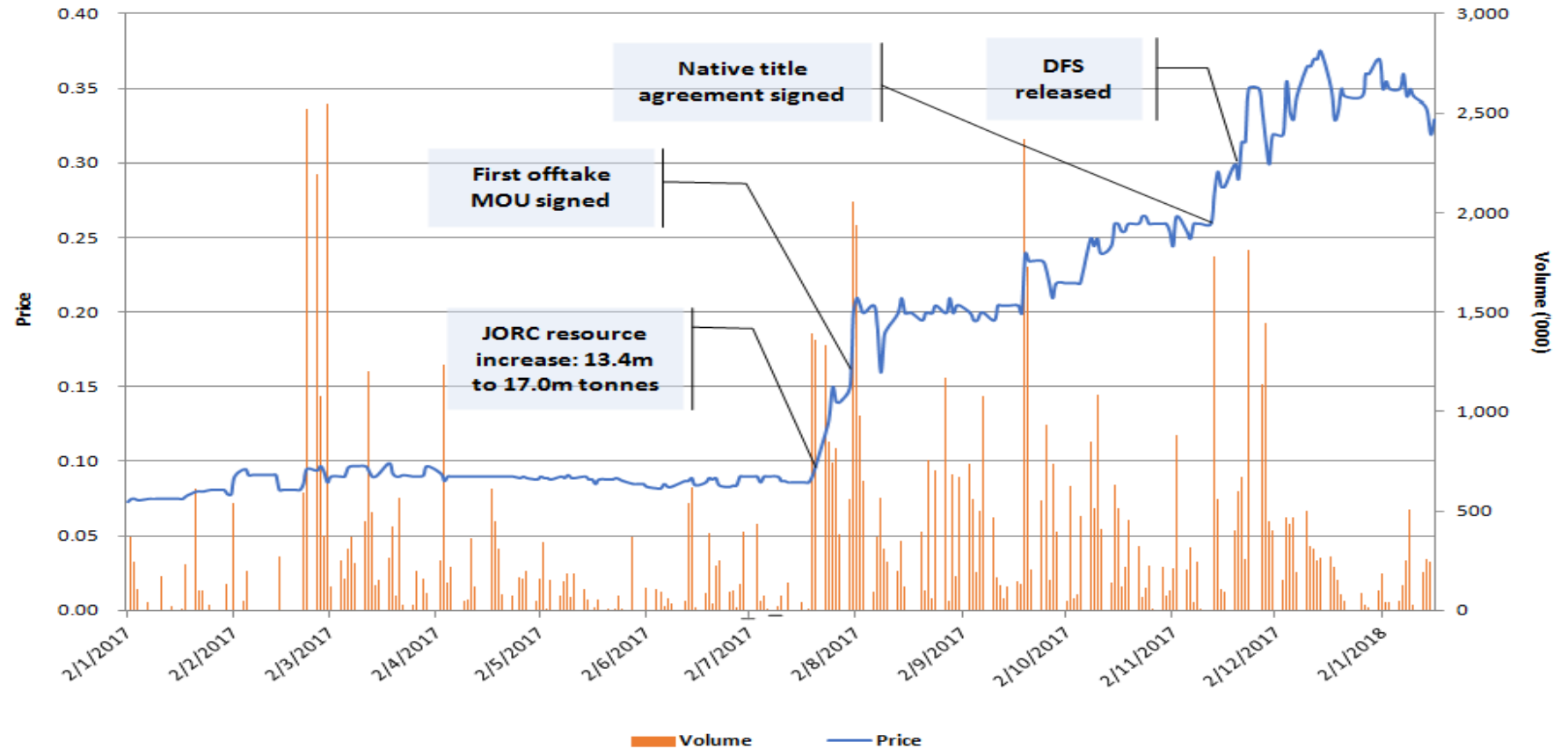
This document does not constitute any part of any offer to sell, or the solicitation of an offer to buy, any securities in the United States or to, or for the account or benefit of any “US person” as defined in Regulation S under the US Securities Act of 1993 (“Securities Act”). The Company’s shares have not been, and will not be, registered under the Securities Act or the securities laws of any state or other jurisdiction of the United States, and may not be offered or sold in the United States or to any US person without being so registered or pursuant to an exemption from registration including an exemption for qualified institutional buyers.

Hastings Equity Statistics

Steady growth in market cap since Jan 2014

- Market Cap ~ **A\$ 230m**
- ~ 1200 Shareholders
+55% in 2017
- Top 10 shareholders
owns 70%
- **A\$ 46m** raised since
2014
- Zero Debt

Hastings ASX Daily Price Chart



Definitive Feasibility Study (DFS) – Yangibana*

Independent Study by Wave International and Snowden

- JORC resource of **21m tonnes** supports an initial 8 years mine life on 100% held ground
- Maiden JORC Probable Ore Reserves of **5.15 million tonnes** on 100% owned ground
- Highest known Neodymium & Praseodymium (Nd-Pr) content at **41% of TREO**
- Mining 1m tonnes pa to produce up to **15,000 tonnes pa** of Mixed Rare Earths Carbonate
- Nd-Pr metallurgical recovery **75.6%** achieved in pilot test plant
- Financial Highlights:
 - **NPV (after tax) = A\$466m at 8% discount rate**
 - **IRR = 78%**
 - **EBITDA payback of 2.3 years** from average equity drawdown period
 - Pre-production **CAPEX – A\$335m ; OPEX - A\$17.06/kg TREO (US\$12.8/kg)**
- Significant scope to expand production and mine life beyond 8 years

Early Works Programme

Commencing Q1 2018



Bulk earthworks contracts scope developed and contractors under evaluation



240 room village being sourced (options for 2nd hand villages being reviewed to lower costs)



Civil engineering design being finalised for:

- Access roads
- Village areas
- Laydown pad for core and Sample prep yard



Engage contractors for Early Contractor Involvement Process (ECI) for Processing Plant



Order Critical Path Long Lead items (Rotary Kiln, Sulphuric Acid Plant, SAG mill)

1

Establish Critical Path for execution and establish monitoring process to eliminate deviations

2

Develop Maintenance Strategies in parallel to Engineering design works

3

Review Risk management protocols and establish systems for health and safety, environment and legal compliance

4

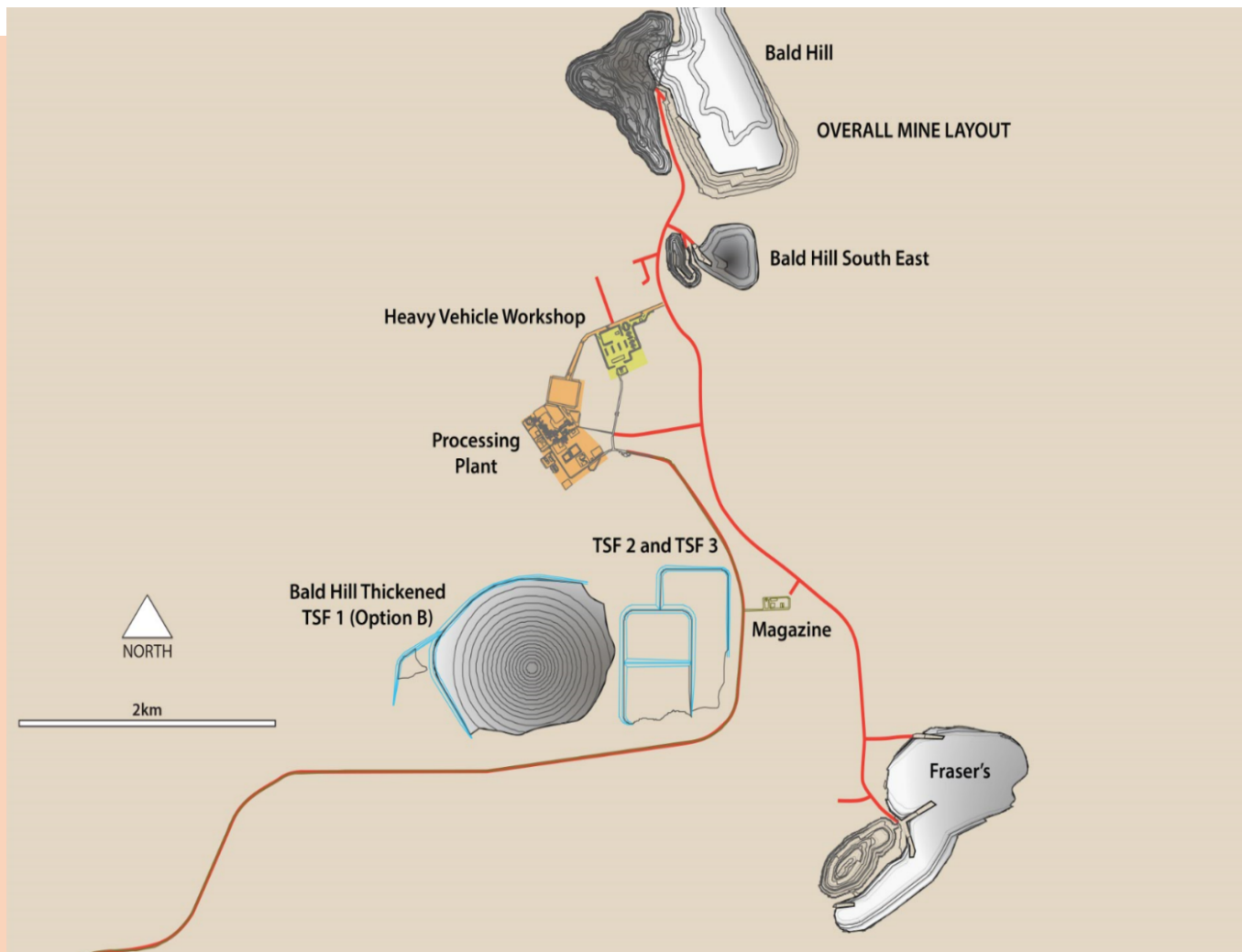
Establish and enter into supply agreements (parts, consumables etc)

5

Community Engagement via signed Native Title Agreement
Engagement with Shire, State authorities, local pastoralists

Overall Mine Layout

Optimising logistics between deposits



- Mining focus conventional drill and blast
- Pit optimisations were completed to determine the economic mining limits for each deposit
- Waste dumps located to minimise haulage distances
- Mining schedule based on value creation and waste reduction
- Water supply – sourced from bore-field near to process plant



- Purchase Order placed for Accommodation Village (240 rooms)
- Tenders prepared for Bulk Earthworks
- Tenders issued for Long Lead Items (Rotary Kiln and Sulphuric Acid Plant)



Capital Cost for Infrastructure A\$50-60m

Expected Completion September 2018



- Roads /Bulk Earthworks - Access Roads & River Crossings
- Accommodation Village and support infrastructure
- Upgrade airstrip at Gifford Creek
- Power Plant – Diesel, LNG and Solar being evaluated
- Alternative Trucking & Shipping Logistics
- In discussion with NAIF for partial funding support



Milestones to production by Q3 2019

PROJECT IMPLEMENTATION SCHEDULE FOR YANGIBANA RARE EARTHS PROJECT

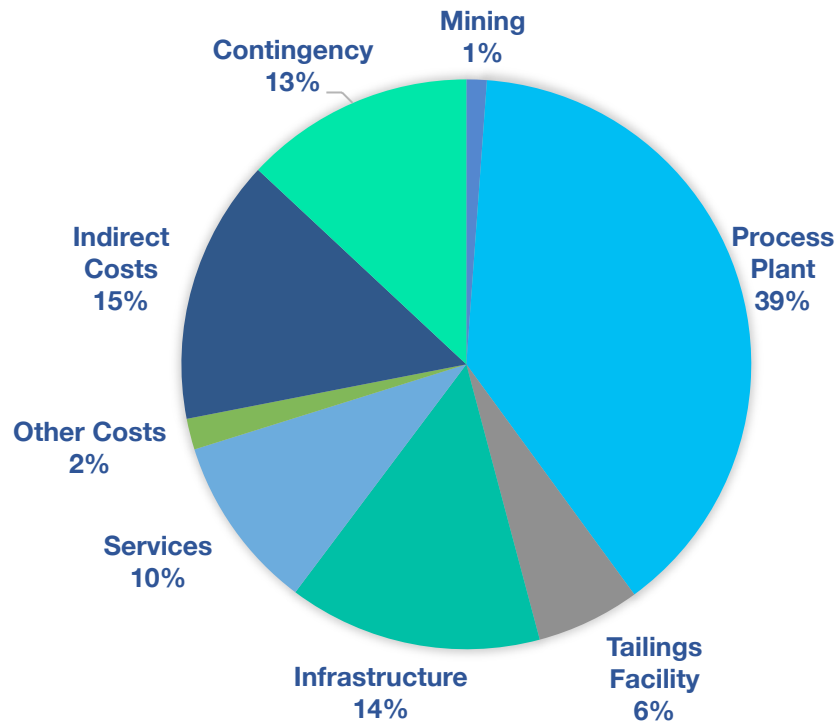
Activities	2017		2018												2019												2020	
	N	D	J	F	M	A	M	J	J	A	S	O	N	D	J	F	M	A	M	J	J	A	S	O	N	D	J	F
Definitive Feasibility Study (DFS)	█																											
Permitting & Approvals	█	█	█	█	█	█	█	█																				
Design for Access Road & Bulk Earthwork for Accom Camp	█	█	█	█																								
Construct Access Road & Accomodation Camp			█	█	█	█	█	█	█	█	█	█																
Basic Engineering Design (BED)			█	█	█	█																						
Detailed Engineering							█	█	█	█	█	█	█	█	█	█	█	█	█									
Procure Long Lead Equipment - Rotary Kiln			█	█	█	█	█	█	█	█	█	█	█	█	█	█	█	█	█	█								
Procure Long Lead Equipment - Sulphuric Acid Plant			█	█	█	█	█	█	█	█	█	█	█	█	█	█	█	█	█	█								
Procurement (other equipment & bulk material)							█	█	█	█	█	█	█	█	█	█	█	█	█	█	█	█						
Production Plant Construction										█	█	█	█	█	█	█	█	█	█	█	█	█	█	█	█	█		
Commissioning																									█	█	█	

Above shows only the main Tender Packages

Critical Path

DFS Capital Cost A\$335m

An improvement of 20% from PFS

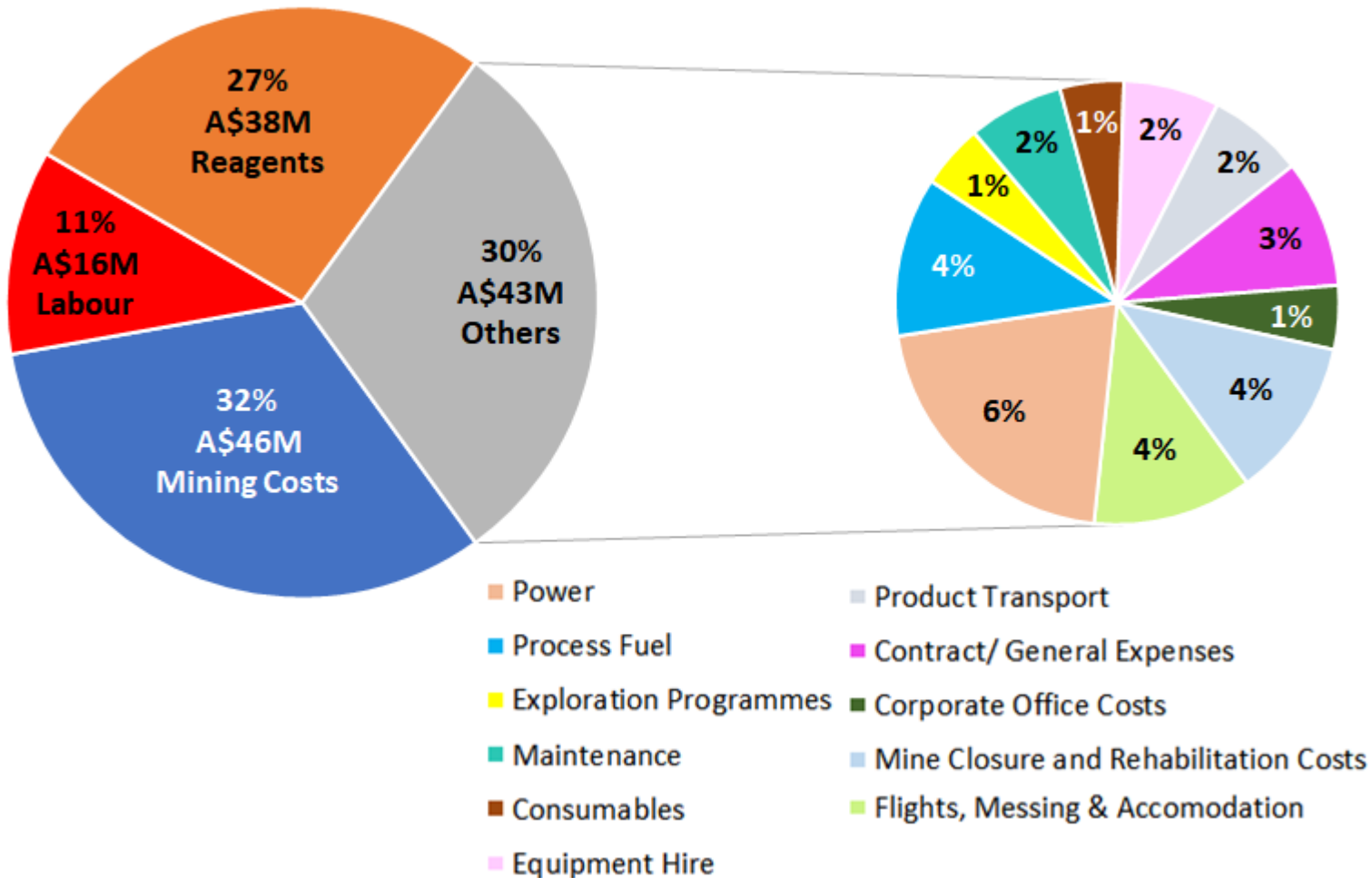


Cost Centre	A\$ Million	Cost Centre	A\$ Million
Process Plant	\$130.2	Non Process Infrastructure	\$105.1
Crushing and Screening	3.6	Mine Infrastructure	3.9
Grinding	14.1	TSF 1,2 and 3	19.5
Flotation	27.0	Evaporation Pond	0.3
Beneficiation	4.1	Accommodation Village	14.6
Hydrometallurgy	50.9	Roads	22.3
Hydrometallurgy Reagents	8.1	Air strip	1.6
Reagents Plants	19.7	Plant / Mining Buildings	9.8
Pipe Racks	2.7	Water Supply	9.2
		Power Supply	17.0
		ICT	0.9
Cost Centre	A\$ Million	Other Services	6.2
Indirect Costs	\$56.3		
Spares & First Fills	5.9	Contingency	43.7
EPCM Costs	37.6		
Owners Costs / Pre Production	7.9		
Vendor Support / Commissioning	3.6		
Project Insurances	1.2	Total Pre-Production CAPEX	\$335.3

DFS Operating Cost A\$17.06/kg of TREO

An improvement of 30% from PFS

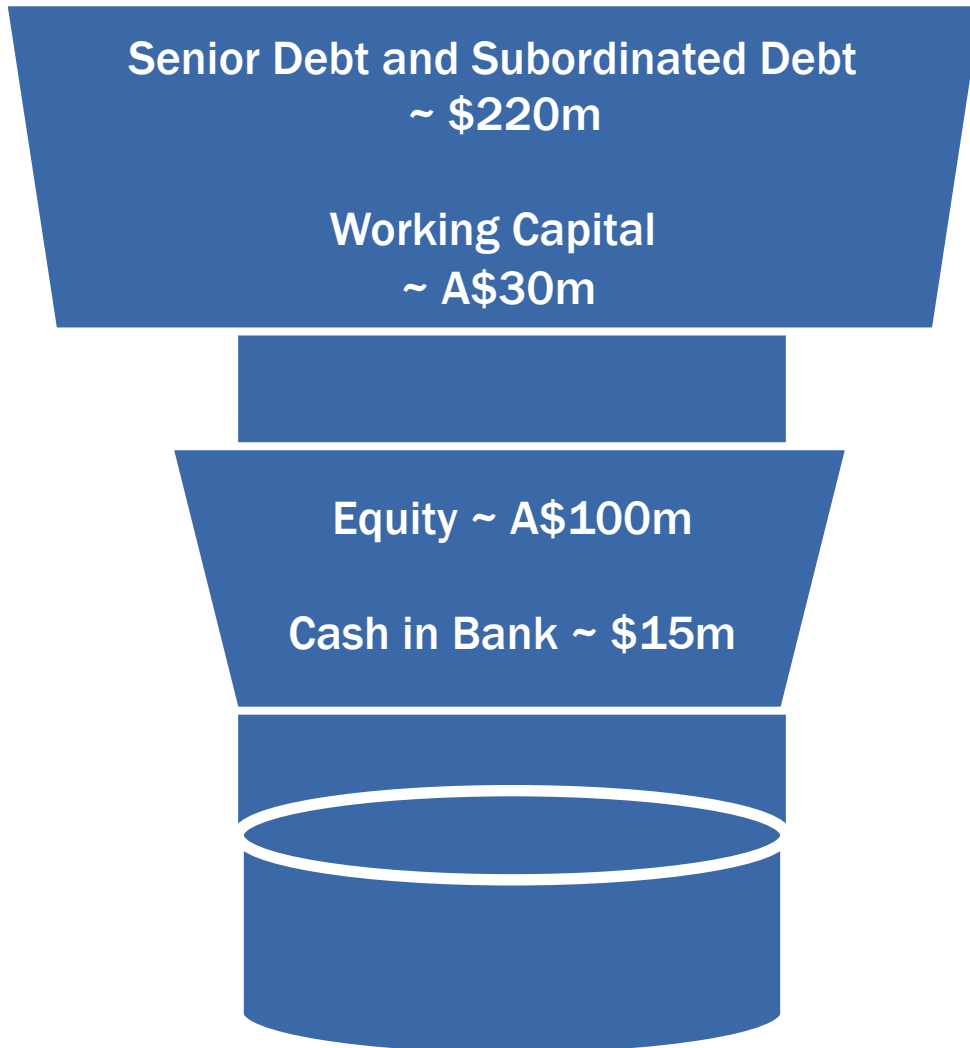
A\$142m / year split by cost category



- Processing Costs – significant gains achieved in metallurgical process resulted in lower reagent consumption and costs decrease by 47%
- Minor increases in General & Admin costs mainly reflecting corporate admin expenses
- Resource increase in OPEX – scope to further increase in future
- Mine closure costs included to LoM of 8 years – these will be diluted if LoM is extended beyond this period

Funding Programme

Commencing Q1 2018

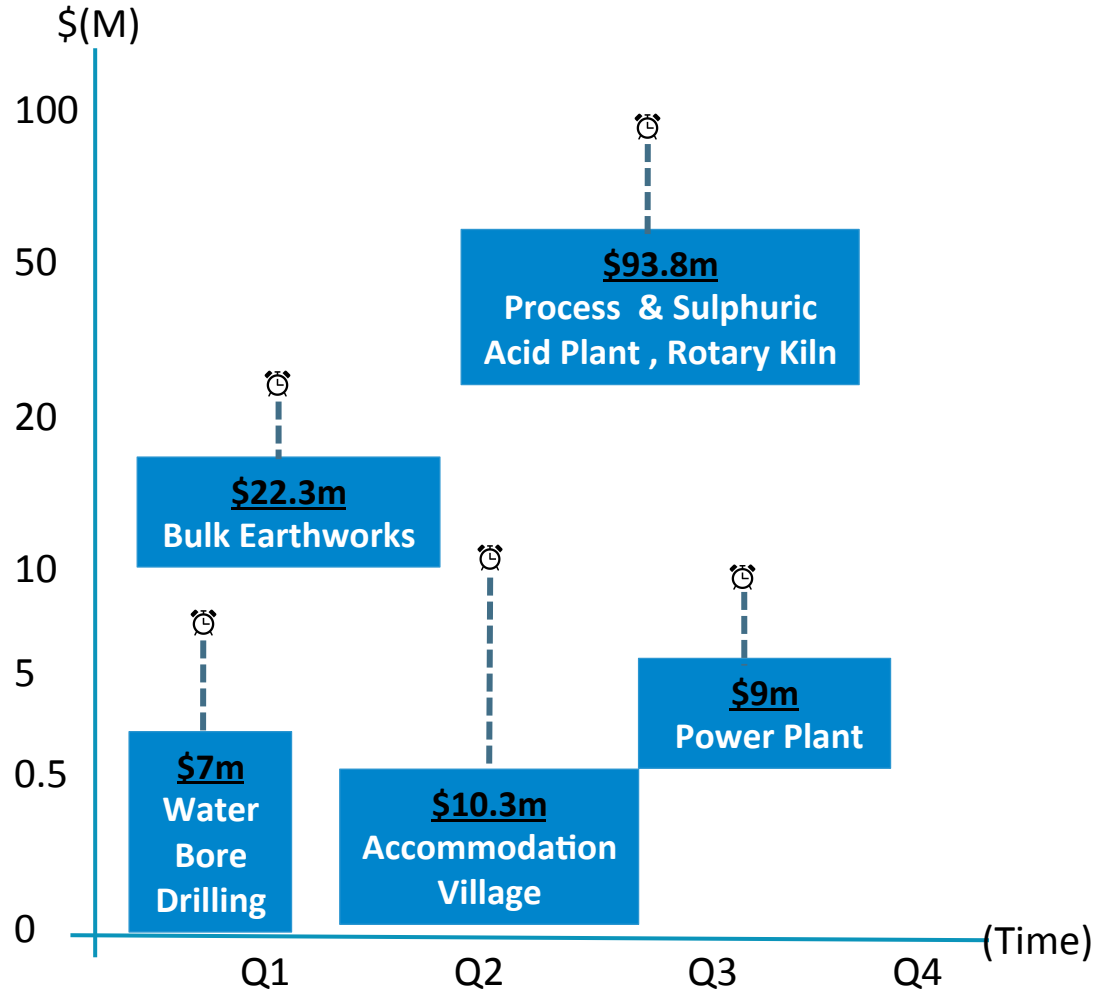


- Project Finance funding – 65% Debt : 35% Equity
- Senior & Subordinated Debt financing - potential sources:
 - ✓ Export credit insurance
 - ✓ Government loan guarantees
 - ✓ Federal Government Funded loan agencies (NAIF, CEFC)
 - ✓ Mezzanine Debt
 - ✓ Off take customer finance
- Working capital financing and trade lines
- Equity – Private Placement, SPP or Rights Issue
- Cash @ 31 Dec 2017 – A\$15m (zero debt)

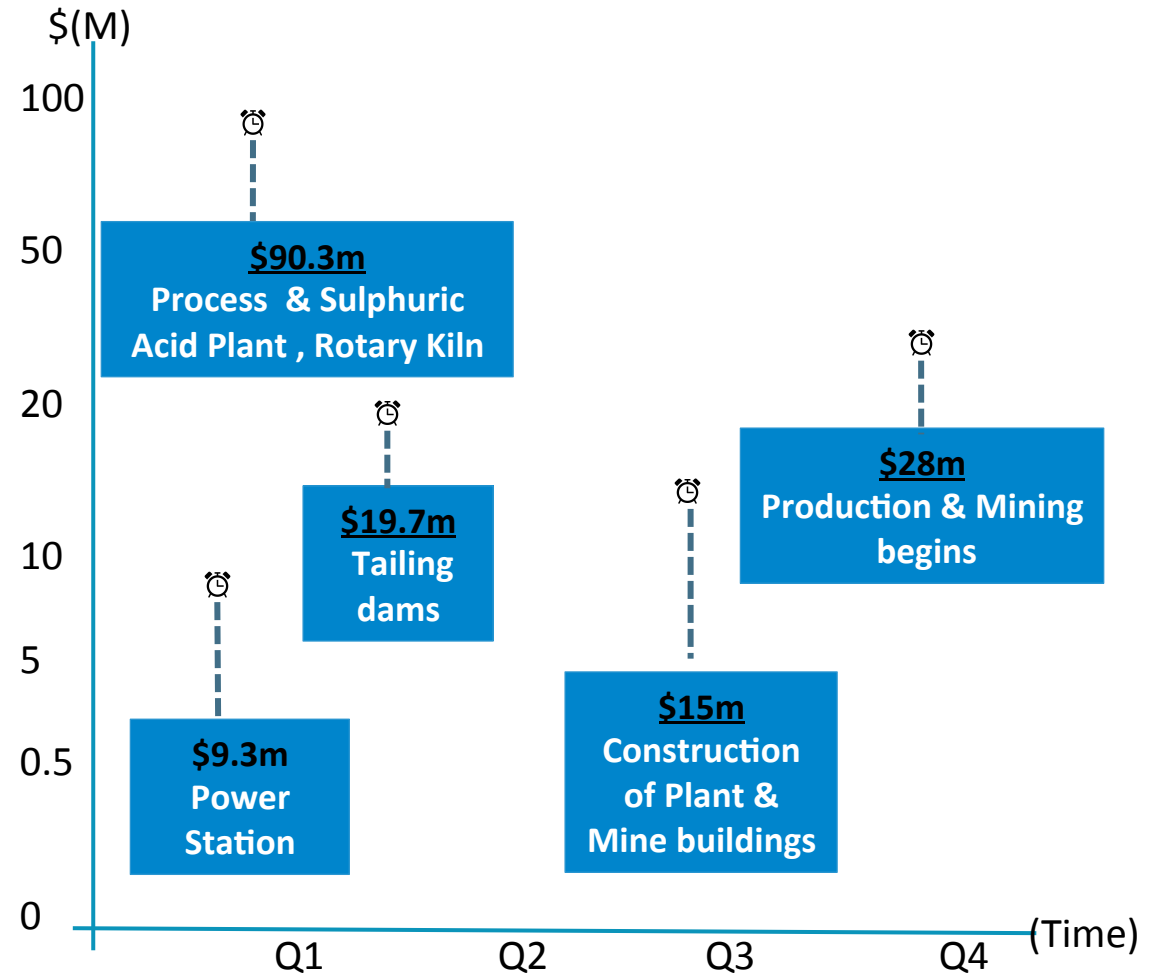


Milestones, Timeline & Expenditure

CAPEX Milestone & Drawdown 2018



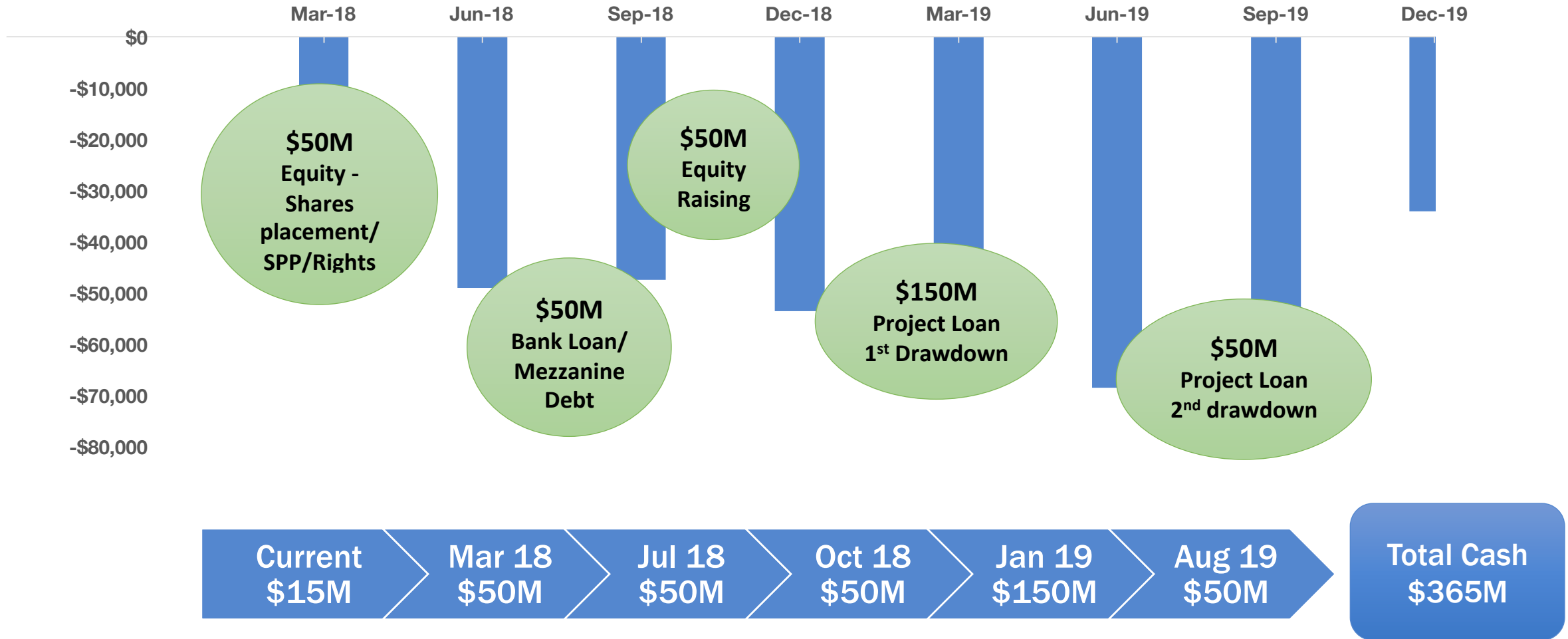
CAPEX Milestone & Drawdown 2019



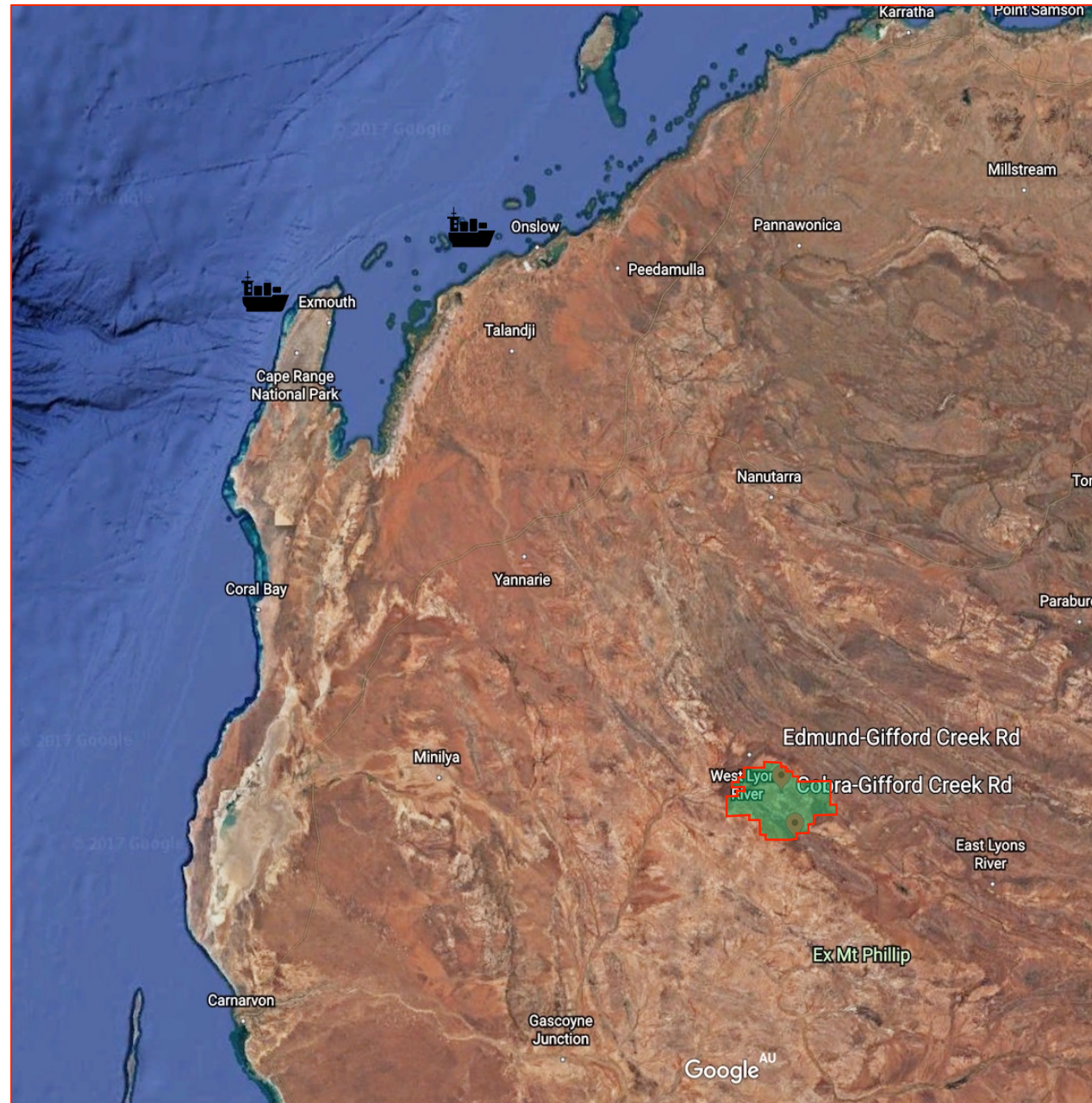
Projected Funding Drawdown

Schedule to determine funding requirement

HAS Projected Quarterly Drawdown and Proposed Cash Raising (A\$ '000s)



Yangibana Region

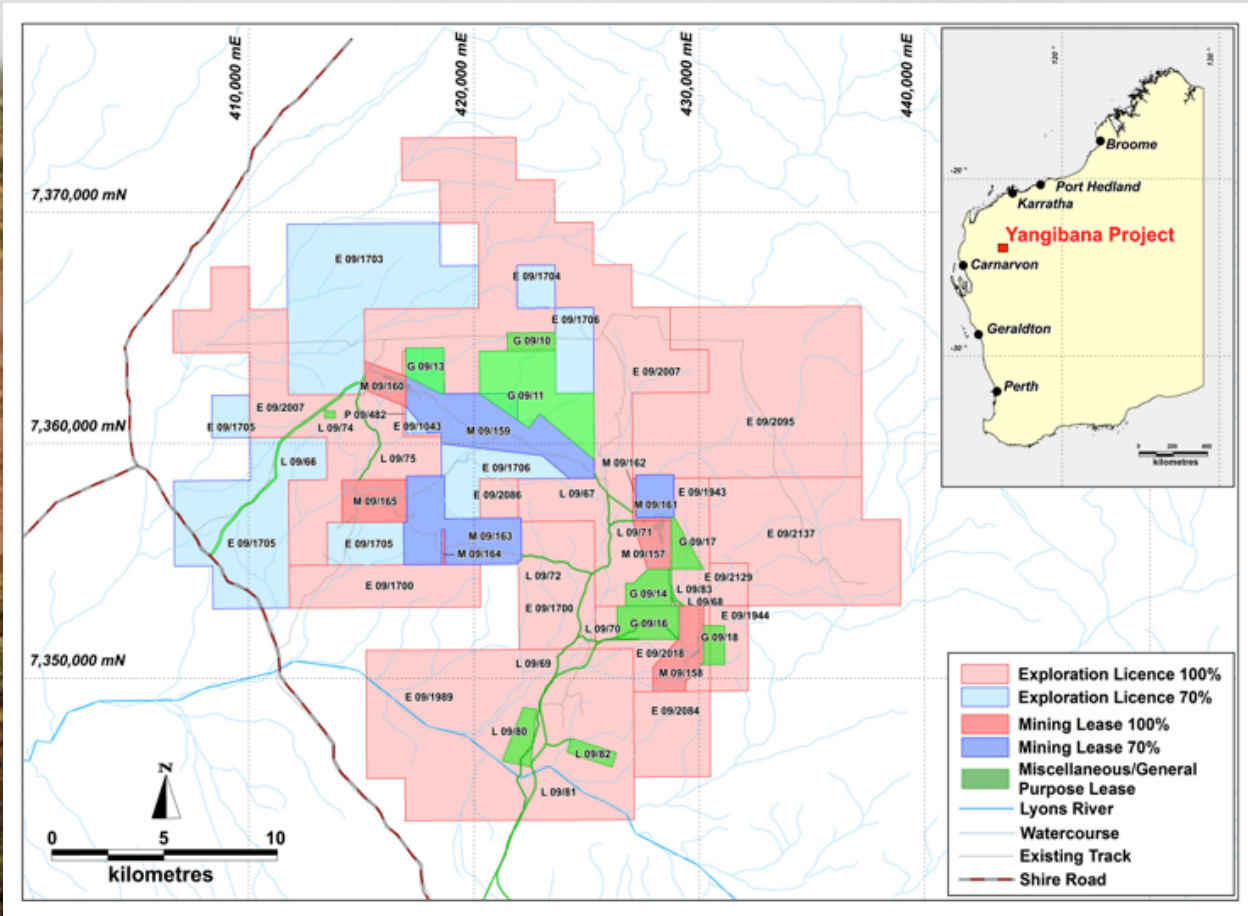


- Gascoyne Junction – good support from local community for mining at Yangibana
- Gifford Creek Airstrip – FIFO services
- Carnarvon – high unemployment hence availability of casual labour
- Geraldton, Onslow or Exmouth – ongoing economic assessment for inbound and outbound freight



Yangibana – Western Australia

AAA Sovereign Rating, Established Mining Region
Outcrops & level terrain, easy to mine



- Total Yangibana area ~ 650 km²
- 21 years Mining Leases Granted since March 2016 ~ 50 km²
- Native Title Agreement signed November 2017 covering all tenements
- Various Miscellaneous and General Purpose Leases granted supporting infrastructure
- Application lodged for permits to commence mine construction and production plant.*

JORC Resources

High Neodymium and Praseodymium content



- **Total Measured, Indicated and Inferred Resources now at 21m tonnes***
- In-ground ratio of Nd-Pr as % of TREO ranges from **34% (0.40%/1.18%) to as high as 57%** locally at Simon's Find deposit
- Nov 2017 updated JORC estimate to include Auer and Auer North deposits*
- Resources contained on Hastings 100% owned ground and smaller portion on 70% JV ground

Total Yangibana JORC Resources (rounded)

Category	Tonnes	Nd ₂ O ₃ +Pr ₆ O ₁₁	TREO	Nd ₂ O ₃	Pr ₆ O ₁₁
		%	%	ppm	ppm
Measured	3,900,000	0.42	1.19	3,372	851
Indicated	8,600,000	0.42	1.25	3,368	858
Inferred	8,400,000	0.36	1.09	2,829	740
TOTAL	21,000,000	0.40	1.17	3,152	809

Hastings 100% owned ground

Category	Tonnes	Nd ₂ O ₃ +Pr ₆ O ₁₁	TREO	Nd ₂ O ₃	Pr ₆ O ₁₁
		%	%	ppm	ppm
Measured	3,000,000	0.42	1.06	3,404	809
Indicated	6,600,000	0.41	1.09	3,324	794
Inferred	5,800,000	0.35	0.93	2,840	684
TOTAL	15,400,000	0.39	1.03	3,158	756

Hastings 70% owned JV ground

Category	Tonnes	Nd ₂ O ₃ +Pr ₆ O ₁₁	TREO	Nd ₂ O ₃	Pr ₆ O ₁₁
		%	%	ppm	ppm
Measured	900,000	0.43	1.64	3,258	997
Indicated	2,100,000	0.46	1.76	3,507	1,061
Inferred	2,700,000	0.37	1.42	2,806	860
TOTAL	5,600,000	0.41	1.58	3,134	955

* Hastings ASX release 22 Nov 2017;

Maiden JORC Ore Reserves

High Neodymium and Praseodymium content

JORC Probable Ore Reserves (rounded)

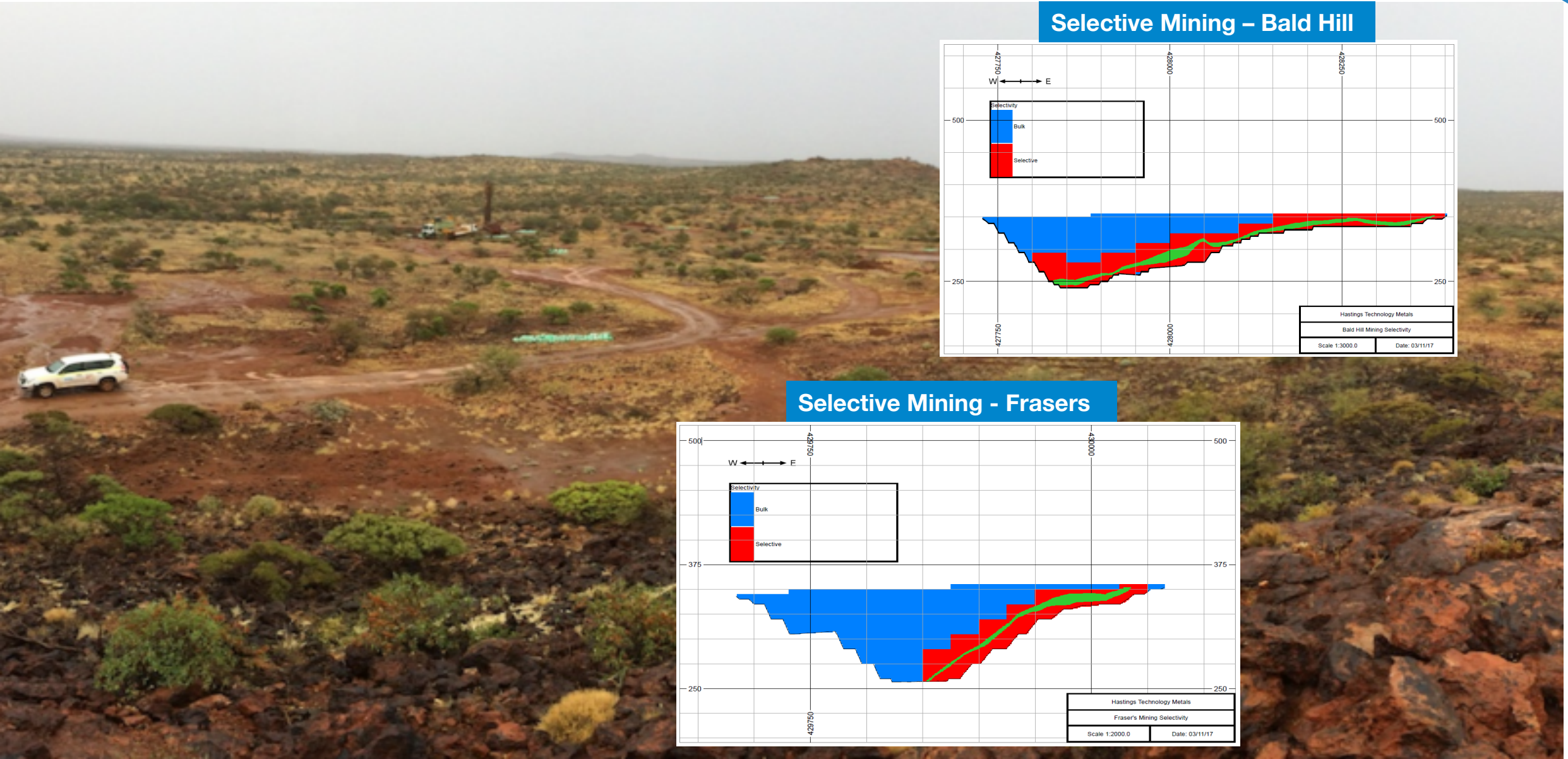
Deposit	Tonnes	Nd ₂ O ₃ +Pr ₆ O ₁₁	TREO	Nd ₂ O ₃	Pr ₆ O ₁₁
		%	%	ppm	ppm
Bald Hill	4,380,000	0.41	1.04	3,330	783
Fraser's	780,000	0.67	1.58	5,320	1,380
TOTAL	5,160,000	0.45	1.12	3,630	873

* Hastings ASX release 28 Nov 2017;

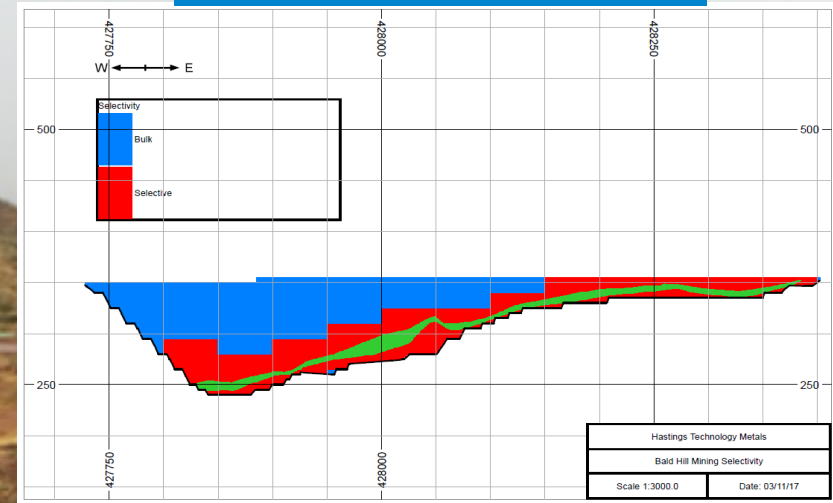
- **Total Probable Ore Reserve at 5.15m tonnes** supporting first 5.5 years of LoM and Additional Production Target for another 2.5 years
- Drilling programme in place to upgrade known resources to Reserves by 2019 to 10.0 m tonnes.

Favourable Terrain

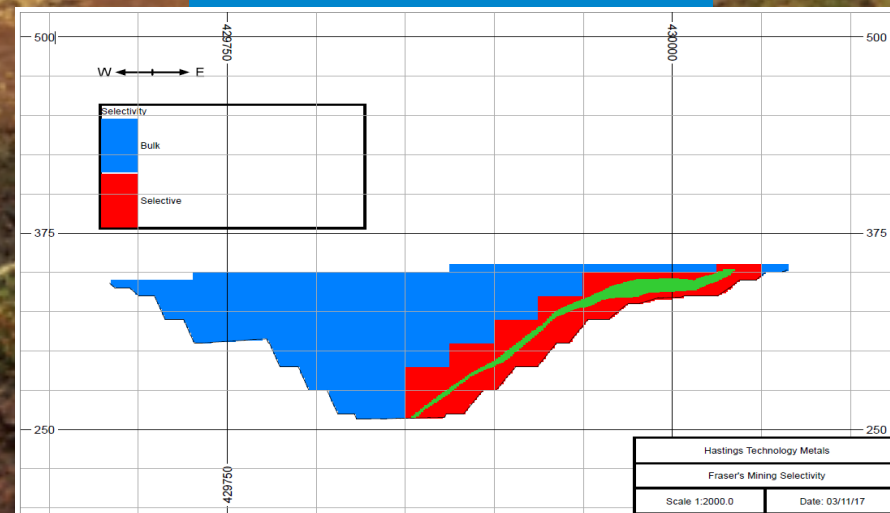
Start at outcrops, shallow open pit mining for 8yrs



Selective Mining – Bald Hill



Selective Mining - Frasers



Native Title Agreement signed



Agreement reached with Thiin-Mah Warriyangka, Tharrkari and Jiwarli

- Signed 9th November 2017
- < 1% royalty based on sales for the LoM
- Applicable to all RE mined & niobium
- Provision of jobs and training for the community



Yangibana Advantage – Highest Nd-Pr ratio

Comparison of REO Distribution & Basket Value Between Hastings and Major Light RE Producers

RE Oxide/TREO	Unit	Hastings	China		Outside of China	
			Baotou	Sichuan	Mt Weld	Mountain Pass
Lanthanum	%	9.99	25.94	36.50	25.16	33.22
Cerium	%	39.59	50.69	47.90	46.36	49.10
Praseodymium	%	8.01	5.15	4.10	5.38	4.30
Neodymium	%	33.80	15.90	10.00	18.79	12.00
Samarium	%	3.88	1.21	0.70	2.27	0.80
Europium	%	0.84	0.22	0.08	0.47	0.12
Gadolinium	%	1.80	0.39	0.23	0.85	0.17
Terbium	%	0.15	0.05	0.04	0.06	0.04
Dysprosium	%	0.50	0.11	0.06	0.16	0.07
Yttrium	%	1.14	0.25	0.31	0.45	0.10
Other	%	0.29	0.10	0.08	0.05	0.09
Economic Value Factor		1.88	1.00	0.73	1.14	0.81

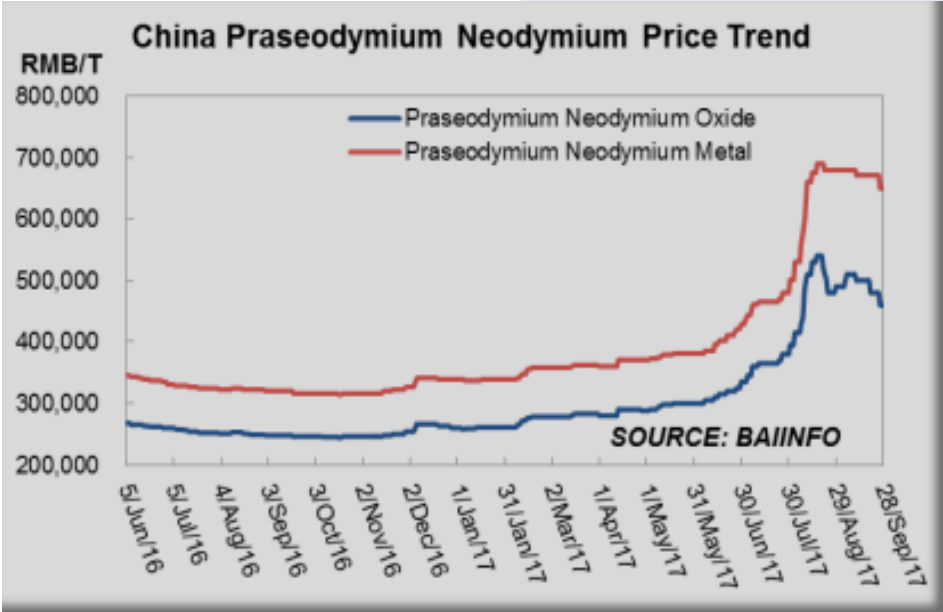
Basket Price USD/kg **30.50** **16.15** **11.75** **18.40** **13.10**

- Nd-Pr /TREO composition is validated by customers in the MREC
- Economic Value Factor calculated on individual % of REE in the ore body x REO prices
- Yangibana: high Nd-Pr content of 41%
- **Yangibana basket price @ USD30.50/kg (Oct 2017) used in DFS**
- Jan 2018 basket price is \$29.25

Spot Prices of Rare Earth Oxides (October 2017)

China F.o.B. Export prices 12-Oct-2017 (USD/kg) & YTD change

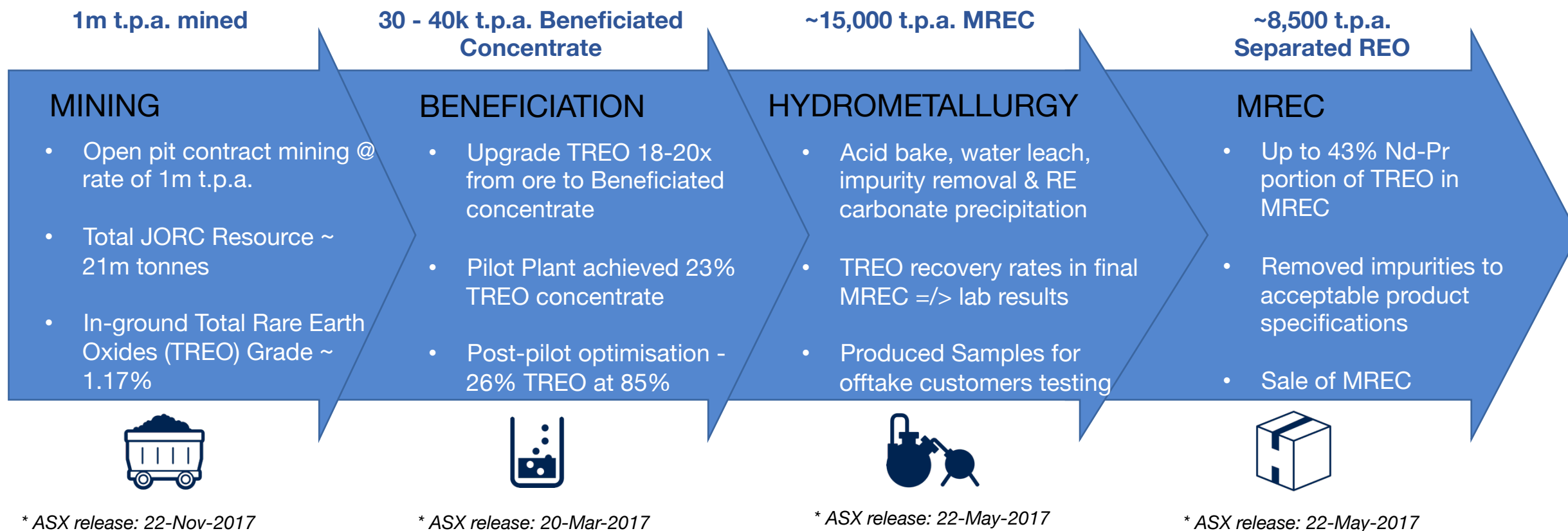
Lanthanum oxide	La ₂ O ₃	\$ 2.55	+11 %
Cerium oxide	CeO ₂	\$ 2.55	+50 %
Praseodymium oxide	Pr₆O₁₁	\$ 77	+59%
Neodymium oxide	Nd₂O₃	\$ 60	+56 %
Dysprosium oxide	Dy₂O₃	\$ 174	- 2 %
Terbium oxide	Tb₄O₇	\$ 509	+21 %
Samarium oxide	Sm ₂ O ₃	\$ 2.45	+51 %
Europium oxide	Eu ₂ O ₃	\$ 76	+21 %
Erbium oxide	Er ₂ O ₃	\$ 30	+23 %
Holmium oxide	Ho ₂ O ₃	\$ 67	+43 %
Lutetium oxide	Lu ₂ O ₃	\$ 722	+20 %
Yttrium oxide	Y ₂ O ₃	\$ 3.55	+ 11 %



The Yangibana Process and Product

The Steps from Mining to Mixed Rare Earth Carbonate (MREC)

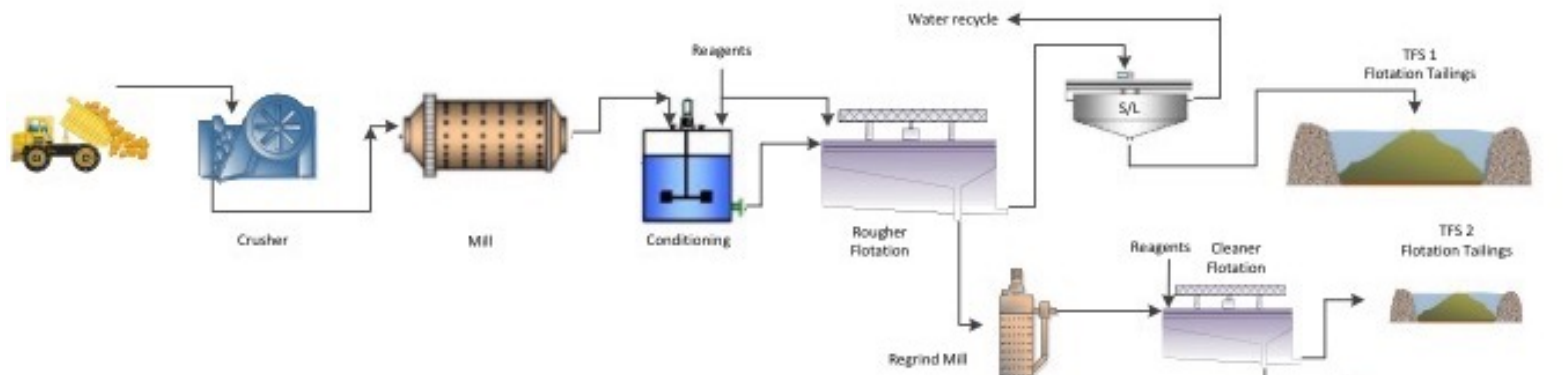
Successful Beneficiation and Hydrometallurgy pilot plan test-work proves simple and effective production process flow sheet.



* See Company ASX releases for additional information on all processes.

Yangibana Flowsheet

Pilot test work at ALS and ANSTO confirms production process

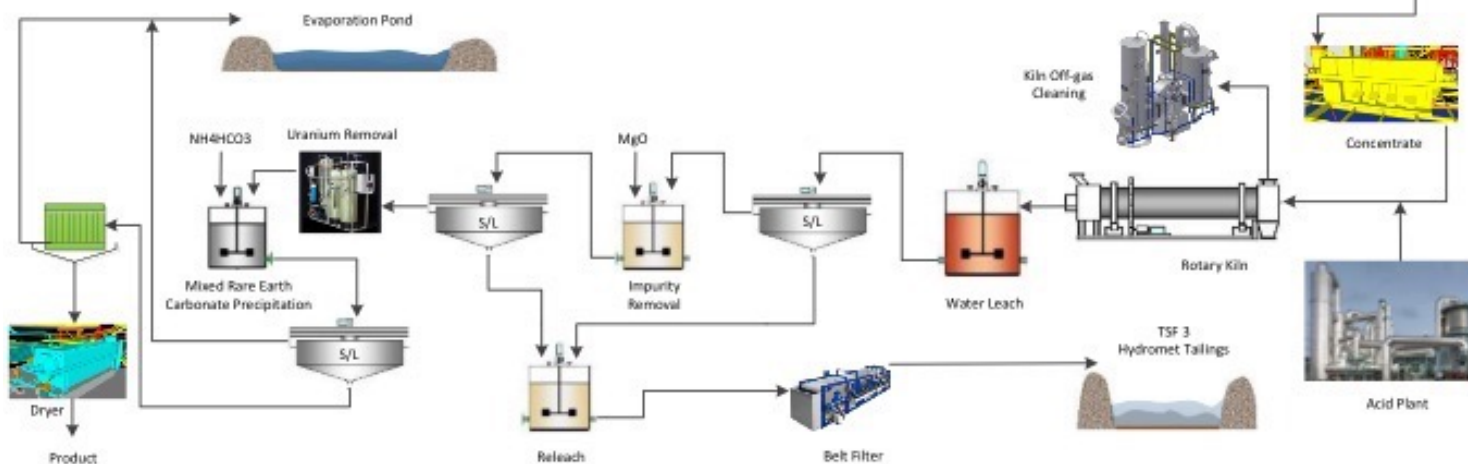


Flotation Pilot Plant Operation at ALS, Perth

- **Beneficiation** – 18-20x upgrade, high Nd-Pr recovery levels of 76%
- **Hydrometallurgy** – 41% Nd-Pr content in the Yangibana MREC



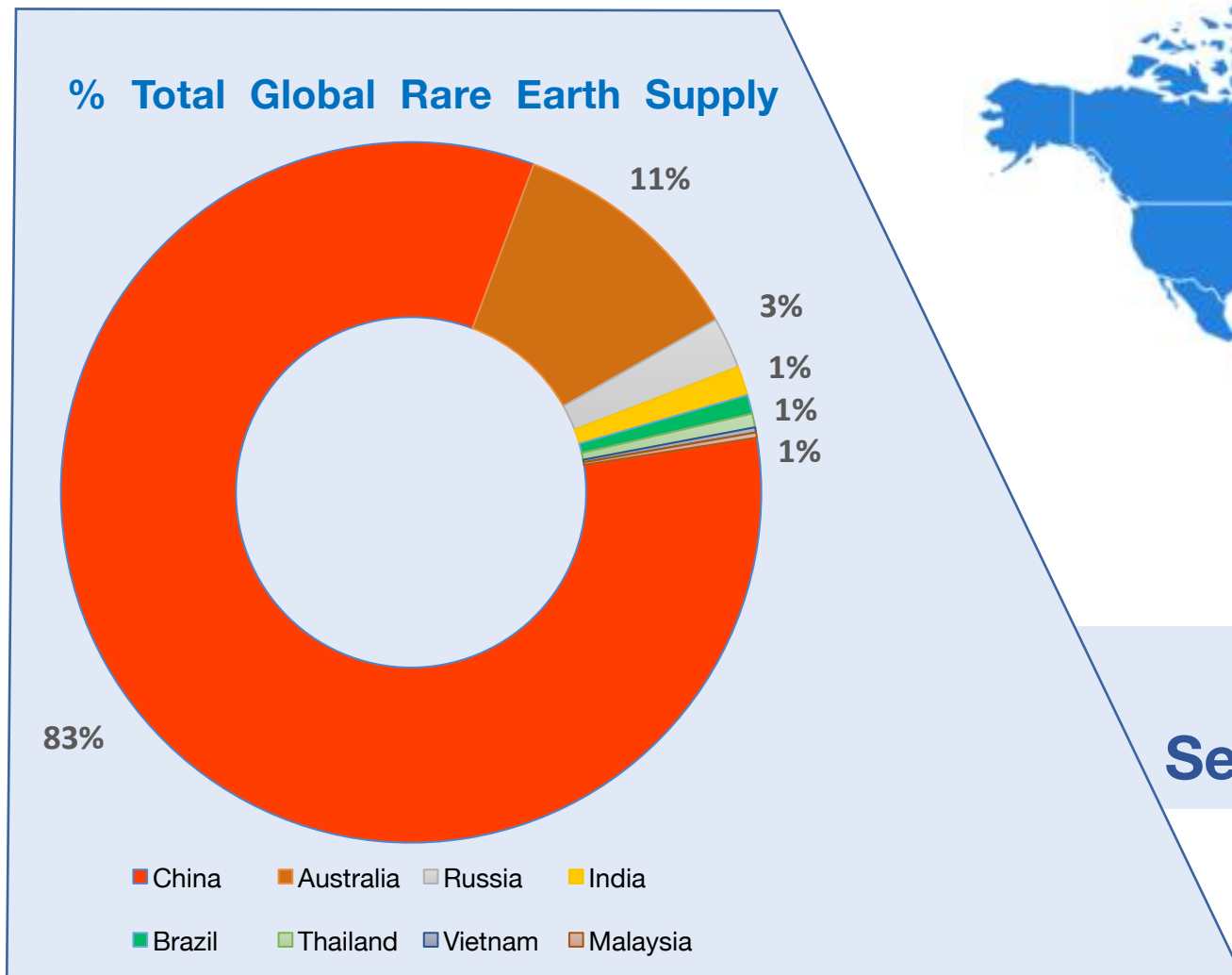
Final flotation concentrate from beneficiation pilot



Neutralisation & Precipitation Circuit – Hydromet - ANSTO

Global Rare Earth Supply 2016

Supply diversification increasingly strategic



HASTINGS Second source Supply outside of China

2016 Global Supply 126,000 MT
Excluding Illegal Supply
China aggressively targeting illegal mining in 2017 – expected to reduce global supply.

Major Growth Applications

Demand drivers for permanent magnets from new technologies



Wind turbines

GWEC projects wind capacity to reach 2,110 GW – 5X increase from today.
est. ~ 10,000 to 15,000 t.p.a. additional Nd-Pr*



Electric Vehicles

Policy changes, Manufacturer EV Targets
est. ~ 10,000 to 15,000 t.p.a. additional Nd-Pr



Magnetocaloric Refrigeration

30% to 50% more energy efficient & zero CFC usage
NdPr usage ~ 1kg per unit
Additional demand 6,300 tonnes p.a. by 2025

Experienced Directors and Management Team



Guy Robertson

**Finance Director &
Company Secretary**

- 30+ years CFO experience
- CFO for various ASX listed junior mining companies
- Senior finance executive in Jardine Matheson Group in Hong Kong and Australia including Jardine Lloyd Thompson, Colliers Jardine, and Franklins Limited



Charles Lew

Executive Chairman

- Corporate Finance Director HG Asia Securities 1990 - 1997
- MD of ABN Amro Investment Bank Singapore 1997 - 2000
- Independent Director of RHB Banking Group 2004 - 2016
- 30+ years experience in investment banking in London (HSBC & Robert Fleming) and in Singapore
- Private investor and entrepreneur in F&B, real estate, financial services, etc.



**Jean Claude
Steinmetz**

**Non-Exec. Director /
Commercial Director**

- Previously Chief Operating Officer for Lynas Corporation
- 25+ years Involved in the chemical industry with Rhodia and General Electric
- Chairman of the Auto Plastic and Innovative Materials Committee of Sino-EU Chemical Manufacturers Association



Aris Stamoulis

Executive Director /

Director Corporate Finance

- 20+ years experience in banking & finance
- Worked for Deutsche Bank and Morgan Stanley in various roles in London, Singapore and Hong Kong
- Focussed mainly on debt capital markets and derivatives

Management Team

In depth experience and specialised skills



Andy Border

**General Manager
Exploration**

- 40+ years experience as a geologist
- Rare earths, copper, gold and industrial minerals
- Recent roles include Exploration Manager, COO and MD of a number of ASX-listed companies with projects in Australia and elsewhere



Pit Wah Chung

Chief Financial Officer

- 18+ years experience in financial reporting and tax
- Regional Financial Controller of Lifestyle Investment Group. CFO of Muddy Murphy's Holdings and Breadtalk Group Ltd
- Chartered Accountant of Singapore & fellow member of The Association of Chartered Certified Accountants (ACCA)



Viv Roberts

**Director of Mining
Operations**

- 30+ years mine operations experience
- 15 years senior leadership roles including GM Operations for Roy Hill Iron Ore Project, GM at Fortescue's Christmas Creek mine, General Manager for Thiess Mining & GM for BC Iron
- Member of AusIMM, WA Mining Club and AICD



Hannes Zandberg

Project Director

- 30 years experience in mining, metallurgy, chemical refinery, infrastructure, power generation and advanced control systems; 10 years in operations and 20 years in projects
- Area Manager – SNC-Lavalin Project Services, Project Director - Dundee Precious Metals, Engineering Manager – Moly Mines



Robin Zhang

Process Engineering Mgr

- 20+ years experience in R&D, project engineering, plant commissioning & operations
- 8 years at Lynas Corporation - Senior Technical Services & Project Development Manager
- 11 years with Gansu Rare Earth Group, China - Deputy Director of Technical Centre



Dr Kwan Wong

KYSPYmet Mineral Processing Consultants - Flotation Specialist

- 50+ years practicing metallurgist with extensive flotation treatment experience in rare earth
- Evaluation of beneficiation flotation test work, plant performance & commissioning; pilot plant test programme design and execution
- Specialist speaker in flotation workshops.
- Worked on 9 REO oxide development projects in Australian and overseas



Narelle Marriott

Principal Engineer – Beneficiation

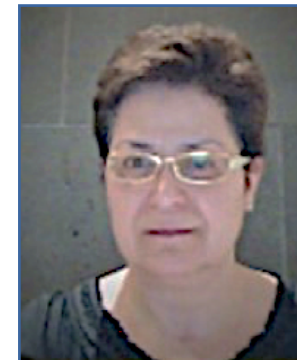
- 14+ years experience in the minerals processing and mining industry
- Experienced in process and flowsheet development for beneficiation plants
- Worked on 5 pilot plant operations in comminution and flotation of nickel, copper, uranium, iron ore and RE industries



Valerie Quay

Legal Counsel

- Trained & Qualified Lawyer, Barrister at Law, Middle Temple UK
- 4 years at Herbert Smith, London
- Focus area and experience in corporate and commercial law
- 3 years Management & Strategy consulting at McKinsey & Co, London



Dr Nursen Guresin

Senior Metallurgist

- 30+ years in mining industry
- Expertise in physical (crushing, grinding concentration processes) and chemical (hydrometallurgy, pyro-metallurgy electrometallurgy) ore processing
- Experienced in engineering studies metallurgical test work, site work (optimisation, trouble shooting, trials), audits, due diligence, Competent Person and NI 43-101 Reports, consultancy, research and lecturing

Strong level of interest and demand for Yangibana high Nd-Pr MREC

- **Baotou Sky Rock Rare Earth New Material Co. Ltd** – 2,500 tonnes per annum (*1 Aug 2017*)
 - Sky Rock produces high tolerance NdFeB permanent magnets. Main products include
 - Sintered Neodymium Magnets
 - Sintered Samarium Cobalt Magnets

- **China Rare Earth Holdings Ltd** – 2,000 tonnes per annum (*1 Sept 2017*)
 - CREH started business in 1987 and listed on HKEX in 1999
 - Established manufacturer of rare earth derived and refractory products

- **Qiandong Rare Earth Group (GQD)** – 1,500 tonnes per annum (*13 Sept 2017*)
 - GQD founded in 1988
 - Through 11 subsidiary companies involved in all parts of the rare earth product supply chain.

- ✓ Selling price will be set at average of 3 months market prices prior to shipment

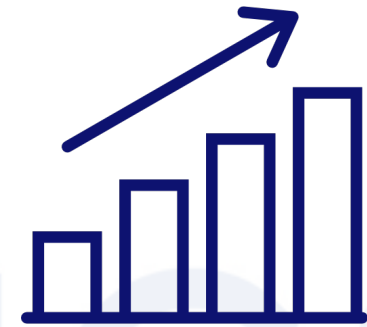
- ✓ On going negotiations for off-take agreements with Germans and Japanese customers



- Experienced management team with rare earth production experience
- Definitive Feasibility Study (DFS) completed
- Off-take MOUs signed with 3 Chinese producers
- Native Title Agreement signed
- Mining Lease granted for 21 yrs since March 2016



- MREC with high NdPr content
- DFS basket price: USD30.50/kg (Oct 2017)
- Mine construction 1Q 2018
Production Q4 2019
- Probable Ore Reserves 5.15m tonnes
- JORC Resource Estimate currently @ 21.0m tonnes



- Market Cap A\$230m
- NPV A\$466m
- IRR 78%
- EBITDA payback 2.3yrs
- Cash in hand A\$15m
- Zero debt
- EVs exponential growth of 5x from 2020 to 2040

Thank you.

Q & A

