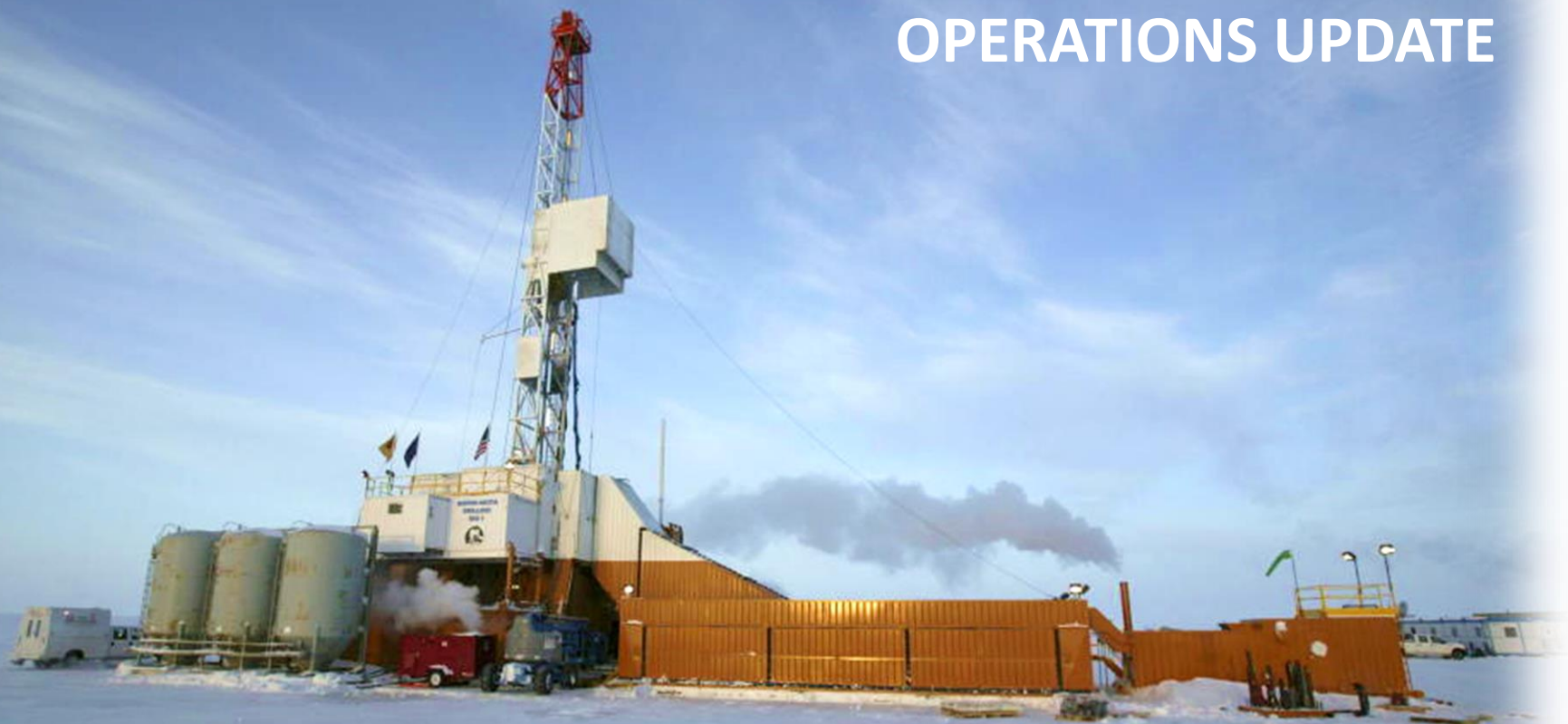


PROJECT ICEWINE

NORTH SLOPE OF ALASKA



PROJECT ICEWINE FEBRUARY 2018 OPERATIONS UPDATE



Doyon Arctic Fox
DOYON DRILLING, INC.

The information contained in these slides has been prepared by 88 Energy Limited (the “Company”). The information contained in these slides, the presentation made to you verbally and any other information provided to you (in writing or otherwise) in connection with the Company and its business (the “Presentation Materials”) is subject to updating, completion, revision, verification and amendment without notice which may result in material changes. The Company, in its sole discretion, reserves the right to amend or supplement these Presentation Materials at any time.

The Presentation Materials have not been approved by the London Stock Exchange plc or by any authority which could be a competent authority for the purposes of the Prospectus Directive (Directive 2003/71/EC). The Presentation Materials are for information purposes only and do not constitute or form part of any offer for sale or solicitation of any offer to buy or subscribe for any securities nor shall they nor any part of them form the basis of or be relied on in connection with, or act as any inducement to enter into, any contract, transaction or commitment whatsoever. The Presentation Materials contain only a synopsis of more detailed information published in relation to the matters described therein and accordingly no reliance may be placed for any purpose whatsoever on the sufficiency of such information or on the completeness, accuracy or fairness of such information and to do so could potentially expose you to a significant risk of losing all of the property invested by you or the incurring by you of additional liability.

No undertaking, representation, warranty or other assurance, express or implied, is made or given by or on behalf of the Company, the Company’s nominated adviser and UK broker, Cenkos Securities Plc (“Company Adviser”), or any of their respective affiliates or any of such persons’ directors, officers, partners, employees, agents or advisers or any other person as to the adequacy, accuracy, completeness or reasonableness of the information or opinions contained in the Presentation Materials and no responsibility or liability is accepted by any of them for any such information or opinions or for any errors, omissions, mis-statements, negligence or otherwise for any other communication written or otherwise.

No Company Adviser has approved (for the purposes of section 21 of the Financial Services and Markets Act 2000 (“FSMA”)) the contents of, or any part of, the Presentation Materials. The Presentation Materials are only being issued to and directed at and may only be received by persons who: (a) in the UK: (i) have professional experience in matters relating to investments and who fall within the exemptions contained in Articles 19 or 49 of the Financial Services and Markets Act 2000 (Financial Promotion) Order 2005, as amended (investment professionals and high net worth companies, unincorporated associations etc.) and (ii) are a “qualified investor” within the meaning of Section 86(7) of the FSMA; or (b) are otherwise permitted by the laws of the jurisdiction in which they are resident to receive them. It is a condition of your receiving the Presentation Materials that you fall within one of the categories of persons described above and you warrant to the Company and each Company Adviser that: (a) you fall within one of the categories of persons described above; (b) you have read, agree to and will comply with the terms of this disclaimer; and (c) you will conduct your own analyses or other verification of the information set out in the Presentation Materials and will bear the responsibility for all or any costs incurred in doing so. Persons who do not fall within one of the categories of persons described above should not rely on the Presentation Materials nor take any action upon them, but should return them immediately to the Company.

It is a condition of your receiving these Presentation Materials that you fall within, and you warrant and undertake to the Company that you are either an “accredited investor” (as defined in Rule 501 of the U.S. Securities Act of 1933, as amended (the “Securities Act”)) or you are located outside of the United States (as defined in Regulation S promulgated under the Securities Act).

The distribution of the Presentation Materials in certain jurisdictions may be restricted by law and therefore persons into whose possession the Presentation Materials come should inform themselves about and observe such restrictions. In particular, neither the Presentation Materials nor any copy of them nor any information contained in them may be taken or transmitted into the United States, Canada, Japan, or the Republic of South Africa, except in compliance with applicable securities laws.

Disclaimer (cont.)



Any failure to comply with this restriction may constitute a violation of securities laws. No action has been or will be taken by the Company that would permit a public offer of its securities in any jurisdiction in which action for that purpose is required. No offers of securities or distribution of the Presentation Materials may be made in or from any jurisdiction except in circumstances which will not impose any obligation on the Company or any of its advisers to take action.

The Presentation Materials include certain forward-looking statements, estimates and forecasts with respect to the anticipated future performance of the Company which reflect the Company's expectations regarding future plans and intentions, growth, results of operations, performance and business prospects and opportunities. Such forward-looking statements, estimates and forecasts reflect various assumptions made by the management of the Company and their current beliefs, which may or may not prove to be correct. A number of factors could cause actual results to differ materially from the potential results discussed in such forward-looking statements, estimates and forecasts including, changes in general economic and market conditions, changes in the regulatory environment, business and operational risks and other risk factors. Although such forward-looking statements, estimates and forecasts are based upon what the management of the Company believe to be reasonable assumptions, no guarantee can be given that actual results will be consistent with such forward-looking statements, estimates and forecasts. Prospective investors should not place undue reliance on such forward-looking statements, estimates and forecasts. Such forward-looking statements, estimates and forecasts are made as of the date of these Presentation Materials and the Company does not assume any obligation to update or revise them to reflect new information, events or circumstances. Past performance is not a guide to future performance.

The Presentation Materials do not purport to contain all the information that a prospective investor may require. Prospective investors should conduct their own independent investigation and analysis of the Company and the information contained in these Presentation Materials and are advised to seek their own professional advice on the legal, financial and taxation consequences of making an investment in the Company. The contents of these Presentation Materials are not to be construed as legal, business, investment or tax advice.

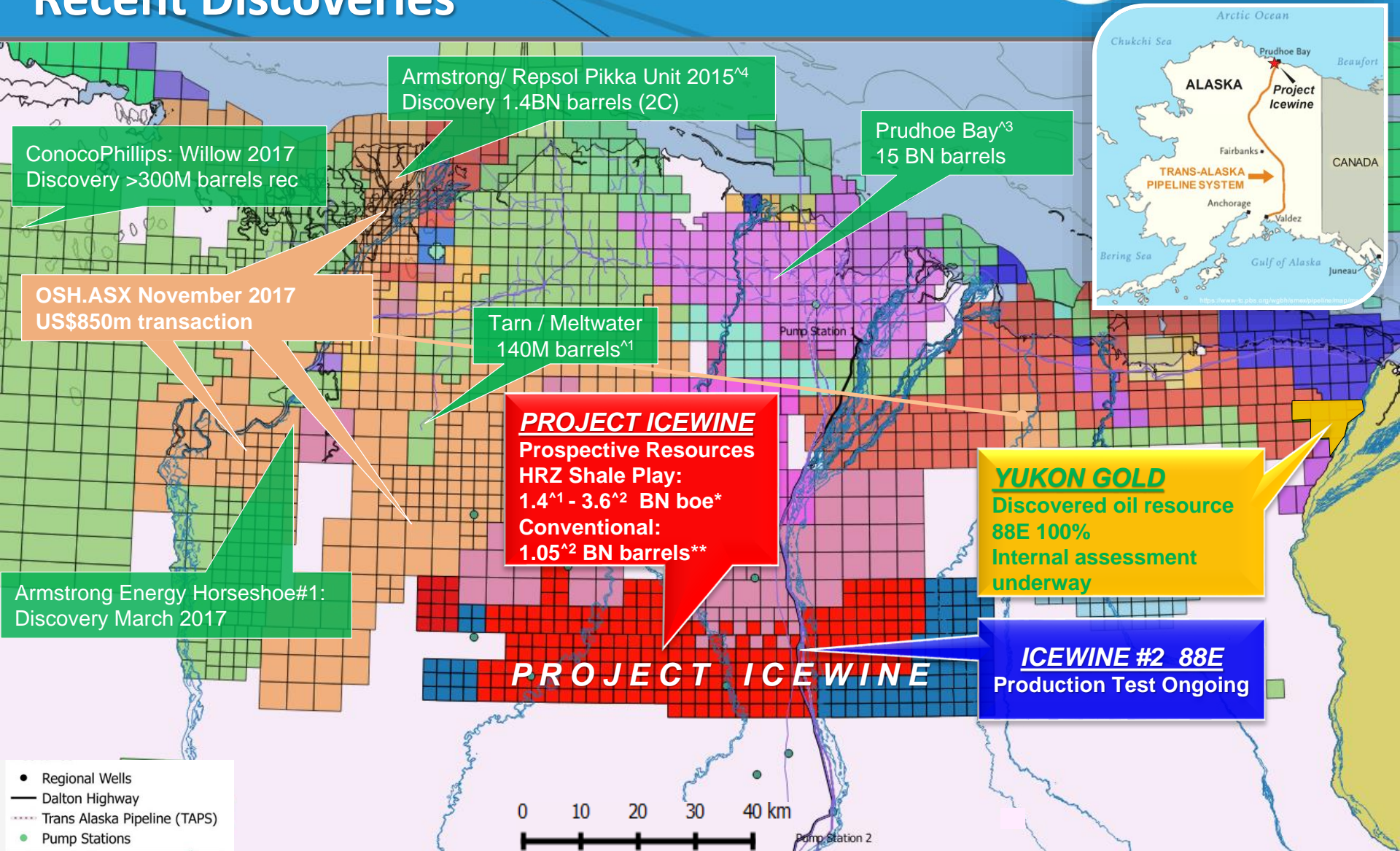
Cenkos Securities Plc which is authorised and regulated in the United Kingdom by the Financial Conduct Authority, is acting for the Company and no-one else in connection with the contents of this document and will not be responsible to anyone other than the Company for providing the protections afforded to the clients of Cenkos Securities Plc or for affording advice in relation the contents of this document or any matters referred to herein. Nothing in this paragraph shall serve to exclude or limit any responsibilities which Cenkos Securities Plc may have under FSMA or the regulatory regime established thereunder. Cenkos Securities Plc is not making any representation or warranty, express or implied, as to the contents of this document.

Pursuant to the requirements of the ASX Listing Rules Chapter 5 and the AIM Rules for Companies, the technical information and resource reporting contained in this presentation are based on, and fairly represent, information and supporting documentation prepared by, or under the supervision of, Mr Brent Villemarette, who is a Non Executive Director of the Company. It has been produced for the Company, and at its request, for adoption by the Directors. Mr Villemarette has more than 35 years experience in the petroleum industry and is a qualified Reservoir Engineer who has sufficient experience that is relevant to the style and nature of the oil prospects under consideration and to the activities discussed in this document. He has consented to the inclusion of the petroleum prospective resource estimates prepared by DeGolyer & MacNaughton (as of 31 December 2015) and supporting information being included in this announcement in the form and context in which they are presented. His academic qualifications and industry memberships appear on the Company's website and both comply with the criteria for "Competence" under clauses 18-21 of the Valmin Code 2005. Terminology and standards adopted by the Society of Petroleum Engineers "Petroleum Resources Management System" have been applied in producing this document.

The presentation materials are being furnished solely in reliance on applicable exemptions from the registration requirements under the Securities Act. The securities of the Company have not and will not be registered under the Securities Act or any State Securities laws, and may not be offered or sold within the United States unless an exemption from the registration requirements of the Securities Act is available. Accordingly, any offer or sale of securities in the Company will only be offered or sold (i) within the United States only to institutional accredited investors (as defined in Rule 501 (a)(1),(2),(3) or (7) of the Securities Act) in private placement transactions not involving a public offering and (ii) outside the United States in offshore transactions in accordance with Regulation S. Securities of the Company may not be resold unless the offer and sale is registered under the Securities Act or an exemption from registration is available. Neither the U.S. Securities and Exchange Commission nor any State or Foreign Regulatory Authority has approved the securities of the Company to be offered or the terms of such offering or passed upon the accuracy or adequacy of the Presentation Materials. Any representation to the contrary is a criminal offence.

North Slope Oil & Gas Activity 2017

Recent Discoveries



ConocoPhillips: Willow 2017
Discovery >300M barrels rec

Armstrong/ Repsol Pikka Unit 2015^{^4}
Discovery 1.4BN barrels (2C)

Prudhoe Bay^{^3}
15 BN barrels

OSH.ASX November 2017
US\$850m transaction

Tarn / Meltwater
140M barrels^{^1}

PROJECT ICEWINE
Prospective Resources
HRZ Shale Play:
1.4^{^1} - 3.6^{^2} BN boe*
Conventional:
1.05^{^2} BN barrels**

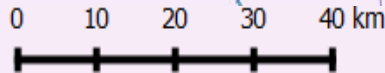
YUKON GOLD
Discovered oil resource
88E 100%
Internal assessment
underway

Armstrong Energy Horseshoe#1:
Discovery March 2017

ICEWINE #2 88E
Production Test Ongoing

PROJECT ICEWINE

- Regional Wells
- Dalton Highway
- Trans Alaska Pipeline (TAPS)
- Pump Stations



* Gross mean prospective recoverable resource, refer ASX/AIM announcement 6/04/16 (271,000 acres)

** Net mean prospective recoverable resource, refer slide 16

^{^1} Independent Est., ^{^2} Internal Est., ^{^3} Source USGS 2005, ^{^4} Armstrong 2016

- 88E – 266,943 net acres WI: 77.9% (14,693 net acres subject to formal award)
- 88E – 34,339 net acres WI: 25.9%
- 88E – 15,520 net acres WI: 100% (subject to formal award)

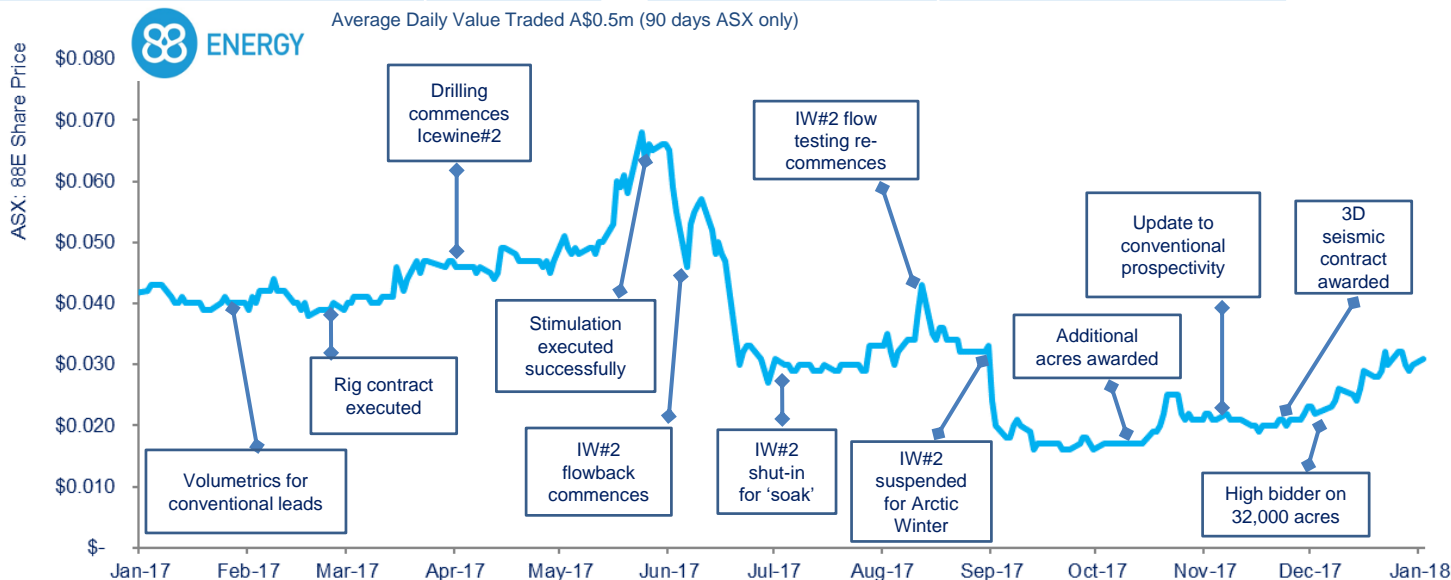
Corporate Snapshot

88 Energy Limited (ASX, AIM: 88E)	Current
Shares on Issue	4,661m
Options on Issue	756m
Market Capitalisation (A\$0.03)	A\$140m
Cash (31 Dec 17 unaudited)	A\$14.0m / US\$11.0m
Board and Top 20	58%
Project Icewine Operator, Working Interest	~63%
Yukon Gold Operator, Working Interest	100%

88E Board and Management	
David Wall	Managing Director
Michael Evans	Non-Exec Chairman
Brent Villemarette	Non-Executive Director
Dr Stephen Staley	Non-Executive Director
Ashley Gilbert	Chief Financial Officer
Erik Opstad	General Manager, Alaska Operations
Elizabeth Pattillo	General Manager, Exploration

Burgundy Xploration JV Partner

Paul M. Basinski, Founder & CEO
Michael R. McFarlane, President
Closely Held Texas LLC
Special Purpose Vehicle for Project Icewine
Project Icewine Working Interest ~37%



Activity Planned

- Icewine#2 ongoing production test – April / May 2018
- 3D seismic to delineate conventional drilling candidates ~February 2018
- Assess prospectivity at Yukon Gold

Large, Strategic Acreage Position – Vast Majority of HRZ Play now Captured

- Joint Venture controls 475,000 gross acres (~301,000 acres net to 88E, Operator*)
- Strategically located on infrastructure – all year access road / pipeline

Primary Target: HRZ Liquids Rich Resource Play – 1.0-2.6 billion barrels liquids**

- Phase I: De-risked by core/log analysis from Icewine#1 (2015/2016)
- Phase II: Stimulated successfully in Icewine#2 with flow-back clean up ongoing
- Preliminary results encouraging, but not definitive, with only 20% frac fluid recovered
- April/ May 2018: Finalise flow testing with optimised completion and artificial lift

Large Conventional Leads Identified – 1.05 billion barrels#

- 2,350 line kilometers of modern/vintage 2D seismic – interpretation complete
- Multiple leads now mapped, coincident with reservoir and oil shows in regional wells
- ~ 500km² 3D seismic contracted for February 2018 to delineate optimal drilling locations
- Up to 9 conventional wells planned by other operators in 1H2018

Future Expenditure Post Icewine#2 / 3D Seismic to be Funded via Farm-out

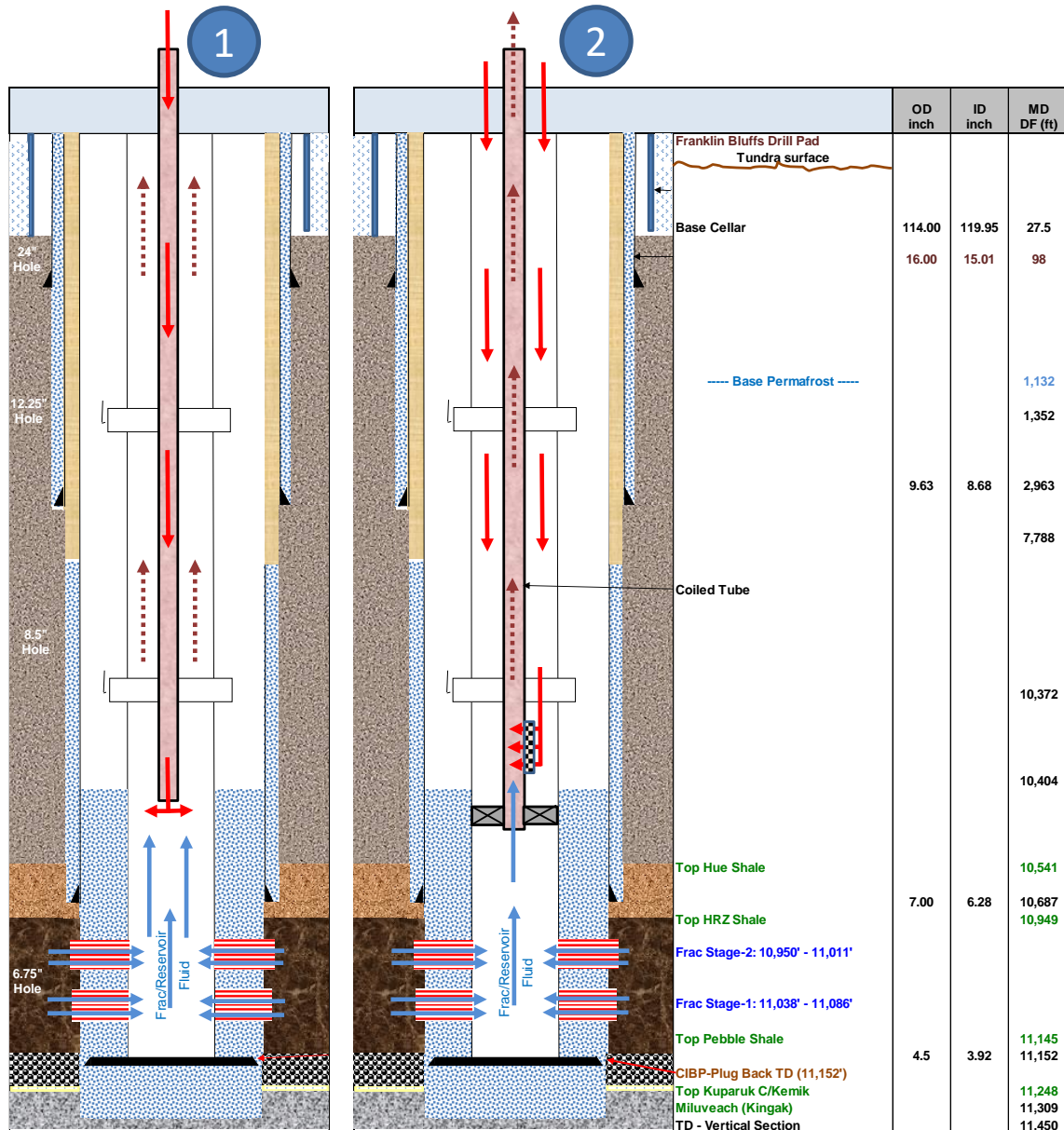
- Significant value added to assets plus improving oil price -> time is right to deal

* Operator on 342,000 gross acres, JV Partner operates the remaining 133,000 gross acres

** Gross Mean Prospective Recoverable Resource based on 271,000 gross acres, #Net Mean Prospective Recoverable Resource

- Drilling / stimulation completed on time and to date remains under budget
 - Two stage, multi-perforation cluster stimulation over 128' interval
- Slickwater treatment comprising 27,837 barrels of water and 1 million pounds of proppant
- June 19 – July 10: Initial clean up and then shut in to allow for pressure build-up and 'soak'
- August 31: Clean up recommenced with first hydrocarbon to surface recorded on September 9
- September 18: Shut-in for Arctic Winter after average flow of 1.85mcf/d gas, with increasing ratio of heavy components, during test period
 - 20% of frac fluid recovered vs projected minimum target of 30% to achieve connectivity to reservoir
 - Results not considered representative of potential flow rate or compositional profile of hydrocarbons in the reservoir
- Forward plan to optimise and re-initiate flow testing using artificial lift in April/May 2018 - estimated cost US\$2m (US\$1.5m net)

HRZ Unconventional: Phase II Icewine#2 Workover Schematic



Nitrogen (N₂) injected to lighten fluid column inside wellbore and reduce downhole pressure to improve production from reservoir.

1 N₂ initially injected through coiled tubing (CT) with production through annulus. Planned for first 24 to 48 hours to rapidly lift fluid inside wellbore and drain fractures near wellbore.

2 N₂ injected through annulus with production through CT. Production through smaller diameter CT allows for increased flow rate with less N₂.

Legend

- Nitrogen
- Frac/Res Fluid
- Frac/Res Fluid lightened with Nitrogen
- Gas Lift valve
- Packer

HRZ Unconventional Where We Started.....



Investment Thesis: *First Mover Edge*

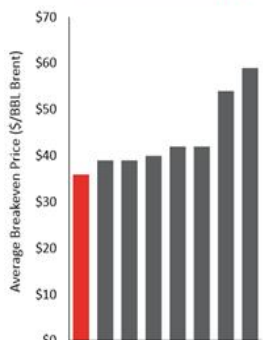
The Project Icewine Joint Venture (PIJV) is advantaged by a proven exploration “toolbox” that allowed it to capture a strategic, technically-driven, first-mover, low-cost play entry into an extensive, world-class liquids rich unconventional resource, located on existing infrastructure under U.S. jurisdiction with production indexed to Brent crude oil pricing

Answering Industry Demand

PIJV’s asset in contiguous sweet spot acreage meets industry demand to replace reserves with well-inventory and lease term running room, enabling operators to engineer the solution for continued scalable success

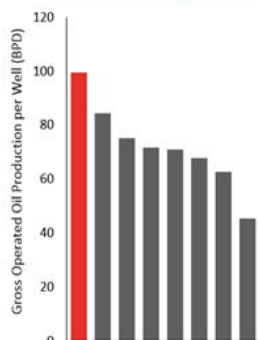
“Toolbox”: Past Performance Eagle Ford: Industry-Leading Performance

Lowest Cost of Supply



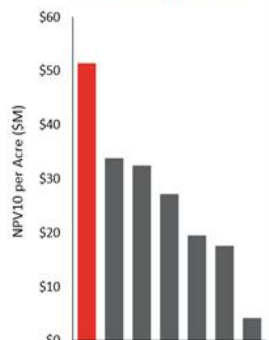
Source: Wood Mackenzie Global Economic Model (Aug. 2017)

Highest Oil Rates per Well



Source: Texas Railroad Commission, 2017

Highest NPV per Acre



Source: Rystad NasCube (Aug 2017)

Operators with >100 M acres

*November 8, 2017 Analyst Presentation



PIJV’s Contrarian View – *advocatus diaboli*

Key Icewine Technical Parameters:

Parameter	Perception	Reality
Hydrocarbon Phase	Gas – too mature	Low viscosity, liquids rich
Completion Quality	Too soft to frac	Fraccable
Reservoir Pressure	Normally pressured	Highly over-pressured

- Icewine received minimal attention from Lower 48 focused unconventional industry
- Similar case to early-stage Eagle Ford shale, limited core and well data from target HRZ shale available to apply analogue methodology

** PIJV team member led COP team that captured Eagle Ford early mover acreage spending ~\$300/acre on ~320,000 acres (AAPG, 2014)

HRZ Unconventional Where We Are.....



Icewine #1 & #2 and Regional Well Data: All the Elements For Resource Success

Reservoir Quality		Completion Quality	
Parameter	Comment	Parameter	Comment
Organic Content	Rich and sufficient for world-class resource	Clay Content	Consistent with other economic plays, but need additional data points
Thermal Maturity	Numerous lines of evidence point toward low-viscosity, super-critical phase oil	Mechanical Properties: Young's modulus, Poisson's ratio	HRZ fraced effectively, but require a distribution of wells & 3D seismic to fine-tune
Hydrocarbon Pore Volume	Stacked, deep-water, 'hybrid' reservoir that appears to be both commercially and geologically viable	Stress Profile	Highly over-pressured (direct correlation to commerciality) with low regional anisotropy

Data acquired supports that the PIJV has secured the HRZ sweet spot acreage as defined by the parameters where the most oil-rich vapor phase occurs at highest reservoir pressure i.e. the most profitable part.* Commerciality risking underway by the PIJV utilizing probabilistic methodology commonly used in unconventional resource exploration. Results to date are considered compelling and warrant further additional drilling & evaluation, which it plans to fund via farm-out.

*Cander, 2013

Bottom Line: Icewine has the ingredients to make a commercial shale play / execute a farm-out 10

Icewine#2: Results to Date

- ✓ Proved a large slickwater frac using sand as proppant is achievable in the HRZ - first in Alaskan exploration history
- ✓ Proved initiating a fracture perpendicular to the bedding plane is achievable in the HUE from the DFIT test as imaged by the FMI log. The fracture orientation in the HRZ is expected to mirror that of the HUE
- ✓ Proved the HRZ contains an elevated pore pressure of 0.82 psi/ft
- ✓ Proved the ash beds within the HRZ are not frac barriers and can be effectively fraced
- ✓ Proved the HRZ is easy to initiate a frac in - low fracture initiation pressure relative to many other shales
- ✓ Fracture vertical height containment achieved

Icewine#2: Factors to be Resolved:

- Need to access formation by removing additional 20% to 30% of loadwater from IW2
- Need to understand wettability of rock and its relationship to IW2 stimulation chemicals
- Resolve petrophysical interpretation issues caused by high pyrite levels
- Need 3D to incorporate IW results into regional context / locate “sweetest” spots
- Need to further delineate variability of resource within fairway

HRZ Unconventional Where We Are Going.....



Geological
Concept

Unconventional
Play Fairway

Sanctioning

Optimal Engineering
& Development

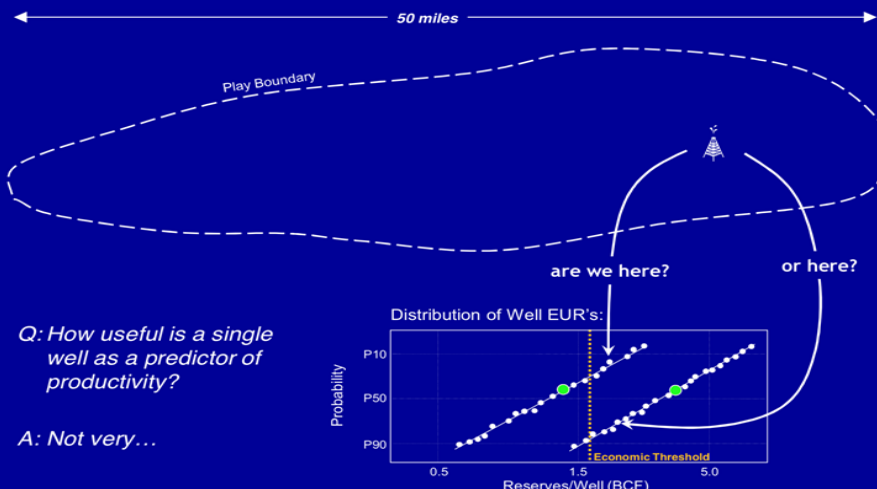
Proven Play Distributions

Play	P10/P90	Sample Size
Barnett	9.6	13,575
Fayetteville	5.4	4,442
Haynesville - LA	5.0	2,135
Haynesville - TX	3.8	659
Marcellus	7.8	2,169
Woodford	5.4	2,118

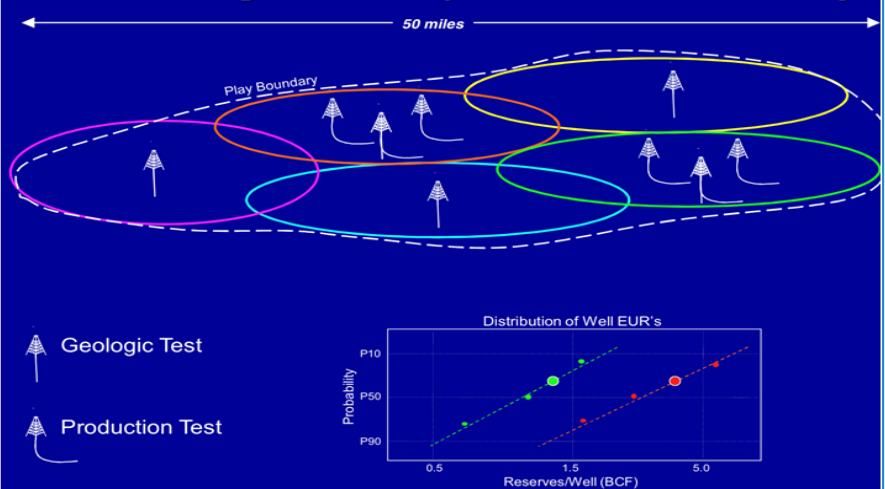
(Heckman et al 2013)

- Valuation of unconventional resources is on the basis of a 'type well'
 - By definition this is the mean of a larger population of wellbores
 - Low well count and lack of direct analog creates uncertainty in type well profile for HRZ
- The HRZ needs a continued pilot program to derive statistically meaningful data
- Additional wells are required to delineate the distribution of the P10/ P90 ratio of the HRZ resource
- The resource prize and current data provides confidence a farm-out can be achieved to further fund the program

One-Well doesn't define a Distribution



CoP's 1st Eagle Ford Step out was 55 miles away

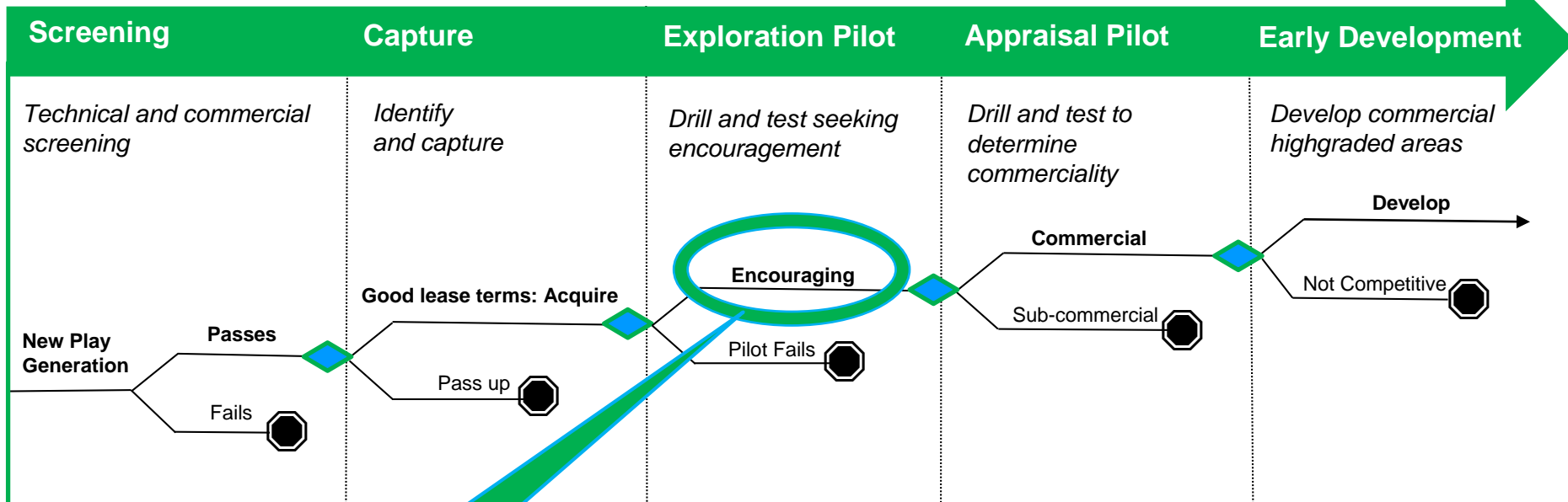


Unconventional Resource Plays: Modelling Decision Behavior



Icewine HRZ Shale Play:

Encouraging results - attractive to a farminee to progress and create world-class commercial resource

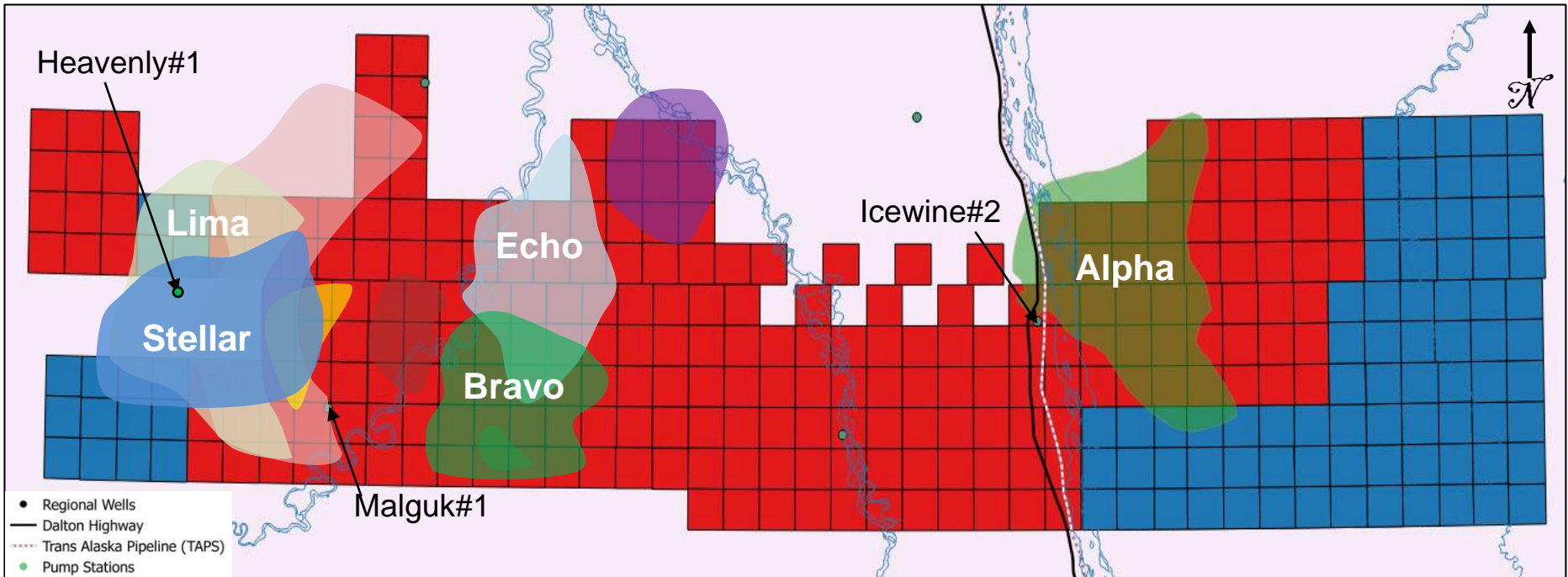


ICEWINE PLAY STATUS:

- 475,000 acres (~1,922 km²)
- Resource prize attractive to end-user oil companies
- Volatile oil phase
- Highly over pressured
- Premium product pricing

	Drilling Program:	<ul style="list-style-type: none"> ▪ Representative cores across fairway ▪ Initial flow tests 	<ul style="list-style-type: none"> ▪ Horizontal appraisal wells with meaningful IP data 	<ul style="list-style-type: none"> ▪ Continue to drill wells in best prospect areas
	Economic Hurdle	% of Breakeven	Breakeven	Competitive

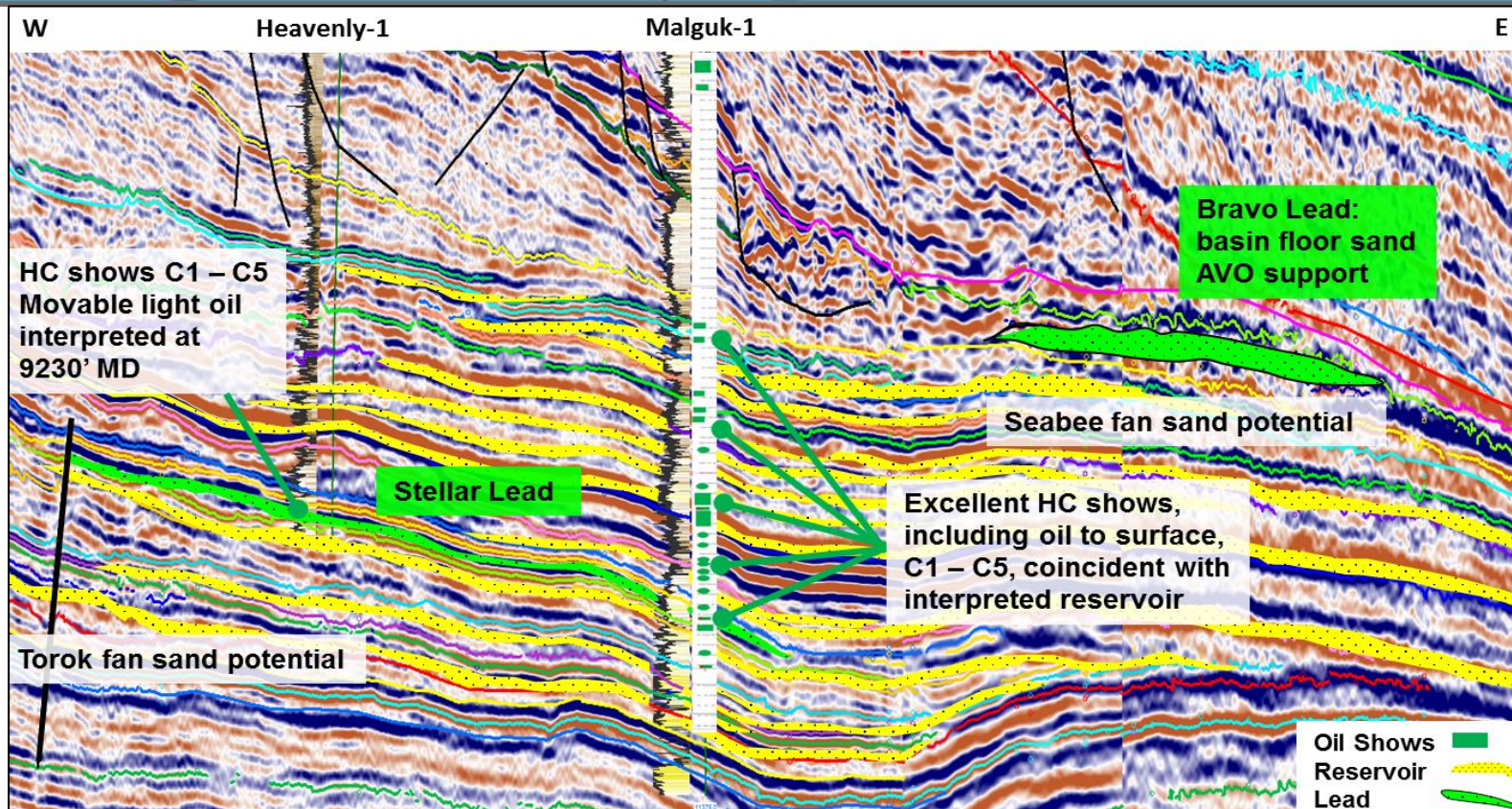
Project Icewine Conventional Prospectivity Portfolio



- Conventional Prospective Resource Potential (mean unrisked) :
 - 1.96 BN barrels gross; 1.05 BN net to 88E*
- Multiple stacked leads predominantly stratigraphic, slope apron, turbidites & basin floor fan systems
- 1,600 line km vintage 2D reprocessed / interpreted: new potential identified in Torok e.g. Stellar
- Plan to acquire ~500 km² 3D seismic to firm up drilling candidates (net cost ~US\$6-8m)
- Exceptional exploration drilling success over last 4 years using 3D seismic on the North Slope
- US\$850m transaction on nearby conventional discoveries highlights increased regional interest

* Refer slide 16 for full resource table and disclaimer

Project Icewine: 2D Seismic Reprocessing Highlights Deeper Potential



- Additional play potential identified on reprocessed 2D seismic and regional well petrophysics
 - Stacked Torok and Seabee Fm basin floor fan sands associated with lowstand events
 - Analogous play type to Meltwater/Tarn Field depositional system
 - Moveable hydrocarbons interpreted in both Malguk-1 and Heavenly-1
 - Good porosity interval intersected within the Torok Fm sands at Malguk averaging 17%
 - Multiple objectives could be tested by an exploratory well in the Western Play Fairway

Project Icewine: Conventional Portfolio Prospective Unrisked Recoverable Resources



PROJECT ICEWINE CONVENTIONAL PORTFOLIO Prospective Recoverable Resources MMBO					
Leads	NOVEMBER 2017: Post Mapping & Interpretation of Reprocessed 2D				
	Unrisked				
Q4 2017 REVIEW	Low	Best	High	Gross Mean	Net Mean to 88E
WESTERN PLAY FAIRWAY					
Bravo	129	215	357	232	180
Lima	281	457	731	488	190
Stellar	64	150	353	187	136
Mike	90	166	293	182	54
Rose	98	171	287	185	103
Victor	20	31	47	33	25
Charlie West	15	25	42	27	21
Oscar	15	27	47	29	23
Papa	8	14	25	15	12
Charlie 4 Way	9	15	24	16	12
CENTRAL PLAY FAIRWAY					
Echo	60	138	293	162	121
Golf	106	193	339	211	72
EASTERN PLAY FAIRWAY					
Alpha	19	71	263	118	91
Romeo	2	3	5	4	3
Sierra	1	2	3	2	2
FINAL TOTAL				1,891	1,045

- Bravo & Alpha Leads prominent on modern 2D seismic
- Additional potential identified on legacy 2D – recently reprocessed and interpreted
- Stacked leads offer opportunity to test multiple objectives with one well
- 3D seismic acquisition scheduled to commence in February 2018

*Prospective Resources classified in accordance with SPE-PRMS as at 24th November 2017 using probabilistic and deterministic methods on an unrisked basis. Leads identified from interpretation of modern 2D seismic acquired in 2015/2016 and legacy 2D seismic of varying vintages post 1980 across Project Icewine, which comprises 475,000** gross acres on the Central North Slope of Alaska. 88 Energy is Operator of record at Project Icewine (through its wholly owned subsidiary Accumulate Energy Alaska, Inc) with a ~63% working interest over the conventional play fairway where the leads have been mapped.*

Cautionary Statement: The estimated quantities of petroleum that may be potentially recovered by the application of a future development project relate to undiscovered accumulations. These estimates have both an associated risk of discovery and a risk of development. Further exploration, appraisal and evaluation are required to determine the existence of a significant quantity of potentially movable hydrocarbons.

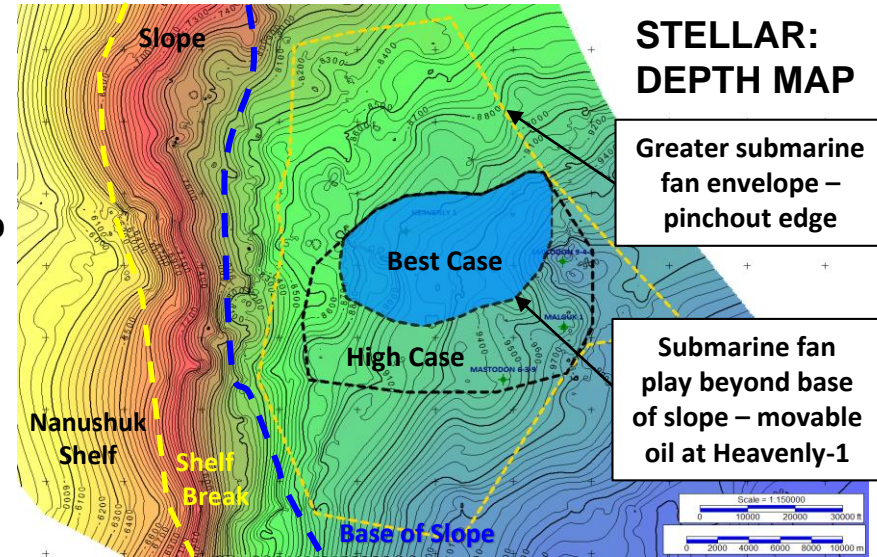
*** 301,000 acres net to 88 Energy working interest*

Project Icewine: Stellar Lead

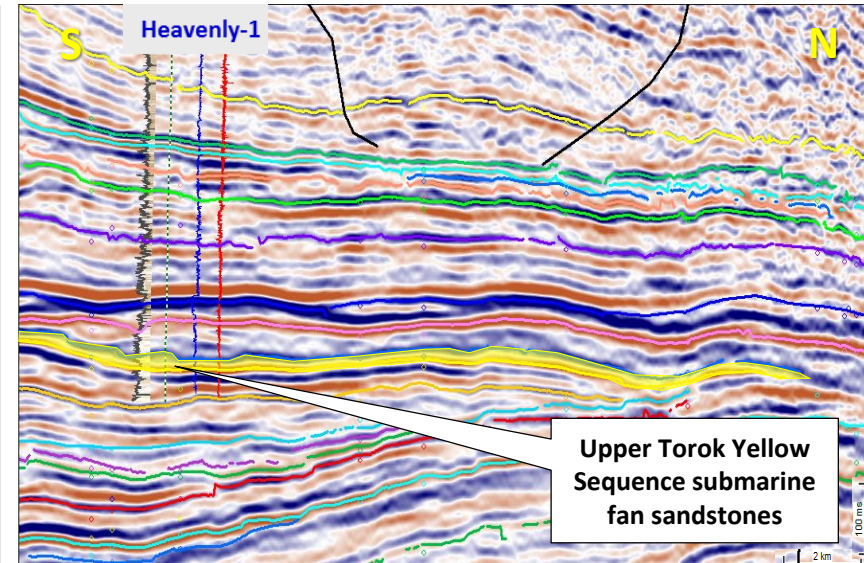
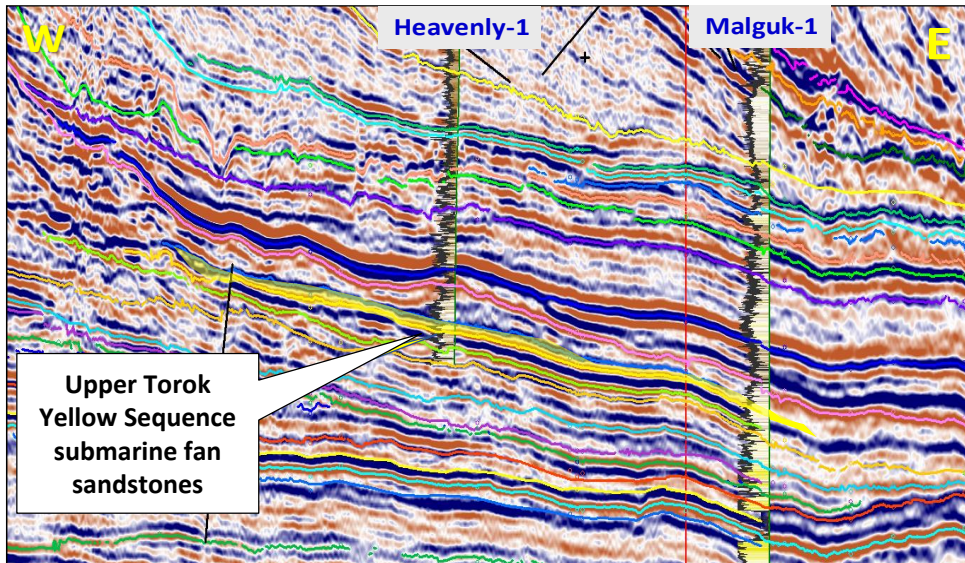
Upper Torok Formation Submarine Fan



Stellar: 187 MMBO Gross Mean
Trap: Structural/Stratigraphic
Reservoir: Submarine fan sandstones
 Porosity: 17%; Net to Gross: 35%
Top Seal: Slope/basinal fines / U Torok condensed sequence
Base Seal: Slope/basinal fines
Shows: Heavenly-1: movable oil in porous sst @ 9230'MD
 Malguk-1 extensive hydrocarbon shows
AVO supported
Charge: HRZ / Hue Shales
Risks: Updip seal, lateral extent of good reservoir quality



STELLAR: Prospective Recoverable Resources MMBO - Unrisked				
Low	Best	High	Gross Mean	Net Mean to 88E
64	150	353	187	136



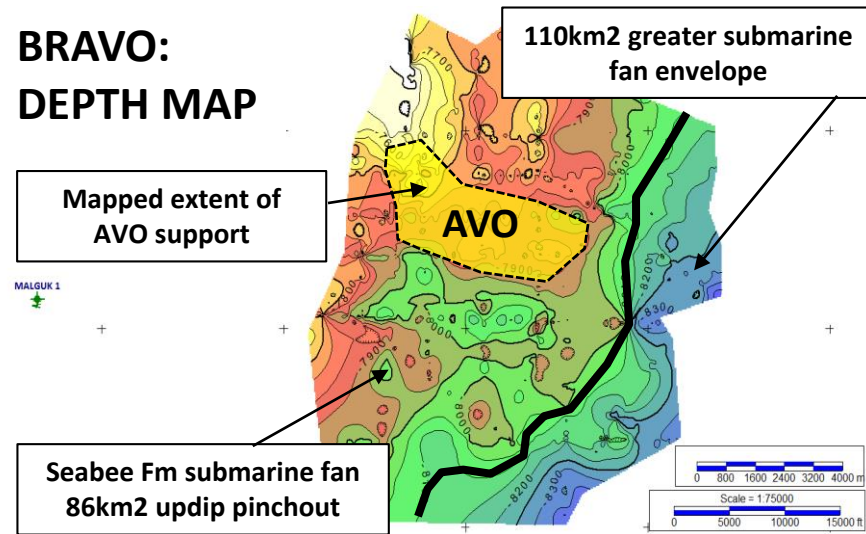
Project Icewine: Bravo Lead

Seabee Formation Submarine Fan



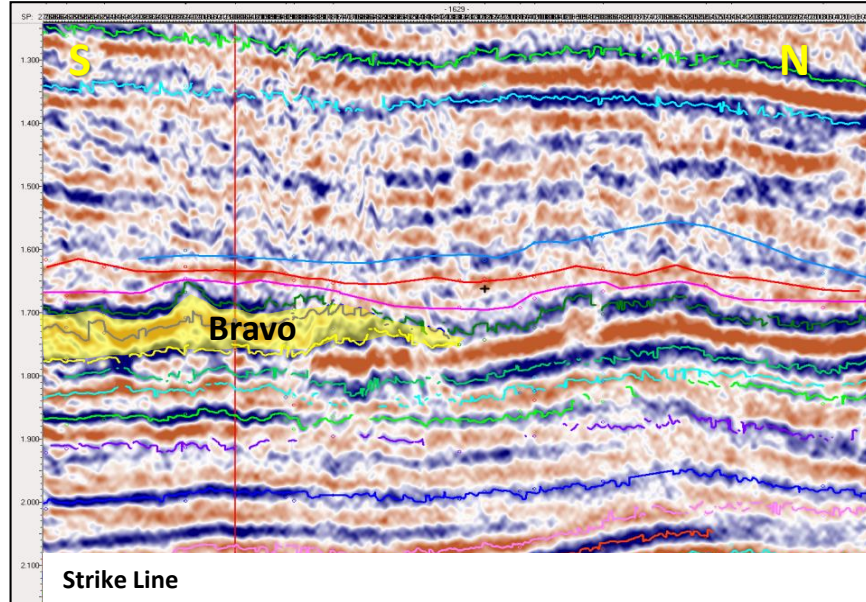
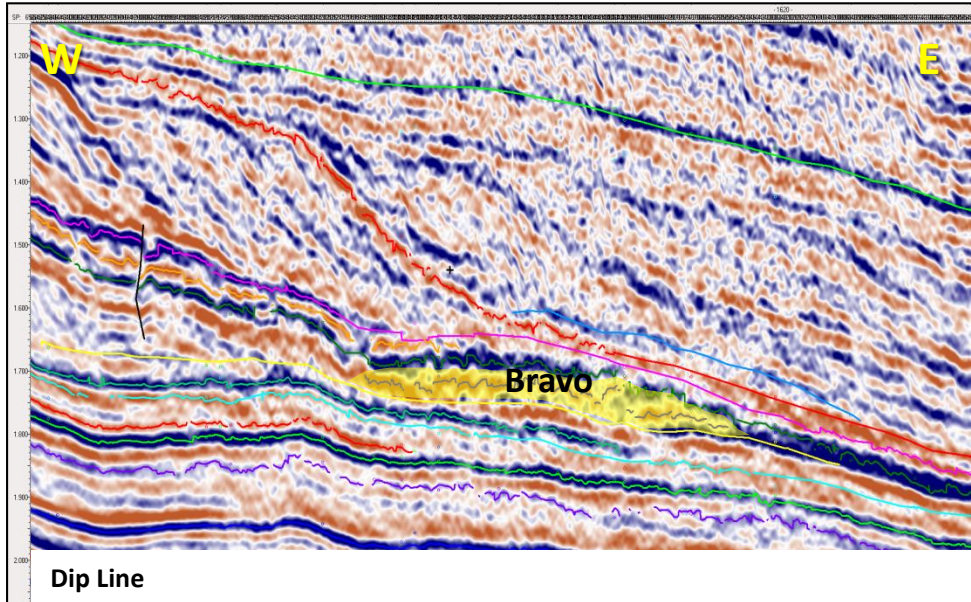
Bravo: **232 MMBO Gross Mean**
 Trap: Structural/Stratigraphic
 Reservoir: Basal mound sandstones,
 • Av Por 15%; N:G 30%
 Top Seal: Seabee Fm slope fines
 Base Seal: Seabee Fm basinal fines
 Shows: No previous wells intersect this fan
AVO supported
 Charge: HRZ / Hue Shales
 Analog: Tarn/ Meltwater fields

BRAVO: DEPTH MAP

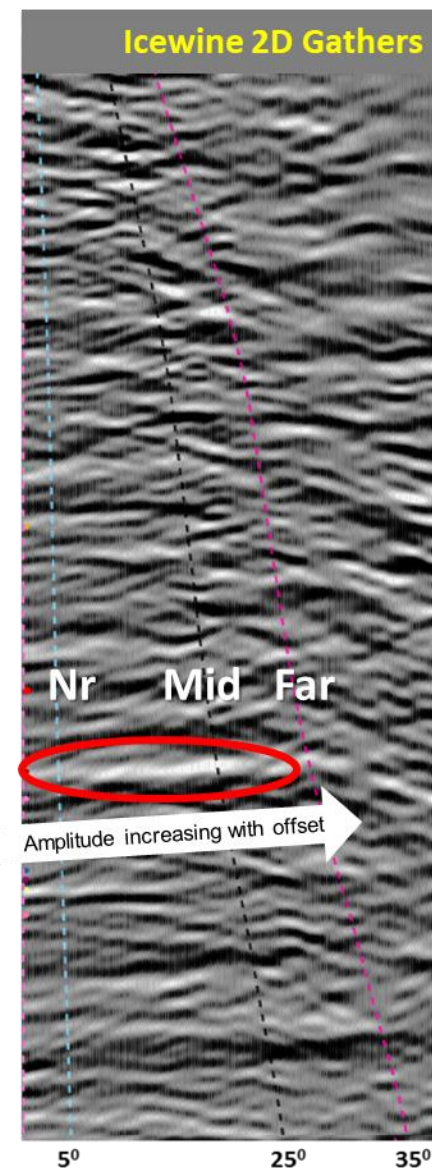
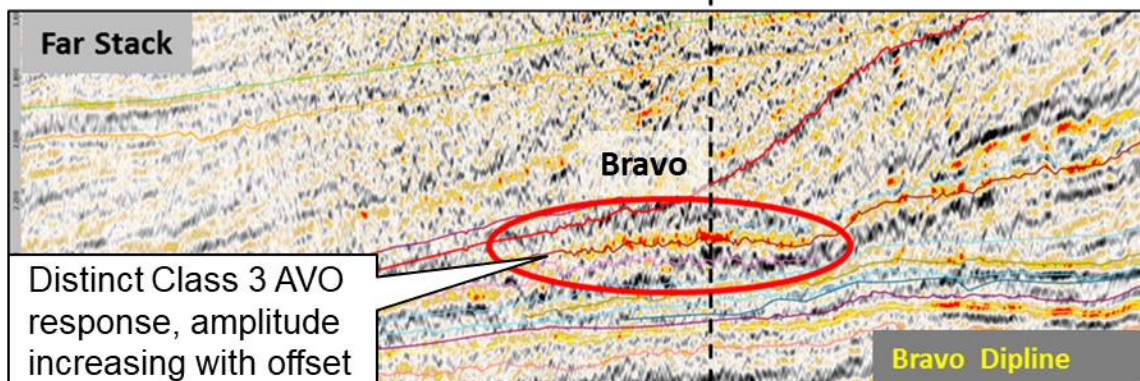
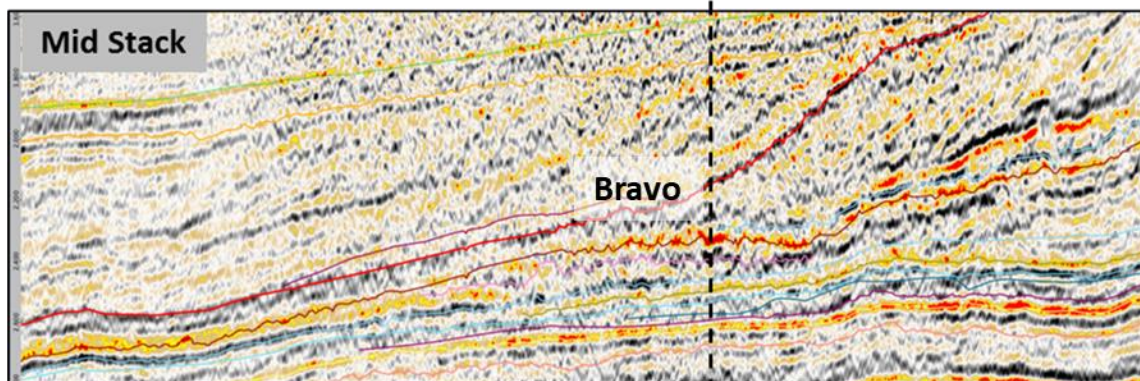
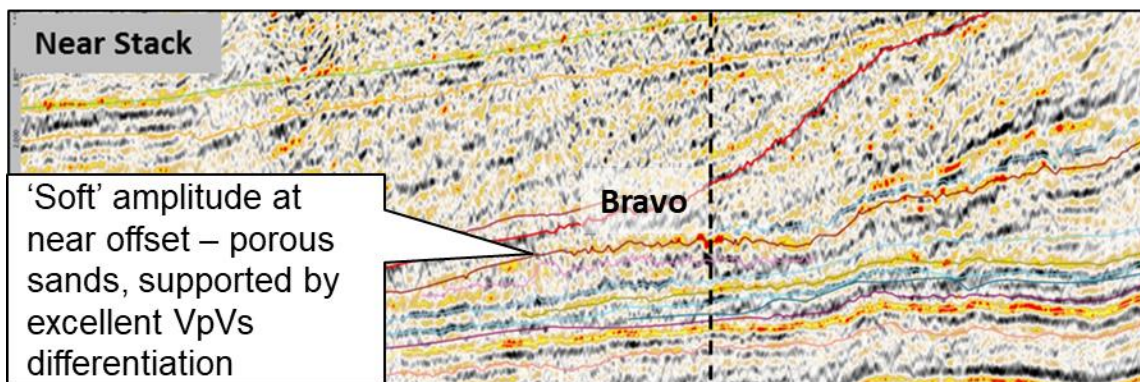


BRAVO: Prospective Recoverable Resources MMBO - Unrisked

Low	Best	High	Gross Mean	Net Mean to 88E
129	215	357	232	180



Project Icewine: Bravo - AVO Support Porous Sand and Possible Hydrocarbons

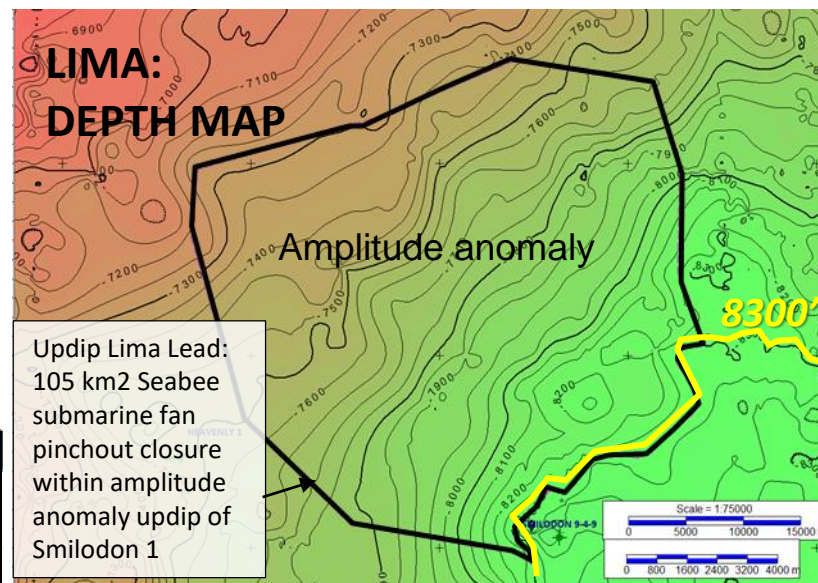


Project Icewine: Lima Lead

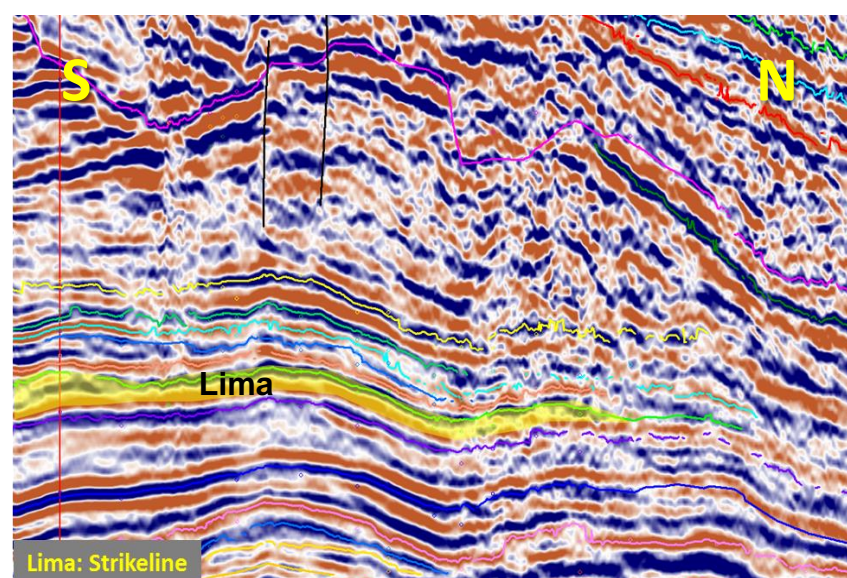
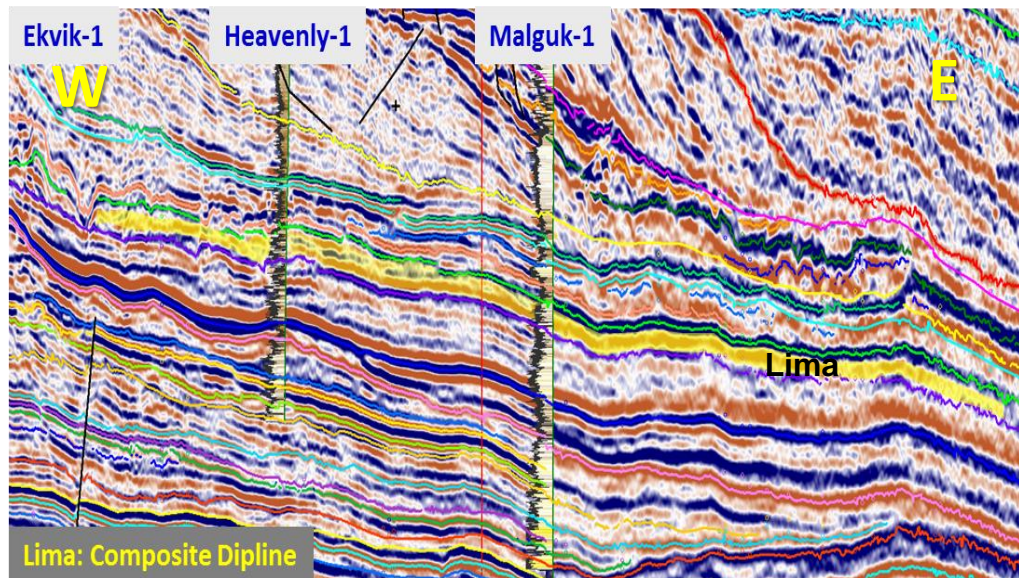
Seabee Formation Submarine Fan



Lima: **488 MMBO Gross Mean**
Trap: Structural/ stratigraphic on structural nose
Reservoir: Submarine fan sandstones
 • Avg Porosity 15%; Net to Gross 30%
Top Seal: Slope basinal fines – condensed sequence
Base Seal: Slope basinal fines
Shows: Malguk#1 8525 – 8900';
 Heavenly 8063 – 8112'
 AVO support
Charge: HRZ / Hue Shales
Analog: Tarn/ Meltwater fields
Risks: Updip seal, reservoir quality

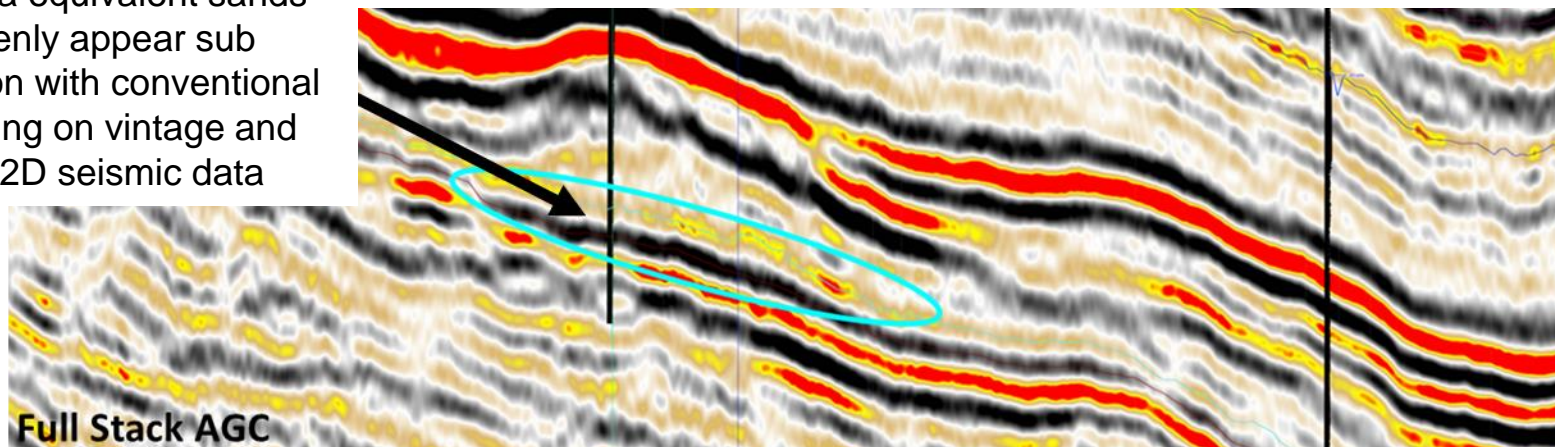


LIMA: Prospective Recoverable Resources MMBO - Unrisked				
Low	Best	High	Gross Mean	Net Mean to 88E
281	457	731	488	190



Comparison of Amplitude of Different Spectra

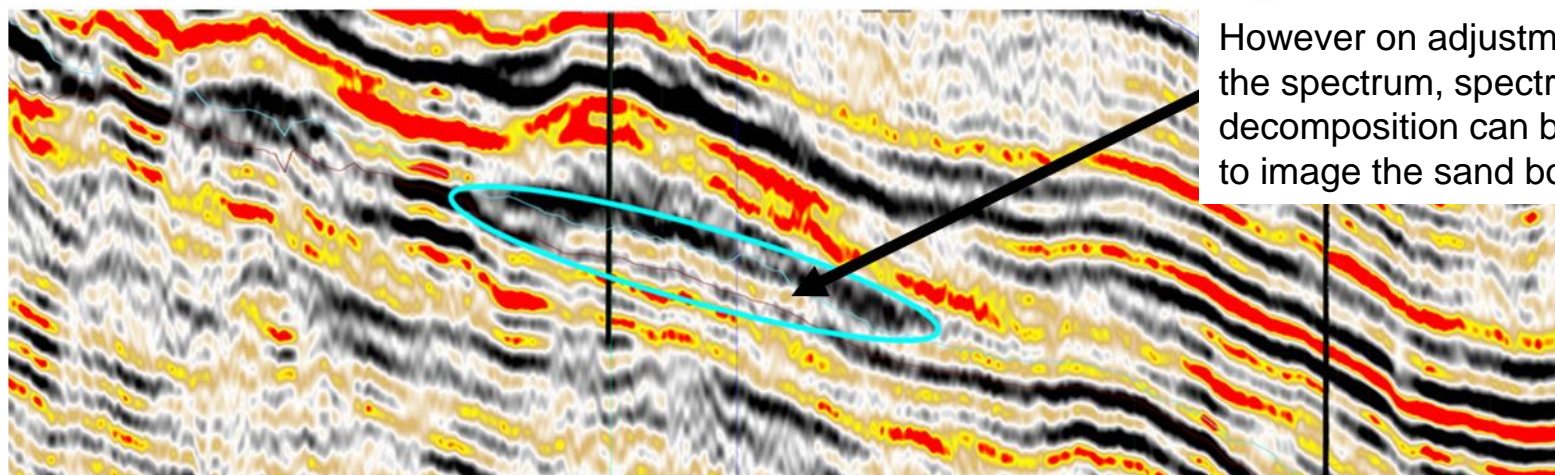
The Lima equivalent sands at Heavenly appear sub resolution with conventional processing on vintage and Icewine 2D seismic data



Full Stack AGC

Heavenly-1

Malguk-1



However on adjustment of the spectrum, spectral decomposition can be used to image the sand body

True Full Stack AGC spectrally corrected for 40 - 60Hz to resolve sand body

Recovery of this spectrum on the 2018 Icewine 3D seismic data will improve mappability of prospective sands

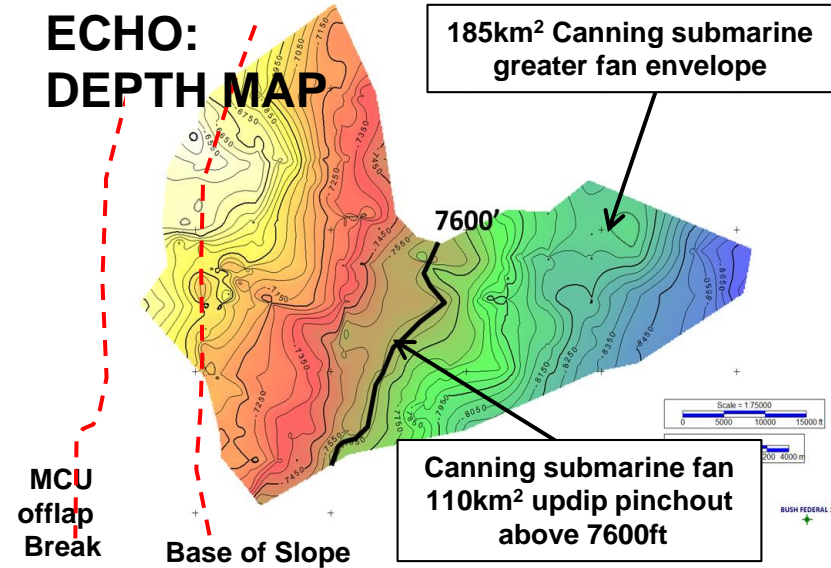
Project Icewine: Echo Lead

Canning Formation Base of Slope Fan



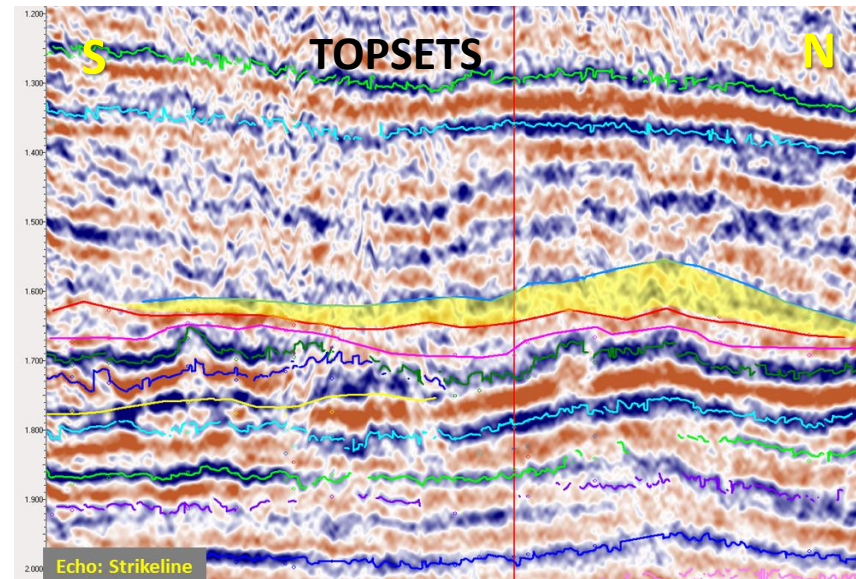
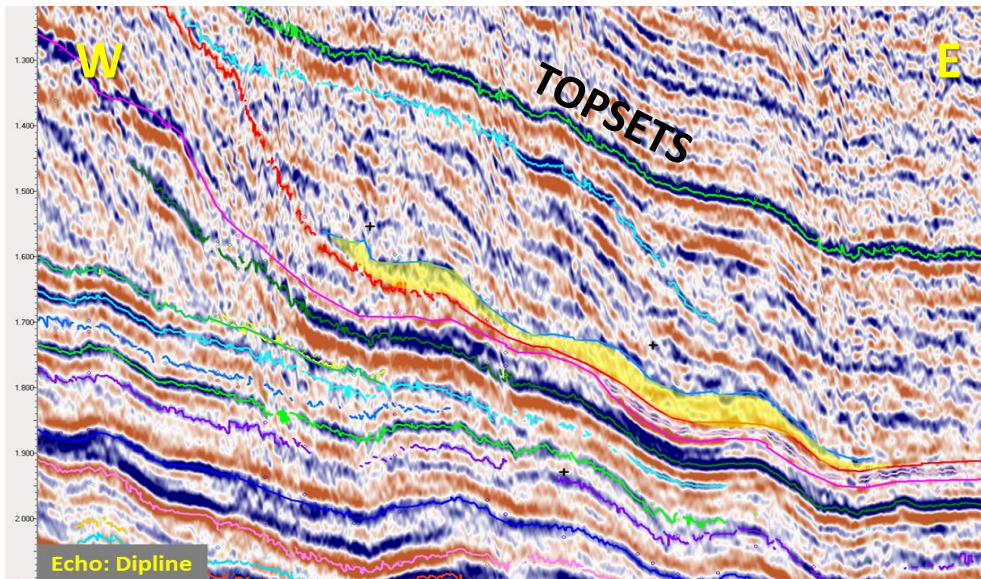
Echo: 162 MMBOE Gross Mean
Trap: Structural/Stratigraphic
 Requires updip pinchout or shale-out
Reservoir: Submarine fan sandstones
 • Avg Porosity 15%; Net to Gross: 35%
Top Seal: Canning Fm - basal fines
Base Seal: Seabee Fm - slope and basal fines
Shows: Pipeline State-1 @ 8635-8910ft & Bush Federal-1 @ 9020-9160ft; oil & gas shows in distal
equivalents
Charge: HRZ / Hue Shales
Risks: Updip seal, reservoir quality

ECHO: DEPTH MAP



ECHO: Prospective Recoverable Resources MMBO - Unrisked

Low	Best	High	Gross Mean	Net Mean to 88E
60	138	293	162	121



Recent Acquisition of Existing Oil Discovery (subject to formal award in 2018)

- Opportunistic (post 2017 lease expiry), low cost bid in improving oil price environment
- 88E 100% ownership of ~15,520 acres through subsidiary Regenerate Alaska, Inc
- Located in close proximity to newly commissioned (2016) infrastructure

Multiple Oil Bearing Sands in Historic Well

- Yukon Gold #1 well drilled by BP 1993/ 1994 to a Total Depth of 12,800' MD
- Oil saturations indicated at multiple intervals in the Tertiary Canning Formation between 8,880' - 9,340' and 12,200'- 12,350'
- Good effective porosity indicated in both intervals >18%
- Oil saturations supported by mudlog shows, C1-C5 mudgas ratios and sidewall cores
- Topset delta and bottomset turbiditic Brookian conventional plays proven locally (e.g. Badami)
- State of Alaska reported Yukon Gold as a significant undeveloped oil resource

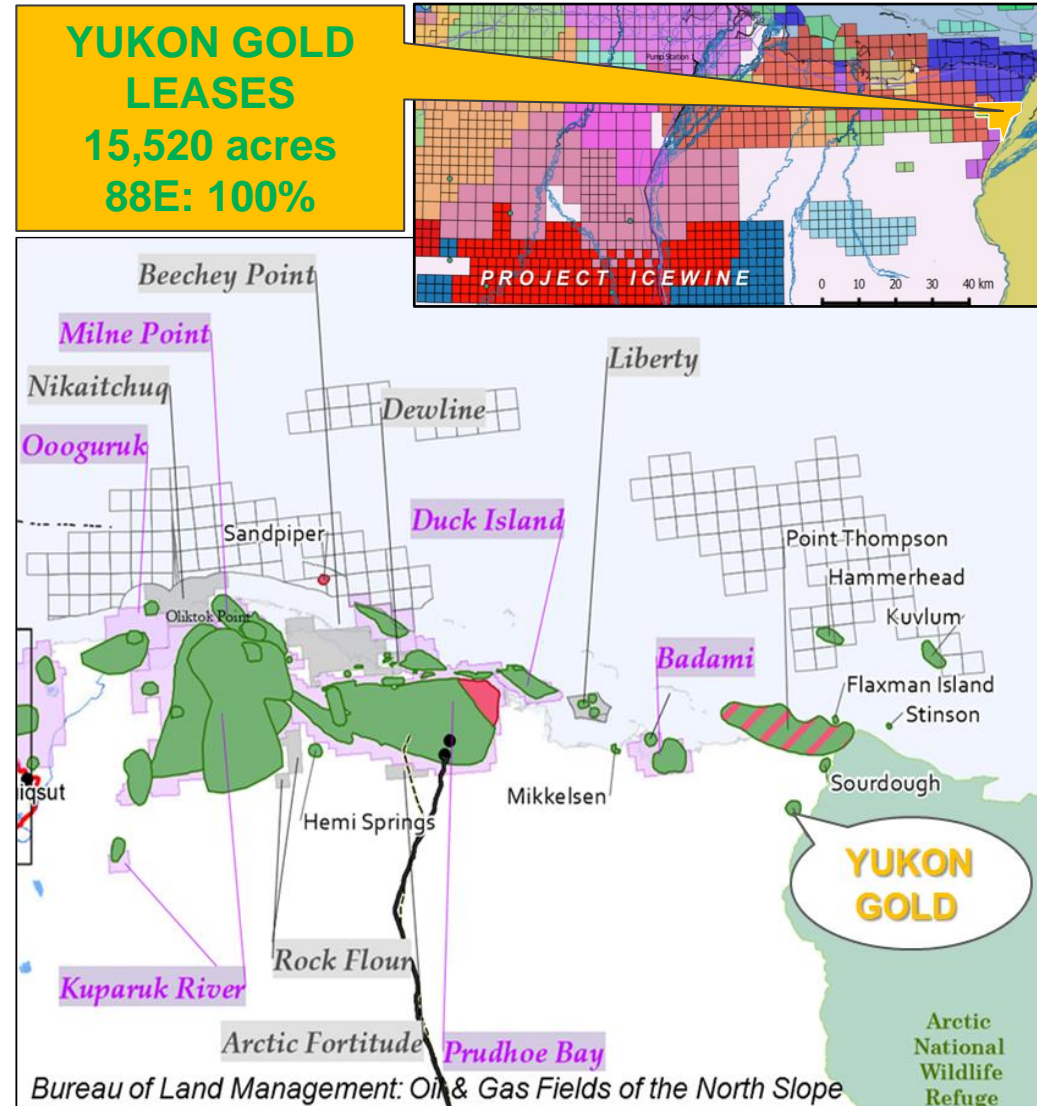
Forward Strategy

- Work up prospectivity with minimal spend and then seek to partner
- Internal assessment underway utilizing existing regional well logs and 2D seismic (1989)
- Project Icewine HRZ and conventional targets remain principal exploration objectives

Yukon Gold: Background



- Yukon Gold #1 located on the eastern margin of the North Slope of Alaska, ~50 miles East of Prudhoe Bay
- 120 MMbbls of recoverable oil reserves estimated (AEDC, 2015*)
- Volumetric review / commercialisation strategy underway – minimal spend required in near term
- Plan to partner for any major capital outlay
- Recently commissioned infrastructure (2016) and improving oil price increases chance of securing deal if technical merit can be demonstrated



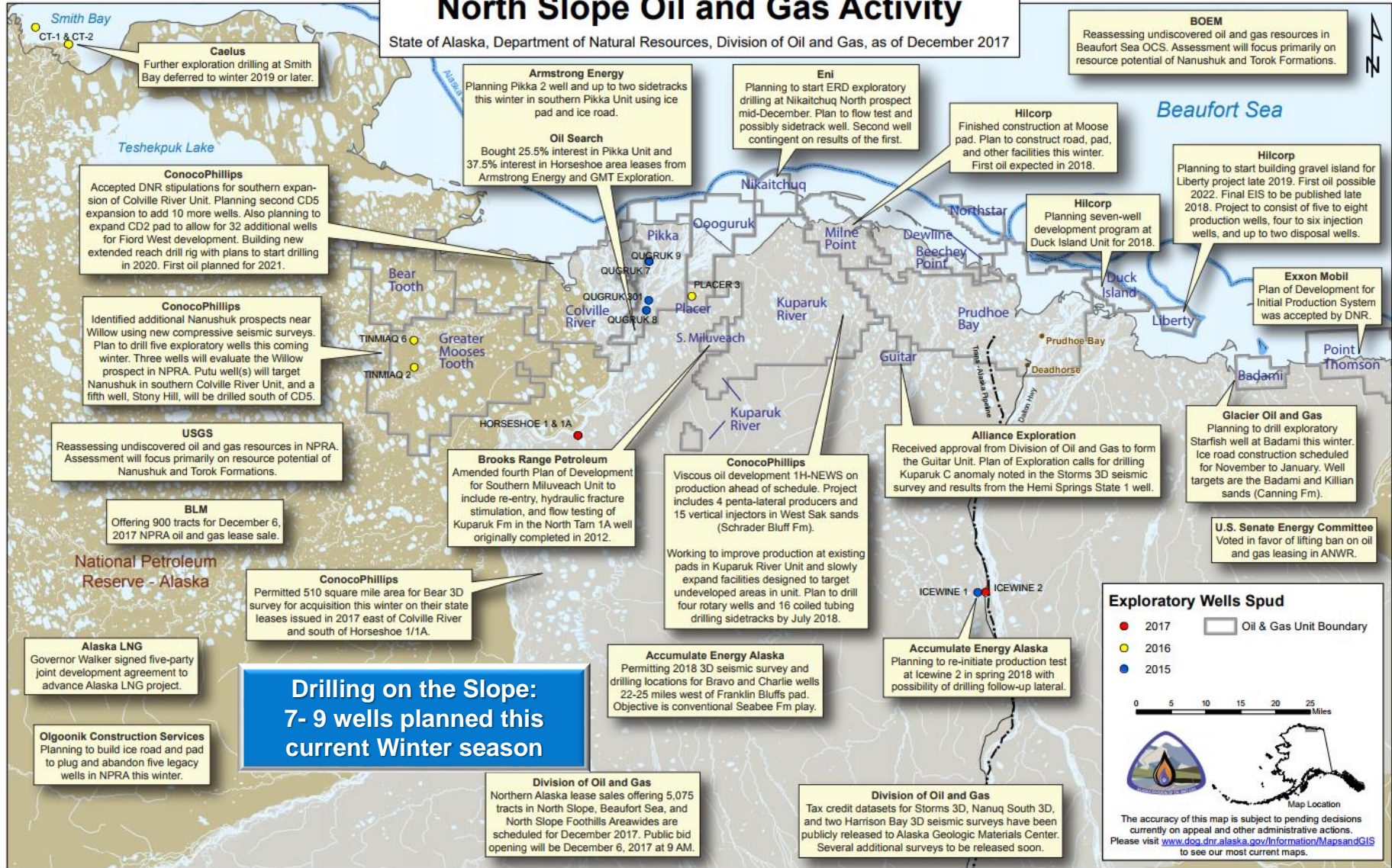
* Anchorage Economic Development Corporation

North Slope Alaska: Strong Industry Interest Reflected by High Activity



North Slope Oil and Gas Activity

State of Alaska, Department of Natural Resources, Division of Oil and Gas, as of December 2017



**Drilling on the Slope:
7- 9 wells planned this
current Winter season**

Exploratory Wells Spud

- 2017
- 2016
- 2015

Oil & Gas Unit Boundary

0 5 10 15 20 25 Miles

Map Location

The accuracy of this map is subject to pending decisions currently on appeal and other administrative actions. Please visit www.dog.dnr.alaska.gov/Information/MapsandGIS to see our most current maps.

Project Icewine: Unconventional - HRZ

- Flow-back clean up phase ongoing with only ~20% of frac fluid recovered vs target of >30% - recommence April/May 2018 with artificial lift
- Results to date encouraging and consistent with early stage results from other successful plays

Project Icewine: Conventional

- Final interpretation of 2D seismic highly encouraging
- Acquire 500km² of 3D seismic in Feb '18 to firm up drilling candidates for 1H2019 -> launch farm-out process

Yukon Gold: Existing Oil Field Discovery

- Opportunistic, low cost acquisition of existing oil discovery, close to recently commissioned infrastructure – internal assessment underway

Strong Financial Position

- US\$11m in cash (not including US\$6.9m 1Q 2018 in the money options), compared to planned work program of US\$7-US\$9m
- US\$21m in forecast cash receivable from State vs debt of US\$16.5m

Mr David Wall – Managing Director

4 years experience in strategy and planning at Woodside Petroleum. 6 years experience in financial services industry as small cap oil and gas equities analyst, specialising in exploration companies.

B. Comm in Management and Finance from University of Western Australia.

Mr Michael Evans – Non-Executive Chairman

Extensive executive and Board level experience with publicly listed companies in the natural resources sector spanning over 30 years.

Founding Executive Chairman of ASX oil and gas explorer FAR Limited and was responsible for FAR's entire West African portfolio where significant oil discoveries were made in 2014.

B Bus Curtin University, Chartered Accountant, Chartered Secretary, Governance Institute Australia

Erik Opstad – General Manager Alaska Operations

37 years of energy project management and technical experience including with BP in Alaska, conducting both offshore and onshore operations. Mr. Opstad joined the 88 Energy team from Savant Alaska where as a principal in the company he served as Drilling & Wells Manager and General Manager driving geoscience and engineering redevelopment activities at the Badami oilfield on the North Slope of Alaska. *Erik holds a BSc and MSc in Geology from the University of Iowa.*

Dr Stephen Staley – Non-Executive Director

34 years of energy management and technical experience including with Conoco and BP. Dr Staley was founding Managing Director of upstream AIM start-ups Fastnet Oil & Gas plc and Independent Resources plc and a Non-executive Director of Cove Energy plc. *BSc (Hons.) in Geophysics from Edinburgh University, PhD in Petroleum Geology from Sheffield University and MBA from Warwick University.*

Mr Brent Villemarette – Non-Executive Director

Over 35 years experience in the global oil and gas industry, primarily with Apache Corporation in the US and in Australia. Also served as Chief Operating Officer for Transerv Energy, an ASX listed oil and gas company. *BSc in Petroleum Engineering from Louisiana State University. Reservoir Engineer.*

Ms Elizabeth Pattillo – General Manager Exploration

Over 20 years experience in the upstream petroleum industry both with major international oil and gas companies, (BHP Petroleum Pty Ltd, Shell UK Exploration & Production), and junior explorers. *BSc (Hons) in Geology, Monash University Australia; Post Graduate Diploma in Education University of Western Australia*

Mr Ashley Gilbert – Chief Financial Officer

Over 20 years experience in commerce and public practice. Prior roles include CFO of Neptune Marine Services and Nido Petroleum, as well as positions within Woodside Petroleum and GlaxoSmithKline plc. in London. *B.Comm Curtin University, Chartered Accountant, Governance Institute Australia, Institute of Company Directors GAICD*

Managing Director: David Wall

dwall@88energy.com

Registered Office:

Level 2, 5 Ord St, West Perth WA 6005

Postal Address:

PO Box 1674, West Perth WA 6872

Telephone: +61 8 9485 0990

Facsimile: +61 8 9321 8990

Web: www.88energy.com

Share Registry:

ASX: Computershare

Investor Services Pty Ltd

ASX: 88E

AIM: Computershare

Investor Services Pty Ltd

AIM: 88E

Brokers:

Australia

Hartleys Ltd

As Corporate Advisor: Mr Dale Bryan + 61 8 9268 2829

United Kingdom

Cenkos Securities Plc As Nominated Adviser and Broker:

Mr Neil McDonald

+44 (0)131 220 9771 / +44 (0)207 397 1953

Mr Derrick Lee

+44 (0)131 220 9100 / +44 (0)207 397 8900

Investor Relations

Finlay Thomson

+44 (0) 7976 248471