

23 February 2018

MORABISI PROJECT – ROBELLO & HEAVY CREEK REE BANKA DRILLING PROGRAMME

HIGHLIGHTS

- The preliminary programme of Banka drill testing of alluvial areas at the Robello and Heavy Creek Prospects has been completed.
- Sixty-one holes for a total of 210.3m of drilling completed at three sites
- Preliminary analytical testing has been completed in Vancouver BC, Canada

INTRODUCTION

Greenpower Energy Limited (GPP) in partnership with Guyana Strategic Minerals (GSM) Are exploring a tenement, the Morabisi Project, in Guyana, South America. The Morabisi Project covers part of the Guyana Shield, a greenstone body with associated LCT pegmatites and alluvial REEs. A preliminary programme of Banka drilling of the REEs has been completed at three locations within the Morabisi PGGs, Heavy Creek, Young Creek, and Robello Tailings.

The results presented here are part of the ongoing REE exploration programme and are being analysed by the Joint Venture partners to formulate further testing and test drilling.

BANKA DRILLING PROGRAMME

This initial Banka drilling programme of 61 holes for 210.3m of drilling was completed at three locations within the Morabisi PGGs. At Robello Tailings 6 holes for a total of 30.5m; At Young Creek 7 holes for a total of 21.3m and at Heavy Creek 48 holes for a total of 158.5m were drilled. The 6-inch (152mm) diameter Banka holes were drilled to refusal. Each hole was sampled at 1m interval, less when dictated by drill refusal. Each sample was riffle split, half being sent to Georgetown for analysis preparation. The retained half is being held for further testing. Pulps were shipped to Vancouver BC Canada for analysis.

The Banka drill hole location plans and sample analysis tables are included below.

Location	Holes	Meters	Samples
Heavy Creek	48	158.5	184
Robello Ck	7	21.3	26
Robello Tail	6	30.5	32
total	61	210.3	242

Further to preliminary analyses selected Banka drill hole samples are currently being shipped to Perth WA for Metallurgical testing.

 +61 418 852 700 | +61 299 991 515

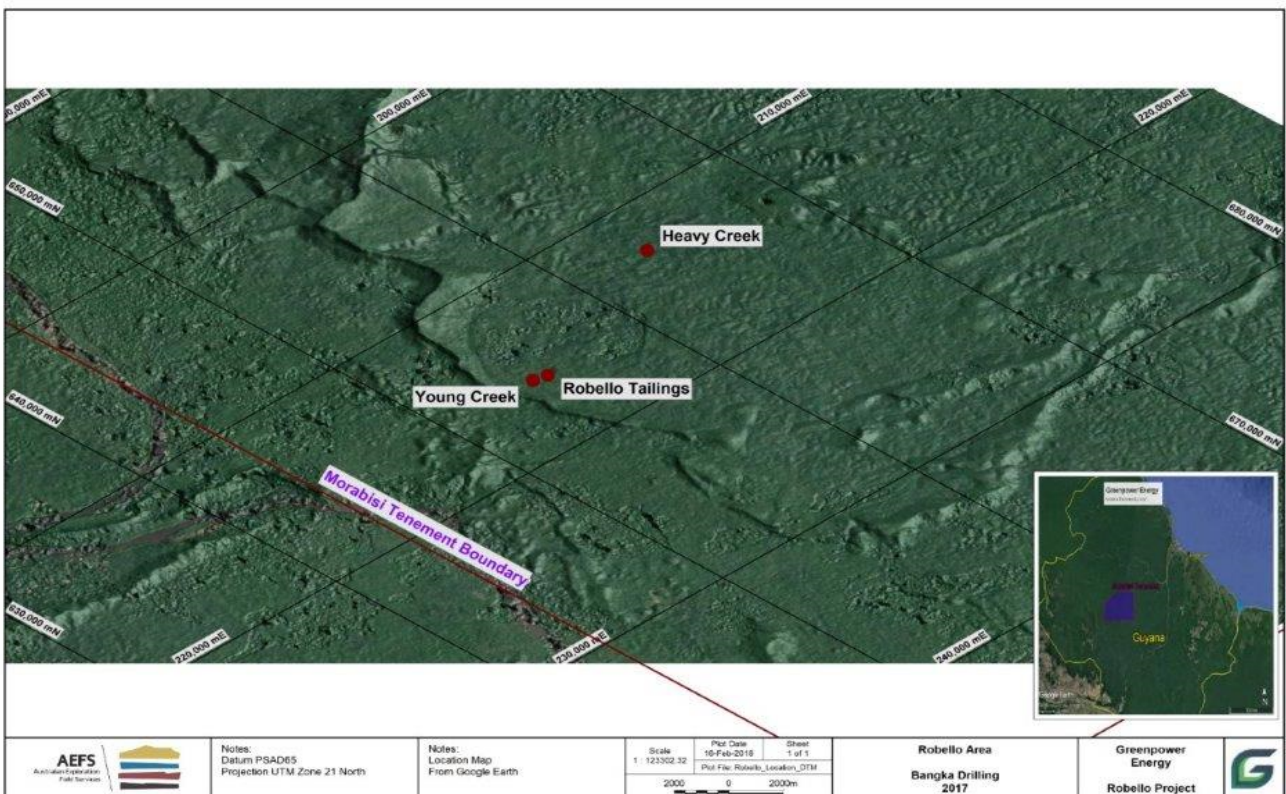
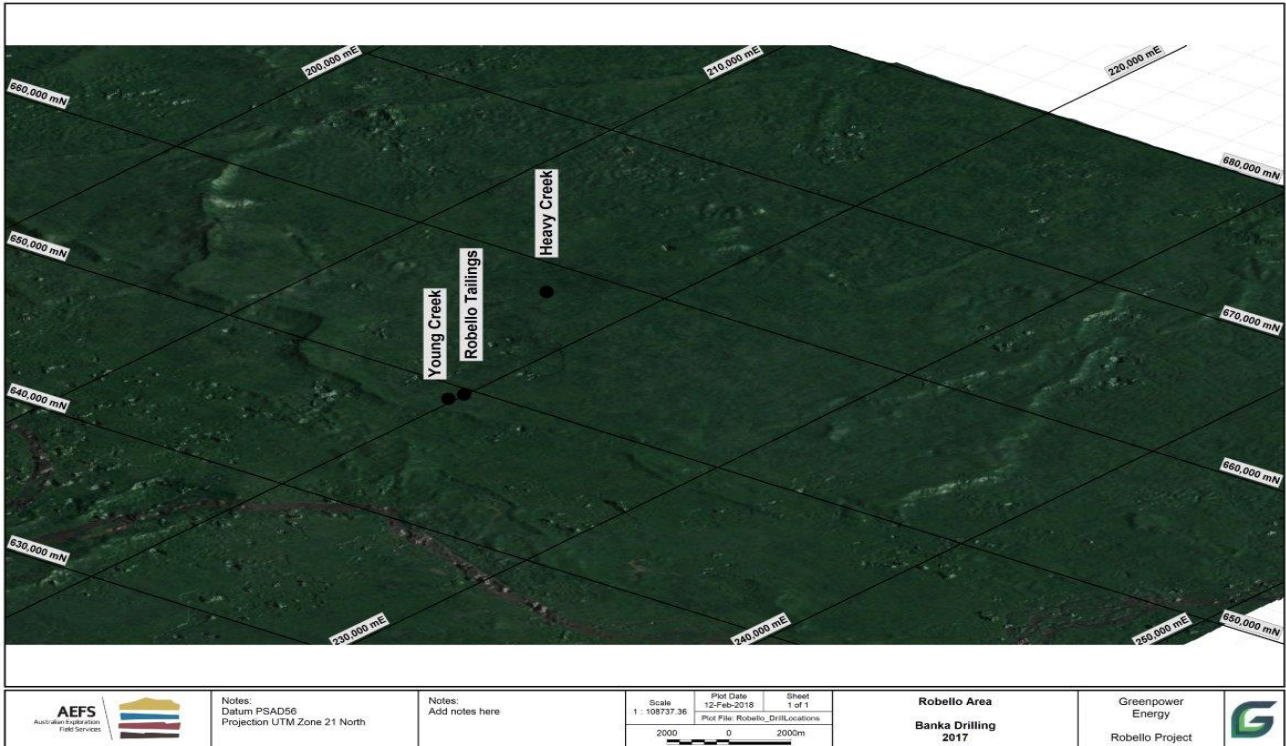
 PO Box 1664 Fremantle WA 6959 Australia

 Lvl 1, 46 Ord Street West Perth WA 6005 Australia

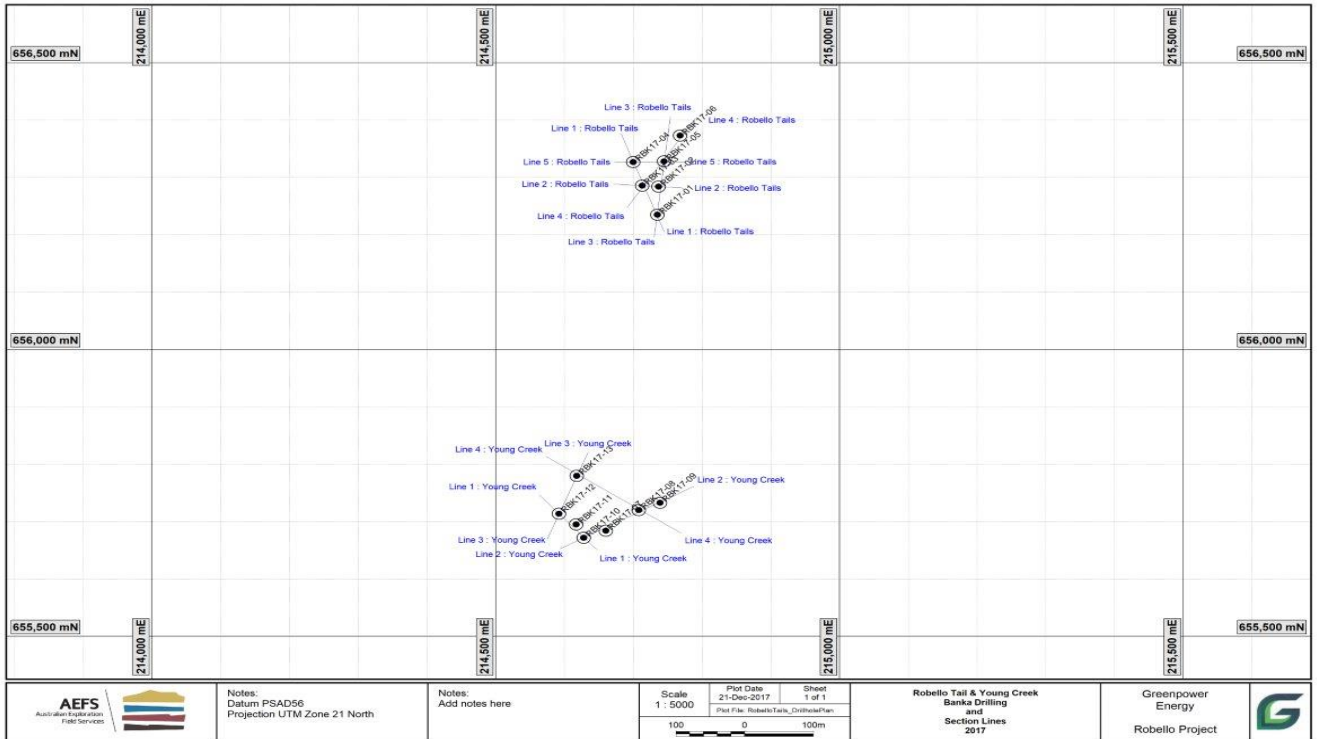
Greenpower Executive Chairman Gerard King added:

“We are sufficiently impressed by the results achieved by such a preliminary investigation, to the point that further evaluation by drilling in due course is justified. Whilst we will now concentrate on the lithium project development, further work on this secondary project will be carried out as soon as time and resources are available.”

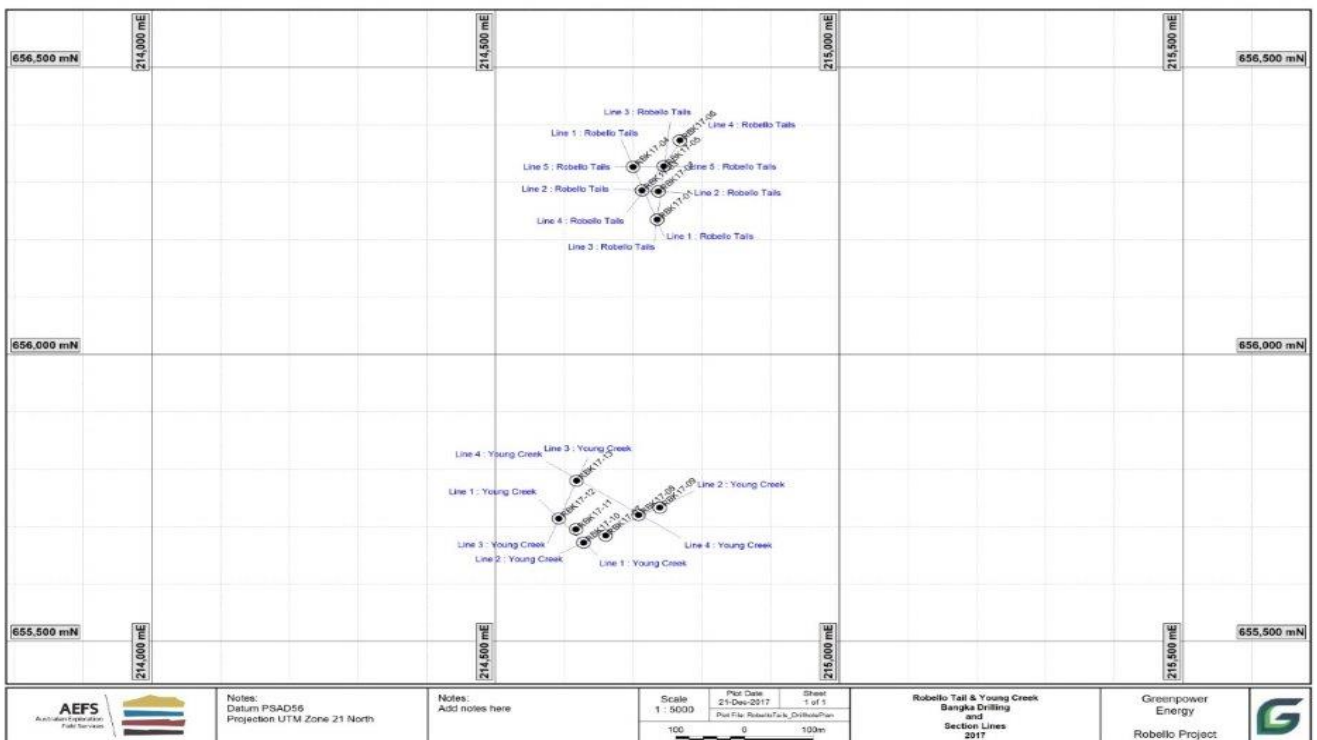
Robello Drill Locations:



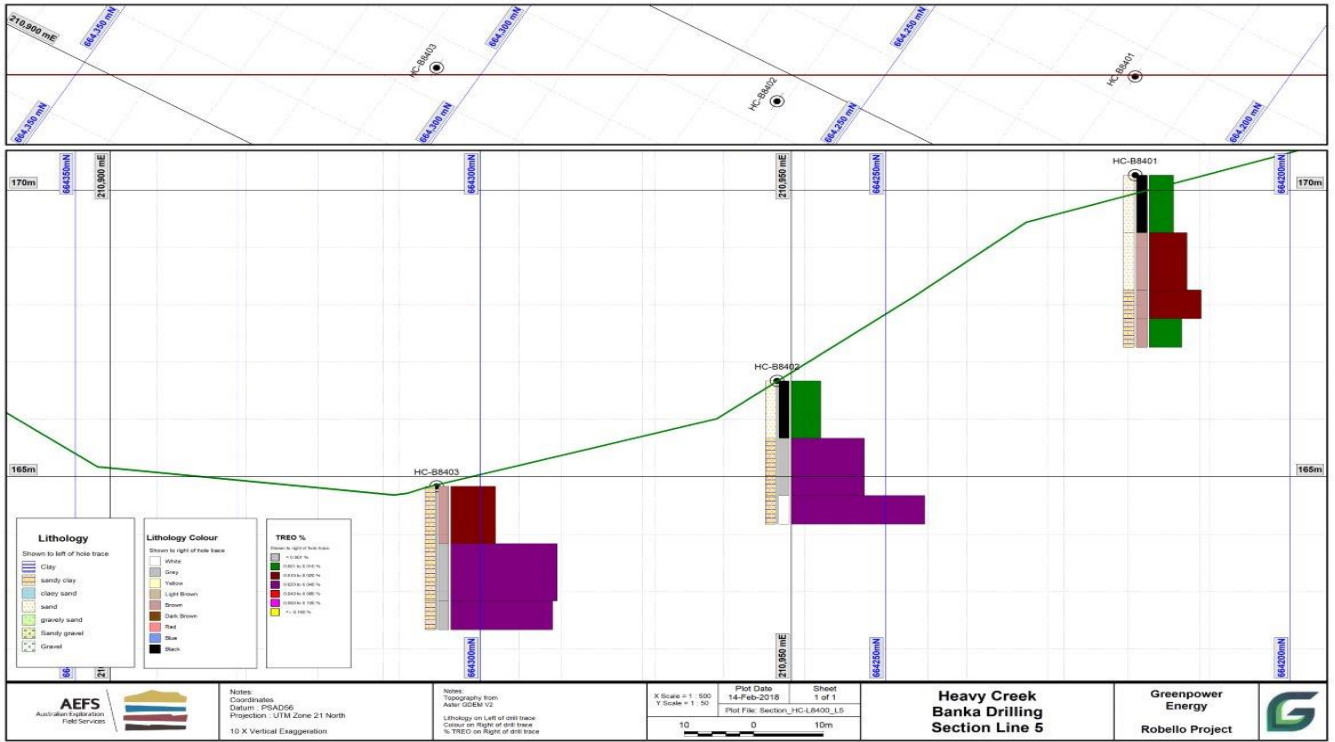
Heavy Creek Drillhole Plan:



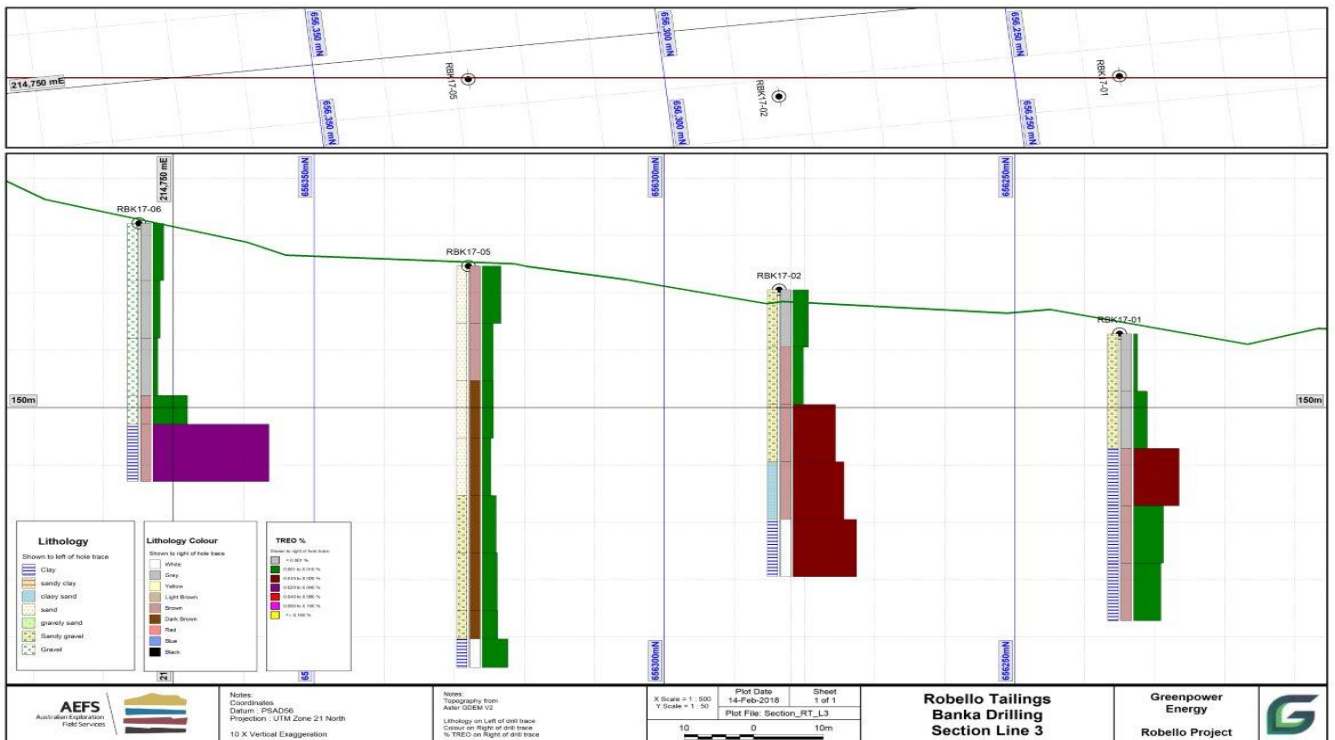
Robello Tails Young Creek Drillhole Plan:



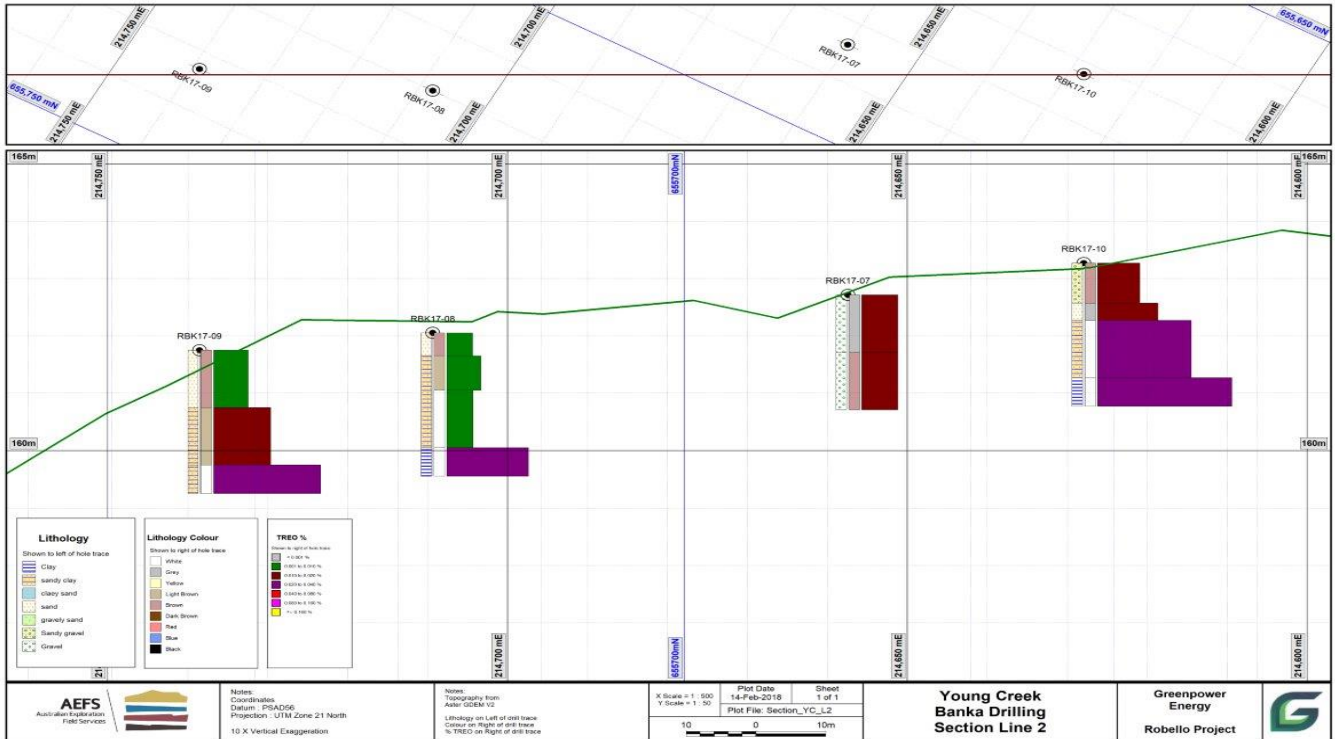
Section HC L5:



Section RC L3:



Section YC L2:



Competent Person Statement

I, John Adrian Watts on 22 February 2018 confirm that:

- I have read and understood the requirements of the 2012 Edition of the Australasian Code for Reporting of Exploration Results, Mineral Resources and Ore Reserves ("2012 JORC Code").
- I am a Competent Person as defined by the 2012 JORC Code, having more than five years' experience which is relevant to the style of mineralisation and type of deposit described in the Report, and to the activity for which I am accepting responsibility.
- I am a Fellow of *The Australasian Institute of Mining and Metallurgy* and a Fellow of the *IOMMM*.
- This statement fairly represents documentation prepared by myself on behalf of my employer, Australian Exploration Field Services Pty Ltd.
- I consent to the release of this document to the ASX.

Sample_Id	Lab_Tag	From	To	Length	Material	Colour	Comments	Weight	Li	0.005_p	Ba	0.5_pp	Ce	0.1_pp	Cr	10_ppm	Cs	0.01_ppj	Dy	0.05_ppj	Er	0.03_ppj	Eu	0.03_p	Ga	0.2_pp	Gd	0.05_p	Hf	0.2_ppr	Ho	0.01_p	La	0.1_ppi	Lu	0.01_ppj	Nb	0.1_pp	Nd	0.1_pp	Pr	0.03_ppj	Rb	0.2_pp	Sm	0.03_r	Sn	5_ppm	Sr	0.1_ppr	Ta	0.1_ppi	Tb	0.01_ppj	Th	0.05_p	Tm	0.01_r	U	0.05_pp	V	10_ppm	W	1_ppm	Y	0.5_ppm	Yb	0.03_p	Zr	2_ppm
RBK08-1	A2021039	0	0.4	0.4	sand	brown		0.0025	31.5	26.5	641	1.13	0.92	0.48	0.47	10.1	1.08	3.5	0.17	14.6	0.08	33.3	9	2.65	24.3	1.43	2.5	5.8	6.8	0.17	6.94	0.08	5.11	29	1	4.8	0.56	105																																
RBK08-2	A2021040	0.4	1	0.6	snd-clay	lt-bwn		0.01	55.3	32.9	565	2.64	1.61	0.91	0.23	29.7	1.49	2.8	0.29	18.2	0.15	76.7	10.4	3.33	114.1	1.84	2.5	3	14.3	0.27	14.18	0.15	20.11	13	2	10	0.94	78																																
RBK08-3	A2021041	1	2	1	snd-clay	white	micas	0.01	64.2	21.3	497	3.35	1.89	1.1	0.43	31.6	1.35	1.1	0.39	11.9	0.19	37.8	6.6	2.13	131.5	1.44	2.5	3.1	3.1	0.28	9.33	0.21	33.19	5	2	12.7	1.24	18																																
RBK08-4	A2021042	2	2.5	0.5	Clay	white	micas	0.011	140.4	88.2	487	3.54	1.94	0.8	0.82	30.9	3.24	7	0.32	48.1	0.13	31.5	30.2	9.12	97.7	4.86	2.5	5.4	3	0.4	27.94	0.15	12.26	24	1	9.7	0.83	203																																
RBK09-1	A2021043	0	1	1	sand	brown		0.0025	28.2	36.4	621	0.97	0.96	0.5	0.34	9.5	1.47	3.5	0.17	19.8	0.07	62.2	12.8	3.73	24.6	1.89	2.5	3.6	15.6	0.2	12.02	0.07	5.16	19	0.5	5	0.56	107																																
RBK09-2	A2021044	1	2	1	snd-clay	lt-bwn		0.009	126.2	62.2	642	3.65	1.05	0.5	0.49	26.5	2	4.8	0.18	37.8	0.07	68.9	20.1	6.33	189.1	2.98	2.5	12.2	12.4	0.21	13.19	0.08	6	20	1	5.2	0.42	130																																
RBK09-3	A2021045	2	2.5	0.5	snd-clay	white		0.006	478	122.2	343	1.77	1.79	0.72	1.2	29.8	3.48	7.8	0.3	66.2	0.09	27.5	38.5	12.03	120	5.26	2.5	36.6	1.9	0.39	26.65	0.11	10.07	25	0.5	8.5	0.61	223																																
RBK10-1	A2021046	0	0.7	0.7	Snd-gvl	brown		0.0025	36.9	46.1	709	0.79	0.95	0.43	0.39	9.3	1.71	7.6	0.14	25.7	0.08	112.4	15.1	4.67	20.7	2.35	2.5	3.5	42.7	0.2	16.19	0.07	6.48	18	1	4.5	0.44	179																																
RBK10-2	A2021047	0.7	1	0.3	sand	grey		0.0025	51.8	67.4	407	1.32	1.14	0.45	0.53	14.8	2.18	6.8	0.17	38.1	0.06	77.9	21.6	6.7	39.1	2.95	2.5	3.4	20	0.23	21.82	0.07	7.2	18	1	5	0.47	215																																
RBK10-3	A2021049	1	2	1	snd-clay	white		0.0025	76.6	104.2	324	4.13	1.95	0.82	1.03	24.8	3.43	7.6	0.35	58.1	0.13	92.3	33.1	10.34	97.7	5.19	2.5	5.8	22.9	0.4	27.33	0.14	7.52	24	0.5	8.7	0.71	229																																
RBK10-4	A2021050	2	2.5	0.5	Clay	white		0.005	110.2	149.3	527	3.05	1.61	0.99	1.41	26.9	4.95	9.3	0.41	83.6	0.12	32.5	49.4	15.01	96.5	7.02	2.5	10.9	2.7	0.57	38.4	0.13	8.38	27	0.5	11	0.9	275																																
RBK11-1	A2021051	0	1	1	sand	brown		0.0025	27.8	29.9	567	1.64	1.19	0.63	0.32	15.8	1.44	6.8	0.23	16.8	0.14	32	10.4	3.18	25.1	1.74	2.5	7.1	5.2	0.21	11.55	0.12	5.94	42	0.5	6.5	0.8	193																																
RBK11-2	A2021052	1	1.8	0.8	Snd-gvl	brown		0.0025	14.9	36.2	569	0.49	0.77	0.38	0.34	3.6	1.3	9.5	0.14	19.9	0.07	306.1	12.4	3.72	11.4	1.78	2.5	2.8	108.2	0.15	10.25	0.07	3.34	12	5	4.3	0.46	226																																
RBK11-3	A2021053	1.8	2.5	0.7	snd-clay	white		0.007	149.2	91.8	434	3.15	1.79	0.67	0.91	32.9	3.03	8.3	0.26	53.3	0.07	177	28.3	8.86	100	3.97	2.5	17	47	0.36	24.82	0.09	9.64	22	1	6.9	0.45	229																																
RBK11-4	A2021054	2.5	3.3	0.8	Clay	white		0.009	136.1	105.2	544	4.57	1.7	0.72	0.77	34.1	3.13	8.1	0.3	59.8	0.08	48.4	33	10.27	145	4.79	2.5	11.4	7.5	0.37	28.28	0.09	8.67	28	0.5	7	0.54	230																																
RBK12-1	A2021055	0	1	1	sand	brown		0.0025	31.3	28	582	1.67	0.63	0.34	0.3	15.7	0.87	5.5	0.13	15.2	0.07	47.3	8.7	2.66	37	1.36	2.5	6.6	14.1	0.13	14.24	0.07	4.15	18	1	3.6	0.41	184																																
RBK12-2	A2021056	1	2	1	snd-clay	white	micas	0.011	101.1	105.2	494	4.87	1.21	0.48	0.65	34.5	2.83	7.4	0.2	59.4	0.09	42.2	31.3	9.89	158.8	4.41	2.5	5.2	3.5	0.26	30.58	0.1	9.72	30	5	4.9	0.54	210																																
RBK12-3	A2021057	2	2.5	0.5	Clay	white	micas	0.01	104.5	121.7	416	3.64	1.26	0.56	0.67	34.4	3.22	9.4	0.21	69.2	0.09	29.6	38.6	11.99	103.3	5.09	2.5	3.7	1.6	0.3	44.07	0.09	9.89	35	1	5.4	0.59	304																																
RBK13-1	A2021059	0	1	1	sand	brown		0.0025	60.2	62.8	534	3.96	1.24	0.6	1	28.8	2.23	10	0.22	43.3	0.12	68.9	25.5	7.77	48.6	3.55	2.5	20.4	6.8	0.24	18.16	0.13	6.58	63	1	6.6	0.79	319																																
RBK13-2	A2021060	1	2	1	snd-clay	red	micas	0.007	60.6	31.9	532	3.19	0.79	0.55	0.35	43.4	0.94	8	0.17	11.6	0.1	39.6	6.6	2	86.3	1.1	2.5	10	4.2	0.13	17.21	0.09	19.27	41	0.5	4.9	0.61	264																																
RBK13-3	A2021061	2	3	1	snd-clay	red	micas	0.011	41.2	24.6	584	4.71	1.87	1.22	0.45	47.7	1.27	6	0.41	9.1	0.23	54.3	5.8	1.72	152.2	1.3	2.5	21	7.7	0.29	10.19	0.22	29.83	27	15	12.5	1.42	183																																
RBK13-4	A2021062	3	4	1	snd-clay	red	micas	0.011	63.8	34.4	251	6.41	1.13	0.45	0.42	44.9	1.19	5.1	0.17	16.4	0.08	56	8	2.83	230.5	1.47	2.5	12.2	7.2	0.18	7.44	0.08	26.28	20	4	4.6	0.6	118																																
RBK13-5	A2021063	4	5	1	snd-clay	red	micas	0.009	113.5	72	362	3.99	1.22	0.53	0.54	32.9	3.69	6.4	0.21	33.9	0.1	25.3	20.4	6.48	145.1	2.88	2.5	9.2	2.6	0.26	7.77	0.07	16.01	25	0.5	5.7	0.56	150																																
RBK13-6	A2021064	5	6	1	snd-clay	red	micas	0.01	137.3	66.1	443	5.63	0.91	0.35	0.54	37	3.13	5.9	0.14	31.2	0.05	33.6	18.1	5.84	200.2	2.73	6	11.9	4.2	0.17	9.25	0.05	21.49	26	0.5	3.7	0.35	145																																

JORC Code, 2012 Edition – Table 1 report template

Section 1 Sampling Techniques and Data

(Criteria in this section apply to all succeeding sections.)

Criteria	JORC Code explanation	Commentary
Sampling techniques	<ul style="list-style-type: none"> Nature and quality of sampling (eg cut channels, random chips, or specific specialised industry standard measurement tools appropriate to the minerals under investigation, such as down hole gamma sondes, or handheld XRF instruments, etc). These examples should not be taken as limiting the broad meaning of sampling. Include reference to measures taken to ensure sample representivity and the appropriate calibration of any measurement tools or systems used. Aspects of the determination of mineralisation that are Material to the Public Report. In cases where 'industry standard' work has been done this would be relatively simple (eg 'reverse circulation drilling was used to obtain 1 m samples from which 3 kg was pulverised to produce a 30 g charge for fire assay'). In other cases more explanation may be required, such as where there is coarse gold that has inherent sampling problems. Unusual commodities or mineralisation types (eg submarine nodules) may warrant disclosure of detailed information. 	<ul style="list-style-type: none"> Banka Drilling
Drilling techniques	<ul style="list-style-type: none"> Drill type (eg core, reverse circulation, open-hole hammer, rotary air blast, auger, Banka, sonic, etc) and details (eg core diameter, triple or standard tube, depth of diamond tails, face-sampling bit or other type, whether core is oriented and if so, by what method, etc). 	<ul style="list-style-type: none"> Banka Drilling, 6ins (14.7mm) diameter drillhole. Sampling at 1m interval or part thereof at refusal
Drill sample recovery	<ul style="list-style-type: none"> Method of recording and assessing core and chip sample recoveries and results assessed. Measures taken to maximise sample recovery and ensure representative nature of the samples. Whether a relationship exists between sample recovery and grade and whether sample bias may have occurred due to preferential loss/gain of fine/coarse material. 	<ul style="list-style-type: none"> Sampling depths measured during drilling. Samples weighed on collection Further work required to establish relationship between recovery and analytical grade
Logging	<ul style="list-style-type: none"> Whether core and chip samples have been geologically and geotechnically logged to a level of detail to support appropriate Mineral Resource estimation, mining studies and metallurgical studies. Whether logging is qualitative or quantitative in nature. Core (or costean, channel, etc) photography. The total length and percentage of the relevant intersections logged. 	<ul style="list-style-type: none"> Samples geologically logged during drilling sufficiently to support on-going studies Logging qualitative All drilled intersections logged

Criteria	JORC Code explanation	Commentary
Sub-sampling techniques and sample preparation	<ul style="list-style-type: none"> • <i>If core, whether cut or sawn and whether quarter, half or all core taken.</i> • <i>If non-core, whether riffled, tube sampled, rotary split, etc and whether sampled wet or dry.</i> • <i>For all sample types, the nature, quality and appropriateness of the sample preparation technique.</i> • <i>Quality control procedures adopted for all sub-sampling stages to maximise representivity of samples.</i> • <i>Measures taken to ensure that the sampling is representative of the in situ material collected, including for instance results for field duplicate/second-half sampling.</i> • <i>Whether sample sizes are appropriate to the grain size of the material being sampled.</i> 	<ul style="list-style-type: none"> • Samples split in field. Bag farm established at camp site • Samples riffle split • Large sample size to ensure representation of recovered material • Reference Samples included in the field for Laboratory submissions • Blank Samples included in the field for Laboratory submissions • Sample sizes appropriate to grain size of recovered material
Quality of assay data and laboratory tests	<ul style="list-style-type: none"> • <i>The nature, quality and appropriateness of the assaying and laboratory procedures used and whether the technique is considered partial or total.</i> • <i>For geophysical tools, spectrometers, handheld XRF instruments, etc, the parameters used in determining the analysis including instrument make and model, reading times, calibrations factors applied and their derivation, etc.</i> • <i>Nature of quality control procedures adopted (eg standards, blanks, duplicates, external laboratory checks) and whether acceptable levels of accuracy (ie lack of bias) and precision have been established.</i> 	<ul style="list-style-type: none"> • Li analysis by Sodium Peroxide Fusion, ICP-ES. REE Analysis by Lithium Metaborate Fusion, ICP-MS • External laboratory checks via submission of duplicate samples
Verification of sampling and assaying	<ul style="list-style-type: none"> • <i>The verification of significant intersections by either independent or alternative company personnel.</i> • <i>The use of twinned holes.</i> • <i>Documentation of primary data, data entry procedures, data verification, data storage (physical and electronic) protocols.</i> • <i>Discuss any adjustment to assay data.</i> 	<ul style="list-style-type: none"> • All samples submitted to MS Analytical Vancouver BC. Check samples of pulps will be submitted from MS Analytical Georgetown to Nagrom Laboratories, Perth, WA
Location of data points	<ul style="list-style-type: none"> • <i>Accuracy and quality of surveys used to locate drill holes (collar and down-hole surveys), trenches, mine workings and other locations used in Mineral Resource estimation.</i> • <i>Specification of the grid system used.</i> • <i>Quality and adequacy of topographic control.</i> 	<ul style="list-style-type: none"> • Collar co-ordinates established by GPS. UTM projection, Zone 21 North, PSAD56 Datum used. Topographic control by available topographic mapping, checked by GPS
Data spacing and distribution	<ul style="list-style-type: none"> • <i>Data spacing for reporting of Exploration Results.</i> • <i>Whether the data spacing and distribution is sufficient to establish the degree of geological and grade continuity appropriate for the Mineral Resource and Ore Reserve estimation procedure(s) and classifications applied.</i> 	<ul style="list-style-type: none"> • Sample reporting at 1m interval, or less when refusal depth resulted in sample of less than 1m • Data acquisition to date is insufficient for Mineral Resource and Ore Reserve estimation at this preliminary exploration phase.

Criteria	JORC Code explanation	Commentary
	<ul style="list-style-type: none"> • <i>Whether sample compositing has been applied.</i> 	
<p><i>Orientation of data in relation to geological structure</i></p>	<ul style="list-style-type: none"> • <i>Whether the orientation of sampling achieves unbiased sampling of possible structures and the extent to which this is known, considering the deposit type.</i> • <i>If the relationship between the drilling orientation and the orientation of key mineralised structures is considered to have introduced a sampling bias, this should be assessed and reported if material.</i> 	<ul style="list-style-type: none"> • Sample orientation not possible due to drilling method. • Sample bias not considered an issue
<p><i>Sample security</i></p>	<ul style="list-style-type: none"> • <i>The measures taken to ensure sample security.</i> 	<ul style="list-style-type: none"> • Drill samples collected at the drill sites, moved to and stored securely at base camp. Samples split with riffle splitter, half sample shipped to Georgetown by river transport, met by a GSM representative and taken directly to MS Analytical's Georgetown Laboratory. MS Analytical's security protocols then apply. Samples currently analysed by MS Analytical in Vancouver BC
<p><i>Audits or reviews</i></p>	<ul style="list-style-type: none"> • <i>The results of any audits or reviews of sampling techniques and data.</i> 	<ul style="list-style-type: none"> • Too early to review. Samples include blanks, standards.

Section 2 Reporting of Exploration Results

(Criteria listed in the preceding section also apply to this section.)

Criteria	JORC Code explanation	Commentary
<i>Mineral tenement and land tenure status</i>	<ul style="list-style-type: none"> • <i>Type, reference name/number, location and ownership including agreements or material issues with third parties such as joint ventures, partnerships, overriding royalties, native title interests, historical sites, wilderness or national park and environmental settings.</i> • <i>The security of the tenure held at the time of reporting along with any known impediments to obtaining a licence to operate in the area.</i> 	<ul style="list-style-type: none"> • Reconnaissance Geophysical and Geological Survey, Morabisi Area, Mining District#3, Region 7 Guyana. • The tenement has an area of 713,109 acres (288,580 ha) • Guyana Strategic Metals in Joint Venture with Greenpower Energy Ltd • A two-year exploration programme has been approved by Guyana Geology and Mining Commission • There are no known impediments to obtaining a licence to operate in the area
<i>Exploration done by other parties</i>	<ul style="list-style-type: none"> • <i>Acknowledgment and appraisal of exploration by other parties.</i> 	<ul style="list-style-type: none"> • GGMC – Summary of Geochemistry, Geology and Structure, June 2002
<i>Geology</i>	<ul style="list-style-type: none"> • <i>Deposit type, geological setting and style of mineralisation.</i> 	<ul style="list-style-type: none"> • Alluvial REE
<i>Drill hole Information</i>	<ul style="list-style-type: none"> • <i>A summary of all information material to the understanding of the exploration results including a tabulation of the following information for all Material drill holes:</i> <ul style="list-style-type: none"> ○ <i>easting and northing of the drill hole collar</i> ○ <i>elevation or RL (Reduced Level – elevation above sea level in metres) of the drill hole collar</i> ○ <i>dip and azimuth of the hole</i> ○ <i>down hole length and interception depth</i> ○ <i>hole length.</i> • <i>If the exclusion of this information is justified on the basis that the information is not Material and this exclusion does not detract from the understanding of the report, the Competent Person should clearly explain why this is the case.</i> 	<ul style="list-style-type: none"> • Information included in tables accompanying this report
<i>Data aggregation methods</i>	<ul style="list-style-type: none"> • <i>In reporting Exploration Results, weighting averaging techniques, maximum and/or minimum grade truncations (eg cutting of high grades) and cut-off grades are usually Material and should be stated.</i> • <i>Where aggregate intercepts incorporate short lengths of high grade results and longer lengths of low grade results, the procedure used for such aggregation should be stated and some typical examples of such</i> 	<ul style="list-style-type: none"> • Previous Phase 1 exploration by the Joint Venturers GSM and Greenpower • No sample aggregation reporting has taken place. • TREO values calculated from analytical elemental values

Criteria	JORC Code explanation	Commentary
	<p><i>aggregations should be shown in detail.</i></p> <ul style="list-style-type: none"> <i>The assumptions used for any reporting of metal equivalent values should be clearly stated.</i> 	
<p><i>Relationship between mineralisation widths and intercept lengths</i></p>	<ul style="list-style-type: none"> <i>These relationships are particularly important in the reporting of Exploration Results.</i> <i>If the geometry of the mineralisation with respect to the drill hole angle is known, its nature should be reported.</i> <i>If it is not known and only the down hole lengths are reported, there should be a clear statement to this effect (eg 'down hole length, true width not known').</i> 	<ul style="list-style-type: none"> All drilling is vertical. Data from drill hole fences yet to be assessed
<p><i>Diagrams</i></p>	<ul style="list-style-type: none"> <i>Appropriate maps and sections (with scales) and tabulations of intercepts should be included for any significant discovery being reported. These should include, but not be limited to a plan view of drill hole collar locations and appropriate sectional views.</i> 	<ul style="list-style-type: none"> Drill hole locations included on accompanying maps. Representative drill hole sections for each of the areas drilled included in report.
<p><i>Balanced reporting</i></p>	<ul style="list-style-type: none"> <i>Where comprehensive reporting of all Exploration Results is not practicable, representative reporting of both low and high grades and/or widths should be practiced to avoid misleading reporting of Exploration Results.</i> 	<ul style="list-style-type: none"> Early in the exploration programme. Sections included as representative of each area drilled
<p><i>Other substantive exploration data</i></p>	<ul style="list-style-type: none"> <i>Other exploration data, if meaningful and material, should be reported including (but not limited to): geological observations; geophysical survey results; geochemical survey results; bulk samples – size and method of treatment; metallurgical test results; bulk density, groundwater, geotechnical and rock characteristics; potential deleterious or contaminating substances.</i> 	<ul style="list-style-type: none"> Phase 1 exploration has been previously reported
<p><i>Further work</i></p>	<ul style="list-style-type: none"> <i>The nature and scale of planned further work (eg tests for lateral extensions or depth extensions or large-scale step-out drilling).</i> <i>Diagrams clearly highlighting the areas of possible extensions, including the main geological interpretations and future drilling areas, provided this information is not commercially sensitive.</i> 	<ul style="list-style-type: none"> Based on analytical results from current drill programme, initial metallurgical assessment planned. Extensions to drilled areas not known at this stage. Will be the subject of future investigation

Section 3 Estimation and Reporting of Mineral Resources

(Criteria listed in section 1, and where relevant in section 2, also apply to this section.)

Criteria	JORC Code explanation	Commentary
<i>Database integrity</i>	<ul style="list-style-type: none"> Measures taken to ensure that data has not been corrupted by, for example, transcription or keying errors, between its initial collection and its use for Mineral Resource estimation purposes. Data validation procedures used. 	<ul style="list-style-type: none"> Currently not applicable
<i>Site visits</i>	<ul style="list-style-type: none"> Comment on any site visits undertaken by the Competent Person and the outcome of those visits. If no site visits have been undertaken indicate why this is the case. 	<ul style="list-style-type: none"> Competent Person overflew the area 5 July 2017 Ground access at that time not possible because of late wet season flooding. Site inspection of the Robello Creek area made during a site visit, 23-27 September 2017
<i>Geological interpretation</i>	<ul style="list-style-type: none"> Confidence in (or conversely, the uncertainty of) the geological interpretation of the mineral deposit. Nature of the data used and of any assumptions made. The effect, if any, of alternative interpretations on Mineral Resource estimation. The use of geology in guiding and controlling Mineral Resource estimation. The factors affecting continuity both of grade and geology. 	<ul style="list-style-type: none"> Reasonable confidence in geological model Historical data, GSM Greenpower JV data used for assumptions No Mineral Resource estimations have been made due to the early stage of exploration
<i>Dimensions</i>	<ul style="list-style-type: none"> The extent and variability of the Mineral Resource expressed as length (along strike or otherwise), plan width, and depth below surface to the upper and lower limits of the Mineral Resource. 	<ul style="list-style-type: none"> Not applicable.
<i>Estimation and modelling techniques</i>	<ul style="list-style-type: none"> The nature and appropriateness of the estimation technique(s) applied and key assumptions, including treatment of extreme grade values, domaining, interpolation parameters and maximum distance of extrapolation from data points. If a computer assisted estimation method was chosen include a description of computer software and parameters used. The availability of check estimates, previous estimates and/or mine production records and whether the Mineral Resource estimate takes appropriate account of such data. The assumptions made regarding recovery of by-products. Estimation of deleterious elements or other non-grade variables of economic significance (eg sulphur for acid mine drainage characterisation). In the case of block model interpolation, the block size in relation to the average sample spacing and the search employed. 	<ul style="list-style-type: none"> None of the following in this section are applicable

Criteria	JORC Code explanation	Commentary
	<ul style="list-style-type: none"> • Any assumptions behind modelling of selective mining units. • Any assumptions about correlation between variables. • Description of how the geological interpretation was used to control the resource estimates. • Discussion of basis for using or not using grade cutting or capping. • The process of validation, the checking process used, the comparison of model data to drill hole data, and use of reconciliation data if available. 	
Moisture	<ul style="list-style-type: none"> • Whether the tonnages are estimated on a dry basis or with natural moisture, and the method of determination of the moisture content. 	<ul style="list-style-type: none"> • Not applicable
Cut-off parameters	<ul style="list-style-type: none"> • The basis of the adopted cut-off grade(s) or quality parameters applied. 	<ul style="list-style-type: none"> • Not applicable
Mining factors or assumptions	<ul style="list-style-type: none"> • Assumptions made regarding possible mining methods, minimum mining dimensions and internal (or, if applicable, external) mining dilution. It is always necessary as part of the process of determining reasonable prospects for eventual economic extraction to consider potential mining methods, but the assumptions made regarding mining methods and parameters when estimating Mineral Resources may not always be rigorous. Where this is the case, this should be reported with an explanation of the basis of the mining assumptions made. 	<ul style="list-style-type: none"> • Not applicable
Metallurgical factors or assumptions	<ul style="list-style-type: none"> • The basis for assumptions or predictions regarding metallurgical amenability. It is always necessary as part of the process of determining reasonable prospects for eventual economic extraction to consider potential metallurgical methods, but the assumptions regarding metallurgical treatment processes and parameters made when reporting Mineral Resources may not always be rigorous. Where this is the case, this should be reported with an explanation of the basis of the metallurgical assumptions made. 	<ul style="list-style-type: none"> • Not applicable
Environmental factors or assumptions	<ul style="list-style-type: none"> • Assumptions made regarding possible waste and process residue disposal options. It is always necessary as part of the process of determining reasonable prospects for eventual economic extraction to consider the potential environmental impacts of the mining and processing operation. While at this stage the determination of potential environmental impacts, particularly for a greenfields project, may not always be well advanced, the status of early consideration of these potential environmental impacts should be reported. Where these aspects have not been considered this should be reported with an explanation of the environmental assumptions made. 	<ul style="list-style-type: none"> • Not applicable

Criteria	JORC Code explanation	Commentary
<i>Bulk density</i>	<ul style="list-style-type: none"> • <i>Whether assumed or determined. If assumed, the basis for the assumptions. If determined, the method used, whether wet or dry, the frequency of the measurements, the nature, size and representativeness of the samples.</i> • <i>The bulk density for bulk material must have been measured by methods that adequately account for void spaces (vugs, porosity, etc), moisture and differences between rock and alteration zones within the deposit.</i> • <i>Discuss assumptions for bulk density estimates used in the evaluation process of the different materials.</i> 	<ul style="list-style-type: none"> • Not applicable
<i>Classification</i>	<ul style="list-style-type: none"> • <i>The basis for the classification of the Mineral Resources into varying confidence categories.</i> • <i>Whether appropriate account has been taken of all relevant factors (ie relative confidence in tonnage/grade estimations, reliability of input data, confidence in continuity of geology and metal values, quality, quantity and distribution of the data).</i> • <i>Whether the result appropriately reflects the Competent Person's view of the deposit.</i> 	<ul style="list-style-type: none"> • Not applicable
<i>Audits or reviews</i>	<ul style="list-style-type: none"> • <i>The results of any audits or reviews of Mineral Resource estimates.</i> 	<ul style="list-style-type: none"> • Not applicable
<i>Discussion of relative accuracy/ confidence</i>	<ul style="list-style-type: none"> • <i>Where appropriate a statement of the relative accuracy and confidence level in the Mineral Resource estimate using an approach or procedure deemed appropriate by the Competent Person. For example, the application of statistical or geostatistical procedures to quantify the relative accuracy of the resource within stated confidence limits, or, if such an approach is not deemed appropriate, a qualitative discussion of the factors that could affect the relative accuracy and confidence of the estimate.</i> • <i>The statement should specify whether it relates to global or local estimates, and, if local, state the relevant tonnages, which should be relevant to technical and economic evaluation. Documentation should include assumptions made and the procedures used.</i> • <i>These statements of relative accuracy and confidence of the estimate should be compared with production data, where available.</i> 	<ul style="list-style-type: none"> • None of the following in this section are applicable

Section 4 Estimation and Reporting of Ore Reserves

(Criteria listed in section 1, and where relevant in sections 2 and 3, also apply to this section.)

Criteria	JORC Code explanation	Commentary
<i>Mineral Resource estimate for conversion to Ore Reserves</i>	<ul style="list-style-type: none"> <i>Description of the Mineral Resource estimate used as a basis for the conversion to an Ore Reserve.</i> <i>Clear statement as to whether the Mineral Resources are reported additional to, or inclusive of, the Ore Reserves.</i> 	<ul style="list-style-type: none"> Not applicable
<i>Site visits</i>	<ul style="list-style-type: none"> <i>Comment on any site visits undertaken by the Competent Person and the outcome of those visits.</i> <i>If no site visits have been undertaken indicate why this is the case.</i> 	<ul style="list-style-type: none"> Competent Person overflew the area 5 July 2017 Ground access at that time not possible because of late wet season flooding. Competent Person visited Turesi Trenches, Banakarau Trenches, Robello Creek Old Mine, 23-27 September 2017
<i>Study status</i>	<ul style="list-style-type: none"> <i>The type and level of study undertaken to enable Mineral Resources to be converted to Ore Reserves.</i> <i>The Code requires that a study to at least Pre-Feasibility Study level has been undertaken to convert Mineral Resources to Ore Reserves. Such studies will have been carried out and will have determined a mine plan that is technically achievable and economically viable, and that material Modifying Factors have been considered.</i> 	<ul style="list-style-type: none"> Not applicable
<i>Cut-off parameters</i>	<ul style="list-style-type: none"> <i>The basis of the cut-off grade(s) or quality parameters applied.</i> 	<ul style="list-style-type: none"> Not applicable
<i>Mining factors or assumptions</i>	<ul style="list-style-type: none"> <i>The method and assumptions used as reported in the Pre-Feasibility or Feasibility Study to convert the Mineral Resource to an Ore Reserve (i.e. either by application of appropriate factors by optimisation or by preliminary or detailed design).</i> <i>The choice, nature and appropriateness of the selected mining method(s) and other mining parameters including associated design issues such as pre-strip, access, etc.</i> <i>The assumptions made regarding geotechnical parameters (eg pit slopes, stope sizes, etc), grade control and pre-production drilling.</i> <i>The major assumptions made and Mineral Resource model used for pit and stope optimisation (if appropriate).</i> <i>The mining dilution factors used.</i> <i>The mining recovery factors used.</i> <i>Any minimum mining widths used.</i> <i>The manner in which Inferred Mineral Resources are utilised in mining studies and the sensitivity of</i> 	<ul style="list-style-type: none"> None of the following in this section are applicable

Criteria	JORC Code explanation	Commentary
	<p><i>the outcome to their inclusion.</i></p> <ul style="list-style-type: none"> • <i>The infrastructure requirements of the selected mining methods.</i> 	
Metallurgical factors or assumptions	<ul style="list-style-type: none"> • <i>The metallurgical process proposed and the appropriateness of that process to the style of mineralisation.</i> • <i>Whether the metallurgical process is well-tested technology or novel in nature.</i> • <i>The nature, amount and representativeness of metallurgical test work undertaken, the nature of the metallurgical domaining applied and the corresponding metallurgical recovery factors applied.</i> • <i>Any assumptions or allowances made for deleterious elements.</i> • <i>The existence of any bulk sample or pilot scale test work and the degree to which such samples are considered representative of the orebody as a whole.</i> • <i>For minerals that are defined by a specification, has the ore reserve estimation been based on the appropriate mineralogy to meet the specifications?</i> 	<ul style="list-style-type: none"> • None of the following in this section are applicable
Environmental	<ul style="list-style-type: none"> • <i>The status of studies of potential environmental impacts of the mining and processing operation. Details of waste rock characterisation and the consideration of potential sites, status of design options considered and, where applicable, the status of approvals for process residue storage and waste dumps should be reported.</i> 	<ul style="list-style-type: none"> • Not applicable
Infrastructure	<ul style="list-style-type: none"> • <i>The existence of appropriate infrastructure: availability of land for plant development, power, water, transportation (particularly for bulk commodities), labour, accommodation; or the ease with which the infrastructure can be provided, or accessed.</i> 	<ul style="list-style-type: none"> • Not applicable. All infrastructure relates to preliminary exploration and is supplied by the GSM/ Greenpower Joint Venture
Costs	<ul style="list-style-type: none"> • <i>The derivation of, or assumptions made, regarding projected capital costs in the study.</i> • <i>The methodology used to estimate operating costs.</i> • <i>Allowances made for the content of deleterious elements.</i> • <i>The source of exchange rates used in the study.</i> • <i>Derivation of transportation charges.</i> • <i>The basis for forecasting or source of treatment and refining charges, penalties for failure to meet specification, etc.</i> • <i>The allowances made for royalties payable, both Government and private.</i> 	<ul style="list-style-type: none"> • None of the following in this section are applicable
Revenue factors	<ul style="list-style-type: none"> • <i>The derivation of, or assumptions made regarding revenue factors including head grade, metal or commodity price(s) exchange rates,</i> 	<ul style="list-style-type: none"> • Not applicable

Criteria	JORC Code explanation	Commentary
	<p><i>transportation and treatment charges, penalties, net smelter returns, etc.</i></p> <ul style="list-style-type: none"> <i>The derivation of assumptions made of metal or commodity price(s), for the principal metals, minerals and co-products.</i> 	
Market assessment	<ul style="list-style-type: none"> <i>The demand, supply and stock situation for the particular commodity, consumption trends and factors likely to affect supply and demand into the future.</i> <i>A customer and competitor analysis along with the identification of likely market windows for the product.</i> <i>Price and volume forecasts and the basis for these forecasts.</i> <i>For industrial minerals the customer specification, testing and acceptance requirements prior to a supply contract.</i> 	<ul style="list-style-type: none"> Not applicable
Economic	<ul style="list-style-type: none"> <i>The inputs to the economic analysis to produce the net present value (NPV) in the study, the source and confidence of these economic inputs including estimated inflation, discount rate, etc.</i> <i>NPV ranges and sensitivity to variations in the significant assumptions and inputs.</i> 	<ul style="list-style-type: none"> Not applicable
Social	<ul style="list-style-type: none"> <i>The status of agreements with key stakeholders and matters leading to social licence to operate.</i> 	<ul style="list-style-type: none">
Other	<ul style="list-style-type: none"> <i>To the extent relevant, the impact of the following on the project and/or on the estimation and classification of the Ore Reserves:</i> <i>Any identified material naturally occurring risks.</i> <i>The status of material legal agreements and marketing arrangements.</i> <i>The status of governmental agreements and approvals critical to the viability of the project, such as mineral tenement status, and government and statutory approvals. There must be reasonable grounds to expect that all necessary Government approvals will be received within the timeframes anticipated in the Pre-Feasibility or Feasibility study. Highlight and discuss the materiality of any unresolved matter that is dependent on a third party on which extraction of the reserve is contingent.</i> 	<ul style="list-style-type: none"> None of the following in this section are applicable
Classification	<ul style="list-style-type: none"> <i>The basis for the classification of the Ore Reserves into varying confidence categories.</i> <i>Whether the result appropriately reflects the Competent Person's view of the deposit.</i> <i>The proportion of Probable Ore Reserves that have been derived from Measured Mineral Resources (if any).</i> 	<ul style="list-style-type: none"> Not applicable
Audits or reviews	<ul style="list-style-type: none"> <i>The results of any audits or reviews of Ore Reserve estimates.</i> 	<ul style="list-style-type: none"> Not applicable

Criteria	JORC Code explanation	Commentary
<p><i>Discussion of relative accuracy/ confidence</i></p>	<ul style="list-style-type: none"> • <i>Where appropriate a statement of the relative accuracy and confidence level in the Ore Reserve estimate using an approach or procedure deemed appropriate by the Competent Person. For example, the application of statistical or geostatistical procedures to quantify the relative accuracy of the reserve within stated confidence limits, or, if such an approach is not deemed appropriate, a qualitative discussion of the factors which could affect the relative accuracy and confidence of the estimate.</i> • <i>The statement should specify whether it relates to global or local estimates, and, if local, state the relevant tonnages, which should be relevant to technical and economic evaluation. Documentation should include assumptions made and the procedures used.</i> • <i>Accuracy and confidence discussions should extend to specific discussions of any applied Modifying Factors that may have a material impact on Ore Reserve viability, or for which there are remaining areas of uncertainty at the current study stage.</i> • <i>It is recognised that this may not be possible or appropriate in all circumstances. These statements of relative accuracy and confidence of the estimate should be compared with production data, where available.</i> 	<ul style="list-style-type: none"> • <i>None of the following in this section are applicable</i>