



# Fast-track development in the world's most prolific lithium region

BMO Global Metals & Mining Conference Presentation – February 2018

ASX Code: AGY



[www.argosyminerals.com.au](http://www.argosyminerals.com.au)

# Disclaimer



This presentation is for information purposes only. Neither this presentation nor the information contained in it constitutes an offer, invitation, solicitation or recommendation in relation to the purchase or sale of shares in any jurisdiction. This presentation may not be distributed in any jurisdiction except in accordance with the legal requirements applicable in such jurisdiction. Recipients should inform themselves of the restrictions that apply in their own jurisdiction. A failure to do so may result in a violation of securities laws in such jurisdiction. This presentation does not constitute financial product advice and has been prepared without taking into account the recipient's investment objectives, financial circumstances or particular needs and the opinions and recommendations in this presentation are not intended to represent recommendations of particular investments to particular persons. Recipients should seek professional advice when deciding if an investment is appropriate. All securities transactions involve risks, which include (among others) the risk of adverse or unanticipated market, financial or political developments.

Certain statements contained in this presentation, including information as to the future financial or operating performance of Argosy Minerals Limited ("Argosy" or "AGY") and its projects, are forward-looking statements. Such forward-looking statements: are necessarily based upon a number of estimates and assumptions that, whilst considered reasonable by Argosy, are inherently subject to significant technical, business, economic, competitive, political and social uncertainties and contingencies; involve known and unknown risks and uncertainties that could cause actual events or results to differ materially from estimated or anticipated events or results reflected in such forward-looking statements; and may include, among other things, statements regarding targets, estimates and assumptions in respect of metal production and prices, operating costs and results, capital expenditures, ore reserves and mineral resources and anticipated grades and recovery rates, and are or may be based on assumptions and estimates related to future technical, economic, market, political, social and other conditions. Argosy disclaims any intent or obligation to update publicly any forward-looking statements, whether as a result of new information, future events or results or otherwise. The words "believe", "expect", "anticipate", "indicate", "contemplate", "target", "plan", "intends", "continue", "budget", "estimate", "may", "will", "schedule" and other similar expressions identify forward-looking statements. All forward-looking statements made in this presentation are qualified by the foregoing cautionary statements. Investors are cautioned that forward-looking statements are not guarantees of future performance and accordingly investors are cautioned not to put undue reliance on forward-looking statements due to the inherent uncertainty therein.

The information in this report that relates to technical matters is based on information compiled by Jerko Zuvela who is the Managing Director of AGY. Mr Zuvela is a Member of the Australasian Institute of Mining and Metallurgy.

Certain information in this presentation has been derived from third parties and though AGY has no reason to believe that it is not accurate, reliable or complete, it has not been independently audited or verified by AGY.

To the extent permitted by law, AGY and its officers, employees, related bodies corporate and agents disclaim all liability, direct, indirect or consequential (and whether or not arising out of the negligence, default or lack of care of AGY and/or any of its agents) for any loss or damage suffered by a recipient or other persons arising out of, or in connection with, any use or reliance on this presentation or information.

All amounts in A\$ unless stated otherwise.



# Company Overview

## *Lithium brine project in the 'Lithium Triangle' with development works commenced*

- Key Rincon Lithium Project located in the world-class "Lithium Triangle" – the world's dominant source of lithium production:
  - *located in Salar del Rincon, Salta Province, Argentina*
  - *flagship asset in Argosy's lithium fast-track development strategy, with a clear conceptual pathway targeting battery grade lithium carbonate (LCE) production*
  - *Stage 1 & 2 development works now in progress concurrently*
  - *Stage 1 plant capacity up to 500tpa LCE product – first product targeted for end March 2018 Quarter*
  - *Pre-eminent lithium processing expert Pablo Alurralde managing Rincon Project*
- \$17m capital raising completed in October 2017
  - *Funds to be utilised for continued Stage 2 development works*
  - *Company now fully funded to first production of targeted battery grade LCE product*
- In-principle agreement for Argosy to acquire immediate 77.5% interest in Puna Mining S.A. – the JV entity that owns the Rincon Lithium Project
- Continued engagement with customers in tightening lithium market to secure Off-take Agreements
- Argentina – open for business
- Strong upcoming news flow on continued Rincon development



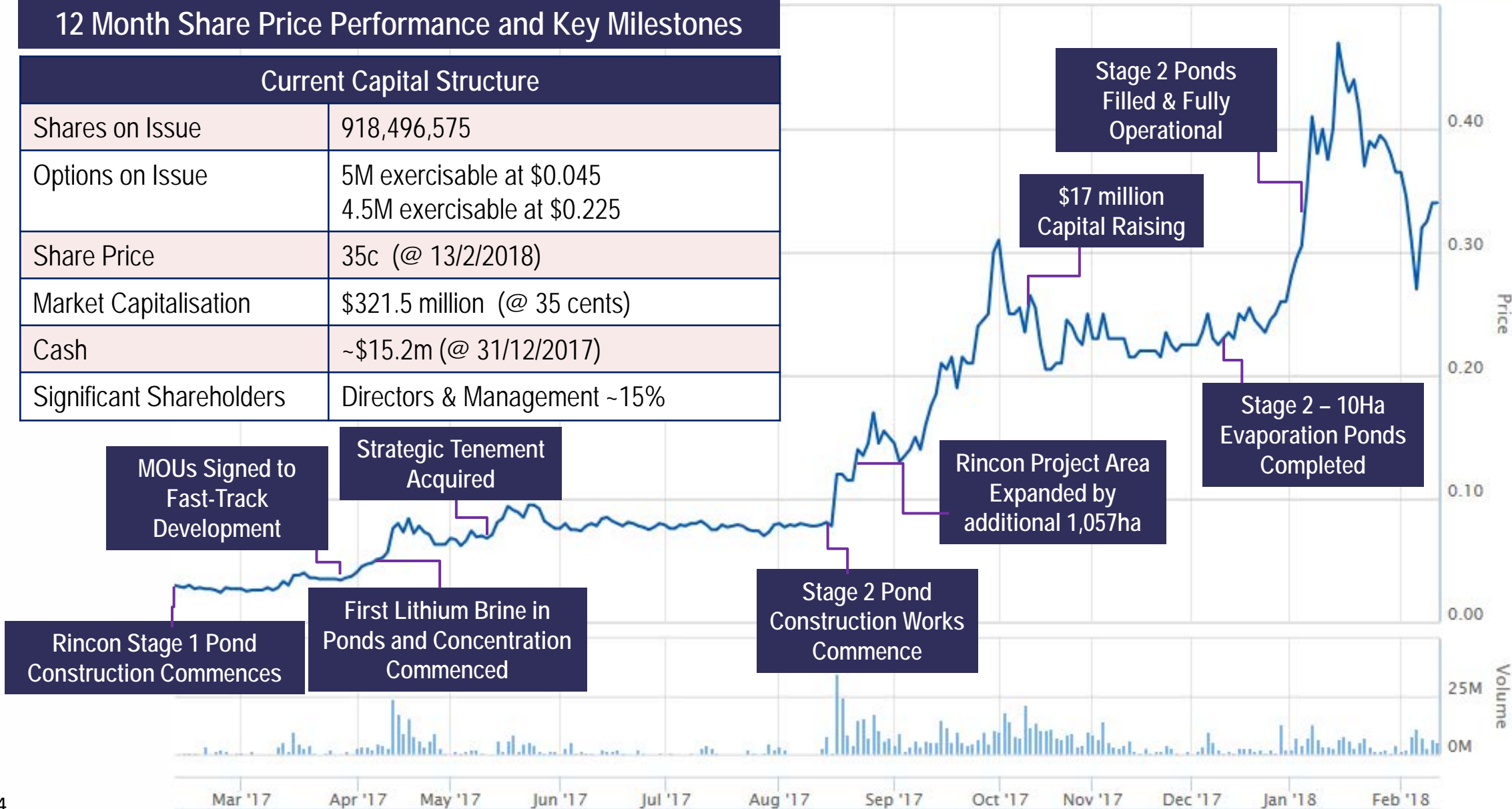
# Capital Structure, Share Price & Milestones



## 12 Month Share Price Performance and Key Milestones

### Current Capital Structure

Shares on Issue	918,496,575
Options on Issue	5M exercisable at \$0.045 4.5M exercisable at \$0.225
Share Price	35c (@ 13/2/2018)
Market Capitalisation	\$321.5 million (@ 35 cents)
Cash	~\$15.2m (@ 31/12/2017)
Significant Shareholders	Directors & Management ~15%



# Directors & Management



## Alex Molyneux – Non-Executive Chairman

Mr. Molyneux is an experienced resources industry executive. Mr. Molyneux currently serves as CEO of uranium producer, Paladin Energy Limited. He is a Co-Founder of Azarga Resources Group and Non-Executive Chairman of Azarga Metals Corp. Mr. Molyneux was previously President, CEO and Director of SouthGobi Resources, an Ivanhoe Mines Group company, and a Non-Executive Director of Goldrock Mines Corp. Prior to joining SouthGobi, Mr. Molyneux had a 10-year career as a natural resources investment banker, including as Managing Director, Head of Metals and Mining Investment Banking, Asia for Citigroup.



## Jerko Zuvela – Managing Director

Mr Zuvela is a Chartered Professional Geologist having spent over 20 years in the mining and resources industry. Mr. Zuvela has held executive management roles for private and public resources companies, with operational and corporate experience in various commodities covering exploration, project development, business development, finance, commercial and corporate activities involved with projects in Australia, South America, Asia and Africa. Mr. Zuvela has considerable experience in building junior resources companies and understands the requirements working within this sector, including fundamental parameters, strategic drivers and market requirements.



## Ranko Matic – Non-Executive Director

Mr Matic is a Chartered Accountant with over 25 year experience in the areas of financial and executive management, accounting, audit, business and corporate advisory. Mr Matic is a director of a chartered accounting firm and a corporate advisory company based in Perth, and has specialist expertise and exposure in areas of audit, corporate services, due diligence, mergers and acquisitions, and valuations.



## Mal Randall – Non-Executive Director

Mr Randall (Dip Applied Chem, FAICD) holds a Bachelor of Applied Chemistry degree and has more than 45 years' of extensive experience in corporate, management and marketing in the resources sector, including more than 25 years with the Rio Tinto group of companies.



## Pablo Alurralde – President Rincon JV Project *(Mr Alurralde's experience described in detail in following pages)*

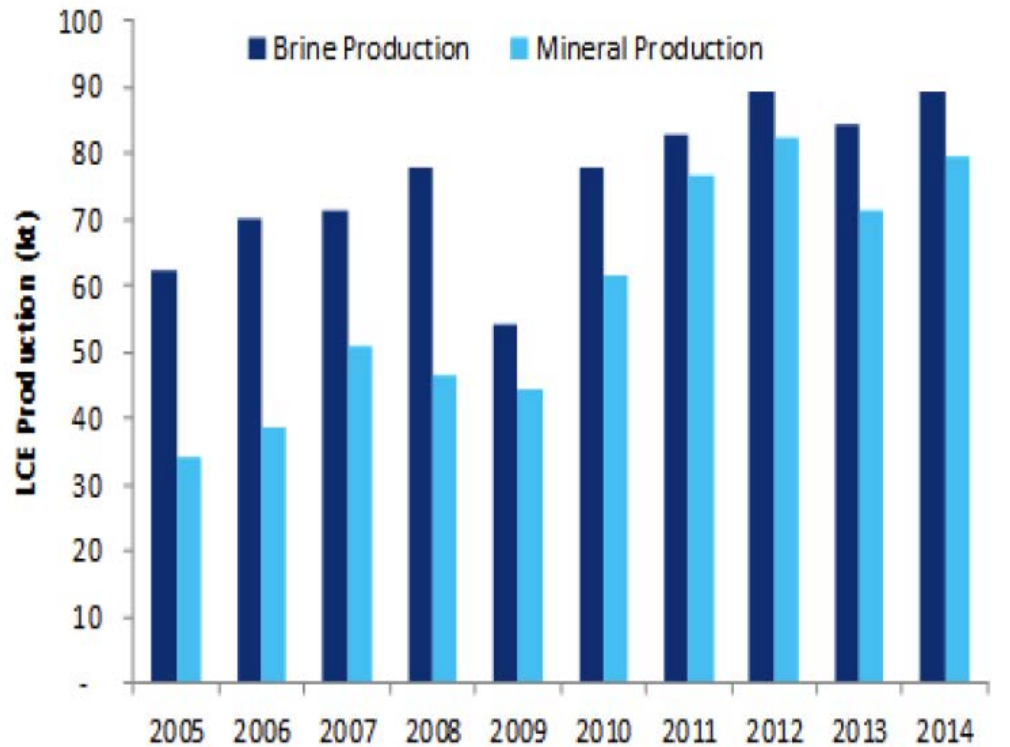
# Lithium 101: Brine vs. Hard-Rock Production

*Most lithium production comes from lower cost brine production*



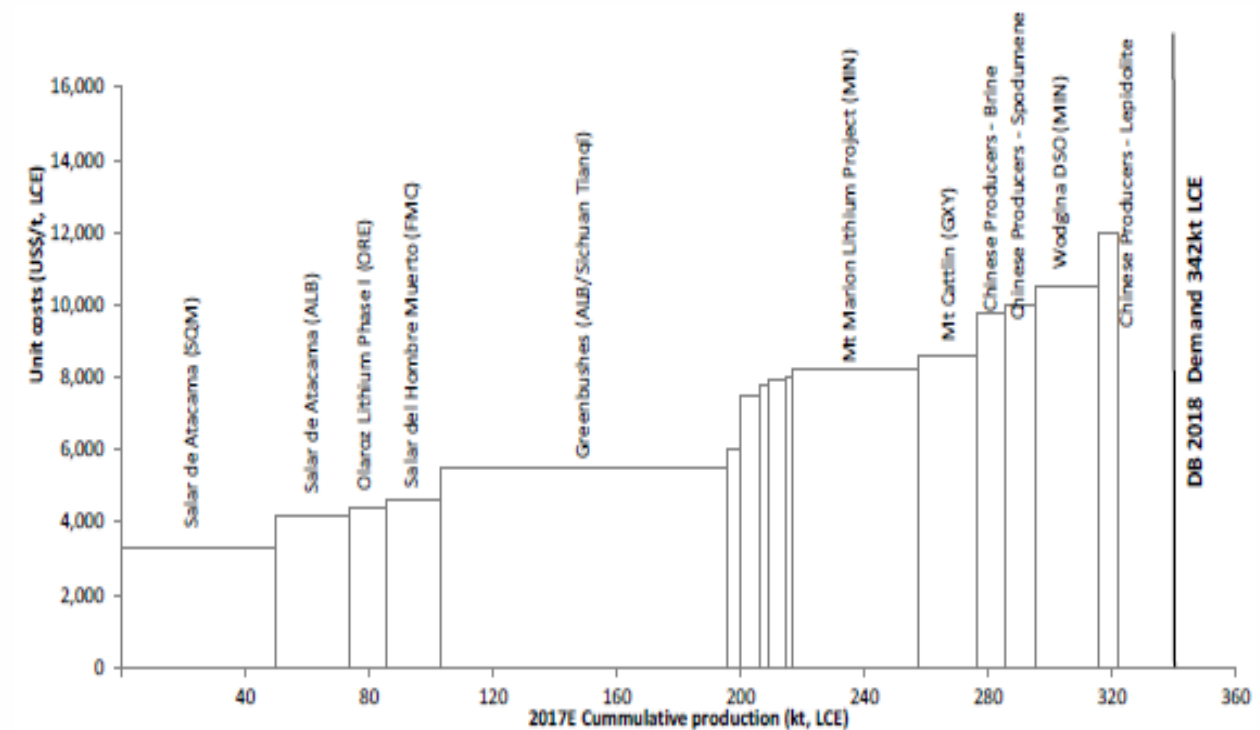
- Lithium production is predominantly delivered from brines
- Brines have significantly lower extraction costs compared to hard rock deposits

### Lithium Production by Deposit Style



Source: Citi Research

### Lithium Cost Curve (by Capacity)



Source: Deutsche Bank, company data

Argosy is focused on developing brine projects with the potential to have low capital and operating costs

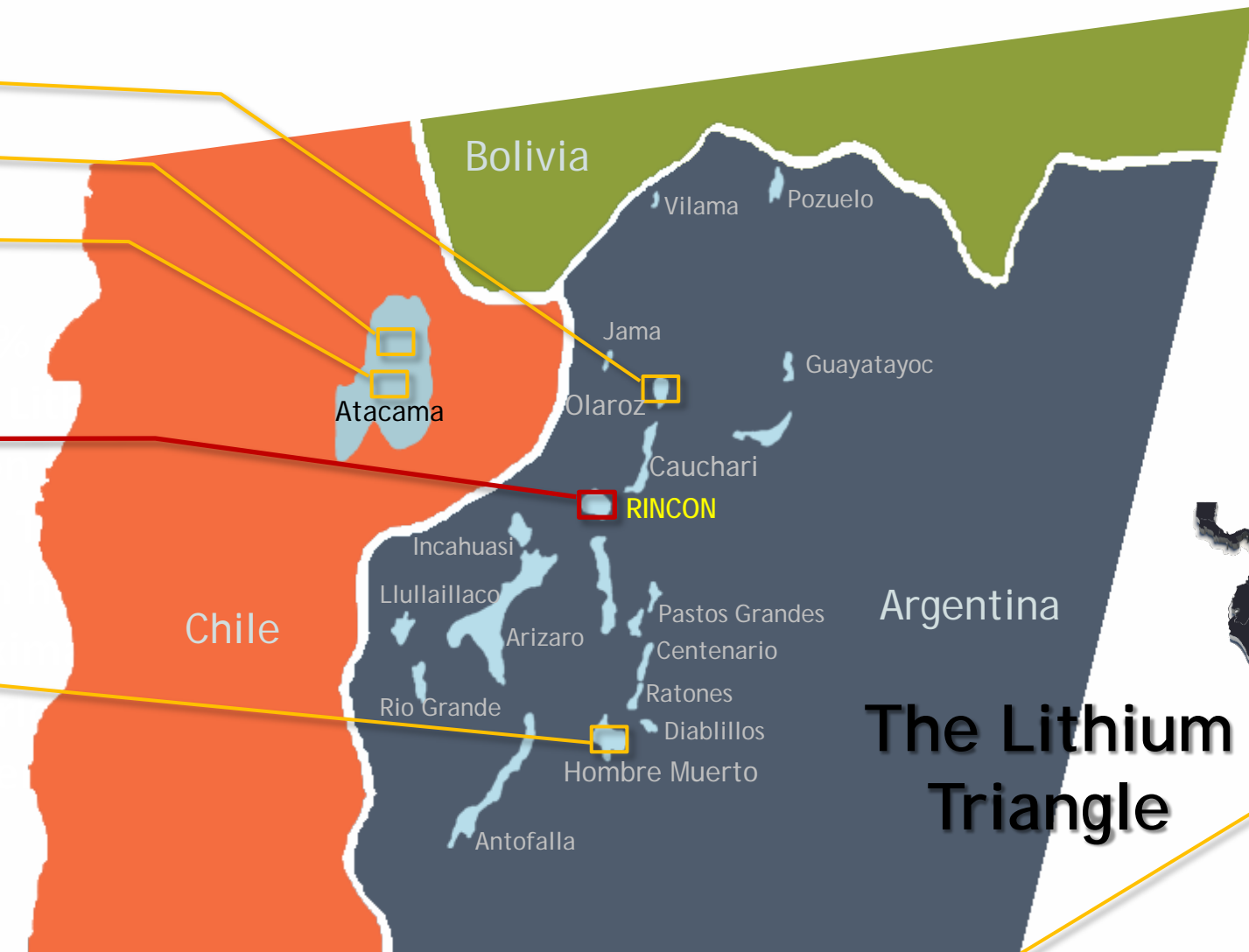


# Argosy in the "Lithium Triangle"

World's most prolific lithium producing region



ARGOSY MINERALS LIMITED



49% of Global Lithium Production from the "Lithium Triangle" which holds approximately 70% of World's Lithium Reserves



AGY Rincon JV Lithium Project

Salars (salt flats)

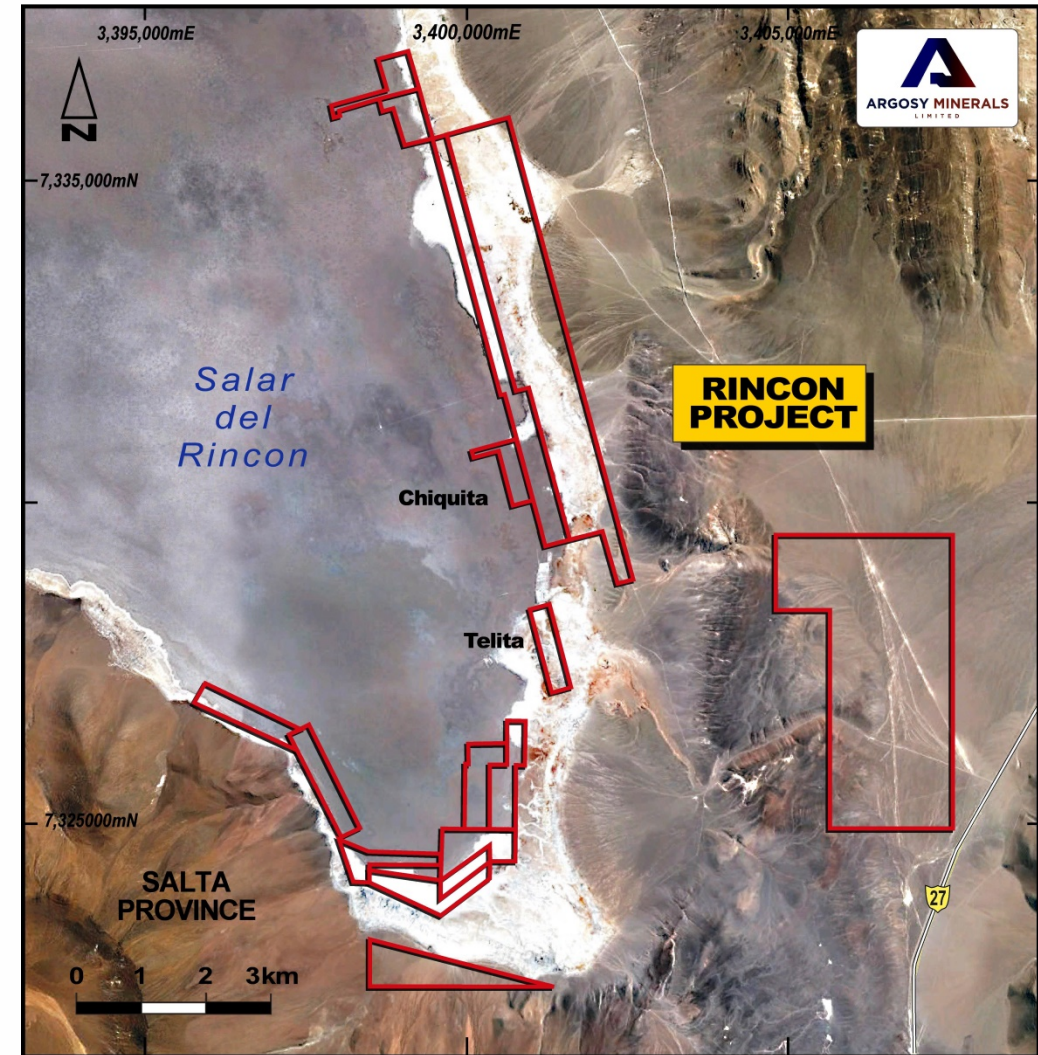


# Rincon Project: Recent History and Overview

*A significant opportunity to achieve near-term LCE production*



- Binding JV Agreement executed September 2016
  - *Argosy to earn up to a 90% interest in the Project*
  - *In-principle agreement for Argosy to acquire immediate 77.5% interest in Puna Mining S.A. – the JV entity that owns the Rincon Lithium Project*
  - *Partnership with Argentinian lithium processing expert Pablo Alurralde*
- Project currently comprises up to 2,572 ha of mining concessions and easement rights landholdings
  - *Concessions 100% owned by Puna Mining or Argosy has legal, secure, binding and exclusive option rights to complete 100% acquisition of the properties*
- Extensive historical works conducted within Salar del Rincon
  - *Average lithium brine content of 300-400ppm (Ferretti, 1989)*
  - *Historical drilling & associated works indicate average lithium content of 397ppm (Ovejero Toledo, 2007)*
- Current exploration drilling works confirm historical data
- Independent hydrogeological consultants verifying data for feasibility works



Rincon Project Location Map



# Rincon Project: Location and Infrastructure

*A significant opportunity to achieve near-term lithium production*



- The Project lies within Salta Province, ~3,700m ASL, serviced by city of Salta with population of 600,000
- The region is known for its evaporation rates, given UV is very high, with ~90% of all the days of the year being cloud free and minimal rainfall.
- High quality regional and site infrastructure will facilitate project development, with road, rail, port facilities and power generation services such as electrical and natural gas all available at close distance.

Stage 2 Evaporation Ponds filled



Exploration diamond drilling operations

# Rincon Project: Development Milestones

*A significant opportunity for near-term battery grade lithium carbonate production*



## Stage 1

Lab-scale pilot plant to produce up to 100-150t of commercial grade clean LCE

**Updated increased plant capacity targeting up to 500tpa LCE**

## Stage 2

Complete development works to expand plant capacity up to ~1,000 - 1,500 tpa LCE

**Works progressing**

## Stage 3 - AGY to earn 90% interest

Expanded commercial LCE production target

Stage 1 Works Schedule (by Quarter end)	Dec-16	Mar-17	Jun-17	Sep-17	Dec-17	Mar-18
Environmental studies and regulatory approvals/permits	█					
Pond construction and associated works, including contractor tendering	█	█				
Pond lining and associated works		█	█			
Brine extraction, pumping, storage and transportation works		█	█	█		
Pilot plant construction and test-works, including brine processing, analysis and laboratory treatment of the lithium concentrate		█	█	█	█	
Produce first LCE product						█



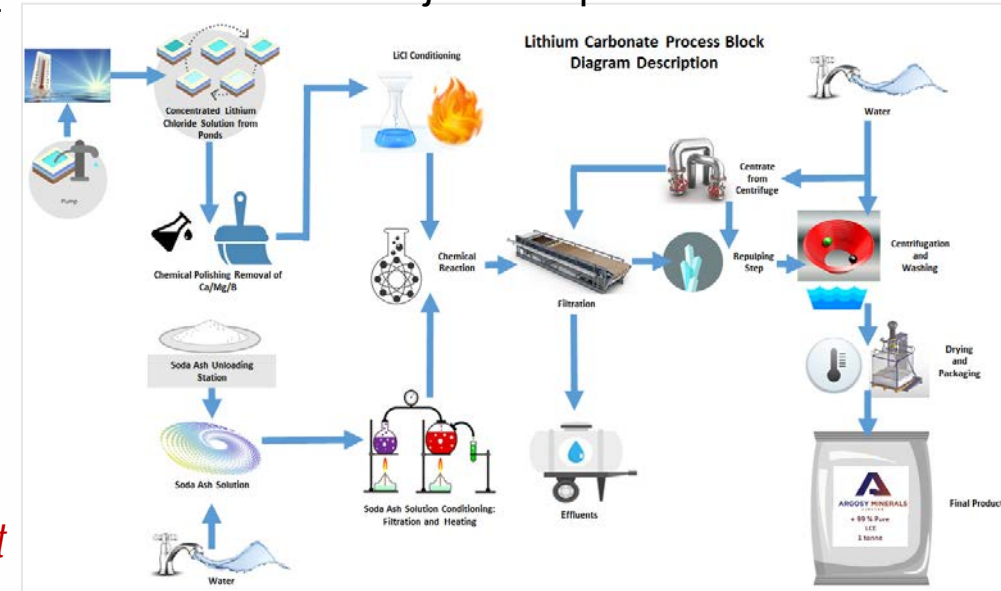
# Rincon Project: Stage 2 Development Works Commenced

*Development works ahead of schedule*



- Stage 1 works progressing – targeting to produce first battery grade LCE product during March 2018 Quarter
  - Targeting up to 500tpa LCE product via lab pilot plant
  - Lab pilot plant ready for first lithium concentrate testing in March 2018
- Stage 2 works progressing
  - Initial 10Ha evaporation ponds completed
  - Production wells completed and brine pumping on-going
  - Exploration drilling progressing, targeting delineation of JORC-compliant Resource in Q1, 2018
  - Stage 2 larger scale pilot plant designed, development to commence in Q2, 2018

Rincon Project Reaction Conceptual Process Flow Sheet



Rincon Project – Stage 1 Evaporation Ponds



Rincon Project – Stage 2 Evaporation Ponds





# Rincon Project: Key Partner & Expertise

## Pablo Alurralde & Lithium Processing Patents



- Partnership with Argentinian lithium expert Pablo Alurralde
  - *Chemical Engineer and Master of Philosophy, former director of FMC Argentina operations*
  - *15 years' experience producing lithium carbonate and 30 years' experience designing chemical processes*
  - *With chemical solution to extract lithium from brines at Rincon*
  - *Successfully produced lab-scale LCE product from Salar del Rincon historically*
  - *Patent presented at US Patents Offices as first inventor for "Production of Lithium Carbonate from concentrated brines on sodium chloride" granted to FMC*
  - *Technical reports on benefit of Rincon and other salars*
  - *Experience in the optimisation of industrial plants, international commerce and logistics*
  - *In-depth knowledge of international lithium market*



(12) United States Patent Alurralde et al.	(10) Patent No.: US 8,309,043 B2
(45) Date of Patent:	Nov. 13, 2012
(54) <b>RECOVERY OF LI VALUES FROM SODIUM SATURATE BRINE</b>	4,347,327 A 8 1982 Lee et al.
(75) Inventors: <b>Pablo Alurralde</b> , Salta (AR); <b>Vijay Mehra</b> , Gastonia, NC (US)	4,348,295 A 9 1982 Barba
(73) Assignee: <b>FMC Corporation</b> , Philadelphia, PA (US)	4,348,296 A 9 1982 Bauman et al.
(*) Notice: Subject to any disclaimer, the term of this patent is extended or adjusted under 35 U.S.C. 154(b) by 0 days.	3,348,497 A 9 1987 Hanson et al.
(21) Appl. No.: 13/288,389	4,376,106 A 3 1983 Lee et al.
(22) Filed: Nov. 3, 2011	4,783,109 A 4 1983 Lee et al.
(65) Prior Publication Data US 2012/0141342 A1 Jun. 7, 2012	4,430,311 A 2 1984 Lee et al.
Related U.S. Application Data	4,461,714 A 7 1984 Barba
(60) Provisional application No. 61/420,042, filed on Dec. 6, 2010.	4,472,362 A 9 1984 Barba
(51) Int. Cl. C01D 15/09 (2006.01)	4,473,962 A 9 1984 Meimenga
(52) U.S. Cl. 423/179.5; 252/184; 23/295 S; 23/306	4,477,307 A 10 1984 Barba
(58) Field of Classification Search 423/181; 23/295 S; 306; 252/184 See application file for complete search history.	5,380,249 A * 2 1995 Bauman et al. 423 179.5
(56) References Cited	5,909,516 A 2 1997 Bauman et al.
U.S. PATENT DOCUMENTS	6,017,500 A * 1 2000 Mehra 423 179.5
3,099,538 A 7 1963 Hadzerna	6,555,678 B1 * 4 2003 Mehra 423 179.5
3,496,200 A 2 1967 Neppert et al.	2011 0306941 A1 * 12 2011 Geil et al. 423 179.5
4,116,856 A 9 1978 Lee et al.	
4,116,858 A 9 1978 Lee et al.	
4,159,811 A 6 1979 Lee et al.	
4,221,767 A 9 1980 Lee et al.	
4,291,001 A 9 1981 Repsher et al.	

Patent for "Recovery of Li values from sodium saturate brine"  
US 8309043 B2

**SALARES ARGENTINOS:  
FUENTES DE RIQUEZA**

PARTE I. ESQUEMA PRELIMINAR DE BENEFICIO

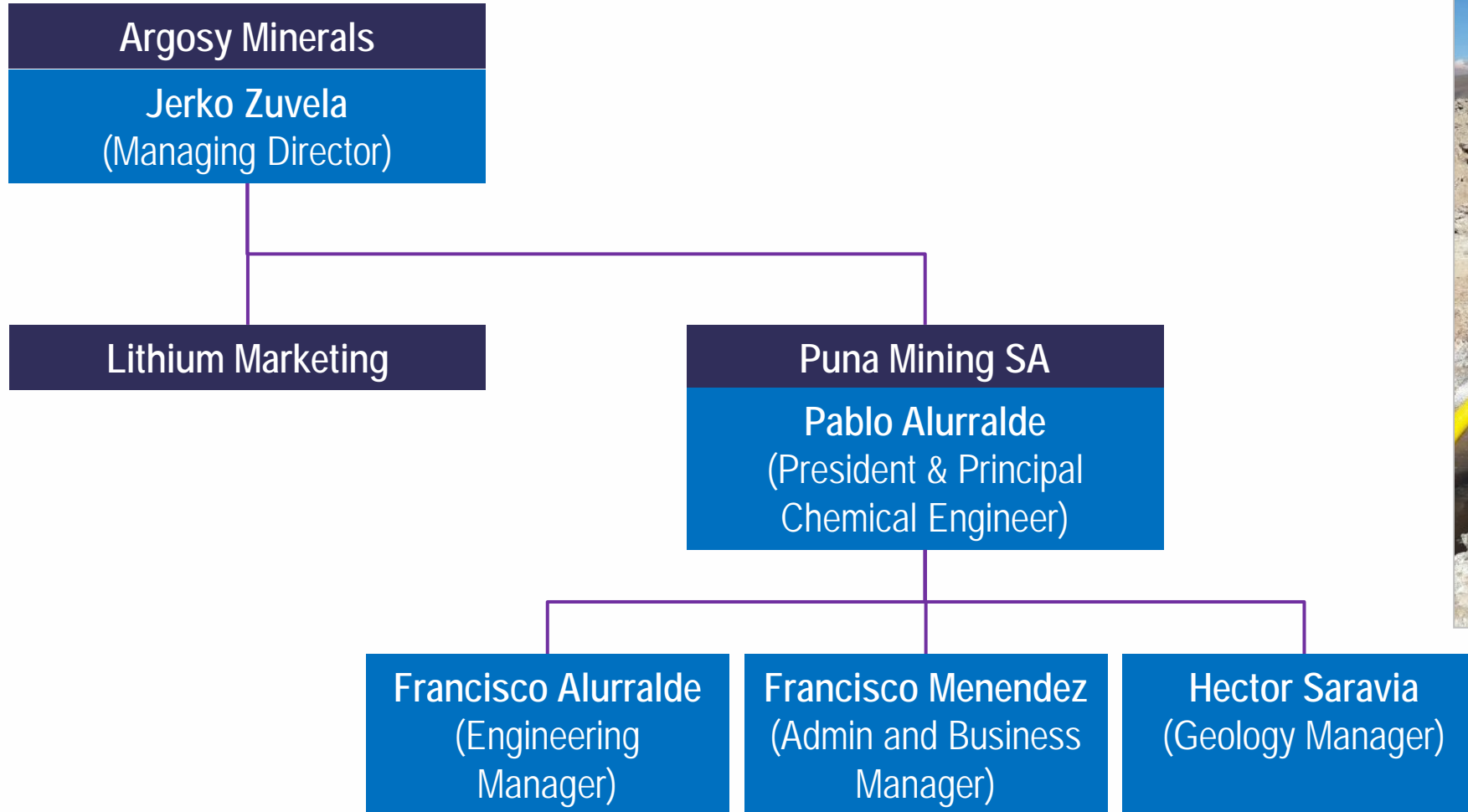
NEDO NANNI y PABLO H. ALURRALDE  
Instituto de Beneficio de Minerales, Universidad Nacional de Salta (Argentina).



# Rincon Project: Executive Management

## Management team

- ✓ Argosy has executed a Definitive Farm-In Joint Venture Agreement for the Rincon Lithium Project and will earn up to a 90% interest in the Argentinian joint venture company – Puna Mining S.A.



# Investment Summary

- ✓ Key focus is on Rincon Lithium Project located in the world-class "Lithium Triangle" – the world's dominant source of lithium production
- ✓ Company now fully funded to first production of targeted battery grade LCE product
- ✓ Fast-track development at Rincon Project progressing – targeting first battery grade LCE product scheduled for March 2018 Quarter
- ✓ In-principle agreement for Argosy to acquire immediate 77.5% interest in Puna Mining S.A. – the JV entity that owns the Rincon Lithium Project
- ✓ Pre-eminent lithium processing expert Pablo Alurralde managing Rincon Project
- ✓ Argentina – open for business

Rincon Project – Stage 2 Evaporation Ponds



On the fast track to lithium production in Argentina

Rincon Project – Stage 2 Evaporation Ponds







**ARGOSY MINERALS**  
LIMITED

## Contact Us

To discuss how Argosy could benefit you, please contact:

Jerko Zuvela - Managing Director

T +61 8 6188 8181

Level 3, 216 St Georges Terrace PERTH WA 6000 Australia

Email: [jerko@argosyminerals.com.au](mailto:jerko@argosyminerals.com.au)

ASX Code: AGY



[www.argosyminerals.com.au](http://www.argosyminerals.com.au)