

ASX RELEASE

12 MARCH 2018

CODE: ALY

BOARD OF DIRECTORS

Mr Lindsay Dudfield
Non-Executive Chairman

Mr Leigh Ryan
Managing Director

Ms Liza Carpene
Non-Executive Director

Mr Anthony Ho
Non-Executive Director

ISSUED CAPITAL

SHARES 342,335,585

OPTIONS 19,500,000 (Unlisted)

PROJECTS

BRYAH BASIN (80-100%)

KARONIE (100%)

LACHLAN (earning up to 80%)

Suite 8/8 Clive Street
WEST PERTH WA 6005

Phone: +61 8 9481 4400
Facsimile: +61 8 9481 4404

www.alchemyresources.com.au



A focus on exploration

Alchemy commences RC drilling at Rosedale and Black Range Tank Prospects, Cobar Basin Project, NSW

HIGHLIGHTS

- **Reverse Circulation (RC) drilling underway at the Rosedale Prospect** within Alchemy's Yellow Mountain Project as follow-up to historic drill intercepts of **24m @ 2.51g/t Au from 4m and 6m @ 3.1g/t Au from 5m**¹.
- **RC drilling at Black Range Tank Prospect** within Alchemy's Overflow Project aims to identify Hera style gold and base metal mineralisation associated with a **poorly tested MLEM / VTEM conductivity high, coincident gold/base metal soil anomaly, and rock chip values to 1.94g/t Au, 45g/t Ag, 1.2% Pb, & 0.1% Cu**².
- ~150m of RC drilling in 3 holes planned at Rosedale, and ~350m in 2 RC holes plus downhole EM to follow at Black Range Tank.
- **Assay results expected by early April.**

Alchemy Resources Limited (ASX: ALY) ("Alchemy") is pleased to announce the commencement of Reverse Circulation (RC) drilling within the Yellow Mountain and Overflow gold and base metal projects in the Cobar Basin, NSW (*Figure 1*).

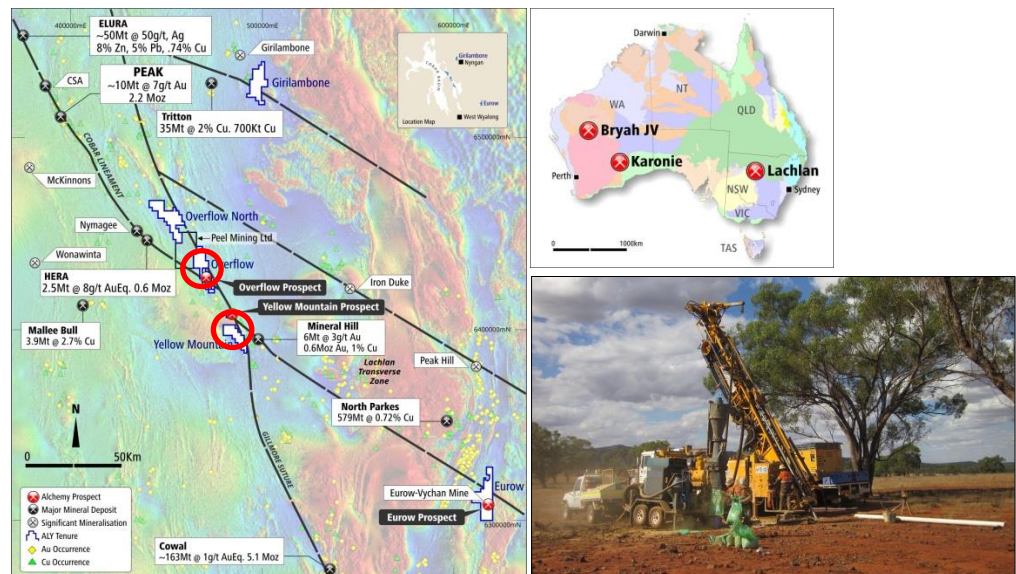


Figure 1: Lachlan Project tenements, major deposits, Cu & Au occurrences, and interpreted major structures over aeromagnetic image.

¹ Refer to Alchemy Resources ASX Announcement dated 15 February 2017

² Refer to Alchemy Resources ASX Announcement dated 21 August 2017

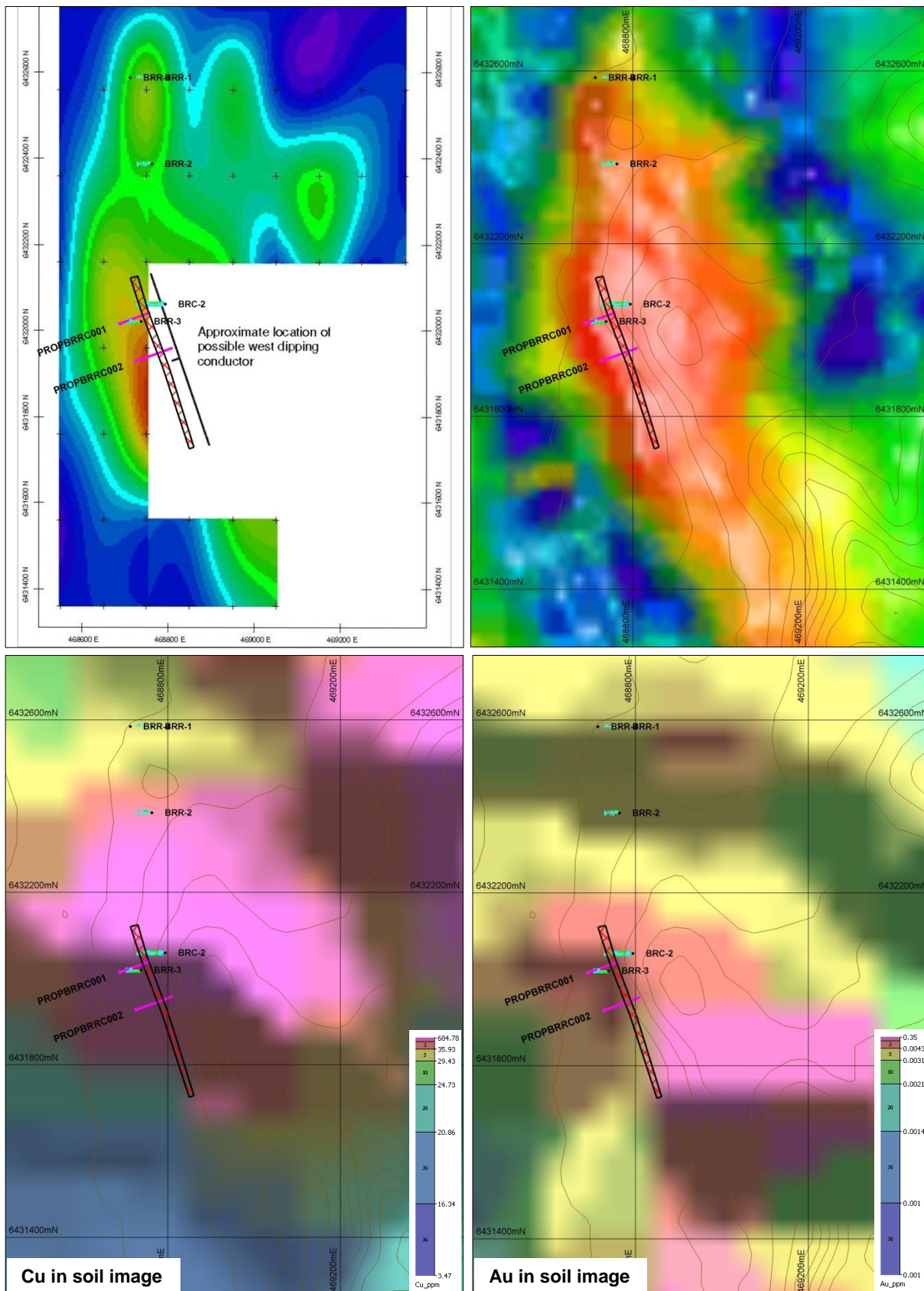


Figure 3: Plan of Black Range Tank Prospect previous drilling with downhole Cu and Pb values (ppm), planned Alchemy RC drill holes (magenta drill traces), interpreted gossan location (black and red outline), and 10m topographic contours over Moving Loop surface EM conductivity image (top left), VTEM conductivity image (top right), copper in soil image (bottom left) and gold in soil image (bottom right) (Refer to Alchemy Resources ASX Announcement dated 21 August 2017).

Budd Exploration Drilling Pty Ltd has been awarded the drilling contract, with the program expected to be completed within 5 days and assay results expected by early April.

Alchemy's Managing Director, Leigh Ryan said:

"The Rosedale and Black Range Tank prospects are two exceptional gold and gold-base metal targets respectively. Although this is a small program it could be the start of something much bigger. Native Title Land Access negotiations on the Overflow Crown Land are progressing well, and with RAB drilling resuming after some wet weather interruptions on the strike extensive Claypan Shear Zone in Western Australia, it's an exciting time for Alchemy."

Please direct enquiries to:

Mr Leigh Ryan – Managing Director

Telephone: +61 8 9481 4400 Email: Leigh@alchemyresources.com.au

The information in this report that relates to Exploration Results is based on information compiled by Mr Leigh Ryan, who is the Managing Director of Alchemy Resources Limited. Mr Ryan is a Member of the Australian Institute of Geoscientists and has sufficient experience of relevance to the styles of mineralisation and the types of deposits under consideration, and to the activities undertaken, to qualify as a Competent Person as defined in the 2012 Edition of the Joint Ore Reserves Committee 'Australasian Code for Reporting of Exploration Results, Mineral Resources and Ore Reserves' ('JORC Code 2012'). Mr Ryan consents to the inclusion in this report of the matters based on his information in the form and context in which it appears.